

LABOUR MARKET AND RELATED PAYMENTS

a monthly profile

Note: The Australian Bureau of Statistics (ABS) produces the official unemployment statistics. The figures contained in this publication are different from the ABS unemployment figures as the ABS and the Department of Education, Employment and Workplace Relations (DEEWR) use different definitions to identify the unemployed and different methods of counting (see the Appendix for more information).

This publication can be found at <http://www.workplace.gov.au/lmrp>

December 2007

Embargoed
Until 11.30 am, 30 January 2008

Annual Subscription - \$65.00

CONTENTS

	<i>Page</i>
Introduction	1
Statistical Highlights	2
Tables	
1. Labour Market Payments - Time Series	3
2. Newstart Allowees - Derivation of the job seeker population	4
3. Youth Allowees (other) - Derivation of the job seeker population	5
4. Job seekers receiving Newstart Allowance and Youth Allowance (other) - Time Series	6
5. Job seekers receiving Newstart Allowance and Youth Allowance (other) by State	7
6. Job seekers receiving Newstart Allowance and Youth Allowance (other) by Age and Sex	8
7. Job seekers receiving Newstart Allowance and Youth Allowance (other) by Area Support Office and Customer Service Centre	9
8. Job seekers receiving Newstart Allowance and Youth Allowance (other) by Fortnightly Earnings and Sex	23
Explanatory Notes	24
Glossary	30
Appendix	33
For More Information	36

INTRODUCTION

This publication presents statistical information on a monthly basis for the various types of labour market payments delivered by Centrelink on behalf of the Department of Education, Employment and Workplace Relations (DEEWR). This publication was produced previously by the Department of Employment and Workplace Relations (DEWR).

This publication covers NSA and YA(o) in some detail, and to a lesser extent, MAA, PA, WA, YA(FTS) and YA (Australian Apprentices).

Table 1 provides information on the total number of NSA and YA recipients. The YA population is broken down into YA(o), YA(FTS) and YA(Australian Apprentices) categories. The total numbers of MAA, PA and WA recipients are also provided in this table.

Tables 2 and 3 show the derivation of the NSA and YA(o) job seeker populations (see the reference to job seekers in the 'Comparability of data' section of the Explanatory Notes). These populations are added together to derive the total number of job seekers.

Tables 4 to 8 provide information on the total job seeker population.

When using time series figures, it is important to note that changes have occurred over time to the conditions of eligibility for different payments. Details of these changes are provided in the Explanatory Notes.

All media inquiries should be directed to the Centrelink National Media Officer on (02) 6284 6442. For more general inquiries regarding further statistical information please refer to the last page of this publication for other contact details.

The next issue of this publication is scheduled for release on 27 February 2008.

STATISTICAL HIGHLIGHTS – December 2007

Between December 2006 and December 2007:

Total Newstart Allowance (NSA) recipients and Youth Allowance (other) (YA(o)) recipients **decreased by 8.7%** overall from 545,713 to 498,282 and

- ◆ decreased 8.6% for NSA from 469,233 to 428,962 and
- ◆ decreased 9.4% for YA(o) from 76,480 to 69,320.

The number of job seekers **decreased by 14.8%** overall from 354,386 to 302,027 and

- ◆ decreased 16.1% for NSA recipients from 294,218 to 246,773 and
- ◆ decreased 8.2% for YA(o) recipients from 60,168 to 55,254.

Long-term job seekers decreased by 15.7% from 201,044 to 169,573.

Short-term job seekers decreased by 13.6% from 153,342 to 132,454.

For comparisons between DEEWR unemployment labour market payment numbers and ABS labour force unemployment statistics, see Appendix.

**Newstart Allowance and Youth Allowance (other)
December 2005 to December 2007**

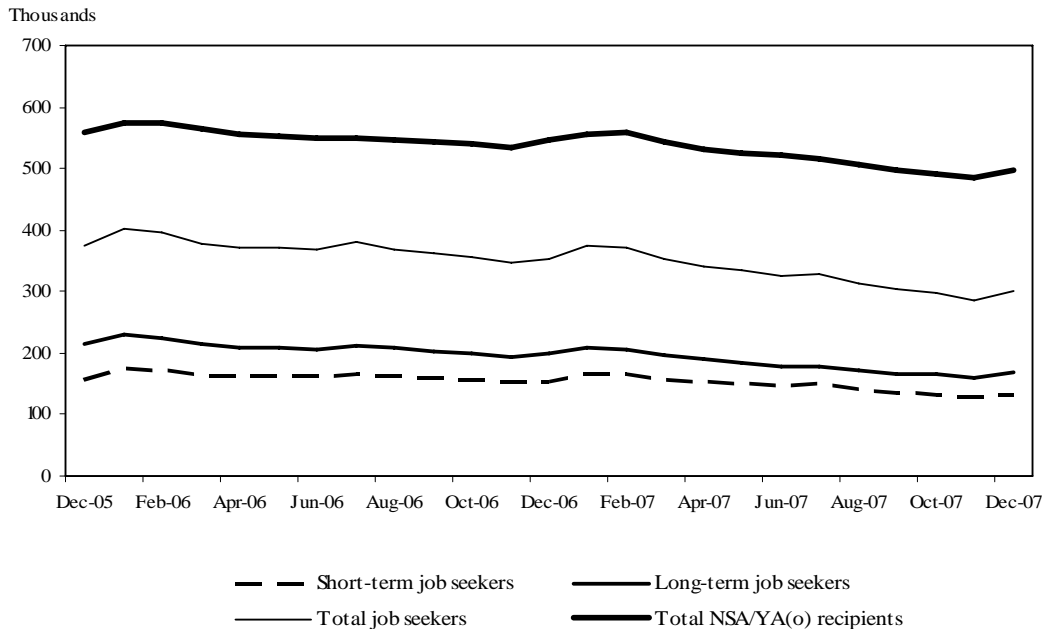


TABLE 1 - LABOUR MARKET PAYMENTS - TIME SERIES (a)

	Newstart Allowance		Youth Allowance			Mature Age Allowance	Partner Allowance	Widow Allowance
	Long-term (b)	Total	Other	Full-time Students (c)	Australian Apprentices (d)			
February 1994 (e)	472,785	977,796
December 2005	290,391	476,028	84,022	233,273	2,486	16,623	67,762	45,830
January 2006	294,100	487,251	85,628	223,059	2,478	15,869	66,905	45,849
February 2006	294,250	491,955	83,559	232,189	2,731	15,111	65,681	45,760
March 2006	291,020	484,784	78,913	250,079	2,994	14,271	64,282	45,622
April 2006	288,017	479,378	76,747	260,349	3,190	13,547	62,924	45,438
May 2006	285,853	475,830	75,533	266,392	3,181	12,836	61,863	45,212
June 2006	284,288	474,125	75,366	270,081	3,323	12,110	60,829	45,096
July 2006	285,152	474,477	76,173	264,863	3,376	11,379	59,401	44,639
August 2006	284,943	472,448	72,634	271,591	3,472	10,731	58,213	44,184
September 2006	285,218	472,222	71,104	276,235	3,643	10,049	56,965	43,705
October 2006	284,276	470,340	69,511	277,061	3,740	9,430	55,683	43,349
November 2006	282,694	466,631	68,721	267,042	3,683	8,892	54,611	43,112
December 2006	284,499	469,233	76,480	226,902	3,571	8,293	53,398	42,903
January 2007	286,614	478,033	77,358	216,869	3,487	7,745	52,205	42,530
February 2007	286,113	481,343	76,036	223,780	3,715	7,287	51,251	42,370
March 2007	281,937	473,278	71,619	239,502	4,087	6,751	50,058	42,032
April 2007	277,688	463,732	68,746	250,660	4,250	6,235	48,912	41,619
May 2007	274,568	458,297	67,973	256,805	4,341	5,790	47,896	41,245
June 2007	271,439	452,733	67,852	261,197	4,435	5,284	46,709	40,886
July 2007	269,816	448,833	67,617	256,808	4,416	4,796	45,917	40,735
August 2007	267,972	442,112	63,717	263,166	4,490	4,381	45,459	40,853
September 2007	266,180	435,711	62,042	265,669	4,509	3,981	45,058	41,019
October 2007	264,434	429,811	59,920	264,829	4,350	3,619	44,695	41,156
November 2007	261,930	424,168	59,967	249,546	4,093	3,242	44,358	41,278
December 2007	264,127	428,962	69,320	215,158	3,956	2,868	43,997	41,400
<i>Variation November 2007 - December 2007</i>								
Number	2,197	4,794	9,353	-34,388	-137	-374	-361	122
Per cent	0.8	1.1	15.6	-13.8	-3.3	-11.5	-0.8	0.3

(a) This table presents data using the revised method of measuring the number of people receiving labour market payments introduced in July 2002. Revised historical data from May 1998 to June 2002 is in Table A (May 1998 - June 2000) and Table 1 (July 2000 - July 2002) of July 2002 publication.

(b) Long-term Newstart allowees are persons who have been receiving income support for 12 months or more.

(c) The number of full time students does not include those who have traded in their entire Youth Allowance entitlement for a loan under the Student Financial Supplement Loan Scheme. The Government announced on 24 April 2003 that no further loans would be issued under this Scheme from 1 January 2004. For further details, refer to the Explanatory Notes at the back of this publication.

(d) Australian Apprenticeships combine employment with structured training to provide a nationally recognised qualification. Australian Apprentices enter formal agreements known as either 'Training Agreements' or 'Contracts of Training' which set out the relationship between the employer and the Australian Apprentice and their respective rights and responsibilities.

(e) February 1994 data has been included for comparison purposes due to the peak in the number of persons receiving JSA/NSA at this point in time.

Notes:

- Most of the figures in this publication are averages and have been rounded. As a result, discrepancies may occur between sums of component items and totals, and in the calculation of variations.

TABLE 2 - NEWSTART ALLOWEES - DERIVATION OF THE JOB SEEKER POPULATION

	November 2007	December			Variation November - December	
		Males	Females	Persons	Number	Per cent
Short-term NSA Customers	162,238	105,005	59,830	164,835	2,597	1.6
CPS recipients (a)	2,670	1,815	716	2,531	-139	-5.2
Did not receive a payment (b)	9,853	5,690	4,150	9,840	-13	-0.1
Received a payment	149,715	97,500	54,964	152,464	2,749	1.8
Incapacitated (c)	16,320	9,928	6,743	16,671	351	2.2
Training	11,560	7,130	3,796	10,926	-634	-5.5
Self-employment development (d)	512	218	161	379	-133	-26.0
Voluntary/part-time work (e)	3,778	1,414	2,469	3,883	105	2.8
Other/temporary exemptions (f)	12,885	7,561	5,486	13,047	162	1.3
Short-term NSA job seekers (g)	104,660	71,249	36,309	107,558	2,898	2.8
Long-term NSA Customers	261,930	156,983	107,144	264,127	2,197	0.8
CPS recipients (a)	6,950	4,437	2,205	6,642	-308	-4.4
Did not receive a payment (b)	10,666	5,773	4,710	10,483	-183	-1.7
Received a payment	244,314	146,773	100,229	247,002	2,688	1.1
Incapacitated (c)	19,354	10,543	8,824	19,367	13	0.1
Training	52,128	31,752	19,442	51,194	-934	-1.8
Self-employment development (d)	240	118	72	190	-50	-20.8
Voluntary/part-time work (e)	12,004	6,687	5,781	12,468	464	3.9
Other/temporary exemptions (f)	24,808	14,766	9,802	24,568	-240	-1.0
Long-term NSA job seekers (g)	135,780	82,907	56,308	139,215	3,435	2.5
All NSA Customers	424,168	261,988	166,974	428,962	4,794	1.1
CPS recipients (a)	9,620	6,252	2,921	9,173	-447	-4.6
Did not receive a payment (b)	20,519	11,463	8,860	20,323	-196	-1.0
Received a payment	394,029	244,273	155,193	399,466	5,437	1.4
Incapacitated (c)	35,674	20,471	15,567	36,038	364	1.0
Training	63,688	38,882	23,238	62,120	-1,568	-2.5
Self-employment development (d)	752	336	233	569	-183	-24.3
Voluntary/part-time work (e)	15,782	8,101	8,250	16,351	569	3.6
Other/temporary exemptions (f)	37,693	22,327	15,288	37,615	-78	-0.2
All NSA job seekers (g)	240,440	154,156	92,617	246,773	6,333	2.6

(a) Persons with NSA eligibility who received CDEP Participant Supplement or add ons while participating in CDEP Projects.

(b) Persons who did not receive a payment due to their income and/or that of their partner. This group is often referred to as zero-paid.

(c) Activity code "incapacitated" relates to NSA recipients who have become temporarily ill or incapacitated.

(d) Those customers exempted from job search while they develop self-employment opportunities.

(e) Those customers undertaking approved full-time voluntary work or combinations of voluntary and part-time work who are not required to seek work.

(f) Includes other customers known not to have job search obligations. See 'Job seekers' in Explanatory Notes.

(g) Those customers who received a payment and generally are required to search for work. These customers form the basis of the population group in Tables 4 - 7.

Notes:

- For information on short-term and long-term categories please refer to the Glossary.

- Most of the figures in this publication are averages and have been rounded. As a result, discrepancies may occur between sums of component items and totals, and in the calculation of variations.

TABLE 3 - YOUTH ALLOWEES (OTHER) - DERIVATION OF THE JOB SEEKER POPULATION

	November 2007	December			Variation November - December	
		Males	Females	Persons	Number	Per cent
Short-term YA (other) Customers	29,301	16,384	15,117	31,501	2,200	7.5
CPS recipients (a)	1,173	715	395	1,110	-63	-5.4
Did not receive a payment (b)	700	359	366	725	25	3.6
Received a payment	27,428	15,310	14,356	29,666	2,238	8.2
Part-time study & work (c)	2	0	3	3	1	50.0
Part-time study & other YA activities (d)	73	24	40	64	-9	-12.3
Incapacitated (e)	1,669	842	964	1,806	137	8.2
Training	1,321	780	495	1,275	-46	-3.5
Self-employment development (e)	8	2	2	4	-4	-50.0
Full-time voluntary work	0	0	0	0	0	0.0
Other non-job seekers (e)	1,590	673	945	1,618	28	1.8
Short-term YA (other) job seekers (f)	22,765	12,989	11,907	24,896	2,131	9.4
Long-term YA (other) Customers	30,666	17,879	19,940	37,819	7,153	23.3
CPS recipients (a)	1,014	576	374	950	-64	-6.3
Did not receive a payment (b)	911	443	555	998	87	9.5
Received a payment	28,741	16,860	19,011	35,871	7,130	24.8
Part-time study & work (c)	6	0	4	4	-2	-33.3
Part-time study & other YA activities (d)	65	20	27	47	-18	-27.7
Incapacitated (e)	1,220	464	768	1,232	12	1.0
Training	2,839	1,512	1,345	2,857	18	0.6
Self-employment development (e)	5	2	2	4	-1	-20.0
Full-time voluntary work	0	0	0	0	0	0.0
Other non-job seekers (e)	1,340	502	867	1,369	29	2.2
Long-term YA (other) job seekers (f)	23,266	14,360	15,998	30,358	7,092	30.5
All YA (other) Customers	59,967	34,263	35,057	69,320	9,353	15.6
CPS recipients (a)	2,187	1,291	769	2,060	-127	-5.8
Did not receive a payment (b)	1,611	802	921	1,723	112	7.0
Received a payment	56,169	32,170	33,367	65,537	9,368	16.7
Part-time study & work (c)	8	0	7	7	-1	-12.5
Part-time study & other YA activities (d)	138	44	67	111	-27	-19.6
Incapacitated (e)	2,889	1,306	1,732	3,038	149	5.2
Training	4,160	2,292	1,840	4,132	-28	-0.7
Self-employment development (e)	13	4	4	8	-5	-38.5
Full-time voluntary work	0	0	0	0	0	0.0
Other non-job seekers (e)	2,930	1,175	1,812	2,987	57	1.9
All YA (other) job seekers (f)	46,031	27,349	27,905	55,254	9,223	20.0

(a) Persons with YA eligibility who received CDEP Participant Supplement or add ons while participating in CDEP projects.

(b) Persons who did not receive a payment due to their own income and/or that of their partner or parents, where applicable. This group is often referred to as zero-paid.

(c) Those customers undertaking approved part-time study and work who are considered to have a full activity load and are not required to seek work.

(d) Those customers undertaking approved part-time study and other activities who are considered to have a full activity load and are not required to seek work.

(e) These categories are defined in the same way as in Table 2, except that those customers combining these activities with part-time study are classified under part-time study and other activities.

(f) Those customers who received a payment and generally are required to search for work. These customers form the basis of the population group in Tables 4 - 7.

Notes:

- For information on short-term and long-term categories please refer to the Glossary.

- Most of the figures in this publication are averages and have been rounded. As a result, discrepancies may occur between sums of component items and totals, and in the calculation of variations.

TABLE 4 - JOB SEEKERS RECEIVING NEWSTART ALLOWANCE AND YOUTH ALLOWANCE (OTHER)
TIME SERIES (a)

	Short-term	Long-term	Total
December 2005	157,829	215,881	373,710
January 2006	173,502	229,230	402,732
February 2006	173,305	224,048	397,353
March 2006	164,016	214,293	378,309
April 2006	161,900	209,435	371,335
May 2006	162,182	207,935	370,117
June 2006	162,331	205,212	367,543
July 2006	165,898	213,281	379,179
August 2006	161,929	207,905	369,834
September 2006	159,462	203,024	362,486
October 2006	156,815	198,967	355,782
November 2006	152,125	193,719	345,844
December 2006	153,342	201,044	354,386
January 2007	165,924	209,395	375,319
February 2007	165,581	205,384	370,965
March 2007	157,827	195,351	353,178
April 2007	153,350	188,871	342,221
May 2007	151,083	183,234	334,317
June 2007	148,602	177,562	326,164
July 2007	149,043	178,467	327,510
August 2007	141,433	171,107	312,540
September 2007	136,186	166,762	302,948
October 2007	132,332	164,716	297,048
November 2007	127,425	159,046	286,471
December 2007	132,454	169,573	302,027
<i>Variation November 2007 - December 2007</i>			
Number	5,029	10,527	15,556
Per cent	3.9	6.6	5.4

(a) This table presents data using the revised method of measuring the number of people receiving labour market payment introduced in July 2002. Revised historical data from May 1998 to June 2002 is in Table B of July 2002 publication.

Notes:

- For information on short-term and long-term categories please refer to the Glossary.

- Most of the figures in this publication are averages and have been rounded. As a result, discrepancies may occur between sums of component items and totals, and in the calculation of variations.

**TABLE 5 - JOB SEEKERS RECEIVING NEWSTART ALLOWANCE AND YOUTH ALLOWANCE (OTHER)
BY STATE**

<i>State</i>	November 2007	December 2007	Variation	
			November - December Number	Per cent
SHORT-TERM JOB SEEKERS				
New South Wales	45,225	46,600	1,375	3.0
Victoria	30,079	31,101	1,022	3.4
Queensland	23,996	25,168	1,172	4.9
South Australia	11,134	11,544	410	3.7
Western Australia	9,724	10,066	342	3.5
Tasmania	3,883	3,996	113	2.9
Northern Territory	2,398	2,918	520	21.7
Australian Capital Territory	986	1,061	75	7.6
AUSTRALIA	127,425	132,454	5,029	3.9
LONG-TERM JOB SEEKERS				
New South Wales	58,840	61,819	2,979	5.1
Victoria	39,020	41,974	2,954	7.6
Queensland	23,303	24,756	1,453	6.2
South Australia	15,019	15,905	886	5.9
Western Australia	9,108	9,657	549	6.0
Tasmania	6,989	7,427	438	6.3
Northern Territory	5,646	6,834	1,188	21.0
Australian Capital Territory	1,121	1,201	80	7.1
AUSTRALIA	159,046	169,573	10,527	6.6
TOTAL JOB SEEKERS				
New South Wales	104,065	108,419	4,354	4.2
Victoria	69,099	73,075	3,976	5.8
Queensland	47,299	49,924	2,625	5.5
South Australia	26,153	27,449	1,296	5.0
Western Australia	18,832	19,723	891	4.7
Tasmania	10,872	11,423	551	5.1
Northern Territory	8,044	9,752	1,708	21.2
Australian Capital Territory	2,107	2,262	155	7.4
AUSTRALIA	286,471	302,027	15,556	5.4

Notes:

- Most of the figures in this publication are averages and have been rounded. As a result, discrepancies may occur between sums of component items and totals, and in the calculation of variations.

**TABLE 6 - JOB SEEKERS RECEIVING NEWSTART ALLOWANCE AND YOUTH ALLOWANCE (OTHER)
BY AGE AND SEX, AS AT DECEMBER 2007**

Age	Short-term job seekers		Long-term job seekers		Total job seekers	
	Number	Per cent	Number	Per cent	Number	Per cent
MALES						
Less than 18 years	4,579	5.4	3,286	3.4	7,865	4.3
18 - 20 years	8,411	10.0	11,074	11.4	19,485	10.7
21 - 24 years	13,710	16.3	11,392	11.7	25,102	13.8
25 - 29 years	13,713	16.3	11,747	12.1	25,460	14.0
30 - 39 years	20,072	23.8	20,000	20.6	40,072	22.1
40 - 49 years	12,817	15.2	16,545	17.0	29,362	16.2
50 - 59 years	7,805	9.3	14,538	14.9	22,343	12.3
60 years and over	3,132	3.7	8,686	8.9	11,818	6.5
Total	84,239	100.0	97,268	100.0	181,507	100.0
FEMALES						
Less than 18 years	4,865	10.1	3,936	5.4	8,801	7.3
18 - 20 years	7,041	14.6	12,061	16.7	19,102	15.8
21 - 24 years	7,758	16.1	8,887	12.3	16,645	13.8
25 - 29 years	5,216	10.8	5,963	8.2	11,179	9.3
30 - 39 years	7,426	15.4	10,196	14.1	17,622	14.6
40 - 49 years	8,086	16.8	14,241	19.7	22,327	18.5
50 - 59 years	6,093	12.6	12,824	17.7	18,917	15.7
60 years and over	1,730	3.6	4,197	5.8	5,927	4.9
Total	48,215	100.0	72,305	100.0	120,520	100.0
PERSONS						
Less than 18 years	9,444	7.1	7,222	4.3	16,666	5.5
18 - 20 years	15,452	11.7	23,135	13.6	38,587	12.8
21 - 24 years	21,468	16.2	20,279	12.0	41,747	13.8
25 - 29 years	18,929	14.3	17,710	10.4	36,639	12.1
30 - 39 years	27,498	20.8	30,196	17.8	57,694	19.1
40 - 49 years	20,903	15.8	30,786	18.2	51,689	17.1
50 - 59 years	13,898	10.5	27,362	16.1	41,260	13.7
60 years and over	4,862	3.7	12,883	7.6	17,745	5.9
Total	132,454	100.0	169,573	100.0	302,027	100.0

**TABLE 7 - JOB SEEKERS RECEIVING NEWSTART ALLOWANCE AND YOUTH ALLOWANCE
(OTHER) BY AREA SUPPORT OFFICE AND CUSTOMER SERVICE CENTRE**

<i>Area Support Office and Customer Service Centre</i>	November 2007	December 2007	Variation	
			November - December Number	Per cent
<i>SYDNEY EAST NEW SOUTH WALES</i>				
Bankstown	3,154	3,145	-9	-0.3
Bondi Junction	928	911	-17	-1.8
Burwood	1,246	1,314	68	5.5
Campsie	2,107	2,164	57	2.7
Caringbah	865	930	65	7.5
Chatswood	674	716	42	6.2
Corrimal	986	1,034	48	4.9
Dapto	949	1,016	67	7.1
Darlinghurst	1,250	1,268	18	1.4
Darlinghurst CCU	25	35	10	%
Haymarket	1	1	0	%
Hornsby	576	625	49	8.5
Hurstville	1,101	1,135	34	3.1
Lakemba	24	21	-3	%
Leichhardt	1,058	1,121	63	6.0
Maroubra	1,004	1,079	75	7.5
Marrickville	1,163	1,238	75	6.4
Northern Beaches	815	869	54	6.6
Participation Sydney East	7	10	3	%
Redfern	1,174	1,216	42	3.6
Revesby	0	1	1	%
Rockdale	1,040	1,101	61	5.9
Ryde	689	711	22	3.2
Shellharbour	1,193	1,265	72	6.0
Sutherland	359	338	-21	-5.8
Wollongong	1,237	1,336	99	8.0
Other (a)	12	11	-1	%
Total	23,637	24,611	974	4.1

Note: For footnotes see end of table.

**TABLE 7 - JOB SEEKERS RECEIVING NEWSTART ALLOWANCE AND YOUTH ALLOWANCE
(OTHER) BY AREA SUPPORT OFFICE AND CUSTOMER SERVICE CENTRE**

<i>Area Support Office and Customer Service Centre</i>	November 2007	December 2007	Variation	
			November - December Number	Per cent
<i>SYDNEY WEST NEW SOUTH WALES</i>				
Auburn	1,764	1,803	39	2.2
Baulkham Hills	498	525	27	5.4
Blacktown	2,335	2,444	109	4.7
Cabramatta	1,548	1,714	166	10.7
Camden	512	530	18	3.5
Campbelltown	1,863	1,920	57	3.1
Fairfield	2,675	2,668	-7	-0.3
Hawkesbury	710	750	40	5.6
Ingleburn	1,136	1,191	55	4.8
Katoomba	558	597	39	7.0
Liverpool	3,037	3,136	99	3.3
Merrylands	1,471	1,525	54	3.7
Mt Druitt	2,211	2,285	74	3.3
Parramatta	1,407	1,487	80	5.7
Penrith	1,373	1,460	87	6.3
Springwood	301	327	26	8.6
St Marys	1,358	1,437	79	5.8
Other (a)	20	25	5	%
Total	24,777	25,824	1,047	4.2

Note: For footnotes see end of table.

**TABLE 7 - JOB SEEKERS RECEIVING NEWSTART ALLOWANCE AND YOUTH ALLOWANCE
(OTHER) BY AREA SUPPORT OFFICE AND CUSTOMER SERVICE CENTRE**

<i>Area Support Office and Customer Service Centre</i>	November 2007	December 2007	Variation	
			November - December Number	Per cent
HUNTER NEW SOUTH WALES				
Armidale	867	940	73	8.4
Cessnock	782	810	28	3.6
Charlestown	1,655	1,719	64	3.9
Ettalong	755	794	39	5.2
Glen Innes	211	231	20	9.5
Gosford	1,248	1,362	114	9.1
Gunnedah	436	448	12	2.8
Inverell	635	673	38	6.0
Kempsey	1,019	1,110	91	8.9
Kurri Kurri	460	455	-5	-1.1
Lakehaven	1,362	1,364	2	0.1
Maitland	1,378	1,470	92	6.7
Mayfield	918	975	57	6.2
Muswellbrook	447	452	5	1.1
Nambucca Heads	947	975	28	3.0
Nelson Bay	485	485	0	0.0
Newcastle	1,177	1,295	118	10.0
Port Macquarie	1,610	1,644	34	2.1
Raymond Terrace	863	891	28	3.2
Singleton	243	253	10	4.1
Tamworth	1,577	1,684	107	6.8
Taree	1,593	1,661	68	4.3
The Entrance	1,176	1,175	-1	-0.1
Toronto	843	895	52	6.2
Tuncurry (Forster)	815	850	35	4.3
Wallsend	1,407	1,447	40	2.8
Wyong	643	631	-12	-1.9
Other (a)	15	18	3	%
Total	25,567	26,707	1,140	4.5

Note: For footnotes see end of table.

**TABLE 7 - JOB SEEKERS RECEIVING NEWSTART ALLOWANCE AND YOUTH ALLOWANCE
(OTHER) BY AREA SUPPORT OFFICE AND CUSTOMER SERVICE CENTRE**

<i>Area Support Office and Customer Service Centre</i>	November 2007	December 2007	Variation	
			November - December Number	Per cent
<i>SOUTH WEST NEW SOUTH WALES</i>				
Batemans Bay	811	848	37	4.6
Bathurst	927	988	61	6.6
Bega	688	700	12	1.7
Belconnen	612	673	61	10.0
Bowral	436	475	39	8.9
Braddon	676	726	50	7.4
Cooma	284	273	-11	-3.9
Cowra	434	479	45	10.4
Dubbo	1,840	1,916	76	4.1
Goulburn	636	675	39	6.1
Griffith	561	579	18	3.2
Gungahlin	52	49	-3	%
Lanyon	28	30	2	%
Leeton	321	341	20	6.2
Lithgow	618	628	10	1.6
Mudgee	734	750	16	2.2
Narooma	367	371	4	1.1
Nowra	1,896	1,959	63	3.3
Orange	918	972	54	5.9
Parkes	904	936	32	3.5
Queanbeyan	377	375	-2	-0.5
Tuggeranong	423	446	23	5.4
Tumut	300	314	14	4.7
Ulladulla	514	517	3	0.6
Wagga	1,513	1,566	53	3.5
Woden	317	333	16	5.0
Yass	106	119	13	12.3
Young	423	433	10	2.4
Other (a)	15	20	5	%
Total	17,731	18,491	760	4.3

Note: For footnotes see end of table.

**TABLE 7 - JOB SEEKERS RECEIVING NEWSTART ALLOWANCE AND YOUTH ALLOWANCE
(OTHER) BY AREA SUPPORT OFFICE AND CUSTOMER SERVICE CENTRE**

<i>Area Support Office and Customer Service Centre</i>	November 2007	December 2007	Variation	
			November - December Number	Per cent
<i>NORTH CENTRAL VICTORIA</i>				
Airport West	864	957	93	10.8
Albury	1,929	2,043	114	5.9
Box Hill	1,372	1,435	63	4.6
Broadmeadows	2,919	3,166	247	8.5
Camberwell	717	784	67	9.3
Darebin	2,773	2,998	225	8.1
Deniliquin	295	297	2	0.7
Echuca	471	503	32	6.8
Epping	1,319	1,442	123	9.3
Greensborough	1,192	1,297	105	8.8
Heidelberg	21	29	8	%
Moreland	1,669	1,824	155	9.3
Newmarket	1,116	1,189	73	6.5
Seymour	549	570	21	3.8
Shepparton	1,951	2,068	117	6.0
South Melbourne	543	569	26	4.8
Sunbury	596	648	52	8.7
Wangaratta	1,407	1,452	45	3.2
Windsor	1,815	1,926	111	6.1
Yarra	1,482	1,579	97	6.5
Other (a)	19	16	-3	%
Total	25,019	26,792	1,773	7.1

Note: For footnotes see end of table.

**TABLE 7 - JOB SEEKERS RECEIVING NEWSTART ALLOWANCE AND YOUTH ALLOWANCE
(OTHER) BY AREA SUPPORT OFFICE AND CUSTOMER SERVICE CENTRE**

<i>Area Support Office and Customer Service Centre</i>	November 2007	December 2007	Variation	
			November - December Number	Per cent
<i>SOUTH EAST VICTORIA</i>				
Bairnsdale	756	764	8	1.1
Belgrave	345	363	18	5.2
Cheltenham	1,120	1,227	107	9.6
Cranbourne	929	983	54	5.8
Dandenong	2,067	2,113	46	2.2
Fountain Gate	1,406	1,519	113	8.0
Frankston	1,968	2,004	36	1.8
Glen Waverley	738	772	34	4.6
Hastings	451	438	-13	-2.9
Lilydale	1,243	1,293	50	4.0
Mornington	418	422	4	1.0
Morwell	2,036	2,072	36	1.8
Oakleigh	1,293	1,360	67	5.2
Pakenham	460	468	8	1.7
Ringwood	1,167	1,270	103	8.8
Rosebud	768	790	22	2.9
Rowville	290	322	32	11.0
Sale	652	653	1	0.2
Springvale	1,547	1,644	97	6.3
Wantirna	961	999	38	4.0
Warragul	465	505	40	8.6
Wonthaggi	467	483	16	3.4
Other (a)	11	10	-1	%
Total	21,558	22,474	916	4.2

Note: For footnotes see end of table.

**TABLE 7 - JOB SEEKERS RECEIVING NEWSTART ALLOWANCE AND YOUTH ALLOWANCE
(OTHER) BY AREA SUPPORT OFFICE AND CUSTOMER SERVICE CENTRE**

<i>Area Support Office and Customer Service Centre</i>	November 2007	December 2007	Variation	
			November - December Number	Per cent
WEST VICTORIA				
Ararat	227	240	13	5.7
Ballarat	2,047	2,205	158	7.7
Bendigo	2,200	2,270	70	3.2
Bendigo Central	349	422	73	20.9
Colac	408	418	10	2.5
Corio	1,474	1,543	69	4.7
Footscray	1,249	1,364	115	9.2
Geelong	2,600	2,738	138	5.3
Hamilton	374	381	7	1.9
Horsham	594	580	-14	-2.4
Maryborough	432	452	20	4.6
Melton	987	1,067	80	8.1
Mildura	1,605	1,711	106	6.6
Newport	898	955	57	6.3
Portland	380	382	2	0.5
Stawell	190	206	16	8.4
Sunshine	2,309	2,391	82	3.6
Swan Hill	742	771	29	3.9
Warrnambool	775	803	28	3.6
Watergardens	2,766	2,923	157	5.7
Werribee	2,063	2,193	130	6.3
Other (a)	1	8	7	%
Total	24,670	26,023	1,353	5.5

Note: For footnotes see end of table.

**TABLE 7 - JOB SEEKERS RECEIVING NEWSTART ALLOWANCE AND YOUTH ALLOWANCE
(OTHER) BY AREA SUPPORT OFFICE AND CUSTOMER SERVICE CENTRE**

<i>Area Support Office and Customer Service Centre</i>	November 2007	December 2007	Variation	
			November - December Number	Per cent
CENTRAL & NORTHERN QUEENSLAND				
Atherton	477	500	23	4.8
Ayr	248	269	21	8.5
Bamaga RASC (Nth Peninsula RASC)	38	40	2	%
Biloela	124	132	8	6.5
Bowen	253	322	69	27.3
Cairns Families	4	4	0	%
Cairns Jobseekers	2,048	2,156	108	5.3
Cairns Remote (Indigenous ISC)	556	560	4	0.7
Cairns Seniors & Carers	1	1	0	%
Charters Towers	238	239	1	0.4
Edmonton	0	1	1	%
Emerald	197	218	21	10.7
Gladstone	629	681	52	8.3
Greenfields	4	4	0	%
Ingham	215	243	28	13.0
Innisfail	412	447	35	8.5
Longreach	91	103	12	%
Mackay Jobseekers	930	986	56	6.0
Mackay Seniors & Carers	1	2	1	%
Mareeba	435	449	14	3.2
Mossman	279	288	9	3.2
Mt Isa	614	652	38	6.2
Normanton	116	112	-4	-3.4
Palm Island	255	255	0	0.0
Rockhampton Families	8	9	1	%
Rockhampton Jobseekers	1,430	1,529	99	6.9
Rockhampton Seniors & Carers	2	4	2	%
Smithfield	0	1	1	%
Thursday Island	170	191	21	12.4
Townsville City	2	3	1	%
Townsville Families	3	3	0	%
Townsville Jobseekers	1,865	1,960	95	5.1
Townsville Seniors & Carers	3	3	0	%
Western Cape RASC	142	156	14	9.9
Whitsunday	229	235	6	2.6
Yarrabah RASC	274	286	12	4.4
Yeppoon	264	297	33	12.5
Other (a)	77	124	47	%
Total	12,634	13,465	831	6.6

Note: For footnotes see end of the table.

**TABLE 7 - JOB SEEKERS RECEIVING NEWSTART ALLOWANCE AND YOUTH ALLOWANCE
(OTHER) BY AREA SUPPORT OFFICE AND CUSTOMER SERVICE CENTRE**

<i>Area Support Office and Customer Service Centre</i>	November 2007	December 2007	Variation	
			November - December Number	Per cent
<i>SOUTH & EAST QUEENSLAND</i>				
Bundaberg	2,302	2,405	103	4.5
Caboolture	1,455	1,532	77	5.3
Caboolture FCC and SC&R	0	0	0	%
Caloundra	755	758	3	0.4
Cherbourg	51	66	15	%
Chermside	684	703	19	2.8
Fortitude Valley	848	870	22	2.6
Gympie	963	1,071	108	11.2
Hervey Bay	987	1,031	44	4.5
Kawana Waters	321	330	9	2.8
Kingaroy	628	686	58	9.2
Kippa-Ring	942	961	19	2.0
Maroochydore	937	944	7	0.7
Maryborough	1,007	1,035	28	2.8
Mitchelton	543	631	88	16.2
Nambour	711	773	62	8.7
Noosa	655	664	9	1.4
Nundah	659	718	59	9.0
Strathpine	644	659	15	2.3
Toowong	524	619	95	18.1
Other (a)	18	17	-1	%
Total	15,634	16,473	839	5.4

Note: For footnotes see end of table.

**TABLE 7 - JOB SEEKERS RECEIVING NEWSTART ALLOWANCE AND YOUTH ALLOWANCE
(OTHER) BY AREA SUPPORT OFFICE AND CUSTOMER SERVICE CENTRE**

<i>Area Support Office and Customer Service Centre</i>	November 2007	December 2007	Variation	
			November - December Number	Per cent
<i>SOUTH & WEST QUEENSLAND</i>				
Beenleigh	1,113	1,155	42	3.8
Browns Plains	974	1,008	34	3.5
Capalaba	429	473	44	10.3
Charleville	139	172	33	23.7
Cleveland	508	533	25	4.9
Dalby	454	495	41	9.0
Goodna	657	682	25	3.8
Goondiwindi	301	320	19	6.3
Inala	944	1,001	57	6.0
Ipswich	1,541	1,604	63	4.1
Mt Gravatt	1,073	1,114	41	3.8
Roma	125	150	25	20.0
South Brisbane	614	656	42	6.8
Stanthorpe	334	343	9	2.7
Stones Corner	945	1,020	75	7.9
Toowoomba	1,703	1,818	115	6.8
Warwick	398	413	15	3.8
Woodridge	1,275	1,322	47	3.7
Wynnum	521	548	27	5.2
Other (a)	16	17	1	%
Total	14,064	14,844	780	5.5

Note: For footnotes see end of table.

**TABLE 7 - JOB SEEKERS RECEIVING NEWSTART ALLOWANCE AND YOUTH ALLOWANCE
(OTHER) BY AREA SUPPORT OFFICE AND CUSTOMER SERVICE CENTRE**

<i>Area Support Office and Customer Service Centre</i>	November 2007	December 2007	Variation	
			November - December Number	Per cent
<i>SOUTH AUSTRALIA</i>				
Berri	895	931	36	4.0
Broken Hill	775	795	20	2.6
Ceduna	245	269	24	9.8
Coober Pedy	162	179	17	10.5
Currie Street	545	561	16	2.9
Elizabeth	2,347	2,409	62	2.6
Enfield	1,335	1,410	75	5.6
Gawler	1,050	1,134	84	8.0
Glenelg	713	757	44	6.2
Kadina	665	670	5	0.8
Kilkenny	1,498	1,555	57	3.8
Marion	1,479	1,629	150	10.1
Modbury	1,508	1,588	80	5.3
Mt Barker	478	509	31	6.5
Mt Gambier	1,163	1,181	18	1.5
Murray Bridge	736	778	42	5.7
Noarlunga	2,186	2,268	82	3.8
Norwood	1,174	1,290	116	9.9
Port Adelaide	1,385	1,442	57	4.1
Port Augusta	668	714	46	6.9
Port Lincoln	568	593	25	4.4
Port Pirie	893	922	29	3.2
Salisbury	2,076	2,181	105	5.1
Torrensville	1,192	1,253	61	5.1
Victor Harbor	553	559	6	1.1
Whyalla	699	739	40	5.7
Other (a)	47	53	6	%
Total	27,035	28,369	1,334	4.9

Note: For footnotes see end of table.

**TABLE 7 - JOB SEEKERS RECEIVING NEWSTART ALLOWANCE AND YOUTH ALLOWANCE
(OTHER) BY AREA SUPPORT OFFICE AND CUSTOMER SERVICE CENTRE**

<i>Area Support Office and Customer Service Centre</i>	November 2007	December 2007	Variation	
			November - December Number	Per cent
WEST AUSTRALIA				
Albany	681	689	8	1.2
Armadale	626	666	40	6.4
Bunbury	1,192	1,229	37	3.1
Busselton	235	243	8	3.4
Cannington	940	967	27	2.9
Carnarvon	251	270	19	7.6
Cocos Islands	43	43	0	%
Collie	7	2	-5	%
Community Team Perth	60	73	13	%
Curtin on Campus SSC	13	48	35	%
Esperance	239	246	7	2.9
Fremantle	918	951	33	3.6
Fremantle SACC	3	2	-1	%
Fremantle SSC	17	32	15	%
Geraldton	1,086	1,041	-45	-4.1
Gosnells	666	670	4	0.6
Innaloo	881	946	65	7.4
Joondalup	837	907	70	8.4
Joondalup SACC	2	2	0	%
Joondalup SSC	26	36	10	%
Kalgoorlie	502	509	7	1.4
Karratha	252	256	4	1.6
Laverton RASC	54	59	5	%
Mandurah	803	821	18	2.2
Meekatharra RASC	138	150	12	8.7
Midland	1,381	1,460	79	5.7
Mirrabooka	1,109	1,218	109	9.8
Morley	1,055	1,118	63	6.0
Morley - Dewar Street	4	4	0	%
Morley SSC	14	20	6	%
Newman RASC	142	151	9	6.3
Northam	430	417	-13	-3.0
Rockingham	999	1,055	56	5.6
South Hedland	375	385	10	2.7
Spearwood	566	601	35	6.2
Victoria Park	1,083	1,111	28	2.6
Warwick Grove	453	488	35	7.7
Other (a)	43	52	9	%
Total	18,126	18,938	812	4.5

Note: For footnotes see end of table.

**TABLE 7 - JOB SEEKERS RECEIVING NEWSTART ALLOWANCE AND YOUTH ALLOWANCE
(OTHER) BY AREA SUPPORT OFFICE AND CUSTOMER SERVICE CENTRE**

<i>Area Support Office and Customer Service Centre</i>	November 2007	December 2007	Variation	
			November - December Number	Per cent
TASMANIA				
Bridgewater	543	592	49	9.0
Burnie	1,342	1,381	39	2.9
Devonport	1,547	1,569	22	1.4
Glenorchy	1,605	1,692	87	5.4
Hobart	1,150	1,255	105	9.1
Huonville	425	441	16	3.8
Launceston	2,893	3,047	154	5.3
Mowbray	2	4	2	%
Rosny Park	918	973	55	6.0
Sorell	469	483	14	3.0
Other (a)	39	59	20	%
Total	10,933	11,496	563	5.1
NORTH AUSTRALIA				
Alice Springs	2,342	2,985	643	27.5
Borroloola RASC	42	41	-1	%
Broome	375	373	-2	-0.5
Casuarina	756	795	39	5.2
Derby	111	125	14	12.6
Fitzroy Crossing RASC	30	49	19	%
Halls Creek RASC	126	146	20	15.9
Katherine	1,186	1,422	236	19.9
Knuckey Street	457	451	-6	-1.3
Kununurra	182	214	32	17.6
Maningrida	242	408	166	68.6
Nhulunbuy	458	663	205	44.8
Palmerston	677	718	41	6.1
Tangentyere	142	151	9	6.3
Tennant Creek	141	141	0	0.0
Tennant Creek Remote	68	109	41	%
Tiwi Islands RASC	191	191	0	0.0
Top End Remote	841	1,129	288	34.2
Wadeye RASC	348	396	48	13.8
Yuendumu RASC	152	157	5	3.3
Other (a)	26	30	4	%
Total	8,893	10,694	1,801	20.3

Note: For footnotes see end of table.

**TABLE 7 - JOB SEEKERS RECEIVING NEWSTART ALLOWANCE AND YOUTH ALLOWANCE
(OTHER) BY AREA SUPPORT OFFICE AND CUSTOMER SERVICE CENTRE**

<i>Area Support Office and Customer Service Centre</i>	November 2007	December 2007	Variation	
			November - December Number	Per cent
PACIFIC CENTRAL				
Ballina	863	886	23	2.7
Beaudesert	272	288	16	5.9
Biggera Waters	1,029	1,057	28	2.7
Bourke	448	450	2	0.4
Brunswick Heads	465	493	28	6.0
Byron Bay	470	466	-4	-0.9
Casino	554	557	3	0.5
Coffs Harbour	2,284	2,362	78	3.4
Grafton	1,417	1,469	52	3.7
Lightning Ridge	174	172	-2	-1.1
Lismore	1,542	1,678	136	8.8
Maclean	0	0	0	%
Moree	466	505	39	8.4
Murwillumbah	467	484	17	3.6
Narrabri	406	411	5	1.2
Nerang	1,062	1,125	63	5.9
Palm Beach	1,396	1,452	56	4.0
Robina SCR	4	4	0	%
Southport	1,502	1,576	74	4.9
Tweed Heads	1,067	1,109	42	3.9
Walgett	244	261	17	7.0
Other (a)	28	25	-3	%
Total	16,160	16,830	670	4.1
OTHER				
Centrelink Call Centres (b)	19	33	14	%
Not coded to an area	13	16	3	%
Rounding adjustment (c)	1	-53	-54	%
AUSTRALIA	286,471	302,027	15,556	5.4

(a) Recipients not coded to a Customer Service Centre.

(b) Job seekers receiving NSA / YA (o) in Centrelink Call Centres which are not counted in the various Area Offices.

(c) Prior to the July 2007 publication, the rounding adjustment was included in the Fairfield CSC.

Notes:

- Where the Customer Service Centre has a population less than 100 in either of the reported months, the monthly percentage variation has been suppressed and replaced with the percentage symbol '%'. .

- Most of the figures in this publication are averages and have been rounded. As a result, discrepancies may occur between sums of component items and totals, and in the calculation of variations.

- From July 2007, new Area Support Office boundaries came into effect. A concordance between the new and old Area structures is provided in Table A in the July 2007 edition of this publication.

**TABLE 8 - JOB SEEKERS RECEIVING NEWSTART ALLOWANCE AND YOUTH ALLOWANCE (OTHER)
FORTNIGHTLY EARNINGS (%) AND SEX (a), FORTNIGHT ENDING 21 DECEMBER 2007**

<i>Fortnightly Earnings</i>	Short-term job seekers	Long-term job seekers	Total job seekers
MALES			
Did not earn an income	84.3	80.3	82.2
Earned an income	15.7	19.7	17.8
Amount earned			
\$0.01-\$62.00	0.7	0.9	0.8
\$62.01-\$142.00	2.2	2.7	2.5
\$142.01-\$236.00	2.6	3.3	3.0
\$236.01-\$316.00	1.9	2.4	2.2
Over \$316.00	8.2	10.3	9.4
Total	100.0	100.0	100.0
<i>Job seekers receiving NSA and YA (other)</i>	85,679	98,294	183,973
FEMALES			
Did not earn an income	74.2	69.9	71.6
Earned an income	25.8	30.1	28.4
Amount earned			
\$0.01-\$62.00	1.0	1.2	1.1
\$62.01-\$142.00	3.4	3.6	3.5
\$142.01-\$236.00	3.9	4.5	4.2
\$236.01-\$316.00	3.1	3.5	3.3
Over \$316.00	14.5	17.4	16.2
Total	100.0	100.0	100.0
<i>Job seekers receiving NSA and YA (other)</i>	49,181	73,277	122,458
PERSONS			
Did not earn an income	80.6	75.9	78.0
Earned an income	19.4	24.1	22.0
Amount earned			
\$0.01-\$62.00	0.8	1.0	0.9
\$62.01-\$142.00	2.6	3.1	2.9
\$142.01-\$236.00	3.1	3.8	3.5
\$236.01-\$316.00	2.3	2.9	2.6
Over \$316.00	10.5	13.4	12.1
Total	100.0	100.0	100.0
<i>Job seekers receiving NSA and YA (other)</i>	134,860	171,571	306,431

(a) Total figures in this table are different from Tables 2 to 7 because of different methodologies applied. Tables 2 to 7 are based on averages of weekly figures while this table is based on point in time data. See Explanatory Notes for further information.

EXPLANATORY NOTES

Introduction

This publication provides monthly statistical information on DEEWR labour market and related payments delivered by Centrelink. These Explanatory Notes provide details of the scope and methodology of the publication, as well as the policy changes which have affected the data since the publication was introduced in December 1995 by the then Department of Social Security.

Prior to December 1995, this publication was titled the *Monthly Job Search and Newstart Allowance Statistics*.

Scope

The primary focus of the publication is to provide information on unemployed people on Newstart Allowance and Youth Allowance, with a particular focus on the total number of job seekers. The number of people on Mature Age Allowance, Partner Allowance and Widow Allowance are also reported.

Methodology

Data in this publication relate to the average number of people who are both eligible (eg. meet 'unemployed' qualification) and entitled (eg. meet income and assets criteria) to receive a payment calculated over a reference month. Averages are calculated using figures collected for each Friday throughout the reference month.

Table 1 provides information on the total number of unemployed people on Newstart Allowance and Youth Allowance. The Youth Allowance population is split into Youth Allowance (full-time students), Youth Allowance (Australian Apprentices) and Youth Allowance (other) categories. Numbers of people on Mature Age Allowance, Partner Allowance and Widow Allowance are also provided.

Tables 2 and 3 provide a summary of the Newstart Allowance and Youth Allowance (other) populations and show the derivation of the respective job seeker populations (see the reference to job seekers in the Comparability of Data section of these Explanatory Notes). These populations are added together to derive the total number of job seekers. Tables 4 to 8 provide information on the total job seeker population.

The earnings data in Table 8 is derived using a different methodology from that of the other tables in the publication. Table 8 is based on the combined population of job seekers who are eligible for and entitled to receive Newstart Allowance or Youth Allowance (other) at the end of the second last week in the month. Thus, the data obtained from this table will not be directly comparable with those calculated using monthly averages in other tables.

Payment History

Youth Allowance

From 1 July 1998 Youth Allowance was introduced to provide income support to young people, including students, those looking for work, and those who are sick. Youth Allowees may be undertaking full-time study, full-time job search or a combination of approved activities. Some young people will be exempt from the activity test because of their personal circumstances, eg. illness, homelessness or major personal crisis. The Youth Allowance replaced:

- AUSTUDY for 16-24 year olds (and certain 15 year olds);
- Newstart Allowance for 16-20 year olds (and certain 15 year olds);
- Youth Training Allowance for 16-17 year olds (and certain 15 year olds);
- Sickness Allowance for 16-20 year olds (and certain 15 year olds); and
- More-than-minimum rate Family Payment for secondary students aged 16-18 not getting AUSTUDY.

Youth Allowance recipients are subject to the parental means test. Under previous arrangements, unemployed people aged 18 to 20 were not subject to the parental means test, unlike 18 to 20 year old students.

Special provisions applied for 18 to 20 year olds who were already on Newstart or Sickness Allowance at the date of announcement of Youth Allowance, and who remained on payment when Youth Allowance commenced on 1 July 1998. This group were able to remain on their existing payment and retain their existing benefits.

Youth Allowance had a significant downward effect on Newstart Allowance numbers from July 1998 and total job seeker numbers due to the parental means test.

Newstart Allowance

From 1 July 1998, Newstart Allowance for 16-20 year olds (and certain 15 year olds) was replaced by Youth Allowance. Young people aged 18 to 20 years old who were on Newstart or Sickness Allowance at the date of announcement of Youth Allowance and when Youth Allowance commenced on 1 July 1998, were able to remain on Newstart Allowance.

From 20 September 1996, Job Search Allowance and Newstart Allowance were combined into one payment - Newstart Allowance - which was payable to eligible recipients aged 18 years and over and to some people who were in receipt of Job Search Allowance and aged under 18 at 31 December 1994 (see Job Search Allowance).

Prior to 20 September 1996, Newstart Allowance was payable to eligible persons over 18 years who had been registered as unemployed with the Commonwealth Employment Service (CES) for 12 months or more.

<i>Job Search Allowance</i>	<p>From 20 September 1996, the payment was combined with Newstart Allowance to form one payment called Newstart Allowance. All Job Search Allowance recipients were transferred to Newstart Allowance.</p> <p>Prior to 20 September 1996, Job Search Allowance was payable to eligible persons who had been registered as unemployed with the CES for up to 12 months. It was also payable to eligible persons who were in receipt of Job Search Allowance and under 18 years of age at 31 December 1994. Persons aged 15 to 18 years who were not receiving Job Search Allowance prior to 1 January 1995 commenced on Youth Training Allowance.</p>
<i>Sickness Allowance</i>	<p>From 17 March 1996, persons in receipt of Newstart Allowance or Youth Training Allowance who became temporarily incapacitated no longer transferred to Sickness Allowance after 13 weeks. This change had the effect of increasing total Newstart Allowance/Youth Training Allowance figures but did not affect job seeker figures as those recipients who were incapacitated were excluded from the Newstart and Youth Training job seeker populations.</p> <p>Under current arrangements, these recipients remain on their existing payments but are exempt from the activity test for the duration of their medical certificates. People who become unemployed because of illness, and those who suffer a potential loss of income due to sickness, are paid Newstart Allowance because they are unemployed.</p> <p>Sickness Allowance for 16 to 20 year olds (and certain 15 year olds) was replaced by Youth Allowance, which was introduced on 1 July 1998 (see Youth Allowance).</p>
<i>Partner Allowance</i>	<p>From 20 September 2003, Partner Allowance was closed to new claimants. People on Partner Allowance before this date can remain on the allowance while they remain 'current', that is retain eligibility and entitlement for the allowance.</p> <p>From 1 July 1995 Partner Allowance has only been granted to persons who are dependent partners of pensioners and allowees and who were born before 1 July 1955, have no dependent children and have little or no recent workforce experience. Other dependent partners have to qualify for an income support payment in their own right, such as Newstart Allowance.</p> <p>Partner Allowance was introduced in September 1994, and was paid to partners of persons receiving Job Search Allowance, Newstart Allowance, Sickness Allowance or Special Benefit if certain eligibility criteria were satisfied.</p>
<i>Youth Training Allowance</i>	<p>Youth Training Allowance was replaced by Youth Allowance on 1 July 1998 (see Youth Allowance).</p> <p>From 1 January 1995, eligible persons aged under 18 years who were new entrants to the job search pool were paid Youth Training Allowance. (People who were in receipt of Job Search</p>

Allowance and aged under 18 years at 31 December 1994 continued to be paid Job Search Allowance. From 20 September 1996, those young persons still being paid Job Search Allowance were transferred to Newstart Allowance.)

Widow Allowance Widow Allowance, introduced on 1 January 1995, is payable to females aged 50 years or over who have become widowed, divorced or separated since turning 40 years (50 prior to 20 March 1997), if they meet a number of other criteria relating to current marital status and recent work experience. This has had a slight downwards effect on Newstart Allowance numbers from January 1995.

Mature Age Allowance From 20 September 2003, Mature Age Allowance was closed to new claimants. People on Mature Age Allowance before this date can remain on the allowance while they remain 'current', that is retain eligibility and entitlement for the allowance.

From 1 July 1996, the qualification conditions for Mature Age Allowance changed for new claimants. The requirement for 12 months prior receipt of income support was reduced to 9 months for people transferring from Newstart Allowance and removed entirely for people transferring from non-activity tested payments. The requirement to have been registered as unemployed for 9 months was replaced with a requirement to have no recent workforce experience. Reporting of these new claimants commenced from September 1996.

Mature Age Allowance was introduced on 24 March 1994, and was paid to long-term unemployed persons aged 60 years and over (but below Age Pension age) who had been receiving income support for 9 months or more and who were eligible for Newstart Allowance. The introduction of Mature Age Allowance had a downwards effect on Newstart Allowance numbers from April 1994 until September 2003.

Comparability of Data

There have been significant changes to the data presented in this publication due to a number of events. The main changes are:

- the method of counting recipients;
- the inclusion of some CDEP recipients in the total recipient numbers;
- the introduction of Youth Allowance in July 1998;
- the way 'job seeker' is defined; and
- the way duration is calculated.

People using this data to construct time series should note the following comments.

Definition of Recipient From July 2002, the Department of Family and Community Services (FaCS) introduced a new method to more accurately measure the number of people receiving labour market and related payments. For those receiving labour market and related payments, their eligibility and entitlement status is administered by a payment system called Newstart Common Platform System. Within this system recipients who are both eligible and entitled to receive a payment have a determination status of 'current'.

The new method therefore counts these 'current' recipients.

The old method of counting recipients was specified to include all paid recipients - those who received a payment within a given fortnight. As compiled, however, this count excluded, from mid 1998, recipients who received a 'one-off' payment. These can occur, for instance, when a normal payment is interrupted (eg. payment is cancelled and then restored within that pay period) and a portion of the normal payment is paid.

The time series in Tables 1 and 4 reflect the revised method, as does the remainder of the publication. Revised historical data for these time series from May 1998 to June 2002 can be found in the July 2002 publication.

From July 2003 FaCS introduced a more sustainable methodology for this revised recipient count. Due to limitations in available data sources in 2002, the revised recipient count had to be derived through a complicated process. This more sustainable methodology resulted in slight differences from the recipient numbers used in previous editions.

*Community Development
Employment Projects
(CDEP)* From 20 March 2000, eligible participants in CDEP started receiving CDEP participant supplement and other add-ons, such as rent assistance, as part of income support payments. This added a number of new recipients to those eligible for payments reported in this publication.

*Introduction of
Youth Allowance* The sum of the number of Newstart Allowees and Youth Training Allowees prior to July 1998 is broadly comparable with the sum of Newstart Allowees and Youth Allowees (other) after July 1998. There are two main problems in comparing these two series. The first is the exclusion of some 18 to 20 year old unemployed people due to the application of the Youth Allowance parental means test (see the Youth Allowance section under Payment History). The second is the inclusion of Sickness Allowees in the Youth Allowance (other) population.

There is greater comparability between total Newstart Allowance and Youth Training Allowance job seekers prior to July 1998 and total Newstart Allowance and Youth Allowance (other) job seekers after July 1998. This is because the Sickness Allowance group is excluded from the job seeker total. The problem, however, of the exclusion of some recipients through the application of the Youth Allowance parental means test still remains.

Job seekers Prior to July 1998, the job seeker category was defined by excluding all Newstart Allowees who did not receive a payment, recipients who were incapacitated, and those receiving a payment who were undertaking training. Some people who were not required to engage in job search were classified as job seekers, including people undertaking full-time voluntary work, people on jury duty and pregnant women around the time of the birth of their child.

From July 1998, the definition of job seekers has been placed on a sounder conceptual basis. It is now derived for Newstart Allowance and Youth Allowance (other) recipients by excluding all people who did not receive a payment due to their own and/or their partner's income, or where applicable, parental income, and all those known not to be required to search for work. People receiving Intensive Support Customised Assistance under Job Network arrangements are classified as job seekers although they may not always be undertaking job search. These people negotiate their activity agreement with their Job Network member.

The total number of job seekers (comparable to pre-July 1998 estimates) is calculated by adding together the number of job seekers in receipt of Newstart Allowance and Youth Allowance (other) - see the Explanatory Notes on Youth Allowance.

Duration

Following system changes in May 1998, duration has been defined according to the time a recipient spends on income support - short-term recipients are those who have been on income support for up to 12 months and long-term recipients are those who have been on income support for 12 months or more.

Prior to 1998, duration was defined according to the time a recipient was registered as unemployed - short-term recipients were people who were registered as unemployed for up to 12 months and long-term recipients were people who were registered for 12 months or more.

Closure of Mature Age and Partner Allowances

From 20 September 2003, Mature Age Allowance and Partner Allowance were closed to new claimants. People on these allowances before this date can remain on that allowance while they remain 'current', that is retain eligibility and entitlement for the allowance. The majority of people who would previously have claimed these payments will now claim Newstart Allowance.

Symbols

n.a. not available
 .. not applicable

GLOSSARY

Activity test status	The activity that a Newstart Allowance or Youth Allowance (other) recipient has agreed to undertake in order to meet the activity test. To satisfy the activity test recipients must be actively seeking and willing to take up work or undertaking activities to improve their employment prospects.
Age	Age in years at time of data collection.
Area Support Office	A Centrelink office that supports a set of Customer Service Centres for a specified area. These are generally not confined to State boundaries.
Community Development Employment Projects (CDEP)	<p>The CDEP programme is administered by the Department of Families, Housing, Community Services and Indigenous Affairs (FaHCSIA) from December 2007 and was previously administered by the Department of Employment and Workplace Relations (DEWR). CDEP provides unemployed Indigenous people with activities designed to meet community needs and which develop participants' skills and improve their employability in order to assist them to move to employment outside the CDEP organisation. These activities can also lead to the development of business enterprises.</p> <p>The CDEP Participant Supplement (CPS) is payable to eligible CDEP participants. It can be paid fortnightly or as a 12 weekly payment.</p>
Customer Service Centre	A Customer Service Centre set within a particular region that provides FaHCSIA, DEEWR and other payments and related information and services to recipients. Customer Service Centres are managed by Area Support Offices.
Did not receive a payment	Persons who did not receive a payment due to their own income and/or that of their partner, or parents, where applicable. This group is often referred to as 'zero paid'.
Eligibility and payment status	Refer to the Methodology entry in the Explanatory Notes.
Fortnightly earnings	Amount of income earned, derived, or received by a person for the person's own use or benefit in the previous fortnight.
Incapacitated	A person on Newstart Allowance or Youth Allowance (other) who has an activity test status indicating they are temporarily ill or incapacitated. Refer to the entry for Sickness Allowance in the Explanatory Notes.
Job seekers	A person on Newstart Allowance or Youth Allowance (other) who would usually be engaged in jobsearch. See Explanatory Notes for definition and history.

Job Search Allowance (JSA)	Up to 20 September 1996, Job Search Allowance was payable to CES eligible persons who had been registered as unemployed with the CES for up to 12 months. From 20 September 1996, the payment was combined with Newstart Allowance to form one payment called Newstart Allowance. See Explanatory Notes for history.
Long-term recipients	Persons on Newstart Allowance or Youth Allowance who have been receiving income support for 12 months or more. Duration of long-term recipients can be reset to zero if they exited from payments for more than 13 weeks.
Mature Age Allowance (MAA)	From 20 September 2003, Mature Age Allowance was closed to new claimants. People on Mature Age Allowance before this date can remain on the allowance while they remain 'current', that is retain eligibility and entitlement for the allowance. Mature Age Allowance, a non-activity-tested payment, is payable to unemployed people aged 60 years and over (but below Age Pension age) with little or no recent workforce experience who meet certain requirements for previous receipt of income support. See Explanatory Notes for history.
Newstart Allowance (NSA)	Newstart Allowance is payable to eligible unemployed persons aged 21 years and over (but below Age Pension age) who satisfy the activity test. See Explanatory Notes for history.
Newstart Common Platform System (NCP)	The Newstart Common Platform System (NCP) was introduced in May 1998. The NCP administers all labour market and related payments. This includes primary payments such as Newstart Allowance, Youth Allowance, Mature Age Allowance, Widow Allowance and Partner Allowance. Other payments on the NCP include Special Benefit, Sickness Allowance, Exceptional Circumstances Relief, Farm Help and Austudy.
Partner Allowance (PA)	<p>From 20 September 2003, Partner Allowance was closed to new claimants. People on Partner Allowance before this date can remain on the allowance while they remain 'current', that is retain eligibility and entitlement for the allowance.</p> <p>Partner Allowance, a non-activity-tested payment, is payable to persons who are dependent partners of pensioners and allowees and who were born before 1 July 1955, have no dependent children and have little or no recent workforce experience. See Explanatory Notes for history.</p>
Short-term recipients	Persons on Newstart Allowance or Youth Allowance who have been receiving income support for less than 12 months. Duration of short-term recipients can be reset to zero if they exited from payments for more than 6 weeks.
States	States and Territories of Australia derived from the postcode of the recipient's residence as held on the Centrelink payment system.

Widow Allowance (WA)	<p>From 1 July 2005 Widow Allowance was closed to new claimants, unless the woman was born on or before 1 July 1955.</p> <p>Widow Allowance, a non-activity tested payment, is payable to females aged 50 years or over who have become widowed, divorced or separated since turning 40 years if they have little or no recent work experience and meet a number of other criteria relating to current marital status. See Explanatory Notes for history.</p>
Youth Training Allowance (YTA)	<p>From 1 January 1995 eligible persons aged under 18 years who were registered as unemployed with the CES were paid Youth Training Allowance. From 1 July 1998, Youth Training Allowance was replaced by Youth Allowance. See Explanatory Notes for history.</p>
Youth Allowance (YA)	<p>Youth Allowance is payable to eligible full-time students aged 16 to 25 years, and to eligible unemployed persons aged 16 to 20 years who satisfy the activity test. Note, there are certain exceptions for some 15 and 25 year olds. See Explanatory Notes for history.</p> <p>Youth Allowees may be undertaking full-time study, full-time job search or a combination of approved activities. Some young people will be exempt from the activity test because of their personal circumstances, eg. illness, homelessness or major personal crisis. See the Explanatory Notes for more information.</p>
Youth Allowance (other)	<p>Youth Allowance recipients who are not full-time students or full-time Australian Apprentices.</p>
Zero paid	<p>See 'Did not receive a payment'.</p>

APPENDIX

COMPARISONS BETWEEN DEEWR UNEMPLOYMENT LABOUR MARKET PAYMENT NUMBERS AND ABS LABOUR FORCE UNEMPLOYMENT STATISTICS

Official statistics	Official unemployment statistics are released by the Australian Bureau of Statistics (ABS). The ABS uses definitions recommended by the International Labour Office which have been accepted internationally as the most appropriate for the compilation of official statistics of unemployment.
ABS definition	The ABS unemployment statistics measure the number of persons who, for a particular reference period, did not undertake any paid work, were actively looking for work and were available to start work.
DEEWR Unemployment Labour Market Payment Statistics	The labour market payment statistics give the number of persons who are both eligible and entitled to receive Newstart Allowance or Youth Allowance (other). The criteria for receipt of these payments do not match those the ABS uses to determine whether a person is classed as unemployed or employed for statistical purposes.
Differences	Care should be taken when comparing the ABS labour force and DEEWR labour market payment data. There are a number of reasons why the two series cannot be directly compared.
<i>Duration</i>	<p>Both DEEWR and the ABS classify long-term duration as over 12 months, but use substantially different definitions of duration:</p> <p>DEEWR measures duration of income support. This includes not just time on unemployment benefits but time on any income support payment.</p> <p>The ABS measures length of time unemployed using their unemployment definition.</p> <p>DEEWR unemployed recipients can have breaks without payment for up to 25 weeks but still be classified as long-term income support recipients:</p> <ul style="list-style-type: none">• Recipients who do not receive a payment due to their earnings can have up to 12 weeks without a payment before they are automatically cancelled. This reduces disincentives to accept short-term work.• Long-term recipients can have another 13 weeks off payment after payment is cancelled and still keep their long-term status if they return to income support. This means they keep access to assistance such as the Employment Entry Payment and the higher payment rate for recipients over 60.

For the ABS statistics, any hours of work for a period as short as two weeks count as a break from unemployment and so are enough to reset a person's unemployment duration.

The difference between these two concepts, together with the fact that DEEWR recipients are able to have ongoing part-time work (see 'employment' below) mean that many unemployed recipients remain classified by DEEWR as long-term recipients when they would be classified as short-term unemployed under the ABS definition.

<i>Seasonal adjustment</i>	The ABS produces a seasonally adjusted series. The DEEWR labour market payment numbers data are not seasonally adjusted.
<i>Classification</i>	<p>The ABS classifies a person as unemployed if he or she is aged 15 years and over, was not employed during the week before the interview, has actively looked for full-time or part-time work and is available to start work. From February 2004, people who had not actively looked for work because they were waiting to start a job within four weeks are also classified as unemployed.</p> <p>The Newstart Allowance and Youth Allowance (other) series generally count people who are eligible for and entitled to receive a payment between the ages of 15 years and 64 years in the case of men and 15 to 63 years in the case of women.</p>
<i>Employment</i>	Newstart Allowance and Youth Allowance (other) recipients may be employed part-time, but within an income test limit; the ABS classifies a person as "employed" if, among other things, he or she has worked for one hour or more during the survey period.
<i>Timing</i>	<p>The timing of collections of the series are different:</p> <ul style="list-style-type: none">• DEEWR reports monthly average numbers of people both eligible for and entitled to receive Newstart Allowance and Youth Allowance (other). These monthly averages are calculated using figures collected for each Friday throughout the reference month.• ABS numbers are based on a sample interview survey of occupants of selected dwellings covering around 0.5% of the total Australian population. These persons are interviewed during the two weeks beginning the Monday between the 6th and 12th of each month and the information obtained is based on the week before the interview takes place.
<i>Treatment of partners</i>	The ABS series includes unemployed persons whose spouse is working, irrespective of income, whereas Newstart Allowance and Youth Allowance (other) recipients are subject to an income and assets test for themselves and their spouse.
<i>Pensioners</i>	The ABS series includes persons being paid a pension but looking for work (eg. sole parents in receipt of Parenting Payments looking for work).

<i>Non job seekers</i>	The overall Newstart Allowance and Youth Allowance (other) series includes persons who are not required to undertake jobsearch. These persons are separately identified in Tables 2 and 3, and have then been excluded in subsequent tables. These people may be undertaking training, the development of self-employment opportunities, full-time voluntary work or a combination of voluntary and part-time work which excludes them from jobsearch obligations. They may also be incapacitated or have another temporary exemption from jobsearch.
<i>Waiting periods</i>	The ABS series includes persons who are serving a waiting period before being granted Newstart Allowance or Youth Allowance (other), or whose allowance was deferred.
<i>Survey</i>	The ABS figures are derived from a Labour Force Survey which is a sample survey, whereas the DEEWR statistics are a complete count of those both eligible for and entitled to receive Newstart Allowance and Youth Allowance (other).

FOR MORE INFORMATION

Labour market information

Other statistics on recipients of labour market related payments are available on request.

In addition to Newstart and Youth Allowances, statistics are also available on Partner Allowance, Mature Age Allowance and Widow Allowance.

For publication distribution enquiries email:
MI.WORKINGAGE.PAYMENTS@centrelink.gov.au

Written correspondence concerning this publication or statistics on labour market related payments should be addressed to:

Director
Income Support Information Section
Department of Education, Employment and Workplace Relations
PO Box 9879
Canberra Mail Centre ACT 2601

or forwarded via facsimile to (02) 6275 3328.

Other recipient information

Statistics relating to other recipients are also available, including recipient numbers and characteristics for the various FaHCSIA pensions, benefits and family payments.

Other statistical outputs

The following statistical outputs are available on request:

Department of Families, Housing, Community Services and Indigenous Affairs (FaHCSIA)
Income Support Customers: a Statistical Overview
1996, 1997, 1998, 1999, 2000, 2001, 2002, 2003 and 2004.