

LABOUR MARKET AND RELATED PAYMENTS

a monthly profile

Note: The Australian Bureau of Statistics (ABS) produces the official unemployment statistics. The figures contained in this publication are different from the ABS unemployment figures as the ABS and the Department of Education, Employment and Workplace Relations (DEEWR) use different definitions to identify the unemployed and different methods of counting (see the Appendix for more information).

This publication can be found at <http://www.workplace.gov.au/lmrp>

June 2008

Embargoed

Until 11.30 am, 23 July 2008

Annual Subscription - \$65.00

CONTENTS

	<i>Page</i>
Introduction	1
Statistical Highlights	2
Tables	
1. Labour Market Payments - Time Series	3
2. Newstart Allowees - Derivation of the job seeker population	4
3. Youth Allowees (other) - Derivation of the job seeker population	5
4. Job seekers receiving Newstart Allowance and Youth Allowance (other) - Time Series	6
5. Job seekers receiving Newstart Allowance and Youth Allowance (other) by State	7
6. Job seekers receiving Newstart Allowance and Youth Allowance (other) by Age and Sex	8
7. Job seekers receiving Newstart Allowance and Youth Allowance (other) by Area Support Office and Customer Service Centre	9
8. Job seekers receiving Newstart Allowance and Youth Allowance (other) by Fortnightly Earnings and Sex	23
Explanatory Notes	24
Glossary	30
Appendix	33
For More Information	36

INTRODUCTION

This publication presents statistical information on a monthly basis for the various types of labour market payments delivered by Centrelink on behalf of the Department of Education, Employment and Workplace Relations (DEEWR). This publication was produced previously by the Department of Employment and Workplace Relations (DEWR).

This publication covers NSA and YA(o) in some detail, and to a lesser extent, MAA, PA, WA, YA(FTS) and YA (Australian Apprentices).

Table 1 provides information on the total number of NSA and YA recipients. The YA population is broken down into YA(o), YA(FTS) and YA(Australian Apprentices) categories. The total numbers of MAA, PA and WA recipients are also provided in this table.

Tables 2 and 3 show the derivation of the NSA and YA(o) job seeker populations (see the reference to job seekers in the 'Comparability of data' section of the Explanatory Notes). These populations are added together to derive the total number of job seekers.

Tables 4 to 8 provide information on the total job seeker population.

When using time series figures, it is important to note that changes have occurred over time to the conditions of eligibility for different payments. Details of these changes are provided in the Explanatory Notes.

All media inquiries should be directed to the Centrelink National Media Officer on (02) 6284 6442. For more general inquiries regarding further statistical information please refer to the last page of this publication for other contact details.

The next issue of this publication is scheduled for release on 20 August 2008.

STATISTICAL HIGHLIGHTS – June 2008

Between June 2007 and June 2008:

Total Newstart Allowance (NSA) recipients and Youth Allowance (other) (YA(o)) recipients **decreased by 5.3%** overall from 520,585 to 492,868 and

- ◆ decreased 5.3% for NSA from 452,733 to 428,896 and
- ◆ decreased 5.7% for YA(o) from 67,852 to 63,972.

The number of job seekers **decreased by 10.9%** overall from 326,164 to 290,583 and

- ◆ decreased 12.1% for NSA recipients from 274,151 to 240,869 and
- ◆ decreased 4.4% for YA(o) recipients from 52,013 to 49,714.

Long-term job seekers decreased by 15.2% from 177,562 to 150,517.

Short-term job seekers decreased by 5.7% from 148,602 to 140,066.

For comparisons between DEEWR unemployment labour market payment numbers and ABS labour force unemployment statistics, see Appendix.

**Newstart Allowance and Youth Allowance (other)
June 2006 to June 2008**

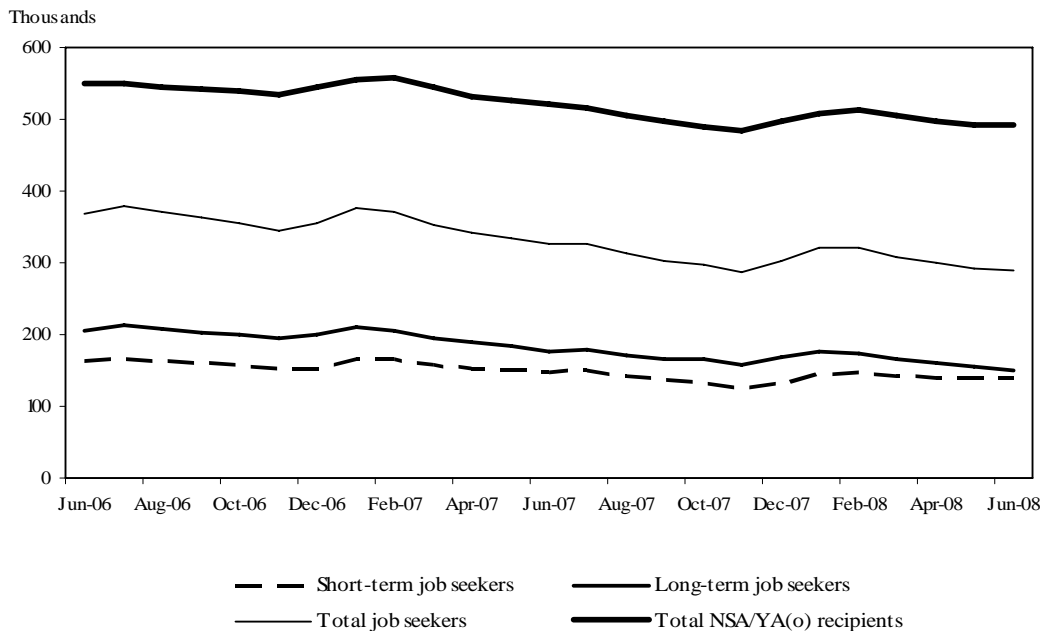


TABLE 1 - LABOUR MARKET PAYMENTS - TIME SERIES (a)

	Newstart Allowance		Youth Allowance			Mature Age Allowance	Partner Allowance	Widow Allowance
	Long-term (b)	Total	Other	Full-time Students (c)	Australian Apprentices (d)			
February 1994 (e)	472,785	977,796
June 2006	284,288	474,125	75,366	270,081	3,323	12,110	60,829	45,096
July 2006	285,152	474,477	76,173	264,863	3,376	11,379	59,401	44,639
August 2006	284,943	472,448	72,634	271,591	3,472	10,731	58,213	44,184
September 2006	285,218	472,222	71,104	276,235	3,643	10,049	56,965	43,705
October 2006	284,276	470,340	69,511	277,061	3,740	9,430	55,683	43,349
November 2006	282,694	466,631	68,721	267,042	3,683	8,892	54,611	43,112
December 2006	284,499	469,233	76,480	226,902	3,571	8,293	53,398	42,903
January 2007	286,614	478,033	77,358	216,869	3,487	7,745	52,205	42,530
February 2007	286,113	481,343	76,036	223,780	3,715	7,287	51,251	42,370
March 2007	281,937	473,278	71,619	239,502	4,087	6,751	50,058	42,032
April 2007	277,688	463,732	68,746	250,660	4,250	6,235	48,912	41,619
May 2007	274,568	458,297	67,973	256,805	4,341	5,790	47,896	41,245
June 2007	271,439	452,733	67,852	261,197	4,435	5,284	46,709	40,886
July 2007	269,816	448,833	67,617	256,808	4,416	4,796	45,917	40,735
August 2007	267,972	442,112	63,717	263,166	4,490	4,381	45,459	40,853
September 2007	266,180	435,711	62,042	265,669	4,509	3,981	45,058	41,019
October 2007	264,434	429,811	59,920	264,829	4,350	3,619	44,695	41,156
November 2007	261,930	424,168	59,967	249,546	4,093	3,242	44,358	41,278
December 2007	264,127	428,962	69,320	215,158	3,956	2,868	43,997	41,400
January 2008	266,199	437,918	69,709	206,509	3,746	2,518	43,434	41,297
February 2008	266,368	443,916	69,728	213,384	3,897	2,149	42,512	41,014
March 2008	263,759	438,786	65,889	227,301	4,094	1,797	41,528	40,729
April 2008	260,541	433,674	63,680	236,930	4,274	1,503	40,708	40,503
May 2008	257,363	429,363	63,395	245,421	4,419	1,166	39,804	40,124
June 2008	255,550	428,896	63,972	252,180	4,444	856	38,915	39,702
<i>Variation May 2008 - June 2008</i>								
Number	-1,813	-467	577	6,759	25	-310	-889	-422
Per cent	-0.7	-0.1	0.9	2.8	0.6	-26.6	-2.2	-1.1

(a) This table presents data using the revised method of measuring the number of people receiving labour market payments introduced in July 2002. Revised historical data from May 1998 to June 2002 is in Table A (May 1998 - June 2000) and Table 1 (July 2000 - July 2002) of July 2002 publication.

(b) Long-term Newstart allowees are persons who have been receiving income support for 12 months or more.

(c) The number of full time students does not include those who have traded in their entire Youth Allowance entitlement for a loan under the Student Financial Supplement Loan Scheme. The Government announced on 24 April 2003 that no further loans would be issued under this Scheme from 1 January 2004. For further details, refer to the Explanatory Notes at the back of this publication.

(d) Australian Apprenticeships combine employment with structured training to provide a nationally recognised qualification. Australian Apprentices enter formal agreements known as either 'Training Agreements' or 'Contracts of Training' which set out the relationship between the employer and the Australian Apprentice and their respective rights and responsibilities.

(e) February 1994 data has been included for comparison purposes due to the peak in the number of persons receiving JSA/NSA at this point in time.

Notes:

- Most of the figures in this publication are averages and have been rounded. As a result, discrepancies may occur between sums of component items and totals, and in the calculation of variations.

TABLE 2 - NEWSTART ALLOWEES - DERIVATION OF THE JOB SEEKER POPULATION

	May 2008	June			Variation May - June	
		Males	Females	Persons	Number	Per cent
Short-term NSA Customers	172,000	110,546	62,800	173,346	1,346	0.8
CPS recipients (a)	2,482	1,890	628	2,518	36	1.5
Did not receive a payment (b)	9,299	5,143	4,178	9,321	22	0.2
Received a payment	160,219	103,513	57,994	161,507	1,288	0.8
Incapacitated (c)	15,901	9,433	6,624	16,057	156	1.0
Training	12,726	8,378	4,654	13,032	306	2.4
Self-employment development (d)	276	156	102	258	-18	-6.5
Voluntary/part-time work (e)	4,401	1,487	3,095	4,582	181	4.1
Other/temporary exemptions (f)	13,126	7,837	5,696	13,533	407	3.1
Short-term NSA job seekers (g)	113,789	76,222	37,823	114,045	256	0.2
Long-term NSA Customers	257,363	149,180	106,370	255,550	-1,813	-0.7
CPS recipients (a)	6,635	4,485	2,159	6,644	9	0.1
Did not receive a payment (b)	9,263	4,583	4,401	8,984	-279	-3.0
Received a payment	241,465	140,112	99,810	239,922	-1,543	-0.6
Incapacitated (c)	17,444	9,382	7,987	17,369	-75	-0.4
Training	54,110	33,369	21,535	54,904	794	1.5
Self-employment development (d)	92	44	44	88	-4	-4.3
Voluntary/part-time work (e)	14,487	7,579	7,564	15,143	656	4.5
Other/temporary exemptions (f)	25,207	14,997	10,597	25,594	387	1.5
Long-term NSA job seekers (g)	130,125	74,741	52,083	126,824	-3,301	-2.5
All NSA Customers	429,363	259,726	169,170	428,896	-467	-0.1
CPS recipients (a)	9,117	6,375	2,787	9,162	45	0.5
Did not receive a payment (b)	18,562	9,726	8,579	18,305	-257	-1.4
Received a payment	401,684	243,625	157,804	401,429	-255	-0.1
Incapacitated (c)	33,345	18,815	14,611	33,426	81	0.2
Training	66,836	41,747	26,189	67,936	1,100	1.6
Self-employment development (d)	368	200	146	346	-22	-6.0
Voluntary/part-time work (e)	18,888	9,066	10,659	19,725	837	4.4
Other/temporary exemptions (f)	38,333	22,834	16,293	39,127	794	2.1
All NSA job seekers (g)	243,914	150,963	89,906	240,869	-3,045	-1.2

(a) Persons with NSA eligibility who received CDEP Participant Supplement or add ons while participating in CDEP Projects.

(b) Persons who did not receive a payment due to their income and/or that of their partner. This group is often referred to as zero-paid.

(c) Activity code "incapacitated" relates to NSA recipients who have become temporarily ill or incapacitated.

(d) Those customers exempted from job search while they develop self-employment opportunities.

(e) Those customers undertaking approved full-time voluntary work or combinations of voluntary and part-time work who are not required to seek work.

(f) Includes other customers known not to have job search obligations. See 'Job seekers' in Explanatory Notes.

(g) Those customers who received a payment and generally are required to search for work. These customers form the basis of the population group in Tables 4 - 7.

Notes:

- For information on short-term and long-term categories please refer to the Glossary.

- Most of the figures in this publication are averages and have been rounded. As a result, discrepancies may occur between sums of component items and totals, and in the calculation of variations.

TABLE 3 - YOUTH ALLOWEES (OTHER) - DERIVATION OF THE JOB SEEKER POPULATION

	May 2008	June			Variation May - June	
		Males	Females	Persons	Number	Per cent
Short-term YA (other) Customers	31,592	17,273	15,455	32,728	1,136	3.6
CPS recipients (a)	1,145	780	420	1,200	55	4.8
Did not receive a payment (b)	707	303	360	663	-44	-6.2
Received a payment	29,740	16,190	14,675	30,865	1,125	3.8
Part-time study & work (c)	4	1	2	3	-1	-25.0
Part-time study & other YA activities (d)	65	26	43	69	4	6.2
Incapacitated (e)	1,643	823	855	1,678	35	2.1
Training	1,387	873	549	1,422	35	2.5
Self-employment development (e)	6	3	3	6	0	0.0
Full-time voluntary work	0	0	0	0	0	0.0
Other non-job seekers (e)	1,616	676	990	1,666	50	3.1
Short-term YA (other) job seekers (f)	25,019	13,788	12,233	26,021	1,002	4.0
Long-term YA (other) Customers	31,803	14,584	16,660	31,244	-559	-1.8
CPS recipients (a)	928	571	351	922	-6	-0.6
Did not receive a payment (b)	1,106	395	584	979	-127	-11.5
Received a payment	29,769	13,618	15,725	29,343	-426	-1.4
Part-time study & work (c)	2	1	2	3	1	50.0
Part-time study & other YA activities (d)	52	33	33	66	14	26.9
Incapacitated (e)	1,160	414	716	1,130	-30	-2.6
Training	3,090	1,681	1,458	3,139	49	1.6
Self-employment development (e)	2	1	1	2	0	0.0
Full-time voluntary work	0	0	0	0	0	0.0
Other non-job seekers (e)	1,275	480	830	1,310	35	2.7
Long-term YA (other) job seekers (f)	24,188	11,008	12,685	23,693	-495	-2.0
All YA (other) Customers	63,395	31,857	32,115	63,972	577	0.9
CPS recipients (a)	2,073	1,351	771	2,122	49	2.4
Did not receive a payment (b)	1,813	698	944	1,642	-171	-9.4
Received a payment	59,509	29,808	30,400	60,208	699	1.2
Part-time study & work (c)	6	2	4	6	0	0.0
Part-time study & other YA activities (d)	117	59	76	135	18	15.4
Incapacitated (e)	2,803	1,237	1,571	2,808	5	0.2
Training	4,477	2,554	2,007	4,561	84	1.9
Self-employment development (e)	8	4	4	8	0	0.0
Full-time voluntary work	0	0	0	0	0	0.0
Other non-job seekers (e)	2,891	1,156	1,820	2,976	85	2.9
All YA (other) job seekers (f)	49,207	24,796	24,918	49,714	507	1.0

(a) Persons with YA eligibility who received CDEP Participant Supplement or add ons while participating in CDEP projects.

(b) Persons who did not receive a payment due to their own income and/or that of their partner or parents, where applicable. This group is often referred to as zero-paid.

(c) Those customers undertaking approved part-time study and work who are considered to have a full activity load and are not required to seek work.

(d) Those customers undertaking approved part-time study and other activities who are considered to have a full activity load and are not required to seek work.

(e) These categories are defined in the same way as in Table 2, except that those customers combining these activities with part-time study are classified under part-time study and other activities.

(f) Those customers who received a payment and generally are required to search for work. These customers form the basis of the population group in Tables 4 - 7.

Notes:

- For information on short-term and long-term categories please refer to the Glossary.

- Most of the figures in this publication are averages and have been rounded. As a result, discrepancies may occur between sums of component items and totals, and in the calculation of variations.

TABLE 4 - JOB SEEKERS RECEIVING NEWSTART ALLOWANCE AND YOUTH ALLOWANCE (OTHER)
TIME SERIES (a)

	Short-term	Long-term	Total
June 2006	162,331	205,212	367,543
July 2006	165,898	213,281	379,179
August 2006	161,929	207,905	369,834
September 2006	159,462	203,024	362,486
October 2006	156,815	198,967	355,782
November 2006	152,125	193,719	345,844
December 2006	153,342	201,044	354,386
January 2007	165,924	209,395	375,319
February 2007	165,581	205,384	370,965
March 2007	157,827	195,351	353,178
April 2007	153,350	188,871	342,221
May 2007	151,083	183,234	334,317
June 2007	148,602	177,562	326,164
July 2007	149,043	178,467	327,510
August 2007	141,433	171,107	312,540
September 2007	136,186	166,762	302,948
October 2007	132,332	164,716	297,048
November 2007	127,425	159,046	286,471
December 2007	132,454	169,573	302,027
January 2008	145,046	177,005	322,051
February 2008	147,610	173,316	320,926
March 2008	141,568	165,748	307,316
April 2008	139,811	160,030	299,841
May 2008	138,808	154,313	293,121
June 2008	140,066	150,517	290,583
<i>Variation May 2008 - June 2008</i>			
Number	1,258	-3,796	-2,538
Per cent	0.9	-2.5	-0.9

(a) This table presents data using the revised method of measuring the number of people receiving labour market payment introduced in July 2002. Revised historical data from May 1998 to June 2002 is in Table B of July 2002 publication.

Notes:

- For information on short-term and long-term categories please refer to the Glossary.

- Most of the figures in this publication are averages and have been rounded. As a result, discrepancies may occur between sums of component items and totals, and in the calculation of variations.

**TABLE 5 - JOB SEEKERS RECEIVING NEWSTART ALLOWANCE AND YOUTH ALLOWANCE (OTHER)
BY STATE**

<i>State</i>	May 2008	June 2008	Variation May - June	
			Number	Per cent
SHORT-TERM JOB SEEKERS				
New South Wales	49,010	49,367	357	0.7
Victoria	31,473	31,721	248	0.8
Queensland	27,862	28,091	229	0.8
South Australia	11,471	11,477	6	0.1
Western Australia	11,012	11,260	248	2.3
Tasmania	3,717	3,849	132	3.6
Northern Territory	3,151	3,169	18	0.6
Australian Capital Territory	1,112	1,132	20	1.8
AUSTRALIA	138,808	140,066	1,258	0.9
LONG-TERM JOB SEEKERS				
New South Wales	57,014	55,756	-1,258	-2.2
Victoria	37,214	36,054	-1,160	-3.1
Queensland	22,659	22,041	-618	-2.7
South Australia	14,527	14,168	-359	-2.5
Western Australia	9,029	8,869	-160	-1.8
Tasmania	6,289	6,195	-94	-1.5
Northern Territory	6,512	6,364	-148	-2.3
Australian Capital Territory	1,069	1,070	1	0.1
AUSTRALIA	154,313	150,517	-3,796	-2.5
TOTAL JOB SEEKERS				
New South Wales	106,024	105,123	-901	-0.8
Victoria	68,687	67,775	-912	-1.3
Queensland	50,521	50,132	-389	-0.8
South Australia	25,998	25,645	-353	-1.4
Western Australia	20,041	20,129	88	0.4
Tasmania	10,006	10,044	38	0.4
Northern Territory	9,663	9,533	-130	-1.3
Australian Capital Territory	2,181	2,202	21	1.0
AUSTRALIA	293,121	290,583	-2,538	-0.9

Notes:

- Most of the figures in this publication are averages and have been rounded. As a result, discrepancies may occur between sums of component items and totals, and in the calculation of variations.

**TABLE 6 - JOB SEEKERS RECEIVING NEWSTART ALLOWANCE AND YOUTH ALLOWANCE (OTHER)
BY AGE AND SEX, AS AT JUNE 2008**

Age	Short-term job seekers		Long-term job seekers		Total job seekers	
	Number	Per cent	Number	Per cent	Number	Per cent
MALES						
Less than 18 years	4,523	5.0	2,121	2.5	6,644	3.8
18 - 20 years	9,265	10.3	8,886	10.4	18,151	10.3
21 - 24 years	14,612	16.2	9,757	11.4	24,369	13.9
25 - 29 years	14,394	16.0	10,401	12.1	24,795	14.1
30 - 39 years	21,668	24.1	18,241	21.3	39,909	22.7
40 - 49 years	13,998	15.6	15,196	17.7	29,194	16.6
50 - 59 years	8,346	9.3	13,140	15.3	21,486	12.2
60 years and over	3,205	3.6	8,007	9.3	11,212	6.4
Total	90,011	100.0	85,749	100.0	175,760	100.0
FEMALES						
Less than 18 years	4,668	9.3	2,760	4.3	7,428	6.5
18 - 20 years	7,565	15.1	9,925	15.3	17,490	15.2
21 - 24 years	8,000	16.0	7,345	11.3	15,345	13.4
25 - 29 years	5,258	10.5	5,189	8.0	10,447	9.1
30 - 39 years	7,736	15.5	9,974	15.4	17,710	15.4
40 - 49 years	8,593	17.2	13,842	21.4	22,435	19.5
50 - 59 years	6,473	12.9	11,910	18.4	18,383	16.0
60 years and over	1,762	3.5	3,823	5.9	5,585	4.9
Total	50,055	100.0	64,768	100.0	114,823	100.0
PERSONS						
Less than 18 years	9,191	6.6	4,881	3.2	14,072	4.8
18 - 20 years	16,830	12.0	18,811	12.5	35,641	12.3
21 - 24 years	22,612	16.1	17,102	11.4	39,714	13.7
25 - 29 years	19,652	14.0	15,590	10.4	35,242	12.1
30 - 39 years	29,404	21.0	28,215	18.7	57,619	19.8
40 - 49 years	22,591	16.1	29,038	19.3	51,629	17.8
50 - 59 years	14,819	10.6	25,050	16.6	39,869	13.7
60 years and over	4,967	3.5	11,830	7.9	16,797	5.8
Total	140,066	100.0	150,517	100.0	290,583	100.0

**TABLE 7 - JOB SEEKERS RECEIVING NEWSTART ALLOWANCE AND YOUTH ALLOWANCE
(OTHER) BY AREA SUPPORT OFFICE AND CUSTOMER SERVICE CENTRE**

<i>Area Support Office and Customer Service Centre</i>	May 2008	June 2008	Variation May - June	
			Number	Per cent
<i>SYDNEY EAST NEW SOUTH WALES</i>				
Bankstown	3,003	2,930	-73	-2.4
Bondi Junction	893	864	-29	-3.2
Burwood	1,283	1,274	-9	-0.7
Campsie	2,061	2,054	-7	-0.3
Caringbah	1,024	998	-26	-2.5
Chatswood	676	701	25	3.7
Corrimal	953	931	-22	-2.3
Dapto	1,022	1,025	3	0.3
Darlinghurst	1,272	1,254	-18	-1.4
Darlinghurst CCU	38	33	-5	%
Haymarket	1	0	-1	%
Hornsby	609	579	-30	-4.9
Hurstville	1,163	1,111	-52	-4.5
Lakemba	24	23	-1	%
Leichhardt	1,050	1,015	-35	-3.3
Maroubra	1,102	1,076	-26	-2.4
Marrickville	1,207	1,222	15	1.2
Northern Beaches	868	863	-5	-0.6
Participation Sydney East	10	12	2	%
Redfern	1,057	1,017	-40	-3.8
Revesby	5	4	-1	%
Rockdale	1,074	1,059	-15	-1.4
Ryde	702	671	-31	-4.4
Shellharbour	1,267	1,264	-3	-0.2
Sutherland	349	356	7	2.0
Wollongong	1,228	1,236	8	0.7
Other (a)	12	8	-4	%
Total	23,953	23,580	-373	-1.6

Note: For footnotes see end of table.

**TABLE 7 - JOB SEEKERS RECEIVING NEWSTART ALLOWANCE AND YOUTH ALLOWANCE
(OTHER) BY AREA SUPPORT OFFICE AND CUSTOMER SERVICE CENTRE**

<i>Area Support Office and Customer Service Centre</i>	May 2008	June 2008	Variation May - June	
			Number	Per cent
<i>SYDNEY WEST NEW SOUTH WALES</i>				
Auburn	1,736	1,709	-27	-1.6
Baulkham Hills	515	522	7	1.4
Blacktown	2,470	2,460	-10	-0.4
Cabramatta	1,772	1,726	-46	-2.6
Camden	522	553	31	5.9
Campbelltown	1,898	1,893	-5	-0.3
Fairfield	2,644	2,629	-15	-0.6
Hawkesbury	741	750	9	1.2
Ingleburn	1,158	1,165	7	0.6
Katoomba	656	642	-14	-2.1
Liverpool	3,061	3,017	-44	-1.4
Merrylands	1,473	1,458	-15	-1.0
Mt Druitt	2,463	2,487	24	1.0
Parramatta	1,505	1,456	-49	-3.3
Penrith	1,541	1,545	4	0.3
Springwood	327	314	-13	-4.0
St Marys	1,348	1,331	-17	-1.3
Other (a)	39	27	-12	%
Total	25,869	25,684	-185	-0.7

Note: For footnotes see end of table.

**TABLE 7 - JOB SEEKERS RECEIVING NEWSTART ALLOWANCE AND YOUTH ALLOWANCE
(OTHER) BY AREA SUPPORT OFFICE AND CUSTOMER SERVICE CENTRE**

<i>Area Support Office and Customer Service Centre</i>	May 2008	June 2008	Variation May - June	
			Number	Per cent
HUNTER NEW SOUTH WALES				
Armidale	849	850	1	0.1
Cessnock	811	792	-19	-2.3
Charlestown	1,704	1,738	34	2.0
Ettalong	878	923	45	5.1
Glen Innes	239	232	-7	-2.9
Gosford	1,373	1,417	44	3.2
Gunnedah	410	417	7	1.7
Inverell	657	649	-8	-1.2
Kempsey	1,005	1,012	7	0.7
Kurri Kurri	439	424	-15	-3.4
Lakehaven	1,442	1,462	20	1.4
Maitland	1,399	1,415	16	1.1
Mayfield	940	941	1	0.1
Muswellbrook	443	420	-23	-5.2
Nambucca Heads	879	852	-27	-3.1
Nelson Bay	492	521	29	5.9
Newcastle	1,185	1,135	-50	-4.2
Port Macquarie	1,602	1,581	-21	-1.3
Raymond Terrace	910	891	-19	-2.1
Singleton	253	252	-1	-0.4
Tamworth	1,582	1,556	-26	-1.6
Taree	1,647	1,627	-20	-1.2
The Entrance	1,185	1,207	22	1.9
Toronto	853	845	-8	-0.9
Tuncurry (Forster)	858	840	-18	-2.1
Wallsend	1,413	1,401	-12	-0.8
Wyong	697	688	-9	-1.3
Other (a)	22	24	2	%
Total	26,167	26,112	-55	-0.2

Note: For footnotes see end of table.

**TABLE 7 - JOB SEEKERS RECEIVING NEWSTART ALLOWANCE AND YOUTH ALLOWANCE
(OTHER) BY AREA SUPPORT OFFICE AND CUSTOMER SERVICE CENTRE**

<i>Area Support Office and Customer Service Centre</i>	May 2008	June 2008	Variation May - June	
			Number	Per cent
<i>SOUTH WEST NEW SOUTH WALES</i>				
Batemans Bay	847	836	-11	-1.3
Bathurst	900	896	-4	-0.4
Bega	711	709	-2	-0.3
Belconnen	640	642	2	0.3
Bowral	450	457	7	1.6
Braddon	652	655	3	0.5
Cooma	263	298	35	13.3
Cowra	466	483	17	3.6
Dubbo	1,871	1,911	40	2.1
Goulburn	723	731	8	1.1
Griffith	529	544	15	2.8
Gungahlin	66	73	7	%
Lanyon	33	26	-7	%
Leeton	338	341	3	0.9
Lithgow	574	559	-15	-2.6
Mudgee	676	658	-18	-2.7
Narooma	360	371	11	3.1
Nowra	1,911	1,925	14	0.7
Orange	1,001	1,003	2	0.2
Parkes	940	914	-26	-2.8
Queanbeyan	361	362	1	0.3
Tuggeranong	436	440	4	0.9
Tumut	265	290	25	9.4
Ulladulla	533	554	21	3.9
Wagga	1,401	1,362	-39	-2.8
Woden	337	346	9	2.7
Yass	82	89	7	%
Young	432	427	-5	-1.2
Other (a)	12	17	5	%
Total	17,810	17,919	109	0.6

Note: For footnotes see end of table.

**TABLE 7 - JOB SEEKERS RECEIVING NEWSTART ALLOWANCE AND YOUTH ALLOWANCE
(OTHER) BY AREA SUPPORT OFFICE AND CUSTOMER SERVICE CENTRE**

<i>Area Support Office and Customer Service Centre</i>	May 2008	June 2008	Variation May - June	
			Number	Per cent
<i>NORTH CENTRAL VICTORIA</i>				
Airport West	871	828	-43	-4.9
Albury	1,966	1,942	-24	-1.2
Box Hill	1,480	1,474	-6	-0.4
Broadmeadows	3,070	2,991	-79	-2.6
Camberwell	708	673	-35	-4.9
Darebin	2,834	2,771	-63	-2.2
Deniliquin	280	277	-3	-1.1
Echuca	458	459	1	0.2
Epping	1,443	1,398	-45	-3.1
Greensborough	1,302	1,277	-25	-1.9
Heidelberg	21	18	-3	%
Moreland	1,630	1,576	-54	-3.3
Newmarket	1,097	1,104	7	0.6
Seymour	542	527	-15	-2.8
Shepparton	1,844	1,836	-8	-0.4
South Melbourne	540	549	9	1.7
Sunbury	579	560	-19	-3.3
Wangaratta	1,409	1,396	-13	-0.9
Windsor	1,873	1,844	-29	-1.5
Yarra	1,413	1,364	-49	-3.5
Other (a)	16	21	5	%
Total	25,376	24,885	-491	-1.9

Note: For footnotes see end of table.

**TABLE 7 - JOB SEEKERS RECEIVING NEWSTART ALLOWANCE AND YOUTH ALLOWANCE
(OTHER) BY AREA SUPPORT OFFICE AND CUSTOMER SERVICE CENTRE**

<i>Area Support Office and Customer Service Centre</i>	May 2008	June 2008	Variation May - June	
			Number	Per cent
<i>SOUTH EAST VICTORIA</i>				
Bairnsdale	701	697	-4	-0.6
Belgrave	325	320	-5	-1.5
Cheltenham	1,159	1,144	-15	-1.3
Cranbourne	1,025	1,003	-22	-2.1
Dandenong	2,063	2,013	-50	-2.4
Fountain Gate	1,426	1,417	-9	-0.6
Frankston	1,972	1,935	-37	-1.9
Glen Waverley	766	729	-37	-4.8
Hastings	450	443	-7	-1.6
Lilydale	1,232	1,204	-28	-2.3
Mornington	386	361	-25	-6.5
Morwell	1,862	1,917	55	3.0
Oakleigh	1,218	1,169	-49	-4.0
Pakenham	438	438	0	0.0
Ringwood	1,180	1,112	-68	-5.8
Rosebud	801	821	20	2.5
Rowville	316	334	18	5.7
Sale	604	632	28	4.6
Springvale	1,525	1,502	-23	-1.5
Wantirna	932	926	-6	-0.6
Warragul	501	500	-1	-0.2
Wonthaggi	442	449	7	1.6
Other (a)	6	8	2	%
Total	21,330	21,074	-256	-1.2

Note: For footnotes see end of table.

**TABLE 7 - JOB SEEKERS RECEIVING NEWSTART ALLOWANCE AND YOUTH ALLOWANCE
(OTHER) BY AREA SUPPORT OFFICE AND CUSTOMER SERVICE CENTRE**

<i>Area Support Office and Customer Service Centre</i>	May 2008	June 2008	Variation May - June	
			Number	Per cent
WEST VICTORIA				
Ararat	230	217	-13	-5.7
Ballarat	2,172	2,133	-39	-1.8
Bendigo	2,110	2,090	-20	-0.9
Bendigo Central	335	343	8	2.4
Colac	389	404	15	3.9
Corio	1,462	1,461	-1	-0.1
Footscray	1,212	1,197	-15	-1.2
Geelong	2,433	2,415	-18	-0.7
Hamilton	360	371	11	3.1
Horsham	554	533	-21	-3.8
Maryborough	440	404	-36	-8.2
Melton	1,033	1,058	25	2.4
Mildura	1,623	1,638	15	0.9
Newport	880	849	-31	-3.5
Portland	321	317	-4	-1.2
Stawell	168	170	2	1.2
Sunshine	2,231	2,233	2	0.1
Swan Hill	748	740	-8	-1.1
Warrnambool	728	726	-2	-0.3
Watergardens	2,552	2,503	-49	-1.9
Werribee	2,150	2,138	-12	-0.6
Other (a)	9	14	5	%
Total	24,140	23,954	-186	-0.8

Note: For footnotes see end of table.

**TABLE 7 - JOB SEEKERS RECEIVING NEWSTART ALLOWANCE AND YOUTH ALLOWANCE
(OTHER) BY AREA SUPPORT OFFICE AND CUSTOMER SERVICE CENTRE**

<i>Area Support Office and Customer Service Centre</i>	May 2008	June 2008	Variation	
			May - June Number	Per cent
<i>CENTRAL & NORTHERN QUEENSLAND</i>				
Atherton	530	519	-11	-2.1
Ayr	334	314	-20	-6.0
Bamaga RASC (Nth Peninsula RASC)	33	31	-2	%
Biloela	131	117	-14	-10.7
Bowen	339	290	-49	-14.5
Cairns Families	9	10	1	%
Cairns Jobseekers	2,627	2,681	54	2.1
Cairns Remote (Indigenous ISC)	531	532	1	0.2
Cairns Seniors & Carers	4	5	1	%
Charters Towers	233	217	-16	-6.9
Edmonton	0	0	0	%
Emerald	232	226	-6	-2.6
Gladstone	705	705	0	0.0
Greenfields	8	6	-2	%
Ingham	276	267	-9	-3.3
Innisfail	474	482	8	1.7
Longreach	78	79	1	%
Mackay Jobseekers	1,096	1,018	-78	-7.1
Mackay Seniors & Carers	3	2	-1	%
Mareeba	447	453	6	1.3
Mossman	332	337	5	1.5
Mt Isa	686	664	-22	-3.2
Normanton	131	144	13	9.9
Palm Island	283	282	-1	-0.4
Rockhampton Families	1	1	0	%
Rockhampton Jobseekers	1,496	1,493	-3	-0.2
Rockhampton Seniors & Carers	1	2	1	%
Smithfield	0	0	0	%
Thursday Island	229	234	5	2.2
Townsville City	4	3	-1	%
Townsville Families	8	7	-1	%
Townsville Jobseekers	2,121	2,069	-52	-2.5
Townsville Seniors & Carers	5	5	0	%
Western Cape RASC	184	184	0	0.0
Whitsunday	280	297	17	6.1
Yarrabah RASC	287	293	6	2.1
Yeppoon	274	269	-5	-1.8
Other (a)	55	43	-12	%
Total	14,467	14,281	-186	-1.3

Note: For footnotes see end of the table.

**TABLE 7 - JOB SEEKERS RECEIVING NEWSTART ALLOWANCE AND YOUTH ALLOWANCE
(OTHER) BY AREA SUPPORT OFFICE AND CUSTOMER SERVICE CENTRE**

<i>Area Support Office and Customer Service Centre</i>	May 2008	June 2008	Variation May - June	
			Number	Per cent
<i>SOUTH & EAST QUEENSLAND</i>				
Bundaberg	2,425	2,414	-11	-0.5
Caboolture	1,509	1,482	-27	-1.8
Caboolture FCC and SC&R	0	0	0	%
Caloundra	721	742	21	2.9
Cherbourg	71	76	5	%
Chermside	699	672	-27	-3.9
Fortitude Valley	843	804	-39	-4.6
Gympie	1,012	1,001	-11	-1.1
Hervey Bay	1,064	1,081	17	1.6
Kawana Waters	334	337	3	0.9
Kingaroy	647	620	-27	-4.2
Kippa-Ring	960	924	-36	-3.8
Maroochydore	1,002	1,003	1	0.1
Maryborough	972	960	-12	-1.2
Mitchelton	637	635	-2	-0.3
Nambour	695	668	-27	-3.9
Noosa	638	622	-16	-2.5
Nundah	651	636	-15	-2.3
Strathpine	660	669	9	1.4
Toowong	530	502	-28	-5.3
Other (a)	21	18	-3	%
Total	16,091	15,866	-225	-1.4

Note: For footnotes see end of table.

**TABLE 7 - JOB SEEKERS RECEIVING NEWSTART ALLOWANCE AND YOUTH ALLOWANCE
(OTHER) BY AREA SUPPORT OFFICE AND CUSTOMER SERVICE CENTRE**

<i>Area Support Office and Customer Service Centre</i>	May 2008	June 2008	Variation May - June	
			Number	Per cent
<i>SOUTH & WEST QUEENSLAND</i>				
Beenleigh	1,181	1,195	14	1.2
Browns Plains	1,039	1,015	-24	-2.3
Capalaba	451	428	-23	-5.1
Charleville	168	164	-4	-2.4
Cleveland	564	558	-6	-1.1
Dalby	488	479	-9	-1.8
Goodna	770	779	9	1.2
Goondiwindi	262	268	6	2.3
Inala	961	925	-36	-3.7
Ipswich	1,658	1,612	-46	-2.8
Mt Gravatt	1,077	1,064	-13	-1.2
Roma	121	114	-7	-5.8
South Brisbane	592	560	-32	-5.4
Stanthorpe	324	343	19	5.9
Stones Corner	1,016	994	-22	-2.2
Toowoomba	1,759	1,767	8	0.5
Warwick	399	387	-12	-3.0
Woodridge	1,330	1,337	7	0.5
Wynnum	532	533	1	0.2
Other (a)	18	19	1	%
Total	14,710	14,541	-169	-1.1

Note: For footnotes see end of table.

**TABLE 7 - JOB SEEKERS RECEIVING NEWSTART ALLOWANCE AND YOUTH ALLOWANCE
(OTHER) BY AREA SUPPORT OFFICE AND CUSTOMER SERVICE CENTRE**

<i>Area Support Office and Customer Service Centre</i>	May 2008	June 2008	Variation May - June	
			Number	Per cent
<i>SOUTH AUSTRALIA</i>				
Berri	945	863	-82	-8.7
Broken Hill	774	749	-25	-3.2
Ceduna	265	252	-13	-4.9
Coober Pedy	157	161	4	2.5
Currie Street	475	471	-4	-0.8
Elizabeth	2,283	2,273	-10	-0.4
Enfield	1,251	1,248	-3	-0.2
Gawler	994	955	-39	-3.9
Glenelg	683	676	-7	-1.0
Kadina	631	611	-20	-3.2
Kilkenny	1,574	1,538	-36	-2.3
Marion	1,545	1,530	-15	-1.0
Modbury	1,415	1,403	-12	-0.8
Mt Barker	483	473	-10	-2.1
Mt Gambier	1,125	1,111	-14	-1.2
Murray Bridge	722	721	-1	-0.1
Noarlunga	2,286	2,287	1	0.0
Norwood	1,237	1,175	-62	-5.0
Port Adelaide	1,312	1,318	6	0.5
Port Augusta	677	682	5	0.7
Port Lincoln	484	491	7	1.4
Port Pirie	886	846	-40	-4.5
Salisbury	2,148	2,155	7	0.3
Torrensville	1,106	1,090	-16	-1.4
Victor Harbor	510	516	6	1.2
Whyalla	701	690	-11	-1.6
Other (a)	39	36	-3	%
Total	26,708	26,321	-387	-1.4

Note: For footnotes see end of table.

**TABLE 7 - JOB SEEKERS RECEIVING NEWSTART ALLOWANCE AND YOUTH ALLOWANCE
(OTHER) BY AREA SUPPORT OFFICE AND CUSTOMER SERVICE CENTRE**

<i>Area Support Office and Customer Service Centre</i>	May 2008	June 2008	Variation	
			May - June Number	Per cent
WEST AUSTRALIA				
Albany	707	745	38	5.4
Armadale	666	693	27	4.1
Bunbury	1,189	1,229	40	3.4
Busselton	229	244	15	6.6
Cannington	1,029	975	-54	-5.2
Carnarvon	300	289	-11	-3.7
Cocos Islands	48	47	-1	%
Collie	2	1	-1	%
Community Team Perth	98	104	6	%
Curtin on Campus SSC	9	9	0	%
Esperance	216	216	0	0.0
Fremantle	930	901	-29	-3.1
Fremantle SACC	1	3	2	%
Fremantle SSC	3	0	-3	%
Geraldton	1,075	1,103	28	2.6
Gosnells	728	745	17	2.3
Innaloo	929	893	-36	-3.9
Joondalup	953	970	17	1.8
Joondalup SACC	1	1	0	%
Joondalup SSC	6	0	-6	%
Kalgoorlie	553	543	-10	-1.8
Karratha	251	256	5	2.0
Laverton RASC	57	56	-1	%
Mandurah	867	867	0	0.0
Meekatharra RASC	127	131	4	3.1
Midland	1,435	1,475	40	2.8
Mirrabooka	1,194	1,163	-31	-2.6
Morley	1,187	1,183	-4	-0.3
Morley - Dewar Street	3	2	-1	%
Morley SSC	1	0	-1	%
Newman RASC	174	171	-3	-1.7
Northam	374	366	-8	-2.1
Rockingham	1,102	1,120	18	1.6
South Hedland	382	410	28	7.3
Spearwood	676	669	-7	-1.0
Victoria Park	1,105	1,130	25	2.3
Warwick Grove	468	482	14	3.0
Other (a)	48	40	-8	%
Total	19,123	19,232	109	0.6

Note: For footnotes see end of table.

**TABLE 7 - JOB SEEKERS RECEIVING NEWSTART ALLOWANCE AND YOUTH ALLOWANCE
(OTHER) BY AREA SUPPORT OFFICE AND CUSTOMER SERVICE CENTRE**

<i>Area Support Office and Customer Service Centre</i>	May 2008	June 2008	Variation May - June	
			Number	Per cent
TASMANIA				
Bridgewater	597	593	-4	-0.7
Burnie	1,155	1,136	-19	-1.6
Devonport	1,186	1,223	37	3.1
Glenorchy	1,589	1,590	1	0.1
Hobart	1,083	1,074	-9	-0.8
Huonville	419	411	-8	-1.9
Launceston	2,745	2,817	72	2.6
Mowbray	11	5	-6	%
Rosny Park	839	820	-19	-2.3
Sorell	414	402	-12	-2.9
Other (a)	45	42	-3	%
Total	10,083	10,113	30	0.3
NORTH AUSTRALIA				
Alice Springs	2,951	2,909	-42	-1.4
Borroloola RASC	39	37	-2	%
Broome	419	420	1	0.2
Casuarina	814	785	-29	-3.6
Derby	143	128	-15	-10.5
Fitzroy Crossing RASC	59	55	-4	%
Halls Creek RASC	197	208	11	5.6
Katherine	1,488	1,478	-10	-0.7
Knuckey Street	491	484	-7	-1.4
Kununurra	233	220	-13	-5.6
Maningrida	308	349	41	13.3
Nhulunbuy	759	759	0	0.0
Palmerston	746	736	-10	-1.3
Tangentyere	114	104	-10	-8.8
Tennant Creek	170	176	6	3.5
Tennant Creek Remote	93	91	-2	%
Tiwi Islands RASC	183	206	23	12.6
Top End Remote	1,089	913	-176	-16.2
Wadeye RASC	354	434	80	22.6
Yuendumu RASC	148	140	-8	-5.4
Other (a)	47	50	3	%
Total	10,845	10,682	-163	-1.5

Note: For footnotes see end of table.

**TABLE 7 - JOB SEEKERS RECEIVING NEWSTART ALLOWANCE AND YOUTH ALLOWANCE
(OTHER) BY AREA SUPPORT OFFICE AND CUSTOMER SERVICE CENTRE**

<i>Area Support Office and Customer Service Centre</i>	May 2008	June 2008	Variation May - June	
			Number	Per cent
PACIFIC CENTRAL				
Ballina	867	825	-42	-4.8
Beaudesert	280	296	16	5.7
Biggera Waters	1,100	1,159	59	5.4
Bourke	445	427	-18	-4.0
Brunswick Heads	483	505	22	4.6
Byron Bay	458	453	-5	-1.1
Casino	516	513	-3	-0.6
Coffs Harbour	2,219	2,149	-70	-3.2
Grafton	1,447	1,408	-39	-2.7
Lightning Ridge	182	181	-1	-0.5
Lismore	1,550	1,470	-80	-5.2
Maclean	0	0	0	%
Moree	474	463	-11	-2.3
Murwillumbah	485	482	-3	-0.6
Narrabri	326	325	-1	-0.3
Nerang	1,117	1,150	33	3.0
Palm Beach	1,491	1,503	12	0.8
Robina SCR	3	4	1	%
Southport	1,582	1,626	44	2.8
Tweed Heads	1,118	1,140	22	2.0
Walgett	232	231	-1	-0.4
Other (a)	30	35	5	%
Total	16,405	16,345	-60	-0.4
OTHER				
Centrelink Call Centres (b)	27	36	9	%
Not coded to an area	14	11	-3	%
Rounding adjustment (c)	3	-53	-56	%
AUSTRALIA	293,121	290,583	-2,538	-0.9

(a) Recipients not coded to a Customer Service Centre.

(b) Job seekers receiving NSA / YA (o) in Centrelink Call Centres which are not counted in the various Area Offices.

(c) Prior to the July 2007 publication, the rounding adjustment was included in the Fairfield CSC.

Notes:

- Where the Customer Service Centre has a population less than 100 in either of the reported months, the monthly percentage variation has been suppressed and replaced with the percentage symbol '%'. .

- Most of the figures in this publication are averages and have been rounded. As a result, discrepancies may occur between sums of component items and totals, and in the calculation of variations.

- From July 2007, new Area Support Office boundaries came into effect. A concordance between the new and old Area structures is provided in Table A in the July 2007 edition of this publication.

**TABLE 8 - JOB SEEKERS RECEIVING NEWSTART ALLOWANCE AND YOUTH ALLOWANCE (OTHER)
FORTNIGHTLY EARNINGS (%) AND SEX (a), FORTNIGHT ENDING 20 JUNE 2008**

<i>Fortnightly Earnings</i>	Short-term job seekers	Long-term job seekers	Total job seekers
MALES			
Did not earn an income	85.6	81.6	83.7
Earned an income	14.4	18.4	16.3
Amount earned			
\$0.01-\$62.00	0.6	0.8	0.7
\$62.01-\$142.00	2.0	2.5	2.3
\$142.01-\$236.00	2.3	3.0	2.7
\$236.01-\$316.00	1.8	2.3	2.0
Over \$316.00	7.7	9.7	8.7
Total	100.0	100.0	100.0
<i>Job seekers receiving NSA and YA (other)</i>	<i>90,472</i>	<i>85,881</i>	<i>176,353</i>
FEMALES			
Did not earn an income	75.6	70.7	72.9
Earned an income	24.4	29.3	27.1
Amount earned			
\$0.01-\$62.00	0.9	1.1	1.0
\$62.01-\$142.00	2.9	3.2	3.1
\$142.01-\$236.00	3.7	4.1	3.9
\$236.01-\$316.00	2.8	3.3	3.1
Over \$316.00	14.1	17.5	16.0
Total	100.0	100.0	100.0
<i>Job seekers receiving NSA and YA (other)</i>	<i>50,192</i>	<i>64,659</i>	<i>114,851</i>
PERSONS			
Did not earn an income	82.1	77.0	79.4
Earned an income	17.9	23.0	20.6
Amount earned			
\$0.01-\$62.00	0.7	1.0	0.8
\$62.01-\$142.00	2.3	2.8	2.6
\$142.01-\$236.00	2.8	3.5	3.2
\$236.01-\$316.00	2.1	2.7	2.4
Over \$316.00	10.0	13.1	11.6
Total	100.0	100.0	100.0
<i>Job seekers receiving NSA and YA (other)</i>	<i>140,664</i>	<i>150,540</i>	<i>291,204</i>

(a) Total figures in this table are different from Tables 2 to 7 because of different methodologies applied. Tables 2 to 7 are based on averages of weekly figures while this table is based on point in time data. See Explanatory Notes for further information.

EXPLANATORY NOTES

Introduction

This publication provides monthly statistical information on DEEWR labour market and related payments delivered by Centrelink. These Explanatory Notes provide details of the scope and methodology of the publication, as well as the policy changes which have affected the data since the publication was introduced in December 1995 by the then Department of Social Security.

Prior to December 1995, this publication was titled the *Monthly Job Search and Newstart Allowance Statistics*.

Scope

The primary focus of the publication is to provide information on unemployed people on Newstart Allowance and Youth Allowance, with a particular focus on the total number of job seekers. The number of people on Mature Age Allowance, Partner Allowance and Widow Allowance are also reported.

Methodology

Data in this publication relate to the average number of people who are both eligible (eg. meet 'unemployed' qualification) and entitled (eg. meet income and assets criteria) to receive a payment calculated over a reference month. Averages are calculated using figures collected for each Friday throughout the reference month.

Table 1 provides information on the total number of unemployed people on Newstart Allowance and Youth Allowance. The Youth Allowance population is split into Youth Allowance (full-time students), Youth Allowance (Australian Apprentices) and Youth Allowance (other) categories. Numbers of people on Mature Age Allowance, Partner Allowance and Widow Allowance are also provided.

Tables 2 and 3 provide a summary of the Newstart Allowance and Youth Allowance (other) populations and show the derivation of the respective job seeker populations (see the reference to job seekers in the Comparability of Data section of these Explanatory Notes). These populations are added together to derive the total number of job seekers. Tables 4 to 8 provide information on the total job seeker population.

The earnings data in Table 8 is derived using a different methodology from that of the other tables in the publication. Table 8 is based on the combined population of job seekers who are eligible for and entitled to receive Newstart Allowance or Youth Allowance (other) at the end of the second last week in the month. Thus, the data obtained from this table will not be directly comparable with those calculated using monthly averages in other tables.

Payment History

Youth Allowance

From 1 July 1998 Youth Allowance was introduced to provide income support to young people, including students, those looking for work, and those who are sick. Youth Allowees may be undertaking full-time study, full-time job search or a combination of approved activities. Some young people will be exempt from the activity test because of their personal circumstances, eg. illness, homelessness or major personal crisis. The Youth Allowance replaced:

- AUSTUDY for 16-24 year olds (and certain 15 year olds);
- Newstart Allowance for 16-20 year olds (and certain 15 year olds);
- Youth Training Allowance for 16-17 year olds (and certain 15 year olds);
- Sickness Allowance for 16-20 year olds (and certain 15 year olds); and
- More-than-minimum rate Family Payment for secondary students aged 16-18 not getting AUSTUDY.

Youth Allowance recipients are subject to the parental means test. Under previous arrangements, unemployed people aged 18 to 20 were not subject to the parental means test, unlike 18 to 20 year old students.

Special provisions applied for 18 to 20 year olds who were already on Newstart or Sickness Allowance at the date of announcement of Youth Allowance, and who remained on payment when Youth Allowance commenced on 1 July 1998. This group were able to remain on their existing payment and retain their existing benefits.

Youth Allowance had a significant downward effect on Newstart Allowance numbers from July 1998 and total job seeker numbers due to the parental means test.

Newstart Allowance

From 1 July 1998, Newstart Allowance for 16-20 year olds (and certain 15 year olds) was replaced by Youth Allowance. Young people aged 18 to 20 years old who were on Newstart or Sickness Allowance at the date of announcement of Youth Allowance and when Youth Allowance commenced on 1 July 1998, were able to remain on Newstart Allowance.

From 20 September 1996, Job Search Allowance and Newstart Allowance were combined into one payment - Newstart Allowance - which was payable to eligible recipients aged 18 years and over and to some people who were in receipt of Job Search Allowance and aged under 18 at 31 December 1994 (see Job Search Allowance).

Prior to 20 September 1996, Newstart Allowance was payable to eligible persons over 18 years who had been registered as unemployed with the Commonwealth Employment Service (CES) for 12 months or more.

<i>Job Search Allowance</i>	<p>From 20 September 1996, the payment was combined with Newstart Allowance to form one payment called Newstart Allowance. All Job Search Allowance recipients were transferred to Newstart Allowance.</p> <p>Prior to 20 September 1996, Job Search Allowance was payable to eligible persons who had been registered as unemployed with the CES for up to 12 months. It was also payable to eligible persons who were in receipt of Job Search Allowance and under 18 years of age at 31 December 1994. Persons aged 15 to 18 years who were not receiving Job Search Allowance prior to 1 January 1995 commenced on Youth Training Allowance.</p>
<i>Sickness Allowance</i>	<p>From 17 March 1996, persons in receipt of Newstart Allowance or Youth Training Allowance who became temporarily incapacitated no longer transferred to Sickness Allowance after 13 weeks. This change had the effect of increasing total Newstart Allowance/Youth Training Allowance figures but did not affect job seeker figures as those recipients who were incapacitated were excluded from the Newstart and Youth Training job seeker populations.</p> <p>Under current arrangements, these recipients remain on their existing payments but are exempt from the activity test for the duration of their medical certificates. People who become unemployed because of illness, and those who suffer a potential loss of income due to sickness, are paid Newstart Allowance because they are unemployed.</p> <p>Sickness Allowance for 16 to 20 year olds (and certain 15 year olds) was replaced by Youth Allowance, which was introduced on 1 July 1998 (see Youth Allowance).</p>
<i>Partner Allowance</i>	<p>From 20 September 2003, Partner Allowance was closed to new claimants. People on Partner Allowance before this date can remain on the allowance while they remain 'current', that is retain eligibility and entitlement for the allowance.</p> <p>From 1 July 1995 Partner Allowance has only been granted to persons who are dependent partners of pensioners and allowees and who were born before 1 July 1955, have no dependent children and have little or no recent workforce experience. Other dependent partners have to qualify for an income support payment in their own right, such as Newstart Allowance.</p> <p>Partner Allowance was introduced in September 1994, and was paid to partners of persons receiving Job Search Allowance, Newstart Allowance, Sickness Allowance or Special Benefit if certain eligibility criteria were satisfied.</p>
<i>Youth Training Allowance</i>	<p>Youth Training Allowance was replaced by Youth Allowance on 1 July 1998 (see Youth Allowance).</p> <p>From 1 January 1995, eligible persons aged under 18 years who were new entrants to the job search pool were paid Youth Training Allowance. (People who were in receipt of Job Search</p>

Allowance and aged under 18 years at 31 December 1994 continued to be paid Job Search Allowance. From 20 September 1996, those young persons still being paid Job Search Allowance were transferred to Newstart Allowance.)

Widow Allowance Widow Allowance, introduced on 1 January 1995, is payable to females aged 50 years or over who have become widowed, divorced or separated since turning 40 years (50 prior to 20 March 1997), if they meet a number of other criteria relating to current marital status and recent work experience. This has had a slight downwards effect on Newstart Allowance numbers from January 1995.

Mature Age Allowance From 20 September 2003, Mature Age Allowance was closed to new claimants. People on Mature Age Allowance before this date can remain on the allowance while they remain 'current', that is retain eligibility and entitlement for the allowance.

From 1 July 1996, the qualification conditions for Mature Age Allowance changed for new claimants. The requirement for 12 months prior receipt of income support was reduced to 9 months for people transferring from Newstart Allowance and removed entirely for people transferring from non-activity tested payments. The requirement to have been registered as unemployed for 9 months was replaced with a requirement to have no recent workforce experience. Reporting of these new claimants commenced from September 1996.

Mature Age Allowance was introduced on 24 March 1994, and was paid to long-term unemployed persons aged 60 years and over (but below Age Pension age) who had been receiving income support for 9 months or more and who were eligible for Newstart Allowance. The introduction of Mature Age Allowance had a downwards effect on Newstart Allowance numbers from April 1994 until September 2003.

Comparability of Data

There have been significant changes to the data presented in this publication due to a number of events. The main changes are:

- the method of counting recipients;
- the inclusion of some CDEP recipients in the total recipient numbers;
- the introduction of Youth Allowance in July 1998;
- the way 'job seeker' is defined; and
- the way duration is calculated.

People using this data to construct time series should note the following comments.

Definition of Recipient From July 2002, the Department of Family and Community Services (FaCS) introduced a new method to more accurately measure the number of people receiving labour market and related payments. For those receiving labour market and related payments, their eligibility and entitlement status is administered by a payment system called Newstart Common Platform System. Within this system recipients who are both eligible and entitled to receive a payment have a determination status of 'current'.

The new method therefore counts these 'current' recipients.

The old method of counting recipients was specified to include all paid recipients - those who received a payment within a given fortnight. As compiled, however, this count excluded, from mid 1998, recipients who received a 'one-off' payment. These can occur, for instance, when a normal payment is interrupted (eg. payment is cancelled and then restored within that pay period) and a portion of the normal payment is paid.

The time series in Tables 1 and 4 reflect the revised method, as does the remainder of the publication. Revised historical data for these time series from May 1998 to June 2002 can be found in the July 2002 publication.

From July 2003 FaCS introduced a more sustainable methodology for this revised recipient count. Due to limitations in available data sources in 2002, the revised recipient count had to be derived through a complicated process. This more sustainable methodology resulted in slight differences from the recipient numbers used in previous editions.

*Community Development
Employment Projects
(CDEP)* From 20 March 2000, eligible participants in CDEP started receiving CDEP participant supplement and other add-ons, such as rent assistance, as part of income support payments. This added a number of new recipients to those eligible for payments reported in this publication.

*Introduction of
Youth Allowance* The sum of the number of Newstart Allowees and Youth Training Allowees prior to July 1998 is broadly comparable with the sum of Newstart Allowees and Youth Allowees (other) after July 1998. There are two main problems in comparing these two series. The first is the exclusion of some 18 to 20 year old unemployed people due to the application of the Youth Allowance parental means test (see the Youth Allowance section under Payment History). The second is the inclusion of Sickness Allowees in the Youth Allowance (other) population.

There is greater comparability between total Newstart Allowance and Youth Training Allowance job seekers prior to July 1998 and total Newstart Allowance and Youth Allowance (other) job seekers after July 1998. This is because the Sickness Allowance group is excluded from the job seeker total. The problem, however, of the exclusion of some recipients through the application of the Youth Allowance parental means test still remains.

Job seekers Prior to July 1998, the job seeker category was defined by excluding all Newstart Allowees who did not receive a payment, recipients who were incapacitated, and those receiving a payment who were undertaking training. Some people who were not required to engage in job search were classified as job seekers, including people undertaking full-time voluntary work, people on jury duty and pregnant women around the time of the birth of their child.

From July 1998, the definition of job seekers has been placed on a sounder conceptual basis. It is now derived for Newstart Allowance and Youth Allowance (other) recipients by excluding all people who did not receive a payment due to their own and/or their partner's income, or where applicable, parental income, and all those known not to be required to search for work. People receiving Intensive Support Customised Assistance under Job Network arrangements are classified as job seekers although they may not always be undertaking job search. These people negotiate their activity agreement with their Job Network member.

The total number of job seekers (comparable to pre-July 1998 estimates) is calculated by adding together the number of job seekers in receipt of Newstart Allowance and Youth Allowance (other) - see the Explanatory Notes on Youth Allowance.

Duration

Following system changes in May 1998, duration has been defined according to the time a recipient spends on income support - short-term recipients are those who have been on income support for up to 12 months and long-term recipients are those who have been on income support for 12 months or more.

Prior to 1998, duration was defined according to the time a recipient was registered as unemployed - short-term recipients were people who were registered as unemployed for up to 12 months and long-term recipients were people who were registered for 12 months or more.

Closure of Mature Age and Partner Allowances

From 20 September 2003, Mature Age Allowance and Partner Allowance were closed to new claimants. People on these allowances before this date can remain on that allowance while they remain 'current', that is retain eligibility and entitlement for the allowance. The majority of people who would previously have claimed these payments will now claim Newstart Allowance.

Symbols

n.a. not available
.. not applicable

GLOSSARY

Activity test status	The activity that a Newstart Allowance or Youth Allowance (other) recipient has agreed to undertake in order to meet the activity test. To satisfy the activity test recipients must be actively seeking and willing to take up work or undertaking activities to improve their employment prospects.
Age	Age in years at time of data collection.
Area Support Office	A Centrelink office that supports a set of Customer Service Centres for a specified area. These are generally not confined to State boundaries.
Community Development Employment Projects (CDEP)	<p>The CDEP programme is administered by the Department of Families, Housing, Community Services and Indigenous Affairs (FaHCSIA) from December 2007 and was previously administered by the Department of Employment and Workplace Relations (DEWR). CDEP provides unemployed Indigenous people with activities designed to meet community needs and which develop participants' skills and improve their employability in order to assist them to move to employment outside the CDEP organisation. These activities can also lead to the development of business enterprises.</p> <p>The CDEP Participant Supplement (CPS) is payable to eligible CDEP participants. It can be paid fortnightly or as a 12 weekly payment.</p>
Customer Service Centre	A Customer Service Centre set within a particular region that provides FaHCSIA, DEEWR and other payments and related information and services to recipients. Customer Service Centres are managed by Area Support Offices.
Did not receive a payment	Persons who did not receive a payment due to their own income and/or that of their partner, or parents, where applicable. This group is often referred to as 'zero paid'.
Eligibility and payment status	Refer to the Methodology entry in the Explanatory Notes.
Fortnightly earnings	Amount of income earned, derived, or received by a person for the person's own use or benefit in the previous fortnight.
Incapacitated	A person on Newstart Allowance or Youth Allowance (other) who has an activity test status indicating they are temporarily ill or incapacitated. Refer to the entry for Sickness Allowance in the Explanatory Notes.
Job seekers	A person on Newstart Allowance or Youth Allowance (other) who would usually be engaged in jobsearch. See Explanatory Notes for definition and history.

Job Search Allowance (JSA)	Up to 20 September 1996, Job Search Allowance was payable to CES eligible persons who had been registered as unemployed with the CES for up to 12 months. From 20 September 1996, the payment was combined with Newstart Allowance to form one payment called Newstart Allowance. See Explanatory Notes for history.
Long-term recipients	Persons on Newstart Allowance or Youth Allowance who have been receiving income support for 12 months or more. Duration of long-term recipients can be reset to zero if they exited from payments for more than 13 weeks.
Mature Age Allowance (MAA)	From 20 September 2003, Mature Age Allowance was closed to new claimants. People on Mature Age Allowance before this date can remain on the allowance while they remain 'current', that is retain eligibility and entitlement for the allowance. Mature Age Allowance, a non-activity-tested payment, is payable to unemployed people aged 60 years and over (but below Age Pension age) with little or no recent workforce experience who meet certain requirements for previous receipt of income support. See Explanatory Notes for history.
Newstart Allowance (NSA)	Newstart Allowance is payable to eligible unemployed persons aged 21 years and over (but below Age Pension age) who satisfy the activity test. See Explanatory Notes for history.
Newstart Common Platform System (NCP)	The Newstart Common Platform System (NCP) was introduced in May 1998. The NCP administers all labour market and related payments. This includes primary payments such as Newstart Allowance, Youth Allowance, Mature Age Allowance, Widow Allowance and Partner Allowance. Other payments on the NCP include Special Benefit, Sickness Allowance, Exceptional Circumstances Relief, Farm Help and Austudy.
Partner Allowance (PA)	<p>From 20 September 2003, Partner Allowance was closed to new claimants. People on Partner Allowance before this date can remain on the allowance while they remain 'current', that is retain eligibility and entitlement for the allowance.</p> <p>Partner Allowance, a non-activity-tested payment, is payable to persons who are dependent partners of pensioners and allowees and who were born before 1 July 1955, have no dependent children and have little or no recent workforce experience. See Explanatory Notes for history.</p>
Short-term recipients	Persons on Newstart Allowance or Youth Allowance who have been receiving income support for less than 12 months. Duration of short-term recipients can be reset to zero if they exited from payments for more than 6 weeks.
States	States and Territories of Australia derived from the postcode of the recipient's residence as held on the Centrelink payment system.

Widow Allowance (WA)	<p>From 1 July 2005 Widow Allowance was closed to new claimants, unless the woman was born on or before 1 July 1955.</p> <p>Widow Allowance, a non-activity tested payment, is payable to females aged 50 years or over who have become widowed, divorced or separated since turning 40 years if they have little or no recent work experience and meet a number of other criteria relating to current marital status. See Explanatory Notes for history.</p>
Youth Training Allowance (YTA)	<p>From 1 January 1995 eligible persons aged under 18 years who were registered as unemployed with the CES were paid Youth Training Allowance. From 1 July 1998, Youth Training Allowance was replaced by Youth Allowance. See Explanatory Notes for history.</p>
Youth Allowance (YA)	<p>Youth Allowance is payable to eligible full-time students aged 16 to 25 years, and to eligible unemployed persons aged 16 to 20 years who satisfy the activity test. Note, there are certain exceptions for some 15 and 25 year olds. See Explanatory Notes for history.</p> <p>Youth Allowees may be undertaking full-time study, full-time job search or a combination of approved activities. Some young people will be exempt from the activity test because of their personal circumstances, eg. illness, homelessness or major personal crisis. See the Explanatory Notes for more information.</p>
Youth Allowance (other)	<p>Youth Allowance recipients who are not full-time students or full-time Australian Apprentices.</p>
Zero paid	<p>See 'Did not receive a payment'.</p>

APPENDIX

COMPARISONS BETWEEN DEEWR UNEMPLOYMENT LABOUR MARKET PAYMENT NUMBERS AND ABS LABOUR FORCE UNEMPLOYMENT STATISTICS

Official statistics	Official unemployment statistics are released by the Australian Bureau of Statistics (ABS). The ABS uses definitions recommended by the International Labour Office which have been accepted internationally as the most appropriate for the compilation of official statistics of unemployment.
ABS definition	The ABS unemployment statistics measure the number of persons who, for a particular reference period, did not undertake any paid work, were actively looking for work and were available to start work.
DEEWR Unemployment Labour Market Payment Statistics	The labour market payment statistics give the number of persons who are both eligible and entitled to receive Newstart Allowance or Youth Allowance (other). The criteria for receipt of these payments do not match those the ABS uses to determine whether a person is classed as unemployed or employed for statistical purposes.
Differences	Care should be taken when comparing the ABS labour force and DEEWR labour market payment data. There are a number of reasons why the two series cannot be directly compared.
<i>Duration</i>	<p>Both DEEWR and the ABS classify long-term duration as over 12 months, but use substantially different definitions of duration:</p> <p>DEEWR measures duration of income support. This includes not just time on unemployment benefits but time on any income support payment.</p> <p>The ABS measures length of time unemployed using their unemployment definition.</p> <p>DEEWR unemployed recipients can have breaks without payment for up to 25 weeks but still be classified as long-term income support recipients:</p> <ul style="list-style-type: none">• Recipients who do not receive a payment due to their earnings can have up to 12 weeks without a payment before they are automatically cancelled. This reduces disincentives to accept short-term work.• Long-term recipients can have another 13 weeks off payment after payment is cancelled and still keep their long-term status if they return to income support. This means they keep access to assistance such as the Employment Entry Payment and the higher payment rate for recipients over 60.

For the ABS statistics, any hours of work for a period as short as two weeks count as a break from unemployment and so are enough to reset a person's unemployment duration.

The difference between these two concepts, together with the fact that DEEWR recipients are able to have ongoing part-time work (see 'employment' below) mean that many unemployed recipients remain classified by DEEWR as long-term recipients when they would be classified as short-term unemployed under the ABS definition.

Seasonal adjustment The ABS produces a seasonally adjusted series. The DEEWR labour market payment numbers data are not seasonally adjusted.

Classification The ABS classifies a person as unemployed if he or she is aged 15 years and over, was not employed during the week before the interview, has actively looked for full-time or part-time work and is available to start work. From February 2004, people who had not actively looked for work because they were waiting to start a job within four weeks are also classified as unemployed.

The Newstart Allowance and Youth Allowance (other) series generally count people who are eligible for and entitled to receive a payment between the ages of 15 years and 64 years in the case of men and 15 to 63 years in the case of women.

Employment Newstart Allowance and Youth Allowance (other) recipients may be employed part-time, but within an income test limit; the ABS classifies a person as "employed" if, among other things, he or she has worked for one hour or more during the survey period.

Timing The timing of collections of the series are different:

- DEEWR reports monthly average numbers of people both eligible for and entitled to receive Newstart Allowance and Youth Allowance (other). These monthly averages are calculated using figures collected for each Friday throughout the reference month.
- ABS numbers are based on a sample interview survey of occupants of selected dwellings covering around 0.5% of the total Australian population. These persons are interviewed during the two weeks beginning the Monday between the 6th and 12th of each month and the information obtained is based on the week before the interview takes place.

Treatment of partners The ABS series includes unemployed persons whose spouse is working, irrespective of income, whereas Newstart Allowance and Youth Allowance (other) recipients are subject to an income and assets test for themselves and their spouse.

Pensioners The ABS series includes persons being paid a pension but looking for work (eg. sole parents in receipt of Parenting Payments looking for work).

<i>Non job seekers</i>	The overall Newstart Allowance and Youth Allowance (other) series includes persons who are not required to undertake jobsearch. These persons are separately identified in Tables 2 and 3, and have then been excluded in subsequent tables. These people may be undertaking training, the development of self-employment opportunities, full-time voluntary work or a combination of voluntary and part-time work which excludes them from jobsearch obligations. They may also be incapacitated or have another temporary exemption from jobsearch.
<i>Waiting periods</i>	The ABS series includes persons who are serving a waiting period before being granted Newstart Allowance or Youth Allowance (other), or whose allowance was deferred.
<i>Survey</i>	The ABS figures are derived from a Labour Force Survey which is a sample survey, whereas the DEEWR statistics are a complete count of those both eligible for and entitled to receive Newstart Allowance and Youth Allowance (other).

FOR MORE INFORMATION

Labour market information

Other statistics on recipients of labour market related payments are available on request.

In addition to Newstart and Youth Allowances, statistics are also available on Partner Allowance, Mature Age Allowance and Widow Allowance.

For publication distribution enquiries email:
MI.WORKINGAGE.PAYMENTS@centrelink.gov.au

Written correspondence concerning this publication or statistics on labour market related payments should be addressed to:

Director
Income Support Information Section
Department of Education, Employment and Workplace Relations
PO Box 9879
Canberra Mail Centre ACT 2601

or forwarded via facsimile to (02) 6275 3328.

Other recipient information

Statistics relating to other recipients are also available, including recipient numbers and characteristics for the various FaHCSIA pensions, benefits and family payments.

Other statistical outputs

The following statistical outputs are available on request:

Department of Families, Housing, Community Services and Indigenous Affairs (FaHCSIA)
Income Support Customers: a Statistical Overview
1996, 1997, 1998, 1999, 2000, 2001, 2002, 2003 and 2004.