

LABOUR MARKET
AND
RELATED PAYMENTS
a monthly profile

Note: The Figures contained in this publication are different from the unemployment figures produced by the Australian Bureau of Statistics (ABS), as the ABS and FaCS use different methodologies to count unemployed customers.

September 2004

Embargoed
Until 11.30 am, 22 October 2004

Annual Subscription - \$65.00

CONTENTS

	<i>Page</i>
Introduction	1
Statistical Highlights	2
Tables	
1. FaCS Labour Market Payments - Time Series	3
2. Newstart Allowees - Derivation of the Jobseeker Population	4
3. Youth Allowees (other) - Derivation of the Jobseeker Population	5
4. Jobseekers receiving Newstart Allowance and Youth Allowance (other) - Time Series	6
5. Jobseekers receiving Newstart Allowance and Youth Allowance (other) by State	7
6. Jobseekers receiving Newstart Allowance and Youth Allowance (other) by Age and Sex	8
7. Jobseekers receiving Newstart Allowance and Youth Allowance (other) by Area Support Office and Customer Service Centre	9
8. Jobseekers receiving Newstart Allowance and Youth Allowance (other) by Fortnightly Earnings and Sex	23
Explanatory Notes	24
Glossary	30
Appendix	33
For More Information	35

STATISTICAL HIGHLIGHTS - September 2004

Between September 2003 and September 2004:

Total Newstart Allowance (NSA) customers and Youth Allowance (other) (YA(O)) customers **decreased by 3.5%** overall from 607,783 to 586,586.

{ by 3.5% for NSA from 524,947 to 506,457 and

{ 3.3% for YA(O) from 82,836 to 80,129.

The number of jobseekers **decreased by 8.7%** overall from 434,370 to 396,377.

{ by 9.5% for NSA from 367,649 to 332,577 and

{ 4.4% for YA(O) customers from 66,721 to 63,800.

Long-term jobseekers decreased by 9.7% from 256,054 to 231,221.

Short-term jobseekers decreased by 7.4% from 178,316 to 165,156.

Long-term clients have been on income support for 12 months or more and can be off payment for up to 25 weeks before being reclassified as short-term. This differs significantly from the ABS definition of long-term unemployment (see Appendix).

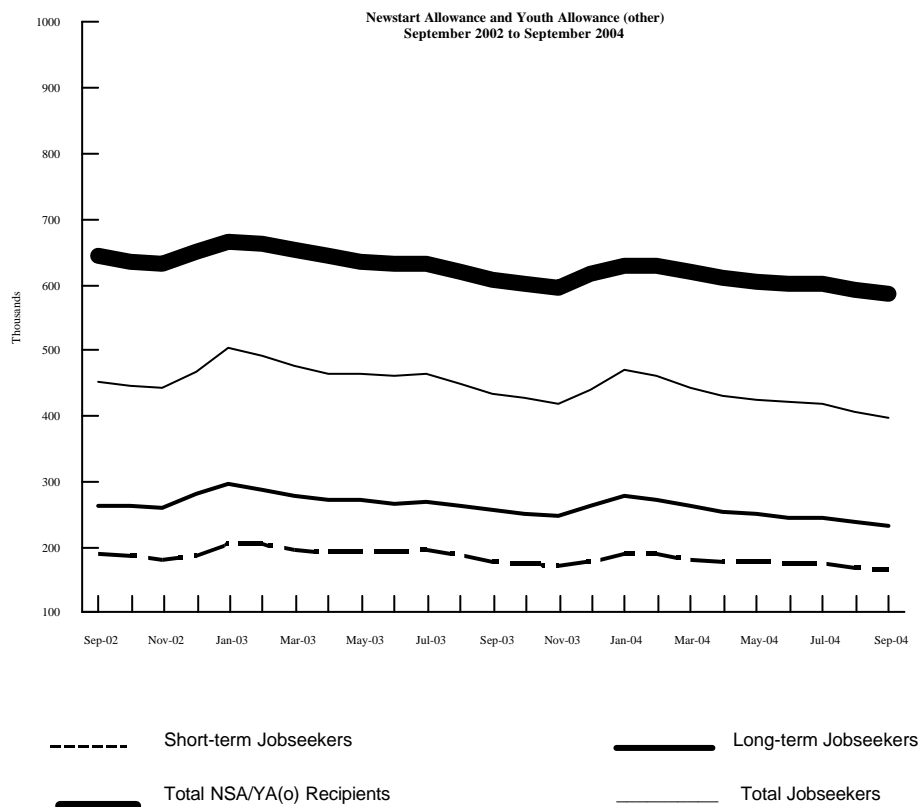


TABLE 1 - FaCS LABOUR MARKET PAYMENTS - TIME SERIES (a)

	Newstart Allowance		Youth Allowance		Mature Age Allowance	Partner Allowance	Widow Allowance
	Long-term (b)	Total	Full-time Students (c)	Other			
February 1994 (d)	472,785	977,796
September 2002	336,034	558,808	316,737	85,914	40,215	103,795	42,115
October 2002	335,004	551,899	309,343	83,560	40,102	103,735	42,298
November 2002	333,841	546,247	304,402	84,977	40,099	103,693	42,506
December 2002	339,563	552,637	262,659	96,808	40,131	103,743	42,680
January 2003	345,446	569,009	251,475	97,748	40,050	103,898	42,766
February 2003	343,677	570,613	260,961	93,043	40,282	104,054	42,938
March 2003	338,684	562,353	276,382	89,986	40,527	103,874	43,089
April 2003	333,806	554,505	289,342	89,501	40,682	103,787	43,206
May 2003	330,294	548,554	297,514	87,457	40,784	103,765	43,308
June 2003	327,544	545,685	304,491	87,574	41,372	104,080	43,550
July 2003	326,980	543,578	298,178	89,479	41,582	104,363	43,797
August 2003	324,559	535,399	305,220	85,340	41,882	105,173	44,188
September 2003	320,932	524,947	309,974	82,836	42,625	106,144	44,644
October 2003	318,997	520,317	306,946	80,666	42,140	105,973	45,014
November 2003	316,791	515,849	297,405	81,332	41,124	104,772	45,401
December 2003	321,781	523,107	256,770	92,671	40,117	103,495	45,760
January 2004	326,578	535,559	243,087	94,664	39,027	101,894	45,859
February 2004	326,028	539,098	255,944	91,562	37,835	99,912	45,892
March 2004	322,730	532,043	274,602	88,396	36,761	97,958	45,925
April 2004	318,836	524,504	286,058	85,607	35,507	95,817	45,840
May 2004	316,092	520,434	292,511	84,534	34,314	93,843	45,816
June 2004	313,883	517,895	296,560	84,841	33,310	92,058	45,781
July 2004	313,274	515,686	290,210	85,357	32,175	90,056	45,644
August 2004	311,282	511,799	297,594	81,939	31,046	88,133	45,544
September 2004	308,214	506,457	300,177	80,129	30,055	86,495	45,531
<i>Variation August 2004 - September 2004</i>							
Number	-3,068	-5,342	2,583	-1,810	-991	-1,638	-13
Per cent	-1.0	-1.0	0.9	-2.2	-3.2	-1.9	-0.0

(a) This table presents data using the revised method of measuring the number of people receiving FaCS labour market payments introduced in July 2002. Revised historical data back to May 1998 is in Table A. July 2002 publication.

(b) Long-term Newstart allowees are persons who have been receiving income support for 12 months or more.

(c) The number of full time students does not include those who have traded in their entire Youth Allowance entitlement for a loan under the Student Financial Supplement Loan Scheme. The Government announced on 24 April 2003 that no further loans will be issued under this Scheme from 1 January 2004. For further details, refer to the Explanatory Notes at the back of this publication.

(d) February 1994 data has been included for comparison purposes due to the peak in the number of persons receiving JSA/NSA at this point in time.

Note: Most of the figures in this publication are averages and have been rounded. As a result, discrepancies may occur between sums of component items and totals, and in the calculation of variations.

TABLE 2 - NEWSTART ALLOWEES - DERIVATION OF THE JOBSEEKER POPULATION

	August 2004	September			Variation August - September	
		Males	Females	Persons	Number	Per cent
Short-term NSA Customers	200,517	134,852	63,391	198,243	-2,274	-1.1
CPS recipients (a)	2,343	1,904	634	2,538	195	8.3
Did not receive a payment (b)	12,679	7,883	4,709	12,592	-87	-0.7
Received a payment	185,495	125,065	58,048	183,113	-2,382	-1.3
Incapacitated (c)	21,466	13,643	8,025	21,668	202	0.9
Training	9,760	6,201	3,823	10,024	264	2.7
Self-employment development (d)	518	407	212	619	101	19.5
Voluntary/part-time work (e)	2,671	1,358	1,423	2,781	110	4.1
Other/temporary exemptions (f)	13,225	8,081	5,423	13,504	279	2.1
Short-term NSA Jobseekers (g)	137,855	95,375	39,142	134,517	-3,338	-2.4
Long-term NSA Customers	311,282	204,245	103,969	308,214	-3,068	-1.0
CPS recipients (a)	7,275	5,202	2,093	7,295	20	0.3
Did not receive a payment (b)	12,211	7,621	4,950	12,571	360	2.9
Received a payment	291,796	191,422	96,926	288,348	-3,448	-1.2
Incapacitated (c)	30,712	18,973	11,985	30,958	246	0.8
Training	32,386	20,644	12,623	33,267	881	2.7
Self-employment development (d)	259	183	94	277	18	6.9
Voluntary/part-time work (e)	6,021	4,085	2,242	6,327	306	5.1
Other/temporary exemptions (f)	19,422	12,012	7,447	19,459	37	0.2
Long-term NSA Jobseekers (g)	202,996	135,525	62,535	198,060	-4,936	-2.4
All NSA Customers	511,799	339,097	167,360	506,457	-5,342	-1.0
CPS recipients (a)	9,618	7,106	2,727	9,833	215	2.2
Did not receive a payment (b)	24,890	15,504	9,659	25,163	273	1.1
Received a payment	477,291	316,487	154,974	471,461	-5,830	-1.2
Incapacitated (c)	52,178	32,616	20,010	52,626	448	0.9
Training (d)	42,146	26,845	16,446	43,291	1,145	2.7
Self-employment development (e)	777	590	306	896	119	15.3
Voluntary/part-time work (f)	8,692	5,443	3,665	9,108	416	4.8
Other/temporary exemptions (g)	32,647	20,093	12,870	32,963	316	1.0
All NSA Jobseekers (h)	340,851	230,900	101,677	332,577	-8,274	-2.4

(a) Persons with NSA eligibility who received CDEP Participant Supplement or add ons while participating in CDEP Projects.

(b) Persons who did not receive a payment due to their income and/or that of their partner. This group is often referred to as zero-paid.

(c) Activity code "incapacitated" relates to NSA recipients who have become temporarily ill or incapacitated.

(d) Includes customers in the Personal Support Programme (PSP), which helps people with multiple non-vocational barriers to employment and serves as a bridge between short-term crisis assistance and employment-related assistance.

(e) Those customers exempted from job search while they develop self-employment opportunities.

(f) Those customers undertaking approved full-time voluntary work or combinations of voluntary and part-time work who are not required to seek work.

(g) Includes other customers known not to have job search obligations. See 'Jobseekers' in Explanatory Notes.

(h) Those customers who received a payment and generally are required to search for work. These customers form the basis of the population group in Tables 2 - 7.

Notes:

- For information on short-term and long-term categories please refer to the Glossary.

- Most of the figures in this publication are averages and have been rounded. As a result, discrepancies may occur between sums of component items and totals, and in the calculation of variations.

TABLE 3 - YOUTH ALLOWEES (OTHER) - DERIVATION OF THE JOBSEEKER POPULATION

	August 2004	September			Variation August - September	
		Males	Females	Persons	Number	Per cent
Short-term YA (other) Customers	39,042	20,725	17,786	38,511	-531	-1.4
CPS recipients (a)	1,088	639	459	1,098	10	0.9
Did not receive a payment (b)	982	460	549	1,009	27	2.7
Received a payment	36,972	19,626	16,778	36,404	-568	-1.5
Part-time study & work (c)	4	2	2	4	0	0.0
Part-time study & other YA activities (d)	87	26	59	85	-2	-2.3
Incapacitated (e)	2,110	1,086	1,104	2,190	80	3.8
Training	1,377	817	556	1,373	-4	-0.3
Self-employment development (e)	7	9	6	15	8	114.3
Full-time voluntary work	11	4	6	10	-1	-9.1
Other non-jobseekers (e)	2,045	1,034	1,054	2,088	43	2.1
Short-term YA (other) Jobseekers (f)	31,331	16,648	13,991	30,639	-692	-2.2
Long-term YA (other) Customers	42,897	20,005	21,613	41,618	-1,279	-3.0
CPS recipients (a)	1,049	683	383	1,066	17	1.6
Did not receive a payment (b)	1,256	509	768	1,277	21	1.7
Received a payment	40,592	18,813	20,462	39,275	-1,317	-3.2
Part-time study & work (c)	8	0	8	8	0	0.0
Part-time study & other YA activities (d)	119	46	78	124	5	4.2
Incapacitated (e)	1,789	678	1,114	1,792	3	0.2
Training	2,412	1,223	1,216	2,439	27	1.1
Self-employment development (e)	11	7	5	12	1	9.1
Full-time voluntary work	12	3	15	18	6	50.0
Other non-jobseekers (e)	1,711	734	987	1,721	10	0.6
Long-term YA (other) Jobseekers (f)	34,530	16,122	17,039	33,161	-1,369	-4.0
All YA (other) Customers	81,939	40,730	39,399	80,129	-1,810	-2.2
CPS recipients (a)	2,137	1,322	842	2,164	27	1.3
Did not receive a payment (b)	2,238	969	1,317	2,286	48	2.1
Received a payment	77,564	38,439	37,240	75,679	-1,885	-2.4
Part-time study & work (c)	12	2	10	12	0	0.0
Part-time study & other YA activities (d)	206	72	137	209	3	1.5
Incapacitated (e)	3,899	1,764	2,218	3,982	83	2.1
Training (e)	3,789	2,040	1,772	3,812	23	0.6
Self-employment development (e)	18	16	11	27	9	50.0
Full-time voluntary work	23	7	21	28	5	21.7
Other non-jobseekers (e)	3,756	1,768	2,041	3,809	53	1.4
All YA (other) Jobseekers (f)	65,861	32,770	31,030	63,800	-2,061	-3.1

(a) Persons with YA eligibility who received CDEP Participant Supplement or add ons while participating in CDEP projects.

(b) Persons who did not receive a payment due to their own income and/or that of their partner or parents, where applicable. This group is often referred to as zero-paid.

(c) Those customers undertaking approved part-time study and work who are considered to have a full activity load and are not required to seek work.

(d) Those customers undertaking approved part-time study and other activities who are considered to have a full activity load and are not required to seek work.

(e) These categories are defined in the same way as in Table 2, except that those customers combining these activities with part-time study are classified under part-time study and other activities.

(f) Those customers who received a payment and generally are required to search for work. These customers form the basis of the population group in Tables 2 - 7.

Notes:

- For information on short-term and long-term categories please refer to the Glossary.

- Most of the figures in this publication are averages and have been rounded. As a result, discrepancies may occur between sums of component items and totals, and in the calculation of variations.

TABLE 4 - JOBSEEKERS RECEIVING NEWSTART ALLOWANCE AND YOUTH ALLOWANCE (OTHER)
TIME SERIES (a)

	Short-term	Long-term	Total
September 2002	189,762	263,085	452,847
October 2002	185,780	261,924	447,704
November 2002	181,762	260,685	442,447
December 2002	187,986	280,614	468,600
January 2003	206,675	297,166	503,841
February 2003	203,922	288,718	492,640
March 2003	196,529	279,421	475,950
April 2003	193,214	272,157	465,371
May 2003	194,400	271,109	465,509
June 2003	194,490	267,506	461,996
July 2003	195,487	270,316	465,803
August 2003	186,399	263,215	449,614
September 2003	178,316	256,054	434,370
October 2003	175,181	252,009	427,190
November 2003	170,868	247,695	418,563
December 2003	176,350	263,768	440,118
January 2004	191,981	278,371	470,352
February 2004	189,985	272,224	462,209
March 2004	180,650	262,525	443,175
April 2004	177,247	255,059	432,306
May 2004	176,366	249,705	426,071
June 2004	176,087	244,647	420,734
July 2004	175,344	244,846	420,190
August 2004	169,186	237,526	406,712
September 2004	165,156	231,221	396,377
<i>Variation August 2004 - September 2004</i>			
<i>Number</i>	-4,030	-6,305	-10,335
<i>Per cent</i>	-2.4	-2.7	-2.5

(a) This table presents data using the revised method of measuring the number of people receiving FaCS labour market payment introduced in July 2002. Revised historical data back to May 1998 is in Table B, July 2002 publication.

Notes:

- For information on short-term and long-term categories please refer to the Glossary.
- Most of the figures in this publication are averages and have been rounded. As a result, discrepancies may occur between sums of component items and totals, and in the calculation of variations.

**TABLE 5 - JOBSEEKERS RECEIVING NEWSTART ALLOWANCE AND YOUTH ALLOWANCE (OTHER)
BY STATE**

<i>State</i>	August 2004	September 2004	Variation	
			August - September Number	Per cent
SHORT-TERM JOBSEEKERS				
New South Wales	53,656	52,728	-928	-1.7
Victoria	41,126	40,414	-712	-1.7
Queensland	35,602	34,337	-1,265	-3.6
South Australia	12,890	12,609	-281	-2.2
Western Australia	17,477	16,779	-698	-4.0
Tasmania	4,819	4,769	-50	-1.0
Northern Territory	1,952	1,845	-107	-5.5
Australian Capital Territory	1,664	1,675	11	0.7
AUSTRALIA	169,186	165,156	-4,030	-2.4
LONG-TERM JOBSEEKERS				
New South Wales	77,376	75,679	-1,697	-2.2
Victoria	57,725	56,246	-1,479	-2.6
Queensland	44,689	43,014	-1,675	-3.7
South Australia	20,715	20,257	-458	-2.2
Western Australia	20,207	19,428	-779	-3.9
Tasmania	10,983	10,807	-176	-1.6
Northern Territory	3,574	3,540	-34	-1.0
Australian Capital Territory	2,257	2,250	-7	-0.3
AUSTRALIA	237,526	231,221	-6,305	-2.7
TOTAL JOBSEEKERS				
New South Wales	131,032	128,407	-2,625	-2.0
Victoria	98,851	96,660	-2,191	-2.2
Queensland	80,291	77,351	-2,940	-3.7
South Australia	33,605	32,866	-739	-2.2
Western Australia	37,684	36,207	-1,477	-3.9
Tasmania	15,802	15,576	-226	-1.4
Northern Territory	5,526	5,385	-141	-2.6
Australian Capital Territory	3,921	3,925	4	0.1
AUSTRALIA	406,712	396,377	-10,335	-2.5

Note: The majority of figures in this publication are averages, and have been rounded. As a result, discrepancies may occur between sums of component items and totals. The discrepancies may also affect the calculation of the variations in Table 2, 3, 5 and 7.

**TABLE 6 - JOBSEEKERS RECEIVING NEWSTART ALLOWANCE AND YOUTH ALLOWANCE (OTHER)
BY AGE AND SEX (SEPTEMBER 2004)**

Age	Short-term Jobseekers		Long-term Jobseekers		Total Jobseekers	
	Number	Per cent	Number	Per cent	Number	Per cent
MALES						
Less than 18 years	4,709	4.2	2,584	1.7	7,293	2.8
18 - 20 years	11,939	10.7	13,529	8.9	25,468	9.7
21 - 24 years	20,795	18.6	20,892	13.8	41,687	15.8
25 - 29 years	18,405	16.4	21,261	14.0	39,666	15.0
30 - 39 years	26,311	23.5	34,757	22.9	61,068	23.2
40 - 49 years	15,419	13.8	29,106	19.2	44,525	16.9
50 - 59 years	10,811	9.7	24,626	16.2	35,437	13.4
60 years and over	3,636	3.2	4,893	3.2	8,529	3.2
TOTAL	112,025	100.0	151,648	100.0	263,673	100.0
FEMALES						
Less than 18 years	4,693	8.8	2,924	3.7	7,617	5.7
18 - 20 years	9,298	17.5	14,105	17.7	23,403	17.6
21 - 24 years	11,090	20.9	13,294	16.7	24,384	18.4
25 - 29 years	6,397	12.0	8,407	10.6	14,804	11.2
30 - 39 years	6,413	12.1	10,970	13.8	17,383	13.1
40 - 49 years	6,995	13.2	17,690	22.2	24,685	18.6
50 - 59 years	7,025	13.2	11,258	14.1	18,283	13.8
60 years and over	1,220	2.3	925	1.2	2,145	1.6
TOTAL	53,131	100.0	79,573	100.0	132,704	100.0
PERSONS						
Less than 18 years	9,402	5.7	5,508	2.4	14,910	3.8
18 - 20 years	21,237	12.9	27,634	12.0	48,871	12.3
21 - 24 years	31,885	19.3	34,186	14.8	66,071	16.7
25 - 29 years	24,802	15.0	29,668	12.8	54,470	13.7
30 - 39 years	32,724	19.8	45,727	19.8	78,451	19.8
40 - 49 years	22,414	13.6	46,796	20.2	69,210	17.5
50 - 59 years	17,836	10.8	35,884	15.5	53,720	13.6
60 years and over	4,856	2.9	5,818	2.5	10,674	2.7
TOTAL	165,156	100.0	231,221	100.0	396,377	100.0

**TABLE 7 - JOBSEEKERS RECEIVING NEWSTART ALLOWANCE AND YOUTH ALLOWANCE
(OTHER) BY AREA SUPPORT OFFICE AND CUSTOMER SERVICE CENTRE**

<i>Area Support Office and Customer Service Centre</i>	August 2004	September 2004	Variation	
			August - September Number	Per cent
<i>EAST COAST (SYDNEY)</i>				
Bondi Junction	1,368	1,284	-84	-6.1
Chatswood	1,241	1,185	-56	-4.5
Darlinghurst	1,769	1,739	-30	-1.7
Darlinghurst YSU	15	17	2	%
Hornsby	959	900	-59	-6.2
Leichhardt	1,554	1,499	-55	-3.5
Maroubra	1,263	1,176	-87	-6.9
Marrickville	1,541	1,515	-26	-1.7
Northern Beaches	1,309	1,219	-90	-6.9
Sydney Central YSU	0	2	2	%
Other (a)	54	46	-8	%
<i>Total</i>	11,073	10,582	-491	-4.4
<i>EAST COAST (WOLLONGONG)</i>				
Caringbah	1,398	1,412	14	1.0
Corrimal	1,387	1,367	-20	-1.4
Dapto	1,189	1,161	-28	-2.4
Hurstville	1,312	1,278	-34	-2.6
Nowra	1,954	1,946	-8	-0.4
Redfern	1,399	1,396	-3	-0.2
Rockdale	1,451	1,439	-12	-0.8
Shellharbour	1,674	1,671	-3	-0.2
Sutherland	40	39	-1	%
Ulladulla	526	539	13	2.5
Wollongong	1,855	1,882	27	1.5
Other (a)	28	24	-4	%
<i>Total</i>	14,213	14,154	-59	-0.4

Note: For footnotes see end of table.

**TABLE 7 - JOBSSEKERS RECEIVING NEWSTART ALLOWANCE AND YOUTH ALLOWANCE
(OTHER) BY AREA SUPPORT OFFICE AND CUSTOMER SERVICE CENTRE**

<i>Area Support Office and Customer Service Centre</i>	August 2004	September 2004	Variation	
			August - September Number	Per cent
<i>HUNTER NSW</i>				
Armidale	1,246	1,192	-54	-4.3
Cessnock	893	883	-10	-1.1
Charlestown	2,890	2,838	-52	-1.8
Ettalong	1,120	1,089	-31	-2.8
Forster	867	878	11	1.3
Gosford*	2,055	1,954	-101	-4.9
Gosford NSS*	1	0	-1	%
Gunnedah	478	454	-24	-5.0
Inverell	657	650	-7	-1.1
Kempsey	1,350	1,305	-45	-3.3
Kurri Kurri	576	564	-12	-2.1
Lakehaven	1,700	1,703	3	0.2
Maitland	1,796	1,767	-29	-1.6
Mayfield	1,290	1,283	-7	-0.5
Muswellbrook	666	640	-26	-3.9
Nambucca Heads	1,191	1,163	-28	-2.4
Nelson Bay	607	592	-15	-2.5
Newcastle	1,933	1,895	-38	-2.0
Port Macquarie	1,725	1,732	7	0.4
Raymond Terrace	993	977	-16	-1.6
Singleton	323	318	-5	-1.5
Tamworth	1,778	1,812	34	1.9
Taree	1,772	1,771	-1	-0.1
The Entrance	1,179	1,134	-45	-3.8
Toronto	1,256	1,199	-57	-4.5
Tuggerah	0	0	0	%
Wallsend	1,926	1,874	-52	-2.7
Wyong	611	601	-10	-1.6
Other (a)	46	49	3	%
<i>Total</i>	32,925	32,317	-608	-1.8

Note: For footnotes see end of table.

*12/05/2003 customers transferred from Gosford NSS to Gosford CSC.

**TABLE 7 - JOBSEEKERS RECEIVING NEWSTART ALLOWANCE AND YOUTH ALLOWANCE
(OTHER) BY AREA SUPPORT OFFICE AND CUSTOMER SERVICE CENTRE**

<i>Area Support Office and Customer Service Centre</i>	August 2004	September 2004	Variation	
			August - September Number	Per cent
<i>SOUTH METROPOLITAN NSW</i>				
Ashfield	22	19	-3	%
Bankstown	3,720	3,603	-117	-3.1
Cabramatta	2,199	2,159	-40	-1.8
Camden	369	372	3	0.8
Campbelltown	2,479	2,383	-96	-3.9
Campsie	1,920	1,843	-77	-4.0
Fairfield	3,933	3,852	-81	-2.1
Ingleburn	998	1,015	17	1.7
Lakemba	13	14	1	%
Liverpool	3,802	3,715	-87	-2.3
Revesby	5	4	-1	%
Strathfield	1,478	1,430	-48	-3.2
Other (a)	4	5	1	%
<i>Total</i>	20,942	20,414	-528	-2.5
<i>WEST NSW</i>				
Auburn	2,019	2,002	-17	-0.8
Baulkham Hills	586	579	-7	-1.2
Blacktown	2,900	2,861	-39	-1.3
Hawkesbury	816	822	6	0.7
Katoomba	636	643	7	1.1
Lithgow	751	740	-11	-1.5
Merrylands	1,695	1,663	-32	-1.9
Mt Druitt	2,277	2,285	8	0.4
Mudgee	658	690	32	4.9
Parramatta	2,013	1,948	-65	-3.2
Penrith	1,642	1,570	-72	-4.4
Ryde	1,049	1,012	-37	-3.5
Springwood	406	372	-34	-8.4
St Marys	1,638	1,573	-65	-4.0
Other (a)	14	13	-1	%
<i>Total</i>	19,100	18,773	-327	-1.7

Note: For footnotes see end of table.

**TABLE 7 - JOBSEEKERS RECEIVING NEWSTART ALLOWANCE AND YOUTH ALLOWANCE
(OTHER) BY AREA SUPPORT OFFICE AND CUSTOMER SERVICE CENTRE**

<i>Area Support Office and Customer Service Centre</i>	August 2004	September 2004	Variation	
			August - September Number	Per cent
<i>SOUTH WEST NSW</i>				
Albury	2,224	2,180	-44	-2.0
Batemans Bay	774	728	-46	-5.9
Bathurst	912	922	10	1.1
Bega	768	760	-8	-1.0
Belconnen	1,223	1,224	1	0.1
Bourke	444	442	-2	-0.5
Bowral	456	447	-9	-2.0
Braddon	1,085	1,044	-41	-3.8
Cooma	379	338	-41	-10.8
Cowra	463	473	10	2.2
Deniliquin	343	344	1	0.3
Dubbo	1,907	1,892	-15	-0.8
Goulburn	732	735	3	0.4
Griffith	592	572	-20	-3.4
Gungahlin	141	135	-6	-4.3
Lanyon	55	58	3	%
Leeton	361	343	-18	-5.0
Narooma	422	410	-12	-2.8
Orange	1,093	1,048	-45	-4.1
Parkes	1,037	1,010	-27	-2.6
Queanbeyan	612	619	7	1.1
Tuggeranong	780	807	27	3.5
Tumut	329	325	-4	-1.2
Wagga	1,730	1,715	-15	-0.9
Woden	667	684	17	2.5
Yass	113	108	-5	-4.4
Young	436	431	-5	-1.1
Other (a)	2	5	3	%
<i>Total</i>	20,080	19,799	-281	-1.4

Note: For footnotes see end of table.

**TABLE 7 - JOBSSEKERS RECEIVING NEWSTART ALLOWANCE AND YOUTH ALLOWANCE
(OTHER) BY AREA SUPPORT OFFICE AND CUSTOMER SERVICE CENTRE**

<i>Area Support Office and Customer Service Centre</i>	August 2004	September 2004	Variation	
			August - September Number	Per cent
<i>NORTH-CENTRAL VICTORIA</i>				
Box Hill	1,777	1,775	-2	-0.1
Broadmeadows	3,785	3,633	-152	-4.0
Darebin	3,605	3,471	-134	-3.7
Echuca	635	611	-24	-3.8
Epping	2,325	2,249	-76	-3.3
Fitzroy	1,816	1,843	27	1.5
Greensborough	1,379	1,350	-29	-2.1
Heidelberg	1,051	1,027	-24	-2.3
Lilydale	1,554	1,446	-108	-6.9
Moreland	3,117	3,090	-27	-0.9
Newmarket	1,919	1,820	-99	-5.2
Richmond	1,071	1,026	-45	-4.2
Ringwood	1,916	1,837	-79	-4.1
Seymour	637	657	20	3.1
Shepparton	2,574	2,566	-8	-0.3
Sth Melbourne	1,047	1,033	-14	-1.3
Wangaratta	1,781	1,805	24	1.3
Windsor (VIC)	3,452	3,371	-81	-2.3
Other (a)	39	35	-4	%
<i>Total</i>	35,480	34,645	-835	-2.4

Note: For footnotes see end of table.

**TABLE 7 - JOBSSEKERS RECEIVING NEWSTART ALLOWANCE AND YOUTH ALLOWANCE
(OTHER) BY AREA SUPPORT OFFICE AND CUSTOMER SERVICE CENTRE**

<i>Area Support Office and Customer Service Centre</i>	August 2004	September 2004	Variation	
			August - September Number	Per cent
<i>SOUTH-EAST VICTORIA</i>				
Bairnsdale	973	959	-14	-1.4
Belgrave*	590	566	-24	-4.1
Camberwell	1,070	1,068	-2	-0.2
Cheltenham	2,171	2,096	-75	-3.5
Cranbourne	1,220	1,205	-15	-1.2
Dandenong	2,684	2,577	-107	-4.0
Fountain Gate	2,051	1,973	-78	-3.8
Frankston	3,453	3,296	-157	-4.5
Glen Waverley	1,277	1,248	-29	-2.3
Leongatha	2	2	0	%
Mornington	621	618	-3	-0.5
Morwell	2,893	2,804	-89	-3.1
Oakleigh	2,113	2,068	-45	-2.1
Rosebud	1,060	1,027	-33	-3.1
Rowville	492	469	-23	-4.7
Sale	1,058	1,018	-40	-3.8
Springvale	2,601	2,551	-50	-1.9
Wantirna*	1,444	1,373	-71	-4.9
Warragul	447	442	-5	-1.1
Wonthaggi	645	624	-21	-3.3
Other (a)	12	15	3	%
<i>Total</i>	28,877	27,999	-878	-3.0

Note: For footnotes see end of table.

* Belgrave and Wantirna CSCs were previously included under Knox. Knox no longer exists and has been removed from list.

Belgrave and Wantirna CSCs are shown independently.

**TABLE 7 - JOBSSEKERS RECEIVING NEWSTART ALLOWANCE AND YOUTH ALLOWANCE
(OTHER) BY AREA SUPPORT OFFICE AND CUSTOMER SERVICE CENTRE**

<i>Area Support Office and Customer Service Centre</i>	August 2004	September 2004	Variation	
			August - September Number	Per cent
<i>WEST VICTORIA</i>				
Ararat	300	293	-7	-2.3
Ballarat	3,151	3,110	-41	-1.3
Bendigo	3,403	3,414	11	0.3
Colac	537	516	-21	-3.9
Corio	1,871	1,856	-15	-0.8
Essendon (Airport West)	1,461	1,466	5	0.3
Footscray	2,076	1,988	-88	-4.2
Geelong	3,473	3,436	-37	-1.1
Hamilton	383	369	-14	-3.7
Horsham	755	741	-14	-1.9
Maryborough (VIC)	551	550	-1	-0.2
Melton	1,182	1,175	-7	-0.6
Mildura	1,799	1,757	-42	-2.3
Newport	1,199	1,177	-22	-1.8
Portland	536	512	-24	-4.5
Stawell	161	157	-4	-2.5
Sunbury	757	738	-19	-2.5
Sunshine	3,019	2,982	-37	-1.2
Swan Hill	873	837	-36	-4.1
Warrnambool	986	984	-2	-0.2
Watergardens	3,498	3,439	-59	-1.7
Werribee	2,403	2,376	-27	-1.1
Other (a)	11	13	2	%
<i>Total</i>	34,385	33,886	-499	-1.5

Note: For footnotes see end of table.

**TABLE 7 - JOBSSEKERS RECEIVING NEWSTART ALLOWANCE AND YOUTH ALLOWANCE
(OTHER) BY AREA SUPPORT OFFICE AND CUSTOMER SERVICE CENTRE**

<i>Area Support Office and Customer Service Centre</i>	August 2004	September 2004	Variation	
			August - September Number	Per cent
<i>BRISBANE</i>				
Annerley	1,037	1,008	-29	-2.8
Bundaberg	2,865	2,745	-120	-4.2
Caboolture	2,443	2,348	-95	-3.9
Caloundra	1,358	1,275	-83	-6.1
Capalaba	854	808	-46	-5.4
Chermside	1,188	1,121	-67	-5.6
Cleveland	847	796	-51	-6.0
Fortitude Valley	1,842	1,820	-22	-1.2
Gympie	1,307	1,264	-43	-3.3
Hervey Bay	1,303	1,237	-66	-5.1
Kawana Waters	619	589	-30	-4.8
Kingaroy	701	686	-15	-2.1
Maroochydore	1,760	1,688	-72	-4.1
Maryborough	1,329	1,312	-17	-1.3
Mitchelton	1,204	1,121	-83	-6.9
Mt Gravatt	1,986	1,902	-84	-4.2
Nambour	1,273	1,186	-87	-6.8
Noosa	1,506	1,412	-94	-6.2
Nundah	1,293	1,276	-17	-1.3
Redcliffe	1,707	1,624	-83	-4.9
Stones Corner	1,972	1,935	-37	-1.9
Strathpine	1,203	1,085	-118	-9.8
Toowong	1,417	1,362	-55	-3.9
Wynnum	1,007	1,005	-2	-0.2
Other (a)	0	0	0	%
<i>Total</i>	34,021	32,605	-1,416	-4.2

Note: For footnotes see end of table.

**TABLE 7 - JOBSEEKERS RECEIVING NEWSTART ALLOWANCE AND YOUTH ALLOWANCE
(OTHER) BY AREA SUPPORT OFFICE AND CUSTOMER SERVICE CENTRE**

<i>Area Support Office and Customer Service Centre</i>	August 2004	September 2004	Variation	
			August - September Number	Per cent
<i>CENTRAL & NORTHERN QUEENSLAND</i>				
Atherton	815	811	-4	-0.5
Ayr	402	392	-10	-2.5
Biloela	222	220	-2	-0.9
Bowen	475	446	-29	-6.1
Cairns EMS (3)	3,251	3,088	-163	-5.0
Cairns FAO (3)	132	123	-9	-6.8
Cairns Ret (3)	4	5	1	%
Charters Towers	368	363	-5	-1.4
Edmonton	113	114	1	0.9
Emerald	302	405	103	34.1
Gladstone	1,107	1,072	-35	-3.2
Greenfields	5	5	0	%
Indigenous ISC (2)	562	483	-79	-14.1
Ingham	266	253	-13	-4.9
Innisfail	795	767	-28	-3.5
Mackay	2,408	2,312	-96	-4.0
Mareeba	480	477	-3	-0.6
Mossman	245	229	-16	-6.5
Mt Isa	929	921	-8	-0.9
Normanton	193	189	-4	-2.1
Palm Island (2)	255	252	-3	-1.2
Rockhampton	2,923	2,760	-163	-5.6
Smithfield	319	324	5	1.6
Thursday Is	255	258	3	1.2
Townsville City (1)	58	55	-3	%
Townsville Employment Services (1)	3,487	3,334	-153	-4.4
Townsville FAO (1)	16	15	-1	%
Townsville Retirement (1)	8	7	-1	%
Whitsunday	531	481	-50	-9.4
Yarrabah RASC (2)	93	99	6	%
Yeppoon	576	549	-27	-4.7
Other (a)	90	163	73	%
<i>Total</i>	21,685	20,972	-713	-3.3

Note: For footnotes see end of the table.

1. As of November 2003 the above offices have changed names. Townsville Employment Services was previously known as Aitkenvale (Centrepoint), Townsville FAO was previously known as Ross River (Elizabeth St) and Townsville Retirement was previously known as Willows. Townsville FAO was previously known as Ross River (Elizabeth St) and Townsville Retirement was previously known as Willows.

Unemployment customers are being transferred from Townsville Retirement to Townsville Employment Services. Townsville City is now an access point only and customers are being transferred within the Townsville area to the appropriate CSC's.

2. As of 29 March 2004 Cairns YAC is now known as Yarrabah RASC, Cairns Remote is now known as Indigenous ISC and Townsville YSC, is now known as Palm Island. Customers are being transferred from these sites to better service the needs of Indigenous and rural customers.

3. As of 28 May 2004, Cairns is now known as Cairns EMS, Earville is now known as Cairns FAO and Cairns Grafton St is now known as Cairns Ret.

**TABLE 7 - JOBSEEKERS RECEIVING NEWSTART ALLOWANCE AND YOUTH ALLOWANCE
(OTHER) BY AREA SUPPORT OFFICE AND CUSTOMER SERVICE CENTRE**

<i>Area Support Office and Customer Service Centre</i>	August 2004	September 2004	Variation	
			August - September Number	Per cent
<i>SOUTH AUSTRALIA</i>				
Berri	989	956	-33	-3.3
Broken Hill	1,005	971	-34	-3.4
Ceduna	187	190	3	1.6
Cooper Pedy	168	172	4	2.4
Currie St (Adelaide)	1,096	1,062	-34	-3.1
Currie St (Adelaide) SAC	0	0	0	%
Edwardstown	2,409	2,350	-59	-2.4
Elizabeth	2,596	2,525	-71	-2.7
Enfield	1,685	1,661	-24	-1.4
Gawler	1,051	1,030	-21	-2.0
Glenelg	1,088	1,020	-68	-6.3
Kadina	671	650	-21	-3.1
Kilkenny	1,977	1,900	-77	-3.9
Modbury	1,949	1,901	-48	-2.5
Mt Barker	670	631	-39	-5.8
Mt Gambier	1,318	1,294	-24	-1.8
Murray Bridge	874	857	-17	-1.9
Noarlunga	2,882	2,818	-64	-2.2
Norwood	1,507	1,467	-40	-2.7
Parkside	663	627	-36	-5.4
Port Adelaide	1,717	1,687	-30	-1.7
Port Augusta	749	716	-33	-4.4
Port Lincoln	659	665	6	0.9
Port Pirie	1,119	1,096	-23	-2.1
Salisbury	2,648	2,614	-34	-1.3
Torrensville	1,588	1,581	-7	-0.4
Victor Harbor	581	589	8	1.4
Whyalla	930	967	37	4.0
Other (a)	16	22	6	%
<i>Total</i>	34,792	34,019	-773	-2.2

Note: For footnotes see end of table.

**TABLE 7 - JOBSSEKERS RECEIVING NEWSTART ALLOWANCE AND YOUTH ALLOWANCE
(OTHER) BY AREA SUPPORT OFFICE AND CUSTOMER SERVICE CENTRE**

<i>Area Support Office and Customer Service Centre</i>	August 2004	September 2004	Variation	
			August - September Number	Per cent
<i>WESTERN AUSTRALIA</i>				
Albany	1,406	1,323	-83	-5.9
Armadale	1,320	1,276	-44	-3.3
Bunbury	2,496	2,371	-125	-5.0
Cannington	2,012	1,896	-116	-5.8
Carnarvon	257	263	6	2.3
Centrelink City*	1	1	0	%
Christmas Island	31	29	-2	%
Cocos Island	34	32	-2	%
Collie	0	1	1	%
Esperance	375	355	-20	-5.3
Fremantle	2,107	2,025	-82	-3.9
Geraldton	1,715	1,699	-16	-0.9
Gosnells	1,344	1,287	-57	-4.2
Innaloo	2,407	2,321	-86	-3.6
Joondalup	1,926	1,829	-97	-5.0
Kalgoorlie	715	706	-9	-1.3
Karratha	289	289	0	0.0
Kwinana*	22	12	-10	%
Mandurah	1,734	1,650	-84	-4.8
Midland	2,253	2,167	-86	-3.8
Mirrabooka	2,364	2,291	-73	-3.1
Morley	2,930	2,816	-114	-3.9
Northam	584	558	-26	-4.5
Rockingham	2,228	2,158	-70	-3.1
South Hedland	306	307	1	0.3
Spearwood	1,457	1,433	-24	-1.6
Victoria Park	2,907	2,788	-119	-4.1
Warwick Grove	1,442	1,334	-108	-7.5
Other (a)	525	468	-57	-10.9
<i>Total</i>	37,187	35,685	-1,502	-4.0

Note: For footnotes see end of table.

*As of 30 May 2003 Kwinana became a sub office of Rockingham.

*From 30 June 2003 processes at Centerlink City, formerly known as Milligan Street, became limited to forms lodgement and quick general enquiries only.

**TABLE 7 - JOBSSEKERS RECEIVING NEWSTART ALLOWANCE AND YOUTH ALLOWANCE
(OTHER) BY AREA SUPPORT OFFICE AND CUSTOMER SERVICE CENTRE**

<i>Area Support Office and Customer Service Centre</i>	August 2004	September 2004	Variation	
			August - September Number	Per cent
<i>TASMANIA</i>				
Bridgewater	952	927	-25	-2.6
Burnie	1,891	1,870	-21	-1.1
Devonport	2,127	2,084	-43	-2.0
Glenorchy	1,926	1,889	-37	-1.9
Hobart	2,182	2,146	-36	-1.6
Huonville	610	597	-13	-2.1
Launceston	4,289	4,261	-28	-0.7
Mowbray	19	15	-4	%
Rosny Park	1,276	1,257	-19	-1.5
Sorell	606	597	-9	-1.5
Other (a)	18	14	-4	%
<i>Total</i>	15,896	15,657	-239	-1.5
<i>NORTH AUSTRALIA</i>				
Alice Springs	464	428	-36	-7.8
Alice Springs (Remote)	471	470	-1	-0.2
Broome	332	314	-18	-5.4
Casuarina	1,133	1,119	-14	-1.2
Casuarina YSC	1	1	0	%
Derby	77	79	2	%
Katherine	390	382	-8	-2.1
Katherine (Remote)	134	155	21	15.7
Knuckey Street	721	712	-9	-1.2
Kununurra	165	157	-8	-4.8
Nhulunbuy	170	187	17	10.0
Palmerston	994	948	-46	-4.6
Tangentyere	293	305	12	4.1
Tennant Creek	152	165	13	8.6
Tennant Creek (Remote)	48	64	16	%
Other (a)	703	601	-102	-14.5
<i>Total</i>	6,248	6,087	-161	-2.6

Note: For footnotes see end of table.

**TABLE 7 - JOBSSEKERS RECEIVING NEWSTART ALLOWANCE AND YOUTH ALLOWANCE
(OTHER) BY AREA SUPPORT OFFICE AND CUSTOMER SERVICE CENTRE**

<i>Area Support Office and Customer Service Centre</i>	August 2004	September 2004	Variation	
			August - September Number	Per cent
<i>PACIFIC CENTRAL</i>				
Ballina	1,206	1,163	-43	-3.6
Beaudesert	423	414	-9	-2.1
Beenleigh	1,767	1,721	-46	-2.6
Biggera Waters	1,869	1,770	-99	-5.3
Browns Plains	1,538	1,543	5	0.3
Brunswick Heads	779	783	4	0.5
Byron Bay	994	990	-4	-0.4
Casino	814	803	-11	-1.4
Charleville	174	161	-13	-7.5
Coffs Harbour	3,073	2,997	-76	-2.5
Dalby	765	751	-14	-1.8
Goodna	1,150	1,100	-50	-4.3
Goondiwindi	309	309	0	0.0
Grafton	1,754	1,734	-20	-1.1
Inala	1,407	1,402	-5	-0.4
Ipswich	2,253	2,195	-58	-2.6
Lightning Ridge	13	14	1	%
Lismore	2,267	2,228	-39	-1.7
Moree	620	624	4	0.6
Murwillumbah	780	769	-11	-1.4
Narrabri	411	436	25	6.1
Nerang	1,835	1,724	-111	-6.0
Palm Beach	2,393	2,263	-130	-5.4
Roma	136	140	4	2.9
Southport	2,976	2,823	-153	-5.1
Stanthorpe	4	4	0	%
Toowoomba	2,643	2,607	-36	-1.4
Tweed Heads	1,731	1,695	-36	-2.1
Walgett	435	436	1	0.2
Warwick	1,113	1,059	-54	-4.9
Woodridge	2,148	2,095	-53	-2.5
Other (a)	16	20	4	%
<i>Total</i>	39,796	38,773	-1,023	-2.6

Note: For footnotes see end of table.

**TABLE 7 - JOBSEEKERS RECEIVING NEWSTART ALLOWANCE AND YOUTH ALLOWANCE
(OTHER) BY AREA SUPPORT OFFICE AND CUSTOMER SERVICE CENTRE**

<i>Area Support Office and Customer Service Centre</i>	August 2004	September 2004	Variation	
			August - September Number	Per cent
<i>CENTRELINK CALL CENTRES*</i>				
Adelaide	1	1	0	%
Bendigo	0	1	1	%
Brisbane	0	0	0	%
Bunbury	0	0	0	%
Cairns	0	0	0	%
Cardiff	2	1	-1	%
Coffs Harbour	0	0	0	%
Geelong	0	0	0	%
Gosford	0	1	1	%
Hobart	0	0	0	%
Illawarra	0	0	0	%
Indigenous	0	0	0	%
Latrobe	1	1	0	%
Liverpool	0	0	0	%
Maryborough	0	0	0	%
Moorabbin	0	0	0	%
Moreland	0	0	0	%
Perth	1	1	0	%
Port Augusta	0	0	0	%
Port Macquarie	2	1	-1	%
Sydney	0	0	0	%
Toowoomba	0	0	0	%
Townsville	1	0	-1	%
Warilla	0	0	0	%
Wendouree	0	0	0	%
<i>Total</i>	8	7	-1	%
NOT CODED TO AN AREA	4	3	-1	%
AUSTRALIA	406,712	396,377	-10,335	-2.5

(a) Customers not coded to a Customer Service Centre.

% Monthly variations in percentage terms are not included where the Customer Service Centre has a population less than 100 in both of the reported months.

*Jobseekers receiving NSA / YA (o) in the Centrelink Call Centres were previously counted in various Area Offices.

Note: The majority of figures in this publication are averages, and have been rounded. As a result, discrepancies may occur between sums of component items and totals. The discrepancies may also affect the calculation of the variations in Table 2, 3, 5 and 7.

**TABLE 8 - JOBSEEKERS RECEIVING NEWSTART ALLOWANCE AND YOUTH ALLOWANCE (OTHER)
BY FORTNIGHTLY EARNINGS (%) AND SEX (a), FORTNIGHT TO 17 SEPTEMBER 2004**

<i>Fortnightly Earnings</i>	Short-term Jobseekers	Long-term Jobseekers	Total Jobseekers
MALES			
Did not earn an income	84.9	81.7	83.0
Earned an income	15.1	18.3	17.0
Amount earned			
\$0.01 - \$62.00	1.1	1.5	1.3
\$62.01 - \$142.00	3.2	3.8	3.5
\$142.01 - \$236.00	2.9	3.7	3.4
\$236.01 - \$316.00	1.9	2.3	2.1
Over \$316.00	6.1	7.0	6.6
Total	100.0	100.0	100.0
<i>Jobseekers receiving NSA and YA (other)</i>	<i>111,855</i>	<i>151,012</i>	<i>262,867</i>
FEMALES			
Did not earn an income	75.2	71.6	73.0
Earned an income	24.8	28.4	27.0
Amount earned			
\$0.01 - \$62.00	1.7	2.1	1.9
\$62.01 - \$142.00	4.5	5.3	5.0
\$142.01 - \$236.00	4.8	5.3	5.1
\$236.01 - \$316.00	3.3	3.7	3.6
Over \$316.00	10.6	12.1	11.5
Total	100.0	100.0	100.0
<i>Jobseekers receiving NSA and YA (other)</i>	<i>52,980</i>	<i>79,218</i>	<i>132,198</i>
PERSONS			
Did not earn an income	81.8	78.2	79.7
Earned an income	18.2	21.8	20.3
Amount earned			
\$0.01 - \$62.00	1.3	1.7	1.5
\$62.01 - \$142.00	3.6	4.3	4.0
\$142.01 - \$236.00	3.5	4.2	3.9
\$236.01 - \$316.00	2.3	2.8	2.6
Over \$316.00	7.5	8.7	8.2
Total	100.0	100.0	100.0
<i>Jobseekers receiving NSA and YA (other)</i>	<i>164,835</i>	<i>230,230</i>	<i>395,065</i>

(a) Total figures in this table are different from Tables 2 to 7 because of different methodologies applied. Tables 2 to 7 are based on averages of weekly figures while this table is based on point in time data. See Explanatory Notes for further information.

EXPLANATORY NOTES

Introduction

This publication provides monthly statistical information on FaCS labour market and related payments administered by Centrelink. These Explanatory Notes provide details of the scope and methodology of the publication, as well as the policy changes which have affected the data since the publication was introduced in December 1995.

Prior to December 1995, this publication was titled the '*Monthly Job Search and Newstart Allowance Statistics*'.

Scope

The primary focus of the publication is to provide information on unemployed people on Newstart Allowance and Youth Allowance, with a particular focus on the total number of jobseekers. The number of people on Mature Age Allowance, Partner Allowance and Widow Allowance are also reported.

Methodology

Data in this publication relate to the average number of people who are both eligible (eg. meet 'unemployed' qualification) and entitled (eg. meet income and assets criteria) to receive a payment calculated over a reference month. Averages are calculated using figures collected for each Friday throughout the reference month.

Table 1 provides information on the total number of unemployed people on Newstart Allowance and Youth Allowance. The Youth Allowance population is split into Youth Allowance (full-time students) and Youth Allowance (other) categories. Numbers of people on Mature Age Allowance, Partner Allowance and Widow Allowance customers are also provided.

Tables 2 and 3 provide a summary of the Newstart Allowance and Youth Allowance (other) populations and show the derivation of the respective jobseeker populations (see the reference to *Jobseekers* in the Comparability of Data section of these Explanatory Notes). These populations are added together to derive the total number of jobseekers. Tables 4 to 8 provide information on the total jobseeker population.

The earnings data in Table 8 is derived using a different methodology to that of the other tables in the publication. Table 8 is based on the combined population of jobseekers who are eligible for and entitled to receive Newstart Allowance or Youth Allowance (other) at the end of the second last week in the month. Thus, the data obtained from this table will not be directly comparable with those calculated using monthly averages in other tables.

Payment History

Youth Allowance

From 1 July 1998 Youth Allowance was introduced to provide income support to young people, including students, those looking for work, and those who are sick. Youth Allowees may be undertaking full-time study, full-time job search or a combination of approved activities. Some young people will be exempt from the activity test because of their personal circumstances, eg. illness, homelessness or major personal crisis. The Youth Allowance replaced:

- AUSTUDY for 16-24 year olds (and certain 15 year olds);
- Newstart Allowance for 16-20 year olds (and certain 15 year olds);
- Youth Training Allowance for 16-17 year olds (and certain 15 year olds);
- Sickness Allowance for 16-20 year olds (and certain 15 year olds); and
- More-than-minimum rate Family Payment for secondary students aged 16-18 not getting AUSTUDY.

Youth Allowance customers are subject to the parental means test. Under previous arrangements, unemployed people aged 18 to 20 were not subject to the parental means test, unlike 18 to 20 year old students.

Special provisions applied for 18 to 20 year olds who were already on Newstart or Sickness Allowance at the date of announcement of Youth Allowance, and who remained on payment when Youth Allowance commenced on 1 July 1998. This group were able to remain on their existing payment and retain their existing benefits.

Youth Allowance had a significant downward effect on Newstart Allowance numbers from July 1998 and total jobseeker numbers due to the parental means test.

Newstart Allowance

From 1 July 1998, Newstart Allowance for 16-20 year olds (and certain 15 year olds) was replaced by Youth Allowance. Young people aged 18 to 20 years old who were on Newstart or Sickness Allowance at the date of announcement of Youth Allowance, and when Youth Allowance commenced on 1 July 1998 were able to remain on Newstart Allowance.

From 20 September 1996, Job Search Allowance and Newstart Allowance were combined into one payment – Newstart Allowance – which was payable to eligible customers aged 18 years and over and to some people who were in receipt of Job Search Allowance and aged under 18 at 31 December 1994 (see *Job Search Allowance*).

Prior to 20 September 1996, Newstart Allowance was payable to eligible persons over 18 years who had been registered as unemployed with the CES for 12 months or more.

<i>Job Search Allowance</i>	<p>From 20 September 1996, the payment was combined with Newstart Allowance to form one payment called Newstart Allowance. All Job Search Allowance customers were transferred to Newstart Allowance.</p> <p>Prior to 20 September 1996, Job Search Allowance was payable to eligible persons who had been registered as unemployed with the CES for up to 12 months. It was also payable to eligible persons who were in receipt of Job Search Allowance and under 18 years of age at 31 December 1994. Persons aged 15 to 18 years who were not receiving Job Search Allowance prior to 1 January 1995 commenced on Youth Training Allowance.</p>
<i>Sickness Allowance</i>	<p>From 17 March 1996, persons in receipt of Newstart Allowance or Youth Training Allowance who became temporarily incapacitated no longer transferred to Sickness Allowance after 13 weeks. This change had the effect of increasing total Newstart Allowance/Youth Training Allowance figures but did not affect Jobseeker figures as those customers who were incapacitated were excluded from the Newstart and Youth Training Jobseeker populations.</p> <p>Under current arrangements, these customers remain on their existing payments but are exempt from the activity test for the duration of their medical certificates. People who become unemployed because of illness, and those who suffer a potential loss of income due to sickness, are paid Newstart Allowance because they are unemployed.</p> <p>Sickness Allowance for 16 to 20 year olds (and certain 15 year olds) has now been replaced by Youth Allowance, which was introduced on 1 July 1998 (see <i>Youth Allowance</i>).</p>
<i>Partner Allowance</i>	<p>From 20 September 2003, Partner Allowance was closed off to new claimants. People on Partner Allowance before this date can remain on the allowance while they remain 'current', that is retain eligibility and entitlement for the allowance.</p> <p>From 1 July 1995 Partner Allowance has only been granted to persons who are dependent partners of pensioners and allowees who were born before 1 July 1955, have no dependent children and have little or no recent workforce experience. Other dependent partners have to qualify for an income support payment in their own right, such as Newstart Allowance.</p> <p>Partner Allowance was introduced in September 1994, and was paid to partners of persons receiving Job Search Allowance, Newstart Allowance, Sickness Allowance or Special Benefit if certain eligibility criteria were satisfied.</p>
<i>Youth Training Allowance</i>	<p>Youth Training Allowance was replaced by Youth Allowance on 1 July 1998 (see <i>Youth Allowance</i>).</p>

From 1 January 1995, eligible persons aged under 18 years who were new entrants to the job search pool were paid Youth Training Allowance. (People who were in receipt of Job Search Allowance and aged under 18 years at 31 December 1994 continued to be paid Job Search Allowance. From 20 September 1996, those young persons still being paid Job Search Allowance were transferred to Newstart Allowance.)

Widow Allowance

Widow Allowance, introduced in 1 January 1995, is payable to females aged 50 years or over who have become widowed, divorced or separated since turning 40 years (50 prior to 20 March 1997), if they meet a number of other criteria relating to current marital status and recent work experience. This has had a slight downwards effect on Newstart Allowance numbers from January 1995.

Mature Age Allowance

From 20 September 2003, Mature Age Allowance was closed off to new claimants. People on Mature Age Allowance before this date can remain on the allowance while they remain 'current', that is retain eligibility and entitlement for the allowance.

From 1 July 1996, the qualification conditions for Mature Age Allowance changed for new claimants. The requirement for 12 months prior receipt of income support was reduced to 9 months for people transferring from Newstart Allowance and removed entirely for people transferring from non-activity tested payments. The requirement to have been registered as unemployed for 12 months was replaced with a requirement to have no recent workforce experience. Reporting of these new claimants commenced from September 1996.

Mature Age Allowance was introduced on 24 March 1994, and was paid to long-term unemployed persons aged 60 years and over (but below Age Pension age) who had been receiving income support for 12 months or more and who were eligible for Newstart Allowance. The introduction of Mature Age Allowance has had a downwards effect on Newstart Allowance numbers from April 1994.

Comparability of Data

There have been significant changes to the data presented in this publication due to a number of events. The main changes are: the method of counting customers; the inclusion of some CDEP customers in the total customer numbers; the introduction of Youth Allowance in July 1998; the way 'jobseeker' is defined; and the way duration is calculated. People using this data to construct time series should note the following comments.

Definition of Customer

From July 2002, FaCS introduced a new method to more accurately measure the number of people receiving labour market and related payments. For those receiving labour market and related payments, their eligibility and entitlement status is administered by a payment system called Newstart Common Platform System. Within this system customers who are both

eligible and entitled to receive a payment have a determination status of 'current'. The new method therefore counts these 'current' customers.

The old method of counting customers was specified to include all paid customers – those who received a payment within a given fortnight. As compiled, however, this count excluded, from mid 1998, customers who received a 'one-off' payment. These can occur, for instance, when a normal payment is interrupted (eg. payment is cancelled and then restored within that pay period) and a portion of the normal payment is paid.

The time series in Tables 1 and 4 reflect the revised method, as does the remainder of the publication. Revised historical data for these time series back to May 1998 can be found in the July 2002 publication.

From July 2003 a more sustainable methodology was introduced for this revised customer count. Due to limitations in available data sources in 2002, the revised customer count had to be derived through a complicated process. This more sustainable methodology resulted in slight differences from the customer numbers used in previous editions.

Community Development Employment Projects (CDEP) From 20 March 2000, eligible participants in CDEP started receiving CDEP participant supplement and other add-ons, such as rent assistance, as part of income support payments. This added a number of new customers to those who are normally eligible for payments reported in this publication.

Introduction of Youth Allowance The sum of the number of Newstart Allowees and Youth Training Allowees prior to July 1998 is broadly comparable with the sum of Newstart Allowees and Youth Allowees (other) after July 1998. There are two main problems in comparing these two series. The first is the exclusion of some 18 to 20 year old unemployed people due to the application of the Youth Allowance parental means test (see the *Youth Allowance* section under Payment History). The second is the inclusion of Sickness Allowees in the Youth Allowance (other) population.

There is greater comparability between total Newstart Allowance and Youth Training Allowance Jobseekers prior to July 1998 and total Newstart Allowance and Youth Allowance (other) Jobseekers after July 1998. This is because the Sickness Allowance group is excluded from the jobseeker total. The problem, however, of the exclusion of some customers through the application of the Youth Allowance parental means test still remains.

Jobseekers Prior to July 1998, the jobseeker category was defined by excluding all Newstart Allowees who did not receive a payment, customers who were incapacitated, and those receiving a payment who were undertaking training. Some people who were not required to engage in job search were classified as jobseekers, including people undertaking full-time voluntary work,

people on jury duty and pregnant women around the time of the birth of their child.

From July 1998, the definition of jobseekers has been placed on a sounder conceptual basis. It is now derived for Newstart Allowance and Youth Allowance (other) customers by excluding all people who did not receive a payment due to their own and/or their partner's income, or where applicable, their parent's, and all those known not to be required to search for work. People receiving Intensive Support Customised Assistance under Job Network arrangements are classified as jobseekers although they may not always be undertaking job search. These people negotiate their activity agreement with their Job Network member.

The total number of jobseekers (comparable to pre-July 1998 estimates) is calculated by adding together the number of jobseekers in receipt of Newstart Allowance and Youth Allowance (other) – see the Explanatory Notes on *Youth Allowance*.

Duration

Following system changes in May 1998, duration has been defined according to the time a customer spends on income support – short-term customers are those who have been on income support for up to 12 months and long-term customers are those who have been on income support for 12 months or more.

Prior to 1998, duration was defined according to the time a customer was registered as unemployed – short-term customers were people who were registered as unemployed for up to 12 months and long-term customers were people who were registered for 12 months or more.

Closure of Mature Age and Partner allowances

From 20 September 2003, Mature Age Allowance and Partner Allowance were closed off to new claimants. People on these allowances before this date can remain on that allowance while they remain 'current', that is retain eligibility and entitlement for the allowance. The majority of people who would previously have claimed these payments will now claim Newstart Allowance.

Symbols

n.a. not available
.. not applicable

GLOSSARY

Activity Test Status	The activity that a Newstart Allowance or Youth Allowance (other) customer has agreed to undertake in order to meet the activity test. To satisfy the activity test customers must be actively seeking and willing to take up work or undertaking activities to improve their employment prospects.
Age	Age in years at time of data collection.
Area Support Office	A Centrelink office that supports a set of Customer Service Centres for a specified area. These are generally not confined to State boundaries.
Centrelink Youth Service Centre	A Centrelink Youth Service Centre consists of specialised staff who provide young people with improved access to Government services and income support. This is done by offering a mainstream FaCS service, as well as specialist case management to help access educational, labour market, job search, housing, health and general welfare assistance; and by providing a regular FaCS visiting service to youth via hostels, refuges and voluntary agencies.
Community Development Employment Projects (CDEP)	<p>The CDEP scheme is a program funded by the Aboriginal and Torres Strait Islander Commission (ATSIC). The scheme enables Aboriginal and Torres Strait Islander community councils and other approved Aboriginal and Torres Strait Islander groups to offer work to community members in activities that assist individuals in acquiring skills which benefit the community, develop business enterprises and/or lead to unsubsidised employment. The scheme also aims to develop management and business skills in an environment conducive to the principles of self-determination.</p> <p>The CDEP Participant Supplement (CPS) is payable to eligible CDEP participants. It can be paid fortnightly or as a 12 weekly payment.</p>
Customer Service Centre	A Customer Service Centre set within a particular region that provides FaCS and other payments and related information and services to customers. Customer Service Centres are managed by Area Support Offices.
Did Not Receive a Payment	Persons who did not receive a payment due to their own income and/or that of their partner, or parents, where applicable. This group is often referred to as 'zero-paid'.
Eligibility and Payment Status	Refer to the Methodology entry in the Explanatory Notes.
Fortnightly Earnings	Amount of income earned, derived, or received by a person for the person's own use or benefit in the previous fortnight.
Incapacitated	A person on Newstart Allowance or Youth Allowance (other) who has an activity test status indicating they are temporarily ill or incapacitated. Refer to the entry for Sickness Allowance in the Explanatory Notes.

Jobseekers	A person on Newstart Allowance or Youth Allowance (other) who would usually be engaged in jobsearch. See Explanatory Notes for definition and history.
Job Search Allowance (JSA)	Up to 20 September 1996, Job Search Allowance was payable to eligible persons who had been registered as unemployed with the CES for up to 12 months. From 20 September 1996, the payment was combined with Newstart Allowance to form one payment called Newstart Allowance. See Explanatory Notes for history.
Long-term Customers	Persons on Newstart Allowance or Youth Allowance who have been receiving income support for 12 months or more. Duration of long-term customers can be reset to zero if they exited from payments for more than 13 weeks.
Mature Age Allowance (MAA)	<p>From 20 September 2003, Mature Age Allowance was closed off to new claimants. People on Mature Age Allowance before this date can remain on the allowance while they remain 'current', that is retain eligibility and entitlement for the allowance.</p> <p>Mature Age Allowance, a non-activity-tested payment, is payable to unemployed people aged 60 years and over (but below Age Pension age) with little or no recent workforce experience who meet certain requirements for previous receipt of income support. See Explanatory Notes for history.</p>
Newstart Allowance (NSA)	Newstart Allowance is payable to eligible unemployed persons aged 21 years and over (but below Age Pension age) who satisfy the activity test. See Explanatory Notes for history.
Newstart Common Platform System (NCP)	The Newstart Common Platform System (NCP) was introduced in May 1998. The NCP administers all labour market and related payments. This includes primary payments such as Newstart Allowance, Youth Allowance, Mature Age Allowance, Widow Allowance and Partner Allowance. Other payments on the NCP include Special Benefit, Sickness Allowance, Exceptional Circumstances Relief, Farm Help and Austudy.
Partner Allowance (PA)	<p>From 20 September 2003, Partner Allowance was closed off to new claimants. People on Partner Allowance before this date can remain on the allowance while they remain 'current', that is retain eligibility and entitlement for the allowance.</p> <p>Partner Allowance, a non-activity-tested payment, is payable to persons who are dependent partners of pensioners and allowees who were born before 1 July 1955, have no dependent children and have little or no recent workforce experience. See Explanatory Notes for history.</p>
Short-term Customers	Persons on Newstart Allowance or Youth Allowance who have been receiving income support for less than 12 months. Duration of short-term customers can be reset to zero if they exited from payments for more than 6 weeks.
States	States and Territories of Australia derived from the postcode of the customer's residence as held on the Centrelink payment system.

Widow Allowance (WA)	Widow Allowance, a non-activity-tested payment, is payable to females aged 50 years or over who have become widowed, divorced or separated since turning 40 years if they have little or no recent work experience and meet a number of other criteria relating to current marital status. See Explanatory Notes for history.
Youth Training Allowance (YTA)	From 1 January 1995 eligible persons aged under 18 years who were registered as unemployed with the CES were paid Youth Training Allowance. From 1 July 1998, Youth Training Allowance was replaced by Youth Allowance. See Explanatory Notes for history.
Youth Allowance (YA)	<p>Youth Allowance is payable to eligible full-time students aged 16 to 25 years, and to eligible unemployed persons aged 16 to 21 years who satisfy the activity test. Note, there are certain exceptions for some 15 and 25 year olds. See Explanatory Notes for history.</p> <p>Youth Allowees may be undertaking full-time study, full-time job search or a combination of approved activities. Some young people will be exempt from the activity test because of their personal circumstances, eg. illness, homelessness or major personal crisis. See the Explanatory Notes for more information.</p>
Youth Allowance (other)	Youth Allowance customers who are not full-time students.
Zero-Paid	See 'Did Not Receive a Payment'.

APPENDIX

COMPARISONS BETWEEN FaCS LABOUR MARKET PAYMENT NUMBERS AND ABS UNEMPLOYMENT STATISTICS

Official Statistics	Official unemployment statistics are released by the Australian Bureau of Statistics (ABS). The ABS uses definitions recommended by the International Labour Office which have been accepted internationally as the most appropriate for the compilation of official statistics of unemployment.
ABS Definition	The ABS unemployment statistics measure the number of persons who, for a particular reference period, did not undertake any paid work, were actively looking for work and were available to start work.
FaCS Labour Market Payment Statistics	The labour market payment statistics give the number of persons who are both eligible and entitled to receive Newstart Allowance or Youth Allowance (other). The criteria for receipt of these payments do not match those the ABS uses to determine whether a person is classed as unemployed or employed for statistical purposes.
Differences	Care should be taken when comparing the ABS and FaCS labour market payment data. There are a number of reasons why the two series cannot be directly compared.
<i>Duration</i>	<p>Both FaCS and the ABS classify long term duration as over 12 months, but use substantially different definitions of duration:</p> <p>FaCS measures duration of income support. This includes not just time on unemployment benefits but time on any income support payment.</p> <p>The ABS measures length of time unemployed using their unemployment definition.</p> <p>FaCS unemployed clients can have breaks without payment for up to 25 weeks but still be classified long term income support clients:</p> <ul style="list-style-type: none">- Clients who do not receive a payment due to their earnings can have up to 12 weeks without a payment before they are automatically cancelled. This reduces disincentives to accept short-term work.- Long-term clients can have another 13 weeks off payment after payment is cancelled and still keep their long-term status if they return to income support. This means they keep access to assistance such as the Employment Entry Payment and the higher payment rate for clients over 60. <p>For the ABS statistics, any hours of work for a period as short as two weeks count as a break from unemployment and so are enough to reset a person's unemployment duration.</p> <p>The difference between these two concepts, together with the fact that FaCS clients are able to have ongoing part-time work (see 'employment' below) mean that many unemployed clients remain classified by FaCS as long-term clients when they would be classified as short-term unemployed under the ABS definition.</p>
<i>Seasonal Adjustment</i>	The ABS produces a seasonally adjusted series. The FaCS statistics are not seasonally adjusted.

<i>Classification</i>	<p>The ABS classifies a person as unemployed if he or she is aged 15 years and over, was not employed during the week before the interview, has actively looked for full-time or part-time work and is available to start work. From February 2004, people who had not actively looked for work because they were waiting to start a job within four weeks, are also classified as unemployed.</p> <p>The Newstart Allowance and Youth Allowance (other) series generally count people who are eligible for and entitled to receive a payment between the ages of 15 years and 64 years in the case of men (excluding recipients of Mature Age Allowance) and 15 to 62 years in the case of women (excluding recipients of Mature Age, Partner, and Widow Allowances).</p>
<i>Employment</i>	<p>Newstart Allowance and Youth Allowance (other) recipients may be employed part-time, but within an income test limit; the ABS classifies a person as "employed" if, among other things, he or she has worked for one hour or more during the survey period.</p>
<i>Timing</i>	<p>The timing of collections of the series are different:</p> <p>FaCS reports monthly average numbers of people both eligible for and entitled to receive Newstart Allowance and Youth Allowance (other). These monthly averages are calculated using figures collected for each Friday throughout the reference month.</p> <p>ABS numbers are based on a sample interview survey of occupants of selected dwellings covering around 0.5% of the total Australian population. These persons are interviewed during the two weeks beginning the Monday between the 6th and 12th of each month and the information obtained is based on the week before the interview takes place.</p>
<i>Treatment of Partners</i>	<p>The ABS series includes unemployed persons whose spouse is working, irrespective of income, whereas Newstart Allowance and Youth Allowance (other) recipients are subject to an income and assets test for themselves and their spouse.</p>
<i>Pensioners</i>	<p>The ABS series includes persons being paid a pension but looking for work (eg sole parents in receipt of Parenting Payments looking for work).</p>
<i>Non-jobseekers</i>	<p>The overall Newstart Allowance and Youth Allowance (other) series includes persons who are not undertaking jobsearch. These persons are separately identified in Tables 2 and 3, and have then been excluded in subsequent tables. These people may be undertaking training, the development of self-employment opportunities, full-time voluntary work or a combination of voluntary and part-time work which excludes them from jobsearch obligations. They may also be incapacitated or have another temporary or permanent exemption from jobsearch.</p>
<i>Waiting Periods</i>	<p>The ABS series includes persons who are serving a waiting period before being granted Newstart Allowance or Youth Allowance (other), or whose allowance was deferred.</p>
<i>Survey</i>	<p>The ABS figures are derived from a Labour Force Survey which is a sample survey, whereas the FaCS statistics are a complete count of those both eligible for and entitled to receive Newstart Allowance and Youth Allowance (other).</p>

FOR MORE INFORMATION

Labour Market Information

Other statistics are available on recipients of FaCS labour market related payments on request.

In addition to Newstart and Youth Allowances, statistics are also available on Partner Allowance, Mature Age Allowance, Sickness Allowance, Special Benefit and Widow Allowance.

For further information please contact the Business Information Help Desk on (02) 6244 7270.

Written correspondence concerning this publication or statistics on FaCS labour market related payments should be addressed to:

Director
Newstart Program Management and Policy Section
Department of Family and Community Services
CW3
PO Box 7788
Canberra Mail Centre ACT 2610

or forwarded via facsimile to (02) 6244 7978.

Other Customer Information

Statistics are also available relating to other customers, including customer numbers and characteristics for the various FaCS Pension and Family Payments.

For further information please contact the Business Information Help Desk on (02) 6244 7270.

Other Statistical Outputs:

The following statistical output is available on request:

*Commonwealth Department of Family and Community Services
Customers - A Statistical Overview, 1996, 1997, 1998, 1999, 2000
and 2001 - produced annually.*