



# AUSTRALIAN REGIONAL LABOUR MARKETS

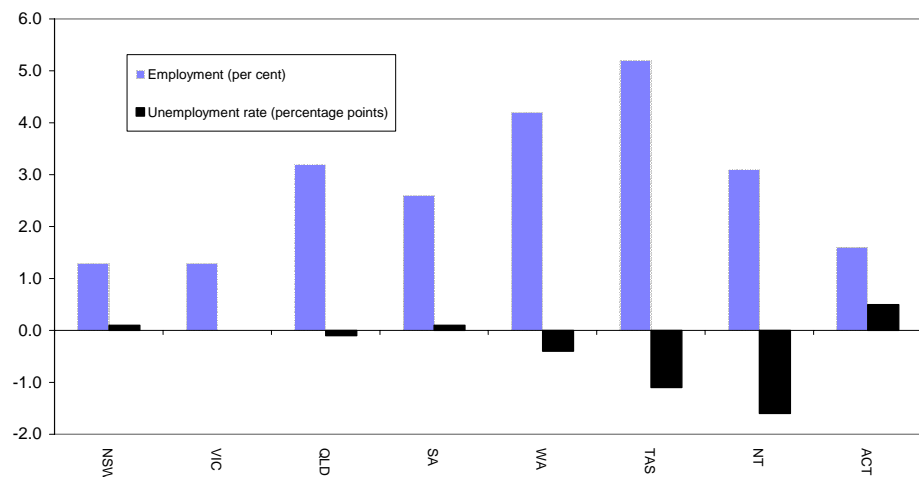
## SEPTEMBER QUARTER 2008

### MAIN FINDINGS

#### State/territory labour market developments

Employment rose in all States and Territories over the year to the September quarter 2008. The largest increase (in percentage terms) was recorded in Tasmania (up by 5.2 per cent), followed by Western Australia (up by 4.2 per cent) and Queensland (up by 3.2 per cent). The unemployment rate rose in the Australian Capital Territory (up by 0.5 percentage points to 2.9 per cent), New South Wales (up by 0.1 percentage points to 4.6 per cent) and South Australia (up by 0.1 percentage points to 4.7 per cent) and was unchanged in Victoria (at 4.3 per cent). On the other hand, the unemployment rate fell in the Northern Territory (down by 1.6 percentage points to 2.4 per cent), Tasmania (down by 1.1 percentage points to 4.1 per cent), Western Australia (down by 0.4 percentage points to 2.8 per cent) and Queensland (down by 0.1 percentage points to 3.4 per cent).

**CHANGE IN EMPLOYMENT AND THE UNEMPLOYMENT RATE  
SEPTEMBER QUARTER 2007 TO SEPTEMBER QUARTER 2008**



#### Developments at the ABS Labour Force Region Level

Employment increased in 74 per cent of regions over the year to the September quarter 2008, while 49 per cent of regions recorded a reduction in their unemployment rate. A number of regions have recorded strong employment growth as well as a significant reduction in their unemployment rate over the last 12 months. In particular:

- Northern-North West Queensland recorded a 15.1 per cent increase in employment while the unemployment rate fell by 1.2 percentage points to 2.0 per cent;
- Northern Tasmania recorded a 9.7 per cent increase in employment while the unemployment rate fell by 2.1 percentage points to 3.5 per cent;
- employment in Inner Sydney and Inner Western Sydney rose by 8.4 per cent while the unemployment rate fell by 1.5 percentage points to 2.5 per cent.

**LABOUR FORCE STATUS BY ABS LABOUR FORCE REGIONS**  
**SEPTEMBER QUARTER 2008**  
**Not Seasonally Adjusted**

State/Region	Employed		Unemployed		Unemployment rate		Employment rate (a)		Participation rate	
	'000	Annual change	'000	Annual change	%	Annual change (% pts)	%	Annual change (% pts)	%	Annual change (% pts)
<b>AUSTRALIA</b>	<b>10 742.0</b>	<b>230.1</b>	<b>451.0</b>	<b>4.4</b>	<b>4.0</b>	<b>0.0</b>	<b>73.2</b>	<b>0.2</b>	<b>65.1</b>	<b>0.2</b>
<i>Metropolitan Australia (b)</i>	6755.3	167.6	275.7	0.5	3.9	-0.1	73.8	0.6	66.0	0.4
<i>Non-metropolitan Australia (b)</i>	3986.7	62.5	175.3	3.9	4.2	0.0	72.2	-0.4	63.7	-0.2
<b>New South Wales</b>	<b>3405.6</b>	<b>42.6</b>	<b>165.5</b>	<b>7.3</b>	<b>4.6</b>	<b>0.1</b>	<b>71.3</b>	<b>0.2</b>	<b>63.1</b>	<b>0.0</b>
<i>Sydney</i>	2221.5	31.8	104.0	7.3	4.5	0.2	72.3	0.4	65.0	0.2
Inner Sydney and Inner Western Sydney	288.1	22.4	7.5	-3.7	2.5	-1.5	76.2	3.0	69.8	3.6
Inner Sydney	199.0	16.6	4.9	0.2	2.4	-0.1	77.0	1.2	73.5	5.3
Eastern Suburbs	138.7	1.6	4.8	1.5	3.4	1.0	74.8	-1.1	65.4	0.6
St George-Sutherland	233.1	-10.0	8.9	4.8	3.7	2.0	73.6	-3.8	63.8	-2.2
Canterbury-Bankstown	142.4	4.3	9.1	0.4	6.0	0.1	64.2	-0.3	57.4	1.0
Fairfield-Liverpool/ Outer South Western Sydney	288.1	-5.0	21.7	3.3	7.0	1.1	66.9	-1.6	64.6	-1.2
Fairfield-Liverpool	168.0	6.8	13.2	1.2	7.3	0.4	64.7	0.8	62.5	2.0
Central Western Sydney	147.7	5.3	9.6	2.5	6.1	1.3	66.9	2.0	61.5	2.3
North Western Sydney	300.8	10.1	18.0	-0.5	5.6	-0.3	70.1	1.4	66.5	1.1
Lower Northern Sydney	176.3	6.1	5.7	0.9	3.1	0.4	77.3	1.6	68.6	1.8
Central Northern Sydney	230.9	-1.6	6.9	1.8	2.9	0.8	78.8	2.1	67.7	-0.9
Northern Beaches	139.1	0.5	2.6	-0.7	1.9	-0.5	81.1	0.0	69.5	-1.1
Gosford-Wyong	136.2	-1.9	9.2	-2.9	6.3	-1.7	68.6	0.7	57.2	-2.7
<i>Balance of New South Wales</i>	1184.1	10.8	61.5	0.0	4.9	0.0	69.5	-0.2	59.9	-0.3
Hunter	290.6	5.3	12.6	0.8	4.1	0.2	71.4	0.8	60.0	0.4
Newcastle	244.2	7.2	10.1	1.1	4.0	0.3	71.1	1.0	60.1	1.2
Illawarra and South Eastern	293.7	21.1	13.2	-1.3	4.3	-0.7	69.5	3.1	60.5	3.1
Illawarra	192.8	19.5	10.2	-1.4	5.0	-1.3	68.4	5.1	59.3	4.5
Wollongong	136.0	11.6	7.8	-1.1	5.4	-1.3	71.5	5.3	62.1	3.8
Richmond-Tweed/ Mid-North Coast	207.9	-15.5	16.9	3.9	7.5	2.0	62.9	-3.9	52.6	-3.5
Northern/ Far West-North Western/ Central West	260.2	11.2	13.1	-1.7	4.8	-0.8	72.9	0.4	65.2	1.4
Murray-Murrumbidgee	131.6	-11.3	5.8	-1.7	4.2	-0.8	70.7	-4.2	62.1	-6.8
<b>Victoria</b>	<b>2637.7</b>	<b>34.3</b>	<b>117.3</b>	<b>1.0</b>	<b>4.3</b>	<b>0.0</b>	<b>72.4</b>	<b>-0.5</b>	<b>64.4</b>	<b>-0.3</b>
<i>Melbourne</i>	1952.4	40.0	82.4	-0.4	4.1	-0.1	73.0	0.1	65.3	0.1
Outer Western Melbourne	309.3	9.4	17.7	0.5	5.4	0.0	71.4	0.9	65.7	0.9
North Western Melbourne	133.8	1.0	6.2	-0.7	4.4	-0.5	70.0	3.1	58.5	-0.9
Inner Melbourne	173.8	5.6	6.1	0.1	3.4	0.0	77.2	0.9	73.7	1.1
North Eastern Melbourne	234.6	1.7	10.2	-0.9	4.1	-0.4	73.7	1.4	64.6	-0.9
Inner Eastern Melbourne	324.8	2.1	11.7	0.5	3.5	0.1	72.3	-1.3	63.0	-0.6
Southern Melbourne	225.7	8.9	9.4	1.6	4.0	0.5	74.6	0.4	66.2	1.8
Outer Eastern Melbourne	221.0	-5.0	7.5	0.1	3.3	0.1	75.8	-3.0	67.2	-2.7
South Eastern Melbourne	195.1	13.9	8.0	-2.1	3.9	-1.4	68.6	0.8	66.0	2.7
Mornington Peninsula	134.3	2.5	5.7	0.5	4.1	0.3	74.9	-1.5	64.3	0.1
<i>Balance of Victoria</i>	685.3	-5.7	34.8	1.4	4.8	0.2	70.7	-2.2	61.9	-1.5
Barwon-Western District	195.0	11.1	7.5	-1.1	3.7	-0.8	72.2	-1.7	64.7	2.1
Central Highlands-Wimmera	91.9	-7.2	8.2	2.4	8.2	2.7	64.0	-7.2	59.4	-4.0
Loddon-Mallee	132.5	-4.0	7.9	0.5	5.6	0.5	70.9	-1.6	62.6	-2.7
Goulburn-Ovens-Murray	141.3	-11.6	6.6	2.5	4.5	1.9	70.3	-5.5	59.7	-4.8
All Gippsland	124.6	6.0	4.7	-2.9	3.6	-2.4	73.9	4.4	61.5	0.4

(a) The employment rate refers to the proportion of the working age (15-64) population who are employed.

(b) The ABS defines metropolitan as those regions located within the State capital cities. Non-metropolitan is defined as those regions located outside the State capital cities as well as the two Territories.

**LABOUR FORCE STATUS BY ABS LABOUR FORCE REGIONS  
SEPTEMBER QUARTER 2008  
Not Seasonally Adjusted**

State/Region	Employed		Unemployed		Unemployment rate		Employment Rate (a)		Participation rate	
	'000	Annual change	'000	Annual change	%	Annual change (% pts)	%	Annual change (% pts)	%	Annual change (% pts)
<b>Queensland</b>	<b>2212.0</b>	<b>68.6</b>	<b>77.3</b>	<b>0.3</b>	<b>3.4</b>	<b>-0.1</b>	<b>75.3</b>	<b>0.2</b>	<b>67.5</b>	<b>0.3</b>
Gold Coast	255.2	-7.5	13.1	4.1	4.9	1.6	72.0	-4.3	65.1	-2.5
<i>Brisbane</i>	<i>1040.0</i>	<i>42.9</i>	<i>33.0</i>	<i>-4.2</i>	<i>3.1</i>	<i>-0.5</i>	<i>76.5</i>	<i>0.9</i>	<i>69.1</i>	<i>0.8</i>
Brisbane City Inner Ring	279.0	12.0	7.4	-1.4	2.6	-0.6	81.1	1.4	75.2	1.0
Brisbane City Outer Ring	318.6	18.9	7.5	-3.2	2.3	-1.2	76.6	2.5	66.7	1.6
South and East Brisbane Balance	227.4	22.1	10.3	1.1	4.3	0.1	76.4	3.0	73.2	5.5
North and West Brisbane Balance	214.9	-10.1	7.8	-0.7	3.5	-0.2	71.3	-3.8	62.2	-4.7
<i>Balance of Queensland</i>	<i>1172.0</i>	<i>25.7</i>	<i>44.3</i>	<i>4.5</i>	<i>3.6</i>	<i>0.3</i>	<i>74.3</i>	<i>-0.4</i>	<i>66.1</i>	<i>0.0</i>
South and East Moreton	245.1	-8.3	12.1	3.3	4.7	1.4	72.3	-4.0	65.1	-3.0
North and West Moreton	183.1	-4.1	6.3	-1.0	3.3	-0.4	75.7	0.3	62.2	-3.3
Wide Bay-Burnett	119.1	5.2	6.4	1.3	5.1	0.8	66.8	1.2	56.9	1.5
Darling Downs-South West	142.1	6.8	2.2	-1.1	1.5	-0.9	78.0	4.8	66.6	0.9
Mackay-Fitzroy-Central West	197.4	0.4	7.1	2.2	3.5	1.0	74.3	-4.8	68.0	-0.9
Northern-North West	148.5	19.4	3.0	-1.2	2.0	-1.2	81.6	7.7	75.3	7.3
Far North	136.6	6.3	7.2	1.1	5.0	0.6	72.8	-2.7	71.3	1.9
<b>South Australia</b>	<b>782.8</b>	<b>20.2</b>	<b>38.7</b>	<b>2.1</b>	<b>4.7</b>	<b>0.1</b>	<b>72.0</b>	<b>0.6</b>	<b>63.1</b>	<b>1.0</b>
<i>Adelaide</i>	<i>568.7</i>	<i>8.3</i>	<i>29.1</i>	<i>0.1</i>	<i>4.9</i>	<i>-0.1</i>	<i>71.3</i>	<i>0.2</i>	<i>62.1</i>	<i>0.1</i>
Northern Adelaide	176.8	9.9	11.1	0.3	5.9	-0.2	69.9	1.7	64.1	2.8
Western Adelaide	98.9	-1.8	6.2	0.6	5.9	0.6	68.5	-2.1	56.4	-1.3
Eastern Adelaide	115.0	-2.9	3.6	-0.8	3.1	-0.6	71.5	-1.1	59.5	-2.6
Southern Adelaide	178.0	3.0	8.3	0.0	4.4	-0.1	74.5	0.9	65.8	0.3
<i>Balance of South Australia</i>	<i>214.2</i>	<i>11.9</i>	<i>9.5</i>	<i>2.0</i>	<i>4.3</i>	<i>0.7</i>	<i>73.9</i>	<i>1.9</i>	<i>66.1</i>	<i>3.3</i>
Northern and Western SA	76.9	-3.2	4.9	1.3	6.0	1.7	67.5	-5.4	62.0	-2.2
Southern and Eastern SA	137.3	15.1	4.6	0.7	3.2	0.1	78.0	6.6	68.7	6.9
<b>Western Australia</b>	<b>1160.9</b>	<b>46.3</b>	<b>33.6</b>	<b>-3.5</b>	<b>2.8</b>	<b>-0.4</b>	<b>76.9</b>	<b>1.0</b>	<b>68.9</b>	<b>0.6</b>
<i>Perth</i>	<i>870.7</i>	<i>42.0</i>	<i>23.4</i>	<i>-1.7</i>	<i>2.6</i>	<i>-0.3</i>	<i>78.3</i>	<i>1.8</i>	<i>69.7</i>	<i>1.3</i>
Central Metropolitan	73.6	-3.8	2.3	0.4	3.0	0.6	75.0	-2.8	64.8	-4.8
East Metropolitan	149.9	13.5	3.5	0.4	2.3	0.0	76.8	1.2	70.4	4.6
North Metropolitan	265.7	13.6	6.1	-2.1	2.3	-0.9	78.9	0.7	70.9	1.1
South West Metropolitan	181.3	7.1	5.7	0.5	3.0	0.2	80.6	4.0	69.5	1.0
South East Metropolitan	200.2	11.7	5.7	-1.0	2.8	-0.6	77.9	3.6	69.6	1.8
<i>Balance of Western Australia</i>	<i>290.2</i>	<i>4.3</i>	<i>10.2</i>	<i>-1.7</i>	<i>3.4</i>	<i>-0.6</i>	<i>72.9</i>	<i>-1.4</i>	<i>66.9</i>	<i>-1.3</i>
Lower Western WA	160.2	11.7	5.0	-1.5	3.0	-1.1	74.7	-0.1	68.3	2.4
Remainder-Balance WA	130.1	-7.4	5.3	-0.3	3.9	0.0	70.8	-2.9	65.2	-5.6
<b>Tasmania</b>	<b>238.6</b>	<b>11.7</b>	<b>10.3</b>	<b>-2.2</b>	<b>4.1</b>	<b>-1.1</b>	<b>71.3</b>	<b>2.6</b>	<b>62.2</b>	<b>1.8</b>
Greater Hobart-Southern	118.2	3.0	4.5	-0.7	3.7	-0.7	71.0	0.6	61.9	0.5
<i>Greater Hobart</i>	<i>102.1</i>	<i>2.6</i>	<i>3.8</i>	<i>-0.6</i>	<i>3.6</i>	<i>-0.6</i>	<i>72.0</i>	<i>1.0</i>	<i>62.5</i>	<i>0.6</i>
Northern	68.6	6.1	2.5	-1.2	3.5	-2.1	72.6	5.5	63.0	3.7
Mersey-Lyell	51.8	2.7	3.3	-0.2	6.0	-0.7	70.2	3.2	61.7	2.2
<b>Northern Territory</b>	<b>111.8</b>	<b>3.3</b>	<b>2.7</b>	<b>-1.8</b>	<b>2.4</b>	<b>-1.6</b>	<b>74.2</b>	<b>0.3</b>	<b>71.8</b>	<b>-1.1</b>
<b>Australian Capital Territory</b>	<b>192.4</b>	<b>3.1</b>	<b>5.7</b>	<b>1.0</b>	<b>2.9</b>	<b>0.5</b>	<b>80.1</b>	<b>0.0</b>	<b>73.0</b>	<b>0.2</b>

(a) The employment rate refers to the proportion of the working age (15-64) population who are employed.

## EXPLANATORY NOTES

### Introduction

The regional labour market estimates presented in this brochure are three-month averages derived from the Australian Bureau of Statistics (ABS) Monthly Labour Force Survey. These estimates are not adjusted to take account of seasonal and other variations and can exhibit irregular movements. They should therefore be used with caution.

### Related information

Users may wish to refer to the DEEWR *Small Area Labour Markets, Australia* publication, which is available, free of charge, at <http://www.workplace.gov.au> (in PDF format), or as a printed booklet upon request. This publication contains quarterly estimates of unemployment rates and levels for approximately 1350 Statistical Local Areas.

### Next issue

The next issue of *Australian Regional Labour Markets*, for the December quarter 2008, is expected to be released in late January 2008.

### Contact details

This brochure was prepared by the Economic, Labour Market and Education Analysis Branch, Department of Education, Employment and Workplace Relations, Canberra. For further information on this brochure or related statistics, contact Kellie Gavin in the Labour Market Analysis Section on (02) 6121 3538 or email [Kellie.Gavin@deewr.gov.au](mailto:Kellie.Gavin@deewr.gov.au).

More detailed monthly national, State and regional labour force statistics are available from the ABS. For further information on ABS labour force statistics, go to the 'Labour' theme page at the ABS website ([www.abs.gov.au](http://www.abs.gov.au)), or contact the ABS Labour Force Survey area on (02) 6252 6525.