

LABOUR MARKET AND RELATED PAYMENTS

a monthly profile

Note: The Australian Bureau of Statistics (ABS) produces the official unemployment statistics. The figures contained in this publication are different from the ABS unemployment figures as the ABS and the Department of Education, Employment and Workplace Relations (DEEWR) use different definitions to identify the unemployed and different methods of counting (see the Appendix for more information).

This publication can be found at <http://www.workplace.gov.au/lmrp>

February 2009

Embargoed
Until 11.30 am, 25 March 2009

Annual Subscription - \$65.00

CONTENTS

	<i>Page</i>
Introduction	1
Statistical Highlights	2
Tables	
1. Labour Market Payments - Time Series	3
2. Newstart Allowees - Derivation of the job seeker population	4
3. Youth Allowees (other) - Derivation of the job seeker population	5
4. Job seekers receiving Newstart Allowance and Youth Allowance (other) - Time Series	6
5. Job seekers receiving Newstart Allowance and Youth Allowance (other) by State	7
6. Job seekers receiving Newstart Allowance and Youth Allowance (other) by Age and Sex	8
7. Job seekers receiving Newstart Allowance and Youth Allowance (other) by Area Support Office and Customer Service Centre	9
8. Job seekers receiving Newstart Allowance and Youth Allowance (other) by Fortnightly Earnings and Sex	23
Explanatory Notes	24
Glossary	30
Appendix	33
For More Information	36

INTRODUCTION

This publication presents statistical information on a monthly basis for the various types of labour market payments delivered by Centrelink on behalf of the Department of Education, Employment and Workplace Relations (DEEWR). This publication was produced previously by the Department of Employment and Workplace Relations (DEWR).

This publication covers NSA and YA(o) in some detail, and to a lesser extent, MAA, PA, WA, YA(FTS) and YA (Australian Apprentices).

Table 1 provides information on the total number of NSA and YA recipients. The YA population is broken down into YA(o), YA(FTS) and YA(Australian Apprentices) categories. The total numbers of MAA, PA and WA recipients are also provided in this table.

Tables 2 and 3 show the derivation of the NSA and YA(o) job seeker populations (see the reference to job seekers in the 'Comparability of data' section of the Explanatory Notes). These populations are added together to derive the total number of job seekers.

Tables 4 to 8 provide information on the total job seeker population.

When using time series figures, it is important to note that changes have occurred over time to the conditions of eligibility for different payments. Details of these changes are provided in the Explanatory Notes.

All media inquiries should be directed to the Centrelink National Media Officer on (02) 6155 0067. For more general inquiries regarding further statistical information please refer to the last page of this publication for other contact details.

The next issue of this publication is scheduled for release on 22 April 2009.

STATISTICAL HIGHLIGHTS – February 2009

Between February 2008 and February 2009:

Total Newstart Allowance (NSA) and Youth Allowance (other) (YA(o)) recipients **increased 12.3%** overall from 513,644 to 576,888.

- ◆ NSA recipients increased 12.2% from 443,916 to 498,020; and
- ◆ YA(o) recipients increased 13.1% from 69,728 to 78,868.

The number of job seekers **increased 14.6%** overall from 320,926 to 367,925.

- ◆ NSA job seekers increased 14.7% from 264,704 to 303,552; and
- ◆ YA(o) job seekers increased 14.5% from 56,222 to 64,373.

Long-term job seekers decreased 4.9% from 173,316 to 164,752.

Short-term job seekers increased 37.6% from 147,610 to 203,173.

For comparisons between DEEWR unemployment labour market payment numbers and ABS labour force unemployment statistics, see Appendix.

**Newstart Allowance and Youth Allowance (other)
February 2007 to February 2009**

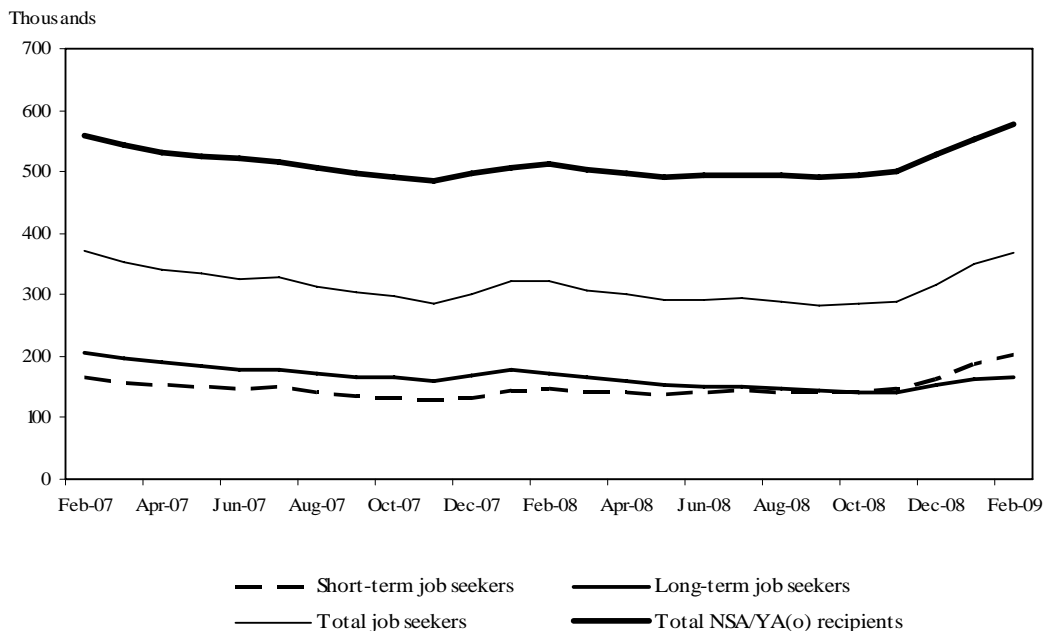


TABLE 1 - LABOUR MARKET PAYMENTS - TIME SERIES (a)

	Newstart Allowance		Youth Allowance			Mature Age Allowance	Partner Allowance	Widow Allowance
	Long-term (b)	Total	Other	Full-time Students (c)	Australian Apprentices (d)			
February 1994 (e)	472,785	977,796
February 2007	286,113	481,343	76,036	223,780	3,715	7,287	51,251	42,370
March 2007	281,937	473,278	71,619	239,502	4,087	6,751	50,058	42,032
April 2007	277,688	463,732	68,746	250,660	4,250	6,235	48,912	41,619
May 2007	274,568	458,297	67,973	256,805	4,341	5,790	47,896	41,245
June 2007	271,439	452,733	67,852	261,197	4,435	5,284	46,709	40,886
July 2007	269,816	448,833	67,617	256,808	4,416	4,796	45,917	40,735
August 2007	267,972	442,112	63,717	263,166	4,490	4,381	45,459	40,853
September 2007	266,180	435,711	62,042	265,669	4,509	3,981	45,058	41,019
October 2007	264,434	429,811	59,920	264,829	4,350	3,619	44,695	41,156
November 2007	261,930	424,168	59,967	249,546	4,093	3,242	44,358	41,278
December 2007	264,127	428,962	69,320	215,158	3,956	2,868	43,997	41,400
January 2008	266,199	437,918	69,709	206,509	3,746	2,518	43,434	41,297
February 2008	266,368	443,916	69,728	213,384	3,897	2,149	42,512	41,014
March 2008	263,759	438,786	65,889	227,301	4,094	1,797	41,528	40,729
April 2008	260,541	433,674	63,680	236,930	4,274	1,503	40,708	40,503
May 2008	257,363	429,363	63,395	245,421	4,419	1,166	39,804	40,124
June 2008	255,550	428,896	63,972	252,180	4,444	856	38,915	39,702
July 2008	254,723	429,989	65,514	248,493	4,402	586	38,109	39,321
August 2008	253,131	429,459	63,347	254,853	4,256	307	37,226	38,946
September 2008	251,987	429,426	62,832	258,973	4,018	47	36,411	38,640
October 2008	251,529	431,546	62,227	259,337	3,882	0	35,572	38,375
November 2008	251,170	437,270	64,053	247,471	3,683	0	34,733	38,142
December 2008	254,327	453,485	74,786	218,371	3,665	0	34,011	37,989
January 2009	258,403	475,183	76,613	208,624	3,506	0	33,234	37,753
February 2009	261,232	498,020	78,868	218,999	3,570	0	32,480	37,561
<i>Variation January 2009 - February 2009</i>								
Number	2,829	22,837	2,255	10,375	64	0	-754	-192
Per cent	1.1	4.8	2.9	5.0	1.8	0.0	-2.3	-0.5

(a) This table presents data using the revised method of measuring the number of people receiving labour market payments introduced in July 2002. Revised historical data from May 1998 to June 2002 is in Table A (May 1998 - June 2000) and Table 1 (July 2000 - July 2002) of July 2002 publication.

(b) Long-term Newstart allowees are persons who have been receiving income support for 12 months or more.

(c) The number of full time students does not include those who have traded in their entire Youth Allowance entitlement for a loan under the Student Financial Supplement Loan Scheme. The Government announced on 24 April 2003 that no further loans would be issued under this Scheme from 1 January 2004. For further details, refer to the Explanatory Notes at the back of this publication.

(d) Australian Apprenticeships combine employment with structured training to provide a nationally recognised qualification. Australian Apprentices enter formal agreements known as either 'Training Agreements' or 'Contracts of Training' which set out the relationship between the employer and the Australian Apprentice and their respective rights and responsibilities.

(e) February 1994 data has been included for comparison purposes due to the peak in the number of persons receiving JSA/NSA at this point in time.

Notes:

- Most of the figures in this publication are averages and have been rounded. As a result, discrepancies may occur between sums of component items and totals, and in the calculation of variations.

TABLE 2 - NEWSTART ALLOWEES - DERIVATION OF THE JOB SEEKER POPULATION

	January 2009	February			Variation January - February	
		Males	Females	Persons	Number	Per cent
Short-term NSA Customers	216,780	154,244	82,544	236,788	20,008	9.2
CPS recipients (a)	2,357	1,776	611	2,387	30	1.3
Did not receive a payment (b)	5,347	4,573	3,720	8,293	2,946	55.1
Received a payment	209,076	147,895	78,213	226,108	17,032	8.1
Incapacitated (c)	18,139	11,040	7,260	18,300	161	0.9
Training	13,672	9,619	5,031	14,650	978	7.2
Self-employment development (d)	361	286	235	521	160	44.3
Voluntary/part-time work (e)	5,663	1,903	3,746	5,649	-14	-0.2
Other/temporary exemptions (f)	15,847	9,688	7,123	16,811	964	6.1
Short-term NSA job seekers (g)	155,394	115,359	54,818	170,177	14,783	9.5
Long-term NSA Customers	258,403	149,404	111,828	261,232	2,829	1.1
CPS recipients (a)	6,196	4,204	2,005	6,209	13	0.2
Did not receive a payment (b)	4,440	2,709	3,400	6,109	1,669	37.6
Received a payment	247,767	142,491	106,423	248,914	1,147	0.5
Incapacitated (c)	16,606	8,631	7,678	16,309	-297	-1.8
Training	53,170	32,632	21,093	53,725	555	1.0
Self-employment development (d)	104	94	68	162	58	55.8
Voluntary/part-time work (e)	17,306	7,950	9,284	17,234	-72	-0.4
Other/temporary exemptions (f)	27,505	16,178	11,931	28,109	604	2.2
Long-term NSA job seekers (g)	133,076	77,006	56,369	133,375	299	0.2
All NSA Customers	475,183	303,648	194,372	498,020	22,837	4.8
CPS recipients (a)	8,553	5,980	2,616	8,596	43	0.5
Did not receive a payment (b)	9,787	7,282	7,120	14,402	4,615	47.2
Received a payment	456,843	290,386	184,636	475,022	18,179	4.0
Incapacitated (c)	34,745	19,671	14,938	34,609	-136	-0.4
Training	66,842	42,251	26,124	68,375	1,533	2.3
Self-employment development (d)	465	380	303	683	218	46.9
Voluntary/part-time work (e)	22,969	9,853	13,030	22,883	-86	-0.4
Other/temporary exemptions (f)	43,352	25,866	19,054	44,920	1,568	3.6
All NSA job seekers (g)	288,470	192,365	111,187	303,552	15,082	5.2

(a) Persons with NSA eligibility who received CDEP Participant Supplement or add ons while participating in CDEP Projects.

(b) Persons who did not receive a payment due to their income and/or that of their partner. This group is often referred to as zero-paid.

(c) Activity code "incapacitated" relates to NSA recipients who have become temporarily ill or incapacitated.

(d) Those customers exempted from job search while they develop self-employment opportunities.

(e) Those customers undertaking approved full-time voluntary work or combinations of voluntary and part-time work who are not required to seek work.

(f) Includes other customers known not to have job search obligations. See 'Job seekers' in Explanatory Notes.

(g) Those customers who received a payment and generally are required to search for work. These customers form the basis of the population group in Tables 4 - 7.

Notes:

- For information on short-term and long-term categories please refer to the Glossary.

- Most of the figures in this publication are averages and have been rounded. As a result, discrepancies may occur between sums of component items and totals, and in the calculation of variations.

TABLE 3 - YOUTH ALLOWEES (OTHER) - DERIVATION OF THE JOB SEEKER POPULATION

	Variation					
	January 2009	February			January - February	
		Males	Females	Persons	Number	Per cent
Short-term YA (other) Customers	38,295	21,855	18,148	40,003	1,708	4.5
CPS recipients (a)	1,138	702	395	1,097	-41	-3.6
Did not receive a payment (b)	432	260	330	590	158	36.6
Received a payment	36,725	20,893	17,423	38,316	1,591	4.3
Part-time study & work (c)	4	2	4	6	2	50.0
Part-time study & other YA activities (d)	64	27	43	70	6	9.4
Incapacitated (e)	1,709	852	911	1,763	54	3.2
Training	1,535	960	623	1,583	48	3.1
Self-employment development (e)	2	4	5	9	7	350.0
Full-time voluntary work	0	0	0	0	0	0.0
Other non-job seekers (e)	1,815	817	1,072	1,889	74	4.1
Short-term YA (other) job seekers (f)	31,596	18,231	14,765	32,996	1,400	4.4
Long-term YA (other) Customers	38,318	18,379	20,486	38,865	547	1.4
CPS recipients (a)	793	499	291	790	-3	-0.4
Did not receive a payment (b)	628	351	499	850	222	35.4
Received a payment	36,897	17,529	19,696	37,225	328	0.9
Part-time study & work (c)	1	1	2	3	2	200.0
Part-time study & other YA activities (d)	39	20	27	47	8	20.5
Incapacitated (e)	1,133	414	723	1,137	4	0.4
Training	3,173	1,734	1,476	3,210	37	1.2
Self-employment development (e)	2	2	3	5	3	150.0
Full-time voluntary work	0	0	0	0	0	0.0
Other non-job seekers (e)	1,396	553	893	1,446	50	3.6
Long-term YA (other) job seekers (f)	31,153	14,805	16,572	31,377	224	0.7
All YA (other) Customers	76,613	40,234	38,634	78,868	2,255	2.9
CPS recipients (a)	1,931	1,201	686	1,887	-44	-2.3
Did not receive a payment (b)	1,060	611	829	1,440	380	35.8
Received a payment	73,622	38,422	37,119	75,541	1,919	2.6
Part-time study & work (c)	5	3	6	9	4	80.0
Part-time study & other YA activities (d)	103	47	70	117	14	13.6
Incapacitated (e)	2,842	1,266	1,634	2,900	58	2.0
Training	4,708	2,694	2,099	4,793	85	1.8
Self-employment development (e)	4	6	8	14	10	250.0
Full-time voluntary work	0	0	0	0	0	0.0
Other non-job seekers (e)	3,211	1,370	1,965	3,335	124	3.9
All YA (other) job seekers (f)	62,749	33,036	31,337	64,373	1,624	2.6

(a) Persons with YA eligibility who received CDEP Participant Supplement or add ons while participating in CDEP projects.

(b) Persons who did not receive a payment due to their own income and/or that of their partner or parents, where applicable. This group is often referred to as zero-paid.

(c) Those customers undertaking approved part-time study and work who are considered to have a full activity load and are not required to seek work.

(d) Those customers undertaking approved part-time study and other activities who are considered to have a full activity load and are not required to seek work.

(e) These categories are defined in the same way as in Table 2, except that those customers combining these activities with part-time study are classified under part-time study and other activities.

(f) Those customers who received a payment and generally are required to search for work. These customers form the basis of the population group in Tables 4 - 7.

Notes:

- For information on short-term and long-term categories please refer to the Glossary.

- Most of the figures in this publication are averages and have been rounded. As a result, discrepancies may occur between sums of component items and totals, and in the calculation of variations.

TABLE 4 - JOB SEEKERS RECEIVING NEWSTART ALLOWANCE AND YOUTH ALLOWANCE (OTHER)
TIME SERIES (a)

	Short-term	Long-term	Total
February 2007	165,581	205,384	370,965
March 2007	157,827	195,351	353,178
April 2007	153,350	188,871	342,221
May 2007	151,083	183,234	334,317
June 2007	148,602	177,562	326,164
July 2007	149,043	178,467	327,510
August 2007	141,433	171,107	312,540
September 2007	136,186	166,762	302,948
October 2007	132,332	164,716	297,048
November 2007	127,425	159,046	286,471
December 2007	132,454	169,573	302,027
January 2008	145,046	177,005	322,051
February 2008	147,610	173,316	320,926
March 2008	141,568	165,748	307,316
April 2008	139,811	160,030	299,841
May 2008	138,808	154,313	293,121
June 2008	140,066	150,517	290,583
July 2008	143,050	150,831	293,881
August 2008	141,458	146,533	287,991
September 2008	140,447	143,357	283,804
October 2008	142,254	142,368	284,622
November 2008	146,670	141,488	288,158
December 2008	163,109	154,285	317,394
January 2009	186,990	164,229	351,219
February 2009	203,173	164,752	367,925
<i>Variation January 2009 - February 2009</i>			
Number	16,183	523	16,706
Per cent	8.7	0.3	4.8

(a) This table presents data using the revised method of measuring the number of people receiving labour market payment introduced in July 2002. Revised historical data from May 1998 to June 2002 is in Table B of July 2002 publication.

Notes:

- For information on short-term and long-term categories please refer to the Glossary.

- Most of the figures in this publication are averages and have been rounded. As a result, discrepancies may occur between sums of component items and totals, and in the calculation of variations.

**TABLE 5 - JOB SEEKERS RECEIVING NEWSTART ALLOWANCE AND YOUTH ALLOWANCE (OTHER)
BY STATE**

<i>State</i>	January 2009	February 2009	Variation	
			January - February Number	Per cent
SHORT-TERM JOB SEEKERS				
New South Wales	63,592	67,857	4,265	6.7
Victoria	42,539	45,810	3,271	7.7
Queensland	41,271	47,052	5,781	14.0
South Australia	14,698	15,445	747	5.1
Western Australia	15,311	17,041	1,730	11.3
Tasmania	5,129	5,219	90	1.8
Northern Territory	2,876	3,050	174	6.1
Australian Capital Territory	1,574	1,699	125	7.9
AUSTRALIA	186,990	203,173	16,183	8.7
LONG-TERM JOB SEEKERS				
New South Wales	60,903	60,982	79	0.1
Victoria	38,855	38,789	-66	-0.2
Queensland	25,038	25,831	793	3.2
South Australia	15,780	15,580	-200	-1.3
Western Australia	10,306	10,502	196	1.9
Tasmania	6,380	6,203	-177	-2.8
Northern Territory	5,594	5,503	-91	-1.6
Australian Capital Territory	1,373	1,362	-11	-0.8
AUSTRALIA	164,229	164,752	523	0.3
TOTAL JOB SEEKERS				
New South Wales	124,495	128,839	4,344	3.5
Victoria	81,394	84,599	3,205	3.9
Queensland	66,309	72,883	6,574	9.9
South Australia	30,478	31,025	547	1.8
Western Australia	25,617	27,543	1,926	7.5
Tasmania	11,509	11,422	-87	-0.8
Northern Territory	8,470	8,553	83	1.0
Australian Capital Territory	2,947	3,061	114	3.9
AUSTRALIA	351,219	367,925	16,706	4.8

Notes:

- Most of the figures in this publication are averages and have been rounded. As a result, discrepancies may occur between sums of component items and totals, and in the calculation of variations.

**TABLE 6 - JOB SEEKERS RECEIVING NEWSTART ALLOWANCE AND YOUTH ALLOWANCE (OTHER)
BY AGE AND SEX, AS AT FEBRUARY 2009**

Age	Short-term job seekers		Long-term job seekers		Total job seekers	
	Number	Per cent	Number	Per cent	Number	Per cent
MALES						
Less than 18 years	5,460	4.1	3,059	3.3	8,519	3.8
18 - 20 years	12,760	9.6	11,742	12.8	24,502	10.9
21 - 24 years	21,370	16.0	11,176	12.2	32,546	14.4
25 - 29 years	21,802	16.3	11,346	12.4	33,148	14.7
30 - 39 years	32,332	24.2	19,204	20.9	51,536	22.9
40 - 49 years	21,833	16.3	15,552	16.9	37,385	16.6
50 - 59 years	13,049	9.8	12,395	13.5	25,444	11.3
60 years and over	4,986	3.7	7,339	8.0	12,325	5.5
Total	133,592	100.0	91,813	100.0	225,405	100.0
FEMALES						
Less than 18 years	5,154	7.4	3,748	5.1	8,902	6.2
18 - 20 years	9,597	13.8	12,817	17.6	22,414	15.7
21 - 24 years	11,874	17.1	8,993	12.3	20,867	14.6
25 - 29 years	8,368	12.0	6,062	8.3	14,430	10.1
30 - 39 years	11,028	15.8	10,942	15.0	21,970	15.4
40 - 49 years	12,027	17.3	14,603	20.0	26,630	18.7
50 - 59 years	9,060	13.0	12,106	16.6	21,166	14.9
60 years and over	2,473	3.6	3,668	5.0	6,141	4.3
Total	69,581	100.0	72,939	100.0	142,520	100.0
PERSONS						
Less than 18 years	10,614	5.2	6,807	4.1	17,421	4.7
18 - 20 years	22,357	11.0	24,559	14.9	46,916	12.8
21 - 24 years	33,244	16.4	20,169	12.2	53,413	14.5
25 - 29 years	30,170	14.8	17,408	10.6	47,578	12.9
30 - 39 years	43,360	21.3	30,146	18.3	73,506	20.0
40 - 49 years	33,860	16.7	30,155	18.3	64,015	17.4
50 - 59 years	22,109	10.9	24,501	14.9	46,610	12.7
60 years and over	7,459	3.7	11,007	6.7	18,466	5.0
Total	203,173	100.0	164,752	100.0	367,925	100.0

**TABLE 7 - JOB SEEKERS RECEIVING NEWSTART ALLOWANCE AND YOUTH ALLOWANCE
(OTHER) BY AREA SUPPORT OFFICE AND CUSTOMER SERVICE CENTRE**

<i>Area Support Office and Customer Service Centre</i>	January 2009	February 2009	Variation	
			January - February Number	Per cent
<i>SYDNEY EAST NEW SOUTH WALES</i>				
Bankstown	3,455	3,535	80	2.3
Bondi Junction	1,181	1,314	133	11.3
Burwood	1,605	1,706	101	6.3
Campsie	2,506	2,561	55	2.2
Caringbah	1,225	1,336	111	9.1
Chatswood	1,011	1,136	125	12.4
Corrimal	1,191	1,284	93	7.8
Dapto	1,330	1,384	54	4.1
Darlinghurst	1,528	1,657	129	8.4
Darlinghurst CCU	43	40	-3	%
Haymarket	1	1	0	%
Hornsby	882	956	74	8.4
Hurstville	1,381	1,468	87	6.3
Lakemba	23	26	3	%
Leichhardt	1,314	1,401	87	6.6
Maroubra	1,396	1,505	109	7.8
Marrickville	1,419	1,567	148	10.4
Northern Beaches	1,164	1,304	140	12.0
Participation Sydney East	3	2	-1	%
Redfern	1,206	1,282	76	6.3
Revesby	12	8	-4	%
Rockdale	1,388	1,448	60	4.3
Ryde	966	1,065	99	10.2
Shellharbour	1,481	1,553	72	4.9
Sutherland	442	506	64	14.5
Wollongong	1,547	1,586	39	2.5
Other (a)	8	7	-1	%
Total	29,708	31,638	1,930	6.5

Note: For footnotes see end of table.

**TABLE 7 - JOB SEEKERS RECEIVING NEWSTART ALLOWANCE AND YOUTH ALLOWANCE
(OTHER) BY AREA SUPPORT OFFICE AND CUSTOMER SERVICE CENTRE**

<i>Area Support Office and Customer Service Centre</i>	January 2009	February 2009	Variation	
			January - February Number	Per cent
<i>SYDNEY WEST NEW SOUTH WALES</i>				
Auburn	2,157	2,235	78	3.6
Baulkham Hills	776	863	87	11.2
Blacktown	3,069	3,201	132	4.3
Cabramatta	2,052	2,031	-21	-1.0
Camden	703	750	47	6.7
Campbelltown	2,191	2,252	61	2.8
Fairfield	3,008	3,099	91	3.0
Hawkesbury	972	1,007	35	3.6
Ingleburn	1,419	1,480	61	4.3
Katoomba	769	788	19	2.5
Liverpool	3,666	3,762	96	2.6
Merrylands	1,872	1,960	88	4.7
Mt Druitt	2,851	3,047	196	6.9
Parramatta	1,935	2,006	71	3.7
Penrith	1,943	2,028	85	4.4
Springwood	393	423	30	7.6
St Marys	1,533	1,608	75	4.9
Other (a)	15	20	5	%
Total	31,324	32,560	1,236	3.9

Note: For footnotes see end of table.

**TABLE 7 - JOB SEEKERS RECEIVING NEWSTART ALLOWANCE AND YOUTH ALLOWANCE
(OTHER) BY AREA SUPPORT OFFICE AND CUSTOMER SERVICE CENTRE**

<i>Area Support Office and Customer Service Centre</i>	January 2009	February 2009	Variation	
			January - February Number	Per cent
HUNTER NEW SOUTH WALES				
Armidale	978	973	-5	-0.5
Cessnock	897	910	13	1.4
Charlestown	2,020	2,132	112	5.5
Ettalong	1,019	1,099	80	7.9
Glen Innes	260	279	19	7.3
Gosford	1,809	1,837	28	1.5
Gunnedah	432	452	20	4.6
Inverell	710	722	12	1.7
Kempsey	1,030	1,084	54	5.2
Kurri Kurri	454	479	25	5.5
Lakehaven	1,820	1,851	31	1.7
Maitland	1,618	1,643	25	1.5
Mayfield	1,025	980	-45	-4.4
Muswellbrook	532	539	7	1.3
Nambucca Heads	905	932	27	3.0
Nelson Bay	529	544	15	2.8
Newcastle	1,388	1,417	29	2.1
Port Macquarie	1,707	1,718	11	0.6
Raymond Terrace	1,022	1,055	33	3.2
Singleton	308	308	0	0.0
Tamworth	1,829	1,849	20	1.1
Taree	1,892	1,884	-8	-0.4
The Entrance	1,363	1,426	63	4.6
Toronto	1,007	1,038	31	3.1
Tuncurry (Forster)	910	972	62	6.8
Wallsend	1,473	1,485	12	0.8
Wyong	797	807	10	1.3
Other (a)	35	39	4	%
Total	29,769	30,454	685	2.3

Note: For footnotes see end of table.

**TABLE 7 - JOB SEEKERS RECEIVING NEWSTART ALLOWANCE AND YOUTH ALLOWANCE
(OTHER) BY AREA SUPPORT OFFICE AND CUSTOMER SERVICE CENTRE**

<i>Area Support Office and Customer Service Centre</i>	January 2009	February 2009	Variation	
			January - February Number	Per cent
<i>SOUTH WEST NEW SOUTH WALES</i>				
Batemans Bay	909	944	35	3.9
Bathurst	1,042	1,017	-25	-2.4
Bega	790	790	0	0.0
Belconnen	907	952	45	5.0
Bowral	534	554	20	3.7
Braddon	836	819	-17	-2.0
Cooma	345	337	-8	-2.3
Cowra	512	510	-2	-0.4
Dubbo	2,107	2,111	4	0.2
Goulburn	767	769	2	0.3
Griffith	612	591	-21	-3.4
Gungahlin	78	78	0	%
Lanyon	41	38	-3	%
Leeton	381	377	-4	-1.0
Lithgow	589	609	20	3.4
Mudgee	735	725	-10	-1.4
Narooma	399	385	-14	-3.5
Nowra	2,198	2,217	19	0.9
Orange	1,127	1,148	21	1.9
Parkes	992	1,015	23	2.3
Queanbeyan	445	448	3	0.7
Tuggeranong	622	673	51	8.2
Tumut	298	294	-4	-1.3
Ulladulla	540	562	22	4.1
Wagga	1,555	1,584	29	1.9
Woden	444	475	31	7.0
Yass	106	114	8	7.5
Young	487	476	-11	-2.3
Other (a)	13	12	-1	%
Total	20,411	20,624	213	1.0

Note: For footnotes see end of table.

**TABLE 7 - JOB SEEKERS RECEIVING NEWSTART ALLOWANCE AND YOUTH ALLOWANCE
(OTHER) BY AREA SUPPORT OFFICE AND CUSTOMER SERVICE CENTRE**

<i>Area Support Office and Customer Service Centre</i>	January 2009	February 2009	Variation	
			January - February Number	Per cent
<i>NORTH CENTRAL VICTORIA</i>				
Airport West	989	1,035	46	4.7
Albury	2,276	2,301	25	1.1
Box Hill	1,704	1,795	91	5.3
Broadmeadows	3,680	3,862	182	4.9
Camberwell	849	896	47	5.5
Darebin	2,951	3,052	101	3.4
Deniliquin	319	327	8	2.5
Echuca	488	502	14	2.9
Epping	1,831	1,894	63	3.4
Greensborough	35	31	-4	%
Heidelberg	1,420	1,537	117	8.2
Moreland	1,874	2,005	131	7.0
Newmarket	1,173	1,232	59	5.0
Seymour	606	612	6	1.0
Shepparton	2,139	2,105	-34	-1.6
South Melbourne	585	626	41	7.0
Sunbury	738	768	30	4.1
Wangaratta	1,551	1,585	34	2.2
Windsor	2,116	2,268	152	7.2
Yarra	1,725	1,820	95	5.5
Other (a)	11	10	-1	%
Total	29,060	30,263	1,203	4.1

Note: For footnotes see end of table.

**TABLE 7 - JOB SEEKERS RECEIVING NEWSTART ALLOWANCE AND YOUTH ALLOWANCE
(OTHER) BY AREA SUPPORT OFFICE AND CUSTOMER SERVICE CENTRE**

<i>Area Support Office and Customer Service Centre</i>	January 2009	February 2009	Variation	
			January - February Number	Per cent
<i>SOUTH EAST VICTORIA</i>				
Bairnsdale	801	818	17	2.1
Belgrave	417	452	35	8.4
Cheltenham	1,480	1,564	84	5.7
Cranbourne	1,200	1,278	78	6.5
Dandenong	2,490	2,569	79	3.2
Fountain Gate	1,791	1,882	91	5.1
Frankston	2,359	2,483	124	5.3
Glen Waverley	910	995	85	9.3
Hastings	473	501	28	5.9
Lilydale	1,388	1,436	48	3.5
Mornington	436	438	2	0.5
Morwell	2,430	2,413	-17	-0.7
Oakleigh	1,539	1,705	166	10.8
Pakenham	544	584	40	7.4
Ringwood	1,741	1,852	111	6.4
Rosebud	851	848	-3	-0.4
Rowville	387	416	29	7.5
Sale	775	793	18	2.3
Springvale	1,866	1,935	69	3.7
Wantirna	1,117	1,232	115	10.3
Warragul	571	554	-17	-3.0
Wonthaggi	492	515	23	4.7
Other (a)	5	4	-1	%
Total	26,063	27,267	1,204	4.6

Note: For footnotes see end of table.

**TABLE 7 - JOB SEEKERS RECEIVING NEWSTART ALLOWANCE AND YOUTH ALLOWANCE
(OTHER) BY AREA SUPPORT OFFICE AND CUSTOMER SERVICE CENTRE**

<i>Area Support Office and Customer Service Centre</i>	January 2009	February 2009	Variation	
			January - February Number	Per cent
WEST VICTORIA				
Ararat	241	230	-11	-4.6
Ballarat	2,762	2,816	54	2.0
Bendigo	2,588	2,687	99	3.8
Bendigo Central	444	419	-25	-5.6
Colac	475	485	10	2.1
Corio	1,727	1,719	-8	-0.5
Footscray	1,374	1,448	74	5.4
Geelong	2,805	2,905	100	3.6
Hamilton	424	435	11	2.6
Horsham	580	596	16	2.8
Maryborough	444	469	25	5.6
Melton	1,243	1,321	78	6.3
Mildura	1,791	1,772	-19	-1.1
Newport	1,054	1,107	53	5.0
Portland	371	401	30	8.1
Stawell	169	184	15	8.9
Sunshine	2,581	2,649	68	2.6
Swan Hill	841	870	29	3.4
Warrnambool	871	867	-4	-0.5
Watergardens	3,052	3,167	115	3.8
Werribee	2,786	2,917	131	4.7
Other (a)	11	18	7	%
Total	28,634	29,482	848	3.0

Note: For footnotes see end of table.

**TABLE 7 - JOB SEEKERS RECEIVING NEWSTART ALLOWANCE AND YOUTH ALLOWANCE
(OTHER) BY AREA SUPPORT OFFICE AND CUSTOMER SERVICE CENTRE**

<i>Area Support Office and Customer Service Centre</i>	January 2009	February 2009	Variation	
			January - February Number	Per cent
CENTRAL & NORTHERN QUEENSLAND				
Atherton	694	746	52	7.5
Ayr	391	465	74	18.9
Bamaga RASC (Nth Peninsula RASC)	31	29	-2	%
Biloela	162	183	21	13.0
Bowen	392	455	63	16.1
Cairns Families	8	7	-1	%
Cairns Jobseekers	3,450	3,903	453	13.1
Cairns Remote (Indigenous ISC)	638	697	59	9.2
Cairns Seniors & Carers	3	6	3	%
Charters Towers	303	354	51	16.8
Edmonton	1	1	0	%
Emerald	263	283	20	7.6
Gladstone	847	902	55	6.5
Greenfields	2	3	1	%
Ingham	299	355	56	18.7
Innisfail	621	710	89	14.3
Longreach	97	119	22	%
Mackay Jobseekers	1,237	1,459	222	17.9
Mackay Seniors & Carers	2	2	0	%
Mareeba	461	522	61	13.2
Mossman	425	483	58	13.6
Mt Isa	794	904	110	13.9
Normanton	165	169	4	2.4
Palm Island	331	324	-7	-2.1
Rockhampton Families	0	0	0	%
Rockhampton Jobseekers	1,831	1,947	116	6.3
Rockhampton Seniors & Carers	3	2	-1	%
Smithfield	1	2	1	%
Thursday Island	255	273	18	7.1
Townsville City	3	3	0	%
Townsville Families	0	0	0	%
Townsville Jobseekers	2,918	3,430	512	17.5
Townsville Seniors & Carers	5	7	2	%
Western Cape RASC	265	274	9	3.4
Whitsunday	308	427	119	38.6
Yarrabah RASC	363	372	9	2.5
Yeppoon	360	391	31	8.6
Other (a)	96	90	-6	%
Total	18,025	20,299	2,274	12.6

Note: For footnotes see end of the table.

**TABLE 7 - JOB SEEKERS RECEIVING NEWSTART ALLOWANCE AND YOUTH ALLOWANCE
(OTHER) BY AREA SUPPORT OFFICE AND CUSTOMER SERVICE CENTRE**

<i>Area Support Office and Customer Service Centre</i>	January 2009	February 2009	Variation	
			January - February Number	Per cent
<i>SOUTH & EAST QUEENSLAND</i>				
Bundaberg	2,800	3,016	216	7.7
Caboolture	2,127	2,349	222	10.4
Caboolture FCC and SC&R	0	0	0	%
Caloundra	1,018	1,144	126	12.4
Cherbourg	102	82	-20	%
Chermside	944	1,026	82	8.7
Fortitude Valley	1,051	1,155	104	9.9
Gympie	1,219	1,276	57	4.7
Hervey Bay	1,406	1,501	95	6.8
Kawana Waters	496	571	75	15.1
Kingaroy	716	787	71	9.9
Kippa-Ring	892	999	107	12.0
Maroochydore	1,341	1,473	132	9.8
Maryborough	1,157	1,204	47	4.1
Mitchelton	915	1,005	90	9.8
Nambour	943	1,027	84	8.9
Noosa	843	952	109	12.9
Nundah	928	1,035	107	11.5
Strathpine	1,095	1,197	102	9.3
Toowong	783	872	89	11.4
Other (a)	510	569	59	11.6
Total	21,286	23,240	1,954	9.2

Note: For footnotes see end of table.

**TABLE 7 - JOB SEEKERS RECEIVING NEWSTART ALLOWANCE AND YOUTH ALLOWANCE
(OTHER) BY AREA SUPPORT OFFICE AND CUSTOMER SERVICE CENTRE**

<i>Area Support Office and Customer Service Centre</i>	January 2009	February 2009	Variation	
			January - February Number	Per cent
<i>SOUTH & WEST QUEENSLAND</i>				
Beenleigh	1,743	1,886	143	8.2
Browns Plains	1,453	1,614	161	11.1
Capalaba	642	700	58	9.0
Charleville	222	236	14	6.3
Cleveland	762	844	82	10.8
Dalby	452	488	36	8.0
Goodna	1,063	1,170	107	10.1
Goondiwindi	316	309	-7	-2.2
Inala	1,278	1,450	172	13.5
Ipswich	2,082	2,249	167	8.0
Mt Gravatt	1,429	1,583	154	10.8
Roma	155	158	3	1.9
South Brisbane	799	863	64	8.0
Stanthorpe	359	385	26	7.2
Stones Corner	1,354	1,444	90	6.6
Toowoomba	2,044	2,147	103	5.0
Warwick	474	487	13	2.7
Woodridge	1,597	1,697	100	6.3
Wynnum	816	885	69	8.5
Other (a)	12	8	-4	%
Total	19,052	20,603	1,551	8.1

Note: For footnotes see end of table.

**TABLE 7 - JOB SEEKERS RECEIVING NEWSTART ALLOWANCE AND YOUTH ALLOWANCE
(OTHER) BY AREA SUPPORT OFFICE AND CUSTOMER SERVICE CENTRE**

<i>Area Support Office and Customer Service Centre</i>	January 2009	February 2009	Variation	
			January - February Number	Per cent
<i>SOUTH AUSTRALIA</i>				
Berri	983	965	-18	-1.8
Broken Hill	930	922	-8	-0.9
Ceduna	296	309	13	4.4
Coober Pedy	148	157	9	6.1
Currie Street	12	2	-10	%
Elizabeth	2,614	2,604	-10	-0.4
Enfield	1,627	1,624	-3	-0.2
Gawler	1,114	1,145	31	2.8
Glenelg	876	882	6	0.7
Kadina	651	675	24	3.7
Kilkenny	1,680	1,676	-4	-0.2
Marion	2,038	2,108	70	3.4
Modbury	1,739	1,795	56	3.2
Mt Barker	616	651	35	5.7
Mt Gambier	1,252	1,305	53	4.2
Murray Bridge	857	886	29	3.4
Noarlunga	2,775	2,832	57	2.1
Norwood	1,821	1,881	60	3.3
Port Adelaide	1,521	1,544	23	1.5
Port Augusta	742	773	31	4.2
Port Lincoln	692	679	-13	-1.9
Port Pirie	921	920	-1	-0.1
Salisbury	2,506	2,571	65	2.6
Torrensville	1,561	1,568	7	0.4
Victor Harbor	615	647	32	5.2
Whyalla	730	743	13	1.8
Other (a)	37	34	-3	%
Total	31,354	31,898	544	1.7

Note: For footnotes see end of table.

**TABLE 7 - JOB SEEKERS RECEIVING NEWSTART ALLOWANCE AND YOUTH ALLOWANCE
(OTHER) BY AREA SUPPORT OFFICE AND CUSTOMER SERVICE CENTRE**

<i>Area Support Office and Customer Service Centre</i>	January 2009	February 2009	Variation	
			January - February Number	Per cent
WEST AUSTRALIA				
Albany	814	845	31	3.8
Armadale	890	974	84	9.4
Bunbury	1,561	1,618	57	3.7
Busselton	269	298	29	10.8
Cannington	1,393	1,506	113	8.1
Carnarvon	312	333	21	6.7
Cocos Islands	36	33	-3	%
Collie	4	5	1	%
Community Team Perth	101	110	9	8.9
Curtin on Campus SSC	17	19	2	%
Esperance	245	279	34	13.9
Fremantle	1,175	1,248	73	6.2
Fremantle SACC	1	1	0	%
Fremantle SSC	0	0	0	%
Geraldton	1,160	1,233	73	6.3
Gosnells	934	1,026	92	9.9
Innaloo	1,151	1,294	143	12.4
Joondalup	1,365	1,539	174	12.7
Joondalup SACC	2	2	0	%
Joondalup SSC	0	0	0	%
Kalgoorlie	737	802	65	8.8
Karratha	282	295	13	4.6
Laverton RASC	54	58	4	%
Mandurah	1,160	1,295	135	11.6
Meekatharra RASC	172	166	-6	-3.5
Midland	1,856	1,993	137	7.4
Mirrabooka	1,603	1,640	37	2.3
Morley	1,603	1,701	98	6.1
Morley - Dewar Street	1	2	1	%
Morley SSC	0	0	0	%
Newman RASC	188	189	1	0.5
Northam	483	508	25	5.2
Rockingham	1,505	1,660	155	10.3
South Hedland	413	418	5	1.2
Spearwood	899	974	75	8.3
Victoria Park	1,520	1,638	118	7.8
Warwick Grove	655	713	58	8.9
Other (a)	28	25	-3	%
Total	24,589	26,440	1,851	7.5

Note: For footnotes see end of table.

**TABLE 7 - JOB SEEKERS RECEIVING NEWSTART ALLOWANCE AND YOUTH ALLOWANCE
(OTHER) BY AREA SUPPORT OFFICE AND CUSTOMER SERVICE CENTRE**

<i>Area Support Office and Customer Service Centre</i>	January 2009	February 2009	Variation	
			January - February Number	Per cent
TASMANIA				
Bridgewater	646	644	-2	-0.3
Burnie	1,372	1,403	31	2.3
Devonport	1,480	1,389	-91	-6.1
Glenorchy	1,726	1,709	-17	-1.0
Hobart	1,269	1,301	32	2.5
Huonville	395	398	3	0.8
Launceston	3,182	3,142	-40	-1.3
Mowbray	1	1	0	%
Rosny Park	980	986	6	0.6
Sorell	472	472	0	0.0
Other (a)	50	50	0	%
Total	11,573	11,495	-78	-0.7
NORTH AUSTRALIA				
Alice Springs	2,519	2,557	38	1.5
Borroloola RASC	39	34	-5	%
Broome	475	510	35	7.4
Casuarina	810	863	53	6.5
Derby	160	168	8	5.0
Fitzroy Crossing RASC	61	65	4	%
Halls Creek RASC	210	223	13	6.2
Katherine	1,262	1,222	-40	-3.2
Knuckey Street	409	451	42	10.3
Kununurra	256	277	21	8.2
Maningrida	346	328	-18	-5.2
Nhulunbuy	655	639	-16	-2.4
Palmerston	778	853	75	9.6
Tangentyere	82	79	-3	%
Tennant Creek	182	199	17	9.3
Tennant Creek Remote	82	70	-12	%
Tiwi Islands RASC	236	228	-8	-3.4
Top End Remote	742	727	-15	-2.0
Wadeye RASC	288	269	-19	-6.6
Yuendumu RASC	129	128	-1	-0.8
Other (a)	33	30	-3	%
Total	9,754	9,920	166	1.7

Note: For footnotes see end of table.

**TABLE 7 - JOB SEEKERS RECEIVING NEWSTART ALLOWANCE AND YOUTH ALLOWANCE
(OTHER) BY AREA SUPPORT OFFICE AND CUSTOMER SERVICE CENTRE**

<i>Area Support Office and Customer Service Centre</i>	January 2009	February 2009	Variation	
			January - February Number	Per cent
PACIFIC CENTRAL				
Ballina	1,040	1,082	42	4.0
Beaudesert	413	479	66	16.0
Biggera Waters	1,771	1,947	176	9.9
Bourke	528	524	-4	-0.8
Brunswick Heads	605	613	8	1.3
Byron Bay	574	598	24	4.2
Casino	590	601	11	1.9
Coffs Harbour	2,401	2,497	96	4.0
Grafton	1,535	1,592	57	3.7
Lightning Ridge	186	185	-1	-0.5
Lismore	1,709	1,732	23	1.3
Maclean	0	0	0	%
Moree	504	523	19	3.8
Murwillumbah	587	608	21	3.6
Narrabri	365	349	-16	-4.4
Nerang	1,795	1,925	130	7.2
Palm Beach	2,096	2,342	246	11.7
Robina SCR	6	7	1	%
Southport	2,184	2,345	161	7.4
Tweed Heads	1,364	1,468	104	7.6
Walgett	272	282	10	3.7
Other (a)	33	35	2	%
Total	20,558	21,734	1,176	5.7
OTHER				
Centrelink Call Centres (b)	57	59	2	%
Not coded to an area	4	6	2	%
Rounding adjustment (c)	-2	-57	-55	%
AUSTRALIA	351,219	367,925	16,706	4.8

(a) Recipients not coded to a Customer Service Centre.

(b) Job seekers receiving NSA / YA (o) in Centrelink Call Centres which are not counted in the various Area Offices.

(c) Prior to the July 2007 publication, the rounding adjustment was included in the Fairfield CSC.

Notes:

- Where the Customer Service Centre has a population less than 100 in either of the reported months, the monthly percentage variation has been suppressed and replaced with the percentage symbol '%'. .

- Most of the figures in this publication are averages and have been rounded. As a result, discrepancies may occur between sums of component items and totals, and in the calculation of variations.

- From July 2007, new Area Support Office boundaries came into effect. A concordance between the new and old Area structures is provided in Table A in the July 2007 edition of this publication.

**TABLE 8 - JOB SEEKERS RECEIVING NEWSTART ALLOWANCE AND YOUTH ALLOWANCE (OTHER)
FORTNIGHTLY EARNINGS (%) AND SEX (a), FORTNIGHT ENDING 20 FEBRUARY 2009**

<i>Fortnightly Earnings</i>	Short-term job seekers	Long-term job seekers	Total job seekers
MALES			
Did not earn an income	86.2	82.5	84.7
Earned an income	13.8	17.5	15.3
Amount earned			
\$0.01-\$62.00	0.5	0.8	0.6
\$62.01-\$142.00	1.8	2.3	2.0
\$142.01-\$236.00	2.2	2.8	2.5
\$236.01-\$316.00	1.6	2.0	1.8
Over \$316.00	7.7	9.5	8.5
Total	100.0	100.0	100.0
<i>Job seekers receiving NSA and YA (other)</i>	<i>134,939</i>	<i>91,931</i>	<i>226,870</i>
FEMALES			
Did not earn an income	77.2	71.4	74.2
Earned an income	22.8	28.6	25.8
Amount earned			
\$0.01-\$62.00	0.9	1.0	0.9
\$62.01-\$142.00	2.8	3.1	3.0
\$142.01-\$236.00	3.3	3.9	3.6
\$236.01-\$316.00	2.7	3.1	2.9
Over \$316.00	13.2	17.5	15.4
Total	100.0	100.0	100.0
<i>Job seekers receiving NSA and YA (other)</i>	<i>69,836</i>	<i>72,856</i>	<i>142,692</i>
PERSONS			
Did not earn an income	83.1	77.6	80.7
Earned an income	16.9	22.4	19.3
Amount earned			
\$0.01-\$62.00	0.6	0.9	0.7
\$62.01-\$142.00	2.2	2.6	2.4
\$142.01-\$236.00	2.5	3.3	2.9
\$236.01-\$316.00	1.9	2.5	2.2
Over \$316.00	9.6	13.1	11.1
Total	100.0	100.0	100.0
<i>Job seekers receiving NSA and YA (other)</i>	<i>204,775</i>	<i>164,787</i>	<i>369,562</i>

(a) Total figures in this table are different from Tables 2 to 7 because of different methodologies applied. Tables 2 to 7 are based on averages of weekly figures while this table is based on point in time data. See Explanatory Notes for further information.

EXPLANATORY NOTES

Introduction

This publication provides monthly statistical information on DEEWR labour market and related payments delivered by Centrelink. These Explanatory Notes provide details of the scope and methodology of the publication, as well as the policy changes which have affected the data since the publication was introduced in December 1995 by the then Department of Social Security.

Prior to December 1995, this publication was titled the *Monthly Job Search and Newstart Allowance Statistics*.

Scope

The primary focus of the publication is to provide information on unemployed people on Newstart Allowance and Youth Allowance, with a particular focus on the total number of job seekers. The number of people on Mature Age Allowance, Partner Allowance and Widow Allowance are also reported.

Methodology

Data in this publication relate to the average number of people who are both eligible (eg. meet 'unemployed' qualification) and entitled (eg. meet income and assets criteria) to receive a payment calculated over a reference month. Averages are calculated using figures collected for each Friday throughout the reference month.

Table 1 provides information on the total number of unemployed people on Newstart Allowance and Youth Allowance. The Youth Allowance population is split into Youth Allowance (full-time students), Youth Allowance (Australian Apprentices) and Youth Allowance (other) categories. Numbers of people on Mature Age Allowance, Partner Allowance and Widow Allowance are also provided.

Tables 2 and 3 provide a summary of the Newstart Allowance and Youth Allowance (other) populations and show the derivation of the respective job seeker populations (see the reference to job seekers in the Comparability of Data section of these Explanatory Notes). These populations are added together to derive the total number of job seekers. Tables 4 to 8 provide information on the total job seeker population.

The earnings data in Table 8 is derived using a different methodology from that of the other tables in the publication. Table 8 is based on the combined population of job seekers who are eligible for and entitled to receive Newstart Allowance or Youth Allowance (other) at the end of the second last week in the month. Thus, the data obtained from this table will not be directly comparable with those calculated using monthly averages in other tables.

Payment History

Youth Allowance

From 1 July 1998 Youth Allowance was introduced to provide income support to young people, including students, those looking for work, and those who are sick. Youth Allowees may be undertaking full-time study, full-time job search or a combination of approved activities. Some young people will be exempt from the activity test because of their personal circumstances, eg. illness, homelessness or major personal crisis. The Youth Allowance replaced:

- AUSTUDY for 16-24 year olds (and certain 15 year olds);
- Newstart Allowance for 16-20 year olds (and certain 15 year olds);
- Youth Training Allowance for 16-17 year olds (and certain 15 year olds);
- Sickness Allowance for 16-20 year olds (and certain 15 year olds); and
- More-than-minimum rate Family Payment for secondary students aged 16-18 not getting AUSTUDY.

Youth Allowance recipients are subject to the parental means test. Under previous arrangements, unemployed people aged 18 to 20 were not subject to the parental means test, unlike 18 to 20 year old students.

Special provisions applied for 18 to 20 year olds who were already on Newstart or Sickness Allowance at the date of announcement of Youth Allowance, and who remained on payment when Youth Allowance commenced on 1 July 1998. This group were able to remain on their existing payment and retain their existing benefits.

Youth Allowance had a significant downward effect on Newstart Allowance numbers from July 1998 and total job seeker numbers due to the parental means test.

Newstart Allowance

From 1 July 1998, Newstart Allowance for 16-20 year olds (and certain 15 year olds) was replaced by Youth Allowance. Young people aged 18 to 20 years old who were on Newstart or Sickness Allowance at the date of announcement of Youth Allowance and when Youth Allowance commenced on 1 July 1998, were able to remain on Newstart Allowance.

From 20 September 1996, Job Search Allowance and Newstart Allowance were combined into one payment - Newstart Allowance - which was payable to eligible recipients aged 18 years and over and to some people who were in receipt of Job Search Allowance and aged under 18 at 31 December 1994 (see Job Search Allowance).

Prior to 20 September 1996, Newstart Allowance was payable to eligible persons over 18 years who had been registered as unemployed with the Commonwealth Employment Service (CES) for 12 months or more.

<i>Job Search Allowance</i>	<p>From 20 September 1996, the payment was combined with Newstart Allowance to form one payment called Newstart Allowance. All Job Search Allowance recipients were transferred to Newstart Allowance.</p> <p>Prior to 20 September 1996, Job Search Allowance was payable to eligible persons who had been registered as unemployed with the CES for up to 12 months. It was also payable to eligible persons who were in receipt of Job Search Allowance and under 18 years of age at 31 December 1994. Persons aged 15 to 18 years who were not receiving Job Search Allowance prior to 1 January 1995 commenced on Youth Training Allowance.</p>
<i>Sickness Allowance</i>	<p>From 17 March 1996, persons in receipt of Newstart Allowance or Youth Training Allowance who became temporarily incapacitated no longer transferred to Sickness Allowance after 13 weeks. This change had the effect of increasing total Newstart Allowance/Youth Training Allowance figures but did not affect job seeker figures as those recipients who were incapacitated were excluded from the Newstart and Youth Training job seeker populations.</p> <p>Under current arrangements, these recipients remain on their existing payments but are exempt from the activity test for the duration of their medical certificates. People who become unemployed because of illness, and those who suffer a potential loss of income due to sickness, are paid Newstart Allowance because they are unemployed.</p> <p>Sickness Allowance for 16 to 20 year olds (and certain 15 year olds) was replaced by Youth Allowance, which was introduced on 1 July 1998 (see Youth Allowance).</p>
<i>Partner Allowance</i>	<p>From 20 September 2003, Partner Allowance was closed to new claimants. People on Partner Allowance before this date can remain on the allowance while they remain 'current', that is retain eligibility and entitlement for the allowance.</p> <p>From 1 July 1995 Partner Allowance has only been granted to persons who are dependent partners of pensioners and allowees and who were born before 1 July 1955, have no dependent children and have little or no recent workforce experience. Other dependent partners have to qualify for an income support payment in their own right, such as Newstart Allowance.</p> <p>Partner Allowance was introduced in September 1994, and was paid to partners of persons receiving Job Search Allowance, Newstart Allowance, Sickness Allowance or Special Benefit if certain eligibility criteria were satisfied.</p>
<i>Youth Training Allowance</i>	<p>Youth Training Allowance was replaced by Youth Allowance on 1 July 1998 (see Youth Allowance).</p> <p>From 1 January 1995, eligible persons aged under 18 years who were new entrants to the job search pool were paid Youth Training Allowance. (People who were in receipt of Job Search</p>

Allowance and aged under 18 years at 31 December 1994 continued to be paid Job Search Allowance. From 20 September 1996, those young persons still being paid Job Search Allowance were transferred to Newstart Allowance.)

Widow Allowance Widow Allowance, introduced on 1 January 1995, is payable to females aged 50 years or over who have become widowed, divorced or separated since turning 40 years (50 prior to 20 March 1997), if they meet a number of other criteria relating to current marital status and recent work experience. This has had a slight downwards effect on Newstart Allowance numbers from January 1995.

Mature Age Allowance From 20 September 2003, Mature Age Allowance was closed to new claimants. People on Mature Age Allowance before this date can remain on the allowance while they remain 'current', that is retain eligibility and entitlement for the allowance.

From 1 July 1996, the qualification conditions for Mature Age Allowance changed for new claimants. The requirement for 12 months prior receipt of income support was reduced to 9 months for people transferring from Newstart Allowance and removed entirely for people transferring from non-activity tested payments. The requirement to have been registered as unemployed for 9 months was replaced with a requirement to have no recent workforce experience. Reporting of these new claimants commenced from September 1996.

Mature Age Allowance was introduced on 24 March 1994, and was paid to long-term unemployed persons aged 60 years and over (but below Age Pension age) who had been receiving income support for 9 months or more and who were eligible for Newstart Allowance. The introduction of Mature Age Allowance had a downwards effect on Newstart Allowance numbers from April 1994 until September 2003.

Comparability of Data

There have been significant changes to the data presented in this publication due to a number of events. The main changes are:

- the method of counting recipients;
- the inclusion of some CDEP recipients in the total recipient numbers;
- the introduction of Youth Allowance in July 1998;
- the way 'job seeker' is defined; and
- the way duration is calculated.

People using this data to construct time series should note the following comments.

Definition of Recipient From July 2002, the Department of Family and Community Services (FaCS) introduced a new method to more accurately measure the number of people receiving labour market and related payments. For those receiving labour market and related payments, their eligibility and entitlement status is administered by a payment system called Newstart Common Platform System. Within this system recipients who are both eligible and entitled to receive a payment have a determination status of 'current'.

The new method therefore counts these 'current' recipients.

The old method of counting recipients was specified to include all paid recipients - those who received a payment within a given fortnight. As compiled, however, this count excluded, from mid 1998, recipients who received a 'one-off' payment. These can occur, for instance, when a normal payment is interrupted (eg. payment is cancelled and then restored within that pay period) and a portion of the normal payment is paid.

The time series in Tables 1 and 4 reflect the revised method, as does the remainder of the publication. Revised historical data for these time series from May 1998 to June 2002 can be found in the July 2002 publication.

From July 2003 FaCS introduced a more sustainable methodology for this revised recipient count. Due to limitations in available data sources in 2002, the revised recipient count had to be derived through a complicated process. This more sustainable methodology resulted in slight differences from the recipient numbers used in previous editions.

*Community Development
Employment Projects
(CDEP)* From 20 March 2000, eligible participants in CDEP started receiving CDEP participant supplement and other add-ons, such as rent assistance, as part of income support payments. This added a number of new recipients to those eligible for payments reported in this publication.

*Introduction of
Youth Allowance* The sum of the number of Newstart Allowees and Youth Training Allowees prior to July 1998 is broadly comparable with the sum of Newstart Allowees and Youth Allowees (other) after July 1998. There are two main problems in comparing these two series. The first is the exclusion of some 18 to 20 year old unemployed people due to the application of the Youth Allowance parental means test (see the Youth Allowance section under Payment History). The second is the inclusion of Sickness Allowees in the Youth Allowance (other) population.

There is greater comparability between total Newstart Allowance and Youth Training Allowance job seekers prior to July 1998 and total Newstart Allowance and Youth Allowance (other) job seekers after July 1998. This is because the Sickness Allowance group is excluded from the job seeker total. The problem, however, of the exclusion of some recipients through the application of the Youth Allowance parental means test still remains.

Job seekers Prior to July 1998, the job seeker category was defined by excluding all Newstart Allowees who did not receive a payment, recipients who were incapacitated, and those receiving a payment who were undertaking training. Some people who were not required to engage in job search were classified as job seekers, including people undertaking full-time voluntary work, people on jury duty and pregnant women around the time of the birth of their child.

From July 1998, the definition of job seekers has been placed on a sounder conceptual basis. It is now derived for Newstart Allowance and Youth Allowance (other) recipients by excluding all people who did not receive a payment due to their own and/or their partner's income, or where applicable, parental income, and all those known not to be required to search for work. People receiving Intensive Support Customised Assistance under Job Network arrangements are classified as job seekers although they may not always be undertaking job search. These people negotiate their activity agreement with their Job Network member.

The total number of job seekers (comparable to pre-July 1998 estimates) is calculated by adding together the number of job seekers in receipt of Newstart Allowance and Youth Allowance (other) - see the Explanatory Notes on Youth Allowance.

Duration

Following system changes in May 1998, duration has been defined according to the time a recipient spends on income support - short-term recipients are those who have been on income support for up to 12 months and long-term recipients are those who have been on income support for 12 months or more.

Prior to 1998, duration was defined according to the time a recipient was registered as unemployed - short-term recipients were people who were registered as unemployed for up to 12 months and long-term recipients were people who were registered for 12 months or more.

Closure of Mature Age and Partner Allowances

From 20 September 2003, Mature Age Allowance and Partner Allowance were closed to new claimants. People on these allowances before this date can remain on that allowance while they remain 'current', that is retain eligibility and entitlement for the allowance. The majority of people who would previously have claimed these payments will now claim Newstart Allowance.

Symbols

n.a. not available
.. not applicable

GLOSSARY

Activity test status	The activity that a Newstart Allowance or Youth Allowance (other) recipient has agreed to undertake in order to meet the activity test. To satisfy the activity test recipients must be actively seeking and willing to take up work or undertaking activities to improve their employment prospects.
Age	Age in years at time of data collection.
Area Support Office	A Centrelink office that supports a set of Customer Service Centres for a specified area. These are generally not confined to State boundaries.
Community Development Employment Projects (CDEP)	<p>The CDEP programme is administered by the Department of Families, Housing, Community Services and Indigenous Affairs (FaHCSIA) from December 2007 and was previously administered by the Department of Employment and Workplace Relations (DEWR). CDEP provides unemployed Indigenous people with activities designed to meet community needs and which develop participants' skills and improve their employability in order to assist them to move to employment outside the CDEP organisation. These activities can also lead to the development of business enterprises.</p> <p>The CDEP Participant Supplement (CPS) is payable to eligible CDEP participants. It can be paid fortnightly or as a 12 weekly payment.</p>
Customer Service Centre	A Customer Service Centre set within a particular region that provides FaHCSIA, DEEWR and other payments and related information and services to recipients. Customer Service Centres are managed by Area Support Offices.
Did not receive a payment	Persons who did not receive a payment due to their own income and/or that of their partner, or parents, where applicable. This group is often referred to as 'zero paid'.
Eligibility and payment status	Refer to the Methodology entry in the Explanatory Notes.
Fortnightly earnings	Amount of income earned, derived, or received by a person for the person's own use or benefit in the previous fortnight.
Incapacitated	A person on Newstart Allowance or Youth Allowance (other) who has an activity test status indicating they are temporarily ill or incapacitated. Refer to the entry for Sickness Allowance in the Explanatory Notes.
Job seekers	A person on Newstart Allowance or Youth Allowance (other) who would usually be engaged in jobsearch. See Explanatory Notes for definition and history.

Job Search Allowance (JSA)	Up to 20 September 1996, Job Search Allowance was payable to CES eligible persons who had been registered as unemployed with the CES for up to 12 months. From 20 September 1996, the payment was combined with Newstart Allowance to form one payment called Newstart Allowance. See Explanatory Notes for history.
Long-term recipients	Persons on Newstart Allowance or Youth Allowance who have been receiving income support for 12 months or more. Duration of long-term recipients can be reset to zero if they exited from payments for more than 13 weeks.
Mature Age Allowance (MAA)	From 20 September 2003, Mature Age Allowance was closed to new claimants. People on Mature Age Allowance before this date can remain on the allowance while they remain 'current', that is retain eligibility and entitlement for the allowance. Mature Age Allowance, a non-activity-tested payment, is payable to unemployed people aged 60 years and over (but below Age Pension age) with little or no recent workforce experience who meet certain requirements for previous receipt of income support. See Explanatory Notes for history.
Newstart Allowance (NSA)	Newstart Allowance is payable to eligible unemployed persons aged 21 years and over (but below Age Pension age) who satisfy the activity test. See Explanatory Notes for history.
Newstart Common Platform System (NCP)	The Newstart Common Platform System (NCP) was introduced in May 1998. The NCP administers all labour market and related payments. This includes primary payments such as Newstart Allowance, Youth Allowance, Mature Age Allowance, Widow Allowance and Partner Allowance. Other payments on the NCP include Special Benefit, Sickness Allowance, Exceptional Circumstances Relief, Farm Help and Austudy.
Partner Allowance (PA)	<p>From 20 September 2003, Partner Allowance was closed to new claimants. People on Partner Allowance before this date can remain on the allowance while they remain 'current', that is retain eligibility and entitlement for the allowance.</p> <p>Partner Allowance, a non-activity-tested payment, is payable to persons who are dependent partners of pensioners and allowees and who were born before 1 July 1955, have no dependent children and have little or no recent workforce experience. See Explanatory Notes for history.</p>
Short-term recipients	Persons on Newstart Allowance or Youth Allowance who have been receiving income support for less than 12 months. Duration of short-term recipients can be reset to zero if they exited from payments for more than 6 weeks.
States	States and Territories of Australia derived from the postcode of the recipient's residence as held on the Centrelink payment system.

Widow Allowance (WA)	<p>From 1 July 2005 Widow Allowance was closed to new claimants, unless the woman was born on or before 1 July 1955.</p> <p>Widow Allowance, a non-activity tested payment, is payable to females aged 50 years or over who have become widowed, divorced or separated since turning 40 years if they have little or no recent work experience and meet a number of other criteria relating to current marital status. See Explanatory Notes for history.</p>
Youth Training Allowance (YTA)	<p>From 1 January 1995 eligible persons aged under 18 years who were registered as unemployed with the CES were paid Youth Training Allowance. From 1 July 1998, Youth Training Allowance was replaced by Youth Allowance. See Explanatory Notes for history.</p>
Youth Allowance (YA)	<p>Youth Allowance is payable to eligible full-time students aged 16 to 25 years, and to eligible unemployed persons aged 16 to 20 years who satisfy the activity test. Note, there are certain exceptions for some 15 and 25 year olds. See Explanatory Notes for history.</p> <p>Youth Allowees may be undertaking full-time study, full-time job search or a combination of approved activities. Some young people will be exempt from the activity test because of their personal circumstances, eg. illness, homelessness or major personal crisis. See the Explanatory Notes for more information.</p>
Youth Allowance (other)	<p>Youth Allowance recipients who are not full-time students or full-time Australian Apprentices.</p>
Zero paid	<p>See 'Did not receive a payment'.</p>

APPENDIX

COMPARISONS BETWEEN DEEWR UNEMPLOYMENT LABOUR MARKET PAYMENT NUMBERS AND ABS LABOUR FORCE UNEMPLOYMENT STATISTICS

Official statistics	Official unemployment statistics are released by the Australian Bureau of Statistics (ABS). The ABS uses definitions recommended by the International Labour Office which have been accepted internationally as the most appropriate for the compilation of official statistics of unemployment.
ABS definition	The ABS unemployment statistics measure the number of persons who, for a particular reference period, did not undertake any paid work, were actively looking for work and were available to start work.
DEEWR Unemployment Labour Market Payment Statistics	The labour market payment statistics give the number of persons who are both eligible and entitled to receive Newstart Allowance or Youth Allowance (other). The criteria for receipt of these payments do not match those the ABS uses to determine whether a person is classed as unemployed or employed for statistical purposes.
Differences	Care should be taken when comparing the ABS labour force and DEEWR labour market payment data. There are a number of reasons why the two series cannot be directly compared.
<i>Duration</i>	<p>Both DEEWR and the ABS classify long-term duration as over 12 months, but use substantially different definitions of duration:</p> <p>DEEWR measures duration of income support. This includes not just time on unemployment benefits but time on any income support payment.</p> <p>The ABS measures length of time unemployed using their unemployment definition.</p> <p>DEEWR unemployed recipients can have breaks without payment for up to 25 weeks but still be classified as long-term income support recipients:</p> <ul style="list-style-type: none">• Recipients who do not receive a payment due to their earnings can have up to 12 weeks without a payment before they are automatically cancelled. This reduces disincentives to accept short-term work.• Long-term recipients can have another 13 weeks off payment after payment is cancelled and still keep their long-term status if they return to income support. This means they keep access to assistance such as the Employment Entry Payment and the higher payment rate for recipients over 60.

For the ABS statistics, any hours of work for a period as short as two weeks count as a break from unemployment and so are enough to reset a person's unemployment duration.

The difference between these two concepts, together with the fact that DEEWR recipients are able to have ongoing part-time work (see 'employment' below) mean that many unemployed recipients remain classified by DEEWR as long-term recipients when they would be classified as short-term unemployed under the ABS definition.

Seasonal adjustment The ABS produces a seasonally adjusted series. The DEEWR labour market payment numbers data are not seasonally adjusted.

Classification The ABS classifies a person as unemployed if he or she is aged 15 years and over, was not employed during the week before the interview, has actively looked for full-time or part-time work and is available to start work. From February 2004, people who had not actively looked for work because they were waiting to start a job within four weeks are also classified as unemployed.

The Newstart Allowance and Youth Allowance (other) series generally count people who are eligible for and entitled to receive a payment between the ages of 15 years and 64 years in the case of men and 15 to 63 years in the case of women.

Employment Newstart Allowance and Youth Allowance (other) recipients may be employed part-time, but within an income test limit; the ABS classifies a person as "employed" if, among other things, he or she has worked for one hour or more during the survey period.

Timing The timing of collections of the series are different:

- DEEWR reports monthly average numbers of people both eligible for and entitled to receive Newstart Allowance and Youth Allowance (other). These monthly averages are calculated using figures collected for each Friday throughout the reference month.
- ABS numbers are based on a sample survey which interviews occupants of selected dwellings covering around 0.27% of the total Australian population. These persons are generally interviewed during the two weeks beginning the Monday between the 6th and 12th of each month and the information obtained relates to the week before the interview takes place.

Treatment of partners The ABS series includes unemployed persons whose spouse is working, irrespective of income, whereas Newstart Allowance and Youth Allowance (other) recipients are subject to an income and assets test for themselves and their spouse.

Pensioners The ABS series includes persons being paid a pension but looking for work (eg. sole parents in receipt of Parenting Payments looking for work).

<i>Non job seekers</i>	The overall Newstart Allowance and Youth Allowance (other) series includes persons who are not required to undertake jobsearch. These persons are separately identified in Tables 2 and 3, and have then been excluded in subsequent tables. These people may be undertaking training, the development of self-employment opportunities, full-time voluntary work or a combination of voluntary and part-time work which excludes them from jobsearch obligations. They may also be incapacitated or have another temporary exemption from jobsearch.
<i>Waiting periods</i>	The ABS series includes persons who are serving a waiting period before being granted Newstart Allowance or Youth Allowance (other), or whose allowance was deferred.
<i>Survey</i>	The ABS figures are derived from a Labour Force Survey which is a sample survey, whereas the DEEWR statistics are a complete count of those both eligible for and entitled to receive Newstart Allowance and Youth Allowance (other).

FOR MORE INFORMATION

Labour market information

Other statistics on recipients of labour market related payments are available on request.

In addition to Newstart and Youth Allowances, statistics are also available on Partner Allowance, Mature Age Allowance and Widow Allowance.

For publication distribution enquiries email:
REGULAR.REPORTING@centrelink.gov.au

Written correspondence concerning this publication or statistics on labour market related payments should be addressed to:

Director
Income Support Information Section
Working Age Payment Programs Branch
Income Support and Stakeholder Group
Department of Education, Employment and Workplace Relations
PO Box 9879
Canberra Mail Centre ACT 2601

or forwarded via facsimile to (02) 6275 3328.

Other recipient information

Statistics relating to other recipients are also available, including recipient numbers and characteristics for the various FaHCSIA pensions, benefits and family payments.

Other statistical outputs

The following statistical outputs are available on request:

Department of Families, Housing, Community Services and Indigenous Affairs (FaHCSIA)
Income Support Customers: a Statistical Overview
1996, 1997, 1998, 1999, 2000, 2001, 2002, 2003 and 2004.