

LABOUR MARKET AND RELATED PAYMENTS

a monthly profile

Note: The Australian Bureau of Statistics (ABS) produces the official unemployment statistics. The figures contained in this publication are different from the ABS unemployment figures as the ABS and the Department of Employment and Workplace Relations (DEWR) use different definitions to identify the unemployed and different methods of counting (see the Appendix for more information).

This publication was produced previously by the Department of Families, Community Services and Indigenous Affairs (FaCSIA) and since October 2004 by DEWR.

This publication can be found at <http://www.workplace.gov.au/lmrp>

January 2007

Embargoed
Until 11.30 am, 21 February 2007

Annual Subscription - \$65.00

CONTENTS

| | <i>Page</i> |
|--|-------------|
| Introduction | 1 |
| Statistical Highlights | 2 |
| Tables | |
| 1. Labour Market Payments - Time Series | 3 |
| 2. Newstart Allowees - Derivation of the job seeker population | 4 |
| 3. Youth Allowees (other) - Derivation of the job seeker population | 5 |
| 4. Job seekers receiving Newstart Allowance and Youth Allowance (other) - Time Series | 6 |
| 5. Job seekers receiving Newstart Allowance and Youth Allowance (other) by State | 7 |
| 6. Job seekers receiving Newstart Allowance and Youth Allowance (other) by Age and Sex | 8 |
| 7. Job seekers receiving Newstart Allowance and Youth Allowance (other) by Area Support Office and Customer Service Centre | 9 |
| 8. Job seekers receiving Newstart Allowance and Youth Allowance (other) by Fortnightly Earnings and Sex | 23 |
| Explanatory Notes | 24 |
| Glossary | 30 |
| Appendix | 33 |
| For More Information | 36 |

INTRODUCTION

This publication presents statistical information on a monthly basis for the various types of labour market payments delivered by Centrelink largely on behalf of the Department of Employment and Workplace Relations (DEWR).

After the Machinery of Government (MOG) changes, announced in October 2004, responsibility for Newstart Allowance (NSA), Youth Allowance (other) (YA(o)), Mature Age Allowance (MAA), Partner Allowance (PA) and Widow Allowance (WA) was transferred to DEWR and responsibility for Youth Allowance (full-time students) (YA(FTS)) was transferred to the Department of Education, Science and Training (DEST).

This publication covers NSA and YA(o) in some detail and, to a lesser extent, MAA, PA, WA, YA(FTS) and YA (Australian Apprentices).

Table 1 provides information on the total number of NSA and YA recipients. The YA population is broken down into YA(o), YA(FTS) and YA(Australian Apprentices) categories. The total numbers of MAA, PA and WA recipients are also provided in this table.

Tables 2 and 3 show the derivation of the NSA and YA(o) job seeker populations (see the reference to job seekers in the 'Comparability of data' section of the *Explanatory Notes*). These populations are added together to derive the total number of job seekers.

Tables 4 to 8 provide information on the total job seeker population.

When using time series figures, it is important to note that changes have occurred over time to the conditions of eligibility for different payments. Details of these changes are provided in the *Explanatory Notes*.

All media inquiries should be directed to the Centrelink National Media Officer on (02) 6284 6442. For more general inquiries regarding further statistical information please refer to the last page of this publication for other contact details.

The next issue of this publication is scheduled for release on 28 March 2007.

STATISTICAL HIGHLIGHTS – January 2007

Between January 2006 and January 2007:

Total Newstart Allowance (NSA) recipients and Youth Allowance (other) (YA(o)) recipients **decreased by 3.1%** overall from 572,879 to 555,391 and

- ◆ decreased 1.9% for NSA from 487,251 to 478,033 and
- ◆ decreased 9.7% for YA(o) from 85,628 to 77,358.

The number of job seekers **decreased by 6.8%** overall from 402,732 to 375,319 and

- ◆ decreased 5.8% for NSA recipients from 332,614 to 313,313 and
- ◆ decreased 11.6% for YA(o) recipients from 70,118 to 62,006.

Long-term job seekers decreased by 8.7% from 229,230 to 209,395.

Short-term job seekers decreased by 4.4% from 173,502 to 165,924.

For comparisons between DEWR unemployment labour market payment numbers and ABS labour force unemployment statistics, see Appendix.

**Newstart Allowance and Youth Allowance (other)
January 2005 to January 2007**

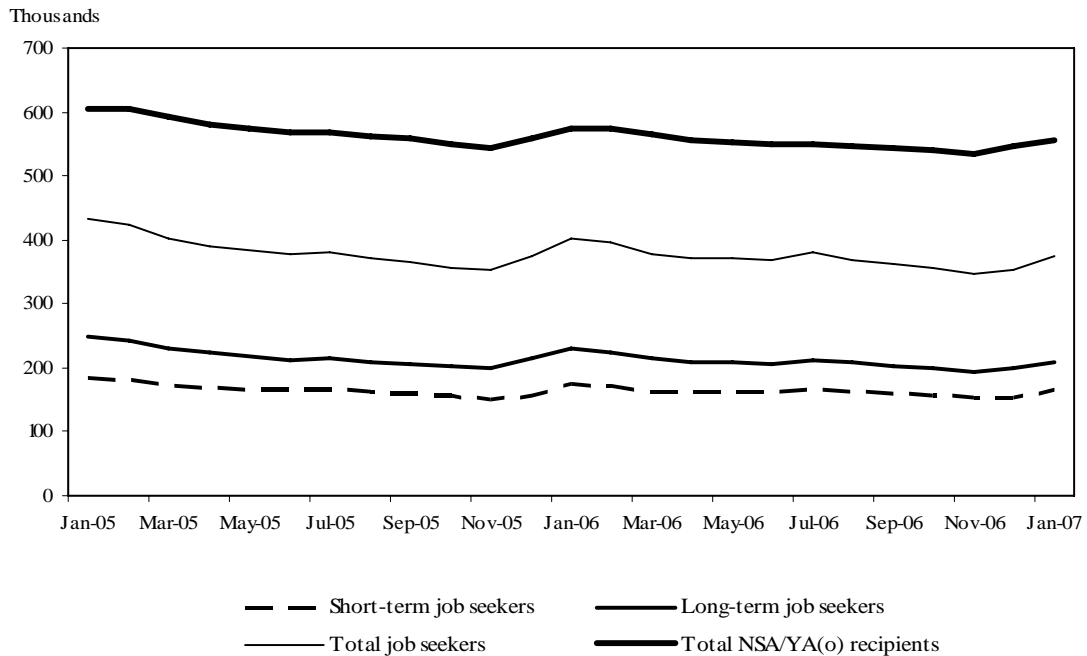


TABLE 1 - LABOUR MARKET PAYMENTS - TIME SERIES (a)

| | Newstart Allowance | | Youth Allowance | | | Mature Age Allowance | Partner Allowance | Widow Allowance |
|---|--------------------|---------|-----------------|------------------------|----------------------------|----------------------|-------------------|-----------------|
| | Long-term (b) | Total | Other | Full-time Students (c) | Australian Apprentices (d) | | | |
| February 1994 (e) | 472,785 | 977,796 | .. | .. | .. | .. | .. | .. |
| January 2005 | 309,214 | 514,579 | 89,453 | 235,537 | .. | 25,770 | 79,482 | 45,206 |
| February 2005 | 307,987 | 516,730 | 87,258 | 245,621 | .. | 24,864 | 78,040 | 45,173 |
| March 2005 | 304,783 | 509,892 | 83,604 | 263,308 | .. | 23,918 | 76,588 | 45,100 |
| April 2005 | 299,698 | 500,391 | 80,661 | 274,240 | .. | 22,935 | 75,014 | 45,009 |
| May 2005 | 295,728 | 494,847 | 79,896 | 281,184 | .. | 22,032 | 73,601 | 44,976 |
| June 2005 | 291,977 | 488,910 | 79,564 | 284,926 | 0 | 21,144 | 72,331 | 44,864 |
| July 2005 | 291,683 | 487,653 | 79,816 | 279,040 | 742 | 20,258 | 71,140 | 44,841 |
| August 2005 | 291,607 | 485,823 | 77,459 | 285,864 | 1,655 | 19,462 | 70,365 | 45,009 |
| September 2005 | 289,974 | 482,072 | 76,272 | 288,479 | 2,285 | 18,697 | 69,624 | 45,158 |
| October 2005 | 287,468 | 475,490 | 72,915 | 280,308 | 2,416 | 17,939 | 68,919 | 45,287 |
| November 2005 | 286,345 | 470,557 | 73,576 | 274,547 | 2,471 | 17,335 | 68,420 | 45,538 |
| December 2005 | 290,391 | 476,028 | 84,022 | 233,273 | 2,486 | 16,623 | 67,762 | 45,830 |
| January 2006 | 294,100 | 487,251 | 85,628 | 223,059 | 2,478 | 15,869 | 66,905 | 45,849 |
| February 2006 | 294,250 | 491,955 | 83,559 | 232,189 | 2,731 | 15,111 | 65,681 | 45,760 |
| March 2006 | 291,020 | 484,784 | 78,913 | 250,079 | 2,994 | 14,271 | 64,282 | 45,622 |
| April 2006 | 288,017 | 479,378 | 76,747 | 260,349 | 3,190 | 13,547 | 62,924 | 45,438 |
| May 2006 | 285,853 | 475,830 | 75,533 | 266,392 | 3,181 | 12,836 | 61,863 | 45,212 |
| June 2006 | 284,288 | 474,125 | 75,366 | 270,081 | 3,323 | 12,110 | 60,829 | 45,096 |
| July 2006 | 285,152 | 474,477 | 76,173 | 264,863 | 3,376 | 11,379 | 59,401 | 44,639 |
| August 2006 | 284,943 | 472,448 | 72,634 | 271,591 | 3,472 | 10,731 | 58,213 | 44,184 |
| September 2006 | 285,218 | 472,222 | 71,104 | 276,235 | 3,643 | 10,049 | 56,965 | 43,705 |
| October 2006 | 284,276 | 470,340 | 69,511 | 277,061 | 3,740 | 9,430 | 55,683 | 43,349 |
| November 2006 | 282,694 | 466,631 | 68,721 | 267,042 | 3,683 | 8,892 | 54,611 | 43,112 |
| December 2006 | 284,499 | 469,233 | 76,480 | 226,902 | 3,571 | 8,293 | 53,398 | 42,903 |
| January 2007 | 286,614 | 478,033 | 77,358 | 216,869 | 3,487 | 7,745 | 52,205 | 42,530 |
| <i>Variation December 2006 - January 2007</i> | | | | | | | | |
| Number | 2,115 | 8,800 | 878 | -10,033 | -84 | -548 | -1,193 | -373 |
| Per cent | 0.7 | 1.9 | 1.1 | -4.4 | -2.4 | -6.6 | -2.2 | -0.9 |

(a) This table presents data using the revised method of measuring the number of people receiving labour market payments introduced in July 2002. Revised historical data from May 1998 to June 2002 is in Table A (May 1998 - June 2000) and Table 1 (July 2000 - July 2002) of July 2002 publication.

(b) Long-term Newstart allowees are persons who have been receiving income support for 12 months or more.

(c) The number of full time students does not include those who have traded in their entire Youth Allowance entitlement for a loan under the Student Financial Supplement Loan Scheme. The Government announced on 24 April 2003 that no further loans would be issued under this Scheme from 1 January 2004. For further details, refer to the Explanatory Notes at the back of this publication.

(d) Australian Apprenticeships combine employment with structured training to provide a nationally recognised qualification. Australian Apprentices enter formal agreements known as either 'Training Agreements' or 'Contracts of Training' which set out the relationship between the employer and the Australian Apprentice and their respective rights and responsibilities.

(e) February 1994 data has been included for comparison purposes due to the peak in the number of persons receiving JSA/NSA at this point in time.

Note: Most of the figures in this publication are averages and have been rounded. As a result, discrepancies may occur between sums of component items and totals, and in the calculation of variations.

TABLE 2 - NEWSTART ALLOWEES - DERIVATION OF THE JOB SEEKER POPULATION

| | December 2006 | January | | | Variation December - January | |
|---------------------------------------|------------------|----------------|----------------|----------------|---------------------------------|------------|
| | | Males | Females | Persons | Number | Per cent |
| Short-term NSA Customers | 184,734 | 125,535 | 65,884 | 191,419 | 6,685 | 3.6 |
| CPS recipients (a) | 3,863 | 2,693 | 1,129 | 3,822 | -41 | -1.1 |
| Did not receive a payment (b) | 11,174 | 4,588 | 3,206 | 7,794 | -3,380 | -30.2 |
| Received a payment | 169,697 | 118,254 | 61,549 | 179,803 | 10,106 | 6.0 |
| Incapacitated (c) | 18,255 | 11,017 | 6,975 | 17,992 | -263 | -1.4 |
| Training | 9,219 | 5,696 | 2,778 | 8,474 | -745 | -8.1 |
| Self-employment development (d) | 508 | 224 | 125 | 349 | -159 | -31.3 |
| Voluntary/part-time work (e) | 2,475 | 1,180 | 1,329 | 2,509 | 34 | 1.4 |
| Other/temporary exemptions (f) | 12,959 | 7,514 | 5,095 | 12,609 | -350 | -2.7 |
| Short-term NSA job seekers (g) | 126,281 | 92,623 | 45,247 | 137,870 | 11,589 | 9.2 |
| Long-term NSA Customers | 284,499 | 177,562 | 109,052 | 286,614 | 2,115 | 0.7 |
| CPS recipients (a) | 8,987 | 6,183 | 2,842 | 9,025 | 38 | 0.4 |
| Did not receive a payment (b) | 10,156 | 3,765 | 3,105 | 6,870 | -3,286 | -32.4 |
| Received a payment | 265,356 | 167,614 | 103,105 | 270,719 | 5,363 | 2.0 |
| Incapacitated (c) | 22,790 | 12,549 | 9,314 | 21,863 | -927 | -4.1 |
| Training | 42,071 | 26,047 | 14,694 | 40,741 | -1,330 | -3.2 |
| Self-employment development (d) | 246 | 106 | 65 | 171 | -75 | -30.5 |
| Voluntary/part-time work (e) | 9,613 | 5,541 | 4,011 | 9,552 | -61 | -0.6 |
| Other/temporary exemptions (f) | 22,699 | 13,856 | 9,093 | 22,949 | 250 | 1.1 |
| Long-term NSA job seekers (g) | 167,937 | 109,515 | 65,928 | 175,443 | 7,506 | 4.5 |
| All NSA Customers (h) | 469,233 | 303,097 | 174,936 | 478,033 | 8,800 | 1.9 |
| CPS recipients (a) | 12,850 | 8,876 | 3,971 | 12,847 | -3 | 0.0 |
| Did not receive a payment (b) | 21,330 | 8,353 | 6,311 | 14,664 | -6,666 | -31.3 |
| Received a payment | 435,053 | 285,868 | 164,654 | 450,522 | 15,469 | 3.6 |
| Incapacitated (c) | 41,045 | 23,566 | 16,289 | 39,855 | -1,190 | -2.9 |
| Training | 51,290 | 31,743 | 17,472 | 49,215 | -2,075 | -4.0 |
| Self-employment development (d) | 754 | 330 | 190 | 520 | -234 | -31.0 |
| Voluntary/part-time work (e) | 12,088 | 6,721 | 5,340 | 12,061 | -27 | -0.2 |
| Other/temporary exemptions (f) | 35,658 | 21,370 | 14,188 | 35,558 | -100 | -0.3 |
| All NSA job seekers (g) | 294,218 | 202,138 | 111,175 | 313,313 | 19,095 | 6.5 |

(a) Persons with NSA eligibility who received CDEP Participant Supplement or add ons while participating in CDEP Projects.

(b) Persons who did not receive a payment due to their income and/or that of their partner. This group is often referred to as zero-paid.

(c) Activity code "incapacitated" relates to NSA recipients who have become temporarily ill or incapacitated.

(d) Those customers exempted from job search while they develop self-employment opportunities.

(e) Those customers undertaking approved full-time voluntary work or combinations of voluntary and part-time work who are not required to seek work.

(f) Includes other customers known not to have job search obligations. See 'Job seekers' in Explanatory Notes.

(g) Those customers who received a payment and generally are required to search for work. These customers form the basis of the population group in Tables 4 - 7.

(h) On 1 July 2006, the Australian Government introduced the Welfare to Work reforms. These reforms impact on the NSA population.

Notes:

- For information on short-term and long-term categories please refer to the Glossary.

- Most of the figures in this publication are averages and have been rounded. As a result, discrepancies may occur between sums of component items and totals, and in the calculation of variations.

TABLE 3 - YOUTH ALLOWEES (OTHER) - DERIVATION OF THE JOB SEEKER POPULATION

| | December 2006 | January | | | Variation December - January | |
|--|------------------|---------------|---------------|---------------|---------------------------------|------------|
| | | Males | Females | Persons | Number | Per cent |
| Short-term YA (other) Customers | 34,735 | 18,636 | 16,543 | 35,179 | 444 | 1.3 |
| CPS recipients (a) | 2,048 | 1,224 | 788 | 2,012 | -36 | -1.8 |
| Did not receive a payment (b) | 758 | 243 | 292 | 535 | -223 | -29.4 |
| Received a payment | 31,929 | 17,169 | 15,463 | 32,632 | 703 | 2.2 |
| Part-time study & work (c) | 3 | 1 | 2 | 3 | 0 | 0.0 |
| Part-time study & other YA activities (d) | 64 | 16 | 32 | 48 | -16 | -25.0 |
| Incapacitated (e) | 1,810 | 839 | 906 | 1,745 | -65 | -3.6 |
| Training | 1,180 | 640 | 399 | 1,039 | -141 | -11.9 |
| Self-employment development (e) | 7 | 2 | 1 | 3 | -4 | -57.1 |
| Full-time voluntary work | 0 | 0 | 0 | 0 | 0 | 0.0 |
| Other non-jobseekers (e) | 1,804 | 741 | 999 | 1,740 | -64 | -3.5 |
| Short-term YA (other) job seekers (f) | 27,061 | 14,930 | 13,124 | 28,054 | 993 | 3.7 |
| Long-term YA (other) Customers | 41,745 | 20,123 | 22,056 | 42,179 | 434 | 1.0 |
| CPS recipients (a) | 1,658 | 1,018 | 664 | 1,682 | 24 | 1.4 |
| Did not receive a payment (b) | 1,078 | 380 | 545 | 925 | -153 | -14.2 |
| Received a payment | 39,009 | 18,725 | 20,847 | 39,572 | 563 | 1.4 |
| Part-time study & work (c) | 2 | 0 | 1 | 1 | -1 | -50.0 |
| Part-time study & other YA activities (d) | 61 | 20 | 27 | 47 | -14 | -23.0 |
| Incapacitated (e) | 1,470 | 549 | 885 | 1,434 | -36 | -2.4 |
| Training | 2,825 | 1,419 | 1,258 | 2,677 | -148 | -5.2 |
| Self-employment development (e) | 3 | 0 | 0 | 0 | -3 | -100.0 |
| Full-time voluntary work | 1 | 0 | 0 | 0 | -1 | -100.0 |
| Other non-jobseekers (e) | 1,540 | 561 | 900 | 1,461 | -79 | -5.1 |
| Long-term YA (other) job seekers (f) | 33,107 | 16,176 | 17,776 | 33,952 | 845 | 2.6 |
| All YA (other) Customers (g) | 76,480 | 38,759 | 38,599 | 77,358 | 878 | 1.1 |
| CPS recipients (a) | 3,706 | 2,242 | 1,452 | 3,694 | -12 | -0.3 |
| Did not receive a payment (b) | 1,836 | 623 | 837 | 1,460 | -376 | -20.5 |
| Received a payment | 70,938 | 35,894 | 36,310 | 72,204 | 1,266 | 1.8 |
| Part-time study & work (c) | 5 | 1 | 3 | 4 | -1 | -20.0 |
| Part-time study & other YA activities (d) | 125 | 36 | 59 | 95 | -30 | -24.0 |
| Incapacitated (e) | 3,280 | 1,388 | 1,791 | 3,179 | -101 | -3.1 |
| Training | 4,005 | 2,059 | 1,657 | 3,716 | -289 | -7.2 |
| Self-employment development (e) | 10 | 2 | 1 | 3 | -7 | -70.0 |
| Full-time voluntary work | 1 | 0 | 0 | 0 | -1 | -100.0 |
| Other non-jobseekers (e) | 3,344 | 1,302 | 1,899 | 3,201 | -143 | -4.3 |
| All YA (other) job seekers (f) | 60,168 | 31,106 | 30,900 | 62,006 | 1,838 | 3.1 |

(a) Persons with YA eligibility who received CDEP Participant Supplement or add ons while participating in CDEP projects.

(b) Persons who did not receive a payment due to their own income and/or that of their partner or parents, where applicable. This group is often referred to as zero-paid.

(c) Those customers undertaking approved part-time study and work who are considered to have a full activity load and are not required to seek work.

(d) Those customers undertaking approved part-time study and other activities who are considered to have a full activity load and are not required to seek work.

(e) These categories are defined in the same way as in Table 2, except that those customers combining these activities with part-time study are classified under part-time study and other activities.

(f) Those customers who received a payment and generally are required to search for work. These customers form the basis of the population group in Tables 4 - 7.

(g) On 1 July 2006, the Australian Government introduced the Welfare to Work reforms. These reforms impact on the YA(o) population.

Notes:

- For information on short-term and long-term categories please refer to the Glossary.

- Most of the figures in this publication are averages and have been rounded. As a result, discrepancies may occur between sums of component items and totals, and in the calculation of variations.

TABLE 4 - JOB SEEKERS RECEIVING NEWSTART ALLOWANCE AND YOUTH ALLOWANCE (OTHER)
TIME SERIES (a)

| | Short-term | Long-term | Total |
|---|------------|-----------|---------|
| January 2005 | 182,718 | 248,933 | 431,651 |
| February 2005 | 180,830 | 241,737 | 422,567 |
| March 2005 | 172,254 | 231,336 | 403,590 |
| April 2005 | 168,095 | 223,258 | 391,353 |
| May 2005 | 167,200 | 217,727 | 384,927 |
| June 2005 | 165,755 | 212,595 | 378,350 |
| July 2005 | 167,154 | 213,585 | 380,739 |
| August 2005 | 162,525 | 209,424 | 371,949 |
| September 2005 | 159,378 | 205,254 | 364,632 |
| October 2005 | 155,525 | 201,678 | 357,203 |
| November 2005 | 151,863 | 200,077 | 351,940 |
| December 2005 | 157,829 | 215,881 | 373,710 |
| January 2006 | 173,502 | 229,230 | 402,732 |
| February 2006 | 173,305 | 224,048 | 397,353 |
| March 2006 | 164,016 | 214,293 | 378,309 |
| April 2006 | 161,900 | 209,435 | 371,335 |
| May 2006 | 162,182 | 207,935 | 370,117 |
| June 2006 | 162,331 | 205,212 | 367,543 |
| July 2006 | 165,898 | 213,281 | 379,179 |
| August 2006 | 161,929 | 207,905 | 369,834 |
| September 2006 | 159,462 | 203,024 | 362,486 |
| October 2006 | 156,815 | 198,967 | 355,782 |
| November 2006 | 152,125 | 193,719 | 345,844 |
| December 2006 | 153,342 | 201,044 | 354,386 |
| January 2007 | 165,924 | 209,395 | 375,319 |
| <i>Variation December 2006 - January 2007</i> | | | |
| Number | 12,582 | 8,351 | 20,933 |
| Per cent | 8.2 | 4.2 | 5.9 |

(a) This table presents data using the revised method of measuring the number of people receiving labour market payment introduced in July 2002. Revised historical data from May 1998 to June 2002 is in Table B of July 2002 publication.

Notes:

- For information on short-term and long-term categories please refer to the Glossary.

- Most of the figures in this publication are averages and have been rounded. As a result, discrepancies may occur between sums of component items and totals, and in the calculation of variations.

**TABLE 5 - JOB SEEKERS RECEIVING NEWSTART ALLOWANCE AND YOUTH ALLOWANCE (OTHER)
BY STATE**

| <i>State</i> | December 2006 | January 2007 | Variation | |
|-------------------------------|------------------|-----------------|------------------------------|------------|
| | | | December - January Number | Per cent |
| SHORT-TERM JOB SEEKERS | | | | |
| New South Wales | 54,535 | 58,344 | 3,809 | 7.0 |
| Victoria | 38,593 | 41,613 | 3,020 | 7.8 |
| Queensland | 28,873 | 32,147 | 3,274 | 11.3 |
| South Australia | 13,057 | 14,258 | 1,201 | 9.2 |
| Western Australia | 10,738 | 11,554 | 816 | 7.6 |
| Tasmania | 4,636 | 4,894 | 258 | 5.6 |
| Northern Territory | 1,673 | 1,783 | 110 | 6.6 |
| Australian Capital Territory | 1,237 | 1,331 | 94 | 7.6 |
| AUSTRALIA | 153,342 | 165,924 | 12,582 | 8.2 |
| LONG-TERM JOB SEEKERS | | | | |
| New South Wales | 72,780 | 76,129 | 3,349 | 4.6 |
| Victoria | 51,684 | 53,960 | 2,276 | 4.4 |
| Queensland | 32,159 | 33,138 | 979 | 3.0 |
| South Australia | 18,117 | 19,160 | 1,043 | 5.8 |
| Western Australia | 12,304 | 12,724 | 420 | 3.4 |
| Tasmania | 8,857 | 8,992 | 135 | 1.5 |
| Northern Territory | 3,327 | 3,403 | 76 | 2.3 |
| Australian Capital Territory | 1,816 | 1,889 | 73 | 4.0 |
| AUSTRALIA | 201,044 | 209,395 | 8,351 | 4.2 |
| TOTAL JOB SEEKERS | | | | |
| New South Wales | 127,315 | 134,473 | 7,158 | 5.6 |
| Victoria | 90,277 | 95,573 | 5,296 | 5.9 |
| Queensland | 61,032 | 65,285 | 4,253 | 7.0 |
| South Australia | 31,174 | 33,418 | 2,244 | 7.2 |
| Western Australia | 23,042 | 24,278 | 1,236 | 5.4 |
| Tasmania | 13,493 | 13,886 | 393 | 2.9 |
| Northern Territory | 5,000 | 5,186 | 186 | 3.7 |
| Australian Capital Territory | 3,053 | 3,220 | 167 | 5.5 |
| AUSTRALIA | 354,386 | 375,319 | 20,933 | 5.9 |

Note: The majority of figures in this publication are averages, and have been rounded. As a result, discrepancies may occur between sums of component items and totals. The discrepancies may also affect the calculation of the variations in Table 2, 3, 5 and 7.

**TABLE 6 - JOB SEEKERS RECEIVING NEWSTART ALLOWANCE AND YOUTH ALLOWANCE (OTHER)
BY AGE AND SEX, AS AT JANUARY 2007**

| Age | Short-term job seekers | | Long-term job seekers | | Total job seekers | |
|--------------------|------------------------|--------------|-----------------------|--------------|-------------------|--------------|
| | Number | Per cent | Number | Per cent | Number | Per cent |
| MALES | | | | | | |
| Less than 18 years | 4,950 | 4.6 | 3,431 | 2.7 | 8,381 | 3.6 |
| 18 - 20 years | 9,980 | 9.3 | 12,744 | 10.1 | 22,724 | 9.7 |
| 21 - 24 years | 17,851 | 16.6 | 15,634 | 12.4 | 33,485 | 14.4 |
| 25 - 29 years | 17,360 | 16.1 | 15,794 | 12.6 | 33,154 | 14.2 |
| 30 - 39 years | 25,753 | 23.9 | 26,123 | 20.8 | 51,876 | 22.2 |
| 40 - 49 years | 16,537 | 15.4 | 22,003 | 17.5 | 38,540 | 16.5 |
| 50 - 59 years | 10,843 | 10.1 | 19,933 | 15.9 | 30,776 | 13.2 |
| 60 years and over | 4,281 | 4.0 | 10,030 | 8.0 | 14,311 | 6.1 |
| Total | 107,555 | 100.0 | 125,692 | 100.0 | 233,247 | 100.0 |
| FEMALES | | | | | | |
| Less than 18 years | 5,135 | 8.8 | 4,082 | 4.9 | 9,217 | 6.5 |
| 18 - 20 years | 7,989 | 13.7 | 13,693 | 16.4 | 21,682 | 15.3 |
| 21 - 24 years | 10,387 | 17.8 | 11,843 | 14.1 | 22,230 | 15.6 |
| 25 - 29 years | 6,656 | 11.4 | 7,413 | 8.9 | 14,069 | 9.9 |
| 30 - 39 years | 8,636 | 14.8 | 10,680 | 12.8 | 19,316 | 13.6 |
| 40 - 49 years | 9,326 | 16.0 | 16,088 | 19.2 | 25,414 | 17.9 |
| 50 - 59 years | 8,224 | 14.1 | 15,765 | 18.8 | 23,989 | 16.9 |
| 60 years and over | 2,016 | 3.5 | 4,139 | 4.9 | 6,155 | 4.3 |
| Total | 58,369 | 100.0 | 83,703 | 100.0 | 142,072 | 100.0 |
| PERSONS | | | | | | |
| Less than 18 years | 10,085 | 6.1 | 7,513 | 3.6 | 17,598 | 4.7 |
| 18 - 20 years | 17,969 | 10.8 | 26,437 | 12.6 | 44,406 | 11.8 |
| 21 - 24 years | 28,238 | 17.0 | 27,477 | 13.1 | 55,715 | 14.8 |
| 25 - 29 years | 24,016 | 14.5 | 23,207 | 11.1 | 47,223 | 12.6 |
| 30 - 39 years | 34,389 | 20.7 | 36,803 | 17.6 | 71,192 | 19.0 |
| 40 - 49 years | 25,863 | 15.6 | 38,091 | 18.2 | 63,954 | 17.0 |
| 50 - 59 years | 19,067 | 11.5 | 35,698 | 17.0 | 54,765 | 14.6 |
| 60 years and over | 6,297 | 3.8 | 14,169 | 6.8 | 20,466 | 5.5 |
| Total | 165,924 | 100.0 | 209,395 | 100.0 | 375,319 | 100.0 |

**TABLE 7 - JOB SEEKERS RECEIVING NEWSTART ALLOWANCE AND YOUTH ALLOWANCE
(OTHER) BY AREA SUPPORT OFFICE AND CUSTOMER SERVICE CENTRE**

| <i>Area Support Office and Customer Service Centre</i> | December 2006 | January 2007 | Variation | |
|--|------------------|-----------------|------------------------------|------------|
| | | | December - January Number | Per cent |
| <i>EAST COAST (SYDNEY)</i> | | | | |
| Bondi Junction | 1,150 | 1,244 | 94 | 8.2 |
| Chatswood | 1,036 | 1,092 | 56 | 5.4 |
| Darlinghurst | 1,568 | 1,643 | 75 | 4.8 |
| Darlinghurst YSU | 64 | 67 | 3 | % |
| Hornsby | 854 | 899 | 45 | 5.3 |
| Leichhardt | 1,393 | 1,497 | 104 | 7.5 |
| Maroubra | 1,235 | 1,318 | 83 | 6.7 |
| Marrickville | 1,436 | 1,536 | 100 | 7.0 |
| Northern Beaches | 944 | 1,044 | 100 | 10.6 |
| Sydney Central YSU | 0 | 0 | 0 | % |
| Other (a) | 16 | 18 | 2 | % |
| Total | 9,696 | 10,358 | 662 | 6.8 |
| <i>EAST COAST (WOLLONGONG)</i> | | | | |
| Caringbah | 1,418 | 1,494 | 76 | 5.4 |
| Corrimal | 1,449 | 1,495 | 46 | 3.2 |
| Dapto | 1,233 | 1,287 | 54 | 4.4 |
| Hurstville | 1,384 | 1,458 | 74 | 5.3 |
| Nowra | 2,274 | 2,353 | 79 | 3.5 |
| Redfern | 1,328 | 1,405 | 77 | 5.8 |
| Rockdale | 1,456 | 1,542 | 86 | 5.9 |
| Shellharbour | 1,513 | 1,572 | 59 | 3.9 |
| Sutherland | 101 | 122 | 21 | 20.8 |
| Ulladulla | 577 | 596 | 19 | 3.3 |
| Wollongong | 1,814 | 1,844 | 30 | 1.7 |
| Other (a) | 28 | 25 | -3 | % |
| Total | 14,575 | 15,193 | 618 | 4.2 |

Note: For footnotes see end of table.

**TABLE 7 - JOB SEEKERS RECEIVING NEWSTART ALLOWANCE AND YOUTH ALLOWANCE
(OTHER) BY AREA SUPPORT OFFICE AND CUSTOMER SERVICE CENTRE**

| <i>Area Support Office and Customer Service Centre</i> | December 2006 | January 2007 | Variation | |
|--|------------------|-----------------|------------------------------|------------|
| | | | December - January Number | Per cent |
| HUNTER NSW | | | | |
| Armidale | 1,328 | 1,412 | 84 | 6.3 |
| Cessnock | 894 | 901 | 7 | 0.8 |
| Charlestown | 2,271 | 2,339 | 68 | 3.0 |
| Ettalong | 1,037 | 1,056 | 19 | 1.8 |
| Forster | 874 | 881 | 7 | 0.8 |
| Gosford* | 1,722 | 1,824 | 102 | 5.9 |
| Gunnedah | 463 | 500 | 37 | 8.0 |
| Inverell | 707 | 734 | 27 | 3.8 |
| Kempsey | 1,311 | 1,381 | 70 | 5.3 |
| Kurri Kurri | 608 | 634 | 26 | 4.3 |
| Lakehaven | 1,737 | 1,857 | 120 | 6.9 |
| Maitland | 1,620 | 1,713 | 93 | 5.7 |
| Mayfield | 1,096 | 1,162 | 66 | 6.0 |
| Muswellbrook | 539 | 557 | 18 | 3.3 |
| Nambucca Heads | 1,065 | 1,117 | 52 | 4.9 |
| Nelson Bay | 542 | 534 | -8 | -1.5 |
| Newcastle | 1,554 | 1,650 | 96 | 6.2 |
| Port Macquarie | 1,846 | 1,946 | 100 | 5.4 |
| Raymond Terrace | 988 | 1,039 | 51 | 5.2 |
| Singleton | 288 | 302 | 14 | 4.9 |
| Tamworth | 1,819 | 1,894 | 75 | 4.1 |
| Taree | 1,814 | 1,905 | 91 | 5.0 |
| The Entrance | 1,249 | 1,348 | 99 | 7.9 |
| Toronto | 1,135 | 1,243 | 108 | 9.5 |
| Wallsend | 1,721 | 1,857 | 136 | 7.9 |
| Wyong | 645 | 688 | 43 | 6.7 |
| Other (a) | 84 | 79 | -5 | % |
| Total | 30,957 | 32,553 | 1,596 | 5.2 |

Note: For footnotes see end of table.

*On 12 May 2003 recipients transferred from Gosford NSS to Gosford CSC.

**TABLE 7 - JOB SEEKERS RECEIVING NEWSTART ALLOWANCE AND YOUTH ALLOWANCE
(OTHER) BY AREA SUPPORT OFFICE AND CUSTOMER SERVICE CENTRE**

| <i>Area Support Office and Customer Service Centre</i> | December 2006 | January 2007 | Variation | |
|--|------------------|-----------------|------------------------------|------------|
| | | | December - January Number | Per cent |
| <i>SOUTH METROPOLITAN NSW</i> | | | | |
| Ashfield | 0 | 0 | 0 | % |
| Bankstown | 3,920 | 4,043 | 123 | 3.1 |
| Burwood* | 1,613 | 1,735 | 122 | 7.6 |
| Cabramatta | 1,975 | 2,115 | 140 | 7.1 |
| Camden | 536 | 595 | 59 | 11.0 |
| Campbelltown | 2,314 | 2,549 | 235 | 10.2 |
| Campsie | 2,323 | 2,500 | 177 | 7.6 |
| Fairfield | 3,611 | 3,812 | 201 | 5.6 |
| Ingleburn | 1,137 | 1,229 | 92 | 8.1 |
| Lakemba | 23 | 18 | -5 | % |
| Liverpool | 3,826 | 4,077 | 251 | 6.6 |
| Revesby | 5 | 6 | 1 | % |
| Strathfield | 0 | 0 | 0 | % |
| Other (a) | 16 | 14 | -2 | % |
| Total | 21,299 | 22,693 | 1,394 | 6.5 |
| <i>WEST NSW</i> | | | | |
| Auburn | 2,351 | 2,483 | 132 | 5.6 |
| Baulkham Hills | 679 | 753 | 74 | 10.9 |
| Blacktown | 2,967 | 3,184 | 217 | 7.3 |
| Hawkesbury | 791 | 832 | 41 | 5.2 |
| Katoomba | 707 | 742 | 35 | 5.0 |
| Lithgow | 749 | 815 | 66 | 8.8 |
| Merrylands | 1,729 | 1,785 | 56 | 3.2 |
| Mt Druitt | 2,436 | 2,581 | 145 | 6.0 |
| Mudgee | 747 | 770 | 23 | 3.1 |
| Parramatta | 1,962 | 2,076 | 114 | 5.8 |
| Penrith | 1,689 | 1,814 | 125 | 7.4 |
| Ryde | 956 | 1,023 | 67 | 7.0 |
| Springwood | 424 | 467 | 43 | 10.1 |
| St Marys | 1,669 | 1,780 | 111 | 6.7 |
| Other (a) | 27 | 26 | -1 | % |
| Total | 19,883 | 21,131 | 1,248 | 6.3 |

Note: For footnotes see end of table.

*Burwood CSC was opened on 24 October 2005 and recipients previously serviced by Ashfield and Strathfield will be serviced in Burwood.

Ashfield and Strathfield CSCs closed on 21 October 2005.

**TABLE 7 - JOB SEEKERS RECEIVING NEWSTART ALLOWANCE AND YOUTH ALLOWANCE
(OTHER) BY AREA SUPPORT OFFICE AND CUSTOMER SERVICE CENTRE**

| <i>Area Support Office and Customer Service Centre</i> | December 2006 | January 2007 | Variation | |
|--|------------------|-----------------|------------------------------|------------|
| | | | December - January Number | Per cent |
| <i>SOUTH WEST NSW</i> | | | | |
| Albury | 2,330 | 2,447 | 117 | 5.0 |
| Batemans Bay | 960 | 974 | 14 | 1.5 |
| Bathurst | 962 | 1,011 | 49 | 5.1 |
| Bega | 785 | 816 | 31 | 3.9 |
| Belconnen | 952 | 1,015 | 63 | 6.6 |
| Bourke | 445 | 459 | 14 | 3.1 |
| Bowral | 530 | 535 | 5 | 0.9 |
| Braddon | 877 | 923 | 46 | 5.2 |
| Cooma | 335 | 315 | -20 | -6.0 |
| Cowra | 531 | 560 | 29 | 5.5 |
| Deniliquin | 286 | 311 | 25 | 8.7 |
| Dubbo | 1,975 | 2,081 | 106 | 5.4 |
| Goulburn | 716 | 777 | 61 | 8.5 |
| Griffith | 562 | 600 | 38 | 6.8 |
| Gungahlin | 88 | 93 | 5 | % |
| Lanyon | 42 | 45 | 3 | % |
| Leeton | 339 | 367 | 28 | 8.3 |
| Narooma | 419 | 409 | -10 | -2.4 |
| Orange | 1,111 | 1,181 | 70 | 6.3 |
| Parkes | 1,030 | 1,111 | 81 | 7.9 |
| Queanbeyan | 432 | 468 | 36 | 8.3 |
| Tuggeranong | 605 | 622 | 17 | 2.8 |
| Tumut | 356 | 370 | 14 | 3.9 |
| Wagga | 1,746 | 1,841 | 95 | 5.4 |
| Woden | 482 | 521 | 39 | 8.1 |
| Yass | 111 | 121 | 10 | 9.0 |
| Young | 417 | 462 | 45 | 10.8 |
| Other (a) | 23 | 34 | 11 | % |
| Total | 19,447 | 20,469 | 1,022 | 5.3 |

Note: For footnotes see end of table.

**TABLE 7 - JOB SEEKERS RECEIVING NEWSTART ALLOWANCE AND YOUTH ALLOWANCE
(OTHER) BY AREA SUPPORT OFFICE AND CUSTOMER SERVICE CENTRE**

| <i>Area Support Office and Customer Service Centre</i> | December 2006 | January 2007 | Variation | |
|--|------------------|-----------------|------------------------------|------------|
| | | | December - January Number | Per cent |
| <i>NORTH-CENTRAL VICTORIA</i> | | | | |
| Box Hill | 1,742 | 1,845 | 103 | 5.9 |
| Broadmeadows | 3,780 | 3,986 | 206 | 5.4 |
| Darebin | 3,522 | 3,811 | 289 | 8.2 |
| Echuca | 515 | 558 | 43 | 8.3 |
| Epping | 1,939 | 2,061 | 122 | 6.3 |
| Greensborough | 1,538 | 1,649 | 111 | 7.2 |
| Heidelberg | 20 | 29 | 9 | % |
| Lilydale | 1,500 | 1,607 | 107 | 7.1 |
| Moreland | 2,461 | 2,704 | 243 | 9.9 |
| Newmarket | 1,619 | 1,723 | 104 | 6.4 |
| Ringwood | 1,687 | 1,825 | 138 | 8.2 |
| Seymour | 639 | 684 | 45 | 7.0 |
| Shepparton | 2,460 | 2,543 | 83 | 3.4 |
| Sth Melbourne | 773 | 805 | 32 | 4.1 |
| Wangaratta | 1,748 | 1,853 | 105 | 6.0 |
| Windsor (VIC) | 2,735 | 2,946 | 211 | 7.7 |
| Yarra* | 2,385 | 2,450 | 65 | 2.7 |
| Other (a) | 29 | 28 | -1 | % |
| Total | 31,092 | 33,107 | 2,015 | 6.5 |

Note: For footnotes see end of table.

* Yarra CSC was opened on 27 June 2005. Recipients previously serviced by Fitzroy and Richmond CSCs have been transferred to Yarra CSC.

**TABLE 7 - JOB SEEKERS RECEIVING NEWSTART ALLOWANCE AND YOUTH ALLOWANCE
(OTHER) BY AREA SUPPORT OFFICE AND CUSTOMER SERVICE CENTRE**

| <i>Area Support Office and Customer Service Centre</i> | December 2006 | January 2007 | Variation | |
|--|------------------|-----------------|------------------------------|------------|
| | | | December - January Number | Per cent |
| <i>SOUTH-EAST VICTORIA</i> | | | | |
| Bairnsdale | 951 | 957 | 6 | 0.6 |
| Belgrave* | 541 | 567 | 26 | 4.8 |
| Camberwell | 995 | 1,095 | 100 | 10.1 |
| Cheltenham | 1,859 | 1,921 | 62 | 3.3 |
| Cranbourne | 1,246 | 1,335 | 89 | 7.1 |
| Dandenong | 2,680 | 2,835 | 155 | 5.8 |
| Fountain Gate | 2,268 | 2,468 | 200 | 8.8 |
| Frankston | 2,944 | 3,150 | 206 | 7.0 |
| Glen Waverley | 948 | 1,065 | 117 | 12.3 |
| Leongatha | 0 | 1 | 1 | % |
| Mornington | 474 | 507 | 33 | 7.0 |
| Morwell | 2,388 | 2,506 | 118 | 4.9 |
| Oakleigh | 1,836 | 1,933 | 97 | 5.3 |
| Rosebud | 889 | 866 | -23 | -2.6 |
| Rowville | 424 | 467 | 43 | 10.1 |
| Sale | 852 | 893 | 41 | 4.8 |
| Springvale | 2,364 | 2,547 | 183 | 7.7 |
| Wantirna* | 1,249 | 1,333 | 84 | 6.7 |
| Warragul | 510 | 535 | 25 | 4.9 |
| Wonthaggi | 673 | 667 | -6 | -0.9 |
| Other (a) | 16 | 16 | 0 | % |
| Total | 26,107 | 27,664 | 1,557 | 6.0 |

Note: For footnotes see end of table.

* Belgrave and Wantirna CSCs were previously included under Knox. Knox no longer exists and has been removed from list.

Belgrave and Wantirna CSCs are shown independently.

**TABLE 7 - JOB SEEKERS RECEIVING NEWSTART ALLOWANCE AND YOUTH ALLOWANCE
(OTHER) BY AREA SUPPORT OFFICE AND CUSTOMER SERVICE CENTRE**

| <i>Area Support Office and Customer Service Centre</i> | December 2006 | January 2007 | Variation | |
|--|------------------|-----------------|------------------------------|------------|
| | | | December - January Number | Per cent |
| WEST VICTORIA | | | | |
| Ararat | 355 | 361 | 6 | 1.7 |
| Ballarat | 2,925 | 3,042 | 117 | 4.0 |
| B Central* | 545 | 550 | 5 | 0.9 |
| Bendigo | 2,679 | 2,898 | 219 | 8.2 |
| Colac | 480 | 485 | 5 | 1.0 |
| Corio | 1,996 | 2,056 | 60 | 3.0 |
| Essendon (Airport West) | 1,240 | 1,321 | 81 | 6.5 |
| Footscray | 1,629 | 1,715 | 86 | 5.3 |
| Geelong | 3,305 | 3,469 | 164 | 5.0 |
| Hamilton | 419 | 426 | 7 | 1.7 |
| Horsham | 808 | 848 | 40 | 5.0 |
| Maryborough (VIC) | 533 | 563 | 30 | 5.6 |
| Melton | 1,036 | 1,114 | 78 | 7.5 |
| Mildura | 1,696 | 1,882 | 186 | 11.0 |
| Newport | 1,143 | 1,186 | 43 | 3.8 |
| Portland | 494 | 529 | 35 | 7.1 |
| Stawell | 213 | 215 | 2 | 0.9 |
| Sunbury | 752 | 806 | 54 | 7.2 |
| Sunshine | 3,046 | 3,164 | 118 | 3.9 |
| Swan Hill | 810 | 866 | 56 | 6.9 |
| Warrnambool | 849 | 894 | 45 | 5.3 |
| Watergardens | 3,445 | 3,586 | 141 | 4.1 |
| Werribee | 2,458 | 2,553 | 95 | 3.9 |
| Other (a) | 30 | 30 | 0 | % |
| Total | 32,886 | 34,559 | 1,673 | 5.1 |

Note: For footnotes see end of table.

*On 10 October 2005 B Central was opened and recipients previously serviced by Bendigo will be serviced in B Central.

**TABLE 7 - JOB SEEKERS RECEIVING NEWSTART ALLOWANCE AND YOUTH ALLOWANCE
(OTHER) BY AREA SUPPORT OFFICE AND CUSTOMER SERVICE CENTRE**

| <i>Area Support Office and Customer Service Centre</i> | December 2006 | January 2007 | Variation | |
|--|------------------|-----------------|------------------------------|------------|
| | | | December - January Number | Per cent |
| BRISBANE | | | | |
| Annerley | 831 | 932 | 101 | 12.2 |
| Bundaberg | 2,574 | 2,816 | 242 | 9.4 |
| Caboolture | 1,888 | 2,038 | 150 | 7.9 |
| Caloundra | 1,027 | 1,043 | 16 | 1.6 |
| Capalaba | 623 | 642 | 19 | 3.0 |
| Chermside | 772 | 898 | 126 | 16.3 |
| Cleveland | 725 | 751 | 26 | 3.6 |
| Fortitude Valley | 1,248 | 1,384 | 136 | 10.9 |
| Gympie | 1,255 | 1,314 | 59 | 4.7 |
| Hervey Bay | 1,146 | 1,189 | 43 | 3.8 |
| Kawana Waters | 505 | 547 | 42 | 8.3 |
| Kingaroy | 747 | 804 | 57 | 7.6 |
| Maroochydore | 1,292 | 1,364 | 72 | 5.6 |
| Maryborough | 1,175 | 1,193 | 18 | 1.5 |
| Mitchelton | 850 | 956 | 106 | 12.5 |
| Mt Gravatt | 1,652 | 1,750 | 98 | 5.9 |
| Nambour | 962 | 1,029 | 67 | 7.0 |
| Noosa | 948 | 987 | 39 | 4.1 |
| Nundah | 1,012 | 1,112 | 100 | 9.9 |
| Redcliffe | 1,393 | 1,525 | 132 | 9.5 |
| Stones Corner | 1,352 | 1,514 | 162 | 12.0 |
| Strathpine | 888 | 938 | 50 | 5.6 |
| Toowong | 814 | 918 | 104 | 12.8 |
| Wynnum | 681 | 733 | 52 | 7.6 |
| Other (a) | 15 | 16 | 1 | % |
| Total | 26,375 | 28,393 | 2,018 | 7.7 |

Note: For footnotes see end of table.

**TABLE 7 - JOB SEEKERS RECEIVING NEWSTART ALLOWANCE AND YOUTH ALLOWANCE
(OTHER) BY AREA SUPPORT OFFICE AND CUSTOMER SERVICE CENTRE**

| <i>Area Support Office and Customer Service Centre</i> | December 2006 | January 2007 | Variation | |
|--|------------------|-----------------|------------------------------|------------|
| | | | December - January Number | Per cent |
| <i>CENTRAL & NORTHERN QUEENSLAND</i> | | | | |
| Atherton | 610 | 611 | 1 | 0.2 |
| Ayr | 301 | 362 | 61 | 20.3 |
| Biloela | 131 | 143 | 12 | 9.2 |
| Bowen | 351 | 414 | 63 | 17.9 |
| Cairns EMS (3) | 2,387 | 2,540 | 153 | 6.4 |
| Cairns FAO (3) | 4 | 6 | 2 | % |
| Cairns Ret (3) | 2 | 4 | 2 | % |
| Charters Towers | 269 | 293 | 24 | 8.9 |
| Edmonton | 0 | 2 | 2 | % |
| Emerald | 271 | 274 | 3 | 1.1 |
| Gladstone | 784 | 811 | 27 | 3.4 |
| Greenfields | 4 | 5 | 1 | % |
| Indigenous ISC (2) | 570 | 558 | -12 | -2.1 |
| Ingham | 261 | 294 | 33 | 12.6 |
| Innisfail | 589 | 621 | 32 | 5.4 |
| Longreach (4) | 92 | 97 | 5 | % |
| Mackay | 1,350 | 1,461 | 111 | 8.2 |
| Mareeba | 402 | 402 | 0 | 0.0 |
| Mossman | 282 | 316 | 34 | 12.1 |
| Mt Isa | 699 | 737 | 38 | 5.4 |
| Normanton | 116 | 126 | 10 | 8.6 |
| Palm Island (2) | 251 | 264 | 13 | 5.2 |
| Rockhampton | 1,875 | 1,946 | 71 | 3.8 |
| Smithfield | 1 | 1 | 0 | % |
| Thursday Is | 145 | 154 | 9 | 6.2 |
| Townsville City (1) | 2 | 4 | 2 | % |
| Townsville Employment Services (1) | 2,532 | 2,676 | 144 | 5.7 |
| Townsville FAO (1) | 8 | 7 | -1 | % |
| Townsville Retirement (1) | 1 | 2 | 1 | % |
| Whitsunday | 298 | 298 | 0 | 0.0 |
| Yarrabah RASC (2) | 182 | 205 | 23 | 12.6 |
| Yeppoon | 358 | 356 | -2 | -0.6 |
| Other (a) | 245 | 276 | 31 | 12.7 |
| Total | 15,373 | 16,266 | 893 | 5.8 |

Note: For footnotes see end of the table.

(1). As of November 2003 the above offices have changed names. Townsville Employment Services was previously known as Aitkenvale (Centrepoint), Townsville FAO was previously known as Ross River (Elizabeth St) and Townsville Retirement was previously known as Willows.

Unemployment benefit recipients are being transferred from Townsville Retirement to Townsville Employment Services. Townsville City is now an access point only and recipients are being transferred within the Townsville area to the appropriate CSCs.

(2). As of 29 March 2004 Cairns YAC is now known as Yarrabah RASC, Cairns Remote is now known as Indigenous ISC and Townsville YSC is now known as Palm Island. Recipients are being transferred from these sites to better service the needs of indigenous and rural recipients.

(3). As of 28 May 2004, Cairns is now known as Cairns EMS, Earville is now known as Cairns FAO and Cairns Grafton St is now known as Cairns Ret.

(4). Longreach CSC was opened on 25 February 2005. Recipients previously serviced by Rockhampton will be serviced in Longreach.

**TABLE 7 - JOB SEEKERS RECEIVING NEWSTART ALLOWANCE AND YOUTH ALLOWANCE
(OTHER) BY AREA SUPPORT OFFICE AND CUSTOMER SERVICE CENTRE**

| <i>Area Support Office and Customer Service Centre</i> | December 2006 | January 2007 | Variation | |
|--|------------------|-----------------|------------------------------|------------|
| | | | December - January Number | Per cent |
| <i>SOUTH AUSTRALIA</i> | | | | |
| Berri | 916 | 988 | 72 | 7.9 |
| Broken Hill | 928 | 980 | 52 | 5.6 |
| Ceduna | 209 | 230 | 21 | 10.0 |
| Cooper Pedy | 144 | 146 | 2 | 1.4 |
| Currie St (Adelaide) | 585 | 647 | 62 | 10.6 |
| Edwardstown | 2,066 | 2,170 | 104 | 5.0 |
| Elizabeth | 2,577 | 2,761 | 184 | 7.1 |
| Enfield | 1,590 | 1,715 | 125 | 7.9 |
| Gawler | 1,197 | 1,309 | 112 | 9.4 |
| Glenelg | 876 | 953 | 77 | 8.8 |
| Kadina | 755 | 794 | 39 | 5.2 |
| Kilkenny | 1,764 | 1,885 | 121 | 6.9 |
| Modbury | 1,923 | 2,086 | 163 | 8.5 |
| Mt Barker | 652 | 714 | 62 | 9.5 |
| Mt Gambier | 1,401 | 1,451 | 50 | 3.6 |
| Murray Bridge | 824 | 910 | 86 | 10.4 |
| Noarlunga | 2,755 | 2,952 | 197 | 7.2 |
| Norwood | 1,694 | 1,820 | 126 | 7.4 |
| Parkside | 0 | 0 | 0 | % |
| Port Adelaide | 1,581 | 1,696 | 115 | 7.3 |
| Port Augusta | 667 | 719 | 52 | 7.8 |
| Port Lincoln | 583 | 609 | 26 | 4.5 |
| Port Pirie | 1,112 | 1,191 | 79 | 7.1 |
| Salisbury | 2,433 | 2,663 | 230 | 9.5 |
| Torrensville | 1,405 | 1,515 | 110 | 7.8 |
| Victor Harbor | 659 | 682 | 23 | 3.5 |
| Whyalla | 853 | 887 | 34 | 4.0 |
| Other (a) | 38 | 50 | 12 | % |
| Total | 32,187 | 34,523 | 2,336 | 7.3 |

Note: For footnotes see end of table.

**TABLE 7 - JOB SEEKERS RECEIVING NEWSTART ALLOWANCE AND YOUTH ALLOWANCE
(OTHER) BY AREA SUPPORT OFFICE AND CUSTOMER SERVICE CENTRE**

| <i>Area Support Office and Customer Service Centre</i> | December 2006 | January 2007 | Variation | |
|--|------------------|-----------------|------------------------------|------------|
| | | | December - January Number | Per cent |
| WESTERN AUSTRALIA | | | | |
| Albany | 819 | 851 | 32 | 3.9 |
| Armadale | 766 | 837 | 71 | 9.3 |
| Bunbury | 1,386 | 1,464 | 78 | 5.6 |
| Busselton (3) | 299 | 301 | 2 | 0.7 |
| Cannington | 1,155 | 1,243 | 88 | 7.6 |
| Carnarvon | 198 | 232 | 34 | 17.2 |
| Centrelink City (2) | 0 | 0 | 0 | % |
| Christmas Island | 17 | 15 | -2 | % |
| Cocos Island | 49 | 50 | 1 | % |
| Collie | 4 | 4 | 0 | % |
| Esperance | 275 | 294 | 19 | 6.9 |
| Fremantle | 1,189 | 1,275 | 86 | 7.2 |
| Geraldton | 1,295 | 1,310 | 15 | 1.2 |
| Gosnells | 775 | 822 | 47 | 6.1 |
| Innaloo | 1,279 | 1,401 | 122 | 9.5 |
| Joondalup | 981 | 1,114 | 133 | 13.6 |
| Kalgoorlie | 519 | 541 | 22 | 4.2 |
| Karratha | 258 | 262 | 4 | 1.6 |
| Mandurah | 1,036 | 1,073 | 37 | 3.6 |
| Midland | 1,525 | 1,622 | 97 | 6.4 |
| Mirrabooka | 1,531 | 1,600 | 69 | 4.5 |
| Morley | 1,525 | 1,555 | 30 | 2.0 |
| Northam | 482 | 499 | 17 | 3.5 |
| Rockingham (1) | 1,268 | 1,365 | 97 | 7.6 |
| South Hedland | 394 | 398 | 4 | 1.0 |
| Spearwood | 767 | 833 | 66 | 8.6 |
| Victoria Park | 1,675 | 1,695 | 20 | 1.2 |
| Warwick Grove | 616 | 690 | 74 | 12.0 |
| Other (a) | 461 | 409 | -52 | -11.3 |
| Total | 22,544 | 23,755 | 1,211 | 5.4 |

Note: For footnotes see end of table.

(1). As of 30 May 2003 Kwinana became a sub office of Rockingham.

(2). From 30 June 2003 processes at Centerlink City, formerly known as Milligan Street, became limited to forms lodgement and quick general enquiries only.

(3). On 14 February 2005 Busselton was established as a full-time office. Recipients previously serviced by Bunbury will be serviced in Busselton.

**TABLE 7 - JOB SEEKERS RECEIVING NEWSTART ALLOWANCE AND YOUTH ALLOWANCE
(OTHER) BY AREA SUPPORT OFFICE AND CUSTOMER SERVICE CENTRE**

| <i>Area Support Office and Customer Service Centre</i> | December 2006 | January 2007 | Variation | |
|--|------------------|-----------------|------------------------------|------------|
| | | | December - January Number | Per cent |
| TASMANIA | | | | |
| Bridgewater | 598 | 604 | 6 | 1.0 |
| Burnie | 1,609 | 1,679 | 70 | 4.4 |
| Devonport | 1,999 | 1,976 | -23 | -1.2 |
| Glenorchy | 1,872 | 1,948 | 76 | 4.1 |
| Hobart | 1,734 | 1,803 | 69 | 4.0 |
| Huonville | 560 | 560 | 0 | 0.0 |
| Launceston | 3,572 | 3,740 | 168 | 4.7 |
| Mowbray | 0 | 0 | 0 | % |
| Rosny Park | 1,067 | 1,082 | 15 | 1.4 |
| Sorell | 525 | 530 | 5 | 1.0 |
| Other (a) | 47 | 51 | 4 | % |
| Total | 13,583 | 13,973 | 390 | 2.9 |
| NORTH AUSTRALIA | | | | |
| Alice Springs | 1,134 | 1,207 | 73 | 6.4 |
| Alice Springs (Remote)* | 0 | 0 | 0 | % |
| Broome | 321 | 323 | 2 | 0.6 |
| Casuarina | 888 | 923 | 35 | 3.9 |
| SSC Nth Australia (1) | 2 | 1 | -1 | % |
| Derby | 95 | 102 | 7 | 7.4 |
| Katherine | 580 | 580 | 0 | 0.0 |
| Knuckey Street | 560 | 566 | 6 | 1.1 |
| Kununurra | 143 | 149 | 6 | 4.2 |
| Nhulunbuy | 183 | 210 | 27 | 14.8 |
| Palmerston | 760 | 773 | 13 | 1.7 |
| Tangentyere | 237 | 241 | 4 | 1.7 |
| Tennant Creek | 158 | 160 | 2 | 1.3 |
| Tennant Creek (Remote) | 49 | 50 | 1 | % |
| Other (a) | 574 | 611 | 37 | 6.4 |
| Total | 5,684 | 5,896 | 212 | 3.7 |

Note: For footnotes see end of table.

* In October 2005, region codes were transferred from Alice Springs (Remote) CSC to Alice Springs CSC.

(1). On 1 July 2006, Casuarina YSC became SSC (Student Services Centre) Nth Australia.

**TABLE 7 - JOB SEEKERS RECEIVING NEWSTART ALLOWANCE AND YOUTH ALLOWANCE
(OTHER) BY AREA SUPPORT OFFICE AND CUSTOMER SERVICE CENTRE**

| <i>Area Support Office and Customer Service Centre</i> | December 2006 | January 2007 | Variation | |
|--|------------------|-----------------|------------------------------|------------|
| | | | December - January Number | Per cent |
| <i>PACIFIC CENTRAL</i> | | | | |
| Ballina | 1,132 | 1,189 | 57 | 5.0 |
| Beaudesert | 376 | 383 | 7 | 1.9 |
| Beenleigh | 1,474 | 1,564 | 90 | 6.1 |
| Biggera Waters | 1,380 | 1,481 | 101 | 7.3 |
| Browns Plains | 1,278 | 1,361 | 83 | 6.5 |
| Brunswick Heads | 557 | 595 | 38 | 6.8 |
| Byron Bay | 662 | 693 | 31 | 4.7 |
| Casino | 655 | 682 | 27 | 4.1 |
| Charleville | 170 | 189 | 19 | 11.2 |
| Coffs Harbour | 2,794 | 2,951 | 157 | 5.6 |
| Dalby | 492 | 498 | 6 | 1.2 |
| Goodna | 1,006 | 1,108 | 102 | 10.1 |
| Goondiwindi | 332 | 352 | 20 | 6.0 |
| Grafton | 1,664 | 1,768 | 104 | 6.3 |
| Inala | 1,145 | 1,292 | 147 | 12.8 |
| Ipswich | 1,928 | 2,073 | 145 | 7.5 |
| Lightning Ridge | 144 | 174 | 30 | 20.8 |
| Lismore | 2,156 | 2,259 | 103 | 4.8 |
| Moree | 568 | 602 | 34 | 6.0 |
| Murwillumbah | 586 | 614 | 28 | 4.8 |
| Narrabri | 406 | 459 | 53 | 13.1 |
| Nerang | 1,454 | 1,571 | 117 | 8.0 |
| Palm Beach | 1,760 | 1,920 | 160 | 9.1 |
| Roma | 145 | 183 | 38 | 26.2 |
| Southport | 1,895 | 2,003 | 108 | 5.7 |
| Stanthorpe | 331 | 361 | 30 | 9.1 |
| Toowoomba | 2,138 | 2,265 | 127 | 5.9 |
| Tweed Heads | 1,429 | 1,500 | 71 | 5.0 |
| Walgett | 271 | 260 | -11 | -4.1 |
| Warwick | 468 | 501 | 33 | 7.1 |
| Woodridge | 1,817 | 1,867 | 50 | 2.8 |
| Other (a) | 33 | 27 | -6 | % |
| Total | 32,646 | 34,745 | 2,099 | 6.4 |

Note: For footnotes see end of table.

**TABLE 7 - JOB SEEKERS RECEIVING NEWSTART ALLOWANCE AND YOUTH ALLOWANCE
(OTHER) BY AREA SUPPORT OFFICE AND CUSTOMER SERVICE CENTRE**

| <i>Area Support Office and Customer Service Centre</i> | December 2006 | January 2007 | Variation | |
|--|------------------|-----------------|------------------------------|------------|
| | | | December - January Number | Per cent |
| <i>CENTRELINK CALL CENTRES*</i> | | | | |
| Adelaide | 0 | 1 | 1 | % |
| Bendigo | 2 | 1 | -1 | % |
| Brisbane | 1 | 1 | 0 | % |
| Bunbury | 0 | 0 | 0 | % |
| Cairns | 1 | 0 | -1 | % |
| Cardiff | 0 | 0 | 0 | % |
| Coffs Harbour | 0 | 0 | 0 | % |
| Geelong | 0 | 0 | 0 | % |
| Gosford | 0 | 0 | 0 | % |
| Hobart | 0 | 0 | 0 | % |
| Illawarra | 1 | 2 | 1 | % |
| Latrobe | 2 | 0 | -2 | % |
| Liverpool | 0 | 0 | 0 | % |
| Maryborough | 0 | 0 | 0 | % |
| Moorabbin | 0 | 0 | 0 | % |
| Moreland | 0 | 0 | 0 | % |
| Newcastle | 0 | 1 | 1 | % |
| Perth | 2 | 4 | 2 | % |
| Port Augusta | 1 | 0 | -1 | % |
| Port Macquarie | 7 | 2 | -5 | % |
| Sydney | 0 | 0 | 0 | % |
| Toowoomba | 0 | 0 | 0 | % |
| Townsville | 2 | 0 | -2 | % |
| Tweed Heads | 4 | 1 | -3 | % |
| Warilla | 0 | 0 | 0 | % |
| Wendouree | 0 | 0 | 0 | % |
| Total | 23 | 13 | -10 | % |
| NOT CODED TO AN AREA | 29 | 28 | -1 | % |
| AUSTRALIA | 354,386 | 375,319 | 20,933 | 5.9 |

(a) Recipients not coded to a Customer Service Centre.

% Monthly variations in percentage terms are not included where the Customer Service Centre has a population less than 100 in both of the reported months.

*Job seekers receiving NSA / YA (o) in the Centrelink Call Centres were previously counted in various Area Offices.

Note: The majority of figures in this publication are averages, and have been rounded. As a result, discrepancies may occur between sums of component items and totals. The discrepancies may also affect the calculation of the variations in Table 2, 3, 5 and 7.

**TABLE 8 - JOB SEEKERS RECEIVING NEWSTART ALLOWANCE AND YOUTH ALLOWANCE (OTHER)
FORTNIGHTLY EARNINGS (%) AND SEX (a), FORTNIGHT ENDING 19 JANUARY 2007**

| <i>Fortnightly Earnings</i> | Short-term job seekers | Long-term job seekers | Total job seekers |
|---|------------------------|-----------------------|-------------------|
| MALES | | | |
| Did not earn an income | 86.8 | 83.9 | 85.2 |
| Earned an income | 13.2 | 16.1 | 14.8 |
| Amount earned | | | |
| \$0.01-\$62.00 | 0.7 | 1.0 | 0.9 |
| \$62.01-\$142.00 | 2.3 | 2.9 | 2.6 |
| \$142.01-\$236.00 | 2.4 | 3.1 | 2.8 |
| \$236.01-\$316.00 | 1.6 | 2.0 | 1.8 |
| Over \$316.00 | 6.2 | 7.2 | 6.7 |
| Total | 100.0 | 100.0 | 100.0 |
| <i>Job seekers receiving NSA and YA (other)</i> | 108,720 | 125,581 | 234,301 |
| FEMALES | | | |
| Did not earn an income | 78.2 | 74.6 | 76.1 |
| Earned an income | 21.8 | 25.4 | 23.9 |
| Amount earned | | | |
| \$0.01-\$62.00 | 1.1 | 1.5 | 1.3 |
| \$62.01-\$142.00 | 3.2 | 3.7 | 3.5 |
| \$142.01-\$236.00 | 3.6 | 4.3 | 4.0 |
| \$236.01-\$316.00 | 2.5 | 3.1 | 2.8 |
| Over \$316.00 | 11.3 | 12.9 | 12.3 |
| Total | 100.0 | 100.0 | 100.0 |
| <i>Job seekers receiving NSA and YA (other)</i> | 58,948 | 83,597 | 142,545 |
| PERSONS | | | |
| Did not earn an income | 83.8 | 80.1 | 81.8 |
| Earned an income | 16.2 | 19.9 | 18.2 |
| Amount earned | | | |
| \$0.01-\$62.00 | 0.8 | 1.2 | 1.0 |
| \$62.01-\$142.00 | 2.6 | 3.2 | 2.9 |
| \$142.01-\$236.00 | 2.8 | 3.6 | 3.2 |
| \$236.01-\$316.00 | 1.9 | 2.4 | 2.2 |
| Over \$316.00 | 8.0 | 9.5 | 8.8 |
| Total | 100.0 | 100.0 | 100.0 |
| <i>Job seekers receiving NSA and YA (other)</i> | 167,668 | 209,178 | 376,846 |

(a) Total figures in this table are different from Tables 2 to 7 because of different methodologies applied. Tables 2 to 7 are based on averages of weekly figures while this table is based on point in time data. See Explanatory Notes for further information.

EXPLANATORY NOTES

Introduction

This publication provides monthly statistical information on DEWR labour market and related payments administered by Centrelink. These Explanatory Notes provide details of the scope and methodology of the publication, as well as the policy changes which have affected the data since the publication was introduced in December 1995 by the then Department of Social Security (which became FaCS in October 1998).

Prior to December 1995, this publication was titled the *Monthly Job Search and Newstart Allowance Statistics*.

Scope

The primary focus of the publication is to provide information on unemployed people on Newstart Allowance and Youth Allowance, with a particular focus on the total number of job seekers. The number of people on Mature Age Allowance, Partner Allowance and Widow Allowance are also reported.

Methodology

Data in this publication relate to the average number of people who are both eligible (eg. meet 'unemployed' qualification) and entitled (eg. meet income and assets criteria) to receive a payment calculated over a reference month. Averages are calculated using figures collected for each Friday throughout the reference month.

Table 1 provides information on the total number of unemployed people on Newstart Allowance and Youth Allowance. The Youth Allowance population is split into Youth Allowance (full-time students), Youth Allowance (Australian Apprentices) and Youth Allowance (other) categories. Numbers of people on Mature Age Allowance, Partner Allowance and Widow Allowance are also provided.

Tables 2 and 3 provide a summary of the Newstart Allowance and Youth Allowance (other) populations and show the derivation of the respective job seeker populations (see the reference to job seekers in the Comparability of Data section of these Explanatory Notes). These populations are added together to derive the total number of job seekers. Tables 4 to 8 provide information on the total job seeker population.

The earnings data in Table 8 is derived using a different methodology to that of the other tables in the publication. Table 8 is based on the combined population of job seekers who are eligible for and entitled to receive Newstart Allowance or Youth Allowance (other) at the end of the second last week in the month. Thus, the data obtained from this table will not be directly comparable with those calculated using monthly averages in other tables.

Payment History

Youth Allowance

From 1 July 1998 Youth Allowance was introduced to provide income support to young people, including students, those looking for work, and those who are sick. Youth Allowees may be undertaking full-time study, full-time job search or a combination of approved activities. Some young people will be exempt from the activity test because of their personal circumstances, eg. illness, homelessness or major personal crisis. The Youth Allowance replaced:

- AUSTUDY for 16-24 year olds (and certain 15 year olds);
- Newstart Allowance for 16-20 year olds (and certain 15 year olds);
- Youth Training Allowance for 16-17 year olds (and certain 15 year olds);
- Sickness Allowance for 16-20 year olds (and certain 15 year olds); and
- More-than-minimum rate Family Payment for secondary students aged 16-18 not getting AUSTUDY.

Youth Allowance recipients are subject to the parental means test. Under previous arrangements, unemployed people aged 18 to 20 were not subject to the parental means test, unlike 18 to 20 year old students.

Special provisions applied for 18 to 20 year olds who were already on Newstart or Sickness Allowance at the date of announcement of Youth Allowance, and who remained on payment when Youth Allowance commenced on 1 July 1998. This group were able to remain on their existing payment and retain their existing benefits.

Youth Allowance had a significant downward effect on Newstart Allowance numbers from July 1998 and total job seeker numbers due to the parental means test.

Newstart Allowance

From 1 July 1998, Newstart Allowance for 16-20 year olds (and certain 15 year olds) was replaced by Youth Allowance. Young people aged 18 to 20 years old who were on Newstart or Sickness Allowance at the date of announcement of Youth Allowance and when Youth Allowance commenced on 1 July 1998, were able to remain on Newstart Allowance.

From 20 September 1996, Job Search Allowance and Newstart Allowance were combined into one payment - Newstart Allowance - which was payable to eligible recipients aged 18 years and over and to some people who were in receipt of Job Search Allowance and aged under 18 at 31 December 1994 (see Job Search Allowance).

Prior to 20 September 1996, Newstart Allowance was payable to eligible persons over 18 years who had been registered as unemployed with the Commonwealth Employment Service (CES) for 12 months or more.

| | |
|---------------------------------|---|
| <i>Job Search Allowance</i> | <p>From 20 September 1996, the payment was combined with Newstart Allowance to form one payment called Newstart Allowance. All Job Search Allowance recipients were transferred to Newstart Allowance.</p> <p>Prior to 20 September 1996, Job Search Allowance was payable to eligible persons who had been registered as unemployed with the CES for up to 12 months. It was also payable to eligible persons who were in receipt of Job Search Allowance and under 18 years of age at 31 December 1994. Persons aged 15 to 18 years who were not receiving Job Search Allowance prior to 1 January 1995 commenced on Youth Training Allowance.</p> |
| <i>Sickness Allowance</i> | <p>From 17 March 1996, persons in receipt of Newstart Allowance or Youth Training Allowance who became temporarily incapacitated no longer transferred to Sickness Allowance after 13 weeks. This change had the effect of increasing total Newstart Allowance/Youth Training Allowance figures but did not affect job seeker figures as those recipients who were incapacitated were excluded from the Newstart and Youth Training job seeker populations.</p> <p>Under current arrangements, these recipients remain on their existing payments but are exempt from the activity test for the duration of their medical certificates. People who become unemployed because of illness, and those who suffer a potential loss of income due to sickness, are paid Newstart Allowance because they are unemployed.</p> <p>Sickness Allowance for 16 to 20 year olds (and certain 15 year olds) has now been replaced by Youth Allowance, which was introduced on 1 July 1998 (see Youth Allowance).</p> |
| <i>Partner Allowance</i> | <p>From 20 September 2003, Partner Allowance was closed to new claimants. People on Partner Allowance before this date can remain on the allowance while they remain 'current', that is retain eligibility and entitlement for the allowance.</p> <p>From 1 July 1995 Partner Allowance has only been granted to persons who are dependent partners of pensioners and allowees and who were born before 1 July 1955, have no dependent children and have little or no recent workforce experience. Other dependent partners have to qualify for an income support payment in their own right, such as Newstart Allowance.</p> <p>Partner Allowance was introduced in September 1994, and was paid to partners of persons receiving Job Search Allowance, Newstart Allowance, Sickness Allowance or Special Benefit if certain eligibility criteria were satisfied.</p> |
| <i>Youth Training Allowance</i> | <p>Youth Training Allowance was replaced by Youth Allowance on 1 July 1998 (see Youth Allowance).</p> <p>From 1 January 1995, eligible persons aged under 18 years who were new entrants to the job search pool were paid Youth Training Allowance. (People who were in receipt of Job Search</p> |

Allowance and aged under 18 years at 31 December 1994 continued to be paid Job Search Allowance. From 20 September 1996, those young persons still being paid Job Search Allowance were transferred to Newstart Allowance.)

Widow Allowance

Widow Allowance, introduced on 1 January 1995, is payable to females aged 50 years or over who have become widowed, divorced or separated since turning 40 years (50 prior to 20 March 1997), if they meet a number of other criteria relating to current marital status and recent work experience. This has had a slight downwards effect on Newstart Allowance numbers from January 1995.

Mature Age Allowance

From 20 September 2003, Mature Age Allowance was closed to new claimants. People on Mature Age Allowance before this date can remain on the allowance while they remain 'current', that is retain eligibility and entitlement for the allowance.

From 1 July 1996, the qualification conditions for Mature Age Allowance changed for new claimants. The requirement for 12 months prior receipt of income support was reduced to 9 months for people transferring from Newstart Allowance and removed entirely for people transferring from non-activity tested payments. The requirement to have been registered as unemployed for 9 months was replaced with a requirement to have no recent workforce experience. Reporting of these new claimants commenced from September 1996.

Mature Age Allowance was introduced on 24 March 1994, and was paid to long-term unemployed persons aged 60 years and over (but below Age Pension age) who had been receiving income support for 9 months or more and who were eligible for Newstart Allowance. The introduction of Mature Age Allowance had a downwards effect on Newstart Allowance numbers from April 1994 until September 2003.

Comparability of Data

There have been significant changes to the data presented in this publication due to a number of events. The main changes are:

- the method of counting recipients;
- the inclusion of some CDEP recipients in the total recipient numbers;
- the introduction of Youth Allowance in July 1998;
- the way 'job seeker' is defined; and
- the way duration is calculated.

People using this data to construct time series should note the following comments.

Definition of Recipient

From July 2002, FaCS introduced a new method to more accurately measure the number of people receiving labour market and related payments. For those receiving labour market and related payments, their eligibility and entitlement status is administered by a payment system called Newstart Common Platform System. Within this system recipients who are both eligible and entitled to receive a payment have a determination

status of 'current'. The new method therefore counts these 'current' recipients.

The old method of counting recipients was specified to include all paid recipients - those who received a payment within a given fortnight. As compiled, however, this count excluded, from mid 1998, recipients who received a 'one-off' payment. These can occur, for instance, when a normal payment is interrupted (eg. payment is cancelled and then restored within that pay period) and a portion of the normal payment is paid.

The time series in Tables 1 and 4 reflect the revised method, as does the remainder of the publication. Revised historical data for these time series from May 1998 to June 2002 can be found in the July 2002 publication.

From July 2003 FaCS introduced a more sustainable methodology for this revised recipient count. Due to limitations in available data sources in 2002, the revised recipient count had to be derived through a complicated process. This more sustainable methodology resulted in slight differences from the recipient numbers used in previous editions.

Community Development Employment Projects (CDEP) From 20 March 2000, eligible participants in CDEP started receiving CDEP participant supplement and other add-ons, such as rent assistance, as part of income support payments. This added a number of new recipients to those who are normally eligible for payments reported in this publication.

Introduction of Youth Allowance The sum of the number of Newstart Allowees and Youth Training Allowees prior to July 1998 is broadly comparable with the sum of Newstart Allowees and Youth Allowees (other) after July 1998. There are two main problems in comparing these two series. The first is the exclusion of some 18 to 20 year old unemployed people due to the application of the Youth Allowance parental means test (see the Youth Allowance section under Payment History). The second is the inclusion of Sickness Allowees in the Youth Allowance (other) population.

There is greater comparability between total Newstart Allowance and Youth Training Allowance job seekers prior to July 1998 and total Newstart Allowance and Youth Allowance (other) job seekers after July 1998. This is because the Sickness Allowance group is excluded from the job seeker total. The problem, however, of the exclusion of some recipients through the application of the Youth Allowance parental means test still remains.

Job seekers Prior to July 1998, the job seeker category was defined by excluding all Newstart Allowees who did not receive a payment, recipients who were incapacitated, and those receiving a payment who were undertaking training. Some people who were not required to engage in job search were classified as job seekers, including people undertaking full-time voluntary work, people on jury duty and pregnant women around the time of the birth of their child.

From July 1998, the definition of job seekers has been placed on a sounder conceptual basis. It is now derived for Newstart Allowance and Youth Allowance (other) recipients by excluding all people who did not receive a payment due to their own and/or their partner's income, or where applicable, parental income, and all those known not to be required to search for work. People receiving Intensive Support Customised Assistance under Job Network arrangements are classified as job seekers although they may not always be undertaking job search. These people negotiate their activity agreement with their Job Network member.

The total number of job seekers (comparable to pre-July 1998 estimates) is calculated by adding together the number of job seekers in receipt of Newstart Allowance and Youth Allowance (other) - see the Explanatory Notes on *Youth Allowance*.

Duration

Following system changes in May 1998, duration has been defined according to the time a recipient spends on income support - short-term recipients are those who have been on income support for up to 12 months and long-term recipients are those who have been on income support for 12 months or more.

Prior to 1998, duration was defined according to the time a recipient was registered as unemployed - short-term recipients were people who were registered as unemployed for up to 12 months and long-term recipients were people who were registered for 12 months or more.

Closure of Mature Age and Partner Allowances

From 20 September 2003, Mature Age Allowance and Partner Allowance were closed to new claimants. People on these allowances before this date can remain on that allowance while they remain 'current', that is retain eligibility and entitlement for the allowance. The majority of people who would previously have claimed these payments will now claim Newstart Allowance.

Symbols

n.a. not available
 .. not applicable

GLOSSARY

| | |
|---|---|
| Activity test status | The activity that a Newstart Allowance or Youth Allowance (other) recipient has agreed to undertake in order to meet the activity test. To satisfy the activity test recipients must be actively seeking and willing to take up work or undertaking activities to improve their employment prospects. |
| Age | Age in years at time of data collection. |
| Area Support Office | A Centrelink office that supports a set of Customer Service Centres for a specified area. These are generally not confined to State boundaries. |
| Centrelink Youth Service Centre | A Centrelink Youth Service Centre consists of specialised staff who provide young people with improved access to Government services and income support. This is done by offering a mainstream service, as well as specialist case management to help access educational, labour market, job search, housing, health and general welfare assistance; and by providing a regular FaCS visiting service to youth via hostels, refuges and voluntary agencies. |
| Community Development Employment Projects (CDEP) | <p>The CDEP scheme is a programme funded currently by DEWR and in the past by the Aboriginal and Torres Strait Islander Commission (ATSIC). The scheme enables Aboriginal and Torres Strait Islander community councils and other approved Aboriginal and Torres Strait Islander groups to offer work to community members in activities that assist individuals in acquiring skills which benefit the community, develop business enterprises and/or lead to unsubsidised employment. The scheme also aims to develop management and business skills in an environment conducive to the principles of self-determination.</p> <p>The CDEP Participant Supplement (CPS) is payable to eligible CDEP participants. It can be paid fortnightly or as a 12 weekly payment.</p> |
| Customer Service Centre | A Customer Service Centre set within a particular region that provides FaCSIA, DEWR and other payments and related information and services to recipients. Customer Service Centres are managed by Area Support Offices. |
| Did not receive a payment | Persons who did not receive a payment due to their own income and/or that of their partner, or parents, where applicable. This group is often referred to as 'zero paid'. |
| Eligibility and payment status | Refer to the Methodology entry in the Explanatory Notes. |
| Fortnightly earnings | Amount of income earned, derived, or received by a person for the person's own use or benefit in the previous fortnight. |
| Incapacitated | A person on Newstart Allowance or Youth Allowance (other) who has an activity test status indicating they are temporarily ill or incapacitated. Refer to the entry for Sickness Allowance in the Explanatory Notes. |

| | |
|--|---|
| Job seekers | A person on Newstart Allowance or Youth Allowance (other) who would usually be engaged in jobsearch. See Explanatory Notes for definition and history. |
| Job Search Allowance (JSA) | Up to 20 September 1996, Job Search Allowance was payable to CES eligible persons who had been registered as unemployed with the CES for up to 12 months. From 20 September 1996, the payment was combined with Newstart Allowance to form one payment called Newstart Allowance. See Explanatory Notes for history. |
| Long-term recipients | Persons on Newstart Allowance or Youth Allowance who have been receiving income support for 12 months or more. Duration of long-term recipients can be reset to zero if they exited from payments for more than 13 weeks. |
| Mature Age Allowance (MAA) | From 20 September 2003, Mature Age Allowance was closed to new claimants. People on Mature Age Allowance before this date can remain on the allowance while they remain 'current', that is retain eligibility and entitlement for the allowance. Mature Age Allowance, a non-activity-tested payment, is payable to unemployed people aged 60 years and over (but below Age Pension age) with little or no recent workforce experience who meet certain requirements for previous receipt of income support. See Explanatory Notes for history. |
| Newstart Allowance (NSA) | Newstart Allowance is payable to eligible unemployed persons aged 21 years and over (but below Age Pension age) who satisfy the activity test. See Explanatory Notes for history. |
| Newstart Common Platform System (NCP) | The Newstart Common Platform System (NCP) was introduced in May 1998. The NCP administers all labour market and related payments. This includes primary payments such as Newstart Allowance, Youth Allowance, Mature Age Allowance, Widow Allowance and Partner Allowance. Other payments on the NCP include Special Benefit, Sickness Allowance, Exceptional Circumstances Relief, Farm Help and Austudy. |
| Partner Allowance (PA) | <p>From 20 September 2003, Partner Allowance was closed to new claimants. People on Partner Allowance before this date can remain on the allowance while they remain 'current', that is retain eligibility and entitlement for the allowance.</p> <p>Partner Allowance, a non-activity-tested payment, is payable to persons who are dependent partners of pensioners and allowees and who were born before 1 July 1955, have no dependent children and have little or no recent workforce experience. See Explanatory Notes for history.</p> |
| Short-term recipients | Persons on Newstart Allowance or Youth Allowance who have been receiving income support for less than 12 months. Duration of short-term recipients can be reset to zero if they exited from payments for more than 6 weeks. |
| States | States and Territories of Australia derived from the postcode of the recipient's residence as held on the Centrelink payment system. |

| | |
|---------------------------------------|--|
| Widow Allowance (WA) | <p>From 1 July 2005 Widow Allowance was closed to new claimants, unless the woman was born on or before 1 July 1955.</p> <p>Widow Allowance, a non-activity tested payment, is payable to females aged 50 years or over who have become widowed, divorced or separated since turning 40 years if they have little or no recent work experience and meet a number of other criteria relating to current marital status. See Explanatory Notes for history.</p> |
| Youth Training Allowance (YTA) | <p>From 1 January 1995 eligible persons aged under 18 years who were registered as unemployed with the CES were paid Youth Training Allowance. From 1 July 1998, Youth Training Allowance was replaced by Youth Allowance. See Explanatory Notes for history.</p> |
| Youth Allowance (YA) | <p>Youth Allowance is payable to eligible full-time students aged 16 to 25 years, and to eligible unemployed persons aged 16 to 20 years who satisfy the activity test. Note, there are certain exceptions for some 15 and 25 year olds. See Explanatory Notes for history.</p> <p>Youth Allowees may be undertaking full-time study, full-time job search or a combination of approved activities. Some young people will be exempt from the activity test because of their personal circumstances, eg. illness, homelessness or major personal crisis. See the Explanatory Notes for more information.</p> |
| Youth Allowance (other) | <p>Youth Allowance recipients who are not full-time students or full-time Australian Apprentices.</p> |
| Zero paid | <p>See 'Did not receive a payment'.</p> |

APPENDIX

COMPARISONS BETWEEN DEWR UNEMPLOYMENT LABOUR MARKET PAYMENT NUMBERS AND ABS LABOUR FORCE UNEMPLOYMENT STATISTICS

| | |
|---|--|
| Official statistics | Official unemployment statistics are released by the Australian Bureau of Statistics (ABS). The ABS uses definitions recommended by the International Labour Office which have been accepted internationally as the most appropriate for the compilation of official statistics of unemployment. |
| ABS definition | The ABS unemployment statistics measure the number of persons who, for a particular reference period, did not undertake any paid work, were actively looking for work and were available to start work. |
| DEWR Unemployment Labour Market Payment Statistics | The labour market payment statistics give the number of persons who are both eligible and entitled to receive Newstart Allowance or Youth Allowance (other). The criteria for receipt of these payments do not match those the ABS uses to determine whether a person is classed as unemployed or employed for statistical purposes. |
| Differences | Care should be taken when comparing the ABS labour force and DEWR labour market payment data. There are a number of reasons why the two series cannot be directly compared. |
| <i>Duration</i> | <p>Both DEWR and the ABS classify long-term duration as over 12 months, but use substantially different definitions of duration:</p> <p>DEWR measures duration of income support. This includes not just time on unemployment benefits but time on any income support payment.</p> <p>The ABS measures length of time unemployed using their unemployment definition.</p> <p>DEWR unemployed recipients can have breaks without payment for up to 25 weeks but still be classified as long-term income support recipients:</p> <ul style="list-style-type: none">• Recipients who do not receive a payment due to their earnings can have up to 12 weeks without a payment before they are automatically cancelled. This reduces disincentives to accept short-term work.• Long-term recipients can have another 13 weeks off payment after payment is cancelled and still keep their long-term status if they return to income support. This means they keep access to assistance such as the Employment Entry Payment and the higher payment rate for recipients over 60. |

For the ABS statistics, any hours of work for a period as short as two weeks count as a break from unemployment and so are enough to reset a person's unemployment duration.

The difference between these two concepts, together with the fact that DEWR recipients are able to have ongoing part-time work (see 'employment' below) mean that many unemployed recipients remain classified by DEWR as long-term recipients when they would be classified as short-term unemployed under the ABS definition.

Seasonal adjustment The ABS produces a seasonally adjusted series. The DEWR labour market payment numbers data are not seasonally adjusted.

Classification The ABS classifies a person as unemployed if he or she is aged 15 years and over, was not employed during the week before the interview, has actively looked for full-time or part-time work and is available to start work. From February 2004, people who had not actively looked for work because they were waiting to start a job within four weeks are also classified as unemployed.

The Newstart Allowance and Youth Allowance (other) series generally count people who are eligible for and entitled to receive a payment between the ages of 15 years and 64 years in the case of men and 15 to 63 years in the case of women.

Employment Newstart Allowance and Youth Allowance (other) recipients may be employed part-time, but within an income test limit; the ABS classifies a person as "employed" if, among other things, he or she has worked for one hour or more during the survey period.

Timing The timing of collections of the series are different:

- DEWR reports monthly average numbers of people both eligible for and entitled to receive Newstart Allowance and Youth Allowance (other). These monthly averages are calculated using figures collected for each Friday throughout the reference month.
- ABS numbers are based on a sample interview survey of occupants of selected dwellings covering around 0.5% of the total Australian population. These persons are interviewed during the two weeks beginning the Monday between the 6th and 12th of each month and the information obtained is based on the week before the interview takes place.

Treatment of partners The ABS series includes unemployed persons whose spouse is working, irrespective of income, whereas Newstart Allowance and Youth Allowance (other) recipients are subject to an income and assets test for themselves and their spouse.

Pensioners The ABS series includes persons being paid a pension but looking for work (eg. sole parents in receipt of Parenting Payments looking for work).

| | |
|------------------------|---|
| <i>Non job seekers</i> | The overall Newstart Allowance and Youth Allowance (other) series includes persons who are not required to undertake jobsearch. These persons are separately identified in Tables 2 and 3, and have then been excluded in subsequent tables. These people may be undertaking training, the development of self-employment opportunities, full-time voluntary work or a combination of voluntary and part-time work which excludes them from jobsearch obligations. They may also be incapacitated or have another temporary exemption from jobsearch. |
| <i>Waiting periods</i> | The ABS series includes persons who are serving a waiting period before being granted Newstart Allowance or Youth Allowance (other), or whose allowance was deferred. |
| <i>Survey</i> | The ABS figures are derived from a Labour Force Survey which is a sample survey, whereas the DEWR statistics are a complete count of those both eligible for and entitled to receive Newstart Allowance and Youth Allowance (other). |

FOR MORE INFORMATION

Labour market information

Other statistics on recipients of labour market related payments are available on request.

In addition to Newstart and Youth Allowances, statistics are also available on Partner Allowance, Mature Age Allowance and Widow Allowance.

For publication distribution enquiries email:
MI.WORKINGAGE.PAYMENTS@centrelink.gov.au

Written correspondence concerning this publication or statistics on labour market related payments should be addressed to:

Director
Working Age Payments Performance and Monitoring Section
Department of Employment and Workplace Relations
PO Box 9879
Canberra Mail Centre ACT 2601

or forwarded via facsimile to (02) 6275 3328.

Other recipient information

Statistics relating to other recipients are also available, including recipient numbers and characteristics for the various FaCSIA pensions, benefits and family payments.

Other statistical outputs

The following statistical outputs are available on request:

Department of Families, Community Services and Indigenous Affairs (FaCSIA)
Income Support Customers: a Statistical Overview
1996, 1997, 1998, 1999, 2000, 2001, 2002, 2003 and 2004.