



AUSTRALIAN REGIONAL LABOUR MARKETS

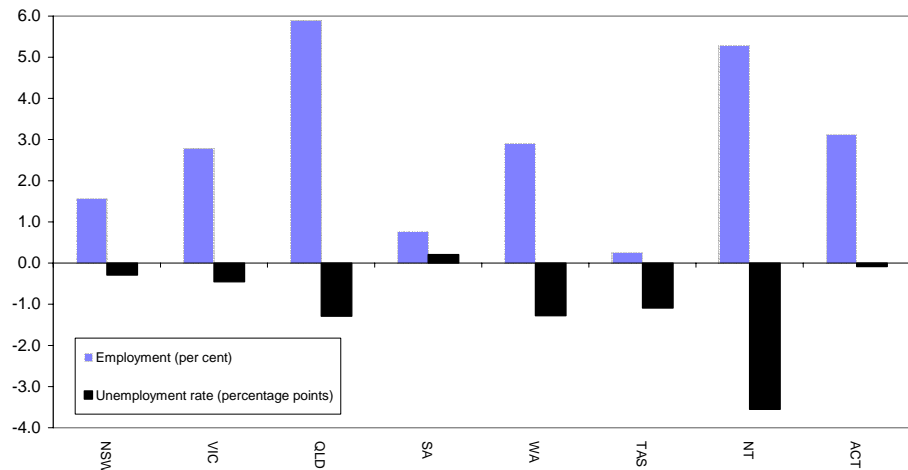
MARCH QUARTER 2007

MAIN FINDINGS

State/territory labour market developments

Employment rose in all States and Territories over the year to the March quarter 2007. The largest increase (in percentage terms) was recorded in Queensland (up by 5.9 per cent), followed by the Northern Territory (up by 5.3 per cent) and the Australian Capital Territory (up by 3.1 per cent). The unemployment rate fell in all States and Territories except South Australia, where it rose by 0.2 percentage points to 5.8 per cent. The largest falls over the year were recorded in the Northern Territory (down by 3.6 percentage points to 3.8 per cent), Queensland (down by 1.3 percentage points to 4.5 per cent) and Western Australia (down by 1.3 percentage points to 3.3 per cent).

CHANGE IN EMPLOYMENT AND THE UNEMPLOYMENT RATE
MARCH QUARTER 2006 TO MARCH QUARTER 2007



Developments at the ABS Labour Force Region Level

Employment increased in over 68 per cent of regions over the year to the March quarter 2007, while over 71 per cent of regions recorded a reduction in their unemployment rate. A number of regions have recorded strong employment growth as well as a significant reduction in their unemployment rate over the last 12 months. In particular:

- Loddon Mallee in Victoria recorded a 14.6 per cent increase in employment while the unemployment rate fell by 3.2 percentage points to 4.4 per cent;
- South and East Moreton in Queensland recorded a 12.0 per cent increase in employment while the unemployment rate fell by 0.7 percentage points to 3.7 per cent; and
- employment in Inner Brisbane rose by 11.2 per cent while the unemployment rate fell by 2.9 percentage points to 2.9 per cent.

LABOUR FORCE STATUS BY ABS LABOUR FORCE REGIONS
MARCH QUARTER 2007
Not Seasonally Adjusted

State/Region	Employed		Unemployed		Unemployment rate		Employment rate (a)		Participation rate	
	'000	Annual change	'000	Annual change	%	Annual change (% pts)	%	Annual change (% pts)	%	Annual change (% pts)
AUSTRALIA	10 306.6	284.9	542.4	-57.3	5.0	-0.6	72.2	0.8	64.8	0.3
<i>Metropolitan Australia (b)</i>	6474.9	137.7	336.9	-16.6	4.9	-0.3	72.6	0.4	65.6	0.2
<i>Non-metropolitan Australia (b)</i>	3831.7	147.2	205.5	-40.7	5.1	-1.2	71.5	1.5	63.5	0.6
New South Wales	3294.4	50.9	193.2	-7.6	5.5	-0.3	70.3	0.3	62.9	0.1
<i>Sydney</i>	2153.3	16.6	120.4	7.1	5.3	0.3	71.4	-0.3	64.9	-0.1
Inner Sydney and Inner Western Sydney	258.2	-13.5	15.5	7.0	5.7	2.6	72.9	-1.6	65.8	-2.2
Inner Sydney	173.4	-16.2	10.1	4.8	5.5	2.8	72.2	-4.5	67.4	-4.9
Eastern Suburbs	127.6	-2.4	5.3	0.3	4.0	0.3	73.9	-0.8	61.7	-1.6
St George-Sutherland	241.0	15.6	9.3	0.3	3.7	-0.1	75.8	1.2	67.4	3.5
Canterbury-Bankstown	137.0	-6.9	6.8	-1.2	4.7	-0.5	63.0	-4.5	55.6	-3.8
Fairfield-Liverpool/ Outer South Western Sydney	286.1	21.0	25.9	3.9	8.3	0.6	67.5	3.6	66.3	4.6
Fairfield-Liverpool	160.2	13.6	15.4	2.7	8.8	0.8	63.5	4.0	61.8	5.1
Central Western Sydney	143.6	7.5	9.1	-1.7	6.0	-1.4	64.1	0.6	60.9	1.7
North Western Sydney	288.3	-2.0	19.8	5.0	6.4	1.6	67.9	-2.5	65.7	-0.1
Lower Northern Sydney	167.4	-6.1	6.0	-3.6	3.5	-1.8	78.1	1.2	66.6	-4.5
Central Northern Sydney	230.0	-1.0	8.8	-0.1	3.7	0.0	76.5	-1.7	69.4	-1.1
Northern Beaches	141.9	11.5	3.2	-1.0	2.2	-0.9	82.7	3.3	72.6	4.5
Gosford-Wyong	132.0	-7.1	10.6	-1.9	7.4	-0.8	68.0	-1.5	57.2	-4.3
<i>Balance of New South Wales</i>	1141.1	34.4	72.7	-14.7	6.0	-1.3	68.3	1.3	59.5	0.3
Hunter	277.9	1.9	16.0	-6.7	5.4	-2.2	68.6	0.8	59.4	-1.7
Newcastle	226.3	-10.9	13.2	-3.8	5.5	-1.2	67.5	-1.7	57.8	-4.2
Illawarra and South Eastern	269.0	12.8	16.4	-3.1	5.8	-1.3	66.5	1.4	57.4	1.3
Illawarra	172.5	9.1	12.9	-2.9	7.0	-1.9	64.5	0.8	55.2	1.2
Wollongong	125.3	7.4	9.7	-2.5	7.2	-2.2	66.3	2.1	59.5	1.5
Richmond-Tweed/ Mid-North Coast	222.3	23.8	19.4	-0.5	8.0	-1.1	65.3	3.9	57.7	4.9
Northern/ Far West-North Western/ Central West	237.9	-8.8	13.8	-0.8	5.5	-0.1	69.9	-1.7	61.3	-3.1
Murray-Murrumbidgee	134.0	4.8	7.1	-3.6	5.0	-2.6	73.9	3.8	65.1	-0.2
Victoria	2560.3	69.1	141.0	-8.8	5.2	-0.5	72.3	0.8	64.8	0.4
<i>Melbourne</i>	1880.6	34.1	103.8	-0.3	5.2	-0.1	72.4	0.3	65.4	0.1
Outer Western Melbourne	296.3	5.8	23.9	3.8	7.5	1.0	69.0	-0.4	66.0	1.0
North Western Melbourne	130.8	0.7	8.1	-3.4	5.8	-2.3	67.8	1.9	59.6	-2.1
Inner Melbourne	167.0	-1.6	7.8	0.9	4.4	0.5	77.4	-3.5	73.4	-1.4
North Eastern Melbourne	230.6	6.7	13.3	0.8	5.4	0.2	70.6	-0.3	66.1	1.0
Inner Eastern Melbourne	315.7	13.5	16.1	-2.6	4.9	-1.0	74.1	2.2	63.8	1.1
Southern Melbourne	213.7	4.6	9.1	-0.8	4.1	-0.5	75.1	-0.7	64.4	0.1
Outer Eastern Melbourne	220.0	6.5	9.2	1.8	4.0	0.7	77.7	1.2	69.2	1.4
South Eastern Melbourne	173.9	-4.1	10.4	-0.4	5.6	-0.1	66.7	-1.4	61.4	-2.5
Mornington Peninsula	132.6	2.1	6.0	-0.4	4.3	-0.4	74.0	3.2	65.3	-0.2
<i>Balance of Victoria</i>	679.7	35.0	37.1	-8.5	5.2	-1.4	72.1	2.2	63.3	1.3
Barwon-Western District	184.5	12.4	11.5	-1.2	5.9	-1.0	73.0	3.5	64.3	2.7
Central Highlands-Wimmera	94.9	4.9	7.5	-2.0	7.3	-2.2	68.4	1.6	62.3	0.7
Loddon-Mallee	137.9	17.6	6.4	-3.5	4.4	-3.2	74.4	6.1	66.1	5.5
Goulburn-Ovens-Murray	147.7	0.4	5.0	-2.9	3.3	-1.8	73.4	0.4	63.3	-2.1
All Gippsland	114.7	-0.3	6.7	1.1	5.5	0.9	69.6	-1.2	59.3	-0.6

(a) The employment rate refers to the proportion of the working age (15-64) population who are employed.

(b) The ABS defines metropolitan as those regions located within the State capital cities. Non-metropolitan is defined as those regions located outside the state capital cities as well as the two Territories.

LABOUR FORCE STATUS BY ABS LABOUR FORCE REGIONS
MARCH QUARTER 2007
Not Seasonally Adjusted

State/Region	Employed		Unemployed		Unemployment rate		Employment Rate (a)		Participation rate	
	'000	Annual change	'000	Annual change	%	Annual change (% pts)	%	Annual change (% pts)	%	Annual change (% pts)
Queensland	2104.3	117.0	100.2	-22.9	4.5	-1.3	74.5	2.3	67.5	1.3
Gold Coast	268.0	31.1	10.8	-0.3	3.9	-0.6	77.5	4.1	70.2	6.3
<i>Brisbane</i>	<i>984.2</i>	<i>46.6</i>	<i>44.3</i>	<i>-10.9</i>	<i>4.3</i>	<i>-1.3</i>	<i>75.4</i>	<i>1.8</i>	<i>68.8</i>	<i>0.8</i>
Brisbane City Inner Ring	266.9	26.9	8.0	-5.7	2.9	-2.5	81.4	6.0	74.9	4.2
Brisbane City Outer Ring	299.5	9.3	11.9	-4.1	3.8	-1.4	74.5	1.8	66.1	-0.4
South and East Brisbane Balance	199.3	6.3	13.4	0.6	6.3	0.1	72.9	1.3	68.0	0.6
North and West Brisbane Balance	218.5	4.0	11.1	-1.7	4.8	-0.8	72.2	-2.6	66.5	-0.9
<i>Balance of Queensland</i>	<i>1120.0</i>	<i>70.4</i>	<i>55.9</i>	<i>-12.1</i>	<i>4.8</i>	<i>-1.3</i>	<i>73.8</i>	<i>2.7</i>	<i>66.4</i>	<i>1.7</i>
South and East Moreton	256.8	27.5	9.9	-0.7	3.7	-0.7	77.7	3.9	70.1	5.6
North and West Moreton	184.4	19.0	11.1	-1.4	5.7	-1.4	74.3	4.6	66.6	4.5
Wide Bay-Burnett	101.0	0.0	9.2	-1.8	8.3	-1.5	60.1	1.0	51.8	-2.1
Darling Downs-South West	133.7	12.5	5.6	-0.4	4.0	-0.7	74.8	2.9	66.8	4.2
Mackay-Fitzroy-Central West	187.4	-2.3	6.8	-1.0	3.5	-0.4	75.4	0.7	67.1	-2.8
Northern-North West	130.9	1.6	7.3	-2.8	5.3	-2.0	75.6	-0.4	71.4	-2.4
Far North	125.8	12.1	6.1	-3.9	4.6	-3.5	74.1	5.3	67.9	2.6
South Australia	747.3	5.7	46.4	2.1	5.8	0.2	70.3	-0.7	62.1	0.0
<i>Adelaide</i>	<i>551.3</i>	<i>6.6</i>	<i>36.6</i>	<i>1.2</i>	<i>6.2</i>	<i>0.1</i>	<i>70.2</i>	<i>-0.7</i>	<i>62.2</i>	<i>0.2</i>
Northern Adelaide	162.3	-7.8	14.6	2.3	8.3	1.5	65.5	-3.2	61.4	-2.6
Western Adelaide	99.4	4.4	6.8	0.3	6.4	0.0	70.4	1.7	58.0	2.0
Eastern Adelaide	118.4	-3.0	6.1	-0.3	4.9	-0.1	72.8	-3.0	63.6	-2.4
Southern Adelaide	171.1	12.9	9.1	-1.0	5.0	-0.9	73.3	2.2	64.8	3.7
<i>Balance of South Australia</i>	<i>196.0</i>	<i>-0.9</i>	<i>9.8</i>	<i>0.9</i>	<i>4.8</i>	<i>0.4</i>	<i>70.7</i>	<i>-0.8</i>	<i>61.9</i>	<i>-0.7</i>
Northern and Western SA	77.9	1.8	4.2	0.8	5.2	0.8	69.6	0.8	63.4	1.3
Southern and Eastern SA	118.1	-2.7	5.6	0.1	4.5	0.2	71.5	-1.8	61.0	-1.9
Western Australia	1089.8	30.9	36.9	-13.6	3.3	-1.3	75.3	0.7	67.6	-0.4
<i>Perth</i>	<i>806.1</i>	<i>31.1</i>	<i>26.6</i>	<i>-12.2</i>	<i>3.2</i>	<i>-1.6</i>	<i>75.4</i>	<i>1.4</i>	<i>67.5</i>	<i>0.1</i>
Central Metropolitan	76.8	5.0	1.7	-1.1	2.2	-1.6	77.4	2.6	69.7	2.0
East Metropolitan	131.1	-1.4	5.3	-2.4	3.9	-1.6	74.4	0.6	65.1	-3.3
North Metropolitan	246.7	8.7	8.0	-4.8	3.1	-2.0	77.0	0.3	69.1	-0.4
South West Metropolitan	172.0	13.7	5.4	-1.0	3.0	-0.9	76.4	4.7	68.6	3.4
South East Metropolitan	179.6	5.2	6.2	-2.8	3.3	-1.6	72.6	-0.1	65.3	-0.6
<i>Balance of Western Australia</i>	<i>283.7</i>	<i>-0.2</i>	<i>10.3</i>	<i>-1.4</i>	<i>3.5</i>	<i>-0.4</i>	<i>74.8</i>	<i>-1.4</i>	<i>68.0</i>	<i>-1.9</i>
Lower Western WA	146.3	0.2	5.3	-1.6	3.5	-1.0	74.5	-0.5	65.2	-2.0
Remainder-Balance WA	137.4	-0.4	5.0	0.2	3.5	0.1	75.1	-2.4	71.3	-1.7
Tasmania	224.3	0.6	13.9	-2.8	5.8	-1.1	68.4	0.2	60.3	-1.1
Greater Hobart-Southern	114.2	2.1	5.7	-2.5	4.8	-2.1	70.2	1.1	61.3	-0.8
<i>Greater Hobart</i>	<i>99.4</i>	<i>2.8</i>	<i>5.1</i>	<i>-1.5</i>	<i>4.9</i>	<i>-1.5</i>	<i>71.4</i>	<i>1.7</i>	<i>62.5</i>	<i>0.2</i>
Northern	61.2	-0.5	3.7	-0.1	5.7	-0.2	66.9	-0.3	58.2	-1.1
Mersey-Lyell	48.9	-1.0	4.5	-0.1	8.5	0.0	66.2	-1.2	60.6	-1.8
Northern Territory	100.6	5.1	4.0	-3.6	3.8	-3.6	69.8	2.7	68.4	-0.7
Australian Capital Territory	185.6	5.6	6.9	0.1	3.6	-0.1	78.9	1.0	72.9	1.1

(a) The employment rate refers to the proportion of the working age (15-64) population who are employed.

EXPLANATORY NOTES

Introduction

The regional labour market estimates presented in this brochure are three-month averages derived from the Australian Bureau of Statistics (ABS) Monthly Labour Force Survey. These estimates are not adjusted to take account of seasonal and other variations and can exhibit irregular movements. They should therefore be used with caution.

Related information

Users may wish to refer to the DEWR *Small Area Labour Markets, Australia* publication, which is available, free of charge, at <http://www.workplace.gov.au> (in PDF format), or as a printed booklet upon request. This publication contains quarterly estimates of unemployment rates and levels for approximately 1350 Statistical Local Areas.

Next issue

The next issue of *Australian Regional Labour Markets*, for the June quarter 2007, is expected to be released in late July 2007.

Contact details

This brochure was prepared by the Economic and Labour Market Analysis Branch, Department of Employment and Workplace Relations, Canberra. For further information on this brochure or related statistics, contact Marjorie Rego in the Labour Market Analysis Section on (02) 6121 6198 or email marjorie.rego@dewr.gov.au.

More detailed monthly national, state and regional labour force statistics are available from the ABS. For further information on ABS labour force statistics, go to the 'Labour' theme page at the ABS website (www.abs.gov.au), or contact Craig Blair on (02) 6252 6565.