

# Labour Market Assistance Outcomes

Year ending September 2002

*This report contains information about placements, commencements and post labour market assistance outcomes achieved for Job Network services and other programmes managed by the Department of Employment and Workplace Relations (DEWR).*

## **Main features**

### **Outcomes**

The positive outcomes (employment and/or education/training) rate achieved in the year to end September 2002, three months after leaving assistance were:

- 51% for Intensive Assistance;
- 48% for Job Search Training;
- 70% for Job Matching;
- 80% for New Enterprise Incentive Scheme (NEIS);
- 33% for Work for the Dole;
- 56% for Indigenous Employment Programme Structured Training and Employment Projects (STEP);
- 69% for Indigenous Employment Programme Wage Assistance; and
- 53% for Return to Work.

### **Job Vacancies**

In the year to end September 2002, over 764,000 vacancies were notified on the Australian Job Search database.

### **Job Placements**

In the year to end September 2002, over 321,000 job seekers were placed into Job Matching vacancies. These include placements for those receiving other services, such as Intensive Assistance.

### **Commencements**

In the year to end September 2002, commencements by job seekers in the various types of labour market assistance included:

- 285,000 in Intensive Assistance;
- 80,800 in Job Search Training;
- 6,400 in NEIS;
- 6,100 in the STEP and Wage Assistance elements of the Indigenous Employment Programme;
- 61,600 in Work for the Dole;
- 490 in Community Work Placement;
- 3,300 in Transition to Work; and
- 2,200 in the Training Accounts and Credits.

### **Income Support**

In the year to end September 2002, the number of job seekers in receipt of Newstart or Youth Allowance (Other) decreased by over 44,400 to just over 644,700 job seekers. The number of job seekers who were long term recipients (ie on allowances for 12 months or more) increased by nearly 1,500 while the number of short term recipients decreased by over 45,900.

## In this issue

Section 1: Labour Market Assistance Outcomes	Page 3
Table 1.1 Post assistance labour market outcomes year to end September 2002	Page 3
Table 1.2 Post assistance employment and positive outcomes year to end September 2002	Page 4
Table 1.3 Intensive Assistance: Post assistance outcomes year to end September 2002	Page 5
Table 1.4 Job Search Training: Post assistance outcomes year to end September 2002	Page 6
Table 1.5 Job Matching: Post assistance outcomes year to end September 2002	Page 7
Table 1.6 NEIS: Post assistance outcomes year to end September 2002	Page 8
Table 1.7 Work for the Dole: Post assistance outcomes year to end September 2002	Page 9
Section 2: Access to and Participation in Labour Market Assistance year to end September 2002	Page 10
Table 2.1 Post assistance labour market outcomes year to end September 2002	Page 10
Table 2.2 Access to Job Matching by JNE job seeker characteristics year to end September 2002	Page 11
Table 2.3 Access to Job Search Training by JNE job seeker characteristics year to end September 2002	Page 12
Table 2.4 Access to Intensive Assistance by JNE job seeker characteristics year to end September 2002	Page 13
Table 2.5 Access to NEIS by JNE job seeker characteristics year to end September 2002	Page 14
Table 2.6 Access to Work for the Dole by JNE job seeker characteristics year to end September 2002	Page 15
Section 3: Participation and Outcomes by Region	Page 16
Table 3.1 Commencements in labour market assistance by region year to end September 2002	Page 16
Table 3.2 Job Matching placements by region year to end September 2002	Page 17
Table 3.3 Comparison of labour market assistance by region year to end September 2002	Page 18
Table 3.4 Regional labour market post assistance employment outcomes year to end September 2002	Page 19
Section 4: Impact on Income Support Recipients	Page 20
Technical Notes	Page 21

## Time periods used in this report

The Department's Post Programme Monitoring (PPM) Survey measures outcomes achieved by job seekers three months after they exit labour market assistance. This report contains outcomes data for job seekers who exited assistance in the 12 months to 30 June 2002 and their post assistance outcomes achieved by 30 September 2002.

Intensive Assistance post assistance outcomes should not be confused with *paid interim* or *paid final* outcomes. Post assistance outcomes are *all* employment and education outcomes while paid outcomes relate to a subset of employment and education outcomes where Job Network members receive payment for outcomes.

Commencement and placement data, derived from DEWR and Centrelink administrative systems, relate to job seekers who were placed in a job or commenced assistance between 1 October 2001 and 30 September 2002 and 1 October 2000 and 30 September 2001.

## More information.....

For further information, please contact Robert Lipp (02 6121 6046) or Michael Cameron (02 6121 7240) or e-mail [Meherun.Nisa@dewr.gov.au](mailto:Meherun.Nisa@dewr.gov.au).

© Commonwealth of Australia

This work is copyright. Apart from any use as permitted under the *Copyright Act 1968*, no part may be reproduced by any process without prior written permission from the Commonwealth available from Aus Info. Requests and inquiries concerning reproduction and rights should be addressed to the Manager, Legislative Services, AusInfo, GPO Box 1920, Canberra ACT 2601.

Department of Employment and Workplace Relations  
<http://www.dewr.gov.au/>

## Section 1: Labour Market Assistance Outcomes

### Post assistance labour market outcomes

Table 1.1 shows labour market outcomes and further assistance levels of all job seekers three months after leaving the various types of employment assistance. Job seekers are categorised as employed, unemployed, not in the labour force or in further

assistance. Care should be taken when comparing outcomes for current services with labour market programmes operating before the introduction of Job Network where outcome rates were affected by *excluding* those who proceeded to further labour market programme assistance. The Technical Notes at the end of this report discuss this issue further.

**Table 1.1: Post assistance labour market outcomes year to end September 2002**

Labour market assistance	Employed (%)	Unemployed (%)	Not in the Labour Force (%)	Further Assistance <sup>1</sup> (%)	Exits (number)
Intensive Assistance <sup>2</sup>	42.2	36.4	15.9	5.5	276,633
Funding level A <sup>3</sup>	47.6	32.2	14.7	5.4	187,792
Funding level B <sup>3</sup>	31.1	44.8	18.4	5.7	88,841
Job Search Training <sup>2</sup>	39.8	46.2	5.1	8.8	79,738
Job Matching <sup>4</sup>	66.1	28.3	5.6	na	238,956
Job Network Eligible (JNE) <sup>5</sup>	61.3	34.2	4.5	na	136,424
Job Matching Only (JMO) <sup>6</sup>	72.9	19.9	7.2	na	102,532
NEIS <sup>2</sup>	79.1	11.3	7.5	2.1	6,298
SEDS <sup>2</sup>	27.4	31.4	16.4	24.8	1,407
Work for the Dole <sup>2</sup>	23.5	41.7	8.9	25.9	52,067
IEP - STEP <sup>2</sup>	50.4	35.1	9.3	5.1	4,561
IEP - Wage Assistance <sup>2</sup>	65.3	21.2	7.0	6.5	1,976
Return to Work <sup>2</sup>	30.4	43.7	24.4	1.5	7,062

1. Further assistance includes commencements in DEWR funded labour market assistance and DEST programmes New Apprenticeships, Literacy and Numeracy and Advanced English for Migrants. Further assistance is not measured for Job Matching and job seekers who do not achieve an employment outcome are treated as either unemployed or not in the labour force.
  2. Post assistance outcomes are measured three months after the job seeker ceases assistance and relate to job seekers who ceased Intensive Assistance, Job Search Training, NEIS, Self Employment Development Scheme (SEDS), Work for the Dole, Return to Work Programme, Indigenous Employment Programme (IEP), Structured Training and Employment Projects (STEP) and IEP Wage Assistance between 1 July 2001 and 30 June 2002 and outcomes achieved by 30 September 2002. Positive and employment outcomes exclude indigenous job seekers who return to Community Development Employment Projects (CDEP) after leaving labour market assistance.
  3. The funding level refers to the level of disadvantage as defined by the Job Seeker Classification Instrument (JSCI) with B being the most disadvantaged.
  4. Post assistance outcomes for Job Matching relate to job seekers who were placed in a job between 1 July 2001 and 30 June 2002 and outcomes achieved by 30 September 2002. For job seekers who achieved a Job Matching placement within three months of leaving labour market assistance such as Job Search Training, Intensive Assistance and Work for the Dole, the outcome is excluded from Job Matching but included under the programme or service they participated in.
  5. Includes Job Network Eligible (JNE) job seekers who may be eligible for all Job Network services.
  6. Includes Job Matching Only (JMO) job seekers who are only eligible for Job Matching services.
- na - not applicable.

Source: The Post Programme Monitoring Survey conducted three months after job seekers cease assistance.

## Post assistance employment and positive outcomes

Table 1.2 shows job seekers' shares of full-time and part-time employment, education/training and positive outcomes three months after leaving different types of labour market assistance.

Education and training outcomes include job seekers who are studying at a secondary school or college, TAFE, business college or university three months after ceasing labour market assistance.

**Table 1.2: Post assistance employment and positive outcomes year to end September 2002**

	Full-time Employed (%)	Part-time Employed (%)	Total Employed (%)	Education & Training (%)	Positive Outcomes <sup>1</sup> (%)	Exits (number)
Labour market assistance						
Intensive Assistance <sup>2</sup>	17.0	25.2	42.2	10.3	51.2	276,633
Funding level A <sup>3</sup>	19.8	27.9	47.6	10.5	56.6	187,792
Funding level B <sup>3</sup>	11.4	19.7	31.1	10.1	40.2	88,841
Job Search Training <sup>2</sup>	20.1	19.7	39.8	12.4	48.0	79,738
Job Matching <sup>4</sup>	38.0	28.1	66.1	11.2	70.4	238,956
Job Network Eligible (JNE) <sup>5</sup>	34.9	26.3	61.3	9.2	65.6	136,424
Job Matching Only (JMO) <sup>6</sup>	42.3	30.6	72.9	14.0	77.2	102,532
NEIS <sup>2</sup>	46.5	32.6	79.1	6.9	80.4	6,298
SEDS <sup>2</sup>	10.4	17.0	27.4	11.4	35.3	1,407
Work for the Dole <sup>2</sup>	11.5	12.0	23.5	12.0	32.9	52,067
IEP - STEP <sup>2</sup>	39.0	11.4	50.4	17.5	55.9	4,561
IEP - Wage Assistance <sup>2</sup>	51.9	13.3	65.3	18.8	69.3	1,976
Return to Work <sup>2</sup>	4.4	26.1	30.4	28.4	52.7	7,062

1. Positive outcomes include employment and education/training outcomes. Positive outcomes are less than the sum of employment and education/training outcomes because some job seekers achieve both an employment and an education outcome.

2. Post assistance outcomes are measured three months after participants leave assistance and relate to job seekers who ceased Intensive Assistance, Job Search Training, NEIS, Self Employment Development Scheme (SEDS), Work for the Dole, Return to Work Programme or Indigenous Employment Programme (IEP) Structured Training and Employment Projects (STEP) and IEP Wage Assistance between 1 July 2001 and 30 June 2002 and outcomes achieved by 30 September 2002. Positive and employment outcomes exclude indigenous job seekers who return to Community Development Employment Projects (CDEP) after leaving labour market assistance.

3. The funding level refers to the level of disadvantage as defined by the Job Seeker Classification Instrument (JSCI) with level B being the most disadvantaged.

4. Post assistance outcomes for Job Matching relate to job seekers who were placed in a job between 1 July 2001 and 30 June 2002 and outcomes achieved by 30 September 2002. For job seekers who achieved a Job Matching placement within three months of leaving labour market assistance such as Job Search Training, Intensive Assistance and Work for the Dole, the outcome is excluded from Job Matching but included under the programme or service they participated in.

5. Includes Job Network Eligible (JNE) job seekers who may be eligible for all Job Network services.

6. Includes Job Matching Only (JMO) job seekers who are only eligible for Job Matching services.

Source: The Post Programme Monitoring Survey conducted three months after job seekers cease assistance.

## Intensive Assistance

1 July 2001 and 30 June 2002 and the outcomes they achieved three months later to 30 September 2002.

Table 1.3 shows post assistance outcomes for Intensive Assistance participants who exited between

**Table 1.3: Intensive Assistance: Post assistance outcomes year to end September 2002<sup>1</sup>**

Job seeker characteristics	Employment (%)	Education & Training (%)	Positive Outcomes <sup>2</sup> (%)	Exits (number)
<b>Funding level<sup>3</sup></b>				
A	47.6	10.5	56.6	187,792
B	31.1	10.1	40.2	88,841
<b>Age group (years)</b>				
15 to 20	40.2	16.9	55.1	35,003
21 to 24	42.8	13.8	54.3	31,316
25 to 34	43.8	10.5	52.7	67,329
35 to 49	43.8	10.3	52.8	93,759
50 or more	39.5	7.0	45.7	49,226
<b>Duration on income support (months)</b>				
0 to less than 6	49.2	10.3	58.3	100,012
6 to less than 12	44.4	10.9	53.8	31,405
12 to less than 24	43.0	11.6	52.9	35,169
24 to less than 36	38.7	11.2	48.5	29,398
36 or more	33.8	9.6	42.2	80,649
<b>Educational attainment</b>				
Less than Year 10	36.8	7.4	43.5	80,631
Year 10 or 11	43.5	9.0	51.3	114,234
Year 12	46.2	15.2	59.3	41,597
Post Secondary	44.5	14.3	56.7	40,171
<b>Gender</b>				
Male	41.1	8.4	48.5	195,288
Female	44.4	14.8	57.0	81,345
<b>Equity groups<sup>4</sup></b>				
Disability	34.1	9.3	42.2	42,529
Indigenous	30.0	10.6	39.4	21,635
CALD <sup>5</sup>	40.7	15.2	54.6	57,613
Sole parents	33.7	13.1	44.9	9,420
<b>Total</b>	<b>42.2</b>	<b>10.3</b>	<b>51.2</b>	<b>276,633</b>

1. Job seekers who exited Intensive Assistance between 1 July 2001 and 30 June 2002 and achieved outcomes by 30 September 2002. Intensive Assistance outcomes are calculated for all job seekers who exited up to 5 August 2001. Outcomes estimates are based on a 25% sample of job seekers.
2. Positive outcomes include employment and education/training outcomes. Positive outcomes are less than the sum of employment and education/training outcomes because some job seekers achieve both an employment and an education/training outcome. Positive and employment outcomes exclude indigenous job seekers who return to Community Development Employment Projects (CDEP) after leaving labour market assistance.
3. The funding level refers to the level of disadvantage as defined by the Job Seeker Classification Instrument (JSCI), with funding level B being the most disadvantaged.
4. Equity groups are not mutually exclusive.
5. People from Culturally and Linguistically Diverse backgrounds from other than main English Speaking countries.

Source: The Post Programme Monitoring Survey conducted three months after job seekers cease assistance.

## Job Search Training

Table 1.4 shows post assistance outcomes for Job Search Training participants who exited assistance

between 1 July 2001 and 30 June 2002 and the outcomes they achieved three months later, up to 30 September 2002.

**Table 1.4: Job Search Training: Post assistance outcomes year to end September 2002<sup>1</sup>**

Job seeker characteristics	Employment (%)	Education & Training (%)	Positive Outcomes <sup>2</sup> (%)	Exits (number)
<b>Age group (years)</b>				
15 to 20	40.5	18.5	53.3	13,303
21 to 24	45.7	17.3	57.0	15,251
25 to 34	41.1	11.5	48.5	24,938
35 to 49	37.8	9.6	44.0	20,433
50 or more	31.8	6.7	36.4	5,813
<b>Duration on income support (months)</b>				
0 to less than 6	41.4	12.9	50.0	54,699
6 to less than 12	37.9	11.2	45.3	16,330
12 to less than 24	33.9	10.6	40.8	5,766
24 to less than 36	32.0	10.2	38.7	1,603
36 or more	31.2	12.3	39.7	1,340
<b>Educational attainment</b>				
Less than Year 10	31.0	5.7	35.5	1,733
Year 10 or 11	37.3	8.0	43.0	26,130
Year 12	41.1	16.0	51.4	20,878
Post Secondary	41.4	13.6	50.2	30,997
<b>Gender</b>				
Male	37.1	10.6	44.5	54,708
Female	45.0	15.8	54.7	25,030
<b>Equity groups<sup>3</sup></b>				
Disability	32.8	10.6	40.3	3,938
Indigenous	24.8	7.4	31.8	570
CALD <sup>4</sup>	34.5	15.9	45.9	9,414
Sole Parents	29.9	10.8	37.7	996
<b>Total</b>	<b>39.8</b>	<b>12.4</b>	<b>48.0</b>	<b>79,738</b>

1. Job seekers who ceased Job Search Training between 1 July 2001 and 30 June 2002 and outcomes achieved by 30 September 2002.
2. Positive outcomes include employment and education/training outcomes. Positive outcomes are less than the sum of employment and education/training outcomes because some job seekers achieve both an employment and an education/training outcome. Positive and employment outcomes exclude indigenous job seekers who return to Community Development Employment Projects (CDEP) after leaving labour market assistance.
3. Equity groups are not mutually exclusive.
4. People from Culturally and Linguistically Diverse backgrounds from other than main English Speaking countries.

Source: The Post Programme Monitoring Survey conducted three months after job seekers cease assistance.

## Job Matching

Table 1.5 shows the employment outcomes achieved by job seekers who were placed in an eligible job

between 1 July 2001 and 30 June 2002 and outcomes achieved three months later, up to 30 September 2002.

**Table 1.5: Job Matching: Post assistance outcomes year to end September 2002<sup>1</sup>**

Job seeker characteristics	Employment (%)	Education & Training (%)	Positive Outcomes <sup>2</sup> (%)	Placements <sup>3</sup> (number)
<b>Age group (years)</b>				
15 to 20	65.1	20.5	73.1	53,535
21 to 24	65.6	13.3	70.6	38,219
25 to 34	66.2	9.9	70.0	65,789
35 to 49	67.0	7.5	69.8	63,151
50 or more	65.1	5.5	67.4	18,262
<b>Duration on income support (months)<sup>3</sup></b>				
0 to less than 6	66.8	10.8	71.2	72,422
6 to less than 12	58.4	9.6	63.2	19,445
12 to less than 24	56.2	7.7	60.4	16,001
24 to less than 36	54.8	7.1	58.9	8,094
36 or more	52.1	5.7	55.6	20,462
<b>Educational attainment<sup>3</sup></b>				
Less than Year 10	54.0	5.6	57.4	27,346
Year 10 or 11	60.0	7.2	63.6	57,083
Year 12	67.5	14.2	73.5	26,897
Post Secondary	64.9	11.5	69.6	24,820
Unknown	65.7	19.9	65.7	278
<b>Gender</b>				
Male	62.3	9.0	66.4	150,775
Female	71.5	14.3	76.1	88,181
<b>Equity groups<sup>3</sup></b>				
Disability	55.4	8.2	59.8	14,396
Indigenous	48.9	5.8	52.2	6,403
CALD <sup>4</sup>	59.9	10.4	65.5	15,178
Sole Parents	61.6	10.7	68.0	3,173
<b>Job Network Eligible (JNE)<sup>5</sup></b>	<b>61.3</b>	<b>9.2</b>	<b>65.6</b>	<b>136,424</b>
<b>Job Matching Only (JMO)<sup>6</sup></b>	<b>72.9</b>	<b>14.0</b>	<b>77.2</b>	<b>102,532</b>
<b>Total</b>	<b>66.1</b>	<b>11.2</b>	<b>70.4</b>	<b>238,956</b>

1. Job Matching outcomes are for job seekers placed in an eligible Job Matching job between 1 July 2001 and 30 June 2002 and outcomes achieved by 30 September 2002. For job seekers who achieved a Job Matching placement within three months of leaving labour market assistance such as apprenticeships and traineeships, Job Search Training, Intensive Assistance and Work for the Dole, the outcome is excluded from Job Matching but included under the programme or service they participated in. Job Matching outcomes are derived from a sample survey of job seekers placed in Job Matching vacancies. Outcomes estimates are based on a 25% sample of job seekers.
2. Positive outcomes include employment and education/training outcomes. Positive outcomes are less than the sum of employment and education/training outcomes because some job seekers achieve both an employment and an education/training outcome. Positive and employment outcomes exclude indigenous job seekers who return to Community Development Employment Projects (CDEP) after leaving labour market assistance.
3. Outcomes refer to Job Network Eligible (JNE) job seekers only as educational attainment and equity group details are not recorded for Job Matching Only (JMO) and JMO job seekers are not on income support. Equity groups are not mutually exclusive.
4. People from Culturally and Linguistically Diverse backgrounds from other than main English Speaking countries.
5. Includes Job Network Eligible (JNE) job seekers who may be eligible for other Job Network services.
6. Includes Job Matching Only (JMO) job seekers who are only eligible for Job Matching services.

Source: The Post Programme Monitoring Survey conducted three months after job seekers cease assistance.

## New Enterprise Incentive Scheme

Table 1.6 shows the post assistance outcomes achieved by those who left the New Enterprise Incentive Scheme (NEIS) between 1 July 2001 and 30 June 2002 and outcomes achieved three months later, up to 30 September 2002.

Traditionally NEIS has always experienced higher outcomes compared to other types of labour market assistance. This is due in part to the careful selection of viable businesses by NEIS providers prior to the commencement in assistance, as well as the characteristics of job seekers involved.

**Table 1.6: New Enterprise Incentive Scheme: Post assistance outcomes year to end September 2002<sup>1</sup>**

Job seeker characteristics	Employment			Education & Training (%)	Positive Outcomes <sup>3</sup> (%)	Exits (number)
	Self Employed <sup>2</sup> (%)	Employed (%)	Total Employed (%)			
<b>Age Group (years)</b>						
15 to 20	na	na	na	na	na	na
21 to 24	59.3	20.7	80.0	9.7	81.9	444
25 to 34	69.1	11.8	80.8	7.6	82.2	2,024
35 to 49	71.2	9.3	80.5	6.2	81.8	2,818
50 or more	65.1	7.2	72.3	6.5	73.1	919
<b>Duration on income support (months)</b>						
0 to less than 6	71.2	12.2	83.4	8.6	84.8	2,929
6 to less than 12	65.9	12.4	78.4	5.8	79.7	1,139
12 to less than 24	67.5	9.8	77.4	7.2	78.9	791
24 to less than 36	68.7	6.4	75.0	4.3	75.7	671
36 or more	63.9	4.9	68.8	4.0	70.1	768
<b>Educational attainment</b>						
Less than Year 10	65.1	7.9	73.1	2.6	73.7	485
Year 10 or 11	65.6	10.8	76.4	4.7	77.3	1,595
Year 12	69.2	9.4	78.6	9.4	80.6	1,209
Post Secondary	70.6	11.1	81.7	7.8	83.1	3,009
<b>Gender</b>						
Males	70.4	10.2	80.6	6.1	81.7	3,651
Females	66.4	10.8	77.2	7.9	78.7	2,647
<b>Equity Groups<sup>4</sup></b>						
Disability	63.2	7.8	70.9	5.9	71.9	698
Indigenous	na	na	na	na	na	na
CALD <sup>5</sup>	68.1	7.9	76.1	6.6	77.5	997
Sole Parents	63.8	7.2	70.9	6.8	72.7	222
<b>Total</b>	<b>68.6</b>	<b>10.5</b>	<b>79.1</b>	<b>6.9</b>	<b>80.4</b>	<b>6,298</b>

1. Job seekers who left NEIS placements between 1 July 2001 and 30 June 2002 and outcomes achieved by 30 September 2002.

2. Includes a small proportion of participants who are self employed but in a business not set up under NEIS.

3. Positive outcomes include employment and education/training outcomes. Positive outcomes are less than the sum of employment and education/training outcomes because some job seekers achieve both an employment and an education/training outcome. Positive and employment outcomes exclude indigenous job seekers who return to Community Development Employment Projects (CDEP) after leaving labour market assistance.

4. Equity groups are not mutually exclusive.

5. People from Culturally and Linguistically Diverse backgrounds from other than main English Speaking countries.

na Not available as the estimate is based on a small number of known outcomes.

Source: The Post Programme Monitoring Survey conducted three months after job seekers cease assistance.

## Work for the Dole

The Work for the Dole (WfD) Programme aims to develop the work habits of participants through involving them in quality projects that are of value to the community. Employment outcomes are not part of the programme's immediate objectives but are included here as they demonstrate the success of work experience and increased job search activity. Outcomes relate to WfD participants referred to Community Work Coordinators (CWC).

Job seekers are now required to participate in WfD for up to six months over a twelve month period. This

means that job seekers can participate in a number of projects with different CWC's before completing their placement.

For the purposes of PPM, job seekers are surveyed whenever they have a break between CWC placements of more than 3 months and in relation to their last CWC placement in the twelve month period.

Job seekers aged 35 years or more who participate in Work for the Dole are volunteers.

**Table 1.7: Work for the Dole: Post assistance outcomes year to end September 2002<sup>1</sup>**

Job seeker characteristics	Employment (%)	Education & Training (%)	Positive Outcomes <sup>2</sup> (%)	Exits (number)
<b>Age group (years)</b>				
15 to 20	26.8	16.7	39.8	11,820
21 to 24	26.9	13.4	37.2	18,416
25 to 34	18.8	8.7	25.9	19,793
35 to 49	22.7	9.0	30.5	1,530
50 or more	15.7	4.9	19.9	508
<b>Duration on income support (months)</b>				
0 to less than 6	34.4	17.4	47.4	6,612
6 to less than 12	33.1	15.5	45.0	8,140
12 to less than 24	25.5	13.0	35.7	13,343
24 to less than 36	21.5	11.5	30.4	7,556
36 or more	14.0	7.7	20.5	16,416
<b>Educational attainment</b>				
Less than Year 10	14.3	5.9	19.4	8,764
Year 10 or 11	19.8	7.9	26.4	20,389
Year 12	28.1	17.6	41.6	14,203
Post Secondary	30.5	15.9	42.8	8,711
<b>Gender</b>				
Males	22.5	10.3	30.9	37,503
Females	25.6	15.6	37.2	14,564
<b>Equity groups<sup>3</sup></b>				
Disability	16.7	9.5	24.5	6,031
Indigenous	10.9	11.5	21.2	2,149
CALD <sup>4</sup>	22.5	21.3	40.6	4,307
Sole Parents	8.1	3.7	11.1	838
<b>Total</b>	<b>23.5</b>	<b>12.0</b>	<b>32.9</b>	<b>52,067</b>

1. Job seekers who left a Work for the Dole project between 1 July 2001 and 30 June 2002 and outcomes achieved by 30 September 2002.

2. Positive outcomes include employment and education/training outcomes. Positive outcomes are less than the sum of employment and education/training outcomes because some job seekers achieve both an employment and an education/training outcome. Positive and employment outcomes exclude indigenous job seekers who return to Community Development Employment Projects (CDEP) after leaving labour market assistance.

3. Equity groups are not mutually exclusive.

4. People from Culturally and Linguistically Diverse backgrounds from other than main English Speaking countries.

Source: The Post Programme Monitoring Survey conducted three months after job seekers cease assistance.

## Section 2: Access to and Participation in Labour Market Assistance

### Type of labour market assistance

Table 2.1 shows the commencements in Job Network services and other types of labour market assistance between the year to end September 2001 and the year to end September 2002.

The table also shows the proportion of commencements by job seekers who had been receiving income support [Newstart and Youth Allowance (Other)] for 12 months or more (ie long term unemployed).

**Table 2.1: Participation by type of labour market assistance in each of the past two years<sup>1</sup>**

	Year to end September 2001		Year to end September 2002	
	Commencements (number)	Proportion of long term recipients <sup>2</sup> (%)	Commencements (number)	Proportion of long term recipients <sup>2</sup> (%)
<b>Labour market assistance</b>				
Intensive Assistance	280,618	54.7	284,988	53.6
Job Search Training	79,123	14.4	80,832	10.6
Job Matching <sup>3</sup>	320,257	24.8	321,249	26.9
Job Network Eligible (JNE)	194,863	35.9	200,533	38.9
Job Matching Only (JMO)	121,575	na	116,542	na
NEIS	6,113	36.9	6,388	32.9
Self Employment Development Scheme	1,317	60.5	1,769	60.0
Work for the Dole	59,038	75.1	61,556	74.5
IEP - STEP	4,704	39.8	3,888	46.0
IEP - Wage Assistance	1,649	34.9	2,224	36.8
Community Work Placements <sup>4</sup>	-	-	487	86.2
Transition to Work <sup>4</sup>	-	-	3,281	21.9
Training Accounts <sup>4</sup>	-	-	1,422	na
Job Search Training	-	-	160	na
Intensive Assistance	-	-	1,205	na
Indigenous Employment Centres	-	-	57	na
<b>Training Credits (Work for the Dole only)<sup>4</sup></b>	-	-	771	na

1. Commencement or placement of job seekers in labour market assistance funded by DEWR for the two years of 1 October 2000 to 30 September 2001 and 1 October 2001 to 30 September 2002.

2. The proportion of job seekers who have been registered as unemployed for twelve months or more and have been receiving income support including Newstart, Youth Allowance (Other) or other types of income support.

3. Job Matching total is greater than the sum of JNE and JMO as it includes commencements in apprenticeships and traineeships. Job Network Eligible (JNE) are job seekers who may be eligible for all Job Network services. Job Matching Only (JMO) are job seekers who are only eligible for Job Matching services.

4. Transition to Work, Community Work Placements, Training Accounts and Training Credits commenced in July 2002 as part of the Australians Working Together strategy.

na – not available.

Source: DEWR administrative systems.

## Access to Job Matching

Access to services and programmes by job seekers with different characteristics will depend on their eligibility and on their assessed capacity to benefit from the assistance provided. To ensure equity of access for job seekers with different characteristics, the proportion in assistance is compared to their proportion of the eligible population.

Job seekers with particular characteristics may be under-represented in some types of assistance but over-represented in others. Hence, it is important to look at all types of assistance in assessing equity of assistance. For example, while indigenous job seekers may be under-represented in some types of assistance, other more specific programmes are directed towards addressing their particular needs.

Table 2.2 shows, for a range of job seeker characteristics for Job Network Eligible job seekers, the proportion that were eligible for services on 30 September 2002 and the proportion that received a placement under Job Matching in the year to end September 2002. For example, 19% of those on all income support types were aged 15 to 20 years and these accounted for over a quarter of all Job Matching placements during this time period.

This is shown for all income support types and separately for those on the activity tested payments Newstart and Youth Allowance (Other). All income support types include some job seekers who are not subject to the activity test and volunteer to participate in Job Network services.

**Table 2.2: Access to Job Matching by JNE job seeker characteristics year to end September 2002<sup>1</sup>**

Job seeker characteristics	All income support types		Newstart/Youth Allowance (Other)	
	Eligibility for Job Matching <sup>2</sup> (%)	Placement in Job Matching <sup>2</sup> (%)	Eligibility for Job Matching <sup>3</sup> (%)	Placement in Job Matching <sup>3</sup> (%)
<b>Age group (years)</b>				
15 to 20	18.9	25.5	14.3	19.8
21 to 24	14.0	16.9	15.2	18.0
25 to 34	24.2	26.1	25.8	28.0
35 to 49	27.6	24.0	29.0	25.9
50 or more	15.2	7.4	15.7	8.3
Total	100.0	100.0	100.0	100.0
<b>Duration on income support (months)</b>				
0 to less than 6	30.2	43.1	30.4	37.6
6 to less than 12	18.2	18.0	16.9	18.9
12 to less than 24	18.0	15.8	17.4	17.1
24 to less than 36	10.1	7.2	10.2	8.0
36 or more	23.5	15.9	25.0	18.4
Total	100.0	100.0	100.0	100.0
<b>Educational attainment</b>				
Less than Year 10	23.6	22.0	23.8	20.6
Year 10 or 11	37.0	41.1	36.5	42.1
Year 12	19.1	20.3	18.4	19.8
Post secondary	20.3	16.6	21.2	17.5
Total	100.0	100.0	100.0	100.0
<b>Gender</b>				
Male	66.0	68.4	68.1	70.6
Female	34.0	31.6	31.9	29.4
Total	100.0	100.0	100.0	100.0
<b>Equity groups<sup>4</sup></b>				
Disability	20.1	9.4	19.7	9.9
Indigenous	6.4	4.6	6.3	4.7
CALD <sup>5</sup>	14.4	10.0	15.0	10.7
Sole parents	2.4	1.5	na	na

1. Placements in Job Matching vacancies between 1 October 2001 and 30 September 2002.

2. Includes job seekers registered with Centrelink as unemployed and in receipt of the activity tested allowances Newstart and Youth Allowance (Other) or other types of income support payments not subject to activity test requirements at 30 September 2002.

3. Job seekers in receipt of Newstart and Youth Allowance (Other) at 30 September 2002.

4. Equity groups are not mutually exclusive.

5. People from Culturally and Linguistically Diverse backgrounds from other than main English Speaking countries.

na – not applicable

Source: DEWR administrative systems.

## Access to Job Search Training

Table 2.3 shows, for a range of job seeker characteristics, the proportion of the population that were eligible for Job Search Training compared to the proportion commencing Job Search Training. This is shown for all income support categories and separately for those on the activity tested payments Newstart and Youth Allowance (Other).

All income support types include job seekers who are not subject to the activity test and volunteer to participate in Job Network services.

Only those job seekers assessed as eligible for Job Search Training under the Job Seeker Classification Instrument (JSCI) have been included in the eligible population.

For example, over 30% of those on all income support types were aged 15 to 20 years and these accounted for over 18% of all Job Search Training commencements in the year to end September 2002.

**Table 2.3: Access to Job Search Training by job seeker characteristics year to end September 2002<sup>1</sup>**

Job seeker characteristics	All income support categories		Newstart/Youth Allowance (Other)	
	Eligibility for Job Search Training <sup>2</sup> (%)	Commencement in Job Search Training <sup>2</sup> (%)	Eligibility for Job Search Training <sup>3</sup> (%)	Commencement in Job Search Training <sup>3</sup> (%)
<b>Age group (years)</b>				
15 to 20	30.1	18.1	21.5	17.5
21 to 24	19.1	19.3	21.8	19.5
25 to 34	26.0	30.4	29.2	30.7
35 to 49	19.5	25.0	21.6	25.1
50 or more	5.3	7.2	5.9	7.2
Total	100.0	100.0	100.0	100.0
<b>Duration on income support (months)</b>				
0 to less than 6	58.6	67.5	61.2	67.5
6 to less than 12	24.6	21.9	22.6	21.9
12 to less than 24	12.3	7.8	11.7	7.8
24 to less than 36	2.6	1.9	2.6	1.9
36 or more	1.8	0.9	1.9	0.9
Total	100.0	100.0	100.0	100.0
<b>Educational attainment</b>				
Less than Year 10	7.1	3.3	7.1	3.3
Year 10 or 11	31.9	31.6	30.8	31.5
Year 12	28.6	26.5	26.8	26.3
Post secondary	32.4	38.6	35.3	38.8
Total	100.0	100.0	100.0	100.0
<b>Gender</b>				
Male	63.0	67.3	65.2	67.8
Female	37.0	32.7	34.8	32.2
Total	100.0	100.0	100.0	100.0
<b>Equity groups<sup>4</sup></b>				
Disability	7.0	4.3	7.2	4.4
Indigenous	0.6	0.5	0.6	0.5
CALD <sup>5</sup>	9.2	11.8	9.8	11.8
Sole parents	2.1	0.5	na	na

1. Commencement of job seekers in Job Search Training between 1 October 2001 and 30 September 2002.

2. Includes job seekers registered with Centrelink as unemployed and in receipt of the activity tested allowances Newstart and Youth Allowance (Other) or other types of income support payments not subject to activity test requirements at 30 September 2002.

3. Job seekers in receipt of Newstart and Youth Allowance (Other) at 30 September 2002.

4. Equity groups are not mutually exclusive.

5. People from Culturally and Linguistically Diverse backgrounds from other than main English Speaking countries.

na – not applicable

Source: DEWR administrative systems.

## Access to Intensive Assistance

Table 2.4 shows, for a range of job seeker characteristics, the proportion of the population eligible for Intensive Assistance compared with the proportion commencing Intensive Assistance. This is shown for all income support categories and separately for those on the activity tested payments Newstart and Youth Allowance (Other).

Those on income support include job seekers who are not subject to the activity test and volunteer to participate in Job Network services.

As with Job Search Training, only those assessed as eligible for Intensive Assistance under the Job Seeker

Classification Instrument (JSCI) have been included in the eligible population.

For example, 14% of all income support types were aged 15 to 20 years and these accounted for 13% of all Intensive Assistance commencements in the year to end September 2002.

Job seekers assessed as having higher levels of disadvantage may be under-represented in Intensive Assistance but are able to access programmes administered by the Department of Family and Community Services for people with disabilities. This is reflected in the lower levels of access of job seekers with a disability and those in receipt of income support for 3 years or more.

**Table 2.4: Access to Intensive Assistance by job seeker characteristics year to end September 2002<sup>1</sup>**

Job seeker characteristics	All income support categories		Newstart/Youth Allowance (Other)	
	Eligibility for Intensive Assistance <sup>2</sup> (%)	Commencement in Intensive Assistance <sup>2</sup> (%)	Eligibility for Intensive Assistance <sup>3</sup> (%)	Commencement in Intensive Assistance <sup>3</sup> (%)
<b>Age group (years)</b>				
15 to 20	14.1	13.1	11.4	12.7
21 to 24	12.0	12.8	12.5	13.0
25 to 34	23.6	23.9	24.3	23.9
35 to 49	30.9	31.6	31.8	31.4
50 or more	19.4	18.6	20.0	19.0
Total	100.0	100.0	100.0	100.0
<b>Duration on income support (months)</b>				
0 to less than 6	14.8	32.4	14.4	31.1
6 to less than 12	15.1	14.0	14.3	14.0
12 to less than 24	21.2	17.6	20.5	17.8
24 to less than 36	13.9	9.4	14.1	9.6
36 or more	35.1	26.6	36.8	27.5
Total	100.0	100.0	100.0	100.0
<b>Educational attainment</b>				
Less than Year 10	31.6	27.5	31.6	27.6
Year 10 or 11	40.2	40.6	39.7	40.3
Year 12	14.5	16.1	14.6	16.2
Post secondary	13.6	15.8	14.1	15.9
Total	100.0	100.0	100.0	100.0
<b>Gender</b>				
Male	67.6	69.1	69.6	70.5
Female	32.4	30.9	30.4	29.5
Total	100.0	100.0	100.0	100.0
<b>Equity groups<sup>4</sup></b>				
Disability	18.6	12.6	18.9	12.6
Indigenous	9.2	7.8	8.9	7.6
CALD <sup>5</sup>	17.1	17.5	17.5	17.6
Sole parents	2.8	1.6	na	na

1. Commencement of job seekers in Intensive Assistance between 1 October 2001 and 30 September 2002.

2. Includes job seekers registered with Centrelink as unemployed and in receipt of the activity tested allowances Newstart and Youth Allowance (Other) or other types of income support payments not subject to activity test requirements at 30 September 2002.

3. Job seekers in receipt of Newstart and Youth Allowance (Other) at 30 September 2002.

4. Equity groups are not mutually exclusive.

5. People from Culturally and Linguistically Diverse backgrounds from other than main English Speaking countries.

na – not applicable

Source: DEWR administrative systems.

## Participation in NEIS

Table 2.5 shows, for a range of job seeker characteristics, the proportion in the eligible population and the proportion commencing NEIS. This is shown only for those on an eligible allowance, such as Newstart and Youth Allowance (other) and who are 18 years of age or older.

NEIS is not targeted directly at job seekers with any particular characteristics. As is the case with Job

Matching, job seekers with particular characteristics may be under-represented in some types of assistance but over-represented in others. Hence, it is important to look at all types of assistance in assessing equity of assistance. For example, while indigenous job seekers may be under-represented in some types of assistance, other more specific programmes are directed towards addressing their particular needs.

**Table 2.5: Access to NEIS by job seeker characteristics year to end September 2002<sup>1</sup>**

Job seeker characteristics	Eligibility for NEIS <sup>2</sup> (%)	Commencement in NEIS (%)
<b>Age group (years)</b>		
15 to 20	17.5	1.8
21 to 24	14.0	8.2
25 to 34	24.1	34.7
35 to 49	28.2	41.7
50 or more	16.2	13.6
Total	100.0	100.0
<b>Duration on income support (months)</b>		
0 to less than 6	25.6	9.2
6 to less than 12	17.9	27.6
12 to less than 24	20.4	40.6
24 to less than 36	10.5	9.2
36 or more	25.6	13.4
Total	100.0	100.0
<b>Educational attainment</b>		
Less than Year 10	23.2	6.0
Year 10 or 11	36.6	23.4
Year 12	19.8	19.6
Post secondary	20.4	51.0
Total	100.0	100.0
<b>Gender</b>		
Male	64.7	58.0
Female	35.3	42.0
Total	100.0	100.0
<b>Equity groups<sup>3</sup></b>		
Disability	21.5	28.5
Indigenous	6.8	2.7
CALD <sup>4</sup>	14.9	15.4
Sole parents	3.4	3.8

1. Commencement of job seekers in NEIS between 1 October 2001 and 30 September 2002.

2. Job seekers receiving Newstart and Youth Allowance (Other) and other eligible allowances and 18 or over as at 30 September 2002.

3. Equity groups are not mutually exclusive.

4. People from Culturally and Linguistically Diverse backgrounds from other than main English Speaking countries

na – not applicable.

Source: DEWR administrative systems.

## Participation in Work for the Dole

Table 2.6 shows, for a range of job seeker characteristics, the proportion in the eligible population and the proportion commencing Work for the Dole. This is shown only for those on the activity tested payments Newstart and Youth Allowance (Other).

Job seekers aged 35 years or more on Newstart Allowance may volunteer to participate in Work for

the Dole.

Job seekers are required to participate in WfD for up to six months over a twelve month period. This means that job seekers can participate in a number of different WfD projects and with different CWCs before completing their placement. Each time a job seeker starts with a CWC, a new commencement is recorded.

**Table 2.6: Access to Work for the Dole by job seeker characteristics year to end September 2002<sup>1</sup>**

Job seeker characteristics	Eligibility for Work for Dole <sup>2</sup> (%)	Commencement in Work for the Dole (%)
<b>Age group (years)</b>		
15 to 20	16.3	21.0
21 to 24	16.2	32.8
25 to 34	24.7	36.7
35 to 49	27.7	8.2
50 or more	15.2	1.3
Total	100.0	100.0
<b>Duration on income support (months)</b>		
0 to less than 6	27.3	9.3
6 to less than 12	18.0	16.1
12 to less than 24	19.2	27.9
24 to less than 36	9.8	12.6
36 or more	25.6	34.0
Total	100.0	100.0
<b>Educational attainment</b>		
Less than Year 10	23.6	17.8
Year 10 or 11	36.3	39.2
Year 12	19.6	26.3
Post secondary	20.5	16.8
Total	100.0	100.0
<b>Gender</b>		
Male	66.9	72.7
Female	33.1	27.3
Total	100.0	100.0
<b>Equity groups<sup>3</sup></b>		
Disability	19.3	12.4
Indigenous	6.9	4.1
CALD <sup>4</sup>	15.4	8.6
Sole parents	na	na

5. Commencement of job seekers in Work for the Dole between 1 October 2001 and 30 September 2002.

6. Job seekers receiving Newstart and Youth Allowance (Other) as at 30 September 2002.

7. Equity groups are not mutually exclusive.

8. People from Culturally and Linguistically Diverse backgrounds from other than main English Speaking countries

na – not applicable.

Source: DEWR administrative systems.

## Section 3: Participation and Outcomes by Region

### Participation in labour market assistance by region

This section presents data on participation by job seekers in labour market assistance for the DEWR Labour Market Regions used during the second contract period for Job Network. A map of DEWR regions is included in the Technical Notes of this report.

Reporting at a regional level is restricted to the main types of Job Network assistance and Work for the Dole.

Table 3.1 provides details of placements in Job Matching jobs and commencements in Job Search Training, Intensive Assistance and Work for the Dole.

The number of placements and commencements in the various types of labour market assistance will depend on the size of the region, labour market conditions and the relative disadvantage of job seekers in the region.

**Table 3.1: Commencements in labour market assistance by region year to end September 2002<sup>1</sup>**

DEWR Region	Job Matching (JNE) <sup>2</sup> (Number)	Job Search Training (Number)	Intensive Assistance (Number)	Work for the Dole (Number)
Sydney	23,766	16,398	43,109	7,528
Hunter and North Coast	11,620	4,521	25,089	4,732
Illawarra and SE NSW	4,985	2,407	8,404	1,861
Western NSW	9,428	1,968	8,186	1,692
Riverina	3,366	616	3,025	594
<b>New South Wales</b>	<b>53,165</b>	<b>25,910</b>	<b>87,813</b>	<b>16,407</b>
Melbourne	27,681	13,620	42,741	9,871
Eastern Victoria	8,104	2,176	8,192	1,452
Western Victoria	11,668	2,919	14,072	2,023
<b>Victoria</b>	<b>47,453</b>	<b>18,715</b>	<b>65,005</b>	<b>13,346</b>
Brisbane	29,659	12,690	37,270	11,786
Southern Queensland	10,583	2,226	10,743	2,159
Central and Northern QLD	14,625	3,982	14,390	3,403
<b>Queensland</b>	<b>54,867</b>	<b>18,898</b>	<b>62,403</b>	<b>17,348</b>
Perth	11,437	5,873	18,507	4,809
South Western Australia	2,934	735	3,787	891
Greater Western Australia	2,228	495	3,092	422
<b>Western Australia</b>	<b>16,599</b>	<b>7,103</b>	<b>25,386</b>	<b>6,122</b>
Adelaide	12,049	4,941	19,794	3,750
South Australia Country	6,646	1,367	7,916	1,194
<b>South Australia</b>	<b>18,695</b>	<b>6,308</b>	<b>27,710</b>	<b>4,944</b>
<b>Tasmania</b>	<b>6,180</b>	<b>1,916</b>	<b>11,757</b>	<b>2,438</b>
<b>Northern Territory</b>	<b>2,172</b>	<b>618</b>	<b>2,629</b>	<b>326</b>
<b>Australian Capital Territory</b>	<b>1,399</b>	<b>1,364</b>	<b>2,285</b>	<b>625</b>
<b>Australia</b>	<b>200,530</b>	<b>80,832</b>	<b>284,988</b>	<b>61,556</b>

1. Commencement or placement in labour market assistance between 1 October 2001 and 30 September 2002.

2. Job Matching for JNE job seeker placements are included while JMO job seeker placements have been excluded.

Source: DEWR administrative systems.

## Job Matching placements by region

Table 3.2 shows the number of vacancies notified on the Australian Job Search (AJS) database for the month of September 2002 by DEWR region, State and Territory and nationally.

In addition to the 66,957 new vacancies lodged on the AJS, some vacancies lodged in the preceding month remained active during September.

In total, Job Network members listed 764,271 job vacancies on the Australian Job Search database in the year to end September 2002.

Also shown are Job Matching placements for both Job Network eligible (JNE) and Job Matching only (JMO) job seekers in each region in the year to end September 2002. JMOs accounted for over one-third of all Job Matching placements.

**Table 3.2: Job Matching placements by region year to end September 2002**

DEWR Region	Vacancies notified on AJS in September 2002 <sup>1</sup> (Number)	Job Matching <sup>2</sup> (number)			Share of placements filled by JMO clients (%)
		JNE <sup>3</sup>	JMO <sup>4</sup>	Total <sup>5</sup>	
Sydney	11,328	23,766	13,127	37,234	35.3
Hunter and North Coast	3,789	11,620	4,367	16,270	26.8
Illawarra and SE NSW	1,565	4,985	2,732	7,823	34.9
Western NSW	2,073	9,428	8,587	18,304	46.9
Riverina	903	3,366	3,282	6,771	48.5
<b>New South Wales</b>	<b>19,658</b>	<b>53,165</b>	<b>32,095</b>	<b>86,402</b>	<b>37.1</b>
Melbourne	10,860	27,681	14,098	42,524	33.2
Eastern Victoria	1,798	8,104	6,993	15,241	45.9
Western Victoria	2,633	11,668	7,627	19,640	38.8
<b>Victoria</b>	<b>15,291</b>	<b>47,453</b>	<b>28,718</b>	<b>77,405</b>	<b>37.1</b>
Brisbane	11,635	29,659	15,826	45,945	34.4
Southern Queensland	2,667	10,583	7,121	17,840	39.9
Central and Northern QLD	4,677	14,625	10,934	25,696	42.6
<b>Queensland</b>	<b>18,979</b>	<b>54,867</b>	<b>33,881</b>	<b>89,481</b>	<b>37.9</b>
Perth	3,807	11,437	4,733	16,252	29.1
South Western Australia	841	2,934	1,991	4,942	40.3
Greater Western Australia	1,086	2,228	2,641	4,885	54.1
<b>Western Australia</b>	<b>5,734</b>	<b>16,599</b>	<b>9,365</b>	<b>26,079</b>	<b>35.9</b>
Adelaide	2,997	12,049	3,691	16,161	22.8
South Australia Country	1,412	6,646	3,838	10,665	36.0
<b>South Australia</b>	<b>4,409</b>	<b>18,695</b>	<b>7,529</b>	<b>26,826</b>	<b>28.1</b>
<b>Tasmania</b>	<b>1,285</b>	<b>6,180</b>	<b>2,311</b>	<b>8,774</b>	<b>26.3</b>
<b>Northern Territory</b>	<b>1,042</b>	<b>2,172</b>	<b>1,967</b>	<b>4,158</b>	<b>47.3</b>
<b>Australian Capital Territory</b>	<b>559</b>	<b>1,399</b>	<b>676</b>	<b>2,124</b>	<b>31.8</b>
<b>Australia</b>	<b>66,957</b>	<b>200,530</b>	<b>116,542</b>	<b>321,249</b>	<b>36.3</b>

1. Vacancies notified on the Australian Job Search database for the month of September 2002.

2. Placements in eligible Job Matching vacancies between 1 October 2001 and 30 September 2002.

3. Job Network Eligible (JNE) job seekers who may be eligible for all Job Network services.

4. Job Matching Only (JMO) are job seekers who are eligible only for Job Matching services.

5. Total is greater than the sum of JNE and JMO placements as this figure includes apprenticeships and traineeships.

Source: DEWR administrative systems.

## Labour market assistance by region

Table 3.3 shows the proportion of Newstart and Youth Allowance (Other) recipients as at September 2002 compared to the proportion of Job Matching job placements for Job Network eligible job seekers and

commencements in Job Search Training, Intensive Assistance and Work for the Dole. This is provided on a DEWR regional and State and Territory basis.

**Table 3.3: Comparison of labour market assistance by region year to end September 2002<sup>1</sup>**

DEWR Region	Newstart/ Youth Allowance (Other) recipients <sup>2</sup> (%)	Job Matching (JNE) <sup>3</sup> (%)	Job Search Training (%)	Intensive Assistance (%)	Work for the Dole (%)
Sydney	15.0	11.9	20.3	15.1	12.2
Hunter and North Coast	8.1	5.8	5.6	8.8	7.7
Illawarra and SE NSW	3.1	2.5	3.0	2.9	3.0
Western NSW	3.1	4.7	2.4	2.9	2.7
Riverina	1.1	1.7	0.8	1.1	1.0
<b>New South Wales</b>	<b>30.5</b>	<b>26.5</b>	<b>32.1</b>	<b>30.8</b>	<b>26.7</b>
Melbourne	15.7	13.8	16.8	15.0	16.0
Eastern Victoria	2.4	4.0	2.7	2.9	2.4
Western Victoria	4.1	5.8	3.6	4.9	3.3
<b>Victoria</b>	<b>22.3</b>	<b>23.7</b>	<b>23.2</b>	<b>22.8</b>	<b>21.7</b>
Brisbane	13.4	14.8	15.7	13.1	19.1
Southern Queensland	2.3	5.3	2.8	3.8	3.5
Central and Northern QLD	5.0	7.3	4.9	5.0	5.5
<b>Queensland</b>	<b>20.8</b>	<b>27.4</b>	<b>23.4</b>	<b>21.9</b>	<b>28.2</b>
Perth	7.5	5.7	7.3	6.5	7.8
South Western Australia	3.0	1.5	0.9	1.3	1.4
Greater Western Australia	1.4	1.1	0.6	1.1	0.7
<b>Western Australia</b>	<b>11.9</b>	<b>8.3</b>	<b>8.8</b>	<b>8.9</b>	<b>9.9</b>
Adelaide	6.2	6.0	6.1	6.9	6.1
South Australia Country	1.5	3.3	1.7	2.8	1.9
<b>South Australia</b>	<b>7.7</b>	<b>9.3</b>	<b>7.8</b>	<b>9.7</b>	<b>8.0</b>
<b>Tasmania</b>	<b>3.7</b>	<b>3.1</b>	<b>2.4</b>	<b>4.1</b>	<b>4.0</b>
<b>Northern Territory</b>	<b>2.2</b>	<b>1.1</b>	<b>0.8</b>	<b>0.9</b>	<b>0.5</b>
<b>Australian Capital Territory</b>	<b>1.0</b>	<b>0.7</b>	<b>1.7</b>	<b>0.8</b>	<b>1.0</b>
<b>Australia</b>	<b>100.0</b>	<b>100.0</b>	<b>100.0</b>	<b>100.0</b>	<b>100.0</b>

1. Commencement or placement of job seekers in labour market assistance between 1 October 2001 and 30 September 2002.

2. Job Seekers receiving Newstart or Youth Allowance (Other) as at 30 September 2002.

3. Includes Job Network Eligible (JNE) job seekers who may be eligible for all Job Network services and excludes Job Matching Only (JMO) job seekers who are only eligible for Job Matching services.

Source: DEWR administrative systems.

## Employment outcomes by region

Table 3.4 shows unsubsidised employment outcomes for job seekers who ceased assistance between 1 July 2001 and 30 June 2002 and achieved by 30 September 2002. Employment outcomes are for Job Matching, Job Search Training, Intensive Assistance and Work for the Dole.

Job Matching includes Job Network Eligible and Job Matching Only job seekers. Outcomes are presented on a DEWR regional, State and Territory and national basis.

**Table 3.4: Regional labour market post assistance employment outcomes year to end September 2002<sup>1</sup>**

DEWR Region	Job Matching (%) <sup>2</sup>	Job Search Training <sup>3</sup> (%)	Intensive Assistance <sup>3</sup> (%)	Work for the Dole <sup>3</sup> (%)
Sydney	65.2	39.0	39.1	21.5
Hunter and North Coast	63.5	38.4	39.6	17.4
Illawarra and SE NSW	70.7	43.8	38.9	19.9
Western NSW	64.4	38.3	36.1	19.4
Riverina	62.4	41.1	42.2	21.3
<b>New South Wales</b>	<b>65.1</b>	<b>39.3</b>	<b>39.1</b>	<b>19.8</b>
Melbourne	63.9	37.5	44.0	25.3
Eastern Victoria	63.4	44.2	47.4	23.8
Western Victoria	72.5	44.5	47.7	22.6
<b>Victoria</b>	<b>66.0</b>	<b>39.2</b>	<b>45.3</b>	<b>24.7</b>
Brisbane	69.8	39.1	43.8	27.7
Southern Queensland	65.1	41.2	40.9	23.6
Central and Northern QLD	65.5	45.4	40.5	23.8
<b>Queensland</b>	<b>67.9</b>	<b>40.6</b>	<b>42.5</b>	<b>26.4</b>
Perth	65.3	37.2	40.9	24.8
South Western Australia	65.4	34.8	42.1	25.0
Greater Western Australia	62.2	34.2	31.7	24.9
<b>Western Australia</b>	<b>64.8</b>	<b>36.7</b>	<b>39.8</b>	<b>24.9</b>
Adelaide	67.4	43.6	44.6	22.4
South Australia Country	65.4	41.6	47.6	21.4
<b>South Australia</b>	<b>66.7</b>	<b>43.1</b>	<b>45.5</b>	<b>22.2</b>
<b>Tasmania</b>	<b>59.5</b>	<b>40.8</b>	<b>43.8</b>	<b>19.3</b>
<b>Northern Territory</b>	<b>70.7</b>	<b>42.8</b>	<b>31.8</b>	<b>19.7</b>
<b>Australian Capital Territory</b>	<b>63.4</b>	<b>44.8</b>	<b>40.0</b>	<b>23.1</b>
<b>Australia</b>	<b>66.1</b>	<b>39.8</b>	<b>42.2</b>	<b>23.5</b>

1. Employment outcomes exclude indigenous job seekers who return to a Community Development Employment Projects (CDEP) after leaving labour market assistance.
2. Job Matching outcomes are for job seekers placed in an eligible Job Matching job between 1 July 2001 and 30 June 2002 and outcomes achieved by 30 September 2002. For job seekers who achieved a Job Matching placement within three months of leaving labour market assistance such as Job Search Training, Intensive Assistance and Work for the Dole, the outcome is excluded from Job Matching but included under the programme or service they participated in. Outcomes for apprenticeships and traineeships are excluded.
3. Post assistance employment outcomes relate to job seekers who ceased Intensive Assistance, Job Search Training or Work for the Dole between 1 July 2001 and 30 June 2002 and outcomes achieved by 30 September 2002.

Source: The Post Programme Monitoring Survey conducted three months after job seekers cease assistance.

## Section 4: Impact on Income Support Recipients

### Number of income support recipients

An important goal of employment assistance is to reduce or remove employment barriers experienced by job seekers so they can compete effectively for jobs. Higher levels of employment assistance are provided to the most disadvantaged job seekers.

While this report focuses mainly on the outcomes achieved by individual forms of assistance, it is also important to note that other factors, such as administrative changes and economic conditions, also have a significant impact on the number of income support recipients.

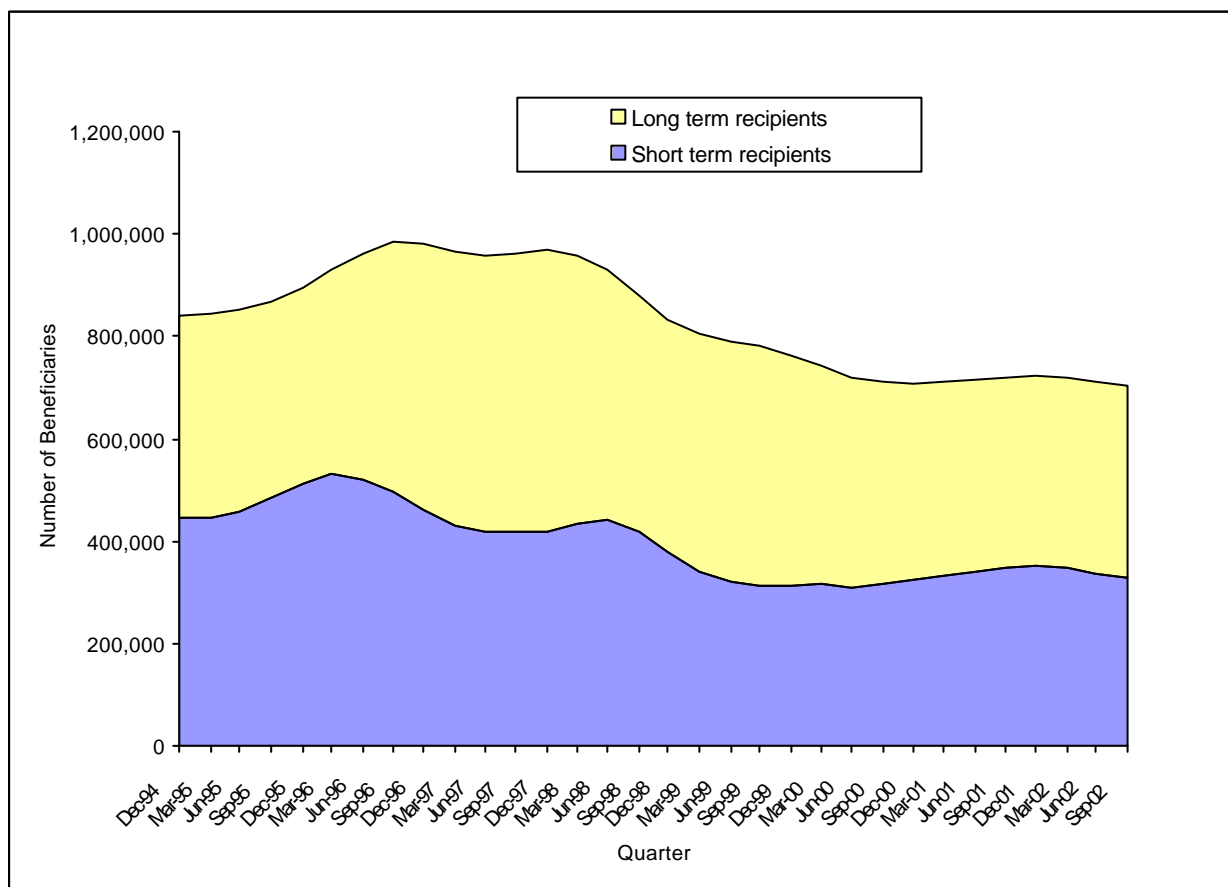
Figure 4.1 shows the changes over time in the number of short and long term income support recipients. Many long term recipients (in receipt of Newstart and Youth Allowance (Other) for 12 months or more) will have had a job at some time

over the last 12 months. These job seekers are reclassified as short term recipients only if they remain totally off benefits for a continuous period of more than 13 weeks.

Hence, long term recipients should not be confused with the long term unemployed as defined by the Australian Bureau of Statistics. The long term unemployed are people currently looking for work who have not had a job that lasted for 2 weeks or more in the last year.

Data from the Department of Family and Community Services show that in the 12 months to the end of September 2002, the number of people in receipt of Newstart or Youth Allowance (Other) decreased by over 44,400 to just over 644,700 job seekers. While the number of job seekers who were long term recipients increased by nearly 1,500 the number of short term recipients decreased by over 45,900.

**Figure 4.1: Number of Income Support Recipients<sup>1</sup>**



Source: Trend series based on data from DEWR administrative system.

- Figures quoted in the text are from the Department of Family and Community Services: "Labour Market and Related Payments a monthly profile, September 2002".

## Technical Notes

### Data sources

The Department uses a number of data sources to determine the outcomes achieved by job seekers during and after they have ceased labour market assistance.

*Post Programme Monitoring (PPM) surveys* have been undertaken since 1987 and used to assess the employment and education status of former programme participants three months after they exit assistance. The PPM survey attempts a full enumeration of all former programme participants except in the case of Job Matching where a sample of around 10% of job placements are followed up. Job seekers who leave employment assistance and then proceed to another employment assistance place before selection in the PPM survey, are excluded from the survey. For monitoring purposes these job seekers are considered to be in further assistance.

The overall response rate for the PPM survey, at around 60%, provides outcomes estimates that are generally accurate to within plus or minus 1 percentage point at the National level.

DEWR administrative systems record details of placements, commencements and paid outcomes for labour market assistance.

The PPM outcomes for Intensive Assistance are derived from two sources - DEWR administrative systems and the PPM survey. The administrative system provides information on the primary and secondary paid interim outcomes for job seekers three months after their placement into a job. The PPM survey provides the employment and training status of job seekers three months after they exited assistance without having achieved a paid interim outcome. The addition of the paid interim and PPM survey outcomes data for unpaid exits provides the labour force status for participants at the three month point in time and is comparable to measurements for other types of employment assistance.

### Post Programme Monitoring Outcomes

#### PPM Measures of Outcomes

Table A below provides a summary of PPM Outcomes under current employment assistance (Job Network), mutual obligation arrangements (Work for the Dole) and a range of previous labour market programmes that operated in the mid-1990s (under the *Working Nation* banner). There are three measures of Outcomes rates:

- *employment* (the proportion of participants who achieved an employment outcome compared to all those who left assistance);
- *education and/or training* (the proportion of participants who achieved an education and/or training outcome compared to all those who left assistance); and
- *'positive' outcomes* (the proportion of participants who achieved an employment or education and training outcome compared to all those who left assistance).

#### Methodology for Measuring Outcomes Rates

In calculating PPM outcomes rates, a decision has to be made about the treatment of those participants who left the programme and went on to further assistance: whether they are included or excluded from the measure of outcomes:

- under past PPM methodology, this group was *excluded* from the measure. It is evident, however, that this resulted in higher outcomes rates when there was a high rate of churning between programmes (as reflected in the figures for "Further Assistance" in Table A);
- an improved methodology has been adopted that *includes* all participants who went on to further assistance. This provides a more comprehensive picture of what has happened to all participants in programmes.
  - this methodology is consistent with how the *cost per employment outcome* from programmes has always been measured in the Department's evaluations of labour market programmes.

Measures provided under the new methodology are set out in the final three right-hand columns of Table A. The previous estimates, based on the old method, are in the left-hand columns for comparative purposes only.

**Table A: PPM Outcomes (3 months) (%): Old and New Methods**

	Old Method			Further Assistance	New Method		
	Employment outcomes	Education & Training Outcomes	Positive Outcomes <sup>1</sup>		Employment outcomes	Education & Training Outcomes	Positive Outcomes <sup>2</sup>
<b>Job Network<sup>3</sup></b>							
Job Search Training	40.0	13.2	48.9	5.3	37.9	12.5	46.3
Intensive Assistance	35.9	7.9	42.4	2.6	35.0	7.7	41.3
NEIS	81.8	8.9	84.1	0.0	81.8	8.9	84.1
<b>Work for the Dole<sup>3</sup></b>	32.9	13.3	42.8	16.6	27.4	11.1	35.7
<b>Working Nation<sup>4</sup></b>							
Job Clubs	36.4	10.8	43.8	30.7	24.9	7.4	29.9
<b>Working Nation<sup>5</sup></b>	35.1	12.4	44.3	22.0	27.4	9.7	34.6
Job Skills	30.9	8.9	37.8	11.7	28.1	7.8	33.4
JobTrain	33.7	12.3	42.7	30.0	23.6	8.6	29.9
JobStart	52.8	6.4	56.3	8.5	48.3	5.9	51.5
LEAP	25.8	10.3	33.7	13.1	22.4	8.9	29.3
New Work Opportunities	21.0	5.2	24.8	14.8	17.9	4.4	21.1
SkillShare	36.9	14.0	47.0	17.8	30.3	11.5	38.6
Special Intervention	21.4	20.7	39.4	38.7	13.1	12.7	24.2

1. The proportion of participants that achieved an employment and/or education/ training outcome *excluding* those who went onto further assistance.

2. The proportion of participants that achieved an employment and/or education/ training outcome *including* those who went onto further assistance.

3. Outcomes achieved in the 1999-2000 financial year.

4. This relates to the Working Nation programme, Job Clubs, which is similar to Job Search Training: outcomes for 1995-96 financial year.

5. Working Nation programmes replaced by Intensive Assistance: outcomes are for 1995-96 financial year. The results show the weighted average for the seven programmes and for each programme.

Source: The Post Programme Monitoring Survey conducted 3 months after job seekers cease assistance and DEWR administrative systems.

## Labour Market Assistance

*Intensive Assistance:* provides individually tailored assistance for up to two years to eligible job seekers who are more disadvantaged in the labour market, to prepare for, and obtain, sustainable employment. The level of funding is based on the job seekers' level of disadvantage. There are two funding levels, A and B.

Job seekers who transferred to a new provider as a result of the second contract period are treated as a new commencement but as the job seekers period of assistance has not been completed, they are included in the PPM survey.

*Job Search Training:* provides training for three weeks in job search techniques (such as résumé preparation, interview techniques and presentation skills) to give unemployed people the skills and confidence to seek and obtain employment.

*Job Matching:* delivers labour exchange services to job seekers including canvassing for jobs and matching and placing suitable unemployed people to these jobs, as well as preparing résumés for job seekers.

*New Enterprise Incentive Scheme (NEIS):* provides support and training for eligible job seekers who wish to pursue the option of self-employment.

*Self-Employment Development Scheme (SEDS):* allow job seekers to undertake approved activities to develop self-employment opportunities for three months. The business viability is assessed by a NEIS Managing agent and approved by Centrelink.

*Indigenous Employment Programme:* replaced the Training for Aboriginals and Torres Strait Islanders Programme (TAP) and has several components. It includes Wage Assistance which is a wage subsidy paid to employers over 26 weeks providing on-going employment. In Structured Training and Employment Projects (STEP) employers in the private sector and regional and community based employment sponsor organisations provide at least 5 jobs, generally involving accredited training, usually a traineeship, to participants for a minimum period of 12 months.

*Indigenous Employment Centres:* help Community Development Employment Project participants find employment that has strong connections with the local community that is culturally relevant.

*Work for the Dole:* provides assistance for job seekers to develop work habits, generic work skills and gain work experience by participating in community projects and activities for up to 26 weeks over a 12 month period.

*Community Work placements:* assists job seekers in gain skills and work experience and provides access to additional benefits such as Training Credits and Passport to Employment after participating in voluntary work for a specified number of hours.

*Transition to Work Programme:* helps job seekers who are parents, carers and mature age people 50 years and over entering the workforce for the first time or returning to the workforce after an absence of 2 years or more.

*Training accounts:* helps mature age and indigenous job seekers who participate in Intensive Assistance, Job Search Training or with Indigenous Employment Centres improve their employment prospects through the provision of training.

*Training Credits:* provides job seekers who participate in Work for the Dole or Community Work Placement for a minimum of 16 weeks to up to 26 weeks with a training credit.

## Definitions

*Australian Job Search:* Lists all vacancies notified to the Job Network and provides information on Job Network members, is available in Centrelink and Job Network member offices and the DEWR Internet site.

*Community Development Employment Projects (CDEP):* administered by the Aboriginal and Torres Strait Islander Commission - a scheme generally providing opportunities for part time work paid at the equivalent of unemployment allowances to residents of indigenous communities in remote locations. Positive and employment outcomes exclude indigenous job seekers who return to a CDEP after leaving labour market assistance.

*Community Work Coordinators:* are contracted to develop Community Work placements and Work for the Dole projects/activities and manage the placement of eligible job seekers into those projects/activities.

*Educational attainment:* refers to the highest educational level completed by job seekers. If a job seeker did not complete Year 12 then they will be included in the Year 10 category.

*Eligible vacancy:* is a job vacancy listed on the Australian Job Search database that are eligible for a payment under Job Matching.

*Further Assistance:* includes job seekers who proceed to another DEWR or DEST funded employment assistance within three months of exiting other employment assistance. It includes commencements in Job Search Training, Intensive Assistance, New Apprenticeships, NEIS, Work for the Dole, Green Corps, Advanced English for Migrants Programme (AEMP) and IEP - STEP and IEP - Wage Assistance. Job Matching is not regarded as further assistance.

*Income support recipients:* includes job seekers registered with Centrelink as unemployed and in receipt of Newstart Allowance (NSA) or job seekers

aged 15 to 24 not in full-time education and in receipt of Youth Allowance (YA).

*Job Matching Only (JMO):* Job seekers, irrespective of income support who are eligible for Job Matching Only services but not eligible for other Job Network services. JMOs can renew their registration as unemployed every three months with either Centrelink or Job Network members.

*Job Matching placements:* include placements provided under Job Matching and job placements under Intensive Assistance.

*Job Network Eligible (JNE):* Job seekers who are receiving income support payments, and young people not in full-time study irrespective of income support. CDEP participants are eligible for Job Matching services. These people may be eligible for other Job Network services, subject to eligibility requirements.

*Job Seeker Classification Instrument (JSCI):* a measurement of a job seeker's relative disadvantage in obtaining employment and is used to determine the level of labour market assistance required.

*Long term recipients:* Job seekers who have been registered with Centrelink as unemployed for 12 months or more and receiving income support.

*CALD:* People from Culturally and Linguistically Diverse backgrounds from other than main English Speaking countries.

*Outcomes qualifying for a claim for payment:* Intensive Assistance or Job Search Training outcomes where the conditions for a claim for a paid outcome have been met. An actual claim may or may not have been made. This has not been included in this report.

*Placed, awaiting an outcome:* Placement of an Intensive Assistance or Job Search Training job seeker in employment or study but where the 13 week paid outcome mark has yet to be reached. This has not been included in this report.

*Paid Interim Outcomes:* Intensive Assistance outcomes where a claim for payment has been approved after placement of a job seeker in employment or study for 13 weeks. This has not been included in this report.

*Paid Final Outcomes:* Intensive Assistance outcomes where a claim for payment has been approved after placement of a job seeker in employment or study for 26 weeks. This has not been included in this report.

*Post Assistance Off-Income Support Outcomes:* refers to the proportion of Newstart or Youth Allowance (Other) recipients who were off Newstart or Youth Allowance (Other) or any other type allowance recorded on the Integrated Employment System three months after leaving assistance. Job seekers who move from Newstart or Youth

Allowance (Other) to income support payments not recorded on the Integrated Employment System, such as the Community Employment Development Projects (CDEP), age pension or any other pension where the job seekers is not registered with Centrelink as looking for work, are counted as off-benefit outcomes.

*Short Term Recipients:* are job seekers who have been registered with Centrelink as unemployed for less than 12 months and in receipt of income support.

*Unpaid exits:* Exits from Intensive Assistance that do not involve a paid outcome.

*Very Long Term Recipients:* are job seekers who have been registered with Centrelink as unemployed and in receipt of income support for 24 months or more unless otherwise stated.

*Work for the Dole commencement:* Job seekers are required to participate in WfD for up to six months over a 12-month period. This means that job seekers can participate in a number of different WfD projects and with different CWCs before completing their placement. Each time a job seeker starts with a CWC, a new commencement is recorded.

*Work for the Dole exit:* For the purposes of PPM, job seekers are surveyed whenever they have a break between CWC placements of more than 3 months and in relation to their last CWC placement in the 12 month period.

## Regional Coverage

Regions used in this report are based on the 19 tender regions for the second Job Network contract period.

## DEWR labour market regions

