

Labour Market Assistance Outcomes

Year ending December 2001

This report contains information about placements, commencements and post labour market assistance outcomes achieved for Job Network services and other programmes managed by the Department of Employment and Workplace Relations (DEWR).

Main features

Outcomes

The positive outcomes (employment and/or education/training) rate achieved in the year to end December 2001, three months after leaving assistance were:

- 48% for Intensive Assistance;
- 49% for Job Search Training;
- 71% for Job Matching;
- 82% for New Enterprise Incentive Scheme (NEIS);
- 32% for Work for the Dole;
- 54% for Indigenous Employment Programme Structured Training and Employment Projects (STEP);
- 74% for Indigenous Employment Programme Wage Assistance; and
- 49% for Return to Work.

Job Vacancies

In the year to end December 2001, over 747,000 vacancies were notified on the Australian Job Search database.

Job Placements

In the year to end December 2001, around 321,000 job seekers were placed into Job Matching vacancies. These include placements for those receiving other services, such as Intensive Assistance.

Commencements

In the year to end December 2001, commencements by job seekers in the various types of labour market assistance included:

- 280,000 in Intensive Assistance;
- 80,400 in Job Search Training;
- 6,200 in NEIS;
- 7,000 in the STEP and Wage Assistance elements of the Indigenous Employment Programme;
- 58,300 in Work for the Dole;
- 4,700 in Return to Work; and
- 17,600 in the Community Support Programme.

Income Support

In the year to end December 2001, the number of job seekers in receipt of Newstart or Youth Allowance (Other) increased by around 8,000 to over 675,900 job seekers. While the number of job seekers who were long term recipients (ie on allowances for 12 months or more) decreased by nearly 7,000, the number of short term recipients increased by over 15,000.

In this issue

Section 1: Labour Market Assistance Outcomes	Page 3
Section 2: Access to and Participation in Labour Market Assistance	Page 10
Section 3: Participation and Outcomes by Region	Page 15
Section 4: Impact on Income Support Recipients	Page 19
Special Article: Return to Work: Commencements, Outcomes and Job Seekers' Perception of Programme Participation	Page 20
Technical Notes	Page 29

Time periods used in this report

The Department's Post Programme Monitoring (PPM) Survey measures outcomes achieved by job seekers three months after they exit labour market assistance. This report contains outcomes data for job seekers who exited assistance in the 12 months to 30 September 2001 and their post assistance outcomes achieved by 31 December 2001.

Intensive Assistance post assistance outcomes should not be confused with *paid interim* or *paid final* outcomes. Post assistance outcomes are *all* employment and education outcomes while paid outcomes relate to a subset of employment and education outcomes where Job Network members receive payment for outcomes.

Commencement and placement data, derived from DEWR and Centrelink administrative systems, relate to job seekers who were placed in a job or commenced assistance between 1 January and 31 December 2000 and 1 January and 31 December 2001.

Special articles

From time to time special articles are included that examine topical issues related to labour market assistance. They are designed to examine issues not regularly addressed in this report. The special article for this issue is:

? Return to Work: Commencements, Outcomes and Job Seekers' Perception of Programme Participation.

More information.....

For further information, please contact Robert Lipp (02 6121 6046) or Michael Cameron (02 6121 7240) or e-mail Meherun.Nisa@dewr.gov.au.

© Commonwealth of Australia

This work is copyright. Apart from any use as permitted under the *Copyright Act 1968*, no part may be reproduced by any process without prior written permission from the Commonwealth available from Aus Info. Requests and inquiries concerning reproduction and rights should be addressed to the Manager, Legislative Services, AusInfo, GPO Box 1920, Canberra ACT 2601.

Department of Employment and Workplace Relations
<http://www.dewr.gov.au/>

Section 1: Labour Market Assistance Outcomes

Post assistance labour market outcomes

Table 1.1 shows labour market outcomes and further assistance levels of all job seekers three months after leaving the various types of employment assistance. Job seekers are categorised as employed, unemployed, not in the labour force or in further

assistance. Care should be taken when comparing outcomes for current services with labour market programmes operating before the introduction of Job Network, where outcome rates were affected by *excluding* those who proceeded to further labour market programme assistance. The Technical Notes at the end of this report discuss this issue further.

Table 1.1: Post assistance labour market outcomes year to end December 2001

Labour market assistance	Employed (%)	Unemployed (%)	Not in the Labour Force (%)	Further Assistance ¹ (%)	Exits (number)
Intensive Assistance ²	39.5	37.9	15.4	7.2	264,474
Funding level A ³	44.4	34.5	13.9	7.2	179,467
Funding level B ³	29.4	44.7	18.7	7.2	85,007
Job Search Training ²	40.3	47.0	5.3	7.3	78,117
Job Matching ⁴	65.9	27.8	6.3	na	239,000
Job Network Eligible (JNE) ⁵	61.1	33.6	5.3	na	132,705
Job Matching Only (JMO) ⁶	72.5	19.8	7.7	na	106,295
NEIS ²	80.5	10.9	7.0	1.7	6,505
SEDS ²	27.3	34.7	17.4	20.6	1,017
Work for the Dole ²	23.4	43.3	8.9	24.5	47,454
IEP - STEP ²	46.9	36.7	13.4	3.0	3,315
IEP - Wage Assistance ²	69.5	22.0	6.6	1.9	2,035
Return to Work ²	32.3	42.9	23.4	1.4	3,344

1. Further assistance includes commencements in DEWR funded labour market assistance and DEST programmes New Apprenticeships, Literacy and Numeracy and Advanced English for Migrants. Further assistance is not measured for Job Matching and job seekers who do not achieve an employment outcome are treated as either unemployed or not in the labour force.
 2. Post assistance outcomes are measured three months after the job seeker ceases assistance and relate to job seekers who ceased Intensive Assistance, Job Search Training, NEIS, Self Employment Development Scheme (SEDS), Work for the Dole, Return to Work Programme, Indigenous Employment Programme (IEP) Structured Training and Employment Projects (STEP) and IEP Wage Assistance between 1 October 2000 and 30 September 2001 and outcomes achieved by 31 December 2001. Positive and employment outcomes exclude indigenous job seekers who return to Community Development Employment Projects (CDEP) after leaving labour market assistance.
 3. The funding level refers to the level of disadvantage as defined by the Job Seeker Classification Instrument (JSCI) with B being the most disadvantaged.
 4. Post assistance outcomes for Job Matching relate to job seekers who were placed in a job between 1 October 2000 and 30 September 2001 and outcomes achieved by 31 December 2001. For job seekers who achieved a Job Matching placement within three months of leaving labour market assistance such as Job Search Training, Intensive Assistance and Work for the Dole, the outcome is excluded from Job Matching but included under the programme or service they participated in.
 5. Includes Job Network Eligible (JNE) job seekers who may be eligible for all Job Network services.
 6. Includes Job Matching Only (JMO) job seekers who are only eligible for Job Matching services.
- na - not applicable.

Source: The Post Programme Monitoring Survey conducted three months after job seekers cease assistance.

Post assistance employment and positive outcomes

Table 1.2 shows job seekers' shares of full-time and part-time employment, education/training and positive outcomes three months after leaving different types of labour market assistance.

Education and training outcomes include job seekers who are studying at a secondary school or college, TAFE, business college or university three months after ceasing labour market assistance.

Table 1.2: Post assistance employment and positive outcomes year to end December 2001

	Full-time Employed (%)	Part-time Employed (%)	Total Employed (%)	Education & Training (%)	Positive Outcomes ¹ (%)	Exits (number)
Labour market assistance						
Intensive Assistance ²	16.0	23.5	39.5	9.5	47.6	264,474
Funding level A ³	18.4	26.0	44.4	9.8	52.5	179,467
Funding level B ³	11.0	18.4	29.4	9.1	37.6	85,007
Job Search Training ²	20.2	20.2	40.4	12.8	48.5	78,117
Job Matching ⁴	38.1	27.8	65.9	11.8	70.5	239,000
Job Network Eligible (JNE) ⁵	35.9	25.1	61.1	10.0	65.8	132,705
Job Matching Only (JMO) ⁶	41.0	31.5	72.5	14.2	76.9	106,295
NEIS ²	48.1	32.4	80.5	7.4	82.3	6,505
SEDS ²	11.3	16.0	27.3	10.1	34.9	1,017
Work for the Dole ²	11.1	12.3	23.4	11.5	32.4	47,454
IEP - STEP ²	32.5	14.4	46.9	18.0	54.0	3,315
IEP - Wage Assistance ²	54.7	14.9	69.5	21.3	73.9	2,035
Return to Work ²	4.7	27.6	32.3	21.8	49.4	3,344

1. Positive outcomes include employed and education/training outcomes. Positive outcomes are less than the sum of employed and education/training outcomes because some job seekers achieve both an employment and an education outcome.

2. Post assistance outcomes are measured three months after participants leave assistance and relate to job seekers who ceased Intensive Assistance, Job Search Training, NEIS, Self Employment Development Scheme (SEDS), Work for the Dole, Return to Work Programme or Indigenous Employment Programme (IEP) Structured Training and Employment Projects (STEP) and IEP Wage Assistance between 1 October 2000 and 30 September 2001 and outcomes achieved by 31 December 2001. Positive and employment outcomes exclude indigenous job seekers who return to Community Development Employment Projects (CDEP) after leaving labour market assistance.

3. The funding level refers to the level of disadvantage as defined by the Job Seeker Classification Instrument (JSCI) with B being the most disadvantaged.

4. Post assistance outcomes for Job Matching relate to job seekers who were placed in a job between 1 October 2000 and 30 September 2001 and outcomes achieved by 31 December 2001. For job seekers who achieved a Job Matching placement within three months of leaving labour market assistance such as Job Search Training, Intensive Assistance and Work for the Dole, the outcome is excluded from Job Matching but included under the programme or service they participated in.

5. Includes Job Network Eligible (JNE) job seekers who may be eligible for all Job Network services.

6. Includes Job Matching Only (JMO) job seekers who are only eligible for Job Matching services.

Source: The Post Programme Monitoring Survey conducted three months after job seekers cease assistance.

Intensive Assistance

Table 1.3 shows post assistance outcomes for Intensive Assistance participants who exited between

1 October 2000 and 30 September 2001 and the outcomes they achieved three months later to 31 December 2001.

Table 1.3: Intensive Assistance: Post assistance outcomes year to end December 2001¹

Job seeker characteristics	Employment (%)	Education & Training (%)	Positive Outcomes ² (%)	Exits (number)
Funding level³				
A	44.4	9.8	52.5	179,467
B	29.4	9.1	37.6	85,007
Age group (years)				
15 to 20	36.7	15.6	50.3	30,475
21 to 24	38.8	12.8	49.4	30,420
25 to 34	41.2	10.2	49.7	65,841
35 to 49	42.0	9.5	50.0	89,760
50 or more	36.9	6.2	42.3	47,978
Duration on income support (months)				
0 to less than 6	46.5	9.6	54.8	83,192
6 to less than 12	41.1	10.9	50.3	29,403
12 to less than 24	40.1	11.5	49.7	37,120
24 to less than 36	38.0	10.3	46.7	36,167
36 or more	32.3	7.9	39.1	78,592
Educational attainment				
Less than Year 10	33.5	6.8	39.6	78,382
Year 10 or 11	41.1	8.0	47.8	107,072
Year 12	43.5	13.5	54.9	39,920
Post Secondary	42.9	14.0	54.7	39,100
Gender				
Male	38.2	7.7	44.9	184,902
Female	42.3	13.3	53.4	79,572
Equity groups⁴				
Disability	31.8	7.8	38.4	42,689
Indigenous	27.3	10.7	36.8	18,655
Non-English-speaking background	38.7	14.2	51.4	56,571
Sole parents	34.1	13.7	45.4	10,917
Total	39.5	9.5	47.6	264,474

1. Job seekers who exited Intensive Assistance between 1 October 2000 and 30 September 2001 and outcomes achieved by 31 December 2001. Since August 2001 a 25% sample of job seekers have been used to estimate outcomes for Intensive Assistance. Prior to that a census was conducted.
2. Positive outcomes include employed and education/training outcomes. Positive outcomes are less than the sum of employed and education/training outcomes because some job seekers achieve both an employment and an education outcome. Positive and employment outcomes exclude indigenous job seekers who return to Community Development Employment Projects (CDEP) after leaving labour market assistance.
3. The funding level refers to the level of disadvantage as defined by the Job Seeker Classification Instrument (JSCI), with funding level B being the most disadvantaged.
4. Equity groups are not mutually exclusive.

Source: The Post Programme Monitoring Survey conducted three months after job seekers cease assistance.

Job Search Training

Table 1.4 shows post assistance outcomes for Job Search Training participants who exited assistance

between 1 October 2000 and 30 September 2001 and the outcomes they achieved three months later, up to 31 December 2001.

Table 1.4: Job Search Training: Post assistance outcomes year to end December 2001¹

Job seeker characteristics	Employment (%)	Education & Training (%)	Positive Outcomes ² (%)	Exits (number)
Age group (years)				
15 to 20	40.4	19.8	53.6	12,383
21 to 24	46.4	17.3	57.1	14,698
25 to 34	41.7	11.9	49.2	24,178
35 to 49	38.7	10.1	45.2	21,074
50 or more	33.0	7.6	38.1	5,784
Duration on income support (months)				
0 to less than 6	41.7	12.9	49.9	51,298
6 to less than 12	38.5	11.9	46.2	15,230
12 to less than 24	37.2	12.5	45.2	6,498
24 to less than 36	37.0	17.4	48.0	3,464
36 or more	33.4	10.0	39.3	1,515
Educational attainment				
Less than Year 10	30.5	5.0	33.9	1,907
Year 10 or 11	37.5	8.6	43.3	27,019
Year 12	41.4	16.2	51.7	19,997
Post Secondary	42.7	14.5	51.7	29,194
Gender				
Male	37.4	11.0	44.9	54,028
Female	46.3	16.4	55.9	24,089
Equity groups³				
Disability	32.3	9.9	39.3	4,275
Indigenous	25.8	11.3	35.1	777
Non-English-speaking background	35.8	16.5	47.6	8,941
Sole Parents	33.8	14.4	42.5	1,180
Total	40.3	12.8	48.5	78,117

1. Job seekers who ceased Job Search Training between 1 October 2000 and 30 September 2001 and outcomes achieved by 31 December 2001.

2. Positive outcomes include employed and education/training outcomes. Positive outcomes are less than the sum of employed and education/training outcomes because some job seekers achieve both an employment and an education outcome. Positive and employment outcomes exclude indigenous job seekers who return to Community Development Employment Projects (CDEP) after leaving labour market assistance.

3. Equity groups are not mutually exclusive.

Source: The Post Programme Monitoring Survey conducted three months after job seekers cease assistance.

Job Matching

Table 1.5 shows the employment outcomes achieved by job seekers who were placed in an eligible job

between 1 October 2000 and 30 September 2001 and outcomes achieved three months later, up to 31 December 2001.

Table 1.5: Job Matching: Post assistance outcomes year to end December 2001¹

Job seeker characteristics	Employment (%)	Education & Training (%)	Positive Outcomes ² (%)	Placements (number)
Age group (years)				
15 to 20	64.9	20.6	73.3	55,022
21 to 24	64.7	13.4	69.9	38,812
25 to 34	65.9	10.5	69.6	66,073
35 to 49	67.2	8.8	70.5	61,744
50 or more	65.4	6.2	68.1	17,349
Duration on income support (months)³				
0 to less than 6	66.8	10.4	71.2	72,634
6 to less than 12	59.2	11.7	65.7	16,634
12 to less than 24	55.2	10.3	59.9	14,213
24 to less than 36	56.2	10.2	60.5	10,571
36 or more	48.3	7.0	52.8	18,653
Educational attainment³				
Less than Year 10	52.7	6.4	56.9	25,443
Year 10 or 11	60.5	8.4	64.6	54,718
Year 12	66.3	13.1	71.6	26,945
Post Secondary	64.4	13.2	70.1	25,292
Unknown	73.7	21.1	73.7	307
Gender				
Male	61.6	9.4	65.7	145,710
Female	71.6	15.1	76.8	93,290
Equity groups³				
Disability	52.7	9.3	58.4	14,311
Indigenous	49.6	8.0	54.8	5,533
Non-English-speaking background	58.2	12.1	64.5	14,822
Sole Parents	57.9	12.1	64.6	3,530
Job Network Eligible (JNE)⁴	61.1	10.0	65.8	132,705
Job Matching Only (JMO)⁵	72.5	14.2	76.9	106,295
Total	65.9	11.8	70.5	239,000

1. Job Matching outcomes are for job seekers placed in an eligible Job Matching job between 1 October 2000 and 30 September 2001 and outcomes achieved by 31 December 2001. For job seekers who achieved a Job Matching placement within three months of leaving labour market assistance such as apprenticeships and traineeships, Job Search Training, Intensive Assistance and Work for the Dole, the outcome is excluded from Job Matching but included under the programme or service they participated in. Job Matching outcomes are derived from a sample survey of job seekers placed in Job Matching vacancies. Since August 2001 a 25% sample of job seekers have been used to estimate outcomes for Job Matching. Prior to that a 10% sample was used.
2. Positive outcomes include employed and education/training outcomes. Positive outcomes are less than the sum of employed and education/training outcomes because some job seekers achieve both an employment and an education outcome. Positive and employment outcomes exclude indigenous job seekers who return to Community Development Employment Projects (CDEP) after leaving labour market assistance.
3. Outcomes refer to Job Network Eligible (JNE) job seekers only as educational attainment and equity group details are not recorded for Job Matching Only (JMO) and JMO job seekers are not on income support. Equity groups are not mutually exclusive.
4. Includes Job Network Eligible (JNE) job seekers who may be eligible for other Job Network services.
5. Includes Job Matching Only (JMO) job seekers who are only eligible for Job Matching services.

Source: The Post Programme Monitoring Survey conducted three months after job seekers cease assistance.

New Enterprise Incentive Scheme

Table 1.6 shows the post assistance outcomes achieved by those who left the New Enterprise Incentive Scheme (NEIS) in the 12 months up to end September 2001 and outcomes achieved three months later, up to 31 December 2001.

Traditionally NEIS has always experienced higher outcomes compared to other types of labour market assistance. This is due in part to the careful selection of viable businesses by NEIS providers prior to the commencement in assistance, as well as the characteristics of job seekers involved.

Table 1.6: New Enterprise Incentive Scheme: Post assistance outcomes year to end December 2001¹

Job seeker characteristics	Employment			Education & Training (%)	Positive Outcomes ³ (%)	Exits (number)
	Self Employed ² (%)	Employed (%)	Total Employed (%)			
Age Group (years)						
15 to 20	na	na	na	na	na	na
21 to 24	58.1	19.6	77.7	9.9	82.1	431
25 to 34	69.9	11.4	81.3	7.9	83.3	2,219
35 to 49	70.5	12.0	82.5	7.0	83.8	2,917
50 or more	64.5	9.8	74.3	6.9	76.1	856
Unemployment duration						
0 to less than 6	70.7	12.9	83.6	8.3	85.3	3,047
6 to less than 12	66.5	13.9	80.4	6.7	82.8	1,163
12 to less than 24	70.0	11.5	81.5	6.5	82.7	942
24 to less than 36	66.0	8.4	74.5	6.7	76.5	625
36 or more	63.4	8.4	71.8	6.5	73.4	728
Educational attainment						
Less than Year 10	68.1	7.6	75.6	3.3	77.5	514
Year 10 or 11	67.7	11.9	79.6	6.7	81.3	1,736
Year 12	69.0	11.7	80.7	8.8	82.2	1,205
Post Secondary	68.9	12.8	81.8	8.0	83.6	3,050
Gender						
Males	70.1	12.3	82.4	6.1	83.8	3,672
Females	66.7	11.6	78.3	8.9	80.5	2,833
Equity Groups⁴						
Disability	65.0	11.0	76.0	7.3	78.4	686
Indigenous	na	na	na	na	na	na
Non-English-speaking background	68.4	9.9	78.3	5.4	79.7	1,020
Sole Parents	59.7	14.2	73.9	14.4	80.4	263
Total	68.6	12.0	80.5	7.4	82.3	6,505

1. Job seekers who left NEIS placements between 1 October 2000 and 30 September 2001 and outcomes achieved by 31 December 2001.

2. Includes a small proportion of participants who are self employed but in a business not set up under NEIS.

3. Positive outcomes include employed and education/training outcomes. Positive outcomes are less than the sum of employed and education/training outcomes because some job seekers achieve both an employment and an education outcome. Positive and employment outcomes exclude indigenous job seekers who return to Community Development Employment Projects (CDEP) after leaving labour market assistance.

4. Equity groups are not mutually exclusive.

na Not available as the estimate is based on a small number of known outcomes.

Source: The Post Programme Monitoring Survey conducted three months after job seekers cease assistance.

Work for the Dole

The Work for the Dole (WfD) Programme aims to develop the work habits of participants through involving them in quality projects that are of value to the community. Employment outcomes are not part of the programme's immediate objectives but are included here as they demonstrate the success of work experience and increased job search activity. Outcomes relate to WfD participants referred to Community Workplace Coordinators (CWC).

Job seekers are now required to participate in WfD for up to six months over a twelve month period. This

means that job seekers can participate in a number of projects with different CWC's before completing their placement.

For the purposes of PPM, job seekers are surveyed whenever they have a break between CWC placements of more than 3 months and in relation to their last CWC placement in the twelve month period.

Job seekers aged 35 years or more who participate in Work for the Dole are volunteers.

Table 1.7: Work for the Dole: Post assistance outcomes year to end December 2001¹

Job seeker characteristics	Employment (%)	Education & Training (%)	Positive Outcomes ² (%)	Exits (number)
Age group (years)				
15 to 20	27.7	16.1	40.8	11,062
21 to 24	25.8	12.9	35.8	15,608
25 to 34	19.2	8.6	25.8	19,319
35 to 49	23.7	6.4	28.8	1,205
50 or more	20.4	5.1	24.1	260
Duration on income support (months)				
0 to less than 6	33.5	15.4	45.3	4,997
6 to less than 12	31.6	15.7	44.2	6,188
12 to less than 24	27.2	12.4	36.4	10,487
24 to less than 36	24.7	13.7	35.5	10,186
36 or more	14.2	6.8	19.7	15,596
Educational attainment				
Less than Year 10	13.2	5.7	18.1	8,919
Year 10 or 11	19.9	7.6	26.3	18,618
Year 12	28.8	16.3	41.2	12,315
Post Secondary	31.9	17.6	44.8	7,601
Gender				
Males	21.4	9.6	29.2	33,332
Females	27.1	15.3	38.4	14,122
Equity groups³				
Disability	16.3	9.3	24.3	5,835
Indigenous	9.5	9.1	17.8	1,966
Non-English-speaking background	22.5	17.6	37.4	4,187
Sole Parents	6.7	4.7	10.9	844
Total	23.4	11.5	32.4	47,454

1. Job seekers who left a Work for the Dole project between 1 October 2000 and 30 September 2001 and outcomes achieved by 31 December 2001.

2. Positive outcomes include employed and education/training outcomes. Positive outcomes are less than the sum of employed and education/training outcomes because some job seekers achieve both an employment and an education outcome. Positive and employment outcomes exclude indigenous job seekers who return to Community Development Employment Projects (CDEP) after leaving labour market assistance.

3. Equity groups are not mutually exclusive.

Source: The Post Programme Monitoring Survey conducted three months after job seekers cease assistance.

Section 2: Access to and Participation in Labour Market Assistance

Type of labour market assistance

Table 2.1 shows the commencements in Job Network services and other types of labour market assistance between the year to end December 2000 and the year to end December 2001. The table also shows the proportion of commencements by job seekers who had been receiving income support [Newstart and Youth Allowance (Other)] for 12 months or more (ie long term unemployed).

In the year to end December 2000, commencements

in Work for the Dole (WfD) are based on individual projects. In the year to end December 2001 commencements are based on new programme requirements including the introduction of Community Work Coordinators (CWCs) and job seekers being required to participate in WfD for up to six months over a twelve month period. This means that job seekers can participate in a number of different WfD projects and with different CWCs before completing their placement. A new commencement is recorded each time a job seeker starts with a CWC.

Table 2.1: Participation by type of labour market assistance in each of the past two years¹

	Year to end December 2000		Year to end December 2001	
	Commencements (number)	Proportion of long term recipients ² (%)	Commencements (number)	Proportion of long term recipients ² (%)
Labour market assistance				
Intensive Assistance	319,994	65.3	279,639	53.2
Job Search Training	62,773	17.0	80,418	14.3
Job Matching ³	297,375	27.2	320,746	24.7
Job Network Eligible (JNE)	202,908	35.8	196,467	36.1
Job Matching Only (JMO)	90,766	na	120,373	na
NEIS	6,358	na	6,220	33.6
Self Employment Development Scheme	1,408	57.9	1,393	61.0
Work for the Dole	49,521	74.6	58,282	73.7
IEP - STEP	3,194	35.1	4,909	na
IEP - Wage Assistance	2,107	41.4	2,146	na
Community Support Programme	13,373	66.7	17,582	66.6
Return to Work⁴	2,373	na	4,760	na

1. Commencement or placement of job seekers in labour market assistance funded by DEWR for the two years of 1 January to 31 December 2000 and 1 January to 31 December 2001.

2. The proportion of job seekers who have been registered as unemployed for twelve months or more and have been receiving income support including Newstart, Youth Allowance (Other) or other types of income support.

3. Job Matching total is greater than the sum of JNE and JMO as it includes commencements in apprenticeships and traineeships. Job Network Eligible (JNE) are job seekers who may be eligible for all Job Network services. Job Matching Only (JMO) are job seekers who are only eligible for Job Matching services.

4. Return to Work Programme commenced in February 2000 and many participants are not on income support.

na – not available.

Source: DEWR administrative systems. Community Support Programme commencements provided by Centrelink.

Access to Job Matching

Access to services and programmes by job seekers with different characteristics will depend on their eligibility and on their assessed capacity to benefit from the assistance provided. To ensure equity of access for job seekers with different characteristics, the proportion in assistance is compared to their proportion of the eligible population.

Job seekers with particular characteristics may be under-represented in some types of assistance but over-represented in others. Hence, it is important to look at all types of assistance in assessing equity of assistance. For example, while indigenous job seekers may be under-represented in some types of assistance, other more specific programmes are directed towards addressing their particular needs.

Table 2.2 shows, for a range of job seeker characteristics for Job Network Eligible job seekers, the proportion that were eligible for services on 31 December 2001 and the proportion that received a placement under Job Matching in the year to end December 2001. For example, 18% of those on all income support types were aged 15 to 20 years and these accounted for just over a quarter of all Job Matching placements during this time period.

Access is shown for all income support types and separately for those on the activity tested payments Newstart and Youth Allowance (Other). All income support types include some job seekers who are not subject to the activity test and volunteer to participate in Job Network services.

Table 2.2: Access to Job Matching by JNE job seeker characteristics year to end December 2001¹

Job seeker characteristics	All income support types		Newstart/Youth Allowance (Other)	
	Eligibility for Job Matching ² (%)	Placement in Job Matching ² (%)	Eligibility for Job Matching ³ (%)	Placement in Job Matching ³ (%)
Age group (years)				
15 to 20	18.0	25.6	12.8	19.3
21 to 24	14.2	16.9	15.5	18.0
25 to 34	24.8	26.5	26.6	28.5
35 to 49	28.1	23.8	29.6	25.7
50 or more	14.9	7.2	15.5	8.0
Total	100.0	100.0	100.0	100.0
Duration on income support (months)				
0 to less than 6	30.7	46.6	30.5	40.7
6 to less than 12	17.4	17.1	16.0	18.3
12 to less than 24	16.1	13.0	15.7	14.2
24 to less than 36	9.2	7.0	9.3	7.8
36 or more	26.6	16.3	28.6	19.0
Total	100.0	100.0	100.0	100.0
Educational attainment				
Less than Year 10	24.5	21.5	24.8	20.1
Year 10 or 11	37.4	40.9	37.0	41.9
Year 12	18.8	21.0	17.9	20.3
Post secondary	19.4	16.6	20.4	17.7
Total	100.0	100.0	100.0	100.0
Gender				
Male	66.9	66.7	69.6	69.1
Female	33.1	33.3	30.4	30.9
Total	100.0	100.0	100.0	100.0
Equity groups⁴				
Disability	19.6	9.6	19.6	10.3
Indigenous	6.1	4.2	6.0	4.3
Non-English-speaking background	14.5	10.1	15.1	10.9
Sole parents	2.3	1.5	na	na

1. Placements in Job Matching vacancies between 1 January and 31 December 2001.

2. Includes job seekers registered with Centrelink as unemployed and in receipt of the activity tested allowances Newstart and Youth Allowance (Other) or other types of income support payments not subject to activity test requirements at 31 December 2001.

3. Job seekers in receipt of Newstart and Youth Allowance (Other) at 31 December 2001.

4. Equity groups are not mutually exclusive.

na – not applicable

Source: DEWR administrative systems.

Access to Job Search Training

Table 2.3 shows, for a range of job seeker characteristics, the proportion of the population that were eligible for Job Search Training compared to the proportion commencing Job Search Training. This is shown for all income support categories and separately for those on the activity tested payments Newstart and Youth Allowance (Other).

All income support types include job seekers who are not subject to the activity test and volunteer to participate in Job Network services.

Only those job seekers assessed as eligible for Job Search Training under the Job Seeker Classification Instrument (JSCI) have been included in the eligible population.

For example, around 27% of those on all income support types were aged 15 to 20 years and these accounted for nearly 16% of all Job Search Training commencements in the year to end December 2001.

Table 2.3: Access to Job Search Training by job seeker characteristics year to end December 2001¹

Job seeker characteristics	All income support categories		Newstart/Youth Allowance (Other)	
	Eligibility for Job Search Training ² (%)	Commencement in Job Search Training ² (%)	Eligibility for Job Search Training ³ (%)	Commencement in Job Search Training ³ (%)
Age group (years)				
15 to 20	26.9	15.6	17.4	14.7
21 to 24	19.8	18.7	22.8	19.0
25 to 34	26.8	31.5	30.4	31.9
35 to 49	20.9	26.9	23.1	26.9
50 or more	5.7	7.4	6.4	7.5
Total	100.0	100.0	100.0	100.0
Duration on income support (months)				
0 to less than 6	53.7	62.9	55.5	62.9
6 to less than 12	24.0	22.8	22.2	22.8
12 to less than 24	14.8	9.2	14.5	9.2
24 to less than 36	4.3	3.4	4.3	3.4
36 or more	3.2	1.7	3.5	1.7
Total	100.0	100.0	100.0	100.0
Educational attainment				
Less than Year 10	8.6	1.7	8.6	1.7
Year 10 or 11	33.6	34.8	32.7	34.7
Year 12	27.5	26.5	25.5	26.2
Post secondary	30.3	37.1	33.2	37.4
Total	100.0	100.0	100.0	100.0
Gender				
Male	64.3	69.6	67.3	70.3
Female	35.7	30.4	32.7	29.7
Total	100.0	100.0	100.0	100.0
Equity groups⁴				
Disability	7.1	4.8	7.5	4.8
Indigenous	0.9	0.8	0.9	0.8
Non-English-speaking background	7.6	10.8	8.0	10.7
Sole parents	2.3	0.6	na	na

1. Commencement of job seekers in Job Search Training between 1 January and 31 December 2001.

2. Includes job seekers registered with Centrelink as unemployed and in receipt of the activity tested allowances Newstart and Youth Allowance (Other) or other types of income support payments not subject to activity test requirements at 31 December 2001.

3. Job seekers in receipt of Newstart and Youth Allowance (Other) at 31 December 2001.

4. Equity groups are not mutually exclusive.

na – not applicable

Source: DEWR administrative systems.

Access to Intensive Assistance

Table 2.4 shows, for a range of job seeker characteristics, the proportion of the population eligible for Intensive Assistance compared with the proportion commencing Intensive Assistance. This is shown for all income support categories and separately for those on the activity tested payments Newstart and Youth Allowance (Other).

Those on income support include job seekers who are not subject to the activity test and volunteer to participate in Job Network services.

As with Job Search Training, only those assessed as eligible for Intensive Assistance under the Job Seeker

Classification Instrument (JSCI) have been included in the eligible population.

For example, 13% of all income support types were aged 15 to 20 years and these accounted for around 13% of all Intensive Assistance commencements in the year to end December 2001.

Job seekers assessed as having higher levels of disadvantage may be under-represented in Intensive Assistance but are able to access the Community Support Programme and programmes administered by the Department of Family and Community Services for people with disabilities. This is reflected in the lower levels of access to Intensive Assistance of job seekers with a disability and those in receipt of income support for 3 years or more.

Table 2.4: Access to Intensive Assistance by job seeker characteristics year to end December 2001¹

Job seeker characteristics	All income support categories		Newstart/Youth Allowance (Other)	
	Eligibility for Intensive Assistance ² (%)	Commencement in Intensive Assistance ² (%)	Eligibility for Intensive Assistance ³ (%)	Commencement in Intensive Assistance ³ (%)
Age group (years)				
15 to 20	13.1	13.2	10.5	12.8
21 to 24	11.2	11.8	11.7	11.9
25 to 34	23.8	24.7	24.5	24.7
35 to 49	31.9	32.6	32.8	32.6
50 or more	20.0	17.8	20.5	18.1
Total	100.0	100.0	100.0	100.0
Duration on income support (months)				
0 to less than 6	15.3	34.9	14.6	33.5
6 to less than 12	12.9	11.9	12.2	12.0
12 to less than 24	16.8	13.6	16.4	13.8
24 to less than 36	12.6	10.0	12.5	10.2
36 or more	42.4	29.6	44.3	30.6
Total	100.0	100.0	100.0	100.0
Educational attainment				
Less than Year 10	33.9	29.5	33.9	29.6
Year 10 or 11	40.3	42.0	39.9	41.8
Year 12	13.6	15.4	13.7	15.4
Post secondary	12.1	13.2	12.5	13.3
Total	100.0	100.0	100.0	100.0
Gender				
Male	68.7	62.8	71.0	71.6
Female	31.3	37.2	29.0	28.4
Total	100	100.0	100.0	100.0
Equity groups⁴				
Disability	20.3	13.7	20.6	13.8
Indigenous	8.8	7.6	8.3	7.5
Non-English-speaking background	18.8	19.9	19.1	19.9
Sole parents	2.4	1.5	na	na

1. Commencement of job seekers in Intensive Assistance between 1 January and 31 December 2001.

2. Includes job seekers registered with Centrelink as unemployed and in receipt of the activity tested allowances Newstart and Youth Allowance (Other) or other types of income support payments not subject to activity test requirements at 31 December 2001.

3. Job seekers in receipt of Newstart and Youth Allowance (Other) at 31 December 2001.

4. Equity groups are not mutually exclusive.

na – not applicable

Source: DEWR administrative systems.

Participation in Work for the Dole

Table 2.5 shows, for a range of job seeker characteristics, the proportion in the eligible population and the proportion commencing Work for the Dole. This is shown only for those on the activity tested payments Newstart and Youth Allowance (Other).

Job seekers aged 35 years or more on Newstart Allowance may volunteer to participate in Work for

the Dole.

Job seekers are required to participate in WfD for up to six months over a twelve month period. This means that job seekers can participate in a number of different WfD projects and with different CWCs before completing their placement. Each time a job seeker starts with a CWC, a new commencement is recorded.

Table 2.5: Access to Work for the Dole by job seeker characteristics year to end December 2001¹

Job seeker characteristics	Eligibility for Work for Dole ² (%)	Commencement in Work for the Dole (%)
Age group (years)		
15 to 20	15.0	23.6
21 to 24	16.1	34.6
25 to 34	25.7	37.7
35 to 49	28.1	3.0
50 or more	15.0	1.1
Total	100.0	100.0
Duration on income support (months)		
0 to less than 6	31.8	10.5
6 to less than 12	17.2	15.7
12 to less than 24	17.1	25.4
24 to less than 36	8.4	14.8
36 or more	25.5	33.5
Total	100.0	100.0
Educational attainment		
Less than Year 10	23.3	17.8
Year 10 or 11	35.9	39.0
Year 12	19.3	28.1
Post secondary	21.5	15.2
Total	100.0	100.0
Gender		
Male	67.8	71.8
Female	32.2	28.2
Total	100.0	100.0
Equity groups³		
Disability	19.4	11.0
Indigenous	6.1	3.5
Non-English-speaking background	15.1	7.6
Sole parents	na	na

1. Commencement of job seekers in Work for the Dole between 1 January and 31 December 2001.

2. Job seekers receiving Newstart and Youth Allowance (Other) as at 31 December 2001.

3. Equity groups are not mutually exclusive.

na – not applicable.

Source: DEWR administrative systems.

Section 3: Participation and Outcomes by Region

Participation in labour market assistance by region

This section presents data on participation by job seekers in labour market assistance for the DEWR Labour Market Regions used during the second contract period for Job Network. A map of DEWR regions is included in the Technical Notes of this report.

Reporting at a regional level is restricted to the main types of Job Network assistance and Work for the Dole.

Table 3.1 provides details of placements in Job Matching jobs and commencements in Job Search Training, Intensive Assistance and Work for the Dole.

The number of placements and commencements in the various types of labour market assistance will depend on the size of the region, labour market conditions and the relative disadvantage of job seekers in the region.

Table 3.1: Commencements in labour market assistance by region year to end December 2001¹

DEWR Region	Job Matching (JNE) ² (Number)	Job Search Training (Number)	Intensive Assistance (Number)	Work for the Dole (Number)
Sydney	23,779	15,733	43,792	6,799
Hunter and North Coast	10,937	4,869	24,676	4,055
Illawarra and SE NSW	5,138	2,450	7,847	1,876
Western NSW	9,382	1,974	7,981	1,721
Riverina	3,320	866	3,123	646
New South Wales	52,556	25,892	87,419	15,097
Melbourne	28,089	13,364	42,074	9,707
Eastern Victoria	7,654	1,954	8,474	1,426
Western Victoria	11,015	3,115	14,714	1,923
Victoria	46,758	18,433	65,262	13,056
Brisbane	29,632	12,693	35,007	11,457
Southern Queensland	9,450	2,090	10,259	1,821
Central and Northern QLD	14,218	4,021	14,020	3,125
Queensland	53,300	18,804	59,286	16,403
Perth	10,557	6,075	17,330	4,382
South Western Australia	2,843	791	3,481	950
Greater Western Australia	2,144	531	3,190	429
Western Australia	15,544	7,397	24,001	5,761
Adelaide	12,050	4,727	19,277	4,108
South Australia Country	7,102	1,258	7,605	1,120
South Australia	19,152	5,985	26,882	5,228
Tasmania	5,456	2,000	11,647	1,661
Northern Territory	2,182	623	2,525	377
Australian Capital Territory	1,519	1,284	2,617	699
Australia	196,467	80,418	279,639	58,282

1. Commencement or placement in labour market assistance between 1 January and 31 December 2001.

2. Job Matching for JNE job seeker placements are included while JMO job seeker placements have been excluded.

Source: DEWR administrative systems.

Job Matching placements by region

Table 3.2 shows the number of vacancies notified on the Australian Job Search (AJS) database for the month of December 2001 by DEWR region, State and Territory and nationally.

In addition to the 36,693 new vacancies lodged on the AJS, some vacancies lodged in the preceding month remained active during December.

In total, Job Network members listed 747,264 job vacancies on the Australian Job Search database in the year to end December 2001.

Also shown are Job Matching placements for both Job Network eligible (JNE) and Job Matching only (JMO) job seekers in each region in the year to end December 2001. JMOs accounted for over one-third of all Job Matching placements.

Table 3.2: Job Matching placements by region year to end December 2001

DEWR Region	Vacancies notified on AJS in December 2001 ¹ (Number)	Job Matching ² (number)			Share of placements filled by JMO clients (%)
		JNE ³	JMO ⁴	Total ⁵	
Sydney	5,301	23,779	15,109	39,152	38.6
Hunter and North Coast	2,009	10,937	4,443	15,669	28.4
Illawarra and SE NSW	986	5,138	3,043	8,295	36.7
Western NSW	1,447	9,382	8,478	18,114	46.8
Riverina	565	3,320	3,117	6,558	47.5
New South Wales	10,308	52,556	34,190	87,788	38.9
Melbourne	5,344	28,089	15,117	43,936	34.4
Eastern Victoria	1,259	7,654	6,062	13,831	43.8
Western Victoria	1,876	11,015	7,056	18,369	38.4
Victoria	8,479	46,758	28,235	76,136	37.1
Brisbane	5,283	29,632	16,706	46,751	35.7
Southern Queensland	1,846	9,450	6,187	15,779	39.2
Central and Northern QLD	2,951	14,218	10,827	25,167	43.0
Queensland	10,080	53,300	33,720	87,697	38.5
Perth	2,177	10,557	5,253	15,923	33.0
South Western Australia	540	2,843	2,356	5,231	45.0
Greater Western Australia	574	2,144	2,976	5,133	58.0
Western Australia	3,291	15,544	10,585	26,287	40.3
Adelaide	1,812	12,050	4,461	16,992	26.3
South Australia Country	1,004	7,102	4,255	11,513	37.0
South Australia	2,816	19,152	8,716	28,505	30.6
Tasmania	942	5,456	2,289	7,927	28.9
Northern Territory	446	2,182	1,863	4,061	45.9
Australian Capital Territory	331	1,519	775	2,345	33.0
Australia	36,693	196,467	120,373	320,746	37.5

1. Vacancies notified on the Australian Job Search database for the month of December 2001.

2. Placements in eligible Job Matching vacancies between 1 January and 31 December 2001.

3. Job Network Eligible (JNE) job seekers who may be eligible for all Job Network services.

4. Job Matching Only (JMO) are job seekers who are eligible only for Job Matching services.

5. Total is greater than the sum of JNE and JMO placements as this figure includes apprenticeships and traineeships.

Source: DEWR administrative systems.

Labour market assistance by region

Table 3.3 shows the proportion of Newstart and Youth Allowance (Other) recipients as at December 2001 compared to the proportion of Job Matching job placements for Job Network eligible job seekers and

commencements in Job Search Training, Intensive Assistance and Work for the Dole. This is provided on a DEWR regional and State and Territory basis.

Table 3.3: Comparison of labour market assistance by region year to end December 2001¹

DEWR Region	Newstart/ Youth Allowance (Other) recipients ² (%)	Job Matching (JNE) ³ (%)	Job Search Training (%)	Intensive Assistance (%)	Work for the Dole (%)
Sydney	14.6	12.1	19.6	15.7	11.7
Hunter and North Coast	8.0	5.6	6.1	8.8	7.0
Illawarra and SE NSW	3.1	2.6	3.0	2.8	3.2
Western NSW	3.0	4.8	2.5	2.9	3.0
Riverina	1.1	1.7	1.1	1.1	1.1
New South Wales	29.9	26.8	32.2	31.3	25.9
Melbourne	15.7	14.3	16.6	15.0	16.7
Eastern Victoria	2.4	3.9	2.4	3.0	2.4
Western Victoria	4.1	5.6	3.9	5.3	3.3
Victoria	22.3	23.8	22.9	23.3	22.4
Brisbane	14.1	15.1	15.8	12.5	19.7
Southern Queensland	3.1	4.8	2.6	3.7	3.1
Central and Northern QLD	5.2	7.2	5.0	5.0	5.4
Queensland	22.4	27.1	23.4	21.2	28.1
Perth	7.3	5.4	7.6	6.2	7.5
South Western Australia	1.5	1.4	1.0	1.2	1.6
Greater Western Australia	1.4	1.1	0.7	1.1	0.7
Western Australia	10.1	7.9	9.2	8.6	9.9
Adelaide	6.4	6.1	5.9	6.9	7.0
South Australia Country	2.4	3.6	1.6	2.7	1.9
South Australia	8.8	9.7	7.4	9.6	9.0
Tasmania	3.7	2.8	2.5	4.2	2.8
Northern Territory	2.0	1.1	0.8	0.9	0.6
Australian Capital Territory	0.9	0.8	1.6	0.9	1.2
Australia	100.0	100.0	100.0	100.0	100.0

1. Commencement or placement of job seekers in labour market assistance between 1 January and 31 December 2001.

2. Job Seekers receiving Newstart or Youth Allowance (Other) as at 31 December 2001.

3. Includes Job Network Eligible (JNE) job seekers who may be eligible for all Job Network services and excludes Job Matching Only (JMO) job seekers who are only eligible for Job Matching services.

Source: DEWR administrative systems.

Employment outcomes by region

Table 3.4 shows unsubsidised employment outcomes for job seekers who ceased assistance between 1 October 2000 and 30 September 2001 and achieved by 31 December 2001. Employment outcomes are for Job Matching, Job Search Training, Intensive Assistance and Work for the Dole.

Job Matching includes Job Network Eligible and Job Matching Only job seekers. Outcomes are presented on a DEWR regional, State and Territory and national basis.

Table 3.4: Regional labour market post assistance employment outcomes year to end December 2001¹

DEWR Region	Job Matching ² (%)	Job Search Training ³ (%)	Intensive Assistance ³ (%)	Work for the Dole ³ (%)
Sydney	65.5	38.8	36.9	21.8
Hunter and North Coast	64.8	36.7	36.6	16.5
Illawarra and SE NSW	69.3	44.7	36.6	18.9
Western NSW	67.4	37.5	33.0	21.5
Riverina	64.3	43.5	34.8	20.9
New South Wales	66.0	39.1	36.5	19.8
Melbourne	64.9	38.8	41.5	27.6
Eastern Victoria	64.0	41.0	41.7	26.2
Western Victoria	68.9	45.7	44.3	19.5
Victoria	65.7	40.3	42.2	26.0
Brisbane	67.7	39.6	41.4	26.8
Southern Queensland	69.5	44.5	37.9	23.2
Central and Northern QLD	66.9	45.9	38.6	22.8
Queensland	67.8	41.5	40.2	25.6
Perth	66.3	38.8	40.2	22.5
South Western Australia	64.1	38.0	40.1	25.3
Greater Western Australia	61.4	40.0	27.9	23.7
Western Australia	65.2	38.8	38.6	23.1
Adelaide	63.6	42.7	41.1	22.4
South Australia Country	61.0	40.6	43.0	22.3
South Australia	62.5	42.2	41.7	22.4
Tasmania	61.2	39.8	41.2	15.9
Northern Territory	60.0	40.6	27.7	16.3
Australian Capital Territory	78.7	50.7	39.2	28.1
Australia	65.9	40.3	39.5	23.4

1. Employment outcomes exclude indigenous job seekers who return to a Community Development Employment Projects (CDEP) after leaving labour market assistance.
2. Job Matching outcomes are for job seekers placed in an eligible Job Matching job between 1 October 2000 and 30 September 2001 and outcomes achieved by 31 December 2001. For job seekers who achieved a Job Matching placement within three months of leaving labour market assistance such as Job Search Training, Intensive Assistance and Work for the Dole, the outcome is excluded from Job Matching but included under the programme or service they participated in. Outcomes for apprenticeships and traineeships are excluded.
3. Post assistance employment outcomes relate to job seekers who ceased Intensive Assistance, Job Search Training or Work for the Dole between 1 October 2000 and 30 September 2001 and outcomes achieved by 31 December 2001.

Source: The Post Programme Monitoring Survey conducted three months after job seekers cease assistance.

Section 4: Impact on Income Support Recipients

Number of income support recipients

An important goal of employment assistance is to reduce or remove employment barriers experienced by job seekers so they can compete effectively for jobs. Higher levels of employment assistance are provided to the most disadvantaged job seekers.

While this report focuses mainly on the outcomes achieved by individual forms of assistance, it is also important to note that other factors, such as administrative changes and economic conditions, also have a significant impact on the number of income support recipients.

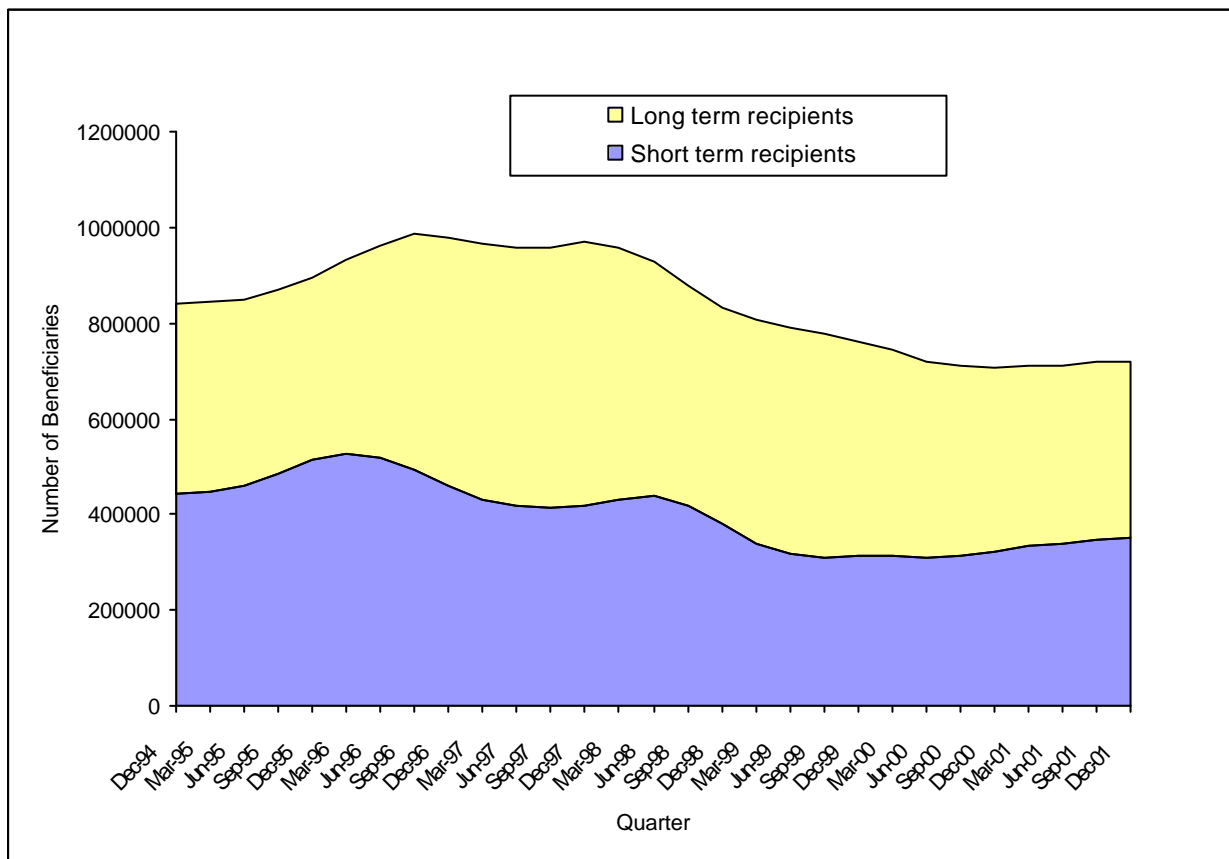
Figure 4.1 shows the changes over time in the number of short and long term income support recipients. Many long term recipients (in receipt of Newstart and Youth Allowance (Other) for 12 months or more) will have had a job at some time

over the last 12 months. These job seekers are reclassified as short term recipients only if they remain totally off benefits for a continuous period of more than 13 weeks.

Hence, long term recipients should not be confused with the long term unemployed as defined by the Australian Bureau of Statistics. The long term unemployed are people currently looking for work who have not had a job that lasted for 2 weeks or more in the last year.

Data from the Department of Family and Community Services show that in the 12 months to the end of December 2001, the number of people in receipt of Newstart or Youth Allowance (Other) increased by around 8,000 to over 675,900 job seekers. While the number of job seekers who were long term recipients decreased by nearly 7,000 the number of short term recipients increased by over 15,000.

Figure 4.1: Number of Income Support Recipients¹



Source: Trend series based on data from DEWR administrative system.

- Figures quoted in the text are from the Department of Family and Community Services: "Labour Market and Related Payments a monthly profile, December 2001".

Labour Market Assistance Outcomes: Special Article

Article 1
December 2001

**Return to Work:
Commencements, Outcomes and
Job Seekers' Perception of
Programme Participation**



Table of Contents

1. Outline of the Return to Work programme 21

2. Demographic Characteristics of the Participants 21

3. Post Assistance Outcomes by Job Seeker Characteristics 22

4. Post Assistance Outcomes by States 25

5. Job Seekers' Perception of Programme Participation 26

Appendix: A 28

Response Rate by States 28

1. Outline of the Return to Work programme

The Return to Work programme was announced in the 1999-2000 budget and is designed to improve job opportunities for job seekers, especially for women, returning to the workforce. It is a voluntary programme and available to job seekers not currently receiving other employment assistance, regardless of their income support status. Job seekers who are on income support must be registered with Centrelink as unemployed. The objectives of the programme are to increase the skills and improve the self-esteem, motivation, confidence and career planning of job seekers who wish to re-enter the labour force after an absence of two or more years due to their roles as carers of children or of the aged, disabled or chronically ill.

The programme is separate from Job Network as it is preparatory in nature rather than focused on employment outcomes. The Return to Work services are delivered to job seekers for the Department by contracted Managing Agents in each State and Territory. Centrelink provides information about the Managing Agents and the programme to the job seekers. The participants then approach the Managing Agents for their placement in the programme. An individual Return to Work plan is developed during the introductory interview, where services such as referral to other career counselling or training are provided. An exit interview takes place when the training is completed.

In July 2002, the Return to Work programme will be replaced by the *Transition to Work* services under the *Australians Working Together* initiative. This service will provide flexible and individually tailored assistance, to parents, carers and mature age job seekers, including assessment, training and advice to help them return to the labour market.

2. Demographic Characteristics of the participants

Table 2.1 shows that from February 2000 to December 2001 over 7,000 job seekers participated in the Return to Work programme. The participants are predominantly women (97%) and between 35 to 49 years of age (69%). Data collected through the Post Programme Monitoring (PPM) survey shows (see table 3.1) that around 93 percent of the participants are caring for their own children and their average household income per week is over \$500 dollars. Around 63 percent of the participants are not on income support and the majority of those on income support were registered as unemployed for less than a month.

Over 70% of the participants are from New South Wales, Victoria and Queensland (Table 2.2). Fifteen percent come from Western Australia and around 10% from South Australian. Proportions of participants are relatively small from Tasmania, the Australian Capital Territory and the Northern Territory.

Table 2.1: Commencements by demographic characteristics: February 2000 to December 2001

<i>Job seeker Characteristics</i>	<i>Commencements</i>	
	Number	Percent
Age		
Up to 24 years	155	2.2
25-34 years	1,613	22.4
35-49 years	4,940	68.5
50 years or more	499	6.9
Gender		
Male	224	3.1
Female	6,983	96.9
Equity groups¹		
Disability	169	na
Indigenous	42	na
Non English Speaking Background	496	na
Sole Parents	150	na
Total	7,207	100.0

1 Equity groups are not mutually exclusive and are only available for those on income support and registered as unemployed with Centrelink.

Source: DEWR administrative systems.

Table 2.2: Commencements by State: February 2000 to December 2001

<i>States</i>	<i>Commencements</i>	
	Number	Percent
New South Wales	2,119	27.9
Victoria	1,580	22.3
Queensland	1,396	20.1
South Australia	682	9.3
Western Australia	1,084	15.4
Tasmania	93	1.4
Australian Capital Territory	126	2.0
Northern Territory	127	1.6
Australia	7,207	100.0

Source: DEWR administrative systems

3. Post Assistance Outcomes by Job Seeker Characteristics

The Department undertakes the PPM survey to assess the employment and education status of the Return to Work programme participants. The PPM Survey measures outcomes achieved by job seekers three months after they exit labour market assistance. This report contains outcomes data for Return to Work participants who exited from February 2000 to the end of September 2001 and their post assistance outcomes achieved up to December 2001.

Table 3.1 shows labour market outcomes and further assistance levels for the Return to Work programme participants. Job seekers are categorised as employed, unemployed, not in the labour force or in further assistance.

Employment outcomes achieved by job seekers aged between 25 to 49 years are over 33%, and job seekers 50 years plus are around 25%. While age of children does not appear to have a large impact on job seekers' employment outcomes, job seekers with children aged 6 years and over are more likely to be unemployed and looking for work than job seekers with younger children who tend to be not in the labour force.

Table 3.2 shows job seekers' shares of full-time and part-time employment, education/training and positive outcomes three months after leaving the Return to Work programme. Education and training outcomes include job seekers who are studying at a secondary school or college, TAFE, business college or university three months after ceasing labour market assistance.

Casual part time employment has become a more prevalent form of employment over the last decade (DEWRSB 2000:140)¹. Those in Return to Work find considerably more part time than full time work. This is likely to reflect the target population of the programme, that is those returning to the work force with children. Table 3.2 shows that at the National level, 32% achieved employment outcomes of which 28% were part time. Over 20% proceeded to education and training, which is considerably higher than programmes such as Intensive Assistance and Job Search Training.

¹ DEWRSB 2000. *Job Network Evaluation: Stage one implementation and market development*. Evaluation and Program Performance Branch, February 2000, EPPB Report 1/2000.

Table 3.1: Post Assistance Labour Market Outcomes achieved by December 2001¹

Job seeker characteristics	Employed ² (%)	Unemployed (%)	Not in the Labour Force (%)	Further ³ Assistance (%)	Exits ⁴ (n)
Age					
Up to 24 years	na	na	na	na	na
25-34 years	33.2	41.4	24.3	1.0	993
35-49 years	33.4	43.7	21.5	1.5	3,151
50 years or more	24.7	44.4	28.5	2.5	332
Educational Attainment⁵					
Less than Year 10	32.9	36.5	21.9	8.6	507
Year 10 or 11	32.5	47.9	16.7	2.9	1910
Year 12	30.6	47.4	18.4	3.6	840
Post Secondary	36.3	44.7	16.3	2.7	1304
Gender					
Male	22.1	51.5	22.1	4.4	141
Female	32.9	43.2	22.5	1.4	4,419
Income⁵					
Less than \$500 per week	34.4	42.0	22.2	na	1992
More than \$500 per week	33.5	44.6	20.5	na	2568
Marital Status⁵					
Married	32.8	44.7	21.1	na	4126
Other	30.4	40.8	27.4	na	434
Age of children⁵					
Up to 5 years of age	32.2	39.5	26.8	na	2175
Age 6 years or more	32.5	47.6	18.4	na	2385
Who they cared for⁵					
Children	32.9	44.5	21.2	na	4357
Others	34.3	34.3	30.0	na	203
Equity groups⁶					
Disability	21.1	40.9	33.4	4.7	134
Indigenous	na	na	na	na	na
Non English Speak. Background	30.5	51.3	15.0	3.1	324
Sole Parents	34.0	38.5	23.8	3.8	162
Australia	32.6	43.5	22.5	1.4	4,560

1 Job seekers who left the Return to Work programme by September 2001 and achieved outcomes by December 2001.

2 In full or part-time employment 3 months after leaving assistance

3 Further assistance includes commencements in DEWR funded labour market assistance and DEST programmes New Apprenticeships, Literacy and Numeracy and Advanced English for Migrants.

4 Exits include those in further labour market assistance.

5 Income, marital status, age of children and who they cared for are collected in the PPM survey and so relate to exits from the programme who did not enter Further Assistance. As a result the level of Further Assistance for these variables are not known. For the purposes of calculating outcomes the overall level of 1.4 % is assumed to apply.

6 Equity groups are not mutually exclusive and are only available for those on income support and registered as unemployed with Centrelink.

na Not available.

Source: The Post Programme Monitoring (PPM) Survey conducted 3 months after job seekers cease assistance.

Table 3.2: Post Assistance Employment and Positive Outcomes achieved by December 2001¹

Job seeker Characteristics	Employed			Education & Training (%)	Positive Outcomes ⁵ (%)	Exits (n)
	Full-time ² (%)	Part-time ³ (%)	Total ⁴ (%)			
Age						
Up to 24 years	na	na	na	na	na	na
25-34 years	5.3	27.9	33.2	22.2	51.2	993
35-49 years	4.6	28.8	33.4	21.2	50.0	3,151
50 years or more	4.0	20.7	24.7	18.0	39.3	332
Educational Attainment⁶						
Less than Year 10	8.2	24.7	32.9	16.4	43.8	507
Year 10 or 11	4.3	28.2	32.5	24.4	51.5	1910
Year 12	9.1	21.5	30.6	19.9	44.9	840
Post Secondary	7.0	29.3	36.3	24.5	55.3	1304
Gender						
Male	6.9	15.2	22.1	19.6	39.2	141
Female	4.7	28.2	32.9	21.1	49.5	4,419
Income⁶						
Less than \$500 per week	4.1	30.3	34.4	22.9	52.5	1992
More than \$500 per week	5.4	28.1	33.5	21.0	50.0	2568
Marital Status⁶						
Married	4.2	28.5	32.8	20.9	49.5	4126
Other	7.6	22.8	30.4	23.7	48.7	434
Age of children⁶						
Up to 5 years of age	4.7	27.5	32.2	23.0	50.2	2175
Age 6 years or more	4.6	27.8	32.5	19.1	47.9	2385
Who they cared for⁶						
Children	4.6	28.2	32.9	21.3	49.8	4357
Others	8.9	25.5	34.3	20.2	47.5	203
Equity groups⁷						
Disability	7.9	13.2	21.1	13.6	31.0	134
Indigenous	0.0	16.1	16.1	16.1	32.2	na
Non English Speak. Background	8.8	21.7	30.5	20.8	47.9	324
Sole Parents	12.1	21.8	34.0	28.3	55.5	162
Australia	4.7	27.9	32.6	21.1	49.2	4,560

1 Job seekers who left a Return to Work placement by September 2001 and achieved outcomes by December 2001.

2 In employment of 35 hours or more per week, 3 months after leaving assistance.

3 In employment of less than 35 hours per week, 3 months after leaving assistance.

4 In full or part-time employment 3 months after leaving assistance.

5 Positive outcomes include employed and education/training outcomes. Positive outcomes are less than the sum of employed and education/training outcomes because some job seekers achieve both an employment and an education outcome.

6 Educational attainment, income, marital status, age of children and who they cared for are collected in the PPM survey and so relate to exits from the programme.

7 Equity groups are not mutually exclusive and are only available for those on income support and registered as unemployed with Centrelink

na Not available as the estimate is based on a small number of known outcomes.

Source: The Post Programme Monitoring (PPM) Survey conducted 3 months after job seekers cease assistance.

4. Post Assistance Outcomes by States

This section presents outcomes data on a State and national basis. Table 4.1 shows that the highest employment and education outcomes are achieved in South Australia.

Table 4.1: State Level Post Assistance Labour Market Outcomes achieved by December 2001¹

States	Employed ² (%)	Unemployed (%)	Not in the Labour Force (%)	Further Assistance ³ (%)	Exits ⁴ (n)
New South Wales	33.5	46.9	17.3	2.3	1,078
Victoria	34.4	43.9	20.5	1.1	1,058
Queensland	27.0	45.9	27.0	0.0	932
Western Australia	33.1	36.7	28.8	1.4	824
South Australia	38.4	39.4	20.2	2.0	405
Australian Capital Territory	26.1	40.1	30.1	3.7	107
Australia⁵	32.6	43.5	22.5	1.4	4,560

Table 4.2: State Level Post Assistance Employment and Positive Outcomes achieved by December 2001¹

States	Employed			Education & Training (%)	Positive Outcomes ⁸ (%)	Exits ⁴ (n)
	Full-time ⁶ (%)	Part-time ⁷ (%)	Total ² (%)			
New South Wales	4.9	28.6	33.5	21.3	49.8	1,078
Victoria	4.9	29.6	34.4	14.7	46.2	1,058
Queensland	2.8	24.2	27.0	21.2	44.5	932
Western Australia	4.5	28.6	33.1	24.3	52.9	824
South Australia	6.9	31.4	38.4	29.5	60.7	405
Australian Capital Territory	10.9	15.2	26.1	12.0	36.1	107
Australia⁵	4.7	27.9	32.6	21.1	49.2	4,560

- 1 Job seekers who left a Return to Work placement by September 2001 and outcomes achieved by December 2001.
- 2 In full or part-time employment 3 months after leaving assistance. Due to rounding, full and part time may not equal total employment.
- 3 Further assistance includes commencements in DEWR funded labour market assistance and DEST programmes New Apprenticeships, Literacy and Numeracy and Advanced English for Migrants.
- 4 Exits include those in further labour market assistance.
- 5 The national total includes Tasmania and Northern Territory. Estimates for Tasmania and Northern Territory are not listed individually as they are based on a small number of known outcomes which are subject to high levels of sampling error.
- 6 In employment of 35 hours or more per week, 3 months after leaving assistance.
- 7 In employment of less than 35 hours per week, 3 months after leaving assistance.
- 8 Positive outcomes include employed and education/training outcomes. Positive outcomes are less than the sum of employed and education/training outcomes because some job seekers achieve both an employment and an education outcome.

Source: The Post Programme Monitoring (PPM) Survey conducted 3 months after job seekers cease assistance.

5. Job Seekers' Perception of Programme Participation

Table 5.1 shows job seekers' perceptions of their participation in the Return to Work programme. Overall perception of participation in the programme was very positive. In New South Wales, Victoria and Western Australia, around 96% of the participants believed that their *work skills* improved. The participants in all States believed that the *chances of getting a job, desire to find a job, work skills* and *self confidence* improved due to their participation in the programme.

Table 5.1: Job seekers perception of the effect of participation in Return to Work¹

	Improved it a lot (%)	Improved it somewhat (%)	Improved (%)	Reduced it somewhat (%)	Reduced it a lot (%)	Reduced (%)
<i>A job seeker's chances of getting a job</i>						
New South Wales	28.3	67.1	95.4	2.5	2.0	4.5
Victoria	31.3	65.6	96.9	1.6	1.6	3.2
Queensland	10.4	80.0	90.4	7.0	2.6	9.6
South Australia	26.3	66.5	92.8	6.0	1.2	7.2
Western Australia	26.5	69.0	95.5	3.6	0.9	4.5
Australia ²	25.1	69.6	94.7	3.6	1.7	5.3
<i>A job seeker's desire to find a job</i>						
New South Wales	43.2	50.4	93.6	4.0	2.5	6.5
Victoria	44.4	49.3	93.7	4.9	1.4	6.3
Queensland	30.0	58.9	88.9	8.4	2.6	11.0
South Australia	46.2	45.7	91.9	5.2	2.9	8.1
Western Australia	41.6	52.0	93.6	5.5	0.9	6.4
Australia ²	40.8	51.9	92.7	5.5	1.8	7.3
<i>A job seeker's work skills</i>						
New South Wales	31.3	64.5	95.8	2.0	2.2	4.2
Victoria	31.9	64.5	96.4	2.6	1.0	3.6
Queensland	14.1	77.5	91.6	6.3	2.1	8.4
South Australia	28.7	65.6	94.3	4.4	1.2	5.6
Western Australia	28.1	69.2	97.3	2.1	0.6	2.7
Australia ²	27.4	68.0	95.4	3.2	1.4	4.6
<i>A job seeker's self confidence</i>						
New South Wales	43.3	51.3	94.6	2.2	3.2	5.4
Victoria	43.9	49.2	93.1	5.2	1.7	6.9
Queensland	28.2	57.2	85.4	11.0	3.7	14.7
South Australia	45.6	46.2	91.8	5.5	2.7	8.2
Western Australia	43.4	50.0	93.4	4.9	1.7	6.6
Australia ²	40.6	51.4	92.0	5.6	2.4	8.0

1 Job seekers who left a Return to Work placement by June 2001.

2 The national total includes Tasmania, Northern Territory and Australian Capital Territory. Estimates for Tasmania, Northern Territory and Australian Capital Territory are not listed individually as they are based on a small number of known outcomes which are subject to high levels of sampling error.

Source: The Post Programme Monitoring (PPM) Survey conducted 3 months after job seekers cease assistance.

Table 5.2 shows job seekers' satisfaction with the assistance provided by the managing agent. At the national level, over 94% of participants believed that the managing agents were *professional* and *helpful*. Over 85% of the job seekers were satisfied that the assistance was *tailored to individual needs*, *training was relevant*, and with the *overall quality of assistance and services*, except the participants in Queensland where 70% were satisfied.

Table 5.2: Job seeker's satisfaction with the assistance provided in Return to Work¹

	Very Satisfied (%)	Satisfied (%)	Satisfied (%)	Dissatisfied (%)	Very Dissatisfied (%)	Dissatisfied (%)
Professional, helpful staff who treated job seeker with respect						
New South Wales	66.2	30.1	96.3	2.0	1.7	3.7
Victoria	59.5	35.8	95.3	3.0	1.7	4.7
Queensland	47.5	44.8	92.3	4.6	3.1	7.7
South Australia	59.6	34.8	94.4	3.0	2.5	5.5
Western Australia	63.0	32.1	95.1	4.4	0.5	4.9
Australia ²	58.4	36.2	94.6	3.6	1.8	5.4
Assistance tailored to job seeker's individual needs						
New South Wales	53.7	39.1	92.8	4.9	2.2	7.1
Victoria	47.9	41.3	89.2	8.0	2.8	10.8
Queensland	33.0	49.2	82.2	12.0	5.8	17.8
South Australia	49.5	40.7	90.2	5.7	4.1	9.8
Western Australia	52.5	38.3	90.8	8.2	1.1	9.3
Australia ²	46.4	42.2	88.6	8.0	3.3	11.3
Training that was relevant for the job seeker						
New South Wales	46.1	44.0	90.1	5.6	4.2	9.8
Victoria	41.3	45.4	86.7	9.6	3.7	13.3
Queensland	25.8	48.4	74.2	15.3	10.5	25.8
South Australia	40.2	41.3	81.5	12.3	6.1	18.4
Western Australia	43.3	46.7	90.0	7.4	2.6	10.0
Australia ²	39.1	46.1	85.2	9.7	5.1	14.8
Overall quality of assistance and service provided to the job seeker						
New South Wales	52.7	39.9	92.6	4.1	3.4	7.5
Victoria	47.4	41.1	88.5	8.6	2.9	11.5
Queensland	29.4	49.9	79.3	13.5	7.2	20.7
South Australia	47.7	38.1	85.8	11.2	3.0	14.2
Western Australia	50.1	42.2	92.3	5.0	2.7	7.7
Australia ²	44.5	43.3	87.8	8.4	3.9	12.3

1 Job seekers who left a Return to Work placement by June 2001.

2 The national total includes Tasmania, Northern Territory and Australian Capital Territory. Estimates for Tasmania, Northern Territory and Australian Capital Territory are not listed individually as they are based on a small number of known outcomes which are subject to high levels of sampling error.

Source: The Post Programme Monitoring (PPM) Survey conducted 3 months after job seekers cease assistance.

Appendix: A

Response Rate by States

Table A.1 shows the number of exits and proportion of participants who responded to the PPM survey. The response rates are for exits up to end of September 2001. While a full enumeration is attempted for the Return to Work programme, some clients are not surveyed due to late notification of exits and where they were known to have proceeded to further labour market assistance. Numbers of clients surveyed are therefore lower than the number of exits shown.

Table A.1: Response rate from Return to Work programme by PPM Survey¹

State	Exits (n)	Surveyed (n)	Known Outcomes (n)	Response Rate (%)
New South Wales	1,078	1,040	711	68.4
Victoria	1,058	994	698	70.2
Queensland	932	895	614	68.6
South Australia	405	397	276	69.5
Western Australia	842	777	500	64.4
Tasmania	80	76	53	69.7
Australian Capital Territory	107	103	48	46.6
Northern Territory	76	73	44	66.3
Australia	4,560	4,355	2,944	67.6

Source: The Post Programme Monitoring (PPM) Survey conducted 3 months after job seekers cease assistance.

Technical Notes

Data sources

The Department uses a number of data sources to determine the outcomes achieved by job seekers during and after they have ceased labour market assistance.

Post Programme Monitoring (PPM) surveys have been undertaken since 1987 and used to assess the employment and education status of former programme participants three months after they exit assistance. The PPM survey attempts a full enumeration of all former programme participants except in the case of Job Matching where a sample of around 10% of job placements are followed up. Job seekers who leave employment assistance and then proceed to another employment assistance place before selection in the PPM survey, are excluded from the survey. For monitoring purposes these job seekers are considered to be in further assistance.

The overall response rate for the PPM survey, at around 60%, provides outcomes estimates that are generally accurate to within plus or minus 1 percentage point at the National level.

DEWR administrative systems record details of placements, commencements and paid outcomes for labour market assistance.

The PPM outcomes for Intensive Assistance are derived from two sources - DEWR administrative systems and the PPM survey. The administrative system provides information on the primary and secondary paid interim outcomes for job seekers three months after their placement into a job. The PPM survey provides the employment and training status of job seekers three months after they exited assistance without having achieved a paid interim outcome. The addition of the paid interim and PPM survey outcomes data for unpaid exits provides the labour force status for participants at the three month point in time and is comparable to measurements for other types of employment assistance.

Post Programme Monitoring Outcomes

PPM Measures of Outcomes

Table A below provides a summary of PPM Outcomes under current employment assistance (Job Network), mutual obligation arrangements (Work for the Dole) and a range of previous labour market programmes that operated in the mid-1990s (under the *Working Nation* banner). There are three measures of Outcomes rates:

- *employment* (the proportion of participants who achieved an employment outcome compared to all those who left assistance);
- *education and/or training* (the proportion of participants who achieved an education and/or training outcome compared to all those who left assistance); and
- *'positive' outcomes* (the proportion of participants who achieved an employment or education and training outcome compared to all those who left assistance).

Methodology for Measuring Outcomes Rates

In calculating PPM outcomes rates, a decision has to be made about the treatment of those participants who left the programme and went on to further assistance: whether they are included or excluded from the measure of outcomes:

- under past PPM methodology, this group was *excluded* from the measure. It is evident, however, that this resulted in higher outcomes rates when there was a high rate of churning between programmes (as reflected in the figures for "Further Assistance" in Table A);
- an improved methodology has been adopted that *includes* all participants who went on to further assistance. This provides a more comprehensive picture of what has happened to all participants in programmes.
 - this methodology is consistent with how the *cost per employment outcome* from programmes has always been measured in the Department's evaluations of labour market programmes.

Measures provided under the new methodology are set out in the final three right-hand columns of Table A. The previous estimates, based on the old method, are in the left-hand columns for comparative purposes only.

Table A: PPM Outcomes (3 months) (%): Old and New Methods

	<i>Old Method</i>			Further Assistance	<i>New Method</i>		
	Employment outcomes	Education & Training Outcomes	Positive Outcomes ¹		Employment outcomes	Education & Training Outcomes	Positive Outcomes ²
Job Network³							
Job Search Training	40.0	13.2	48.9	5.3	37.9	12.5	46.3
Intensive Assistance	35.9	7.9	42.4	2.6	35.0	7.7	41.3
NEIS	81.8	8.9	84.1	0.0	81.8	8.9	84.1
Work for the Dole³	32.9	13.3	42.8	16.6	27.4	11.1	35.7
Working Nation⁴							
Job Clubs	36.4	10.8	43.8	31.7	24.9	7.4	29.9
Working Nation⁵	35.1	12.4	44.3	22.0	27.4	9.7	34.6
Job Skills	31.9	8.9	37.8	11.7	28.1	7.8	33.4
JobTrain	33.7	12.3	42.7	30.0	23.6	8.6	29.9
JobStart	52.8	6.4	56.3	8.5	48.3	5.9	51.5
LEAP	25.8	10.3	33.7	13.1	22.4	8.9	29.3
New Work Opportunities	21.0	5.2	24.8	14.8	17.9	4.4	21.1
SkillShare	36.9	14.0	47.0	17.8	30.3	11.5	38.6
Special Intervention	21.4	20.7	39.4	38.7	13.1	12.7	24.2

1. The proportion of participants that achieved an employment and/or education/ training outcome *excluding* those who went onto further assistance.

2. The proportion of participants that achieved an employment and/or education/ training outcome *including* those who went onto further assistance.

3. Outcomes achieved in the 1999-2000 financial year.

4. This relates to the Working Nation programme, Job Clubs, which is similar to Job Search Training: outcomes for 1995-96 financial year.

5. Working Nation programmes replaced by Intensive Assistance: outcomes are for 1995-96 financial year. The results show the weighted average for the seven programmes and for each programme

Source: The Post Programme Monitoring Survey conducted 3 months after job seekers cease assistance and DEWR administrative systems.

Labour Market Assistance

Intensive Assistance: provides individually tailored assistance for up to two years to eligible job seekers who are more disadvantaged in the labour market, to prepare for, and obtain, sustainable employment. The level of funding is based on the job seekers' level of disadvantage. There are two funding levels, A and B.

Job seekers who transferred to a new provider as a result of the second contract period are treated as a new commencement but as the job seekers period of assistance has not been completed, they are included in the PPM survey.

Job Search Training: provides training for three weeks in job search techniques (such as résumé preparation, interview techniques and presentation skills) to give unemployed people the skills and confidence to seek and obtain employment.

Job Matching: delivers labour exchange services to job seekers including canvassing for jobs and matching and placing suitable unemployed people to these jobs, as well as preparing résumés for job seekers.

New Enterprise Incentive Scheme (NEIS): provides support and training for eligible job seekers who wish to pursue the option of self-employment.

Work for the Dole: provides assistance for job seekers to develop work habits, generic work skills and gain work experience by participating in community projects and activities for up to 26 weeks over a 12 month period.

Indigenous Employment Programme: replaced the Training for Aboriginals and Torres Strait Islanders Programme (TAP) and has several components. It includes Wage Assistance which is a wage subsidy paid to employers over 26 weeks providing on-going employment. In Structured Training and Employment Projects (STEP) employers in the private sector and regional and community based employment sponsor organisations provide at least 5 jobs, generally involving accredited training, usually a traineeship, to participants for a minimum period of 12 months.

Community Support Programme: helps disadvantaged job seekers access counselling, stable accommodation, alcohol or drug rehabilitation and other activities addressing significant needs.

Participation is voluntary and assistance can be for up to two years.

Return to Work Programme: helps job seekers who have been absent for two years or more due to unpaid caring responsibilities increase their skills and confidence so they can re-enter the work force.

Self-Employment Development Scheme (SEDS): allow job seekers to undertake approved activities to develop self-employment opportunities for three months. The business viability is assessed by a NEIS Managing agent and approved by Centrelink.

Definitions

Australian Job Search: Lists all vacancies notified to the Job Network and provides information on Job Network members. Is available in Centrelink and Job Network member offices and the DEWR Internet site.

Community Development Employment Projects (CDEP): administered by the Aboriginal and Torres Strait Islander Commission - a scheme generally providing opportunities for part time work paid at the equivalent of unemployment allowances to residents of indigenous communities in remote locations. Positive and employment outcomes exclude indigenous job seekers who return to a CDEP after leaving labour market assistance.

Community Work Coordinators: are contracted to develop Work for the Dole projects/activities and manage the placement of eligible job seekers into those projects/activities.

Educational attainment: refers to the highest educational level completed by job seekers. If a job seeker did not complete Year 12 then they will be included in the Year 10 category.

Eligible vacancy: is a job vacancy listed on the Australian Job Search database that are eligible for a payment under Job Matching.

Further Assistance: includes job seekers who proceed to another DEWR or DEST funded employment assistance within three months of exiting other employment assistance. It includes commencements in Job Search Training, Intensive Assistance, New Apprenticeships, NEIS, Work for the Dole, Green Corps, Advanced English for Migrants Programme (AEMP) and IEP - STEP and IEP - Wage Assistance. Job Matching is not regarded as further assistance.

Income support recipients: includes job seekers registered with Centrelink as unemployed and in receipt of Newstart Allowance (NSA) or job seekers aged 15 to 24 not in full-time education and in receipt of Youth Allowance (YA).

Job Matching Only (JMO): Job seekers, irrespective of income support who are eligible for Job Matching Only services but not eligible for other Job Network services. JMOs can renew their registration as unemployed every three months with either Centrelink or Job Network members.

Job Matching placements: include placements provided under Job Matching and job placements under Intensive Assistance.

Job Network Eligible (JNE): Job seekers who are receiving income support payments, and young people not in full-time study irrespective of income support. CDEP participants are eligible for Job Matching services. These people may be eligible for other Job Network services, subject to eligibility requirements.

Job Seeker Classification Instrument (JSCI): a measurement of a job seeker's relative disadvantage in obtaining employment and is used to determine the level of labour market assistance required.

Long term recipients: Job seekers who have been registered with Centrelink as unemployed for 12 months or more and receiving income support.

NESB: migrants from a Non-English-speaking background.

Outcomes qualifying for a claim for payment: Intensive Assistance or Job Search Training outcomes where the conditions for a claim for a paid outcome have been met. An actual claim may or may not have been made. This has not been included in this report.

Placed, awaiting an outcome: Placement of an Intensive Assistance or Job Search Training job seeker in employment or study but where the 13 week paid outcome mark has yet to be reached. This has not been included in this report.

Paid Interim Outcomes: Intensive Assistance outcomes where a claim for payment has been approved after placement of a job seeker in employment or study for 13 weeks. This has not been included in this report.

Paid Final Outcomes: Intensive Assistance outcomes where a claim for payment has been approved after placement of a job seeker in employment or study for 26 weeks. This has not been included in this report.

Post Assistance Off-Income Support Outcomes: refers to the proportion of Newstart or Youth Allowance (Other) recipients who were off Newstart or Youth Allowance (Other) or any other type allowance recorded on the Integrated Employment System three months after leaving assistance. Job seekers who move from Newstart or Youth Allowance (Other) to income support payments not recorded on the Integrated Employment System, such as the Community Employment Development Projects (CDEP), age pension or any other pension where the job seekers is not registered with Centrelink as looking for work, are counted as off-benefit outcomes.

Short Term Recipients: are job seekers who have been registered with Centrelink as unemployed for less than 12 months and in receipt of income support.

Unpaid exits: Exits from Intensive Assistance that do not involve a paid outcome.

Very Long Term Recipients: are job seekers who have been registered with Centrelink as unemployed and in receipt of income support for 24 months or more unless otherwise stated.

Work for the Dole commencement: Job seekers are required to participate in WfD for up to six months over a 12-month period. This means that job seekers

can participate in a number of different WfD projects and with different CWCs before completing their placement. Each time a job seeker starts with a CWC, a new commencement is recorded.

Work for the Dole exit: For the purposes of PPM, job seekers are surveyed whenever they have a break between CWC placements of more than 3 months and in relation to their last CWC placement in the 12 month period.

Regional Coverage

Regions used in this report are based on the 19 tender regions for the second Job Network contract period.

DEWR labour market regions

