

LABOUR MARKET AND RELATED PAYMENTS

a monthly profile

Note: The Australian Bureau of Statistics (ABS) produces the official unemployment statistics. The figures contained in this publication are different from the ABS unemployment figures as the ABS and the Department of Education, Employment and Workplace Relations (DEEWR) use different definitions to identify the unemployed and different methods of counting (see the Appendix for more information).

This publication can be found at <http://www.workplace.gov.au/lmrp>

October 2008

Embargoed

Until 11.30 am, 19 November 2008

Annual Subscription - \$65.00

CONTENTS

	<i>Page</i>
Introduction	1
Statistical Highlights	2
Tables	
1. Labour Market Payments - Time Series	3
2. Newstart Allowees - Derivation of the job seeker population	4
3. Youth Allowees (other) - Derivation of the job seeker population	5
4. Job seekers receiving Newstart Allowance and Youth Allowance (other) - Time Series	6
5. Job seekers receiving Newstart Allowance and Youth Allowance (other) by State	7
6. Job seekers receiving Newstart Allowance and Youth Allowance (other) by Age and Sex	8
7. Job seekers receiving Newstart Allowance and Youth Allowance (other) by Area Support Office and Customer Service Centre	9
8. Job seekers receiving Newstart Allowance and Youth Allowance (other) by Fortnightly Earnings and Sex	23
Explanatory Notes	24
Glossary	30
Appendix	33
For More Information	36

INTRODUCTION

This publication presents statistical information on a monthly basis for the various types of labour market payments delivered by Centrelink on behalf of the Department of Education, Employment and Workplace Relations (DEEWR). This publication was produced previously by the Department of Employment and Workplace Relations (DEWR).

This publication covers NSA and YA(o) in some detail, and to a lesser extent, MAA, PA, WA, YA(FTS) and YA (Australian Apprentices).

Table 1 provides information on the total number of NSA and YA recipients. The YA population is broken down into YA(o), YA(FTS) and YA(Australian Apprentices) categories. The total numbers of MAA, PA and WA recipients are also provided in this table.

Tables 2 and 3 show the derivation of the NSA and YA(o) job seeker populations (see the reference to job seekers in the 'Comparability of data' section of the Explanatory Notes). These populations are added together to derive the total number of job seekers.

Tables 4 to 8 provide information on the total job seeker population.

When using time series figures, it is important to note that changes have occurred over time to the conditions of eligibility for different payments. Details of these changes are provided in the Explanatory Notes.

All media inquiries should be directed to the Centrelink National Media Officer on (02) 6155 0067. For more general inquiries regarding further statistical information please refer to the last page of this publication for other contact details.

The next issue of this publication is scheduled for release on 24 December 2008.

STATISTICAL HIGHLIGHTS – October 2008

Between October 2007 and October 2008:

Total Newstart Allowance (NSA) recipients and Youth Allowance (other) (YA(o)) recipients **increased by 0.8%** overall from 489,731 to 493,773 and

- ◆ increased 0.4% for NSA from 429,811 to 431,546 and
- ◆ increased 3.9% for YA(o) from 59,920 to 62,227.

The number of job seekers **decreased by 4.2%** overall from 297,048 to 284,622 and

- ◆ decreased 5.6% for NSA recipients from 251,125 to 237,111 and
- ◆ increased 3.5% for YA(o) recipients from 45,923 to 47,511.

Long-term job seekers decreased by 13.6% from 164,716 to 142,368.

Short-term job seekers increased by 7.5% from 132,332 to 142,254.

For comparisons between DEEWR unemployment labour market payment numbers and ABS labour force unemployment statistics, see Appendix.

**Newstart Allowance and Youth Allowance (other)
October 2006 to October 2008**

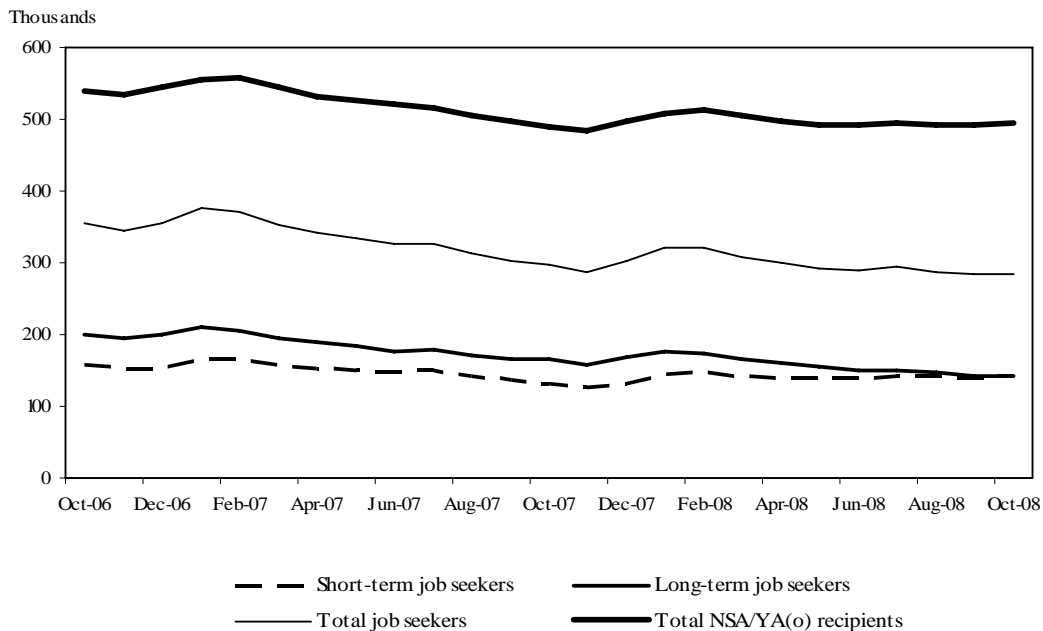


TABLE 1 - LABOUR MARKET PAYMENTS - TIME SERIES (a)

	Newstart Allowance		Youth Allowance			Mature Age Allowance	Partner Allowance	Widow Allowance
	Long-term (b)	Total	Other	Full-time Students (c)	Australian Apprentices (d)			
February 1994 (e)	472,785	977,796
October 2006	284,276	470,340	69,511	277,061	3,740	9,430	55,683	43,349
November 2006	282,694	466,631	68,721	267,042	3,683	8,892	54,611	43,112
December 2006	284,499	469,233	76,480	226,902	3,571	8,293	53,398	42,903
January 2007	286,614	478,033	77,358	216,869	3,487	7,745	52,205	42,530
February 2007	286,113	481,343	76,036	223,780	3,715	7,287	51,251	42,370
March 2007	281,937	473,278	71,619	239,502	4,087	6,751	50,058	42,032
April 2007	277,688	463,732	68,746	250,660	4,250	6,235	48,912	41,619
May 2007	274,568	458,297	67,973	256,805	4,341	5,790	47,896	41,245
June 2007	271,439	452,733	67,852	261,197	4,435	5,284	46,709	40,886
July 2007	269,816	448,833	67,617	256,808	4,416	4,796	45,917	40,735
August 2007	267,972	442,112	63,717	263,166	4,490	4,381	45,459	40,853
September 2007	266,180	435,711	62,042	265,669	4,509	3,981	45,058	41,019
October 2007	264,434	429,811	59,920	264,829	4,350	3,619	44,695	41,156
November 2007	261,930	424,168	59,967	249,546	4,093	3,242	44,358	41,278
December 2007	264,127	428,962	69,320	215,158	3,956	2,868	43,997	41,400
January 2008	266,199	437,918	69,709	206,509	3,746	2,518	43,434	41,297
February 2008	266,368	443,916	69,728	213,384	3,897	2,149	42,512	41,014
March 2008	263,759	438,786	65,889	227,301	4,094	1,797	41,528	40,729
April 2008	260,541	433,674	63,680	236,930	4,274	1,503	40,708	40,503
May 2008	257,363	429,363	63,395	245,421	4,419	1,166	39,804	40,124
June 2008	255,550	428,896	63,972	252,180	4,444	856	38,915	39,702
July 2008	254,723	429,989	65,514	248,493	4,402	586	38,109	39,321
August 2008	253,131	429,459	63,347	254,853	4,256	307	37,226	38,946
September 2008	251,987	429,426	62,832	258,973	4,018	47	36,411	38,640
October 2008	251,529	431,546	62,227	259,337	3,882	0	35,572	38,375
<i>Variation September 2008 - October 2008</i>								
Number	-458	2,120	-605	364	-136	-47	-839	-265
Per cent	-0.2	0.5	-1.0	0.1	-3.4	-100.0	-2.3	-0.7

(a) This table presents data using the revised method of measuring the number of people receiving labour market payments introduced in July 2002. Revised historical data from May 1998 to June 2002 is in Table A (May 1998 - June 2000) and Table 1 (July 2000 - July 2002) of July 2002 publication.

(b) Long-term Newstart allowees are persons who have been receiving income support for 12 months or more.

(c) The number of full time students does not include those who have traded in their entire Youth Allowance entitlement for a loan under the Student Financial Supplement Loan Scheme. The Government announced on 24 April 2003 that no further loans would be issued under this Scheme from 1 January 2004. For further details, refer to the Explanatory Notes at the back of this publication.

(d) Australian Apprenticeships combine employment with structured training to provide a nationally recognised qualification. Australian Apprentices enter formal agreements known as either 'Training Agreements' or 'Contracts of Training' which set out the relationship between the employer and the Australian Apprentice and their respective rights and responsibilities.

(e) February 1994 data has been included for comparison purposes due to the peak in the number of persons receiving JSA/NSA at this point in time.

Notes:

- Most of the figures in this publication are averages and have been rounded. As a result, discrepancies may occur between sums of component items and totals, and in the calculation of variations.

TABLE 2 - NEWSTART ALLOWEES - DERIVATION OF THE JOB SEEKER POPULATION

	September 2008	October			Variation September - October	
		Males	Females	Persons	Number	Per cent
Short-term NSA Customers	177,439	116,069	63,948	180,017	2,578	1.5
CPS recipients (a)	2,488	1,890	631	2,521	33	1.3
Did not receive a payment (b)	9,463	5,235	4,051	9,286	-177	-1.9
Received a payment	165,488	108,944	59,266	168,210	2,722	1.6
Incapacitated (c)	16,495	10,072	6,797	16,869	374	2.3
Training	14,390	9,323	5,175	14,498	108	0.8
Self-employment development (d)	552	370	231	601	49	8.9
Voluntary/part-time work (e)	4,895	1,634	3,436	5,070	175	3.6
Other/temporary exemptions (f)	14,397	8,472	6,076	14,548	151	1.0
Short-term NSA job seekers (g)	114,759	79,073	37,551	116,624	1,865	1.6
Long-term NSA Customers	251,987	145,351	106,178	251,529	-458	-0.2
CPS recipients (a)	6,363	4,220	2,061	6,281	-82	-1.3
Did not receive a payment (b)	8,836	4,027	4,224	8,251	-585	-6.6
Received a payment	236,788	137,104	99,893	236,997	209	0.1
Incapacitated (c)	17,285	9,127	7,981	17,108	-177	-1.0
Training	55,568	33,540	22,151	55,691	123	0.2
Self-employment development (d)	191	108	80	188	-3	-1.6
Voluntary/part-time work (e)	16,392	8,116	8,760	16,876	484	3.0
Other/temporary exemptions (f)	26,315	15,452	11,195	26,647	332	1.3
Long-term NSA job seekers (g)	121,037	70,761	49,726	120,487	-550	-0.5
All NSA Customers	429,426	261,420	170,126	431,546	2,120	0.5
CPS recipients (a)	8,851	6,110	2,692	8,802	-49	-0.6
Did not receive a payment (b)	18,299	9,262	8,275	17,537	-762	-4.2
Received a payment	402,276	246,048	159,159	405,207	2,931	0.7
Incapacitated (c)	33,780	19,199	14,778	33,977	197	0.6
Training	69,958	42,863	27,326	70,189	231	0.3
Self-employment development (d)	743	478	311	789	46	6.2
Voluntary/part-time work (e)	21,287	9,750	12,196	21,946	659	3.1
Other/temporary exemptions (f)	40,712	23,924	17,271	41,195	483	1.2
All NSA job seekers (g)	235,796	149,834	87,277	237,111	1,315	0.6

(a) Persons with NSA eligibility who received CDEP Participant Supplement or add ons while participating in CDEP Projects.

(b) Persons who did not receive a payment due to their income and/or that of their partner. This group is often referred to as zero-paid.

(c) Activity code "incapacitated" relates to NSA recipients who have become temporarily ill or incapacitated.

(d) Those customers exempted from job search while they develop self-employment opportunities.

(e) Those customers undertaking approved full-time voluntary work or combinations of voluntary and part-time work who are not required to seek work.

(f) Includes other customers known not to have job search obligations. See 'Job seekers' in Explanatory Notes.

(g) Those customers who received a payment and generally are required to search for work. These customers form the basis of the population group in Tables 4 - 7.

Notes:

- For information on short-term and long-term categories please refer to the Glossary.

- Most of the figures in this publication are averages and have been rounded. As a result, discrepancies may occur between sums of component items and totals, and in the calculation of variations.

TABLE 3 - YOUTH ALLOWEES (OTHER) - DERIVATION OF THE JOB SEEKER POPULATION

	September 2008	October			Variation September - October	
		Males	Females	Persons	Number	Per cent
Short-term YA (other) Customers	32,965	17,517	15,332	32,849	-116	-0.4
CPS recipients (a)	1,188	789	418	1,207	19	1.6
Did not receive a payment (b)	712	321	401	722	10	1.4
Received a payment	31,065	16,407	14,513	30,920	-145	-0.5
Part-time study & work (c)	4	1	1	2	-2	-50.0
Part-time study & other YA activities (d)	78	34	45	79	1	1.3
Incapacitated (e)	1,613	806	837	1,643	30	1.9
Training	1,685	957	695	1,652	-33	-2.0
Self-employment development (e)	10	4	2	6	-4	-40.0
Full-time voluntary work	0	0	0	0	0	0.0
Other non-job seekers (e)	1,987	832	1,076	1,908	-79	-4.0
Short-term YA (other) job seekers (f)	25,688	13,773	11,857	25,630	-58	-0.2
Long-term YA (other) Customers	29,867	13,794	15,584	29,378	-489	-1.6
CPS recipients (a)	875	539	294	833	-42	-4.8
Did not receive a payment (b)	823	360	499	859	36	4.4
Received a payment	28,169	12,895	14,791	27,686	-483	-1.7
Part-time study & work (c)	4	1	3	4	0	0.0
Part-time study & other YA activities (d)	64	34	36	70	6	9.4
Incapacitated (e)	1,134	408	686	1,094	-40	-3.5
Training	3,302	1,736	1,562	3,298	-4	-0.1
Self-employment development (e)	7	2	4	6	-1	-14.3
Full-time voluntary work	0	0	0	0	0	0.0
Other non-job seekers (e)	1,338	504	829	1,333	-5	-0.4
Long-term YA (other) job seekers (f)	22,320	10,210	11,671	21,881	-439	-2.0
All YA (other) Customers	62,832	31,311	30,916	62,227	-605	-1.0
CPS recipients (a)	2,063	1,328	712	2,040	-23	-1.1
Did not receive a payment (b)	1,535	681	900	1,581	46	3.0
Received a payment	59,234	29,302	29,304	58,606	-628	-1.1
Part-time study & work (c)	8	2	4	6	-2	-25.0
Part-time study & other YA activities (d)	142	68	81	149	7	4.9
Incapacitated (e)	2,747	1,214	1,523	2,737	-10	-0.4
Training	4,987	2,693	2,257	4,950	-37	-0.7
Self-employment development (e)	17	6	6	12	-5	-29.4
Full-time voluntary work	0	0	0	0	0	0.0
Other non-job seekers (e)	3,325	1,336	1,905	3,241	-84	-2.5
All YA (other) job seekers (f)	48,008	23,983	23,528	47,511	-497	-1.0

(a) Persons with YA eligibility who received CDEP Participant Supplement or add ons while participating in CDEP projects.

(b) Persons who did not receive a payment due to their own income and/or that of their partner or parents, where applicable. This group is often referred to as zero-paid.

(c) Those customers undertaking approved part-time study and work who are considered to have a full activity load and are not required to seek work.

(d) Those customers undertaking approved part-time study and other activities who are considered to have a full activity load and are not required to seek work.

(e) These categories are defined in the same way as in Table 2, except that those customers combining these activities with part-time study are classified under part-time study and other activities.

(f) Those customers who received a payment and generally are required to search for work. These customers form the basis of the population group in Tables 4 - 7.

Notes:

- For information on short-term and long-term categories please refer to the Glossary.

- Most of the figures in this publication are averages and have been rounded. As a result, discrepancies may occur between sums of component items and totals, and in the calculation of variations.

TABLE 4 - JOB SEEKERS RECEIVING NEWSTART ALLOWANCE AND YOUTH ALLOWANCE (OTHER)
TIME SERIES (a)

	Short-term	Long-term	Total
October 2006	156,815	198,967	355,782
November 2006	152,125	193,719	345,844
December 2006	153,342	201,044	354,386
January 2007	165,924	209,395	375,319
February 2007	165,581	205,384	370,965
March 2007	157,827	195,351	353,178
April 2007	153,350	188,871	342,221
May 2007	151,083	183,234	334,317
June 2007	148,602	177,562	326,164
July 2007	149,043	178,467	327,510
August 2007	141,433	171,107	312,540
September 2007	136,186	166,762	302,948
October 2007	132,332	164,716	297,048
November 2007	127,425	159,046	286,471
December 2007	132,454	169,573	302,027
January 2008	145,046	177,005	322,051
February 2008	147,610	173,316	320,926
March 2008	141,568	165,748	307,316
April 2008	139,811	160,030	299,841
May 2008	138,808	154,313	293,121
June 2008	140,066	150,517	290,583
July 2008	143,050	150,831	293,881
August 2008	141,458	146,533	287,991
September 2008	140,447	143,357	283,804
October 2008	142,254	142,368	284,622
<i>Variation September 2008 - October 2008</i>			
Number	1,807	-989	818
Per cent	1.3	-0.7	0.3

(a) This table presents data using the revised method of measuring the number of people receiving labour market payment introduced in July 2002. Revised historical data from May 1998 to June 2002 is in Table B of July 2002 publication.

Notes:

- For information on short-term and long-term categories please refer to the Glossary.

- Most of the figures in this publication are averages and have been rounded. As a result, discrepancies may occur between sums of component items and totals, and in the calculation of variations.

**TABLE 5 - JOB SEEKERS RECEIVING NEWSTART ALLOWANCE AND YOUTH ALLOWANCE (OTHER)
BY STATE**

<i>State</i>	September 2008	October 2008	Variation	
			September - October Number	Per cent
SHORT-TERM JOB SEEKERS				
New South Wales	49,119	49,520	401	0.8
Victoria	32,422	32,920	498	1.5
Queensland	27,940	28,329	389	1.4
South Australia	11,346	11,534	188	1.7
Western Australia	11,463	11,774	311	2.7
Tasmania	4,068	4,147	79	1.9
Northern Territory	2,900	2,795	-105	-3.6
Australian Capital Territory	1,189	1,235	46	3.9
AUSTRALIA	140,447	142,254	1,807	1.3
LONG-TERM JOB SEEKERS				
New South Wales	53,532	53,148	-384	-0.7
Victoria	33,472	33,043	-429	-1.3
Queensland	21,011	20,912	-99	-0.5
South Australia	13,588	13,680	92	0.7
Western Australia	8,955	8,973	18	0.2
Tasmania	5,882	5,795	-87	-1.5
Northern Territory	5,806	5,730	-76	-1.3
Australian Capital Territory	1,111	1,087	-24	-2.2
AUSTRALIA	143,357	142,368	-989	-0.7
TOTAL JOB SEEKERS				
New South Wales	102,651	102,668	17	0.0
Victoria	65,894	65,963	69	0.1
Queensland	48,951	49,241	290	0.6
South Australia	24,934	25,214	280	1.1
Western Australia	20,418	20,747	329	1.6
Tasmania	9,950	9,942	-8	-0.1
Northern Territory	8,706	8,525	-181	-2.1
Australian Capital Territory	2,300	2,322	22	1.0
AUSTRALIA	283,804	284,622	818	0.3

Notes:

- Most of the figures in this publication are averages and have been rounded. As a result, discrepancies may occur between sums of component items and totals, and in the calculation of variations.

**TABLE 6 - JOB SEEKERS RECEIVING NEWSTART ALLOWANCE AND YOUTH ALLOWANCE (OTHER)
BY AGE AND SEX, AS AT OCTOBER 2008**

Age	Short-term job seekers		Long-term job seekers		Total job seekers	
	Number	Per cent	Number	Per cent	Number	Per cent
MALES						
Less than 18 years	4,443	4.8	2,018	2.5	6,461	3.7
18 - 20 years	9,330	10.0	8,192	10.1	17,522	10.1
21 - 24 years	14,807	15.9	9,540	11.8	24,347	14.0
25 - 29 years	14,965	16.1	9,938	12.3	24,903	14.3
30 - 39 years	22,309	24.0	17,492	21.6	39,801	22.9
40 - 49 years	14,660	15.8	14,504	17.9	29,164	16.8
50 - 59 years	8,850	9.5	12,001	14.8	20,851	12.0
60 years and over	3,481	3.7	7,286	9.0	10,767	6.2
Total	92,845	100.0	80,971	100.0	173,816	100.0
FEMALES						
Less than 18 years	4,620	9.4	2,609	4.2	7,229	6.5
18 - 20 years	7,237	14.6	9,061	14.8	16,298	14.7
21 - 24 years	7,985	16.2	7,075	11.5	15,060	13.6
25 - 29 years	5,233	10.6	5,051	8.2	10,284	9.3
30 - 39 years	7,698	15.6	9,611	15.7	17,309	15.6
40 - 49 years	8,427	17.1	13,249	21.6	21,676	19.6
50 - 59 years	6,411	13.0	11,220	18.3	17,631	15.9
60 years and over	1,798	3.6	3,521	5.7	5,319	4.8
Total	49,409	100.0	61,397	100.0	110,806	100.0
PERSONS						
Less than 18 years	9,063	6.4	4,627	3.3	13,690	4.8
18 - 20 years	16,567	11.6	17,253	12.1	33,820	11.9
21 - 24 years	22,792	16.0	16,615	11.7	39,407	13.8
25 - 29 years	20,198	14.2	14,989	10.5	35,187	12.4
30 - 39 years	30,007	21.1	27,103	19.0	57,110	20.1
40 - 49 years	23,087	16.2	27,753	19.5	50,840	17.9
50 - 59 years	15,261	10.7	23,221	16.3	38,482	13.5
60 years and over	5,279	3.7	10,807	7.6	16,086	5.7
Total	142,254	100.0	142,368	100.0	284,622	100.0

**TABLE 7 - JOB SEEKERS RECEIVING NEWSTART ALLOWANCE AND YOUTH ALLOWANCE
(OTHER) BY AREA SUPPORT OFFICE AND CUSTOMER SERVICE CENTRE**

<i>Area Support Office and Customer Service Centre</i>	September 2008	October 2008	Variation	
			September - October Number	Per cent
<i>SYDNEY EAST NEW SOUTH WALES</i>				
Bankstown	2,712	2,748	36	1.3
Bondi Junction	870	877	7	0.8
Burwood	1,268	1,269	1	0.1
Campsie	2,030	2,091	61	3.0
Caringbah	947	938	-9	-1.0
Chatswood	609	612	3	0.5
Corrimal	949	945	-4	-0.4
Dapto	1,043	1,058	15	1.4
Darlinghurst	1,231	1,258	27	2.2
Darlinghurst CCU	30	30	0	%
Haymarket	1	0	-1	%
Hornsby	607	645	38	6.3
Hurstville	1,038	1,061	23	2.2
Lakemba	24	23	-1	%
Leichhardt	989	971	-18	-1.8
Maroubra	1,096	1,099	3	0.3
Marrickville	1,202	1,188	-14	-1.2
Northern Beaches	836	856	20	2.4
Participation Sydney East	8	5	-3	%
Redfern	999	1,011	12	1.2
Revesby	5	7	2	%
Rockdale	1,007	1,023	16	1.6
Ryde	649	670	21	3.2
Shellharbour	1,278	1,249	-29	-2.3
Sutherland	336	320	-16	-4.8
Wollongong	1,238	1,254	16	1.3
Other (a)	10	9	-1	%
Total	23,012	23,217	205	0.9

Note: For footnotes see end of table.

**TABLE 7 - JOB SEEKERS RECEIVING NEWSTART ALLOWANCE AND YOUTH ALLOWANCE
(OTHER) BY AREA SUPPORT OFFICE AND CUSTOMER SERVICE CENTRE**

<i>Area Support Office and Customer Service Centre</i>	September 2008	October 2008	Variation	
			September - October Number	Per cent
<i>SYDNEY WEST NEW SOUTH WALES</i>				
Auburn	1,743	1,804	61	3.5
Baulkham Hills	502	530	28	5.6
Blacktown	2,512	2,502	-10	-0.4
Cabramatta	1,678	1,673	-5	-0.3
Camden	568	545	-23	-4.0
Campbelltown	1,850	1,817	-33	-1.8
Fairfield	2,523	2,514	-9	-0.4
Hawkesbury	725	755	30	4.1
Ingleburn	1,200	1,155	-45	-3.8
Katoomba	614	607	-7	-1.1
Liverpool	2,999	3,008	9	0.3
Merrylands	1,456	1,476	20	1.4
Mt Druitt	2,501	2,425	-76	-3.0
Parramatta	1,421	1,453	32	2.3
Penrith	1,563	1,552	-11	-0.7
Springwood	292	304	12	4.1
St Marys	1,286	1,303	17	1.3
Other (a)	26	22	-4	%
Total	25,459	25,445	-14	-0.1

Note: For footnotes see end of table.

**TABLE 7 - JOB SEEKERS RECEIVING NEWSTART ALLOWANCE AND YOUTH ALLOWANCE
(OTHER) BY AREA SUPPORT OFFICE AND CUSTOMER SERVICE CENTRE**

<i>Area Support Office and Customer Service Centre</i>	September 2008	October 2008	Variation	
			September - October Number	Per cent
HUNTER NEW SOUTH WALES				
Armidale	809	784	-25	-3.1
Cessnock	789	792	3	0.4
Charlestown	1,668	1,661	-7	-0.4
Ettalong	836	818	-18	-2.2
Glen Innes	237	229	-8	-3.4
Gosford	1,416	1,443	27	1.9
Gunnedah	403	393	-10	-2.5
Inverell	617	615	-2	-0.3
Kempsey	905	893	-12	-1.3
Kurri Kurri	392	403	11	2.8
Lakehaven	1,443	1,484	41	2.8
Maitland	1,389	1,378	-11	-0.8
Mayfield	901	894	-7	-0.8
Muswellbrook	397	399	2	0.5
Nambucca Heads	800	779	-21	-2.6
Nelson Bay	477	450	-27	-5.7
Newcastle	1,115	1,116	1	0.1
Port Macquarie	1,376	1,374	-2	-0.1
Raymond Terrace	835	826	-9	-1.1
Singleton	257	251	-6	-2.3
Tamworth	1,539	1,541	2	0.1
Taree	1,595	1,647	52	3.3
The Entrance	1,188	1,172	-16	-1.3
Toronto	828	829	1	0.1
Tuncurry (Forster)	849	839	-10	-1.2
Wallsend	1,244	1,229	-15	-1.2
Wyong	720	706	-14	-1.9
Other (a)	32	31	-1	%
Total	25,057	24,976	-81	-0.3

Note: For footnotes see end of table.

**TABLE 7 - JOB SEEKERS RECEIVING NEWSTART ALLOWANCE AND YOUTH ALLOWANCE
(OTHER) BY AREA SUPPORT OFFICE AND CUSTOMER SERVICE CENTRE**

<i>Area Support Office and Customer Service Centre</i>	September 2008	October 2008	Variation	
			September - October Number	Per cent
<i>SOUTH WEST NEW SOUTH WALES</i>				
Batemans Bay	819	835	16	2.0
Bathurst	891	882	-9	-1.0
Bega	675	680	5	0.7
Belconnen	685	663	-22	-3.2
Bowral	424	429	5	1.2
Braddon	685	699	14	2.0
Cooma	255	283	28	11.0
Cowra	460	449	-11	-2.4
Dubbo	1,929	1,904	-25	-1.3
Goulburn	720	687	-33	-4.6
Griffith	514	550	36	7.0
Gungahlin	80	76	-4	%
Lanyon	32	31	-1	%
Leeton	325	327	2	0.6
Lithgow	526	526	0	0.0
Mudgee	613	622	9	1.5
Narooma	354	365	11	3.1
Nowra	1,929	1,932	3	0.2
Orange	1,015	949	-66	-6.5
Parkes	894	867	-27	-3.0
Queanbeyan	406	394	-12	-3.0
Tuggeranong	475	497	22	4.6
Tumut	259	272	13	5.0
Ulladulla	533	521	-12	-2.3
Wagga	1,407	1,379	-28	-2.0
Woden	336	361	25	7.4
Yass	100	89	-11	%
Young	395	389	-6	-1.5
Other (a)	17	16	-1	%
Total	17,753	17,674	-79	-0.4

Note: For footnotes see end of table.

**TABLE 7 - JOB SEEKERS RECEIVING NEWSTART ALLOWANCE AND YOUTH ALLOWANCE
(OTHER) BY AREA SUPPORT OFFICE AND CUSTOMER SERVICE CENTRE**

<i>Area Support Office and Customer Service Centre</i>	September 2008	October 2008	Variation	
			September - October Number	Per cent
<i>NORTH CENTRAL VICTORIA</i>				
Airport West	742	766	24	3.2
Albury	1,880	1,888	8	0.4
Box Hill	1,358	1,369	11	0.8
Broadmeadows	2,899	2,975	76	2.6
Camberwell	617	639	22	3.6
Darebin	2,592	2,527	-65	-2.5
Deniliquin	293	279	-14	-4.8
Echuca	413	414	1	0.2
Epping	1,374	1,389	15	1.1
Greensborough	454	69	-385	%
Heidelberg	690	1,047	357	51.7
Moreland	1,474	1,453	-21	-1.4
Newmarket	949	942	-7	-0.7
Seymour	524	528	4	0.8
Shepparton	1,853	1,882	29	1.6
South Melbourne	503	507	4	0.8
Sunbury	552	565	13	2.4
Wangaratta	1,369	1,360	-9	-0.7
Windsor	1,736	1,695	-41	-2.4
Yarra	1,321	1,289	-32	-2.4
Other (a)	19	19	0	%
Total	23,612	23,602	-10	0.0

Note: For footnotes see end of table.

**TABLE 7 - JOB SEEKERS RECEIVING NEWSTART ALLOWANCE AND YOUTH ALLOWANCE
(OTHER) BY AREA SUPPORT OFFICE AND CUSTOMER SERVICE CENTRE**

<i>Area Support Office and Customer Service Centre</i>	September 2008	October 2008	Variation	
			September - October Number	Per cent
<i>SOUTH EAST VICTORIA</i>				
Bairnsdale	719	720	1	0.1
Belgrave	345	332	-13	-3.8
Cheltenham	1,112	1,128	16	1.4
Cranbourne	917	908	-9	-1.0
Dandenong	1,978	2,033	55	2.8
Fountain Gate	1,341	1,379	38	2.8
Frankston	1,950	1,941	-9	-0.5
Glen Waverley	632	640	8	1.3
Hastings	423	411	-12	-2.8
Lilydale	1,154	1,153	-1	-0.1
Mornington	342	338	-4	-1.2
Morwell	2,061	2,018	-43	-2.1
Oakleigh	1,155	1,165	10	0.9
Pakenham	457	422	-35	-7.7
Ringwood	1,214	1,234	20	1.6
Rosebud	801	824	23	2.9
Rowville	292	299	7	2.4
Sale	636	642	6	0.9
Springvale	1,482	1,457	-25	-1.7
Wantirna	834	848	14	1.7
Warragul	522	503	-19	-3.6
Wonthaggi	459	432	-27	-5.9
Other (a)	8	8	0	%
Total	20,834	20,835	1	0.0

Note: For footnotes see end of table.

**TABLE 7 - JOB SEEKERS RECEIVING NEWSTART ALLOWANCE AND YOUTH ALLOWANCE
(OTHER) BY AREA SUPPORT OFFICE AND CUSTOMER SERVICE CENTRE**

<i>Area Support Office and Customer Service Centre</i>	September 2008	October 2008	Variation	
			September - October Number	Per cent
WEST VICTORIA				
Ararat	202	197	-5	-2.5
Ballarat	2,159	2,198	39	1.8
Bendigo	2,085	2,120	35	1.7
Bendigo Central	349	353	4	1.1
Colac	418	422	4	1.0
Corio	1,411	1,377	-34	-2.4
Footscray	1,119	1,125	6	0.5
Geelong	2,408	2,420	12	0.5
Hamilton	367	365	-2	-0.5
Horsham	489	486	-3	-0.6
Maryborough	375	362	-13	-3.5
Melton	960	965	5	0.5
Mildura	1,519	1,523	4	0.3
Newport	819	825	6	0.7
Portland	308	296	-12	-3.9
Stawell	187	172	-15	-8.0
Sunshine	2,140	2,131	-9	-0.4
Swan Hill	758	770	12	1.6
Warrnambool	737	742	5	0.7
Watergardens	2,442	2,454	12	0.5
Werribee	2,262	2,251	-11	-0.5
Other (a)	9	6	-3	%
Total	23,523	23,560	37	0.2

Note: For footnotes see end of table.

**TABLE 7 - JOB SEEKERS RECEIVING NEWSTART ALLOWANCE AND YOUTH ALLOWANCE
(OTHER) BY AREA SUPPORT OFFICE AND CUSTOMER SERVICE CENTRE**

<i>Area Support Office and Customer Service Centre</i>	September 2008	October 2008	Variation	
			September - October Number	Per cent
CENTRAL & NORTHERN QUEENSLAND				
Atherton	544	552	8	1.5
Ayr	275	266	-9	-3.3
Bamaga RASC (Nth Peninsula RASC)	28	26	-2	%
Biloela	123	137	14	11.4
Bowen	237	228	-9	-3.8
Cairns Families	6	3	-3	%
Cairns Jobseekers	2,672	2,749	77	2.9
Cairns Remote (Indigenous ISC)	525	553	28	5.3
Cairns Seniors & Carers	4	6	2	%
Charters Towers	214	220	6	2.8
Edmonton	0	0	0	%
Emerald	223	211	-12	-5.4
Gladstone	622	636	14	2.3
Greenfields	1	0	-1	%
Ingham	198	200	2	1.0
Innisfail	455	458	3	0.7
Longreach	74	68	-6	%
Mackay Jobseekers	887	889	2	0.2
Mackay Seniors & Carers	1	1	0	%
Mareeba	429	402	-27	-6.3
Mossman	323	321	-2	-0.6
Mt Isa	670	686	16	2.4
Normanton	120	123	3	2.5
Palm Island	296	308	12	4.1
Rockhampton Families	0	0	0	%
Rockhampton Jobseekers	1,478	1,458	-20	-1.4
Rockhampton Seniors & Carers	0	3	3	%
Smithfield	0	0	0	%
Thursday Island	233	244	11	4.7
Townsville City	4	2	-2	%
Townsville Families	0	0	0	%
Townsville Jobseekers	2,044	2,058	14	0.7
Townsville Seniors & Carers	5	3	-2	%
Western Cape RASC	201	208	7	3.5
Whitsunday	259	236	-23	-8.9
Yarrabah RASC	281	296	15	5.3
Yeppoon	277	270	-7	-2.5
Other (a)	32	35	3	%
Total	13,741	13,856	115	0.8

Note: For footnotes see end of the table.

**TABLE 7 - JOB SEEKERS RECEIVING NEWSTART ALLOWANCE AND YOUTH ALLOWANCE
(OTHER) BY AREA SUPPORT OFFICE AND CUSTOMER SERVICE CENTRE**

<i>Area Support Office and Customer Service Centre</i>	September 2008	October 2008	Variation	
			September - October Number	Per cent
<i>SOUTH & EAST QUEENSLAND</i>				
Bundaberg	2,277	2,309	32	1.4
Caboolture	1,440	1,415	-25	-1.7
Caboolture FCC and SC&R	0	0	0	%
Caloundra	678	683	5	0.7
Cherbourg	79	94	15	%
Chermside	647	676	29	4.5
Fortitude Valley	775	779	4	0.5
Gympie	927	895	-32	-3.5
Hervey Bay	1,075	1,066	-9	-0.8
Kawana Waters	329	330	1	0.3
Kingaroy	560	578	18	3.2
Kippa-Ring	711	663	-48	-6.8
Maroochydore	938	908	-30	-3.2
Maryborough	905	927	22	2.4
Mitchelton	627	641	14	2.2
Nambour	624	636	12	1.9
Noosa	645	619	-26	-4.0
Nundah	654	657	3	0.5
Strathpine	700	710	10	1.4
Toowong	525	499	-26	-5.0
Other (a)	259	304	45	17.4
Total	15,375	15,389	14	0.1

Note: For footnotes see end of table.

**TABLE 7 - JOB SEEKERS RECEIVING NEWSTART ALLOWANCE AND YOUTH ALLOWANCE
(OTHER) BY AREA SUPPORT OFFICE AND CUSTOMER SERVICE CENTRE**

<i>Area Support Office and Customer Service Centre</i>	September 2008	October 2008	Variation	
			September - October Number	Per cent
<i>SOUTH & WEST QUEENSLAND</i>				
Beenleigh	1,281	1,313	32	2.5
Browns Plains	1,037	1,088	51	4.9
Capalaba	399	415	16	4.0
Charleville	161	179	18	11.2
Cleveland	571	556	-15	-2.6
Dalby	413	418	5	1.2
Goodna	771	770	-1	-0.1
Goondiwindi	283	280	-3	-1.1
Inala	955	947	-8	-0.8
Ipswich	1,643	1,593	-50	-3.0
Mt Gravatt	1,039	1,066	27	2.6
Roma	124	121	-3	-2.4
South Brisbane	580	601	21	3.6
Stanthorpe	364	346	-18	-4.9
Stones Corner	951	928	-23	-2.4
Toowoomba	1,665	1,671	6	0.4
Warwick	383	382	-1	-0.3
Woodridge	1,246	1,219	-27	-2.2
Wynnum	561	594	33	5.9
Other (a)	27	23	-4	%
Total	14,454	14,510	56	0.4

Note: For footnotes see end of table.

**TABLE 7 - JOB SEEKERS RECEIVING NEWSTART ALLOWANCE AND YOUTH ALLOWANCE
(OTHER) BY AREA SUPPORT OFFICE AND CUSTOMER SERVICE CENTRE**

<i>Area Support Office and Customer Service Centre</i>	September 2008	October 2008	Variation	
			September - October Number	Per cent
<i>SOUTH AUSTRALIA</i>				
Berri	806	830	24	3.0
Broken Hill	759	776	17	2.2
Ceduna	250	258	8	3.2
Coober Pedy	140	144	4	2.9
Currie Street	453	455	2	0.4
Elizabeth	2,134	2,198	64	3.0
Enfield	1,275	1,264	-11	-0.9
Gawler	918	912	-6	-0.7
Glenelg	654	644	-10	-1.5
Kadina	575	584	9	1.6
Kilkenny	1,427	1,444	17	1.2
Marion	1,487	1,516	29	2.0
Modbury	1,343	1,379	36	2.7
Mt Barker	482	492	10	2.1
Mt Gambier	1,099	1,082	-17	-1.5
Murray Bridge	752	721	-31	-4.1
Noarlunga	2,266	2,303	37	1.6
Norwood	1,212	1,250	38	3.1
Port Adelaide	1,253	1,290	37	3.0
Port Augusta	684	678	-6	-0.9
Port Lincoln	548	578	30	5.5
Port Pirie	783	778	-5	-0.6
Salisbury	2,081	2,121	40	1.9
Torrensville	974	1,035	61	6.3
Victor Harbor	538	519	-19	-3.5
Whyalla	672	650	-22	-3.3
Other (a)	40	34	-6	%
Total	25,605	25,935	330	1.3

Note: For footnotes see end of table.

**TABLE 7 - JOB SEEKERS RECEIVING NEWSTART ALLOWANCE AND YOUTH ALLOWANCE
(OTHER) BY AREA SUPPORT OFFICE AND CUSTOMER SERVICE CENTRE**

<i>Area Support Office and Customer Service Centre</i>	September 2008	October 2008	Variation	
			September - October Number	Per cent
WEST AUSTRALIA				
Albany	767	747	-20	-2.6
Armadale	705	683	-22	-3.1
Bunbury	1,271	1,273	2	0.2
Busselton	203	209	6	3.0
Cannington	1,002	1,039	37	3.7
Carnarvon	280	286	6	2.1
Cocos Islands	43	43	0	%
Collie	4	5	1	%
Community Team Perth	104	85	-19	%
Curtin on Campus SSC	8	10	2	%
Esperance	228	243	15	6.6
Fremantle	888	919	31	3.5
Fremantle SACC	1	1	0	%
Fremantle SSC	0	0	0	%
Geraldton	1,079	1,077	-2	-0.2
Gosnells	751	744	-7	-0.9
Innaloo	880	866	-14	-1.6
Joondalup	1,011	1,018	7	0.7
Joondalup SACC	2	2	0	%
Joondalup SSC	1	1	0	%
Kalgoorlie	557	579	22	3.9
Karratha	244	240	-4	-1.6
Laverton RASC	59	59	0	%
Mandurah	918	943	25	2.7
Meekatharra RASC	188	196	8	4.3
Midland	1,478	1,494	16	1.1
Mirrabooka	1,199	1,273	74	6.2
Morley	1,220	1,272	52	4.3
Morley - Dewar Street	1	1	0	%
Morley SSC	0	0	0	%
Newman RASC	187	186	-1	-0.5
Northam	401	429	28	7.0
Rockingham	1,116	1,115	-1	-0.1
South Hedland	403	391	-12	-3.0
Spearwood	626	632	6	1.0
Victoria Park	1,203	1,240	37	3.1
Warwick Grove	462	476	14	3.0
Other (a)	34	25	-9	%
Total	19,524	19,802	278	1.4

Note: For footnotes see end of table.

**TABLE 7 - JOB SEEKERS RECEIVING NEWSTART ALLOWANCE AND YOUTH ALLOWANCE
(OTHER) BY AREA SUPPORT OFFICE AND CUSTOMER SERVICE CENTRE**

<i>Area Support Office and Customer Service Centre</i>	September 2008	October 2008	Variation	
			September - October Number	Per cent
TASMANIA				
Bridgewater	594	596	2	0.3
Burnie	1,140	1,155	15	1.3
Devonport	1,310	1,319	9	0.7
Glenorchy	1,494	1,482	-12	-0.8
Hobart	1,121	1,109	-12	-1.1
Huonville	380	384	4	1.1
Launceston	2,710	2,705	-5	-0.2
Mowbray	7	9	2	%
Rosny Park	814	791	-23	-2.8
Sorell	400	401	1	0.3
Other (a)	57	50	-7	%
Total	10,027	10,001	-26	-0.3
NORTH AUSTRALIA				
Alice Springs	2,709	2,595	-114	-4.2
Borroloola RASC	41	37	-4	%
Broome	433	455	22	5.1
Casuarina	751	747	-4	-0.5
Derby	138	148	10	7.2
Fitzroy Crossing RASC	46	45	-1	%
Halls Creek RASC	201	198	-3	-1.5
Katherine	1,346	1,314	-32	-2.4
Knuckey Street	398	389	-9	-2.3
Kununurra	205	209	4	2.0
Maningrida	353	358	5	1.4
Nhulunbuy	715	699	-16	-2.2
Palmerston	641	668	27	4.2
Tangentyere	86	82	-4	%
Tennant Creek	181	181	0	0.0
Tennant Creek Remote	83	86	3	%
Tiwi Islands RASC	217	222	5	2.3
Top End Remote	730	733	3	0.4
Wadeye RASC	419	368	-51	-12.2
Yuendumu RASC	137	128	-9	-6.6
Other (a)	39	35	-4	%
Total	9,869	9,697	-172	-1.7

Note: For footnotes see end of table.

**TABLE 7 - JOB SEEKERS RECEIVING NEWSTART ALLOWANCE AND YOUTH ALLOWANCE
(OTHER) BY AREA SUPPORT OFFICE AND CUSTOMER SERVICE CENTRE**

<i>Area Support Office and Customer Service Centre</i>	September 2008	October 2008	Variation	
			September - October Number	Per cent
<i>PACIFIC CENTRAL</i>				
Ballina	830	843	13	1.6
Beaudesert	298	309	11	3.7
Biggera Waters	1,151	1,218	67	5.8
Bourke	467	458	-9	-1.9
Brunswick Heads	473	469	-4	-0.8
Byron Bay	470	450	-20	-4.3
Casino	498	504	6	1.2
Coffs Harbour	1,992	2,026	34	1.7
Grafton	1,328	1,320	-8	-0.6
Lightning Ridge	183	189	6	3.3
Lismore	1,383	1,394	11	0.8
Maclean	0	0	0	%
Moree	472	455	-17	-3.6
Murwillumbah	447	443	-4	-0.9
Narrabri	342	341	-1	-0.3
Nerang	1,142	1,162	20	1.8
Palm Beach	1,499	1,479	-20	-1.3
Robina SCR	5	4	-1	%
Southport	1,592	1,593	1	0.1
Tweed Heads	1,068	1,067	-1	-0.1
Walgett	252	272	20	7.9
Other (a)	38	43	5	%
Total	15,930	16,039	109	0.7
<i>OTHER</i>				
Centrelink Call Centres (b)	83	78	-5	%
Not coded to an area	7	5	-2	%
Rounding adjustment (c)	-61	1	62	%
AUSTRALIA	283,804	284,622	818	0.3

(a) Recipients not coded to a Customer Service Centre.

(b) Job seekers receiving NSA / YA (o) in Centrelink Call Centres which are not counted in the various Area Offices.

(c) Prior to the July 2007 publication, the rounding adjustment was included in the Fairfield CSC.

Notes:

- Where the Customer Service Centre has a population less than 100 in either of the reported months, the monthly percentage variation has been suppressed and replaced with the percentage symbol '%'. .

- Most of the figures in this publication are averages and have been rounded. As a result, discrepancies may occur between sums of component items and totals, and in the calculation of variations.

- From July 2007, new Area Support Office boundaries came into effect. A concordance between the new and old Area structures is provided in Table A in the July 2007 edition of this publication.

**TABLE 8 - JOB SEEKERS RECEIVING NEWSTART ALLOWANCE AND YOUTH ALLOWANCE (OTHER)
FORTNIGHTLY EARNINGS (%) AND SEX (a), FORTNIGHT ENDING 24 OCTOBER 2008**

<i>Fortnightly Earnings</i>	Short-term job seekers	Long-term job seekers	Total job seekers
MALES			
Did not earn an income	85.2	81.6	83.5
Earned an income	14.8	18.4	16.5
Amount earned			
\$0.01-\$62.00	0.6	0.8	0.7
\$62.01-\$142.00	2.1	2.4	2.2
\$142.01-\$236.00	2.4	3.0	2.7
\$236.01-\$316.00	1.9	2.2	2.0
Over \$316.00	7.8	10.1	8.9
Total	100.0	100.0	100.0
<i>Job seekers receiving NSA and YA (other)</i>	<i>93,058</i>	<i>80,627</i>	<i>173,685</i>
FEMALES			
Did not earn an income	75.6	70.1	72.6
Earned an income	24.4	29.9	27.4
Amount earned			
\$0.01-\$62.00	1.0	1.0	1.0
\$62.01-\$142.00	2.9	3.2	3.1
\$142.01-\$236.00	3.6	4.1	3.9
\$236.01-\$316.00	2.9	3.3	3.1
Over \$316.00	14.0	18.3	16.4
Total	100.0	100.0	100.0
<i>Job seekers receiving NSA and YA (other)</i>	<i>49,469</i>	<i>61,237</i>	<i>110,706</i>
PERSONS			
Did not earn an income	81.8	76.6	79.2
Earned an income	18.2	23.4	20.8
Amount earned			
\$0.01-\$62.00	0.7	0.9	0.8
\$62.01-\$142.00	2.4	2.7	2.6
\$142.01-\$236.00	2.9	3.5	3.2
\$236.01-\$316.00	2.2	2.7	2.5
Over \$316.00	10.0	13.6	11.8
Total	100.0	100.0	100.0
<i>Job seekers receiving NSA and YA (other)</i>	<i>142,527</i>	<i>141,864</i>	<i>284,391</i>

(a) Total figures in this table are different from Tables 2 to 7 because of different methodologies applied. Tables 2 to 7 are based on averages of weekly figures while this table is based on point in time data. See Explanatory Notes for further information.

EXPLANATORY NOTES

Introduction

This publication provides monthly statistical information on DEEWR labour market and related payments delivered by Centrelink. These Explanatory Notes provide details of the scope and methodology of the publication, as well as the policy changes which have affected the data since the publication was introduced in December 1995 by the then Department of Social Security.

Prior to December 1995, this publication was titled the *Monthly Job Search and Newstart Allowance Statistics*.

Scope

The primary focus of the publication is to provide information on unemployed people on Newstart Allowance and Youth Allowance, with a particular focus on the total number of job seekers. The number of people on Mature Age Allowance, Partner Allowance and Widow Allowance are also reported.

Methodology

Data in this publication relate to the average number of people who are both eligible (eg. meet 'unemployed' qualification) and entitled (eg. meet income and assets criteria) to receive a payment calculated over a reference month. Averages are calculated using figures collected for each Friday throughout the reference month.

Table 1 provides information on the total number of unemployed people on Newstart Allowance and Youth Allowance. The Youth Allowance population is split into Youth Allowance (full-time students), Youth Allowance (Australian Apprentices) and Youth Allowance (other) categories. Numbers of people on Mature Age Allowance, Partner Allowance and Widow Allowance are also provided.

Tables 2 and 3 provide a summary of the Newstart Allowance and Youth Allowance (other) populations and show the derivation of the respective job seeker populations (see the reference to job seekers in the Comparability of Data section of these Explanatory Notes). These populations are added together to derive the total number of job seekers. Tables 4 to 8 provide information on the total job seeker population.

The earnings data in Table 8 is derived using a different methodology from that of the other tables in the publication. Table 8 is based on the combined population of job seekers who are eligible for and entitled to receive Newstart Allowance or Youth Allowance (other) at the end of the second last week in the month. Thus, the data obtained from this table will not be directly comparable with those calculated using monthly averages in other tables.

Payment History

Youth Allowance

From 1 July 1998 Youth Allowance was introduced to provide income support to young people, including students, those looking for work, and those who are sick. Youth Allowees may be undertaking full-time study, full-time job search or a combination of approved activities. Some young people will be exempt from the activity test because of their personal circumstances, eg. illness, homelessness or major personal crisis. The Youth Allowance replaced:

- AUSTUDY for 16-24 year olds (and certain 15 year olds);
- Newstart Allowance for 16-20 year olds (and certain 15 year olds);
- Youth Training Allowance for 16-17 year olds (and certain 15 year olds);
- Sickness Allowance for 16-20 year olds (and certain 15 year olds); and
- More-than-minimum rate Family Payment for secondary students aged 16-18 not getting AUSTUDY.

Youth Allowance recipients are subject to the parental means test. Under previous arrangements, unemployed people aged 18 to 20 were not subject to the parental means test, unlike 18 to 20 year old students.

Special provisions applied for 18 to 20 year olds who were already on Newstart or Sickness Allowance at the date of announcement of Youth Allowance, and who remained on payment when Youth Allowance commenced on 1 July 1998. This group were able to remain on their existing payment and retain their existing benefits.

Youth Allowance had a significant downward effect on Newstart Allowance numbers from July 1998 and total job seeker numbers due to the parental means test.

Newstart Allowance

From 1 July 1998, Newstart Allowance for 16-20 year olds (and certain 15 year olds) was replaced by Youth Allowance. Young people aged 18 to 20 years old who were on Newstart or Sickness Allowance at the date of announcement of Youth Allowance and when Youth Allowance commenced on 1 July 1998, were able to remain on Newstart Allowance.

From 20 September 1996, Job Search Allowance and Newstart Allowance were combined into one payment - Newstart Allowance - which was payable to eligible recipients aged 18 years and over and to some people who were in receipt of Job Search Allowance and aged under 18 at 31 December 1994 (see Job Search Allowance).

Prior to 20 September 1996, Newstart Allowance was payable to eligible persons over 18 years who had been registered as unemployed with the Commonwealth Employment Service (CES) for 12 months or more.

<i>Job Search Allowance</i>	<p>From 20 September 1996, the payment was combined with Newstart Allowance to form one payment called Newstart Allowance. All Job Search Allowance recipients were transferred to Newstart Allowance.</p> <p>Prior to 20 September 1996, Job Search Allowance was payable to eligible persons who had been registered as unemployed with the CES for up to 12 months. It was also payable to eligible persons who were in receipt of Job Search Allowance and under 18 years of age at 31 December 1994. Persons aged 15 to 18 years who were not receiving Job Search Allowance prior to 1 January 1995 commenced on Youth Training Allowance.</p>
<i>Sickness Allowance</i>	<p>From 17 March 1996, persons in receipt of Newstart Allowance or Youth Training Allowance who became temporarily incapacitated no longer transferred to Sickness Allowance after 13 weeks. This change had the effect of increasing total Newstart Allowance/Youth Training Allowance figures but did not affect job seeker figures as those recipients who were incapacitated were excluded from the Newstart and Youth Training job seeker populations.</p> <p>Under current arrangements, these recipients remain on their existing payments but are exempt from the activity test for the duration of their medical certificates. People who become unemployed because of illness, and those who suffer a potential loss of income due to sickness, are paid Newstart Allowance because they are unemployed.</p> <p>Sickness Allowance for 16 to 20 year olds (and certain 15 year olds) was replaced by Youth Allowance, which was introduced on 1 July 1998 (see Youth Allowance).</p>
<i>Partner Allowance</i>	<p>From 20 September 2003, Partner Allowance was closed to new claimants. People on Partner Allowance before this date can remain on the allowance while they remain 'current', that is retain eligibility and entitlement for the allowance.</p> <p>From 1 July 1995 Partner Allowance has only been granted to persons who are dependent partners of pensioners and allowees and who were born before 1 July 1955, have no dependent children and have little or no recent workforce experience. Other dependent partners have to qualify for an income support payment in their own right, such as Newstart Allowance.</p> <p>Partner Allowance was introduced in September 1994, and was paid to partners of persons receiving Job Search Allowance, Newstart Allowance, Sickness Allowance or Special Benefit if certain eligibility criteria were satisfied.</p>
<i>Youth Training Allowance</i>	<p>Youth Training Allowance was replaced by Youth Allowance on 1 July 1998 (see Youth Allowance).</p> <p>From 1 January 1995, eligible persons aged under 18 years who were new entrants to the job search pool were paid Youth Training Allowance. (People who were in receipt of Job Search</p>

Allowance and aged under 18 years at 31 December 1994 continued to be paid Job Search Allowance. From 20 September 1996, those young persons still being paid Job Search Allowance were transferred to Newstart Allowance.)

Widow Allowance Widow Allowance, introduced on 1 January 1995, is payable to females aged 50 years or over who have become widowed, divorced or separated since turning 40 years (50 prior to 20 March 1997), if they meet a number of other criteria relating to current marital status and recent work experience. This has had a slight downwards effect on Newstart Allowance numbers from January 1995.

Mature Age Allowance From 20 September 2003, Mature Age Allowance was closed to new claimants. People on Mature Age Allowance before this date can remain on the allowance while they remain 'current', that is retain eligibility and entitlement for the allowance.

From 1 July 1996, the qualification conditions for Mature Age Allowance changed for new claimants. The requirement for 12 months prior receipt of income support was reduced to 9 months for people transferring from Newstart Allowance and removed entirely for people transferring from non-activity tested payments. The requirement to have been registered as unemployed for 9 months was replaced with a requirement to have no recent workforce experience. Reporting of these new claimants commenced from September 1996.

Mature Age Allowance was introduced on 24 March 1994, and was paid to long-term unemployed persons aged 60 years and over (but below Age Pension age) who had been receiving income support for 9 months or more and who were eligible for Newstart Allowance. The introduction of Mature Age Allowance had a downwards effect on Newstart Allowance numbers from April 1994 until September 2003.

Comparability of Data

There have been significant changes to the data presented in this publication due to a number of events. The main changes are:

- the method of counting recipients;
- the inclusion of some CDEP recipients in the total recipient numbers;
- the introduction of Youth Allowance in July 1998;
- the way 'job seeker' is defined; and
- the way duration is calculated.

People using this data to construct time series should note the following comments.

Definition of Recipient From July 2002, the Department of Family and Community Services (FaCS) introduced a new method to more accurately measure the number of people receiving labour market and related payments. For those receiving labour market and related payments, their eligibility and entitlement status is administered by a payment system called Newstart Common Platform System. Within this system recipients who are both eligible and entitled to receive a payment have a determination status of 'current'.

The new method therefore counts these 'current' recipients.

The old method of counting recipients was specified to include all paid recipients - those who received a payment within a given fortnight. As compiled, however, this count excluded, from mid 1998, recipients who received a 'one-off' payment. These can occur, for instance, when a normal payment is interrupted (eg. payment is cancelled and then restored within that pay period) and a portion of the normal payment is paid.

The time series in Tables 1 and 4 reflect the revised method, as does the remainder of the publication. Revised historical data for these time series from May 1998 to June 2002 can be found in the July 2002 publication.

From July 2003 FaCS introduced a more sustainable methodology for this revised recipient count. Due to limitations in available data sources in 2002, the revised recipient count had to be derived through a complicated process. This more sustainable methodology resulted in slight differences from the recipient numbers used in previous editions.

*Community Development
Employment Projects
(CDEP)* From 20 March 2000, eligible participants in CDEP started receiving CDEP participant supplement and other add-ons, such as rent assistance, as part of income support payments. This added a number of new recipients to those eligible for payments reported in this publication.

*Introduction of
Youth Allowance* The sum of the number of Newstart Allowees and Youth Training Allowees prior to July 1998 is broadly comparable with the sum of Newstart Allowees and Youth Allowees (other) after July 1998. There are two main problems in comparing these two series. The first is the exclusion of some 18 to 20 year old unemployed people due to the application of the Youth Allowance parental means test (see the Youth Allowance section under Payment History). The second is the inclusion of Sickness Allowees in the Youth Allowance (other) population.

There is greater comparability between total Newstart Allowance and Youth Training Allowance job seekers prior to July 1998 and total Newstart Allowance and Youth Allowance (other) job seekers after July 1998. This is because the Sickness Allowance group is excluded from the job seeker total. The problem, however, of the exclusion of some recipients through the application of the Youth Allowance parental means test still remains.

Job seekers Prior to July 1998, the job seeker category was defined by excluding all Newstart Allowees who did not receive a payment, recipients who were incapacitated, and those receiving a payment who were undertaking training. Some people who were not required to engage in job search were classified as job seekers, including people undertaking full-time voluntary work, people on jury duty and pregnant women around the time of the birth of their child.

From July 1998, the definition of job seekers has been placed on a sounder conceptual basis. It is now derived for Newstart Allowance and Youth Allowance (other) recipients by excluding all people who did not receive a payment due to their own and/or their partner's income, or where applicable, parental income, and all those known not to be required to search for work. People receiving Intensive Support Customised Assistance under Job Network arrangements are classified as job seekers although they may not always be undertaking job search. These people negotiate their activity agreement with their Job Network member.

The total number of job seekers (comparable to pre-July 1998 estimates) is calculated by adding together the number of job seekers in receipt of Newstart Allowance and Youth Allowance (other) - see the Explanatory Notes on Youth Allowance.

Duration

Following system changes in May 1998, duration has been defined according to the time a recipient spends on income support - short-term recipients are those who have been on income support for up to 12 months and long-term recipients are those who have been on income support for 12 months or more.

Prior to 1998, duration was defined according to the time a recipient was registered as unemployed - short-term recipients were people who were registered as unemployed for up to 12 months and long-term recipients were people who were registered for 12 months or more.

Closure of Mature Age and Partner Allowances

From 20 September 2003, Mature Age Allowance and Partner Allowance were closed to new claimants. People on these allowances before this date can remain on that allowance while they remain 'current', that is retain eligibility and entitlement for the allowance. The majority of people who would previously have claimed these payments will now claim Newstart Allowance.

Symbols

n.a. not available
.. not applicable

GLOSSARY

Activity test status	The activity that a Newstart Allowance or Youth Allowance (other) recipient has agreed to undertake in order to meet the activity test. To satisfy the activity test recipients must be actively seeking and willing to take up work or undertaking activities to improve their employment prospects.
Age	Age in years at time of data collection.
Area Support Office	A Centrelink office that supports a set of Customer Service Centres for a specified area. These are generally not confined to State boundaries.
Community Development Employment Projects (CDEP)	<p>The CDEP programme is administered by the Department of Families, Housing, Community Services and Indigenous Affairs (FaHCSIA) from December 2007 and was previously administered by the Department of Employment and Workplace Relations (DEWR). CDEP provides unemployed Indigenous people with activities designed to meet community needs and which develop participants' skills and improve their employability in order to assist them to move to employment outside the CDEP organisation. These activities can also lead to the development of business enterprises.</p> <p>The CDEP Participant Supplement (CPS) is payable to eligible CDEP participants. It can be paid fortnightly or as a 12 weekly payment.</p>
Customer Service Centre	A Customer Service Centre set within a particular region that provides FaHCSIA, DEEWR and other payments and related information and services to recipients. Customer Service Centres are managed by Area Support Offices.
Did not receive a payment	Persons who did not receive a payment due to their own income and/or that of their partner, or parents, where applicable. This group is often referred to as 'zero paid'.
Eligibility and payment status	Refer to the Methodology entry in the Explanatory Notes.
Fortnightly earnings	Amount of income earned, derived, or received by a person for the person's own use or benefit in the previous fortnight.
Incapacitated	A person on Newstart Allowance or Youth Allowance (other) who has an activity test status indicating they are temporarily ill or incapacitated. Refer to the entry for Sickness Allowance in the Explanatory Notes.
Job seekers	A person on Newstart Allowance or Youth Allowance (other) who would usually be engaged in jobsearch. See Explanatory Notes for definition and history.

Job Search Allowance (JSA)	Up to 20 September 1996, Job Search Allowance was payable to CES eligible persons who had been registered as unemployed with the CES for up to 12 months. From 20 September 1996, the payment was combined with Newstart Allowance to form one payment called Newstart Allowance. See Explanatory Notes for history.
Long-term recipients	Persons on Newstart Allowance or Youth Allowance who have been receiving income support for 12 months or more. Duration of long-term recipients can be reset to zero if they exited from payments for more than 13 weeks.
Mature Age Allowance (MAA)	From 20 September 2003, Mature Age Allowance was closed to new claimants. People on Mature Age Allowance before this date can remain on the allowance while they remain 'current', that is retain eligibility and entitlement for the allowance. Mature Age Allowance, a non-activity-tested payment, is payable to unemployed people aged 60 years and over (but below Age Pension age) with little or no recent workforce experience who meet certain requirements for previous receipt of income support. See Explanatory Notes for history.
Newstart Allowance (NSA)	Newstart Allowance is payable to eligible unemployed persons aged 21 years and over (but below Age Pension age) who satisfy the activity test. See Explanatory Notes for history.
Newstart Common Platform System (NCP)	The Newstart Common Platform System (NCP) was introduced in May 1998. The NCP administers all labour market and related payments. This includes primary payments such as Newstart Allowance, Youth Allowance, Mature Age Allowance, Widow Allowance and Partner Allowance. Other payments on the NCP include Special Benefit, Sickness Allowance, Exceptional Circumstances Relief, Farm Help and Austudy.
Partner Allowance (PA)	<p>From 20 September 2003, Partner Allowance was closed to new claimants. People on Partner Allowance before this date can remain on the allowance while they remain 'current', that is retain eligibility and entitlement for the allowance.</p> <p>Partner Allowance, a non-activity-tested payment, is payable to persons who are dependent partners of pensioners and allowees and who were born before 1 July 1955, have no dependent children and have little or no recent workforce experience. See Explanatory Notes for history.</p>
Short-term recipients	Persons on Newstart Allowance or Youth Allowance who have been receiving income support for less than 12 months. Duration of short-term recipients can be reset to zero if they exited from payments for more than 6 weeks.
States	States and Territories of Australia derived from the postcode of the recipient's residence as held on the Centrelink payment system.

Widow Allowance (WA)	<p>From 1 July 2005 Widow Allowance was closed to new claimants, unless the woman was born on or before 1 July 1955.</p> <p>Widow Allowance, a non-activity tested payment, is payable to females aged 50 years or over who have become widowed, divorced or separated since turning 40 years if they have little or no recent work experience and meet a number of other criteria relating to current marital status. See Explanatory Notes for history.</p>
Youth Training Allowance (YTA)	<p>From 1 January 1995 eligible persons aged under 18 years who were registered as unemployed with the CES were paid Youth Training Allowance. From 1 July 1998, Youth Training Allowance was replaced by Youth Allowance. See Explanatory Notes for history.</p>
Youth Allowance (YA)	<p>Youth Allowance is payable to eligible full-time students aged 16 to 25 years, and to eligible unemployed persons aged 16 to 20 years who satisfy the activity test. Note, there are certain exceptions for some 15 and 25 year olds. See Explanatory Notes for history.</p> <p>Youth Allowees may be undertaking full-time study, full-time job search or a combination of approved activities. Some young people will be exempt from the activity test because of their personal circumstances, eg. illness, homelessness or major personal crisis. See the Explanatory Notes for more information.</p>
Youth Allowance (other)	<p>Youth Allowance recipients who are not full-time students or full-time Australian Apprentices.</p>
Zero paid	<p>See 'Did not receive a payment'.</p>

APPENDIX

COMPARISONS BETWEEN DEEWR UNEMPLOYMENT LABOUR MARKET PAYMENT NUMBERS AND ABS LABOUR FORCE UNEMPLOYMENT STATISTICS

Official statistics	Official unemployment statistics are released by the Australian Bureau of Statistics (ABS). The ABS uses definitions recommended by the International Labour Office which have been accepted internationally as the most appropriate for the compilation of official statistics of unemployment.
ABS definition	The ABS unemployment statistics measure the number of persons who, for a particular reference period, did not undertake any paid work, were actively looking for work and were available to start work.
DEEWR Unemployment Labour Market Payment Statistics	The labour market payment statistics give the number of persons who are both eligible and entitled to receive Newstart Allowance or Youth Allowance (other). The criteria for receipt of these payments do not match those the ABS uses to determine whether a person is classed as unemployed or employed for statistical purposes.
Differences	Care should be taken when comparing the ABS labour force and DEEWR labour market payment data. There are a number of reasons why the two series cannot be directly compared.
<i>Duration</i>	<p>Both DEEWR and the ABS classify long-term duration as over 12 months, but use substantially different definitions of duration:</p> <p>DEEWR measures duration of income support. This includes not just time on unemployment benefits but time on any income support payment.</p> <p>The ABS measures length of time unemployed using their unemployment definition.</p> <p>DEEWR unemployed recipients can have breaks without payment for up to 25 weeks but still be classified as long-term income support recipients:</p> <ul style="list-style-type: none">• Recipients who do not receive a payment due to their earnings can have up to 12 weeks without a payment before they are automatically cancelled. This reduces disincentives to accept short-term work.• Long-term recipients can have another 13 weeks off payment after payment is cancelled and still keep their long-term status if they return to income support. This means they keep access to assistance such as the Employment Entry Payment and the higher payment rate for recipients over 60.

For the ABS statistics, any hours of work for a period as short as two weeks count as a break from unemployment and so are enough to reset a person's unemployment duration.

The difference between these two concepts, together with the fact that DEEWR recipients are able to have ongoing part-time work (see 'employment' below) mean that many unemployed recipients remain classified by DEEWR as long-term recipients when they would be classified as short-term unemployed under the ABS definition.

<i>Seasonal adjustment</i>	The ABS produces a seasonally adjusted series. The DEEWR labour market payment numbers data are not seasonally adjusted.
<i>Classification</i>	<p>The ABS classifies a person as unemployed if he or she is aged 15 years and over, was not employed during the week before the interview, has actively looked for full-time or part-time work and is available to start work. From February 2004, people who had not actively looked for work because they were waiting to start a job within four weeks are also classified as unemployed.</p> <p>The Newstart Allowance and Youth Allowance (other) series generally count people who are eligible for and entitled to receive a payment between the ages of 15 years and 64 years in the case of men and 15 to 63 years in the case of women.</p>
<i>Employment</i>	Newstart Allowance and Youth Allowance (other) recipients may be employed part-time, but within an income test limit; the ABS classifies a person as "employed" if, among other things, he or she has worked for one hour or more during the survey period.
<i>Timing</i>	<p>The timing of collections of the series are different:</p> <ul style="list-style-type: none">• DEEWR reports monthly average numbers of people both eligible for and entitled to receive Newstart Allowance and Youth Allowance (other). These monthly averages are calculated using figures collected for each Friday throughout the reference month.• ABS numbers are based on a sample survey which interviews occupants of selected dwellings covering around 0.27% of the total Australian population. These persons are generally interviewed during the two weeks beginning the Monday between the 6th and 12th of each month and the information obtained relates to the week before the interview takes place.
<i>Treatment of partners</i>	The ABS series includes unemployed persons whose spouse is working, irrespective of income, whereas Newstart Allowance and Youth Allowance (other) recipients are subject to an income and assets test for themselves and their spouse.
<i>Pensioners</i>	The ABS series includes persons being paid a pension but looking for work (eg. sole parents in receipt of Parenting Payments looking for work).

<i>Non job seekers</i>	The overall Newstart Allowance and Youth Allowance (other) series includes persons who are not required to undertake jobsearch. These persons are separately identified in Tables 2 and 3, and have then been excluded in subsequent tables. These people may be undertaking training, the development of self-employment opportunities, full-time voluntary work or a combination of voluntary and part-time work which excludes them from jobsearch obligations. They may also be incapacitated or have another temporary exemption from jobsearch.
<i>Waiting periods</i>	The ABS series includes persons who are serving a waiting period before being granted Newstart Allowance or Youth Allowance (other), or whose allowance was deferred.
<i>Survey</i>	The ABS figures are derived from a Labour Force Survey which is a sample survey, whereas the DEEWR statistics are a complete count of those both eligible for and entitled to receive Newstart Allowance and Youth Allowance (other).

FOR MORE INFORMATION

Labour market information

Other statistics on recipients of labour market related payments are available on request.

In addition to Newstart and Youth Allowances, statistics are also available on Partner Allowance, Mature Age Allowance and Widow Allowance.

For publication distribution enquiries email:
MI.WORKINGAGE.PAYMENTS@centrelink.gov.au

Written correspondence concerning this publication or statistics on labour market related payments should be addressed to:

Director
Income Support Information Section
Working Age Payment Programs Branch
Income Support and Stakeholder Group
Department of Education, Employment and Workplace Relations
PO Box 9879
Canberra Mail Centre ACT 2601

or forwarded via facsimile to (02) 6275 3328.

Other recipient information

Statistics relating to other recipients are also available, including recipient numbers and characteristics for the various FaHCSIA pensions, benefits and family payments.

Other statistical outputs

The following statistical outputs are available on request:

Department of Families, Housing, Community Services and Indigenous Affairs (FaHCSIA)
Income Support Customers: a Statistical Overview
1996, 1997, 1998, 1999, 2000, 2001, 2002, 2003 and 2004.