

LABOUR MARKET AND RELATED PAYMENTS

a monthly profile

Note: The Australian Bureau of Statistics (ABS) produces the official unemployment statistics. The figures contained in this publication are different from the ABS unemployment figures as the ABS and the Department of Employment and Workplace Relations (DEWR) use different definitions to identify the unemployed and different methods of counting (see the Appendix for more information).

This publication was produced previously by the Department of Families, Community Services and Indigenous Affairs (FaCSIA) and since October 2004 by DEWR.

This publication can be found at <http://www.workplace.gov.au/lmrp>

July 2007

Embargoed
Until 11.30 am, 22 August 2007

Annual Subscription - \$65.00

CONTENTS

	<i>Page</i>
Introduction	1
Statistical Highlights	2
Tables	
1. Labour Market Payments - Time Series	3
2. Newstart Allowees - Derivation of the job seeker population	4
3. Youth Allowees (other) - Derivation of the job seeker population	5
4. Job seekers receiving Newstart Allowance and Youth Allowance (other) - Time Series	6
5. Job seekers receiving Newstart Allowance and Youth Allowance (other) by State	7
6. Job seekers receiving Newstart Allowance and Youth Allowance (other) by Age and Sex	8
7. Job seekers receiving Newstart Allowance and Youth Allowance (other) by Area Support Office and Customer Service Centre	9
8. Job seekers receiving Newstart Allowance and Youth Allowance (other) by Fortnightly Earnings and Sex	23
A. Concordance between pre and post <i>1 July 2007</i> Area Support Offices and Customer Service Centres	24
Explanatory Notes	38
Glossary	44
Appendix	47
For More Information	50

INTRODUCTION

This publication presents statistical information on a monthly basis for the various types of labour market payments delivered by Centrelink largely on behalf of the Department of Employment and Workplace Relations (DEWR).

After the Machinery of Government (MOG) changes, announced in October 2004, responsibility for Newstart Allowance (NSA), Youth Allowance (other) (YA(o)), Mature Age Allowance (MAA), Partner Allowance (PA) and Widow Allowance (WA) was transferred to DEWR and responsibility for Youth Allowance (full-time students) (YA(FTS)) was transferred to the Department of Education, Science and Training (DEST).

This publication covers NSA and YA(o) in some detail and, to a lesser extent, MAA, PA, WA, YA(FTS) and YA (Australian Apprentices).

Table 1 provides information on the total number of NSA and YA recipients. The YA population is broken down into YA(o), YA(FTS) and YA(Australian Apprentices) categories. The total numbers of MAA, PA and WA recipients are also provided in this table.

Tables 2 and 3 show the derivation of the NSA and YA(o) job seeker populations (see the reference to job seekers in the 'Comparability of data' section of the *Explanatory Notes*). These populations are added together to derive the total number of job seekers.

Tables 4 to 8 provide information on the total job seeker population.

When using time series figures, it is important to note that changes have occurred over time to the conditions of eligibility for different payments. Details of these changes are provided in the *Explanatory Notes*.

PLEASE NOTE: With the release of this publication edition, Table 7 has incorporated new Area Support Office boundaries which came into effect from 1 July 2007. The re-alignment of Area boundaries provides better structures and support for Area people; establishes optimal spans of control for Centrelink Area Managers; provides for expected significant population growth in southern Queensland and northern New South Wales; and aligns Area footprints with DEWR Employment Service Areas (ESAs). A concordance between new and old Area structures is provided in Table A.

All media inquiries should be directed to the Centrelink National Media Officer on (02) 6284 6442. For more general inquiries regarding further statistical information please refer to the last page of this publication for other contact details.

The next issue of this publication is scheduled for release on 19 September 2007.

STATISTICAL HIGHLIGHTS – July 2007

Between July 2006 and July 2007:

Total Newstart Allowance (NSA) recipients and Youth Allowance (other) (YA(o)) recipients **decreased by 6.2%** overall from 550,650 to 516,450 and

- ◆ decreased 5.4% for NSA from 474,477 to 448,833 and
- ◆ decreased 11.2% for YA(o) from 76,173 to 67,617.

The number of job seekers **decreased by 13.6%** overall from 379,179 to 327,510 and

- ◆ decreased 13.9% for NSA recipients from 318,843 to 274,616 and
- ◆ decreased 12.3% for YA(o) recipients from 60,336 to 52,894.

Long-term job seekers decreased by 16.3% from 213,281 to 178,467.

Short-term job seekers decreased by 10.2% from 165,898 to 149,043.

For comparisons between DEWR unemployment labour market payment numbers and ABS labour force unemployment statistics, see Appendix.

**Newstart Allowance and Youth Allowance (other)
July 2005 to July 2007**

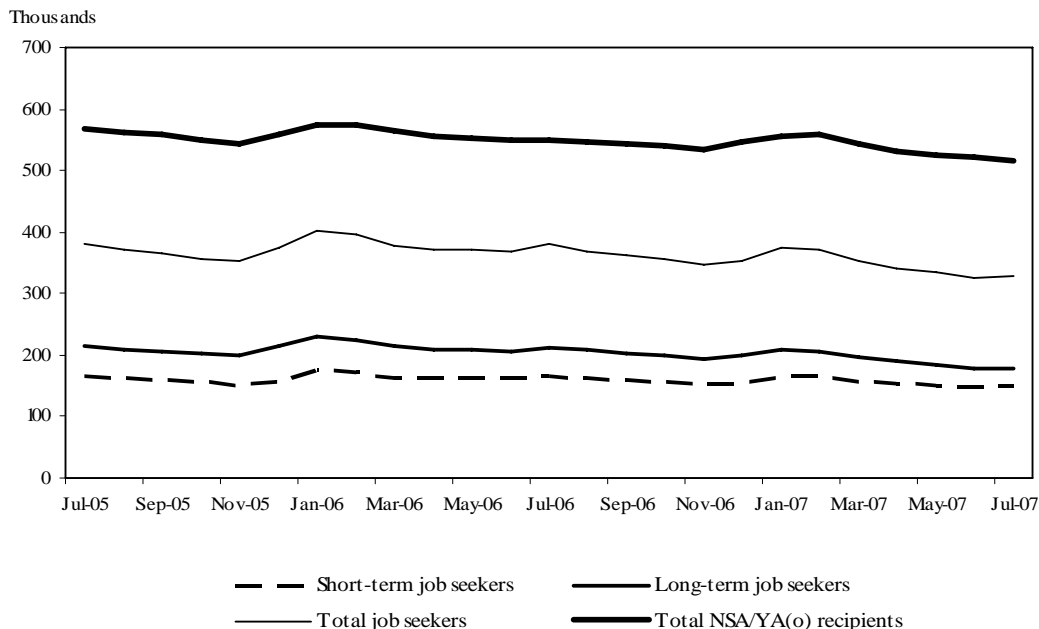


TABLE 1 - LABOUR MARKET PAYMENTS - TIME SERIES (a)

	Newstart Allowance		Youth Allowance			Mature Age Allowance	Partner Allowance	Widow Allowance
	Long-term (b)	Total	Other	Full-time Students (c)	Australian Apprentices (d)			
February 1994 (e)	472,785	977,796
July 2005	291,683	487,653	79,816	279,040	742	20,258	71,140	44,841
August 2005	291,607	485,823	77,459	285,864	1,655	19,462	70,365	45,009
September 2005	289,974	482,072	76,272	288,479	2,285	18,697	69,624	45,158
October 2005	287,468	475,490	72,915	280,308	2,416	17,939	68,919	45,287
November 2005	286,345	470,557	73,576	274,547	2,471	17,335	68,420	45,538
December 2005	290,391	476,028	84,022	233,273	2,486	16,623	67,762	45,830
January 2006	294,100	487,251	85,628	223,059	2,478	15,869	66,905	45,849
February 2006	294,250	491,955	83,559	232,189	2,731	15,111	65,681	45,760
March 2006	291,020	484,784	78,913	250,079	2,994	14,271	64,282	45,622
April 2006	288,017	479,378	76,747	260,349	3,190	13,547	62,924	45,438
May 2006	285,853	475,830	75,533	266,392	3,181	12,836	61,863	45,212
June 2006	284,288	474,125	75,366	270,081	3,323	12,110	60,829	45,096
July 2006	285,152	474,477	76,173	264,863	3,376	11,379	59,401	44,639
August 2006	284,943	472,448	72,634	271,591	3,472	10,731	58,213	44,184
September 2006	285,218	472,222	71,104	276,235	3,643	10,049	56,965	43,705
October 2006	284,276	470,340	69,511	277,061	3,740	9,430	55,683	43,349
November 2006	282,694	466,631	68,721	267,042	3,683	8,892	54,611	43,112
December 2006	284,499	469,233	76,480	226,902	3,571	8,293	53,398	42,903
January 2007	286,614	478,033	77,358	216,869	3,487	7,745	52,205	42,530
February 2007	286,113	481,343	76,036	223,780	3,715	7,287	51,251	42,370
March 2007	281,937	473,278	71,619	239,502	4,087	6,751	50,058	42,032
April 2007	277,688	463,732	68,746	250,660	4,250	6,235	48,912	41,619
May 2007	274,568	458,297	67,973	256,805	4,341	5,790	47,896	41,245
June 2007	271,439	452,733	67,852	261,197	4,435	5,284	46,709	40,886
July 2007	269,816	448,833	67,617	256,808	4,416	4,796	45,917	40,735
<i>Variation June 2007 - July 2007</i>								
Number	-1,623	-3,900	-235	-4,389	-19	-488	-792	-151
Per cent	-0.6	-0.9	-0.3	-1.7	-0.4	-9.2	-1.7	-0.4

(a) This table presents data using the revised method of measuring the number of people receiving labour market payments introduced in July 2002. Revised historical data from May 1998 to June 2002 is in Table A (May 1998 - June 2000) and Table 1 (July 2000 - July 2002) of July 2002 publication.

(b) Long-term Newstart allowees are persons who have been receiving income support for 12 months or more.

(c) The number of full time students does not include those who have traded in their entire Youth Allowance entitlement for a loan under the Student Financial Supplement Loan Scheme. The Government announced on 24 April 2003 that no further loans would be issued under this Scheme from 1 January 2004. For further details, refer to the Explanatory Notes at the back of this publication.

(d) Australian Apprenticeships combine employment with structured training to provide a nationally recognised qualification. Australian Apprentices enter formal agreements known as either 'Training Agreements' or 'Contracts of Training' which set out the relationship between the employer and the Australian Apprentice and their respective rights and responsibilities.

(e) February 1994 data has been included for comparison purposes due to the peak in the number of persons receiving JSA/NSA at this point in time.

Notes:

- Most of the figures in this publication are monthly averages of weekly data and have been rounded. As a result, discrepancies may occur between sums of component items and totals, and in the calculation of variations.

TABLE 2 - NEWSTART ALLOWEES - DERIVATION OF THE JOB SEEKER POPULATION

	June 2007	July			Variation June - July	
		Males	Females	Persons	Number	Per cent
Short-term NSA Customers	181,294	115,964	63,053	179,017	-2,277	-1.3
CPS recipients (a)	3,983	2,220	878	3,098	-885	-22.2
Did not receive a payment (b)	10,284	5,627	4,184	9,811	-473	-4.6
Received a payment	167,027	108,117	57,991	166,108	-919	-0.6
Incapacitated (c)	17,530	10,297	6,818	17,115	-415	-2.4
Training	10,681	6,459	3,964	10,423	-258	-2.4
Exempt - seeking self-employment opportunities	533	282	174	456	-77	-14.4
Voluntary/part-time work (d)	3,101	1,399	1,866	3,265	164	5.3
Other/temporary exemptions (e)	12,743	7,276	5,076	12,352	-391	-3.1
Short-term NSA job seekers (f)	122,439	82,404	40,093	122,497	58	0.0
Long-term NSA Customers	271,439	165,010	104,806	269,816	-1,623	-0.6
CPS recipients (a)	8,601	5,183	2,460	7,643	-958	-11.1
Did not receive a payment (b)	9,374	4,846	4,009	8,855	-519	-5.5
Received a payment	253,464	154,981	98,337	253,318	-146	-0.1
Incapacitated (c)	20,447	11,304	8,790	20,094	-353	-1.7
Training	47,607	29,813	17,690	47,503	-104	-0.2
Exempt - seeking self-employment opportunities	271	136	89	225	-46	-17.0
Voluntary/part-time work (d)	9,867	5,851	4,232	10,083	216	2.2
Other/temporary exemptions (e)	23,560	14,098	9,196	23,294	-266	-1.1
Long-term NSA job seekers (f)	151,712	93,779	58,340	152,119	407	0.3
All NSA Customers (g)	452,733	280,974	167,859	448,833	-3,900	-0.9
CPS recipients (a)	12,584	7,403	3,338	10,741	-1,843	-14.6
Did not receive a payment (b)	19,658	10,473	8,193	18,666	-992	-5.0
Received a payment	420,491	263,098	156,328	419,426	-1,065	-0.3
Incapacitated (c)	37,977	21,601	15,608	37,209	-768	-2.0
Training	58,288	36,272	21,654	57,926	-362	-0.6
Exempt - seeking self-employment opportunities	804	418	263	681	-123	-15.3
Voluntary/part-time work (d)	12,968	7,250	6,098	13,348	380	2.9
Other/temporary exemptions (e)	36,303	21,374	14,272	35,646	-657	-1.8
All NSA job seekers (f)	274,151	176,183	98,433	274,616	465	0.2

(a) Persons with NSA eligibility who received CDEP Participant Supplement or add ons while participating in CDEP Projects.

(b) Persons who did not receive a payment due to their income and/or that of their partner. This group is often referred to as zero-paid.

(c) Activity code "incapacitated" relates to NSA recipients who have become temporarily ill or incapacitated.

(d) Those customers undertaking approved full-time voluntary work or combinations of voluntary and part-time work who are not required to seek work.

(e) Includes other customers known not to have job search obligations. See 'Job seekers' in Explanatory Notes.

(f) Those customers who received a payment and generally are required to search for work. These customers form the basis of the population group in Tables 4 - 7.

(g) On 1 July 2006, the Australian Government introduced the Welfare to Work reforms. These reforms impact on the NSA population.

Notes:

- For information on short-term and long-term categories please refer to the Glossary.

- Most of the figures in this publication are monthly averages of weekly data and have been rounded. As a result, discrepancies may occur between sums of component items and totals, and in the calculation of variations.

TABLE 3 - YOUTH ALLOWEES (OTHER) - DERIVATION OF THE JOB SEEKER POPULATION

	June 2007	July			Variation June - July	
		Males	Females	Persons	Number	Per cent
Short-term YA (other) Customers	33,703	17,837	15,655	33,492	-211	-0.6
CPS recipients (a)	1,989	914	560	1,474	-515	-25.9
Did not receive a payment (b)	698	333	351	684	-14	-2.0
Received a payment	31,016	16,590	14,744	31,334	318	1.0
Part-time study & work (c)	2	0	1	1	-1	-50.0
Part-time study & other YA activities (d)	66	29	43	72	6	9.1
Incapacitated (e)	1,751	817	888	1,705	-46	-2.6
Training	1,266	750	496	1,246	-20	-1.6
Exempt - seeking self-employment opportunities	8	4	4	8	0	0.0
Full-time voluntary work	0	0	0	0	0	0.0
Other non-jobseekers (e)	1,760	753	1,003	1,756	-4	-0.2
Short-term YA (other) job seekers (f)	26,163	14,237	12,309	26,546	383	1.5
Long-term YA (other) Customers	34,149	16,071	18,054	34,125	-24	-0.1
CPS recipients (a)	1,492	777	453	1,230	-262	-17.6
Did not receive a payment (b)	1,041	401	542	943	-98	-9.4
Received a payment	31,616	14,893	17,059	31,952	336	1.1
Part-time study & work (c)	1	0	2	2	1	100.0
Part-time study & other YA activities (d)	66	19	37	56	-10	-15.2
Incapacitated (e)	1,408	489	851	1,340	-68	-4.8
Training	2,832	1,451	1,296	2,747	-85	-3.0
Exempt - seeking self-employment opportunities	11	2	5	7	-4	-36.4
Full-time voluntary work	0	0	0	0	0	0.0
Other non-jobseekers (e)	1,448	582	870	1,452	4	0.3
Long-term YA (other) job seekers (f)	25,850	12,350	13,998	26,348	498	1.9
All YA (other) Customers (g)	67,852	33,908	33,709	67,617	-235	-0.3
CPS recipients (a)	3,481	1,691	1,013	2,704	-777	-22.3
Did not receive a payment (b)	1,739	734	893	1,627	-112	-6.4
Received a payment	62,632	31,483	31,803	63,286	654	1.0
Part-time study & work (c)	3	0	3	3	0	0.0
Part-time study & other YA activities (d)	132	48	80	128	-4	-3.0
Incapacitated (e)	3,159	1,306	1,739	3,045	-114	-3.6
Training	4,098	2,201	1,792	3,993	-105	-2.6
Exempt - seeking self-employment opportunities	19	6	9	15	-4	-21.1
Full-time voluntary work	0	0	0	0	0	0.0
Other non-jobseekers (e)	3,208	1,335	1,873	3,208	0	0.0
All YA (other) job seekers (f)	52,013	26,587	26,307	52,894	881	1.7

(a) Persons with YA eligibility who received CDEP Participant Supplement or add ons while participating in CDEP projects.

(b) Persons who did not receive a payment due to their own income and/or that of their partner or parents, where applicable. This group is often referred to as zero-paid.

(c) Those customers undertaking approved part-time study and work who are considered to have a full activity load and are not required to seek work.

(d) Those customers undertaking approved part-time study and other activities who are considered to have a full activity load and are not required to seek work.

(e) These categories are defined in the same way as in Table 2, except that those customers combining these activities with part-time study are classified under part-time study and other activities.

(f) Those customers who received a payment and generally are required to search for work. These customers form the basis of the population group in Tables 4 - 7.

(g) On 1 July 2006, the Australian Government introduced the Welfare to Work reforms. These reforms impact on the YA(o) population.

Notes:

- For information on short-term and long-term categories please refer to the Glossary.

- Most of the figures in this publication are monthly averages of weekly data and have been rounded. As a result, discrepancies may occur between sums of component items and totals, and in the calculation of variations.

TABLE 4 - JOB SEEKERS RECEIVING NEWSTART ALLOWANCE AND YOUTH ALLOWANCE (OTHER)
TIME SERIES (a)

	Short-term	Long-term	Total
July 2005	167,154	213,585	380,739
August 2005	162,525	209,424	371,949
September 2005	159,378	205,254	364,632
October 2005	155,525	201,678	357,203
November 2005	151,863	200,077	351,940
December 2005	157,829	215,881	373,710
January 2006	173,502	229,230	402,732
February 2006	173,305	224,048	397,353
March 2006	164,016	214,293	378,309
April 2006	161,900	209,435	371,335
May 2006	162,182	207,935	370,117
June 2006	162,331	205,212	367,543
July 2006	165,898	213,281	379,179
August 2006	161,929	207,905	369,834
September 2006	159,462	203,024	362,486
October 2006	156,815	198,967	355,782
November 2006	152,125	193,719	345,844
December 2006	153,342	201,044	354,386
January 2007	165,924	209,395	375,319
February 2007	165,581	205,384	370,965
March 2007	157,827	195,351	353,178
April 2007	153,350	188,871	342,221
May 2007	151,083	183,234	334,317
June 2007	148,602	177,562	326,164
July 2007	149,043	178,467	327,510
<i>Variation June 2007 - July 2007</i>			
Number	441	905	1,346
Per cent	0.3	0.5	0.4

(a) This table presents data using the revised method of measuring the number of people receiving labour market payment introduced in July 2002. Revised historical data from May 1998 to June 2002 is in Table B of July 2002 publication.

Notes:

- For information on short-term and long-term categories please refer to the Glossary.

- Most of the figures in this publication are monthly averages of weekly data and have been rounded. As a result, discrepancies may occur between sums of component items and totals, and in the calculation of variations.

**TABLE 5 - JOB SEEKERS RECEIVING NEWSTART ALLOWANCE AND YOUTH ALLOWANCE (OTHER)
BY STATE**

<i>State</i>	June 2007	July 2007	Variation	
			Number	Per cent
SHORT-TERM JOB SEEKERS				
New South Wales	53,469	53,632	163	0.3
Victoria	35,753	35,536	-217	-0.6
Queensland	29,452	29,429	-23	-0.1
South Australia	12,636	12,729	93	0.7
Western Australia	10,179	10,644	465	4.6
Tasmania	4,321	4,305	-16	-0.4
Northern Territory	1,737	1,689	-48	-2.8
Australian Capital Territory	1,055	1,079	24	2.3
AUSTRALIA	148,602	149,043	441	0.3
LONG-TERM JOB SEEKERS				
New South Wales	66,144	66,534	390	0.6
Victoria	45,275	45,418	143	0.3
Queensland	27,312	27,368	56	0.2
South Australia	16,465	16,493	28	0.2
Western Australia	10,136	10,424	288	2.8
Tasmania	7,792	7,755	-37	-0.5
Northern Territory	3,124	3,138	14	0.4
Australian Capital Territory	1,314	1,337	23	1.8
AUSTRALIA	177,562	178,467	905	0.5
TOTAL JOB SEEKERS				
New South Wales	119,613	120,166	553	0.5
Victoria	81,028	80,954	-74	-0.1
Queensland	56,764	56,797	33	0.1
South Australia	29,101	29,222	121	0.4
Western Australia	20,315	21,068	753	3.7
Tasmania	12,113	12,060	-53	-0.4
Northern Territory	4,861	4,827	-34	-0.7
Australian Capital Territory	2,369	2,416	47	2.0
AUSTRALIA	326,164	327,510	1,346	0.4

Notes:

- Most of the figures in this publication are monthly averages of weekly data and have been rounded. As a result, discrepancies may occur between sums of component items and totals, and in the calculation of variations.

**TABLE 6 - JOB SEEKERS RECEIVING NEWSTART ALLOWANCE AND YOUTH ALLOWANCE (OTHER)
BY AGE AND SEX, AS AT JULY 2007**

Age	Short-term job seekers		Long-term job seekers		Total job seekers	
	Number	Per cent	Number	Per cent	Number	Per cent
MALES						
Less than 18 years	4,489	4.6	2,242	2.1	6,731	3.3
18 - 20 years	9,744	10.1	10,105	9.5	19,849	9.8
21 - 24 years	16,210	16.8	12,507	11.8	28,717	14.2
25 - 29 years	15,221	15.7	12,834	12.1	28,055	13.8
30 - 39 years	22,965	23.8	22,523	21.2	45,488	22.4
40 - 49 years	14,858	15.4	19,116	18.0	33,974	16.8
50 - 59 years	9,460	9.8	17,270	16.3	26,730	13.2
60 years and over	3,695	3.8	9,534	9.0	13,229	6.5
Total	96,642	100.0	106,131	100.0	202,773	100.0
FEMALES						
Less than 18 years	4,742	9.0	2,921	4.0	7,663	6.1
18 - 20 years	7,565	14.4	11,073	15.3	18,638	14.9
21 - 24 years	8,501	16.2	8,973	12.4	17,474	14.0
25 - 29 years	5,335	10.2	5,968	8.3	11,303	9.1
30 - 39 years	8,169	15.6	10,217	14.1	18,386	14.7
40 - 49 years	9,228	17.6	14,854	20.5	24,082	19.3
50 - 59 years	7,076	13.5	14,320	19.8	21,396	17.2
60 years and over	1,785	3.4	4,010	5.5	5,795	4.6
Total	52,401	100.0	72,336	100.0	124,737	100.0
PERSONS						
Less than 18 years	9,231	6.2	5,163	2.9	14,394	4.4
18 - 20 years	17,309	11.6	21,178	11.9	38,487	11.8
21 - 24 years	24,711	16.6	21,480	12.0	46,191	14.1
25 - 29 years	20,556	13.8	18,802	10.5	39,358	12.0
30 - 39 years	31,134	20.9	32,740	18.3	63,874	19.5
40 - 49 years	24,086	16.2	33,970	19.0	58,056	17.7
50 - 59 years	16,536	11.1	31,590	17.7	48,126	14.7
60 years and over	5,480	3.7	13,544	7.6	19,024	5.8
Total	149,043	100.0	178,467	100.0	327,510	100.0

**TABLE 7 - JOB SEEKERS RECEIVING NEWSTART ALLOWANCE AND YOUTH ALLOWANCE
(OTHER) BY AREA SUPPORT OFFICE AND CUSTOMER SERVICE CENTRE**

<i>Area Support Office and Customer Service Centre</i>	June 2007	July 2007	Variation June - July	
			Number	Per cent
<i>SYDNEY EAST NEW SOUTH WALES</i>				
Bankstown	3,606	3,625	19	0.5
Bondi Junction	1,056	1,029	-27	-2.6
Burwood	1,462	1,421	-41	-2.8
Campsie	2,382	2,368	-14	-0.6
Caringbah	1,177	1,028	-149	-12.7
Chatswood	907	860	-47	-5.2
Corrimal	1,162	1,163	1	0.1
Dapto	1,088	1,092	4	0.4
Darlinghurst	1,434	1,401	-33	-2.3
Darlinghurst CCU	41	33	-8	%
Haymarket	3	3	0	%
Hornsby	790	778	-12	-1.5
Hurstville	1,263	1,249	-14	-1.1
Lakemba	47	48	1	%
Leichhardt	1,295	1,262	-33	-2.5
Maroubra	1,244	1,224	-20	-1.6
Marrickville	1,334	1,325	-9	-0.7
Northern Beaches	910	911	1	0.1
Participation Sydney East	8	10	2	%
Redfern	1,225	1,190	-35	-2.9
Revesby	4	4	0	%
Rockdale	1,300	1,273	-27	-2.1
Ryde	846	834	-12	-1.4
Shellharbour	1,424	1,422	-2	-0.1
Sutherland	286	400	114	39.9
Wollongong	1,430	1,425	-5	-0.3
Other (a)	17	18	1	%
Total	27,741	27,396	-345	-1.2

Note: For footnotes see end of table.

**TABLE 7 - JOB SEEKERS RECEIVING NEWSTART ALLOWANCE AND YOUTH ALLOWANCE
(OTHER) BY AREA SUPPORT OFFICE AND CUSTOMER SERVICE CENTRE**

<i>Area Support Office and Customer Service Centre</i>	June 2007	July 2007	Variation June - July	
			Number	Per cent
<i>SYDNEY WEST NEW SOUTH WALES</i>				
Auburn	2,099	2,047	-52	-2.5
Baulkham Hills	588	581	-7	-1.2
Blacktown	2,838	2,750	-88	-3.1
Cabramatta	1,893	1,877	-16	-0.8
Camden	593	610	17	2.9
Campbelltown	2,379	2,341	-38	-1.6
Fairfield	3,260	3,179	-81	-2.5
Hawkesbury	841	849	8	1.0
Ingleburn	1,233	1,271	38	3.1
Katoomba	616	619	3	0.5
Liverpool	3,551	3,524	-27	-0.8
Merrylands	1,671	1,694	23	1.4
Mt Druitt	2,549	2,605	56	2.2
Parramatta	1,625	1,644	19	1.2
Penrith	1,654	1,695	41	2.5
Springwood	379	379	0	0.0
St Marys	1,651	1,630	-21	-1.3
Other (a)	37	35	-2	%
Total	29,457	29,330	-127	-0.4

Note: For footnotes see end of table.

**TABLE 7 - JOB SEEKERS RECEIVING NEWSTART ALLOWANCE AND YOUTH ALLOWANCE
(OTHER) BY AREA SUPPORT OFFICE AND CUSTOMER SERVICE CENTRE**

<i>Area Support Office and Customer Service Centre</i>	June 2007	July 2007	Variation June - July	
			Number	Per cent
HUNTER NEW SOUTH WALES				
Armidale	1,132	1,245	113	10.0
Cessnock	882	880	-2	-0.2
Charlestown	1,923	1,953	30	1.6
Ettalong	908	911	3	0.3
Glen Innes	0	0	0	%
Gosford	1,574	1,519	-55	-3.5
Gunnedah	452	447	-5	-1.1
Inverell	691	713	22	3.2
Kempsey	1,190	1,188	-2	-0.2
Kurri Kurri	555	534	-21	-3.8
Lakehaven	1,561	1,599	38	2.4
Maitland	1,646	1,652	6	0.4
Mayfield	1,124	1,156	32	2.8
Muswellbrook	544	558	14	2.6
Nambucca Heads	982	1,034	52	5.3
Nelson Bay	573	584	11	1.9
Newcastle	1,392	1,405	13	0.9
Port Macquarie	1,744	1,768	24	1.4
Raymond Terrace	956	998	42	4.4
Singleton	305	300	-5	-1.6
Tamworth	1,677	1,716	39	2.3
Taree	1,776	1,779	3	0.2
The Entrance	1,370	1,373	3	0.2
Toronto	1,026	1,037	11	1.1
Tuncurry (Forster)	871	918	47	5.4
Wallsend	1,564	1,634	70	4.5
Wyong	653	687	34	5.2
Other (a)	20	18	-2	%
Total	29,091	29,606	515	1.8

Note: For footnotes see end of table.

**TABLE 7 - JOB SEEKERS RECEIVING NEWSTART ALLOWANCE AND YOUTH ALLOWANCE
(OTHER) BY AREA SUPPORT OFFICE AND CUSTOMER SERVICE CENTRE**

<i>Area Support Office and Customer Service Centre</i>	June 2007	July 2007	Variation June - July	
			Number	Per cent
<i>SOUTH WEST NEW SOUTH WALES</i>				
Batemans Bay	946	961	15	1.6
Bathurst	955	980	25	2.6
Bega	749	763	14	1.9
Belconnen	712	728	16	2.2
Bowral	518	553	35	6.8
Braddon	685	687	2	0.3
Cooma	309	328	19	6.1
Cowra	497	499	2	0.4
Dubbo	1,887	1,908	21	1.1
Goulburn	786	800	14	1.8
Griffith	595	576	-19	-3.2
Gungahlin	65	67	2	%
Lanyon	31	34	3	%
Leeton	332	349	17	5.1
Lithgow	681	685	4	0.6
Mudgee	714	684	-30	-4.2
Narooma	401	409	8	2.0
Nowra	2,115	2,126	11	0.5
Orange	1,066	1,088	22	2.1
Parkes	1,010	1,023	13	1.3
Queanbeyan	421	438	17	4.0
Tuggeranong	469	468	-1	-0.2
Tumut	360	337	-23	-6.4
Ulladulla	562	568	6	1.1
Wagga	1,606	1,702	96	6.0
Woden	400	413	13	3.3
Yass	104	118	14	13.5
Young	454	448	-6	-1.3
Other (a)	20	17	-3	%
Total	19,450	19,757	307	1.6

Note: For footnotes see end of table.

**TABLE 7 - JOB SEEKERS RECEIVING NEWSTART ALLOWANCE AND YOUTH ALLOWANCE
(OTHER) BY AREA SUPPORT OFFICE AND CUSTOMER SERVICE CENTRE**

<i>Area Support Office and Customer Service Centre</i>	June 2007	July 2007	Variation June - July	
			Number	Per cent
<i>NORTH CENTRAL VICTORIA</i>				
Airport West	1,052	1,040	-12	-1.1
Albury	2,237	2,259	22	1.0
Box Hill	1,496	1,545	49	3.3
Broadmeadows	3,380	3,415	35	1.0
Camberwell	874	864	-10	-1.1
Darebin	3,250	3,264	14	0.4
Deniliquin	327	331	4	1.2
Echuca	560	565	5	0.9
Epping	1,604	1,604	0	0.0
Greensborough	1,364	1,392	28	2.1
Heidelberg	51	49	-2	%
Moreland	2,095	1,992	-103	-4.9
Newmarket	1,401	1,379	-22	-1.6
Seymour	616	612	-4	-0.6
Shepparton	2,071	2,131	60	2.9
South Melbourne	675	659	-16	-2.4
Sunbury	714	708	-6	-0.8
Wangaratta	1,642	1,638	-4	-0.2
Windsor	2,312	2,247	-65	-2.8
Yarra	1,878	1,822	-56	-3.0
Other (a)	30	34	4	%
Total	29,629	29,550	-79	-0.3

Note: For footnotes see end of table.

**TABLE 7 - JOB SEEKERS RECEIVING NEWSTART ALLOWANCE AND YOUTH ALLOWANCE
(OTHER) BY AREA SUPPORT OFFICE AND CUSTOMER SERVICE CENTRE**

<i>Area Support Office and Customer Service Centre</i>	June 2007	July 2007	Variation June - July	
			Number	Per cent
<i>SOUTH EAST VICTORIA</i>				
Bairnsdale	848	900	52	6.1
Belgrave	462	440	-22	-4.8
Cheltenham	1,472	1,450	-22	-1.5
Cranbourne	1,087	1,092	5	0.5
Dandenong	2,408	2,459	51	2.1
Fountain Gate	1,741	1,734	-7	-0.4
Frankston	2,329	2,349	20	0.9
Glen Waverley	861	853	-8	-0.9
Hastings	544	549	5	0.9
Lilydale	1,471	1,487	16	1.1
Mornington	463	466	3	0.6
Morwell	2,144	2,191	47	2.2
Oakleigh	1,612	1,612	0	0.0
Pakenham	486	495	9	1.9
Ringwood	1,415	1,390	-25	-1.8
Rosebud	870	871	1	0.1
Rowville	393	367	-26	-6.6
Sale	751	781	30	4.0
Springvale	1,979	1,952	-27	-1.4
Wantirna	1,174	1,166	-8	-0.7
Warragul	457	472	15	3.3
Wonthaggi	618	604	-14	-2.3
Other (a)	10	11	1	%
Total	25,595	25,691	96	0.4

Note: For footnotes see end of table.

**TABLE 7 - JOB SEEKERS RECEIVING NEWSTART ALLOWANCE AND YOUTH ALLOWANCE
(OTHER) BY AREA SUPPORT OFFICE AND CUSTOMER SERVICE CENTRE**

<i>Area Support Office and Customer Service Centre</i>	June 2007	July 2007	Variation June - July	
			Number	Per cent
WEST VICTORIA				
Ararat	301	280	-21	-7.0
Ballarat	2,486	2,478	-8	-0.3
Bendigo	2,473	2,522	49	2.0
Bendigo Central	394	386	-8	-2.0
Colac	454	479	25	5.5
Corio	1,693	1,695	2	0.1
Footscray	1,491	1,476	-15	-1.0
Geelong	2,916	2,929	13	0.4
Hamilton	427	435	8	1.9
Horsham	728	709	-19	-2.6
Maryborough	455	459	4	0.9
Melton	1,096	1,095	-1	-0.1
Mildura	1,674	1,676	2	0.1
Newport	1,042	1,038	-4	-0.4
Portland	420	422	2	0.5
Stawell	196	197	1	0.5
Sunshine	2,803	2,777	-26	-0.9
Swan Hill	862	853	-9	-1.0
Warrnambool	837	898	61	7.3
Watergardens	3,210	3,129	-81	-2.5
Werribee	2,296	2,275	-21	-0.9
Other (a)	26	3	-23	%
Total	28,280	28,211	-69	-0.2

Note: For footnotes see end of table.

**TABLE 7 - JOB SEEKERS RECEIVING NEWSTART ALLOWANCE AND YOUTH ALLOWANCE
(OTHER) BY AREA SUPPORT OFFICE AND CUSTOMER SERVICE CENTRE**

<i>Area Support Office and Customer Service Centre</i>	June 2007	July 2007	Variation June - July	
			Number	Per cent
CENTRAL & NORTHERN QUEENSLAND				
Atherton	553	569	16	2.9
Ayr	351	346	-5	-1.4
Bamaga RASC (Nth Peninsula RASC)	26	27	1	%
Biloela	126	135	9	7.1
Bowen	350	346	-4	-1.1
Cairns Families	8	11	3	%
Cairns Jobseekers	2,346	2,368	22	0.9
Cairns Remote (Indigenous ISC)	541	555	14	2.6
Cairns Seniors & Carers	2	3	1	%
Charters Towers	270	265	-5	-1.9
Edmonton	0	0	0	%
Emerald	250	242	-8	-3.2
Gladstone	722	780	58	8.0
Greenfields	2	5	3	%
Ingham	302	281	-21	-7.0
Innisfail	530	537	7	1.3
Longreach	75	73	-2	%
Mackay Jobseekers	1,275	1,269	-6	-0.5
Mackay Seniors & Carers	1	2	1	%
Mareeba	401	422	21	5.2
Mossman	331	305	-26	-7.9
Mt Isa	673	659	-14	-2.1
Normanton	121	121	0	0.0
Palm Island	257	261	4	1.6
Rockhampton Families	9	9	0	%
Rockhampton Jobseekers	1,573	1,588	15	1.0
Rockhampton Seniors & Carers	4	4	0	%
Smithfield	1	0	-1	%
Thursday Island	140	146	6	4.3
Townsville City	2	1	-1	%
Townsville Families	6	7	1	%
Townsville Jobseekers	2,392	2,429	37	1.5
Townsville Seniors & Carers	3	2	-1	%
Western Cape RASC	157	149	-8	-5.1
Whitsunday	298	334	36	12.1
Yarrabah RASC	259	263	4	1.5
Yeppoon	284	286	2	0.7
Other (a)	43	43	0	%
Total	14,684	14,843	159	1.1

Note: For footnotes see end of the table.

**TABLE 7 - JOB SEEKERS RECEIVING NEWSTART ALLOWANCE AND YOUTH ALLOWANCE
(OTHER) BY AREA SUPPORT OFFICE AND CUSTOMER SERVICE CENTRE**

<i>Area Support Office and Customer Service Centre</i>	June 2007	July 2007	Variation June - July	
			Number	Per cent
<i>SOUTH & EAST QUEENSLAND</i>				
Bundaberg	2,558	2,595	37	1.4
Caboolture	1,749	1,714	-35	-2.0
Caboolture FCC and SC&R	0	0	0	%
Caloundra	940	953	13	1.4
Cherbourg	8	10	2	%
Chermside	814	842	28	3.4
Fortitude Valley	1,013	1,002	-11	-1.1
Gympie	1,167	1,112	-55	-4.7
Hervey Bay	1,116	1,115	-1	-0.1
Kawana Waters	439	437	-2	-0.5
Kingaroy	800	801	1	0.1
Kippa-Ring	1,250	1,253	3	0.2
Maroochydore	1,225	1,231	6	0.5
Maryborough	1,086	1,107	21	1.9
Mitchelton	691	711	20	2.9
Nambour	887	887	0	0.0
Noosa	910	914	4	0.4
Nundah	929	913	-16	-1.7
Strathpine	810	809	-1	-0.1
Toowong	620	617	-3	-0.5
Other (a)	17	22	5	%
Total	19,029	19,045	16	0.1

Note: For footnotes see end of table.

**TABLE 7 - JOB SEEKERS RECEIVING NEWSTART ALLOWANCE AND YOUTH ALLOWANCE
(OTHER) BY AREA SUPPORT OFFICE AND CUSTOMER SERVICE CENTRE**

<i>Area Support Office and Customer Service Centre</i>	June 2007	July 2007	Variation June - July	
			Number	Per cent
<i>SOUTH & WEST QUEENSLAND</i>				
Beenleigh	1,413	1,405	-8	-0.6
Browns Plains	1,183	1,210	27	2.3
Capalaba	538	552	14	2.6
Charleville	178	165	-13	-7.3
Cleveland	633	626	-7	-1.1
Dalby	466	488	22	4.7
Goodna	901	865	-36	-4.0
Goondiwindi	306	305	-1	-0.3
Inala	1,095	1,064	-31	-2.8
Ipswich	1,746	1,775	29	1.7
Mt Gravatt	1,393	1,351	-42	-3.0
Roma	134	132	-2	-1.5
South Brisbane	724	715	-9	-1.2
Stanthorpe	352	362	10	2.8
Stones Corner	1,216	1,172	-44	-3.6
Toowoomba	1,976	2,045	69	3.5
Warwick	431	449	18	4.2
Woodridge	1,552	1,581	29	1.9
Wynnum	653	647	-6	-0.9
Other (a)	4	13	9	%
Total	16,894	16,922	28	0.2

Note: For footnotes see end of table.

**TABLE 7 - JOB SEEKERS RECEIVING NEWSTART ALLOWANCE AND YOUTH ALLOWANCE
(OTHER) BY AREA SUPPORT OFFICE AND CUSTOMER SERVICE CENTRE**

<i>Area Support Office and Customer Service Centre</i>	June 2007	July 2007	Variation June - July	
			Number	Per cent
<i>SOUTH AUSTRALIA</i>				
Berri	961	928	-33	-3.4
Broken Hill	888	887	-1	-0.1
Ceduna	242	242	0	0.0
Coober Pedy	143	142	-1	-0.7
Currie Street	737	720	-17	-2.3
Elizabeth	2,585	2,619	34	1.3
Enfield	1,493	1,486	-7	-0.5
Gawler	1,166	1,159	-7	-0.6
Glenelg	726	722	-4	-0.6
Kadina	778	775	-3	-0.4
Kilkenny	1,656	1,659	3	0.2
Marion	1,646	1,682	36	2.2
Modbury	1,806	1,811	5	0.3
Mt Barker	608	584	-24	-3.9
Mt Gambier	1,312	1,340	28	2.1
Murray Bridge	777	809	32	4.1
Noarlunga	2,550	2,460	-90	-3.5
Norwood	1,338	1,344	6	0.4
Port Adelaide	1,466	1,446	-20	-1.4
Port Augusta	617	682	65	10.5
Port Lincoln	539	599	60	11.1
Port Pirie	975	1,010	35	3.6
Salisbury	2,316	2,319	3	0.1
Torrensville	1,352	1,347	-5	-0.4
Victor Harbor	648	653	5	0.8
Whyalla	696	736	40	5.7
Other (a)	56	54	-2	%
Total	30,077	30,215	138	0.5

Note: For footnotes see end of table.

**TABLE 7 - JOB SEEKERS RECEIVING NEWSTART ALLOWANCE AND YOUTH ALLOWANCE
(OTHER) BY AREA SUPPORT OFFICE AND CUSTOMER SERVICE CENTRE**

<i>Area Support Office and Customer Service Centre</i>	June 2007	July 2007	Variation June - July	
			Number	Per cent
WEST AUSTRALIA				
Albany	759	812	53	7.0
Armadale	708	723	15	2.1
Bunbury	1,336	1,393	57	4.3
Busselton	266	268	2	0.8
Cannington	998	1,053	55	5.5
Carnarvon	206	223	17	8.3
Cocos Islands	45	45	0	%
Collie	5	5	0	%
Community Team Perth	61	68	7	%
Curtin on Campus SSC	11	20	9	%
Esperance	243	272	29	11.9
Fremantle	1,000	1,016	16	1.6
Fremantle SACC	1	2	1	%
Fremantle SSC	35	69	34	%
Geraldton	1,198	1,344	146	12.2
Gosnells	703	730	27	3.8
Innaloo	1,082	1,054	-28	-2.6
Joondalup	927	945	18	1.9
Joondalup SACC	3	2	-1	%
Joondalup SSC	18	57	39	%
Kalgoorlie	549	552	3	0.5
Karratha	262	269	7	2.7
Laverton RASC	54	56	2	%
Mandurah	932	955	23	2.5
Meekatharra RASC	5	9	4	%
Midland	1,416	1,458	42	3.0
Mirrabooka	1,269	1,307	38	3.0
Morley	1,121	1,151	30	2.7
Morley - Dewar Street	2	3	1	%
Morley SSC	10	44	34	%
Newman RASC	116	121	5	4.3
Northam	463	477	14	3.0
Rockingham	1,140	1,139	-1	-0.1
South Hedland	322	341	19	5.9
Spearwood	702	719	17	2.4
Victoria Park	1,207	1,188	-19	-1.6
Warwick Grove	524	547	23	4.4
Other (a)	31	36	5	%
Total	19,730	20,473	743	3.8

Note: For footnotes see end of table.

**TABLE 7 - JOB SEEKERS RECEIVING NEWSTART ALLOWANCE AND YOUTH ALLOWANCE
(OTHER) BY AREA SUPPORT OFFICE AND CUSTOMER SERVICE CENTRE**

<i>Area Support Office and Customer Service Centre</i>	June 2007	July 2007	Variation June - July	
			Number	Per cent
TASMANIA				
Bridgewater	556	574	18	3.2
Burnie	1,487	1,511	24	1.6
Devonport	1,664	1,691	27	1.6
Glenorchy	1,846	1,877	31	1.7
Hobart	1,511	1,378	-133	-8.8
Huonville	492	475	-17	-3.5
Launceston	3,147	3,132	-15	-0.5
Mowbray	10	8	-2	%
Rosny Park	938	976	38	4.1
Sorell	488	478	-10	-2.0
Other (a)	52	49	-3	%
Total	12,191	12,149	-42	-0.3
NORTH AUSTRALIA				
Alice Springs	1,163	1,114	-49	-4.2
Borroloola RASC	35	36	1	%
Broome	341	360	19	5.6
Casuarina	819	789	-30	-3.7
Derby	103	95	-8	-7.8
Fitzroy Crossing RASC	12	16	4	%
Halls Creek RASC	90	95	5	%
Katherine	491	529	38	7.7
Knuckey Street	516	509	-7	-1.4
Kununurra	148	144	-4	-2.7
Maningrida	73	76	3	%
Nhulunbuy	191	194	3	1.6
Palmerston	714	728	14	2.0
Tangentyere	169	160	-9	-5.3
Tennant Creek	137	136	-1	-0.7
Tennant Creek Remote	56	51	-5	%
Tiwi Islands RASC	166	159	-7	-4.2
Top End Remote	261	269	8	3.1
Wadeye RASC	35	47	12	%
Yuendumu RASC	26	27	1	%
Other (a)	21	20	-1	%
Total	5,567	5,554	-13	-0.2

Note: For footnotes see end of table.

**TABLE 7 - JOB SEEKERS RECEIVING NEWSTART ALLOWANCE AND YOUTH ALLOWANCE
(OTHER) BY AREA SUPPORT OFFICE AND CUSTOMER SERVICE CENTRE**

<i>Area Support Office and Customer Service Centre</i>	June 2007	July 2007	Variation June - July	
			Number	Per cent
PACIFIC CENTRAL				
Ballina	992	988	-4	-0.4
Beaudesert	308	325	17	5.5
Biggera Waters	1,276	1,291	15	1.2
Bourke	421	438	17	4.0
Brunswick Heads	534	530	-4	-0.7
Byron Bay	608	580	-28	-4.6
Casino	582	569	-13	-2.2
Coffs Harbour	2,578	2,716	138	5.4
Grafton	1,563	1,564	1	0.1
Lightning Ridge	173	182	9	5.2
Lismore	1,830	1,828	-2	-0.1
Maclean	0	0	0	%
Moree	497	512	15	3.0
Murwillumbah	548	556	8	1.5
Narrabri	403	419	16	4.0
Nerang	1,313	1,276	-37	-2.8
Palm Beach	1,669	1,643	-26	-1.6
Robina SCR	2	1	-1	%
Southport	1,867	1,795	-72	-3.9
Tweed Heads	1,299	1,317	18	1.4
Walgett	226	230	4	1.8
Other (a)	25	29	4	%
Total	18,714	18,789	75	0.4
OTHER				
Centrelink Call Centres (b)	17	19	2	%
Not coded to an area	17	17	0	%
National rounding adjustment (c)	1	-57	-58	%
AUSTRALIA	326,164	327,510	1,346	0.4

(a) Recipients not coded to a Customer Service Centre.

(b) Job seekers receiving NSA / YA (o) in Centrelink Call Centres which are not counted in the various Area Offices.

(c) Prior to this publication, the rounding adjustment was included in the Fairfield CSC.

Notes:

- Where the Customer Service Centre has a population less than 100 in both of the reported months, the monthly percentage variation has been suppressed and replaced with the percentage symbol '%'. .

- Most of the figures in this publication are monthly averages of weekly data and have been rounded. As a result, discrepancies may occur between sums of component items and totals, and in the calculation of variations.

**TABLE 8 - JOB SEEKERS RECEIVING NEWSTART ALLOWANCE AND YOUTH ALLOWANCE (OTHER)
FORTNIGHTLY EARNINGS (%) AND SEX (a), FORTNIGHT ENDING 20 JULY 2007**

<i>Fortnightly Earnings</i>	Short-term job seekers	Long-term job seekers	Total job seekers
MALES			
Did not earn an income	84.8	81.5	83.1
Earned an income	15.2	18.5	16.9
Amount earned			
\$0.01-\$62.00	0.7	0.9	0.8
\$62.01-\$142.00	2.2	2.8	2.5
\$142.01-\$236.00	2.5	3.3	2.9
\$236.01-\$316.00	1.8	2.4	2.1
Over \$316.00	8.0	9.2	8.6
Total	100.0	100.0	100.0
<i>Job seekers receiving NSA and YA (other)</i>	96,325	105,087	201,412
FEMALES			
Did not earn an income	74.1	71.4	72.5
Earned an income	25.9	28.6	27.5
Amount earned			
\$0.01-\$62.00	1.2	1.3	1.2
\$62.01-\$142.00	3.2	3.7	3.5
\$142.01-\$236.00	4.1	4.4	4.2
\$236.01-\$316.00	3.0	3.3	3.2
Over \$316.00	14.5	15.9	15.3
Total	100.0	100.0	100.0
<i>Job seekers receiving NSA and YA (other)</i>	52,288	72,040	124,328
PERSONS			
Did not earn an income	81.0	77.4	79.0
Earned an income	19.0	22.6	21.0
Amount earned			
\$0.01-\$62.00	0.8	1.1	1.0
\$62.01-\$142.00	2.6	3.1	2.9
\$142.01-\$236.00	3.1	3.7	3.4
\$236.01-\$316.00	2.2	2.7	2.5
Over \$316.00	10.3	11.9	11.2
Total	100.0	100.0	100.0
<i>Job seekers receiving NSA and YA (other)</i>	148,613	177,127	325,740

(a) Total figures in this table are different from Tables 2 to 7 because of different methodologies applied. Tables 2 to 7 are based on averages of weekly figures while this table is based on point in time data. See Explanatory Notes for further information.

**TABLE A - CONCORDANCE BETWEEN PRE AND POST 1 JULY 2007 AREA SUPPORT OFFICES
AND CUSTOMER SERVICE CENTRES**

<i>Current Area Support Office and Customer Service Centre</i>	<i>Previous Area Support Office</i>	<i>Previous Customer Service Centre name (if applicable)</i>
<i>SYDNEY EAST NEW SOUTH WALES</i>		
Bankstown	South Metropolitan NSW	
Bondi Junction	East Coast (Sydney)	
Burwood	South Metropolitan NSW	
Campsie	South Metropolitan NSW	
Caringbah	East Coast (Wollongong)	
Chatswood	East Coast (Sydney)	
Corrimal	East Coast (Wollongong)	
Dapto	East Coast (Wollongong)	
Darlinghurst	East Coast (Sydney)	
Darlinghurst CCU	East Coast (Sydney)	Darlinghurst YSU
Haymarket	East Coast (Sydney)	Included in Other
Hornsby	East Coast (Sydney)	
Hurstville (a)	East Coast (Wollongong)	
Lakemba	South Metropolitan NSW	
Leichhardt	East Coast (Sydney)	
Maroubra	East Coast (Sydney)	
Marrickville	East Coast (Sydney)	
Northern Beaches	East Coast (Sydney)	
Participation Sydney East	East Coast (Wollongong)	Included in Other
Redfern	East Coast (Wollongong)	
Revesby	South Metropolitan NSW	
Rockdale	East Coast (Wollongong)	
Ryde	West NSW	
Shellharbour	East Coast (Wollongong)	
Sutherland	East Coast (Wollongong)	
Wollongong	East Coast (Wollongong)	

(a) Data for these CSC's vary slightly from June 2007 published data. In this (and subsequent) publication(s), these CSC's also include data for any linked teams.

**TABLE A - CONCORDANCE BETWEEN PRE AND POST 1 JULY 2007 AREA SUPPORT OFFICES
AND CUSTOMER SERVICE CENTRES**

<i>Current Area Support Office and Customer Service Centre</i>	<i>Previous Area Support Office</i>	<i>Previous Customer Service Centre name (if applicable)</i>
<i>SYDNEY WEST NEW SOUTH WALES</i>		
Auburn	West NSW	
Baulkham Hills	West NSW	
Blacktown	West NSW	
Cabramatta	South Metropolitan NSW	
Camden	South Metropolitan NSW	
Campbelltown	South Metropolitan NSW	
Fairfield	South Metropolitan NSW	Included rounding adjustment
Hawkesbury	West NSW	
Ingleburn (a)	South Metropolitan NSW	
Katoomba	West NSW	
Liverpool	South Metropolitan NSW	
Merrylands	West NSW	
Mt Druitt	West NSW	
Parramatta	West NSW	
Penrith	West NSW	
Springwood	West NSW	
St Marys	West NSW	

(a) Data for these CSC's vary slightly from June 2007 published data. In this (and subsequent) publication(s), these CSC's also include data for any linked teams.

**TABLE A - CONCORDANCE BETWEEN PRE AND POST 1 JULY 2007 AREA SUPPORT OFFICES
AND CUSTOMER SERVICE CENTRES**

<i>Current Area Support Office and Customer Service Centre</i>	<i>Previous Area Support Office</i>	<i>Previous Customer Service Centre name (if applicable)</i>
HUNTER NEW SOUTH WALES		
Armidale	Hunter NSW	
Cessnock	Hunter NSW	
Charlestown (a)	Hunter NSW	
Ettalong	Hunter NSW	
Glen Innes	New	
Gosford	Hunter NSW	
Gunnedah	Hunter NSW	
Inverell	Hunter NSW	
Kempsey	Hunter NSW	
Kurri Kurri	Hunter NSW	
Lakehaven	Hunter NSW	
Maitland (a)	Hunter NSW	
Mayfield	Hunter NSW	
Muswellbrook	Hunter NSW	
Nambucca Heads	Hunter NSW	
Nelson Bay	Hunter NSW	
Newcastle	Hunter NSW	
Port Macquarie	Hunter NSW	
Raymond Terrace	Hunter NSW	
Singleton	Hunter NSW	
Tamworth (a)	Hunter NSW	
Taree	Hunter NSW	
The Entrance	Hunter NSW	
Toronto	Hunter NSW	
Tuncurry (Forster)	Hunter NSW	Forster
Wallsend (a)	Hunter NSW	
Wyang	Hunter NSW	

(a) Data for these CSC's vary slightly from June 2007 published data. In this (and subsequent) publication(s), these CSC's also include data for any linked teams.

**TABLE A - CONCORDANCE BETWEEN PRE AND POST 1 JULY 2007 AREA SUPPORT OFFICES
AND CUSTOMER SERVICE CENTRES**

<i>Current Area Support Office and Customer Service Centre</i>	<i>Previous Area Support Office</i>	<i>Previous Customer Service Centre name (if applicable)</i>
<i>SOUTH WEST NEW SOUTH WALES</i>		
Batemans Bay	South West NSW	
Bathurst	South West NSW	
Bega	South West NSW	
Belconnen	South West NSW	
Bowral	South West NSW	
Braddon	South West NSW	
Cooma	South West NSW	
Cowra	South West NSW	
Dubbo	South West NSW	
Goulburn	South West NSW	
Griffith	South West NSW	
Gungahlin	South West NSW	
Lanyon	South West NSW	
Leeton	South West NSW	
Lithgow	West NSW	
Mudgee	West NSW	
Narooma	South West NSW	
Nowra	East Coast (Wollongong)	
Orange	South West NSW	
Parkes	South West NSW	
Queanbeyan	South West NSW	
Tuggeranong	South West NSW	
Tumut	South West NSW	
Ulladulla	East Coast (Wollongong)	
Wagga	South West NSW	
Woden	South West NSW	
Yass	South West NSW	
Young	South West NSW	

**TABLE A - CONCORDANCE BETWEEN PRE AND POST 1 JULY 2007 AREA SUPPORT OFFICES
AND CUSTOMER SERVICE CENTRES**

<i>Current Area Support Office and Customer Service Centre</i>	<i>Previous Area Support Office</i>	<i>Previous Customer Service Centre name (if applicable)</i>
<i>NORTH CENTRAL VICTORIA</i>		
Airport West	West Victoria	Essendon (Airport West)
Albury	South West NSW	
Box Hill	North-Central Victoria	
Broadmeadows	North-Central Victoria	
Camberwell	South-East Victoria	
Darebin	North-Central Victoria	
Deniliquin	South West NSW	
Echuca	North-Central Victoria	
Epping	North-Central Victoria	
Greensborough	North-Central Victoria	
Heidelberg (a)	North-Central Victoria	
Moreland	North-Central Victoria	
Newmarket	North-Central Victoria	
Seymour	North-Central Victoria	
Shepparton	North-Central Victoria	
South Melbourne	North-Central Victoria	Sth Melbourne
Sunbury	West Victoria	
Wangaratta	North-Central Victoria	
Windsor	North-Central Victoria	Windsor (VIC)
Yarra	North-Central Victoria	

(a) Data for these CSC's vary slightly from June 2007 published data. In this (and subsequent) publication(s), these CSC's also include data for any linked teams.

**TABLE A - CONCORDANCE BETWEEN PRE AND POST 1 JULY 2007 AREA SUPPORT OFFICES
AND CUSTOMER SERVICE CENTRES**

<i>Current Area Support Office and Customer Service Centre</i>	<i>Previous Area Support Office</i>	<i>Previous Customer Service Centre name (if applicable)</i>
<i>SOUTH EAST VICTORIA</i>		
Bairnsdale	South-East Victoria	
Belgrave	South-East Victoria	
Cheltenham	South-East Victoria	
Cranbourne	South-East Victoria	
Dandenong	South-East Victoria	
Fountain Gate	South-East Victoria	
Frankston	South-East Victoria	
Glen Waverley	South-East Victoria	
Hastings	South-East Victoria	Included in Frankston
Lilydale	North-Central Victoria	
Mornington	South-East Victoria	
Morwell	South-East Victoria	
Oakleigh	South-East Victoria	
Pakenham	South-East Victoria	Included in Fountain Gate
Ringwood	North-Central Victoria	
Rosebud	South-East Victoria	
Rowville	South-East Victoria	
Sale	South-East Victoria	
Springvale (a)	South-East Victoria	
Wantirna	South-East Victoria	
Warragul	South-East Victoria	
Wonthaggi	South-East Victoria	

(a) Data for these CSC's vary slightly from June 2007 published data. In this (and subsequent) publication(s), these CSC's also include data for any linked teams.

**TABLE A - CONCORDANCE BETWEEN PRE AND POST 1 JULY 2007 AREA SUPPORT OFFICES
AND CUSTOMER SERVICE CENTRES**

<i>Current Area Support Office and Customer Service Centre</i>	<i>Previous Area Support Office</i>	<i>Previous Customer Service Centre name (if applicable)</i>
WEST VICTORIA		
Ararat	West Victoria	
Ballarat	West Victoria	
Bendigo	West Victoria	
Bendigo Central	West Victoria	B Central
Colac	West Victoria	
Corio	West Victoria	
Footscray	West Victoria	
Geelong	West Victoria	
Hamilton	West Victoria	
Horsham	West Victoria	
Maryborough	West Victoria	Maryborough (VIC)
Melton	West Victoria	
Mildura	West Victoria	
Newport	West Victoria	
Portland	West Victoria	
Stawell	West Victoria	
Sunshine	West Victoria	
Swan Hill	West Victoria	
Warrnambool	West Victoria	
Watergardens	West Victoria	
Werribee	West Victoria	

**TABLE A - CONCORDANCE BETWEEN PRE AND POST 1 JULY 2007 AREA SUPPORT OFFICES
AND CUSTOMER SERVICE CENTRES**

<i>Current Area Support Office and Customer Service Centre</i>	<i>Previous Area Support Office</i>	<i>Previous Customer Service Centre name (if applicable)</i>
<i>CENTRAL & NORTHERN QUEENSLAND</i>		
Atherton	Central & Northern Queensland	
Ayr	Central & Northern Queensland	
Bamaga RASC (North Peninsula RASC)	Central & Northern Queensland	Included in Other
Biloela	Central & Northern Queensland	
Bowen	Central & Northern Queensland	
Cairns Families	Central & Northern Queensland	Cairns FAO
Cairns Jobseekers	Central & Northern Queensland	Cairns EMS
Cairns Remote (Indigenous ISC)	Central & Northern Queensland	Indigenous ISC
Cairns Seniors & Carers	Central & Northern Queensland	Cairns Ret
Charters Towers	Central & Northern Queensland	
Edmonton	Central & Northern Queensland	
Emerald	Central & Northern Queensland	
Gladstone	Central & Northern Queensland	
Greenfields	Central & Northern Queensland	
Ingham	Central & Northern Queensland	
Innisfail	Central & Northern Queensland	
Longreach	Central & Northern Queensland	
Mackay Jobseekers	Central & Northern Queensland	Mackay
Mackay Seniors & Carers	Central & Northern Queensland	Included in Other
Mareeba	Central & Northern Queensland	
Mossman	Central & Northern Queensland	
Mt Isa	Central & Northern Queensland	
Normanton	Central & Northern Queensland	
Palm Island	Central & Northern Queensland	
Rockhampton Families	Central & Northern Queensland	Included in Other
Rockhampton Jobseekers	Central & Northern Queensland	Rockhampton
Rockhampton Seniors & Carers	Central & Northern Queensland	Included in Other
Smithfield	Central & Northern Queensland	
Thursday Island	Central & Northern Queensland	Thursday Is
Townsville City	Central & Northern Queensland	
Townsville Families	Central & Northern Queensland	Townsville FAO
Townsville Jobseekers	Central & Northern Queensland	Townsville Employment Services
Townsville Seniors & Carers	Central & Northern Queensland	Townsville Retirement
Western Cape RASC	Central & Northern Queensland	Included in Other
Whitsunday	Central & Northern Queensland	
Yarrabah RASC	Central & Northern Queensland	
Yeppoon	Central & Northern Queensland	

**TABLE A - CONCORDANCE BETWEEN PRE AND POST 1 JULY 2007 AREA SUPPORT OFFICES
AND CUSTOMER SERVICE CENTRES**

<i>Current Area Support Office and Customer Service Centre</i>	<i>Previous Area Support Office</i>	<i>Previous Customer Service Centre name (if applicable)</i>
<i>SOUTH & EAST QUEENSLAND</i>		
Bundaberg	Brisbane	
Caboolture	Brisbane	
Caboolture FCC and SC&R	New	
Caloundra	Brisbane	
Cherbourg	Brisbane	Included in Other
Chermside	Brisbane	
Fortitude Valley	Brisbane	
Gympie	Brisbane	
Hervey Bay	Brisbane	
Kawana Waters	Brisbane	
Kingaroy	Brisbane	
Kippa-Ring	Brisbane	Redcliffe
Maroochydore	Brisbane	
Maryborough	Brisbane	
Mitchelton	Brisbane	
Nambour	Brisbane	
Noosa	Brisbane	
Nundah	Brisbane	
Strathpine	Brisbane	
Toowong	Brisbane	

**TABLE A - CONCORDANCE BETWEEN PRE AND POST 1 JULY 2007 AREA SUPPORT OFFICES
AND CUSTOMER SERVICE CENTRES**

<i>Current Area Support Office and Customer Service Centre</i>	<i>Previous Area Support Office</i>	<i>Previous Customer Service Centre name (if applicable)</i>
<i>SOUTH & WEST QUEENSLAND</i>		
Beenleigh	Pacific Central	
Browns Plains	Pacific Central	
Capalaba	Brisbane	
Charleville	Pacific Central	
Cleveland	Brisbane	
Dalby	Pacific Central	
Goodna	Pacific Central	
Goondiwindi	Pacific Central	
Inala	Pacific Central	
Ipswich	Pacific Central	
Mt Gravatt	Brisbane	
Roma	Pacific Central	
South Brisbane	Brisbane	Annerley
Stanthorpe	Pacific Central	
Stones Corner	Brisbane	
Toowoomba	Pacific Central	
Warwick	Pacific Central	
Woodridge	Pacific Central	
Wynnum	Brisbane	

**TABLE A - CONCORDANCE BETWEEN PRE AND POST 1 JULY 2007 AREA SUPPORT OFFICES
AND CUSTOMER SERVICE CENTRES**

<i>Current Area Support Office and Customer Service Centre</i>	<i>Previous Area Support Office</i>	<i>Previous Customer Service Centre name (if applicable)</i>
SOUTH AUSTRALIA		
Berri	South Australia	
Broken Hill	South Australia	
Ceduna	South Australia	
Cooper Pedy	South Australia	
Currie Street	South Australia	Currie St (Adelaide)
Elizabeth	South Australia	
Enfield (a)	South Australia	
Gawler	South Australia	
Glenelg	South Australia	
Kadina	South Australia	
Kilkenny	South Australia	
Marion	South Australia	Edwardstown
Modbury	South Australia	
Mt Barker	South Australia	
Mt Gambier	South Australia	
Murray Bridge	South Australia	
Noarlunga	South Australia	
Norwood (a)	South Australia	
Port Adelaide	South Australia	
Port Augusta	South Australia	
Port Lincoln	South Australia	
Port Pirie	South Australia	
Salisbury	South Australia	
Torrensville	South Australia	
Victor Harbor	South Australia	
Whyalla	South Australia	

(a) Data for these CSC's vary slightly from June 2007 published data. In this (and subsequent) publication(s), these CSC's also include data for any linked teams.

**TABLE A - CONCORDANCE BETWEEN PRE AND POST 1 JULY 2007 AREA SUPPORT OFFICES
AND CUSTOMER SERVICE CENTRES**

<i>Current Area Support Office and Customer Service Centre</i>	<i>Previous Area Support Office</i>	<i>Previous Customer Service Centre name (if applicable)</i>
WEST AUSTRALIA		
Albany	Western Australia	
Armadale	Western Australia	
Bunbury	Western Australia	
Busselton	Western Australia	
Cannington	Western Australia	
Carnarvon	Western Australia	
Cocos Islands	Western Australia	
Collie	Western Australia	
Community Team Perth	Western Australia	Included in Other
Curtin on Campus SSC	Western Australia	Included in Other
Esperance	Western Australia	
Fremantle	Western Australia	
Fremantle SACC	Western Australia	Included in Other
Fremantle SSC	Western Australia	Included in Other
Geraldton	Western Australia	
Gosnells	Western Australia	
Innaloo	Western Australia	
Joondalup	Western Australia	
Joondalup SACC	Western Australia	Included in Other
Joondalup SSC	Western Australia	Included in Other
Kalgoorlie	Western Australia	
Karratha	Western Australia	
Laverton RASC	Western Australia	Included in Other
Mandurah	Western Australia	
Meekatharra RASC	Western Australia	Included in Other
Midland	Western Australia	
Mirrabooka	Western Australia	
Morley	Western Australia	
Morley - Dewar Street	Western Australia	Included in Other
Morley SSC	Western Australia	Included in Other
Newman RASC	Western Australia	Included in Other
Northam	Western Australia	
Rockingham	Western Australia	
South Hedland	Western Australia	
Spearwood	Western Australia	
Victoria Park	Western Australia	
Warwick Grove	Western Australia	

**TABLE A - CONCORDANCE BETWEEN PRE AND POST 1 JULY 2007 AREA SUPPORT OFFICES
AND CUSTOMER SERVICE CENTRES**

<i>Current Area Support Office and Customer Service Centre</i>	<i>Previous Area Support Office</i>	<i>Previous Customer Service Centre name (if applicable)</i>
TASMANIA		
Bridgewater	Tasmania	
Burnie	Tasmania	
Devonport	Tasmania	
Glenorchy	Tasmania	
Hobart	Tasmania	
Huonville	Tasmania	
Launceston	Tasmania	
Mowbray	Tasmania	Included in Other
Rosny Park	Tasmania	
Sorell	Tasmania	
NORTH AUSTRALIA		
Alice Springs	North Australia	
Borroloola RASC	North Australia	Included in Other
Broome	North Australia	
Casuarina	North Australia	
Derby	North Australia	
Fitzroy Crossing RASC	North Australia	Included in Other
Halls Creek RASC	North Australia	Included in Other
Katherine	North Australia	
Knuckey Street	North Australia	
Kununurra	North Australia	
Maningrida	North Australia	Included in Other
Nhulunbuy	North Australia	
Palmerston	North Australia	
Tangentyere	North Australia	
Tennant Creek	North Australia	
Tennant Creek Remote	North Australia	
Tiwi Islands RASC	North Australia	Included in Other
Top End Remote	North Australia	Included in Other
Wadeye RASC	North Australia	Included in Other
Yuendumu RASC	North Australia	Included in Other

**TABLE A - CONCORDANCE BETWEEN PRE AND POST 1 JULY 2007 AREA SUPPORT OFFICES
AND CUSTOMER SERVICE CENTRES**

<i>Current Area Support Office and Customer Service Centre</i>	<i>Previous Area Support Office</i>	<i>Previous Customer Service Centre name (if applicable)</i>
<i>PACIFIC CENTRAL</i>		
Ballina	Pacific Central	
Beaudesert	Pacific Central	
Biggera Waters	Pacific Central	
Bourke	South West NSW	
Brunswick Heads	Pacific Central	
Byron Bay	Pacific Central	
Casino	Pacific Central	
Coffs Harbour	Pacific Central	
Grafton	Pacific Central	
Lightning Ridge	Pacific Central	
Lismore	Pacific Central	
Maclean	New	
Moree	Pacific Central	
Murwillumbah	Pacific Central	
Narrabri	Pacific Central	
Nerang	Pacific Central	
Palm Beach	Pacific Central	
Robina SCR	Pacific Central	Included in Other
Southport	Pacific Central	
Tweed Heads	Pacific Central	
Walgett	Pacific Central	
<i>OTHER</i>		
Centrelink Call Centres	Centrelink Call Centres	
Not coded to an area	Not coded to an area	
National rounding adjustment	South Metropolitan NSW	Included in Fairfield

EXPLANATORY NOTES

Introduction

This publication provides monthly statistical information on DEWR labour market and related payments administered by Centrelink. These Explanatory Notes provide details of the scope and methodology of the publication, as well as the policy changes which have affected the data since the publication was introduced in December 1995 by the then Department of Social Security (which became FaCS in October 1998).

Prior to December 1995, this publication was titled the *Monthly Job Search and Newstart Allowance Statistics*.

Scope

The primary focus of the publication is to provide information on unemployed people on Newstart Allowance and Youth Allowance, with a particular focus on the total number of job seekers. The number of people on Mature Age Allowance, Partner Allowance and Widow Allowance are also reported.

Methodology

Data in this publication relate to the average number of people who are both eligible (eg. meet 'unemployed' qualification) and entitled (eg. meet income and assets criteria) to receive a payment calculated over a reference month. Averages are calculated using figures collected for each Friday throughout the reference month.

Table 1 provides information on the total number of unemployed people on Newstart Allowance and Youth Allowance. The Youth Allowance population is split into Youth Allowance (full-time students), Youth Allowance (Australian Apprentices) and Youth Allowance (other) categories. Numbers of people on Mature Age Allowance, Partner Allowance and Widow Allowance are also provided.

Tables 2 and 3 provide a summary of the Newstart Allowance and Youth Allowance (other) populations and show the derivation of the respective job seeker populations (see the reference to job seekers in the Comparability of Data section of these Explanatory Notes). These populations are added together to derive the total number of job seekers. Tables 4 to 8 provide information on the total job seeker population.

The earnings data in Table 8 is derived using a different methodology to that of the other tables in the publication. Table 8 is based on the combined population of job seekers who are eligible for and entitled to receive Newstart Allowance or Youth Allowance (other) at the end of the second last week in the month. Thus, the data obtained from this table will not be directly comparable with those calculated using monthly averages in other tables.

Payment History

Youth Allowance

From 1 July 1998 Youth Allowance was introduced to provide income support to young people, including students, those looking for work, and those who are sick. Youth Allowees may be undertaking full-time study, full-time job search or a combination of approved activities. Some young people will be exempt from the activity test because of their personal circumstances, eg. illness, homelessness or major personal crisis. The Youth Allowance replaced:

- AUSTUDY for 16-24 year olds (and certain 15 year olds);
- Newstart Allowance for 16-20 year olds (and certain 15 year olds);
- Youth Training Allowance for 16-17 year olds (and certain 15 year olds);
- Sickness Allowance for 16-20 year olds (and certain 15 year olds); and
- More-than-minimum rate Family Payment for secondary students aged 16-18 not getting AUSTUDY.

Youth Allowance recipients are subject to the parental means test. Under previous arrangements, unemployed people aged 18 to 20 were not subject to the parental means test, unlike 18 to 20 year old students.

Special provisions applied for 18 to 20 year olds who were already on Newstart or Sickness Allowance at the date of announcement of Youth Allowance, and who remained on payment when Youth Allowance commenced on 1 July 1998. This group were able to remain on their existing payment and retain their existing benefits.

Youth Allowance had a significant downward effect on Newstart Allowance numbers from July 1998 and total job seeker numbers due to the parental means test.

Newstart Allowance

From 1 July 1998, Newstart Allowance for 16-20 year olds (and certain 15 year olds) was replaced by Youth Allowance. Young people aged 18 to 20 years old who were on Newstart or Sickness Allowance at the date of announcement of Youth Allowance and when Youth Allowance commenced on 1 July 1998, were able to remain on Newstart Allowance.

From 20 September 1996, Job Search Allowance and Newstart Allowance were combined into one payment - Newstart Allowance - which was payable to eligible recipients aged 18 years and over and to some people who were in receipt of Job Search Allowance and aged under 18 at 31 December 1994 (see Job Search Allowance).

Prior to 20 September 1996, Newstart Allowance was payable to eligible persons over 18 years who had been registered as unemployed with the Commonwealth Employment Service (CES) for 12 months or more.

<i>Job Search Allowance</i>	<p>From 20 September 1996, the payment was combined with Newstart Allowance to form one payment called Newstart Allowance. All Job Search Allowance recipients were transferred to Newstart Allowance.</p> <p>Prior to 20 September 1996, Job Search Allowance was payable to eligible persons who had been registered as unemployed with the CES for up to 12 months. It was also payable to eligible persons who were in receipt of Job Search Allowance and under 18 years of age at 31 December 1994. Persons aged 15 to 18 years who were not receiving Job Search Allowance prior to 1 January 1995 commenced on Youth Training Allowance.</p>
<i>Sickness Allowance</i>	<p>From 17 March 1996, persons in receipt of Newstart Allowance or Youth Training Allowance who became temporarily incapacitated no longer transferred to Sickness Allowance after 13 weeks. This change had the effect of increasing total Newstart Allowance/Youth Training Allowance figures but did not affect job seeker figures as those recipients who were incapacitated were excluded from the Newstart and Youth Training job seeker populations.</p> <p>Under current arrangements, these recipients remain on their existing payments but are exempt from the activity test for the duration of their medical certificates. People who become unemployed because of illness, and those who suffer a potential loss of income due to sickness, are paid Newstart Allowance because they are unemployed.</p> <p>Sickness Allowance for 16 to 20 year olds (and certain 15 year olds) has now been replaced by Youth Allowance, which was introduced on 1 July 1998 (see Youth Allowance).</p>
<i>Partner Allowance</i>	<p>From 20 September 2003, Partner Allowance was closed to new claimants. People on Partner Allowance before this date can remain on the allowance while they remain 'current', that is retain eligibility and entitlement for the allowance.</p> <p>From 1 July 1995 Partner Allowance has only been granted to persons who are dependent partners of pensioners and allowees and who were born before 1 July 1955, have no dependent children and have little or no recent workforce experience. Other dependent partners have to qualify for an income support payment in their own right, such as Newstart Allowance.</p> <p>Partner Allowance was introduced in September 1994, and was paid to partners of persons receiving Job Search Allowance, Newstart Allowance, Sickness Allowance or Special Benefit if certain eligibility criteria were satisfied.</p>
<i>Youth Training Allowance</i>	<p>Youth Training Allowance was replaced by Youth Allowance on 1 July 1998 (see Youth Allowance).</p> <p>From 1 January 1995, eligible persons aged under 18 years who were new entrants to the job search pool were paid Youth Training Allowance. (People who were in receipt of Job Search</p>

Allowance and aged under 18 years at 31 December 1994 continued to be paid Job Search Allowance. From 20 September 1996, those young persons still being paid Job Search Allowance were transferred to Newstart Allowance.)

Widow Allowance Widow Allowance, introduced on 1 January 1995, is payable to females aged 50 years or over who have become widowed, divorced or separated since turning 40 years (50 prior to 20 March 1997), if they meet a number of other criteria relating to current marital status and recent work experience. This has had a slight downwards effect on Newstart Allowance numbers from January 1995.

Mature Age Allowance From 20 September 2003, Mature Age Allowance was closed to new claimants. People on Mature Age Allowance before this date can remain on the allowance while they remain 'current', that is retain eligibility and entitlement for the allowance.

From 1 July 1996, the qualification conditions for Mature Age Allowance changed for new claimants. The requirement for 12 months prior receipt of income support was reduced to 9 months for people transferring from Newstart Allowance and removed entirely for people transferring from non-activity tested payments. The requirement to have been registered as unemployed for 9 months was replaced with a requirement to have no recent workforce experience. Reporting of these new claimants commenced from September 1996.

Mature Age Allowance was introduced on 24 March 1994, and was paid to long-term unemployed persons aged 60 years and over (but below Age Pension age) who had been receiving income support for 9 months or more and who were eligible for Newstart Allowance. The introduction of Mature Age Allowance had a downwards effect on Newstart Allowance numbers from April 1994 until September 2003.

Comparability of Data

There have been significant changes to the data presented in this publication due to a number of events. The main changes are:

- the method of counting recipients;
- the inclusion of some CDEP recipients in the total recipient numbers;
- the introduction of Youth Allowance in July 1998;
- the way 'job seeker' is defined; and
- the way duration is calculated.

People using this data to construct time series should note the following comments.

Definition of Recipient From July 2002, FaCS introduced a new method to more accurately measure the number of people receiving labour market and related payments. For those receiving labour market and related payments, their eligibility and entitlement status is administered by a payment system called Newstart Common Platform System. Within this system recipients who are both eligible and entitled to receive a payment have a determination

status of 'current'. The new method therefore counts these 'current' recipients.

The old method of counting recipients was specified to include all paid recipients - those who received a payment within a given fortnight. As compiled, however, this count excluded, from mid 1998, recipients who received a 'one-off' payment. These can occur, for instance, when a normal payment is interrupted (eg. payment is cancelled and then restored within that pay period) and a portion of the normal payment is paid.

The time series in Tables 1 and 4 reflect the revised method, as does the remainder of the publication. Revised historical data for these time series from May 1998 to June 2002 can be found in the July 2002 publication.

From July 2003 FaCS introduced a more sustainable methodology for this revised recipient count. Due to limitations in available data sources in 2002, the revised recipient count had to be derived through a complicated process. This more sustainable methodology resulted in slight differences from the recipient numbers used in previous editions.

Community Development Employment Projects (CDEP) From 20 March 2000, eligible participants in CDEP started receiving CDEP participant supplement and other add-ons, such as rent assistance, as part of income support payments. This added a number of new recipients to those who are normally eligible for payments reported in this publication.

Introduction of Youth Allowance The sum of the number of Newstart Allowees and Youth Training Allowees prior to July 1998 is broadly comparable with the sum of Newstart Allowees and Youth Allowees (other) after July 1998. There are two main problems in comparing these two series. The first is the exclusion of some 18 to 20 year old unemployed people due to the application of the Youth Allowance parental means test (see the Youth Allowance section under Payment History). The second is the inclusion of Sickness Allowees in the Youth Allowance (other) population.

There is greater comparability between total Newstart Allowance and Youth Training Allowance job seekers prior to July 1998 and total Newstart Allowance and Youth Allowance (other) job seekers after July 1998. This is because the Sickness Allowance group is excluded from the job seeker total. The problem, however, of the exclusion of some recipients through the application of the Youth Allowance parental means test still remains.

Job seekers Prior to July 1998, the job seeker category was defined by excluding all Newstart Allowees who did not receive a payment, recipients who were incapacitated, and those receiving a payment who were undertaking training. Some people who were not required to engage in job search were classified as job seekers, including people undertaking full-time voluntary work, people on jury duty and pregnant women around the time of the birth of their child.

From July 1998, the definition of job seekers has been placed on a sounder conceptual basis. It is now derived for Newstart Allowance and Youth Allowance (other) recipients by excluding all people who did not receive a payment due to their own and/or their partner's income, or where applicable, parental income, and all those known not to be required to search for work. People receiving Intensive Support Customised Assistance under Job Network arrangements are classified as job seekers although they may not always be undertaking job search. These people negotiate their activity agreement with their Job Network member.

The total number of job seekers (comparable to pre-July 1998 estimates) is calculated by adding together the number of job seekers in receipt of Newstart Allowance and Youth Allowance (other) - see the Explanatory Notes on *Youth Allowance*.

Duration

Following system changes in May 1998, duration has been defined according to the time a recipient spends on income support - short-term recipients are those who have been on income support for up to 12 months and long-term recipients are those who have been on income support for 12 months or more.

Prior to 1998, duration was defined according to the time a recipient was registered as unemployed - short-term recipients were people who were registered as unemployed for up to 12 months and long-term recipients were people who were registered for 12 months or more.

Closure of Mature Age and Partner Allowances

From 20 September 2003, Mature Age Allowance and Partner Allowance were closed to new claimants. People on these allowances before this date can remain on that allowance while they remain 'current', that is retain eligibility and entitlement for the allowance. The majority of people who would previously have claimed these payments will now claim Newstart Allowance.

Symbols

n.a. not available
.. not applicable

GLOSSARY

Activity test status	The activity that a Newstart Allowance or Youth Allowance (other) recipient has agreed to undertake in order to meet the activity test. To satisfy the activity test recipients must be actively seeking and willing to take up work or undertaking activities to improve their employment prospects.
Age	Age in years at time of data collection.
Area Support Office	A Centrelink office that supports a set of Customer Service Centres for a specified area. These are generally not confined to State boundaries.
Centrelink Youth Service Centre	A Centrelink Youth Service Centre consists of specialised staff who provide young people with improved access to Government services and income support. This is done by offering a mainstream service, as well as specialist case management to help access educational, labour market, job search, housing, health and general welfare assistance; and by providing a regular FaCS visiting service to youth via hostels, refuges and voluntary agencies.
Community Development Employment Projects (CDEP)	<p>The CDEP scheme is a programme funded currently by DEWR and in the past by the Aboriginal and Torres Strait Islander Commission (ATSIC). The scheme enables Aboriginal and Torres Strait Islander community councils and other approved Aboriginal and Torres Strait Islander groups to offer work to community members in activities that assist individuals in acquiring skills which benefit the community, develop business enterprises and/or lead to unsubsidised employment. The scheme also aims to develop management and business skills in an environment conducive to the principles of self-determination.</p> <p>The CDEP Participant Supplement (CPS) is payable to eligible CDEP participants. It can be paid fortnightly or as a 12 weekly payment.</p>
Customer Service Centre	A Customer Service Centre set within a particular region that provides FaCSIA, DEWR and other payments and related information and services to recipients. Customer Service Centres are managed by Area Support Offices.
Did not receive a payment	Persons who did not receive a payment due to their own income and/or that of their partner, or parents, where applicable. This group is often referred to as 'zero paid'.
Eligibility and payment status	Refer to the Methodology entry in the Explanatory Notes.
Fortnightly earnings	Amount of income earned, derived, or received by a person for the person's own use or benefit in the previous fortnight.
Incapacitated	A person on Newstart Allowance or Youth Allowance (other) who has an activity test status indicating they are temporarily ill or incapacitated. Refer to the entry for Sickness Allowance in the Explanatory Notes.

Job seekers	A person on Newstart Allowance or Youth Allowance (other) who would usually be engaged in jobsearch. See Explanatory Notes for definition and history.
Job Search Allowance (JSA)	Up to 20 September 1996, Job Search Allowance was payable to CES eligible persons who had been registered as unemployed with the CES for up to 12 months. From 20 September 1996, the payment was combined with Newstart Allowance to form one payment called Newstart Allowance. See Explanatory Notes for history.
Long-term recipients	Persons on Newstart Allowance or Youth Allowance who have been receiving income support for 12 months or more. Duration of long-term recipients can be reset to zero if they exited from payments for more than 13 weeks.
Mature Age Allowance (MAA)	From 20 September 2003, Mature Age Allowance was closed to new claimants. People on Mature Age Allowance before this date can remain on the allowance while they remain 'current', that is retain eligibility and entitlement for the allowance. Mature Age Allowance, a non-activity-tested payment, is payable to unemployed people aged 60 years and over (but below Age Pension age) with little or no recent workforce experience who meet certain requirements for previous receipt of income support. See Explanatory Notes for history.
Newstart Allowance (NSA)	Newstart Allowance is payable to eligible unemployed persons aged 21 years and over (but below Age Pension age) who satisfy the activity test. See Explanatory Notes for history.
Newstart Common Platform System (NCP)	The Newstart Common Platform System (NCP) was introduced in May 1998. The NCP administers all labour market and related payments. This includes primary payments such as Newstart Allowance, Youth Allowance, Mature Age Allowance, Widow Allowance and Partner Allowance. Other payments on the NCP include Special Benefit, Sickness Allowance, Exceptional Circumstances Relief, Farm Help and Austudy.
Partner Allowance (PA)	<p>From 20 September 2003, Partner Allowance was closed to new claimants. People on Partner Allowance before this date can remain on the allowance while they remain 'current', that is retain eligibility and entitlement for the allowance.</p> <p>Partner Allowance, a non-activity-tested payment, is payable to persons who are dependent partners of pensioners and allowees and who were born before 1 July 1955, have no dependent children and have little or no recent workforce experience. See Explanatory Notes for history.</p>
Short-term recipients	Persons on Newstart Allowance or Youth Allowance who have been receiving income support for less than 12 months. Duration of short-term recipients can be reset to zero if they exited from payments for more than 6 weeks.
States	States and Territories of Australia derived from the postcode of the recipient's residence as held on the Centrelink payment system.

Widow Allowance (WA)	<p>From 1 July 2005 Widow Allowance was closed to new claimants, unless the woman was born on or before 1 July 1955.</p> <p>Widow Allowance, a non-activity tested payment, is payable to females aged 50 years or over who have become widowed, divorced or separated since turning 40 years if they have little or no recent work experience and meet a number of other criteria relating to current marital status. See Explanatory Notes for history.</p>
Youth Training Allowance (YTA)	<p>From 1 January 1995 eligible persons aged under 18 years who were registered as unemployed with the CES were paid Youth Training Allowance. From 1 July 1998, Youth Training Allowance was replaced by Youth Allowance. See Explanatory Notes for history.</p>
Youth Allowance (YA)	<p>Youth Allowance is payable to eligible full-time students aged 16 to 25 years, and to eligible unemployed persons aged 16 to 20 years who satisfy the activity test. Note, there are certain exceptions for some 15 and 25 year olds. See Explanatory Notes for history.</p> <p>Youth Allowees may be undertaking full-time study, full-time job search or a combination of approved activities. Some young people will be exempt from the activity test because of their personal circumstances, eg. illness, homelessness or major personal crisis. See the Explanatory Notes for more information.</p>
Youth Allowance (other)	<p>Youth Allowance recipients who are not full-time students or full-time Australian Apprentices.</p>
Zero paid	<p>See 'Did not receive a payment'.</p>

APPENDIX

COMPARISONS BETWEEN DEWR UNEMPLOYMENT LABOUR MARKET PAYMENT NUMBERS AND ABS LABOUR FORCE UNEMPLOYMENT STATISTICS

Official statistics	Official unemployment statistics are released by the Australian Bureau of Statistics (ABS). The ABS uses definitions recommended by the International Labour Office which have been accepted internationally as the most appropriate for the compilation of official statistics of unemployment.
ABS definition	The ABS unemployment statistics measure the number of persons who, for a particular reference period, did not undertake any paid work, were actively looking for work and were available to start work.
DEWR Unemployment Labour Market Payment Statistics	The labour market payment statistics give the number of persons who are both eligible and entitled to receive Newstart Allowance or Youth Allowance (other). The criteria for receipt of these payments do not match those the ABS uses to determine whether a person is classed as unemployed or employed for statistical purposes.
Differences	Care should be taken when comparing the ABS labour force and DEWR labour market payment data. There are a number of reasons why the two series cannot be directly compared.
<i>Duration</i>	<p>Both DEWR and the ABS classify long-term duration as over 12 months, but use substantially different definitions of duration:</p> <p>DEWR measures duration of income support. This includes not just time on unemployment benefits but time on any income support payment.</p> <p>The ABS measures length of time unemployed using their unemployment definition.</p> <p>DEWR unemployed recipients can have breaks without payment for up to 25 weeks but still be classified as long-term income support recipients:</p> <ul style="list-style-type: none">• Recipients who do not receive a payment due to their earnings can have up to 12 weeks without a payment before they are automatically cancelled. This reduces disincentives to accept short-term work.• Long-term recipients can have another 13 weeks off payment after payment is cancelled and still keep their long-term status if they return to income support. This means they keep access to assistance such as the Employment Entry Payment and the higher payment rate for recipients over 60.

For the ABS statistics, any hours of work for a period as short as two weeks count as a break from unemployment and so are enough to reset a person's unemployment duration.

The difference between these two concepts, together with the fact that DEWR recipients are able to have ongoing part-time work (see 'employment' below) mean that many unemployed recipients remain classified by DEWR as long-term recipients when they would be classified as short-term unemployed under the ABS definition.

<i>Seasonal adjustment</i>	The ABS produces a seasonally adjusted series. The DEWR labour market payment numbers data are not seasonally adjusted.
<i>Classification</i>	<p>The ABS classifies a person as unemployed if he or she is aged 15 years and over, was not employed during the week before the interview, has actively looked for full-time or part-time work and is available to start work. From February 2004, people who had not actively looked for work because they were waiting to start a job within four weeks are also classified as unemployed.</p> <p>The Newstart Allowance and Youth Allowance (other) series generally count people who are eligible for and entitled to receive a payment between the ages of 15 years and 64 years in the case of men and 15 to 63 years in the case of women.</p>
<i>Employment</i>	Newstart Allowance and Youth Allowance (other) recipients may be employed part-time, but within an income test limit; the ABS classifies a person as "employed" if, among other things, he or she has worked for one hour or more during the survey period.
<i>Timing</i>	<p>The timing of collections of the series are different:</p> <ul style="list-style-type: none">• DEWR reports monthly average numbers of people both eligible for and entitled to receive Newstart Allowance and Youth Allowance (other). These monthly averages are calculated using figures collected for each Friday throughout the reference month.• ABS numbers are based on a sample interview survey of occupants of selected dwellings covering around 0.5% of the total Australian population. These persons are interviewed during the two weeks beginning the Monday between the 6th and 12th of each month and the information obtained is based on the week before the interview takes place.
<i>Treatment of partners</i>	The ABS series includes unemployed persons whose spouse is working, irrespective of income, whereas Newstart Allowance and Youth Allowance (other) recipients are subject to an income and assets test for themselves and their spouse.
<i>Pensioners</i>	The ABS series includes persons being paid a pension but looking for work (eg. sole parents in receipt of Parenting Payments looking for work).

<i>Non job seekers</i>	The overall Newstart Allowance and Youth Allowance (other) series includes persons who are not required to undertake jobsearch. These persons are separately identified in Tables 2 and 3, and have then been excluded in subsequent tables. These people may be undertaking training, the development of self-employment opportunities, full-time voluntary work or a combination of voluntary and part-time work which excludes them from jobsearch obligations. They may also be incapacitated or have another temporary exemption from jobsearch.
<i>Waiting periods</i>	The ABS series includes persons who are serving a waiting period before being granted Newstart Allowance or Youth Allowance (other), or whose allowance was deferred.
<i>Survey</i>	The ABS figures are derived from a Labour Force Survey which is a sample survey, whereas the DEWR statistics are a complete count of those both eligible for and entitled to receive Newstart Allowance and Youth Allowance (other).

FOR MORE INFORMATION

Labour market information

Other statistics on recipients of labour market related payments are available on request.

In addition to Newstart and Youth Allowances, statistics are also available on Partner Allowance, Mature Age Allowance and Widow Allowance.

For publication distribution enquiries email:
MI.WORKINGAGE.PAYMENTS@centrelink.gov.au

Written correspondence concerning this publication or statistics on labour market related payments should be addressed to:

Director
Working Age Payments Performance and Monitoring Section
Department of Employment and Workplace Relations
PO Box 9879
Canberra Mail Centre ACT 2601

or forwarded via facsimile to (02) 6275 3328.

Other recipient information

Statistics relating to other recipients are also available, including recipient numbers and characteristics for the various FaCSIA pensions, benefits and family payments.

Other statistical outputs

The following statistical outputs are available on request:

Department of Families, Community Services and Indigenous Affairs (FaCSIA)
Income Support Customers: a Statistical Overview
1996, 1997, 1998, 1999, 2000, 2001, 2002, 2003 and 2004.