



AUSTRALIAN REGIONAL LABOUR MARKETS

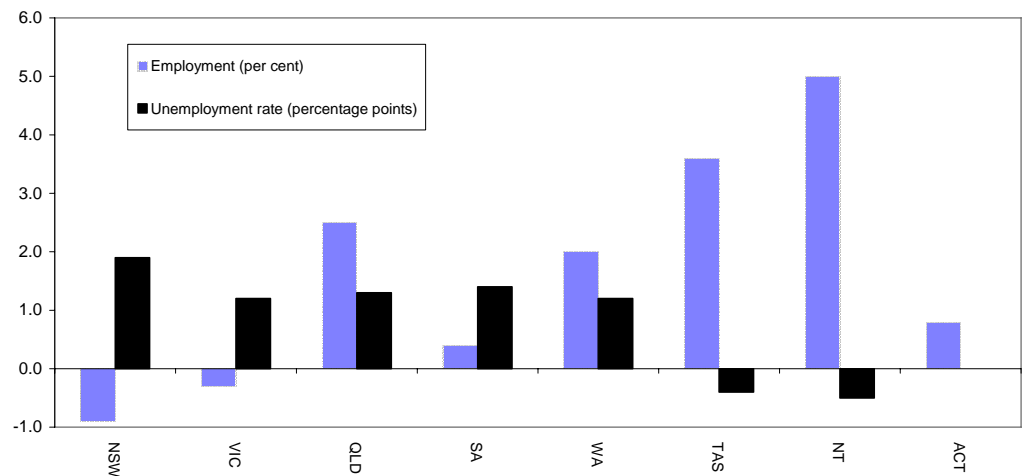
MARCH QUARTER 2009

State/Territory labour market developments

MAIN FINDINGS

Employment continued to rise in all States and Territories over the year to the March quarter 2009, with the exception of New South Wales (down by 0.9 per cent) and Victoria (down by 0.3 per cent). The largest increase in employment (in percentage terms) was recorded in the Northern Territory (up by 5.0 per cent), followed by Tasmania (up by 3.6 per cent) and Queensland (up by 2.5 per cent). Nevertheless, the unemployment rate rose in New South Wales (up by 1.9 percentage points to 6.6 per cent), South Australia (up by 1.4 percentage points to 6.3 per cent), Queensland (up by 1.3 percentage points to 5.3 per cent), Victoria (up by 1.2 percentage points to 5.9 per cent), Western Australia (up by 1.2 percentage points to 4.6 per cent) and was unchanged in the Australian Capital Territory (3.0 per cent). In contrast, the unemployment rate fell over the year in the Northern Territory (down by 0.5 percentage points to 4.6 per cent) and Tasmania (down by 0.4 percentage points to 4.7 per cent).

CHANGE IN EMPLOYMENT AND THE UNEMPLOYMENT RATE MARCH QUARTER 2008 TO MARCH QUARTER 2009



Developments at the ABS Labour Force Region Level

While employment increased in 60 per cent of regions over the year to the March quarter 2009, more than 80 per cent of regions recorded an increase in their unemployment rate over the period. Regions recording a significant increase in their unemployment rate over the year to the March quarter 2009 include:

- Fairfield-Liverpool and Outer South Western Sydney, up by 4.0 percentage points to 8.8 per cent; and
- Barwon-Western District in Victoria, up by 3.7 percentage points to 6.3 per cent.

On the other hand, the unemployment rate fell in Darling Downs-South West Queensland (by 2.2 percentage points to 1.7 per cent) and Southern Adelaide (by 0.5 percentage points to 4.7 per cent) over the period.

LABOUR FORCE STATUS BY ABS LABOUR FORCE REGION
MARCH QUARTER 2009
Not Seasonally Adjusted

State/Region	Employed		Unemployed		Unemployment rate		Employment rate (a)		Participation rate	
	'000	Annual change (%)	'000	Annual change (%)	%	Annual change (% pts)	%	Annual change (% pts)	%	Annual change (% pts)
New South Wales	3376.5	-0.9	239.1	41.3	6.6	1.9	70.1	-1.5	63.8	-0.2
<i>Sydney</i>	2212.2	-0.6	150.6	52.5	6.4	2.1	71.3	-1.4	66.1	0.2
Inner Sydney and Inner Western Sydney	320.4	3.3	21.2	62.7	6.2	2.2	74.4	0.9	72.4	2.2
Inner Sydney	222.9	7.3	13.8	81.1	5.8	2.3	77.0	3.1	74.8	4.8
Inner Western Sydney	97.5	-4.8	7.4	36.6	7.0	2.0	69.3	-3.7	67.4	-3.2
Eastern Suburbs	138.6	2.2	4.2	26.6	2.9	0.6	75.1	-2.5	67.3	1.3
St George-Sutherland	230.3	-3.5	12.6	37.0	5.2	1.5	74.7	-1.1	66.1	-2.0
Canterbury-Bankstown	130.8	-3.4	11.9	39.5	8.3	2.4	62.2	-4.0	56.8	-0.9
Fairfield-Liverpool/ Outer South Western Sydney	273.4	-2.5	26.2	86.8	8.8	4.0	65.7	-2.9	63.4	0.3
Fairfield-Liverpool	158.7	0.7	18.6	87.1	10.5	4.6	60.7	-3.6	62.5	2.7
Outer South Western Sydney	114.6	-6.5	7.6	86.0	6.2	3.0	74.3	-0.9	64.8	-3.3
Central Western Sydney	154.9	3.9	12.8	53.3	7.6	2.3	66.8	2.6	63.1	2.8
North Western Sydney	305.5	3.7	27.0	38.6	8.1	1.9	71.3	0.2	70.4	3.1
Lower Northern Sydney	170.0	0.9	8.0	119.9	4.5	2.4	76.3	0.4	67.7	1.5
Central Northern Sydney	224.5	-2.8	11.0	24.3	4.7	1.0	73.0	-3.6	66.8	-2.2
Northern Beaches	132.1	-4.5	4.9	33.3	3.5	1.0	79.7	-2.4	70.6	-3.0
Gosford-Wyong	131.8	-8.7	10.8	61.1	7.6	3.1	66.8	-5.3	56.7	-4.1
<i>Balance of New South Wales</i>	1164.3	-1.5	88.5	25.7	7.1	1.4	68.1	-1.7	59.8	-0.9
Hunter	285.3	-5.1	18.8	1.6	6.2	0.4	68.4	-4.1	58.9	-3.9
Newcastle	236.7	-8.3	16.6	0.6	6.5	0.5	67.0	-5.8	58.5	-6.0
Illawarra and South Eastern	296.0	3.9	20.5	17.2	6.5	0.7	68.2	0.7	60.8	1.7
Illawarra	186.5	2.2	13.6	-2.0	6.8	-0.3	66.1	1.2	57.9	0.2
Wollongong	128.9	0.0	11.5	20.2	8.2	1.3	66.3	-1.3	60.9	0.0
South Eastern	109.5	6.8	6.9	91.9	5.9	2.5	72.2	-0.5	66.6	4.6
Richmond-Tweed/ Mid-North Coast	221.6	2.9	24.8	80.5	10.1	4.1	61.4	-1.8	55.1	2.8
Northern/ Far West-North Western/ Central West	230.2	-3.3	15.6	7.4	6.4	0.6	71.2	0.4	62.0	-2.1
Murray-Murrumbidgee	131.3	-8.5	8.7	43.8	6.2	2.2	75.3	-3.4	64.7	-5.1
Victoria	2649.3	-0.3	164.9	27.1	5.9	1.2	71.4	-1.7	64.7	-0.6
<i>Melbourne</i>	1991.0	0.2	122.8	27.5	5.8	1.2	72.0	-1.3	65.9	-0.3
Outer Western Melbourne	331.2	1.4	27.9	47.4	7.8	2.3	70.9	-0.7	65.9	0.7
North Western Melbourne	145.7	-1.2	8.2	-16.3	5.3	-0.9	70.1	1.0	61.5	-2.7
Inner Melbourne	205.3	2.1	8.9	48.4	4.2	1.3	77.6	-0.1	74.4	0.0
North Eastern Melbourne	230.6	0.8	12.0	9.4	4.9	0.4	71.8	0.1	64.8	-0.2
Inner Eastern Melbourne	305.4	-0.1	14.8	27.1	4.6	1.0	72.7	-0.7	63.1	0.0
Southern Melbourne	216.2	-3.7	17.0	64.3	7.3	2.9	70.4	-7.2	67.3	-1.3
Outer Eastern Melbourne	218.8	1.9	10.9	44.7	4.8	1.4	76.4	0.1	70.1	1.4
South Eastern Melbourne	207.7	-0.6	16.2	17.1	7.2	1.0	65.8	-3.4	64.5	-1.7
Mornington Peninsula	130.2	0.8	6.9	-5.1	5.0	-0.3	73.6	-0.2	62.2	-0.9
<i>Balance of Victoria</i>	658.3	-1.9	42.1	26.1	6.0	1.3	69.8	-2.7	61.3	-1.2
Barwon-Western District	185.1	-4.7	12.4	138.5	6.3	3.7	71.4	-4.6	63.7	-1.6
Central Highlands-Wimmera	97.2	-0.9	8.0	-0.9	7.6	0.0	67.5	-3.4	64.3	-1.4
Loddon-Mallee	125.6	2.6	9.5	32.4	7.0	1.5	68.7	-3.2	61.9	1.7
Goulburn-Ovens-Murray	131.4	-4.5	6.4	1.7	4.6	0.3	70.1	1.4	56.7	-3.4
All Gippsland	118.9	0.4	5.9	-12.4	4.7	-0.7	69.8	-3.5	60.4	-1.0

(a) The employment rate refers to the proportion of the working age (15-64) population who are employed.

LABOUR FORCE STATUS BY ABS LABOUR FORCE REGION
MARCH QUARTER 2009
Not Seasonally Adjusted

State/Region	Employed		Unemployed		Unemployment rate		Employment Rate (a)		Participation rate	
	'000	Annual change (%)	'000	Annual change (%)	%	Annual change (% pts)	%	Annual change (% pts)	%	Annual change (% pts)
Queensland	2220.6	2.5	125.2	36.1	5.3	1.3	74.1	-0.2	67.8	1.0
<i>Brisbane</i>	<i>1019.4</i>	<i>1.9</i>	<i>50.5</i>	<i>27.1</i>	<i>4.7</i>	<i>0.9</i>	<i>75.3</i>	<i>-0.5</i>	<i>69.6</i>	<i>0.4</i>
Brisbane City Inner Ring	274.3	-0.4	11.7	37.8	4.1	1.1	80.5	-0.7	74.6	-1.0
Brisbane City Outer Ring	311.0	6.0	15.2	25.4	4.6	0.7	75.6	1.7	69.0	3.2
South and East Brisbane Balance	194.7	6.8	12.4	36.5	6.0	1.2	74.9	2.2	72.0	4.0
North Brisbane Balance	165.6	-7.1	7.6	57.7	4.4	1.8	70.5	-4.8	62.2	-5.4
Ipswich City	73.8	3.4	3.7	-30.5	4.7	-2.1	69.5	-5.0	66.7	-0.9
<i>Balance of Queensland</i>	<i>1201.2</i>	<i>3.1</i>	<i>74.7</i>	<i>42.9</i>	<i>5.9</i>	<i>1.6</i>	<i>73.0</i>	<i>0.1</i>	<i>66.4</i>	<i>1.4</i>
Gold Coast	291.7	2.5	17.0	94.5	5.5	2.5	74.6	-0.7	66.7	1.2
Sunshine Coast	149.0	1.3	8.3	20.2	5.3	0.8	70.0	-2.5	60.4	-0.7
West Moreton	36.7	0.1	2.3	86.0	5.8	2.6	66.0	-2.8	64.9	0.5
Wide Bay-Burnett	120.4	-1.5	9.5	18.8	7.3	1.2	64.3	-0.3	56.6	-1.6
Darling Downs-South West	133.3	5.7	2.4	-53.7	1.7	-2.2	78.7	5.9	66.3	1.2
Mackay-Fitzroy-Central West	208.9	3.5	12.9	47.0	5.8	1.7	76.3	-1.8	72.0	2.0
Northern-North West	134.5	10.6	7.1	20.6	5.0	0.4	77.3	3.2	73.4	6.2
Far North	126.8	1.4	15.2	100.2	10.7	5.0	70.3	0.1	70.2	3.2
South Australia	786.8	0.4	53.3	31.0	6.3	1.4	71.6	-0.2	63.6	0.5
<i>Adelaide</i>	<i>568.6</i>	<i>-1.5</i>	<i>44.0</i>	<i>41.3</i>	<i>7.2</i>	<i>2.1</i>	<i>70.1</i>	<i>-1.7</i>	<i>63.1</i>	<i>-0.3</i>
Northern Adelaide	180.5	-1.8	18.0	60.9	9.1	3.3	67.5	-3.1	65.7	0.3
Western Adelaide	98.4	0.8	8.4	39.0	7.9	2.0	69.0	1.1	58.7	1.4
Eastern Adelaide	113.6	-8.2	8.9	99.4	7.3	3.8	70.1	-4.9	60.0	-3.6
Southern Adelaide	176.2	2.2	8.7	-7.8	4.7	-0.5	73.9	0.4	65.3	0.4
<i>Balance of South Australia</i>	<i>218.2</i>	<i>5.8</i>	<i>9.3</i>	<i>-2.6</i>	<i>4.1</i>	<i>-0.3</i>	<i>75.9</i>	<i>4.1</i>	<i>65.2</i>	<i>2.5</i>
Northern and Western SA	74.1	5.9	4.3	-1.0	5.4	-0.4	69.7	3.0	60.6	2.8
Southern and Eastern SA	144.1	5.8	5.1	-3.9	3.4	-0.3	79.5	4.9	67.9	2.3
Western Australia	1161.3	2.0	56.2	38.9	4.6	1.2	75.6	-0.4	69.0	0.3
<i>Perth</i>	<i>874.8</i>	<i>2.8</i>	<i>42.4</i>	<i>41.7</i>	<i>4.6</i>	<i>1.2</i>	<i>76.2</i>	<i>0.0</i>	<i>69.7</i>	<i>0.9</i>
Central Metropolitan	75.9	-2.6	3.2	20.7	4.1	0.8	75.3	-1.3	65.4	-3.1
East Metropolitan	154.3	8.7	4.1	14.2	2.6	0.1	78.0	2.3	71.9	4.1
North Metropolitan	266.9	2.2	13.1	40.9	4.7	1.2	76.7	-0.6	70.3	0.4
South West Metropolitan	178.0	1.6	10.5	39.6	5.6	1.5	74.3	-1.2	68.5	0.2
South East Metropolitan	199.6	2.6	11.4	68.1	5.4	2.0	76.4	0.5	70.2	1.4
<i>Balance of Western Australia</i>	<i>286.6</i>	<i>-0.4</i>	<i>13.9</i>	<i>30.7</i>	<i>4.6</i>	<i>1.1</i>	<i>73.8</i>	<i>-1.6</i>	<i>67.0</i>	<i>-1.2</i>
Lower Western WA	166.3	7.9	7.4	29.8	4.3	0.7	75.2	-0.1	68.7	3.5
Remainder-Balance WA	120.2	-9.9	6.5	31.8	5.1	1.6	71.9	-3.5	64.7	-7.2
Tasmania	238.9	3.6	11.8	-5.5	4.7	-0.4	71.0	1.6	62.1	1.3
Greater Hobart-Southern	119.4	1.0	6.5	20.6	5.1	0.8	70.6	-0.4	62.8	0.5
<i>Greater Hobart</i>	<i>102.3</i>	<i>0.3</i>	<i>5.3</i>	<i>10.0</i>	<i>4.9</i>	<i>0.4</i>	<i>71.2</i>	<i>-1.1</i>	<i>63.0</i>	<i>-0.2</i>
Northern	69.6	9.3	2.1	-42.1	3.0	-2.5	74.2	5.8	62.9	3.2
Mersey-Lyell	49.9	2.6	3.2	-6.9	6.0	-0.6	67.8	1.0	59.5	0.6
Northern Territory	115.4	5.0	5.6	-5.5	4.6	-0.5	74.1	2.3	73.4	1.4
Australian Capital Territory	194.2	0.8	6.1	-0.4	3.0	0.0	78.6	-0.5	72.0	-0.5
AUSTRALIA	10 743.0	0.5	662.3	33.4	5.8	1.4	72.1	-0.9	65.5	0.1
<i>Metropolitan Australia (b)</i>	<i>6768.4</i>	<i>0.4</i>	<i>415.7</i>	<i>38.2</i>	<i>5.8</i>	<i>1.5</i>	<i>72.6</i>	<i>-1.1</i>	<i>66.7</i>	<i>0.1</i>
<i>Non-metropolitan Australia (b)</i>	<i>3974.7</i>	<i>0.8</i>	<i>246.6</i>	<i>25.9</i>	<i>5.8</i>	<i>1.1</i>	<i>71.4</i>	<i>-0.7</i>	<i>63.7</i>	<i>0.1</i>

(a) The employment rate refers to the proportion of the working age (15-64) population who are employed.

(b) The ABS defines metropolitan as those regions located within the State capital cities. Non-metropolitan is defined as those regions located outside the State capital cities as well as the two Territories.

EXPLANATORY NOTES

Introduction

The regional labour market estimates presented in this brochure are three-month averages derived from the Australian Bureau of Statistics (ABS) Monthly Labour Force Survey. These estimates are not adjusted to take account of seasonal and other variations and can exhibit irregular movements. They should therefore be used with caution.

Related information

Users may wish to refer to the DEEWR *Small Area Labour Markets, Australia* publication, which is available, free of charge, at <http://www.workplace.gov.au> (in PDF format), or as a printed booklet upon request. This publication contains quarterly estimates of unemployment rates and levels for approximately 1350 Statistical Local Areas.

Changes in this issue

From the March quarter 2009 onwards, *Australian Regional Labour Markets* will be based on the geographical structure used in the 2006 Census. This has resulted in boundary changes to a small number of regions, particularly in southern Queensland. For further information on these changes, please refer to the ABS Information Paper: *Regional Labour Force Statistics*, February 2009 (Cat. no. 6262.0), which is available, free of charge, at www.abs.gov.au.

Next issue

The next issue of *Australian Regional Labour Markets*, for the June quarter 2009, is expected to be released in late July 2009.

Contact details

This brochure was prepared by the Economic, Labour Market and Education Analysis Branch, Department of Education, Employment and Workplace Relations, Canberra. For further information on this brochure or related statistics, contact Kellie Gavin in the Labour Market Analysis Section on (02) 6121 3538 or email Kellie.Gavin@deewr.gov.au.

More detailed monthly national, State and regional labour force statistics are available from the ABS. For further information on ABS labour force statistics, go to the 'Labour' theme page at the ABS website (www.abs.gov.au), or contact the ABS Labour Force Survey area on (02) 6252 6525.