

LABOUR MARKET AND RELATED PAYMENTS

a monthly profile

Note: The Australian Bureau of Statistics (ABS) produces the official unemployment statistics. The figures contained in this publication are different from the ABS unemployment figures as the ABS and the Department of Employment and Workplace Relations (DEWR) use different definitions to identify the unemployed and different methods of counting (see the Appendix for more information).

This publication was produced previously by the Department of Families, Community Services and Indigenous Affairs (FaCSIA) and since October 2004 by DEWR.

This publication can be found at <http://www.workplace.gov.au/lmrp>

August 2007

Embargoed
Until 11.30 am, 19 September 2007

Annual Subscription - \$65.00

CONTENTS

	<i>Page</i>
Introduction	1
Statistical Highlights	2
Tables	
1. Labour Market Payments - Time Series	3
2. Newstart Allowees - Derivation of the job seeker population	4
3. Youth Allowees (other) - Derivation of the job seeker population	5
4. Job seekers receiving Newstart Allowance and Youth Allowance (other) - Time Series	6
5. Job seekers receiving Newstart Allowance and Youth Allowance (other) by State	7
6. Job seekers receiving Newstart Allowance and Youth Allowance (other) by Age and Sex	8
7. Job seekers receiving Newstart Allowance and Youth Allowance (other) by Area Support Office and Customer Service Centre	9
8. Job seekers receiving Newstart Allowance and Youth Allowance (other) by Fortnightly Earnings and Sex	23
Explanatory Notes	24
Glossary	30
Appendix	33
For More Information	36

INTRODUCTION

This publication presents statistical information on a monthly basis for the various types of labour market payments delivered by Centrelink largely on behalf of the Department of Employment and Workplace Relations (DEWR).

After the Machinery of Government (MOG) changes, announced in October 2004, responsibility for Newstart Allowance (NSA), Youth Allowance (other) (YA(o)), Mature Age Allowance (MAA), Partner Allowance (PA) and Widow Allowance (WA) was transferred to DEWR and responsibility for Youth Allowance (full-time students) (YA(FTS)) was transferred to the Department of Education, Science and Training (DEST).

This publication covers NSA and YA(o) in some detail and, to a lesser extent, MAA, PA, WA, YA(FTS) and YA (Australian Apprentices).

Table 1 provides information on the total number of NSA and YA recipients. The YA population is broken down into YA(o), YA(FTS) and YA(Australian Apprentices) categories. The total numbers of MAA, PA and WA recipients are also provided in this table.

Tables 2 and 3 show the derivation of the NSA and YA(o) job seeker populations (see the reference to job seekers in the 'Comparability of data' section of the *Explanatory Notes*). These populations are added together to derive the total number of job seekers.

Tables 4 to 8 provide information on the total job seeker population.

When using time series figures, it is important to note that changes have occurred over time to the conditions of eligibility for different payments. Details of these changes are provided in the *Explanatory Notes*.

All media inquiries should be directed to the Centrelink National Media Officer on (02) 6284 6442. For more general inquiries regarding further statistical information please refer to the last page of this publication for other contact details.

The next issue of this publication is scheduled for release on 24 October 2007.

STATISTICAL HIGHLIGHTS – August 2007

Between August 2006 and August 2007:

Total Newstart Allowance (NSA) recipients and Youth Allowance (other) (YA(o)) recipients **decreased by 7.2%** overall from 545,082 to 505,829 and

- ◆ decreased 6.4% for NSA from 472,448 to 442,112 and
- ◆ decreased 12.3% for YA(o) from 72,634 to 63,717.

The number of job seekers **decreased by 15.5%** overall from 369,834 to 312,540 and

- ◆ decreased 15.8% for NSA recipients from 312,816 to 263,365 and
- ◆ decreased 13.8% for YA(o) recipients from 57,018 to 49,175.

Long-term job seekers decreased by 17.7% from 207,905 to 171,107.

Short-term job seekers decreased by 12.7% from 161,929 to 141,433.

For comparisons between DEWR unemployment labour market payment numbers and ABS labour force unemployment statistics, see Appendix.

**Newstart Allowance and Youth Allowance (other)
August 2005 to August 2007**

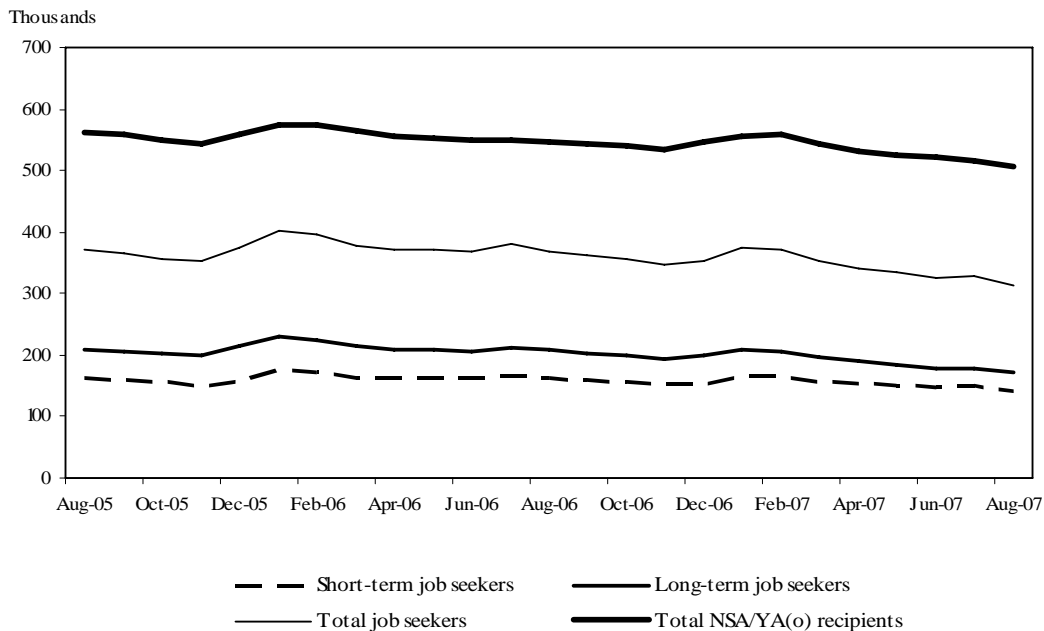


TABLE 1 - LABOUR MARKET PAYMENTS - TIME SERIES (a)

	Newstart Allowance		Youth Allowance			Mature Age Allowance	Partner Allowance	Widow Allowance
	Long-term (b)	Total	Other	Full-time Students (c)	Australian Apprentices (d)			
February 1994 (e)	472,785	977,796
August 2005	291,607	485,823	77,459	285,864	1,655	19,462	70,365	45,009
September 2005	289,974	482,072	76,272	288,479	2,285	18,697	69,624	45,158
October 2005	287,468	475,490	72,915	280,308	2,416	17,939	68,919	45,287
November 2005	286,345	470,557	73,576	274,547	2,471	17,335	68,420	45,538
December 2005	290,391	476,028	84,022	233,273	2,486	16,623	67,762	45,830
January 2006	294,100	487,251	85,628	223,059	2,478	15,869	66,905	45,849
February 2006	294,250	491,955	83,559	232,189	2,731	15,111	65,681	45,760
March 2006	291,020	484,784	78,913	250,079	2,994	14,271	64,282	45,622
April 2006	288,017	479,378	76,747	260,349	3,190	13,547	62,924	45,438
May 2006	285,853	475,830	75,533	266,392	3,181	12,836	61,863	45,212
June 2006	284,288	474,125	75,366	270,081	3,323	12,110	60,829	45,096
July 2006	285,152	474,477	76,173	264,863	3,376	11,379	59,401	44,639
August 2006	284,943	472,448	72,634	271,591	3,472	10,731	58,213	44,184
September 2006	285,218	472,222	71,104	276,235	3,643	10,049	56,965	43,705
October 2006	284,276	470,340	69,511	277,061	3,740	9,430	55,683	43,349
November 2006	282,694	466,631	68,721	267,042	3,683	8,892	54,611	43,112
December 2006	284,499	469,233	76,480	226,902	3,571	8,293	53,398	42,903
January 2007	286,614	478,033	77,358	216,869	3,487	7,745	52,205	42,530
February 2007	286,113	481,343	76,036	223,780	3,715	7,287	51,251	42,370
March 2007	281,937	473,278	71,619	239,502	4,087	6,751	50,058	42,032
April 2007	277,688	463,732	68,746	250,660	4,250	6,235	48,912	41,619
May 2007	274,568	458,297	67,973	256,805	4,341	5,790	47,896	41,245
June 2007	271,439	452,733	67,852	261,197	4,435	5,284	46,709	40,886
July 2007	269,816	448,833	67,617	256,808	4,416	4,796	45,917	40,735
August 2007	267,972	442,112	63,717	263,166	4,490	4,381	45,459	40,853
<i>Variation July 2007 - August 2007</i>								
Number	-1,844	-6,721	-3,900	6,358	74	-415	-458	118
Per cent	-0.7	-1.5	-5.8	2.5	1.7	-8.7	-1.0	0.3

(a) This table presents data using the revised method of measuring the number of people receiving labour market payments introduced in July 2002. Revised historical data from May 1998 to June 2002 is in Table A (May 1998 - June 2000) and Table 1 (July 2000 - July 2002) of July 2002 publication.

(b) Long-term Newstart allowees are persons who have been receiving income support for 12 months or more.

(c) The number of full time students does not include those who have traded in their entire Youth Allowance entitlement for a loan under the Student Financial Supplement Loan Scheme. The Government announced on 24 April 2003 that no further loans would be issued under this Scheme from 1 January 2004. For further details, refer to the Explanatory Notes at the back of this publication.

(d) Australian Apprenticeships combine employment with structured training to provide a nationally recognised qualification. Australian Apprentices enter formal agreements known as either 'Training Agreements' or 'Contracts of Training' which set out the relationship between the employer and the Australian Apprentice and their respective rights and responsibilities.

(e) February 1994 data has been included for comparison purposes due to the peak in the number of persons receiving JSA/NSA at this point in time.

Notes:

- Most of the figures in this publication are averages and have been rounded. As a result, discrepancies may occur between sums of component items and totals, and in the calculation of variations.

TABLE 2 - NEWSTART ALLOWEES - DERIVATION OF THE JOB SEEKER POPULATION

	July 2007	August			Variation July - August	
		Males	Females	Persons	Number	Per cent
Short-term NSA Customers	179,017	112,743	61,397	174,140	-4,877	-2.7
CPS recipients (a)	3,098	2,169	863	3,032	-66	-2.1
Did not receive a payment (b)	9,811	5,864	4,323	10,187	376	3.8
Received a payment	166,108	104,710	56,211	160,921	-5,187	-3.1
Incapacitated (c)	17,115	10,148	6,618	16,766	-349	-2.0
Training	10,423	6,823	4,195	11,018	595	5.7
Self-employment development (d)	456	322	198	520	64	14.0
Voluntary/part-time work (e)	3,265	1,394	1,978	3,372	107	3.3
Other/temporary exemptions (f)	12,352	7,418	5,164	12,582	230	1.9
Short-term NSA job seekers (g)	122,497	78,605	38,058	116,663	-5,834	-4.8
Long-term NSA Customers	269,816	163,076	104,896	267,972	-1,844	-0.7
CPS recipients (a)	7,643	5,184	2,467	7,651	8	0.1
Did not receive a payment (b)	8,855	5,209	4,397	9,606	751	8.5
Received a payment	253,318	152,683	98,032	250,715	-2,603	-1.0
Incapacitated (c)	20,094	10,998	8,768	19,766	-328	-1.6
Training	47,503	30,204	18,200	48,404	901	1.9
Self-employment development (d)	225	170	88	258	33	14.7
Voluntary/part-time work (e)	10,083	6,087	4,536	10,623	540	5.4
Other/temporary exemptions (f)	23,294	15,176	9,786	24,962	1,668	7.2
Long-term NSA job seekers (g)	152,119	90,048	56,654	146,702	-5,417	-3.6
All NSA Customers (h)	448,833	275,819	166,293	442,112	-6,721	-1.5
CPS recipients (a)	10,741	7,353	3,330	10,683	-58	-0.5
Did not receive a payment (b)	18,666	11,073	8,720	19,793	1,127	6.0
Received a payment	419,426	257,393	154,243	411,636	-7,790	-1.9
Incapacitated (c)	37,209	21,146	15,386	36,532	-677	-1.8
Training	57,926	37,027	22,395	59,422	1,496	2.6
Self-employment development (d)	681	492	286	778	97	14.2
Voluntary/part-time work (e)	13,348	7,481	6,514	13,995	647	4.8
Other/temporary exemptions (f)	35,646	22,594	14,950	37,544	1,898	5.3
All NSA job seekers (g)	274,616	168,653	94,712	263,365	-11,251	-4.1

(a) Persons with NSA eligibility who received CDEP Participant Supplement or add ons while participating in CDEP Projects.

(b) Persons who did not receive a payment due to their income and/or that of their partner. This group is often referred to as zero-paid.

(c) Activity code "incapacitated" relates to NSA recipients who have become temporarily ill or incapacitated.

(d) Those customers exempted from job search while they develop self-employment opportunities.

(e) Those customers undertaking approved full-time voluntary work or combinations of voluntary and part-time work who are not required to seek work.

(f) Includes other customers known not to have job search obligations. See 'Job seekers' in Explanatory Notes.

(g) Those customers who received a payment and generally are required to search for work. These customers form the basis of the population group in Tables 4 - 7.

(h) On 1 July 2006, the Australian Government introduced the Welfare to Work reforms. These reforms impact on the NSA population.

Notes:

- For information on short-term and long-term categories please refer to the Glossary.

- Most of the figures in this publication are averages and have been rounded. As a result, discrepancies may occur between sums of component items and totals, and in the calculation of variations.

TABLE 3 - YOUTH ALLOWEES (OTHER) - DERIVATION OF THE JOB SEEKER POPULATION

	July 2007	August			Variation July - August	
		Males	Females	Persons	Number	Per cent
Short-term YA (other) Customers	33,492	16,927	14,687	31,614	-1,878	-5.6
CPS recipients (a)	1,474	907	539	1,446	-28	-1.9
Did not receive a payment (b)	684	324	335	659	-25	-3.7
Received a payment	31,334	15,696	13,813	29,509	-1,825	-5.8
Part-time study & work (c)	1	0	2	2	1	100.0
Part-time study & other YA activities (d)	72	24	53	77	5	6.9
Incapacitated (e)	1,705	781	836	1,617	-88	-5.2
Training	1,246	805	520	1,325	79	6.3
Self-employment development (e)	8	5	5	10	2	25.0
Full-time voluntary work	0	0	0	0	0	0.0
Other non-jobseekers (e)	1,756	739	969	1,708	-48	-2.7
Short-term YA (other) job seekers (f)	26,546	13,342	11,428	24,770	-1,776	-6.7
Long-term YA (other) Customers	34,125	15,177	16,926	32,103	-2,022	-5.9
CPS recipients (a)	1,230	754	440	1,194	-36	-2.9
Did not receive a payment (b)	943	413	528	941	-2	-0.2
Received a payment	31,952	14,010	15,958	29,968	-1,984	-6.2
Part-time study & work (c)	2	0	1	1	-1	-50.0
Part-time study & other YA activities (d)	56	23	33	56	0	0.0
Incapacitated (e)	1,340	446	778	1,224	-116	-8.7
Training	2,747	1,473	1,311	2,784	37	1.3
Self-employment development (e)	7	2	5	7	0	0.0
Full-time voluntary work	0	0	0	0	0	0.0
Other non-jobseekers (e)	1,452	596	895	1,491	39	2.7
Long-term YA (other) job seekers (f)	26,348	11,470	12,935	24,405	-1,943	-7.4
All YA (other) Customers (g)	67,617	32,104	31,613	63,717	-3,900	-5.8
CPS recipients (a)	2,704	1,661	979	2,640	-64	-2.4
Did not receive a payment (b)	1,627	737	863	1,600	-27	-1.7
Received a payment	63,286	29,706	29,771	59,477	-3,809	-6.0
Part-time study & work (c)	3	0	3	3	0	0.0
Part-time study & other YA activities (d)	128	47	86	133	5	3.9
Incapacitated (e)	3,045	1,227	1,614	2,841	-204	-6.7
Training	3,993	2,278	1,831	4,109	116	2.9
Self-employment development (e)	15	7	10	17	2	13.3
Full-time voluntary work	0	0	0	0	0	0.0
Other non-jobseekers (e)	3,208	1,335	1,864	3,199	-9	-0.3
All YA (other) job seekers (f)	52,894	24,812	24,363	49,175	-3,719	-7.0

(a) Persons with YA eligibility who received CDEP Participant Supplement or add ons while participating in CDEP projects.

(b) Persons who did not receive a payment due to their own income and/or that of their partner or parents, where applicable. This group is often referred to as zero-paid.

(c) Those customers undertaking approved part-time study and work who are considered to have a full activity load and are not required to seek work.

(d) Those customers undertaking approved part-time study and other activities who are considered to have a full activity load and are not required to seek work.

(e) These categories are defined in the same way as in Table 2, except that those customers combining these activities with part-time study are classified under part-time study and other activities.

(f) Those customers who received a payment and generally are required to search for work. These customers form the basis of the population group in Tables 4 - 7.

(g) On 1 July 2006, the Australian Government introduced the Welfare to Work reforms. These reforms impact on the YA(o) population.

Notes:

- For information on short-term and long-term categories please refer to the Glossary.

- Most of the figures in this publication are averages and have been rounded. As a result, discrepancies may occur between sums of component items and totals, and in the calculation of variations.

TABLE 4 - JOB SEEKERS RECEIVING NEWSTART ALLOWANCE AND YOUTH ALLOWANCE (OTHER)
TIME SERIES (a)

	Short-term	Long-term	Total
August 2005	162,525	209,424	371,949
September 2005	159,378	205,254	364,632
October 2005	155,525	201,678	357,203
November 2005	151,863	200,077	351,940
December 2005	157,829	215,881	373,710
January 2006	173,502	229,230	402,732
February 2006	173,305	224,048	397,353
March 2006	164,016	214,293	378,309
April 2006	161,900	209,435	371,335
May 2006	162,182	207,935	370,117
June 2006	162,331	205,212	367,543
July 2006	165,898	213,281	379,179
August 2006	161,929	207,905	369,834
September 2006	159,462	203,024	362,486
October 2006	156,815	198,967	355,782
November 2006	152,125	193,719	345,844
December 2006	153,342	201,044	354,386
January 2007	165,924	209,395	375,319
February 2007	165,581	205,384	370,965
March 2007	157,827	195,351	353,178
April 2007	153,350	188,871	342,221
May 2007	151,083	183,234	334,317
June 2007	148,602	177,562	326,164
July 2007	149,043	178,467	327,510
August 2007	141,433	171,107	312,540
<i>Variation July 2007 - August 2007</i>			
Number	-7,610	-7,360	-14,970
Per cent	-5.1	-4.1	-4.6

(a) This table presents data using the revised method of measuring the number of people receiving labour market payment introduced in July 2002. Revised historical data from May 1998 to June 2002 is in Table B of July 2002 publication.

Notes:

- For information on short-term and long-term categories please refer to the Glossary.

- Most of the figures in this publication are averages and have been rounded. As a result, discrepancies may occur between sums of component items and totals, and in the calculation of variations.

**TABLE 5 - JOB SEEKERS RECEIVING NEWSTART ALLOWANCE AND YOUTH ALLOWANCE (OTHER)
BY STATE**

<i>State</i>	July 2007	August 2007	Variation	
			July - August Number	Per cent
SHORT-TERM JOB SEEKERS				
New South Wales	53,632	50,430	-3,202	-6.0
Victoria	35,536	33,710	-1,826	-5.1
Queensland	29,429	27,580	-1,849	-6.3
South Australia	12,729	12,229	-500	-3.9
Western Australia	10,644	10,460	-184	-1.7
Tasmania	4,305	4,263	-42	-1.0
Northern Territory	1,689	1,705	16	0.9
Australian Capital Territory	1,079	1,056	-23	-2.1
AUSTRALIA	149,043	141,433	-7,610	-5.1
LONG-TERM JOB SEEKERS				
New South Wales	66,534	63,734	-2,800	-4.2
Victoria	45,418	43,483	-1,935	-4.3
Queensland	27,368	25,999	-1,369	-5.0
South Australia	16,493	15,853	-640	-3.9
Western Australia	10,424	10,078	-346	-3.3
Tasmania	7,755	7,507	-248	-3.2
Northern Territory	3,138	3,183	45	1.4
Australian Capital Territory	1,337	1,270	-67	-5.0
AUSTRALIA	178,467	171,107	-7,360	-4.1
TOTAL JOB SEEKERS				
New South Wales	120,166	114,164	-6,002	-5.0
Victoria	80,954	77,193	-3,761	-4.6
Queensland	56,797	53,579	-3,218	-5.7
South Australia	29,222	28,082	-1,140	-3.9
Western Australia	21,068	20,538	-530	-2.5
Tasmania	12,060	11,770	-290	-2.4
Northern Territory	4,827	4,888	61	1.3
Australian Capital Territory	2,416	2,326	-90	-3.7
AUSTRALIA	327,510	312,540	-14,970	-4.6

Notes:

- Most of the figures in this publication are averages and have been rounded. As a result, discrepancies may occur between sums of component items and totals, and in the calculation of variations.

**TABLE 6 - JOB SEEKERS RECEIVING NEWSTART ALLOWANCE AND YOUTH ALLOWANCE (OTHER)
BY AGE AND SEX, AS AT AUGUST 2007**

Age	Short-term job seekers		Long-term job seekers		Total job seekers	
	Number	Per cent	Number	Per cent	Number	Per cent
MALES						
Less than 18 years	4,247	4.6	2,117	2.1	6,364	3.3
18 - 20 years	9,094	9.9	9,351	9.2	18,445	9.5
21 - 24 years	15,259	16.6	12,023	11.8	27,282	14.1
25 - 29 years	14,589	15.9	12,354	12.2	26,943	13.9
30 - 39 years	22,039	24.0	21,688	21.4	43,727	22.6
40 - 49 years	14,206	15.5	18,347	18.1	32,553	16.8
50 - 59 years	8,983	9.8	16,426	16.2	25,409	13.1
60 years and over	3,530	3.8	9,211	9.1	12,741	6.6
Total	91,947	100.0	101,517	100.0	193,464	100.0
FEMALES						
Less than 18 years	4,465	9.0	2,765	4.0	7,230	6.1
18 - 20 years	6,962	14.1	10,168	14.6	17,130	14.4
21 - 24 years	8,019	16.2	8,617	12.4	16,636	14.0
25 - 29 years	5,041	10.2	5,814	8.4	10,855	9.1
30 - 39 years	7,798	15.8	10,039	14.4	17,837	15.0
40 - 49 years	8,755	17.7	14,477	20.8	23,232	19.5
50 - 59 years	6,699	13.5	13,722	19.7	20,421	17.1
60 years and over	1,747	3.5	3,988	5.7	5,735	4.8
Total	49,486	100.0	69,590	100.0	119,076	100.0
PERSONS						
Less than 18 years	8,712	6.2	4,882	2.9	13,594	4.3
18 - 20 years	16,056	11.4	19,519	11.4	35,575	11.4
21 - 24 years	23,278	16.5	20,640	12.1	43,918	14.1
25 - 29 years	19,630	13.9	18,168	10.6	37,798	12.1
30 - 39 years	29,837	21.1	31,727	18.5	61,564	19.7
40 - 49 years	22,961	16.2	32,824	19.2	55,785	17.8
50 - 59 years	15,682	11.1	30,148	17.6	45,830	14.7
60 years and over	5,277	3.7	13,199	7.7	18,476	5.9
Total	141,433	100.0	171,107	100.0	312,540	100.0

**TABLE 7 - JOB SEEKERS RECEIVING NEWSTART ALLOWANCE AND YOUTH ALLOWANCE
(OTHER) BY AREA SUPPORT OFFICE AND CUSTOMER SERVICE CENTRE**

<i>Area Support Office and Customer Service Centre</i>	July 2007	August 2007	Variation July - August	
			Number	Per cent
<i>SYDNEY EAST NEW SOUTH WALES</i>				
Bankstown	3,625	3,462	-163	-4.5
Bondi Junction	1,029	969	-60	-5.8
Burwood	1,421	1,394	-27	-1.9
Campsie	2,368	2,299	-69	-2.9
Caringbah	1,028	939	-89	-8.7
Chatswood	860	784	-76	-8.8
Corrimal	1,163	1,101	-62	-5.3
Dapto	1,092	1,034	-58	-5.3
Darlinghurst	1,401	1,338	-63	-4.5
Darlinghurst CCU	33	27	-6	%
Haymarket	3	1	-2	%
Hornsby	778	698	-80	-10.3
Hurstville	1,249	1,171	-78	-6.2
Lakemba	48	45	-3	%
Leichhardt	1,262	1,188	-74	-5.9
Maroubra	1,224	1,137	-87	-7.1
Marrickville	1,325	1,253	-72	-5.4
Northern Beaches	911	862	-49	-5.4
Participation Sydney East	10	9	-1	%
Redfern	1,190	1,146	-44	-3.7
Revesby	4	5	1	%
Rockdale	1,273	1,177	-96	-7.5
Ryde	834	754	-80	-9.6
Shellharbour	1,422	1,322	-100	-7.0
Sutherland	400	426	26	6.5
Wollongong	1,425	1,379	-46	-3.2
Other (a)	18	18	0	%
Total	27,396	25,938	-1,458	-5.3

Note: For footnotes see end of table.

**TABLE 7 - JOB SEEKERS RECEIVING NEWSTART ALLOWANCE AND YOUTH ALLOWANCE
(OTHER) BY AREA SUPPORT OFFICE AND CUSTOMER SERVICE CENTRE**

<i>Area Support Office and Customer Service Centre</i>	July 2007	August 2007	Variation	
			July - August Number	Per cent
<i>SYDNEY WEST NEW SOUTH WALES</i>				
Auburn	2,047	1,902	-145	-7.1
Baulkham Hills	581	532	-49	-8.4
Blacktown	2,750	2,620	-130	-4.7
Cabramatta	1,877	1,775	-102	-5.4
Camden	610	582	-28	-4.6
Campbelltown	2,341	2,260	-81	-3.5
Fairfield	3,179	2,918	-261	-8.2
Hawkesbury	849	783	-66	-7.8
Ingleburn	1,271	1,181	-90	-7.1
Katoomba	619	603	-16	-2.6
Liverpool	3,524	3,321	-203	-5.8
Merrylands	1,694	1,634	-60	-3.5
Mt Druitt	2,605	2,440	-165	-6.3
Parramatta	1,644	1,553	-91	-5.5
Penrith	1,695	1,566	-129	-7.6
Springwood	379	346	-33	-8.7
St Marys	1,630	1,545	-85	-5.2
Other (a)	35	31	-4	%
Total	29,330	27,592	-1,738	-5.9

Note: For footnotes see end of table.

**TABLE 7 - JOB SEEKERS RECEIVING NEWSTART ALLOWANCE AND YOUTH ALLOWANCE
(OTHER) BY AREA SUPPORT OFFICE AND CUSTOMER SERVICE CENTRE**

<i>Area Support Office and Customer Service Centre</i>	July 2007	August 2007	Variation July - August	
			Number	Per cent
HUNTER NEW SOUTH WALES				
Armidale	1,245	1,062	-183	-14.7
Cessnock	880	835	-45	-5.1
Charlestown	1,953	1,825	-128	-6.6
Ettalong	911	876	-35	-3.8
Glen Innes	0	107	107	%
Gosford	1,519	1,358	-161	-10.6
Gunnedah	447	427	-20	-4.5
Inverell	713	675	-38	-5.3
Kempsey	1,188	1,165	-23	-1.9
Kurri Kurri	534	518	-16	-3.0
Lakehaven	1,599	1,522	-77	-4.8
Maitland	1,652	1,551	-101	-6.1
Mayfield	1,156	1,080	-76	-6.6
Muswellbrook	558	511	-47	-8.4
Nambucca Heads	1,034	1,010	-24	-2.3
Nelson Bay	584	557	-27	-4.6
Newcastle	1,405	1,323	-82	-5.8
Port Macquarie	1,768	1,701	-67	-3.8
Raymond Terrace	998	953	-45	-4.5
Singleton	300	269	-31	-10.3
Tamworth	1,716	1,697	-19	-1.1
Taree	1,779	1,705	-74	-4.2
The Entrance	1,373	1,303	-70	-5.1
Toronto	1,037	988	-49	-4.7
Tuncurry (Forster)	918	876	-42	-4.6
Wallsend	1,634	1,557	-77	-4.7
Wyong	687	687	0	0.0
Other (a)	18	16	-2	%
Total	29,606	28,154	-1,452	-4.9

Note: For footnotes see end of table.

**TABLE 7 - JOB SEEKERS RECEIVING NEWSTART ALLOWANCE AND YOUTH ALLOWANCE
(OTHER) BY AREA SUPPORT OFFICE AND CUSTOMER SERVICE CENTRE**

<i>Area Support Office and Customer Service Centre</i>	July 2007	August 2007	Variation	
			July - August Number	Per cent
<i>SOUTH WEST NEW SOUTH WALES</i>				
Batemans Bay	961	911	-50	-5.2
Bathurst	980	958	-22	-2.2
Bega	763	762	-1	-0.1
Belconnen	728	699	-29	-4.0
Bowral	553	528	-25	-4.5
Braddon	687	683	-4	-0.6
Cooma	328	283	-45	-13.7
Cowra	499	468	-31	-6.2
Dubbo	1,908	1,921	13	0.7
Goulburn	800	722	-78	-9.8
Griffith	576	537	-39	-6.8
Gungahlin	67	66	-1	%
Lanyon	34	32	-2	%
Leeton	349	337	-12	-3.4
Lithgow	685	663	-22	-3.2
Mudgee	684	681	-3	-0.4
Narooma	409	395	-14	-3.4
Nowra	2,126	2,050	-76	-3.6
Orange	1,088	1,039	-49	-4.5
Parkes	1,023	989	-34	-3.3
Queanbeyan	438	420	-18	-4.1
Tuggeranong	468	433	-35	-7.5
Tumut	337	324	-13	-3.9
Ulladulla	568	552	-16	-2.8
Wagga	1,702	1,662	-40	-2.4
Woden	413	382	-31	-7.5
Yass	118	115	-3	-2.5
Young	448	419	-29	-6.5
Other (a)	17	18	1	%
Total	19,757	19,049	-708	-3.6

Note: For footnotes see end of table.

**TABLE 7 - JOB SEEKERS RECEIVING NEWSTART ALLOWANCE AND YOUTH ALLOWANCE
(OTHER) BY AREA SUPPORT OFFICE AND CUSTOMER SERVICE CENTRE**

<i>Area Support Office and Customer Service Centre</i>	July 2007	August 2007	Variation July - August	
			Number	Per cent
<i>NORTH CENTRAL VICTORIA</i>				
Airport West	1,040	965	-75	-7.2
Albury	2,259	2,158	-101	-4.5
Box Hill	1,545	1,517	-28	-1.8
Broadmeadows	3,415	3,219	-196	-5.7
Camberwell	864	825	-39	-4.5
Darebin	3,264	3,057	-207	-6.3
Deniliquin	331	303	-28	-8.5
Echuca	565	537	-28	-5.0
Epping	1,604	1,469	-135	-8.4
Greensborough	1,392	1,294	-98	-7.0
Heidelberg	49	36	-13	%
Moreland	1,992	1,898	-94	-4.7
Newmarket	1,379	1,304	-75	-5.4
Seymour	612	598	-14	-2.3
Shepparton	2,131	2,051	-80	-3.8
South Melbourne	659	595	-64	-9.7
Sunbury	708	670	-38	-5.4
Wangaratta	1,638	1,552	-86	-5.3
Windsor	2,247	2,112	-135	-6.0
Yarra	1,822	1,711	-111	-6.1
Other (a)	34	30	-4	%
Total	29,550	27,901	-1,649	-5.6

Note: For footnotes see end of table.

**TABLE 7 - JOB SEEKERS RECEIVING NEWSTART ALLOWANCE AND YOUTH ALLOWANCE
(OTHER) BY AREA SUPPORT OFFICE AND CUSTOMER SERVICE CENTRE**

<i>Area Support Office and Customer Service Centre</i>	July 2007	August 2007	Variation July - August	
			Number	Per cent
<i>SOUTH EAST VICTORIA</i>				
Bairnsdale	900	879	-21	-2.3
Belgrave	440	406	-34	-7.7
Cheltenham	1,450	1,366	-84	-5.8
Cranbourne	1,092	1,039	-53	-4.9
Dandenong	2,459	2,351	-108	-4.4
Fountain Gate	1,734	1,610	-124	-7.2
Frankston	2,349	2,281	-68	-2.9
Glen Waverley	853	815	-38	-4.5
Hastings	549	528	-21	-3.8
Lilydale	1,487	1,438	-49	-3.3
Mornington	466	458	-8	-1.7
Morwell	2,191	2,183	-8	-0.4
Oakleigh	1,612	1,496	-116	-7.2
Pakenham	495	491	-4	-0.8
Ringwood	1,390	1,319	-71	-5.1
Rosebud	871	851	-20	-2.3
Rowville	367	348	-19	-5.2
Sale	781	756	-25	-3.2
Springvale	1,952	1,828	-124	-6.4
Wantirna	1,166	1,088	-78	-6.7
Warragul	472	470	-2	-0.4
Wonthaggi	604	567	-37	-6.1
Other (a)	11	12	1	%
Total	25,691	24,580	-1,111	-4.3

Note: For footnotes see end of table.

**TABLE 7 - JOB SEEKERS RECEIVING NEWSTART ALLOWANCE AND YOUTH ALLOWANCE
(OTHER) BY AREA SUPPORT OFFICE AND CUSTOMER SERVICE CENTRE**

<i>Area Support Office and Customer Service Centre</i>	July 2007	August 2007	Variation July - August	
			Number	Per cent
WEST VICTORIA				
Ararat	280	261	-19	-6.8
Ballarat	2,478	2,322	-156	-6.3
Bendigo	2,522	2,448	-74	-2.9
Bendigo Central	386	376	-10	-2.6
Colac	479	478	-1	-0.2
Corio	1,695	1,609	-86	-5.1
Footscray	1,476	1,416	-60	-4.1
Geelong	2,929	2,820	-109	-3.7
Hamilton	435	407	-28	-6.4
Horsham	709	674	-35	-4.9
Maryborough	459	459	0	0.0
Melton	1,095	1,031	-64	-5.8
Mildura	1,676	1,603	-73	-4.4
Newport	1,038	983	-55	-5.3
Portland	422	416	-6	-1.4
Stawell	197	192	-5	-2.5
Sunshine	2,777	2,642	-135	-4.9
Swan Hill	853	810	-43	-5.0
Warrnambool	898	887	-11	-1.2
Watergardens	3,129	3,017	-112	-3.6
Werribee	2,275	2,230	-45	-2.0
Other (a)	3	2	-1	%
Total	28,211	27,083	-1,128	-4.0

Note: For footnotes see end of table.

**TABLE 7 - JOB SEEKERS RECEIVING NEWSTART ALLOWANCE AND YOUTH ALLOWANCE
(OTHER) BY AREA SUPPORT OFFICE AND CUSTOMER SERVICE CENTRE**

<i>Area Support Office and Customer Service Centre</i>	July 2007	August 2007	Variation	
			July - August Number	Per cent
<i>CENTRAL & NORTHERN QUEENSLAND</i>				
Atherton	569	538	-31	-5.4
Ayr	346	291	-55	-15.9
Bamaga RASC (Nth Peninsula RASC)	27	26	-1	%
Biloela	135	131	-4	-3.0
Bowen	346	295	-51	-14.7
Cairns Families	11	12	1	%
Cairns Jobseekers	2,368	2,230	-138	-5.8
Cairns Remote (Indigenous ISC)	555	538	-17	-3.1
Cairns Seniors & Carers	3	2	-1	%
Charters Towers	265	248	-17	-6.4
Edmonton	0	0	0	%
Emerald	242	219	-23	-9.5
Gladstone	780	743	-37	-4.7
Greenfields	5	4	-1	%
Ingham	281	224	-57	-20.3
Innisfail	537	488	-49	-9.1
Longreach	73	77	4	%
Mackay Jobseekers	1,269	1,133	-136	-10.7
Mackay Seniors & Carers	2	3	1	%
Mareeba	422	431	9	2.1
Mossman	305	287	-18	-5.9
Mt Isa	659	623	-36	-5.5
Normanton	121	119	-2	-1.7
Palm Island	261	266	5	1.9
Rockhampton Families	9	8	-1	%
Rockhampton Jobseekers	1,588	1,549	-39	-2.5
Rockhampton Seniors & Carers	4	4	0	%
Smithfield	0	1	1	%
Thursday Island	146	157	11	7.5
Townsville City	1	2	1	%
Townsville Families	7	6	-1	%
Townsville Jobseekers	2,429	2,237	-192	-7.9
Townsville Seniors & Carers	2	2	0	%
Western Cape RASC	149	143	-6	-4.0
Whitsunday	334	294	-40	-12.0
Yarrabah RASC	263	291	28	10.6
Yeppoon	286	279	-7	-2.4
Other (a)	43	37	-6	%
Total	14,843	13,938	-905	-6.1

Note: For footnotes see end of the table.

**TABLE 7 - JOB SEEKERS RECEIVING NEWSTART ALLOWANCE AND YOUTH ALLOWANCE
(OTHER) BY AREA SUPPORT OFFICE AND CUSTOMER SERVICE CENTRE**

<i>Area Support Office and Customer Service Centre</i>	July 2007	August 2007	Variation July - August	
			Number	Per cent
<i>SOUTH & EAST QUEENSLAND</i>				
Bundaberg	2,595	2,514	-81	-3.1
Caboolture	1,714	1,614	-100	-5.8
Caboolture FCC and SC&R	0	0	0	%
Caloundra	953	908	-45	-4.7
Cherbourg	10	20	10	%
Chermside	842	803	-39	-4.6
Fortitude Valley	1,002	942	-60	-6.0
Gympie	1,112	1,052	-60	-5.4
Hervey Bay	1,115	1,050	-65	-5.8
Kawana Waters	437	408	-29	-6.6
Kingaroy	801	755	-46	-5.7
Kippa-Ring	1,253	1,147	-106	-8.5
Maroochydore	1,231	1,126	-105	-8.5
Maryborough	1,107	1,076	-31	-2.8
Mitchelton	711	642	-69	-9.7
Nambour	887	812	-75	-8.5
Noosa	914	834	-80	-8.8
Nundah	913	890	-23	-2.5
Strathpine	809	754	-55	-6.8
Toowong	617	593	-24	-3.9
Other (a)	22	21	-1	%
Total	19,045	17,961	-1,084	-5.7

Note: For footnotes see end of table.

**TABLE 7 - JOB SEEKERS RECEIVING NEWSTART ALLOWANCE AND YOUTH ALLOWANCE
(OTHER) BY AREA SUPPORT OFFICE AND CUSTOMER SERVICE CENTRE**

<i>Area Support Office and Customer Service Centre</i>	July 2007	August 2007	Variation	
			July - August Number	Per cent
<i>SOUTH & WEST QUEENSLAND</i>				
Beenleigh	1,405	1,313	-92	-6.5
Browns Plains	1,210	1,136	-74	-6.1
Capalaba	552	520	-32	-5.8
Charleville	165	162	-3	-1.8
Cleveland	626	567	-59	-9.4
Dalby	488	472	-16	-3.3
Goodna	865	780	-85	-9.8
Goondiwindi	305	294	-11	-3.6
Inala	1,064	1,045	-19	-1.8
Ipswich	1,775	1,706	-69	-3.9
Mt Gravatt	1,351	1,289	-62	-4.6
Roma	132	137	5	3.8
South Brisbane	715	687	-28	-3.9
Stanthorpe	362	372	10	2.8
Stones Corner	1,172	1,100	-72	-6.1
Toowoomba	2,045	1,901	-144	-7.0
Warwick	449	429	-20	-4.5
Woodridge	1,581	1,496	-85	-5.4
Wynnum	647	605	-42	-6.5
Other (a)	13	12	-1	%
Total	16,922	16,023	-899	-5.3

Note: For footnotes see end of table.

**TABLE 7 - JOB SEEKERS RECEIVING NEWSTART ALLOWANCE AND YOUTH ALLOWANCE
(OTHER) BY AREA SUPPORT OFFICE AND CUSTOMER SERVICE CENTRE**

<i>Area Support Office and Customer Service Centre</i>	July 2007	August 2007	Variation July - August	
			Number	Per cent
<i>SOUTH AUSTRALIA</i>				
Berri	928	883	-45	-4.8
Broken Hill	887	857	-30	-3.4
Ceduna	242	237	-5	-2.1
Coober Pedy	142	144	2	1.4
Currie Street	720	656	-64	-8.9
Elizabeth	2,619	2,503	-116	-4.4
Enfield	1,486	1,442	-44	-3.0
Gawler	1,159	1,114	-45	-3.9
Glenelg	722	689	-33	-4.6
Kadina	775	742	-33	-4.3
Kilkenny	1,659	1,611	-48	-2.9
Marion	1,682	1,620	-62	-3.7
Modbury	1,811	1,681	-130	-7.2
Mt Barker	584	527	-57	-9.8
Mt Gambier	1,340	1,282	-58	-4.3
Murray Bridge	809	774	-35	-4.3
Noarlunga	2,460	2,343	-117	-4.8
Norwood	1,344	1,291	-53	-3.9
Port Adelaide	1,446	1,427	-19	-1.3
Port Augusta	682	689	7	1.0
Port Lincoln	599	583	-16	-2.7
Port Pirie	1,010	1,011	1	0.1
Salisbury	2,319	2,245	-74	-3.2
Torrensville	1,347	1,298	-49	-3.6
Victor Harbor	653	598	-55	-8.4
Whyalla	736	739	3	0.4
Other (a)	54	54	0	%
Total	30,215	29,040	-1,175	-3.9

Note: For footnotes see end of table.

**TABLE 7 - JOB SEEKERS RECEIVING NEWSTART ALLOWANCE AND YOUTH ALLOWANCE
(OTHER) BY AREA SUPPORT OFFICE AND CUSTOMER SERVICE CENTRE**

<i>Area Support Office and Customer Service Centre</i>	July 2007	August 2007	Variation	
			July - August Number	Per cent
WEST AUSTRALIA				
Albany	812	798	-14	-1.7
Armadale	723	693	-30	-4.1
Bunbury	1,393	1,350	-43	-3.1
Busselton	268	240	-28	-10.4
Cannington	1,053	1,015	-38	-3.6
Carnarvon	223	214	-9	-4.0
Cocos Islands	45	44	-1	%
Collie	5	5	0	%
Community Team Perth	68	72	4	%
Curtin on Campus SSC	20	14	-6	%
Esperance	272	279	7	2.6
Fremantle	1,016	974	-42	-4.1
Fremantle SACC	2	2	0	%
Fremantle SSC	69	42	-27	%
Geraldton	1,344	1,311	-33	-2.5
Gosnells	730	720	-10	-1.4
Innaloo	1,054	1,002	-52	-4.9
Joondalup	945	952	7	0.7
Joondalup SACC	2	3	1	%
Joondalup SSC	57	27	-30	%
Kalgoorlie	552	563	11	2.0
Karratha	269	266	-3	-1.1
Laverton RASC	56	58	2	%
Mandurah	955	949	-6	-0.6
Meekatharra RASC	9	71	62	%
Midland	1,458	1,428	-30	-2.1
Mirrabooka	1,307	1,255	-52	-4.0
Morley	1,151	1,083	-68	-5.9
Morley - Dewar Street	3	1	-2	%
Morley SSC	44	23	-21	%
Newman RASC	121	119	-2	-1.7
Northam	477	463	-14	-2.9
Rockingham	1,139	1,116	-23	-2.0
South Hedland	341	366	25	7.3
Spearwood	719	683	-36	-5.0
Victoria Park	1,188	1,166	-22	-1.9
Warwick Grove	547	518	-29	-5.3
Other (a)	36	43	7	%
Total	20,473	19,928	-545	-2.7

Note: For footnotes see end of table.

**TABLE 7 - JOB SEEKERS RECEIVING NEWSTART ALLOWANCE AND YOUTH ALLOWANCE
(OTHER) BY AREA SUPPORT OFFICE AND CUSTOMER SERVICE CENTRE**

<i>Area Support Office and Customer Service Centre</i>	July 2007	August 2007	Variation July - August	
			Number	Per cent
TASMANIA				
Bridgewater	574	579	5	0.9
Burnie	1,511	1,521	10	0.7
Devonport	1,691	1,685	-6	-0.4
Glenorchy	1,877	1,835	-42	-2.2
Hobart	1,378	1,189	-189	-13.7
Huonville	475	469	-6	-1.3
Launceston	3,132	3,072	-60	-1.9
Mowbray	8	9	1	%
Rosny Park	976	940	-36	-3.7
Sorell	478	486	8	1.7
Other (a)	49	54	5	%
Total	12,149	11,839	-310	-2.6
NORTH AUSTRALIA				
Alice Springs	1,114	1,185	71	6.4
Borroloola RASC	36	33	-3	%
Broome	360	378	18	5.0
Casuarina	789	771	-18	-2.3
Derby	95	94	-1	%
Fitzroy Crossing RASC	16	17	1	%
Halls Creek RASC	95	93	-2	%
Katherine	529	563	34	6.4
Knuckey Street	509	493	-16	-3.1
Kununurra	144	139	-5	-3.5
Maningrida	76	70	-6	%
Nhulunbuy	194	190	-4	-2.1
Palmerston	728	730	2	0.3
Tangentyere	160	143	-17	-10.6
Tennant Creek	136	132	-4	-2.9
Tennant Creek Remote	51	45	-6	%
Tiwi Islands RASC	159	165	6	3.8
Top End Remote	269	268	-1	-0.4
Wadeye RASC	47	58	11	%
Yuendumu RASC	27	36	9	%
Other (a)	20	17	-3	%
Total	5,554	5,620	66	1.2

Note: For footnotes see end of table.

**TABLE 7 - JOB SEEKERS RECEIVING NEWSTART ALLOWANCE AND YOUTH ALLOWANCE
(OTHER) BY AREA SUPPORT OFFICE AND CUSTOMER SERVICE CENTRE**

<i>Area Support Office and Customer Service Centre</i>	July 2007	August 2007	Variation July - August	
			Number	Per cent
PACIFIC CENTRAL				
Ballina	988	932	-56	-5.7
Beaudesert	325	313	-12	-3.7
Biggera Waters	1,291	1,251	-40	-3.1
Bourke	438	434	-4	-0.9
Brunswick Heads	530	507	-23	-4.3
Byron Bay	580	539	-41	-7.1
Casino	569	559	-10	-1.8
Coffs Harbour	2,716	2,591	-125	-4.6
Grafton	1,564	1,522	-42	-2.7
Lightning Ridge	182	185	3	1.6
Lismore	1,828	1,702	-126	-6.9
Maclean	0	0	0	%
Moree	512	494	-18	-3.5
Murwillumbah	556	518	-38	-6.8
Narrabri	419	413	-6	-1.4
Nerang	1,276	1,188	-88	-6.9
Palm Beach	1,643	1,552	-91	-5.5
Robina SCR	1	1	0	%
Southport	1,795	1,684	-111	-6.2
Tweed Heads	1,317	1,223	-94	-7.1
Walgett	230	218	-12	-5.2
Other (a)	29	37	8	%
Total	18,789	17,863	-926	-4.9
OTHER				
Centrelink Call Centres (b)	19	19	0	%
Not coded to an area	17	14	-3	%
Rounding adjustment (c)	-57	-2	55	%
AUSTRALIA	327,510	312,540	-14,970	-4.6

(a) Recipients not coded to a Customer Service Centre.

(b) Job seekers receiving NSA / YA (o) in Centrelink Call Centres which are not counted in the various Area Offices.

(c) Prior to this publication, the rounding adjustment was included in the Fairfield CSC.

Notes:

- Where the Customer Service Centre has a population less than 100 in either of the reported months, the monthly percentage variation has been suppressed and replaced with the percentage symbol '%'. .

- Most of the figures in this publication are averages and have been rounded. As a result, discrepancies may occur between sums of component items and totals, and in the calculation of variations.

- From July 2007, new Area Support Office boundaries came into effect. A concordance between the new and old Area structures is provided in Table A in the July 2007 edition of this publication.

**TABLE 8 - JOB SEEKERS RECEIVING NEWSTART ALLOWANCE AND YOUTH ALLOWANCE (OTHER)
FORTNIGHTLY EARNINGS (%) AND SEX (a), FORTNIGHT ENDING 24 AUGUST 2007**

<i>Fortnightly Earnings</i>	Short-term job seekers	Long-term job seekers	Total job seekers
MALES			
Did not earn an income	84.6	81.3	82.9
Earned an income	15.4	18.7	17.1
Amount earned			
\$0.01-\$62.00	0.6	0.9	0.8
\$62.01-\$142.00	2.2	2.7	2.5
\$142.01-\$236.00	2.5	3.2	2.9
\$236.01-\$316.00	1.8	2.3	2.1
Over \$316.00	8.1	9.6	8.9
Total	100.0	100.0	100.0
<i>Job seekers receiving NSA and YA (other)</i>	<i>91,130</i>	<i>100,804</i>	<i>191,934</i>
FEMALES			
Did not earn an income	73.6	70.8	72.0
Earned an income	26.4	29.2	28.0
Amount earned			
\$0.01-\$62.00	1.0	1.2	1.1
\$62.01-\$142.00	3.2	3.4	3.3
\$142.01-\$236.00	4.1	4.3	4.2
\$236.01-\$316.00	3.0	3.3	3.2
Over \$316.00	15.1	17.0	16.2
Total	100.0	100.0	100.0
<i>Job seekers receiving NSA and YA (other)</i>	<i>48,894</i>	<i>69,229</i>	<i>118,123</i>
PERSONS			
Did not earn an income	80.8	77.0	78.7
Earned an income	19.2	23.0	21.3
Amount earned			
\$0.01-\$62.00	0.8	1.0	0.9
\$62.01-\$142.00	2.6	3.0	2.8
\$142.01-\$236.00	3.1	3.6	3.4
\$236.01-\$316.00	2.3	2.7	2.5
Over \$316.00	10.5	12.6	11.7
Total	100.0	100.0	100.0
<i>Job seekers receiving NSA and YA (other)</i>	<i>140,024</i>	<i>170,033</i>	<i>310,057</i>

(a) Total figures in this table are different from Tables 2 to 7 because of different methodologies applied. Tables 2 to 7 are based on averages of weekly figures while this table is based on point in time data. See Explanatory Notes for further information.

EXPLANATORY NOTES

Introduction

This publication provides monthly statistical information on DEWR labour market and related payments administered by Centrelink. These Explanatory Notes provide details of the scope and methodology of the publication, as well as the policy changes which have affected the data since the publication was introduced in December 1995 by the then Department of Social Security (which became FaCS in October 1998).

Prior to December 1995, this publication was titled the *Monthly Job Search and Newstart Allowance Statistics*.

Scope

The primary focus of the publication is to provide information on unemployed people on Newstart Allowance and Youth Allowance, with a particular focus on the total number of job seekers. The number of people on Mature Age Allowance, Partner Allowance and Widow Allowance are also reported.

Methodology

Data in this publication relate to the average number of people who are both eligible (eg. meet 'unemployed' qualification) and entitled (eg. meet income and assets criteria) to receive a payment calculated over a reference month. Averages are calculated using figures collected for each Friday throughout the reference month.

Table 1 provides information on the total number of unemployed people on Newstart Allowance and Youth Allowance. The Youth Allowance population is split into Youth Allowance (full-time students), Youth Allowance (Australian Apprentices) and Youth Allowance (other) categories. Numbers of people on Mature Age Allowance, Partner Allowance and Widow Allowance are also provided.

Tables 2 and 3 provide a summary of the Newstart Allowance and Youth Allowance (other) populations and show the derivation of the respective job seeker populations (see the reference to job seekers in the Comparability of Data section of these Explanatory Notes). These populations are added together to derive the total number of job seekers. Tables 4 to 8 provide information on the total job seeker population.

The earnings data in Table 8 is derived using a different methodology to that of the other tables in the publication. Table 8 is based on the combined population of job seekers who are eligible for and entitled to receive Newstart Allowance or Youth Allowance (other) at the end of the second last week in the month. Thus, the data obtained from this table will not be directly comparable with those calculated using monthly averages in other tables.

Payment History

Youth Allowance

From 1 July 1998 Youth Allowance was introduced to provide income support to young people, including students, those looking for work, and those who are sick. Youth Allowees may be undertaking full-time study, full-time job search or a combination of approved activities. Some young people will be exempt from the activity test because of their personal circumstances, eg. illness, homelessness or major personal crisis. The Youth Allowance replaced:

- AUSTUDY for 16-24 year olds (and certain 15 year olds);
- Newstart Allowance for 16-20 year olds (and certain 15 year olds);
- Youth Training Allowance for 16-17 year olds (and certain 15 year olds);
- Sickness Allowance for 16-20 year olds (and certain 15 year olds); and
- More-than-minimum rate Family Payment for secondary students aged 16-18 not getting AUSTUDY.

Youth Allowance recipients are subject to the parental means test. Under previous arrangements, unemployed people aged 18 to 20 were not subject to the parental means test, unlike 18 to 20 year old students.

Special provisions applied for 18 to 20 year olds who were already on Newstart or Sickness Allowance at the date of announcement of Youth Allowance, and who remained on payment when Youth Allowance commenced on 1 July 1998. This group were able to remain on their existing payment and retain their existing benefits.

Youth Allowance had a significant downward effect on Newstart Allowance numbers from July 1998 and total job seeker numbers due to the parental means test.

Newstart Allowance

From 1 July 1998, Newstart Allowance for 16-20 year olds (and certain 15 year olds) was replaced by Youth Allowance. Young people aged 18 to 20 years old who were on Newstart or Sickness Allowance at the date of announcement of Youth Allowance and when Youth Allowance commenced on 1 July 1998, were able to remain on Newstart Allowance.

From 20 September 1996, Job Search Allowance and Newstart Allowance were combined into one payment - Newstart Allowance - which was payable to eligible recipients aged 18 years and over and to some people who were in receipt of Job Search Allowance and aged under 18 at 31 December 1994 (see Job Search Allowance).

Prior to 20 September 1996, Newstart Allowance was payable to eligible persons over 18 years who had been registered as unemployed with the Commonwealth Employment Service (CES) for 12 months or more.

<i>Job Search Allowance</i>	<p>From 20 September 1996, the payment was combined with Newstart Allowance to form one payment called Newstart Allowance. All Job Search Allowance recipients were transferred to Newstart Allowance.</p> <p>Prior to 20 September 1996, Job Search Allowance was payable to eligible persons who had been registered as unemployed with the CES for up to 12 months. It was also payable to eligible persons who were in receipt of Job Search Allowance and under 18 years of age at 31 December 1994. Persons aged 15 to 18 years who were not receiving Job Search Allowance prior to 1 January 1995 commenced on Youth Training Allowance.</p>
<i>Sickness Allowance</i>	<p>From 17 March 1996, persons in receipt of Newstart Allowance or Youth Training Allowance who became temporarily incapacitated no longer transferred to Sickness Allowance after 13 weeks. This change had the effect of increasing total Newstart Allowance/Youth Training Allowance figures but did not affect job seeker figures as those recipients who were incapacitated were excluded from the Newstart and Youth Training job seeker populations.</p> <p>Under current arrangements, these recipients remain on their existing payments but are exempt from the activity test for the duration of their medical certificates. People who become unemployed because of illness, and those who suffer a potential loss of income due to sickness, are paid Newstart Allowance because they are unemployed.</p> <p>Sickness Allowance for 16 to 20 year olds (and certain 15 year olds) has now been replaced by Youth Allowance, which was introduced on 1 July 1998 (see Youth Allowance).</p>
<i>Partner Allowance</i>	<p>From 20 September 2003, Partner Allowance was closed to new claimants. People on Partner Allowance before this date can remain on the allowance while they remain 'current', that is retain eligibility and entitlement for the allowance.</p> <p>From 1 July 1995 Partner Allowance has only been granted to persons who are dependent partners of pensioners and allowees and who were born before 1 July 1955, have no dependent children and have little or no recent workforce experience. Other dependent partners have to qualify for an income support payment in their own right, such as Newstart Allowance.</p> <p>Partner Allowance was introduced in September 1994, and was paid to partners of persons receiving Job Search Allowance, Newstart Allowance, Sickness Allowance or Special Benefit if certain eligibility criteria were satisfied.</p>
<i>Youth Training Allowance</i>	<p>Youth Training Allowance was replaced by Youth Allowance on 1 July 1998 (see Youth Allowance).</p> <p>From 1 January 1995, eligible persons aged under 18 years who were new entrants to the job search pool were paid Youth Training Allowance. (People who were in receipt of Job Search</p>

Allowance and aged under 18 years at 31 December 1994 continued to be paid Job Search Allowance. From 20 September 1996, those young persons still being paid Job Search Allowance were transferred to Newstart Allowance.)

Widow Allowance Widow Allowance, introduced on 1 January 1995, is payable to females aged 50 years or over who have become widowed, divorced or separated since turning 40 years (50 prior to 20 March 1997), if they meet a number of other criteria relating to current marital status and recent work experience. This has had a slight downwards effect on Newstart Allowance numbers from January 1995.

Mature Age Allowance From 20 September 2003, Mature Age Allowance was closed to new claimants. People on Mature Age Allowance before this date can remain on the allowance while they remain 'current', that is retain eligibility and entitlement for the allowance.

From 1 July 1996, the qualification conditions for Mature Age Allowance changed for new claimants. The requirement for 12 months prior receipt of income support was reduced to 9 months for people transferring from Newstart Allowance and removed entirely for people transferring from non-activity tested payments. The requirement to have been registered as unemployed for 9 months was replaced with a requirement to have no recent workforce experience. Reporting of these new claimants commenced from September 1996.

Mature Age Allowance was introduced on 24 March 1994, and was paid to long-term unemployed persons aged 60 years and over (but below Age Pension age) who had been receiving income support for 9 months or more and who were eligible for Newstart Allowance. The introduction of Mature Age Allowance had a downwards effect on Newstart Allowance numbers from April 1994 until September 2003.

Comparability of Data

There have been significant changes to the data presented in this publication due to a number of events. The main changes are:

- the method of counting recipients;
- the inclusion of some CDEP recipients in the total recipient numbers;
- the introduction of Youth Allowance in July 1998;
- the way 'job seeker' is defined; and
- the way duration is calculated.

People using this data to construct time series should note the following comments.

Definition of Recipient From July 2002, FaCS introduced a new method to more accurately measure the number of people receiving labour market and related payments. For those receiving labour market and related payments, their eligibility and entitlement status is administered by a payment system called Newstart Common Platform System. Within this system recipients who are both eligible and entitled to receive a payment have a determination

status of 'current'. The new method therefore counts these 'current' recipients.

The old method of counting recipients was specified to include all paid recipients - those who received a payment within a given fortnight. As compiled, however, this count excluded, from mid 1998, recipients who received a 'one-off' payment. These can occur, for instance, when a normal payment is interrupted (eg. payment is cancelled and then restored within that pay period) and a portion of the normal payment is paid.

The time series in Tables 1 and 4 reflect the revised method, as does the remainder of the publication. Revised historical data for these time series from May 1998 to June 2002 can be found in the July 2002 publication.

From July 2003 FaCS introduced a more sustainable methodology for this revised recipient count. Due to limitations in available data sources in 2002, the revised recipient count had to be derived through a complicated process. This more sustainable methodology resulted in slight differences from the recipient numbers used in previous editions.

*Community Development
Employment Projects
(CDEP)* From 20 March 2000, eligible participants in CDEP started receiving CDEP participant supplement and other add-ons, such as rent assistance, as part of income support payments. This added a number of new recipients to those who are normally eligible for payments reported in this publication.

*Introduction of
Youth Allowance* The sum of the number of Newstart Allowees and Youth Training Allowees prior to July 1998 is broadly comparable with the sum of Newstart Allowees and Youth Allowees (other) after July 1998. There are two main problems in comparing these two series. The first is the exclusion of some 18 to 20 year old unemployed people due to the application of the Youth Allowance parental means test (see the Youth Allowance section under Payment History). The second is the inclusion of Sickness Allowees in the Youth Allowance (other) population.

There is greater comparability between total Newstart Allowance and Youth Training Allowance job seekers prior to July 1998 and total Newstart Allowance and Youth Allowance (other) job seekers after July 1998. This is because the Sickness Allowance group is excluded from the job seeker total. The problem, however, of the exclusion of some recipients through the application of the Youth Allowance parental means test still remains.

Job seekers Prior to July 1998, the job seeker category was defined by excluding all Newstart Allowees who did not receive a payment, recipients who were incapacitated, and those receiving a payment who were undertaking training. Some people who were not required to engage in job search were classified as job seekers, including people undertaking full-time voluntary work, people on jury duty and pregnant women around the time of the birth of their child.

From July 1998, the definition of job seekers has been placed on a sounder conceptual basis. It is now derived for Newstart Allowance and Youth Allowance (other) recipients by excluding all people who did not receive a payment due to their own and/or their partner's income, or where applicable, parental income, and all those known not to be required to search for work. People receiving Intensive Support Customised Assistance under Job Network arrangements are classified as job seekers although they may not always be undertaking job search. These people negotiate their activity agreement with their Job Network member.

The total number of job seekers (comparable to pre-July 1998 estimates) is calculated by adding together the number of job seekers in receipt of Newstart Allowance and Youth Allowance (other) - see the Explanatory Notes on *Youth Allowance*.

Duration

Following system changes in May 1998, duration has been defined according to the time a recipient spends on income support - short-term recipients are those who have been on income support for up to 12 months and long-term recipients are those who have been on income support for 12 months or more.

Prior to 1998, duration was defined according to the time a recipient was registered as unemployed - short-term recipients were people who were registered as unemployed for up to 12 months and long-term recipients were people who were registered for 12 months or more.

Closure of Mature Age and Partner Allowances

From 20 September 2003, Mature Age Allowance and Partner Allowance were closed to new claimants. People on these allowances before this date can remain on that allowance while they remain 'current', that is retain eligibility and entitlement for the allowance. The majority of people who would previously have claimed these payments will now claim Newstart Allowance.

Symbols

n.a. not available
 .. not applicable

GLOSSARY

Activity test status	The activity that a Newstart Allowance or Youth Allowance (other) recipient has agreed to undertake in order to meet the activity test. To satisfy the activity test recipients must be actively seeking and willing to take up work or undertaking activities to improve their employment prospects.
Age	Age in years at time of data collection.
Area Support Office	A Centrelink office that supports a set of Customer Service Centres for a specified area. These are generally not confined to State boundaries.
Centrelink Youth Service Centre	A Centrelink Youth Service Centre consists of specialised staff who provide young people with improved access to Government services and income support. This is done by offering a mainstream service, as well as specialist case management to help access educational, labour market, job search, housing, health and general welfare assistance; and by providing a regular FaCS visiting service to youth via hostels, refuges and voluntary agencies.
Community Development Employment Projects (CDEP)	<p>The CDEP scheme is a programme funded currently by DEWR and in the past by the Aboriginal and Torres Strait Islander Commission (ATSIC). The scheme enables Aboriginal and Torres Strait Islander community councils and other approved Aboriginal and Torres Strait Islander groups to offer work to community members in activities that assist individuals in acquiring skills which benefit the community, develop business enterprises and/or lead to unsubsidised employment. The scheme also aims to develop management and business skills in an environment conducive to the principles of self-determination.</p> <p>The CDEP Participant Supplement (CPS) is payable to eligible CDEP participants. It can be paid fortnightly or as a 12 weekly payment.</p>
Customer Service Centre	A Customer Service Centre set within a particular region that provides FaCSIA, DEWR and other payments and related information and services to recipients. Customer Service Centres are managed by Area Support Offices.
Did not receive a payment	Persons who did not receive a payment due to their own income and/or that of their partner, or parents, where applicable. This group is often referred to as 'zero paid'.
Eligibility and payment status	Refer to the Methodology entry in the Explanatory Notes.
Fortnightly earnings	Amount of income earned, derived, or received by a person for the person's own use or benefit in the previous fortnight.
Incapacitated	A person on Newstart Allowance or Youth Allowance (other) who has an activity test status indicating they are temporarily ill or incapacitated. Refer to the entry for Sickness Allowance in the Explanatory Notes.

Job seekers	A person on Newstart Allowance or Youth Allowance (other) who would usually be engaged in jobsearch. See Explanatory Notes for definition and history.
Job Search Allowance (JSA)	Up to 20 September 1996, Job Search Allowance was payable to CES eligible persons who had been registered as unemployed with the CES for up to 12 months. From 20 September 1996, the payment was combined with Newstart Allowance to form one payment called Newstart Allowance. See Explanatory Notes for history.
Long-term recipients	Persons on Newstart Allowance or Youth Allowance who have been receiving income support for 12 months or more. Duration of long-term recipients can be reset to zero if they exited from payments for more than 13 weeks.
Mature Age Allowance (MAA)	From 20 September 2003, Mature Age Allowance was closed to new claimants. People on Mature Age Allowance before this date can remain on the allowance while they remain 'current', that is retain eligibility and entitlement for the allowance. Mature Age Allowance, a non-activity-tested payment, is payable to unemployed people aged 60 years and over (but below Age Pension age) with little or no recent workforce experience who meet certain requirements for previous receipt of income support. See Explanatory Notes for history.
Newstart Allowance (NSA)	Newstart Allowance is payable to eligible unemployed persons aged 21 years and over (but below Age Pension age) who satisfy the activity test. See Explanatory Notes for history.
Newstart Common Platform System (NCP)	The Newstart Common Platform System (NCP) was introduced in May 1998. The NCP administers all labour market and related payments. This includes primary payments such as Newstart Allowance, Youth Allowance, Mature Age Allowance, Widow Allowance and Partner Allowance. Other payments on the NCP include Special Benefit, Sickness Allowance, Exceptional Circumstances Relief, Farm Help and Austudy.
Partner Allowance (PA)	<p>From 20 September 2003, Partner Allowance was closed to new claimants. People on Partner Allowance before this date can remain on the allowance while they remain 'current', that is retain eligibility and entitlement for the allowance.</p> <p>Partner Allowance, a non-activity-tested payment, is payable to persons who are dependent partners of pensioners and allowees and who were born before 1 July 1955, have no dependent children and have little or no recent workforce experience. See Explanatory Notes for history.</p>
Short-term recipients	Persons on Newstart Allowance or Youth Allowance who have been receiving income support for less than 12 months. Duration of short-term recipients can be reset to zero if they exited from payments for more than 6 weeks.
States	States and Territories of Australia derived from the postcode of the recipient's residence as held on the Centrelink payment system.

Widow Allowance (WA)	<p>From 1 July 2005 Widow Allowance was closed to new claimants, unless the woman was born on or before 1 July 1955.</p> <p>Widow Allowance, a non-activity tested payment, is payable to females aged 50 years or over who have become widowed, divorced or separated since turning 40 years if they have little or no recent work experience and meet a number of other criteria relating to current marital status. See Explanatory Notes for history.</p>
Youth Training Allowance (YTA)	<p>From 1 January 1995 eligible persons aged under 18 years who were registered as unemployed with the CES were paid Youth Training Allowance. From 1 July 1998, Youth Training Allowance was replaced by Youth Allowance. See Explanatory Notes for history.</p>
Youth Allowance (YA)	<p>Youth Allowance is payable to eligible full-time students aged 16 to 25 years, and to eligible unemployed persons aged 16 to 20 years who satisfy the activity test. Note, there are certain exceptions for some 15 and 25 year olds. See Explanatory Notes for history.</p> <p>Youth Allowees may be undertaking full-time study, full-time job search or a combination of approved activities. Some young people will be exempt from the activity test because of their personal circumstances, eg. illness, homelessness or major personal crisis. See the Explanatory Notes for more information.</p>
Youth Allowance (other)	<p>Youth Allowance recipients who are not full-time students or full-time Australian Apprentices.</p>
Zero paid	<p>See 'Did not receive a payment'.</p>

APPENDIX

COMPARISONS BETWEEN DEWR UNEMPLOYMENT LABOUR MARKET PAYMENT NUMBERS AND ABS LABOUR FORCE UNEMPLOYMENT STATISTICS

Official statistics	Official unemployment statistics are released by the Australian Bureau of Statistics (ABS). The ABS uses definitions recommended by the International Labour Office which have been accepted internationally as the most appropriate for the compilation of official statistics of unemployment.
ABS definition	The ABS unemployment statistics measure the number of persons who, for a particular reference period, did not undertake any paid work, were actively looking for work and were available to start work.
DEWR Unemployment Labour Market Payment Statistics	The labour market payment statistics give the number of persons who are both eligible and entitled to receive Newstart Allowance or Youth Allowance (other). The criteria for receipt of these payments do not match those the ABS uses to determine whether a person is classed as unemployed or employed for statistical purposes.
Differences	Care should be taken when comparing the ABS labour force and DEWR labour market payment data. There are a number of reasons why the two series cannot be directly compared.
<i>Duration</i>	<p>Both DEWR and the ABS classify long-term duration as over 12 months, but use substantially different definitions of duration:</p> <p>DEWR measures duration of income support. This includes not just time on unemployment benefits but time on any income support payment.</p> <p>The ABS measures length of time unemployed using their unemployment definition.</p> <p>DEWR unemployed recipients can have breaks without payment for up to 25 weeks but still be classified as long-term income support recipients:</p> <ul style="list-style-type: none">• Recipients who do not receive a payment due to their earnings can have up to 12 weeks without a payment before they are automatically cancelled. This reduces disincentives to accept short-term work.• Long-term recipients can have another 13 weeks off payment after payment is cancelled and still keep their long-term status if they return to income support. This means they keep access to assistance such as the Employment Entry Payment and the higher payment rate for recipients over 60.

For the ABS statistics, any hours of work for a period as short as two weeks count as a break from unemployment and so are enough to reset a person's unemployment duration.

The difference between these two concepts, together with the fact that DEWR recipients are able to have ongoing part-time work (see 'employment' below) mean that many unemployed recipients remain classified by DEWR as long-term recipients when they would be classified as short-term unemployed under the ABS definition.

Seasonal adjustment The ABS produces a seasonally adjusted series. The DEWR labour market payment numbers data are not seasonally adjusted.

Classification The ABS classifies a person as unemployed if he or she is aged 15 years and over, was not employed during the week before the interview, has actively looked for full-time or part-time work and is available to start work. From February 2004, people who had not actively looked for work because they were waiting to start a job within four weeks are also classified as unemployed.

The Newstart Allowance and Youth Allowance (other) series generally count people who are eligible for and entitled to receive a payment between the ages of 15 years and 64 years in the case of men and 15 to 63 years in the case of women.

Employment Newstart Allowance and Youth Allowance (other) recipients may be employed part-time, but within an income test limit; the ABS classifies a person as "employed" if, among other things, he or she has worked for one hour or more during the survey period.

Timing The timing of collections of the series are different:

- DEWR reports monthly average numbers of people both eligible for and entitled to receive Newstart Allowance and Youth Allowance (other). These monthly averages are calculated using figures collected for each Friday throughout the reference month.
- ABS numbers are based on a sample interview survey of occupants of selected dwellings covering around 0.5% of the total Australian population. These persons are interviewed during the two weeks beginning the Monday between the 6th and 12th of each month and the information obtained is based on the week before the interview takes place.

Treatment of partners The ABS series includes unemployed persons whose spouse is working, irrespective of income, whereas Newstart Allowance and Youth Allowance (other) recipients are subject to an income and assets test for themselves and their spouse.

Pensioners The ABS series includes persons being paid a pension but looking for work (eg. sole parents in receipt of Parenting Payments looking for work).

<i>Non job seekers</i>	The overall Newstart Allowance and Youth Allowance (other) series includes persons who are not required to undertake jobsearch. These persons are separately identified in Tables 2 and 3, and have then been excluded in subsequent tables. These people may be undertaking training, the development of self-employment opportunities, full-time voluntary work or a combination of voluntary and part-time work which excludes them from jobsearch obligations. They may also be incapacitated or have another temporary exemption from jobsearch.
<i>Waiting periods</i>	The ABS series includes persons who are serving a waiting period before being granted Newstart Allowance or Youth Allowance (other), or whose allowance was deferred.
<i>Survey</i>	The ABS figures are derived from a Labour Force Survey which is a sample survey, whereas the DEWR statistics are a complete count of those both eligible for and entitled to receive Newstart Allowance and Youth Allowance (other).

FOR MORE INFORMATION

Labour market information

Other statistics on recipients of labour market related payments are available on request.

In addition to Newstart and Youth Allowances, statistics are also available on Partner Allowance, Mature Age Allowance and Widow Allowance.

For publication distribution enquiries email:
MI.WORKINGAGE.PAYMENTS@centrelink.gov.au

Written correspondence concerning this publication or statistics on labour market related payments should be addressed to:

Director
Income Support Information Section
Department of Employment and Workplace Relations
PO Box 9879
Canberra Mail Centre ACT 2601

or forwarded via facsimile to (02) 6275 3328.

Other recipient information

Statistics relating to other recipients are also available, including recipient numbers and characteristics for the various FaCSIA pensions, benefits and family payments.

Other statistical outputs

The following statistical outputs are available on request:

Department of Families, Community Services and Indigenous Affairs (FaCSIA)
Income Support Customers: a Statistical Overview
1996, 1997, 1998, 1999, 2000, 2001, 2002, 2003 and 2004.