

AUSTRALIAN REGIONAL LABOUR MARKETS

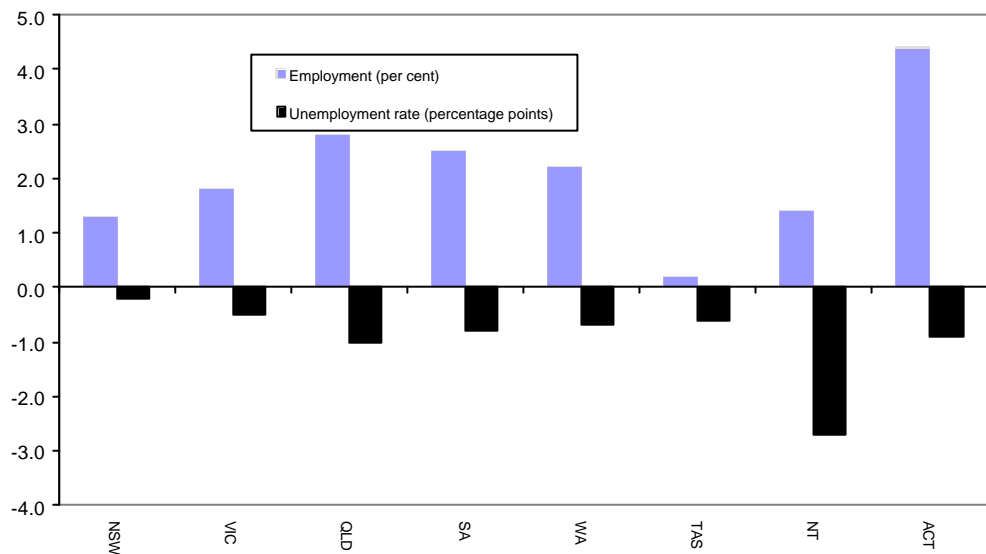
SEPTEMBER QUARTER 2002

State/Territory labour market developments

MAIN FINDINGS

All States and Territories recorded a rise in employment over the year to the September quarter 2002. The largest increase (in percentage terms) was recorded in the ACT (up by 4.4 per cent), followed by Queensland (up by 2.8 per cent) and South Australia (up by 2.5 per cent). All States and Territories also recorded a reduction in their unemployment rate over the year to September 2002.

CHANGE IN EMPLOYMENT AND THE UNEMPLOYMENT RATE, SEPTEMBER QUARTER 2001 TO SEPTEMBER QUARTER 2002



Developments at the ABS Labour Market Region Level

In all, 67 per cent of regions recorded an increase in employment over the year to the September quarter 2002 while an equivalent percentage of regions recorded a reduction in their unemployment rate. A number of regions have recorded strong employment growth as well as a significant reduction in their unemployment rate over the last 12 months. In particular:

- Loddon-Mallee in Victoria recorded a 9.4 per cent increase in employment while the unemployment rate fell by 3.5 percentage points to 5.5 per cent;
- North and West Moreton in Queensland recorded an 11.0 per cent increase in employment while the unemployment rate fell by 2.9 percentage points to 6.9 per cent; and
- Outer Brisbane City recorded a 12.1 per cent increase in employment while the unemployment rate fell by 1.1 percentage points to 6.5 per cent.

LABOUR FORCE STATUS BY ABS LABOUR FORCE REGIONS
SEPTEMBER QUARTER 2002
Not Seasonally Adjusted

State/Region	Employed		Unemployed		Unemployment rate		Participation rate	
	'000	Annual change	'000	Annual change	%	Annual change % pts	%	Annual change % pts
AUSTRALIA	9368.5	178.4	594.1	-50.6	6.0	-0.6	63.6	-0.1
<i>Metropolitan Australia*</i>	<i>5982.6</i>	<i>132.0</i>	<i>357.4</i>	<i>-27.5</i>	<i>5.6</i>	<i>-0.5</i>	<i>64.4</i>	<i>-0.1</i>
<i>Non-metropolitan Australia*</i>	<i>3385.9</i>	<i>46.4</i>	<i>236.7</i>	<i>-23.1</i>	<i>6.5</i>	<i>-0.7</i>	<i>62.2</i>	<i>0.0</i>
New South Wales	3117.8	40.9	185.3	-4.9	5.6	-0.2	62.6	-0.1
<i>Sydney</i>	<i>2090.2</i>	<i>33.1</i>	<i>106.9</i>	<i>2.2</i>	<i>4.9</i>	<i>0.0</i>	<i>65.0</i>	<i>-0.2</i>
Inner Sydney and Inner Western Sydney	267.2	-1.8	11.7	0.4	4.2	0.2	68.6	-0.9
Inner Sydney	168.9	-12.0	7.1	-0.7	4.1	-0.1	70.7	-1.8
Eastern Suburbs	125.6	3.6	5.8	0.3	4.4	0.1	65.7	-0.6
St George-Sutherland	226.6	13.7	9.9	2.1	4.2	0.6	66.6	1.7
Canterbury-Bankstown	139.2	7.4	8.7	0.1	5.9	-0.3	56.5	0.6
Fairfield-Liverpool/ Outer South Western Sydney	277.8	-2.0	19.7	-6.9	6.6	-2.1	63.4	-1.2
Fairfield-Liverpool	159.5	1.9	11.0	-3.2	6.5	-1.8	59.9	-0.6
Central Western Sydney	138.0	12.5	7.6	3.0	5.2	1.7	62.3	5.8
Outer Western Sydney and Blacktown	290.4	-2.3	14.4	0.2	4.7	0.1	67.2	0.1
Lower Northern Sydney	147.1	-2.2	7.4	0.8	4.8	0.6	64.9	-5.1
Hornsby-Ku-ring-gai and Baulkham Hills	221.6	0.5	8.3	1.6	3.6	0.7	67.8	-3.2
Northern Beaches	128.7	0.3	4.4	2.2	3.3	1.6	70.4	2.4
Gosford-Wyong	128.0	3.3	9.0	-1.6	6.6	-1.3	58.2	-0.1
<i>Balance of New South Wales</i>	<i>1027.6</i>	<i>7.8</i>	<i>78.4</i>	<i>-7.1</i>	<i>7.1</i>	<i>-0.6</i>	<i>58.4</i>	<i>0.0</i>
Hunter	237.0	-1.5	18.0	-9.3	7.1	-3.2	55.6	-2.0
Newcastle	206.5	2.0	14.8	-9.6	6.7	-4.0	57.1	-1.7
Illawarra and South Eastern	267.3	14.8	23.6	5.4	8.1	1.4	59.6	1.8
Illawarra	184.2	9.6	17.9	6.3	8.9	2.6	59.2	2.5
Wollongong	129.4	-4.1	15.4	7.0	10.6	4.7	60.1	0.4
Richmond-Tweed/ Mid-North Coast	185.5	-1.7	16.8	-3.9	8.3	-1.7	55.4	-0.7
Northern/ Far West-North Western/ Central West	192.3	-17.7	11.0	0.5	5.4	0.7	57.0	-2.2
Murray-Murrumbidgee	145.5	13.8	9.1	0.3	5.9	-0.4	68.5	4.6
Victoria	2364.3	42.6	141.2	-11.4	5.6	-0.5	63.5	-0.2
<i>Melbourne</i>	<i>1758.2</i>	<i>32.1</i>	<i>101.8</i>	<i>-9.1</i>	<i>5.5</i>	<i>-0.6</i>	<i>64.0</i>	<i>-0.6</i>
Outer Western Melbourne	271.5	18.5	20.2	-2.2	6.9	-1.2	62.8	2.2
North Western Melbourne	121.7	-9.0	9.1	-5.4	6.9	-3.0	61.0	-3.3
Inner Melbourne	146.8	5.6	7.1	-2.9	4.6	-2.0	70.3	0.5
North Eastern Melbourne	206.5	9.9	12.8	-0.5	5.9	-0.5	64.6	1.8
Inner Eastern Melbourne	306.7	0.0	11.4	-2.4	3.6	-0.7	63.0	-1.7
Southern Melbourne	200.2	7.5	7.6	-1.6	3.6	-0.9	64.0	-0.4
Outer Eastern Melbourne	231.3	-3.4	17.8	7.7	7.1	3.0	68.2	-3.7
South Eastern Melbourne	174.7	12.3	10.2	-1.2	5.5	-1.0	63.6	1.1
Mornington Peninsula	99.0	-9.3	5.8	-0.6	5.5	-0.1	57.6	-4.7
<i>Balance of Victoria</i>	<i>606.0</i>	<i>10.5</i>	<i>39.3</i>	<i>-2.3</i>	<i>6.1</i>	<i>-0.4</i>	<i>62.1</i>	<i>0.8</i>
Barwon-Western District	163.1	-7.9	10.0	2.3	5.8	1.5	61.3	-0.3
Central Highlands-Wimmera	95.5	6.9	7.0	-1.1	6.8	-1.6	62.9	3.2
Loddon-Mallee	121.3	10.4	7.0	-3.9	5.5	-3.5	63.2	0.0
Goulburn-Ovens-Murray	135.0	-1.0	7.8	0.5	5.4	0.3	65.1	2.2
All Gippsland	91.1	2.1	7.5	-0.1	7.6	-0.3	57.5	-0.6

* The ABS defines metropolitan as those regions located within the State capital cities. Non-metropolitan is defined as those regions located outside the State capital cities as well as the two Territories.

LABOUR FORCE STATUS BY ABS LABOUR FORCE REGIONS
SEPTEMBER QUARTER 2002
Not Seasonally Adjusted

State/Region	Employed		Unemployed		Unemployment rate		Participation rate	
	'000	Annual change	'000	Annual change	%	Annual change % pts	%	Annual change % pts
Queensland	1761.3	47.7	128.4	-16.9	6.8	-1.0	64.7	-0.2
Gold Coast	213.0	15.2	16.1	-5.1	7.0	-2.6	63.6	0.6
<i>Brisbane</i>	835.7	37.4	59.7	-11.4	6.7	-1.5	66.4	0.6
Brisbane City Inner Ring	196.0	-2.6	11.7	-2.9	5.6	-1.2	67.4	-1.3
Brisbane City Outer Ring	268.6	29.0	18.7	-0.9	6.5	-1.1	66.8	2.8
South and East Brisbane Balance	164.2	4.4	15.4	-3.0	8.6	-1.8	66.7	2.0
North and West Brisbane Balance	206.9	6.6	13.9	-4.6	6.3	-2.1	64.8	-1.3
<i>Balance of Queensland</i>	925.6	10.3	68.6	-5.6	6.9	-0.6	63.2	-1.0
South and East Moreton	203.4	11.6	14.8	-4.2	6.8	-2.2	63.2	0.4
North and West Moreton	163.6	16.2	12.0	-3.8	6.9	-2.9	61.0	0.1
Wide Bay-Burnett	95.3	7.8	11.3	2.1	10.6	1.1	57.2	1.7
Darling Downs-South West	101.2	-11.6	4.9	-0.8	4.7	-0.2	60.8	-3.6
Mackay-Fitzroy-Central West	156.6	0.7	10.3	0.6	6.2	0.3	67.9	0.2
Northern-North West	107.9	1.2	7.4	0.1	6.4	0.0	67.5	-1.1
Far North	97.6	-15.6	7.8	0.4	7.4	1.2	64.8	-6.6
South Australia	692.6	16.9	47.2	-5.4	6.4	-0.8	60.5	0.5
<i>Adelaide</i>	513.9	18.4	35.8	-4.8	6.5	-1.1	60.5	0.8
Northern Adelaide	155.8	3.1	11.5	-3.3	6.9	-2.0	58.9	-0.6
Western Adelaide	96.7	3.4	8.9	0.0	8.5	-0.3	58.6	0.8
Eastern Adelaide	111.4	6.8	6.5	0.6	5.5	0.1	63.2	1.7
Southern Adelaide	150.1	5.1	8.8	-2.0	5.6	-1.4	61.6	1.8
<i>Balance of South Australia</i>	178.7	-1.4	11.4	-0.6	6.0	-0.2	60.6	-0.5
Northern and Western SA	67.4	4.6	4.9	-1.4	6.8	-2.4	58.0	1.4
Southern and Eastern SA	111.3	-6.0	6.5	0.8	5.5	0.9	62.4	-1.7
Western Australia	960.7	21.0	61.2	-6.2	6.0	-0.7	66.3	-0.2
<i>Perth</i>	702.7	10.2	45.3	-3.5	6.1	-0.5	65.2	-0.6
Central Metropolitan	62.5	2.1	3.5	0.2	5.2	0.1	64.4	1.3
East Metropolitan	111.6	-2.8	6.9	-1.2	5.9	-0.8	65.9	-0.8
North Metropolitan	217.9	-0.7	15.3	2.0	6.6	0.8	66.5	-2.8
South West Metropolitan	143.5	-2.6	8.3	-1.6	5.4	-0.9	61.8	-2.4
South East Metropolitan	167.1	14.4	11.4	-2.8	6.4	-2.1	66.6	3.4
<i>Balance of Western Australia</i>	258.0	10.8	15.8	-2.7	5.8	-1.2	69.6	1.0
Lower Western WA	128.3	-1.5	8.9	-0.2	6.5	0.0	65.7	0.3
Remainder-Balance WA	129.7	12.2	6.9	-2.5	5.1	-2.4	74.0	1.4
Tasmania	196.9	0.4	19.4	-1.4	9.0	-0.6	57.8	-0.5
Greater Hobart-Southern	93.5	-0.6	9.2	-0.9	9.0	-0.8	56.9	-0.6
<i>Greater Hobart</i>	81.8	0.8	7.9	-0.8	8.8	-0.9	57.4	-0.3
Northern	57.5	-3.0	4.9	-0.7	7.9	-0.6	58.4	-2.3
Mersey-Lyell	45.8	4.1	5.2	0.2	10.3	-0.6	58.7	1.9
Northern Territory	100.3	1.4	4.3	-2.9	4.1	-2.7	73.5	-1.2
Australian Capital Territory	174.6	7.4	7.2	-1.4	4.0	-0.9	73.3	1.5

EXPLANATORY NOTES

Introduction

The regional labour market estimates presented in this brochure are three monthly averages derived from the Australian Bureau of Statistics (ABS) Monthly Labour Force Survey. These estimates are not adjusted to take account of seasonal and other variations and can exhibit irregular movements. They should therefore be used with caution.

Related information

Users may wish to refer to the DEWR *Small Area Labour Markets, Australia* publication which is available at <http://www.workplace.gov.au> or free of charge upon request. This publication contains quarterly estimates of unemployment rates and numbers for approximately 1,300 Statistical Local Areas.

Next issue

The next issue of *Australian Regional Labour Markets*, for the December quarter 2002, is expected to be distributed in early February 2003.

Contact details

This brochure was prepared by the Economic and Labour Market Analysis Branch, Department of Employment and Workplace Relations, Canberra. For further information on this brochure or related statistics, contact Mark Roddam in the Labour Market Analysis Section on (02) 6121 7506.

More detailed monthly National, State and regional labour force statistics are available from the ABS. For further information on ABS labour force statistics, contact Peter Bradbury on (02) 6252 6565.
