

# LABOUR MARKET AND RELATED PAYMENTS

a monthly profile

Note: The Australian Bureau of Statistics (ABS) produces the official unemployment statistics. The figures contained in this publication are different from the ABS unemployment figures as the ABS and the Department of Employment and Workplace Relations (DEWR) use different definitions to identify the unemployed and different methods of counting (see the Appendix for more information).

This publication was produced previously by the Department of Families, Community Services and Indigenous Affairs (FaCSIA) and since October 2004 by DEWR.

This publication can be found at <http://www.workplace.gov.au/lmrp>

June 2007

Embargoed

Until 11.30 am, 25 July 2007

***Annual Subscription - \$65.00***

# CONTENTS

	<i>Page</i>
<b>Introduction</b>	1
<b>Statistical Highlights</b>	2
<b>Tables</b>	
1. Labour Market Payments - Time Series	3
2. Newstart Allowees - Derivation of the job seeker population	4
3. Youth Allowees (other) - Derivation of the job seeker population	5
4. Job seekers receiving Newstart Allowance and Youth Allowance (other) - Time Series	6
5. Job seekers receiving Newstart Allowance and Youth Allowance (other) by State	7
6. Job seekers receiving Newstart Allowance and Youth Allowance (other) by Age and Sex	8
7. Job seekers receiving Newstart Allowance and Youth Allowance (other) by Area Support Office and Customer Service Centre	9
8. Job seekers receiving Newstart Allowance and Youth Allowance (other) by Fortnightly Earnings and Sex	23
<b>Explanatory Notes</b>	24
<b>Glossary</b>	30
<b>Appendix</b>	33
<b>For More Information</b>	36

## INTRODUCTION

This publication presents statistical information on a monthly basis for the various types of labour market payments delivered by Centrelink largely on behalf of the Department of Employment and Workplace Relations (DEWR).

After the Machinery of Government (MOG) changes, announced in October 2004, responsibility for Newstart Allowance (NSA), Youth Allowance (other) (YA(o)), Mature Age Allowance (MAA), Partner Allowance (PA) and Widow Allowance (WA) was transferred to DEWR and responsibility for Youth Allowance (full-time students) (YA(FTS)) was transferred to the Department of Education, Science and Training (DEST).

This publication covers NSA and YA(o) in some detail and, to a lesser extent, MAA, PA, WA, YA(FTS) and YA (Australian Apprentices).

Table 1 provides information on the total number of NSA and YA recipients. The YA population is broken down into YA(o), YA(FTS) and YA(Australian Apprentices) categories. The total numbers of MAA, PA and WA recipients are also provided in this table.

Tables 2 and 3 show the derivation of the NSA and YA(o) job seeker populations (see the reference to job seekers in the 'Comparability of data' section of the *Explanatory Notes*). These populations are added together to derive the total number of job seekers.

Tables 4 to 8 provide information on the total job seeker population.

When using time series figures, it is important to note that changes have occurred over time to the conditions of eligibility for different payments. Details of these changes are provided in the *Explanatory Notes*.

All media inquiries should be directed to the Centrelink National Media Officer on (02) 6284 6442. For more general inquiries regarding further statistical information please refer to the last page of this publication for other contact details.

The next issue of this publication is scheduled for release on 22 August 2007.

## STATISTICAL HIGHLIGHTS – June 2007

### Between June 2006 and June 2007:

Total Newstart Allowance (NSA) recipients and Youth Allowance (other) (YA(o)) recipients **decreased by 5.3%** overall from 549,491 to 520,585 and

- ◆ decreased 4.5% for NSA from 474,125 to 452,733 and
- ◆ decreased 10.0% for YA(o) from 75,366 to 67,852.

The number of job seekers **decreased by 11.3%** overall from 367,543 to 326,164 and

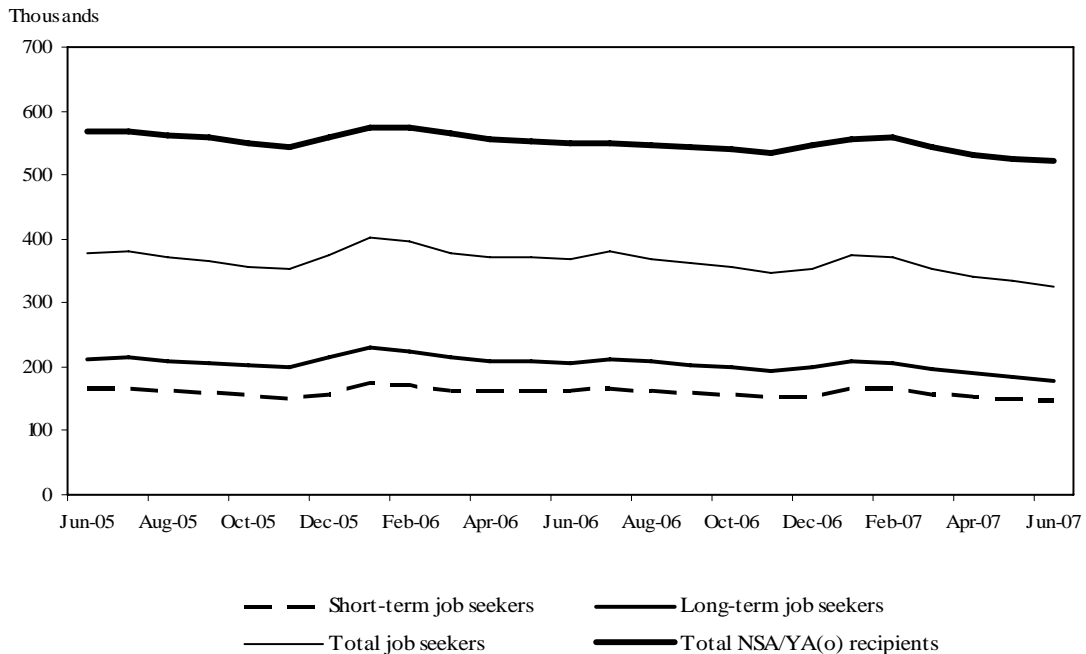
- ◆ decreased 11.2% for NSA recipients from 308,828 to 274,151 and
- ◆ decreased 11.4% for YA(o) recipients from 58,715 to 52,013.

Long-term job seekers decreased by 13.5% from 205,212 to 177,562.

Short-term job seekers decreased by 8.5% from 162,331 to 148,602.

For comparisons between DEWR unemployment labour market payment numbers and ABS labour force unemployment statistics, see Appendix.

**Newstart Allowance and Youth Allowance (other)  
June 2005 to June 2007**



**TABLE 1 - LABOUR MARKET PAYMENTS - TIME SERIES (a)**

	Newstart Allowance		Youth Allowance			Mature Age Allowance	Partner Allowance	Widow Allowance
	Long-term (b)	Total	Other	Full-time Students (c)	Australian Apprentices (d)			
February 1994 (e)	472,785	977,796	..	..	..	..	..	..
June 2005	291,977	488,910	79,564	284,926	0	21,144	72,331	44,864
July 2005	291,683	487,653	79,816	279,040	742	20,258	71,140	44,841
August 2005	291,607	485,823	77,459	285,864	1,655	19,462	70,365	45,009
September 2005	289,974	482,072	76,272	288,479	2,285	18,697	69,624	45,158
October 2005	287,468	475,490	72,915	280,308	2,416	17,939	68,919	45,287
November 2005	286,345	470,557	73,576	274,547	2,471	17,335	68,420	45,538
December 2005	290,391	476,028	84,022	233,273	2,486	16,623	67,762	45,830
January 2006	294,100	487,251	85,628	223,059	2,478	15,869	66,905	45,849
February 2006	294,250	491,955	83,559	232,189	2,731	15,111	65,681	45,760
March 2006	291,020	484,784	78,913	250,079	2,994	14,271	64,282	45,622
April 2006	288,017	479,378	76,747	260,349	3,190	13,547	62,924	45,438
May 2006	285,853	475,830	75,533	266,392	3,181	12,836	61,863	45,212
June 2006	284,288	474,125	75,366	270,081	3,323	12,110	60,829	45,096
July 2006	285,152	474,477	76,173	264,863	3,376	11,379	59,401	44,639
August 2006	284,943	472,448	72,634	271,591	3,472	10,731	58,213	44,184
September 2006	285,218	472,222	71,104	276,235	3,643	10,049	56,965	43,705
October 2006	284,276	470,340	69,511	277,061	3,740	9,430	55,683	43,349
November 2006	282,694	466,631	68,721	267,042	3,683	8,892	54,611	43,112
December 2006	284,499	469,233	76,480	226,902	3,571	8,293	53,398	42,903
January 2007	286,614	478,033	77,358	216,869	3,487	7,745	52,205	42,530
February 2007	286,113	481,343	76,036	223,780	3,715	7,287	51,251	42,370
March 2007	281,937	473,278	71,619	239,502	4,087	6,751	50,058	42,032
April 2007	277,688	463,732	68,746	250,660	4,250	6,235	48,912	41,619
May 2007	274,568	458,297	67,973	256,805	4,341	5,790	47,896	41,245
June 2007	271,439	452,733	67,852	261,197	4,435	5,284	46,709	40,886
<i>Variation May 2007 - June 2007</i>								
Number	-3,129	-5,564	-121	4,392	94	-506	-1,187	-359
Per cent	-1.1	-1.2	-0.2	1.7	2.2	-8.7	-2.5	-0.9

(a) This table presents data using the revised method of measuring the number of people receiving labour market payments introduced in July 2002. Revised historical data from May 1998 to June 2002 is in Table A (May 1998 - June 2000) and Table 1 (July 2000 - July 2002) of July 2002 publication.

(b) Long-term Newstart allowees are persons who have been receiving income support for 12 months or more.

(c) The number of full time students does not include those who have traded in their entire Youth Allowance entitlement for a loan under the Student Financial Supplement Loan Scheme. The Government announced on 24 April 2003 that no further loans would be issued under this Scheme from 1 January 2004. For further details, refer to the Explanatory Notes at the back of this publication.

(d) Australian Apprenticeships combine employment with structured training to provide a nationally recognised qualification. Australian Apprentices enter formal agreements known as either 'Training Agreements' or 'Contracts of Training' which set out the relationship between the employer and the Australian Apprentice and their respective rights and responsibilities.

(e) February 1994 data has been included for comparison purposes due to the peak in the number of persons receiving JSA/NSA at this point in time.

Note: Most of the figures in this publication are averages and have been rounded. As a result, discrepancies may occur between sums of component items and totals, and in the calculation of variations.

**TABLE 2 - NEWSTART ALLOWEES - DERIVATION OF THE JOB SEEKER POPULATION**

	May 2007	June			Variation May - June	
		Males	Females	Persons	Number	Per cent
<b>Short-term NSA Customers</b>	<b>183,729</b>	<b>117,339</b>	<b>63,955</b>	<b>181,294</b>	<b>-2,435</b>	<b>-1.3</b>
CPS recipients (a)	3,878	2,781	1,202	3,983	105	2.7
Did not receive a payment (b)	10,552	5,945	4,339	10,284	-268	-2.5
Received a payment	169,299	108,613	58,414	167,027	-2,272	-1.3
Incapacitated (c)	17,259	10,575	6,955	17,530	271	1.6
Training	10,466	6,585	4,096	10,681	215	2.1
Self-employment development (d)	595	321	212	533	-62	-10.4
Voluntary/part-time work (e)	2,968	1,368	1,733	3,101	133	4.5
Other/temporary exemptions (f)	12,540	7,564	5,179	12,743	203	1.6
<b>Short-term NSA job seekers (g)</b>	<b>125,471</b>	<b>82,200</b>	<b>40,239</b>	<b>122,439</b>	<b>-3,032</b>	<b>-2.4</b>
<b>Long-term NSA Customers</b>	<b>274,568</b>	<b>166,619</b>	<b>104,820</b>	<b>271,439</b>	<b>-3,129</b>	<b>-1.1</b>
CPS recipients (a)	8,769	5,843	2,758	8,601	-168	-1.9
Did not receive a payment (b)	9,599	5,154	4,220	9,374	-225	-2.3
Received a payment	256,200	155,622	97,842	253,464	-2,736	-1.1
Incapacitated (c)	20,321	11,591	8,856	20,447	126	0.6
Training	46,222	29,851	17,756	47,607	1,385	3.0
Self-employment development (d)	305	158	113	271	-34	-11.1
Voluntary/part-time work (e)	9,676	5,739	4,128	9,867	191	2.0
Other/temporary exemptions (f)	23,204	14,312	9,248	23,560	356	1.5
<b>Long-term NSA job seekers (g)</b>	<b>156,472</b>	<b>93,971</b>	<b>57,741</b>	<b>151,712</b>	<b>-4,760</b>	<b>-3.0</b>
<b>All NSA Customers (h)</b>	<b>458,297</b>	<b>283,958</b>	<b>168,775</b>	<b>452,733</b>	<b>-5,564</b>	<b>-1.2</b>
CPS recipients (a)	12,647	8,624	3,960	12,584	-63	-0.5
Did not receive a payment (b)	20,151	11,099	8,559	19,658	-493	-2.4
Received a payment	425,499	264,235	156,256	420,491	-5,008	-1.2
Incapacitated (c)	37,580	22,166	15,811	37,977	397	1.1
Training	56,688	36,436	21,852	58,288	1,600	2.8
Self-employment development (d)	900	479	325	804	-96	-10.7
Voluntary/part-time work (e)	12,644	7,107	5,861	12,968	324	2.6
Other/temporary exemptions (f)	35,744	21,876	14,427	36,303	559	1.6
<b>All NSA job seekers (g)</b>	<b>281,943</b>	<b>176,171</b>	<b>97,980</b>	<b>274,151</b>	<b>-7,792</b>	<b>-2.8</b>

(a) Persons with NSA eligibility who received CDEP Participant Supplement or add ons while participating in CDEP Projects.

(b) Persons who did not receive a payment due to their income and/or that of their partner. This group is often referred to as zero-paid.

(c) Activity code "incapacitated" relates to NSA recipients who have become temporarily ill or incapacitated.

(d) Those customers exempted from job search while they develop self-employment opportunities.

(e) Those customers undertaking approved full-time voluntary work or combinations of voluntary and part-time work who are not required to seek work.

(f) Includes other customers known not to have job search obligations. See 'Job seekers' in Explanatory Notes.

(g) Those customers who received a payment and generally are required to search for work. These customers form the basis of the population group in Tables 4 - 7.

(h) On 1 July 2006, the Australian Government introduced the Welfare to Work reforms. These reforms impact on the NSA population.

Notes:

- For information on short-term and long-term categories please refer to the Glossary.

- Most of the figures in this publication are averages and have been rounded. As a result, discrepancies may occur between sums of component items and totals, and in the calculation of variations.

**TABLE 3 - YOUTH ALLOWEES (OTHER) - DERIVATION OF THE JOB SEEKER POPULATION**

	May 2007	June			Variation May - June	
		Males	Females	Persons	Number	Per cent
<b>Short-term YA (other) Customers</b>	<b>32,901</b>	<b>18,086</b>	<b>15,617</b>	<b>33,703</b>	<b>802</b>	<b>2.4</b>
CPS recipients (a)	1,890	1,256	733	1,989	99	5.2
Did not receive a payment (b)	689	332	366	698	9	1.3
Received a payment	30,322	16,498	14,518	31,016	694	2.3
Part-time study & work (c)	2	0	2	2	0	0.0
Part-time study & other YA activities (d)	72	27	39	66	-6	-8.3
Incapacitated (e)	1,676	836	915	1,751	75	4.5
Training	1,241	758	508	1,266	25	2.0
Self-employment development (e)	12	5	3	8	-4	-33.3
Full-time voluntary work	0	0	0	0	0	0.0
Other non-jobseekers (e)	1,707	747	1,013	1,760	53	3.1
<b>Short-term YA (other) job seekers (f)</b>	<b>25,612</b>	<b>14,125</b>	<b>12,038</b>	<b>26,163</b>	<b>551</b>	<b>2.2</b>
<b>Long-term YA (other) Customers</b>	<b>35,072</b>	<b>16,088</b>	<b>18,061</b>	<b>34,149</b>	<b>-923</b>	<b>-2.6</b>
CPS recipients (a)	1,523	932	560	1,492	-31	-2.0
Did not receive a payment (b)	1,148	422	619	1,041	-107	-9.3
Received a payment	32,401	14,734	16,882	31,616	-785	-2.4
Part-time study & work (c)	1	0	1	1	0	0.0
Part-time study & other YA activities (d)	62	21	45	66	4	6.5
Incapacitated (e)	1,339	505	903	1,408	69	5.2
Training	2,799	1,492	1,340	2,832	33	1.2
Self-employment development (e)	8	6	5	11	3	37.5
Full-time voluntary work	0	0	0	0	0	0.0
Other non-jobseekers (e)	1,430	599	849	1,448	18	1.3
<b>Long-term YA (other) job seekers (f)</b>	<b>26,762</b>	<b>12,111</b>	<b>13,739</b>	<b>25,850</b>	<b>-912</b>	<b>-3.4</b>
<b>All YA (other) Customers (g)</b>	<b>67,973</b>	<b>34,174</b>	<b>33,678</b>	<b>67,852</b>	<b>-121</b>	<b>-0.2</b>
CPS recipients (a)	3,413	2,188	1,293	3,481	68	2.0
Did not receive a payment (b)	1,837	754	985	1,739	-98	-5.3
Received a payment	62,723	31,232	31,400	62,632	-91	-0.1
Part-time study & work (c)	3	0	3	3	0	0.0
Part-time study & other YA activities (d)	134	48	84	132	-2	-1.5
Incapacitated (e)	3,015	1,341	1,818	3,159	144	4.8
Training	4,040	2,250	1,848	4,098	58	1.4
Self-employment development (e)	20	11	8	19	-1	-5.0
Full-time voluntary work	0	0	0	0	0	0.0
Other non-jobseekers (e)	3,137	1,346	1,862	3,208	71	2.3
<b>All YA (other) job seekers (f)</b>	<b>52,374</b>	<b>26,236</b>	<b>25,777</b>	<b>52,013</b>	<b>-361</b>	<b>-0.7</b>

(a) Persons with YA eligibility who received CDEP Participant Supplement or add ons while participating in CDEP projects.

(b) Persons who did not receive a payment due to their own income and/or that of their partner or parents, where applicable. This group is often referred to as zero-paid.

(c) Those customers undertaking approved part-time study and work who are considered to have a full activity load and are not required to seek work.

(d) Those customers undertaking approved part-time study and other activities who are considered to have a full activity load and are not required to seek work.

(e) These categories are defined in the same way as in Table 2, except that those customers combining these activities with part-time study are classified under part-time study and other activities.

(f) Those customers who received a payment and generally are required to search for work. These customers form the basis of the population group in Tables 4 - 7.

(g) On 1 July 2006, the Australian Government introduced the Welfare to Work reforms. These reforms impact on the YA(o) population.

Notes:

- For information on short-term and long-term categories please refer to the Glossary.

- Most of the figures in this publication are averages and have been rounded. As a result, discrepancies may occur between sums of component items and totals, and in the calculation of variations.

**TABLE 4 - JOB SEEKERS RECEIVING NEWSTART ALLOWANCE AND YOUTH ALLOWANCE (OTHER)**  
**TIME SERIES (a)**

	Short-term	Long-term	Total
June 2005	165,755	212,595	378,350
July 2005	167,154	213,585	380,739
August 2005	162,525	209,424	371,949
September 2005	159,378	205,254	364,632
October 2005	155,525	201,678	357,203
November 2005	151,863	200,077	351,940
December 2005	157,829	215,881	373,710
January 2006	173,502	229,230	402,732
February 2006	173,305	224,048	397,353
March 2006	164,016	214,293	378,309
April 2006	161,900	209,435	371,335
May 2006	162,182	207,935	370,117
June 2006	162,331	205,212	367,543
July 2006	165,898	213,281	379,179
August 2006	161,929	207,905	369,834
September 2006	159,462	203,024	362,486
October 2006	156,815	198,967	355,782
November 2006	152,125	193,719	345,844
December 2006	153,342	201,044	354,386
January 2007	165,924	209,395	375,319
February 2007	165,581	205,384	370,965
March 2007	157,827	195,351	353,178
April 2007	153,350	188,871	342,221
May 2007	151,083	183,234	334,317
June 2007	148,602	177,562	326,164
<i>Variation May 2007 - June 2007</i>			
Number	-2,481	-5,672	-8,153
Per cent	-1.6	-3.1	-2.4

(a) This table presents data using the revised method of measuring the number of people receiving labour market payment introduced in July 2002. Revised historical data from May 1998 to June 2002 is in Table B of July 2002 publication.

Notes:

- For information on short-term and long-term categories please refer to the Glossary.

- Most of the figures in this publication are averages and have been rounded. As a result, discrepancies may occur between sums of component items and totals, and in the calculation of variations.

**TABLE 5 - JOB SEEKERS RECEIVING NEWSTART ALLOWANCE AND YOUTH ALLOWANCE (OTHER)  
BY STATE**

<i>State</i>	May 2007	June 2007	Variation May - June	
			Number	Per cent
<b>SHORT-TERM JOB SEEKERS</b>				
New South Wales	53,985	53,469	-516	-1.0
Victoria	36,574	35,753	-821	-2.2
Queensland	30,297	29,452	-845	-2.8
South Australia	12,819	12,636	-183	-1.4
Western Australia	10,184	10,179	-5	0.0
Tasmania	4,305	4,321	16	0.4
Northern Territory	1,852	1,737	-115	-6.2
Australian Capital Territory	1,067	1,055	-12	-1.1
<b>AUSTRALIA</b>	<b>151,083</b>	<b>148,602</b>	<b>-2,481</b>	<b>-1.6</b>
<b>LONG-TERM JOB SEEKERS</b>				
New South Wales	67,808	66,144	-1,664	-2.5
Victoria	46,748	45,275	-1,473	-3.2
Queensland	28,505	27,312	-1,193	-4.2
South Australia	16,914	16,465	-449	-2.7
Western Australia	10,581	10,136	-445	-4.2
Tasmania	7,946	7,792	-154	-1.9
Northern Territory	3,316	3,124	-192	-5.8
Australian Capital Territory	1,416	1,314	-102	-7.2
<b>AUSTRALIA</b>	<b>183,234</b>	<b>177,562</b>	<b>-5,672</b>	<b>-3.1</b>
<b>TOTAL JOB SEEKERS</b>				
New South Wales	121,793	119,613	-2,180	-1.8
Victoria	83,322	81,028	-2,294	-2.8
Queensland	58,802	56,764	-2,038	-3.5
South Australia	29,733	29,101	-632	-2.1
Western Australia	20,765	20,315	-450	-2.2
Tasmania	12,251	12,113	-138	-1.1
Northern Territory	5,168	4,861	-307	-5.9
Australian Capital Territory	2,483	2,369	-114	-4.6
<b>AUSTRALIA</b>	<b>334,317</b>	<b>326,164</b>	<b>-8,153</b>	<b>-2.4</b>

Note: The majority of figures in this publication are averages, and have been rounded. As a result, discrepancies may occur between sums of component items and totals. The discrepancies may also affect the calculation of the variations in Table 2, 3, 5 and 7.

**TABLE 6 - JOB SEEKERS RECEIVING NEWSTART ALLOWANCE AND YOUTH ALLOWANCE (OTHER)  
BY AGE AND SEX, AS AT JUNE 2007**

Age	Short-term job seekers		Long-term job seekers		Total job seekers	
	Number	Per cent	Number	Per cent	Number	Per cent
<b>MALES</b>						
Less than 18 years	4,468	4.6	2,225	2.1	6,693	3.3
18 - 20 years	9,658	10.0	9,884	9.3	19,542	9.7
21 - 24 years	16,213	16.8	12,577	11.9	28,790	14.2
25 - 29 years	15,304	15.9	13,006	12.3	28,310	14.0
30 - 39 years	22,946	23.8	22,532	21.2	45,478	22.5
40 - 49 years	14,742	15.3	19,083	18.0	33,825	16.7
50 - 59 years	9,317	9.7	17,341	16.3	26,658	13.2
60 years and over	3,677	3.8	9,432	8.9	13,109	6.5
<b>Total</b>	<b>96,325</b>	<b>100.0</b>	<b>106,080</b>	<b>100.0</b>	<b>202,405</b>	<b>100.0</b>
<b>FEMALES</b>						
Less than 18 years	4,643	8.9	2,893	4.0	7,536	6.1
18 - 20 years	7,394	14.1	10,846	15.2	18,240	14.7
21 - 24 years	8,640	16.5	8,845	12.4	17,485	14.1
25 - 29 years	5,496	10.5	5,939	8.3	11,435	9.2
30 - 39 years	8,203	15.7	10,093	14.1	18,296	14.8
40 - 49 years	9,118	17.4	14,695	20.6	23,813	19.2
50 - 59 years	7,034	13.5	14,306	20.0	21,340	17.2
60 years and over	1,749	3.3	3,865	5.4	5,614	4.5
<b>Total</b>	<b>52,277</b>	<b>100.0</b>	<b>71,482</b>	<b>100.0</b>	<b>123,759</b>	<b>100.0</b>
<b>PERSONS</b>						
Less than 18 years	9,111	6.1	5,118	2.9	14,229	4.4
18 - 20 years	17,052	11.5	20,730	11.7	37,782	11.6
21 - 24 years	24,853	16.7	21,422	12.1	46,275	14.2
25 - 29 years	20,800	14.0	18,945	10.7	39,745	12.2
30 - 39 years	31,149	21.0	32,625	18.4	63,774	19.6
40 - 49 years	23,860	16.1	33,778	19.0	57,638	17.7
50 - 59 years	16,351	11.0	31,647	17.8	47,998	14.7
60 years and over	5,426	3.7	13,297	7.5	18,723	5.7
<b>Total</b>	<b>148,602</b>	<b>100.0</b>	<b>177,562</b>	<b>100.0</b>	<b>326,164</b>	<b>100.0</b>

**TABLE 7 - JOB SEEKERS RECEIVING NEWSTART ALLOWANCE AND YOUTH ALLOWANCE  
(OTHER) BY AREA SUPPORT OFFICE AND CUSTOMER SERVICE CENTRE**

<i>Area Support Office and Customer Service Centre</i>	May 2007	June 2007	Variation May - June	
			Number	Per cent
<b><i>EAST COAST (SYDNEY)</i></b>				
Bondi Junction	1,094	1,056	-38	-3.5
Chatswood	968	907	-61	-6.3
Darlinghurst	1,460	1,434	-26	-1.8
Darlinghurst YSU	50	41	-9	%
Hornsby	806	790	-16	-2.0
Leichhardt	1,354	1,295	-59	-4.4
Maroubra	1,276	1,244	-32	-2.5
Marrickville	1,376	1,334	-42	-3.1
Northern Beaches	944	910	-34	-3.6
Sydney Central YSU	0	0	0	%
Other (a)	8	8	0	%
<b>Total</b>	<b>9,336</b>	<b>9,019</b>	<b>-317</b>	<b>-3.4</b>
<b><i>EAST COAST (WOLLONGONG)</i></b>				
Caringbah	1,251	1,177	-74	-5.9
Corrimal	1,202	1,162	-40	-3.3
Dapto	1,111	1,088	-23	-2.1
Hurstville	1,306	1,262	-44	-3.4
Nowra	2,137	2,115	-22	-1.0
Redfern	1,316	1,225	-91	-6.9
Rockdale	1,370	1,300	-70	-5.1
Shellharbour	1,444	1,424	-20	-1.4
Sutherland	268	286	18	6.7
Ulladulla	580	562	-18	-3.1
Wollongong	1,459	1,430	-29	-2.0
Other (a)	20	20	0	%
<b>Total</b>	<b>13,464</b>	<b>13,051</b>	<b>-413</b>	<b>-3.1</b>

Note: For footnotes see end of table.

**TABLE 7 - JOB SEEKERS RECEIVING NEWSTART ALLOWANCE AND YOUTH ALLOWANCE  
(OTHER) BY AREA SUPPORT OFFICE AND CUSTOMER SERVICE CENTRE**

<i>Area Support Office and Customer Service Centre</i>	May 2007	June 2007	Variation May - June	
			Number	Per cent
<b>HUNTER NSW</b>				
Armidale	1,116	1,132	16	1.4
Cessnock	895	882	-13	-1.5
Charlestown	1,988	1,917	-71	-3.6
Ettalong	930	908	-22	-2.4
Forster	858	871	13	1.5
Gosford*	1,628	1,574	-54	-3.3
Gunnedah	454	452	-2	-0.4
Inverell	702	691	-11	-1.6
Kempsey	1,200	1,190	-10	-0.8
Kurri Kurri	569	555	-14	-2.5
Lakehaven	1,603	1,561	-42	-2.6
Maitland	1,651	1,633	-18	-1.1
Mayfield	1,120	1,124	4	0.4
Muswellbrook	541	544	3	0.6
Nambucca Heads	993	982	-11	-1.1
Nelson Bay	565	573	8	1.4
Newcastle	1,404	1,392	-12	-0.9
Port Macquarie	1,783	1,744	-39	-2.2
Raymond Terrace	949	956	7	0.7
Singleton	295	305	10	3.4
Tamworth	1,698	1,674	-24	-1.4
Taree	1,786	1,776	-10	-0.6
The Entrance	1,359	1,370	11	0.8
Toronto	1,040	1,026	-14	-1.3
Wallsend	1,580	1,559	-21	-1.3
Wyong	664	653	-11	-1.7
Other (a)	52	47	-5	%
<b>Total</b>	<b>29,423</b>	<b>29,091</b>	<b>-332</b>	<b>-1.1</b>

Note: For footnotes see end of table.

\*On 12 May 2003 recipients transferred from Gosford NSS to Gosford CSC.

**TABLE 7 - JOB SEEKERS RECEIVING NEWSTART ALLOWANCE AND YOUTH ALLOWANCE  
(OTHER) BY AREA SUPPORT OFFICE AND CUSTOMER SERVICE CENTRE**

<i>Area Support Office and Customer Service Centre</i>	May 2007	June 2007	Variation May - June	
			Number	Per cent
<b><i>SOUTH METROPOLITAN NSW</i></b>				
Ashfield	0	0	0	%
Bankstown	3,681	3,606	-75	-2.0
Burwood*	1,524	1,462	-62	-4.1
Cabramatta	1,939	1,893	-46	-2.4
Camden	594	593	-1	-0.2
Campbelltown	2,395	2,379	-16	-0.7
Campsie	2,420	2,382	-38	-1.6
Fairfield	3,295	3,261	-34	-1.0
Ingleburn	1,200	1,232	32	2.7
Lakemba	38	47	9	%
Liverpool	3,615	3,551	-64	-1.8
Revesby	3	4	1	%
Strathfield	0	0	0	%
Other (a)	16	16	0	%
<b>Total</b>	<b>20,720</b>	<b>20,426</b>	<b>-294</b>	<b>-1.4</b>
<b><i>WEST NSW</i></b>				
Auburn	2,197	2,099	-98	-4.5
Baulkham Hills	619	588	-31	-5.0
Blacktown	2,931	2,838	-93	-3.2
Hawkesbury	845	841	-4	-0.5
Katoomba	624	616	-8	-1.3
Lithgow	714	681	-33	-4.6
Merrylands	1,720	1,671	-49	-2.8
Mt Druitt	2,544	2,549	5	0.2
Mudgee	707	714	7	1.0
Parramatta	1,688	1,625	-63	-3.7
Penrith	1,697	1,654	-43	-2.5
Ryde	878	846	-32	-3.6
Springwood	391	379	-12	-3.1
St Marys	1,689	1,651	-38	-2.2
Other (a)	31	25	-6	%
<b>Total</b>	<b>19,275</b>	<b>18,777</b>	<b>-498</b>	<b>-2.6</b>

Note: For footnotes see end of table.

\*Burwood CSC was opened on 24 October 2005 and recipients previously serviced by Ashfield and Strathfield will be serviced in Burwood.

Ashfield and Strathfield CSCs closed on 21 October 2005.

**TABLE 7 - JOB SEEKERS RECEIVING NEWSTART ALLOWANCE AND YOUTH ALLOWANCE  
(OTHER) BY AREA SUPPORT OFFICE AND CUSTOMER SERVICE CENTRE**

<i>Area Support Office and Customer Service Centre</i>	May 2007	June 2007	Variation May - June	
			Number	Per cent
<b><i>SOUTH WEST NSW</i></b>				
Albury	2,219	2,237	18	0.8
Batemans Bay	942	946	4	0.4
Bathurst	954	955	1	0.1
Bega	741	749	8	1.1
Belconnen	742	712	-30	-4.0
Bourke	440	421	-19	-4.3
Bowral	529	518	-11	-2.1
Braddon	739	685	-54	-7.3
Cooma	286	309	23	8.0
Cowra	513	497	-16	-3.1
Deniliquin	324	327	3	0.9
Dubbo	1,923	1,887	-36	-1.9
Goulburn	790	786	-4	-0.5
Griffith	602	595	-7	-1.2
Gungahlin	64	65	1	%
Lanyon	32	31	-1	%
Leeton	341	332	-9	-2.6
Narooma	396	401	5	1.3
Orange	1,094	1,066	-28	-2.6
Parkes	1,013	1,010	-3	-0.3
Queanbeyan	406	421	15	3.7
Tuggeranong	494	469	-25	-5.1
Tumut	359	360	1	0.3
Wagga	1,643	1,606	-37	-2.3
Woden	414	400	-14	-3.4
Yass	108	104	-4	-3.7
Young	435	454	19	4.4
Other (a)	21	20	-1	%
<b>Total</b>	<b>18,564</b>	<b>18,363</b>	<b>-201</b>	<b>-1.1</b>

Note: For footnotes see end of table.

**TABLE 7 - JOB SEEKERS RECEIVING NEWSTART ALLOWANCE AND YOUTH ALLOWANCE  
(OTHER) BY AREA SUPPORT OFFICE AND CUSTOMER SERVICE CENTRE**

<i>Area Support Office and Customer Service Centre</i>	May 2007	June 2007	Variation May - June	
			Number	Per cent
<b><i>NORTH-CENTRAL VICTORIA</i></b>				
Box Hill	1,552	1,496	-56	-3.6
Broadmeadows	3,546	3,380	-166	-4.7
Darebin	3,374	3,250	-124	-3.7
Echuca	548	560	12	2.2
Epping	1,691	1,604	-87	-5.1
Greensborough	1,392	1,364	-28	-2.0
Heidelberg	42	50	8	%
Lilydale	1,498	1,471	-27	-1.8
Moreland	2,218	2,095	-123	-5.5
Newmarket	1,429	1,401	-28	-2.0
Ringwood	1,479	1,415	-64	-4.3
Seymour	633	616	-17	-2.7
Shepparton	2,036	2,071	35	1.7
Sth Melbourne	679	675	-4	-0.6
Wangaratta	1,649	1,642	-7	-0.4
Windsor (VIC)	2,479	2,312	-167	-6.7
Yarra*	2,031	1,878	-153	-7.5
Other (a)	29	31	2	%
<b>Total</b>	<b>28,305</b>	<b>27,311</b>	<b>-994</b>	<b>-3.5</b>

Note: For footnotes see end of table.

\* Yarra CSC was opened on 27 June 2005. Recipients previously serviced by Fitzroy and Richmond CSCs have been transferred to Yarra CSC.

**TABLE 7 - JOB SEEKERS RECEIVING NEWSTART ALLOWANCE AND YOUTH ALLOWANCE  
(OTHER) BY AREA SUPPORT OFFICE AND CUSTOMER SERVICE CENTRE**

<i>Area Support Office and Customer Service Centre</i>	May 2007	June 2007	Variation May - June	
			Number	Per cent
<b><i>SOUTH-EAST VICTORIA</i></b>				
Bairnsdale	858	848	-10	-1.2
Belgrave*	493	462	-31	-6.3
Camberwell	937	874	-63	-6.7
Cheltenham	1,568	1,472	-96	-6.1
Cranbourne	1,101	1,087	-14	-1.3
Dandenong	2,420	2,408	-12	-0.5
Fountain Gate	2,280	2,227	-53	-2.3
Frankston	2,899	2,873	-26	-0.9
Glen Waverley	902	861	-41	-4.5
Leongatha	0	0	0	%
Mornington	484	463	-21	-4.3
Morwell	2,117	2,144	27	1.3
Oakleigh	1,647	1,612	-35	-2.1
Rosebud	832	870	38	4.6
Rowville	422	393	-29	-6.9
Sale	771	751	-20	-2.6
Springvale	2,133	1,977	-156	-7.3
Wantirna*	1,201	1,174	-27	-2.2
Warragul	475	457	-18	-3.8
Wonthaggi	646	618	-28	-4.3
Other (a)	11	12	1	%
<b>Total</b>	<b>24,197</b>	<b>23,583</b>	<b>-614</b>	<b>-2.5</b>

Note: For footnotes see end of table.

\* Belgrave and Wantirna CSCs were previously included under Knox. Knox no longer exists and has been removed from list.

Belgrave and Wantirna CSCs are shown independently.

**TABLE 7 - JOB SEEKERS RECEIVING NEWSTART ALLOWANCE AND YOUTH ALLOWANCE  
(OTHER) BY AREA SUPPORT OFFICE AND CUSTOMER SERVICE CENTRE**

<i>Area Support Office and Customer Service Centre</i>	May 2007	June 2007	Variation May - June	
			Number	Per cent
<b>WEST VICTORIA</b>				
Ararat	317	301	-16	-5.0
Ballarat	2,502	2,486	-16	-0.6
B Central*	398	394	-4	-1.0
Bendigo	2,530	2,473	-57	-2.3
Colac	464	454	-10	-2.2
Corio	1,753	1,693	-60	-3.4
Essendon (Airport West)	1,099	1,052	-47	-4.3
Footscray	1,505	1,491	-14	-0.9
Geelong	2,993	2,916	-77	-2.6
Hamilton	430	427	-3	-0.7
Horsham	759	728	-31	-4.1
Maryborough (VIC)	472	455	-17	-3.6
Melton	1,094	1,096	2	0.2
Mildura	1,713	1,674	-39	-2.3
Newport	1,098	1,042	-56	-5.1
Portland	430	420	-10	-2.3
Stawell	208	196	-12	-5.8
Sunbury	726	714	-12	-1.7
Sunshine	2,863	2,803	-60	-2.1
Swan Hill	836	862	26	3.1
Warrnambool	827	837	10	1.2
Watergardens	3,285	3,210	-75	-2.3
Werribee	2,363	2,296	-67	-2.8
Other (a)	30	26	-4	%
<b>Total</b>	<b>30,695</b>	<b>30,046</b>	<b>-649</b>	<b>-2.1</b>

Note: For footnotes see end of table.

\*On 10 October 2005 B Central was opened and recipients previously serviced by Bendigo will be serviced in B Central.

**TABLE 7 - JOB SEEKERS RECEIVING NEWSTART ALLOWANCE AND YOUTH ALLOWANCE  
(OTHER) BY AREA SUPPORT OFFICE AND CUSTOMER SERVICE CENTRE**

<i>Area Support Office and Customer Service Centre</i>	May 2007	June 2007	Variation May - June	
			Number	Per cent
<b>BRISBANE</b>				
Annerley	780	724	-56	-7.2
Bundaberg	2,591	2,558	-33	-1.3
Caboolture	1,859	1,749	-110	-5.9
Caloundra	973	940	-33	-3.4
Capalaba	570	538	-32	-5.6
Chermside	850	814	-36	-4.2
Cleveland	689	633	-56	-8.1
Fortitude Valley	1,086	1,013	-73	-6.7
Gympie	1,184	1,167	-17	-1.4
Hervey Bay	1,123	1,116	-7	-0.6
Kawana Waters	440	439	-1	-0.2
Kingaroy	788	800	12	1.5
Maroochydore	1,235	1,225	-10	-0.8
Maryborough	1,108	1,086	-22	-2.0
Mitchelton	720	691	-29	-4.0
Mt Gravatt	1,457	1,393	-64	-4.4
Nambour	912	887	-25	-2.7
Noosa	925	910	-15	-1.6
Nundah	960	929	-31	-3.2
Redcliffe	1,317	1,250	-67	-5.1
Stones Corner	1,278	1,216	-62	-4.9
Strathpine	834	810	-24	-2.9
Toowong	682	620	-62	-9.1
Wynnum	695	653	-42	-6.0
Other (a)	21	27	6	%
<b>Total</b>	<b>25,077</b>	<b>24,188</b>	<b>-889</b>	<b>-3.5</b>

Note: For footnotes see end of table.

**TABLE 7 - JOB SEEKERS RECEIVING NEWSTART ALLOWANCE AND YOUTH ALLOWANCE  
(OTHER) BY AREA SUPPORT OFFICE AND CUSTOMER SERVICE CENTRE**

<i>Area Support Office and Customer Service Centre</i>	May 2007	June 2007	Variation	
			May - June Number	Per cent
<b><i>CENTRAL &amp; NORTHERN QUEENSLAND</i></b>				
Atherton	575	553	-22	-3.8
Ayr	375	351	-24	-6.4
Biloela	129	126	-3	-2.3
Bowen	428	350	-78	-18.2
Cairns EMS (3)	2,389	2,346	-43	-1.8
Cairns FAO (3)	6	8	2	%
Cairns Ret (3)	2	2	0	%
Charters Towers	261	270	9	3.4
Edmonton	0	0	0	%
Emerald	258	250	-8	-3.1
Gladstone	701	722	21	3.0
Greenfields	4	2	-2	%
Indigenous ISC (2)	553	541	-12	-2.2
Ingham	319	302	-17	-5.3
Innisfail	535	530	-5	-0.9
Longreach (4)	75	75	0	%
Mackay	1,321	1,275	-46	-3.5
Mareeba	401	401	0	0.0
Mossman	348	331	-17	-4.9
Mt Isa	696	673	-23	-3.3
Normanton	125	121	-4	-3.2
Palm Island (2)	259	257	-2	-0.8
Rockhampton	1,663	1,573	-90	-5.4
Smithfield	2	1	-1	%
Thursday Is	146	140	-6	-4.1
Townsville City (1)	6	2	-4	%
Townsville Employment Services (1)	2,474	2,392	-82	-3.3
Townsville FAO (1)	6	6	0	%
Townsville Retirement (1)	3	3	0	%
Whitsunday	319	298	-21	-6.6
Yarrabah RASC (2)	241	259	18	7.5
Yeppoon	309	284	-25	-8.1
Other (a)	258	241	-17	-6.6
<b>Total</b>	<b>15,187</b>	<b>14,685</b>	<b>-502</b>	<b>-3.3</b>

Note: For footnotes see end of the table.

(1). As of November 2003 the above offices have changed names. Townsville Employment Services was previously known as Aitkenvale (Centrepoint), Townsville FAO was previously known as Ross River (Elizabeth St) and Townsville Retirement was previously known as Willows. Unemployment benefit recipients are being transferred from Townsville Retirement to Townsville Employment Services. Townsville City is now an access point only and recipients are being transferred within the Townsville area to the appropriate CSCs.

(2). As of 29 March 2004 Cairns YAC is now known as Yarrabah RASC, Cairns Remote is now known as Indigenous ISC and Townsville YSC is now known as Palm Island. Recipients are being transferred from these sites to better service the needs of indigenous and rural recipients.

(3). As of 28 May 2004, Cairns is now known as Cairns EMS, Earville is now known as Cairns FAO and Cairns Grafton St is now known as Cairns Ret.

(4). Longreach CSC was opened on 25 February 2005. Recipients previously serviced by Rockhampton will be serviced in Longreach.

**TABLE 7 - JOB SEEKERS RECEIVING NEWSTART ALLOWANCE AND YOUTH ALLOWANCE  
(OTHER) BY AREA SUPPORT OFFICE AND CUSTOMER SERVICE CENTRE**

<i>Area Support Office and Customer Service Centre</i>	May 2007	June 2007	Variation	
			May - June Number	Per cent
<b><i>SOUTH AUSTRALIA</i></b>				
Berri	998	961	-37	-3.7
Broken Hill	893	888	-5	-0.6
Ceduna	248	242	-6	-2.4
Cooper Pedy	141	143	2	1.4
Currie St (Adelaide)	737	737	0	0.0
Edwardstown	1,723	1,646	-77	-4.5
Elizabeth	2,598	2,585	-13	-0.5
Enfield	1,507	1,492	-15	-1.0
Gawler	1,210	1,166	-44	-3.6
Glenelg	752	726	-26	-3.5
Kadina	788	778	-10	-1.3
Kilkenny	1,703	1,656	-47	-2.8
Modbury	1,840	1,806	-34	-1.8
Mt Barker	653	608	-45	-6.9
Mt Gambier	1,309	1,312	3	0.2
Murray Bridge	810	777	-33	-4.1
Noarlunga	2,613	2,550	-63	-2.4
Norwood	1,367	1,335	-32	-2.3
Parkside	0	0	0	%
Port Adelaide	1,499	1,466	-33	-2.2
Port Augusta	615	617	2	0.3
Port Lincoln	551	539	-12	-2.2
Port Pirie	1,015	975	-40	-3.9
Salisbury	2,368	2,316	-52	-2.2
Torrensville	1,362	1,352	-10	-0.7
Victor Harbor	634	648	14	2.2
Whyalla	703	696	-7	-1.0
Other (a)	64	60	-4	%
<b>Total</b>	<b>30,701</b>	<b>30,077</b>	<b>-624</b>	<b>-2.0</b>

Note: For footnotes see end of table.

**TABLE 7 - JOB SEEKERS RECEIVING NEWSTART ALLOWANCE AND YOUTH ALLOWANCE  
(OTHER) BY AREA SUPPORT OFFICE AND CUSTOMER SERVICE CENTRE**

<i>Area Support Office and Customer Service Centre</i>	May 2007	June 2007	Variation May - June	
			Number	Per cent
<b>WESTERN AUSTRALIA</b>				
Albany	735	759	24	3.3
Armadale	713	708	-5	-0.7
Bunbury	1,374	1,336	-38	-2.8
Busselton (3)	281	266	-15	-5.3
Cannington	1,018	998	-20	-2.0
Carnarvon	207	206	-1	-0.5
Centrelink City (2)	0	0	0	%
Christmas Island	13	17	4	%
Cocos Island	47	45	-2	%
Collie	5	5	0	%
Esperance	242	243	1	0.4
Fremantle	1,078	1,000	-78	-7.2
Geraldton	1,192	1,198	6	0.5
Gosnells	712	703	-9	-1.3
Innaloo	1,147	1,082	-65	-5.7
Joondalup	950	927	-23	-2.4
Kalgoorlie	533	549	16	3.0
Karratha	254	262	8	3.1
Mandurah	951	932	-19	-2.0
Midland	1,479	1,416	-63	-4.3
Mirrabooka	1,295	1,269	-26	-2.0
Morley	1,139	1,121	-18	-1.6
Northam	468	463	-5	-1.1
Rockingham (1)	1,186	1,140	-46	-3.9
South Hedland	312	322	10	3.2
Spearwood	705	702	-3	-0.4
Victoria Park	1,274	1,207	-67	-5.3
Warwick Grove	563	524	-39	-6.9
Other (a)	329	330	1	0.3
<b>Total</b>	<b>20,202</b>	<b>19,730</b>	<b>-472</b>	<b>-2.3</b>

Note: For footnotes see end of table.

(1). As of 30 May 2003 Kwinana became a sub office of Rockingham.

(2). From 30 June 2003 processes at Centerlink City, formerly known as Milligan Street, became limited to forms lodgement and quick general enquiries only.

(3). On 14 February 2005 Busselton was established as a full-time office. Recipients previously serviced by Bunbury will be serviced in Busselton.

**TABLE 7 - JOB SEEKERS RECEIVING NEWSTART ALLOWANCE AND YOUTH ALLOWANCE  
(OTHER) BY AREA SUPPORT OFFICE AND CUSTOMER SERVICE CENTRE**

<i>Area Support Office and Customer Service Centre</i>	May 2007	June 2007	Variation May - June	
			Number	Per cent
<b>TASMANIA</b>				
Bridgewater	560	556	-4	-0.7
Burnie	1,504	1,487	-17	-1.1
Devonport	1,669	1,664	-5	-0.3
Glenorchy	1,824	1,846	22	1.2
Hobart	1,599	1,511	-88	-5.5
Huonville	484	492	8	1.7
Launceston	3,198	3,147	-51	-1.6
Mowbray	0	0	0	%
Rosny Park	933	938	5	0.5
Sorell	502	488	-14	-2.8
Other (a)	52	62	10	%
<b>Total</b>	<b>12,325</b>	<b>12,191</b>	<b>-134</b>	<b>-1.1</b>
<b>NORTH AUSTRALIA</b>				
Alice Springs	1,284	1,163	-121	-9.4
Alice Springs (Remote)*	0	0	0	%
Broome	339	341	2	0.6
Casuarina	812	819	7	0.9
SSC Nth Australia (1)	3	4	1	%
Derby	99	103	4	4.0
Katherine	528	491	-37	-7.0
Knuckey Street	531	516	-15	-2.8
Kununurra	154	148	-6	-3.9
Nhulunbuy	228	191	-37	-16.2
Palmerston	762	714	-48	-6.3
Tangentyere	186	169	-17	-9.1
Tennant Creek	145	137	-8	-5.5
Tennant Creek (Remote)	60	56	-4	%
Other (a)	748	715	-33	-4.4
<b>Total</b>	<b>5,879</b>	<b>5,567</b>	<b>-312</b>	<b>-5.3</b>

Note: For footnotes see end of table.

\* In October 2005, region codes were transferred from Alice Springs (Remote) CSC to Alice Springs CSC.

(1). On 1 July 2006, Casuarina YSC became SSC (Student Services Centre) Nth Australia.

**TABLE 7 - JOB SEEKERS RECEIVING NEWSTART ALLOWANCE AND YOUTH ALLOWANCE  
(OTHER) BY AREA SUPPORT OFFICE AND CUSTOMER SERVICE CENTRE**

<i>Area Support Office and Customer Service Centre</i>	May 2007	June 2007	Variation	
			May - June Number	Per cent
<b><i>PACIFIC CENTRAL</i></b>				
Ballina	1,024	992	-32	-3.1
Beaudesert	326	308	-18	-5.5
Beenleigh	1,428	1,413	-15	-1.1
Biggera Waters	1,359	1,276	-83	-6.1
Browns Plains	1,202	1,183	-19	-1.6
Brunswick Heads	538	534	-4	-0.7
Byron Bay	619	608	-11	-1.8
Casino	610	582	-28	-4.6
Charleville	173	178	5	2.9
Coffs Harbour	2,605	2,578	-27	-1.0
Dalby	472	466	-6	-1.3
Goodna	978	901	-77	-7.9
Goondiwindi	319	306	-13	-4.1
Grafton	1,599	1,563	-36	-2.3
Inala	1,172	1,095	-77	-6.6
Ipswich	1,799	1,746	-53	-2.9
Lightning Ridge	171	173	2	1.2
Lismore	1,876	1,830	-46	-2.5
Moree	481	497	16	3.3
Murwillumbah	570	548	-22	-3.9
Narrabri	402	403	1	0.2
Nerang	1,394	1,313	-81	-5.8
Palm Beach	1,747	1,669	-78	-4.5
Roma	137	134	-3	-2.2
Southport	1,881	1,867	-14	-0.7
Stanthorpe	349	352	3	0.9
Toowoomba	2,016	1,976	-40	-2.0
Tweed Heads	1,344	1,299	-45	-3.3
Walgett	218	226	8	3.7
Warwick	439	431	-8	-1.8
Woodridge	1,655	1,552	-103	-6.2
Other (a)	30	29	-1	%
<b>Total</b>	<b>30,933</b>	<b>30,028</b>	<b>-905</b>	<b>-2.9</b>

Note: For footnotes see end of table.

**TABLE 7 - JOB SEEKERS RECEIVING NEWSTART ALLOWANCE AND YOUTH ALLOWANCE  
(OTHER) BY AREA SUPPORT OFFICE AND CUSTOMER SERVICE CENTRE**

<i>Area Support Office and Customer Service Centre</i>	May 2007	June 2007	Variation May - June	
			Number	Per cent
<b><i>CENTRELINK CALL CENTRES*</i></b>				
Adelaide	0	1	1	%
Bendigo	2	0	-2	%
Brisbane	2	1	-1	%
Bunbury	0	0	0	%
Cairns	0	0	0	%
Cardiff	0	0	0	%
Coffs Harbour	0	0	0	%
Geelong	0	0	0	%
Gosford	0	0	0	%
Hobart	1	0	-1	%
Illawarra	1	1	0	%
Latrobe	1	1	0	%
Liverpool	0	0	0	%
Maryborough	2	0	-2	%
Moorabbin	0	0	0	%
Moreland	1	1	0	%
Newcastle	1	1	0	%
Perth	1	0	-1	%
Port Augusta	0	0	0	%
Port Macquarie	0	0	0	%
Sydney	0	0	0	%
Toowoomba	0	0	0	%
Townsville	3	3	0	%
Tweed Heads	2	1	-1	%
Warilla	0	0	0	%
Wendouree	0	0	0	%
<b>Total</b>	<b>17</b>	<b>10</b>	<b>-7</b>	<b>%</b>
NOT CODED TO AN AREA	17	21	4	%
<b>AUSTRALIA</b>	<b>334,317</b>	<b>326,164</b>	<b>-8,153</b>	<b>-2.4</b>

(a) Recipients not coded to a Customer Service Centre.

% Monthly variations in percentage terms are not included where the Customer Service Centre has a population less than 100 in both of the reported months.

\*Job seekers receiving NSA / YA (o) in the Centrelink Call Centres were previously counted in various Area Offices.

Note: The majority of figures in this publication are averages, and have been rounded. As a result, discrepancies may occur between sums of component items and totals. The discrepancies may also affect the calculation of the variations in Table 2, 3, 5 and 7.

**TABLE 8 - JOB SEEKERS RECEIVING NEWSTART ALLOWANCE AND YOUTH ALLOWANCE (OTHER)  
FORTNIGHTLY EARNINGS (%) AND SEX (a), FORTNIGHT ENDING 22 JUNE 2007**

<i>Fortnightly Earnings</i>	Short-term job seekers	Long-term job seekers	Total job seekers
<b>MALES</b>			
Did not earn an income	84.6	81.0	82.7
Earned an income	15.4	19.0	17.3
Amount earned			
\$0.01-\$62.00	0.7	0.9	0.8
\$62.01-\$142.00	2.3	2.9	2.6
\$142.01-\$236.00	2.5	3.3	2.9
\$236.01-\$316.00	2.0	2.3	2.1
Over \$316.00	8.1	9.6	8.9
Total	100.0	100.0	100.0
<b><i>Job seekers receiving NSA and YA (other)</i></b>	<b><i>96,082</i></b>	<b><i>105,355</i></b>	<b><i>201,437</i></b>
<b>FEMALES</b>			
Did not earn an income	73.7	70.5	71.8
Earned an income	26.3	29.5	28.2
Amount earned			
\$0.01-\$62.00	1.1	1.3	1.2
\$62.01-\$142.00	3.3	3.6	3.5
\$142.01-\$236.00	4.1	4.4	4.3
\$236.01-\$316.00	3.0	3.5	3.3
Over \$316.00	14.8	16.7	15.9
Total	100.0	100.0	100.0
<b><i>Job seekers receiving NSA and YA (other)</i></b>	<b><i>52,079</i></b>	<b><i>71,021</i></b>	<b><i>123,100</i></b>
<b>PERSONS</b>			
Did not earn an income	80.7	76.7	78.6
Earned an income	19.3	23.3	21.4
Amount earned			
\$0.01-\$62.00	0.8	1.1	0.9
\$62.01-\$142.00	2.6	3.2	2.9
\$142.01-\$236.00	3.1	3.7	3.4
\$236.01-\$316.00	2.3	2.8	2.6
Over \$316.00	10.5	12.5	11.6
Total	100.0	100.0	100.0
<b><i>Job seekers receiving NSA and YA (other)</i></b>	<b><i>148,161</i></b>	<b><i>176,376</i></b>	<b><i>324,537</i></b>

(a) Total figures in this table are different from Tables 2 to 7 because of different methodologies applied. Tables 2 to 7 are based on averages of weekly figures while this table is based on point in time data. See Explanatory Notes for further information.

## EXPLANATORY NOTES

### Introduction

This publication provides monthly statistical information on DEWR labour market and related payments administered by Centrelink. These Explanatory Notes provide details of the scope and methodology of the publication, as well as the policy changes which have affected the data since the publication was introduced in December 1995 by the then Department of Social Security (which became FaCS in October 1998).

Prior to December 1995, this publication was titled the *Monthly Job Search and Newstart Allowance Statistics*.

### Scope

The primary focus of the publication is to provide information on unemployed people on Newstart Allowance and Youth Allowance, with a particular focus on the total number of job seekers. The number of people on Mature Age Allowance, Partner Allowance and Widow Allowance are also reported.

### Methodology

Data in this publication relate to the average number of people who are both eligible (eg. meet 'unemployed' qualification) and entitled (eg. meet income and assets criteria) to receive a payment calculated over a reference month. Averages are calculated using figures collected for each Friday throughout the reference month.

Table 1 provides information on the total number of unemployed people on Newstart Allowance and Youth Allowance. The Youth Allowance population is split into Youth Allowance (full-time students), Youth Allowance (Australian Apprentices) and Youth Allowance (other) categories. Numbers of people on Mature Age Allowance, Partner Allowance and Widow Allowance are also provided.

Tables 2 and 3 provide a summary of the Newstart Allowance and Youth Allowance (other) populations and show the derivation of the respective job seeker populations (see the reference to job seekers in the Comparability of Data section of these Explanatory Notes). These populations are added together to derive the total number of job seekers. Tables 4 to 8 provide information on the total job seeker population.

The earnings data in Table 8 is derived using a different methodology to that of the other tables in the publication. Table 8 is based on the combined population of job seekers who are eligible for and entitled to receive Newstart Allowance or Youth Allowance (other) at the end of the second last week in the month. Thus, the data obtained from this table will not be directly comparable with those calculated using monthly averages in other tables.

## **Payment History**

### *Youth Allowance*

From 1 July 1998 Youth Allowance was introduced to provide income support to young people, including students, those looking for work, and those who are sick. Youth Allowees may be undertaking full-time study, full-time job search or a combination of approved activities. Some young people will be exempt from the activity test because of their personal circumstances, eg. illness, homelessness or major personal crisis. The Youth Allowance replaced:

- AUSTUDY for 16-24 year olds (and certain 15 year olds);
- Newstart Allowance for 16-20 year olds (and certain 15 year olds);
- Youth Training Allowance for 16-17 year olds (and certain 15 year olds);
- Sickness Allowance for 16-20 year olds (and certain 15 year olds); and
- More-than-minimum rate Family Payment for secondary students aged 16-18 not getting AUSTUDY.

Youth Allowance recipients are subject to the parental means test. Under previous arrangements, unemployed people aged 18 to 20 were not subject to the parental means test, unlike 18 to 20 year old students.

Special provisions applied for 18 to 20 year olds who were already on Newstart or Sickness Allowance at the date of announcement of Youth Allowance, and who remained on payment when Youth Allowance commenced on 1 July 1998. This group were able to remain on their existing payment and retain their existing benefits.

Youth Allowance had a significant downward effect on Newstart Allowance numbers from July 1998 and total job seeker numbers due to the parental means test.

### *Newstart Allowance*

From 1 July 1998, Newstart Allowance for 16-20 year olds (and certain 15 year olds) was replaced by Youth Allowance. Young people aged 18 to 20 years old who were on Newstart or Sickness Allowance at the date of announcement of Youth Allowance and when Youth Allowance commenced on 1 July 1998, were able to remain on Newstart Allowance.

From 20 September 1996, Job Search Allowance and Newstart Allowance were combined into one payment - Newstart Allowance - which was payable to eligible recipients aged 18 years and over and to some people who were in receipt of Job Search Allowance and aged under 18 at 31 December 1994 (see Job Search Allowance).

Prior to 20 September 1996, Newstart Allowance was payable to eligible persons over 18 years who had been registered as unemployed with the Commonwealth Employment Service (CES) for 12 months or more.

<i>Job Search Allowance</i>	<p>From 20 September 1996, the payment was combined with Newstart Allowance to form one payment called Newstart Allowance. All Job Search Allowance recipients were transferred to Newstart Allowance.</p> <p>Prior to 20 September 1996, Job Search Allowance was payable to eligible persons who had been registered as unemployed with the CES for up to 12 months. It was also payable to eligible persons who were in receipt of Job Search Allowance and under 18 years of age at 31 December 1994. Persons aged 15 to 18 years who were not receiving Job Search Allowance prior to 1 January 1995 commenced on Youth Training Allowance.</p>
<i>Sickness Allowance</i>	<p>From 17 March 1996, persons in receipt of Newstart Allowance or Youth Training Allowance who became temporarily incapacitated no longer transferred to Sickness Allowance after 13 weeks. This change had the effect of increasing total Newstart Allowance/Youth Training Allowance figures but did not affect job seeker figures as those recipients who were incapacitated were excluded from the Newstart and Youth Training job seeker populations.</p> <p>Under current arrangements, these recipients remain on their existing payments but are exempt from the activity test for the duration of their medical certificates. People who become unemployed because of illness, and those who suffer a potential loss of income due to sickness, are paid Newstart Allowance because they are unemployed.</p> <p>Sickness Allowance for 16 to 20 year olds (and certain 15 year olds) has now been replaced by Youth Allowance, which was introduced on 1 July 1998 (see Youth Allowance).</p>
<i>Partner Allowance</i>	<p>From 20 September 2003, Partner Allowance was closed to new claimants. People on Partner Allowance before this date can remain on the allowance while they remain 'current', that is retain eligibility and entitlement for the allowance.</p> <p>From 1 July 1995 Partner Allowance has only been granted to persons who are dependent partners of pensioners and allowees and who were born before 1 July 1955, have no dependent children and have little or no recent workforce experience. Other dependent partners have to qualify for an income support payment in their own right, such as Newstart Allowance.</p> <p>Partner Allowance was introduced in September 1994, and was paid to partners of persons receiving Job Search Allowance, Newstart Allowance, Sickness Allowance or Special Benefit if certain eligibility criteria were satisfied.</p>
<i>Youth Training Allowance</i>	<p>Youth Training Allowance was replaced by Youth Allowance on 1 July 1998 (see Youth Allowance).</p> <p>From 1 January 1995, eligible persons aged under 18 years who were new entrants to the job search pool were paid Youth Training Allowance. (People who were in receipt of Job Search</p>

Allowance and aged under 18 years at 31 December 1994 continued to be paid Job Search Allowance. From 20 September 1996, those young persons still being paid Job Search Allowance were transferred to Newstart Allowance.)

*Widow Allowance*

Widow Allowance, introduced on 1 January 1995, is payable to females aged 50 years or over who have become widowed, divorced or separated since turning 40 years (50 prior to 20 March 1997), if they meet a number of other criteria relating to current marital status and recent work experience. This has had a slight downwards effect on Newstart Allowance numbers from January 1995.

*Mature Age Allowance*

From 20 September 2003, Mature Age Allowance was closed to new claimants. People on Mature Age Allowance before this date can remain on the allowance while they remain 'current', that is retain eligibility and entitlement for the allowance.

From 1 July 1996, the qualification conditions for Mature Age Allowance changed for new claimants. The requirement for 12 months prior receipt of income support was reduced to 9 months for people transferring from Newstart Allowance and removed entirely for people transferring from non-activity tested payments. The requirement to have been registered as unemployed for 9 months was replaced with a requirement to have no recent workforce experience. Reporting of these new claimants commenced from September 1996.

Mature Age Allowance was introduced on 24 March 1994, and was paid to long-term unemployed persons aged 60 years and over (but below Age Pension age) who had been receiving income support for 9 months or more and who were eligible for Newstart Allowance. The introduction of Mature Age Allowance had a downwards effect on Newstart Allowance numbers from April 1994 until September 2003.

**Comparability of Data**

There have been significant changes to the data presented in this publication due to a number of events. The main changes are:

- the method of counting recipients;
- the inclusion of some CDEP recipients in the total recipient numbers;
- the introduction of Youth Allowance in July 1998;
- the way 'job seeker' is defined; and
- the way duration is calculated.

People using this data to construct time series should note the following comments.

*Definition of Recipient*

From July 2002, FaCS introduced a new method to more accurately measure the number of people receiving labour market and related payments. For those receiving labour market and related payments, their eligibility and entitlement status is administered by a payment system called Newstart Common Platform System. Within this system recipients who are both eligible and entitled to receive a payment have a determination

status of 'current'. The new method therefore counts these 'current' recipients.

The old method of counting recipients was specified to include all paid recipients - those who received a payment within a given fortnight. As compiled, however, this count excluded, from mid 1998, recipients who received a 'one-off' payment. These can occur, for instance, when a normal payment is interrupted (eg. payment is cancelled and then restored within that pay period) and a portion of the normal payment is paid.

The time series in Tables 1 and 4 reflect the revised method, as does the remainder of the publication. Revised historical data for these time series from May 1998 to June 2002 can be found in the July 2002 publication.

From July 2003 FaCS introduced a more sustainable methodology for this revised recipient count. Due to limitations in available data sources in 2002, the revised recipient count had to be derived through a complicated process. This more sustainable methodology resulted in slight differences from the recipient numbers used in previous editions.

*Community Development  
Employment Projects  
(CDEP)* From 20 March 2000, eligible participants in CDEP started receiving CDEP participant supplement and other add-ons, such as rent assistance, as part of income support payments. This added a number of new recipients to those who are normally eligible for payments reported in this publication.

*Introduction of  
Youth Allowance* The sum of the number of Newstart Allowees and Youth Training Allowees prior to July 1998 is broadly comparable with the sum of Newstart Allowees and Youth Allowees (other) after July 1998. There are two main problems in comparing these two series. The first is the exclusion of some 18 to 20 year old unemployed people due to the application of the Youth Allowance parental means test (see the Youth Allowance section under Payment History). The second is the inclusion of Sickness Allowees in the Youth Allowance (other) population.

There is greater comparability between total Newstart Allowance and Youth Training Allowance job seekers prior to July 1998 and total Newstart Allowance and Youth Allowance (other) job seekers after July 1998. This is because the Sickness Allowance group is excluded from the job seeker total. The problem, however, of the exclusion of some recipients through the application of the Youth Allowance parental means test still remains.

*Job seekers* Prior to July 1998, the job seeker category was defined by excluding all Newstart Allowees who did not receive a payment, recipients who were incapacitated, and those receiving a payment who were undertaking training. Some people who were not required to engage in job search were classified as job seekers, including people undertaking full-time voluntary work, people on jury duty and pregnant women around the time of the birth of their child.

From July 1998, the definition of job seekers has been placed on a sounder conceptual basis. It is now derived for Newstart Allowance and Youth Allowance (other) recipients by excluding all people who did not receive a payment due to their own and/or their partner's income, or where applicable, parental income, and all those known not to be required to search for work. People receiving Intensive Support Customised Assistance under Job Network arrangements are classified as job seekers although they may not always be undertaking job search. These people negotiate their activity agreement with their Job Network member.

The total number of job seekers (comparable to pre-July 1998 estimates) is calculated by adding together the number of job seekers in receipt of Newstart Allowance and Youth Allowance (other) - see the Explanatory Notes on *Youth Allowance*.

*Duration*

Following system changes in May 1998, duration has been defined according to the time a recipient spends on income support - short-term recipients are those who have been on income support for up to 12 months and long-term recipients are those who have been on income support for 12 months or more.

Prior to 1998, duration was defined according to the time a recipient was registered as unemployed - short-term recipients were people who were registered as unemployed for up to 12 months and long-term recipients were people who were registered for 12 months or more.

*Closure of Mature Age and Partner Allowances*

From 20 September 2003, Mature Age Allowance and Partner Allowance were closed to new claimants. People on these allowances before this date can remain on that allowance while they remain 'current', that is retain eligibility and entitlement for the allowance. The majority of people who would previously have claimed these payments will now claim Newstart Allowance.

**Symbols**

n.a. not available  
 .. not applicable

## GLOSSARY

<b>Activity test status</b>	The activity that a Newstart Allowance or Youth Allowance (other) recipient has agreed to undertake in order to meet the activity test. To satisfy the activity test recipients must be actively seeking and willing to take up work or undertaking activities to improve their employment prospects.
<b>Age</b>	Age in years at time of data collection.
<b>Area Support Office</b>	A Centrelink office that supports a set of Customer Service Centres for a specified area. These are generally not confined to State boundaries.
<b>Centrelink Youth Service Centre</b>	A Centrelink Youth Service Centre consists of specialised staff who provide young people with improved access to Government services and income support. This is done by offering a mainstream service, as well as specialist case management to help access educational, labour market, job search, housing, health and general welfare assistance; and by providing a regular FaCS visiting service to youth via hostels, refuges and voluntary agencies.
<b>Community Development Employment Projects (CDEP)</b>	<p>The CDEP scheme is a programme funded currently by DEWR and in the past by the Aboriginal and Torres Strait Islander Commission (ATSIC). The scheme enables Aboriginal and Torres Strait Islander community councils and other approved Aboriginal and Torres Strait Islander groups to offer work to community members in activities that assist individuals in acquiring skills which benefit the community, develop business enterprises and/or lead to unsubsidised employment. The scheme also aims to develop management and business skills in an environment conducive to the principles of self-determination.</p> <p>The CDEP Participant Supplement (CPS) is payable to eligible CDEP participants. It can be paid fortnightly or as a 12 weekly payment.</p>
<b>Customer Service Centre</b>	A Customer Service Centre set within a particular region that provides FaCSIA, DEWR and other payments and related information and services to recipients. Customer Service Centres are managed by Area Support Offices.
<b>Did not receive a payment</b>	Persons who did not receive a payment due to their own income and/or that of their partner, or parents, where applicable. This group is often referred to as 'zero paid'.
<b>Eligibility and payment status</b>	Refer to the Methodology entry in the Explanatory Notes.
<b>Fortnightly earnings</b>	Amount of income earned, derived, or received by a person for the person's own use or benefit in the previous fortnight.
<b>Incapacitated</b>	A person on Newstart Allowance or Youth Allowance (other) who has an activity test status indicating they are temporarily ill or incapacitated. Refer to the entry for Sickness Allowance in the Explanatory Notes.

<b>Job seekers</b>	A person on Newstart Allowance or Youth Allowance (other) who would usually be engaged in jobsearch. See Explanatory Notes for definition and history.
<b>Job Search Allowance (JSA)</b>	Up to 20 September 1996, Job Search Allowance was payable to CES eligible persons who had been registered as unemployed with the CES for up to 12 months. From 20 September 1996, the payment was combined with Newstart Allowance to form one payment called Newstart Allowance. See Explanatory Notes for history.
<b>Long-term recipients</b>	Persons on Newstart Allowance or Youth Allowance who have been receiving income support for 12 months or more. Duration of long-term recipients can be reset to zero if they exited from payments for more than 13 weeks.
<b>Mature Age Allowance (MAA)</b>	From 20 September 2003, Mature Age Allowance was closed to new claimants. People on Mature Age Allowance before this date can remain on the allowance while they remain 'current', that is retain eligibility and entitlement for the allowance. Mature Age Allowance, a non-activity-tested payment, is payable to unemployed people aged 60 years and over (but below Age Pension age) with little or no recent workforce experience who meet certain requirements for previous receipt of income support. See Explanatory Notes for history.
<b>Newstart Allowance (NSA)</b>	Newstart Allowance is payable to eligible unemployed persons aged 21 years and over (but below Age Pension age) who satisfy the activity test. See Explanatory Notes for history.
<b>Newstart Common Platform System (NCP)</b>	The Newstart Common Platform System (NCP) was introduced in May 1998. The NCP administers all labour market and related payments. This includes primary payments such as Newstart Allowance, Youth Allowance, Mature Age Allowance, Widow Allowance and Partner Allowance. Other payments on the NCP include Special Benefit, Sickness Allowance, Exceptional Circumstances Relief, Farm Help and Austudy.
<b>Partner Allowance (PA)</b>	<p>From 20 September 2003, Partner Allowance was closed to new claimants. People on Partner Allowance before this date can remain on the allowance while they remain 'current', that is retain eligibility and entitlement for the allowance.</p> <p>Partner Allowance, a non-activity-tested payment, is payable to persons who are dependent partners of pensioners and allowees and who were born before 1 July 1955, have no dependent children and have little or no recent workforce experience. See Explanatory Notes for history.</p>
<b>Short-term recipients</b>	Persons on Newstart Allowance or Youth Allowance who have been receiving income support for less than 12 months. Duration of short-term recipients can be reset to zero if they exited from payments for more than 6 weeks.
<b>States</b>	States and Territories of Australia derived from the postcode of the recipient's residence as held on the Centrelink payment system.

<b>Widow Allowance (WA)</b>	<p>From 1 July 2005 Widow Allowance was closed to new claimants, unless the woman was born on or before 1 July 1955.</p> <p>Widow Allowance, a non-activity tested payment, is payable to females aged 50 years or over who have become widowed, divorced or separated since turning 40 years if they have little or no recent work experience and meet a number of other criteria relating to current marital status. See Explanatory Notes for history.</p>
<b>Youth Training Allowance (YTA)</b>	<p>From 1 January 1995 eligible persons aged under 18 years who were registered as unemployed with the CES were paid Youth Training Allowance. From 1 July 1998, Youth Training Allowance was replaced by Youth Allowance. See Explanatory Notes for history.</p>
<b>Youth Allowance (YA)</b>	<p>Youth Allowance is payable to eligible full-time students aged 16 to 25 years, and to eligible unemployed persons aged 16 to 20 years who satisfy the activity test. Note, there are certain exceptions for some 15 and 25 year olds. See Explanatory Notes for history.</p> <p>Youth Allowees may be undertaking full-time study, full-time job search or a combination of approved activities. Some young people will be exempt from the activity test because of their personal circumstances, eg. illness, homelessness or major personal crisis. See the Explanatory Notes for more information.</p>
<b>Youth Allowance (other)</b>	<p>Youth Allowance recipients who are not full-time students or full-time Australian Apprentices.</p>
<b>Zero paid</b>	<p>See 'Did not receive a payment'.</p>

## APPENDIX

### COMPARISONS BETWEEN DEWR UNEMPLOYMENT LABOUR MARKET PAYMENT NUMBERS AND ABS LABOUR FORCE UNEMPLOYMENT STATISTICS

<b>Official statistics</b>	Official unemployment statistics are released by the Australian Bureau of Statistics (ABS). The ABS uses definitions recommended by the International Labour Office which have been accepted internationally as the most appropriate for the compilation of official statistics of unemployment.
<b>ABS definition</b>	The ABS unemployment statistics measure the number of persons who, for a particular reference period, did not undertake any paid work, were actively looking for work and were available to start work.
<b>DEWR Unemployment Labour Market Payment Statistics</b>	The labour market payment statistics give the number of persons who are both eligible and entitled to receive Newstart Allowance or Youth Allowance (other). The criteria for receipt of these payments do not match those the ABS uses to determine whether a person is classed as unemployed or employed for statistical purposes.
<b>Differences</b>	Care should be taken when comparing the ABS labour force and DEWR labour market payment data. There are a number of reasons why the two series cannot be directly compared.
<i>Duration</i>	<p>Both DEWR and the ABS classify long-term duration as over 12 months, but use substantially different definitions of duration:</p> <p>DEWR measures duration of <b>income support</b>. This includes not just time on unemployment benefits but time on any income support payment.</p> <p>The ABS measures length of time <b>unemployed</b> using their unemployment definition.</p> <p>DEWR unemployed recipients can have breaks without payment for up to 25 weeks but still be classified as long-term income support recipients:</p> <ul style="list-style-type: none"><li>• Recipients who do not receive a payment due to their earnings can have up to 12 weeks without a payment before they are automatically cancelled. This reduces disincentives to accept short-term work.</li><li>• Long-term recipients can have another 13 weeks off payment after payment is cancelled and still keep their long-term status if they return to income support. This means they keep access to assistance such as the Employment Entry Payment and the higher payment rate for recipients over 60.</li></ul>

For the ABS statistics, any hours of work for a period as short as two weeks count as a break from unemployment and so are enough to reset a person's unemployment duration.

The difference between these two concepts, together with the fact that DEWR recipients are able to have ongoing part-time work (see 'employment' below) mean that many unemployed recipients remain classified by DEWR as long-term recipients when they would be classified as short-term unemployed under the ABS definition.

*Seasonal adjustment* The ABS produces a seasonally adjusted series. The DEWR labour market payment numbers data are not seasonally adjusted.

*Classification* The ABS classifies a person as unemployed if he or she is aged 15 years and over, was not employed during the week before the interview, has actively looked for full-time or part-time work and is available to start work. From February 2004, people who had not actively looked for work because they were waiting to start a job within four weeks are also classified as unemployed.

The Newstart Allowance and Youth Allowance (other) series generally count people who are eligible for and entitled to receive a payment between the ages of 15 years and 64 years in the case of men and 15 to 63 years in the case of women.

*Employment* Newstart Allowance and Youth Allowance (other) recipients may be employed part-time, but within an income test limit; the ABS classifies a person as "employed" if, among other things, he or she has worked for one hour or more during the survey period.

*Timing* The timing of collections of the series are different:

- DEWR reports monthly average numbers of people both eligible for and entitled to receive Newstart Allowance and Youth Allowance (other). These monthly averages are calculated using figures collected for each Friday throughout the reference month.
- ABS numbers are based on a sample interview survey of occupants of selected dwellings covering around 0.5% of the total Australian population. These persons are interviewed during the two weeks beginning the Monday between the 6th and 12th of each month and the information obtained is based on the week before the interview takes place.

*Treatment of partners* The ABS series includes unemployed persons whose spouse is working, irrespective of income, whereas Newstart Allowance and Youth Allowance (other) recipients are subject to an income and assets test for themselves and their spouse.

*Pensioners* The ABS series includes persons being paid a pension but looking for work (eg. sole parents in receipt of Parenting Payments looking for work).

<i>Non job seekers</i>	The overall Newstart Allowance and Youth Allowance (other) series includes persons who are not required to undertake jobsearch. These persons are separately identified in Tables 2 and 3, and have then been excluded in subsequent tables. These people may be undertaking training, the development of self-employment opportunities, full-time voluntary work or a combination of voluntary and part-time work which excludes them from jobsearch obligations. They may also be incapacitated or have another temporary exemption from jobsearch.
<i>Waiting periods</i>	The ABS series includes persons who are serving a waiting period before being granted Newstart Allowance or Youth Allowance (other), or whose allowance was deferred.
<i>Survey</i>	The ABS figures are derived from a Labour Force Survey which is a sample survey, whereas the DEWR statistics are a complete count of those both eligible for and entitled to receive Newstart Allowance and Youth Allowance (other).

## FOR MORE INFORMATION

### **Labour market information**

Other statistics on recipients of labour market related payments are available on request.

In addition to Newstart and Youth Allowances, statistics are also available on Partner Allowance, Mature Age Allowance and Widow Allowance.

For publication distribution enquiries email:  
MI.WORKINGAGE.PAYMENTS@centrelink.gov.au

Written correspondence concerning this publication or statistics on labour market related payments should be addressed to:

Director  
Working Age Payments Performance and Monitoring Section  
Department of Employment and Workplace Relations  
PO Box 9879  
Canberra Mail Centre ACT 2601

or forwarded via facsimile to (02) 6275 3328.

### **Other recipient information**

Statistics relating to other recipients are also available, including recipient numbers and characteristics for the various FaCSIA pensions, benefits and family payments.

### **Other statistical outputs**

The following statistical outputs are available on request:

*Department of Families, Community Services and Indigenous Affairs (FaCSIA)*  
*Income Support Customers: a Statistical Overview*  
*1996, 1997, 1998, 1999, 2000, 2001, 2002, 2003 and 2004.*