



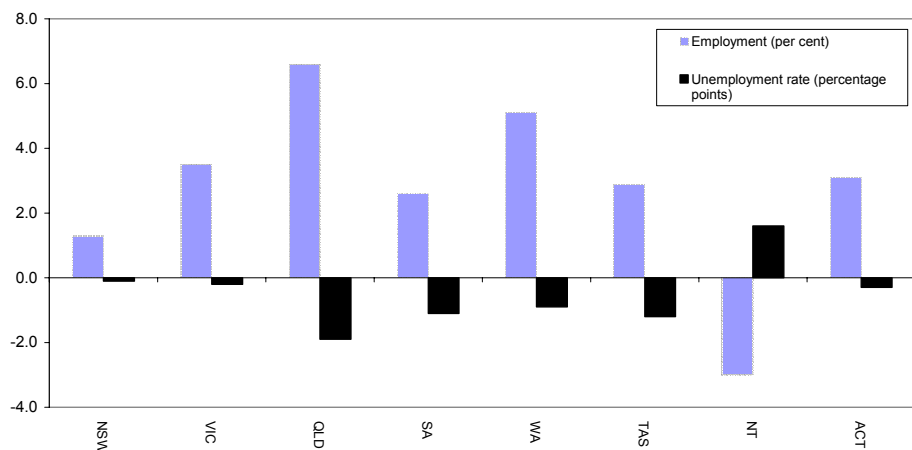
AUSTRALIAN REGIONAL LABOUR MARKETS MARCH QUARTER 2005

MAIN FINDINGS

State/Territory labour market developments

Over the year to the March quarter 2005, employment rose in all States and the ACT. The largest increase (in percentage terms) was recorded in Queensland (up by 6.6 per cent), followed by Western Australia (up by 5.1 per cent) and Victoria (up by 3.5 per cent). Over the same period, the unemployment rate fell in all States and the ACT, but rose in the Northern Territory (up by 1.6 percentage points).

CHANGE IN EMPLOYMENT AND THE UNEMPLOYMENT RATE, MARCH QUARTER 2004 TO MARCH QUARTER 2005



Developments at the ABS Labour Market Region Level

Employment increased in over 80 per cent of regions over the year to the March quarter 2005 while around 73 per cent of regions recorded a reduction in their unemployment rate. A number of regions have recorded strong employment growth as well as a significant reduction in their unemployment rate over the last 12 months. In particular:

- Sydney's Eastern Suburbs recorded a 14.1 per cent increase in employment while the unemployment rate fell by 0.6 percentage points to 3.3 per cent;
- employment in Wollongong rose by 8.6 per cent while the unemployment rate fell by 2.1 percentage points to 6.6 per cent; and
- East Perth recorded an 8.0 per cent increase in employment while the unemployment rate fell by 2.3 percentage points to 4.4 per cent.

LABOUR FORCE STATUS BY ABS LABOUR FORCE REGIONS
MARCH QUARTER 2005
Not Seasonally Adjusted

State/Region	Employed		Unemployed		Unemployment rate		Employment rate*		Participation rate	
	'000	Annual change	'000	Annual change	Annual change %	% pts	Annual change %	% pts	Annual change %	% pts
AUSTRALIA	9863.9	322.3	583.8	-49.9	5.6	-0.6	71.1	1.3	64.3	0.8
<i>Metropolitan Australia**</i>	<i>6252.6</i>	<i>222.0</i>	<i>353.7</i>	<i>-33.4</i>	<i>5.4</i>	<i>-0.7</i>	<i>72.1</i>	<i>1.6</i>	<i>65.4</i>	<i>1.0</i>
<i>Non-metropolitan Australia**</i>	<i>3611.3</i>	<i>100.3</i>	<i>230.2</i>	<i>-16.6</i>	<i>6.0</i>	<i>-0.6</i>	<i>69.4</i>	<i>0.8</i>	<i>62.4</i>	<i>0.4</i>
New South Wales	3204.0	41.6	197.7	0.4	5.8	-0.1	69.5	0.2	62.6	0.2
<i>Sydney</i>	<i>2115.3</i>	<i>36.0</i>	<i>113.5</i>	<i>-5.4</i>	<i>5.1</i>	<i>-0.3</i>	<i>71.4</i>	<i>0.5</i>	<i>64.9</i>	<i>0.3</i>
Inner Sydney and Inner Western Sydney	264.6	9.9	10.0	-2.5	3.7	-1.0	73.4	0.5	67.5	1.2
Inner Sydney	173.3	2.8	7.7	-0.5	4.3	-0.4	73.4	0.8	68.2	0.3
Eastern Suburbs	138.8	17.2	4.8	-0.2	3.3	-0.6	75.8	3.6	67.7	7.5
St George-Sutherland	247.9	17.6	12.0	4.0	4.6	1.3	77.5	1.4	71.2	5.3
Canterbury-Bankstown	128.2	-7.6	10.0	-2.1	7.2	-0.9	62.0	-2.4	54.5	-4.4
Fairfield-Liverpool/ Outer South Western Sydney	286.1	16.4	20.3	-3.2	6.6	-1.4	69.3	4.2	66.6	2.2
Fairfield-Liverpool	164.5	0.8	12.1	1.0	6.9	0.5	67.3	1.0	63.7	0.0
Central Western Sydney	129.8	-14.6	8.4	3.1	6.1	2.5	61.4	-8.4	56.2	-5.3
North Western Sydney	284.6	-3.4	19.5	-2.1	6.4	-0.6	69.8	0.3	66.1	-1.9
Lower Northern Sydney	167.4	5.9	6.7	-0.2	3.8	-0.2	76.2	0.2	68.2	1.6
Central Northern Sydney	209.9	-4.8	8.8	-1.9	4.0	-0.7	73.1	-0.3	64.8	-2.7
Northern Beaches	126.9	-3.9	3.6	-0.3	2.7	-0.1	80.5	2.3	66.5	-2.8
Gosford-Wyong	131.0	3.4	9.4	0.0	6.7	-0.2	67.4	1.5	57.6	0.8
<i>Balance of New South Wales</i>	<i>1088.7</i>	<i>5.6</i>	<i>84.2</i>	<i>5.8</i>	<i>7.2</i>	<i>0.4</i>	<i>66.1</i>	<i>-0.5</i>	<i>58.7</i>	<i>0.0</i>
Hunter	267.5	4.8	18.6	-2.3	6.5	-0.9	66.0	-0.7	59.0	-0.1
Newcastle	222.4	0.7	16.3	-2.0	6.8	-0.8	65.4	-0.4	58.8	-0.9
Illawarra and South Eastern	266.9	16.2	18.7	0.6	6.6	-0.2	66.9	2.2	58.5	2.9
Illawarra	175.3	15.8	15.1	1.2	7.9	-0.1	65.9	3.3	57.8	4.6
Wollongong	126.1	10.0	8.9	-2.2	6.6	-2.1	68.8	4.0	60.7	2.9
Richmond-Tweed/ Mid-North Coast	199.9	-12.7	22.5	5.1	10.1	2.5	61.3	-2.0	54.3	-2.5
Northern/ Far West-North Western/ Central West	227.6	7.5	15.7	-0.8	6.4	-0.5	68.2	0.7	60.6	1.1
Murray-Murrumbidgee	126.9	-10.2	8.7	3.2	6.4	2.6	69.9	-5.3	63.9	-4.0
Victoria	2460.5	83.8	152.7	0.0	5.8	-0.2	71.3	1.3	64.5	1.2
<i>Melbourne</i>	<i>1828.1</i>	<i>69.7</i>	<i>105.2</i>	<i>-5.4</i>	<i>5.4</i>	<i>-0.5</i>	<i>72.2</i>	<i>1.7</i>	<i>65.5</i>	<i>1.3</i>
Outer Western Melbourne	293.1	9.1	19.4	-2.7	6.2	-1.0	70.5	1.6	66.3	0.4
North Western Melbourne	128.2	3.6	12.8	3.4	9.1	2.1	66.0	1.6	62.2	2.3
Inner Melbourne	151.4	-8.8	8.9	0.0	5.5	0.3	73.1	-1.7	69.1	-4.7
North Eastern Melbourne	217.3	10.2	15.9	1.3	6.8	0.2	70.2	1.7	65.0	2.3
Inner Eastern Melbourne	314.4	24.3	14.3	0.5	4.3	-0.2	74.6	3.3	65.0	4.1
Southern Melbourne	199.1	-5.8	8.0	-3.0	3.9	-1.2	74.6	0.4	61.6	-3.5
Outer Eastern Melbourne	217.0	9.4	8.8	-2.1	3.9	-1.1	77.0	1.7	70.2	1.3
South Eastern Melbourne	183.5	14.3	9.1	-3.7	4.8	-2.3	71.0	4.8	66.0	2.7
Mornington Peninsula	124.2	13.3	8.0	1.0	6.1	0.1	69.9	-0.3	64.3	6.1
<i>Balance of Victoria</i>	<i>632.3</i>	<i>14.1</i>	<i>47.5</i>	<i>5.5</i>	<i>7.0</i>	<i>0.6</i>	<i>68.8</i>	<i>0.2</i>	<i>61.8</i>	<i>0.9</i>
Barwon-Western District	167.5	13.8	13.3	1.3	7.4	0.1	70.1	3.3	61.1	4.3
Central Highlands-Wimmera	94.6	6.0	6.4	0.0	6.3	-0.4	70.3	4.2	63.3	2.9
Loddon-Mallee	115.4	0.3	10.0	1.4	8.0	1.0	66.1	0.6	59.1	-0.1
Goulburn-Ovens-Murray	142.5	-5.6	7.8	1.6	5.2	1.2	70.5	-4.7	64.2	-2.7
All Gippsland	112.4	-0.4	9.9	1.1	8.1	0.9	66.5	-2.0	61.6	-0.5

* The employment rate measures total employment as a proportion of persons aged 15 - 64 years.

**The ABS defines metropolitan as those regions located within the State capital cities. Non-metropolitan is defined as those regions located outside the State capital cities as well as the two Territories.

**LABOUR FORCE STATUS BY ABS LABOUR FORCE REGIONS
MARCH QUARTER 2005
Not Seasonally Adjusted**

State/Region	Employed		Unemployed		Unemployment rate		Employment Rate*		Participation rate	
	'000	Annual change	'000	Annual change	Annual change %	% pts	Annual change %	% pts	Annual change %	% pts
Queensland	1954.2	120.1	104.1	-33.9	5.1	-1.9	72.5	2.7	65.9	1.2
Gold Coast	230.9	13.7	9.8	-6.7	4.1	-3.0	73.4	3.9	63.4	0.3
<i>Brisbane</i>	<i>919.9</i>	<i>60.0</i>	<i>50.7</i>	<i>-13.6</i>	<i>5.2</i>	<i>-1.7</i>	<i>73.7</i>	<i>3.0</i>	<i>67.9</i>	<i>1.7</i>
Brisbane City Inner Ring	241.8	16.3	14.3	-2.2	5.6	-1.2	77.7	2.9	73.3	2.4
Brisbane City Outer Ring	284.5	15.7	14.1	-4.6	4.7	-1.8	73.7	3.2	66.1	0.9
South and East Brisbane Balance	191.2	11.2	10.6	-5.7	5.2	-3.1	72.2	3.0	67.5	0.2
North and West Brisbane Balance	202.5	16.8	11.8	-1.1	5.5	-1.0	70.8	3.0	65.0	3.3
<i>Balance of Queensland</i>	<i>1034.2</i>	<i>60.1</i>	<i>53.4</i>	<i>-20.3</i>	<i>4.9</i>	<i>-2.1</i>	<i>71.5</i>	<i>2.4</i>	<i>64.3</i>	<i>0.8</i>
South and East Moreton	221.4	11.8	8.7	-6.4	3.8	-2.9	72.8	2.7	63.3	-0.1
North and West Moreton	165.6	13.7	8.1	-6.0	4.7	-3.8	71.0	4.0	61.9	1.2
Wide Bay-Burnett	100.9	13.1	6.7	-5.1	6.2	-5.6	61.6	7.9	53.0	2.7
Darling Downs-South West	124.0	-0.7	4.6	-1.1	3.6	-0.8	72.8	-0.9	64.7	-2.5
Mackay-Fitzroy-Central West	180.7	13.8	9.9	-2.9	5.2	-1.9	72.1	-0.2	68.9	2.4
Northern-North West	124.3	4.6	7.7	-0.2	5.8	-0.4	75.8	2.1	71.3	0.7
Far North	117.5	3.9	7.6	1.4	6.1	0.9	72.9	2.0	67.4	1.3
South Australia	732.5	18.4	45.4	-7.9	5.8	-1.1	70.5	1.5	62.0	0.4
<i>Adelaide</i>	<i>538.8</i>	<i>14.1</i>	<i>36.9</i>	<i>-4.2</i>	<i>6.4</i>	<i>-0.8</i>	<i>70.3</i>	<i>1.5</i>	<i>62.0</i>	<i>0.6</i>
Northern Adelaide	166.8	12.0	10.9	-5.4	6.1	-3.4	68.8	4.7	62.9	1.9
Western Adelaide	94.8	1.4	7.4	-0.4	7.3	-0.5	67.8	0.4	56.8	0.2
Eastern Adelaide	112.0	-2.6	6.2	0.4	5.3	0.4	71.2	-2.2	61.4	-1.6
Southern Adelaide	165.1	3.4	12.4	1.3	7.0	0.6	72.7	1.4	65.0	1.3
<i>Balance of South Australia</i>	<i>193.7</i>	<i>4.3</i>	<i>8.4</i>	<i>-3.7</i>	<i>4.2</i>	<i>-1.9</i>	<i>71.3</i>	<i>1.4</i>	<i>62.0</i>	<i>-0.3</i>
Northern and Western SA	69.5	0.2	5.0	-2.1	6.8	-2.6	65.8	0.9	58.7	-1.9
Southern and Eastern SA	124.3	4.1	3.4	-1.6	2.7	-1.4	74.8	1.7	64.2	0.7
Western Australia	1021.6	49.6	56.2	-7.1	5.2	-0.9	73.1	2.1	67.3	1.4
<i>Perth</i>	<i>758.6</i>	<i>39.3</i>	<i>42.0</i>	<i>-3.4</i>	<i>5.2</i>	<i>-0.7</i>	<i>73.6</i>	<i>2.4</i>	<i>67.4</i>	<i>1.8</i>
Central Metropolitan	69.4	3.4	2.4	-1.6	3.4	-2.4	74.9	2.8	66.5	0.4
East Metropolitan	129.7	9.6	6.0	-2.6	4.4	-2.3	73.4	3.2	67.4	2.2
North Metropolitan	231.8	14.7	13.5	0.0	5.5	-0.3	76.2	3.4	69.0	2.9
South West Metropolitan	153.7	6.9	8.8	0.2	5.4	-0.1	71.3	1.2	65.5	1.6
South East Metropolitan	174.0	4.8	11.2	0.6	6.1	0.2	71.9	1.4	67.6	0.8
<i>Balance of Western Australia</i>	<i>263.0</i>	<i>10.3</i>	<i>14.2</i>	<i>-3.7</i>	<i>5.1</i>	<i>-1.5</i>	<i>71.9</i>	<i>1.3</i>	<i>66.7</i>	<i>0.3</i>
Lower Western WA	133.6	8.6	8.3	-2.1	5.9	-1.9	71.7	4.3	63.5	1.7
Remainder-Balance WA	129.4	1.7	5.9	-1.5	4.3	-1.1	72.0	-1.8	70.4	-1.2
Tasmania	217.4	6.2	13.9	-2.6	6.0	-1.2	67.1	1.1	59.5	0.2
Greater Hobart-Southern	106.2	1.4	7.2	-0.7	6.4	-0.7	65.9	-0.1	58.9	-0.4
<i>Greater Hobart</i>	<i>92.0</i>	<i>2.8</i>	<i>5.3</i>	<i>-1.4</i>	<i>5.5</i>	<i>-1.5</i>	<i>67.2</i>	<i>1.5</i>	<i>59.2</i>	<i>0.1</i>
Northern	62.6	2.1	3.6	-1.7	5.4	-2.6	68.2	0.7	60.4	-0.4
Mersey-Lyell	48.6	2.7	3.1	-0.2	5.9	-0.7	68.3	4.1	59.6	2.2
Northern Territory	93.1	-2.9	6.8	1.5	6.8	1.6	67.4	-2.9	68.7	-2.1
Australian Capital Territory	180.7	5.4	7.1	-0.4	3.8	-0.3	78.6	2.4	72.9	1.5

EXPLANATORY NOTES

Introduction

The regional labour market estimates presented in this brochure are three monthly averages derived from the Australian Bureau of Statistics (ABS) Monthly Labour Force Survey. These estimates are not adjusted to take account of seasonal and other variations and can exhibit irregular movements. They should therefore be used with caution.

Changes in this issue

Regional employment rates for the working age population have been included in this edition of *Australian Regional Labour Markets* and will now feature on an ongoing basis. The employment rate measures total employment as a proportion of the civilian population for persons aged 15 to 64.

Related information

Users may wish to refer to the DEWR *Small Area Labour Markets, Australia* publication which is available at <http://www.workplace.gov.au> or free of charge upon request. This publication contains quarterly estimates of unemployment rates and levels for approximately 1,350 Statistical Local Areas.

Next issue

The next issue of *Australian Regional Labour Markets*, for the June quarter 2005, is expected to be released in late July 2005.

Contact details

This brochure was prepared by the Economic and Labour Market Analysis Branch, Department of Employment and Workplace Relations, Canberra. For further information on this brochure or related statistics, contact Julianne Best in the Labour Market Analysis Section on (02) 6121 5861 or email julianne.best@dewr.gov.au.

More detailed monthly National, State and regional labour force statistics are available from the ABS. For further information on ABS labour force statistics, contact Peter Bradbury on (02) 6252 6565.