



AUSTRALIAN REGIONAL LABOUR MARKETS

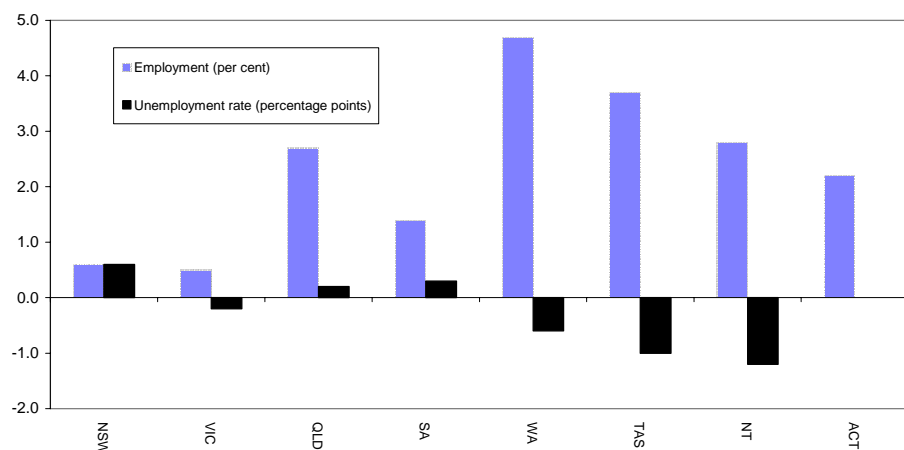
DECEMBER QUARTER 2008

State/Territory labour market developments

MAIN FINDINGS

Employment rose in all States and Territories over the year to the December quarter 2008. The largest increase (in percentage terms) was recorded in the Western Australia (up by 4.7 per cent), followed by Tasmania (up by 3.7 per cent) and the Northern Territory (up by 2.8 per cent). The unemployment rate rose in New South Wales (up by 0.6 percentage points to 5.1 per cent), South Australia (up by 0.3 percentage points to 5.2 per cent) and Queensland (up by 0.2 percentage points to 3.5 per cent) but was unchanged in the Australian Capital Territory (at 2.3 per cent). On the other hand, the unemployment rate fell over the year in the Northern Territory (down by 1.2 percentage points to 3.6 per cent), Tasmania (down by 1.0 percentage points to 4.6 per cent) and Western Australia (down by 0.6 percentage points to 2.6 per cent).

CHANGE IN EMPLOYMENT AND THE UNEMPLOYMENT RATE DECEMBER QUARTER 2007 TO DECEMBER QUARTER 2008



Developments at the ABS Labour Force Region Level

Employment increased in 72 per cent of regions over the year to the December quarter 2008, while 50 per cent of regions recorded a reduction in their unemployment rate. A number of regions have recorded strong employment growth as well as a significant reduction in their unemployment rate over the last 12 months. In particular:

- Northern-North West Queensland recorded a 17.2 per cent increase in employment while the unemployment rate fell by 1.4 percentage points to 2.5 per cent;
- East Perth recorded a 15.2 per cent increase in employment while the unemployment rate fell by 1.1 percentage points to 2.0 per cent; and
- employment in the Illawarra in New South Wales rose by 11.0 per cent while the unemployment rate fell by 2.3 percentage points to 4.8 per cent.

**LABOUR FORCE STATUS BY ABS LABOUR FORCE REGIONS
DECEMBER QUARTER 2008
Not Seasonally Adjusted**

State/Region	Employed		Unemployed		Unemployment rate		Employment rate (a)		Participation rate	
	'000	Annual change	'000	Annual change	%	Annual change (% pts)	%	Annual change (% pts)	%	Annual change (% pts)
AUSTRALIA	10 785.4	169.9	475.7	18.2	4.2	0.1	73.2	-0.1	65.2	-0.1
<i>Metropolitan Australia (b)</i>	<i>6777.4</i>	<i>105.4</i>	<i>299.1</i>	<i>21.9</i>	<i>4.2</i>	<i>0.2</i>	<i>73.7</i>	<i>0.0</i>	<i>66.1</i>	<i>0.0</i>
<i>Non-metropolitan Australia (b)</i>	<i>4008.0</i>	<i>64.5</i>	<i>176.6</i>	<i>-3.8</i>	<i>4.2</i>	<i>-0.2</i>	<i>72.4</i>	<i>-0.3</i>	<i>63.7</i>	<i>-0.3</i>
New South Wales	3408.3	18.7	181.5	21.9	5.1	0.6	70.9	-0.5	63.2	-0.2
<i>Sydney</i>	<i>2217.3</i>	<i>3.3</i>	<i>120.4</i>	<i>24.4</i>	<i>5.2</i>	<i>1.0</i>	<i>71.8</i>	<i>-0.7</i>	<i>65.1</i>	<i>-0.1</i>
Inner Sydney and Inner Western Sydney	289.5	15.3	11.2	1.5	3.7	0.3	77.4	3.1	70.8	3.1
Inner Sydney	199.2	15.7	6.7	1.2	3.3	0.3	78.4	3.3	74.0	5.2
Eastern Suburbs	142.3	2.7	2.9	0.8	2.0	0.5	76.8	-1.8	65.8	0.7
St George-Sutherland	228.1	-13.9	11.5	5.1	4.8	2.2	72.9	-2.5	63.0	-3.2
Canterbury-Bankstown	141.0	2.7	10.9	2.9	7.2	1.7	63.4	-1.5	57.4	1.3
Fairfield-Liverpool/ Outer South Western Sydney	281.0	-15.8	22.9	7.4	7.5	2.6	64.8	-4.4	63.1	-2.7
Fairfield-Liverpool	160.8	-4.2	14.0	5.0	8.0	2.8	61.9	-3.6	60.1	-0.6
Central Western Sydney	147.2	1.1	10.5	3.9	6.7	2.3	67.1	1.7	61.4	1.1
North Western Sydney	313.3	19.2	21.1	0.1	6.3	-0.3	72.1	2.0	69.5	3.1
Lower Northern Sydney	172.8	2.4	6.5	1.5	3.6	0.8	76.5	0.9	67.3	0.6
Central Northern Sydney	227.9	-2.5	8.8	1.2	3.7	0.5	73.9	-2.9	67.1	-1.3
Northern Beaches	137.7	0.9	4.5	0.6	3.2	0.4	80.7	1.5	69.5	-0.2
Gosford-Wyong	136.6	-8.7	9.6	-0.8	6.6	-0.1	67.5	-3.3	57.3	-4.6
<i>Balance of New South Wales</i>	<i>1191.0</i>	<i>15.4</i>	<i>61.1</i>	<i>-2.5</i>	<i>4.9</i>	<i>-0.2</i>	<i>69.4</i>	<i>-0.3</i>	<i>59.9</i>	<i>-0.2</i>
Hunter	294.4	6.3	13.5	-3.2	4.4	-1.1	71.6	1.2	60.7	-0.3
Newcastle	246.0	2.1	10.8	-2.9	4.2	-1.1	71.0	0.6	60.5	-1.1
Illawarra and South Eastern	292.8	19.7	14.4	-1.9	4.7	-1.0	69.0	2.3	60.3	2.7
Illawarra	192.0	19.0	9.6	-3.5	4.8	-2.3	68.2	4.7	58.6	3.7
Wollongong	134.2	10.7	7.8	-2.3	5.5	-2.0	68.6	3.7	61.1	2.8
Richmond-Tweed/ Mid-North Coast	217.3	5.2	15.3	0.8	6.6	0.2	63.0	-1.7	54.2	0.7
Northern/ Far West-North Western/ Central West	249.1	-4.9	11.5	-1.0	4.4	-0.3	71.3	-1.2	62.0	-2.3
Murray-Murrumbidgee	137.3	-11.0	6.4	2.8	4.5	2.1	74.1	-3.6	64.7	-4.7
Victoria	2644.0	12.5	118.6	-4.2	4.3	-0.2	72.4	-0.8	64.2	-1.0
<i>Melbourne</i>	<i>1958.2</i>	<i>24.7</i>	<i>84.4</i>	<i>-0.5</i>	<i>4.1</i>	<i>-0.1</i>	<i>73.1</i>	<i>-0.1</i>	<i>65.2</i>	<i>-0.4</i>
Outer Western Melbourne	309.8	7.1	17.3	-1.2	5.3	-0.5	71.4	0.5	65.3	0.0
North Western Melbourne	136.1	-3.2	5.2	-2.0	3.7	-1.2	70.2	0.9	58.8	-3.3
Inner Melbourne	175.0	6.4	6.3	2.3	3.5	1.2	77.5	1.5	73.9	2.3
North Eastern Melbourne	240.1	3.5	7.3	-2.8	2.9	-1.1	75.9	3.3	65.0	-1.0
Inner Eastern Melbourne	316.9	-8.3	14.5	2.7	4.4	0.9	71.8	-2.0	61.8	-2.2
Southern Melbourne	227.2	6.1	8.2	1.2	3.5	0.4	74.1	-1.5	66.0	0.9
Outer Eastern Melbourne	227.6	7.2	9.7	1.2	4.1	0.4	77.0	0.7	69.5	1.2
South Eastern Melbourne	190.4	4.1	10.7	-2.4	5.3	-1.3	66.7	-2.5	65.0	-0.6
Mornington Peninsula	135.1	1.7	5.3	0.4	3.8	0.3	74.7	-1.6	64.0	-0.3
<i>Balance of Victoria</i>	<i>685.8</i>	<i>-12.1</i>	<i>34.2</i>	<i>-3.7</i>	<i>4.8</i>	<i>-0.4</i>	<i>70.6</i>	<i>-2.7</i>	<i>61.6</i>	<i>-2.5</i>
Barwon-Western District	197.1	3.7	7.5	-1.5	3.7	-0.8	72.8	-4.7	65.0	-0.5
Central Highlands-Wimmera	100.3	-2.3	7.3	-0.2	6.8	0.0	67.8	-4.4	63.5	-2.7
Loddon-Mallee	133.6	3.8	8.2	-0.3	5.8	-0.3	69.8	-1.8	62.9	0.4
Goulburn-Ovens-Murray	129.5	-18.1	5.6	0.7	4.1	0.9	68.2	-3.2	54.2	-8.2
All Gippsland	125.4	0.7	5.6	-2.4	4.3	-1.8	73.2	1.1	62.0	-1.9

(a) The employment rate refers to the proportion of the working age (15-64) population who are employed.

(b) The ABS defines metropolitan as those regions located within the State capital cities. Non-metropolitan is defined as those regions located outside the State capital cities as well as the two Territories.

**LABOUR FORCE STATUS BY ABS LABOUR FORCE REGIONS
DECEMBER QUARTER 2008
Not Seasonally Adjusted**

State/Region	Employed		Unemployed		Unemployment rate		Employment Rate (a)		Participation rate	
	'000	Annual change	'000	Annual change	%	Annual change (% pts)	%	Annual change (% pts)	%	Annual change (% pts)
Queensland	2224.3	58.7	81.5	6.0	3.5	0.2	75.5	0.0	67.5	0.2
Gold Coast	260.0	2.7	11.6	4.2	4.3	1.5	73.1	-2.7	65.4	0.1
<i>Brisbane</i>	<i>1050.6</i>	<i>29.9</i>	<i>34.0</i>	<i>0.1</i>	<i>3.1</i>	<i>-0.1</i>	<i>77.0</i>	<i>0.1</i>	<i>69.4</i>	<i>0.3</i>
Brisbane City Inner Ring	279.0	2.5	8.3	0.0	2.9	0.0	81.8	-0.1	75.0	-1.1
Brisbane City Outer Ring	329.5	17.8	7.6	-2.1	2.3	-0.8	76.7	0.6	68.5	1.6
South and East Brisbane Balance	223.3	18.7	11.1	1.9	4.7	0.4	75.5	2.2	71.8	4.6
North and West Brisbane Balance	218.8	-9.1	7.0	0.3	3.1	0.2	73.1	-2.3	62.7	-4.0
<i>Balance of Queensland</i>	<i>1173.7</i>	<i>28.9</i>	<i>47.5</i>	<i>5.9</i>	<i>3.9</i>	<i>0.4</i>	<i>74.2</i>	<i>0.0</i>	<i>65.9</i>	<i>0.2</i>
South and East Moreton	249.0	-0.1	10.7	3.4	4.1	1.3	73.3	-2.6	65.4	-0.8
North and West Moreton	173.9	-14.9	8.7	1.7	4.7	1.2	70.7	-5.2	59.5	-5.9
Wide Bay-Burnett	113.4	-3.2	6.5	1.9	5.4	1.6	63.0	-2.3	53.9	-2.0
Darling Downs-South West	142.0	11.0	2.4	-2.3	1.7	-1.8	80.2	9.6	66.2	2.4
Mackay-Fitzroy-Central West	206.1	7.1	6.4	-0.5	3.0	-0.3	76.8	-2.6	70.3	0.5
Northern-North West	152.1	22.3	3.9	-1.4	2.5	-1.4	82.3	8.8	77.1	8.6
Far North	137.2	6.6	8.9	3.0	6.1	1.8	74.1	-1.0	72.0	3.0
South Australia	787.1	10.9	43.0	3.3	5.2	0.3	72.4	0.1	63.6	0.3
<i>Adelaide</i>	<i>569.1</i>	<i>-2.8</i>	<i>33.2</i>	<i>3.4</i>	<i>5.5</i>	<i>0.6</i>	<i>71.2</i>	<i>-1.1</i>	<i>62.4</i>	<i>-0.7</i>
Northern Adelaide	176.5	0.8	14.3	2.8	7.5	1.4	68.9	-1.6	64.9	0.5
Western Adelaide	99.4	-2.2	6.7	2.0	6.4	1.9	69.5	-0.8	56.7	-0.7
Eastern Adelaide	111.8	-8.7	4.1	-0.7	3.5	-0.3	70.6	-4.4	57.9	-5.4
Southern Adelaide	181.4	7.3	8.1	-0.8	4.3	-0.6	75.0	1.4	66.7	1.5
<i>Balance of South Australia</i>	<i>218.0</i>	<i>13.6</i>	<i>9.8</i>	<i>0.0</i>	<i>4.3</i>	<i>-0.3</i>	<i>75.9</i>	<i>3.4</i>	<i>67.1</i>	<i>3.3</i>
Northern and Western SA	78.5	2.1	4.9	0.4	5.9	0.3	70.6	0.3	63.0	1.1
Southern and Eastern SA	139.6	11.6	4.9	-0.5	3.4	-0.6	79.2	5.3	69.7	4.6
Western Australia	1177.2	53.1	31.0	-5.5	2.6	-0.6	77.6	1.4	69.2	0.8
<i>Perth</i>	<i>879.7</i>	<i>48.8</i>	<i>23.3</i>	<i>-3.6</i>	<i>2.6</i>	<i>-0.6</i>	<i>78.7</i>	<i>2.4</i>	<i>69.8</i>	<i>1.6</i>
Central Metropolitan	75.8	-0.6	1.8	0.5	2.3	0.6	76.8	-1.1	65.7	-2.0
East Metropolitan	156.6	20.7	3.3	-1.2	2.0	-1.1	79.5	4.3	72.8	7.1
North Metropolitan	265.2	11.3	7.9	0.7	2.9	0.1	78.4	0.4	70.7	1.2
South West Metropolitan	178.7	5.3	4.9	-2.1	2.6	-1.2	78.0	2.0	67.7	-0.8
South East Metropolitan	203.4	12.1	5.6	-1.4	2.7	-0.8	79.7	5.3	70.1	1.7
<i>Balance of Western Australia</i>	<i>297.5</i>	<i>4.3</i>	<i>7.7</i>	<i>-2.0</i>	<i>2.5</i>	<i>-0.7</i>	<i>74.6</i>	<i>-1.3</i>	<i>67.4</i>	<i>-1.4</i>
Lower Western WA	166.5	16.9	4.0	-1.4	2.3	-1.2	75.9	0.0	70.0	4.5
Remainder-Balance WA	131.0	-12.5	3.7	-0.5	2.7	-0.1	73.0	-2.9	64.4	-8.3
Tasmania	238.7	8.6	11.4	-2.1	4.6	-1.0	71.1	1.6	62.2	0.9
Greater Hobart-Southern	119.0	1.9	4.8	-1.5	3.9	-1.2	71.2	0.2	62.2	-0.5
<i>Greater Hobart</i>	<i>102.6</i>	<i>1.5</i>	<i>3.7</i>	<i>-1.8</i>	<i>3.5</i>	<i>-1.7</i>	<i>72.2</i>	<i>-0.1</i>	<i>62.6</i>	<i>-0.9</i>
Northern	69.1	5.4	2.4	-1.0	3.4	-1.7	72.9	3.4	63.1	3.2
Mersey-Lyell	50.7	1.3	4.1	0.4	7.5	0.5	68.9	2.4	61.1	1.2
Northern Territory	112.6	3.1	4.2	-1.4	3.6	-1.2	74.6	0.5	72.9	-1.0
Australian Capital Territory	193.3	4.2	4.5	0.2	2.3	0.0	80.3	0.7	72.7	0.6

(a) The employment rate refers to the proportion of the working age (15-64) population who are employed.

EXPLANATORY NOTES

Introduction

The regional labour market estimates presented in this brochure are three-month averages derived from the Australian Bureau of Statistics (ABS) Monthly Labour Force Survey. These estimates are not adjusted to take account of seasonal and other variations and can exhibit irregular movements. They should therefore be used with caution.

Related information

Users may wish to refer to the DEEWR *Small Area Labour Markets, Australia* publication, which is available, free of charge, at <http://www.workplace.gov.au> (in PDF format), or as a printed booklet upon request. This publication contains quarterly estimates of unemployment rates and levels for approximately 1350 Statistical Local Areas.

Next issue

The next issue of *Australian Regional Labour Markets*, for the March quarter 2009, is expected to be released in late April 2009.

Contact details

This brochure was prepared by the Economic, Labour Market and Education Analysis Branch, Department of Education, Employment and Workplace Relations, Canberra. For further information on this brochure or related statistics, contact Kellie Gavin in the Labour Market Analysis Section on (02) 6121 3538 or email Kellie.Gavin@deewr.gov.au.

More detailed monthly national, State and regional labour force statistics are available from the ABS. For further information on ABS labour force statistics, go to the 'Labour' theme page at the ABS website (www.abs.gov.au), or contact the ABS Labour Force Survey area on (02) 6252 6525.