

# LABOUR MARKET AND RELATED PAYMENTS

a monthly profile

Note: The Australian Bureau of Statistics (ABS) produces the official unemployment statistics. The figures contained in this publication are different from the ABS unemployment figures as the ABS and the Department of Education, Employment and Workplace Relations (DEEWR) use different definitions to identify the unemployed and different methods of counting (see the Appendix for more information).

This publication can be found at <http://www.workplace.gov.au/lmrp>

**September 2009**

Embargoed

Until 11.30 am, 21 October 2009

*Annual Subscription - \$65.00*

# CONTENTS

	<i>Page</i>
<b>Introduction</b>	1
<b>Statistical Highlights</b>	2
<b>Tables</b>	
1. Labour Market Payments - Time Series	3
2. Newstart Allowees - Derivation of the job seeker population	4
3. Youth Allowees (other) - Derivation of the job seeker population	5
4. Job seekers receiving Newstart Allowance and Youth Allowance (other) - Time Series	6
5. Job seekers receiving Newstart Allowance and Youth Allowance (other) by State	7
6. Job seekers receiving Newstart Allowance and Youth Allowance (other) by Age and Sex	8
7. Job seekers receiving Newstart Allowance and Youth Allowance (other) by Area Support Office and Customer Service Centre	9
8. Job seekers receiving Newstart Allowance and Youth Allowance (other) by Fortnightly Earnings and Sex	23
<b>Explanatory Notes</b>	24
<b>Glossary</b>	30
<b>Appendix</b>	33
<b>For More Information</b>	36

## INTRODUCTION

This publication presents statistical information on a monthly basis for the various types of labour market payments delivered by Centrelink on behalf of the Department of Education, Employment and Workplace Relations (DEEWR). This publication was produced previously by the Department of Employment and Workplace Relations (DEWR).

This publication covers NSA and YA(o) in some detail, and to a lesser extent, MAA, PA, WA, YA(FTS) and YA (Australian Apprentices).

Table 1 provides information on the total number of NSA and YA recipients. The YA population is broken down into YA(o), YA(FTS) and YA(Australian Apprentices) categories. The total numbers of MAA, PA and WA recipients are also provided in this table.

Tables 2 and 3 show the derivation of the NSA and YA(o) job seeker populations (see the reference to job seekers in the 'Comparability of data' section of the Explanatory Notes). These populations are added together to derive the total number of job seekers.

Tables 4 to 8 provide information on the total job seeker population.

When using time series figures, it is important to note that changes have occurred over time to the conditions of eligibility for different payments. Details of these changes are provided in the Explanatory Notes.

All media inquiries should be directed to the DEEWR Media Team on (02) 6240 7300 or by email to [media@deewr.gov.au](mailto:media@deewr.gov.au). For more general inquiries regarding further statistical information please refer to the last page of this publication for other contact details.

The next issue of this publication is scheduled for release on 25 November 2009.

## STATISTICAL HIGHLIGHTS – September 2009

### Between September 2008 and September 2009

Total Newstart Allowance (NSA) and Youth Allowance (other) (YA(o)) recipients **increased 32.1 per cent** overall from 492 258 to 650 427.

- ◆ NSA recipients increased 32.2 per cent from 429 426 to 567 815
- ◆ YA(o) recipients increased 31.5 per cent from 62 832 to 82 612.

The number of job seekers **increased 36.7 per cent** overall from 283 804 to 387 861.

- ◆ NSA job seekers increased 39.1 per cent from 235 796 to 327 936
- ◆ YA(o) job seekers increased 24.8 per cent from 48 008 to 59 925.

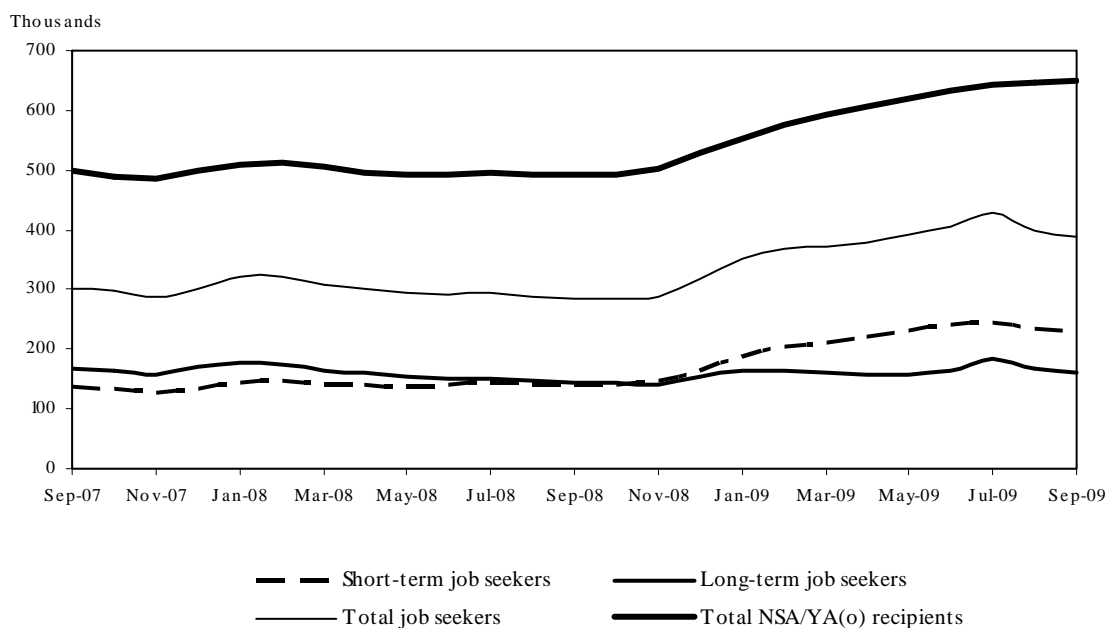
Long-term job seekers increased 11.8 per cent from 143 357 to 160 299.

Short-term job seekers increased 62.0 per cent from 140 447 to 227 562.

NOTE: There is a break in the series between June and July 2009. Post July 2009 job seeker data is not wholly comparable with previously published data (see Explanatory Notes). This change does not affect overall recipient numbers.

For comparisons between DEEWR unemployment labour market payment numbers and ABS labour force unemployment statistics, see Appendix.

**Newstart Allowance and Youth Allowance (other)  
September 2007 to September 2009**



**TABLE 1 - LABOUR MARKET PAYMENTS - TIME SERIES**

	Newstart Allowance		Other	Youth Allowance		Mature Age Allowance	Partner Allowance	Widow Allowance
	Long-term	Total		Full-time Students	Australian Apprentices			
February 1994	472,785	977,796	..	..	..	..	..	..
September 2007	266,180	435,711	62,042	265,669	4,509	3,981	45,058	41,019
October 2007	264,434	429,811	59,920	264,829	4,350	3,619	44,695	41,156
November 2007	261,930	424,168	59,967	249,546	4,093	3,242	44,358	41,278
December 2007	264,127	428,962	69,320	215,158	3,956	2,868	43,997	41,400
January 2008	266,199	437,918	69,709	206,509	3,746	2,518	43,434	41,297
February 2008	266,368	443,916	69,728	213,384	3,897	2,149	42,512	41,014
March 2008	263,759	438,786	65,889	227,301	4,094	1,797	41,528	40,729
April 2008	260,541	433,674	63,680	236,930	4,274	1,503	40,708	40,503
May 2008	257,363	429,363	63,395	245,421	4,419	1,166	39,804	40,124
June 2008	255,550	428,896	63,972	252,180	4,444	856	38,915	39,702
July 2008	254,723	429,989	65,514	248,493	4,402	586	38,109	39,321
August 2008	253,131	429,459	63,347	254,853	4,256	307	37,226	38,946
September 2008	251,987	429,426	62,832	258,973	4,018	47	36,411	38,640
October 2008	251,529	431,546	62,227	259,337	3,882	0	35,572	38,375
November 2008	251,170	437,270	64,053	247,471	3,683	0	34,733	38,142
December 2008	254,327	453,485	74,786	218,371	3,665	0	34,011	37,989
January 2009	258,403	475,183	76,613	208,624	3,506	0	33,234	37,753
February 2009	261,232	498,020	78,868	218,999	3,570	0	32,480	37,561
March 2009	262,162	514,265	78,259	238,274	3,707	0	31,802	37,364
April 2009	262,468	527,686	78,441	253,363	3,815	0	31,171	37,128
May 2009	264,337	540,729	79,787	264,591	3,873	0	30,423	36,847
June 2009	266,942	551,067	81,783	274,033	3,987	0	29,691	36,549
July 2009	270,978	559,577	84,064	272,840	4,051	0	29,218	36,442
August 2009	275,407	564,601	82,320	283,248	4,048	0	28,971	36,585
September 2009	280,138	567,815	82,612	287,783	4,073	0	28,665	36,360
<i>Variation August 2009 - September 2009</i>								
Number	4,731	3,214	292	4,535	25	0	-306	-225
Per cent	1.7	0.6	0.4	1.6	0.6	0.0	-1.1	-0.6

## Notes:

- Long-term Allowees have received income support for 12 months or more.
- The method of measuring the number of people receiving labour market payments was revised in July 2002. The July 2002 publication includes revised historical data from May 1998 to June 2002.
- February 1994 data is included as it represents a peak in the number of recipients.

**TABLE 2 - NEWSTART ALLOWEES - DERIVATION OF THE JOB SEEKER POPULATION**

	August 2009	September 2009			Variation August - September	
		Males	Females	Persons	Number	Per cent
<b>Short-term Newstart Allowees</b>	<b>289,194</b>	<b>192,842</b>	<b>94,835</b>	<b>287,677</b>	<b>-1,517</b>	<b>-0.5</b>
CPS recipients (a)	2,044	1,441	532	1,973	-71	-3.5
Did not receive a payment (b)	15,668	9,818	6,362	16,180	512	3.3
Received a payment	271,482	181,583	87,941	269,524	-1,958	-0.7
Voluntary/part-time work (c)	6,402	2,252	4,090	6,342	-60	-0.9
Other activities without job search (d)	33,946	22,652	13,866	36,518	2,572	7.6
Incapacitated (e)	16,848	10,479	6,955	17,434	586	3.5
Other/temporary exemptions (f)	15,246	8,984	6,519	15,503	257	1.7
<b>Short-term NSA job seekers (g)</b>	<b>199,040</b>	<b>137,216</b>	<b>56,511</b>	<b>193,727</b>	<b>-5,313</b>	<b>-2.7</b>
<i>Short-term NSA training/education (h)</i>	22,140	14,133	9,584	23,717	1,577	7.1
<b>Long-term Newstart Allowees</b>	<b>275,407</b>	<b>160,930</b>	<b>119,208</b>	<b>280,138</b>	<b>4,731</b>	<b>1.7</b>
CPS recipients (a)	4,813	3,157	1,459	4,616	-197	-4.1
Did not receive a payment (b)	7,933	3,776	4,594	8,370	437	5.5
Received a payment	262,661	153,997	113,155	267,152	4,491	1.7
Voluntary/part-time work (c)	18,424	7,942	10,546	18,488	64	0.3
Other activities without job search (d)	66,523	42,082	31,505	73,587	7,064	10.6
Incapacitated (e)	13,870	8,408	7,338	15,746	1,876	13.5
Other/temporary exemptions (f)	24,719	14,144	10,978	25,122	403	1.6
<b>Long-term NSA job seekers (g)</b>	<b>139,125</b>	<b>81,421</b>	<b>52,788</b>	<b>134,209</b>	<b>-4,916</b>	<b>-3.5</b>
<i>Long-term NSA training/education (h)</i>	41,157	25,058	20,443	45,501	4,344	10.6
<b>All Newstart Allowees</b>	<b>564,601</b>	<b>353,772</b>	<b>214,043</b>	<b>567,815</b>	<b>3,214</b>	<b>0.6</b>
CPS recipients (a)	6,857	4,598	1,991	6,589	-268	-3.9
Did not receive a payment (b)	23,601	13,594	10,956	24,550	949	4.0
Received a payment	534,143	335,580	201,096	536,676	2,533	0.5
Voluntary/part-time work (c)	24,826	10,194	14,636	24,830	4	0.0
Other activities without job search (d)	100,469	64,734	45,371	110,105	9,636	9.6
Incapacitated (e)	30,718	18,887	14,293	33,180	2,462	8.0
Other/temporary exemptions (f)	39,965	23,128	17,497	40,625	660	1.7
<b>All NSA job seekers (g)</b>	<b>338,165</b>	<b>218,637</b>	<b>109,299</b>	<b>327,936</b>	<b>-10,229</b>	<b>-3.0</b>
<i>All NSA training/education (h)</i>	63,297	39,191	30,027	69,218	5,921	9.4

**NOTE: There is a break in the series between June and July 2009. Post July 2009 job seeker data is not wholly comparable with previously published data (see Explanatory Notes).**

(a) Allowees eligible for NSA who received the CDEP Participant Supplement or add ons.

(b) Allowees who did not receive a payment due to their own income and/or that of their partner or parents, where applicable. This group is often referred to as zero-paid.

(c) Allowees who are not required to seek work because they are undertaking approved full-time voluntary work or a combination of voluntary and part-time work.

(d) Allowees who are undertaking one or more other activities (which may include training or education) but not job search. This includes allowees undertaking self-employment development.

(e) Allowees who are temporarily ill or incapacitated.

(f) Other allowees who are known not to have participation requirements.

(g) Allowees who received a payment and generally are required to search for work. These allowees are classified as job seekers and form the basis of the population group in Tables 4 - 7.

(h) All allowees who are undertaking training or education which may be in conjunction with job search and/or other activities. This category is a subset of all allowees who received a payment.

Notes:

– Long-term allowees have received income support for 12 months or more.

– From July 2009, all recipients with job search requirements are classified as job seekers in this report. Prior to 1 July 2009, some people with another activity (such as training) in addition to job search were classified according to that other activity.

**TABLE 3 - YOUTH ALLOWEES (OTHER) - DERIVATION OF THE JOB SEEKER POPULATION**

	August 2009	September 2009			Variation August - September	
		Males	Females	Persons	Number	Per cent
<b>Short-term Youth Allowees</b>	<b>45,500</b>	<b>25,895</b>	<b>19,472</b>	<b>45,367</b>	<b>-133</b>	<b>-0.3</b>
CPS recipients (a)	728	446	232	678	-50	-6.9
Did not receive a payment (b)	926	469	470	939	13	1.4
Received a payment	43,846	24,980	18,770	43,750	-96	-0.2
Other activities without job search (c)	5,959	3,744	2,830	6,574	615	10.3
Incapacitated (d)	1,400	764	735	1,499	99	7.1
Other/temporary exemptions (e)	1,764	800	1,042	1,842	78	4.4
<b>Short-term YA (other) job seekers (f)</b>	<b>34,723</b>	<b>19,672</b>	<b>14,163</b>	<b>33,835</b>	<b>-888</b>	<b>-2.6</b>
<i>Short-term YA (other) training/education (g)</i>	4,755	2,854	2,372	5,226	471	9.9
<b>Long-term Youth Allowees</b>	<b>36,820</b>	<b>18,379</b>	<b>18,866</b>	<b>37,245</b>	<b>425</b>	<b>1.2</b>
CPS recipients (a)	553	344	192	536	-17	-3.1
Did not receive a payment (b)	825	353	544	897	72	8.7
Received a payment	35,442	17,682	18,130	35,812	370	1.0
Other activities without job search (c)	6,604	3,716	3,613	7,329	725	11.0
Incapacitated (d)	872	412	618	1,030	158	18.1
Other/temporary exemptions (e)	1,282	527	836	1,363	81	6.3
<b>Long-term YA (other) job seekers (f)</b>	<b>26,684</b>	<b>13,027</b>	<b>13,063</b>	<b>26,090</b>	<b>-594</b>	<b>-2.2</b>
<i>Long-term YA (other) training/education (g)</i>	5,202	2,824	2,868	5,692	490	9.4
<b>All YA Youth Allowees</b>	<b>82,320</b>	<b>44,274</b>	<b>38,338</b>	<b>82,612</b>	<b>292</b>	<b>0.4</b>
CPS recipients (a)	1,281	790	424	1,214	-67	-5.2
Did not receive a payment (b)	1,751	822	1,014	1,836	85	4.9
Received a payment	79,288	42,662	36,900	79,562	274	0.3
Other activities without job search (c)	12,563	7,460	6,443	13,903	1,340	10.7
Incapacitated (d)	2,272	1,176	1,353	2,529	257	11.3
Other/temporary exemptions (e)	3,046	1,327	1,878	3,205	159	5.2
<b>All YA (other) job seekers (f)</b>	<b>61,407</b>	<b>32,699</b>	<b>27,226</b>	<b>59,925</b>	<b>-1,482</b>	<b>-2.4</b>
<i>All YA (other) training/education (g)</i>	9,957	5,678	5,240	10,918	961	9.7

**NOTE: There is a break in the series between June and July 2009. Post July 2009 job seeker data is not wholly comparable with previously published data (see Explanatory Notes).**

(a) Allowees eligible for NSA who received the CDEP Participant Supplement or add ons.

(b) Allowees who did not receive a payment due to their own income and/or that of their partner or parents, where applicable. This group is often referred to as zero-paid.

(c) Allowees who are undertaking one or more other activities (which may include training or education) but not job search. This includes allowees undertaking self-employment development.

(d) Allowees who are temporarily ill or incapacitated.

(e) Other allowees who are known not to have participation requirements.

(f) Allowees who received a payment and generally are required to search for work. These allowees are classified as job seekers and form the basis of the population group in Tables 4 - 7.

(g) All allowees who are undertaking training or education which may be in conjunction with job search and/or other activities. This category is a subset of all allowees who received a payment.

Notes:

– Long-term allowees have received income support for 12 months or more.

– From July 2009, all recipients with job search requirements are classified as job seekers in this report. Prior to 1 July 2009, some people with another activity (such as training) in addition to job search were classified according to that other activity.

**TABLE 4 - JOB SEEKERS RECEIVING NEWSTART ALLOWANCE AND YOUTH ALLOWANCE (OTHER)  
TIME SERIES**

	Short-term	Long-term	Total
September 2007	136,186	166,762	302,948
October 2007	132,332	164,716	297,048
November 2007	127,425	159,046	286,471
December 2007	132,454	169,573	302,027
January 2008	145,046	177,005	322,051
February 2008	147,610	173,316	320,926
March 2008	141,568	165,748	307,316
April 2008	139,811	160,030	299,841
May 2008	138,808	154,313	293,121
June 2008	140,066	150,517	290,583
July 2008	143,050	150,831	293,881
August 2008	141,458	146,533	287,991
September 2008	140,447	143,357	283,804
October 2008	142,254	142,368	284,622
November 2008	146,670	141,488	288,158
December 2008	163,109	154,285	317,394
January 2009	186,990	164,229	351,219
February 2009	203,173	164,752	367,925
March 2009	210,786	159,449	370,235
April 2009	221,803	157,339	379,142
May 2009	232,629	158,978	391,607
June 2009	242,074	163,434	405,508
July 2009	243,712	183,825	427,537
August 2009	233,763	165,809	399,572
September 2009	227,562	160,299	387,861
<i>Variation August 2009 - September 2009</i>			
Number	-6,201	-5,510	-11,711
Per cent	-2.7	-3.3	-2.9

**NOTE: There is a break in the series between June and July 2009. Post July 2009 job seeker data is not wholly comparable with previously published data (see Explanatory Notes).**

Notes:

- Long-term job seekers have received income support for 12 months or more.
- From July 2009, all recipients with job search requirements are classified as job seekers in this report. Prior to 1 July 2009, some people with another activity (such as training) in addition to job search were classified according to that other activity.

**TABLE 5 - JOB SEEKERS RECEIVING NEWSTART ALLOWANCE AND YOUTH ALLOWANCE (OTHER)  
BY STATE**

<i>State</i>	August 2009	September 2009	Variation	
			Number	Per cent
<b>SHORT-TERM JOB SEEKERS</b>				
New South Wales	74,633	72,650	-1,983	-2.7
Victoria	51,978	50,392	-1,586	-3.1
Queensland	56,792	54,958	-1,834	-3.2
South Australia	16,003	15,736	-267	-1.7
Western Australia	23,619	23,066	-553	-2.3
Tasmania	6,095	6,135	40	0.7
Northern Territory	2,861	2,873	12	0.4
Australian Capital Territory	1,782	1,752	-30	-1.7
<b>AUSTRALIA</b>	<b>233,763</b>	<b>227,562</b>	<b>-6,201</b>	<b>-2.7</b>
<b>LONG-TERM JOB SEEKERS</b>				
New South Wales	59,369	57,434	-1,935	-3.3
Victoria	38,165	36,822	-1,343	-3.5
Queensland	29,219	28,499	-720	-2.5
South Australia	14,820	14,259	-561	-3.8
Western Australia	11,807	11,338	-469	-4.0
Tasmania	6,367	6,286	-81	-1.3
Northern Territory	4,491	4,173	-318	-7.1
Australian Capital Territory	1,571	1,488	-83	-5.3
<b>AUSTRALIA</b>	<b>165,809</b>	<b>160,299</b>	<b>-5,510</b>	<b>-3.3</b>
<b>TOTAL JOB SEEKERS</b>				
New South Wales	134,002	130,084	-3,918	-2.9
Victoria	90,143	87,214	-2,929	-3.2
Queensland	86,011	83,457	-2,554	-3.0
South Australia	30,823	29,995	-828	-2.7
Western Australia	35,426	34,404	-1,022	-2.9
Tasmania	12,462	12,421	-41	-0.3
Northern Territory	7,352	7,046	-306	-4.2
Australian Capital Territory	3,353	3,240	-113	-3.4
<b>AUSTRALIA</b>	<b>399,572</b>	<b>387,861</b>	<b>-11,711</b>	<b>-2.9</b>

**NOTE: There is a break in the series between June and July 2009. Post July 2009 job seeker data is not wholly comparable with previously published data (see Explanatory Notes).**

Notes:

- Long-term job seekers have received income support for 12 months or more.
- From July 2009, all recipients with job search requirements are classified as job seekers in this report. Prior to 1 July 2009, some people with another activity (such as training) in addition to job search were classified according to that other activity.
- From July 2009, the National total includes job seekers who are not allocated to a particular State. Before July 2009 these recipients were included in New South Wales job seeker numbers.

**TABLE 6 - JOB SEEKERS RECEIVING NEWSTART ALLOWANCE AND YOUTH ALLOWANCE (OTHER)  
BY AGE AND SEX, AS AT SEPTEMBER 2009**

Age	Short-term job seekers		Long-term job seekers		Total job seekers	
	Number	Per cent	Number	Per cent	Number	Per cent
<b>MALES</b>						
Less than 18 years	4,508	2.9	2,081	2.2	6,589	2.6
18 - 20 years	15,165	9.7	10,945	11.6	26,110	10.4
21 - 24 years	26,775	17.1	12,921	13.7	39,696	15.8
25 - 29 years	25,519	16.3	13,345	14.1	38,864	15.5
30 - 39 years	37,287	23.8	21,973	23.3	59,260	23.6
40 - 49 years	26,032	16.6	16,603	17.6	42,635	17.0
50 - 59 years	16,123	10.3	11,503	12.2	27,626	11.0
60 years and over	5,479	3.5	5,078	5.4	10,557	4.2
<b>Total</b>	<b>156,888</b>	<b>100.0</b>	<b>94,449</b>	<b>100.0</b>	<b>251,337</b>	<b>100.0</b>
<b>FEMALES</b>						
Less than 18 years	4,049	5.7	2,258	3.4	6,307	4.6
18 - 20 years	10,114	14.3	10,805	16.4	20,919	15.3
21 - 24 years	12,725	18.0	8,688	13.2	21,413	15.7
25 - 29 years	8,306	11.8	6,302	9.6	14,608	10.7
30 - 39 years	11,242	15.9	11,213	17.0	22,455	16.4
40 - 49 years	12,668	17.9	14,029	21.3	26,697	19.6
50 - 59 years	9,400	13.3	10,045	15.3	19,445	14.2
60 years and over	2,170	3.1	2,510	3.8	4,680	3.4
<b>Total</b>	<b>70,674</b>	<b>100.0</b>	<b>65,850</b>	<b>100.0</b>	<b>136,524</b>	<b>100.0</b>
<b>PERSONS</b>						
Less than 18 years	8,557	3.8	4,339	2.7	12,896	3.3
18 - 20 years	25,279	11.1	21,750	13.6	47,029	12.1
21 - 24 years	39,500	17.4	21,609	13.5	61,109	15.8
25 - 29 years	33,825	14.9	19,647	12.3	53,472	13.8
30 - 39 years	48,529	21.3	33,186	20.7	81,715	21.1
40 - 49 years	38,700	17.0	30,632	19.1	69,332	17.9
50 - 59 years	25,523	11.2	21,548	13.4	47,071	12.1
60 years and over	7,649	3.4	7,588	4.7	15,237	3.9
<b>Total</b>	<b>227,562</b>	<b>100.0</b>	<b>160,299</b>	<b>100.0</b>	<b>387,861</b>	<b>100.0</b>

**NOTE: There is a break in the series between June and July 2009. Post July 2009 job seeker data is not wholly comparable with previously published data (see Explanatory Notes).**

Notes:

- Long-term job seekers have received income support for 12 months or more.
- From July 2009, all recipients with job search requirements are classified as job seekers in this report. Prior to 1 July 2009, some people with another activity (such as training) in addition to job search were classified according to that other activity.

**TABLE 7 - JOB SEEKERS RECEIVING NEWSTART ALLOWANCE AND YOUTH ALLOWANCE (OTHER)  
BY AREA SUPPORT OFFICE AND CUSTOMER SERVICE CENTRE**

<i>Area Support Office and Customer Service Centre</i>	August 2009	September 2009	Variation	
			August - September Number	Per cent
<b><i>SYDNEY EAST NEW SOUTH WALES</i></b>				
Bankstown	4,017	3,955	-62	-1.5
Bondi Junction	1,416	1,409	-7	-0.5
Burwood	1,970	1,910	-60	-3.0
Campsie	2,507	2,409	-98	-3.9
Caringbah	1,399	1,267	-132	-9.4
Chatswood	1,333	1,252	-81	-6.1
Corrimal	1,304	1,270	-34	-2.6
Dapto	1,371	1,347	-24	-1.8
Darlinghurst	2,039	1,958	-81	-4.0
Darlinghurst CCU	67	68	1	%
Hornsby	1,255	1,192	-63	-5.0
Hurstville	1,722	1,716	-6	-0.3
Lakemba	27	26	-1	%
Leichhardt	1,661	1,585	-76	-4.6
Maroubra	1,661	1,649	-12	-0.7
Marrickville	1,704	1,613	-91	-5.3
Northern Beaches	1,827	1,777	-50	-2.7
Redfern	1,487	1,437	-50	-3.4
Rockdale	1,550	1,577	27	1.7
Ryde	1,287	1,243	-44	-3.4
Shellharbour	1,765	1,696	-69	-3.9
Sutherland	665	693	28	4.2
Wollongong	1,482	1,435	-47	-3.2
Other (a)	15	16	1	%
<b>Total</b>	<b>35,531</b>	<b>34,500</b>	<b>-1,031</b>	<b>-2.9</b>

– Note: For footnotes see end of table.

**TABLE 7 - JOB SEEKERS RECEIVING NEWSTART ALLOWANCE AND YOUTH ALLOWANCE (OTHER)  
BY AREA SUPPORT OFFICE AND CUSTOMER SERVICE CENTRE**

<i>Area Support Office and Customer Service Centre</i>	August 2009	September 2009	Variation	
			August - September Number	Per cent
<b><i>SYDNEY WEST NEW SOUTH WALES</i></b>				
Auburn	2,225	2,219	-6	-0.3
Baulkham Hills	1,008	963	-45	-4.5
Blacktown	3,714	3,630	-84	-2.3
Cabramatta	2,422	2,316	-106	-4.4
Camden	785	755	-30	-3.8
Campbelltown	2,422	2,385	-37	-1.5
Fairfield	3,485	3,398	-87	-2.5
Hawkesbury	1,035	990	-45	-4.3
Ingleburn	1,567	1,531	-36	-2.3
Katoomba	857	801	-56	-6.5
Liverpool	4,418	4,248	-170	-3.8
Merrylands	2,083	2,040	-43	-2.1
Mt Druitt	3,281	3,189	-92	-2.8
Parramatta	2,482	2,395	-87	-3.5
Penrith	2,114	2,051	-63	-3.0
Springwood	437	422	-15	-3.4
St Marys	1,732	1,694	-38	-2.2
Other (a)	15	18	3	%
<b>Total</b>	<b>36,082</b>	<b>35,045</b>	<b>-1,037</b>	<b>-2.9</b>

– Note: For footnotes see end of table.

**TABLE 7 - JOB SEEKERS RECEIVING NEWSTART ALLOWANCE AND YOUTH ALLOWANCE (OTHER)  
BY AREA SUPPORT OFFICE AND CUSTOMER SERVICE CENTRE**

<i>Area Support Office and Customer Service Centre</i>	August 2009	September 2009	Variation	
			August - September Number	Per cent
<b><i>HUNTER NEW SOUTH WALES</i></b>				
Armidale	815	753	-62	-7.6
Cessnock	841	787	-54	-6.4
Charlestown	2,176	2,109	-67	-3.1
Comm Support Team	52	45	-7	%
Ettalong	820	804	-16	-2.0
Forster	938	912	-26	-2.8
Glen Innes	258	266	8	3.1
Gosford	1,888	1,805	-83	-4.4
Gunnedah	400	416	16	4.0
Inverell	685	666	-19	-2.8
Kempsey	1,008	947	-61	-6.1
King Street	1,331	1,280	-51	-3.8
Kurri Kurri	467	465	-2	-0.4
Lakehaven	1,895	1,839	-56	-3.0
Maitland	1,650	1,581	-69	-4.2
Mayfield	896	873	-23	-2.6
Muswellbrook	615	570	-45	-7.3
Nambucca Heads	829	785	-44	-5.3
Nelson Bay	570	560	-10	-1.8
Port Macquarie	1,719	1,659	-60	-3.5
Raymond Terrace	1,200	1,183	-17	-1.4
Singleton	317	299	-18	-5.7
Tamworth	1,677	1,579	-98	-5.8
Taree	1,753	1,708	-45	-2.6
The Entrance	1,472	1,400	-72	-4.9
Toronto	1,123	1,077	-46	-4.1
Wallsend	1,534	1,495	-39	-2.5
Woy Woy	544	500	-44	-8.1
Wyong	801	778	-23	-2.9
Other (a)	13	17	4	%
<b>Total</b>	<b>30,287</b>	<b>29,158</b>	<b>-1,129</b>	<b>-3.7</b>

– Note: For footnotes see end of table.

**TABLE 7 - JOB SEEKERS RECEIVING NEWSTART ALLOWANCE AND YOUTH ALLOWANCE (OTHER)  
BY AREA SUPPORT OFFICE AND CUSTOMER SERVICE CENTRE**

<i>Area Support Office and Customer Service Centre</i>	August 2009	September 2009	Variation	
			August - September Number	Per cent
<b><i>SOUTH WEST NEW SOUTH WALES</i></b>				
Batemans Bay	851	812	-39	-4.6
Bathurst	904	871	-33	-3.7
Bega	691	684	-7	-1.0
Belconnen	1,029	1,002	-27	-2.6
Bowral	547	538	-9	-1.6
Braddon	923	870	-53	-5.7
Cooma	335	333	-2	-0.6
Cowra	469	453	-16	-3.4
Dubbo	1,928	1,957	29	1.5
Goulburn	641	605	-36	-5.6
Griffith	652	644	-8	-1.2
Gungahlin	73	75	2	%
Lanyon	35	37	2	%
Leeton	388	384	-4	-1.0
Lithgow	559	564	5	0.9
Mudgee	602	595	-7	-1.2
Narooma	351	348	-3	-0.9
Nowra	2,104	2,118	14	0.7
Orange	1,025	992	-33	-3.2
Parkes	939	932	-7	-0.7
Queanbeyan	481	439	-42	-8.7
Tuggeranong	726	728	2	0.3
Tumut	280	285	5	1.8
Ulladulla	520	501	-19	-3.7
Wagga	1,419	1,407	-12	-0.8
Woden	536	497	-39	-7.3
Yass	101	92	-9	%
Young	423	405	-18	-4.3
Other (a)	10	9	-1	%
<b>Total</b>	<b>19,542</b>	<b>19,177</b>	<b>-365</b>	<b>-1.9</b>

– Note: For footnotes see end of table.

**TABLE 7 - JOB SEEKERS RECEIVING NEWSTART ALLOWANCE AND YOUTH ALLOWANCE (OTHER)  
BY AREA SUPPORT OFFICE AND CUSTOMER SERVICE CENTRE**

<i>Area Support Office and Customer Service Centre</i>	August 2009	September 2009	Variation	
			August - September Number	Per cent
<b><i>NORTH CENTRAL VICTORIA</i></b>				
Airport West	1,110	1,088	-22	-2.0
Albury	2,182	2,141	-41	-1.9
Box Hill	2,012	1,954	-58	-2.9
Broadmeadows	3,818	3,723	-95	-2.5
Camberwell	900	872	-28	-3.1
Darebin	3,110	2,968	-142	-4.6
Deniliquin	312	308	-4	-1.3
Echuca	496	510	14	2.8
Epping	2,073	2,008	-65	-3.1
Heidelberg	1,845	1,797	-48	-2.6
Moreland	2,338	2,234	-104	-4.4
Newmarket	1,499	1,448	-51	-3.4
Seymour	646	637	-9	-1.4
Shepparton	2,060	1,992	-68	-3.3
Sth Melbourne	776	745	-31	-4.0
Sunbury	832	807	-25	-3.0
Wangaratta	1,308	1,280	-28	-2.1
Windsor Vic	2,459	2,350	-109	-4.4
Yarra	1,806	1,792	-14	-0.8
Other (a)	23	16	-7	%
<b>Total</b>	<b>31,605</b>	<b>30,670</b>	<b>-935</b>	<b>-3.0</b>

– Note: For footnotes see end of table.

**TABLE 7 - JOB SEEKERS RECEIVING NEWSTART ALLOWANCE AND YOUTH ALLOWANCE (OTHER)  
BY AREA SUPPORT OFFICE AND CUSTOMER SERVICE CENTRE**

<i>Area Support Office and Customer Service Centre</i>	August 2009	September 2009	Variation August - September	
			Number	Per cent
<b><i>SOUTH EAST VICTORIA</i></b>				
Bairnsdale	792	798	6	0.8
Belgrave	530	504	-26	-4.9
Cheltenham	1,718	1,677	-41	-2.4
Cranbourne	1,526	1,467	-59	-3.9
Dandenong	2,696	2,554	-142	-5.3
Fountain Gate	2,170	2,139	-31	-1.4
Frankston	2,882	2,731	-151	-5.2
Glen Waverley	1,139	1,112	-27	-2.4
Hastings	601	580	-21	-3.5
Lilydale	1,514	1,503	-11	-0.7
Mornington	487	481	-6	-1.2
Morwell	2,414	2,386	-28	-1.2
Oakleigh	1,891	1,814	-77	-4.1
Pakenham	703	667	-36	-5.1
Ringwood	1,987	1,891	-96	-4.8
Rosebud	944	863	-81	-8.6
Rowville	504	495	-9	-1.8
Sale	820	794	-26	-3.2
Springvale	2,107	2,050	-57	-2.7
Wantirna	1,331	1,257	-74	-5.6
Warragul	615	581	-34	-5.5
Wonthaggi	661	617	-44	-6.7
Other (a)	8	4	-4	%
<b>Total</b>	<b>30,040</b>	<b>28,965</b>	<b>-1,075</b>	<b>-3.6</b>

– Note: For footnotes see end of table.

**TABLE 7 - JOB SEEKERS RECEIVING NEWSTART ALLOWANCE AND YOUTH ALLOWANCE (OTHER)  
BY AREA SUPPORT OFFICE AND CUSTOMER SERVICE CENTRE**

<i>Area Support Office and Customer Service Centre</i>	August 2009	September 2009	Variation August - September	
			Number	Per cent
<b>WEST VICTORIA</b>				
Ararat	237	215	-22	-9.3
Bendigo Central	464	434	-30	-6.5
Ballarat	2,860	2,757	-103	-3.6
Bendigo	2,330	2,329	-1	0.0
Colac	530	530	0	0.0
Corio	1,711	1,662	-49	-2.9
Footscray	1,482	1,418	-64	-4.3
Geelong	3,018	2,906	-112	-3.7
Hamilton	365	345	-20	-5.5
Horsham	607	604	-3	-0.5
Maryborough	456	433	-23	-5.0
Melton	1,556	1,461	-95	-6.1
Mildura	1,792	1,766	-26	-1.5
Newport	1,190	1,146	-44	-3.7
Portland	437	428	-9	-2.1
Stawell	205	201	-4	-2.0
Sunshine	2,899	2,820	-79	-2.7
Swan Hill	928	913	-15	-1.6
Warrnambool	832	813	-19	-2.3
Watergardens	3,355	3,340	-15	-0.4
Werribee	3,348	3,166	-182	-5.4
Other (a)	19	25	6	%
<b>Total</b>	<b>30,621</b>	<b>29,712</b>	<b>-909</b>	<b>-3.0</b>

– Note: For footnotes see end of table.

**TABLE 7 - JOB SEEKERS RECEIVING NEWSTART ALLOWANCE AND YOUTH ALLOWANCE (OTHER)  
BY AREA SUPPORT OFFICE AND CUSTOMER SERVICE CENTRE**

<i>Area Support Office and Customer Service Centre</i>	August 2009	September 2009	Variation	
			August - September Number	Per cent
<b><i>CENTRAL &amp; NORTHERN QUEENSLAND</i></b>				
Atherton	800	787	-13	-1.6
Ayr	369	339	-30	-8.1
Biloela	165	173	8	4.8
Bowen	325	295	-30	-9.2
Cairns Ems	4,614	4,456	-158	-3.4
Central & Northern Qld	44	14	-30	%
Charters Towers	381	364	-17	-4.5
Emerald	316	307	-9	-2.8
Gladstone	1,083	1,073	-10	-0.9
Indigenous Indigenous Service Centre	749	772	23	3.1
Ingham	285	270	-15	-5.3
Innisfail	803	781	-22	-2.7
Longreach	87	87	0	%
Mackay Employment	1,416	1,364	-52	-3.7
Mareeba	726	694	-32	-4.4
Mossman	510	505	-5	-1.0
Mt Isa	806	808	2	0.2
Normanton	110	105	-5	-4.5
Nth Peninsula Remote Area Service Centre	30	36	6	%
Palm Island	241	215	-26	-10.8
Rockhampton	2,111	2,034	-77	-3.6
Students Area CNQ	53	39	-14	%
Thursday Is	234	226	-8	-3.4
Townsville	3,290	3,220	-70	-2.1
Western Cape Remote Area Service Centre	245	255	10	4.1
Whitsunday	475	452	-23	-4.8
Yarrabah Remote Area Service Centre	562	542	-20	-3.6
Yeppoon	478	455	-23	-4.8
Other (a)	58	59	1	%
<b>Total</b>	<b>21,366</b>	<b>20,727</b>	<b>-639</b>	<b>-3.0</b>

– Note: For footnotes see end of table.

**TABLE 7 - JOB SEEKERS RECEIVING NEWSTART ALLOWANCE AND YOUTH ALLOWANCE (OTHER)  
BY AREA SUPPORT OFFICE AND CUSTOMER SERVICE CENTRE**

<i>Area Support Office and Customer Service Centre</i>	August 2009	September 2009	Variation August - September	
			Number	Per cent
<b><i>SOUTH &amp; EAST QUEENSLAND</i></b>				
Bundaberg	2,987	2,901	-86	-2.9
Caboolture	2,876	2,736	-140	-4.9
Caloundra	1,518	1,447	-71	-4.7
Cherbourg	201	211	10	5.0
Chermside	1,248	1,193	-55	-4.4
Deception Bay	687	653	-34	-4.9
Fortitude Valley	1,198	1,151	-47	-3.9
Gympie	1,364	1,284	-80	-5.9
Hervey Bay	1,779	1,729	-50	-2.8
Kawana Waters	733	702	-31	-4.2
Kingaroy	655	649	-6	-0.9
Kippa-ring	1,268	1,249	-19	-1.5
Maroochydore	1,806	1,726	-80	-4.4
Maryborough	1,295	1,240	-55	-4.2
Mitchelton	1,125	1,108	-17	-1.5
Nambour	1,192	1,126	-66	-5.5
Noosa	1,160	1,128	-32	-2.8
Nundah	1,235	1,210	-25	-2.0
Strathpine	1,614	1,575	-39	-2.4
Toowong	963	965	2	0.2
Other (a)	7	7	0	%
<b>Total</b>	<b>26,911</b>	<b>25,990</b>	<b>-921</b>	<b>-3.4</b>

– Note: For footnotes see end of table.

**TABLE 7 - JOB SEEKERS RECEIVING NEWSTART ALLOWANCE AND YOUTH ALLOWANCE (OTHER)  
BY AREA SUPPORT OFFICE AND CUSTOMER SERVICE CENTRE**

<i>Area Support Office and Customer Service Centre</i>	August 2009	September 2009	Variation August - September	
			Number	Per cent
<b><i>SOUTH &amp; WEST QUEENSLAND</i></b>				
Beenleigh	2,443	2,400	-43	-1.8
Browns Plains	2,030	1,955	-75	-3.7
Capalaba	838	804	-34	-4.1
Charleville	208	207	-1	-0.5
Cleveland	997	976	-21	-2.1
Dalby	561	565	4	0.7
Goodna	1,670	1,662	-8	-0.5
Goondiwindi	354	361	7	2.0
Inala	1,934	1,883	-51	-2.6
Ipswich	2,767	2,692	-75	-2.7
Mt Gravatt	2,071	2,010	-61	-2.9
Roma	186	180	-6	-3.2
South Brisbane	970	963	-7	-0.7
Stanthorpe	428	414	-14	-3.3
Stones Corner	1,840	1,765	-75	-4.1
Toowoomba	2,523	2,488	-35	-1.4
Warwick	499	482	-17	-3.4
Woodridge	2,298	2,237	-61	-2.7
Wynnum	1,062	1,072	10	0.9
Other (a)	12	11	-1	%
<b>Total</b>	<b>25,691</b>	<b>25,127</b>	<b>-564</b>	<b>-2.2</b>

– Note: For footnotes see end of table.

**TABLE 7 - JOB SEEKERS RECEIVING NEWSTART ALLOWANCE AND YOUTH ALLOWANCE (OTHER)  
BY AREA SUPPORT OFFICE AND CUSTOMER SERVICE CENTRE**

<i>Area Support Office and Customer Service Centre</i>	August 2009	September 2009	Variation	
			August - September Number	Per cent
<b><i>SOUTH AUSTRALIA</i></b>				
Berri	909	913	4	0.4
Broken Hill	840	828	-12	-1.4
Ceduna	299	295	-4	-1.3
Coober Pedy	161	164	3	1.9
Elizabeth	2,548	2,471	-77	-3.0
Enfield	1,674	1,613	-61	-3.6
Gawler	1,140	1,121	-19	-1.7
Glenelg	857	816	-41	-4.8
Kadina	620	613	-7	-1.1
Kilkenny	1,624	1,616	-8	-0.5
Marion	2,195	2,163	-32	-1.5
Modbury	1,759	1,699	-60	-3.4
Mt Barker	654	617	-37	-5.7
Mt Gambier	1,285	1,247	-38	-3.0
Murray Bridge	807	775	-32	-4.0
Noarlunga	2,755	2,670	-85	-3.1
Norwood	1,879	1,799	-80	-4.3
Port Adelaide	1,547	1,486	-61	-3.9
Port Augusta	752	723	-29	-3.9
Port Lincoln	571	578	7	1.2
Port Pirie	968	941	-27	-2.8
Salisbury	2,685	2,629	-56	-2.1
Torrens ville	1,455	1,389	-66	-4.5
Victor Harbor	702	675	-27	-3.8
Whyalla	837	840	3	0.4
Other (a)	20	21	1	%
<b>Total</b>	<b>31,543</b>	<b>30,702</b>	<b>-841</b>	<b>-2.7</b>

– Note: For footnotes see end of table.

**TABLE 7 - JOB SEEKERS RECEIVING NEWSTART ALLOWANCE AND YOUTH ALLOWANCE (OTHER)  
BY AREA SUPPORT OFFICE AND CUSTOMER SERVICE CENTRE**

<i>Area Support Office and Customer Service Centre</i>	August 2009	September 2009	Variation	
			August - September Number	Per cent
<b>WEST AUSTRALIA</b>				
Albany	977	993	16	1.6
Area Western Australia	26	33	7	%
Armadale	1,404	1,365	-39	-2.8
Bunbury	1,983	1,951	-32	-1.6
Busselton	755	740	-15	-2.0
Cannington	2,131	2,024	-107	-5.0
Carnarvon	268	275	7	2.6
Cocos Islands	30	33	3	%
Collie	26	13	-13	%
Community Team	60	51	-9	%
Esperance	310	282	-28	-9.0
Fremantle	1,659	1,624	-35	-2.1
Geraldton	1,423	1,353	-70	-4.9
Gosnells	1,357	1,336	-21	-1.5
Innaloo	1,624	1,560	-64	-3.9
Joondalup	2,149	2,032	-117	-5.4
Kalgoorlie	863	811	-52	-6.0
Karratha	294	276	-18	-6.1
Laverton Remote Area Service Centre	54	54	0	%
Mandurah	1,712	1,702	-10	-0.6
Meekatharra	169	174	5	3.0
Midland	2,716	2,656	-60	-2.2
Mirrabooka	2,178	2,140	-38	-1.7
Morley	2,135	2,096	-39	-1.8
Newman Remote Area Service Centre	184	148	-36	-19.6
Northam	619	605	-14	-2.3
Rockingham	2,200	2,151	-49	-2.2
South Hedland	419	390	-29	-6.9
Spearwood	1,382	1,304	-78	-5.6
Victoria Park	2,141	2,111	-30	-1.4
Warwick Grove	1,023	996	-27	-2.6
Other (a)	41	40	-1	%
<b>Total</b>	<b>34,312</b>	<b>33,319</b>	<b>-993</b>	<b>-2.9</b>

– Note: For footnotes see end of table.

**TABLE 7 - JOB SEEKERS RECEIVING NEWSTART ALLOWANCE AND YOUTH ALLOWANCE (OTHER)  
BY AREA SUPPORT OFFICE AND CUSTOMER SERVICE CENTRE**

<i>Area Support Office and Customer Service Centre</i>	August 2009	September 2009	Variation	
			August - September Number	Per cent
<b>TASMANIA</b>				
Bridgewater	710	729	19	2.7
Burnie	1,706	1,690	-16	-0.9
Devonport	1,629	1,651	22	1.4
Glenorchy	1,707	1,669	-38	-2.2
Hobart	1,304	1,277	-27	-2.1
Huonville	428	412	-16	-3.7
Launceston	3,345	3,366	21	0.6
Rosny Park	1,006	983	-23	-2.3
Sorell	578	585	7	1.2
Other (a)	36	35	-1	%
<b>Total</b>	<b>12,449</b>	<b>12,397</b>	<b>-52</b>	<b>-0.4</b>
<b>NORTH AUSTRALIA</b>				
Alice Springs	2,318	2,238	-80	-3.5
Borrooloola	24	23	-1	%
Broome	486	493	7	1.4
Casuarina	882	862	-20	-2.3
Derby	139	133	-6	-4.3
Fitzroy Crossing	69	55	-14	%
Halls Creek	189	178	-11	-5.8
Katherine	966	921	-45	-4.7
Knuckey Street	483	447	-36	-7.5
Kununurra	263	269	6	2.3
Maningrida	196	208	12	6.1
Nhulunbuy	306	276	-30	-9.8
Palmerston	885	848	-37	-4.2
Tangentyere	50	40	-10	%
Tennant Ck Remote	62	59	-3	%
Tennant Creek	174	167	-7	-4.0
Tiwi Islands	171	159	-12	-7.0
Top End Claims	643	607	-36	-5.6
Wadeye	165	164	-1	-0.6
Yuendumu	79	68	-11	%
Other (a)	26	21	-5	%
<b>Total</b>	<b>8,576</b>	<b>8,236</b>	<b>-340</b>	<b>-4.0</b>

– Note: For footnotes see end of table.

**TABLE 7 - JOB SEEKERS RECEIVING NEWSTART ALLOWANCE AND YOUTH ALLOWANCE (OTHER)  
BY AREA SUPPORT OFFICE AND CUSTOMER SERVICE CENTRE**

<i>Area Support Office and Customer Service Centre</i>	August 2009	September 2009	Variation	
			August - September Number	Per cent
<b><i>PACIFIC CENTRAL</i></b>				
APC Community Team	45	39	-6	%
Ballina	1,031	962	-69	-6.7
Beaudesert	646	594	-52	-8.0
Biggera Waters	2,671	2,640	-31	-1.2
Bourke	526	506	-20	-3.8
Brunswick Heads	603	611	8	1.3
Byron Bay	611	597	-14	-2.3
Casino	638	628	-10	-1.6
Coffs Harbour	2,459	2,380	-79	-3.2
Grafton	1,479	1,428	-51	-3.4
Lightning Ridge	145	135	-10	-6.9
Lismore	1,654	1,630	-24	-1.5
Moree	573	529	-44	-7.7
Murwillumbah	635	619	-16	-2.5
Narrabri	306	297	-9	-2.9
Nerang	2,753	2,583	-170	-6.2
Palm Beach	3,122	3,002	-120	-3.8
Southport	3,026	2,975	-51	-1.7
Tweed Heads	1,831	1,793	-38	-2.1
Walgett	234	220	-14	-6.0
Other (a)	21	19	-2	%
<b>Total</b>	<b>25,009</b>	<b>24,187</b>	<b>-822</b>	<b>-3.3</b>
<b><i>OTHER</i></b>				
Centrelink Call Centres	42	4	-38	%
Not Coded To An Area	8	8	0	%
Rounding Adjustment	-43	-63	-20	%
<b>AUSTRALIA</b>	<b>399,572</b>	<b>387,861</b>	<b>-11,711</b>	<b>-2.9</b>

(a) Job seekers who are not allocated to any of the reported offices.

**NOTE: There is a break in the series between June and July 2009. Post July 2009 job seeker data is not wholly comparable with previously published data (see Explanatory Notes).**

Notes:

- Variations for Customer Service Centres with small populations (less than 100) are displayed as % and not reported.
- Data in this table are rounded monthly averages.
- Area Support Office boundaries changed from July 2007. The July 2007 edition of this publication includes a description of the changes.
- The rounding adjustment was included prior to the July 2007 publication, in the Fairfield Customer Service Centre.
- From July 2009, all recipients with job search requirements are classified as job seekers in this report. Prior to 1 July 2009, some people with another activity (such as training) in addition to job search were classified according to that other activity.

**TABLE 8 - JOB SEEKERS RECEIVING NEWSTART ALLOWANCE AND YOUTH ALLOWANCE (OTHER)  
FORTNIGHTLY EARNINGS (%) AND SEX, FORTNIGHT ENDING 18 SEPTEMBER 2009**

<i>Fortnightly Earnings</i>	Short-term job seekers	Long-term job seekers	Total job seekers
<b>MALES</b>			
Did not earn an income	87.4	86.0	86.8
Earned an income	12.6	14.0	13.2
Amount earned			
\$0.01-\$62.00	0.5	0.6	0.6
\$62.01-\$142.00	1.6	2.0	1.8
\$142.01-\$236.00	2.1	2.4	2.2
\$236.01-\$316.00	1.5	1.8	1.6
Over \$316.00	6.9	7.2	7.0
Total	100.0	100.0	100.0
<b><i>Job seekers receiving NSA and YA (other)</i></b>	<b><i>156,471</i></b>	<b><i>94,327</i></b>	<b><i>250,798</i></b>
<b>FEMALES</b>			
Did not earn an income	77.1	75.5	76.3
Earned an income	22.9	24.5	23.7
Amount earned			
\$0.01-\$62.00	0.9	0.9	0.9
\$62.01-\$142.00	2.6	2.8	2.7
\$142.01-\$236.00	3.3	3.3	3.3
\$236.01-\$316.00	2.7	2.7	2.7
Over \$316.00	13.4	14.7	14.1
Total	100.0	100.0	100.0
<b><i>Job seekers receiving NSA and YA (other)</i></b>	<b><i>70,575</i></b>	<b><i>65,611</i></b>	<b><i>136,186</i></b>
<b>PERSONS</b>			
Did not earn an income	84.2	81.7	83.1
Earned an income	15.8	18.3	16.9
Amount earned			
\$0.01-\$62.00	0.6	0.8	0.7
\$62.01-\$142.00	1.9	2.3	2.1
\$142.01-\$236.00	2.5	2.8	2.6
\$236.01-\$316.00	1.9	2.2	2.0
Over \$316.00	8.9	10.3	9.5
Total	100.0	100.0	100.0
<b><i>Job seekers receiving NSA and YA (other)</i></b>	<b><i>227,046</i></b>	<b><i>159,938</i></b>	<b><i>386,984</i></b>

**NOTE: There is a break in the series between June and July 2009. Post July 2009 job seeker data is not wholly comparable with previously published data (see Explanatory Notes).**

- Notes:
- Long-term job seekers have received income support for 12 months or more.
  - From July 2009, all recipients with job search requirements are classified as job seekers in this report. Prior to 1 July 2009, some people with another activity (such as training) in addition to job search were classified according to that other activity.

## EXPLANATORY NOTES

### Introduction

This publication provides monthly statistical information on DEEWR labour market and related payments delivered by Centrelink. These Explanatory Notes provide details of the scope and methodology of the publication, as well as the policy changes which have affected the data since the publication was introduced in December 1995 by the then Department of Social Security.

Prior to December 1995, this publication was titled the *Monthly Job Search and Newstart Allowance Statistics*.

### Scope

The primary focus of the publication is to provide information on unemployed people on Newstart Allowance and Youth Allowance, with a particular focus on the total number of job seekers. The numbers of people on Mature Age Allowance, Partner Allowance and Widow Allowance are also reported.

### Methodology

Data in this publication relate to the average number of people who are both eligible (eg. meet 'unemployed' qualification) and entitled (eg. meet income and assets criteria) to receive a payment calculated over a reference month. Averages are calculated using figures collected for each Friday throughout the reference month.

Table 1 provides information on the total number of unemployed people on Newstart Allowance and Youth Allowance. The Youth Allowance population is split into Youth Allowance (full-time students), Youth Allowance (Australian Apprentices) and Youth Allowance (other) categories. Numbers of people on Mature Age Allowance, Partner Allowance and Widow Allowance are also provided.

Tables 2 and 3 provide a summary of the Newstart Allowance and Youth Allowance (other) populations and show the derivation of the respective job seeker populations (see the reference to job seekers in the Comparability of Data section of these Explanatory Notes). These populations are added together to derive the total number of job seekers. Tables 4 to 8 provide information on the total job seeker population.

The earnings data in Table 8 is derived using a different methodology from that of the other tables in the publication. Table 8 is based on the combined population of job seekers who are eligible for and entitled to receive Newstart Allowance or Youth Allowance (other) at the end of the second last week in the month. The data obtained from this table will not be directly comparable with those calculated using monthly averages in other tables.

## **Payment History**

### *Youth Allowance*

From 1 July 2009 young people under 21 years of age without a Year 12 or equivalent qualification will usually need to:

- participate in education and training full-time; or
- participate full-time (that is, for at least 25 hours a week) in part-time study or training, in combination with other approved activities, until they attain Year 12 or an equivalent Certificate Level II or above qualification.

Job seekers already in receipt of Youth Allowance before 1 July 2009 who do not have Year 12 or an equivalent qualification will transition to the new requirements between 1 January 2010 and 30 June 2010.

From 1 July 1998 Youth Allowance was introduced to provide income support to young people, including students, those looking for work, and those who are sick. Youth Allowees may be undertaking full-time study, full-time job search or a combination of approved activities. Some young people will be exempt from the activity test because of their personal circumstances, eg. illness, homelessness or major personal crisis. The Youth Allowance replaced:

- AUSTUDY for 16-24 year olds (and certain 15 year olds);
- Newstart Allowance for 16-20 year olds (and certain 15 year olds);
- Youth Training Allowance for 16-17 year olds (and certain 15 year olds);
- Sickness Allowance for 16-20 year olds (and certain 15 year olds); and
- More-than-minimum rate Family Payment for secondary students aged 16-18 not getting AUSTUDY.

Youth Allowance recipients are subject to the parental means test. Under previous arrangements, unemployed people aged 18 to 20 were not subject to the parental means test, unlike 18 to 20 year old students.

Special provisions applied for 18 to 20 year olds who were already on Newstart or Sickness Allowance at the date of announcement of Youth Allowance, and who remained on payment when Youth Allowance commenced on 1 July 1998. This group were able to remain on their existing payment and retain their existing benefits.

Youth Allowance had a significant downward effect on Newstart Allowance numbers from July 1998 and total job seeker numbers due to the parental means test.

### *Newstart Allowance*

From 1 July 1998, Newstart Allowance for 16-20 year olds (and certain 15 year olds) was replaced by Youth Allowance. Young people aged 18 to 20 years old who were on Newstart or Sickness Allowance at the date of announcement of Youth Allowance and when Youth Allowance commenced on 1 July 1998, were able to remain on Newstart Allowance.

From 20 September 1996, Job Search Allowance and Newstart Allowance were combined into one payment - Newstart Allowance - which was payable to eligible recipients aged 18 years and over and to some people who were in receipt of Job Search Allowance and aged under 18 at 31 December 1994 (see Job Search Allowance).

Prior to 20 September 1996, Newstart Allowance was payable to eligible persons over 18 years who had been registered as unemployed with the Commonwealth Employment Service (CES) for 12 months or more.

*Job Search Allowance* From 20 September 1996, the payment was combined with Newstart Allowance to form one payment called Newstart Allowance (see *Newstart Allowance*). All Job Search Allowance recipients were transferred to Newstart Allowance.

Prior to 20 September 1996, Job Search Allowance was payable to eligible persons who had been registered as unemployed with the CES for up to 12 months. It was also payable to eligible persons who were in receipt of Job Search Allowance and under 18 years of age at 31 December 1994. Persons aged 15 to 18 years who were not receiving Job Search Allowance prior to 1 January 1995 commenced on Youth Training Allowance.

*Sickness Allowance* From 17 March 1996, persons in receipt of Newstart Allowance or Youth Training Allowance who became temporarily incapacitated no longer transferred to Sickness Allowance after 13 weeks. This change had the effect of increasing total Newstart Allowance/Youth Training Allowance figures but did not affect job seeker figures as those recipients who were incapacitated were excluded from the Newstart and Youth Training job seeker populations.

Under current arrangements, these recipients remain on their existing payments but are exempt from the activity test for the duration of their medical certificates. People who become unemployed because of illness, and those who suffer a potential loss of income due to sickness, are paid Newstart Allowance because they are unemployed.

Sickness Allowance for 16 to 20 year olds (and certain 15 year olds) was replaced by Youth Allowance, which was introduced on 1 July 1998 (see *Youth Allowance*).

*Partner Allowance* From 20 September 2003, Partner Allowance was closed to new claimants. People on Partner Allowance before this date can remain on the allowance while they remain 'current', that is retain eligibility and entitlement for the allowance.

From 1 July 1995 Partner Allowance has only been granted to persons who are dependent partners of pensioners and allowees and who were born before 1 July 1955, have no dependent children and have little or no recent workforce experience. Other dependent partners have to qualify for an income support payment in their own right, such as Newstart Allowance.

Partner Allowance was introduced in September 1994, and was paid to partners of persons receiving Job Search Allowance, Newstart Allowance, Sickness Allowance or Special Benefit if certain eligibility criteria were satisfied.

*Youth Training Allowance*

Youth Training Allowance was replaced by Youth Allowance on 1 July 1998 (see *Youth Allowance*).

From 1 January 1995, eligible persons aged under 18 years who were new entrants to the job search pool were paid Youth Training Allowance. (People who were in receipt of Job Search Allowance and aged under 18 years at 31 December 1994 continued to be paid Job Search Allowance. From 20 September 1996, those young persons still being paid Job Search Allowance were transferred to Newstart Allowance.)

*Widow Allowance*

From 1 July 2005 Widow Allowance new grants may only be made to women born on or before 1 July 1955.

Widow Allowance, introduced on 1 January 1995, is payable to females aged 50 years or over who have become widowed, divorced or separated since turning 40 years (50 prior to 20 March 1997), if they meet a number of other criteria relating to current marital status and recent work experience.

*Mature Age Allowance*

From 20 September 2003, Mature Age Allowance was closed to new claimants. The payment ceased by October 2008 .

From 1 July 1996, the qualification conditions for Mature Age Allowance changed for new claimants. The requirement for 12 months prior receipt of income support was reduced to 9 months for people transferring from Newstart Allowance and removed entirely for people transferring from non-activity tested payments. The requirement to have been registered as unemployed for 9 months was replaced with a requirement to have no recent workforce experience. Reporting of these new claimants commenced from September 1996.

Mature Age Allowance was introduced on 24 March 1994, and was paid to long-term unemployed persons aged 60 years and over (but below Age Pension age) who had been receiving income support for 9 months or more and who were eligible for Newstart Allowance. The introduction of Mature Age Allowance had a downwards effect on Newstart Allowance numbers from April 1994 until September 2003.

**Comparability of Data**

There have been significant changes to the data presented in this publication due to a number of events. The main changes are:

- the method of counting recipients;
- the inclusion of some CDEP recipients in the total recipient numbers;
- the introduction of Youth Allowance in July 1998;
- the way 'job seeker' is defined; and
- the way duration is calculated.

People using this data to construct time series should note the following comments.

*Definition of Recipients* From July 2002, the number of people receiving labour market and related payments reports recipients who are both eligible and entitled to receive a payment. These recipients are otherwise known as ‘current’ recipients.

Revised historical data (using this methodology) from May 1998 to June 2002 is in the July 2002 publication.

Due to improved data sources, data from July 2003 has slight differences from the recipient numbers used in previous editions.

Before July 2002, all recipients who received a payment within a given fortnight were counted. From mid 1998, recipients who received a ‘one-off’ payment were excluded. One-off payments can occur, for instance, when a normal payment is interrupted (eg. payment is cancelled and then restored within that pay period) and a portion of the normal payment is paid.

*Community Development Employment Projects (CDEP)* From 20 March 2000, eligible participants in CDEP started receiving CDEP participant supplement and other add-ons, such as rent assistance, as part of income support payments. This added a number of new recipients to those eligible for payments reported in this publication.

*Introduction of Youth Allowance* The sum of the number of Newstart Allowees and Youth Training Allowees prior to July 1998 is broadly comparable with the sum of Newstart Allowees and Youth Allowees (other) after July 1998, other than the inclusion of Sickness Allowees in the Youth Allowance (other) population.

There is greater comparability between total Newstart Allowance and Youth Training Allowance job seekers prior to July 1998 and total Newstart Allowance and Youth Allowance (other) job seekers after July 1998. This is because the Sickness Allowance group is excluded from the job seeker total.

A pre and post July 1998 comparison will reflect the exclusion of some 18 to 20 year old unemployed people due to the application of the Youth Allowance parental means test (see the *Youth Allowance* section under Payment History).

*Job seekers* From July 2009, all recipients with job search requirements are classified as job seekers in this report.

Prior to 1 July 2009, some people with another activity (such as training) in addition to job search were classified according to that other activity and not as job seekers. Other people who were receiving Intensive Support Customised Assistance under Job Network arrangements were classified as job seekers although they may not always have been undertaking job search.

From July 1998, the definition of job seekers excludes all people

who did not receive a payment due to their own and/or their partner's income, or where applicable, parental income, and all those known not to be required to search for work.

Before July 1998, job seekers excluded allowees who did not receive a payment, allowees who were incapacitated, and allowees who were undertaking training. Some people who were not required to search for work were classified as job seekers, including people undertaking full-time voluntary work, people on jury duty and pregnant women around the time of the birth of their child.

*Duration*

Since May 1998, duration has been defined according to the time a recipient spends on income support - short-term recipients are those who have been on income support for up to 12 months and long-term recipients are those who have been on income support for 12 months or more.

Prior to 1998, duration was defined according to the time a recipient was registered as unemployed - short-term recipients were people who were registered as unemployed for up to 12 months and long-term recipients were people who were registered for 12 months or more.

*Closure of Mature Age and Partner Allowances*

From 20 September 2003, Mature Age Allowance and Partner Allowance were closed to new claimants. and payments of Mature Age Allowance ceased in October 2008. People on these allowances before 20 September 2003 can remain on that allowance while they remain 'current', that is retain eligibility and entitlement for the allowance. The majority of people who would previously have claimed these payments will now claim Newstart Allowance.

**Symbols**

n.a. not available  
.. not applicable

## GLOSSARY

<b>Activity test status</b>	The activity that a Newstart Allowance or Youth Allowance (other) recipient has agreed to undertake in order to meet the activity test. To satisfy the activity test recipients must be actively seeking and willing to take up work or undertaking activities to improve their employment prospects.
<b>Age</b>	Age in years at time of data collection.
<b>Area Support Office</b>	A Centrelink office that supports a set of Customer Service Centres for a specified area. These are generally not confined to State boundaries.
<b>Community Development Employment Projects (CDEP)</b>	The CDEP program is administered by the Department of Families, Housing, Community Services and Indigenous Affairs. Reforms to CDEP were introduced from 1 July 2009. Operating mainly in remote areas, the CDEP program aims to help unemployed Indigenous Australians to find and keep jobs. Under the CDEP program, there are two main ways ('streams') that CDEP providers assist Indigenous Australians: Work Readiness Services help individuals to develop their skills, improve their chances of getting a job, and move to work outside of the CDEP program; and Community Development focuses on supporting and developing Indigenous communities and organisations.
<b>CDEP Participant Supplement (CPS)</b>	The CDEP Participant Supplement (CPS) is payable to eligible CDEP participants. It can be paid fortnightly or as a 12 weekly payment.
<b>Customer Service Centre</b>	A Customer Service Centre set within a particular region that provides FaHCSIA, DEEWR and other payments and related information and services to recipients. Customer Service Centres are managed by Area Support Offices.
<b>Did not receive a payment</b>	Persons who did not receive a payment due to their own income and/or that of their partner, or parents, where applicable. This group is often referred to as 'zero paid'.
<b>Fortnightly earnings</b>	Amount of income earned, derived, or received by a person for the person's own use or benefit in the previous fortnight.
<b>Incapacitated</b>	A person on Newstart Allowance or Youth Allowance (other) who has an activity test status indicating they are temporarily ill or incapacitated. Refer to the entry for Sickness Allowance in the Explanatory Notes.
<b>Job seeker</b>	A person on Newstart Allowance or Youth Allowance (other) who would usually be engaged in job search. See Explanatory Notes for definition and history.
<b>Job Search Allowance (JSA)</b>	Up to 20 September 1996, Job Search Allowance was payable to eligible persons who had been registered as unemployed with the Commonwealth Employment Service for up to 12 months. From 20 September 1996, the payment was combined with Newstart Allowance. See Explanatory Notes for history.

<b>Long-term recipients</b>	Persons who have been receiving income support for 12 months or more. Duration of long-term recipients can be reset to zero if they exited from payments for more than 13 weeks.
<b>Mature Age Allowance (MAA)</b>	<p>From 20 September 2003, Mature Age Allowance was closed to new claimants. The payment ceased by October 2008.</p> <p>Mature Age Allowance was a payment for unemployed people aged 60 years and over (but below Age Pension age) with little or no recent workforce experience. These people were not required to look for work to be eligible for the payment. See Explanatory Notes for history.</p>
<b>Newstart Allowance (NSA)</b>	Newstart Allowance is payable to eligible unemployed persons aged 21 years and over (but below Age Pension age) who satisfy the activity test. See Explanatory Notes for history.
<b>Partner Allowance (PA)</b>	<p>From 20 September 2003, Partner Allowance was closed to new claimants. People on Partner Allowance before this date can remain on the allowance while they remain 'current', that is retain eligibility and entitlement for the allowance.</p> <p>Partner Allowance was for dependent partners of pensioners and allowees. Partners had to be born before 1 July 1955, have no dependent children and have little or no recent workforce experience. Partner Allowance had no job search requirement. See Explanatory Notes for history.</p>
<b>Short-term recipients</b>	Persons on Newstart Allowance or Youth Allowance who have been receiving income support for less than 12 months. Duration of short-term recipients can be reset to zero if they exited from payments for more than 6 weeks.
<b>Widow Allowance (WA)</b>	<p>From 1 July 2005 Widow Allowance new grants may only be made to women born on or before 1 July 1955.</p> <p>Widow Allowance, a non-activity tested payment, is payable to females aged 50 years or over who have become widowed, divorced or separated since turning 40 years if they have little or no recent work experience and meet a number of other criteria relating to current marital status. See Explanatory Notes for history.</p>
<b>Youth Training Allowance (YTA)</b>	From 1 January 1995 eligible persons aged under 18 years who were registered as unemployed with the CES were paid Youth Training Allowance. From 1 July 1998, Youth Training Allowance was replaced by Youth Allowance. See Explanatory Notes for history.
<b>Youth Allowance (YA)</b>	<p>Youth Allowance is payable to eligible full-time students aged 16 to 25 years, and to eligible unemployed persons aged 16 to 20 years who satisfy the activity test. Note, there are certain exceptions for some 15 and 25 year olds. See Explanatory Notes for history.</p> <p>Youth Allowees may be undertaking full-time study, full-time job search or a combination of approved activities. Some young</p>

people will be exempt from the activity test because of their personal circumstances, eg. illness, homelessness or major personal crisis. See the Explanatory Notes for more information.

From 1 July 2009 young people under 21 years of age without a Year 12 or equivalent qualification will usually need to:

- participate in education and training full-time; or
- participate full-time (that is, for at least 25 hours a week) in part-time study or training, in combination with other approved activities, until they attain Year 12 or an equivalent Certificate Level II or above qualification.

Job seekers already in receipt of Youth Allowance before 1 July 2009 who do not have Year 12 or an equivalent qualification will transition to the new requirements between 1 January 2010 and 30 June 2010.

**Youth Allowance (other)**

Youth Allowance recipients who are not full-time students or full-time Australian Apprentices.

**Zero paid**

See 'Did not receive a payment'.

## APPENDIX

### COMPARISONS BETWEEN DEEWR UNEMPLOYMENT LABOUR MARKET PAYMENT NUMBERS AND ABS LABOUR FORCE UNEMPLOYMENT STATISTICS

<b>Official statistics</b>	Official unemployment statistics are released by the Australian Bureau of Statistics (ABS). The ABS uses definitions recommended by the International Labour Office which have been accepted internationally as the most appropriate for the compilation of official statistics of unemployment.
<b>ABS definition</b>	The ABS unemployment statistics measure the number of persons who, for a particular reference period, did not undertake any paid work, were actively looking for work and were available to start work.
<b>DEEWR Unemployment Labour Market Payment Statistics</b>	The labour market payment statistics give the number of persons who are both eligible and entitled to receive Newstart Allowance or Youth Allowance (other). The criteria for receipt of these payments do not match those the ABS uses to determine whether a person is classed as unemployed or employed for statistical purposes.
<b>Differences</b>	Care should be taken when comparing the ABS labour force and DEEWR labour market payment data. There are a number of reasons why the two series cannot be directly compared.
<i>Duration</i>	<p>Both DEEWR and the ABS classify long-term duration as over 12 months, but use substantially different definitions of duration:</p> <p>DEEWR measures duration of <b>income support</b>. This includes not just time on unemployment benefits but time on any income support payment.</p> <p>The ABS measures length of time <b>unemployed</b> using their unemployment definition.</p> <p>DEEWR unemployed recipients can have breaks without payment and still be classified as long-term income support recipients:</p> <ul style="list-style-type: none"><li>• Recipients who do not receive a payment due to their earnings can have up to 12 weeks without a payment before they are automatically cancelled. This reduces disincentives to accept short-term work.</li><li>• Long-term recipients can have 13 weeks off payment after payment is cancelled and keep their long-term status if they return to income support. This means they keep access to assistance such as the higher payment rate for recipients over 60.</li></ul>

For the ABS statistics, any hours of work for a period as short as two weeks count as a break from unemployment and so are enough to reset a person's unemployment duration.

The difference between these two concepts, together with the fact that DEEWR recipients are able to have ongoing part-time work (see 'employment' below) mean that many unemployed recipients remain classified by DEEWR as long-term recipients when they would be classified as short-term unemployed under the ABS definition.

*Seasonal adjustment* The ABS produces a seasonally adjusted series. The DEEWR labour market payment numbers data are not seasonally adjusted.

*Classification* The ABS classifies a person as unemployed if he or she is aged 15 years and over, was not employed during the week before the interview, has actively looked for full-time or part-time work and is available to start work. From February 2004, people who had not actively looked for work because they were waiting to start a job within four weeks are also classified as unemployed.

The Newstart Allowance and Youth Allowance (other) series generally count people who are eligible for and entitled to receive a payment between the ages of 15 years and 64 years in the case of men and 15 to 63 years in the case of women.

*Employment* Newstart Allowance and Youth Allowance (other) recipients may be employed part-time, but within an income test limit; the ABS classifies a person as "employed" if, among other things, he or she has worked for one hour or more during the survey period.

*Timing* The timing of collections of the series are different:

- DEEWR reports monthly average numbers of people both eligible for and entitled to receive Newstart Allowance and Youth Allowance (other). These monthly averages are calculated using figures collected for each Friday throughout the reference month.
- ABS numbers are based on a sample survey which interviews occupants of selected dwellings covering around 0.27% of the total Australian population. These persons are generally interviewed during the two weeks beginning the Monday between the 6th and 12th of each month and the information obtained relates to the week before the interview takes place.

*Treatment of partners* The ABS series includes unemployed persons whose spouse is working, irrespective of income, whereas Newstart Allowance and Youth Allowance (other) recipients are subject to an income and assets test for themselves and their spouse.

*Pensioners* The ABS series includes persons being paid a pension but looking for work (eg. sole parents in receipt of Parenting Payments looking for work).

<i>Non job seekers</i>	The overall Newstart Allowance and Youth Allowance (other) series includes persons who are not required to undertake jobsearch. These persons are separately identified in Tables 2 and 3, and have then been excluded in subsequent tables. These people may be undertaking training, the development of self-employment opportunities, full-time voluntary work or a combination of voluntary and part-time work which excludes them from jobsearch obligations. They may also be incapacitated or have another temporary exemption from jobsearch.
<i>Waiting periods</i>	The ABS series includes persons who are serving a waiting period before being granted Newstart Allowance or Youth Allowance (other), or whose allowance was deferred.
<i>Survey</i>	The ABS figures are derived from a Labour Force Survey which is a sample survey, whereas the DEEWR statistics are a complete count of those both eligible for and entitled to receive Newstart Allowance and Youth Allowance (other).

## FOR MORE INFORMATION

### **Labour market information**

Other statistics on recipients of labour market related payments are available on request.

In addition to Newstart and Youth Allowances, statistics are also available on Partner Allowance, Mature Age Allowance and Widow Allowance.

For publication distribution enquiries email:  
REGULAR.REPORTING@centrelink.gov.au

Written correspondence concerning this publication or statistics on labour market related payments should be addressed to:

Director  
Income Support Information Section  
Working Age Payment Programs Branch  
Income Support and Stakeholder Group  
Department of Education, Employment and Workplace Relations  
PO Box 9879  
Canberra Mail Centre ACT 2601

or forwarded via facsimile to (02) 6204 2912.

### **Other recipient information**

The Department of Families, Housing, Community Services and Indigenous Affairs has published:  
Income Support Customers: a Statistical Overview  
1996, 1997, 1998, 1999, 2000, 2001, 2002, 2003 and 2004.

The Department of Families, Housing, Community Services and Indigenous Affairs Statistics also collates statistics about the various pensions, benefits and family payments which that Department administers.