

# Labour Market Assistance Outcomes

December Quarter 2000

*This report contains information about placements, commencements and post labour market assistance outcomes achieved for Job Network services and other programmes managed by the Department of Employment, Workplace Relations and Small Business (DEWRSB).*

## **Main features**

### **Outcomes**

The positive outcomes (employment and/or education/training) rate achieved in the year to end December 2000, three months after leaving assistance were:

- 43% for Intensive Assistance;
- 51% for Job Search Training;
- 85% for New Enterprise Incentive Scheme (NEIS);
- 36% for Work for the Dole;
- 74% for Indigenous Employment Programme Structured Training and Employment Projects (STEP);
- 67% for Indigenous Employment Programme Wage Assistance; and
- 49% for Return to Work.

For job seekers placed in Job Matching jobs between March and September 2000, the positive outcomes rate three months after placement was 71%.

### **Job Vacancies**

In the year to end December 2000, more than 755,000 vacancies were notified on the Australian Job Search database.

### **Job Placements**

In the year to end December 2000, over 297,000 job seekers were placed into Job Matching vacancies. These include placements for those receiving other services, such as Intensive Assistance.

### **Commencements**

In the year to end December 2000, commencements by job seekers in the various types of labour market assistance included:

- 320,000 in Intensive Assistance;
- 62,800 in Job Search Training;
- 6,400 in NEIS;
- 5,300 in Indigenous Employment Programme including STEP projects and Wage Assistance;
- 49,500 in Work for the Dole;
- 2,400 in the Return to Work Programme; and
- 13,400 in the Community Support Programme.

### **Income Support**

In the year to end December 2000, the number of job seekers in receipt of Newstart or Youth Allowance (Other) decreased by over 51,000. Over 46,000 - or 90% - of these job seekers were long term recipients (ie on allowances for 12 months or more).

---

## **In this issue**

Section 1: Labour Market Assistance Outcomes	Page 3
Section 2: Access to and Participation in Labour Market Assistance	Page 10
Section 3: Participation and Outcomes by Region	Page 15
Section 4: Impact on Income Support Recipients	Page 19
Technical Notes	Page 20

## **Time periods used in this report**

The Department's Post Programme Monitoring (PPM) Survey measures outcomes achieved by job seekers 3 months after they exit labour market assistance. This report contains outcomes data for job seekers who exited assistance in the 12 months to 30 September 2000 and their post assistance outcomes achieved by 31 December 2000. Job Matching post assistance outcomes relate to job seekers who were placed in a job between 1 March and 30 September 2000 and outcomes achieved by 31 December 2000. Intensive Assistance post assistance outcomes should not be confused with paid interim or paid final outcomes. Post assistance outcomes are *all* employment and education outcomes while paid outcomes relate to a subset of employment and education outcomes where Job Network members receive payment for outcomes. Commencement and placement data, derived from DEWRSB and Centrelink administrative systems, relate to job seekers who were placed in a job or commenced assistance between 1 January 1999 and 31 December 2000 and 1 January 1998 and 31 December 1999. Special Articles relates to different time periods as specified.

## **More information.....**

For further information, please contact Robert Lipp (02 6121 6046) or Michael Cameron (02 6121 7240) or e-mail Beth.Lawrence@DEWRSB.gov.au.

ISSN:

© Commonwealth of Australia

This work is copyright. Apart from any use as permitted under the *Copyright Act 1968*, no part may be reproduced by any process without prior written permission from the Commonwealth available from Aus Info. Requests and inquiries concerning reproduction and rights should be addressed to the Manager, Legislative Services, AusInfo, GPO Box 1920, Canberra ACT 2601.

Department of Employment, Workplace Relations and Small Business  
<http://www.dewrsb.gov.au/>

## Section 1: Labour Market Assistance Outcomes

### Post assistance labour market outcomes

Table 1.1 shows the labour market outcomes and further assistance levels of all job seekers three months after leaving the various types of employment assistance. Job seekers are categorised as employed, unemployed, not in the labour force or in further assistance. Hence, the sum of the row percentages is 100%.

Care should be taken when comparing outcomes for current services with labour market programmes operating before the introduction of the Job Network, where outcome rates were affected by *excluding* those who proceeded to further labour market programme assistance. The Technical Notes at the end of this report discuss this issue further.

Outcomes for the Return to Work (RTW) Programme are now available. RTW is a voluntary, non-means tested programme that helps job seekers, who have been absent from the labour force for two years or more due to unpaid caring responsibilities, increase their skills and confidence so they can re-enter the work force. For the most part participants are women with school age children who are seeking employment of 15 hours or more per week.

Three months after leaving assistance, 34% of RTW participants achieved an employment outcome. One in five RTW participants were no longer looking for work (ie not in the labour force). A significant number of participants stated that a change in family circumstances meant they could not consider paid employment at the time of the follow-up.

**Table 1.1: Post assistance labour market outcomes year to end December 2000**

Labour market assistance	Employed (%)	Unemployed (%)	Not in the Labour Force (%)	Further Assistance <sup>1</sup> (%)	Exits (number)
Intensive Assistance <sup>2</sup>	35.9	43.6	16.0	4.4	308,130
Funding level A <sup>3</sup>	41.1	39.9	14.6	4.4	212,484
Funding level B <sup>3</sup>	25.3	51.5	19.0	4.3	95,646
Job Search Training <sup>2</sup>	42.9	46.2	5.2	5.6	56,966
Job Matching <sup>4</sup>	67.3	28.7	3.9	na	175,562
Job Network Eligible (JNE) <sup>5</sup>	63.2	33.5	3.3	na	126,943
Job Matching Only (JMO) <sup>6</sup>	76.2	18.7	5.0	na	48,619
NEIS <sup>2</sup>	83.3	10.5	6.2	na	6,933
Work for the Dole <sup>2</sup>	26.9	53.8	6.3	13.0	33,199
IEP - STEP <sup>2</sup>	68.0	21.8	7.5	2.8	2,752
IEP - Wage Assistance <sup>2</sup>	64.2	29.2	4.3	2.2	1,381
Return to Work <sup>7</sup>	34.0	46.0	20.0	na	1,138

- Further assistance includes commencements in Intensive Assistance, Job Search Training, NEIS, Work for the Dole, Indigenous Employment Programme (IEP) and DETYA programmes New Apprenticeships, Literacy and Numeracy and Advanced English for Migrants. Further assistance is not measured for Job Matching and job seekers who do not achieve an employment outcome are treated as either unemployed or not in the labour force.
  - Post assistance outcomes are measured three months after the job seeker ceases assistance and relate to job seekers who ceased Intensive Assistance, Job Search Training, NEIS, Work for the Dole, IEP Structured Training and Employment Projects (STEP) and IEP Wage Assistance between 1 October 1999 and 30 September 2000 and outcomes achieved by 31 December 2000. Employment outcomes include some indigenous job seekers who return to a Community Development Employment Projects (CDEP) after leaving labour market assistance.
  - The funding level refers to the level of disadvantage as defined by the Job Seeker Classification Instrument (JSCI) with B being the most disadvantaged.
  - Post assistance outcomes for Job Matching relate to job seekers who were placed in a job between 1 March and 30 September 2000 and outcomes achieved by 31 December 2000.
  - Includes Job Network Eligible (JNE) job seekers who may be eligible for all Job Network services.
  - Includes Job Matching Only (JMO) job seekers who are only eligible for Job Matching services.
  - Post assistance outcomes relate to job seekers who exited the Return to Work Programme between 1 February and 30 September 2000 and outcomes achieved by 31 December 2000.
- na - not applicable.

Source: The Post Programme Monitoring Survey conducted 3 months after job seekers cease assistance.

## Post assistance employment and positive outcomes

Table 1.2 shows the shares of full-time and part-time employment, education/training and positive outcomes for those three months after they left the different types of labour market assistance.

Education and training outcomes include job seekers who are studying at a secondary school or college, TAFE, business college or university three months after ceasing labour market assistance. Relatively high

education and training outcomes for RTW may reflect participants continuing in training organised by their RTW Managing Agent.

Indigenous employment outcomes have been steadily increasing since outcomes were reported in the first issue of this report (June Quarter 2000). These outcomes include some job seekers who have returned to Community Development Employment Projects (CDEP).

**Table 1.2: Post assistance employment and positive outcomes year to end December 2000**

	Full-time Employed (%)	Part-time Employed (%)	Total Employed (%)	Education & Training (%)	Positive Outcomes <sup>1</sup> (%)	Exits (number)
Labour market assistance						
Intensive Assistance <sup>2</sup>	16.0	19.9	35.9	8.3	42.5	308,130
Funding level A <sup>3</sup>	18.7	22.4	41.1	8.8	47.8	212,484
Funding level B <sup>3</sup>	10.5	14.8	25.3	7.2	31.4	95,646
Job Search Training <sup>2</sup>	21.9	21.0	42.9	12.3	51.0	56,966
Job Matching <sup>4</sup>	40.0	27.3	67.3	9.2	70.6	175,562
Job Network Eligible (JNE) <sup>5</sup>	37.7	25.5	63.2	9.7	67.0	126,943
Job Matching Only (JMO) <sup>6</sup>	45.0	31.2	76.2	8.3	78.4	48,619
NEIS <sup>2</sup>	53.3	30.0	83.3	7.8	85.3	6,933
Work for the Dole <sup>2</sup>	14.5	12.4	26.9	11.7	36.0	33,199
IEP - STEP <sup>2</sup>	41.7	26.3	68.0	24.2	74.0	2,752
IEP - Wage Assistance <sup>2</sup>	49.3	14.9	64.2	15.7	67.1	1,381
Return to Work <sup>7</sup>	5.0	29.0	34.0	19.1	49.1	1,138

1. Positive outcomes include employed and education/training outcomes. Positive outcomes are less than the sum of employed and education/training outcomes because some job seekers achieve both an employment and an education outcome.

2. Post assistance outcomes are measured 3 months after participants leave assistance and relate to job seekers who ceased Intensive Assistance, Job Search Training, NEIS, Work for the Dole or Indigenous Employment Programme (IEP) Structured Training and Employment Projects (STEP) and IEP Wage Assistance between 1 October 1999 and 30 September 2000 and outcomes achieved by 31 December 2000.

Employment outcomes include some indigenous job seekers who return to a Community Development Employment Projects (CDEP) after leaving labour market assistance.

3. The funding level refers to the level of disadvantage as defined by the Job Seeker Classification Instrument (JSCI) with B being the most disadvantaged.

4. Post assistance outcomes for Job Matching relate to job seekers who were placed in a job between 1 March and 30 September 2000 and outcomes achieved by 31 December 2000.

5. Includes Job Network Eligible (JNE) job seekers who may be eligible for all Job Network services.

6. Includes Job Matching Only (JMO) job seekers who are only eligible for Job Matching services.

7. Post assistance outcomes relate to job seekers who exited the Return to Work Programme between 1 February and 30 September 2000 and outcomes achieved by 31 December 2000.

Source: The Post Programme Monitoring Survey conducted 3 months after job seekers cease assistance.

## Intensive Assistance

Table 1.3 shows post assistance outcomes for Intensive Assistance participants who exited between 1 October 1999 and 30 September 2000 and the outcomes they achieved three months later, up to 31 December 2000.

As a result of the second contract period of the employment services market, 79,000 Intensive Assistance participants were transferred to new Job Network members to complete their assistance. Of

these, around 53,000 commenced assistance. For the purposes of post programme monitoring, transferred participants will be surveyed once their period of assistance with their new provider has ceased.

Improvements in reporting systems on equity groups have resulted in the identification of increased numbers of sole parents participating in Job Network services and labour market programmes compared with previous reports.

**Table 1.3: Intensive Assistance: Post assistance outcomes year to end December 2000<sup>1</sup>**

Job seeker characteristics	Employment (%)	Education & Training (%)	Positive Outcomes <sup>2</sup> (%)	Exits (number)
<b>Funding level<sup>3</sup></b>				
A	41.1	8.8	47.8	212,484
B	25.3	7.2	31.4	95,646
<b>Age group (years)</b>				
15 to 20	34.6	16.5	47.9	35,187
21 to 24	36.6	13.0	46.5	34,508
25 to 34	38.6	10.0	46.3	79,850
35 to 44	37.5	8.6	44.4	68,097
45 or more	34.0	5.3	38.3	90,488
<b>Duration on income support (months)</b>				
0 to less than 6	42.2	9.3	49.4	84,595
6 to less than 12	38.1	9.3	45.6	36,703
12 to less than 24	36.9	9.7	44.5	57,187
24 to less than 36	34.7	7.6	40.8	46,546
36 or more	28.9	6.4	34.0	83,099
<b>Gender</b>				
Male	34.7	6.5	40.0	214,317
Female	38.6	11.8	47.6	93,813
<b>Equity groups<sup>4</sup></b>				
Disability	28.1	6.0	33.1	52,462
Indigenous <sup>5</sup>	27.1	9.9	35.1	17,428
Non-English-speaking background	34.4	11.9	44.4	65,469
Sole parents	35.0	13.6	45.2	13,290
<b>Total</b>	<b>35.9</b>	<b>8.3</b>	<b>42.5</b>	<b>308,130</b>

1. Job seekers who exited Intensive Assistance between 1 October 1999 and 30 September 2000 and achieved outcomes by 31 December 2000.
2. Positive outcomes include employed and education/training outcomes. Positive outcomes are less than the sum of employed and education/training outcomes because some job seekers achieve both an employment and an education outcome.
3. The funding level refers to the level of disadvantage as defined by the Job Seeker Classification Instrument (JSCI). Under the first contract period there were three funding levels – 3.1, 3.2 and 3.3, with 3.3 being the most disadvantaged. Under the second contract period there are two funding levels, A and B, with funding level B being the most disadvantaged. Funding level 3.1 is included in funding level A while funding levels 3.2 and 3.3 are included under funding level B.
4. Equity groups are not mutually exclusive.
5. Employment outcomes include some indigenous job seekers who return to a Community Development Employment Projects (CDEP) after leaving labour market assistance.

Source: The Post Programme Monitoring Survey conducted 3 months after job seekers cease assistance.

## Job Search Training

Table 1.4 shows post assistance outcomes for Job Search Training participants who exited assistance between 1 October 1999 and 30 September 2000 and the outcomes they achieved three months later, up to 31 December 2000.

Improvements in reporting systems on equity groups have resulted in the identification of increased numbers of sole parents participating in Job Network services and labour market programmes compared with previous reports.

**Table 1.4: Job Search Training: Post assistance outcomes year to end December 2000<sup>1</sup>**

Job seeker characteristics	Employment (%)	Education & Training (%)	Positive Outcomes <sup>2</sup> (%)	Exits (number)
<b>Age group (years)</b>				
15 to 20	46.1	17.4	57.9	9,469
21 to 24	49.6	17.2	60.4	9,542
25 to 34	45.4	11.5	52.4	17,744
35 to 44	40.7	10.7	47.7	12,440
45 or more	36.9	8.8	42.9	7,771
<b>Duration on income support (months)</b>				
0 to less than 6	46.2	12.4	54.1	29,060
6 to less than 12	40.3	11.5	47.9	15,527
12 to less than 24	39.7	13.5	48.8	9,296
24 or more	37.2	10.0	43.8	3,083
<b>Gender</b>				
Male	39.8	10.5	46.9	36,839
Female	48.4	15.2	57.8	20,127
<b>Equity groups<sup>3</sup></b>				
Disability	37.4	9.9	44.0	3,376
Indigenous <sup>4</sup>	29.2	12.1	39.8	421
Non-English-speaking background	38.4	16.4	49.8	6,935
Sole Parents	38.5	16.1	50.1	1,565
<b>Total</b>	<b>42.9</b>	<b>12.3</b>	<b>51.0</b>	<b>56,966</b>

1. Job seekers who ceased Job Search Training between 1 October 1999 and 30 September 2000 and outcomes achieved by 31 December 2000.
2. Positive outcomes include employed and education/training outcomes. Positive outcomes include employed and education/training outcomes. Positive outcomes are less than the sum of employed and education/training outcomes because some job seekers achieve both an employment and an education outcome.
3. Equity groups are not mutually exclusive.
4. Employment outcomes include some indigenous job seekers who return to a Community Development Employment Projects (CDEP) after leaving labour market assistance.

Source: The Post Programme Monitoring Survey conducted 3 months after job seekers cease assistance.

## Job Matching

Table 1.5 shows the employment outcomes achieved by job seekers who were placed in an eligible job between March and September 2000 and outcomes achieved three months later, up to 31 December 2000. This represents the first 7 months of Job Network's second contract period.

Unlike other labour market assistance where a census is conducted, Job Matching outcomes data are derived from a sample survey of 10% of job seekers.

Job seeker characteristics of age, duration on income support, gender and equity groups are presented for Job Network Eligible job seekers.

Improvements in reporting systems on equity groups have resulted in the identification of increased numbers of sole parents participating in Job Network services and labour market programmes compared with previous reports.

**Table 1.5: Job Matching: Post assistance outcomes March to December 2000<sup>1</sup>**

Job seeker characteristics	Employment (%)	Education & Training (%)	Positive Outcomes <sup>2</sup> (%)	Placements <sup>3</sup> (number)
<b>Age group (years)<sup>4</sup></b>				
15 to 20	69.3	15.3	74.7	33,321
21 to 24	71.5	12.3	74.9	21,839
25 to 34	66.6	7.6	69.0	34,253
35 to 44	65.8	6.5	68.3	21,123
45 or more	65.9	6.9	68.9	16,407
<b>Duration on income support (months)<sup>4</sup></b>				
0 to less than 6	72.8	9.9	75.8	64,124
6 to less than 12	63.9	9.4	67.8	17,862
12 to less than 24	61.6	7.8	65.0	15,928
24 or more	54.6	7.7	58.1	29,029
<b>Gender<sup>4</sup></b>				
Male	62.7	6.6	65.2	79,701
Female	73.1	12.4	77.2	47,242
<b>Equity groups<sup>4</sup></b>				
Disability	51.0	7.1	54.9	11,963
Indigenous <sup>5</sup>	47.8	5.4	50.0	3,545
Non-English-speaking background	65.4	10.5	70.7	11,586
Sole Parents	59.8	9.4	63.0	3,620
<b>Job Network Eligible (JNE)<sup>6</sup></b>	<b>63.2</b>	<b>9.7</b>	<b>67.0</b>	<b>126,943</b>
<b>Job Matching Only (JMO)<sup>7</sup></b>	<b>76.2</b>	<b>8.3</b>	<b>78.4</b>	<b>48,619</b>
<b>Total</b>	<b>67.3</b>	<b>9.2</b>	<b>70.6</b>	<b>175,562</b>

1. Job Matching outcomes are for job seekers placed in an eligible Job Matching job between 1 March and 30 September 2000 and outcomes achieved by 31 December 2000. Job Matching outcomes do not include outcomes for apprenticeships and traineeships.
2. Positive outcomes include employed and education/training outcomes. Positive outcomes are less than the sum of employed and education/training outcomes because some job seekers achieve both an employment and an education outcome.
3. Job Matching outcomes are derived from a sample survey of 10% of job seekers placed in Job Matching vacancies.
4. Outcomes refer to Job Network Eligible (JNE) job seekers only as client group details are not recorded for JMOs. Equity groups are not mutually exclusive.
5. Employment outcomes include some indigenous job seekers who return to a Community Development Employment Projects (CDEP) after leaving labour market assistance.
6. Includes Job Network Eligible (JNE) job seekers who may be eligible for other Job Network services.
7. Includes Job Matching Only (JMO) job seekers who are only eligible for Job Matching services.

Source: The Post Programme Monitoring Survey conducted 3 months after job seekers cease assistance.

## New Enterprise Incentive Scheme

Table 1.6 shows the post assistance outcomes achieved by those who left the New Enterprise Incentive Scheme (NEIS) in the 12 months up to end September 2000 and outcomes achieved three months later, up to 31 December 2000.

Traditionally NEIS has always experienced higher outcomes compared to other types of labour market assistance. This is due in part to the selection of viable businesses prior to the commencement in assistance by the NEIS provider.

**Table 1.6: New Enterprise Incentive Scheme: Post assistance outcomes year to end December 2000<sup>1</sup>**

Job seeker characteristics	Employment			Education & Training (%)	Positive Outcomes <sup>3</sup> (%)	Exits (number)
	Self Employed <sup>2</sup> (%)	Employed (%)	Total Employed (%)			
<b>Age group (years)</b>						
20 or less	48.5	21.2	69.7	16.1	77.8	105
21 to 24	65.6	19.8	85.4	10.8	88.3	577
25 to 34	72.0	13.8	85.8	8.4	88.0	2,319
35 to 44	73.0	10.9	83.8	6.9	85.9	2,268
45 or more	68.5	11.3	79.8	7.2	81.6	1,664
<b>Gender</b>						
Males	73.1	12.6	85.7	7.0	87.4	3,903
Females	67.8	12.4	80.2	8.8	82.9	3,030
<b>Equity groups<sup>4</sup></b>						
Disability	67.2	7.2	74.4	8.1	77.9	718
Indigenous <sup>5</sup>	na	na	na	na	na	na
Non-English-speaking background	67.7	12.7	80.5	8.5	88.3	983
Sole Parents <sup>5</sup>	na	na	na	na	na	na
<b>Total</b>	<b>70.7</b>	<b>12.5</b>	<b>83.3</b>	<b>7.8</b>	<b>85.4</b>	<b>6,933</b>

1. Job seekers who left NEIS placements between 1 October 1999 and 30 September 2000 and outcomes achieved by 31 December 2000.
2. Includes a small proportion of participants who are self employed but in a business not set up under NEIS.
3. Positive outcomes include employed and education/training outcomes. Positive outcomes are less than the sum of employed and education/training outcomes because some job seekers achieve both an employment and an education outcome.
4. Equity groups are not mutually exclusive.
5. Not available as the estimate is based on a small number of known outcomes.

Source: The Post Programme Monitoring Survey conducted 3 months after job seekers cease assistance.

## Work for the Dole

The Work for the Dole Programme aims to develop the work habits of participants through involving them in quality projects that are of value to the community. Employment outcomes are not part of the programme's immediate objectives but are included here as they demonstrate the success of work experience and increased job search activity.

Table 1.7 shows outcomes for job seekers who left their Work for the Dole projects between 1 October

1999 and 30 September 2000 and outcomes achieved up to 31 December 2000.

Outcomes for Work for the Dole participants referred to Community Work Coordinators are not included here. These will be included in the March Quarter 2001 report when sufficient outcomes for these participants are available.

Job seekers aged 35 years who participate in Work for the Dole are volunteers.

**Table 1.7: Work for the Dole: Post Assistance Outcomes year to end December 2000<sup>1</sup>**

Job seeker characteristics	Employment (%)	Education & Training (%)	Positive Outcomes <sup>2</sup> (%)	Exits (number)
<b>Age group (years)</b>				
20 or less	26.9	14.3	38.2	7,867
21 to 24	29.6	13.3	39.4	11,551
25 to 34	24.2	8.9	31.1	12,360
35 to 44	29.9	9.8	37.3	933
45 or more	25.4	9.7	33.9	488
<b>Duration on income support (months)</b>				
0 to less than 6	39.9	18.6	53.0	1,851
6 to less than 12	36.0	15.1	47.6	5,434
12 to less than 24	29.8	12.9	39.3	8,698
24 or more	20.6	9.1	27.8	17,216
<b>Gender</b>				
Males	25.6	10.0	33.5	23,050
Females	29.6	15.1	40.8	10,149
<b>Equity groups<sup>3</sup></b>				
Disability	18.9	9.4	26.7	3,817
Indigenous <sup>4</sup>	15.7	7.2	21.5	1,420
Non-English-speaking background	25.1	19.8	42.2	2,310
Sole Parents	26.4	1.9	28.4	385
<b>Total</b>	<b>26.9</b>	<b>11.7</b>	<b>36.0</b>	<b>33,199</b>

1. Job seekers who left a Work for the Dole project between 1 October 1999 and 30 September 2000 and outcomes achieved by 31 December 2000.

2. Positive outcomes include employed and education/training outcomes. Positive outcomes are less than the sum of employed and education/training outcomes because some job seekers achieve both an employment and an education outcome.

3. Equity groups are not mutually exclusive.

4. Employment outcomes include some indigenous job seekers who return to a Community Development Employment Projects (CDEP) after leaving labour market assistance.

Source: The Post Programme Monitoring Survey conducted 3 months after job seekers cease assistance.

## Section 2: Access to and Participation in Labour Market Assistance

### Type of labour market assistance

Table 2.1 shows the commencements in Job Network services and other types of labour market assistance during 1999 and 2000. The table also shows the proportion of commencements by job seekers who had been receiving income support [Newstart and Youth Allowance (Other)] for 12 months or more.

Of the 79,000 Intensive Assistance participants transferred to a new Job Network member to complete their assistance under the second contract period, 53,000 commenced assistance. They are treated as a new commencement in this participation measure.

Commencements in the Self Employment Development Scheme (SEDS) are included in this report for the first time. SEDS is an approved activity, which gives job seekers three months to develop their own business as an alternative to seeking a job with an employer. The proposed business must be assessed by a NEIS provider as likely to be commercially viable within 12 months.

The proportion of SEDS participants who were long term income support recipients increased from 43% in 1999 to nearly 58% in 2000.

**Table 2.1: Participation by type of labour market assistance in each of the past two years<sup>1</sup>**

Labour market assistance	Year to end December 1999		Year to end December 2000	
	Commencements (number)	Proportion of long term recipients <sup>2</sup> (%)	Commencements (number)	Proportion of long term recipients <sup>2</sup> (%)
Intensive Assistance <sup>3</sup>	254,235	64.3	319,994	65.3
Job Search Training	53,511	35.3	62,773	17.0
Job Matching <sup>4</sup>	316,248	30.4	297,375	27.2
Job Network Eligible (JNE)	239,989	42.5	202,908	35.8
Job Matching Only (JMO)	67,124	na	90,766	na
NEIS	6,850	na	6,358	na
Self Employment Development Scheme	1,072	42.5	1,408	57.9
Work for the Dole	34,009	59.7	49,521	74.6
IEP - STEP	2,749	33.5	3,194	35.1
IEP - Wage Assistance	610	50.7	2,107	41.4
Community Support Programme	5,658	67.7	13,373	66.7
Return to Work Programme <sup>6</sup>	na	na	2,373	na

1. Commencement or placement of job seekers in labour market assistance funded by DEWRSB for the two years of 1 January to 31 December 1999 and 1 January to 31 December 2000.
  2. The proportion of job seekers who have been registered as unemployed and have been receiving income support including Newstart, Youth Allowance (Other) or other types of income support for 12 months or more.
  3. Figures for the year to end December 2000 are inflated by 53,000 job seekers who transferred between providers as a result of the transition to the second contract period.
  4. Job Matching total is greater than the sum of JNE and JMO as it includes commencements in apprenticeships and traineeships. Job Network Eligible (JNE) are job seekers who may be eligible for all Job Network services. Job Matching Only (JMO) are job seekers who are only eligible for Job Matching services.
  5. Return to Work Programme commenced in February 2000 and many participants are not on income support.
- na – not available.

Source: DEWRSB administrative systems. Community Support Programme commencements provided by Centrelink.

## Access to Job Matching

Access to services and programmes by job seekers with different characteristics will depend on their eligibility and on their assessed capacity to benefit from the assistance provided. To ensure equity of access for job seekers with different characteristics, the proportion in assistance is compared to their proportion of the eligible population.

Job seekers with particular characteristics may be under-represented in some types of assistance but over-represented in others. Hence, it is important to look at all types of assistance in assessing equity of assistance. For example, while indigenous job seekers may be under-represented in some types of assistance, other more specific programmes are directed towards addressing their particular needs.

Table 2.2 shows, for a range of job seeker characteristics for Job Network Eligible job seekers, the proportion that were eligible for services on 31 December 2000 and the proportion that received a placement under Job Matching during 2000. Over 25% of all income support types, for example, were aged 15 to 20 years and they accounted for over 30% of all Job Matching placements during 2000.

This is shown for all income support types and separately for those on the activity tested payments Newstart and Youth Allowance (Other). All income support types include some job seekers who are not subject to the activity test and volunteer to participate in Job Network services.

**Table 2.2: Access to Job Matching by JNE job seeker characteristics<sup>1</sup>**

Job seeker characteristics	All income support types		Newstart/Youth Allowance (Other)	
	Eligibility for Job Matching <sup>2</sup> (%)	Placement in Job Matching <sup>2</sup> (%)	Eligibility for Job Matching <sup>3</sup> (%)	Placement in Job Matching <sup>3</sup> (%)
<b>Age group (years)</b>				
15 to 20	25.6	30.3	12.8	13.7
21 to 24	13.0	17.2	15.9	15.7
25 to 34	23.0	25.1	26.9	26.7
35 to 44	17.9	15.4	20.5	20.4
45 or more	20.5	11.9	23.9	23.5
Total	100.0	100.0	100.0	100.0
<b>Duration on income support (months)</b>				
0 to less than 6	32.5	50.0	28.3	39.8
6 to less than 12	15.2	14.2	14.2	16.0
12 to less than 24	14.2	12.7	16.3	14.6
24 to less than 36	16.5	8.5	12.0	10.4
36 or more	21.7	14.6	29.3	19.2
Total	100.0	100.0	100.0	100.0
<b>Educational attainment</b>				
Less than Year 10	29.7	25.4	25.5	20.3
Year 10	35.1	39.0	36.7	41.8
Year 12	18.1	20.8	18.1	20.9
Post secondary	17.1	14.8	19.7	17.0
Total	100.0	100.0	100.0	100.0
<b>Gender</b>				
Male	62.5	63.7	68.6	68.2
Female	37.5	36.3	31.4	31.8
Total	100.0	100.0	100.0	100.0
<b>Equity groups<sup>4</sup></b>				
Disability	16.5	9.5	18.4	11.0
Indigenous	4.8	2.8	5.1	3.1
Non-English-speaking background	13.4	9.1	15.3	10.6
Sole parents <sup>5</sup>	4.5	2.4	na	na

1. Placements in Job Matching vacancies between 1 January and 31 December 2000.

2. Includes job seekers registered with Centrelink as unemployed and in receipt of the activity tested allowances Newstart and Youth Allowance (Other) or other types of income support payments not subject to activity test requirements at 31 December 2000.

3. Job seekers in receipt of Newstart and Youth Allowance (Other) at 31 December 2000.

4. Equity groups are not mutually exclusive.

5. na – not applicable

Source: DEWRSB administrative systems.

## Access to Job Search Training

Table 2.3 shows, for a range of job seeker characteristics, the proportion of the population that were eligible for Job Search Training compared to the proportion commencing Job Search Training in the year to end December 2000. This is shown for all income support categories and separately for those on the activity tested payments Newstart and Youth Allowance (Other).

All income support types include job seekers who are not subject to the activity test and volunteer to

participate in Job Network services.

Only those job seekers assessed as eligible for Job Search Training under the Job Seeker Classification Instrument (JSCI) have been included in the eligible population.

Nearly 29% of all income support types, for example, were aged 15 to 20 years and they accounted for over 17% of all Job Search Training commencements during 2000.

**Table 2.3: Access to Job Search Training by job seeker characteristics<sup>1</sup>**

Job seeker characteristics	All income support categories		Newstart/Youth Allowance (Other)	
	Eligibility for Job Search Training <sup>2</sup> (%)	Commencement in Job Search Training <sup>2</sup> (%)	Eligibility for Job Search Training <sup>3</sup> (%)	Commencement in Job Search Training <sup>3</sup> (%)
<b>Age group (years)</b>				
15 to 20	28.6	17.5	17.6	15.5
21 to 24	19.7	18.3	23.5	18.9
25 to 34	26.2	29.9	30.3	30.9
35 to 44	16.4	20.9	18.4	21.0
45 or more	9.0	13.4	10.3	13.7
Total	100.0	100.0	100.0	100.0
<b>Duration on income support (months)</b>				
0 to less than 6	51.2	56.6	51.6	56.8
6 to less than 12	18.0	26.4	20.1	26.4
12 to less than 24	14.2	12.9	17.4	12.4
24 to less than 36	6.9	2.5	6.6	2.7
36 or more	9.7	1.6	4.3	1.7
Total	100.0	100.0	100.0	100.0
<b>Educational attainment</b>				
Less than Year 10	9.2	1.2	9.1	1.2
Year 10	33.7	35.8	32.6	35.4
Year 12	28.3	28.1	26.1	27.6
Post secondary	28.8	34.9	32.3	35.7
Total	100.0	100.0	100.0	100.0
<b>Gender</b>				
Male	60.4	65.2	64.5	67.0
Female	39.6	34.8	35.5	33.0
Total	100.0	100.0	100.0	100.0
<b>Equity groups<sup>4</sup></b>				
Disability	7.0	5.8	7.7	5.9
Indigenous	0.6	0.4	0.6	0.4
Non-English-speaking background	7.3	10.3	7.8	10.4
Sole parents	3.6	1.7	na	na

1. Commencement of job seekers in Job Search Training between 1 January and 31 December 2000.

2. Includes job seekers registered with Centrelink as unemployed and in receipt of the activity tested allowances Newstart and Youth Allowance (Other) or other types of income support payments not subject to activity test requirements at 31 December 2000.

3. Job seekers in receipt of Newstart and Youth Allowance (Other) at 31 December 2000.

4. Equity groups are not mutually exclusive.

5. na – not applicable

Source: DEWRSB administrative systems.

## Access to Intensive Assistance

Table 2.4 shows, for a range of job seeker characteristics, the proportion of the population eligible for Intensive Assistance compared with the proportion commencing Intensive Assistance in the year to end December 2000. This is shown for all income support categories and separately for those on the activity tested payments Newstart and Youth Allowance (Other).

Those on income support include job seekers who are not subject to the activity test and volunteer to participate in Job Network services.

As with Job Search Training, only those assessed as eligible for Intensive Assistance under the Job Seeker

Classification Instrument (JSCI) have been included in the eligible population.

Nearly 14% of all income support types, for example, were aged 15 to 20 years and they accounted for an nearly 11% of all Intensive Assistance commencements during 2000.

Job seekers assessed as having higher levels of disadvantage may be under-represented in Intensive Assistance but are able to access the Community Support Programme and programmes administered by the Department of Family and Community Services for people with disabilities. This is reflected in the lower levels of access of job seekers with a disability and those in receipt of income support for 3 years or more.

**Table 2.4: Access to Intensive Assistance by job seeker characteristics<sup>1</sup>**

Job seeker characteristics	All income support categories		Newstart/Youth Allowance (Other)	
	Eligibility for Intensive Assistance <sup>2</sup> (%)	Commencement in Intensive Assistance <sup>2</sup> (%)	Eligibility for Intensive Assistance <sup>3</sup> (%)	Commencement in Intensive Assistance <sup>3</sup> (%)
<b>Age group (years)</b>				
15 to 20	13.6	10.8	10.4	9.8
21 to 24	11.2	11.1	11.9	11.3
25 to 34	24.1	24.4	25.0	24.5
35 to 44	20.9	22.9	21.4	22.8
45 or more	30.1	30.9	31.4	31.6
Total	100.0	100.0	100.0	100.0
<b>Duration on income support (months)</b>				
0 to less than 6	14.8	24.1	13.0	22.7
6 to less than 12	12.6	10.6	10.3	10.6
12 to less than 24	15.9	14.5	16.1	14.1
24 to less than 36	25.5	14.0	15.5	14.2
36 or more	31.2	36.7	45.1	38.4
Total	100.0	100.0	100.0	100.0
<b>Educational attainment</b>				
Less than Year 10	34.7	31.2	34.9	31.4
Year 10	40.3	40.8	39.6	40.5
Year 12	13.5	14.9	13.6	14.9
Post secondary	11.4	13.1	11.9	13.2
Total	100.0	100.0	100.0	100.0
<b>Gender</b>				
Male	67.8	70.1	71.2	72.1
Female	32.2	29.9	28.8	27.9
Total	100.0	100.0	100.0	100.0
<b>Equity groups<sup>4</sup></b>				
Disability	19.2	15.0	19.7	15.2
Indigenous	7.3	5.9	6.9	5.7
Non-English-speaking background	18.9	20.8	19.5	20.9
Sole parents	3.6	2.3	na	na

1. Commencement of job seekers in Intensive Assistance between 1 January and 31 December 2000.

2. Includes job seekers registered with Centrelink as unemployed and in receipt of the activity tested allowances Newstart and Youth Allowance (Other) or other types of income support payments not subject to activity test requirements at 31 December 2000.

3. Job seekers in receipt of Newstart and Youth Allowance (Other) at 31 December 2000.

4. Equity groups are not mutually exclusive.

5. na – not applicable

Source: DEWRSB administrative systems.

## Participation in Work for the Dole

Table 2.5 shows, for a range of job seeker characteristics, the proportion in the eligible population and the proportion commencing Work for the Dole in the year to end December 2000. This is shown only for those on the activity tested payments Newstart and Youth Allowance (Other).

Job seekers aged 35 years or more on Newstart Allowance may volunteer to participate in Work for the Dole. In addition, people who are 18 years old or more and receiving the full rate of Newstart Allowance or Youth Allowance may volunteer to participate in Work for the Dole.

**Table 2.5: Access to Work for the Dole by job seeker characteristics<sup>1</sup>**

Job seeker characteristics	Eligibility for Work for Dole (%)	Commencement in Work for the Dole (%)
<b>Age group (years)</b>		
15 to 20	13.8	20.5
21 to 24	15.7	32.9
25 to 34	26.7	42.7
35 to 44	20.4	2.6
45 or more	23.5	1.2
Total	100.0	100.0
<b>Duration on income support (months)</b>		
0 to less than 6	32.5	12.5
6 to less than 12	14.5	12.8
12 to less than 24	15.1	20.3
24 to less than 36	11.8	15.9
36 or more	26.2	38.4
Total	100.0	100.0
<b>Educational attainment</b>		
Less than Year 10	24.8	21.4
Year 10	36.4	40.5
Year 12	18.1	24.4
Post secondary	20.6	13.6
Total	100.0	100.0
<b>Gender</b>		
Male	68.8	70.7
Female	31.2	29.3
Total	100.0	100.0
<b>Equity groups<sup>3</sup></b>		
Disability	18.6	12.1
Indigenous	6.0	3.8
Non-English-speaking background	15.1	7.7
Sole parents <sup>4</sup>	na	na

1. Commencement of job seekers in Work for the Dole between 1 January and 31 December 2000.

2. Job seekers receiving Newstart and Youth Allowance (Other) as at 31 December 2000.

3. Equity groups are not mutually exclusive.

4. na – not applicable.

Source: DEWRSB administrative systems.

## Section 3: Participation and Outcomes by Region

### Participation in labour market assistance by region

This section presents data on participation by job seekers in labour market assistance for the DEWRSB Labour Market Regions used during the second contract period for Job Network. A map of DEWRSB regions is included in the Technical Notes of this report.

Reporting at a regional level is restricted to the main types of Job Network assistance and Work for the Dole.

Table 3.1 provides details of placements in Job

Matching jobs and commencements in Job Search Training, Intensive Assistance and Work for the Dole in the year to end December 2000.

Intensive Assistance commencements include 53,000 participants who transferred to a new Job Network member to complete their assistance under the second contract period.

The number of placements and commencements in the various types of labour market assistance will depend on the size of the region, labour market conditions and the relative disadvantage of job seekers in the region.

**Table 3.1: Commencements in labour market assistance by region year to end December 2000<sup>1</sup>**

DEWRSB Region	Job Matching (JNE) <sup>2</sup> (Number)	Job Search Training (Number)	Intensive Assistance (Number)	Work for the Dole (Number)
Sydney	26,703	10,415	50,967	6,726
Hunter and North Coast	9,973	3,730	27,392	3,292
Illawarra and SE NSW	5,090	2,140	8,972	1,754
Western NSW	8,985	1,537	8,360	1,478
Riverina	3,939	705	3,756	559
<b>New South Wales</b>	<b>54,690</b>	<b>18,527</b>	<b>99,447</b>	<b>13,809</b>
Melbourne	29,278	10,440	51,457	7,881
Eastern Victoria	6,098	1,803	9,024	1,111
Western Victoria	10,782	2,806	18,137	2,199
<b>Victoria</b>	<b>46,158</b>	<b>15,049</b>	<b>78,618</b>	<b>11,191</b>
Brisbane	31,050	10,422	42,289	8,289
Southern Queensland	9,205	1,664	12,031	2,075
Central and Northern QLD	14,831	2,900	14,275	2,380
<b>Queensland</b>	<b>55,086</b>	<b>14,986</b>	<b>68,595</b>	<b>12,744</b>
Perth	11,848	4,755	18,874	3,381
South Western Australia	3,446	734	3,187	738
Greater Western Australia	2,774	305	3,337	483
<b>Western Australia</b>	<b>18,068</b>	<b>5,794</b>	<b>25,398</b>	<b>4,602</b>
Adelaide	11,806	4,150	21,358	3,748
South Australia Country	7,309	1,172	9,001	969
<b>South Australia</b>	<b>19,115</b>	<b>5,322</b>	<b>30,359</b>	<b>4,717</b>
Tasmania	5,277	1,657	11,884	1,549
Northern Territory	2,495	385	2,799	386
Australian Capital Territory	2,019	1,053	2,894	523
<b>Australia</b>	<b>202,908</b>	<b>62,773</b>	<b>319,994</b>	<b>49,521</b>

1. Commencement or placement in labour market assistance between 1 January and 31 December 2000.

2. Job Matching is JNE job seeker placements and JMO job seeker placements have been excluded.

Source: DEWRSB administrative systems.

## Job Matching placements by region

Table 3.2 shows the number of vacancies notified on the Australian Job Search (AJS) database for the month of December 2000 by DEWRSB region, State and Territory and nationally.

In addition to the 47,000 new vacancies lodged on the AJS, some vacancies lodged in the preceding month remained active during December.

Vacancies lodged in December were lower than

previous months but this reflects seasonal factors.

In total, Job Network members listed over 755,000 job vacancies on the Australian Job Search database.

Also shown are Job Matching placements for both Job Network eligible (JNE) and Job Matching only (JMO) job seekers in each region in the 12 months to end December 2000.

During 2000 over 297,000 job seekers were placed into a Job Matching vacancy.

**Table 3.2: Job Matching placements by region year to end December 2000**

DEWRSB Region	Vacancies notified on AJS in December 2000 <sup>1</sup> (Number)	Job Matching <sup>2</sup> (number)			Share of placements filled by JMO clients (%)
		JNE <sup>3</sup>	JMO <sup>4</sup>	Total <sup>5</sup>	
Sydney	9,128	26,703	13,010	39,985	32.5
Hunter and North Coast	2,357	9,973	3,301	13,492	24.5
Illawarra and SE NSW	1,306	5,090	2,335	7,568	30.9
Western NSW	2,024	8,985	5,963	15,084	39.5
Riverina	849	3,939	2,592	6,647	39.0
<b>New South Wales</b>	<b>15,664</b>	<b>54,690</b>	<b>27,201</b>	<b>82,776</b>	<b>32.9</b>
Melbourne	7,270	29,278	12,130	42,159	28.8
Eastern Victoria	1,346	6,098	3,292	9,502	34.6
Western Victoria	2,403	10,782	5,074	16,209	31.3
<b>Victoria</b>	<b>11,019</b>	<b>46,158</b>	<b>20,496</b>	<b>67,870</b>	<b>30.2</b>
Brisbane	6,284	31,050	13,042	44,504	29.3
Southern Queensland	1,767	9,205	4,244	13,539	31.3
Central and Northern QLD	3,133	14,831	8,021	22,978	34.9
<b>Queensland</b>	<b>11,184</b>	<b>55,086</b>	<b>25,307</b>	<b>81,021</b>	<b>31.2</b>
Perth	2,798	11,848	3,763	15,798	23.8
South Western Australia	611	3,446	1,624	5,146	31.6
Greater Western Australia	746	2,774	2,535	5,322	47.6
<b>Western Australia</b>	<b>4,155</b>	<b>18,068</b>	<b>7,922</b>	<b>26,266</b>	<b>30.2</b>
Adelaide	2,385	11,806	2,554	14,675	17.4
South Australia Country	1,156	7,309	3,052	10,508	29.0
<b>South Australia</b>	<b>3,541</b>	<b>19,115</b>	<b>5,606</b>	<b>25,183</b>	<b>22.3</b>
Tasmania	1,194	5,277	1,551	6,999	22.2
Northern Territory	615	2,495	1,803	4,303	41.9
Australian Capital Territory	444	2,019	880	2,967	29.7
<b>Australia</b>	<b>47,816</b>	<b>202,908</b>	<b>90,766</b>	<b>297,375</b>	<b>30.5</b>

1. Vacancies notified on the Australian Job Search database for the month of December 2000.

2. Placements in eligible Job Matching vacancies between 1 January and 31 December 2000.

3. Job Network Eligible (JNE) job seekers who may be eligible for all Job Network services.

4. Job Matching Only (JMO) are job seekers who are eligible only for Job Matching services.

5. Total is greater than the sum of JNE and JMO placements as this figure includes apprenticeships and traineeships.

Source: DEWRSB administrative systems.

## Labour market assistance by region

Table 3.3 shows the proportions of Newstart and Youth Allowance (Other) recipients as at December 2000 compared to the proportion of Job Matching job placements for Job Network eligible job seekers and

commencements in Job Search Training, Intensive Assistance and Work for the Dole. This is provided on a DEWRSB regional and State and Territory basis.

**Table 3.3: Comparison of labour market assistance by region year to end December 2000<sup>1</sup>**

DEWRSB Region	Newstart/ Youth Allowance (Other) recipients <sup>2</sup> (%)	Job Matching (JNE) <sup>3</sup> (%)	Job Search Training (%)	Intensive Assistance (%)	Work for the Dole (%)
Sydney	13.8	13.2	16.6	15.9	13.6
Hunter and North Coast	8.2	4.9	5.9	8.6	6.6
Illawarra and SE NSW	3.1	2.5	3.4	2.8	3.5
Western NSW	3.0	4.4	2.4	2.6	3.0
Riverina	1.2	1.9	1.1	1.2	1.1
<b>New South Wales</b>	<b>29.3</b>	<b>27.0</b>	<b>29.5</b>	<b>31.1</b>	<b>27.8</b>
Melbourne	15.5	14.4	16.6	16.1	15.9
Eastern Victoria	2.6	3.0	2.9	2.8	2.2
Western Victoria	4.4	5.3	4.5	5.7	4.4
<b>Victoria</b>	<b>22.4</b>	<b>22.7</b>	<b>24.0</b>	<b>24.6</b>	<b>22.5</b>
Brisbane	14.2	15.3	16.6	13.2	16.7
Southern Queensland	3.2	4.5	2.7	3.8	4.2
Central and Northern QLD	5.3	7.3	4.6	4.5	4.8
<b>Queensland</b>	<b>22.8</b>	<b>27.1</b>	<b>23.9</b>	<b>21.4</b>	<b>25.7</b>
Perth	6.9	5.8	7.6	5.9	6.8
South Western Australia	1.4	1.7	1.2	1.0	1.5
Greater Western Australia	1.4	1.4	0.5	1.0	1.0
<b>Western Australia</b>	<b>9.7</b>	<b>8.9</b>	<b>9.2</b>	<b>7.9</b>	<b>9.3</b>
Adelaide	6.6	5.8	6.6	6.7	7.6
South Australia Country	2.5	3.6	1.9	2.8	2.0
<b>South Australia</b>	<b>9.1</b>	<b>9.4</b>	<b>8.5</b>	<b>9.5</b>	<b>9.6</b>
Tasmania	3.6	2.6	2.6	3.7	3.1
Northern Territory	2.1	1.2	0.6	0.9	0.8
Australian Capital Territory	1.0	1.0	1.7	0.9	1.1
<b>Australia</b>	<b>100.0</b>	<b>100.0</b>	<b>100.0</b>	<b>100.0</b>	<b>100.0</b>

1. Commencement or placement of job seekers in labour market assistance between 1 January and 31 December 2000.

2. Job Seekers receiving Newstart or Youth Allowance (Other) as at 31 December 2000.

3. Includes Job Network Eligible job seekers who may be eligible for all Job Network services and excludes Job Matching Only job seekers who are only eligible for Job Matching services.

Source: DEWRSB administrative systems.

## Employment outcomes by region

Table 3.4 shows for job seekers who ceased assistance between 1 October 1999 and 30 September 2000 and unsubsidised employment outcomes achieved by 31 December 2000. Employment outcomes are for Job Matching, Job Search Training, Intensive Assistance and Work for the Dole.

Job Matching includes Job Network Eligible and Job Matching Only job seekers. Outcomes are presented on a DEWRSB regional, State and Territory and national basis.

**Table 3.4: Regional labour market post assistance employment outcomes year to end December 2000<sup>1</sup>**

DEWRSB Region	Job Matching (%) <sup>2</sup>	Job Search Training (%)	Intensive Assistance (%)	Work for the Dole (%)
Sydney	66.8	41.8	34.5	28.0
Hunter and North Coast	68.1	40.8	33.2	23.7
Illawarra and SE NSW	71.2	44.7	33.6	25.5
Western NSW	62.2	36.7	28.6	25.6
Riverina	75.9	47.3	35.0	27.1
<b>New South Wales</b>	<b>67.5</b>	<b>41.7</b>	<b>33.6</b>	<b>25.9</b>
Melbourne	67.9	42.7	36.2	27.8
Eastern Victoria	70.8	43.4	36.0	28.4
Western Victoria	68.6	47.1	40.5	24.1
<b>Victoria</b>	<b>68.5</b>	<b>43.7</b>	<b>37.0</b>	<b>26.8</b>
Brisbane	67.8	43.2	38.2	29.2
Southern Queensland	64.1	45.9	35.5	27.5
Central and Northern QLD	68.2	44.6	38.4	27.1
<b>Queensland</b>	<b>67.2</b>	<b>43.9</b>	<b>37.8</b>	<b>28.6</b>
Perth	65.9	43.4	39.7	26.9
South Western Australia	69.1	41.8	42.6	23.7
Greater Western Australia	62.8	49.6	34.7	31.0
<b>Western Australia</b>	<b>66.0</b>	<b>43.6</b>	<b>39.4</b>	<b>27.0</b>
Adelaide	65.7	41.5	35.3	29.2
South Australia Country	62.8	43.4	35.4	27.1
<b>South Australia</b>	<b>64.4</b>	<b>42.0</b>	<b>35.4</b>	<b>28.6</b>
Tasmania	71.5	44.4	34.6	23.3
Northern Territory	57.1	37.0	30.3	29.5
Australian Capital Territory	81.3	49.4	40.3	25.4
<b>Australia</b>	<b>67.3</b>	<b>42.9</b>	<b>36.0</b>	<b>26.9</b>

1. Post assistance employment outcomes relate to job seekers who ceased Intensive Assistance, Job Search Training or Work for the Dole between 1 October 1999 and 30 September 2000 and outcomes achieved by 31 December 2000. Employment outcomes include some indigenous job seekers who return to a Community Development Employment Projects (CDEP) after leaving labour market assistance. Outcomes for apprenticeships and traineeships are not included.
2. Includes Job Network Eligible job seekers who may be eligible for all Job Network services and Job Matching Only job seekers who are only eligible for Job Matching services.

Source: The Post Programme Monitoring Survey conducted 3 months after job seekers cease assistance.

## Section 4: Impact on Income Support Recipients

### Number of income support recipients

An important goal of employment assistance is to reduce or remove employment barriers experienced by job seekers so they can compete effectively for jobs. Higher levels of employment assistance are provided to the most disadvantaged job seekers.

While this report focuses mainly on the outcomes achieved by individual forms of assistance, it is also important to note that other factors, such as administrative changes and economic conditions, also have a significant impact on the number of income support recipients.

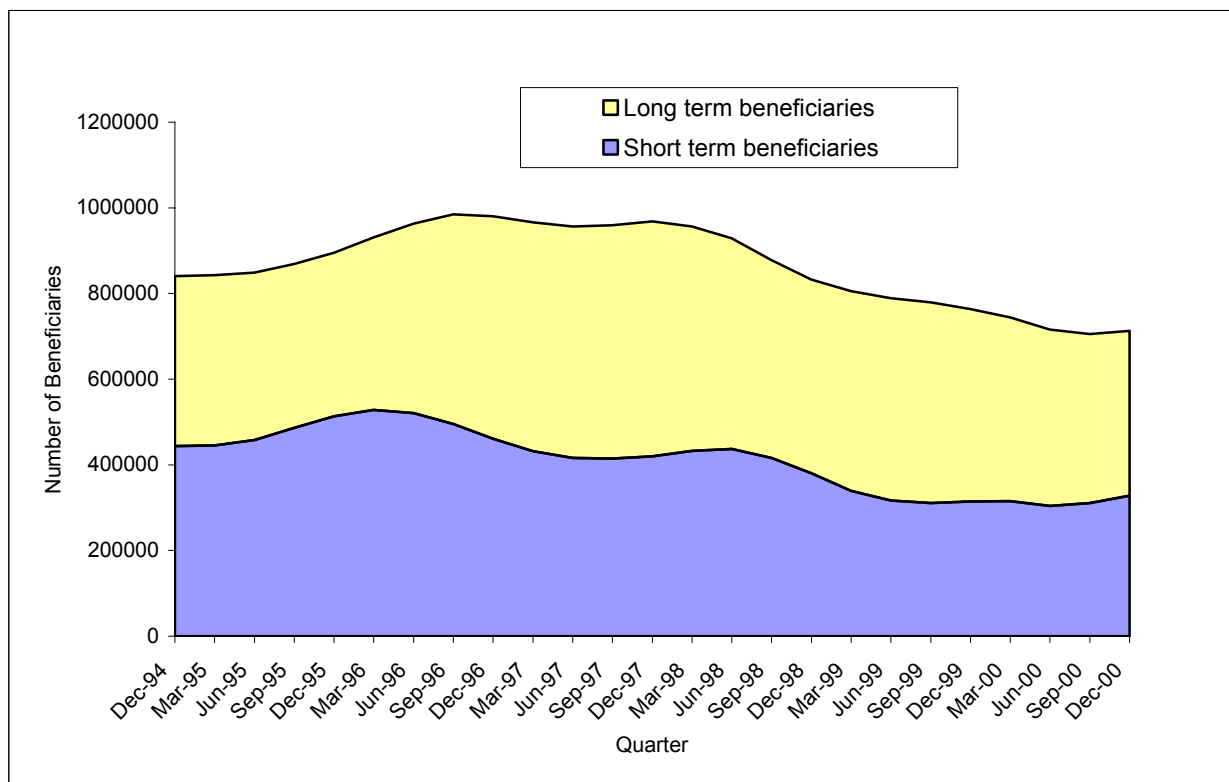
Figure 4.1 shows the changes over time in the number of short and long term income support recipients. Many long term recipients (in receipt of Newstart and Youth Allowance (Other) for 12 months or more) will have had a job at some time

over the last 12 months. These job seekers are reclassified as short term recipients only if they remain totally off benefits for a continuous period of more than 13 weeks.

Hence, long term recipients should not be confused with the long term unemployed as defined by the Australian Bureau of Statistics. The long term unemployed are people currently looking for work who have not had a full-time job that lasted for 2 weeks or more in the last year.

Data from the Department of Family and Community Services show that in the 12 months to the end of December 2000, the number of people in receipt of Newstart or Youth Allowance (Other) decreased by over 51,700 to around 668,200 job seekers. Long term recipients decreased at a faster rate compared to short term recipients and accounted for nearly 46,400 (or 90%) of this decrease.

**Figure 4.1: Number of Income Support Recipients<sup>1</sup>**



1. Data from DEWRSB administrative systems and is seasonally adjusted and smoothed. Figures quoted in the text are from the Department of Family and Community Services: "Labour Market and Related Payments a monthly profile, December 2000".

### Data sources

The Department uses a number of data sources to determine the outcomes achieved by job seekers during and after they have ceased labour market assistance.

*Post Programme Monitoring (PPM) surveys* have been undertaken since 1987 and used to assess the employment and education status of former programme participants three months after they exit assistance. The PPM survey attempts a full enumeration of all former programme participants except in the case of Job Matching where a sample of around 10% of job placements are followed up. Job seekers who leave employment assistance and then proceed to another employment assistance place before selection in the PPM survey, are excluded from the survey. For monitoring purposes these job seekers are considered to be in further assistance.

The overall response rate for the PPM survey, at around 60%, provides outcomes estimates that are generally accurate to within plus or minus 1 percentage point at the National level.

DEWRSB administrative systems record details of placements, commencements and paid outcomes for labour market assistance.

The PPM outcomes for Intensive Assistance are derived from two sources - DEWRSB administrative systems and the PPM survey. The administrative system provides information on the primary and secondary paid interim outcomes for job seekers three months after their placement into a job. The PPM survey provides the employment and training status of job seekers three months after they exited assistance without having achieved a paid interim outcome. The addition of the paid interim and PPM survey outcomes data for unpaid exits provides the labour force status for participants at the three month point in time and is comparable to measurements for other types of employment assistance.

### Post Programme Monitoring Outcomes

#### PPM Measures of Outcomes

Table A below provides a summary of PPM Outcomes under current employment assistance (Job Network), mutual obligation arrangements (Work for the Dole) and a range of previous labour market programmes that operated in the mid-1990s (under the *Working Nation* banner). There are three measures of Outcomes rates:

- *employment* (the proportion of participants who achieved an employment outcome compared to all those who left assistance);
- *education and/or training* (the proportion of participants who achieved an education and/or training outcome compared to all those who left assistance); and
- *'positive' outcomes* (the proportion of participants who achieved an employment or education and training outcome compared to all those who left assistance).

#### Methodology for Measuring Outcomes Rates

In calculating PPM outcomes rates, a decision has to be made about the treatment of those participants who left the programme and went on to further assistance: whether they are included or excluded from the measure of outcomes:

- under past PPM methodology, this group was *excluded* from the measure. It is evident, however, that this resulted in higher outcomes rates when there was a high rate of churning between programmes (as reflected in the figures for "Further Assistance" in Table A);
- an improved methodology has been adopted that *includes* all participants who went on to further assistance. This provides a more comprehensive picture of what has happened to all participants in programmes.
  - this methodology is consistent with how the *cost per employment outcome* from programmes has always been measured in the Department's evaluations of labour market programmes.

Measures provided under the new methodology are set out in the final three right-hand columns of Table A. The previous estimates, based on the old method, are in the left-hand columns for comparative purposes only.

**Table A: PPM Outcomes (3 months) (%): Old and New Methods**

	<i>Old Method</i>			Further Assistance	<i>New Method</i>		
	Employment outcomes	Education & Training Outcomes	Positive Outcomes <sup>1</sup>		Employment outcomes	Education & Training Outcomes	Positive Outcomes <sup>2</sup>
<b>Job Network<sup>3</sup></b>							
Job Search Training	40.0	13.2	48.9	5.3	37.9	12.5	46.3
Intensive Assistance	35.9	7.9	42.4	2.6	35.0	7.7	41.3
NEIS	81.8	8.9	84.1	0.0	81.8	8.9	84.1
<b>IEP</b>							
STEP	67.3	22.4	72.4	6.4	63.0	22.8	67.8
Wage Assistance	57.3	13.4	61.0	6.1	53.8	12.6	57.3
<b>Work for the Dole<sup>3</sup></b>	32.9	13.3	42.8	16.6	27.4	11.1	35.7
<b>Working Natio<sup>4</sup></b>							
Job Clubs	36.4	10.8	43.8	31.7	24.9	7.4	29.9
<b>Working Nation<sup>5</sup></b>							
Job Skills	35.1	12.4	44.3	22.0	27.4	9.7	34.6
JobTrain	31.9	8.9	37.8	11.7	28.1	7.8	33.4
JobStart	33.7	12.3	42.7	30.0	23.6	8.6	29.9
LEAP	52.8	6.4	56.3	8.5	48.3	5.9	51.5
New Work Opportunities	25.8	10.3	33.7	13.1	22.4	8.9	29.3
SkillShare	21.0	5.2	24.8	14.8	17.9	4.4	21.1
Special Intervention	36.9	14.0	47.0	17.8	30.3	11.5	38.6
	21.4	20.7	39.4	38.7	13.1	12.7	24.2

1. The proportion of participants that achieved an employment and/or education/ training outcome *excluding* those who went onto further assistance.

2. The proportion of participants that achieved an employment and/or education/ training outcome *including* those who went onto further assistance.

3. Outcomes achieved in the 1999-2000 financial year.

4. This relates to the Working Nation programme, Job Clubs, which is similar to Job Search Training: outcomes for 1995-96 financial year.

5. Working Nation programmes replaced by Intensive Assistance: outcomes are for 1995-96 financial year. The results show the weighted average for the seven programmes and for each programme

Source: The Post Programme Monitoring Survey conducted 3 months after job seekers cease assistance and DEWRSB administrative systems.

## Labour Market Assistance

*Intensive Assistance:* provides individually tailored assistance for up to two years to eligible job seekers who are more disadvantaged in the labour market, to prepare for, and obtain, sustainable employment. The level of funding is based on the job seekers' level of disadvantage. Under the first contract period there were three funding levels, 3.1, 3.2 and 3.3 with the latter category experiencing higher levels of disadvantage compared to other funding levels. Under the second contract period there are two funding levels, A and B. Funding levels 3.2 and 3.3 have been combined to form funding level B.

Job seekers who transferred to a new provider as a result of the second contract period are treated as a new commencement but as the job seekers period of assistance has not been completed, they are not considered to have exited from assistance for the purposes of estimating labour market assistance outcomes.

*Job Search Training:* provides training for three weeks in job search techniques (such as résumé preparation, interview techniques and presentation skills) to give unemployed people the skills and confidence to seek and obtain employment.

*Job Matching:* delivers labour exchange services to job seekers including canvassing for jobs and matching and placing suitable unemployed people to these jobs, as well as preparing résumés for job seekers.

*New Enterprise Incentive Scheme (NEIS):* provides support and training for eligible job seekers who wish to pursue the option of self-employment.

*Work for the Dole:* provides assistance for job seekers to develop work habits, generic work skills and gain work experience by participating in community projects and activities, usually over a 26 week period.

*Indigenous Employment Programme:* replaced the Training for Aboriginals and Torres Strait Islanders Programme (TAP) and has several components. It includes Wage Assistance which is a wage subsidy paid to employers over 26 weeks providing on-going employment. In Structured Training and Employment Projects (STEP) employers in the private sector and regional and community based employment sponsor organisations provide at least 5 jobs, generally involving accredited training, usually a traineeship, to participants for a minimum period of 12 months.

*Community Support Programme:* helps disadvantaged job seekers access counselling, stable accommodation, alcohol or drug rehabilitation and other activities addressing significant needs. Participation is voluntary and assistance can be for up to two years.

*Return to Work Programme:* helps job seekers who have been absent for two years or more due to unpaid caring responsibilities increase their skills and confidence so they can re-enter the work force.

*Self-Employment Development Scheme (SEDS):* allow job seekers to undertake approved activities to develop self-employment opportunities for three months. The business viability is assessed by a NEIS Managing agent and approved by Centrelink.

## Definitions

*Australian Job Search:* Lists all vacancies notified to the Job Network and provides information on Job Network members. Is available in Centrelink and Job Network member offices and the DEWRSB Internet site.

*Community Development Employment Projects (CDEP):* administered by the Aboriginal and Torres Strait Islander Commission - a scheme generally providing opportunities for part time work paid at the equivalent of unemployment allowances to residents of indigenous communities in remote locations.

*Community Work Coordinators:* are contracted to develop Work for the Dole projects/activities and manage the placement of eligible job seekers into those projects/activities.

*Eligible vacancy:* is a job vacancy listed on the Australian Job Search database that are eligible for a payment under Job Matching.

*Further Assistance:* includes job seekers who proceed to another DEWRSB or DETYA funded employment assistance within three months exiting other employment assistance. It includes commencements in Job Search Training, Intensive Assistance, New Apprenticeships, NEIS, Work for the Dole, Green Corps, Advanced English for Migrants Programme (AEMP) and IEP - STEP and IEP - Wage Assistance. Job Matching is not regarded as further assistance.

*Income support recipients:* includes job seekers registered with Centrelink as unemployed and in

receipt of Newstart Allowance (NSA) or job seekers aged 15 to 24 not in full-time education and in receipt of Youth Allowance (YA).

*Job Matching Only (JMO):* Job seekers, irrespective of income support who are eligible for Job Matching Only services but not eligible for other Job Network services. JMOs can renew their registration as unemployed every three months with either Centrelink or Job Network members.

*Job Matching placements:* include placements provided under Job Matching and job placements under Intensive Assistance.

*Job Network Eligible (JNE):* Job seekers who are receiving income support payments, and young people not in full-time study irrespective of income support. CDEP participants are eligible for Job Matching services. These people may be eligible for other Job Network services, subject to eligibility requirements.

*Job Seeker Classification Instrument (JSCI):* a measurement of a job seeker's relative disadvantage in obtaining employment and is used to determine the level of labour market assistance required.

*Long term recipients:* Job seekers who have been registered with Centrelink as unemployed for 12 months or more and receiving income support.

*NESB:* migrants from a Non-English-speaking background.

*Outcomes qualifying for a claim for payment:* Intensive Assistance or case management outcomes where the conditions for a claim for a paid outcome have been met. An actual claim may or may not have been made. This has not been included in this report.

*Placed, awaiting an outcome:* Placement of an Intensive Assistance job seeker in employment or study but where the 13 week paid outcome mark has yet to be reached. This has not been included in this report.

*Paid Interim Outcomes:* Intensive Assistance outcomes where a claim for payment has been approved after placement of a job seeker in employment or study for 13 weeks. This has not been included in this report.

*Paid Final Outcomes:* Intensive Assistance outcomes where a claim for payment has been approved after placement of a job seeker in employment or study for 26 weeks. This has not been included in this report.

*Post Assistance Income Support Outcomes:* refers to the proportion of Newstart or Youth Allowance (Other) recipients who were off Newstart or Youth Allowance (Other) or any other type allowance recorded on the Integrated Employment System three months after leaving assistance. Job seekers who move from Newstart or Youth Allowance (Other) to income support payments not recorded on the

Integrated Employment System, such as the Community Employment Development Projects (CDEP), age pension or any other pension where the job seekers is not registered with Centrelink as looking for work, are counted as off-benefit outcomes.

*Short Term Recipients:* are job seekers who have been registered with Centrelink as unemployed for less than 12 months and in receipt of income support.

*Unpaid exits:* Exits from Intensive Assistance that do not involve a paid outcome.

*Very Long Term Recipients:* are job seekers who have been registered with Centrelink as unemployed and in receipt of income support for 24 months or more unless otherwise stated.

## Regional Coverage

Regions used in this report are based on the 19 tender regions for the second Job Network contract period.

### DEWRSB labour market regions

