



# AUSTRALIAN REGIONAL LABOUR MARKETS

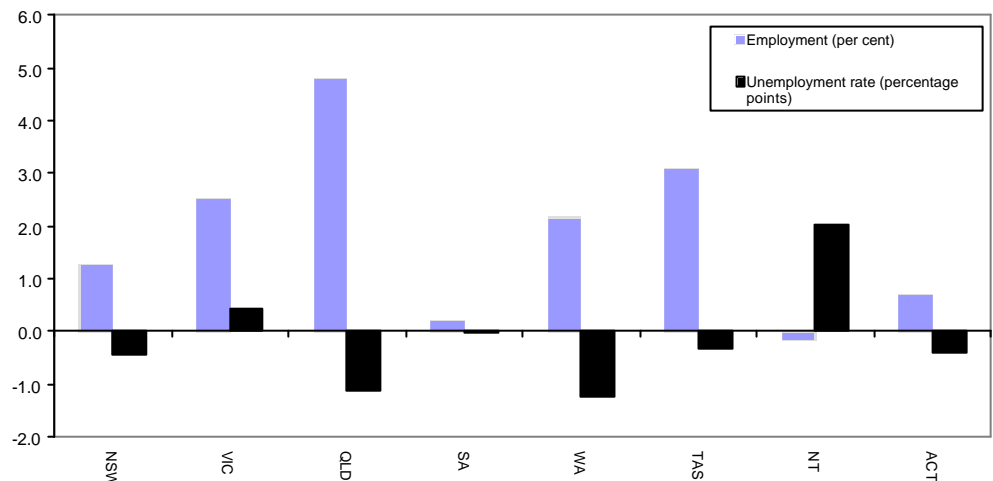
## SEPTEMBER QUARTER 2004

### MAIN FINDINGS

#### State/Territory labour market developments

Over the year to the September quarter 2004, employment rose in all States and the ACT. The largest increase (in percentage terms) was recorded in Queensland (up by 4.8 per cent), followed by Tasmania (up by 3.1 per cent) and Victoria (up by 2.5 per cent). Over the same period, the unemployment rate fell in all States, except Victoria (where it rose by 0.4 percentage points) and South Australia (where it remained unchanged). The unemployment rate fell in the ACT but rose in the Northern Territory.

#### CHANGE IN EMPLOYMENT AND THE UNEMPLOYMENT RATE, SEPTEMBER QUARTER 2003 TO SEPTEMBER QUARTER 2004



#### Developments at the ABS Labour Market Region Level

Employment increased in 73 per cent of regions over the year to the September quarter 2004 while almost two-thirds of regions recorded a reduction in their unemployment rate. A number of regions have recorded strong employment growth as well as a significant reduction in their unemployment rate over the last 12 months. In particular:

- North and West Moreton in Queensland recorded a 12.9 per cent increase in employment while the unemployment rate fell by 2.2 percentage points to 5.2 per cent;
- employment in Goulburn-Ovens-Murray rose by 12.4 per cent while the unemployment rate fell by 1.1 percentage points to 3.3 per cent; and
- Wollongong in New South Wales recorded a 7.9 per cent increase in employment while the unemployment rate fell by 1.6 percentage points to 6.2 per cent.

**LABOUR FORCE STATUS BY ABS LABOUR FORCE REGIONS  
SEPTEMBER QUARTER 2004  
Not Seasonally Adjusted**

State/Region	Employed		Unemployed		Unemployment rate		Participation rate	
	'000	Annual change	'000	Annual change	%	Annual change % pts	%	Annual change % pts
<b>AUSTRALIA</b>	<b>9683.8</b>	<b>216.3</b>	<b>551.5</b>	<b>-27.6</b>	<b>5.4</b>	<b>-0.4</b>	<b>63.4</b>	<b>0.2</b>
<i>Metropolitan Australia*</i>	<i>6142.3</i>	<i>170.4</i>	<i>321.4</i>	<i>-35.0</i>	<i>5.0</i>	<i>-0.7</i>	<i>64.4</i>	<i>0.4</i>
<i>Non-metropolitan Australia*</i>	<i>3541.5</i>	<i>45.9</i>	<i>230.1</i>	<i>7.4</i>	<i>6.1</i>	<i>0.1</i>	<i>61.7</i>	<i>-0.2</i>
<b>New South Wales</b>	<b>3186.7</b>	<b>40.3</b>	<b>172.9</b>	<b>-12.6</b>	<b>5.1</b>	<b>-0.4</b>	<b>62.1</b>	<b>-0.2</b>
<i>Sydney</i>	<i>2100.6</i>	<i>39.3</i>	<i>96.3</i>	<i>-16.3</i>	<i>4.4</i>	<i>-0.8</i>	<i>64.2</i>	<i>0.0</i>
Inner Sydney and Inner Western Sydney	261.8	11.8	11.1	-3.3	4.1	-1.4	67.4	1.4
Inner Sydney	174.3	5.3	8.3	0.0	4.6	-0.1	69.0	1.3
Eastern Suburbs	127.4	6.0	4.9	0.4	3.7	0.1	62.6	2.6
St George-Sutherland	232.8	7.8	8.5	1.5	3.5	0.5	66.4	1.9
Canterbury-Bankstown	128.4	1.4	9.4	-0.5	6.8	-0.4	54.6	-0.1
Fairfield-Liverpool/ Outer South Western Sydney	279.7	9.7	16.8	-2.7	5.7	-1.1	64.8	0.7
Fairfield-Liverpool	161.7	5.5	9.5	-2.4	5.6	-1.5	62.0	0.3
Central Western Sydney	133.2	-12.0	5.8	-3.2	4.2	-1.7	56.8	-6.9
North Western Sydney	283.6	-3.7	14.3	-6.3	4.8	-1.9	65.1	-3.0
Lower Northern Sydney	164.5	5.9	5.2	-2.4	3.1	-1.5	66.8	0.8
Central Northern Sydney	223.0	2.7	5.5	0.3	2.4	0.1	68.0	0.1
Northern Beaches	135.9	1.6	3.6	0.1	2.5	0.0	71.4	0.2
Gosford-Wyong	130.3	8.0	11.2	-0.3	7.9	-0.7	58.3	2.5
<i>Balance of New South Wales</i>	<i>1086.1</i>	<i>1.0</i>	<i>76.6</i>	<i>3.7</i>	<i>6.6</i>	<i>0.3</i>	<i>58.5</i>	<i>-0.4</i>
Hunter	274.6	14.2	18.4	1.3	6.3	0.1	60.7	2.5
Newcastle	226.5	2.2	15.7	1.4	6.5	0.5	59.9	0.2
Illawarra and South Eastern	263.0	-2.3	18.3	0.7	6.5	0.3	57.8	-1.1
Illawarra	170.5	5.0	12.7	-0.2	6.9	-0.3	55.9	0.8
Wollongong	119.4	8.8	7.9	-1.5	6.2	-1.6	57.5	2.7
Richmond-Tweed/ Mid-North Coast	183.8	-18.3	17.7	1.2	8.8	1.2	49.4	-4.9
Northern/ Far West-North Western/ Central West	229.8	1.5	15.7	2.8	6.4	1.0	61.4	0.4
Murray-Murrumbidgee	134.9	6.0	6.5	-2.2	4.6	-1.8	67.0	1.1
<b>Victoria</b>	<b>2410.1</b>	<b>59.2</b>	<b>151.1</b>	<b>14.7</b>	<b>5.9</b>	<b>0.4</b>	<b>63.6</b>	<b>0.8</b>
<i>Melbourne</i>	<i>1795.6</i>	<i>66.5</i>	<i>103.9</i>	<i>3.1</i>	<i>5.5</i>	<i>0.0</i>	<i>64.8</i>	<i>1.3</i>
Outer Western Melbourne	282.8	16.7	24.4	2.2	7.9	0.2	65.5	2.9
North Western Melbourne	126.6	4.1	9.0	1.8	6.6	1.1	60.1	1.7
Inner Melbourne	148.0	-1.6	11.7	5.5	7.3	3.3	69.2	0.6
North Eastern Melbourne	213.2	4.4	12.0	-1.2	5.3	-0.6	63.1	-0.1
Inner Eastern Melbourne	301.0	11.7	12.5	-3.0	4.0	-1.1	62.3	0.8
Southern Melbourne	208.5	10.0	10.8	3.9	4.9	1.6	65.6	3.3
Outer Eastern Melbourne	212.3	-2.0	8.6	-1.5	3.9	-0.6	69.1	-2.3
South Eastern Melbourne	181.5	14.3	7.9	-4.7	4.2	-2.9	65.4	2.1
Mornington Peninsula	121.7	9.0	6.9	0.1	5.4	-0.3	63.0	3.4
<i>Balance of Victoria</i>	<i>614.5</i>	<i>-7.3</i>	<i>47.2</i>	<i>11.7</i>	<i>7.1</i>	<i>1.7</i>	<i>60.5</i>	<i>-0.6</i>
Barwon-Western District	158.1	-7.9	13.5	4.5	7.9	2.7	58.4	-2.1
Central Highlands-Wimmera	78.5	-10.2	9.2	3.4	10.5	4.4	55.3	-5.3
Loddon-Mallee	116.5	-8.5	10.5	4.0	8.3	3.3	60.3	-3.2
Goulburn-Ovens-Murray	148.0	16.3	5.1	-0.9	3.3	-1.1	65.8	5.5
All Gippsland	113.4	3.0	8.9	0.7	7.3	0.4	62.0	0.9

\* The ABS defines metropolitan as those regions located within the State capital cities. Non-metropolitan is defined as those regions located outside the State capital cities as well as the two Territories.

**LABOUR FORCE STATUS BY ABS LABOUR FORCE REGIONS**  
**SEPTEMBER QUARTER 2004**  
**Not Seasonally Adjusted**

State/Region	Employed		Unemployed		Unemployment rate		Participation rate	
	'000	Annual change	'000	Annual change	%	Annual change % pts	%	Annual change % pts
<b>Queensland</b>	<b>1905.1</b>	<b>87.1</b>	<b>103.6</b>	<b>-18.5</b>	<b>5.2</b>	<b>-1.1</b>	<b>65.1</b>	<b>0.6</b>
Gold Coast	216.8	5.4	12.5	-3.6	5.4	-1.6	61.1	-1.2
<i>Brisbane</i>	<i>901.0</i>	<i>36.1</i>	<i>43.3</i>	<i>-10.6</i>	<i>4.6</i>	<i>-1.3</i>	<i>66.8</i>	<i>0.1</i>
Brisbane City Inner Ring	243.2	25.0	10.6	-2.5	4.2	-1.5	73.4	4.9
Brisbane City Outer Ring	273.7	-1.3	12.9	-1.3	4.5	-0.4	64.2	-2.3
South and East Brisbane Balance	189.1	9.8	9.2	-5.1	4.6	-2.7	67.2	-0.1
North and West Brisbane Balance	195.0	2.7	10.6	-1.7	5.2	-0.9	63.1	-1.4
<i>Balance of Queensland</i>	<i>1004.2</i>	<i>51.0</i>	<i>60.3</i>	<i>-7.9</i>	<i>5.7</i>	<i>-1.0</i>	<i>63.6</i>	<i>1.0</i>
South and East Moreton	205.6	-1.2	11.3	-3.0	5.2	-1.3	60.3	-2.9
North and West Moreton	163.7	18.7	9.0	-2.7	5.2	-2.2	62.3	4.2
Wide Bay-Burnett	96.0	8.5	11.4	1.6	10.6	0.6	53.6	3.8
Darling Downs-South West	117.7	-7.2	5.7	-0.9	4.6	-0.4	62.7	-5.8
Mackay-Fitzroy-Central West	180.5	17.9	10.6	0.0	5.5	-0.6	69.9	5.0
Northern-North West	120.3	8.7	7.0	-1.0	5.5	-1.2	69.5	2.5
Far North	120.5	5.7	5.4	-1.9	4.3	-1.7	68.6	0.4
<b>South Australia</b>	<b>720.7</b>	<b>1.5</b>	<b>45.5</b>	<b>-0.1</b>	<b>5.9</b>	<b>0.0</b>	<b>61.3</b>	<b>-0.4</b>
<i>Adelaide</i>	<i>529.4</i>	<i>4.1</i>	<i>35.4</i>	<i>-0.9</i>	<i>6.3</i>	<i>-0.2</i>	<i>61.0</i>	<i>-0.2</i>
Northern Adelaide	160.6	3.6	14.3	-0.4	8.2	-0.4	62.1	0.6
Western Adelaide	95.2	3.7	6.0	-0.9	5.9	-1.1	56.4	1.1
Eastern Adelaide	113.6	-0.8	4.2	-1.1	3.5	-0.9	61.3	-1.5
Southern Adelaide	160.0	-2.4	11.0	1.5	6.4	0.9	62.8	-0.9
<i>Balance of South Australia</i>	<i>191.2</i>	<i>-2.6</i>	<i>10.1</i>	<i>0.8</i>	<i>5.0</i>	<i>0.4</i>	<i>62.0</i>	<i>-1.1</i>
Northern and Western SA	71.7	3.1	4.4	-1.5	5.7	-2.1	60.1	0.8
Southern and Eastern SA	119.5	-5.7	5.7	2.3	4.6	1.9	63.2	-2.4
<b>Western Australia</b>	<b>978.1</b>	<b>20.7</b>	<b>48.6</b>	<b>-12.3</b>	<b>4.7</b>	<b>-1.3</b>	<b>64.6</b>	<b>-0.9</b>
<i>Perth</i>	<i>724.3</i>	<i>21.7</i>	<i>36.5</i>	<i>-10.6</i>	<i>4.8</i>	<i>-1.5</i>	<i>64.6</i>	<i>-0.4</i>
Central Metropolitan	68.1	3.2	2.1	-1.2	2.9	-1.9	65.4	0.6
East Metropolitan	122.8	3.7	4.3	-2.4	3.4	-1.9	63.6	-0.7
North Metropolitan	219.5	2.5	12.2	-0.8	5.3	-0.4	65.7	-0.9
South West Metropolitan	147.3	7.4	7.6	-3.8	4.9	-2.6	62.9	0.1
South East Metropolitan	166.7	5.0	10.3	-2.4	5.8	-1.5	65.1	-0.4
<i>Balance of Western Australia</i>	<i>253.7</i>	<i>-1.0</i>	<i>12.1</i>	<i>-1.7</i>	<i>4.5</i>	<i>-0.6</i>	<i>64.5</i>	<i>-2.1</i>
Lower Western WA	123.9	-2.3	6.3	-1.5	4.8	-1.0	58.8	-3.2
Remainder-Balance WA	129.8	1.3	5.8	-0.2	4.3	-0.2	71.2	-0.9
<b>Tasmania</b>	<b>213.0</b>	<b>6.4</b>	<b>15.5</b>	<b>-0.3</b>	<b>6.8</b>	<b>-0.3</b>	<b>59.2</b>	<b>0.7</b>
Greater Hobart-Southern	106.7	2.9	7.3	1.1	6.4	0.7	59.6	1.2
<i>Greater Hobart</i>	<i>91.3</i>	<i>2.7</i>	<i>6.0</i>	<i>0.3</i>	<i>6.2</i>	<i>0.1</i>	<i>59.5</i>	<i>0.9</i>
Northern	61.6	2.0	4.3	-1.3	6.5	-2.1	60.6	-0.3
Mersey-Lyell	44.6	1.5	3.9	-0.1	8.1	-0.4	56.3	1.0
<b>Northern Territory</b>	<b>94.7</b>	<b>-0.2</b>	<b>7.4</b>	<b>2.2</b>	<b>7.2</b>	<b>2.0</b>	<b>70.8</b>	<b>0.9</b>
<b>Australian Capital Territory</b>	<b>175.4</b>	<b>1.2</b>	<b>7.0</b>	<b>-0.7</b>	<b>3.8</b>	<b>-0.4</b>	<b>71.0</b>	<b>-0.2</b>

---

## EXPLANATORY NOTES

### **Introduction**

The regional labour market estimates presented in this brochure are three monthly averages derived from the Australian Bureau of Statistics (ABS) Monthly Labour Force Survey. These estimates are not adjusted to take account of seasonal and other variations and can exhibit irregular movements. They should therefore be used with caution.

### **Related information**

Users may wish to refer to the DEWR *Small Area Labour Markets, Australia* publication which is available at <http://www.workplace.gov.au> or free of charge upon request. This publication contains quarterly estimates of unemployment rates and levels for approximately 1,350 Statistical Local Areas.

### **Next issue**

The next issue of *Australian Regional Labour Markets*, for the December quarter 2004, is expected to be released in late January 2005.

### **Contact details**

This brochure was prepared by the Economic and Labour Market Analysis Branch, Department of Employment and Workplace Relations, Canberra. For further information on this brochure or related statistics, contact Julianne Best in the Labour Market Analysis Section on (02) 6121 5861 or email [julianne.best@dewr.gov.au](mailto:julianne.best@dewr.gov.au).

More detailed monthly National, State and regional labour force statistics are available from the ABS. For further information on ABS labour force statistics, contact Peter Bradbury on (02) 6252 6565.