



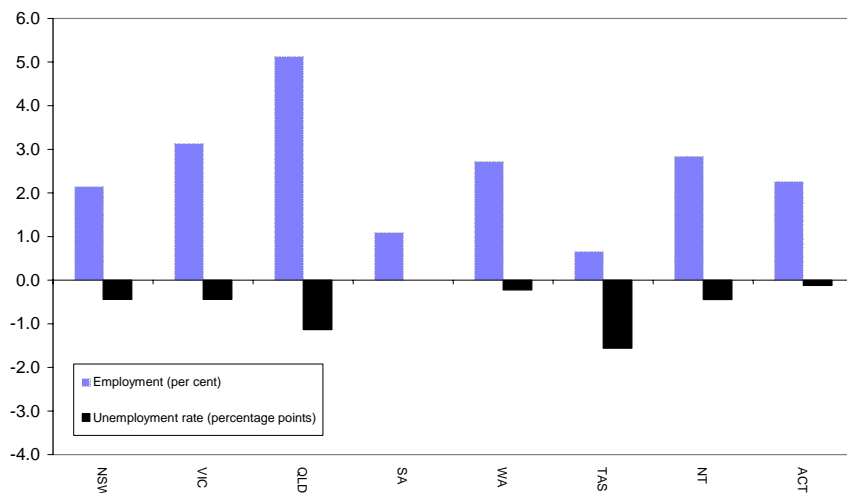
AUSTRALIAN REGIONAL LABOUR MARKETS JUNE QUARTER 2007

MAIN FINDINGS

State/Territory labour market developments

Employment rose in all States and Territories over the year to the June quarter 2007. The largest increase (in percentage terms) was recorded in Queensland (up by 5.1 per cent), followed by Victoria (up by 3.1 per cent) and the Northern Territory (up by 2.8 per cent). The unemployment rate fell in all States and Territories except South Australia, where it was unchanged. The largest falls over the year were recorded in Tasmania (down by 1.6 percentage points to 4.5 per cent) and Queensland (down by 1.1 percentage points to 3.5 per cent).

**CHANGE IN EMPLOYMENT AND THE UNEMPLOYMENT RATE
JUNE QUARTER 2006 TO JUNE QUARTER 2007**



Developments at the ABS Labour Force Region Level

Employment increased in 75 per cent of regions over the year to the June quarter 2007. Similarly, 75 per cent of regions recorded a reduction in their unemployment rate over this period. A number of regions have recorded strong employment growth as well as a significant reduction in their unemployment rate over the last 12 months. In particular:

- Wide Bay-Burnett in Queensland recorded a 9.9 per cent increase in employment while the unemployment rate fell by 2.3 percentage points to 5.4 per cent;
- The Illawarra in New South Wales also recorded a 9.9 per cent increase in employment while the unemployment rate fell by 2.4 percentage points to 5.5 per cent; and
- employment in Southern Adelaide rose by 5.8 per cent while the unemployment rate fell by 0.8 percentage points to 4.7 per cent.

LABOUR FORCE STATUS BY ABS LABOUR FORCE REGIONS
JUNE QUARTER 2007
Not Seasonally Adjusted

State/Region	Employed		Unemployed		Unemployment rate		Employment rate (a)		Participation rate	
	'000	Annual change	'000	Annual change	%	Annual change (% pts)	%	Annual change (% pts)	%	Annual change (% pts)
AUSTRALIA	10 442.8	299.0	470.3	-47.4	4.3	-0.5	72.8	0.8	64.9	0.4
<i>Metropolitan Australia (b)</i>	<i>6546.3</i>	<i>151.3</i>	<i>288.0</i>	<i>-12.4</i>	<i>4.2</i>	<i>-0.3</i>	<i>73.1</i>	<i>0.5</i>	<i>65.5</i>	<i>0.3</i>
<i>Non-metropolitan Australia (b)</i>	<i>3896.4</i>	<i>147.6</i>	<i>182.3</i>	<i>-34.9</i>	<i>4.5</i>	<i>-1.0</i>	<i>72.4</i>	<i>1.4</i>	<i>63.9</i>	<i>0.6</i>
New South Wales	3345.2	70.4	169.5	-12.4	4.8	-0.4	71.0	0.6	63.2	0.3
<i>Sydney</i>	<i>2178.5</i>	<i>27.7</i>	<i>101.6</i>	<i>-3.9</i>	<i>4.5</i>	<i>-0.2</i>	<i>71.8</i>	<i>-0.1</i>	<i>64.8</i>	<i>-0.1</i>
Inner Sydney and Inner Western Sydney	259.8	-11.7	14.6	0.8	5.3	0.5	72.1	-1.3	65.8	-3.3
Inner Sydney	180.5	-6.8	8.2	-2.6	4.4	-1.1	74.7	-0.1	69.1	-4.2
Eastern Suburbs	128.7	-7.8	3.1	-0.6	2.4	-0.3	74.0	-1.4	61.0	-4.6
St George-Sutherland	236.0	5.5	9.1	1.5	3.7	0.5	76.1	0.5	65.8	1.1
Canterbury-Bankstown	140.7	5.6	9.6	1.1	6.4	0.5	64.3	0.2	57.9	1.9
Fairfield-Liverpool/ Outer South Western Sydney	296.5	29.9	23.1	1.1	7.2	-0.4	69.0	3.9	67.7	5.8
Fairfield-Liverpool	166.0	19.0	14.2	1.3	7.9	-0.2	65.0	3.7	63.2	6.4
Central Western Sydney	145.0	6.6	6.8	-2.1	4.5	-1.6	64.8	0.0	60.3	1.1
North Western Sydney	294.2	3.2	15.5	0.7	5.0	0.2	69.7	-1.1	65.8	0.0
Lower Northern Sydney	172.0	-1.9	4.2	-1.8	2.4	-1.0	77.4	0.5	67.5	-2.2
Central Northern Sydney	234.1	1.3	4.6	-1.8	1.9	-0.7	77.0	-1.3	69.1	-1.0
Northern Beaches	138.2	6.0	2.8	0.0	2.0	-0.1	81.4	0.3	70.3	2.1
Gosford-Wyong	133.2	-8.9	8.2	-2.9	5.8	-1.4	67.9	-2.6	56.6	-5.5
<i>Balance of New South Wales</i>	<i>1166.7</i>	<i>42.7</i>	<i>67.9</i>	<i>-8.5</i>	<i>5.5</i>	<i>-0.9</i>	<i>69.6</i>	<i>1.9</i>	<i>60.4</i>	<i>0.9</i>
Hunter	281.0	1.9	15.0	-3.9	5.1	-1.3	69.3	1.8	59.6	-1.2
Newcastle	231.3	-6.4	12.0	-3.9	4.9	-1.3	68.7	0.8	58.5	-3.2
Illawarra and South Eastern	277.1	17.2	13.2	-4.8	4.6	-1.9	68.2	3.0	58.2	1.8
Illawarra	180.0	16.2	10.5	-3.6	5.5	-2.4	67.1	4.5	56.6	3.1
Wollongong	127.9	8.0	7.0	-2.3	5.2	-2.0	68.5	4.5	59.3	1.8
Richmond-Tweed/ Mid-North Coast	220.9	19.1	19.0	-0.4	7.9	-0.9	64.7	2.7	57.1	3.8
Northern/ Far West-North Western/ Central West	249.4	-0.6	13.7	1.6	5.2	0.6	73.5	-0.4	63.9	-0.6
Murray-Murrumbidgee	138.4	5.2	7.1	-0.9	4.9	-0.8	75.0	3.0	66.9	1.2
Victoria	2592.6	78.8	126.9	-8.3	4.7	-0.4	72.9	1.1	65.0	0.6
<i>Melbourne</i>	<i>1904.9</i>	<i>45.1</i>	<i>88.4</i>	<i>-4.0</i>	<i>4.4</i>	<i>-0.3</i>	<i>73.0</i>	<i>0.8</i>	<i>65.4</i>	<i>0.3</i>
Outer Western Melbourne	297.7	8.5	20.7	3.1	6.5	0.8	69.6	0.2	65.3	1.3
North Western Melbourne	133.1	-0.1	7.6	-0.7	5.4	-0.5	69.0	2.0	60.1	-1.4
Inner Melbourne	169.8	3.8	7.7	1.5	4.4	0.7	77.4	-1.6	74.2	1.0
North Eastern Melbourne	233.9	8.1	8.7	-1.6	3.6	-0.8	71.9	0.6	65.4	0.6
Inner Eastern Melbourne	320.8	10.8	12.5	-1.9	3.8	-0.7	74.1	2.4	63.8	0.6
Southern Melbourne	219.7	6.8	6.5	-3.2	2.9	-1.5	76.0	0.1	65.1	0.0
Outer Eastern Melbourne	220.9	8.9	8.3	-0.7	3.6	-0.5	78.4	1.8	68.9	1.3
South Eastern Melbourne	177.7	-1.4	10.4	0.1	5.5	0.1	67.9	-0.6	62.4	-1.5
Mornington Peninsula	131.3	-0.2	6.0	-0.7	4.4	-0.5	74.3	2.1	64.4	-1.5
<i>Balance of Victoria</i>	<i>687.7</i>	<i>33.7</i>	<i>38.4</i>	<i>-4.3</i>	<i>5.3</i>	<i>-0.8</i>	<i>72.6</i>	<i>1.9</i>	<i>63.8</i>	<i>1.5</i>
Barwon-Western District	184.8	6.6	9.6	-1.1	4.9	-0.7	74.3	2.2	63.5	0.7
Central Highlands-Wimmera	97.7	5.5	8.7	-0.2	8.1	-0.6	69.9	1.4	64.5	2.2
Loddon-Mallee	134.8	8.9	8.2	-1.1	5.7	-1.2	72.3	2.4	65.2	2.5
Goulburn-Ovens-Murray	153.3	7.1	4.9	-2.7	3.1	-1.9	74.5	2.5	65.3	0.7
All Gippsland	117.1	5.5	7.2	0.9	5.8	0.4	70.3	0.9	60.5	2.1

(a) The employment rate refers to the proportion of the working age (15-64) population who are employed.

(b) The ABS defines metropolitan as those regions located within the State capital cities. Non-metropolitan is defined as those regions located outside the State capital cities as well as the two Territories.

LABOUR FORCE STATUS BY ABS LABOUR FORCE REGIONS
JUNE QUARTER 2007
Not Seasonally Adjusted

State/Region	Employed		Unemployed		Unemployment rate		Employment Rate (a)		Participation rate	
	'000	Annual change	'000	Annual change	%	Annual change (% pts)	%	Annual change (% pts)	%	Annual change (% pts)
Queensland	2129.8	104.0	76.8	-21.2	3.5	-1.1	75.0	1.6	67.1	0.9
Gold Coast	260.7	21.0	9.0	-1.3	3.4	-0.8	75.1	1.1	67.5	3.4
<i>Brisbane</i>	995.9	42.1	37.1	-3.0	3.6	-0.4	75.8	1.3	68.6	1.0
Brisbane City Inner Ring	264.4	22.5	7.3	-0.3	2.7	-0.4	80.2	4.8	73.6	4.4
Brisbane City Outer Ring	304.1	4.9	10.6	-1.6	3.4	-0.5	75.2	-0.1	66.4	-0.9
South and East Brisbane Balance	201.2	4.7	11.0	1.1	5.2	0.4	72.6	0.3	67.5	0.2
North and West Brisbane Balance	226.1	9.9	8.3	-2.3	3.5	-1.1	74.5	0.3	67.5	0.6
<i>Balance of Queensland</i>	1133.9	61.9	39.7	-18.2	3.4	-1.7	74.4	1.9	65.8	0.9
South and East Moreton	250.1	19.6	8.3	-2.0	3.2	-1.1	75.3	1.3	67.6	3.0
North and West Moreton	182.8	16.3	8.4	-2.4	4.4	-1.7	74.0	3.1	64.8	3.2
Wide Bay-Burnett	110.9	10.0	6.3	-2.1	5.4	-2.3	64.6	4.4	54.8	2.4
Darling Downs-South West	134.9	3.7	2.9	-3.4	2.1	-2.5	75.3	1.0	65.7	-1.6
Mackay-Fitzroy-Central West	195.5	1.8	4.7	-0.8	2.4	-0.4	77.7	1.5	68.8	-1.4
Northern-North West	132.2	-0.3	4.7	-3.8	3.4	-2.6	75.8	-2.1	70.3	-3.9
Far North	127.5	10.8	4.4	-3.8	3.3	-3.2	75.6	4.8	67.5	2.0
South Australia	755.0	8.2	38.6	0.4	4.9	0.0	70.7	-0.6	61.9	0.0
<i>Adelaide</i>	553.8	3.6	31.0	1.8	5.3	0.3	70.3	-0.9	61.7	-0.1
Northern Adelaide	167.3	-1.1	13.5	2.4	7.5	1.3	67.2	-0.5	62.6	-0.2
Western Adelaide	97.2	-0.1	4.9	0.4	4.8	0.4	68.8	-0.5	55.6	-0.5
Eastern Adelaide	117.8	-4.6	4.3	-0.2	3.5	0.0	72.3	-4.2	62.1	-3.1
Southern Adelaide	171.5	9.4	8.4	-0.9	4.7	-0.8	73.3	0.5	64.5	2.3
<i>Balance of South Australia</i>	201.2	4.6	7.5	-1.3	3.6	-0.7	71.7	0.5	62.6	0.2
Northern and Western SA	80.3	3.6	2.5	-1.6	3.0	-2.1	72.2	3.1	63.7	0.8
Southern and Eastern SA	120.9	1.0	5.0	0.3	4.0	0.2	71.4	-1.3	61.9	-0.1
Western Australia	1100.8	29.2	36.5	-1.6	3.2	-0.2	75.5	0.3	67.9	0.1
<i>Perth</i>	814.1	30.8	25.8	-2.5	3.1	-0.4	75.6	1.2	67.7	0.7
Central Metropolitan	77.2	5.1	1.0	-1.0	1.2	-1.4	76.6	1.1	69.0	2.1
East Metropolitan	131.3	2.6	4.3	-0.7	3.2	-0.6	74.3	1.8	64.3	-0.6
North Metropolitan	248.5	4.9	8.1	-1.5	3.1	-0.6	77.5	0.4	69.2	-0.7
South West Metropolitan	171.7	8.9	5.7	0.7	3.2	0.2	76.2	2.5	68.2	2.1
South East Metropolitan	185.5	9.3	6.8	0.0	3.6	-0.2	73.1	0.6	67.2	1.8
<i>Balance of Western Australia</i>	286.7	-1.6	10.6	1.0	3.6	0.3	75.2	-2.2	68.4	-1.8
Lower Western WA	148.0	-1.0	4.7	0.3	3.1	0.2	74.9	-1.4	65.3	-1.9
Remainder-Balance WA	138.7	-0.6	5.9	0.7	4.1	0.5	75.4	-3.2	72.0	-1.7
Tasmania	226.9	1.5	10.8	-3.9	4.5	-1.6	68.8	0.2	60.0	-1.2
Greater Hobart-Southern	114.4	3.3	4.6	-1.7	3.8	-1.5	70.2	2.1	60.7	0.3
<i>Greater Hobart</i>	99.2	2.1	4.1	-0.8	3.9	-0.8	71.1	1.3	61.7	0.2
Northern	63.7	-0.4	2.8	-0.4	4.3	-0.5	68.1	-0.9	59.7	-1.2
Mersey-Lyell	48.7	-1.4	3.4	-1.8	6.5	-2.9	66.6	-2.4	59.0	-4.2
Northern Territory	104.6	2.9	5.3	-0.4	4.8	-0.4	72.3	1.3	71.4	0.0
Australian Capital Territory	188.0	4.1	6.0	-0.1	3.1	-0.1	80.0	1.0	73.2	0.4

(a) The employment rate refers to the proportion of the working age (15-64) population who are employed.

EXPLANATORY NOTES

Introduction

The regional labour market estimates presented in this brochure are three-month averages derived from the Australian Bureau of Statistics (ABS) Monthly Labour Force Survey. These estimates are not adjusted to take account of seasonal and other variations and can exhibit irregular movements. They should therefore be used with caution.

Related information

Users may wish to refer to the DEWR *Small Area Labour Markets, Australia* publication, which is available, free of charge, at <http://www.workplace.gov.au> (in PDF format), or as a printed booklet upon request. This publication contains quarterly estimates of unemployment rates and levels for approximately 1350 Statistical Local Areas.

Next issue

The next issue of *Australian Regional Labour Markets*, for the September quarter 2007, is expected to be released in late October 2007.

Contact details

This brochure was prepared by the Economic and Labour Market Analysis Branch, Department of Employment and Workplace Relations, Canberra. For further information on this brochure or related statistics, contact Marjorie Rego in the Labour Market Analysis Section on (02) 6121 6198 or email marjorie.rego@dewr.gov.au.

More detailed monthly national, State/Territory and regional labour force statistics are available from the ABS. For further information on ABS labour force statistics, go to the 'Labour' theme page at the ABS website (www.abs.gov.au), or contact Craig Blair on (02) 6252 6565.