



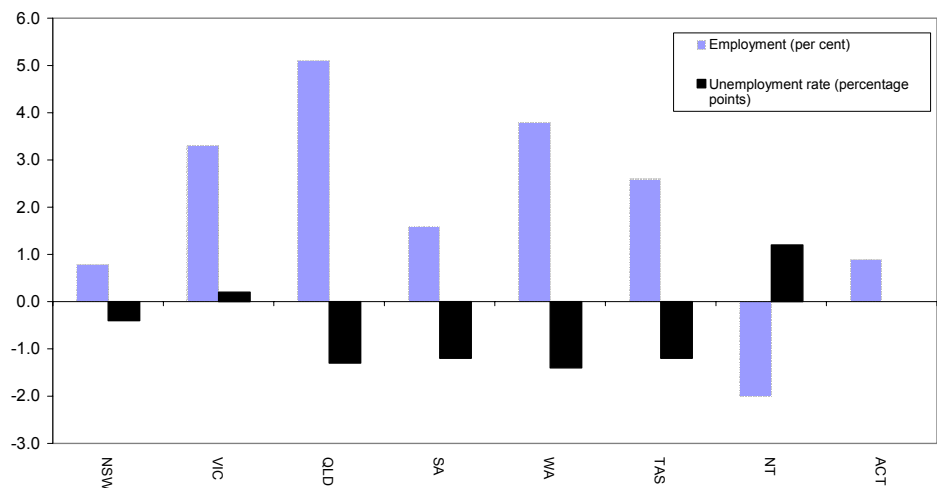
AUSTRALIAN REGIONAL LABOUR MARKETS DECEMBER QUARTER 2004

State/Territory labour market developments

MAIN FINDINGS

Over the year to the December quarter 2004, employment rose in all States and the ACT. The largest increase (in percentage terms) was recorded in Queensland (up by 5.1 per cent), followed by Western Australia (up by 3.8 per cent) and Victoria (up by 3.3 per cent). Over the same period, the unemployment rate fell in all States except Victoria (where it rose by 0.2 percentage points). The unemployment rate remained unchanged in the ACT but rose in the Northern Territory (up by 1.2 percentage points).

CHANGE IN EMPLOYMENT AND THE UNEMPLOYMENT RATE, DECEMBER QUARTER 2003 TO DECEMBER QUARTER 2004



Developments at the ABS Labour Market Region Level

Employment increased in almost 80 per cent of regions over the year to the December quarter 2004 while around two-thirds of regions recorded a reduction in their unemployment rate. A number of regions have recorded strong employment growth as well as a significant reduction in their unemployment rate over the last 12 months. In particular:

- Mornington Peninsula in Victoria recorded a 13.6 per cent increase in employment while the unemployment rate fell by 0.8 percentage points to 4.5 per cent;
- employment in Sydney's Eastern Suburbs rose by 12.3 per cent while the unemployment rate fell by 1.6 percentage points to 2.0 per cent; and
- North and West Moreton in Queensland recorded an 11.6 per cent increase in employment while the unemployment rate fell by 1.8 percentage points to 4.8 per cent.

**LABOUR FORCE STATUS BY ABS LABOUR FORCE REGIONS
DECEMBER QUARTER 2004
Not Seasonally Adjusted**

State/Region	Employed		Unemployed		Unemployment rate		Employment rate		Participation rate	
	'000	Annual change	'000	Annual change	Annual change %	% pts	Annual change %	% pts	Annual change %	% pts
AUSTRALIA	9844.1	254.2	512.8	-48.7	5.0	-0.6	60.7	0.6	63.9	0.3
<i>Metropolitan Australia*</i>	6243.6	201.1	304.8	-37.1	4.7	-0.7	62.0	1.1	65.0	0.7
<i>Non-metropolitan Australia*</i>	3600.5	53.2	208.1	-11.5	5.5	-0.4	58.7	-0.1	62.0	-0.3
New South Wales	3205.5	25.6	167.9	-11.7	5.0	-0.4	59.1	-0.2	62.2	-0.4
<i>Sydney</i>	2126.1	42.0	92.9	-11.6	4.2	-0.6	62.0	0.6	64.7	0.2
Inner Sydney and Inner Western Sydney	269.2	12.5	10.5	-2.4	3.8	-1.0	66.3	2.4	68.9	1.8
Inner Sydney	177.9	2.5	8.4	1.1	4.5	0.5	67.1	0.3	70.2	0.7
Eastern Suburbs	136.4	14.9	2.7	-1.8	2.0	-1.6	64.4	6.6	65.7	5.7
St George-Sutherland	246.2	12.7	8.3	-0.2	3.2	-0.2	67.5	2.8	69.8	2.7
Canterbury-Bankstown	127.8	-2.2	8.9	-2.2	6.5	-1.3	50.5	-1.4	54.0	-2.3
Fairfield-Liverpool/ Outer South Western Sydney	278.4	9.2	15.8	-3.2	5.4	-1.2	60.6	1.3	64.1	0.5
Fairfield-Liverpool	159.0	-0.1	10.6	0.5	6.2	0.3	57.4	-0.7	61.3	-0.6
Central Western Sydney	128.3	-12.3	5.8	-0.5	4.3	0.0	52.3	-5.6	54.6	-5.9
North Western Sydney	281.8	-8.9	13.8	-4.2	4.7	-1.2	61.4	-2.7	64.4	-3.6
Lower Northern Sydney	170.7	8.6	5.3	-2.1	3.0	-1.3	67.0	2.7	69.1	1.9
Central Northern Sydney	218.4	1.9	7.3	1.7	3.2	0.7	64.8	-0.2	67.0	0.3
Northern Beaches	129.5	-5.2	3.8	0.7	2.9	0.6	66.1	-3.3	68.1	-3.0
Gosford-Wyong	139.4	10.7	10.6	2.5	7.1	1.1	57.3	3.8	61.7	4.7
<i>Balance of New South Wales</i>	1079.4	-16.4	74.9	-0.2	6.5	0.1	54.2	-1.5	57.9	-1.5
Hunter	272.8	9.1	18.4	-0.4	6.3	-0.3	56.4	1.3	60.2	1.1
Newcastle	226.2	1.2	15.7	0.0	6.5	0.0	55.8	-0.3	59.7	-0.4
Illawarra and South Eastern	263.6	8.1	17.9	-3.5	6.4	-1.4	54.1	1.0	57.7	0.3
Illawarra	171.9	6.8	14.0	-1.8	7.5	-1.2	52.3	1.5	56.5	0.9
Wollongong	122.0	5.9	9.9	-2.3	7.5	-2.0	55.0	2.1	59.5	0.9
Richmond-Tweed/ Mid-North Coast	183.3	-29.7	19.5	3.4	9.6	2.6	44.8	-7.9	49.6	-7.1
Northern/ Far West-North Western/ Central West	226.4	-0.8	13.0	0.0	5.4	0.0	56.5	-0.8	59.8	-0.8
Murray-Murrumbidgee	133.3	-3.2	6.1	0.3	4.4	0.3	63.0	-2.2	65.9	-2.1
Victoria	2454.8	79.2	143.3	10.5	5.5	0.2	60.8	1.0	64.3	1.2
<i>Melbourne</i>	1826.6	73.9	95.3	-2.1	5.0	-0.3	62.1	1.6	65.3	1.5
Outer Western Melbourne	293.5	19.1	19.8	-2.0	6.3	-1.0	62.4	3.1	66.6	2.6
North Western Melbourne	128.5	1.6	11.5	3.6	8.2	2.4	56.8	-0.2	61.9	1.4
Inner Melbourne	149.4	-5.5	5.4	-2.3	3.5	-1.3	64.5	-3.4	66.9	-4.4
North Eastern Melbourne	214.8	6.4	15.0	2.6	6.5	0.9	60.0	0.9	64.2	1.6
Inner Eastern Melbourne	310.6	15.5	13.5	-0.9	4.2	-0.5	61.6	2.2	64.2	2.0
Southern Melbourne	207.0	6.6	7.0	-1.5	3.2	-0.8	61.7	1.1	63.7	0.6
Outer Eastern Melbourne	217.5	3.1	8.1	0.8	3.6	0.3	67.8	-0.1	70.3	0.1
South Eastern Melbourne	180.8	12.3	9.1	-2.2	4.8	-1.5	62.2	3.2	65.3	2.4
Mornington Peninsula	124.5	14.9	5.9	-0.3	4.5	-0.8	60.7	6.4	63.6	6.2
<i>Balance of Victoria</i>	628.2	5.3	48.0	12.6	7.1	1.7	57.3	-0.4	61.6	0.7
Barwon-Western District	169.0	12.1	12.3	4.1	6.8	1.8	57.3	3.3	61.4	4.6
Central Highlands-Wimmera	84.4	-8.7	7.9	1.3	8.5	2.0	53.1	-6.4	58.0	-5.6
Loddon-Mallee	115.2	-5.7	11.4	3.9	9.0	3.2	54.5	-3.6	59.8	-1.8
Goulburn-Ovens-Murray	143.6	3.5	8.0	1.6	5.3	0.9	61.5	0.5	64.9	1.1
All Gippsland	116.0	4.2	8.4	1.6	6.7	1.0	58.6	1.2	62.8	2.0

* The ABS defines metropolitan as those regions located within the State capital cities. Non-metropolitan is defined as those regions located outside the State capital cities as well as the two Territories.

**LABOUR FORCE STATUS BY ABS LABOUR FORCE REGIONS
DECEMBER QUARTER 2004
Not Seasonally Adjusted**

State/Region	Employed		Unemployed		Unemployment rate		Employment Rate		Participation rate	
	'000	Annual change	'000	Annual change	Annual change %	% pts	Annual change %	% pts	Annual change %	% pts
Queensland	1950.9	95.2	90.9	-23.2	4.5	-1.3	62.8	1.5	65.7	0.7
Gold Coast	227.9	9.4	11.0	-3.8	4.6	-1.7	60.3	0.9	63.2	-0.2
<i>Brisbane</i>	<i>915.3</i>	<i>42.1</i>	<i>43.4</i>	<i>-8.0</i>	<i>4.5</i>	<i>-1.0</i>	<i>64.4</i>	<i>1.4</i>	<i>67.4</i>	<i>0.7</i>
Brisbane City Inner Ring	242.0	20.0	11.4	1.9	4.5	0.4	69.6	4.2	72.9	4.7
Brisbane City Outer Ring	284.5	12.0	12.2	-2.8	4.1	-1.1	63.3	1.1	66.0	0.4
South and East Brisbane Balance	186.7	2.3	10.6	-4.4	5.4	-2.2	62.8	-0.8	66.4	-2.4
North and West Brisbane Balance	202.1	7.7	9.2	-2.7	4.4	-1.4	61.6	0.8	64.4	-0.1
<i>Balance of Queensland</i>	<i>1035.7</i>	<i>53.2</i>	<i>47.5</i>	<i>-15.2</i>	<i>4.4</i>	<i>-1.6</i>	<i>61.5</i>	<i>1.6</i>	<i>64.3</i>	<i>0.6</i>
South and East Moreton	218.2	4.5	9.6	-3.6	4.2	-1.6	60.3	-0.4	63.0	-1.5
North and West Moreton	165.5	17.2	8.4	-2.2	4.8	-1.8	59.3	4.7	62.4	3.9
Wide Bay-Burnett	99.6	10.4	6.3	-3.1	6.0	-3.6	49.4	4.0	52.5	2.3
Darling Downs-South West	125.4	1.6	3.0	-3.7	2.3	-2.8	63.4	-0.8	64.9	-2.7
Mackay-Fitzroy-Central West	181.9	8.0	8.6	-2.3	4.5	-1.4	66.2	1.3	69.3	0.4
Northern-North West	124.3	3.9	7.1	0.7	5.4	0.4	67.5	0.4	71.4	0.7
Far North	120.8	7.7	4.5	-1.1	3.6	-1.1	65.5	2.6	67.9	2.0
South Australia	729.5	11.6	39.4	-9.0	5.1	-1.2	58.3	0.4	61.4	-0.3
<i>Adelaide</i>	<i>536.4</i>	<i>12.3</i>	<i>32.4</i>	<i>-5.8</i>	<i>5.7</i>	<i>-1.1</i>	<i>57.9</i>	<i>0.9</i>	<i>61.4</i>	<i>0.2</i>
Northern Adelaide	164.7	5.9	13.1	-2.4	7.4	-1.5	58.4	1.6	63.1	0.7
Western Adelaide	97.5	5.6	6.1	-2.0	5.9	-2.3	54.2	2.7	57.6	1.6
Eastern Adelaide	113.5	2.3	4.0	-1.6	3.4	-1.4	59.0	0.7	61.1	-0.1
Southern Adelaide	160.8	-1.5	9.2	0.3	5.4	0.2	58.9	-1.1	62.3	-1.0
<i>Balance of South Australia</i>	<i>193.0</i>	<i>-0.7</i>	<i>7.1</i>	<i>-3.2</i>	<i>3.5</i>	<i>-1.5</i>	<i>59.3</i>	<i>-0.7</i>	<i>61.5</i>	<i>-1.8</i>
Northern and Western SA	71.8	3.4	3.7	-2.3	4.8	-3.2	56.6	2.2	59.5	0.4
Southern and Eastern SA	121.2	-4.1	3.4	-0.9	2.7	-0.6	61.0	-2.6	62.8	-3.1
Western Australia	1012.9	37.5	45.4	-13.9	4.3	-1.4	63.4	1.1	66.3	0.1
<i>Perth</i>	<i>748.0</i>	<i>29.6</i>	<i>35.4</i>	<i>-8.8</i>	<i>4.5</i>	<i>-1.3</i>	<i>63.2</i>	<i>1.3</i>	<i>66.2</i>	<i>0.4</i>
Central Metropolitan	67.2	1.2	2.0	-2.1	2.9	-3.0	62.4	0.0	64.3	-2.1
East Metropolitan	130.6	8.5	5.3	-2.2	3.9	-1.9	65.0	3.0	67.7	1.8
North Metropolitan	227.5	8.8	12.7	-0.1	5.3	-0.3	64.2	1.2	67.8	1.1
South West Metropolitan	151.1	6.4	6.1	-2.8	3.9	-1.9	61.1	1.3	63.5	0.1
South East Metropolitan	171.6	4.8	9.4	-1.6	5.2	-1.0	62.8	0.5	66.2	-0.2
<i>Balance of Western Australia</i>	<i>265.0</i>	<i>7.9</i>	<i>9.9</i>	<i>-5.1</i>	<i>3.6</i>	<i>-1.9</i>	<i>64.0</i>	<i>0.6</i>	<i>66.4</i>	<i>-0.7</i>
Lower Western WA	131.2	3.6	5.6	-3.6	4.1	-2.6	59.0	0.3	61.5	-1.4
Remainder-Balance WA	133.7	4.3	4.3	-1.5	3.1	-1.2	69.9	0.9	72.1	0.0
Tasmania	215.9	5.5	13.2	-2.5	5.8	-1.2	55.7	0.6	59.1	-0.1
Greater Hobart-Southern	107.2	2.5	6.7	-0.4	5.9	-0.4	55.8	0.5	59.3	0.3
<i>Greater Hobart</i>	<i>91.3</i>	<i>1.2</i>	<i>5.4</i>	<i>-0.9</i>	<i>5.6</i>	<i>-0.9</i>	<i>55.7</i>	<i>-0.1</i>	<i>58.9</i>	<i>-0.6</i>
Northern	63.0	2.5	3.5	-2.0	5.2	-3.1	57.7	1.5	60.9	-0.4
Mersey-Lyell	45.7	0.4	3.1	-0.1	6.3	-0.3	52.9	-0.3	56.5	-0.5
Northern Territory	95.5	-1.9	6.1	1.2	6.0	1.2	66.0	-2.0	70.2	-1.3
Australian Capital Territory	179.1	1.6	6.7	0.1	3.6	0.0	69.6	0.2	72.2	0.2

EXPLANATORY NOTES

- Introduction** The regional labour market estimates presented in this brochure are three monthly averages derived from the Australian Bureau of Statistics (ABS) Monthly Labour Force Survey. These estimates are not adjusted to take account of seasonal and other variations and can exhibit irregular movements. They should therefore be used with caution.
- Changes in this issue** Regional employment rates have been included in this edition of *Australian Regional Labour Markets* and will now feature on an ongoing basis. The employment rate measures employed persons as a proportion of the civilian population aged 15 years and over.
- Related information** Users may wish to refer to the DEWR *Small Area Labour Markets, Australia* publication which is available at <http://www.workplace.gov.au> or free of charge upon request. This publication contains quarterly estimates of unemployment rates and levels for approximately 1,350 Statistical Local Areas.
- Next issue** The next issue of *Australian Regional Labour Markets*, for the March quarter 2005, is expected to be released in late April 2005.
- Contact details** This brochure was prepared by the Economic and Labour Market Analysis Branch, Department of Employment and Workplace Relations, Canberra. For further information on this brochure or related statistics, contact Julianne Best in the Labour Market Analysis Section on (02) 6121 5861 or email julianne.best@dewr.gov.au.
- More detailed monthly National, State and regional labour force statistics are available from the ABS. For further information on ABS labour force statistics, contact Peter Bradbury on (02) 6252 6565.
-