

WESTERN AUSTRALIAN POPULATION MOVEMENTS

Introduction

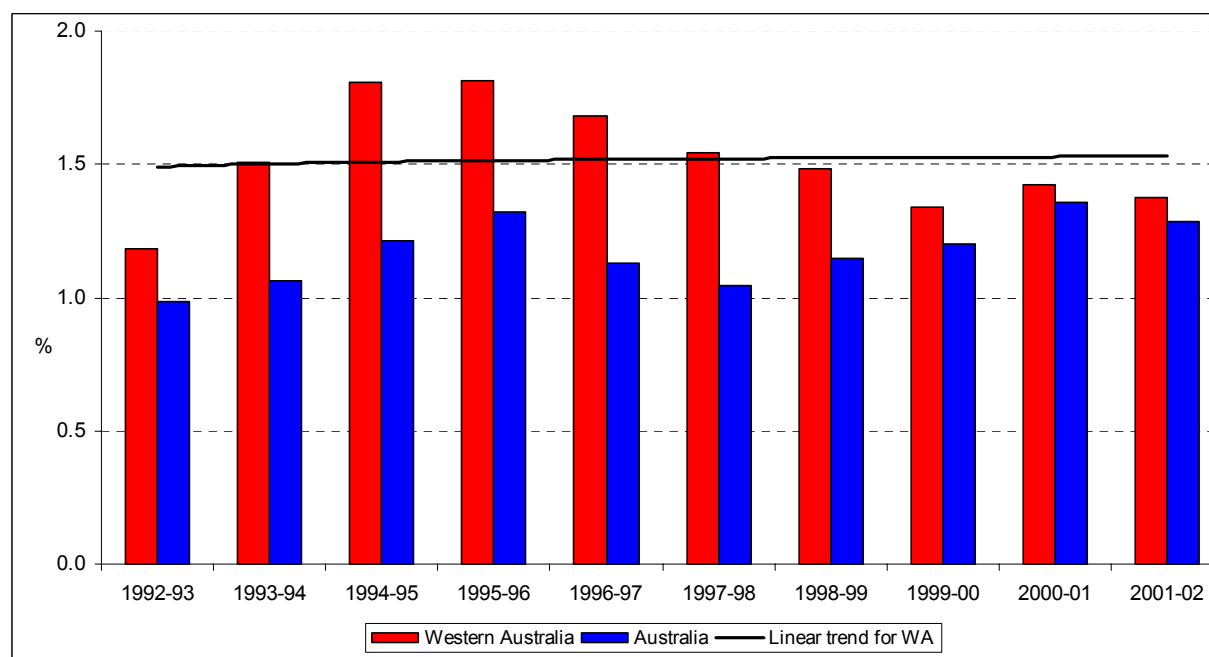
This report is based on the Australian Bureau of Statistics (ABS) publications *Australian Demographic Statistics (Catalogue No. 3101.0)*, *Regional Population Growth (Catalogue No. 3218.0)* and *Population Projections Australia 2002-2101 (Catalogue No. 3222.0)*. It provides an overview of population changes in Western Australia over the last decade and the major components of population growth. The report also identifies population growth over the past year and the average level of growth over the last five years for Local Government Areas.

Overview

Nationally, population growth has two components, namely natural increase (the difference between births and deaths) and net overseas migration (based on net permanent and long-term overseas movements). For the States and Territories, population growth is also influenced by net interstate migration.

Over the last decade, the average rate of population growth in WA has been 1.5 per cent. However, as Figure 1 illustrates, population growth over the decade has fluctuated from a high of 1.8 per cent in 1994-95, 1995-96 and 1996-97 to a low of 1.3 per cent in 1999-2000. The increase in 2001-02 was 1.4 per cent.

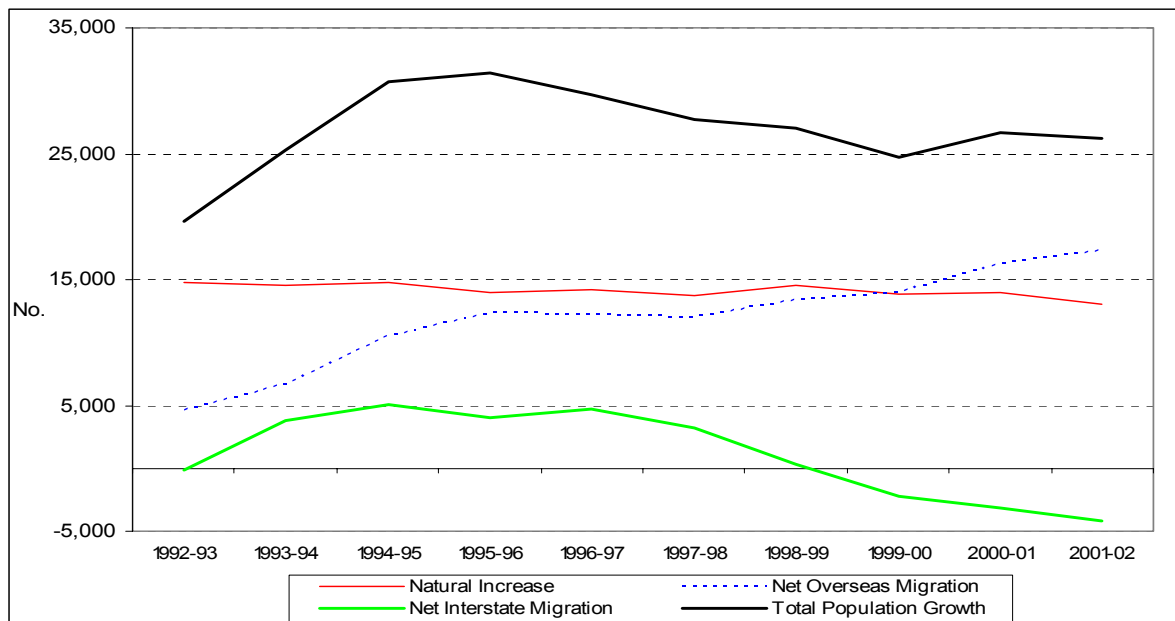
Figure 1 Population Growth, WA and Australia



Source: Australian Bureau of Statistics (ABS), *Australian Demographic Statistics (Catalogue No. 3101.0)*

Population movements are made up of natural increases, net migration from overseas and net migration from other states. Figure 2 illustrates how the level of natural increase in WA has remained relatively stable over the last decade at 13,000-14,800 per annum (13,000 in 2001-02). The level of overseas migration has, however, fluctuated widely over the last 10 years from a low of 4,600 in 1992-93 to 17,300 in 2001-02. Interstate migration is the other contributor to population growth in WA. The net movement from interstate has varied from an increase of 5,100 in 1994-95 to a decrease of 4,174 persons in 2001-02.

Figure 2 Components of Population Growth, WA



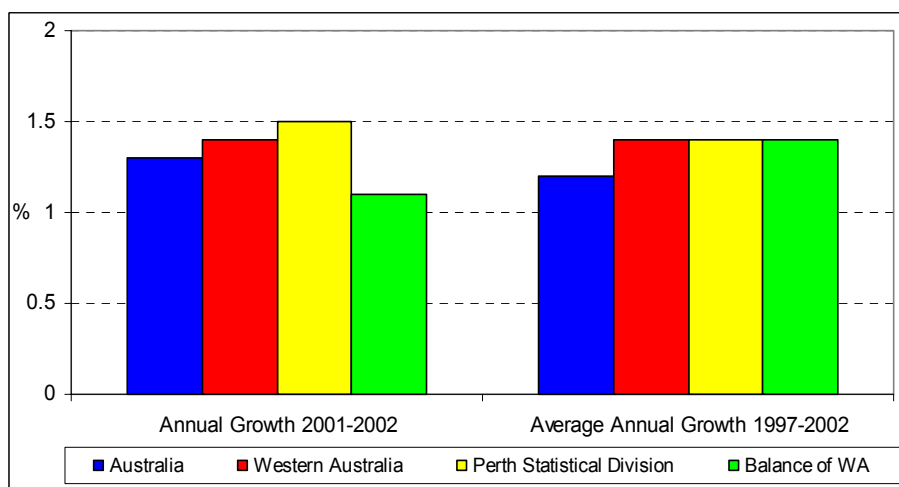
Source: Australian Bureau of Statistics (ABS), Australian Demographic Statistics (Catalogue No. 3101.0)

As at June 2002 Australia's estimated resident population was 19,663,000 people, an increase of 249,500 (1.3%) since June 2001. Between the five years from 1997-98 and 2001-02, the annual rate of population increase nationally averaged 1.2 per cent.

During 2001-02, population growth in Queensland was 2.2 per cent, the highest of all of the States and Territories, followed by Victoria and WA each with growth of 1.4 per cent. In the five years to June 2002, Queensland also recorded the highest rate of population growth with 1.8 per cent average annual growth, followed by WA with a growth rate of 1.4 per cent per annum.

Figure 3 depicts the annual growth rate from June 2001 to June 2002 for Australia, WA, the Perth Statistical Division and the Balance of WA (all of WA outside Perth). In addition, the average annual growth for these areas for the five year period 1997-2002 is included.

Figure 3 Population Change, Australia, WA, Perth Statistical Division and Balance of WA



Source: Australian Bureau of Statistics (ABS), Regional Population Growth (Catalogue No. 3218.0)

Western Australia

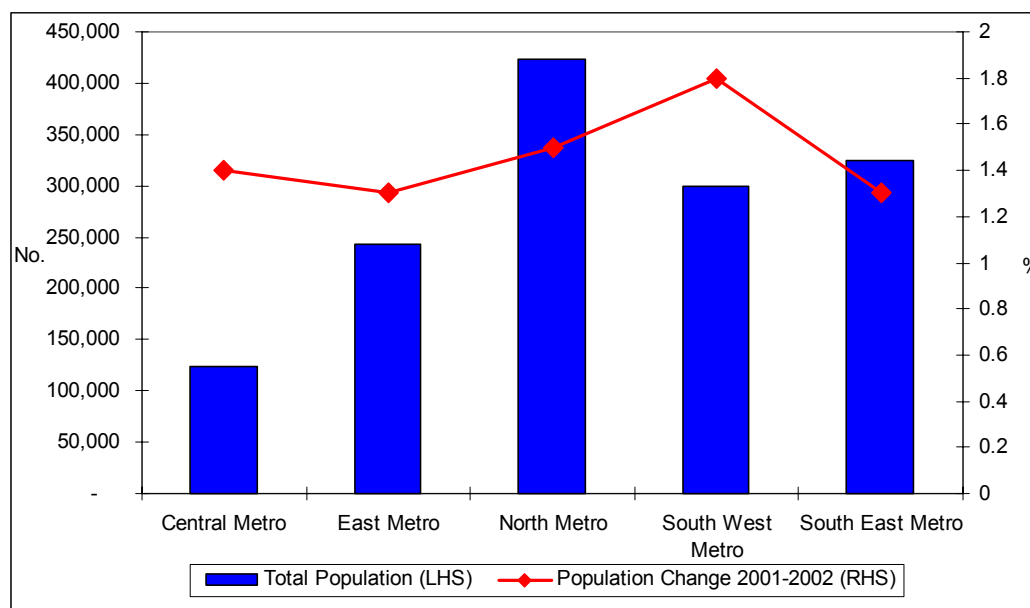
The estimated resident population for WA as at June 2002 was 1,927,300 which equates to an increase of 26,200 persons or 1.4 per cent over the previous twelve months. This is the same as the average population growth rate during the past five year period.

In June 2002 there were an estimated 1,413,700 people resident in the Perth Statistical Division. This represents 73.3 per cent of the total State population. The number of people residing in Perth grew by 1.5 per cent (an increase of 20,600 persons) in the twelve months to June 2002, which accounted for 78.9 per cent of WA's total population growth. Over the five years to June 2002, Perth's average annual population growth rate was 1.4 per cent.

The Balance of WA grew by 1.1 per cent or 5,500 persons over the year to June 2002, to a total of 513,700. This growth rate was less than for the five years to June 2002 when an average annual growth of 1.4 per cent was recorded.

The Perth Statistical Division (SD) consists of five Statistical Subdivisions (SSDs) - Central Metropolitan, East Metropolitan, North Metropolitan, South West Metropolitan and South East Metropolitan. Population growth in Perth has not been evenly spread across all SSDs in recent times. Figure 4 depicts how the growth rates in the Perth SD varied between 1.3 per cent in the East and South East Metropolitan SSDs and 1.8 per cent in the South West Metropolitan SSD during 2001-02.

Figure 4 Estimated Resident Population and Population Change, Perth Statistical Division



Source: Australian Bureau of Statistics (ABS), *Regional Population Growth* (Catalogue No. 3218.0)

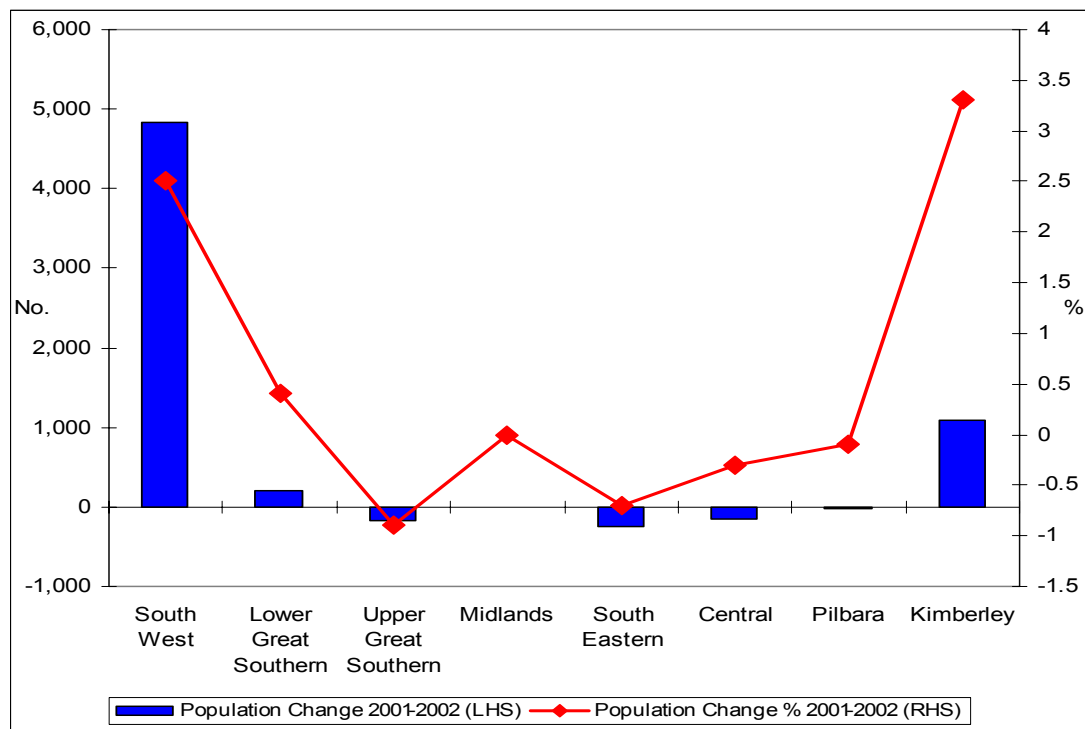
These five SSDs can be further subdivided into Local Government Areas (LGAs) and Statistical Local Areas (SLAs). In Perth, the LGAs which experienced the greatest growth in the year to June 2002 were generally situated in Perth's developing outer suburbs. The three LGAs with the greatest growth accounted for 42.8 per cent of all growth in the Perth SD.

The City of Wanneroo to the north of the city experienced the largest population increase of any LGA in WA with an increase of 4,300 persons (5.1%). The City of Swan, in the north-east, had the second highest population increase with a gain of 2,300 persons (2.7%). In the south-west of Perth,

the Cities of Rockingham and Cockburn with increases of 2,200 (3.0%) and 1,900 (2.8%) respectively had the third and fifth largest population rises among WA's LGAs while the City of Mandurah in the South-West SD had the fourth largest population increase, gaining 2,000 persons (4.0%)

LGAs located in the established areas closer to the centre of Perth generally had considerably less growth numerically than those in the outer areas. The City of Perth was the only exception growing by 11.8 per cent which is actually the highest growth rate of any WA LGA, although it only represented an increase of 900 persons. There are now 8,700 persons residing in the City of Perth with the growth a result of urban consolidation, sub division and redevelopment.

Figure 5 Population Change by Non-Metro Statistical Division (Other than Perth SD)



Source: Australian Bureau of Statistics (ABS), *Regional Population Growth* (Catalogue No. 3218.0)

The South West SD is the second most populous Statistical Division in the State and it contains some of the LGAs with the highest growth rates in the State. Overall the South West SD increased by 2.5 per cent (4,800) over the last year and 2.9 per cent on average over the last five years.

The Shire of Capel, which is on the outskirts of Bunbury was one of the fastest growing LGAs in the country, recording a population increase of 7.4 per cent (500 persons) for the year to June 2002 and an average annual growth for the past five years of 4.4 per cent. The Shire of Busselton grew by 5.5 per cent (1,300 persons) last year and had an average annual growth rate for the last five years of 5.0 per cent. The Shire of Dardanup, which is also on the outskirts of Bunbury recorded a population increase of 300 persons (3.4%) for the year to June 2002 but had an average annual growth for the past five years of 6.0 per cent. However as mentioned above, the largest growth in term of numbers in the South West SD was recorded by the City of Mandurah (2,000 persons) which had a growth rate last year of 4.0 per cent and an average five yearly growth rate of 3.7 per cent.

Proportionally, population growth in the Kimberley SD, was greater than in any other Statistical Division in WA. In 2001-2002, the population of the Kimberley grew by 1,100 persons or 3.3 per

cent and on average by 4.7 per cent over the last five years. All four LGAs that make up the region recorded high levels of growth relative to their population sizes. The population of the Shire of Broome increased by 500 persons or 3.6 per cent over the last year while the Shire of Halls Creek had an increased of 4.4 per cent over the last year (200 persons).

The Lower Great Southern SD was the only other Statistical Division outside the metropolitan area to record a population increase last year growing by 0.5 per cent (200 persons) and by an average of 1.1 per cent over the last five years.

While the Midlands SD population did not change over the last year, the other non-metropolitan Statistical Divisions in WA recorded decreases ranging from 0.9 per cent (200 persons) for the Upper Great Southern to 0.1 per cent (20 persons) for the Pilbara SD.

During 2001-02, almost all Western Australian LGAs to experience a decrease in population were located in the balance of WA; that is outside the capital city SD of Perth. The largest decline occurred in Geraldton (C) (down 400 persons or 2.0%) in the Central SD, while decreases were also recorded in the mining-related LGAs of Kalgoorlie/Boulder (C) and Coolgardie (S) (down 200 and 100 persons respectively) in the South Eastern SD, Ashburton (S) (down 100 people) in the Pilbara SD, and Manjimup (S) (down 100 persons) in the South West SD.

The fastest decline last year occurred in Kent (S) (5.6% or 36 persons), Carnamah (4.7% or 38 persons), Trayning (4.1% or 16 persons), Bruce Rock (S) (3.8% or 40 persons), Dalwallinu (S) (3.7% or 70 persons) and Yilgarn (S) (2.7% or 50 persons).

A population increase was recorded in 73 of the 142 LGAs in Western Australia. Of the other LGAs, 8 had no change in population and the other 61 recorded a decline in population.

Population Projections

By studying current trends and making certain assumptions about fertility and mortality rates and net overseas migration, the ABS has produced a series of projections of growth and change in the population. Based on combinations of high, low and median estimates, they have produced three possible scenarios for population growth.

Australia's resident population (ERP) at June 2002 of 19.7 million is projected to grow to between 23.0 million and 31.4 million in 2051, and to between 18.9 million and 37.7 million in 2101.

Throughout the 1990s and early 2000s, Australia's annual population growth rate has been in excess of 1 per cent. In part this is due to natural increase, or an excess of births over deaths. In 2001-02, there was an excess of births over deaths of 115,900 persons. Projections indicate that deaths will exceed births in the future, leading to a state of natural decrease. Growth will eventually become negative some time between 2040 and 2070.

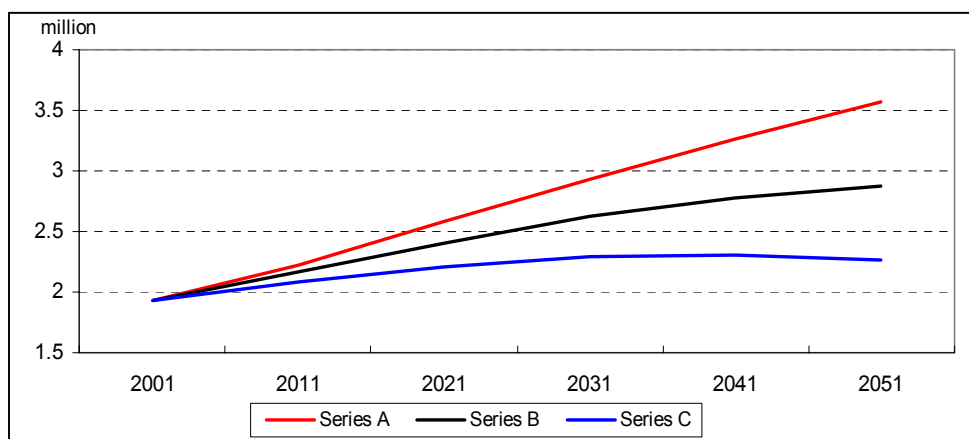
The ageing of Australia's population, which is already evident in the current age structure, will continue. This is the inevitable result of sustained low fertility combined with increasing life expectancy at birth.

The two factors which have the greatest impact on future national population growth are fertility and overseas migration. The level of fertility affects not only population size and growth, but also the age distribution of the population. Net overseas migration affects the size of the population more than its age structure.

Interstate migration is probably the most difficult component to measure in Australia's population estimation process. The movement of people between the states and territories of Australia is unrestricted and depends on many factors such as varying economic opportunities, overseas immigration and settlement patterns, and lifestyle choices of their populations.

The median scenario projects population increase over the next 50 years in all states and territories, except Tasmania and South Australia. Between June 2002 and June 2051, the population of the Queensland will increase by 73 per cent, the Northern Territory by 55 per cent and Western Australia by 49 per cent, well above the growth projected for Australia (34%). The distribution of Australia's population is therefore projected to be noticeably different in 50 years' time. New South Wales is projected to remain the most populous state in Australia, while Victoria will be replaced by Queensland as the second most populous state. Western Australia will increase its share of Australia's population, while South Australia's and Tasmania's shares will decline under this series.

Figure 6 Projected Population, Western Australia



Source: Australian Bureau of Statistics (ABS), *Population Projections Australia 2002-2101* (Catalogue No. 3222.0)

Under the median scenario WA's population was likely to increase from 1.9 million in June 2002 to up to 2.9 million by 2051 with Perth's population growing slightly faster than the rest of the state.

Other

Appendix 1 has population data for each Statistical Division, Statistical Sub Division and Statistical Local Area in Western Australia. Statistical Local Areas are the same as Local Government Areas except for Perth, Stirling, Wanneroo, Joondalup, Fremantle, Albany, Kalgoorlie-Boulder, Capel, Dardanup, Harvey and Greenough where the LGA has been split into two or more SLAs.

APPENDIX 1 ESTIMATED RESIDENT POPULATION

STATISTICAL DIVISION (SD)	Statistical Subdivision (SSD)	Statistical Local Area (SLA)	Population 2002p No.	Change		
				1997/02p % (a)	2001/02p No. %	
PERTH SD	Central Metropolitan SSD	Cambridge (T)	24,508	0.3	169	0.7
		Claremont (T)	9,168	-0.1	23	0.3
		Cottesloe (T)	7,486	-	75	1.0
		Mosman Park (T)	8,437	1.2	98	1.2
		Nedlands (C)	21,672	0.5	114	0.5
		Peppermint Grove (S)	1,648	-1.2	-1	-0.1
		Perth (C) Inner	900	14.7	123	15.8
		Perth (C) Remainder	7,833	7.6	802	11.4
		Subiaco (C)	15,687	0.6	82	0.5
		Vincent (T)	26,256	0.1	163	0.6
	Total	123,595	0.8	1,648	1.4	
	East Metropolitan SSD	Bassendean (T)	14,175	0.3	152	1.1
		Bayswater (C)	56,733	0.5	-91	-2.0
		Kalamunda (S)	49,101	0.2	469	1.0
		Mundaring (S)	35,508	0.9	174	0.5
		Swan (S)	87,425	3.2	2,331	2.7
	Total	242,942	1.4	3,035	1.3	
	North Metropolitan SSD	Joondalup (C) - North	49,304	4.2	1,536	3.2
		Joondalup (C) - South	107,660	-0.5	-628	-0.6
		Stirling (C) Central	99,267	0.4	515	0.5
		Stirling (C) Coastal	62,562	0.9	691	1.1
		Stirling (C) South-Eastern	16,133	-0.6	46	0.3
		Wanneroo (C) North-East	21,974	6.3	1,551	7.6
		Wanneroo (C) North-West	28,710	7.5	2,223	8.4
		Wanneroo (C) South	37,717	2.7	495	1.3
	Total	423,327	1.5	6,429	1.5	
	South West Metropolitan SSD	Cockburn (C)	71,524	3.0	1,909	2.8
		East Fremantle (T)	6,799	1.0	27	0.4
		Fremantle (C) Inner	796	1.8	-2	-0.3
		Fremantle (C) Remainder	25,330	0.8	418	1.7
		Kwinana (T)	22,118	1.5	361	1.7
		Melville (C)	97,380	0.6	291	0.3
		Rockingham (C)	76,262	3.3	2,244	3.0
		Total	299,939	1.9	5,248	1.8
	South East Metropolitan SSD	Armadale (C)	52,288	0.1	15	-
		Belmont (C)	30,307	1.9	456	1.5
		Canning (C)	78,162	1.4	1,114	1.4
		Gosnells (C)	85,219	1.8	1,745	2.1
		Serpentine-Jarrahdale (S)	11,912	2.6	208	1.8
		South Perth (C)	37,959	0.6	438	1.2
		Victoria Park (T)	28,001	0.7	313	1.1
		Total	323,848	1.2	4,289	1.3
TOTAL			1,413,651	1.4	20,649	1.5
SOUTH WEST SD	Mandurah SSD	Mandurah (C)	50,845	3.7	1,968	4.0
		Murray (S)	11,171	2.8	296	2.7
		Total	62,016	3.5	2,264	3.8
	Bunbury SSD	Bunbury (C)	30,673	2.0	180	0.6
		Capel (S) – Pt A	3,160	7.1	301	10.5
		Dardanup (S) - Pt A	6,674	7.4	256	4.0
		Harvey (S) – Pt A	10,303	3.7	65	0.6
		Total	50,810	3.3	802	1.6

STATISTICAL DIVISION (SD)	Statistical Subdivision (SSD)	Statistical Local Area (SLA)	Population	Change	
			2002p No.	1997/02p % (a)	2001/02p No. %
	Preston SSD	Boddington (S)	1,412	-2.3	-28 -1.9
		Capel (S) – Pt B	4,476	2.7	228 5.4
		Collie (S)	9,105	-	33 0.4
		Dardanup (S) – Pt B	2,587	2.9	50 2.0
		Donnybrook-Balingup (S)	4,700	1.8	9 0.2
		Harvey (S) – Pt B	8,164	1.7	-50 -0.6
		Waroona (S)	3,514	1.2	-10 -0.3
		Total	33,958	1.2	232 0.7
	Vasse SSD	Augusta-Margaret River (S)	10,529	4.2	342 3.4
		Busselton (S)	24,368	5.0	1269 5.5
		Total	34,897	4.8	1,611 4.8
	Blackwood SSD	Boyup Brook (S)	1,629	-1.1	-13 -0.8
		Bridgetown-Greenbushes (S)	4,236	0.8	48 1.1
		Manjimup (S)	10,204	-0.2	-105 -1.0
		Nannup (S)	1,218	1.0	- -
		Total	17,287	-	-70 -0.4
TOTAL	SOUTH WEST SD		198,968	2.9	4,839 2.5
LOWER GREAT SOUTHERN SD	Pallinup SSD	Broomehill (S)	521	0.7	-2 -0.4
		Gnowangerup (S)	1,539	-2.8	-40 -2.5
		Jerramungup (S)	1,228	-1.3	-16 -1.3
		Katanning (S)	4,445	-1.0	-38 -0.8
		Kent (S)	602	-4.6	-36 -5.6
		Kojonup (S)	2,254	-1.2	-44 -1.9
		Tambellup (S)	722	-0.4	-10 -1.4
		Woodanilling (S)	390	0.9	-4 -1.0
		Total	11,701	-1.4	-190 -1.6
	King SSD	Albany (C) – Central	16,528	1.2	-141 -0.8
		Albany (C) - Balance	14,951	2.4	384 2.6
		Cranbrook (S)	1,061	-1.1	-7 -0.7
		Denmark (S)	4,895	3.9	180 3.8
		Plantagenet (S)	4,658	1.3	-30 -0.6
		Total	42,093	1.9	386 0.9
TOTAL	LOWER GREAT SOUTHERN SD		51,794	1.1	196 0.4
UPPER GREAT SOUTHERN SD	Hotham SSD	Brookton (S)	1,038	1.4	-6 -0.6
		Cuballing (S)	712	-0.5	-10 -1.4
		Dumbleyung (S)	737	-3.3	-13 -1.7
		Narrogin (T)	4,719	0.2	-31 -0.7
		Narrogin (S)	775	-1.7	5 0.6
		Pingelly (S)	1,190	0.1	-21 -1.7
		Wagin (S)	1,848	-1.1	-23 -1.2
		Wandering (S)	341	-0.4	9 2.7
		West Arthur (S)	918	-1.5	12 1.3
		Wickepin (S)	725	-3.1	-19 -2.6
		Williams (S)	930	-1.4	-25 -2.6
		Total	13,933	-0.7	-122 -0.9
	Lakes SSD	Corrigin (S)	1,286	-0.3	-11 -0.8
		Kondinin (S)	1,029	-2.2	- -
		Kulin (S)	907	-1.3	1 0.1

STATISTICAL DIVISION (SD)	Statistical Subdivision (SSD)	Statistical Local Area (SLA)	Population		Change	
			2002p	1997/02p	2001/02p	
			No.	% (a)	No.	%
		Lake Grace (S)	1,568	-2.4	-41	-2.5
		Total	4,790	-1.6	-51	-1.1
TOTAL	UPPER GREAT SOUTHERN SD		18,723	-0.9	-173	-0.9
MIDLANDS SD	Moore SSD	Chittering (S)	3,054	4.6	118	4.0
		Dandaragan (S)	2,917	1.9	-23	-0.8
		Gingin (S)	4,405	3.8	148	3.5
		Moora (S)	2,683	0.2	-11	-0.4
		Victoria Plains (S)	968	-0.5	-2	-0.2
		Total	14,027	2.5	230	1.7
	Avon SSD	Beverley (S)	1,563	1.3	-10	-0.6
		Cunderdin (S)	1,463	-0.3	11	0.8
		Dalwallinu (S)	1,812	0.3	-70	-3.7
		Dowerin (S)	815	-0.9	-22	-2.6
		Goomalling (S)	967	-1.7	1	0.1
		Koorda (S)	481	-4.5	-7	-1.4
		Northam (T)	6,532	0.4	-41	-0.6
		Northam (S)	3,691	2.4	21	0.6
		Quairading (S)	1,127	-1.8	-8	-0.7
		Tammin (S)	441	-0.3	-	-
		Toodyay (S)	4,150	3.1	82	2.0
		Wongan-Ballidu (S)	1,553	-1.0	-40	-2.5
		Wyalkatchem (S)	685	1.3	10	1.5
		York (S)	3,255	1.9	22	0.7
		Total	28,535	0.8	-51	-0.2
	Campion SSD	Bruce Rock (S)	1,084	-1.7	-43	-3.8
		Kellerberrin (S)	1,196	-1.4	-20	-1.6
		Merredin (S)	3,715	-0.2	-53	-1.4
		Mount Marshall (S)	661	-2.2	-12	-1.8
		Mukinbudin (S)	703	-0.8	1	0.1
		Narembeen (S)	960	-1.6	1	0.1
		Nungarin (S)	273	-0.3	-2	-0.7
		Trayning (S)	376	-5.1	-16	-4.1
		Westonia (S)	254	-2.6	6	2.4
		Yilgarn (S)	1,775	-4.4	-50	-2.7
		Total	10,997	-1.7	-188	-1.7
TOTAL	MIDLANDS SD		53,559	0.7	-9	-
SOUTH EASTERN SD	Kalgoorlie/Boulder City Part A SSD	Kalgoorlie/Boulder (C) – Pt A	29,238	-0.3	-145	-0.5
		Total	29,238	-0.3	-145	-0.5
	Lefroy SSD	Coolgardie (S)	4,176	-5.4	-91	-2.1
		Kalgoorlie/Boulder (C) – Pt B	268	-2.0	-	-
		Laverton (S)	1,202	-0.8	-	-
		Leonora (S)	1,979	-5.9	-19	-1.0
		Menzies (S)	362	0.3	13	3.7
		Ngaanyatjarraku (S)	1,594	1.6	38	2.4
		Total	9,581	-3.7	-59	-0.6
	Johnston SSD	Dundas (S)	1,228	-4.9	-29	-2.3

STATISTICAL DIVISION (SD)	Statistical Subdivision (SSD)	Statistical Local Area (SLA)	Population		Change	
			2002p	1997/02p	2001/02p	
			No.	% (a)	No.	%
		Esperance (S)	13,329	1.3	14	0.1
		Ravensthorpe (S)	1,479	0.3	-25	-1.7
		Total	16,036	0.6	-40	-0.2
TOTAL	SOUTH EASTERN SD		54,855	-0.7	-244	-0.4
CENTRAL SD	Geraldton SSD	Geraldton (C)	19,728	-0.6	-402	-2.0
		Greenough (S) – Pt A	11,608	3.2	313	2.8
		Total	31,336	0.7	-89	-0.3
	Gascoyne SSD	Carnarvon (S)	6,715	0.9	-8	-0.1
		Exmouth (S)	2,283	1.5	-23	-1.0
		Shark Bay (S)	942	1.6	20	2.2
		Upper Gascoyne (S)	368	6.9	13	3.7
		Total	10,308	1.3	2	-
	Carnegie SSD	Cue (S)	392	-3.8	-2	-0.5
		Meekatharra (S)	1,468	-5.9	15	1.0
		Mount Magnet (S)	842	-0.3	-9	-1.1
		Murchison (S)	160	0.4	-	-
		Sandstone (S)	143	-2.0	10	7.5
		Wiluna (S)	925	-3.4	27	3.0
		Yalgoo (S)	325	-2.5	-	-
		Total	4,255	-3.6	41	1.0
	Greenough River SSD	Carnamah (S)	766	-5.0	-38	-4.7
		Chapman Valley (S)	885	0.9	9	1.0
		Coorow (S)	1,368	-1.6	-37	-0.5
		Greenough (S) Pt B	1,365	2.1	26	1.9
		Irwin (S)	3,000	3.0	-59	-1.9
		Mingenew (S)	586	-0.5	2	0.3
		Morawa (S)	964	-2.2	-21	-2.1
		Mullewa (S)	1,122	-0.1	4	0.4
		Northampton (S)	3,334	1.4	1	-
		Perenjori (S)	590	-2.7	-22	-3.6
		Three Springs (S)	747	-1.5	-4	-0.5
		Total	14,727	0.3	-109	-0.3
TOTAL	CENTRAL SD		60,626	0.4	-155	-0.3
PILBARA SD	De Grey SSD	East Pilbara (S)	5,773	-3.6	-70	-1.2
		Port Hedland (T)	12,731	-	116	0.9
		Total	18,504	-1.2	46	0.2
	Fortescue SSD	Ashburton (S)	5,816	-4.5	-129	-2.2
		Roebourne (S)	15,121	1.4	63	0.4
		Total	20,937	-0.5	-66	-0.3
TOTAL	PILBARA SD		39,441	-0.8	-20	-0.1
KIMBERLEY SD	Ord SSD	Halls Creek (S)	4,102	5.7	171	4.4
		Wyndham-East Kimberley (S)	7,413	2.7	202	2.8
		Total	11,515	3.7	373	3.3
	Fitzroy SSD	Broome (S)	13,673	5.7	477	3.6
		Derby-West Kimberley (S)	8,517	4.9	230	2.8

STATISTICAL DIVISION (SD)	Statistical Subdivision (SSD)	Statistical Local Area (SLA)	Population 2002p No.	Change	
				1997/02p % (a)	2001/02p No. %
		Total	22,190	5.4	707 3.3
TOTAL	KIMBERLEY SD		33,705	4.8	1,080 3.3
WESTERN AUSTRALIA	Grand Total		1,927,322	1.4	26,163 1.4

(a) Average annual growth rate

p - Preliminary