

LABOUR MARKET AND RELATED PAYMENTS

a monthly profile

Note: The Australian Bureau of Statistics (ABS) produces the official unemployment statistics. The figures contained in this publication are different from the ABS unemployment figures as the ABS and the Department of Employment and Workplace Relations (DEWR) use different definitions to identify the unemployed and different methods of counting (see the Appendix for more information).

This publication was produced previously by the Department of Families, Community Services and Indigenous Affairs (FaCSIA) and since October 2004 by DEWR.

This publication can be found at <http://www.workplace.gov.au/lmrp>

March 2007

Embargoed

Until 11.30 am, 25 April 2007

Annual Subscription - \$65.00

CONTENTS

	<i>Page</i>
Introduction	1
Statistical Highlights	2
Tables	
1. Labour Market Payments - Time Series	3
2. Newstart Allowees - Derivation of the job seeker population	4
3. Youth Allowees (other) - Derivation of the job seeker population	5
4. Job seekers receiving Newstart Allowance and Youth Allowance (other) - Time Series	6
5. Job seekers receiving Newstart Allowance and Youth Allowance (other) by State	7
6. Job seekers receiving Newstart Allowance and Youth Allowance (other) by Age and Sex	8
7. Job seekers receiving Newstart Allowance and Youth Allowance (other) by Area Support Office and Customer Service Centre	9
8. Job seekers receiving Newstart Allowance and Youth Allowance (other) by Fortnightly Earnings and Sex	23
Explanatory Notes	24
Glossary	30
Appendix	33
For More Information	36

INTRODUCTION

This publication presents statistical information on a monthly basis for the various types of labour market payments delivered by Centrelink largely on behalf of the Department of Employment and Workplace Relations (DEWR).

After the Machinery of Government (MOG) changes, announced in October 2004, responsibility for Newstart Allowance (NSA), Youth Allowance (other) (YA(o)), Mature Age Allowance (MAA), Partner Allowance (PA) and Widow Allowance (WA) was transferred to DEWR and responsibility for Youth Allowance (full-time students) (YA(FTS)) was transferred to the Department of Education, Science and Training (DEST).

This publication covers NSA and YA(o) in some detail and, to a lesser extent, MAA, PA, WA, YA(FTS) and YA (Australian Apprentices).

Table 1 provides information on the total number of NSA and YA recipients. The YA population is broken down into YA(o), YA(FTS) and YA(Australian Apprentices) categories. The total numbers of MAA, PA and WA recipients are also provided in this table.

Tables 2 and 3 show the derivation of the NSA and YA(o) job seeker populations (see the reference to job seekers in the 'Comparability of data' section of the *Explanatory Notes*). These populations are added together to derive the total number of job seekers.

Tables 4 to 8 provide information on the total job seeker population.

When using time series figures, it is important to note that changes have occurred over time to the conditions of eligibility for different payments. Details of these changes are provided in the *Explanatory Notes*.

All media inquiries should be directed to the Centrelink National Media Officer on (02) 6284 6442. For more general inquiries regarding further statistical information please refer to the last page of this publication for other contact details.

The next issue of this publication is scheduled for release on 23 May 2007.

STATISTICAL HIGHLIGHTS – March 2007

Between March 2006 and March 2007:

Total Newstart Allowance (NSA) recipients and Youth Allowance (other) (YA(o)) recipients **decreased by 3.3%** overall from 563,697 to 544,897 and

- ◆ decreased 2.4% for NSA from 484,784 to 473,278 and
- ◆ decreased 9.2% for YA(o) from 78,913 to 71,619.

The number of job seekers **decreased by 6.6%** overall from 378,309 to 353,178 and

- ◆ decreased 5.9% for NSA recipients from 315,923 to 297,169 and
- ◆ decreased 10.2% for YA(o) recipients from 62,386 to 56,009.

Long-term job seekers decreased by 8.8% from 214,293 to 195,351.

Short-term job seekers decreased by 3.8% from 164,016 to 157,827.

For comparisons between DEWR unemployment labour market payment numbers and ABS labour force unemployment statistics, see Appendix.

**Newstart Allowance and Youth Allowance (other)
March 2005 to March 2007**

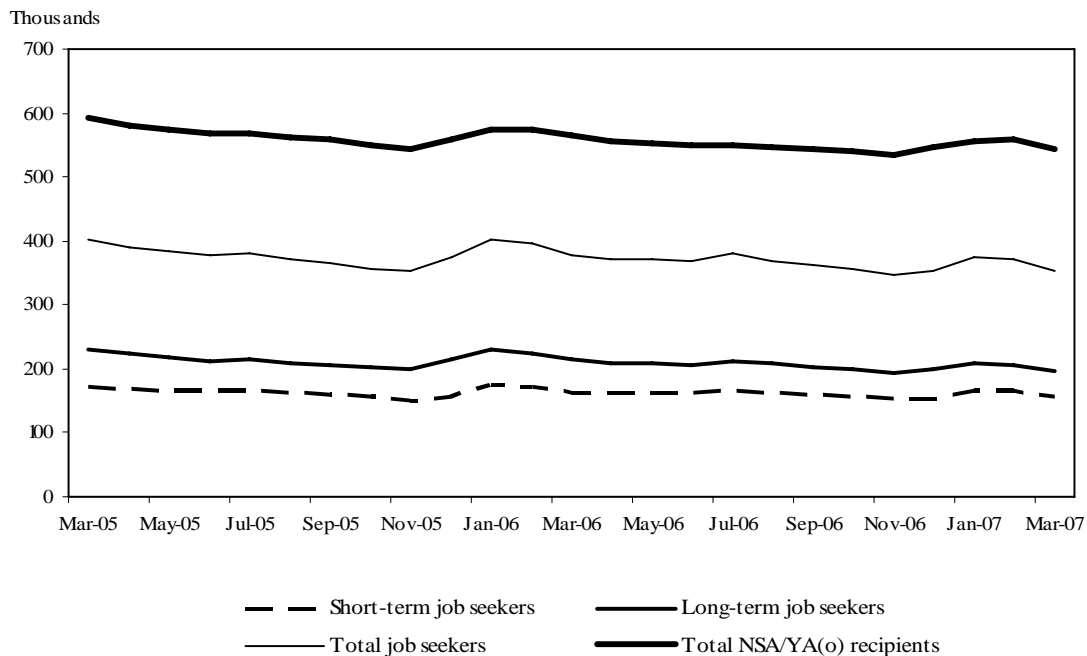


TABLE 1 - LABOUR MARKET PAYMENTS - TIME SERIES (a)

	Newstart Allowance		Youth Allowance			Mature Age Allowance	Partner Allowance	Widow Allowance
	Long-term (b)	Total	Other	Full-time Students (c)	Australian Apprentices (d)			
February 1994 (e)	472,785	977,796
March 2005	304,783	509,892	83,604	263,308	..	23,918	76,588	45,100
April 2005	299,698	500,391	80,661	274,240	..	22,935	75,014	45,009
May 2005	295,728	494,847	79,896	281,184	..	22,032	73,601	44,976
June 2005	291,977	488,910	79,564	284,926	0	21,144	72,331	44,864
July 2005	291,683	487,653	79,816	279,040	742	20,258	71,140	44,841
August 2005	291,607	485,823	77,459	285,864	1,655	19,462	70,365	45,009
September 2005	289,974	482,072	76,272	288,479	2,285	18,697	69,624	45,158
October 2005	287,468	475,490	72,915	280,308	2,416	17,939	68,919	45,287
November 2005	286,345	470,557	73,576	274,547	2,471	17,335	68,420	45,538
December 2005	290,391	476,028	84,022	233,273	2,486	16,623	67,762	45,830
January 2006	294,100	487,251	85,628	223,059	2,478	15,869	66,905	45,849
February 2006	294,250	491,955	83,559	232,189	2,731	15,111	65,681	45,760
March 2006	291,020	484,784	78,913	250,079	2,994	14,271	64,282	45,622
April 2006	288,017	479,378	76,747	260,349	3,190	13,547	62,924	45,438
May 2006	285,853	475,830	75,533	266,392	3,181	12,836	61,863	45,212
June 2006	284,288	474,125	75,366	270,081	3,323	12,110	60,829	45,096
July 2006	285,152	474,477	76,173	264,863	3,376	11,379	59,401	44,639
August 2006	284,943	472,448	72,634	271,591	3,472	10,731	58,213	44,184
September 2006	285,218	472,222	71,104	276,235	3,643	10,049	56,965	43,705
October 2006	284,276	470,340	69,511	277,061	3,740	9,430	55,683	43,349
November 2006	282,694	466,631	68,721	267,042	3,683	8,892	54,611	43,112
December 2006	284,499	469,233	76,480	226,902	3,571	8,293	53,398	42,903
January 2007	286,614	478,033	77,358	216,869	3,487	7,745	52,205	42,530
February 2007	286,113	481,343	76,036	223,780	3,715	7,287	51,251	42,370
March 2007	281,937	473,278	71,619	239,502	4,087	6,751	50,058	42,032
<i>Variation February 2007 - March 2007</i>								
Number	-4,176	-8,065	-4,417	15,722	372	-536	-1,193	-338
Per cent	-1.5	-1.7	-5.8	7.0	10.0	-7.4	-2.3	-0.8

(a) This table presents data using the revised method of measuring the number of people receiving labour market payments introduced in July 2002. Revised historical data from May 1998 to June 2002 is in Table A (May 1998 - June 2000) and Table 1 (July 2000 - July 2002) of July 2002 publication.

(b) Long-term Newstart allowees are persons who have been receiving income support for 12 months or more.

(c) The number of full time students does not include those who have traded in their entire Youth Allowance entitlement for a loan under the Student Financial Supplement Loan Scheme. The Government announced on 24 April 2003 that no further loans would be issued under this Scheme from 1 January 2004. For further details, refer to the Explanatory Notes at the back of this publication.

(d) Australian Apprenticeships combine employment with structured training to provide a nationally recognised qualification. Australian Apprentices enter formal agreements known as either 'Training Agreements' or 'Contracts of Training' which set out the relationship between the employer and the Australian Apprentice and their respective rights and responsibilities.

(e) February 1994 data has been included for comparison purposes due to the peak in the number of persons receiving JSA/NSA at this point in time.

Note: Most of the figures in this publication are averages and have been rounded. As a result, discrepancies may occur between sums of component items and totals, and in the calculation of variations.

TABLE 2 - NEWSTART ALLOWEES - DERIVATION OF THE JOB SEEKER POPULATION

	February 2007	March			Variation February - March	
		Males	Females	Persons	Number	Per cent
Short-term NSA Customers	195,230	124,599	66,742	191,341	-3,889	-2.0
CPS recipients (a)	3,740	2,656	1,079	3,735	-5	-0.1
Did not receive a payment (b)	10,676	7,316	4,942	12,258	1,582	14.8
Received a payment	180,814	114,627	60,721	175,348	-5,466	-3.0
Incapacitated (c)	18,025	10,905	6,907	17,812	-213	-1.2
Training	8,995	6,381	3,558	9,939	944	10.5
Self-employment development (d)	436	345	200	545	109	25.0
Voluntary/part-time work (e)	2,544	1,232	1,400	2,632	88	3.5
Other/temporary exemptions (f)	12,667	7,388	5,044	12,432	-235	-1.9
Short-term NSA job seekers (g)	138,147	88,376	43,612	131,988	-6,159	-4.5
Long-term NSA Customers	286,113	173,728	108,209	281,937	-4,176	-1.5
CPS recipients (a)	8,991	6,112	2,859	8,971	-20	-0.2
Did not receive a payment (b)	9,016	5,964	4,623	10,587	1,571	17.4
Received a payment	268,106	161,652	100,727	262,379	-5,727	-2.1
Incapacitated (c)	21,460	12,020	8,962	20,982	-478	-2.2
Training	41,434	27,301	15,959	43,260	1,826	4.4
Self-employment development (d)	225	155	125	280	55	24.4
Voluntary/part-time work (e)	9,515	5,496	3,982	9,478	-37	-0.4
Other/temporary exemptions (f)	23,136	14,090	9,108	23,198	62	0.3
Long-term NSA job seekers (g)	172,336	102,590	62,591	165,181	-7,155	-4.2
All NSA Customers (h)	481,343	298,327	174,951	473,278	-8,065	-1.7
CPS recipients (a)	12,731	8,768	3,938	12,706	-25	-0.2
Did not receive a payment (b)	19,692	13,280	9,565	22,845	3,153	16.0
Received a payment	448,920	276,279	161,448	437,727	-11,193	-2.5
Incapacitated (c)	39,485	22,925	15,869	38,794	-691	-1.8
Training	50,429	33,682	19,517	53,199	2,770	5.5
Self-employment development (d)	661	500	325	825	164	24.8
Voluntary/part-time work (e)	12,059	6,728	5,382	12,110	51	0.4
Other/temporary exemptions (f)	35,803	21,478	14,152	35,630	-173	-0.5
All NSA job seekers (g)	310,483	190,966	106,203	297,169	-13,314	-4.3

(a) Persons with NSA eligibility who received CDEP Participant Supplement or add ons while participating in CDEP Projects.

(b) Persons who did not receive a payment due to their income and/or that of their partner. This group is often referred to as zero-paid.

(c) Activity code "incapacitated" relates to NSA recipients who have become temporarily ill or incapacitated.

(d) Those customers exempted from job search while they develop self-employment opportunities.

(e) Those customers undertaking approved full-time voluntary work or combinations of voluntary and part-time work who are not required to seek work.

(f) Includes other customers known not to have job search obligations. See 'Job seekers' in Explanatory Notes.

(g) Those customers who received a payment and generally are required to search for work. These customers form the basis of the population group in Tables 4 - 7.

(h) On 1 July 2006, the Australian Government introduced the Welfare to Work reforms. These reforms impact on the NSA population.

Notes:

- For information on short-term and long-term categories please refer to the Glossary.

- Most of the figures in this publication are averages and have been rounded. As a result, discrepancies may occur between sums of component items and totals, and in the calculation of variations.

TABLE 3 - YOUTH ALLOWEES (OTHER) - DERIVATION OF THE JOB SEEKER POPULATION

	February 2007	March			Variation February - March	
		Males	Females	Persons	Number	Per cent
Short-term YA (other) Customers	34,553	17,742	15,163	32,905	-1,648	-4.8
CPS recipients (a)	1,964	1,141	696	1,837	-127	-6.5
Did not receive a payment (b)	654	341	375	716	62	9.5
Received a payment	31,935	16,260	14,092	30,352	-1,583	-5.0
Part-time study & work (c)	2	0	1	1	-1	-50.0
Part-time study & other YA activities (d)	56	26	41	67	11	19.6
Incapacitated (e)	1,634	800	823	1,623	-11	-0.7
Training	1,086	739	462	1,201	115	10.6
Self-employment development (e)	4	4	1	5	1	25.0
Full-time voluntary work	0	0	0	0	0	0.0
Other non-jobseekers (e)	1,719	694	922	1,616	-103	-6.0
Short-term YA (other) job seekers (f)	27,434	13,997	11,842	25,839	-1,595	-5.8
Long-term YA (other) Customers	41,483	18,326	20,388	38,714	-2,769	-6.7
CPS recipients (a)	1,641	981	626	1,607	-34	-2.1
Did not receive a payment (b)	1,092	516	686	1,202	110	10.1
Received a payment	38,750	16,829	19,076	35,905	-2,845	-7.3
Part-time study & work (c)	1	0	1	1	0	0.0
Part-time study & other YA activities (d)	46	13	36	49	3	6.5
Incapacitated (e)	1,431	532	863	1,395	-36	-2.5
Training	2,718	1,495	1,297	2,792	74	2.7
Self-employment development (e)	4	1	4	5	1	25.0
Full-time voluntary work	0	0	0	0	0	0.0
Other non-jobseekers (e)	1,502	589	904	1,493	-9	-0.6
Long-term YA (other) job seekers (f)	33,048	14,199	15,971	30,170	-2,878	-8.7
All YA (other) Customers (g)	76,036	36,068	35,551	71,619	-4,417	-5.8
CPS recipients (a)	3,605	2,122	1,322	3,444	-161	-4.5
Did not receive a payment (b)	1,746	857	1,061	1,918	172	9.9
Received a payment	70,685	33,089	33,168	66,257	-4,428	-6.3
Part-time study & work (c)	3	0	2	2	-1	-33.3
Part-time study & other YA activities (d)	102	39	77	116	14	13.7
Incapacitated (e)	3,065	1,332	1,686	3,018	-47	-1.5
Training	3,804	2,234	1,759	3,993	189	5.0
Self-employment development (e)	8	5	5	10	2	25.0
Full-time voluntary work	0	0	0	0	0	0.0
Other non-jobseekers (e)	3,221	1,283	1,826	3,109	-112	-3.5
All YA (other) job seekers (f)	60,482	28,196	27,813	56,009	-4,473	-7.4

(a) Persons with YA eligibility who received CDEP Participant Supplement or add ons while participating in CDEP projects.

(b) Persons who did not receive a payment due to their own income and/or that of their partner or parents, where applicable. This group is often referred to as zero-paid.

(c) Those customers undertaking approved part-time study and work who are considered to have a full activity load and are not required to seek work.

(d) Those customers undertaking approved part-time study and other activities who are considered to have a full activity load and are not required to seek work.

(e) These categories are defined in the same way as in Table 2, except that those customers combining these activities with part-time study are classified under part-time study and other activities.

(f) Those customers who received a payment and generally are required to search for work. These customers form the basis of the population group in Tables 4 - 7.

(g) On 1 July 2006, the Australian Government introduced the Welfare to Work reforms. These reforms impact on the YA(o) population.

Notes:

- For information on short-term and long-term categories please refer to the Glossary.

- Most of the figures in this publication are averages and have been rounded. As a result, discrepancies may occur between sums of component items and totals, and in the calculation of variations.

TABLE 4 - JOB SEEKERS RECEIVING NEWSTART ALLOWANCE AND YOUTH ALLOWANCE (OTHER)
TIME SERIES (a)

	Short-term	Long-term	Total
March 2005	172,254	231,336	403,590
April 2005	168,095	223,258	391,353
May 2005	167,200	217,727	384,927
June 2005	165,755	212,595	378,350
July 2005	167,154	213,585	380,739
August 2005	162,525	209,424	371,949
September 2005	159,378	205,254	364,632
October 2005	155,525	201,678	357,203
November 2005	151,863	200,077	351,940
December 2005	157,829	215,881	373,710
January 2006	173,502	229,230	402,732
February 2006	173,305	224,048	397,353
March 2006	164,016	214,293	378,309
April 2006	161,900	209,435	371,335
May 2006	162,182	207,935	370,117
June 2006	162,331	205,212	367,543
July 2006	165,898	213,281	379,179
August 2006	161,929	207,905	369,834
September 2006	159,462	203,024	362,486
October 2006	156,815	198,967	355,782
November 2006	152,125	193,719	345,844
December 2006	153,342	201,044	354,386
January 2007	165,924	209,395	375,319
February 2007	165,581	205,384	370,965
March 2007	157,827	195,351	353,178
<i>Variation February 2007 - March 2007</i>			
Number	-7,754	-10,033	-17,787
Per cent	-4.7	-4.9	-4.8

(a) This table presents data using the revised method of measuring the number of people receiving labour market payment introduced in July 2002. Revised historical data from May 1998 to June 2002 is in Table B of July 2002 publication.

Notes:

- For information on short-term and long-term categories please refer to the Glossary.

- Most of the figures in this publication are averages and have been rounded. As a result, discrepancies may occur between sums of component items and totals, and in the calculation of variations.

**TABLE 5 - JOB SEEKERS RECEIVING NEWSTART ALLOWANCE AND YOUTH ALLOWANCE (OTHER)
BY STATE**

<i>State</i>	February 2007	March 2007	Variation	
			February - March Number	Per cent
SHORT-TERM JOB SEEKERS				
New South Wales	58,058	55,625	-2,433	-4.2
Victoria	41,248	38,840	-2,408	-5.8
Queensland	32,708	31,804	-904	-2.8
South Australia	14,076	13,221	-855	-6.1
Western Australia	11,427	10,757	-670	-5.9
Tasmania	4,913	4,523	-390	-7.9
Northern Territory	1,848	1,891	43	2.3
Australian Capital Territory	1,303	1,166	-137	-10.5
AUSTRALIA	165,581	157,827	-7,754	-4.7
LONG-TERM JOB SEEKERS				
New South Wales	74,960	71,544	-3,416	-4.6
Victoria	52,894	50,382	-2,512	-4.7
Queensland	32,586	30,856	-1,730	-5.3
South Australia	18,650	17,741	-909	-4.9
Western Australia	12,300	11,467	-833	-6.8
Tasmania	8,693	8,242	-451	-5.2
Northern Territory	3,476	3,469	-7	-0.2
Australian Capital Territory	1,825	1,650	-175	-9.6
AUSTRALIA	205,384	195,351	-10,033	-4.9
TOTAL JOB SEEKERS				
New South Wales	133,018	127,169	-5,849	-4.4
Victoria	94,142	89,222	-4,920	-5.2
Queensland	65,294	62,660	-2,634	-4.0
South Australia	32,726	30,962	-1,764	-5.4
Western Australia	23,727	22,224	-1,503	-6.3
Tasmania	13,606	12,765	-841	-6.2
Northern Territory	5,324	5,360	36	0.7
Australian Capital Territory	3,128	2,816	-312	-10.0
AUSTRALIA	370,965	353,178	-17,787	-4.8

Note: The majority of figures in this publication are averages, and have been rounded. As a result, discrepancies may occur between sums of component items and totals. The discrepancies may also affect the calculation of the variations in Table 2, 3, 5 and 7.

**TABLE 6 - JOB SEEKERS RECEIVING NEWSTART ALLOWANCE AND YOUTH ALLOWANCE (OTHER)
BY AGE AND SEX, AS AT MARCH 2007**

Age	Short-term job seekers		Long-term job seekers		Total job seekers	
	Number	Per cent	Number	Per cent	Number	Per cent
MALES						
Less than 18 years	4,288	4.2	2,795	2.4	7,083	3.2
18 - 20 years	9,705	9.5	11,399	9.8	21,104	9.6
21 - 24 years	17,526	17.1	14,306	12.2	31,832	14.5
25 - 29 years	16,599	16.2	14,576	12.5	31,175	14.2
30 - 39 years	24,520	24.0	24,506	21.0	49,026	22.4
40 - 49 years	15,631	15.3	20,665	17.7	36,296	16.6
50 - 59 years	10,087	9.9	18,748	16.1	28,835	13.2
60 years and over	4,018	3.9	9,793	8.4	13,811	6.3
Total	102,374	100.0	116,788	100.0	219,162	100.0
FEMALES						
Less than 18 years	4,298	7.8	3,413	4.3	7,711	5.8
18 - 20 years	7,540	13.6	12,554	16.0	20,094	15.0
21 - 24 years	9,827	17.7	10,553	13.4	20,380	15.2
25 - 29 years	6,259	11.3	6,865	8.7	13,124	9.8
30 - 39 years	8,625	15.6	10,435	13.3	19,060	14.2
40 - 49 years	9,259	16.7	15,472	19.7	24,731	18.5
50 - 59 years	7,684	13.9	15,210	19.4	22,894	17.1
60 years and over	1,961	3.5	4,061	5.2	6,022	4.5
Total	55,453	100.0	78,563	100.0	134,016	100.0
PERSONS						
Less than 18 years	8,586	5.4	6,208	3.2	14,794	4.2
18 - 20 years	17,245	10.9	23,953	12.3	41,198	11.7
21 - 24 years	27,353	17.3	24,859	12.7	52,212	14.8
25 - 29 years	22,858	14.5	21,441	11.0	44,299	12.5
30 - 39 years	33,145	21.0	34,941	17.9	68,086	19.3
40 - 49 years	24,890	15.8	36,137	18.5	61,027	17.3
50 - 59 years	17,771	11.3	33,958	17.4	51,729	14.6
60 years and over	5,979	3.8	13,854	7.1	19,833	5.6
Total	157,827	100.0	195,351	100.0	353,178	100.0

**TABLE 7 - JOB SEEKERS RECEIVING NEWSTART ALLOWANCE AND YOUTH ALLOWANCE
(OTHER) BY AREA SUPPORT OFFICE AND CUSTOMER SERVICE CENTRE**

<i>Area Support Office and Customer Service Centre</i>	February 2007	March 2007	Variation	
			February - March Number	Per cent
<i>EAST COAST (SYDNEY)</i>				
Bondi Junction	1,249	1,195	-54	-4.3
Chatswood	1,148	1,087	-61	-5.3
Darlinghurst	1,652	1,546	-106	-6.4
Darlinghurst YSU	65	56	-9	%
Hornsby	936	853	-83	-8.9
Leichhardt	1,506	1,409	-97	-6.4
Maroubra	1,345	1,293	-52	-3.9
Marrickville	1,529	1,449	-80	-5.2
Northern Beaches	1,078	1,048	-30	-2.8
Sydney Central YSU	0	0	0	%
Other (a)	14	10	-4	%
Total	10,522	9,946	-576	-5.5
<i>EAST COAST (WOLLONGONG)</i>				
Caringbah	1,484	1,360	-124	-8.4
Corrimal	1,438	1,347	-91	-6.3
Dapto	1,275	1,194	-81	-6.4
Hurstville	1,443	1,395	-48	-3.3
Nowra	2,328	2,226	-102	-4.4
Redfern	1,424	1,381	-43	-3.0
Rockdale	1,543	1,463	-80	-5.2
Shellharbour	1,528	1,456	-72	-4.7
Sutherland	176	233	57	32.4
Ulladulla	580	571	-9	-1.6
Wollongong	1,739	1,585	-154	-8.9
Other (a)	24	21	-3	%
Total	14,982	14,232	-750	-5.0

Note: For footnotes see end of table.

**TABLE 7 - JOB SEEKERS RECEIVING NEWSTART ALLOWANCE AND YOUTH ALLOWANCE
(OTHER) BY AREA SUPPORT OFFICE AND CUSTOMER SERVICE CENTRE**

<i>Area Support Office and Customer Service Centre</i>	February 2007	March 2007	Variation	
			February - March Number	Per cent
HUNTER NSW				
Armidale	1,325	1,204	-121	-9.1
Cessnock	879	867	-12	-1.4
Charlestown	2,245	2,058	-187	-8.3
Ettalong	1,031	994	-37	-3.6
Forster	875	866	-9	-1.0
Gosford*	1,763	1,682	-81	-4.6
Gunnedah	503	490	-13	-2.6
Inverell	717	696	-21	-2.9
Kempsey	1,350	1,268	-82	-6.1
Kurri Kurri	614	580	-34	-5.5
Lakehaven	1,805	1,730	-75	-4.2
Maitland	1,667	1,667	0	0.0
Mayfield	1,161	1,113	-48	-4.1
Muswellbrook	534	526	-8	-1.5
Nambucca Heads	1,090	1,023	-67	-6.1
Nelson Bay	538	552	14	2.6
Newcastle	1,616	1,490	-126	-7.8
Port Macquarie	1,900	1,808	-92	-4.8
Raymond Terrace	1,019	978	-41	-4.0
Singleton	285	274	-11	-3.9
Tamworth	1,826	1,727	-99	-5.4
Taree	1,869	1,804	-65	-3.5
The Entrance	1,357	1,359	2	0.1
Toronto	1,242	1,174	-68	-5.5
Wallsend	1,791	1,681	-110	-6.1
Wyong	678	642	-36	-5.3
Other (a)	67	57	-10	%
Total	31,747	30,310	-1,437	-4.5

Note: For footnotes see end of table.

*On 12 May 2003 recipients transferred from Gosford NSS to Gosford CSC.

**TABLE 7 - JOB SEEKERS RECEIVING NEWSTART ALLOWANCE AND YOUTH ALLOWANCE
(OTHER) BY AREA SUPPORT OFFICE AND CUSTOMER SERVICE CENTRE**

<i>Area Support Office and Customer Service Centre</i>	February 2007	March 2007	Variation	
			February - March Number	Per cent
<i>SOUTH METROPOLITAN NSW</i>				
Ashfield	0	0	0	%
Bankstown	4,049	3,929	-120	-3.0
Burwood*	1,728	1,648	-80	-4.6
Cabramatta	2,087	2,016	-71	-3.4
Camden	602	575	-27	-4.5
Campbelltown	2,554	2,496	-58	-2.3
Campsie	2,590	2,524	-66	-2.5
Fairfield	3,781	3,595	-186	-4.9
Ingleburn	1,262	1,256	-6	-0.5
Lakemba	18	22	4	%
Liverpool	3,982	3,820	-162	-4.1
Revesby	4	4	0	%
Strathfield	0	0	0	%
Other (a)	16	12	-4	%
Total	22,673	21,897	-776	-3.4
<i>WEST NSW</i>				
Auburn	2,417	2,318	-99	-4.1
Baulkham Hills	769	725	-44	-5.7
Blacktown	3,241	3,183	-58	-1.8
Hawkesbury	879	860	-19	-2.2
Katoomba	739	690	-49	-6.6
Lithgow	768	753	-15	-2.0
Merrylands	1,830	1,795	-35	-1.9
Mt Druitt	2,610	2,597	-13	-0.5
Mudgee	746	693	-53	-7.1
Parramatta	1,987	1,822	-165	-8.3
Penrith	1,851	1,766	-85	-4.6
Ryde	1,018	931	-87	-8.5
Springwood	459	436	-23	-5.0
St Marys	1,797	1,728	-69	-3.8
Other (a)	26	32	6	%
Total	21,137	20,329	-808	-3.8

Note: For footnotes see end of table.

*Burwood CSC was opened on 24 October 2005 and recipients previously serviced by Ashfield and Strathfield will be serviced in Burwood.

Ashfield and Strathfield CSCs closed on 21 October 2005.

**TABLE 7 - JOB SEEKERS RECEIVING NEWSTART ALLOWANCE AND YOUTH ALLOWANCE
(OTHER) BY AREA SUPPORT OFFICE AND CUSTOMER SERVICE CENTRE**

<i>Area Support Office and Customer Service Centre</i>	February 2007	March 2007	Variation	
			February - March Number	Per cent
<i>SOUTH WEST NSW</i>				
Albury	2,371	2,265	-106	-4.5
Batemans Bay	964	933	-31	-3.2
Bathurst	989	949	-40	-4.0
Bega	796	756	-40	-5.0
Belconnen	972	875	-97	-10.0
Bourke	453	441	-12	-2.6
Bowral	539	519	-20	-3.7
Braddon	913	816	-97	-10.6
Cooma	299	278	-21	-7.0
Cowra	544	523	-21	-3.9
Deniliquin	323	310	-13	-4.0
Dubbo	2,040	1,972	-68	-3.3
Goulburn	763	761	-2	-0.3
Griffith	547	558	11	2.0
Gungahlin	91	80	-11	%
Lanyon	44	39	-5	%
Leeton	335	317	-18	-5.4
Narooma	388	378	-10	-2.6
Orange	1,173	1,105	-68	-5.8
Parkes	1,076	1,037	-39	-3.6
Queanbeyan	444	424	-20	-4.5
Tuggeranong	596	549	-47	-7.9
Tumut	362	364	2	0.6
Wagga	1,835	1,743	-92	-5.0
Woden	500	458	-42	-8.4
Yass	115	109	-6	-5.2
Young	468	434	-34	-7.3
Other (a)	28	30	2	%
Total	19,968	19,023	-945	-4.7

Note: For footnotes see end of table.

**TABLE 7 - JOB SEEKERS RECEIVING NEWSTART ALLOWANCE AND YOUTH ALLOWANCE
(OTHER) BY AREA SUPPORT OFFICE AND CUSTOMER SERVICE CENTRE**

<i>Area Support Office and Customer Service Centre</i>	February 2007	March 2007	Variation	
			February - March Number	Per cent
<i>NORTH-CENTRAL VICTORIA</i>				
Box Hill	1,803	1,707	-96	-5.3
Broadmeadows	4,000	3,895	-105	-2.6
Darebin	3,793	3,592	-201	-5.3
Echuca	547	515	-32	-5.9
Epping	2,020	1,822	-198	-9.8
Greensborough	1,647	1,561	-86	-5.2
Heidelberg	35	49	14	%
Lilydale	1,629	1,560	-69	-4.2
Moreland	2,692	2,535	-157	-5.8
Newmarket	1,715	1,583	-132	-7.7
Ringwood	1,785	1,619	-166	-9.3
Seymour	664	649	-15	-2.3
Shepparton	2,334	2,070	-264	-11.3
Sth Melbourne	778	759	-19	-2.4
Wangaratta	1,847	1,761	-86	-4.7
Windsor (VIC)	2,927	2,772	-155	-5.3
Yarra*	2,460	2,264	-196	-8.0
Other (a)	26	25	-1	%
Total	32,702	30,738	-1,964	-6.0

Note: For footnotes see end of table.

* Yarra CSC was opened on 27 June 2005. Recipients previously serviced by Fitzroy and Richmond CSCs have been transferred to Yarra CSC.

**TABLE 7 - JOB SEEKERS RECEIVING NEWSTART ALLOWANCE AND YOUTH ALLOWANCE
(OTHER) BY AREA SUPPORT OFFICE AND CUSTOMER SERVICE CENTRE**

<i>Area Support Office and Customer Service Centre</i>	February 2007	March 2007	Variation	
			February - March Number	Per cent
<i>SOUTH-EAST VICTORIA</i>				
Bairnsdale	935	868	-67	-7.2
Belgrave*	564	545	-19	-3.4
Camberwell	1,095	1,018	-77	-7.0
Cheltenham	1,842	1,721	-121	-6.6
Cranbourne	1,300	1,243	-57	-4.4
Dandenong	2,738	2,632	-106	-3.9
Fountain Gate	2,510	2,454	-56	-2.2
Frankston	3,142	3,022	-120	-3.8
Glen Waverley	1,034	971	-63	-6.1
Leongatha	1	0	-1	%
Mornington	504	508	4	0.8
Morwell	2,429	2,297	-132	-5.4
Oakleigh	1,902	1,789	-113	-5.9
Rosebud	888	858	-30	-3.4
Rowville	461	425	-36	-7.8
Sale	888	865	-23	-2.6
Springvale	2,482	2,355	-127	-5.1
Wantirna*	1,339	1,287	-52	-3.9
Warragul	528	495	-33	-6.3
Wonthaggi	674	649	-25	-3.7
Other (a)	17	18	1	%
Total	27,273	26,020	-1,253	-4.6

Note: For footnotes see end of table.

* Belgrave and Wantirna CSCs were previously included under Knox. Knox no longer exists and has been removed from list.

Belgrave and Wantirna CSCs are shown independently.

**TABLE 7 - JOB SEEKERS RECEIVING NEWSTART ALLOWANCE AND YOUTH ALLOWANCE
(OTHER) BY AREA SUPPORT OFFICE AND CUSTOMER SERVICE CENTRE**

<i>Area Support Office and Customer Service Centre</i>	February 2007	March 2007	Variation	
			February - March Number	Per cent
WEST VICTORIA				
Ararat	339	300	-39	-11.5
Ballarat	2,943	2,685	-258	-8.8
B Central*	507	442	-65	-12.8
Bendigo	2,828	2,698	-130	-4.6
Colac	460	449	-11	-2.4
Corio	2,019	1,895	-124	-6.1
Essendon (Airport West)	1,309	1,266	-43	-3.3
Footscray	1,701	1,625	-76	-4.5
Geelong	3,375	3,163	-212	-6.3
Hamilton	435	420	-15	-3.4
Horsham	826	814	-12	-1.5
Maryborough (VIC)	539	497	-42	-7.8
Melton	1,142	1,125	-17	-1.5
Mildura	1,835	1,733	-102	-5.6
Newport	1,165	1,148	-17	-1.5
Portland	547	490	-57	-10.4
Stawell	205	195	-10	-4.9
Sunbury	798	765	-33	-4.1
Sunshine	3,142	2,978	-164	-5.2
Swan Hill	855	813	-42	-4.9
Warrnambool	898	853	-45	-5.0
Watergardens	3,487	3,364	-123	-3.5
Werribee	2,576	2,507	-69	-2.7
Other (a)	34	32	-2	%
Total	33,965	32,257	-1,708	-5.0

Note: For footnotes see end of table.

*On 10 October 2005 B Central was opened and recipients previously serviced by Bendigo will be serviced in B Central.

**TABLE 7 - JOB SEEKERS RECEIVING NEWSTART ALLOWANCE AND YOUTH ALLOWANCE
(OTHER) BY AREA SUPPORT OFFICE AND CUSTOMER SERVICE CENTRE**

<i>Area Support Office and Customer Service Centre</i>	February 2007	March 2007	Variation	
			February - March Number	Per cent
BRISBANE				
Annerley	945	854	-91	-9.6
Bundaberg	2,914	2,862	-52	-1.8
Caboolture	1,995	1,924	-71	-3.6
Caloundra	1,061	1,025	-36	-3.4
Capalaba	634	593	-41	-6.5
Chermside	923	893	-30	-3.3
Cleveland	733	696	-37	-5.0
Fortitude Valley	1,373	1,259	-114	-8.3
Gympie	1,271	1,232	-39	-3.1
Hervey Bay	1,172	1,128	-44	-3.8
Kawana Waters	512	478	-34	-6.6
Kingaroy	793	722	-71	-9.0
Maroochydore	1,368	1,321	-47	-3.4
Maryborough	1,160	1,113	-47	-4.1
Mitchelton	909	802	-107	-11.8
Mt Gravatt	1,694	1,593	-101	-6.0
Nambour	1,009	974	-35	-3.5
Noosa	977	967	-10	-1.0
Nundah	1,109	1,066	-43	-3.9
Redcliffe	1,487	1,384	-103	-6.9
Stones Corner	1,518	1,398	-120	-7.9
Strathpine	928	867	-61	-6.6
Toowong	881	792	-89	-10.1
Wynnum	730	699	-31	-4.2
Other (a)	20	20	0	%
Total	28,116	26,662	-1,454	-5.2

Note: For footnotes see end of table.

**TABLE 7 - JOB SEEKERS RECEIVING NEWSTART ALLOWANCE AND YOUTH ALLOWANCE
(OTHER) BY AREA SUPPORT OFFICE AND CUSTOMER SERVICE CENTRE**

<i>Area Support Office and Customer Service Centre</i>	February 2007	March 2007	Variation	
			February - March Number	Per cent
<i>CENTRAL & NORTHERN QUEENSLAND</i>				
Atherton	604	616	12	2.0
Ayr	434	451	17	3.9
Biloela	141	137	-4	-2.8
Bowen	461	485	24	5.2
Cairns EMS (3)	2,539	2,551	12	0.5
Cairns FAO (3)	8	4	-4	%
Cairns Ret (3)	1	0	-1	%
Charters Towers	291	277	-14	-4.8
Edmonton	2	0	-2	%
Emerald	270	259	-11	-4.1
Gladstone	787	780	-7	-0.9
Greenfields	7	9	2	%
Indigenous ISC (2)	544	512	-32	-5.9
Ingham	337	334	-3	-0.9
Innisfail	624	604	-20	-3.2
Longreach (4)	87	86	-1	%
Mackay	1,511	1,484	-27	-1.8
Mareeba	420	384	-36	-8.6
Mossman	333	383	50	15.0
Mt Isa	781	735	-46	-5.9
Normanton	132	130	-2	-1.5
Palm Island (2)	268	263	-5	-1.9
Rockhampton	1,917	1,802	-115	-6.0
Smithfield	2	4	2	%
Thursday Is	155	148	-7	-4.5
Townsville City (1)	1	4	3	%
Townsville Employment Services (1)	2,868	2,794	-74	-2.6
Townsville FAO (1)	5	2	-3	%
Townsville Retirement (1)	1	2	1	%
Whitsunday	307	335	28	9.1
Yarrabah RASC (2)	228	227	-1	-0.4
Yeppoon	367	345	-22	-6.0
Other (a)	288	258	-30	-10.4
Total	16,721	16,405	-316	-1.9

Note: For footnotes see end of the table.

(1). As of November 2003 the above offices have changed names. Townsville Employment Services was previously known as Aitkenvale (Centrepoint), Townsville FAO was previously known as Ross River (Elizabeth St) and Townsville Retirement was previously known as Willows.

Unemployment benefit recipients are being transferred from Townsville Retirement to Townsville Employment Services. Townsville City is now an access point only and recipients are being transferred within the Townsville area to the appropriate CSCs.

(2). As of 29 March 2004 Cairns YAC is now known as Yarrabah RASC, Cairns Remote is now known as Indigenous ISC and Townsville YSC is now known as Palm Island. Recipients are being transferred from these sites to better service the needs of indigenous and rural recipients.

(3). As of 28 May 2004, Cairns is now known as Cairns EMS, Earville is now known as Cairns FAO and Cairns Grafton St is now known as Cairns Ret.

(4). Longreach CSC was opened on 25 February 2005. Recipients previously serviced by Rockhampton will be serviced in Longreach.

**TABLE 7 - JOB SEEKERS RECEIVING NEWSTART ALLOWANCE AND YOUTH ALLOWANCE
(OTHER) BY AREA SUPPORT OFFICE AND CUSTOMER SERVICE CENTRE**

<i>Area Support Office and Customer Service Centre</i>	February 2007	March 2007	Variation	
			February - March Number	Per cent
<i>SOUTH AUSTRALIA</i>				
Berri	937	865	-72	-7.7
Broken Hill	938	889	-49	-5.2
Ceduna	231	227	-4	-1.7
Cooper Pedy	146	148	2	1.4
Currie St (Adelaide)	692	718	26	3.8
Edwardstown	2,112	1,897	-215	-10.2
Elizabeth	2,674	2,612	-62	-2.3
Enfield	1,692	1,631	-61	-3.6
Gawler	1,311	1,256	-55	-4.2
Glenelg	941	856	-85	-9.0
Kadina	810	772	-38	-4.7
Kilkenny	1,859	1,766	-93	-5.0
Modbury	2,043	1,931	-112	-5.5
Mt Barker	714	672	-42	-5.9
Mt Gambier	1,404	1,341	-63	-4.5
Murray Bridge	915	866	-49	-5.4
Noarlunga	2,846	2,665	-181	-6.4
Norwood	1,744	1,518	-226	-13.0
Parkside	0	0	0	%
Port Adelaide	1,676	1,638	-38	-2.3
Port Augusta	702	670	-32	-4.6
Port Lincoln	588	564	-24	-4.1
Port Pirie	1,115	1,056	-59	-5.3
Salisbury	2,575	2,478	-97	-3.8
Torrens ville	1,517	1,432	-85	-5.6
Victor Harbor	681	659	-22	-3.2
Whyalla	855	769	-86	-10.1
Other (a)	49	57	8	%
Total	33,767	31,953	-1,814	-5.4

Note: For footnotes see end of table.

**TABLE 7 - JOB SEEKERS RECEIVING NEWSTART ALLOWANCE AND YOUTH ALLOWANCE
(OTHER) BY AREA SUPPORT OFFICE AND CUSTOMER SERVICE CENTRE**

<i>Area Support Office and Customer Service Centre</i>	February 2007	March 2007	Variation	
			February - March Number	Per cent
WESTERN AUSTRALIA				
Albany	791	746	-45	-5.7
Armadale	831	769	-62	-7.5
Bunbury	1,468	1,435	-33	-2.2
Busselton (3)	287	274	-13	-4.5
Cannington	1,215	1,131	-84	-6.9
Carnarvon	232	220	-12	-5.2
Centrelink City (2)	0	0	0	%
Christmas Island	11	11	0	%
Cocos Island	54	52	-2	%
Collie	4	4	0	%
Esperance	280	263	-17	-6.1
Fremantle	1,243	1,113	-130	-10.5
Geraldton	1,342	1,254	-88	-6.6
Gosnells	787	736	-51	-6.5
Innaloo	1,398	1,300	-98	-7.0
Joondalup	1,105	1,041	-64	-5.8
Kalgoorlie	542	535	-7	-1.3
Karratha	277	270	-7	-2.5
Mandurah	1,059	1,018	-41	-3.9
Midland	1,582	1,514	-68	-4.3
Mirrabooka	1,491	1,353	-138	-9.3
Morley	1,460	1,314	-146	-10.0
Northam	491	475	-16	-3.3
Rockingham (1)	1,341	1,301	-40	-3.0
South Hedland	371	325	-46	-12.4
Spearwood	845	784	-61	-7.2
Victoria Park	1,550	1,430	-120	-7.7
Warwick Grove	679	644	-35	-5.2
Other (a)	451	368	-83	-18.4
Total	23,187	21,680	-1,507	-6.5

Note: For footnotes see end of table.

(1). As of 30 May 2003 Kwinana became a sub office of Rockingham.

(2). From 30 June 2003 processes at Centerlink City, formerly known as Milligan Street, became limited to forms lodgement and quick general enquiries only.

(3). On 14 February 2005 Busselton was established as a full-time office. Recipients previously serviced by Bunbury will be serviced in Busselton.

**TABLE 7 - JOB SEEKERS RECEIVING NEWSTART ALLOWANCE AND YOUTH ALLOWANCE
(OTHER) BY AREA SUPPORT OFFICE AND CUSTOMER SERVICE CENTRE**

<i>Area Support Office and Customer Service Centre</i>	February 2007	March 2007	Variation	
			February - March Number	Per cent
TASMANIA				
Bridgewater	591	568	-23	-3.9
Burnie	1,641	1,522	-119	-7.3
Devonport	1,858	1,708	-150	-8.1
Glenorchy	1,943	1,849	-94	-4.8
Hobart	1,782	1,678	-104	-5.8
Huonville	529	512	-17	-3.2
Launceston	3,675	3,416	-259	-7.0
Mowbray	0	0	0	%
Rosny Park	1,069	1,016	-53	-5.0
Sorell	543	508	-35	-6.4
Other (a)	52	47	-5	%
Total	13,683	12,824	-859	-6.3
NORTH AUSTRALIA				
Alice Springs	1,231	1,292	61	5.0
Alice Springs (Remote)*	0	0	0	%
Broome	318	316	-2	-0.6
Casuarina	911	871	-40	-4.4
SSC Nth Australia (1)	2	2	0	%
Derby	100	102	2	2.0
Katherine	612	564	-48	-7.8
Knuckey Street	578	547	-31	-5.4
Kununurra	173	176	3	1.7
Nhulunbuy	219	226	7	3.2
Palmerston	802	812	10	1.2
Tangentyere	242	225	-17	-7.0
Tennant Creek	159	153	-6	-3.8
Tennant Creek (Remote)	44	56	12	%
Other (a)	660	722	62	9.4
Total	6,051	6,064	13	0.2

Note: For footnotes see end of table.

* In October 2005, region codes were transferred from Alice Springs (Remote) CSC to Alice Springs CSC.

(1). On 1 July 2006, Casuarina YSC became SSC (Student Services Centre) Nth Australia.

**TABLE 7 - JOB SEEKERS RECEIVING NEWSTART ALLOWANCE AND YOUTH ALLOWANCE
(OTHER) BY AREA SUPPORT OFFICE AND CUSTOMER SERVICE CENTRE**

<i>Area Support Office and Customer Service Centre</i>	February 2007	March 2007	Variation	
			February - March Number	Per cent
<i>PACIFIC CENTRAL</i>				
Ballina	1,182	1,121	-61	-5.2
Beaudesert	380	350	-30	-7.9
Beenleigh	1,551	1,479	-72	-4.6
Biggera Waters	1,474	1,410	-64	-4.3
Browns Plains	1,332	1,297	-35	-2.6
Brunswick Heads	602	592	-10	-1.7
Byron Bay	680	676	-4	-0.6
Casino	681	642	-39	-5.7
Charleville	202	192	-10	-5.0
Coffs Harbour	2,889	2,708	-181	-6.3
Dalby	484	469	-15	-3.1
Goodna	1,120	1,085	-35	-3.1
Goondiwindi	350	343	-7	-2.0
Grafton	1,724	1,703	-21	-1.2
Inala	1,297	1,226	-71	-5.5
Ipswich	2,022	1,913	-109	-5.4
Lightning Ridge	181	179	-2	-1.1
Lismore	2,250	2,071	-179	-8.0
Moree	575	519	-56	-9.7
Murwillumbah	620	585	-35	-5.6
Narrabri	449	443	-6	-1.3
Nerang	1,564	1,482	-82	-5.2
Palm Beach	1,909	1,854	-55	-2.9
Roma	172	168	-4	-2.3
Southport	2,029	1,968	-61	-3.0
Stanthorpe	357	345	-12	-3.4
Toowoomba	2,215	2,099	-116	-5.2
Tweed Heads	1,485	1,405	-80	-5.4
Walgett	247	215	-32	-13.0
Warwick	489	465	-24	-4.9
Woodridge	1,877	1,757	-120	-6.4
Other (a)	29	31	2	%
Total	34,418	32,792	-1,626	-4.7

Note: For footnotes see end of table.

**TABLE 7 - JOB SEEKERS RECEIVING NEWSTART ALLOWANCE AND YOUTH ALLOWANCE
(OTHER) BY AREA SUPPORT OFFICE AND CUSTOMER SERVICE CENTRE**

<i>Area Support Office and Customer Service Centre</i>	February 2007	March 2007	Variation	
			February - March Number	Per cent
<i>CENTRELINK CALL CENTRES*</i>				
Adelaide	3	1	-2	%
Bendigo	0	0	0	%
Brisbane	4	3	-1	%
Bunbury	1	0	-1	%
Cairns	1	0	-1	%
Cardiff	0	0	0	%
Coffs Harbour	0	0	0	%
Geelong	1	1	0	%
Gosford	0	0	0	%
Hobart	0	2	2	%
Illawarra	0	2	2	%
Latrobe	2	1	-1	%
Liverpool	0	0	0	%
Maryborough	0	1	1	%
Moorabbin	0	0	0	%
Moreland	0	0	0	%
Newcastle	4	5	1	%
Perth	5	3	-2	%
Port Augusta	0	0	0	%
Port Macquarie	1	2	1	%
Sydney	0	0	0	%
Toowoomba	0	0	0	%
Townsville	2	0	-2	%
Tweed Heads	2	3	1	%
Warilla	0	0	0	%
Wendouree	0	0	0	%
Total	26	24	-2	%
NOT CODED TO AN AREA	27	22	-5	%
AUSTRALIA	370,965	353,178	-17,787	-4.8

(a) Recipients not coded to a Customer Service Centre.

% Monthly variations in percentage terms are not included where the Customer Service Centre has a population less than 100 in both of the reported months.

*Job seekers receiving NSA / YA (o) in the Centrelink Call Centres were previously counted in various Area Offices.

Note: The majority of figures in this publication are averages, and have been rounded. As a result, discrepancies may occur between sums of component items and totals. The discrepancies may also affect the calculation of the variations in Table 2, 3, 5 and 7.

**TABLE 8 - JOB SEEKERS RECEIVING NEWSTART ALLOWANCE AND YOUTH ALLOWANCE (OTHER)
FORTNIGHTLY EARNINGS (%) AND SEX (a), FORTNIGHT ENDING 23 MARCH 2007**

<i>Fortnightly Earnings</i>	Short-term job seekers	Long-term job seekers	Total job seekers
MALES			
Did not earn an income	83.4	80.1	81.6
Earned an income	16.6	19.9	18.4
Amount earned			
\$0.01-\$62.00	0.7	1.0	0.8
\$62.01-\$142.00	2.5	3.0	2.8
\$142.01-\$236.00	2.7	3.4	3.1
\$236.01-\$316.00	2.0	2.5	2.3
Over \$316.00	8.7	10.0	9.4
Total	100.0	100.0	100.0
<i>Job seekers receiving NSA and YA (other)</i>	101,511	115,483	216,994
FEMALES			
Did not earn an income	73.3	70.3	71.5
Earned an income	26.7	29.7	28.5
Amount earned			
\$0.01-\$62.00	1.1	1.3	1.2
\$62.01-\$142.00	3.3	3.6	3.5
\$142.01-\$236.00	3.9	4.5	4.2
\$236.01-\$316.00	3.1	3.5	3.3
Over \$316.00	15.4	16.7	16.2
Total	100.0	100.0	100.0
<i>Job seekers receiving NSA and YA (other)</i>	54,988	77,891	132,879
PERSONS			
Did not earn an income	79.8	76.2	77.8
Earned an income	20.2	23.8	22.2
Amount earned			
\$0.01-\$62.00	0.8	1.1	1.0
\$62.01-\$142.00	2.8	3.3	3.1
\$142.01-\$236.00	3.1	3.8	3.5
\$236.01-\$316.00	2.4	2.9	2.7
Over \$316.00	11.0	12.7	12.0
Total	100.0	100.0	100.0
<i>Job seekers receiving NSA and YA (other)</i>	156,499	193,374	349,873

(a) Total figures in this table are different from Tables 2 to 7 because of different methodologies applied. Tables 2 to 7 are based on averages of weekly figures while this table is based on point in time data. See Explanatory Notes for further information.

EXPLANATORY NOTES

Introduction

This publication provides monthly statistical information on DEWR labour market and related payments administered by Centrelink. These Explanatory Notes provide details of the scope and methodology of the publication, as well as the policy changes which have affected the data since the publication was introduced in December 1995 by the then Department of Social Security (which became FaCS in October 1998).

Prior to December 1995, this publication was titled the *Monthly Job Search and Newstart Allowance Statistics*.

Scope

The primary focus of the publication is to provide information on unemployed people on Newstart Allowance and Youth Allowance, with a particular focus on the total number of job seekers. The number of people on Mature Age Allowance, Partner Allowance and Widow Allowance are also reported.

Methodology

Data in this publication relate to the average number of people who are both eligible (eg. meet 'unemployed' qualification) and entitled (eg. meet income and assets criteria) to receive a payment calculated over a reference month. Averages are calculated using figures collected for each Friday throughout the reference month.

Table 1 provides information on the total number of unemployed people on Newstart Allowance and Youth Allowance. The Youth Allowance population is split into Youth Allowance (full-time students), Youth Allowance (Australian Apprentices) and Youth Allowance (other) categories. Numbers of people on Mature Age Allowance, Partner Allowance and Widow Allowance are also provided.

Tables 2 and 3 provide a summary of the Newstart Allowance and Youth Allowance (other) populations and show the derivation of the respective job seeker populations (see the reference to job seekers in the Comparability of Data section of these Explanatory Notes). These populations are added together to derive the total number of job seekers. Tables 4 to 8 provide information on the total job seeker population.

The earnings data in Table 8 is derived using a different methodology to that of the other tables in the publication. Table 8 is based on the combined population of job seekers who are eligible for and entitled to receive Newstart Allowance or Youth Allowance (other) at the end of the second last week in the month. Thus, the data obtained from this table will not be directly comparable with those calculated using monthly averages in other tables.

Payment History

Youth Allowance

From 1 July 1998 Youth Allowance was introduced to provide income support to young people, including students, those looking for work, and those who are sick. Youth Allowees may be undertaking full-time study, full-time job search or a combination of approved activities. Some young people will be exempt from the activity test because of their personal circumstances, eg. illness, homelessness or major personal crisis. The Youth Allowance replaced:

- AUSTUDY for 16-24 year olds (and certain 15 year olds);
- Newstart Allowance for 16-20 year olds (and certain 15 year olds);
- Youth Training Allowance for 16-17 year olds (and certain 15 year olds);
- Sickness Allowance for 16-20 year olds (and certain 15 year olds); and
- More-than-minimum rate Family Payment for secondary students aged 16-18 not getting AUSTUDY.

Youth Allowance recipients are subject to the parental means test. Under previous arrangements, unemployed people aged 18 to 20 were not subject to the parental means test, unlike 18 to 20 year old students.

Special provisions applied for 18 to 20 year olds who were already on Newstart or Sickness Allowance at the date of announcement of Youth Allowance, and who remained on payment when Youth Allowance commenced on 1 July 1998. This group were able to remain on their existing payment and retain their existing benefits.

Youth Allowance had a significant downward effect on Newstart Allowance numbers from July 1998 and total job seeker numbers due to the parental means test.

Newstart Allowance

From 1 July 1998, Newstart Allowance for 16-20 year olds (and certain 15 year olds) was replaced by Youth Allowance. Young people aged 18 to 20 years old who were on Newstart or Sickness Allowance at the date of announcement of Youth Allowance and when Youth Allowance commenced on 1 July 1998, were able to remain on Newstart Allowance.

From 20 September 1996, Job Search Allowance and Newstart Allowance were combined into one payment - Newstart Allowance - which was payable to eligible recipients aged 18 years and over and to some people who were in receipt of Job Search Allowance and aged under 18 at 31 December 1994 (see Job Search Allowance).

Prior to 20 September 1996, Newstart Allowance was payable to eligible persons over 18 years who had been registered as unemployed with the Commonwealth Employment Service (CES) for 12 months or more.

<i>Job Search Allowance</i>	<p>From 20 September 1996, the payment was combined with Newstart Allowance to form one payment called Newstart Allowance. All Job Search Allowance recipients were transferred to Newstart Allowance.</p> <p>Prior to 20 September 1996, Job Search Allowance was payable to eligible persons who had been registered as unemployed with the CES for up to 12 months. It was also payable to eligible persons who were in receipt of Job Search Allowance and under 18 years of age at 31 December 1994. Persons aged 15 to 18 years who were not receiving Job Search Allowance prior to 1 January 1995 commenced on Youth Training Allowance.</p>
<i>Sickness Allowance</i>	<p>From 17 March 1996, persons in receipt of Newstart Allowance or Youth Training Allowance who became temporarily incapacitated no longer transferred to Sickness Allowance after 13 weeks. This change had the effect of increasing total Newstart Allowance/Youth Training Allowance figures but did not affect job seeker figures as those recipients who were incapacitated were excluded from the Newstart and Youth Training job seeker populations.</p> <p>Under current arrangements, these recipients remain on their existing payments but are exempt from the activity test for the duration of their medical certificates. People who become unemployed because of illness, and those who suffer a potential loss of income due to sickness, are paid Newstart Allowance because they are unemployed.</p> <p>Sickness Allowance for 16 to 20 year olds (and certain 15 year olds) has now been replaced by Youth Allowance, which was introduced on 1 July 1998 (see Youth Allowance).</p>
<i>Partner Allowance</i>	<p>From 20 September 2003, Partner Allowance was closed to new claimants. People on Partner Allowance before this date can remain on the allowance while they remain 'current', that is retain eligibility and entitlement for the allowance.</p> <p>From 1 July 1995 Partner Allowance has only been granted to persons who are dependent partners of pensioners and allowees and who were born before 1 July 1955, have no dependent children and have little or no recent workforce experience. Other dependent partners have to qualify for an income support payment in their own right, such as Newstart Allowance.</p> <p>Partner Allowance was introduced in September 1994, and was paid to partners of persons receiving Job Search Allowance, Newstart Allowance, Sickness Allowance or Special Benefit if certain eligibility criteria were satisfied.</p>
<i>Youth Training Allowance</i>	<p>Youth Training Allowance was replaced by Youth Allowance on 1 July 1998 (see Youth Allowance).</p> <p>From 1 January 1995, eligible persons aged under 18 years who were new entrants to the job search pool were paid Youth Training Allowance. (People who were in receipt of Job Search</p>

Allowance and aged under 18 years at 31 December 1994 continued to be paid Job Search Allowance. From 20 September 1996, those young persons still being paid Job Search Allowance were transferred to Newstart Allowance.)

Widow Allowance Widow Allowance, introduced on 1 January 1995, is payable to females aged 50 years or over who have become widowed, divorced or separated since turning 40 years (50 prior to 20 March 1997), if they meet a number of other criteria relating to current marital status and recent work experience. This has had a slight downwards effect on Newstart Allowance numbers from January 1995.

Mature Age Allowance From 20 September 2003, Mature Age Allowance was closed to new claimants. People on Mature Age Allowance before this date can remain on the allowance while they remain 'current', that is retain eligibility and entitlement for the allowance.

From 1 July 1996, the qualification conditions for Mature Age Allowance changed for new claimants. The requirement for 12 months prior receipt of income support was reduced to 9 months for people transferring from Newstart Allowance and removed entirely for people transferring from non-activity tested payments. The requirement to have been registered as unemployed for 9 months was replaced with a requirement to have no recent workforce experience. Reporting of these new claimants commenced from September 1996.

Mature Age Allowance was introduced on 24 March 1994, and was paid to long-term unemployed persons aged 60 years and over (but below Age Pension age) who had been receiving income support for 9 months or more and who were eligible for Newstart Allowance. The introduction of Mature Age Allowance had a downwards effect on Newstart Allowance numbers from April 1994 until September 2003.

Comparability of Data

There have been significant changes to the data presented in this publication due to a number of events. The main changes are:

- the method of counting recipients;
- the inclusion of some CDEP recipients in the total recipient numbers;
- the introduction of Youth Allowance in July 1998;
- the way 'job seeker' is defined; and
- the way duration is calculated.

People using this data to construct time series should note the following comments.

Definition of Recipient From July 2002, FaCS introduced a new method to more accurately measure the number of people receiving labour market and related payments. For those receiving labour market and related payments, their eligibility and entitlement status is administered by a payment system called Newstart Common Platform System. Within this system recipients who are both eligible and entitled to receive a payment have a determination

status of 'current'. The new method therefore counts these 'current' recipients.

The old method of counting recipients was specified to include all paid recipients - those who received a payment within a given fortnight. As compiled, however, this count excluded, from mid 1998, recipients who received a 'one-off' payment. These can occur, for instance, when a normal payment is interrupted (eg. payment is cancelled and then restored within that pay period) and a portion of the normal payment is paid.

The time series in Tables 1 and 4 reflect the revised method, as does the remainder of the publication. Revised historical data for these time series from May 1998 to June 2002 can be found in the July 2002 publication.

From July 2003 FaCS introduced a more sustainable methodology for this revised recipient count. Due to limitations in available data sources in 2002, the revised recipient count had to be derived through a complicated process. This more sustainable methodology resulted in slight differences from the recipient numbers used in previous editions.

*Community Development
Employment Projects
(CDEP)* From 20 March 2000, eligible participants in CDEP started receiving CDEP participant supplement and other add-ons, such as rent assistance, as part of income support payments. This added a number of new recipients to those who are normally eligible for payments reported in this publication.

*Introduction of
Youth Allowance* The sum of the number of Newstart Allowees and Youth Training Allowees prior to July 1998 is broadly comparable with the sum of Newstart Allowees and Youth Allowees (other) after July 1998. There are two main problems in comparing these two series. The first is the exclusion of some 18 to 20 year old unemployed people due to the application of the Youth Allowance parental means test (see the Youth Allowance section under Payment History). The second is the inclusion of Sickness Allowees in the Youth Allowance (other) population.

There is greater comparability between total Newstart Allowance and Youth Training Allowance job seekers prior to July 1998 and total Newstart Allowance and Youth Allowance (other) job seekers after July 1998. This is because the Sickness Allowance group is excluded from the job seeker total. The problem, however, of the exclusion of some recipients through the application of the Youth Allowance parental means test still remains.

Job seekers Prior to July 1998, the job seeker category was defined by excluding all Newstart Allowees who did not receive a payment, recipients who were incapacitated, and those receiving a payment who were undertaking training. Some people who were not required to engage in job search were classified as job seekers, including people undertaking full-time voluntary work, people on jury duty and pregnant women around the time of the birth of their child.

From July 1998, the definition of job seekers has been placed on a sounder conceptual basis. It is now derived for Newstart Allowance and Youth Allowance (other) recipients by excluding all people who did not receive a payment due to their own and/or their partner's income, or where applicable, parental income, and all those known not to be required to search for work. People receiving Intensive Support Customised Assistance under Job Network arrangements are classified as job seekers although they may not always be undertaking job search. These people negotiate their activity agreement with their Job Network member.

The total number of job seekers (comparable to pre-July 1998 estimates) is calculated by adding together the number of job seekers in receipt of Newstart Allowance and Youth Allowance (other) - see the Explanatory Notes on *Youth Allowance*.

Duration

Following system changes in May 1998, duration has been defined according to the time a recipient spends on income support - short-term recipients are those who have been on income support for up to 12 months and long-term recipients are those who have been on income support for 12 months or more.

Prior to 1998, duration was defined according to the time a recipient was registered as unemployed - short-term recipients were people who were registered as unemployed for up to 12 months and long-term recipients were people who were registered for 12 months or more.

Closure of Mature Age and Partner Allowances

From 20 September 2003, Mature Age Allowance and Partner Allowance were closed to new claimants. People on these allowances before this date can remain on that allowance while they remain 'current', that is retain eligibility and entitlement for the allowance. The majority of people who would previously have claimed these payments will now claim Newstart Allowance.

Symbols

n.a. not available
 .. not applicable

GLOSSARY

Activity test status	The activity that a Newstart Allowance or Youth Allowance (other) recipient has agreed to undertake in order to meet the activity test. To satisfy the activity test recipients must be actively seeking and willing to take up work or undertaking activities to improve their employment prospects.
Age	Age in years at time of data collection.
Area Support Office	A Centrelink office that supports a set of Customer Service Centres for a specified area. These are generally not confined to State boundaries.
Centrelink Youth Service Centre	A Centrelink Youth Service Centre consists of specialised staff who provide young people with improved access to Government services and income support. This is done by offering a mainstream service, as well as specialist case management to help access educational, labour market, job search, housing, health and general welfare assistance; and by providing a regular FaCS visiting service to youth via hostels, refuges and voluntary agencies.
Community Development Employment Projects (CDEP)	<p>The CDEP scheme is a programme funded currently by DEWR and in the past by the Aboriginal and Torres Strait Islander Commission (ATSIC). The scheme enables Aboriginal and Torres Strait Islander community councils and other approved Aboriginal and Torres Strait Islander groups to offer work to community members in activities that assist individuals in acquiring skills which benefit the community, develop business enterprises and/or lead to unsubsidised employment. The scheme also aims to develop management and business skills in an environment conducive to the principles of self-determination.</p> <p>The CDEP Participant Supplement (CPS) is payable to eligible CDEP participants. It can be paid fortnightly or as a 12 weekly payment.</p>
Customer Service Centre	A Customer Service Centre set within a particular region that provides FaCSIA, DEWR and other payments and related information and services to recipients. Customer Service Centres are managed by Area Support Offices.
Did not receive a payment	Persons who did not receive a payment due to their own income and/or that of their partner, or parents, where applicable. This group is often referred to as 'zero paid'.
Eligibility and payment status	Refer to the Methodology entry in the Explanatory Notes.
Fortnightly earnings	Amount of income earned, derived, or received by a person for the person's own use or benefit in the previous fortnight.
Incapacitated	A person on Newstart Allowance or Youth Allowance (other) who has an activity test status indicating they are temporarily ill or incapacitated. Refer to the entry for Sickness Allowance in the Explanatory Notes.

Job seekers	A person on Newstart Allowance or Youth Allowance (other) who would usually be engaged in jobsearch. See Explanatory Notes for definition and history.
Job Search Allowance (JSA)	Up to 20 September 1996, Job Search Allowance was payable to CES eligible persons who had been registered as unemployed with the CES for up to 12 months. From 20 September 1996, the payment was combined with Newstart Allowance to form one payment called Newstart Allowance. See Explanatory Notes for history.
Long-term recipients	Persons on Newstart Allowance or Youth Allowance who have been receiving income support for 12 months or more. Duration of long-term recipients can be reset to zero if they exited from payments for more than 13 weeks.
Mature Age Allowance (MAA)	From 20 September 2003, Mature Age Allowance was closed to new claimants. People on Mature Age Allowance before this date can remain on the allowance while they remain 'current', that is retain eligibility and entitlement for the allowance. Mature Age Allowance, a non-activity-tested payment, is payable to unemployed people aged 60 years and over (but below Age Pension age) with little or no recent workforce experience who meet certain requirements for previous receipt of income support. See Explanatory Notes for history.
Newstart Allowance (NSA)	Newstart Allowance is payable to eligible unemployed persons aged 21 years and over (but below Age Pension age) who satisfy the activity test. See Explanatory Notes for history.
Newstart Common Platform System (NCP)	The Newstart Common Platform System (NCP) was introduced in May 1998. The NCP administers all labour market and related payments. This includes primary payments such as Newstart Allowance, Youth Allowance, Mature Age Allowance, Widow Allowance and Partner Allowance. Other payments on the NCP include Special Benefit, Sickness Allowance, Exceptional Circumstances Relief, Farm Help and Austudy.
Partner Allowance (PA)	<p>From 20 September 2003, Partner Allowance was closed to new claimants. People on Partner Allowance before this date can remain on the allowance while they remain 'current', that is retain eligibility and entitlement for the allowance.</p> <p>Partner Allowance, a non-activity-tested payment, is payable to persons who are dependent partners of pensioners and allowees and who were born before 1 July 1955, have no dependent children and have little or no recent workforce experience. See Explanatory Notes for history.</p>
Short-term recipients	Persons on Newstart Allowance or Youth Allowance who have been receiving income support for less than 12 months. Duration of short-term recipients can be reset to zero if they exited from payments for more than 6 weeks.
States	States and Territories of Australia derived from the postcode of the recipient's residence as held on the Centrelink payment system.

Widow Allowance (WA)	<p>From 1 July 2005 Widow Allowance was closed to new claimants, unless the woman was born on or before 1 July 1955.</p> <p>Widow Allowance, a non-activity tested payment, is payable to females aged 50 years or over who have become widowed, divorced or separated since turning 40 years if they have little or no recent work experience and meet a number of other criteria relating to current marital status. See Explanatory Notes for history.</p>
Youth Training Allowance (YTA)	<p>From 1 January 1995 eligible persons aged under 18 years who were registered as unemployed with the CES were paid Youth Training Allowance. From 1 July 1998, Youth Training Allowance was replaced by Youth Allowance. See Explanatory Notes for history.</p>
Youth Allowance (YA)	<p>Youth Allowance is payable to eligible full-time students aged 16 to 25 years, and to eligible unemployed persons aged 16 to 20 years who satisfy the activity test. Note, there are certain exceptions for some 15 and 25 year olds. See Explanatory Notes for history.</p> <p>Youth Allowees may be undertaking full-time study, full-time job search or a combination of approved activities. Some young people will be exempt from the activity test because of their personal circumstances, eg. illness, homelessness or major personal crisis. See the Explanatory Notes for more information.</p>
Youth Allowance (other)	<p>Youth Allowance recipients who are not full-time students or full-time Australian Apprentices.</p>
Zero paid	<p>See 'Did not receive a payment'.</p>

APPENDIX

COMPARISONS BETWEEN DEWR UNEMPLOYMENT LABOUR MARKET PAYMENT NUMBERS AND ABS LABOUR FORCE UNEMPLOYMENT STATISTICS

Official statistics	Official unemployment statistics are released by the Australian Bureau of Statistics (ABS). The ABS uses definitions recommended by the International Labour Office which have been accepted internationally as the most appropriate for the compilation of official statistics of unemployment.
ABS definition	The ABS unemployment statistics measure the number of persons who, for a particular reference period, did not undertake any paid work, were actively looking for work and were available to start work.
DEWR Unemployment Labour Market Payment Statistics	The labour market payment statistics give the number of persons who are both eligible and entitled to receive Newstart Allowance or Youth Allowance (other). The criteria for receipt of these payments do not match those the ABS uses to determine whether a person is classed as unemployed or employed for statistical purposes.
Differences	Care should be taken when comparing the ABS labour force and DEWR labour market payment data. There are a number of reasons why the two series cannot be directly compared.
<i>Duration</i>	<p>Both DEWR and the ABS classify long-term duration as over 12 months, but use substantially different definitions of duration:</p> <p>DEWR measures duration of income support. This includes not just time on unemployment benefits but time on any income support payment.</p> <p>The ABS measures length of time unemployed using their unemployment definition.</p> <p>DEWR unemployed recipients can have breaks without payment for up to 25 weeks but still be classified as long-term income support recipients:</p> <ul style="list-style-type: none">• Recipients who do not receive a payment due to their earnings can have up to 12 weeks without a payment before they are automatically cancelled. This reduces disincentives to accept short-term work.• Long-term recipients can have another 13 weeks off payment after payment is cancelled and still keep their long-term status if they return to income support. This means they keep access to assistance such as the Employment Entry Payment and the higher payment rate for recipients over 60.

For the ABS statistics, any hours of work for a period as short as two weeks count as a break from unemployment and so are enough to reset a person's unemployment duration.

The difference between these two concepts, together with the fact that DEWR recipients are able to have ongoing part-time work (see 'employment' below) mean that many unemployed recipients remain classified by DEWR as long-term recipients when they would be classified as short-term unemployed under the ABS definition.

Seasonal adjustment The ABS produces a seasonally adjusted series. The DEWR labour market payment numbers data are not seasonally adjusted.

Classification The ABS classifies a person as unemployed if he or she is aged 15 years and over, was not employed during the week before the interview, has actively looked for full-time or part-time work and is available to start work. From February 2004, people who had not actively looked for work because they were waiting to start a job within four weeks are also classified as unemployed.

The Newstart Allowance and Youth Allowance (other) series generally count people who are eligible for and entitled to receive a payment between the ages of 15 years and 64 years in the case of men and 15 to 63 years in the case of women.

Employment Newstart Allowance and Youth Allowance (other) recipients may be employed part-time, but within an income test limit; the ABS classifies a person as "employed" if, among other things, he or she has worked for one hour or more during the survey period.

Timing The timing of collections of the series are different:

- DEWR reports monthly average numbers of people both eligible for and entitled to receive Newstart Allowance and Youth Allowance (other). These monthly averages are calculated using figures collected for each Friday throughout the reference month.
- ABS numbers are based on a sample interview survey of occupants of selected dwellings covering around 0.5% of the total Australian population. These persons are interviewed during the two weeks beginning the Monday between the 6th and 12th of each month and the information obtained is based on the week before the interview takes place.

Treatment of partners The ABS series includes unemployed persons whose spouse is working, irrespective of income, whereas Newstart Allowance and Youth Allowance (other) recipients are subject to an income and assets test for themselves and their spouse.

Pensioners The ABS series includes persons being paid a pension but looking for work (eg. sole parents in receipt of Parenting Payments looking for work).

<i>Non job seekers</i>	The overall Newstart Allowance and Youth Allowance (other) series includes persons who are not required to undertake jobsearch. These persons are separately identified in Tables 2 and 3, and have then been excluded in subsequent tables. These people may be undertaking training, the development of self-employment opportunities, full-time voluntary work or a combination of voluntary and part-time work which excludes them from jobsearch obligations. They may also be incapacitated or have another temporary exemption from jobsearch.
<i>Waiting periods</i>	The ABS series includes persons who are serving a waiting period before being granted Newstart Allowance or Youth Allowance (other), or whose allowance was deferred.
<i>Survey</i>	The ABS figures are derived from a Labour Force Survey which is a sample survey, whereas the DEWR statistics are a complete count of those both eligible for and entitled to receive Newstart Allowance and Youth Allowance (other).

FOR MORE INFORMATION

Labour market information

Other statistics on recipients of labour market related payments are available on request.

In addition to Newstart and Youth Allowances, statistics are also available on Partner Allowance, Mature Age Allowance and Widow Allowance.

For publication distribution enquiries email:
MI.WORKINGAGE.PAYMENTS@centrelink.gov.au

Written correspondence concerning this publication or statistics on labour market related payments should be addressed to:

Director
Working Age Payments Performance and Monitoring Section
Department of Employment and Workplace Relations
PO Box 9879
Canberra Mail Centre ACT 2601

or forwarded via facsimile to (02) 6275 3328.

Other recipient information

Statistics relating to other recipients are also available, including recipient numbers and characteristics for the various FaCSIA pensions, benefits and family payments.

Other statistical outputs

The following statistical outputs are available on request:

Department of Families, Community Services and Indigenous Affairs (FaCSIA)
Income Support Customers: a Statistical Overview
1996, 1997, 1998, 1999, 2000, 2001, 2002, 2003 and 2004.