



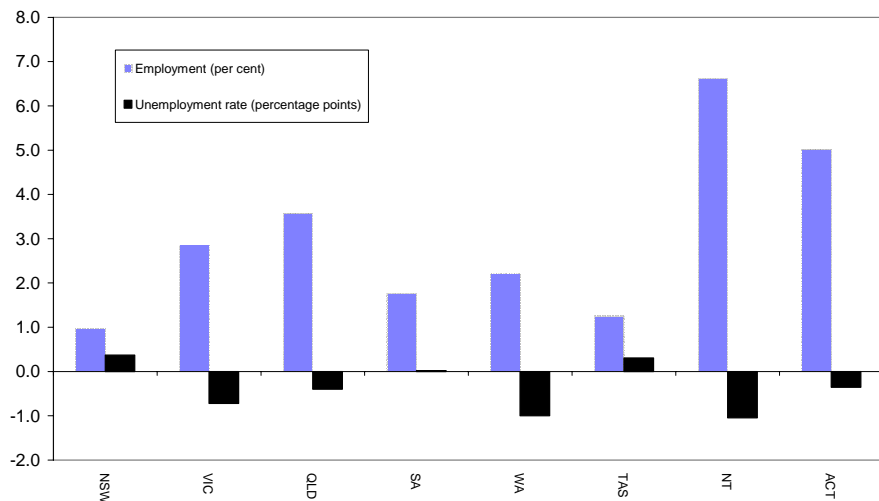
AUSTRALIAN REGIONAL LABOUR MARKETS SEPTEMBER QUARTER 2006

MAIN FINDINGS

State/territory labour market developments

Employment rose in all States and Territories over the year to the September quarter 2006. The largest increase (in percentage terms) was recorded in the Northern Territory (up by 6.6 per cent), followed by the Australian Capital Territory (up by 5.0 per cent) and Queensland (up by 3.6 per cent). The unemployment rate fell in the majority of the States and Territories. The largest falls over the year were recorded in Western Australia and the Northern Territory (both down by 1.0 percentage points, to 3.3 per cent and 3.4 per cent respectively).

CHANGE IN EMPLOYMENT AND THE UNEMPLOYMENT RATE SEPTEMBER QUARTER 2005 TO SEPTEMBER QUARTER 2006



Developments at the ABS Labour Force Region Level

Employment increased in approximately 68 per cent of regions over the year to the September quarter 2006, while 59 per cent of regions recorded a reduction in their unemployment rate. A number of regions have recorded strong employment growth as well as a significant reduction in their unemployment rate over the last 12 months. In particular:

- Murray-Murrumbidgee in NSW recorded a 10.6 per cent increase in employment while the unemployment rate fell by 2.4 percentage points to 3.5 per cent;
- employment in South West Perth rose by 9.4 per cent while the unemployment rate fell by 2.2 percentage points to 2.2 per cent; and
- Far North Queensland recorded a 5.5 per cent increase in employment while the unemployment rate fell by 1.7 percentage points to 4.6 per cent.

LABOUR FORCE STATUS BY ABS LABOUR FORCE REGIONS
SEPTEMBER QUARTER 2006
Not Seasonally Adjusted

State/Region	Employed		Unemployed		Unemployment rate		Employment rate (a)		Participation rate	
	'000	Annual change	'000	Annual change	%	Annual change (% pts)	%	Annual change (% pts)	%	Annual change (% pts)
AUSTRALIA	10 257.2	228.4	495.0	-16.7	4.6	-0.3	72.5	0.8	64.8	0.4
<i>Metropolitan Australia (b)</i>	<i>6458.5</i>	<i>110.9</i>	<i>293.8</i>	<i>-7.4</i>	<i>4.4</i>	<i>-0.2</i>	<i>73.1</i>	<i>0.4</i>	<i>65.6</i>	<i>0.2</i>
<i>Non-metropolitan Australia (b)</i>	<i>3798.7</i>	<i>117.5</i>	<i>201.2</i>	<i>-9.3</i>	<i>5.0</i>	<i>-0.4</i>	<i>71.7</i>	<i>1.4</i>	<i>63.6</i>	<i>0.8</i>
New South Wales	3298.9	31.9	180.1	15.2	5.2	0.4	70.6	0.0	63.2	0.3
<i>Sydney</i>	<i>2169.5</i>	<i>5.8</i>	<i>104.9</i>	<i>11.6</i>	<i>4.6</i>	<i>0.5</i>	<i>72.3</i>	<i>-0.4</i>	<i>65.3</i>	<i>-0.1</i>
Inner Sydney and Inner Western Sydney	270.6	3.4	9.9	-1.9	3.5	-0.7	74.2	1.8	67.9	-0.2
Inner Sydney	187.9	6.3	7.0	-1.6	3.6	-0.9	75.6	2.4	72.0	1.2
Eastern Suburbs	131.1	-5.0	4.1	-0.3	3.0	-0.1	75.1	-1.0	63.1	-3.0
St George-Sutherland	231.0	-6.8	8.7	0.4	3.6	0.3	73.9	-2.4	64.9	-2.4
Canterbury-Bankstown	132.5	-2.1	9.4	3.6	6.6	2.5	61.6	-3.7	55.2	0.0
Fairfield-Liverpool/ Outer South Western Sydney	271.7	-15.1	25.7	7.8	8.6	2.8	66.1	-3.2	63.7	-2.2
Fairfield-Liverpool	148.6	-17.8	16.8	5.7	10.1	3.9	61.5	-4.8	58.6	-4.8
Central Western Sydney	140.5	-1.3	7.8	1.8	5.3	1.2	65.8	-2.3	59.5	-0.4
North Western Sydney	300.5	5.8	14.9	-1.4	4.7	-0.5	71.7	0.2	67.7	0.3
Lower Northern Sydney	166.4	-6.8	6.7	3.2	3.9	1.9	75.8	-1.3	66.9	-2.0
Central Northern Sydney	240.0	16.9	5.4	-3.1	2.2	-1.5	79.6	3.7	71.8	3.4
Northern Beaches	137.1	-1.6	3.2	-0.6	2.3	-0.4	82.5	0.7	70.7	-1.8
Gosford-Wyong	148.1	18.4	9.0	2.1	5.7	0.7	72.6	3.8	63.5	7.8
<i>Balance of New South Wales</i>	<i>1129.4</i>	<i>26.1</i>	<i>75.2</i>	<i>3.6</i>	<i>6.2</i>	<i>0.1</i>	<i>67.7</i>	<i>0.8</i>	<i>59.5</i>	<i>0.9</i>
Hunter	276.9	0.1	16.4	1.0	5.6	0.3	67.2	-1.4	59.7	-0.3
Newcastle	232.1	-1.8	14.1	1.3	5.7	0.5	67.0	-2.0	59.8	-0.7
Illawarra and South Eastern	263.9	-0.3	23.5	6.1	8.2	2.0	64.5	-2.0	58.2	0.6
Illawarra	170.8	-3.1	18.0	4.3	9.5	2.2	62.2	-3.4	56.7	-0.2
Wollongong	123.6	2.2	12.0	2.9	8.8	1.8	63.9	-3.0	60.2	1.7
Richmond-Tweed/ Mid-North Coast	210.5	17.5	15.8	-2.7	7.0	-1.8	64.6	6.1	54.4	3.0
Northern/ Far West-North Western/ Central West	234.8	-5.0	14.5	2.2	5.8	0.9	70.2	-1.0	61.2	-1.3
Murray-Murrumbidgee	143.2	13.7	5.1	-3.0	3.5	-2.4	76.5	5.8	68.9	4.3
Victoria	2543.2	70.7	123.0	-16.3	4.6	-0.7	72.5	1.1	64.6	0.5
<i>Melbourne</i>	<i>1865.6</i>	<i>29.1</i>	<i>86.3</i>	<i>-9.2</i>	<i>4.4</i>	<i>-0.5</i>	<i>72.4</i>	<i>0.3</i>	<i>64.9</i>	<i>-0.2</i>
Outer Western Melbourne	291.8	-0.4	18.1	-0.7	5.9	-0.2	70.3	0.4	64.5	-1.0
North Western Melbourne	132.2	9.0	7.3	-2.5	5.2	-2.1	66.6	2.2	60.4	2.1
Inner Melbourne	161.3	0.1	8.0	1.7	4.7	1.0	76.7	-0.5	71.7	0.0
North Eastern Melbourne	228.9	6.2	8.7	-2.4	3.7	-1.1	72.0	1.1	65.0	0.2
Inner Eastern Melbourne	316.1	13.9	13.5	-1.6	4.1	-0.7	73.5	1.0	64.0	1.6
Southern Melbourne	210.6	-1.1	8.9	1.8	4.1	0.8	74.8	-2.1	64.0	-0.6
Outer Eastern Melbourne	216.3	3.3	8.6	-2.1	3.8	-0.9	77.6	2.8	68.6	-0.5
South Eastern Melbourne	177.1	0.0	7.5	-0.4	4.0	-0.2	66.8	-1.8	62.1	-0.9
Mornington Peninsula	131.4	-2.0	5.7	-3.1	4.1	-2.0	72.5	-1.2	65.2	-3.4
<i>Balance of Victoria</i>	<i>677.5</i>	<i>41.6</i>	<i>36.7</i>	<i>-7.1</i>	<i>5.1</i>	<i>-1.3</i>	<i>72.8</i>	<i>3.5</i>	<i>63.6</i>	<i>2.3</i>
Barwon-Western District	186.0	16.5	11.9	0.9	6.0	-0.1	74.1	3.9	65.6	5.0
Central Highlands-Wimmera	92.1	-8.1	6.9	1.0	7.0	1.4	70.4	-4.7	60.9	-5.2
Loddon-Mallee	135.7	15.6	6.9	-0.8	4.8	-1.2	73.4	5.6	65.9	6.1
Goulburn-Ovens-Murray	152.0	14.3	6.4	-2.2	4.1	-1.8	74.1	4.7	66.3	4.2
All Gippsland	111.7	3.2	4.5	-6.1	3.9	-5.0	70.3	5.5	57.4	-2.2

(a) The employment rate is the proportion of the working age (15-64) population who are employed.

(b) The ABS defines metropolitan as those regions located within the state capital cities. Non-metropolitan is defined as those regions located outside the

LABOUR FORCE STATUS BY ABS LABOUR FORCE REGIONS
SEPTEMBER QUARTER 2006
Not Seasonally Adjusted

State/Region	Employed		Unemployed		Unemployment rate		Employment Rate (a)		Participation rate	
	'000	Annual change	'000	Annual change	%	Annual change (% pts)	%	Annual change (% pts)	%	Annual change (% pts)
Queensland	2074.8	71.5	94.3	-5.5	4.3	-0.4	74.9	1.4	67.3	0.6
Gold Coast	248.8	15.9	10.8	2.1	4.2	0.6	75.5	2.0	66.2	3.3
<i>Brisbane</i>	<i>978.0</i>	<i>39.0</i>	<i>41.8</i>	<i>-2.3</i>	<i>4.1</i>	<i>-0.4</i>	<i>76.1</i>	<i>1.8</i>	<i>69.1</i>	<i>1.0</i>
Brisbane City Inner Ring	257.5	11.5	6.0	-2.4	2.3	-1.0	80.1	2.1	72.7	1.0
Brisbane City Outer Ring	299.0	7.2	12.7	-1.7	4.1	-0.6	75.6	1.9	67.0	-0.3
South and East Brisbane Balance	206.0	17.7	11.6	2.1	5.3	0.5	74.6	2.7	70.6	5.0
North and West Brisbane Balance	215.6	2.6	11.5	-0.3	5.1	-0.2	73.8	0.6	66.7	-0.8
<i>Balance of Queensland</i>	<i>1096.8</i>	<i>32.5</i>	<i>52.5</i>	<i>-3.2</i>	<i>4.6</i>	<i>-0.4</i>	<i>73.8</i>	<i>1.1</i>	<i>65.8</i>	<i>0.2</i>
South and East Moreton	238.1	10.4	9.0	0.7	3.6	0.1	75.4	1.2	65.9	1.6
North and West Moreton	173.0	5.0	11.3	1.9	6.1	0.8	72.3	0.7	63.7	1.0
Wide Bay-Burnett	105.7	-2.0	7.3	-1.1	6.4	-0.8	63.6	-0.6	53.9	-2.8
Darling Downs-South West	131.0	2.6	5.5	0.2	4.0	0.1	74.2	-1.1	66.4	-0.1
Mackay-Fitzroy-Central West	191.2	6.8	7.7	-2.2	3.9	-1.2	75.7	2.1	69.7	0.1
Northern-North West	133.5	3.0	5.8	-0.7	4.1	-0.6	78.6	1.6	72.9	-0.5
Far North	124.3	6.5	5.9	-2.0	4.6	-1.7	74.6	3.3	67.9	0.9
South Australia	754.5	13.0	37.2	0.8	4.7	0.0	71.7	0.7	62.4	0.5
<i>Adelaide</i>	<i>558.7</i>	<i>12.4</i>	<i>28.9</i>	<i>-1.3</i>	<i>4.9</i>	<i>-0.3</i>	<i>71.9</i>	<i>0.8</i>	<i>62.6</i>	<i>0.6</i>
Northern Adelaide	168.6	1.1	11.5	-0.8	6.4	-0.5	68.3	0.0	62.9	-0.5
Western Adelaide	101.9	7.0	5.3	0.6	4.9	0.3	71.1	0.9	58.9	3.7
Eastern Adelaide	121.0	3.2	3.8	-0.4	3.1	-0.4	75.3	0.8	64.1	0.9
Southern Adelaide	167.2	1.1	8.3	-0.7	4.7	-0.4	74.1	1.8	63.5	-0.4
<i>Balance of South Australia</i>	<i>195.8</i>	<i>0.6</i>	<i>8.3</i>	<i>2.1</i>	<i>4.1</i>	<i>1.0</i>	<i>70.9</i>	<i>0.2</i>	<i>61.8</i>	<i>0.2</i>
Northern and Western SA	77.3	4.8	3.1	0.7	3.9	0.7	68.9	0.3	62.5	3.7
Southern and Eastern SA	118.4	-4.2	5.2	1.4	4.2	1.2	72.3	0.3	61.3	-2.0
Western Australia	1070.0	23.1	36.1	-10.5	3.3	-1.0	74.8	0.5	67.2	-0.4
<i>Perth</i>	<i>788.7</i>	<i>20.2</i>	<i>26.1</i>	<i>-6.6</i>	<i>3.2</i>	<i>-0.9</i>	<i>74.6</i>	<i>0.6</i>	<i>66.9</i>	<i>-0.1</i>
Central Metropolitan	70.3	-4.7	1.7	-0.2	2.4	-0.1	74.0	-2.3	64.8	-5.7
East Metropolitan	130.5	5.9	4.3	-1.2	3.2	-1.1	73.1	1.6	65.1	1.1
North Metropolitan	242.7	8.0	8.6	0.3	3.4	0.0	76.0	-0.7	69.0	1.1
South West Metropolitan	166.2	14.3	3.8	-3.3	2.2	-2.2	75.1	5.2	66.6	3.1
South East Metropolitan	179.1	-3.3	7.7	-2.1	4.1	-1.0	73.6	-1.5	66.4	-3.2
<i>Balance of Western Australia</i>	<i>281.3</i>	<i>2.9</i>	<i>10.0</i>	<i>-3.9</i>	<i>3.4</i>	<i>-1.3</i>	<i>75.4</i>	<i>0.3</i>	<i>68.3</i>	<i>-1.5</i>
Lower Western WA	143.9	-1.7	5.1	-2.8	3.4	-1.7	73.6	-1.8	64.9	-3.2
Remainder-Balance WA	137.4	4.6	4.9	-1.2	3.5	-0.9	77.4	2.6	72.1	0.4
Tasmania	222.4	2.8	15.4	1.0	6.5	0.3	67.6	0.7	60.5	0.5
Greater Hobart-Southern	110.2	3.9	6.2	-1.1	5.3	-1.1	67.8	1.7	59.8	1.0
<i>Greater Hobart</i>	<i>97.9</i>	<i>4.4</i>	<i>5.6</i>	<i>0.3</i>	<i>5.4</i>	<i>0.0</i>	<i>70.0</i>	<i>2.2</i>	<i>62.2</i>	<i>2.4</i>
Northern	62.9	-1.1	4.8	1.5	7.1	2.1	67.2	-2.2	61.1	-0.1
Mersey-Lyell	49.3	0.0	4.4	0.6	8.2	0.9	67.8	1.9	61.3	0.2
Northern Territory	103.0	6.4	3.6	-0.9	3.4	-1.0	71.8	2.6	70.5	1.7
Australian Capital Territory	190.4	9.1	5.1	-0.4	2.6	-0.4	81.5	2.7	74.7	2.5

(a) The employment rate is the proportion of the working age (15-64) population who are employed.

EXPLANATORY NOTES

Introduction

The regional labour market estimates presented in this brochure are three-month averages derived from the Australian Bureau of Statistics (ABS) Monthly Labour Force Survey. These estimates are not adjusted to take account of seasonal and other variations and can exhibit irregular movements. They should therefore be used with caution.

Related information

Users may wish to refer to the DEWR *Small Area Labour Markets, Australia* publication, which is available, free of charge, at <http://www.workplace.gov.au> (in PDF format), or as a printed booklet upon request. This publication contains quarterly estimates of unemployment rates and levels for approximately 1350 Statistical Local Areas.

Next issue

The next issue of *Australian Regional Labour Markets*, for the December quarter 2006, is expected to be released in late January 2007.

Contact details

This brochure was prepared by the Economic and Labour Market Analysis Branch, Department of Employment and Workplace Relations, Canberra. For further information on this brochure or related statistics, contact Rodney Trower in the Labour Market Analysis Section on (02) 6121 7901 or email rodney.trower@dewr.gov.au.

More detailed monthly national, state and regional labour force statistics are available from the ABS. For further information on ABS labour force statistics, go to the 'Labour' theme page at the ABS website (www.abs.gov.au), or contact Craig Blair on (02) 6252 6565.