

LABOUR MARKET SUMMARY

Western Australia

November 2006



Australian Government

Department of Employment and
Workplace Relations

(DEWR)

Employment: *the number of persons employed remained stable at 1,075,500*

Unemployment: *the trend unemployment rate remained stable at 3.4%
the number of unemployed persons increased by 1.6% to
39,400*

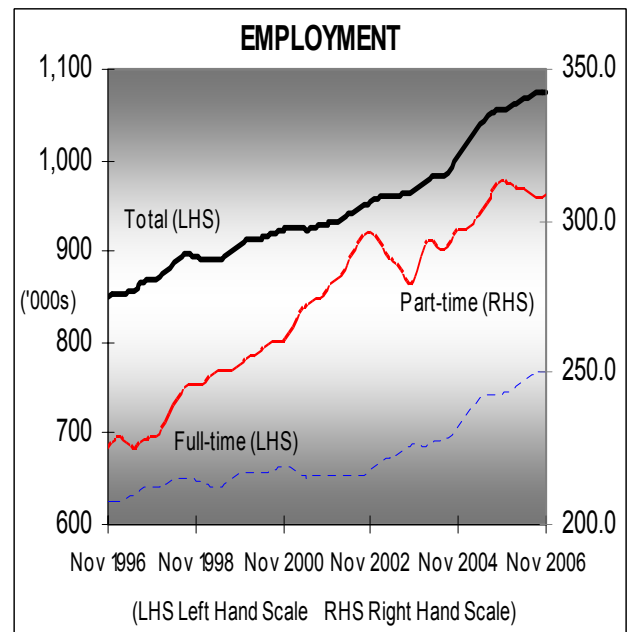
Participation Rate: *remained unchanged at 67.5%*

Employment

The number of persons employed increased by 400 over the month, a statistically insignificant increase. Since November 2005, it has increased by 1.9% or 19,600 to 1,075,500. Over the month, full-time employment remained stable at 767,600, while part-time employment increased by 0.1% to 307,900. Part-time employment comprises 28.6% of total employment in WA.

Over the month, total employment of males increased by 0.1% to 605,400, while full-time employment remained stable at 524,500. Total and full-time female employment both remained stable over the month at 470,100 and 243,200 respectively.

Total trend employment for Australia remained stable over the month at 10,289,400, with full-time employment increasing by 0.1% and part-time employment decreasing by 0.3%.

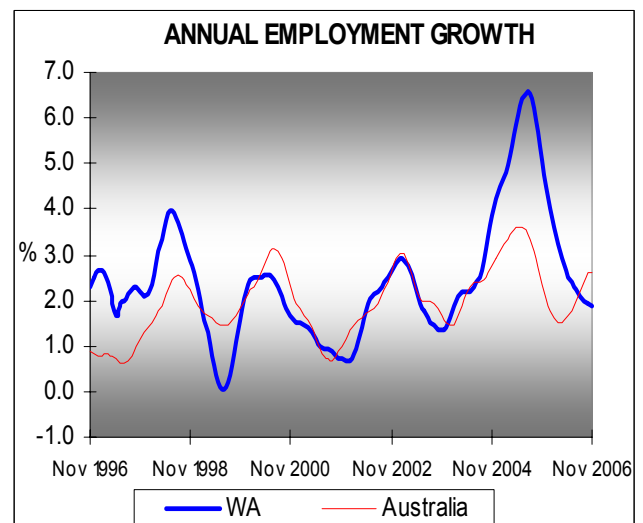


Employment Growth

The annual rate of employment growth in WA in November 2006 was 1.9%, the same rate as last month.

The level of full-time employment has increased by 3.3% over the year, while annual part-time employment has decreased by 1.5%. The employment growth comprised an annual increase in male employment of 2.1% and 1.5% for female employment.

Nationally, the annual rate of employment growth in November 2006 was 2.6%, the same rate as last month. Annual employment growth comprised a 2.8% increase for full-time and 2.1% for part-time employment.



Level 12
250 St Georges Tce
Perth WA

GPO Box 9879
Perth WA 6848

Tel: 08 9464 4159
Fax: 08 9464 4229
email:
rosalie.miles@dewr.gov.au

Note: This report uses Australian Bureau of Statistics (ABS) trend data which are revised each month.

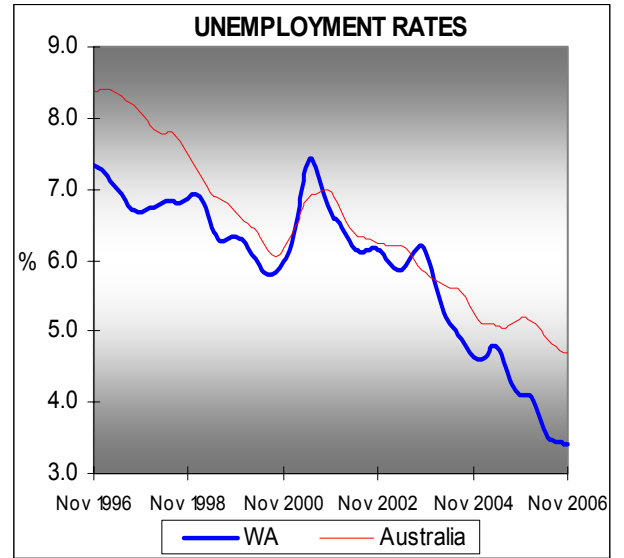
Unemployment - WA and Australia

The trend unemployment rate in WA for November 2006 remained stable at 3.4%. This is 0.7 percentage points lower than the rate in November 2005.

The number of unemployed persons decreased by 0.4% or 100 persons in November 2006 to 37,900. This was 16.2% or 7,300 less than the number in November 2005.

Nationally, the trend unemployment rate decreased by 0.6 percentage points to 4.6% in November 2006. This is 0.6 percentage points lower than in November last year. The national trend unemployment rate for those looking for full-time work in November 2006 also decreased by 0.1 percentage points to 4.6%.

The seasonally adjusted unemployment rate for WA decreased by 0.6 percentage points to 3.1% in November 2006.



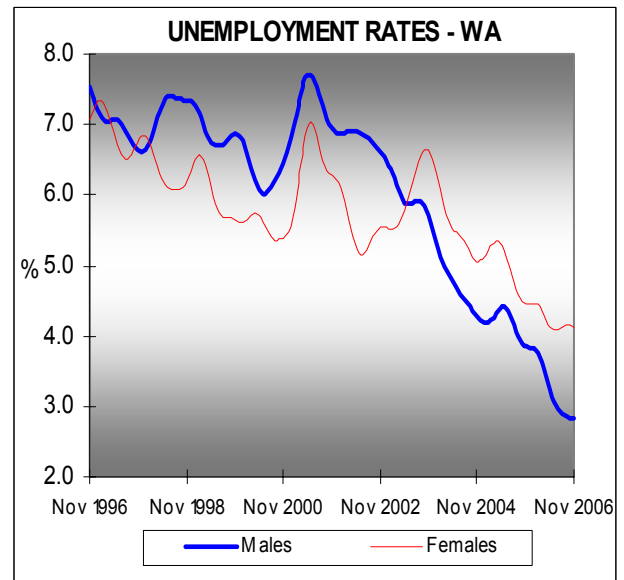
Unemployment WA – Males and Females

The trend unemployment rate for males remained at 2.8% over the month, however, it has fallen by 1.0 percentage points since November last year. It also remained stable over the month for females at 4.1%, however it decreased by 0.3 percentage points over the year.

The number of unemployed males decreased by 0.1% over the month and by 25.4% over the year to 17,700, while the number of unemployed females decreased by 0.7% over the month and by 6.1% over the year to 20,200.

The average duration of unemployment increased during October 2006 to 27.2 weeks, with males decreasing to 22.2 weeks and females increasing to 31.6 weeks. Nationally the average duration of unemployment increased to 40.7 weeks.

(average duration of unemployment data is original data and only available for the previous month)



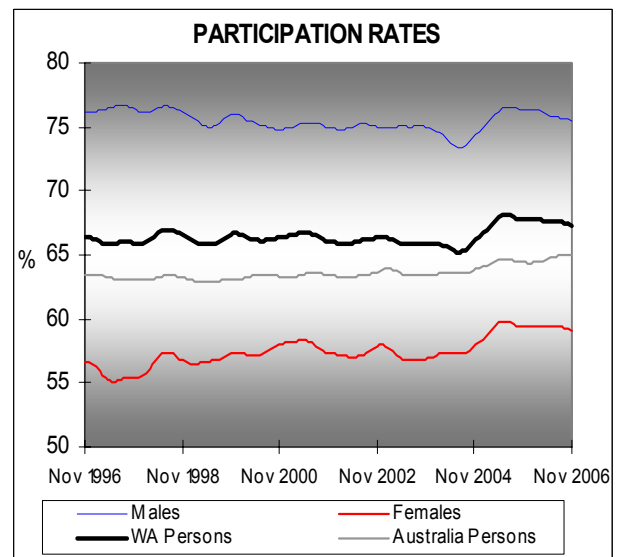
Participation Rates

The trend participation rate for WA decreased by 0.1 percentage points to 67.1% in November 2006. This is 0.8 percentage points lower than the rate a year ago.

Over the month, the male participation rate decreased by 0.1 percentage points to 75.5%, while the female participation rate also decreased by 0.1 percentage points to 59.1%. Since November last year, the male participation rate has fallen by 0.8 percentage points while the female rate has fallen by 0.3 percentage points.

WA's participation rate remains the highest of the States, although the gap has been decreasing.

Nationally, the trend participation rate decreased by 0.1 percentage points over the month to 64.8%, 0.4 percentage points higher than a year ago.



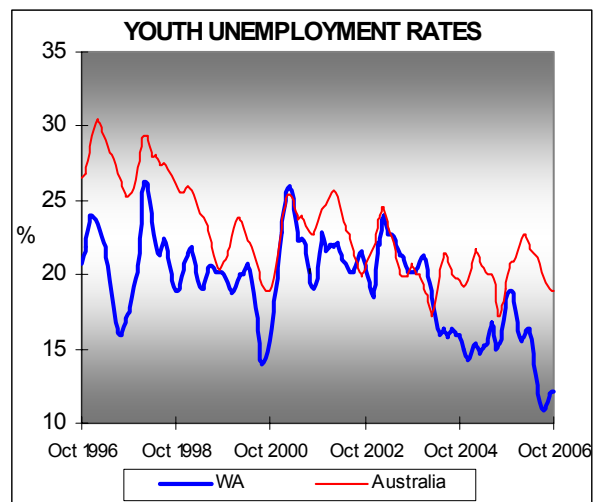
Youth Unemployment

The unemployment rate for youth (ie 15-19 year olds) looking for full-time work in WA during November 2006 was 11.4%, a decrease of 0.7 percentage points from the previous month and of 7.4 percentage points over the year.

The national youth full-time unemployment rate was 18.7%, a decrease of 0.1 percentage points over the month and of 2.0 percentage points over the year.

(Data are original and estimated by a quarterly moving average.)

The ABS trend unemployment rate for 15-19 year olds in Australia looking for full-time work in November 2006 was 19.4%, a decrease of 0.2 percentage points over the month and 1.0% over the year.



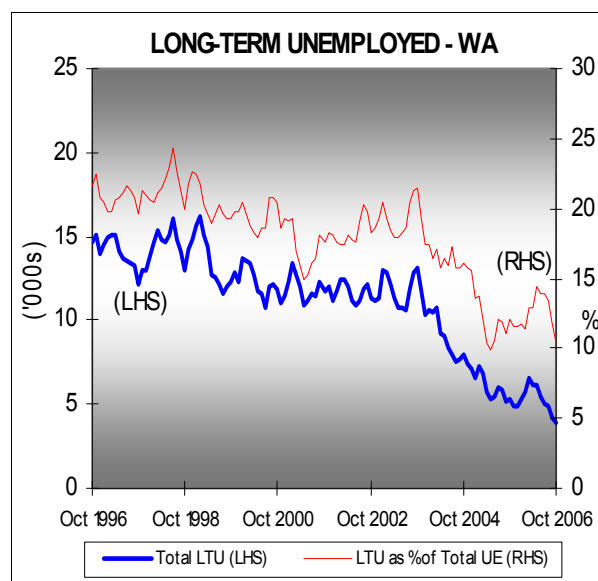
Long-term Unemployment (LTU)

In October 2006, there were 4,00 persons who had been unemployed for 12 months or more in WA, a decrease of 300 or 6.4% on September 2006 and of 1,400 or 25.5% on October 2005.

The proportion of LTU persons fell to 10.4% of the total unemployed in WA in October 2006, with the average duration of long-term unemployment increasing to 193.9 weeks.

Nationally, the number of LTU persons decreased by 5,900 or 6.5% to 84,900 in October 2006. LTU persons comprised 17.3% of the total number of unemployed, with the average duration of long-term unemployment increasing to 175.1 weeks.

(Data are original, estimated by a quarterly moving average and only available for the previous month.)



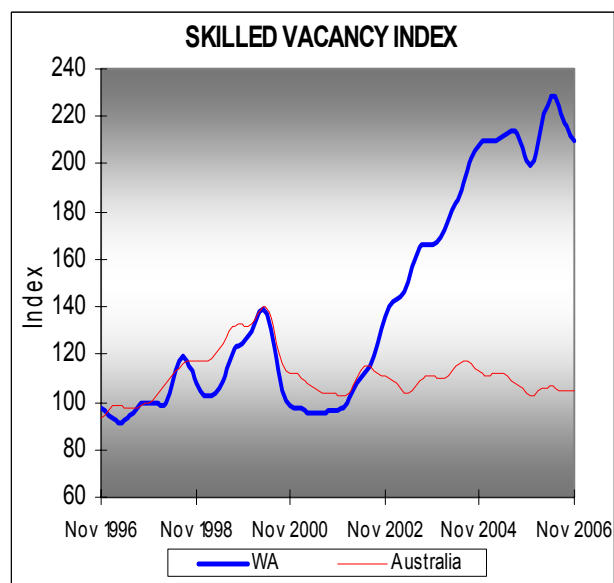
Skilled Vacancies

DEWR's Skilled Vacancy Index (SVI) for WA decreased by 1.2% in November 2006 compared with the previous month, but increased by 4.1% since November 2005 (note the strength of the series in WA compared with the national index).

Nationally, the SVI decreased by 0.1% in November 2006 and by 0.9% over the year. Over the month, the national SVI increased by 2.6% for Professionals and by 5.1% for Associate Professionals, but fell by 1.3% for Trades.

The number of vacancies on Australian JobSearch, DEWR's online employment site, was just over 10,000 in WA and just over 94,200 nationally in mid November 2006.

The trend level of ANZ Job Advertisement newspaper vacancies in WA decreased by 0.3% over the month, but increased 6.7% over the year. Nationally, they dipped 0.7% over the month, and declined by 6.8% over the year. The trend number of Australian Internet vacancies increased by 1.2% over the month, and by 20.58% over the year.



SUMMARY TABLE					
	Nov 2006	Oct 2006	Monthly Change	Nov 2005	Annual Change
Total Employed ('000s)	1,075.5	1,075.1	0.0	1,055.9	1.9%
- Full-time ('000s)	767.6	767.5	0.0%	743.3	3.3%
- Part-time ('000s)	307.9	307.6	0.1%	312.5	-1.5%
Unemployed ('000s)	37.9	38.0	-0.4%	45.2	-16.2%
Labour Force ('000s)	1,113.4	1,113.1	0.0%	1,101.1	1.1%
Unemployment Rate (%)	3.4	3.4	Nil	4.1	-0.7 percentage points
Participation Rate (%)	67.3	67.4	-0.1 percentage points	67.8	-0.5 percentage points

Regional Labour Market Data

Regional data are available from the Australian Bureau of Statistics after the preliminary labour force release. Therefore, the previous month's data are used.

The data in the following table refer to the employed persons' place of residence rather than their place of employment.

The Central Metropolitan Region includes the following Local Government Areas (LGAs): the Towns of Cambridge, Claremont, Cottesloe, Mosman Park and Vincent, the Shire of Peppermint Grove, and the Cities of Nedlands, Perth and Subiaco.

The East Metropolitan Region includes the following LGAs: the Town of Bassendean, the Cities of Bayswater and Swan, and the Shires of Kalamunda and Mundaring.

The North Metropolitan Region includes the following LGAs: the Cities of Joondalup, Stirling and Wanneroo.

The South East Metropolitan Region includes the following LGAs: the Shire of Serpentine-Jarrahdale, the Cities of Armadale, Belmont, Canning, Gosnells and South Perth and the Town of Victoria Park.

The South West Metropolitan Region includes the following LGAs: the Towns of East Fremantle and Kwinana, and the Cities of Cockburn, Fremantle, Melville and Rockingham.

The Southern WA Region includes the Statistical Divisions of South West, Upper Great Southern and Lower Great Southern.

The Rest of WA Region includes the Statistical Divisions of Midlands, South East (Goldfields-Esperance), Central (Mid West-Gascoyne), Pilbara and Kimberley.

REGION	EMPLOYMENT ('000s)			UNEMPLOYMENT ('000s)			UNEMPLOYMENT RATE (%)			PARTICIPATION RATE (%)		
	Quarterly average to Oct 2006	Quarterly average to Jul 2006	Quarterly average to Oct 2005	Quarterly average to Oct 2006	Quarterly average to Jul 2006	Quarterly average to Oct 2005	Quarterly average to Oct 2006	Quarterly average to Jul 2006	Quarterly average to Oct 2005	Quarterly average to Oct 2006	Quarterly average to Jul 2006	Quarterly average to Oct 2005
Perth Total	788.4	782.6	770.8	27.3	27.1	32.4	3.4	3.3	4.0	66.8	66.6	67.0
Central Metropolitan	69.5	71.2	73.3	2.1	1.5	1.7	2.9	2.1	2.3	64.3	65.7	68.6
East Metropolitan	129.5	128.8	127.4	5.0	4.3	5.9	3.7	3.3	4.4	64.8	64.5	65.5
North Metropolitan	243.3	242.2	234.3	8.7	9.3	8.8	3.5	3.7	3.6	69.1	69.3	67.9
South West Metropolitan	168.1	163.4	152.9	4.2	4.4	7.1	2.5	2.6	4.4	67.4	66.0	63.7
South East Metropolitan	178.0	176.9	182.9	7.4	7.5	8.8	4.0	4.1	4.6	65.8	65.8	69.3
Southern WA	143.7	146.8	146.0	5.8	4.0	6.5	3.9	2.7	4.2	65.0	65.9	67.6
Rest of WA	136.3	139.1	133.8	5.0	4.9	5.2	3.6	3.4	3.7	71.5	73.2	71.6

DEWR Leading Indicator of Employment

The Leading Indicator was developed to give advance warning of turning points in cyclical employment. It is a composite indicator combining the cyclical elements of six component series: New Motor Vehicle Sales, Dwelling Approvals, ANZ Newspaper Job Advertisements, ABS Job Vacancies, DEWR Skilled Vacancies Index and Real GDP. These series have been shown to lead employment consistently over the past two decades and are available at <http://www.workplace.gov.au/leadindicator>

The September Quarter 2006 Small Area Labour Market data was recently released and is accessible at <http://www.workplace.gov.au/SALM>

The DEWR WA Labour Economics Office maintains a page on the Workplace Internet site, which contains links to local research publications, including this report. The site is accessible at www.workplace.gov.au/statswa

Disclaimer: This report may contain material of a speculative nature and therefore should be used with some caution. The Commonwealth, its officers or agents disclaim any responsibility for any loss howsoever caused whether due to negligence or otherwise arising from the use of this report.