



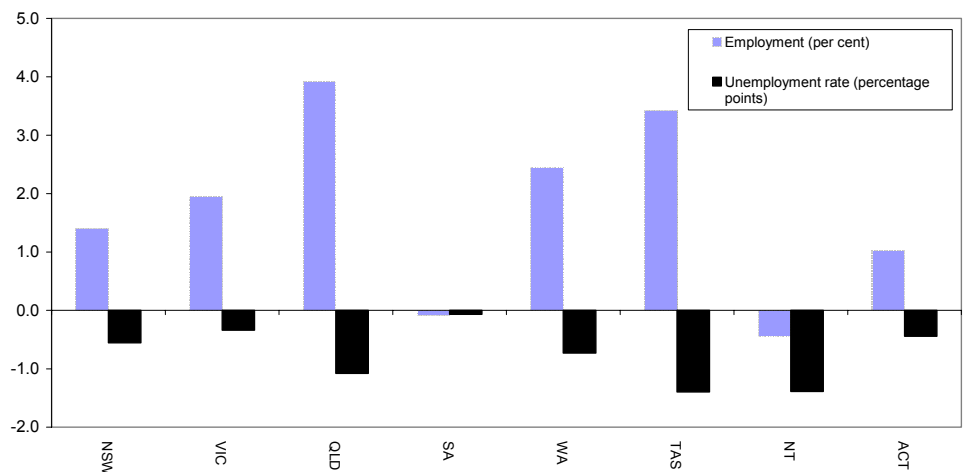
AUSTRALIAN REGIONAL LABOUR MARKETS JUNE QUARTER 2004

State/Territory labour market developments

MAIN FINDINGS

Over the year to the June quarter 2004, employment rose in the ACT and all States, except South Australia. The largest increase (in percentage terms) was recorded in Queensland (up by 3.9 per cent), followed by Tasmania (up by 3.4 per cent) and Western Australia (up by 2.4 per cent). Over the same period, the unemployment rate fell in all States and Territories.

CHANGE IN EMPLOYMENT AND THE UNEMPLOYMENT RATE, JUNE QUARTER 2003 TO JUNE QUARTER 2004



Developments at the ABS Labour Market Region Level

Employment increased in almost 70 per cent of regions over the year to the June quarter 2004 while two-thirds of regions recorded a reduction in their unemployment rate. A number of regions have recorded strong employment growth as well as a significant reduction in their unemployment rate over the last 12 months. In particular:

- Mersey-Lyell in Tasmania recorded a 10.3 per cent increase in employment while the unemployment rate fell by 2.1 percentage points to 7.4 per cent;
- employment in Northern-North West Queensland rose by 9.8 per cent while the unemployment rate fell by 3.4 percentage points to 5.3 per cent; and
- Inner Sydney recorded an 8.5 per cent increase in employment while the unemployment rate fell by 1.5 percentage points to 4.2 per cent.

LABOUR FORCE STATUS BY ABS LABOUR FORCE REGIONS
JUNE QUARTER 2004
Not Seasonally Adjusted

State/Region	Employed		Unemployed		Unemployment rate		Participation rate	
	'000	Annual change	'000	Annual change	%	Annual change % pts	%	Annual change % pts
AUSTRALIA	9639.0	192.2	569.6	-53.3	5.6	-0.6	63.5	-0.1
<i>Metropolitan Australia*</i>	<i>6100.7</i>	<i>154.8</i>	<i>336.8</i>	<i>-41.8</i>	<i>5.2</i>	<i>-0.8</i>	<i>64.4</i>	<i>0.2</i>
<i>Non-metropolitan Australia*</i>	<i>3538.2</i>	<i>37.4</i>	<i>232.8</i>	<i>-11.6</i>	<i>6.2</i>	<i>-0.4</i>	<i>61.9</i>	<i>-0.6</i>
New South Wales	3187.7	44.4	183.6	-17.0	5.4	-0.6	62.5	-0.2
<i>Sydney</i>	<i>2104.8</i>	<i>39.2</i>	<i>109.1</i>	<i>-10.0</i>	<i>4.9</i>	<i>-0.5</i>	<i>64.9</i>	<i>0.2</i>
Inner Sydney and Inner Western Sydney	264.4	15.9	12.0	-1.7	4.3	-0.9	68.4	2.9
Inner Sydney	178.6	13.9	7.8	-2.1	4.2	-1.5	70.6	3.8
Eastern Suburbs	124.1	-6.2	5.5	-0.3	4.2	0.0	61.5	-3.5
St George-Sutherland	232.7	11.9	8.5	0.8	3.5	0.1	66.6	2.9
Canterbury-Bankstown	134.6	8.6	11.0	-1.7	7.5	-1.6	57.9	2.3
Fairfield-Liverpool/ Outer South Western Sydney	270.6	2.8	21.0	-1.4	7.2	-0.5	63.9	-0.6
Fairfield-Liverpool	161.1	7.0	11.8	-1.1	6.8	-0.9	62.8	1.3
Central Western Sydney	134.2	-5.0	5.1	-3.9	3.7	-2.4	57.1	-4.2
North Western Sydney	290.8	10.0	15.9	-3.8	5.2	-1.4	67.2	0.6
Lower Northern Sydney	165.7	-1.5	5.7	-0.8	3.3	-0.4	67.6	-1.5
Central Northern Sydney	220.0	-0.9	7.8	0.8	3.4	0.4	68.0	-0.8
Northern Beaches	137.4	1.0	4.1	-0.8	2.9	-0.5	72.7	-0.5
Gosford-Wyong	130.1	2.6	12.4	2.7	8.7	1.6	58.9	1.5
<i>Balance of New South Wales</i>	<i>1082.9</i>	<i>5.2</i>	<i>74.5</i>	<i>-7.0</i>	<i>6.4</i>	<i>-0.6</i>	<i>58.4</i>	<i>-0.7</i>
Hunter	269.1	14.2	20.0	-0.2	6.9	-0.4	60.1	2.3
Newcastle	225.4	8.3	16.6	-0.5	6.8	-0.4	60.0	1.3
Illawarra and South Eastern	255.6	-8.0	17.6	-2.9	6.4	-0.8	56.4	-3.0
Illawarra	163.1	-1.5	14.5	-0.7	8.2	-0.3	54.3	-1.3
Wollongong	119.2	10.4	10.0	0.0	7.7	-0.7	58.6	4.2
Richmond-Tweed/ Mid-North Coast	203.2	0.1	16.3	-3.4	7.4	-1.4	54.0	-1.5
Northern/ Far West-North Western/ Central West	219.0	-6.6	14.9	1.5	6.4	0.8	58.7	-1.9
Murray-Murrumbidgee	136.1	5.7	5.8	-1.9	4.1	-1.5	67.4	1.1
Victoria	2390.5	45.7	141.7	-6.2	5.6	-0.3	63.2	0.0
<i>Melbourne</i>	<i>1772.0</i>	<i>54.5</i>	<i>97.0</i>	<i>-15.0</i>	<i>5.2</i>	<i>-0.9</i>	<i>64.0</i>	<i>0.4</i>
Outer Western Melbourne	277.3	9.8	23.5	3.7	7.8	0.9	64.4	1.8
North Western Melbourne	127.7	5.7	8.9	-0.1	6.5	-0.3	60.9	1.6
Inner Melbourne	147.8	2.0	10.4	1.9	6.6	1.0	68.8	0.6
North Eastern Melbourne	205.2	0.9	12.2	-5.0	5.6	-2.1	61.2	-2.1
Inner Eastern Melbourne	296.6	6.8	11.3	-4.2	3.7	-1.4	61.5	-0.3
Southern Melbourne	209.1	15.7	7.7	-1.9	3.6	-1.2	65.1	3.3
Outer Eastern Melbourne	206.4	-0.6	9.4	-2.8	4.4	-1.2	67.7	-2.2
South Eastern Melbourne	182.3	5.5	9.1	-3.2	4.8	-1.7	66.3	-0.4
Mornington Peninsula	119.6	8.7	4.4	-3.5	3.5	-3.1	60.9	1.6
<i>Balance of Victoria</i>	<i>618.4</i>	<i>-8.8</i>	<i>44.8</i>	<i>8.8</i>	<i>6.8</i>	<i>1.3</i>	<i>60.9</i>	<i>-1.0</i>
Barwon-Western District	157.9	-10.1	14.5	3.8	8.4	2.4	58.8	-3.1
Central Highlands-Wimmera	86.5	-0.6	6.4	0.8	6.9	0.9	58.9	-0.7
Loddon-Mallee	112.5	-16.8	9.0	1.7	7.4	2.0	57.9	-8.3
Goulburn-Ovens-Murray	148.8	14.2	6.6	1.9	4.2	0.8	67.1	5.9
All Gippsland	112.8	4.6	8.3	0.6	6.8	0.2	61.6	1.7

* The ABS defines metropolitan as those regions located within the State capital cities. Non-metropolitan is defined as those regions located outside the State capital cities as well as the two Territories.

LABOUR FORCE STATUS BY ABS LABOUR FORCE REGIONS
JUNE QUARTER 2004
Not Seasonally Adjusted

State/Region	Employed		Unemployed		Unemployment rate		Participation rate	
	'000	Annual change	'000	Annual change	%	Annual change % pts	%	Annual change % pts
Queensland	1872.3	70.8	117.0	-17.8	5.9	-1.1	64.9	0.1
Gold Coast	217.8	6.0	11.7	-7.1	5.1	-3.0	61.5	-2.1
<i>Brisbane</i>	<i>873.4</i>	<i>26.5</i>	<i>52.1</i>	<i>-5.8</i>	<i>5.6</i>	<i>-0.8</i>	<i>65.9</i>	<i>-0.2</i>
Brisbane City Inner Ring	234.9	19.2	12.0	-1.5	4.9	-1.0	71.9	3.6
Brisbane City Outer Ring	271.7	-3.9	15.3	-0.4	5.3	0.0	64.7	-2.7
South and East Brisbane Balance	180.4	14.7	13.5	-2.2	7.0	-1.7	66.1	2.6
North and West Brisbane Balance	186.4	-3.5	11.3	-1.8	5.7	-0.7	61.0	-3.3
<i>Balance of Queensland</i>	<i>998.9</i>	<i>44.3</i>	<i>64.9</i>	<i>-11.9</i>	<i>6.1</i>	<i>-1.3</i>	<i>64.0</i>	<i>0.3</i>
South and East Moreton	208.4	1.7	10.8	-6.4	4.9	-2.8	61.4	-3.2
North and West Moreton	158.5	11.6	10.4	-2.8	6.2	-2.1	61.3	1.5
Wide Bay-Burnett	93.4	1.3	12.4	1.8	11.7	1.4	53.1	0.3
Darling Downs-South West	121.6	0.1	6.4	0.5	5.0	0.4	65.6	-1.3
Mackay-Fitzroy-Central West	173.7	11.1	12.0	-0.8	6.4	-0.8	68.4	2.3
Northern-North West	121.2	10.8	6.8	-3.7	5.3	-3.4	70.4	2.1
Far North	122.0	7.6	6.1	-0.6	4.8	-0.8	70.3	2.2
South Australia	717.3	-0.6	47.7	-0.6	6.2	-0.1	61.3	-0.6
<i>Adelaide</i>	<i>529.1</i>	<i>1.4</i>	<i>36.0</i>	<i>-1.3</i>	<i>6.4</i>	<i>-0.2</i>	<i>61.2</i>	<i>-0.5</i>
Northern Adelaide	159.2	-1.5	13.4	-1.6	7.8	-0.8	61.5	-1.7
Western Adelaide	91.9	-1.3	7.4	-0.1	7.4	0.0	55.4	-1.1
Eastern Adelaide	117.9	-1.6	4.1	-0.1	3.4	0.0	63.7	-1.4
Southern Adelaide	160.1	5.7	11.1	0.5	6.5	0.1	63.0	1.7
<i>Balance of South Australia</i>	<i>188.3</i>	<i>-1.9</i>	<i>11.7</i>	<i>0.7</i>	<i>5.9</i>	<i>0.4</i>	<i>61.7</i>	<i>-1.0</i>
Northern and Western SA	71.7	2.7	5.2	-1.4	6.8	-2.0	60.9	0.6
Southern and Eastern SA	116.6	-4.6	6.5	2.1	5.3	1.7	62.2	-2.0
Western Australia	986.1	23.5	52.6	-6.6	5.1	-0.7	65.7	-0.3
<i>Perth</i>	<i>730.7</i>	<i>29.9</i>	<i>37.1</i>	<i>-8.3</i>	<i>4.8</i>	<i>-1.2</i>	<i>65.6</i>	<i>0.5</i>
Central Metropolitan	69.7	6.7	3.3	0.5	4.6	0.3	68.5	5.7
East Metropolitan	122.8	5.6	5.6	-2.1	4.4	-1.8	64.6	0.4
North Metropolitan	219.9	1.2	11.3	-2.4	4.9	-1.0	66.0	-1.7
South West Metropolitan	148.0	6.2	8.6	-1.2	5.5	-1.0	64.0	0.7
South East Metropolitan	170.3	10.3	8.2	-3.1	4.6	-2.0	66.0	1.4
<i>Balance of Western Australia</i>	<i>255.3</i>	<i>-6.4</i>	<i>15.5</i>	<i>1.6</i>	<i>5.7</i>	<i>0.7</i>	<i>66.1</i>	<i>-2.6</i>
Lower Western WA	121.8	-5.3	8.7	-0.1	6.7	0.2	59.3	-3.9
Remainder-Balance WA	133.5	-1.1	6.8	1.7	4.8	1.2	74.1	-1.1
Tasmania	212.3	7.0	14.4	-2.8	6.4	-1.4	58.9	0.2
Greater Hobart-Southern	105.8	3.3	6.7	-1.2	5.9	-1.2	59.0	0.2
<i>Greater Hobart</i>	<i>90.7</i>	<i>3.4</i>	<i>5.6</i>	<i>-1.4</i>	<i>5.8</i>	<i>-1.6</i>	<i>59.1</i>	<i>0.3</i>
Northern	61.5	-0.5	4.1	-1.0	6.3	-1.3	60.5	-2.3
Mersey-Lyell	45.0	4.2	3.6	-0.7	7.4	-2.1	56.6	3.4
Northern Territory	96.2	-0.4	5.8	-1.6	5.7	-1.4	71.1	-1.6
Australian Capital Territory	176.6	1.8	6.8	-0.8	3.7	-0.4	71.5	-0.1

EXPLANATORY NOTES

Introduction

The regional labour market estimates presented in this brochure are three monthly averages derived from the Australian Bureau of Statistics (ABS) Monthly Labour Force Survey. These estimates are not adjusted to take account of seasonal and other variations and can exhibit irregular movements. They should therefore be used with caution.

Related information

Users may wish to refer to the DEWR *Small Area Labour Markets, Australia* publication which is available at <http://www.workplace.gov.au> or free of charge upon request. This publication contains quarterly estimates of unemployment rates and levels for approximately 1,350 Statistical Local Areas.

Next issue

The next issue of *Australian Regional Labour Markets*, for the September quarter 2004, is expected to be released in late October 2004.

Contact details

This brochure was prepared by the Economic and Labour Market Analysis Branch, Department of Employment and Workplace Relations, Canberra. For further information on this brochure or related statistics, contact Julianne Best in the Labour Market Analysis Section on (02) 6121 5861 or email julianne.best@dewr.gov.au.

More detailed monthly National, State and regional labour force statistics are available from the ABS. For further information on ABS labour force statistics, contact Peter Bradbury on (02) 6252 6565.