

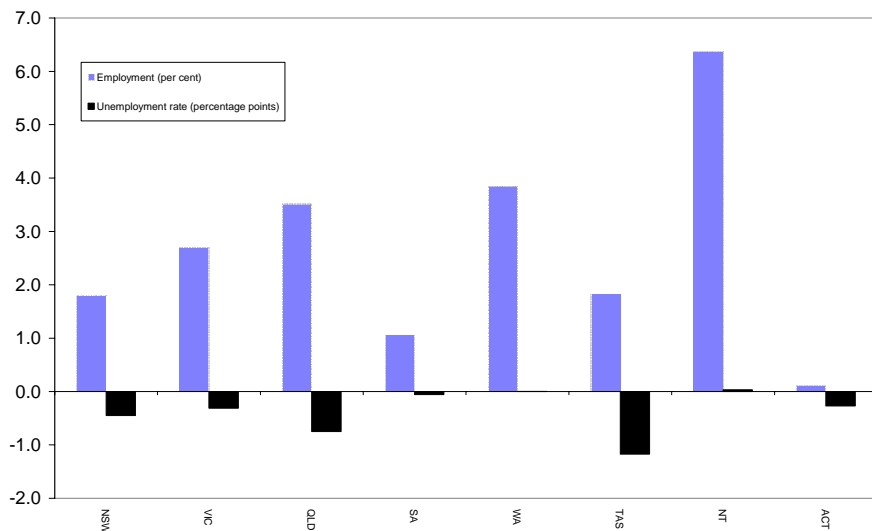


MAIN FINDINGS

State/Territory labour market developments

Employment rose in all States and Territories over the year to the September quarter 2007. The largest increase (in percentage terms) was recorded in the Northern Territory (up by 6.4 per cent), followed by Western Australia (up by 3.8 per cent) and Queensland (up by 3.5 per cent). The unemployment rate fell in all States and Territories except Western Australia and the Northern Territory, where it was unchanged. The largest falls over the year were recorded in Tasmania (down by 1.2 percentage points to 5.2 per cent) and Queensland (down by 0.7 percentage points to 3.5 per cent).

CHANGE IN EMPLOYMENT AND THE UNEMPLOYMENT RATE SEPTEMBER QUARTER 2006 TO SEPTEMBER QUARTER 2007



Developments at the ABS Labour Force Region Level

Employment increased in 83 per cent of regions over the year to the September quarter 2007, while 72 per cent of regions recorded a reduction in their unemployment rate. A number of regions have recorded strong employment growth as well as a significant reduction in their unemployment rate over the last 12 months. In particular:

- North and West Moreton in Queensland recorded a 8.5 per cent increase in employment while the unemployment rate fell by 2.3 percentage points to 3.8 per cent;
- Central Highlands - Wimmera in Victoria recorded a 8.2 per cent increase in employment while the unemployment rate fell by 1.7 percentage points to 5.5 per cent; and
- employment in Fairfield – Liverpool in Sydney rose by 7.1 per cent while the unemployment rate fell by 2.6 percentage points to 6.9 per cent.

LABOUR FORCE STATUS BY ABS LABOUR FORCE REGIONS
SEPTEMBER QUARTER 2007
Not Seasonally Adjusted

State/Region	Employed		Unemployed		Unemployment rate		Employment rate (a)		Participation rate	
	'000	Annual change	'000	Annual change	%	Annual change (% pts)	%	Annual change (% pts)	%	Annual change (% pts)
AUSTRALIA	10 511.8	260.5	446.6	-35.0	4.1	-0.4	73.0	0.5	64.9	0.2
<i>Metropolitan Australia (b)</i>	<i>6587.7</i>	<i>132.6</i>	<i>275.1</i>	<i>-8.6</i>	<i>4.0</i>	<i>-0.2</i>	<i>73.2</i>	<i>0.1</i>	<i>65.6</i>	<i>0.1</i>
<i>Non-metropolitan Australia (b)</i>	<i>3924.2</i>	<i>127.9</i>	<i>171.4</i>	<i>-26.4</i>	<i>4.2</i>	<i>-0.8</i>	<i>72.6</i>	<i>1.0</i>	<i>63.9</i>	<i>0.4</i>
New South Wales	3363.0	59.3	158.2	-13.6	4.5	-0.5	71.1	0.4	63.1	0.0
<i>Sydney</i>	<i>2189.7</i>	<i>21.0</i>	<i>96.7</i>	<i>-3.2</i>	<i>4.2</i>	<i>-0.2</i>	<i>71.9</i>	<i>-0.4</i>	<i>64.8</i>	<i>-0.3</i>
Inner Sydney and Inner Western Sydney	265.7	-5.4	11.2	1.8	4.1	0.7	73.2	-1.1	66.2	-1.6
Inner Sydney	182.3	-5.6	4.7	-2.1	2.5	-1.0	75.8	0.3	68.3	-3.6
Eastern Suburbs	137.2	4.9	3.3	-0.6	2.3	-0.5	75.9	0.4	64.8	1.2
St George-Sutherland	243.1	13.4	4.1	-4.2	1.6	-1.8	77.5	3.8	66.1	1.7
Canterbury-Bankstown	138.2	4.0	8.8	-0.1	6.0	-0.2	64.4	2.2	56.4	0.8
Fairfield-Liverpool/ Outer South Western Sydney	293.1	19.5	18.4	-5.9	5.9	-2.3	68.5	1.9	65.8	2.0
Fairfield-Liverpool	161.1	10.7	12.0	-3.8	6.9	-2.6	63.9	1.8	60.5	1.6
Central Western Sydney	142.4	2.3	7.1	-0.4	4.8	-0.4	64.9	-0.9	59.2	0.0
North Western Sydney	290.7	-7.5	18.4	4.2	6.0	1.4	68.7	-2.6	65.4	-1.6
Lower Northern Sydney	170.2	-0.2	4.8	-1.2	2.7	-0.6	75.8	-1.3	66.8	-1.4
Central Northern Sydney	232.4	-4.1	5.1	-0.2	2.1	-0.1	76.7	-2.1	68.6	-2.2
Northern Beaches	138.6	3.5	3.4	0.1	2.4	0.0	81.2	-0.7	70.6	0.9
Gosford-Wyong	138.1	-9.4	12.0	3.4	8.0	2.5	67.9	-4.4	59.9	-3.2
<i>Balance of New South Wales</i>	<i>1173.3</i>	<i>38.3</i>	<i>61.5</i>	<i>-10.4</i>	<i>5.0</i>	<i>-1.0</i>	<i>69.7</i>	<i>1.7</i>	<i>60.2</i>	<i>0.6</i>
Hunter	285.3	7.6	11.8	-3.9	4.0	-1.4	70.5	3.0	59.6	0.0
Newcastle	236.9	2.5	9.0	-4.3	3.7	-1.7	70.2	2.6	58.9	-1.2
Illawarra and South Eastern	272.6	8.1	14.5	-8.2	5.0	-2.9	66.4	1.7	57.3	-0.8
Illawarra	173.3	3.7	11.6	-5.9	6.3	-3.1	63.3	1.4	54.8	-1.4
Wollongong	124.3	1.5	8.9	-2.8	6.7	-2.0	66.2	2.6	58.4	-1.3
Richmond-Tweed/ Mid-North Coast	223.4	13.9	12.9	-2.3	5.5	-1.3	66.8	2.4	56.0	2.0
Northern/ Far West-North Western/ Central West	249.0	8.4	14.8	1.4	5.6	0.3	72.5	1.1	63.9	1.5
Murray-Murrumbidgee	142.9	0.5	7.5	2.5	5.0	1.6	75.0	-1.4	69.0	0.5
Victoria	2603.4	68.4	116.3	-5.6	4.3	-0.3	72.9	0.6	64.7	0.4
<i>Melbourne</i>	<i>1912.4</i>	<i>48.5</i>	<i>82.8</i>	<i>-1.3</i>	<i>4.2</i>	<i>-0.2</i>	<i>72.9</i>	<i>0.6</i>	<i>65.2</i>	<i>0.4</i>
Outer Western Melbourne	299.9	6.0	17.2	-0.3	5.4	-0.2	70.5	-0.2	64.8	0.0
North Western Melbourne	132.8	1.1	6.9	-0.3	4.9	-0.2	66.9	0.5	59.4	-0.7
Inner Melbourne	168.2	7.2	6.0	-1.8	3.4	-1.2	76.3	-0.3	72.6	1.1
North Eastern Melbourne	232.9	3.7	11.1	2.6	4.5	1.0	72.3	0.2	65.5	0.6
Inner Eastern Melbourne	322.7	7.3	11.2	-2.0	3.4	-0.7	73.6	0.1	63.7	-0.1
Southern Melbourne	216.8	4.2	7.8	-0.8	3.5	-0.4	74.2	-1.0	64.4	-0.1
Outer Eastern Melbourne	226.1	13.5	7.3	-1.2	3.1	-0.7	78.7	2.0	69.9	2.5
South Eastern Melbourne	181.1	4.9	10.1	2.8	5.3	1.3	67.8	1.2	63.2	1.4
Mornington Peninsula	131.9	0.5	5.3	-0.3	3.8	-0.2	76.4	4.0	64.1	-0.9
<i>Balance of Victoria</i>	<i>691.0</i>	<i>19.9</i>	<i>33.4</i>	<i>-4.3</i>	<i>4.6</i>	<i>-0.7</i>	<i>72.8</i>	<i>0.7</i>	<i>63.4</i>	<i>0.2</i>
Barwon-Western District	183.9	0.1	8.6	-3.9	4.5	-1.9	73.9	0.5	62.6	-2.4
Central Highlands-Wimmera	99.1	7.5	5.8	-1.4	5.5	-1.7	71.2	1.3	63.3	2.6
Loddon-Mallee	136.5	2.9	7.3	0.2	5.1	0.0	72.5	0.1	65.3	0.3
Goulburn-Ovens-Murray	152.9	2.6	4.1	-2.4	2.6	-1.5	75.8	2.4	64.5	-1.1
All Gippsland	118.6	6.7	7.6	3.1	6.0	2.1	69.5	-0.7	61.1	3.7

(a) The employment rate refers to the proportion of the working age (15-64) population who are employed.

(b) The ABS defines metropolitan as those regions located within the State capital cities. Non-metropolitan is defined as those regions located outside the State capital cities as well as the two Territories.

LABOUR FORCE STATUS BY ABS LABOUR FORCE REGIONS
SEPTEMBER QUARTER 2007
Not Seasonally Adjusted

State/Region	Employed		Unemployed		Unemployment rate		Employment Rate (a)		Participation rate	
	'000	Annual change	'000	Annual change	%	Annual change (% pts)	%	Annual change (% pts)	%	Annual change (% pts)
Queensland	2143.4	72.8	77.0	-14.2	3.5	-0.7	75.1	0.4	67.1	0.1
Gold Coast	262.6	16.9	9.0	-1.6	3.3	-0.8	76.3	1.3	67.6	2.2
<i>Brisbane</i>	<i>997.1</i>	<i>21.1</i>	<i>37.2</i>	<i>-2.4</i>	<i>3.6</i>	<i>-0.3</i>	<i>75.6</i>	<i>-0.4</i>	<i>68.3</i>	<i>-0.5</i>
Brisbane City Inner Ring	267.0	11.4	8.8	3.0	3.2	1.0	79.7	0.0	74.3	2.2
Brisbane City Outer Ring	299.7	-1.0	10.7	-1.3	3.5	-0.4	74.1	-1.8	65.1	-2.2
South and East Brisbane Balance	205.3	1.6	9.2	-2.0	4.3	-0.9	73.4	-0.6	67.8	-1.9
North and West Brisbane Balance	225.1	9.1	8.5	-2.1	3.7	-1.0	75.1	1.1	66.9	0.3
<i>Balance of Queensland</i>	<i>1146.3</i>	<i>51.7</i>	<i>39.8</i>	<i>-11.8</i>	<i>3.4</i>	<i>-1.1</i>	<i>74.7</i>	<i>1.1</i>	<i>66.1</i>	<i>0.5</i>
South and East Moreton	253.4	17.5	8.8	-0.1	3.3	-0.3	76.3	1.4	68.1	2.9
North and West Moreton	187.2	14.6	7.3	-3.7	3.8	-2.3	75.4	3.2	65.5	2.0
Wide Bay-Burnett	114.0	8.6	5.2	-2.1	4.3	-2.1	65.6	2.3	55.4	1.7
Darling Downs-South West	135.3	4.5	3.4	-2.0	2.4	-1.5	73.2	-1.0	65.7	-0.6
Mackay-Fitzroy-Central West	197.0	4.3	5.0	-2.4	2.5	-1.2	79.2	3.1	68.9	-1.1
Northern-North West	129.1	-5.2	4.2	-1.5	3.1	-0.9	73.9	-5.0	68.0	-5.3
Far North	130.3	7.4	6.0	0.1	4.4	-0.2	75.5	1.5	69.3	2.1
South Australia	762.7	7.9	36.5	-0.1	4.6	-0.1	71.4	-0.3	62.2	-0.2
<i>Adelaide</i>	<i>560.4</i>	<i>2.1</i>	<i>29.0</i>	<i>0.3</i>	<i>4.9</i>	<i>0.0</i>	<i>71.2</i>	<i>-0.7</i>	<i>62.0</i>	<i>-0.5</i>
Northern Adelaide	166.9	-2.9	10.7	-0.7	6.0	-0.3	68.2	-0.5	61.3	-2.0
Western Adelaide	100.7	-0.6	5.6	0.3	5.2	0.3	70.6	-0.2	57.7	-0.8
Eastern Adelaide	117.9	-3.6	4.4	0.7	3.6	0.6	72.6	-2.8	62.1	-2.3
Southern Adelaide	174.9	9.2	8.3	-0.1	4.5	-0.3	73.6	-0.1	65.5	2.5
<i>Balance of South Australia</i>	<i>202.3</i>	<i>5.9</i>	<i>7.5</i>	<i>-0.3</i>	<i>3.6</i>	<i>-0.3</i>	<i>72.0</i>	<i>0.8</i>	<i>62.7</i>	<i>0.9</i>
Northern and Western SA	80.0	2.4	3.6	0.5	4.3	0.5	73.0	3.8	64.1	1.4
Southern and Eastern SA	122.3	3.5	3.9	-0.9	3.1	-0.8	71.4	-1.2	61.8	0.5
Western Australia	1114.6	41.3	37.1	1.4	3.2	0.0	75.9	0.9	68.3	0.9
<i>Perth</i>	<i>828.6</i>	<i>37.4</i>	<i>25.1</i>	<i>-0.7</i>	<i>2.9</i>	<i>-0.2</i>	<i>76.5</i>	<i>1.7</i>	<i>68.4</i>	<i>1.3</i>
Central Metropolitan	77.4	5.7	1.9	0.3	2.4	0.2	77.7	2.7	69.6	3.8
East Metropolitan	136.4	4.9	3.2	-1.1	2.3	-0.9	75.6	2.0	65.8	0.2
North Metropolitan	252.1	9.4	8.2	-0.3	3.1	-0.2	78.2	2.2	69.8	0.8
South West Metropolitan	174.2	8.2	5.1	1.4	2.9	0.6	76.6	1.5	68.5	2.0
South East Metropolitan	188.6	9.2	6.6	-1.0	3.4	-0.7	74.3	0.5	67.8	1.3
<i>Balance of Western Australia</i>	<i>286.0</i>	<i>3.8</i>	<i>12.0</i>	<i>2.1</i>	<i>4.0</i>	<i>0.6</i>	<i>74.3</i>	<i>-1.3</i>	<i>68.1</i>	<i>-0.3</i>
Lower Western WA	148.4	3.7	6.4	1.5	4.2	0.8	74.8	0.8	65.9	0.6
Remainder-Balance WA	137.5	0.2	5.5	0.6	3.9	0.4	73.7	-3.7	70.8	-1.3
Tasmania	226.9	4.1	12.4	-2.7	5.2	-1.2	68.7	1.0	60.4	-0.2
Greater Hobart-Southern	115.2	5.4	5.2	-1.0	4.3	-1.0	70.4	2.8	61.3	1.7
<i>Greater Hobart</i>	<i>99.4</i>	<i>2.6</i>	<i>4.4</i>	<i>-1.3</i>	<i>4.2</i>	<i>-1.3</i>	<i>71.1</i>	<i>1.7</i>	<i>61.9</i>	<i>0.3</i>
Northern	62.6	-0.3	3.7	-1.0	5.6	-1.4	67.2	-0.2	59.3	-1.7
Mersey-Lyell	49.1	-1.0	3.5	-0.7	6.7	-1.1	66.9	-1.8	59.5	-2.5
Northern Territory	108.5	6.5	4.5	0.3	3.9	0.0	73.9	2.8	72.9	2.7
Australian Capital Territory	189.4	0.2	4.7	-0.5	2.4	-0.3	80.1	-0.9	72.9	-1.4

(a) The employment rate refers to the proportion of the working age (15-64) population who are employed.

EXPLANATORY NOTES

Introduction

The regional labour market estimates presented in this brochure are three-month averages derived from the Australian Bureau of Statistics (ABS) Monthly Labour Force Survey. These estimates are not adjusted to take account of seasonal and other variations and can exhibit irregular movements. They should therefore be used with caution.

Related information

Users may wish to refer to the DEWR *Small Area Labour Markets, Australia* publication, which is available, free of charge, at <http://www.workplace.gov.au> (in PDF format), or as a printed booklet upon request. This publication contains quarterly estimates of unemployment rates and levels for approximately 1350 Statistical Local Areas.

Next issue

The next issue of *Australian Regional Labour Markets*, for the December quarter 2007, is expected to be released in late January 2008.

Contact details

This brochure was prepared by the Economic and Labour Market Analysis Branch, Department of Employment and Workplace Relations, Canberra. For further information on this brochure or related statistics, contact Marjorie Rego in the Labour Market Analysis Section on (02) 6121 6198 or email marjorie.rego@dewr.gov.au.

More detailed monthly national, State and regional labour force statistics are available from the ABS. For further information on ABS labour force statistics, go to the 'Labour' theme page at the ABS website (www.abs.gov.au), or contact Craig Blair on (02) 6252 6565.