

LABOUR MARKET  
AND  
RELATED PAYMENTS  
a monthly profile

January 2004

Embargoed  
Until 11.30 am, 12 February 2004

*Annual Subscription - \$65.00*

# CONTENTS

	<i>Page</i>
<b>Introduction</b>	1
<b>Statistical Highlights</b>	2
<b>Tables</b>	
1. FaCS Labour Market Payments - Time Series	3
2. Newstart Allowees - Derivation of the Jobseeker Population	4
3. Youth Allowees (other) - Derivation of the Jobseeker Population	5
4. Jobseekers receiving Newstart Allowance and Youth Allowance (other) - Time Series	6
5. Jobseekers receiving Newstart Allowance and Youth Allowance (other) by State	7
6. Jobseekers receiving Newstart Allowance and Youth Allowance (other) by Age and Sex	8
7. Jobseekers receiving Newstart Allowance and Youth Allowance (other) by Area Support Office and Customer Service Centre	9
8. Jobseekers receiving Newstart Allowance and Youth Allowance (other) by Fortnightly Earnings and Sex	23
<b>Explanatory Notes</b>	24
<b>Glossary</b>	30
<b>Appendix</b>	33
<b>For More Information ....</b>	35

## INTRODUCTION

This publication presents statistical information on a monthly basis for the various types of labour market payments delivered by Centrelink for the Department of Family and Community Services (FaCS). This publication covers Newstart Allowance and Youth Allowance in some detail and, to a lesser extent, Mature Age Allowance, Partner Allowance and Widow Allowance.

Table 1 provides information on the total number of Newstart and Youth Allowance recipients. The Youth Allowance population is broken down into Youth Allowance (full-time students) and Youth Allowance (other) categories. The total number of Mature Age Allowance, Partner Allowance and Widow Allowance recipients are also provided in this table.

Tables 2 and 3 show the derivation of the Newstart and Youth Allowance (other) jobseeker populations (see the reference to Jobseekers in the 'Comparability of Data' section of the *Explanatory Notes*). These populations are added together to derive the total number of jobseekers.

Tables 4 to 8 provide information on the total jobseeker population.

When using time series figures, it is important to note that changes have occurred over time to the conditions of eligibility for different payments. Details of these changes are provided in the *Explanatory Notes*.

All media inquiries should be directed to the Centrelink National Media Officer on (02) 6284 6442. For more general inquiries regarding further statistical information please refer to the last page of this publication for other contact details.

The next issue of this publication is scheduled for release on 11 March 2004.

## STATISTICAL HIGHLIGHTS - January 2004

{ Newstart Allowance (NSA) customers totalled 535,559. Youth Allowance (other) (YA(o)) customers totalled 94,664.

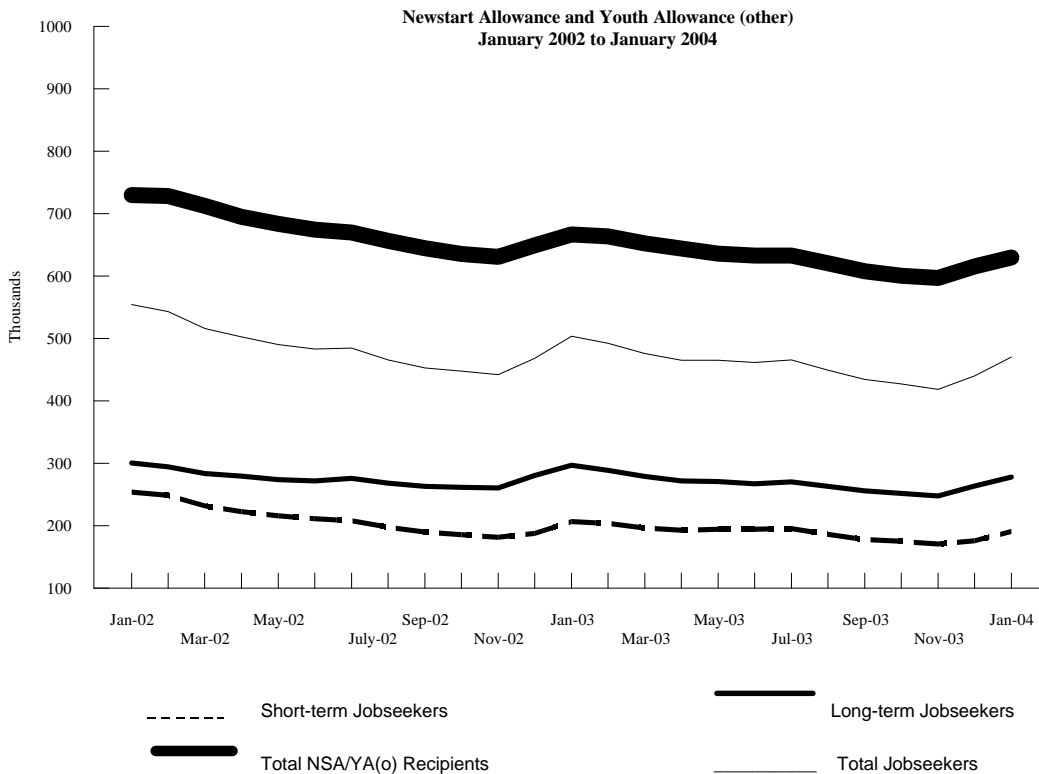
{ Between January 2003 and January 2004, the number of NSA customers decreased from 569,009 to 535,559. Youth Allowance customers also decreased from 251,475 to 243,087.

{ Total jobseekers (in receipt of either NSA or YA(o)) totalled 470,352 - an overall increase of 30,234 from December 2003.

{ Between January 2003 and January 2004, the number of jobseekers (in receipt of either NSA or YA (o)) decreased from 503,841 to 470,352 - an overall decrease of 33,489.

{ Long-term jobseekers totalled 278,371 - an overall increase of 14,603 from December 2003.

{ Short-term jobseekers totalled 191,981 - an overall increase of 15,631 from December 2003.



**TABLE 1 - FaCS LABOUR MARKET PAYMENTS - TIME SERIES (a)**

	Newstart Allowance		Youth Allowance		Mature Age Allowance	Partner Allowance	Widow Allowance
	Long-term (b)	Total	Full-time Students (c)	Other			
February 1994 (d)	472,785	977,796	..	..	..	..	..
January 2002	348,527	627,501	252,077	102,578	39,423	103,456	40,613
February 2002	350,066	630,229	263,280	98,214	39,358	103,840	40,871
March 2002	347,789	618,200	282,132	94,128	39,328	103,847	41,088
April 2002	344,184	603,047	301,047	92,084	39,563	103,739	41,242
May 2002	341,093	592,476	309,659	91,137	39,936	103,882	41,385
June 2002	339,457	583,773	313,112	91,056	40,157	103,860	41,576
July 2002	339,560	578,096	307,455	91,674	40,202	103,815	41,713
August 2002	338,152	568,697	315,171	87,822	40,236	103,814	41,907
September 2002	336,034	558,808	316,737	85,914	40,215	103,795	42,115
October 2002	335,004	551,899	309,343	83,560	40,102	103,735	42,298
November 2002	333,841	546,247	304,402	84,977	40,099	103,693	42,506
December 2002	339,563	552,637	262,659	96,808	40,131	103,743	42,680
January 2003	345,446	569,009	251,475	97,748	40,050	103,898	42,766
February 2003	343,677	570,613	260,961	93,043	40,282	104,054	42,938
March 2003	338,684	562,353	276,382	89,986	40,527	103,874	43,089
April 2003	333,806	554,505	289,342	89,501	40,682	103,787	43,206
May 2003	330,294	548,554	297,514	87,457	40,784	103,765	43,308
June 2003	327,544	545,685	304,491	87,574	41,372	104,080	43,550
July 2003	326,980	543,578	298,178	89,479	41,582	104,363	43,797
August 2003	324,559	535,399	305,220	85,340	41,882	105,173	44,188
September 2003	320,932	524,947	309,974	82,836	42,625	106,144	44,644
October 2003	318,997	520,317	306,946	80,666	42,140	105,973	45,014
November 2003	316,791	515,849	297,405	81,332	41,124	104,772	45,401
December 2003	321,781	523,107	256,770	92,671	40,117	103,495	45,760
January 2004	326,578	535,559	243,087	94,664	39,027	101,894	45,859
<i>Variation December 2003 - January 2004</i>							
Number	4,797	12,452	-13,683	1,993	-1,090	-1,601	99
Per cent	1.5	2.4	-5.3	2.2	-2.7	-1.5	0.2
<i>Variation January 2003 - January 2004</i>							
Number	-18,868	-33,450	-8,388	-3,084	-1,023	-2,004	3,093
Per cent	-5.5	-5.9	-3.3	-3.2	-2.6	-1.9	7.2

(a) This table presents data using the revised method of measuring the number of people receiving FaCS labour market payments introduced in July 2002. Revised historical data back to May 1998 is in Table A, July 2002 publication.

(b) Long-term Newstart allowees are persons who have been receiving income support for 12 months or more.

(c) The number of full time students does not include those who have traded in their entire Youth Allowance entitlement for a loan under the Student Financial Supplement Loan Scheme. The Government announced on 24 April 2003 that no further loans will be issued under this Scheme from 1 January 2004. For further details, refer to the Explanatory Notes at the back of this publication.

(d) February 1994 data has been included for comparison purposes due to the peak in the number of persons receiving JSA/NSA at this point in time.

Note: Most of the figures in this publication are averages and have been rounded. As a result, discrepancies may occur between sums of component items and totals, and in the calculation of variations.

**TABLE 2 - NEWSTART ALLOWEES - DERIVATION OF THE JOBSEEKER POPULATION**

	Variation					
	December 2003	January			December - January	
		Males	Females	Persons	Number	Per cent
<b>Short-term NSA Customers</b>	<b>201,326</b>	<b>143,422</b>	<b>65,559</b>	<b>208,981</b>	<b>7,655</b>	<b>3.8</b>
CPS recipients (a)	2,258	1,648	552	2,200	-58	-2.6
Did not receive a payment (b)	13,579	6,254	3,444	9,698	-3,881	-28.6
Received a payment	185,489	135,520	61,563	197,083	11,594	6.3
Incapacitated (c)	21,855	13,625	7,621	21,246	-609	-2.8
Training	7,709	4,046	1,867	5,913	-1,796	-23.3
Self-employment development (d)	402	166	94	260	-142	-35.3
Voluntary/part-time work (e)	1,694	1,121	601	1,722	28	1.7
Other/temporary exemptions (f)	11,120	7,129	4,164	11,293	173	1.6
<b>Short-term NSA Jobseekers (g)</b>	<b>142,709</b>	<b>109,433</b>	<b>47,216</b>	<b>156,649</b>	<b>13,940</b>	<b>9.8</b>
<b>Long-term NSA Customers</b>	<b>321,781</b>	<b>218,371</b>	<b>108,207</b>	<b>326,578</b>	<b>4,797</b>	<b>1.5</b>
CPS recipients (a)	7,313	5,213	2,065	7,278	-35	-0.5
Did not receive a payment (b)	13,223	5,566	3,598	9,164	-4,059	-30.7
Received a payment	301,245	207,592	102,544	310,136	8,891	3.0
Incapacitated (c)	32,175	18,951	11,905	30,856	-1,319	-4.1
Training	25,958	14,932	8,028	22,960	-2,998	-11.5
Self-employment development (d)	203	89	51	140	-63	-31.0
Voluntary/part-time work (e)	3,973	2,610	1,348	3,958	-15	-0.4
Other/temporary exemptions (f)	18,054	11,378	6,872	18,250	196	1.1
<b>Long-term NSA Jobseekers (g)</b>	<b>220,882</b>	<b>159,632</b>	<b>74,340</b>	<b>233,972</b>	<b>13,090</b>	<b>5.9</b>
<b>All NSA Customers</b>	<b>523,107</b>	<b>361,793</b>	<b>173,766</b>	<b>535,559</b>	<b>12,452</b>	<b>2.4</b>
CPS recipients (a)	9,571	6,861	2,617	9,478	-93	-1.0
Did not receive a payment (b)	26,802	11,820	7,042	18,862	-7,940	-29.6
Received a payment	486,734	343,112	164,107	507,219	20,485	4.2
Incapacitated (c)	54,030	32,576	19,526	52,102	-1,928	-3.6
Training	33,667	18,978	9,895	28,873	-4,794	-14.2
Self-employment development (d)	605	255	145	400	-205	-33.9
Voluntary/part-time work (e)	5,667	3,731	1,949	5,680	13	0.2
Other/temporary exemptions (f)	29,174	18,507	11,036	29,543	369	1.3
<b>All NSA Jobseekers (g)</b>	<b>363,591</b>	<b>269,065</b>	<b>121,556</b>	<b>390,621</b>	<b>27,030</b>	<b>7.4</b>

(a) Persons with NSA eligibility who received CDEP Participant Supplement or add ons while participating in CDEP Projects.

(b) Persons who did not receive a payment due to their income and/or that of their partner. This group is often referred to as zero-paid.

(c) Activity code "incapacitated" relates to NSA recipients who have become temporarily ill or incapacitated.

(d) Those customers exempted from job search while they develop self-employment opportunities.

(e) Those customers undertaking approved full-time voluntary work or combinations of voluntary and part-time work who are not required to seek work.

(f) Includes other customers known not to have job search obligations. See 'Jobseekers' in Explanatory Notes.

(g) Those customers who received a payment and generally are required to search for work. These customers form the basis of the population group in Tables 2 - 7.

Notes:

- For information on short-term and long-term categories please refer to the Glossary.

- Most of the figures in this publication are averages and have been rounded. As a result, discrepancies may occur between sums of component items and totals, and in the calculation of variations.

**TABLE 3 - YOUTH ALLOWEES (OTHER) - DERIVATION OF THE JOBSITEER POPULATION**

	December 2003	January		Variation December - January		
		Males	Females	Persons	Number	Per cent
<b>Short-term YA (other) Customers</b>	<b>41,528</b>	<b>22,673</b>	<b>19,776</b>	<b>42,449</b>	<b>921</b>	<b>2.2</b>
CPS recipients (a)	1,163	704	445	1,149	-14	-1.2
Did not receive a payment (b)	1,011	326	441	767	-244	-24.1
Received a payment	39,354	21,643	18,890	40,533	1,179	3.0
Part-time study & work (c)	8	2	1	3	-5	-62.5
Part-time study & other YA activities (d)	85	23	31	54	-31	-36.5
Incapacitated (e)	2,188	994	1,116	2,110	-78	-3.6
Training	1,289	655	350	1,005	-284	-22.0
Self-employment development (e)	11	4	3	7	-4	-36.4
Full-time voluntary work	16	4	7	11	-5	-31.3
Other non-jobseekers (e)	2,116	975	1,036	2,011	-105	-5.0
<b>Short-term YA (other) Jobseekers (f)</b>	<b>33,641</b>	<b>18,986</b>	<b>16,346</b>	<b>35,332</b>	<b>1,691</b>	<b>5.0</b>
<b>Long-term YA (other) Customers</b>	<b>51,143</b>	<b>25,574</b>	<b>26,641</b>	<b>52,215</b>	<b>1,072</b>	<b>2.1</b>
CPS recipients (a)	1,024	625	372	997	-27	-2.6
Did not receive a payment (b)	1,179	431	656	1,087	-92	-7.8
Received a payment	48,940	24,518	25,613	50,131	1,191	2.4
Part-time study & work (c)	8	1	3	4	-4	-50.0
Part-time study & other YA activities (d)	116	27	51	78	-38	-32.8
Incapacitated (e)	1,920	719	1,128	1,847	-73	-3.8
Training	2,184	1,025	945	1,970	-214	-9.8
Self-employment development (e)	4	1	2	3	-1	-25.0
Full-time voluntary work	34	15	13	28	-6	-17.6
Other non-jobseekers (e)	1,788	789	1,013	1,802	14	0.8
<b>Long-term YA (other) Jobseekers (f)</b>	<b>42,886</b>	<b>21,941</b>	<b>22,458</b>	<b>44,399</b>	<b>1,513</b>	<b>3.5</b>
<b>All YA (other) Customers</b>	<b>92,671</b>	<b>48,247</b>	<b>46,417</b>	<b>94,664</b>	<b>1,993</b>	<b>2.2</b>
CPS recipients (a)	2,187	1,329	817	2,146	-41	-1.9
Did not receive a payment (b)	2,190	757	1,097	1,854	-336	-15.3
Received a payment	88,294	46,161	44,503	90,664	2,370	2.7
Part-time study & work (c)	16	3	4	7	-9	-56.3
Part-time study & other YA activities (d)	201	50	82	132	-69	-34.3
Incapacitated (e)	4,108	1,713	2,244	3,957	-151	-3.7
Training	3,473	1,680	1,295	2,975	-498	-14.3
Self-employment development (e)	15	5	5	10	-5	-33.3
Full-time voluntary work	50	19	20	39	-11	-22.0
Other non-jobseekers (e)	3,904	1,764	2,049	3,813	-91	-2.3
<b>All YA (other) Jobseekers (f)</b>	<b>76,527</b>	<b>40,927</b>	<b>38,804</b>	<b>79,731</b>	<b>3,204</b>	<b>4.2</b>

(a) Persons with YA eligibility who received CDEP Participant Supplement or add ons while participating in CDEP projects.

(b) Persons who did not receive a payment due to their own income and/or that of their partner or parents, where applicable. This group is often referred to as zero-paid (c) Those customers undertaking approved part-time study and work who are considered to have a full activity load and are not required to seek work.

(d) Those customers undertaking approved part-time study and other activities who are considered to have a full activity load and are not required to seek work.

(e) These categories are defined in the same way as in Table 2, except that those customers combining these activities with part-time study are classified under part-time study and other activities.

(f) Those customers who received a payment and generally are required to search for work. These customers form the basis of the population group in Tables 2 - 7.

Notes:

- For information on short-term and long-term categories please refer to the Glossary.

- Most of the figures in this publication are averages and have been rounded. As a result, discrepancies may occur between sums of component items and totals, and in the calculation of variations.

**TABLE 4 - JOBSEEKERS RECEIVING NEWSTART ALLOWANCE AND YOUTH ALLOWANCE (OTHER)**  
**TIME SERIES (a)**

	Short-term	Long-term	Total
January 2002	253,959	300,637	554,596
February 2002	248,771	294,759	543,530
March 2002	232,180	284,066	516,246
April 2002	222,980	279,666	502,646
May 2002	216,269	274,302	490,571
June 2002	211,427	272,037	483,464
July 2002	208,536	276,198	484,734
August 2002	197,468	268,400	465,868
September 2002	189,762	263,085	452,847
October 2002	185,780	261,924	447,704
November 2002	181,762	260,685	442,447
December 2002	187,986	280,614	468,600
January 2003	206,675	297,166	503,841
February 2003	203,922	288,718	492,640
March 2003	196,529	279,421	475,950
April 2003	193,214	272,157	465,371
May 2003	194,400	271,109	465,509
June 2003	194,490	267,506	461,996
July 2003	195,487	270,316	465,803
August 2003	186,399	263,215	449,614
September 2003	178,316	256,054	434,370
October 2003	175,181	252,009	427,190
November 2003	170,868	247,695	418,563
December 2003	176,350	263,768	440,118
January 2004	191,981	278,371	470,352
<i>Variation December 2003 - January 2004</i>			
<i>Number</i>	15,631	14,603	30,234
<i>Per cent</i>	8.9	5.5	6.9

(a) This table presents data using the revised method of measuring the number of people receiving FaCS labour market payment introduced in July 2002. Revised historical data back to May 1998 is in Table B, July 2002 publication.

Notes:

- For information on short-term and long-term categories please refer to the Glossary.
- Most of the figures in this publication are averages and have been rounded. As a result, discrepancies may occur between sums of component items and totals, and in the calculation of variations.

**TABLE 5 - JOBSEEKERS RECEIVING NEWSTART ALLOWANCE AND YOUTH ALLOWANCE (OTHER)  
BY STATE**

<i>State</i>	December 2003	January 2004	Variation	
			December - January Number	Per cent
<b>SHORT-TERM JOBSEEKERS</b>				
New South Wales	55,075	59,813	4,738	8.6
Victoria	42,055	45,339	3,284	7.8
Queensland	39,197	43,428	4,231	10.8
South Australia	13,497	15,107	1,610	11.9
Western Australia	17,848	19,117	1,269	7.1
Tasmania	5,107	5,343	236	4.6
Northern Territory	1,888	2,036	148	7.8
Australian Capital Territory	1,683	1,798	115	6.8
<b>AUSTRALIA</b>	<b>176,350</b>	<b>191,981</b>	<b>15,631</b>	<b>8.9</b>
<b>LONG-TERM JOBSEEKERS</b>				
New South Wales	84,911	90,269	5,358	6.3
Victoria	62,431	65,921	3,490	5.6
Queensland	52,813	55,010	2,197	4.2
South Australia	22,680	24,026	1,346	5.9
Western Australia	22,586	24,311	1,725	7.6
Tasmania	12,829	12,982	153	1.2
Northern Territory	3,008	3,168	160	5.3
Australian Capital Territory	2,510	2,684	174	6.9
<b>AUSTRALIA</b>	<b>263,768</b>	<b>278,371</b>	<b>14,603</b>	<b>5.5</b>
<b>TOTAL JOBSEEKERS</b>				
New South Wales	139,986	150,082	10,096	7.2
Victoria	104,486	111,260	6,774	6.5
Queensland	92,010	98,438	6,428	7.0
South Australia	36,177	39,133	2,956	8.2
Western Australia	40,434	43,428	2,994	7.4
Tasmania	17,936	18,325	389	2.2
Northern Territory	4,896	5,204	308	6.3
Australian Capital Territory	4,193	4,482	289	6.9
<b>AUSTRALIA</b>	<b>440,118</b>	<b>470,352</b>	<b>30,234</b>	<b>6.9</b>

Note: The majority of figures in this publication are averages, and have been rounded. As a result, discrepancies may occur between sums of component items and totals. The discrepancies may also affect the calculation of the variations in Table 2, 3, 5 and 7.

**TABLE 6 - JOBSEEKERS RECEIVING NEWSTART ALLOWANCE AND YOUTH ALLOWANCE (OTHER)  
BY AGE AND SEX (JANUARY 2004)**

Age	Short-term Jobseekers		Long-term Jobseekers		Total Jobseekers	
	Number	Per cent	Number	Per cent	Number	Per cent
<b>MALES</b>						
Less than 18 years	5,612	4.4	4,210	2.3	9,822	3.2
18 - 20 years	13,373	10.4	17,646	9.7	31,019	10.0
21 - 24 years	23,386	18.2	26,081	14.4	49,467	16.0
25 - 29 years	21,247	16.5	25,723	14.2	46,970	15.2
30 - 39 years	30,193	23.5	41,158	22.7	71,351	23.0
40 - 49 years	18,036	14.0	34,437	19.0	52,473	16.9
50 - 59 years	12,372	9.6	29,588	16.3	41,960	13.5
60 years and over	4,202	3.3	2,729	1.5	6,931	2.2
<b>TOTAL</b>	<b>128,421</b>	<b>100.0</b>	<b>181,572</b>	<b>100.0</b>	<b>309,993</b>	<b>100.0</b>
<b>FEMALES</b>						
Less than 18 years	5,511	8.7	4,712	4.9	10,223	6.4
18 - 20 years	10,833	17.0	17,657	18.2	28,490	17.8
21 - 24 years	13,806	21.7	17,588	18.2	31,394	19.6
25 - 29 years	8,605	13.5	10,464	10.8	19,069	11.9
30 - 39 years	8,229	12.9	13,091	13.5	21,320	13.3
40 - 49 years	8,175	12.9	20,205	20.9	28,380	17.7
50 - 59 years	7,306	11.5	12,516	12.9	19,822	12.4
60 years and over	1,095	1.7	566	0.6	1,661	1.0
<b>TOTAL</b>	<b>63,560</b>	<b>100.0</b>	<b>96,799</b>	<b>100.0</b>	<b>160,359</b>	<b>100.0</b>
<b>PERSONS</b>						
Less than 18 years	11,123	5.8	8,922	3.2	20,045	4.3
18 - 20 years	24,206	12.6	35,303	12.7	59,509	12.7
21 - 24 years	37,192	19.4	43,669	15.7	80,861	17.2
25 - 29 years	29,852	15.5	36,187	13.0	66,039	14.0
30 - 39 years	38,422	20.0	54,249	19.5	92,671	19.7
40 - 49 years	26,211	13.7	54,642	19.6	80,853	17.2
50 - 59 years	19,678	10.2	42,104	15.1	61,782	13.1
60 years and over	5,297	2.8	3,295	1.2	8,592	1.8
<b>TOTAL</b>	<b>191,981</b>	<b>100.0</b>	<b>278,371</b>	<b>100.0</b>	<b>470,352</b>	<b>100.0</b>

**TABLE 7 - JOBSEEKERS RECEIVING NEWSTART ALLOWANCE AND YOUTH ALLOWANCE  
(OTHER) BY AREA SUPPORT OFFICE AND CUSTOMER SERVICE CENTRE**

<i>Area Support Office and Customer Service Centre</i>	December 2003	January 2004	Variation	
			December - January Number	Per cent
<i>EAST COAST (SYDNEY)</i>				
Bondi Junction	1,505	1,666	161	10.7
Chatswood	1,290	1,428	138	10.7
Darlinghurst	1,876	2,012	136	7.2
Darlinghurst YSU	37	36	-1	%
Hornsby	994	1,126	132	13.3
Leichhardt	1,660	1,847	187	11.3
Maroubra	1,337	1,448	111	8.3
Marrickville	1,765	1,899	134	7.6
Northern Beaches	1,369	1,540	171	12.5
Sydney Central YSU	3	2	-1	%
Other (a)	33	44	11	%
<i>Total</i>	11,869	13,048	1,179	9.9
<i>EAST COAST (WOLLONGONG)</i>				
Caringbah	1,632	1,774	142	8.7
Corrimal	1,443	1,568	125	8.7
Dapto	1,283	1,355	72	5.6
Hurstville	1,437	1,546	109	7.6
Nowra	2,002	2,120	118	5.9
Redfern	1,563	1,651	88	5.6
Rockdale	1,601	1,743	142	8.9
Shellharbour	1,874	2,021	147	7.8
Sutherland	26	31	5	%
Ulladulla	520	541	21	4.0
Wollongong	2,134	2,312	178	8.3
Other (a)	33	46	13	%
<i>Total</i>	15,548	16,708	1,160	7.5

Note: For footnotes see end of table.

**TABLE 7 - JOBBEERS RECEIVING NEWSTART ALLOWANCE AND YOUTH ALLOWANCE  
(OTHER) BY AREA SUPPORT OFFICE AND CUSTOMER SERVICE CENTRE**

<i>Area Support Office and Customer Service Centre</i>	December 2003	January 2004	Variation	
			December - January Number	Per cent
<i>HUNTER NSW</i>				
Armidale	1,382	1,501	119	8.6
Cessnock	974	1,073	99	10.2
Charlestown	3,043	3,288	245	8.1
Ettalong	1,017	1,068	51	5.0
Forster	884	903	19	2.1
Gosford*	2,058	2,189	131	6.4
Gosford NSS*	1	1	0	%
Gunnedah	522	557	35	6.7
Inverell	811	856	45	5.5
Kempsey	1,443	1,499	56	3.9
Kurri Kurri	636	686	50	7.9
Lakehaven	1,668	1,822	154	9.2
Maitland	1,963	2,067	104	5.3
Mayfield	1,431	1,544	113	7.9
Muswellbrook	709	741	32	4.5
Nambucca Heads	1,267	1,327	60	4.7
Nelson Bay	582	585	3	0.5
Newcastle	2,075	2,205	130	6.3
Port Macquarie	1,832	1,912	80	4.4
Raymond Terrace	1,131	1,182	51	4.5
Singleton	332	359	27	8.1
Tamworth	1,978	2,110	132	6.7
Taree	1,817	1,899	82	4.5
The Entrance	1,220	1,271	51	4.2
Toronto	1,390	1,471	81	5.8
Tuggerah	0	0	0	%
Wallsend	2,055	2,210	155	7.5
Wyong	662	705	43	6.5
Other (a)	36	41	5	%
<i>Total</i>	34,919	37,072	2,153	6.2

Note: For footnotes see end of table.

\*12/05/2003 customers transferred from Gosford NSS to Gosford CSC.

**TABLE 7 - JOBBEERS RECEIVING NEWSTART ALLOWANCE AND YOUTH ALLOWANCE  
(OTHER) BY AREA SUPPORT OFFICE AND CUSTOMER SERVICE CENTRE**

<i>Area Support Office and Customer Service Centre</i>	December 2003	January 2004	Variation	
			December - January Number	Per cent
<i>SOUTH METROPOLITAN NSW</i>				
Ashfield	31	30	-1	%
Bankstown	3,921	4,194	273	7.0
Cabramatta	2,181	2,347	166	7.6
Camden	374	398	24	6.4
Campbelltown	2,626	2,914	288	11.0
Campsie	2,068	2,198	130	6.3
Fairfield	4,294	4,801	507	11.8
Ingleburn	1,144	1,205	61	5.3
Lakemba	22	23	1	%
Liverpool	3,888	4,220	332	8.5
Revesby	16	19	3	%
Strathfield	1,672	1,774	102	6.1
Other (a)	5	8	3	%
<i>Total</i>	22,242	24,131	1,889	8.5
<i>WEST NSW</i>				
Auburn	2,332	2,464	132	5.7
Baulkham Hills	628	707	79	12.6
Blacktown	3,039	3,329	290	9.5
Hawkesbury	746	861	115	15.4
Katoomba	710	769	59	8.3
Lithgow	753	785	32	4.2
Merrylands	1,658	1,836	178	10.7
Mt Druitt	2,403	2,572	169	7.0
Mudgee	742	809	67	9.0
Parramatta	2,128	2,341	213	10.0
Penrith	1,631	1,765	134	8.2
Ryde	1,053	1,163	110	10.4
Springwood	432	483	51	11.8
St Marys	1,567	1,760	193	12.3
Other (a)	7	10	3	%
<i>Total</i>	19,829	21,654	1,825	9.2

Note: For footnotes see end of table.

**TABLE 7 - JOBBEEKERS RECEIVING NEWSTART ALLOWANCE AND YOUTH ALLOWANCE  
(OTHER) BY AREA SUPPORT OFFICE AND CUSTOMER SERVICE CENTRE**

<i>Area Support Office and Customer Service Centre</i>	December 2003	January 2004	Variation	
			December - January Number	Per cent
<i>SOUTH WEST NSW</i>				
Albury	2,474	2,631	157	6.3
Batemans Bay	804	847	43	5.3
Bathurst	963	1,062	99	10.3
Bega	773	812	39	5.0
Belconnen	1,201	1,311	110	9.2
Bourke	480	497	17	3.5
Bowral	509	524	15	2.9
Braddon	1,218	1,275	57	4.7
Cooma	405	409	4	1.0
Cowra	474	534	60	12.7
Deniliquin	282	322	40	14.2
Dubbo	2,058	2,147	89	4.3
Goulburn	799	839	40	5.0
Griffith	656	656	0	0.0
Gungahlin	178	182	4	2.2
Lanyon	73	78	5	%
Leeton	395	431	36	9.1
Narooma	447	453	6	1.3
Orange	1,161	1,250	89	7.7
Parkes	1,164	1,227	63	5.4
Queanbeyan	671	705	34	5.1
Tuggeranong	759	837	78	10.3
Tumut	375	393	18	4.8
Wagga	1,812	1,925	113	6.2
Woden	825	848	23	2.8
Yass	108	107	-1	-0.9
Young	491	517	26	5.3
Other (a)	6	6	0	%
<i>Total</i>	21,561	22,825	1,264	5.9

Note: For footnotes see end of table.

**TABLE 7 - JOBBEERS RECEIVING NEWSTART ALLOWANCE AND YOUTH ALLOWANCE  
(OTHER) BY AREA SUPPORT OFFICE AND CUSTOMER SERVICE CENTRE**

<i>Area Support Office and Customer Service Centre</i>	December 2003	January 2004	Variation	
			December - January Number	Per cent
<i>NORTH-CENTRAL VICTORIA</i>				
Box Hill	1,952	2,080	128	6.6
Broadmeadows	3,847	4,145	298	7.7
Darebin	3,791	4,147	356	9.4
Echuca	683	690	7	1.0
Epping	2,458	2,651	193	7.9
Fitzroy	2,263	2,363	100	4.4
Greensborough	1,492	1,645	153	10.3
Heidelberg	1,103	1,178	75	6.8
Lilydale	1,666	1,790	124	7.4
Moreland	3,281	3,530	249	7.6
Newmarket	1,971	2,120	149	7.6
Richmond	1,282	1,349	67	5.2
Ringwood	2,058	2,170	112	5.4
Seymour	685	740	55	8.0
Shepparton	2,806	2,970	164	5.8
Sth Melbourne	980	1,065	85	8.7
Wangaratta	1,922	2,037	115	6.0
Windsor (VIC)	3,753	3,978	225	6.0
Other (a)	16	15	-1	%
<i>Total</i>	38,009	40,663	2,654	7.0

Note: For footnotes see end of table.

**TABLE 7 - JOBSEEKERS RECEIVING NEWSTART ALLOWANCE AND YOUTH ALLOWANCE  
(OTHER) BY AREA SUPPORT OFFICE AND CUSTOMER SERVICE CENTRE**

<i>Area Support Office and Customer Service Centre</i>	December 2003	January 2004	Variation	
			December - January Number	Per cent
<i>SOUTH-EAST VICTORIA</i>				
Bairnsdale	983	1,019	36	3.7
Belgrave*	571	638	67	11.7
Camberwell	1,197	1,286	89	7.4
Cheltenham	2,285	2,489	204	8.9
Cranbourne	1,182	1,252	70	5.9
Dandenong	2,922	3,175	253	8.7
Fountain Gate	2,049	2,227	178	8.7
Frankston	3,516	3,697	181	5.1
Glen Waverley	1,376	1,573	197	14.3
Leongatha	2	2	0	%
Mornington	576	609	33	5.7
Morwell	2,944	3,076	132	4.5
Oakleigh	2,153	2,311	158	7.3
Rosebud	1,005	995	-10	-1.0
Rowville	529	560	31	5.9
Sale	1,015	1,067	52	5.1
Springvale	2,707	2,969	262	9.7
Wantirna*	1,422	1,508	86	6.0
Warragul	465	495	30	6.5
Wonthaggi	630	620	-10	-1.6
Other (a)	7	9	2	%
<i>Total</i>	29,536	31,577	2,041	6.9

Note: For footnotes see end of the table.

\* Belgrave and Wantirna CSCs were previously included under Knox. Knox no longer exists and has been removed from list.

Belgrave and Wantirna CSCs are shown independently.

**TABLE 7 - JOBBEERS RECEIVING NEWSTART ALLOWANCE AND YOUTH ALLOWANCE  
(OTHER) BY AREA SUPPORT OFFICE AND CUSTOMER SERVICE CENTRE**

<i>Area Support Office and Customer Service Centre</i>	December 2003	January 2004	Variation	
			December - January Number	Per cent
<i>WEST VICTORIA</i>				
Ararat	307	346	39	12.7
Ballarat	3,521	3,738	217	6.2
Bendigo	3,708	3,877	169	4.6
Colac	565	592	27	4.8
Corio	2,056	2,168	112	5.4
Essendon (Airport West)	1,662	1,692	30	1.8
Footscray	2,356	2,450	94	4.0
Geelong	3,706	3,910	204	5.5
Hamilton	417	454	37	8.9
Horsham	798	826	28	3.5
Maryborough (VIC)	588	642	54	9.2
Melton	1,240	1,307	67	5.4
Mildura	1,974	2,109	135	6.8
Newport	1,380	1,438	58	4.2
Portland	586	593	7	1.2
Stawell	197	212	15	7.6
Sunbury	736	806	70	9.5
Sunshine	3,129	3,289	160	5.1
Swan Hill	873	949	76	8.7
Warrnambool	991	1,071	80	8.1
Watgardens	3,623	3,833	210	5.8
Werribee	2,376	2,482	106	4.5
Other (a)	21	20	-1	%
<i>Total</i>	36,810	38,804	1,994	5.4

Note: For footnotes see end of table.

**TABLE 7 - JOBBEERS RECEIVING NEWSTART ALLOWANCE AND YOUTH ALLOWANCE  
(OTHER) BY AREA SUPPORT OFFICE AND CUSTOMER SERVICE CENTRE**

<i>Area Support Office and Customer Service Centre</i>	December 2003	January 2004	Variation	
			December - January Number	Per cent
<i>BRISBANE</i>				
Annerley	1,351	1,500	149	11.0
Bundaberg	3,433	3,727	294	8.6
Caboolture	2,953	3,138	185	6.3
Caloundra	1,586	1,686	100	6.3
Capalaba	928	1,004	76	8.2
Chermside	1,500	1,634	134	8.9
Cleveland	999	1,035	36	3.6
Fortitude Valley	2,098	2,277	179	8.5
Gympie	1,640	1,777	137	8.4
Hervey Bay	1,486	1,517	31	2.1
Kawana Waters	713	777	64	9.0
Kingaroy	843	893	50	5.9
Maroochydore	2,025	2,132	107	5.3
Maryborough	1,494	1,568	74	5.0
Mitchelton	1,513	1,650	137	9.1
Mt Gravatt	2,512	2,704	192	7.6
Nambour	1,442	1,494	52	3.6
Noosa	1,592	1,662	70	4.4
Nundah	1,485	1,584	99	6.7
Redcliffe	1,905	2,100	195	10.2
Stones Corner	2,426	2,616	190	7.8
Strathpine	1,314	1,419	105	8.0
Toowong	1,786	1,999	213	11.9
Wynnum	1,091	1,149	58	5.3
Other (a)	3	2	-1	%
<i>Total</i>	40,118	43,044	2,926	7.3

Note: For footnotes see end of table.

**TABLE 7 - JOBBEERS RECEIVING NEWSTART ALLOWANCE AND YOUTH ALLOWANCE  
(OTHER) BY AREA SUPPORT OFFICE AND CUSTOMER SERVICE CENTRE**

<i>Area Support Office and Customer Service Centre</i>	December 2003	January 2004	Variation	
			December - January Number	Per cent
<i>NORTH QUEENSLAND</i>				
Atherton	812	862	50	6.2
Ayr	481	660	179	37.2
Biloela	247	262	15	6.1
Bowen	543	641	98	18.0
Cairns	1,774	2,136	362	20.4
Cairns YAC	631	626	-5	-0.8
Cairns (Remote)	792	792	0	0.0
Charters Towers	386	403	17	4.4
Earlville	602	468	-134	-22.3
Edmonton	411	395	-16	-3.9
Emerald	361	335	-26	-7.2
Gladstone	1,219	1,274	55	4.5
Greenfields	8	9	1	%
Ingham	347	450	103	29.7
Innisfail	825	953	128	15.5
Mackay	2,801	3,171	370	13.2
Mareeba	485	506	21	4.3
Mossman	272	288	16	5.9
Mt Isa	1,086	1,157	71	6.5
Normanton	257	263	6	2.3
Rockhampton	3,150	3,379	229	7.3
Smithfield	605	637	32	5.3
Thursday Is	231	259	28	12.1
Townsville City*	543	171	-372	-68.5
Townsville Employment Services*	3,658	4,500	842	23.0
Townsville FAO*	18	27	9	%
Townsville Retirement*	63	44	-19	%
Townsville YSC	38	41	3	%
Whitsunday	497	536	39	7.8
Yeppoon	693	720	27	3.9
Other (a)	5	6	1	%
<i>Total</i>	23,841	25,971	2,130	8.9

Note: For footnotes see end of the table.

\*As of November 2003 the above offices have changed names. Townsville Employment Services was previously known as Aitkenvale (Centrepoint), Townsville FAO was previously known as Ross River (Elizabeth St) and Townsville Retirement was previously known as Willows.

Unemployment customers are being transferred from Townsville Retirement to Townsville Employment Services.

Townsville City is now an access point only and customers are being transferred within the Townsville area to the appropriate CSC's.

**TABLE 7 - JOBBEEKERS RECEIVING NEWSTART ALLOWANCE AND YOUTH ALLOWANCE  
(OTHER) BY AREA SUPPORT OFFICE AND CUSTOMER SERVICE CENTRE**

<i>Area Support Office and Customer Service Centre</i>	December 2003	January 2004	Variation	
			December - January Number	Per cent
<i>SOUTH AUSTRALIA</i>				
Berri	1,080	1,121	41	3.8
Broken Hill	1,090	1,175	85	7.8
Ceduna	186	220	34	18.3
Cooper Pedy	153	147	-6	-3.9
Currie St (Adelaide)	1,364	1,385	21	1.5
Currie St (Adelaide) SAC	1	0	-1	%
Edwardstown	2,500	2,779	279	11.2
Elizabeth	2,730	2,946	216	7.9
Enfield	1,805	1,965	160	8.9
Gawler	1,129	1,229	100	8.9
Glenelg	1,294	1,393	99	7.7
Kadina	630	690	60	9.5
Kilkenny	2,160	2,306	146	6.8
Modbury	2,191	2,363	172	7.9
Mt Barker	706	795	89	12.6
Mt Gambier	1,315	1,370	55	4.2
Murray Bridge	937	984	47	5.0
Noarlunga	3,036	3,309	273	9.0
Norwood	1,624	1,816	192	11.8
Parkside	910	1,006	96	10.5
Port Adelaide	1,775	1,947	172	9.7
Port Augusta	790	847	57	7.2
Port Lincoln	735	765	30	4.1
Port Pirie	1,134	1,254	120	10.6
Salisbury	2,780	3,064	284	10.2
Torrens ville	1,565	1,705	140	8.9
Victor Harbor	640	670	30	4.7
Whyalla	1,149	1,210	61	5.3
Other (a)	11	11	0	%
<i>Total</i>	37,420	40,472	3,052	8.2

Note: For footnotes see end of table.

**TABLE 7 - JOBSEEKERS RECEIVING NEWSTART ALLOWANCE AND YOUTH ALLOWANCE  
(OTHER) BY AREA SUPPORT OFFICE AND CUSTOMER SERVICE CENTRE**

<i>Area Support Office and Customer Service Centre</i>	December 2003	January 2004	Variation	
			December - January Number	Per cent
<i>WESTERN AUSTRALIA</i>				
Albany	1,387	1,535	148	10.7
Armadale	1,369	1,455	86	6.3
Bunbury	2,818	2,991	173	6.1
Cannington	2,128	2,246	118	5.5
Carnarvon	362	368	6	1.7
Centrelink City*	9	6	-3	%
Christmas Island	22	18	-4	%
Cocos Island	37	34	-3	%
Collie	6	7	1	%
Esperance	336	375	39	11.6
Fremantle	2,386	2,567	181	7.6
Geraldton	1,699	1,732	33	1.9
Gosnells	1,505	1,614	109	7.2
Innaloo	2,644	2,855	211	8.0
Joondalup	1,961	2,094	133	6.8
Kalgoorlie	815	876	61	7.5
Karratha	274	288	14	5.1
Kwinana*	100	80	-20	-20.0
Mandurah	1,778	1,862	84	4.7
Midland	2,370	2,527	157	6.6
Mirrabooka	2,632	2,865	233	8.9
Morley	3,346	3,548	202	6.0
Northam	587	626	39	6.6
Rockingham	2,242	2,411	169	7.5
South Hedland	370	365	-5	-1.4
Spearwood	1,572	1,625	53	3.4
Victoria Park	3,261	3,520	259	7.9
Warwick Grove	1,645	1,789	144	8.8
Other (a)	343	660	317	92.4
<i>Total</i>	40,004	42,939	2,935	7.3

Note: For footnotes see end of table.

\*As of 30 May 2003 Kwinana became a sub office of Rockingham.

\*From 30 June 2003 processes at Centerlink City, formerly known as Milligan Street, became limited to forms lodgement and quick general enquiries only.

**TABLE 7 - JOBBEERS RECEIVING NEWSTART ALLOWANCE AND YOUTH ALLOWANCE  
(OTHER) BY AREA SUPPORT OFFICE AND CUSTOMER SERVICE CENTRE**

<i>Area Support Office and Customer Service Centre</i>	December 2003	January 2004	Variation	
			December - January Number	Per cent
<i>TASMANIA</i>				
Bridgewater	1,246	1,258	12	1.0
Burnie	2,095	2,139	44	2.1
Devonport	2,276	2,313	37	1.6
Glenorchy	2,054	2,154	100	4.9
Hobart	2,494	2,575	81	3.2
Huonville	682	674	-8	-1.2
Launceston	5,058	5,147	89	1.8
Mowbray	12	17	5	%
Rosny Park *	1,450	1,487	37	2.6
Sorell	624	616	-8	-1.3
Other (a)	7	9	2	%
<i>Total</i>	17,998	18,389	391	2.2
<i>NORTH AUSTRALIA</i>				
Alice Springs	420	466	46	11.0
Alice Springs (Remote)	283	271	-12	-4.2
Broome	349	353	4	1.1
Casuarina	1,190	1,256	66	5.5
Casuarina YSC	11	4	-7	%
Derby	90	99	9	%
Katherine	395	399	4	1.0
Katherine (Remote)	78	86	8	%
Knuckey Street	688	718	30	4.4
Kununurra	165	180	15	9.1
Nhulunbuy	142	187	45	31.7
Palmerston	1,022	1,058	36	3.5
Tangentyere	386	390	4	1.0
Tennant Creek	129	128	-1	-0.8
Tennant Creek (Remote)	12	22	10	%
Other (a)	201	296	95	47.3
<i>Total</i>	5,561	5,913	352	6.3

Note: For footnotes see end of table.

**TABLE 7 - JOBBEERS RECEIVING NEWSTART ALLOWANCE AND YOUTH ALLOWANCE  
(OTHER) BY AREA SUPPORT OFFICE AND CUSTOMER SERVICE CENTRE**

<i>Area Support Office and Customer Service Centre</i>	December 2003	January 2004	Variation	
			December - January Number	Per cent
<i>PACIFIC CENTRAL</i>				
Ballina	1,320	1,417	97	7.3
Beaudesert	464	491	27	5.8
Beenleigh	1,953	2,035	82	4.2
Biggera Waters	1,967	2,029	62	3.2
Browns Plains	1,919	2,025	106	5.5
Brunswick Heads	868	905	37	4.3
Byron Bay	1,041	1,080	39	3.7
Casino	876	913	37	4.2
Charleville	206	231	25	12.1
Coffs Harbour	3,291	3,409	118	3.6
Dalby	901	914	13	1.4
Goodna	1,292	1,398	106	8.2
Goondiwindi	304	327	23	7.6
Grafton	1,961	2,099	138	7.0
Inala	1,609	1,744	135	8.4
Ipswich	2,579	2,762	183	7.1
Lightning Ridge	11	12	1	%
Lismore	2,556	2,736	180	7.0
Moree	707	756	49	6.9
Murwillumbah	824	873	49	5.9
Narrabri	458	491	33	7.2
Nerang	2,081	2,155	74	3.6
Palm Beach	2,836	2,888	52	1.8
Roma	182	206	24	13.2
Southport	3,215	3,386	171	5.3
Stanthorpe	18	17	-1	%
Toowoomba	3,166	3,348	182	5.7
Tweed Heads	1,958	2,026	68	3.5
Walgett	469	499	30	6.4
Warwick	1,183	1,252	69	5.8
Woodridge	2,581	2,675	94	3.6
Other (a)	26	24	-2	%
<i>Total</i>	44,822	47,123	2,301	5.1

Note: For footnotes see end of table.

**TABLE 7 - JOBBEERS RECEIVING NEWSTART ALLOWANCE AND YOUTH ALLOWANCE  
(OTHER) BY AREA SUPPORT OFFICE AND CUSTOMER SERVICE CENTRE**

<i>Area Support Office and Customer Service Centre</i>	December 2003	January 2004	Variation	
			December - January Number	Per cent
<i>CENTRELINK CALL CENTRES*</i>				
Adelaide	3	0	-3	%
Bendigo	1	1	0	%
Brisbane	2	1	-1	%
Bunbury	0	0	0	%
Cairns	0	0	0	%
Cardiff	3	3	0	%
Coffs Harbour	0	0	0	%
Geelong	0	0	0	%
Gosford	1	0	-1	%
Hobart	1	0	-1	%
Illawarra	0	0	0	%
Indigenous	1	0	-1	%
Latrobe	0	2	2	%
Liverpool	0	0	0	%
Maryborough	0	1	1	%
Moorabbin	0	0	0	%
Moreland	1	1	0	%
Perth	3	1	-2	%
Port Augusta	1	0	-1	%
Port Macquarie	2	1	-1	%
Sydney	0	0	0	%
Toowoomba	0	0	0	%
Townsville	3	2	-1	%
Warilla	0	0	0	%
Wendouree	1	0	-1	%
<i>Total</i>	23	13	-10	%
NOT CODED TO AN AREA	8	6	-2	%
<b>AUSTRALIA</b>	<b>440,118</b>	<b>470,352</b>	<b>30,234</b>	<b>6.9</b>

(a) Customers not coded to a Customer Service Centre.

% Monthly variations in percentage terms are not included where the Customer Service Centre has a population less than 100 in both of the reported months.

\*Jobseekers receiving NSA / YA (o) in the Centrelink Call Centres were previously counted in various Area Offices.

Note: The majority of figures in this publication are averages, and have been rounded. As a result, discrepancies may occur between sums of component items and totals. The discrepancies may also affect the calculation of the variations in Table 2, 3, 5 and 7.

**TABLE 8 - JOBSEEKERS RECEIVING NEWSTART ALLOWANCE AND YOUTH ALLOWANCE (OTHER)  
BY FORTNIGHTLY EARNINGS (%) AND SEX (a), FORTNIGHT TO 23 JANUARY 2004**

<i>Fortnightly Earnings</i>	Short-term Jobseekers	Long-term Jobseekers	Total Jobseekers
<b>MALES</b>			
Did not earn an income	87.8	85.9	86.7
Earned an income	12.2	14.1	13.3
Amount earned			
\$0.01 - \$62.00	1.1	1.6	1.4
\$62.01 - \$142.00	2.9	3.5	3.2
\$142.01 - \$236.00	2.4	2.8	2.7
\$236.01 - \$316.00	1.5	1.8	1.7
Over \$316.00	4.3	4.5	4.4
Total	100.0	100.0	100.0
<b><i>Jobseekers receiving NSA and YA (other)</i></b>	<b><i>130,370</i></b>	<b><i>181,293</i></b>	<b><i>311,663</i></b>
<b>FEMALES</b>			
Did not earn an income	80.0	76.8	78.1
Earned an income	20.0	23.2	21.9
Amount earned			
\$0.01 - \$62.00	1.7	2.3	2.1
\$62.01 - \$142.00	4.3	4.9	4.6
\$142.01 - \$236.00	3.9	4.5	4.3
\$236.01 - \$316.00	2.6	3.0	2.9
Over \$316.00	7.4	8.6	8.1
Total	100.0	100.0	100.0
<b><i>Jobseekers receiving NSA and YA (other)</i></b>	<b><i>64,553</i></b>	<b><i>96,438</i></b>	<b><i>160,991</i></b>
<b>PERSONS</b>			
Did not earn an income	85.2	82.7	83.8
Earned an income	14.8	17.3	16.2
Amount earned			
\$0.01 - \$62.00	1.3	1.8	1.6
\$62.01 - \$142.00	3.4	3.9	3.7
\$142.01 - \$236.00	2.9	3.4	3.2
\$236.01 - \$316.00	1.9	2.2	2.1
Over \$316.00	5.3	5.9	5.7
Total	100.0	100.0	100.0
<b><i>Jobseekers receiving NSA and YA (other)</i></b>	<b><i>194,923</i></b>	<b><i>277,731</i></b>	<b><i>472,654</i></b>

(a) Total figures in this table are different from Tables 2 to 7 because of different methodologies applied. Tables 2 to 7 are based on averages of weekly figures while this table is based on point in time data. See Explanatory Notes for further information.

## EXPLANATORY NOTES

### Introduction

This publication provides monthly statistical information on FaCS labour market and related payments administered by Centrelink. These Explanatory Notes provide details of the scope and methodology of the publication, as well as the policy changes which have affected the data since the publication was introduced in December 1995.

Prior to December 1995, this publication was titled the '*Monthly Job Search and Newstart Allowance Statistics*'.

### Scope

The primary focus of the publication is to provide information on unemployed people on Newstart Allowance and Youth Allowance, with a particular focus on the total number of jobseekers. The number of people on Mature Age Allowance, Partner Allowance and Widow Allowance are also reported.

### Methodology

Data in this publication relate to the average number of people who are both eligible (eg. meet 'unemployed' qualification) and entitled (eg. meet income and assets criteria) to receive a payment calculated over a reference month. Averages are calculated using figures collected for each Friday throughout the reference month.

Table 1 provides information on the total number of unemployed people on Newstart Allowance and Youth Allowance. The Youth Allowance population is split into Youth Allowance (full-time students) and Youth Allowance (other) categories. Numbers of people on Mature Age Allowance, Partner Allowance and Widow Allowance customers are also provided.

Tables 2 and 3 provide a summary of the Newstart Allowance and Youth Allowance (other) populations and show the derivation of the respective jobseeker populations (see the reference to *Jobseekers* in the Comparability of Data section of these Explanatory Notes). These populations are added together to derive the total number of jobseekers. Tables 4 to 8 provide information on the total jobseeker population.

The earnings data in Table 8 is derived using a different methodology to that of the other tables in the publication. Table 8 is based on the combined population of jobseekers who are eligible for and entitled to receive Newstart Allowance or Youth Allowance (other) at the end of the second last week in the month. Thus, the data obtained from this table will not be directly comparable with those calculated using monthly averages in other tables.

## Payment History

### *Youth Allowance*

From 1 July 1998 Youth Allowance was introduced to provide income support to young people, including students, those looking for work, and those who are sick. Youth Allowees may be undertaking full-time study, full-time job search or a combination of approved activities. Some young people will be exempt from the activity test because of their personal circumstances, eg. illness, homelessness or major personal crisis. The Youth Allowance replaced:

- AUSTUDY for 16-24 year olds (and certain 15 year olds);
- Newstart Allowance for 16-20 year olds (and certain 15 year olds);
- Youth Training Allowance for 16-17 year olds (and certain 15 year olds);
- Sickness Allowance for 16-20 year olds (and certain 15 year olds); and
- More-than-minimum rate Family Payment for secondary students aged 16-18 not getting AUSTUDY.

Youth Allowance customers are subject to the parental means test. Under previous arrangements, unemployed people aged 18 to 20 were not subject to the parental means test, unlike 18 to 20 year old students.

Special provisions applied for 18 to 20 year olds who were already on Newstart or Sickness Allowance at the date of announcement of Youth Allowance, and who remained on payment when Youth Allowance commenced on 1 July 1998. This group were able to remain on their existing payment and retain their existing benefits.

Youth Allowance had a significant downward effect on Newstart Allowance numbers from July 1998 and total jobseeker numbers due to the parental means test.

### *Newstart Allowance*

From 1 July 1998, Newstart Allowance for 16-20 year olds (and certain 15 year olds) was replaced by Youth Allowance. Young people aged 18 to 20 years old who were on Newstart or Sickness Allowance at the date of announcement of Youth Allowance, and when Youth Allowance commenced on 1 July 1998 were able to remain on Newstart Allowance.

From 20 September 1996, Job Search Allowance and Newstart Allowance were combined into one payment – Newstart Allowance – which was payable to eligible customers aged 18 years and over and to some people who were in receipt of Job Search Allowance and aged under 18 at 31 December 1994 (see *Job Search Allowance*).

Prior to 20 September 1996, Newstart Allowance was payable to eligible persons over 18 years who had been registered as unemployed with the CES for 12 months or more.

*Job Search Allowance* From 20 September 1996, the payment was combined with Newstart Allowance to form one payment called Newstart Allowance. All Job Search Allowance customers were transferred to Newstart Allowance.

Prior to 20 September 1996, Job Search Allowance was payable to eligible persons who had been registered as unemployed with the CES for up to 12 months. It was also payable to eligible persons who were in receipt of Job Search Allowance and under 18 years of age at 31 December 1994. Persons aged 15 to 18 years who were not receiving Job Search Allowance prior to 1 January 1995 commenced on Youth Training Allowance.

*Sickness Allowance* From 17 March 1996, persons in receipt of Newstart Allowance or Youth Training Allowance who became temporarily incapacitated no longer transferred to Sickness Allowance after 13 weeks. This change had the effect of increasing total Newstart Allowance/Youth Training Allowance figures but did not affect Jobseeker figures as those customers who were incapacitated were excluded from the Newstart and Youth Training Jobseeker populations.

Under current arrangements, these customers remain on their existing payments but are exempt from the activity test for the duration of their medical certificates. People who become unemployed because of illness, and those who suffer a potential loss of income due to sickness, are paid Newstart Allowance because they are unemployed.

Sickness Allowance for 16 to 20 year olds (and certain 15 year olds) has now been replaced by Youth Allowance, which was introduced on 1 July 1998 (see *Youth Allowance*).

*Partner Allowance* From 20 September 2003, Partner Allowance was closed off to new claimants. People on Partner Allowance before this date can remain on the allowance while they remain 'current', that is retain eligibility and entitlement for the allowance.

From 1 July 1995 Partner Allowance has only been granted to persons who are dependent partners of pensioners and allowees who were born before 1 July 1955, have no dependent children and have little or no recent workforce experience. Other dependent partners have to qualify for an income support payment in their own right, such as Newstart Allowance.

Partner Allowance was introduced in September 1994, and was paid to partners of persons receiving Job Search Allowance, Newstart Allowance, Sickness Allowance or Special Benefit if certain eligibility criteria were satisfied.

*Youth Training Allowance* Youth Training Allowance was replaced by Youth Allowance on 1 July 1998 (see *Youth Allowance*).

From 1 January 1995, eligible persons aged under 18 years who were new entrants to the job search pool were paid Youth Training Allowance. (People who were in receipt of Job Search Allowance and aged under 18 years at 31 December 1994 continued to be paid Job Search Allowance. From 20 September 1996, those young persons still being paid Job Search Allowance were transferred to Newstart Allowance.)

*Widow Allowance*

Widow Allowance, introduced in 1 January 1995, is payable to females aged 50 years or over who have become widowed, divorced or separated since turning 40 years (50 prior to 20 March 1997), if they meet a number of other criteria relating to current marital status and recent work experience. This has had a slight downwards effect on Newstart Allowance numbers from January 1995.

*Mature Age Allowance*

From 20 September 2003, Mature Age Allowance was closed off to new claimants. People on Mature Age Allowance before this date can remain on the allowance while they remain 'current', that is retain eligibility and entitlement for the allowance.

From 1 July 1996, the qualification conditions for Mature Age Allowance changed for new claimants. The requirement for 12 months prior receipt of income support was reduced to 9 months for people transferring from Newstart Allowance and removed entirely for people transferring from non-activity tested payments. The requirement to have been registered as unemployed for 12 months was replaced with a requirement to have no recent workforce experience. Reporting of these new claimants commenced from September 1996.

Mature Age Allowance was introduced on 24 March 1994, and was paid to long-term unemployed persons aged 60 years and over (but below Age Pension age) who had been receiving income support for 12 months or more and who were eligible for Newstart Allowance. The introduction of Mature Age Allowance has had a downwards effect on Newstart Allowance numbers from April 1994.

**Comparability of Data**

There have been significant changes to the data presented in this publication due to a number of events. The main changes are: the method of counting customers; the inclusion of some CDEP customers in the total customer numbers; the introduction of Youth Allowance in July 1998; the way 'jobseeker' is defined; and the way duration is calculated. People using this data to construct time series should note the following comments.

*Definition of Customer*

From July 2002, FaCS introduced a new method to more accurately measure the number of people receiving labour market and related payments. For those receiving labour market and related payments, their eligibility and entitlement

status is administered by a payment system called Newstart Common Platform System. Within this system customers who are both eligible and entitled to receive a payment have a determination status of 'current'. The new method therefore counts these 'current' customers.

The old method of counting customers was specified to include all paid customers – those who received a payment within a given fortnight. As compiled, however, this count excluded, from mid 1998, customers who received a 'one-off' payment. These can occur, for instance, when a normal payment is interrupted (eg. payment is cancelled and then restored within that pay period) and a portion of the normal payment is paid.

The time series in Tables 1 and 4 reflect the revised method, as does the remainder of the publication. Revised historical data for these time series back to May 1998 can be found in the July 2002 publication.

From July 2003 a more sustainable methodology was introduced for this revised customer count. Due to limitations in available data sources in 2002, the revised customer count had to be derived through a complicated process. This more sustainable methodology resulted in slight differences from the customer numbers used in previous editions.

*Community Development  
Employment Projects  
(CDEP)*

From 20 March 2000, eligible participants in CDEP started receiving CDEP participant supplement and other add-ons, such as rent assistance, as part of income support payments. This added a number of new customers to those who are normally eligible for payments reported in this publication.

*Introduction of  
Youth Allowance*

The sum of the number of Newstart Allowees and Youth Training Allowees prior to July 1998 is broadly comparable with the sum of Newstart Allowees and Youth Allowees (other) after July 1998. There are two main problems in comparing these two series. The first is the exclusion of some 18 to 20 year old unemployed people due to the application of the Youth Allowance parental means test (see the *Youth Allowance* section under Payment History). The second is the inclusion of Sickness Allowees in the Youth Allowance (other) population.

There is greater comparability between total Newstart Allowance and Youth Training Allowance Jobseekers prior to July 1998 and total Newstart Allowance and Youth Allowance (other) Jobseekers after July 1998. This is because the Sickness Allowance group is excluded from the jobseeker total. The problem, however, of the exclusion of some customers through the application of the Youth Allowance parental means test still remains.

*Jobseekers*

Prior to July 1998, the jobseeker category was defined by excluding all Newstart Allowees who did not receive a payment, customers who were incapacitated, and those receiving a payment who were

undertaking training. Some people who were not required to engage in job search were classified as jobseekers, including people undertaking full-time voluntary work, people on jury duty and pregnant women around the time of the birth of their child.

From July 1998, the definition of jobseekers has been placed on a sounder conceptual basis. It is now derived for Newstart Allowance and Youth Allowance (other) customers by excluding all people who did not receive a payment due to their own and/or their partner's income, or where applicable, their parent's, and all those known not to be required to search for work. People receiving Intensive Assistance under Job Network arrangements are classified as jobseekers although they may not always be undertaking job search. These people negotiate their activity agreement with their Job Network member.

The total number of jobseekers (comparable to pre-July 1998 estimates) is calculated by adding together the number of jobseekers in receipt of Newstart Allowance and Youth Allowance (other) – see the Explanatory Notes on *Youth Allowance*.

*Duration*

Following system changes in May 1998, duration has been defined according to the time a customer spends on income support – short-term customers are those who have been on income support for up to 12 months and long-term customers are those who have been on income support for 12 months or more.

Prior to 1998, duration was defined according to the time a customer was registered as unemployed – short-term customers were people who were registered as unemployed for up to 12 months and long-term customers were people who were registered for 12 months or more.

*Closure of Mature Age and Partner allowances*

From 20 September 2003, Mature Age Allowance and Partner Allowance were closed off to new claimants. People on these allowances before this date can remain on that allowance while they remain 'current', that is retain eligibility and entitlement for the allowance. The majority of people who would previously have claimed these payments will now claim Newstart Allowance.

**Symbols**

n.a. not available  
.. not applicable

## GLOSSARY

<b>Activity Test Status</b>	The activity that a Newstart Allowance or Youth Allowance (other) customer has agreed to undertake in order to meet the activity test. To satisfy the activity test customers must be actively seeking and willing to take up work or undertaking activities to improve their employment prospects.
<b>Age</b>	Age in years at time of data collection.
<b>Area Support Office</b>	A Centrelink office that supports a set of Customer Service Centres for a specified area. These are generally not confined to State boundaries.
<b>Centrelink Youth Service Centre</b>	A Centrelink Youth Service Centre consists of specialised staff who provide young people with improved access to Government services and income support. This is done by offering a mainstream FaCS service, as well as specialist case management to help access educational, labour market, job search, housing, health and general welfare assistance; and by providing a regular FaCS visiting service to youth via hostels, refuges and voluntary agencies.
<b>Community Development Employment Projects (CDEP)</b>	<p>The CDEP scheme is a program funded by the Aboriginal and Torres Strait Islander Commission (ATSIC). The scheme enables Aboriginal and Torres Strait Islander community councils and other approved Aboriginal and Torres Strait Islander groups to offer work to community members in activities that assist individuals in acquiring skills which benefit the community, develop business enterprises and/or lead to unsubsidised employment. The scheme also aims to develop management and business skills in an environment conducive to the principles of self-determination.</p> <p>The CDEP Participant Supplement (CPS) is payable to eligible CDEP participants. It can be paid fortnightly or as a 12 weekly payment.</p>
<b>Customer Service Centre</b>	A Customer Service Centre set within a particular region that provides FaCS and other payments and related information and services to customers. Customer Service Centres are managed by Area Support Offices.
<b>Did Not Receive a Payment</b>	Persons who did not receive a payment due to their own income and/or that of their partner, or parents, where applicable. This group is often referred to as 'zero-paid'.
<b>Eligibility and Payment Status</b>	Refer to the Methodology entry in the Explanatory Notes.
<b>Fortnightly Earnings</b>	Amount of income earned, derived, or received by a person for the person's own use or benefit in the previous fortnight.

<b>Incapacitated</b>	A person on Newstart Allowance or Youth Allowance (other) who has an activity test status indicating they are temporarily ill or incapacitated. Refer to the entry for Sickness Allowance in the Explanatory Notes.
<b>Jobseekers</b>	A person on Newstart Allowance or Youth Allowance (other) who would usually be engaged in jobsearch. See Explanatory Notes for definition and history.
<b>Job Search Allowance (JSA)</b>	Up to 20 September 1996, Job Search Allowance was payable to eligible persons who had been registered as unemployed with the CES for up to 12 months. From 20 September 1996, the payment was combined with Newstart Allowance to form one payment called Newstart Allowance. See Explanatory Notes for history.
<b>Long-term Customers</b>	Persons on Newstart Allowance or Youth Allowance who have been receiving income support for 12 months or more. Duration of long-term customers can be reset to zero if they exited from payments for more than 13 weeks.
<b>Mature Age Allowance (MAA)</b>	<p>From 20 September 2003, Mature Age Allowance was closed off to new claimants. People on Mature Age Allowance before this date can remain on the allowance while they remain 'current', that is retain eligibility and entitlement for the allowance.</p> <p>Mature Age Allowance, a non-activity-tested payment, is payable to unemployed people aged 60 years and over (but below Age Pension age) with little or no recent workforce experience who meet certain requirements for previous receipt of income support. See Explanatory Notes for history.</p>
<b>Newstart Allowance (NSA)</b>	Newstart Allowance is payable to eligible unemployed persons aged 21 years and over (but below Age Pension age) who satisfy the activity test. See Explanatory Notes for history.
<b>Newstart Common Platform System (NCP)</b>	The Newstart Common Platform System (NCP) was introduced in May 1998. The NCP administers all labour market and related payments. This includes primary payments such as Newstart Allowance, Youth Allowance, Mature Age Allowance, Widow Allowance and Partner Allowance. Other payments on the NCP include Special Benefit, Sickness Allowance, Exceptional Circumstances Relief, Farm Help and Austudy.
<b>Partner Allowance (PA)</b>	<p>From 20 September 2003, Partner Allowance was closed off to new claimants. People on Partner Allowance before this date can remain on the allowance while they remain 'current', that is retain eligibility and entitlement for the allowance.</p> <p>Partner Allowance, a non-activity-tested payment, is payable to persons who are dependent partners of pensioners and allowees who were born before 1 July 1955, have no dependent children and have little or no recent workforce experience. See Explanatory Notes for history.</p>

<b>Short-term Customers</b>	Persons on Newstart Allowance or Youth Allowance who have been receiving income support for less than 12 months. Duration of short-term customers can be reset to zero if they exited from payments for more than 6 weeks.
<b>States</b>	States and Territories of Australia derived from the postcode of the customer's residence as held on the Centrelink payment system.
<b>Widow Allowance (WA)</b>	Widow Allowance, a non-activity-tested payment, is payable to females aged 50 years or over who have become widowed, divorced or separated since turning 40 years if they have little or no recent work experience and meet a number of other criteria relating to current marital status. See Explanatory Notes for history.
<b>Youth Training Allowance (YTA)</b>	From 1 January 1995 eligible persons aged under 18 years who were registered as unemployed with the CES were paid Youth Training Allowance. From 1 July 1998, Youth Training Allowance was replaced by Youth Allowance. See Explanatory Notes for history.
<b>Youth Allowance (YA)</b>	<p>Youth Allowance is payable to eligible full-time students aged 16 to 25 years, and to eligible unemployed persons aged 16 to 21 years who satisfy the activity test. Note, there are certain exceptions for some 15 and 25 year olds. See Explanatory Notes for history.</p> <p>Youth Allowees may be undertaking full-time study, full-time job search or a combination of approved activities. Some young people will be exempt from the activity test because of their personal circumstances, eg. illness, homelessness or major personal crisis. See the Explanatory Notes for more information.</p>
<b>Youth Allowance (other)</b>	Youth Allowance customers who are not full-time students.
<b>Zero-Paid</b>	See 'Did Not Receive a Payment'.

## APPENDIX

### COMPARISONS BETWEEN FaCS LABOUR MARKET PAYMENT NUMBERS AND ABS UNEMPLOYMENT STATISTICS

<b>Official Statistics</b>	Official unemployment statistics are released by the Australian Bureau of Statistics (ABS). The ABS uses definitions recommended by the International Labour Office which have been accepted internationally as the most appropriate for the compilation of official statistics of unemployment.
<b>ABS Definition</b>	The ABS unemployment statistics measure the number of persons who, for a particular reference period, did not undertake any paid work, were actively looking for work and were available to start work.
<b>FaCS Labour Market Payment Statistics</b>	The labour market payment statistics give the number of persons who are both eligible and entitled to receive Newstart Allowance or Youth Allowance (other). The criteria for receipt of these payments do not match those the ABS uses to determine whether a person is classed as unemployed or employed for statistical purposes.
<b>Differences</b>	Care should be taken when comparing the ABS and FaCS labour market payment data. There are a number of reasons why the two series cannot be directly compared.
<i>Seasonal Adjustment</i>	The ABS produces a seasonally adjusted series. The FaCS statistics are not seasonally adjusted.
<i>Classification</i>	<p>The ABS classifies a person as unemployed if he or she is aged 15 years and over, was not employed during the week before the interview, has actively looked for full-time or part-time work and is available to start work.</p> <p>The Newstart Allowance and Youth Allowance (other) series generally count people who are eligible for and entitled to receive a payment between the ages of 15 years and 64 years in the case of men (excluding recipients of Mature Age Allowance) and 15 to 62 years in the case of women (excluding recipients of Mature Age, Partner, and Widow Allowances).</p>
<i>Employment</i>	Newstart Allowance and Youth Allowance (other) recipients may be employed part-time, but within an income test limit; the ABS classifies a person as "employed" if, among other things, he or she has worked for one hour or more during the survey period.

<i>Timing</i>	<p>The timing of collections of the series are different:</p> <p>FaCS reports monthly average numbers of people both eligible for and entitled to receive Newstart Allowance and Youth Allowance (other). These monthly averages are calculated using figures collected for each Friday throughout the reference month.</p> <p>ABS numbers are based on a sample interview survey of occupants of selected dwellings covering around 0.5% of the total Australian population. These persons are interviewed during the two weeks beginning the Monday between the 6th and 12th of each month and the information obtained is based on the week before the interview takes place.</p>
<i>Treatment of Partners</i>	<p>The ABS series includes unemployed persons whose spouse is working, irrespective of income, whereas Newstart Allowance and Youth Allowance (other) recipients are subject to an income and assets test for themselves and their spouse.</p>
<i>Pensioners</i>	<p>The ABS series includes persons being paid a pension but looking for work (eg sole parents in receipt of Parenting Payments looking for work).</p>
<i>Non-jobseekers</i>	<p>The overall Newstart Allowance and Youth Allowance (other) series includes persons who are not undertaking jobsearch. These persons are separately identified in Tables 2 and 3, and have then been excluded in subsequent tables. These people may be undertaking training, the development of self-employment opportunities, full-time voluntary work or a combination of voluntary and part-time work which excludes them from jobsearch obligations. They may also be incapacitated or have another temporary or permanent exemption from jobsearch.</p>
<i>Waiting Periods</i>	<p>The ABS series includes persons who are serving a waiting period before being granted Newstart Allowance or Youth Allowance (other), or whose allowance was deferred.</p>
<i>Survey</i>	<p>The ABS figures are derived from a Labour Force Survey which is a sample survey, whereas the FaCS statistics are a complete count of those both eligible for and entitled to receive Newstart Allowance and Youth Allowance (other).</p>

## FOR MORE INFORMATION ....

### **Labour Market Information**

Other statistics are available on recipients of FaCS labour market related payments on request.

In addition to Newstart and Youth Allowances, statistics are also available on Partner Allowance, Mature Age Allowance, Sickness Allowance, Special Benefit and Widow Allowance.

For further information please contact the Centrelink Knowledge Desk on (02) 6244 7270.

Written correspondence concerning this publication or statistics on FaCS labour market related payments should be addressed to:

Director  
Newstart Program Management and Policy Section  
Department of Family and Community Services  
CW3  
PO Box 7788  
Canberra Mail Centre ACT 2610

or forwarded via facsimile to (02) 6244 7978.

### **Other Customer Information**

Statistics are also available relating to other customers, including customer numbers and characteristics for the various FaCS Pension and Family Payments.

For further information please contact the Centrelink Knowledge Desk on (02) 6244 7270.

### **Other Statistical Outputs:**

The following statistical output is available on request:

*Commonwealth Department of Family and Community Services  
Customers - A Statistical Overview, 1996, 1997, 1998, 1999, 2000  
and 2001 - produced annually.*