

LABOUR MARKET AND RELATED PAYMENTS

a monthly profile

Note: The Australian Bureau of Statistics (ABS) produces the official unemployment statistics. The figures contained in this publication are different from the ABS unemployment figures as the ABS and the Department of Education, Employment and Workplace Relations (DEEWR) use different definitions to identify the unemployed and different methods of counting (see the Appendix for more information).

This publication can be found at <http://www.workplace.gov.au/lmrp>

November 2008

Embargoed

Until 11.30 am, 24 December 2008

Annual Subscription - \$65.00

CONTENTS

	<i>Page</i>
Introduction	1
Statistical Highlights	2
Tables	
1. Labour Market Payments - Time Series	3
2. Newstart Allowees - Derivation of the job seeker population	4
3. Youth Allowees (other) - Derivation of the job seeker population	5
4. Job seekers receiving Newstart Allowance and Youth Allowance (other) - Time Series	6
5. Job seekers receiving Newstart Allowance and Youth Allowance (other) by State	7
6. Job seekers receiving Newstart Allowance and Youth Allowance (other) by Age and Sex	8
7. Job seekers receiving Newstart Allowance and Youth Allowance (other) by Area Support Office and Customer Service Centre	9
8. Job seekers receiving Newstart Allowance and Youth Allowance (other) by Fortnightly Earnings and Sex	23
Explanatory Notes	24
Glossary	30
Appendix	33
For More Information	36

INTRODUCTION

This publication presents statistical information on a monthly basis for the various types of labour market payments delivered by Centrelink on behalf of the Department of Education, Employment and Workplace Relations (DEEWR). This publication was produced previously by the Department of Employment and Workplace Relations (DEWR).

This publication covers NSA and YA(o) in some detail, and to a lesser extent, MAA, PA, WA, YA(FTS) and YA (Australian Apprentices).

Table 1 provides information on the total number of NSA and YA recipients. The YA population is broken down into YA(o), YA(FTS) and YA(Australian Apprentices) categories. The total numbers of MAA, PA and WA recipients are also provided in this table.

Tables 2 and 3 show the derivation of the NSA and YA(o) job seeker populations (see the reference to job seekers in the 'Comparability of data' section of the Explanatory Notes). These populations are added together to derive the total number of job seekers.

Tables 4 to 8 provide information on the total job seeker population.

When using time series figures, it is important to note that changes have occurred over time to the conditions of eligibility for different payments. Details of these changes are provided in the Explanatory Notes.

All media inquiries should be directed to the Centrelink National Media Officer on (02) 6155 0067. For more general inquiries regarding further statistical information please refer to the last page of this publication for other contact details.

The next issue of this publication is scheduled for release on 28 January 2009.

STATISTICAL HIGHLIGHTS – November 2008

Between November 2007 and November 2008:

Total Newstart Allowance (NSA) recipients and Youth Allowance (other) (YA(o)) recipients **increased by 3.6%** overall from 484,135 to 501,323 and

- ◆ increased 3.1% for NSA from 424,168 to 437,270 and
- ◆ increased 6.8% for YA(o) from 59,967 to 64,053.

The number of job seekers **increased by 0.6%** overall from 286,471 to 288,158 and

- ◆ decreased 0.6% for NSA recipients from 240,440 to 238,991 and
- ◆ increased 6.8% for YA(o) recipients from 46,031 to 49,167.

Long-term job seekers decreased by 11.0% from 159,046 to 141,488.

Short-term job seekers increased by 15.1% from 127,425 to 146,670.

For comparisons between DEEWR unemployment labour market payment numbers and ABS labour force unemployment statistics, see Appendix.

**Newstart Allowance and Youth Allowance (other)
November 2006 to November 2008**

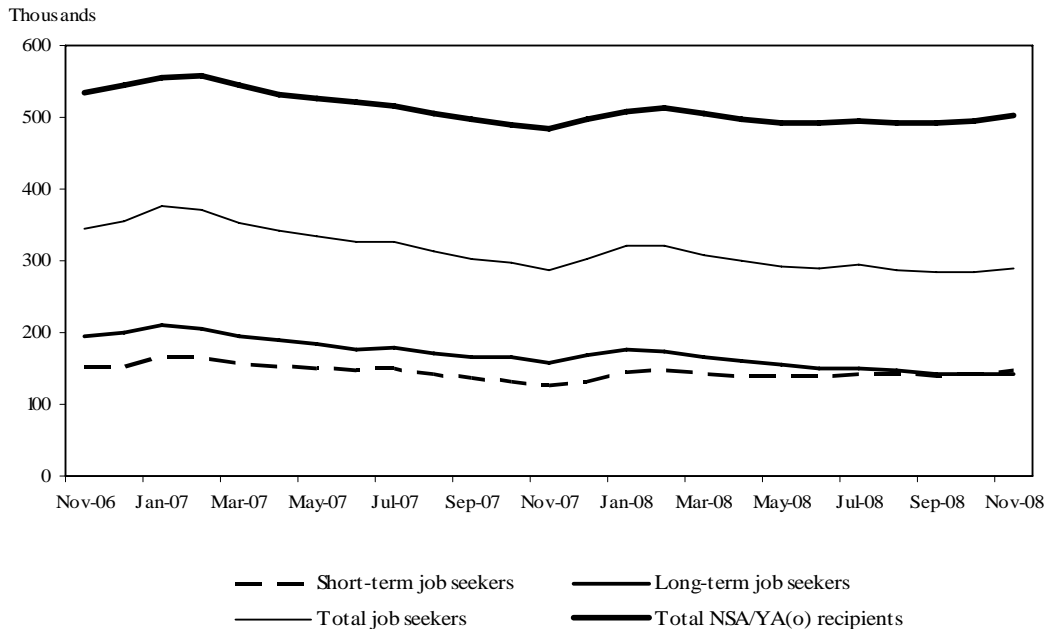


TABLE 1 - LABOUR MARKET PAYMENTS - TIME SERIES (a)

	Newstart Allowance		Youth Allowance			Mature Age Allowance	Partner Allowance	Widow Allowance
	Long-term (b)	Total	Other	Full-time Students (c)	Australian Apprentices (d)			
February 1994 (e)	472,785	977,796
November 2006	282,694	466,631	68,721	267,042	3,683	8,892	54,611	43,112
December 2006	284,499	469,233	76,480	226,902	3,571	8,293	53,398	42,903
January 2007	286,614	478,033	77,358	216,869	3,487	7,745	52,205	42,530
February 2007	286,113	481,343	76,036	223,780	3,715	7,287	51,251	42,370
March 2007	281,937	473,278	71,619	239,502	4,087	6,751	50,058	42,032
April 2007	277,688	463,732	68,746	250,660	4,250	6,235	48,912	41,619
May 2007	274,568	458,297	67,973	256,805	4,341	5,790	47,896	41,245
June 2007	271,439	452,733	67,852	261,197	4,435	5,284	46,709	40,886
July 2007	269,816	448,833	67,617	256,808	4,416	4,796	45,917	40,735
August 2007	267,972	442,112	63,717	263,166	4,490	4,381	45,459	40,853
September 2007	266,180	435,711	62,042	265,669	4,509	3,981	45,058	41,019
October 2007	264,434	429,811	59,920	264,829	4,350	3,619	44,695	41,156
November 2007	261,930	424,168	59,967	249,546	4,093	3,242	44,358	41,278
December 2007	264,127	428,962	69,320	215,158	3,956	2,868	43,997	41,400
January 2008	266,199	437,918	69,709	206,509	3,746	2,518	43,434	41,297
February 2008	266,368	443,916	69,728	213,384	3,897	2,149	42,512	41,014
March 2008	263,759	438,786	65,889	227,301	4,094	1,797	41,528	40,729
April 2008	260,541	433,674	63,680	236,930	4,274	1,503	40,708	40,503
May 2008	257,363	429,363	63,395	245,421	4,419	1,166	39,804	40,124
June 2008	255,550	428,896	63,972	252,180	4,444	856	38,915	39,702
July 2008	254,723	429,989	65,514	248,493	4,402	586	38,109	39,321
August 2008	253,131	429,459	63,347	254,853	4,256	307	37,226	38,946
September 2008	251,987	429,426	62,832	258,973	4,018	47	36,411	38,640
October 2008	251,529	431,546	62,227	259,337	3,882	0	35,572	38,375
November 2008	251,170	437,270	64,053	247,471	3,683	0	34,733	38,142
<i>Variation October 2008 - November 2008</i>								
Number	-359	5,724	1,826	-11,866	-199	0	-839	-233
Per cent	-0.1	1.3	2.9	-4.6	-5.1	0.0	-2.4	-0.6

(a) This table presents data using the revised method of measuring the number of people receiving labour market payments introduced in July 2002. Revised historical data from May 1998 to June 2002 is in Table A (May 1998 - June 2000) and Table 1 (July 2000 - July 2002) of July 2002 publication.

(b) Long-term Newstart allowees are persons who have been receiving income support for 12 months or more.

(c) The number of full time students does not include those who have traded in their entire Youth Allowance entitlement for a loan under the Student Financial Supplement Loan Scheme. The Government announced on 24 April 2003 that no further loans would be issued under this Scheme from 1 January 2004. For further details, refer to the Explanatory Notes at the back of this publication.

(d) Australian Apprenticeships combine employment with structured training to provide a nationally recognised qualification. Australian Apprentices enter formal agreements known as either 'Training Agreements' or 'Contracts of Training' which set out the relationship between the employer and the Australian Apprentice and their respective rights and responsibilities.

(e) February 1994 data has been included for comparison purposes due to the peak in the number of persons receiving JSA/NSA at this point in time.

Notes:

- Most of the figures in this publication are averages and have been rounded. As a result, discrepancies may occur between sums of component items and totals, and in the calculation of variations.

TABLE 2 - NEWSTART ALLOWEES - DERIVATION OF THE JOB SEEKER POPULATION

	October 2008	November			Variation October - November	
		Males	Females	Persons	Number	Per cent
Short-term NSA Customers	180,017	119,856	66,244	186,100	6,083	3.4
CPS recipients (a)	2,521	1,874	633	2,507	-14	-0.6
Did not receive a payment (b)	9,286	5,699	4,230	9,929	643	6.9
Received a payment	168,210	112,283	61,381	173,664	5,454	3.2
Incapacitated (c)	16,869	10,464	7,055	17,519	650	3.9
Training	14,498	9,630	5,240	14,870	372	2.6
Self-employment development (d)	601	364	237	601	0	0.0
Voluntary/part-time work (e)	5,070	1,707	3,536	5,243	173	3.4
Other/temporary exemptions (f)	14,548	8,698	6,415	15,113	565	3.9
Short-term NSA job seekers (g)	116,624	81,420	38,898	120,318	3,694	3.2
Long-term NSA Customers	251,529	144,685	106,485	251,170	-359	-0.1
CPS recipients (a)	6,281	4,226	2,037	6,263	-18	-0.3
Did not receive a payment (b)	8,251	4,402	4,608	9,010	759	9.2
Received a payment	236,997	136,057	99,840	235,897	-1,100	-0.5
Incapacitated (c)	17,108	9,290	7,996	17,286	178	1.0
Training	55,691	33,559	22,370	55,929	238	0.4
Self-employment development (d)	188	114	73	187	-1	-0.5
Voluntary/part-time work (e)	16,876	8,099	8,922	17,021	145	0.9
Other/temporary exemptions (f)	26,647	15,443	11,358	26,801	154	0.6
Long-term NSA job seekers (g)	120,487	69,552	49,121	118,673	-1,814	-1.5
All NSA Customers	431,546	264,541	172,729	437,270	5,724	1.3
CPS recipients (a)	8,802	6,100	2,670	8,770	-32	-0.4
Did not receive a payment (b)	17,537	10,101	8,838	18,939	1,402	8.0
Received a payment	405,207	248,340	161,221	409,561	4,354	1.1
Incapacitated (c)	33,977	19,754	15,051	34,805	828	2.4
Training	70,189	43,189	27,610	70,799	610	0.9
Self-employment development (d)	789	478	310	788	-1	-0.1
Voluntary/part-time work (e)	21,946	9,806	12,458	22,264	318	1.4
Other/temporary exemptions (f)	41,195	24,141	17,773	41,914	719	1.7
All NSA job seekers (g)	237,111	150,972	88,019	238,991	1,880	0.8

(a) Persons with NSA eligibility who received CDEP Participant Supplement or add ons while participating in CDEP Projects.

(b) Persons who did not receive a payment due to their income and/or that of their partner. This group is often referred to as zero-paid.

(c) Activity code "incapacitated" relates to NSA recipients who have become temporarily ill or incapacitated.

(d) Those customers exempted from job search while they develop self-employment opportunities.

(e) Those customers undertaking approved full-time voluntary work or combinations of voluntary and part-time work who are not required to seek work.

(f) Includes other customers known not to have job search obligations. See 'Job seekers' in Explanatory Notes.

(g) Those customers who received a payment and generally are required to search for work. These customers form the basis of the population group in Tables 4 - 7.

Notes:

- For information on short-term and long-term categories please refer to the Glossary.

- Most of the figures in this publication are averages and have been rounded. As a result, discrepancies may occur between sums of component items and totals, and in the calculation of variations.

TABLE 3 - YOUTH ALLOWEES (OTHER) - DERIVATION OF THE JOB SEEKER POPULATION

	October 2008	November			Variation October - November	
		Males	Females	Persons	Number	Per cent
Short-term YA (other) Customers	32,849	17,988	15,692	33,680	831	2.5
CPS recipients (a)	1,207	748	423	1,171	-36	-3.0
Did not receive a payment (b)	722	337	413	750	28	3.9
Received a payment	30,920	16,903	14,856	31,759	839	2.7
Part-time study & work (c)	2	2	1	3	1	50.0
Part-time study & other YA activities (d)	79	34	50	84	5	6.3
Incapacitated (e)	1,643	825	889	1,714	71	4.3
Training	1,652	991	696	1,687	35	2.1
Self-employment development (e)	6	6	5	11	5	83.3
Full-time voluntary work	0	0	0	0	0	0.0
Other non-job seekers (e)	1,908	839	1,069	1,908	0	0.0
Short-term YA (other) job seekers (f)	25,630	14,206	12,146	26,352	722	2.8
Long-term YA (other) Customers	29,378	14,280	16,093	30,373	995	3.4
CPS recipients (a)	833	539	281	820	-13	-1.6
Did not receive a payment (b)	859	371	509	880	21	2.4
Received a payment	27,686	13,370	15,303	28,673	987	3.6
Part-time study & work (c)	4	1	3	4	0	0.0
Part-time study & other YA activities (d)	70	35	32	67	-3	-4.3
Incapacitated (e)	1,094	439	686	1,125	31	2.8
Training	3,298	1,718	1,585	3,303	5	0.2
Self-employment development (e)	6	2	2	4	-2	-33.3
Full-time voluntary work	0	0	0	0	0	0.0
Other non-job seekers (e)	1,333	527	828	1,355	22	1.7
Long-term YA (other) job seekers (f)	21,881	10,648	12,167	22,815	934	4.3
All YA (other) Customers	62,227	32,268	31,785	64,053	1,826	2.9
CPS recipients (a)	2,040	1,287	704	1,991	-49	-2.4
Did not receive a payment (b)	1,581	708	922	1,630	49	3.1
Received a payment	58,606	30,273	30,159	60,432	1,826	3.1
Part-time study & work (c)	6	3	4	7	1	16.7
Part-time study & other YA activities (d)	149	69	82	151	2	1.3
Incapacitated (e)	2,737	1,264	1,575	2,839	102	3.7
Training	4,950	2,709	2,281	4,990	40	0.8
Self-employment development (e)	12	8	7	15	3	25.0
Full-time voluntary work	0	0	0	0	0	0.0
Other non-job seekers (e)	3,241	1,366	1,897	3,263	22	0.7
All YA (other) job seekers (f)	47,511	24,854	24,313	49,167	1,656	3.5

(a) Persons with YA eligibility who received CDEP Participant Supplement or add ons while participating in CDEP projects.

(b) Persons who did not receive a payment due to their own income and/or that of their partner or parents, where applicable. This group is often referred to as zero-paid.

(c) Those customers undertaking approved part-time study and work who are considered to have a full activity load and are not required to seek work.

(d) Those customers undertaking approved part-time study and other activities who are considered to have a full activity load and are not required to seek work.

(e) These categories are defined in the same way as in Table 2, except that those customers combining these activities with part-time study are classified under part-time study and other activities.

(f) Those customers who received a payment and generally are required to search for work. These customers form the basis of the population group in Tables 4 - 7.

Notes:

- For information on short-term and long-term categories please refer to the Glossary.

- Most of the figures in this publication are averages and have been rounded. As a result, discrepancies may occur between sums of component items and totals, and in the calculation of variations.

TABLE 4 - JOB SEEKERS RECEIVING NEWSTART ALLOWANCE AND YOUTH ALLOWANCE (OTHER)
TIME SERIES (a)

	Short-term	Long-term	Total
November 2006	152,125	193,719	345,844
December 2006	153,342	201,044	354,386
January 2007	165,924	209,395	375,319
February 2007	165,581	205,384	370,965
March 2007	157,827	195,351	353,178
April 2007	153,350	188,871	342,221
May 2007	151,083	183,234	334,317
June 2007	148,602	177,562	326,164
July 2007	149,043	178,467	327,510
August 2007	141,433	171,107	312,540
September 2007	136,186	166,762	302,948
October 2007	132,332	164,716	297,048
November 2007	127,425	159,046	286,471
December 2007	132,454	169,573	302,027
January 2008	145,046	177,005	322,051
February 2008	147,610	173,316	320,926
March 2008	141,568	165,748	307,316
April 2008	139,811	160,030	299,841
May 2008	138,808	154,313	293,121
June 2008	140,066	150,517	290,583
July 2008	143,050	150,831	293,881
August 2008	141,458	146,533	287,991
September 2008	140,447	143,357	283,804
October 2008	142,254	142,368	284,622
November 2008	146,670	141,488	288,158
<i>Variation October 2008 - November 2008</i>			
Number	4,416	-880	3,536
Per cent	3.1	-0.6	1.2

(a) This table presents data using the revised method of measuring the number of people receiving labour market payment introduced in July 2002. Revised historical data from May 1998 to June 2002 is in Table B of July 2002 publication.

Notes:

- For information on short-term and long-term categories please refer to the Glossary.

- Most of the figures in this publication are averages and have been rounded. As a result, discrepancies may occur between sums of component items and totals, and in the calculation of variations.

**TABLE 5 - JOB SEEKERS RECEIVING NEWSTART ALLOWANCE AND YOUTH ALLOWANCE (OTHER)
BY STATE**

<i>State</i>	October 2008	November 2008	Variation	
			October - November Number	Per cent
SHORT-TERM JOB SEEKERS				
New South Wales	49,520	50,968	1,448	2.9
Victoria	32,920	33,691	771	2.3
Queensland	28,329	30,008	1,679	5.9
South Australia	11,534	11,612	78	0.7
Western Australia	11,774	12,133	359	3.0
Tasmania	4,147	4,299	152	3.7
Northern Territory	2,795	2,733	-62	-2.2
Australian Capital Territory	1,235	1,226	-9	-0.7
AUSTRALIA	142,254	146,670	4,416	3.1
LONG-TERM JOB SEEKERS				
New South Wales	53,148	52,794	-354	-0.7
Victoria	33,043	32,806	-237	-0.7
Queensland	20,912	21,002	90	0.4
South Australia	13,680	13,505	-175	-1.3
Western Australia	8,973	8,946	-27	-0.3
Tasmania	5,795	5,705	-90	-1.6
Northern Territory	5,730	5,642	-88	-1.5
Australian Capital Territory	1,087	1,088	1	0.1
AUSTRALIA	142,368	141,488	-880	-0.6
TOTAL JOB SEEKERS				
New South Wales	102,668	103,762	1,094	1.1
Victoria	65,963	66,497	534	0.8
Queensland	49,241	51,010	1,769	3.6
South Australia	25,214	25,117	-97	-0.4
Western Australia	20,747	21,079	332	1.6
Tasmania	9,942	10,004	62	0.6
Northern Territory	8,525	8,375	-150	-1.8
Australian Capital Territory	2,322	2,314	-8	-0.3
AUSTRALIA	284,622	288,158	3,536	1.2

Notes:

- Most of the figures in this publication are averages and have been rounded. As a result, discrepancies may occur between sums of component items and totals, and in the calculation of variations.

**TABLE 6 - JOB SEEKERS RECEIVING NEWSTART ALLOWANCE AND YOUTH ALLOWANCE (OTHER)
BY AGE AND SEX, AS AT NOVEMBER 2008**

Age	Short-term job seekers		Long-term job seekers		Total job seekers	
	Number	Per cent	Number	Per cent	Number	Per cent
MALES						
Less than 18 years	4,677	4.9	2,265	2.8	6,942	3.9
18 - 20 years	9,528	10.0	8,383	10.5	17,911	10.2
21 - 24 years	15,119	15.8	9,364	11.7	24,483	13.9
25 - 29 years	15,337	16.0	9,771	12.2	25,108	14.3
30 - 39 years	22,932	24.0	17,242	21.5	40,174	22.8
40 - 49 years	15,118	15.8	14,265	17.8	29,383	16.7
50 - 59 years	9,202	9.6	11,815	14.7	21,017	12.0
60 years and over	3,713	3.9	7,096	8.8	10,809	6.1
Total	95,626	100.0	80,201	100.0	175,827	100.0
FEMALES						
Less than 18 years	4,781	9.4	2,869	4.7	7,650	6.8
18 - 20 years	7,365	14.4	9,297	15.2	16,662	14.8
21 - 24 years	8,291	16.2	7,037	11.5	15,328	13.6
25 - 29 years	5,497	10.8	5,012	8.2	10,509	9.4
30 - 39 years	7,948	15.6	9,525	15.5	17,473	15.6
40 - 49 years	8,702	17.0	13,009	21.2	21,711	19.3
50 - 59 years	6,612	13.0	11,048	18.0	17,660	15.7
60 years and over	1,848	3.6	3,490	5.7	5,338	4.8
Total	51,044	100.0	61,287	100.0	112,331	100.0
PERSONS						
Less than 18 years	9,458	6.4	5,134	3.6	14,592	5.1
18 - 20 years	16,893	11.5	17,680	12.5	34,573	12.0
21 - 24 years	23,410	16.0	16,401	11.6	39,811	13.8
25 - 29 years	20,834	14.2	14,783	10.4	35,617	12.4
30 - 39 years	30,880	21.1	26,767	18.9	57,647	20.0
40 - 49 years	23,820	16.2	27,274	19.3	51,094	17.7
50 - 59 years	15,814	10.8	22,863	16.2	38,677	13.4
60 years and over	5,561	3.8	10,586	7.5	16,147	5.6
Total	146,670	100.0	141,488	100.0	288,158	100.0

**TABLE 7 - JOB SEEKERS RECEIVING NEWSTART ALLOWANCE AND YOUTH ALLOWANCE
(OTHER) BY AREA SUPPORT OFFICE AND CUSTOMER SERVICE CENTRE**

<i>Area Support Office and Customer Service Centre</i>	October 2008	November 2008	Variation	
			October - November Number	Per cent
<i>SYDNEY EAST NEW SOUTH WALES</i>				
Bankstown	2,748	2,854	106	3.9
Bondi Junction	877	916	39	4.4
Burwood	1,269	1,332	63	5.0
Campsie	2,091	2,125	34	1.6
Caringbah	938	946	8	0.9
Chatswood	612	675	63	10.3
Corrimal	945	961	16	1.7
Dapto	1,058	1,081	23	2.2
Darlinghurst	1,258	1,308	50	4.0
Darlinghurst CCU	30	34	4	%
Haymarket	0	1	1	%
Hornsby	645	683	38	5.9
Hurstville	1,061	1,100	39	3.7
Lakemba	23	20	-3	%
Leichhardt	971	1,011	40	4.1
Maroubra	1,099	1,119	20	1.8
Marrickville	1,188	1,171	-17	-1.4
Northern Beaches	856	908	52	6.1
Participation Sydney East	5	5	0	%
Redfern	1,011	1,039	28	2.8
Revesby	7	9	2	%
Rockdale	1,023	1,080	57	5.6
Ryde	670	718	48	7.2
Shellharbour	1,249	1,261	12	1.0
Sutherland	320	344	24	7.5
Wollongong	1,254	1,327	73	5.8
Other (a)	9	10	1	%
Total	23,217	24,038	821	3.5

Note: For footnotes see end of table.

**TABLE 7 - JOB SEEKERS RECEIVING NEWSTART ALLOWANCE AND YOUTH ALLOWANCE
(OTHER) BY AREA SUPPORT OFFICE AND CUSTOMER SERVICE CENTRE**

<i>Area Support Office and Customer Service Centre</i>	October 2008	November 2008	Variation	
			October - November Number	Per cent
<i>SYDNEY WEST NEW SOUTH WALES</i>				
Auburn	1,804	1,824	20	1.1
Baulkham Hills	530	571	41	7.7
Blacktown	2,502	2,505	3	0.1
Cabramatta	1,673	1,728	55	3.3
Camden	545	565	20	3.7
Campbelltown	1,817	1,797	-20	-1.1
Fairfield	2,514	2,501	-13	-0.5
Hawkesbury	755	785	30	4.0
Ingleburn	1,155	1,140	-15	-1.3
Katoomba	607	632	25	4.1
Liverpool	3,008	3,080	72	2.4
Merrylands	1,476	1,524	48	3.3
Mt Druitt	2,425	2,458	33	1.4
Parramatta	1,453	1,520	67	4.6
Penrith	1,552	1,614	62	4.0
Springwood	304	297	-7	-2.3
St Marys	1,303	1,294	-9	-0.7
Other (a)	22	19	-3	%
Total	25,445	25,854	409	1.6

Note: For footnotes see end of table.

**TABLE 7 - JOB SEEKERS RECEIVING NEWSTART ALLOWANCE AND YOUTH ALLOWANCE
(OTHER) BY AREA SUPPORT OFFICE AND CUSTOMER SERVICE CENTRE**

<i>Area Support Office and Customer Service Centre</i>	October 2008	November 2008	Variation	
			October - November Number	Per cent
HUNTER NEW SOUTH WALES				
Armidale	784	769	-15	-1.9
Cessnock	792	777	-15	-1.9
Charlestown	1,661	1,681	20	1.2
Ettalong	818	834	16	2.0
Glen Innes	229	226	-3	-1.3
Gosford	1,443	1,474	31	2.1
Gunnedah	393	394	1	0.3
Inverell	615	613	-2	-0.3
Kempsey	893	866	-27	-3.0
Kurri Kurri	403	408	5	1.2
Lakehaven	1,484	1,536	52	3.5
Maitland	1,378	1,377	-1	-0.1
Mayfield	894	845	-49	-5.5
Muswellbrook	399	419	20	5.0
Nambucca Heads	779	771	-8	-1.0
Nelson Bay	450	442	-8	-1.8
Newcastle	1,116	1,101	-15	-1.3
Port Macquarie	1,374	1,403	29	2.1
Raymond Terrace	826	841	15	1.8
Singleton	251	253	2	0.8
Tamworth	1,541	1,535	-6	-0.4
Taree	1,647	1,636	-11	-0.7
The Entrance	1,172	1,154	-18	-1.5
Toronto	829	816	-13	-1.6
Tuncurry (Forster)	839	821	-18	-2.1
Wallsend	1,229	1,248	19	1.5
Wyong	706	705	-1	-0.1
Other (a)	31	35	4	%
Total	24,976	24,980	4	0.0

Note: For footnotes see end of table.

**TABLE 7 - JOB SEEKERS RECEIVING NEWSTART ALLOWANCE AND YOUTH ALLOWANCE
(OTHER) BY AREA SUPPORT OFFICE AND CUSTOMER SERVICE CENTRE**

<i>Area Support Office and Customer Service Centre</i>	October 2008	November 2008	Variation	
			October - November Number	Per cent
<i>SOUTH WEST NEW SOUTH WALES</i>				
Batemans Bay	835	852	17	2.0
Bathurst	882	873	-9	-1.0
Bega	680	673	-7	-1.0
Belconnen	663	645	-18	-2.7
Bowral	429	420	-9	-2.1
Braddon	699	693	-6	-0.9
Cooma	283	288	5	1.8
Cowra	449	433	-16	-3.6
Dubbo	1,904	1,867	-37	-1.9
Goulburn	687	670	-17	-2.5
Griffith	550	534	-16	-2.9
Gungahlin	76	68	-8	%
Lanyon	31	36	5	%
Leeton	327	331	4	1.2
Lithgow	526	522	-4	-0.8
Mudgee	622	640	18	2.9
Narooma	365	379	14	3.8
Nowra	1,932	1,940	8	0.4
Orange	949	933	-16	-1.7
Parkes	867	851	-16	-1.8
Queanbeyan	394	382	-12	-3.0
Tuggeranong	497	512	15	3.0
Tumut	272	258	-14	-5.1
Ulladulla	521	507	-14	-2.7
Wagga	1,379	1,342	-37	-2.7
Woden	361	353	-8	-2.2
Yass	89	87	-2	%
Young	389	401	12	3.1
Other (a)	16	17	1	%
Total	17,674	17,507	-167	-0.9

Note: For footnotes see end of table.

**TABLE 7 - JOB SEEKERS RECEIVING NEWSTART ALLOWANCE AND YOUTH ALLOWANCE
(OTHER) BY AREA SUPPORT OFFICE AND CUSTOMER SERVICE CENTRE**

<i>Area Support Office and Customer Service Centre</i>	October 2008	November 2008	Variation	
			October - November Number	Per cent
<i>NORTH CENTRAL VICTORIA</i>				
Airport West	766	783	17	2.2
Albury	1,888	1,895	7	0.4
Box Hill	1,369	1,356	-13	-0.9
Broadmeadows	2,975	2,993	18	0.6
Camberwell	639	646	7	1.1
Darebin	2,527	2,510	-17	-0.7
Deniliquin	279	282	3	1.1
Echuca	414	434	20	4.8
Epping	1,389	1,397	8	0.6
Greensborough	69	46	-23	%
Heidelberg	1,047	1,127	80	7.6
Moreland	1,453	1,477	24	1.7
Newmarket	942	957	15	1.6
Seymour	528	534	6	1.1
Shepparton	1,882	1,844	-38	-2.0
South Melbourne	507	496	-11	-2.2
Sunbury	565	570	5	0.9
Wangaratta	1,360	1,351	-9	-0.7
Windsor	1,695	1,720	25	1.5
Yarra	1,289	1,308	19	1.5
Other (a)	19	18	-1	%
Total	23,602	23,744	142	0.6

Note: For footnotes see end of table.

**TABLE 7 - JOB SEEKERS RECEIVING NEWSTART ALLOWANCE AND YOUTH ALLOWANCE
(OTHER) BY AREA SUPPORT OFFICE AND CUSTOMER SERVICE CENTRE**

<i>Area Support Office and Customer Service Centre</i>	October 2008	November 2008	Variation	
			October - November Number	Per cent
<i>SOUTH EAST VICTORIA</i>				
Bairnsdale	720	708	-12	-1.7
Belgrave	332	311	-21	-6.3
Cheltenham	1,128	1,193	65	5.8
Cranbourne	908	919	11	1.2
Dandenong	2,033	2,033	0	0.0
Fountain Gate	1,379	1,407	28	2.0
Frankston	1,941	1,949	8	0.4
Glen Waverley	640	686	46	7.2
Hastings	411	405	-6	-1.5
Lilydale	1,153	1,138	-15	-1.3
Mornington	338	344	6	1.8
Morwell	2,018	2,055	37	1.8
Oakleigh	1,165	1,203	38	3.3
Pakenham	422	424	2	0.5
Ringwood	1,234	1,275	41	3.3
Rosebud	824	814	-10	-1.2
Rowville	299	321	22	7.4
Sale	642	649	7	1.1
Springvale	1,457	1,466	9	0.6
Wantirna	848	851	3	0.4
Warragul	503	491	-12	-2.4
Wonthaggi	432	418	-14	-3.2
Other (a)	8	9	1	%
Total	20,835	21,069	234	1.1

Note: For footnotes see end of table.

**TABLE 7 - JOB SEEKERS RECEIVING NEWSTART ALLOWANCE AND YOUTH ALLOWANCE
(OTHER) BY AREA SUPPORT OFFICE AND CUSTOMER SERVICE CENTRE**

<i>Area Support Office and Customer Service Centre</i>	October 2008	November 2008	Variation	
			October - November Number	Per cent
WEST VICTORIA				
Ararat	197	199	2	1.0
Ballarat	2,198	2,246	48	2.2
Bendigo	2,120	2,123	3	0.1
Bendigo Central	353	366	13	3.7
Colac	422	414	-8	-1.9
Corio	1,377	1,338	-39	-2.8
Footscray	1,125	1,107	-18	-1.6
Geelong	2,420	2,449	29	1.2
Hamilton	365	343	-22	-6.0
Horsham	486	494	8	1.6
Maryborough	362	360	-2	-0.6
Melton	965	981	16	1.7
Mildura	1,523	1,543	20	1.3
Newport	825	846	21	2.5
Portland	296	296	0	0.0
Stawell	172	170	-2	-1.2
Sunshine	2,131	2,168	37	1.7
Swan Hill	770	764	-6	-0.8
Warrnambool	742	745	3	0.4
Watergardens	2,454	2,488	34	1.4
Werribee	2,251	2,268	17	0.8
Other (a)	6	6	0	%
Total	23,560	23,714	154	0.7

Note: For footnotes see end of table.

**TABLE 7 - JOB SEEKERS RECEIVING NEWSTART ALLOWANCE AND YOUTH ALLOWANCE
(OTHER) BY AREA SUPPORT OFFICE AND CUSTOMER SERVICE CENTRE**

<i>Area Support Office and Customer Service Centre</i>	October 2008	November 2008	Variation	
			October - November Number	Per cent
CENTRAL & NORTHERN QUEENSLAND				
Atherton	552	578	26	4.7
Ayr	266	283	17	6.4
Bamaga RASC (Nth Peninsula RASC)	26	27	1	%
Biloela	137	135	-2	-1.5
Bowen	228	259	31	13.6
Cairns Families	3	4	1	%
Cairns Jobseekers	2,749	2,856	107	3.9
Cairns Remote (Indigenous ISC)	553	563	10	1.8
Cairns Seniors & Carers	6	3	-3	%
Charters Towers	220	233	13	5.9
Edmonton	0	0	0	%
Emerald	211	216	5	2.4
Gladstone	636	653	17	2.7
Greenfields	0	1	1	%
Ingham	200	206	6	3.0
Innisfail	458	474	16	3.5
Longreach	68	72	4	%
Mackay Jobseekers	889	907	18	2.0
Mackay Seniors & Carers	1	2	1	%
Mareeba	402	420	18	4.5
Mossman	321	319	-2	-0.6
Mt Isa	686	695	9	1.3
Normanton	123	129	6	4.9
Palm Island	308	305	-3	-1.0
Rockhampton Families	0	0	0	%
Rockhampton Jobseekers	1,458	1,506	48	3.3
Rockhampton Seniors & Carers	3	2	-1	%
Smithfield	0	0	0	%
Thursday Island	244	247	3	1.2
Townsville City	2	2	0	%
Townsville Families	0	0	0	%
Townsville Jobseekers	2,058	2,115	57	2.8
Townsville Seniors & Carers	3	4	1	%
Western Cape RASC	208	225	17	8.2
Whitsunday	236	235	-1	-0.4
Yarrabah RASC	296	320	24	8.1
Yeppoon	270	261	-9	-3.3
Other (a)	35	55	20	%
Total	13,856	14,312	456	3.3

Note: For footnotes see end of the table.

**TABLE 7 - JOB SEEKERS RECEIVING NEWSTART ALLOWANCE AND YOUTH ALLOWANCE
(OTHER) BY AREA SUPPORT OFFICE AND CUSTOMER SERVICE CENTRE**

<i>Area Support Office and Customer Service Centre</i>	October 2008	November 2008	Variation	
			October - November Number	Per cent
<i>SOUTH & EAST QUEENSLAND</i>				
Bundaberg	2,309	2,304	-5	-0.2
Caboolture	1,415	1,550	135	9.5
Caboolture FCC and SC&R	0	0	0	%
Caloundra	683	720	37	5.4
Cherbourg	94	101	7	%
Chermside	676	694	18	2.7
Fortitude Valley	779	820	41	5.3
Gympie	895	940	45	5.0
Hervey Bay	1,066	1,110	44	4.1
Kawana Waters	330	351	21	6.4
Kingaroy	578	576	-2	-0.3
Kippa-Ring	663	698	35	5.3
Maroochydore	908	995	87	9.6
Maryborough	927	953	26	2.8
Mitchelton	641	663	22	3.4
Nambour	636	697	61	9.6
Noosa	619	635	16	2.6
Nundah	657	691	34	5.2
Strathpine	710	757	47	6.6
Toowong	499	510	11	2.2
Other (a)	304	352	48	15.8
Total	15,389	16,117	728	4.7

Note: For footnotes see end of table.

**TABLE 7 - JOB SEEKERS RECEIVING NEWSTART ALLOWANCE AND YOUTH ALLOWANCE
(OTHER) BY AREA SUPPORT OFFICE AND CUSTOMER SERVICE CENTRE**

<i>Area Support Office and Customer Service Centre</i>	October 2008	November 2008	Variation	
			October - November Number	Per cent
<i>SOUTH & WEST QUEENSLAND</i>				
Beenleigh	1,313	1,382	69	5.3
Browns Plains	1,088	1,115	27	2.5
Capalaba	415	461	46	11.1
Charleville	179	170	-9	-5.0
Cleveland	556	583	27	4.9
Dalby	418	410	-8	-1.9
Goodna	770	790	20	2.6
Goondiwindi	280	261	-19	-6.8
Inala	947	959	12	1.3
Ipswich	1,593	1,618	25	1.6
Mt Gravatt	1,066	1,063	-3	-0.3
Roma	121	122	1	0.8
South Brisbane	601	609	8	1.3
Stanthorpe	346	339	-7	-2.0
Stones Corner	928	947	19	2.0
Toowoomba	1,671	1,652	-19	-1.1
Warwick	382	391	9	2.4
Woodridge	1,219	1,252	33	2.7
Wynnum	594	601	7	1.2
Other (a)	23	18	-5	%
Total	14,510	14,743	233	1.6

Note: For footnotes see end of table.

**TABLE 7 - JOB SEEKERS RECEIVING NEWSTART ALLOWANCE AND YOUTH ALLOWANCE
(OTHER) BY AREA SUPPORT OFFICE AND CUSTOMER SERVICE CENTRE**

<i>Area Support Office and Customer Service Centre</i>	October 2008	November 2008	Variation	
			October - November Number	Per cent
<i>SOUTH AUSTRALIA</i>				
Berri	830	833	3	0.4
Broken Hill	776	788	12	1.5
Ceduna	258	240	-18	-7.0
Coober Pedy	144	146	2	1.4
Currie Street	455	448	-7	-1.5
Elizabeth	2,198	2,207	9	0.4
Enfield	1,264	1,284	20	1.6
Gawler	912	869	-43	-4.7
Glenelg	644	645	1	0.2
Kadina	584	547	-37	-6.3
Kilkenny	1,444	1,407	-37	-2.6
Marion	1,516	1,517	1	0.1
Modbury	1,379	1,410	31	2.2
Mt Barker	492	498	6	1.2
Mt Gambier	1,082	1,068	-14	-1.3
Murray Bridge	721	732	11	1.5
Noarlunga	2,303	2,280	-23	-1.0
Norwood	1,250	1,253	3	0.2
Port Adelaide	1,290	1,296	6	0.5
Port Augusta	678	669	-9	-1.3
Port Lincoln	578	598	20	3.5
Port Pirie	778	760	-18	-2.3
Salisbury	2,121	2,123	2	0.1
Torrensville	1,035	1,049	14	1.4
Victor Harbor	519	519	0	0.0
Whyalla	650	633	-17	-2.6
Other (a)	34	35	1	%
Total	25,935	25,854	-81	-0.3

Note: For footnotes see end of table.

**TABLE 7 - JOB SEEKERS RECEIVING NEWSTART ALLOWANCE AND YOUTH ALLOWANCE
(OTHER) BY AREA SUPPORT OFFICE AND CUSTOMER SERVICE CENTRE**

<i>Area Support Office and Customer Service Centre</i>	October 2008	November 2008	Variation	
			October - November Number	Per cent
WEST AUSTRALIA				
Albany	747	734	-13	-1.7
Armadale	683	689	6	0.9
Bunbury	1,273	1,281	8	0.6
Busselton	209	228	19	9.1
Cannington	1,039	1,075	36	3.5
Carnarvon	286	275	-11	-3.8
Cocos Islands	43	41	-2	%
Collie	5	2	-3	%
Community Team Perth	85	91	6	%
Curtin on Campus SSC	10	11	1	%
Esperance	243	238	-5	-2.1
Fremantle	919	944	25	2.7
Fremantle SACC	1	3	2	%
Fremantle SSC	0	0	0	%
Geraldton	1,077	1,053	-24	-2.2
Gosnells	744	735	-9	-1.2
Innaloo	866	900	34	3.9
Joondalup	1,018	1,061	43	4.2
Joondalup SACC	2	1	-1	%
Joondalup SSC	1	1	0	%
Kalgoorlie	579	621	42	7.3
Karratha	240	261	21	8.8
Laverton RASC	59	53	-6	%
Mandurah	943	931	-12	-1.3
Meekatharra RASC	196	209	13	6.6
Midland	1,494	1,547	53	3.5
Mirrabooka	1,273	1,291	18	1.4
Morley	1,272	1,287	15	1.2
Morley - Dewar Street	1	2	1	%
Morley SSC	0	0	0	%
Newman RASC	186	180	-6	-3.2
Northam	429	429	0	0.0
Rockingham	1,115	1,155	40	3.6
South Hedland	391	390	-1	-0.3
Spearwood	632	656	24	3.8
Victoria Park	1,240	1,226	-14	-1.1
Warwick Grove	476	483	7	1.5
Other (a)	25	28	3	%
Total	19,802	20,112	310	1.6

Note: For footnotes see end of table.

**TABLE 7 - JOB SEEKERS RECEIVING NEWSTART ALLOWANCE AND YOUTH ALLOWANCE
(OTHER) BY AREA SUPPORT OFFICE AND CUSTOMER SERVICE CENTRE**

<i>Area Support Office and Customer Service Centre</i>	October 2008	November 2008	Variation	
			October - November Number	Per cent
TASMANIA				
Bridgewater	596	600	4	0.7
Burnie	1,155	1,125	-30	-2.6
Devonport	1,319	1,338	19	1.4
Glenorchy	1,482	1,522	40	2.7
Hobart	1,109	1,121	12	1.1
Huonville	384	373	-11	-2.9
Launceston	2,705	2,710	5	0.2
Mowbray	9	13	4	%
Rosny Park	791	820	29	3.7
Sorell	401	413	12	3.0
Other (a)	50	47	-3	%
Total	10,001	10,082	81	0.8
NORTH AUSTRALIA				
Alice Springs	2,595	2,519	-76	-2.9
Borroloola RASC	37	42	5	%
Broome	455	452	-3	-0.7
Casuarina	747	742	-5	-0.7
Derby	148	158	10	6.8
Fitzroy Crossing RASC	45	50	5	%
Halls Creek RASC	198	203	5	2.5
Katherine	1,314	1,280	-34	-2.6
Knuckey Street	389	371	-18	-4.6
Kununurra	209	227	18	8.6
Maningrida	358	352	-6	-1.7
Nhulunbuy	699	682	-17	-2.4
Palmerston	668	684	16	2.4
Tangentyere	82	83	1	%
Tennant Creek	181	195	14	7.7
Tennant Creek Remote	86	79	-7	%
Tiwi Islands RASC	222	230	8	3.6
Top End Remote	733	757	24	3.3
Wadeye RASC	368	308	-60	-16.3
Yuendumu RASC	128	132	4	3.1
Other (a)	35	41	6	%
Total	9,697	9,587	-110	-1.1

Note: For footnotes see end of table.

**TABLE 7 - JOB SEEKERS RECEIVING NEWSTART ALLOWANCE AND YOUTH ALLOWANCE
(OTHER) BY AREA SUPPORT OFFICE AND CUSTOMER SERVICE CENTRE**

<i>Area Support Office and Customer Service Centre</i>	October 2008	November 2008	Variation	
			October - November Number	Per cent
PACIFIC CENTRAL				
Ballina	843	895	52	6.2
Beaudesert	309	326	17	5.5
Biggera Waters	1,218	1,290	72	5.9
Bourke	458	460	2	0.4
Brunswick Heads	469	464	-5	-1.1
Byron Bay	450	481	31	6.9
Casino	504	512	8	1.6
Coffs Harbour	2,026	2,042	16	0.8
Grafton	1,320	1,299	-21	-1.6
Lightning Ridge	189	184	-5	-2.6
Lismore	1,394	1,372	-22	-1.6
Maclean	0	0	0	%
Moree	455	446	-9	-2.0
Murwillumbah	443	450	7	1.6
Narrabri	341	320	-21	-6.2
Nerang	1,162	1,239	77	6.6
Palm Beach	1,479	1,590	111	7.5
Robina SCR	4	6	2	%
Southport	1,593	1,638	45	2.8
Tweed Heads	1,067	1,100	33	3.1
Walgett	272	275	3	1.1
Other (a)	43	41	-2	%
Total	16,039	16,430	391	2.4
OTHER				
Centrelink Call Centres (b)	78	65	-13	%
Not coded to an area	5	4	-1	%
Rounding adjustment (c)	1	-54	-55	%
AUSTRALIA	284,622	288,158	3,536	1.2

(a) Recipients not coded to a Customer Service Centre.

(b) Job seekers receiving NSA / YA (o) in Centrelink Call Centres which are not counted in the various Area Offices.

(c) Prior to the July 2007 publication, the rounding adjustment was included in the Fairfield CSC.

Notes:

- Where the Customer Service Centre has a population less than 100 in either of the reported months, the monthly percentage variation has been suppressed and replaced with the percentage symbol '%'. .

- Most of the figures in this publication are averages and have been rounded. As a result, discrepancies may occur between sums of component items and totals, and in the calculation of variations.

- From July 2007, new Area Support Office boundaries came into effect. A concordance between the new and old Area structures is provided in Table A in the July 2007 edition of this publication.

**TABLE 8 - JOB SEEKERS RECEIVING NEWSTART ALLOWANCE AND YOUTH ALLOWANCE (OTHER)
FORTNIGHTLY EARNINGS (%) AND SEX (a), FORTNIGHT ENDING 21 NOVEMBER 2008**

<i>Fortnightly Earnings</i>	Short-term job seekers	Long-term job seekers	Total job seekers
MALES			
Did not earn an income	84.9	81.3	83.2
Earned an income	15.1	18.7	16.8
Amount earned			
\$0.01-\$62.00	0.6	0.8	0.7
\$62.01-\$142.00	2.2	2.5	2.3
\$142.01-\$236.00	2.6	3.0	2.8
\$236.01-\$316.00	1.9	2.3	2.1
Over \$316.00	7.9	10.2	9.0
Total	100.0	100.0	100.0
<i>Job seekers receiving NSA and YA (other)</i>	<i>96,017</i>	<i>80,156</i>	<i>176,173</i>
FEMALES			
Did not earn an income	74.6	69.8	72.0
Earned an income	25.4	30.2	28.0
Amount earned			
\$0.01-\$62.00	0.9	1.0	1.0
\$62.01-\$142.00	3.0	3.2	3.1
\$142.01-\$236.00	3.7	4.0	3.8
\$236.01-\$316.00	3.0	3.3	3.2
Over \$316.00	14.8	18.8	17.0
Total	100.0	100.0	100.0
<i>Job seekers receiving NSA and YA (other)</i>	<i>51,254</i>	<i>61,327</i>	<i>112,581</i>
PERSONS			
Did not earn an income	81.3	76.3	78.9
Earned an income	18.7	23.7	21.1
Amount earned			
\$0.01-\$62.00	0.7	0.9	0.8
\$62.01-\$142.00	2.4	2.8	2.6
\$142.01-\$236.00	3.0	3.4	3.2
\$236.01-\$316.00	2.3	2.7	2.5
Over \$316.00	10.3	13.9	12.1
Total	100.0	100.0	100.0
<i>Job seekers receiving NSA and YA (other)</i>	<i>147,271</i>	<i>141,483</i>	<i>288,754</i>

(a) Total figures in this table are different from Tables 2 to 7 because of different methodologies applied. Tables 2 to 7 are based on averages of weekly figures while this table is based on point in time data. See Explanatory Notes for further information.

EXPLANATORY NOTES

Introduction

This publication provides monthly statistical information on DEEWR labour market and related payments delivered by Centrelink. These Explanatory Notes provide details of the scope and methodology of the publication, as well as the policy changes which have affected the data since the publication was introduced in December 1995 by the then Department of Social Security.

Prior to December 1995, this publication was titled the *Monthly Job Search and Newstart Allowance Statistics*.

Scope

The primary focus of the publication is to provide information on unemployed people on Newstart Allowance and Youth Allowance, with a particular focus on the total number of job seekers. The number of people on Mature Age Allowance, Partner Allowance and Widow Allowance are also reported.

Methodology

Data in this publication relate to the average number of people who are both eligible (eg. meet 'unemployed' qualification) and entitled (eg. meet income and assets criteria) to receive a payment calculated over a reference month. Averages are calculated using figures collected for each Friday throughout the reference month.

Table 1 provides information on the total number of unemployed people on Newstart Allowance and Youth Allowance. The Youth Allowance population is split into Youth Allowance (full-time students), Youth Allowance (Australian Apprentices) and Youth Allowance (other) categories. Numbers of people on Mature Age Allowance, Partner Allowance and Widow Allowance are also provided.

Tables 2 and 3 provide a summary of the Newstart Allowance and Youth Allowance (other) populations and show the derivation of the respective job seeker populations (see the reference to job seekers in the Comparability of Data section of these Explanatory Notes). These populations are added together to derive the total number of job seekers. Tables 4 to 8 provide information on the total job seeker population.

The earnings data in Table 8 is derived using a different methodology from that of the other tables in the publication. Table 8 is based on the combined population of job seekers who are eligible for and entitled to receive Newstart Allowance or Youth Allowance (other) at the end of the second last week in the month. Thus, the data obtained from this table will not be directly comparable with those calculated using monthly averages in other tables.

Payment History

Youth Allowance

From 1 July 1998 Youth Allowance was introduced to provide income support to young people, including students, those looking for work, and those who are sick. Youth Allowees may be undertaking full-time study, full-time job search or a combination of approved activities. Some young people will be exempt from the activity test because of their personal circumstances, eg. illness, homelessness or major personal crisis. The Youth Allowance replaced:

- AUSTUDY for 16-24 year olds (and certain 15 year olds);
- Newstart Allowance for 16-20 year olds (and certain 15 year olds);
- Youth Training Allowance for 16-17 year olds (and certain 15 year olds);
- Sickness Allowance for 16-20 year olds (and certain 15 year olds); and
- More-than-minimum rate Family Payment for secondary students aged 16-18 not getting AUSTUDY.

Youth Allowance recipients are subject to the parental means test. Under previous arrangements, unemployed people aged 18 to 20 were not subject to the parental means test, unlike 18 to 20 year old students.

Special provisions applied for 18 to 20 year olds who were already on Newstart or Sickness Allowance at the date of announcement of Youth Allowance, and who remained on payment when Youth Allowance commenced on 1 July 1998. This group were able to remain on their existing payment and retain their existing benefits.

Youth Allowance had a significant downward effect on Newstart Allowance numbers from July 1998 and total job seeker numbers due to the parental means test.

Newstart Allowance

From 1 July 1998, Newstart Allowance for 16-20 year olds (and certain 15 year olds) was replaced by Youth Allowance. Young people aged 18 to 20 years old who were on Newstart or Sickness Allowance at the date of announcement of Youth Allowance and when Youth Allowance commenced on 1 July 1998, were able to remain on Newstart Allowance.

From 20 September 1996, Job Search Allowance and Newstart Allowance were combined into one payment - Newstart Allowance - which was payable to eligible recipients aged 18 years and over and to some people who were in receipt of Job Search Allowance and aged under 18 at 31 December 1994 (see Job Search Allowance).

Prior to 20 September 1996, Newstart Allowance was payable to eligible persons over 18 years who had been registered as unemployed with the Commonwealth Employment Service (CES) for 12 months or more.

<i>Job Search Allowance</i>	<p>From 20 September 1996, the payment was combined with Newstart Allowance to form one payment called Newstart Allowance. All Job Search Allowance recipients were transferred to Newstart Allowance.</p> <p>Prior to 20 September 1996, Job Search Allowance was payable to eligible persons who had been registered as unemployed with the CES for up to 12 months. It was also payable to eligible persons who were in receipt of Job Search Allowance and under 18 years of age at 31 December 1994. Persons aged 15 to 18 years who were not receiving Job Search Allowance prior to 1 January 1995 commenced on Youth Training Allowance.</p>
<i>Sickness Allowance</i>	<p>From 17 March 1996, persons in receipt of Newstart Allowance or Youth Training Allowance who became temporarily incapacitated no longer transferred to Sickness Allowance after 13 weeks. This change had the effect of increasing total Newstart Allowance/Youth Training Allowance figures but did not affect job seeker figures as those recipients who were incapacitated were excluded from the Newstart and Youth Training job seeker populations.</p> <p>Under current arrangements, these recipients remain on their existing payments but are exempt from the activity test for the duration of their medical certificates. People who become unemployed because of illness, and those who suffer a potential loss of income due to sickness, are paid Newstart Allowance because they are unemployed.</p> <p>Sickness Allowance for 16 to 20 year olds (and certain 15 year olds) was replaced by Youth Allowance, which was introduced on 1 July 1998 (see Youth Allowance).</p>
<i>Partner Allowance</i>	<p>From 20 September 2003, Partner Allowance was closed to new claimants. People on Partner Allowance before this date can remain on the allowance while they remain 'current', that is retain eligibility and entitlement for the allowance.</p> <p>From 1 July 1995 Partner Allowance has only been granted to persons who are dependent partners of pensioners and allowees and who were born before 1 July 1955, have no dependent children and have little or no recent workforce experience. Other dependent partners have to qualify for an income support payment in their own right, such as Newstart Allowance.</p> <p>Partner Allowance was introduced in September 1994, and was paid to partners of persons receiving Job Search Allowance, Newstart Allowance, Sickness Allowance or Special Benefit if certain eligibility criteria were satisfied.</p>
<i>Youth Training Allowance</i>	<p>Youth Training Allowance was replaced by Youth Allowance on 1 July 1998 (see Youth Allowance).</p> <p>From 1 January 1995, eligible persons aged under 18 years who were new entrants to the job search pool were paid Youth Training Allowance. (People who were in receipt of Job Search</p>

Allowance and aged under 18 years at 31 December 1994 continued to be paid Job Search Allowance. From 20 September 1996, those young persons still being paid Job Search Allowance were transferred to Newstart Allowance.)

Widow Allowance Widow Allowance, introduced on 1 January 1995, is payable to females aged 50 years or over who have become widowed, divorced or separated since turning 40 years (50 prior to 20 March 1997), if they meet a number of other criteria relating to current marital status and recent work experience. This has had a slight downwards effect on Newstart Allowance numbers from January 1995.

Mature Age Allowance From 20 September 2003, Mature Age Allowance was closed to new claimants. People on Mature Age Allowance before this date can remain on the allowance while they remain 'current', that is retain eligibility and entitlement for the allowance.

From 1 July 1996, the qualification conditions for Mature Age Allowance changed for new claimants. The requirement for 12 months prior receipt of income support was reduced to 9 months for people transferring from Newstart Allowance and removed entirely for people transferring from non-activity tested payments. The requirement to have been registered as unemployed for 9 months was replaced with a requirement to have no recent workforce experience. Reporting of these new claimants commenced from September 1996.

Mature Age Allowance was introduced on 24 March 1994, and was paid to long-term unemployed persons aged 60 years and over (but below Age Pension age) who had been receiving income support for 9 months or more and who were eligible for Newstart Allowance. The introduction of Mature Age Allowance had a downwards effect on Newstart Allowance numbers from April 1994 until September 2003.

Comparability of Data

There have been significant changes to the data presented in this publication due to a number of events. The main changes are:

- the method of counting recipients;
- the inclusion of some CDEP recipients in the total recipient numbers;
- the introduction of Youth Allowance in July 1998;
- the way 'job seeker' is defined; and
- the way duration is calculated.

People using this data to construct time series should note the following comments.

Definition of Recipient From July 2002, the Department of Family and Community Services (FaCS) introduced a new method to more accurately measure the number of people receiving labour market and related payments. For those receiving labour market and related payments, their eligibility and entitlement status is administered by a payment system called Newstart Common Platform System. Within this system recipients who are both eligible and entitled to receive a payment have a determination status of 'current'.

The new method therefore counts these 'current' recipients.

The old method of counting recipients was specified to include all paid recipients - those who received a payment within a given fortnight. As compiled, however, this count excluded, from mid 1998, recipients who received a 'one-off' payment. These can occur, for instance, when a normal payment is interrupted (eg. payment is cancelled and then restored within that pay period) and a portion of the normal payment is paid.

The time series in Tables 1 and 4 reflect the revised method, as does the remainder of the publication. Revised historical data for these time series from May 1998 to June 2002 can be found in the July 2002 publication.

From July 2003 FaCS introduced a more sustainable methodology for this revised recipient count. Due to limitations in available data sources in 2002, the revised recipient count had to be derived through a complicated process. This more sustainable methodology resulted in slight differences from the recipient numbers used in previous editions.

*Community Development
Employment Projects
(CDEP)* From 20 March 2000, eligible participants in CDEP started receiving CDEP participant supplement and other add-ons, such as rent assistance, as part of income support payments. This added a number of new recipients to those eligible for payments reported in this publication.

*Introduction of
Youth Allowance* The sum of the number of Newstart Allowees and Youth Training Allowees prior to July 1998 is broadly comparable with the sum of Newstart Allowees and Youth Allowees (other) after July 1998. There are two main problems in comparing these two series. The first is the exclusion of some 18 to 20 year old unemployed people due to the application of the Youth Allowance parental means test (see the Youth Allowance section under Payment History). The second is the inclusion of Sickness Allowees in the Youth Allowance (other) population.

There is greater comparability between total Newstart Allowance and Youth Training Allowance job seekers prior to July 1998 and total Newstart Allowance and Youth Allowance (other) job seekers after July 1998. This is because the Sickness Allowance group is excluded from the job seeker total. The problem, however, of the exclusion of some recipients through the application of the Youth Allowance parental means test still remains.

Job seekers Prior to July 1998, the job seeker category was defined by excluding all Newstart Allowees who did not receive a payment, recipients who were incapacitated, and those receiving a payment who were undertaking training. Some people who were not required to engage in job search were classified as job seekers, including people undertaking full-time voluntary work, people on jury duty and pregnant women around the time of the birth of their child.

From July 1998, the definition of job seekers has been placed on a sounder conceptual basis. It is now derived for Newstart Allowance and Youth Allowance (other) recipients by excluding all people who did not receive a payment due to their own and/or their partner's income, or where applicable, parental income, and all those known not to be required to search for work. People receiving Intensive Support Customised Assistance under Job Network arrangements are classified as job seekers although they may not always be undertaking job search. These people negotiate their activity agreement with their Job Network member.

The total number of job seekers (comparable to pre-July 1998 estimates) is calculated by adding together the number of job seekers in receipt of Newstart Allowance and Youth Allowance (other) - see the Explanatory Notes on Youth Allowance.

Duration

Following system changes in May 1998, duration has been defined according to the time a recipient spends on income support - short-term recipients are those who have been on income support for up to 12 months and long-term recipients are those who have been on income support for 12 months or more.

Prior to 1998, duration was defined according to the time a recipient was registered as unemployed - short-term recipients were people who were registered as unemployed for up to 12 months and long-term recipients were people who were registered for 12 months or more.

Closure of Mature Age and Partner Allowances

From 20 September 2003, Mature Age Allowance and Partner Allowance were closed to new claimants. People on these allowances before this date can remain on that allowance while they remain 'current', that is retain eligibility and entitlement for the allowance. The majority of people who would previously have claimed these payments will now claim Newstart Allowance.

Symbols

n.a. not available
 .. not applicable

GLOSSARY

Activity test status	The activity that a Newstart Allowance or Youth Allowance (other) recipient has agreed to undertake in order to meet the activity test. To satisfy the activity test recipients must be actively seeking and willing to take up work or undertaking activities to improve their employment prospects.
Age	Age in years at time of data collection.
Area Support Office	A Centrelink office that supports a set of Customer Service Centres for a specified area. These are generally not confined to State boundaries.
Community Development Employment Projects (CDEP)	<p>The CDEP programme is administered by the Department of Families, Housing, Community Services and Indigenous Affairs (FaHCSIA) from December 2007 and was previously administered by the Department of Employment and Workplace Relations (DEWR). CDEP provides unemployed Indigenous people with activities designed to meet community needs and which develop participants' skills and improve their employability in order to assist them to move to employment outside the CDEP organisation. These activities can also lead to the development of business enterprises.</p> <p>The CDEP Participant Supplement (CPS) is payable to eligible CDEP participants. It can be paid fortnightly or as a 12 weekly payment.</p>
Customer Service Centre	A Customer Service Centre set within a particular region that provides FaHCSIA, DEEWR and other payments and related information and services to recipients. Customer Service Centres are managed by Area Support Offices.
Did not receive a payment	Persons who did not receive a payment due to their own income and/or that of their partner, or parents, where applicable. This group is often referred to as 'zero paid'.
Eligibility and payment status	Refer to the Methodology entry in the Explanatory Notes.
Fortnightly earnings	Amount of income earned, derived, or received by a person for the person's own use or benefit in the previous fortnight.
Incapacitated	A person on Newstart Allowance or Youth Allowance (other) who has an activity test status indicating they are temporarily ill or incapacitated. Refer to the entry for Sickness Allowance in the Explanatory Notes.
Job seekers	A person on Newstart Allowance or Youth Allowance (other) who would usually be engaged in jobsearch. See Explanatory Notes for definition and history.

Job Search Allowance (JSA)	Up to 20 September 1996, Job Search Allowance was payable to CES eligible persons who had been registered as unemployed with the CES for up to 12 months. From 20 September 1996, the payment was combined with Newstart Allowance to form one payment called Newstart Allowance. See Explanatory Notes for history.
Long-term recipients	Persons on Newstart Allowance or Youth Allowance who have been receiving income support for 12 months or more. Duration of long-term recipients can be reset to zero if they exited from payments for more than 13 weeks.
Mature Age Allowance (MAA)	From 20 September 2003, Mature Age Allowance was closed to new claimants. People on Mature Age Allowance before this date can remain on the allowance while they remain 'current', that is retain eligibility and entitlement for the allowance. Mature Age Allowance, a non-activity-tested payment, is payable to unemployed people aged 60 years and over (but below Age Pension age) with little or no recent workforce experience who meet certain requirements for previous receipt of income support. See Explanatory Notes for history.
Newstart Allowance (NSA)	Newstart Allowance is payable to eligible unemployed persons aged 21 years and over (but below Age Pension age) who satisfy the activity test. See Explanatory Notes for history.
Newstart Common Platform System (NCP)	The Newstart Common Platform System (NCP) was introduced in May 1998. The NCP administers all labour market and related payments. This includes primary payments such as Newstart Allowance, Youth Allowance, Mature Age Allowance, Widow Allowance and Partner Allowance. Other payments on the NCP include Special Benefit, Sickness Allowance, Exceptional Circumstances Relief, Farm Help and Austudy.
Partner Allowance (PA)	<p>From 20 September 2003, Partner Allowance was closed to new claimants. People on Partner Allowance before this date can remain on the allowance while they remain 'current', that is retain eligibility and entitlement for the allowance.</p> <p>Partner Allowance, a non-activity-tested payment, is payable to persons who are dependent partners of pensioners and allowees and who were born before 1 July 1955, have no dependent children and have little or no recent workforce experience. See Explanatory Notes for history.</p>
Short-term recipients	Persons on Newstart Allowance or Youth Allowance who have been receiving income support for less than 12 months. Duration of short-term recipients can be reset to zero if they exited from payments for more than 6 weeks.
States	States and Territories of Australia derived from the postcode of the recipient's residence as held on the Centrelink payment system.

Widow Allowance (WA)	<p>From 1 July 2005 Widow Allowance was closed to new claimants, unless the woman was born on or before 1 July 1955.</p> <p>Widow Allowance, a non-activity tested payment, is payable to females aged 50 years or over who have become widowed, divorced or separated since turning 40 years if they have little or no recent work experience and meet a number of other criteria relating to current marital status. See Explanatory Notes for history.</p>
Youth Training Allowance (YTA)	<p>From 1 January 1995 eligible persons aged under 18 years who were registered as unemployed with the CES were paid Youth Training Allowance. From 1 July 1998, Youth Training Allowance was replaced by Youth Allowance. See Explanatory Notes for history.</p>
Youth Allowance (YA)	<p>Youth Allowance is payable to eligible full-time students aged 16 to 25 years, and to eligible unemployed persons aged 16 to 20 years who satisfy the activity test. Note, there are certain exceptions for some 15 and 25 year olds. See Explanatory Notes for history.</p> <p>Youth Allowees may be undertaking full-time study, full-time job search or a combination of approved activities. Some young people will be exempt from the activity test because of their personal circumstances, eg. illness, homelessness or major personal crisis. See the Explanatory Notes for more information.</p>
Youth Allowance (other)	<p>Youth Allowance recipients who are not full-time students or full-time Australian Apprentices.</p>
Zero paid	<p>See 'Did not receive a payment'.</p>

APPENDIX

COMPARISONS BETWEEN DEEWR UNEMPLOYMENT LABOUR MARKET PAYMENT NUMBERS AND ABS LABOUR FORCE UNEMPLOYMENT STATISTICS

Official statistics	Official unemployment statistics are released by the Australian Bureau of Statistics (ABS). The ABS uses definitions recommended by the International Labour Office which have been accepted internationally as the most appropriate for the compilation of official statistics of unemployment.
ABS definition	The ABS unemployment statistics measure the number of persons who, for a particular reference period, did not undertake any paid work, were actively looking for work and were available to start work.
DEEWR Unemployment Labour Market Payment Statistics	The labour market payment statistics give the number of persons who are both eligible and entitled to receive Newstart Allowance or Youth Allowance (other). The criteria for receipt of these payments do not match those the ABS uses to determine whether a person is classed as unemployed or employed for statistical purposes.
Differences	Care should be taken when comparing the ABS labour force and DEEWR labour market payment data. There are a number of reasons why the two series cannot be directly compared.
<i>Duration</i>	<p>Both DEEWR and the ABS classify long-term duration as over 12 months, but use substantially different definitions of duration:</p> <p>DEEWR measures duration of income support. This includes not just time on unemployment benefits but time on any income support payment.</p> <p>The ABS measures length of time unemployed using their unemployment definition.</p> <p>DEEWR unemployed recipients can have breaks without payment for up to 25 weeks but still be classified as long-term income support recipients:</p> <ul style="list-style-type: none">• Recipients who do not receive a payment due to their earnings can have up to 12 weeks without a payment before they are automatically cancelled. This reduces disincentives to accept short-term work.• Long-term recipients can have another 13 weeks off payment after payment is cancelled and still keep their long-term status if they return to income support. This means they keep access to assistance such as the Employment Entry Payment and the higher payment rate for recipients over 60.

For the ABS statistics, any hours of work for a period as short as two weeks count as a break from unemployment and so are enough to reset a person's unemployment duration.

The difference between these two concepts, together with the fact that DEEWR recipients are able to have ongoing part-time work (see 'employment' below) mean that many unemployed recipients remain classified by DEEWR as long-term recipients when they would be classified as short-term unemployed under the ABS definition.

<i>Seasonal adjustment</i>	The ABS produces a seasonally adjusted series. The DEEWR labour market payment numbers data are not seasonally adjusted.
<i>Classification</i>	<p>The ABS classifies a person as unemployed if he or she is aged 15 years and over, was not employed during the week before the interview, has actively looked for full-time or part-time work and is available to start work. From February 2004, people who had not actively looked for work because they were waiting to start a job within four weeks are also classified as unemployed.</p> <p>The Newstart Allowance and Youth Allowance (other) series generally count people who are eligible for and entitled to receive a payment between the ages of 15 years and 64 years in the case of men and 15 to 63 years in the case of women.</p>
<i>Employment</i>	Newstart Allowance and Youth Allowance (other) recipients may be employed part-time, but within an income test limit; the ABS classifies a person as "employed" if, among other things, he or she has worked for one hour or more during the survey period.
<i>Timing</i>	<p>The timing of collections of the series are different:</p> <ul style="list-style-type: none">• DEEWR reports monthly average numbers of people both eligible for and entitled to receive Newstart Allowance and Youth Allowance (other). These monthly averages are calculated using figures collected for each Friday throughout the reference month.• ABS numbers are based on a sample survey which interviews occupants of selected dwellings covering around 0.27% of the total Australian population. These persons are generally interviewed during the two weeks beginning the Monday between the 6th and 12th of each month and the information obtained relates to the week before the interview takes place.
<i>Treatment of partners</i>	The ABS series includes unemployed persons whose spouse is working, irrespective of income, whereas Newstart Allowance and Youth Allowance (other) recipients are subject to an income and assets test for themselves and their spouse.
<i>Pensioners</i>	The ABS series includes persons being paid a pension but looking for work (eg. sole parents in receipt of Parenting Payments looking for work).

<i>Non job seekers</i>	The overall Newstart Allowance and Youth Allowance (other) series includes persons who are not required to undertake jobsearch. These persons are separately identified in Tables 2 and 3, and have then been excluded in subsequent tables. These people may be undertaking training, the development of self-employment opportunities, full-time voluntary work or a combination of voluntary and part-time work which excludes them from jobsearch obligations. They may also be incapacitated or have another temporary exemption from jobsearch.
<i>Waiting periods</i>	The ABS series includes persons who are serving a waiting period before being granted Newstart Allowance or Youth Allowance (other), or whose allowance was deferred.
<i>Survey</i>	The ABS figures are derived from a Labour Force Survey which is a sample survey, whereas the DEEWR statistics are a complete count of those both eligible for and entitled to receive Newstart Allowance and Youth Allowance (other).

FOR MORE INFORMATION

Labour market information

Other statistics on recipients of labour market related payments are available on request.

In addition to Newstart and Youth Allowances, statistics are also available on Partner Allowance, Mature Age Allowance and Widow Allowance.

For publication distribution enquiries email:
MI.WORKINGAGE.PAYMENTS@centrelink.gov.au

Written correspondence concerning this publication or statistics on labour market related payments should be addressed to:

Director
Income Support Information Section
Working Age Payment Programs Branch
Income Support and Stakeholder Group
Department of Education, Employment and Workplace Relations
PO Box 9879
Canberra Mail Centre ACT 2601

or forwarded via facsimile to (02) 6275 3328.

Other recipient information

Statistics relating to other recipients are also available, including recipient numbers and characteristics for the various FaHCSIA pensions, benefits and family payments.

Other statistical outputs

The following statistical outputs are available on request:

Department of Families, Housing, Community Services and Indigenous Affairs (FaHCSIA)
Income Support Customers: a Statistical Overview
1996, 1997, 1998, 1999, 2000, 2001, 2002, 2003 and 2004.