



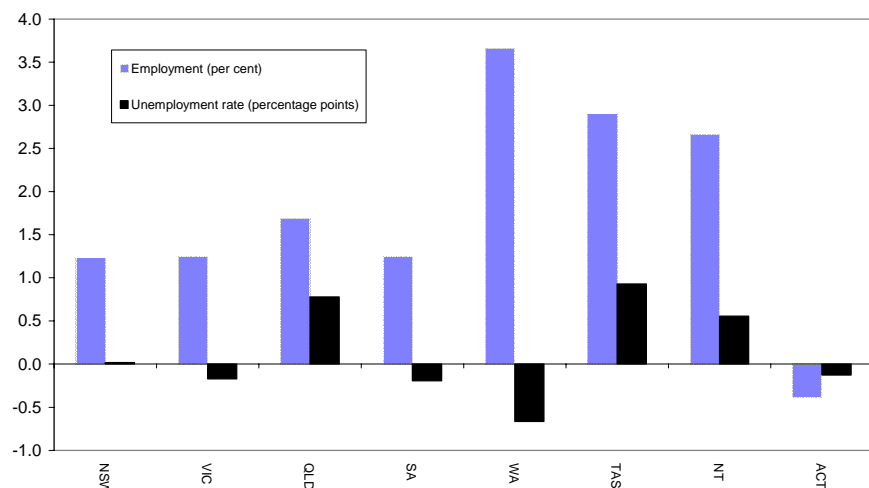
AUSTRALIAN REGIONAL LABOUR MARKETS MARCH QUARTER 2006

MAIN FINDINGS

State/Territory labour market developments

Over the year to the March quarter 2006, employment rose in all States and Territories except the ACT. The largest increase (in percentage terms) was recorded in Western Australia (up by 3.7 per cent), followed by Tasmania (up by 2.9 per cent) and the Northern Territory (up by 2.7 per cent). The unemployment rate fell in half of the States and Territories. The largest falls over the year were recorded in the Western Australia (down by 0.7 percentage points), South Australia and Victoria (both down by 0.2 percentage points).

CHANGE IN EMPLOYMENT AND THE UNEMPLOYMENT RATE, MARCH QUARTER 2005 TO MARCH QUARTER 2006



Developments at the ABS Labour Market Region Level

Employment increased in approximately 72 per cent of regions over the year to the March quarter 2006 while 47 per cent of regions recorded a reduction in their unemployment rate. A number of regions have recorded strong employment growth as well as a significant reduction in their unemployment rate over the last 12 months. In particular:

- Canterbury-Bankstown recorded a 12.3 per cent increase in employment while the unemployment rate fell by 2.0 percentage points to 5.3 per cent;
- Inner Melbourne recorded an 11.4 per cent increase in employment while the unemployment rate fell by 1.6 percentage points to 3.9 per cent; and
- employment in Northern and Western South Australia rose by 9.6 per cent while the unemployment rate fell by 2.4 percentage points to 4.4 per cent.

LABOUR FORCE STATUS BY ABS LABOUR FORCE REGIONS
MARCH QUARTER 2006
Not Seasonally Adjusted

State/Region	Employed		Unemployed		Unemployment rate		Employment rate (a)		Participation rate	
	'000	Annual change	'000	Annual change	%	Annual change (% pts)	%	Annual change (% pts)	%	Annual change (% pts)
AUSTRALIA	10021.8	157.8	599.7	15.8	5.6	0.1	71.4	0.4	64.5	0.2
<i>Metropolitan Australia (b)</i>	6337.2	84.6	353.5	-0.2	5.3	-0.1	72.3	0.2	65.4	0.0
<i>Non-metropolitan Australia (b)</i>	3684.6	73.3	246.2	16.0	6.3	0.3	70.0	0.6	62.9	0.6
New South Wales	3243.4	39.4	200.8	3.1	5.8	0.0	70.0	0.4	62.8	0.2
<i>Sydney</i>	2136.7	21.4	113.3	-0.1	5.0	-0.1	71.7	0.2	64.9	0.0
Inner Sydney and Inner Western Sydney	271.6	7.0	8.6	-1.5	3.1	-0.6	74.5	1.1	68.1	0.5
Inner Sydney	189.6	16.3	5.3	-2.5	2.7	-1.6	76.6	3.2	72.3	4.1
Eastern Suburbs	130.0	-8.8	5.0	0.2	3.7	0.3	74.8	-1.0	63.3	-4.4
St George-Sutherland	225.5	-22.5	9.1	-2.9	3.9	-0.8	74.6	-2.9	63.8	-7.4
Canterbury-Bankstown	143.9	15.7	8.0	-2.0	5.3	-2.0	67.5	5.5	59.4	4.9
Fairfield-Liverpool/ Outer South Western Sydney	265.1	-20.9	22.1	1.8	7.7	1.1	63.9	-5.4	61.8	-4.8
Fairfield-Liverpool	146.6	-17.9	12.7	0.6	8.0	1.1	59.6	-7.7	56.7	-7.0
Central Western Sydney	136.0	6.2	10.8	2.4	7.3	1.2	63.5	2.1	59.2	2.9
North Western Sydney	290.3	5.7	14.8	-4.7	4.9	-1.6	70.5	0.6	65.8	-0.3
Lower Northern Sydney	173.5	6.1	9.6	2.9	5.2	1.4	76.9	0.7	71.1	2.9
Central Northern Sydney	231.0	21.2	8.9	0.1	3.7	-0.3	78.2	5.1	70.5	5.7
Northern Beaches	130.4	3.5	4.1	0.6	3.1	0.4	79.4	-1.1	68.1	1.6
Gosford-Wyong	139.1	8.1	12.4	3.1	8.2	1.5	69.5	2.1	61.6	4.0
<i>Balance of New South Wales</i>	1106.7	18.0	87.5	3.3	7.3	0.1	66.9	0.8	59.3	0.5
Hunter	276.0	8.6	22.7	4.1	7.6	1.1	67.8	1.9	61.0	2.0
Newcastle	237.2	14.8	16.9	0.7	6.7	-0.2	69.2	3.8	62.0	3.2
Illawarra and South Eastern	256.2	-10.7	19.6	0.9	7.1	0.5	65.1	-1.9	56.1	-2.4
Illawarra	163.4	-11.9	15.8	0.7	8.8	0.9	63.7	-2.2	54.1	-3.8
Wollongong	118.0	-8.1	12.1	3.2	9.3	2.7	64.2	-4.6	58.0	-2.7
Richmond-Tweed/ Mid-North Coast	198.6	-1.4	19.9	-2.7	9.1	-1.0	61.4	0.0	52.7	-1.5
Northern/ Far West-North Western/ Central West	246.7	19.0	14.5	-1.1	5.6	-0.9	71.6	3.5	64.4	3.8
Murray-Murrumbidgee	129.3	2.4	10.7	2.1	7.7	1.3	70.1	0.2	65.3	1.4
Victoria	2491.3	30.8	149.8	-2.9	5.7	-0.2	71.5	0.2	64.4	-0.1
<i>Melbourne</i>	1846.5	18.4	104.1	-1.1	5.3	-0.1	72.1	-0.1	65.3	-0.2
Outer Western Melbourne	290.5	-2.7	20.1	0.8	6.5	0.3	69.4	-1.1	65.0	-1.3
North Western Melbourne	130.1	1.9	11.5	-1.3	8.1	-1.0	65.9	-0.2	61.7	-0.5
Inner Melbourne	168.7	17.2	6.9	-2.0	3.9	-1.6	80.9	7.8	74.8	5.6
North Eastern Melbourne	223.9	6.6	12.5	-3.4	5.3	-1.5	70.9	0.8	65.1	0.1
Inner Eastern Melbourne	302.2	-12.1	18.7	4.4	5.8	1.5	72.0	-2.7	62.7	-2.3
Southern Melbourne	209.2	10.1	9.9	1.9	4.5	0.6	75.9	1.2	64.3	2.8
Outer Eastern Melbourne	213.5	-3.5	7.4	-1.4	3.4	-0.5	76.6	-0.5	67.8	-2.4
South Eastern Melbourne	178.0	-5.5	10.8	1.6	5.7	0.9	68.0	-3.0	63.9	-2.1
Mornington Peninsula	130.5	6.4	6.4	-1.6	4.7	-1.4	70.7	0.9	65.5	1.3
<i>Balance of Victoria</i>	644.7	12.4	45.7	-1.8	6.6	-0.4	69.9	1.1	61.9	0.1
Barwon-Western District	172.0	4.5	12.7	-0.6	6.9	-0.5	69.5	-0.6	61.6	0.5
Central Highlands-Wimmera	90.0	-4.6	9.5	3.1	9.6	3.2	66.8	-3.5	61.6	-1.7
Loddon-Mallee	120.3	4.9	9.9	-0.2	7.6	-0.4	68.3	2.2	60.6	1.5
Goulburn-Ovens-Murray	147.3	4.9	8.0	0.2	5.1	-0.1	73.0	2.5	65.4	1.2
All Gippsland	115.1	2.7	5.6	-4.3	4.6	-3.5	70.8	4.3	59.9	-1.7

(a) The employment rate measures total employment as a proportion of persons aged 15 - 64 years.

(b) The ABS defines metropolitan as those regions located within the State capital cities. Non-metropolitan is defined as those regions located outside the State capital cities as well as the two Territories.

LABOUR FORCE STATUS BY ABS LABOUR FORCE REGIONS
MARCH QUARTER 2006
Not Seasonally Adjusted

State/Region	Employed		Unemployed		Unemployment rate		Employment Rate (a)		Participation rate	
	'000	Annual change	'000	Annual change	%	Annual change (% pts)	%	Annual change (% pts)	%	Annual change (% pts)
Queensland	1987.3	33.1	123.1	19.0	5.8	0.8	72.3	-0.3	66.1	0.2
Gold Coast	236.9	6.0	11.1	1.4	4.5	0.4	73.4	0.0	63.9	0.6
<i>Brisbane</i>	<i>937.6</i>	<i>17.7</i>	<i>55.2</i>	<i>4.5</i>	<i>5.6</i>	<i>0.3</i>	<i>73.6</i>	<i>-0.1</i>	<i>68.0</i>	<i>0.1</i>
Brisbane City Inner Ring	240.0	-1.8	13.7	-0.6	5.4	-0.2	75.4	-2.4	70.7	-2.5
Brisbane City Outer Ring	290.2	5.7	15.9	1.9	5.2	0.5	72.7	-0.9	66.5	0.4
South and East Brisbane Balance	192.9	1.8	12.8	2.2	6.2	1.0	71.5	-0.7	67.4	-0.1
North and West Brisbane Balance	214.5	12.0	12.8	0.9	5.6	0.1	74.8	4.0	67.5	2.5
<i>Balance of Queensland</i>	<i>1049.6</i>	<i>15.4</i>	<i>68.0</i>	<i>14.6</i>	<i>6.1</i>	<i>1.2</i>	<i>71.1</i>	<i>-0.4</i>	<i>64.6</i>	<i>0.4</i>
South and East Moreton	229.2	7.8	10.6	1.8	4.4	0.6	73.7	0.9	64.6	1.2
North and West Moreton	165.4	-0.2	12.5	4.4	7.0	2.4	69.7	-1.3	62.1	0.2
Wide Bay-Burnett	101.0	0.1	11.0	4.3	9.8	3.6	59.1	-2.5	54.0	1.0
Darling Downs-South West	121.3	-2.7	6.0	1.4	4.7	1.1	71.9	-0.9	62.6	-2.1
Mackay-Fitzroy-Central West	189.8	9.1	7.8	-2.1	3.9	-1.2	74.7	2.6	70.0	1.0
Northern-North West	129.3	5.0	10.1	2.4	7.3	1.4	76.0	0.2	73.9	2.6
Far North	113.7	-3.8	10.0	2.3	8.1	2.0	68.8	-4.1	65.2	-2.2
South Australia	741.6	9.1	44.3	-1.1	5.6	-0.2	71.0	0.5	62.2	0.1
<i>Adelaide</i>	<i>544.7</i>	<i>6.0</i>	<i>35.4</i>	<i>-1.6</i>	<i>6.1</i>	<i>-0.3</i>	<i>70.9</i>	<i>0.6</i>	<i>62.0</i>	<i>0.0</i>
Northern Adelaide	170.1	3.3	12.3	1.4	6.8	0.6	68.7	-0.2	64.0	1.1
Western Adelaide	95.0	0.2	6.6	-0.9	6.5	-0.8	68.8	1.0	56.0	-0.8
Eastern Adelaide	121.4	9.4	6.4	0.2	5.0	-0.2	75.8	4.6	66.0	4.6
Southern Adelaide	158.2	-6.9	10.0	-2.3	6.0	-1.0	71.1	-1.6	61.1	-3.9
<i>Balance of South Australia</i>	<i>196.9</i>	<i>3.2</i>	<i>8.9</i>	<i>0.5</i>	<i>4.3</i>	<i>0.2</i>	<i>71.5</i>	<i>0.2</i>	<i>62.6</i>	<i>0.6</i>
Northern and Western SA	76.1	6.6	3.5	-1.6	4.4	-2.4	68.8	3.0	62.1	3.4
Southern and Eastern SA	120.8	-3.5	5.5	2.1	4.3	1.7	73.3	-1.5	62.9	-1.3
Western Australia	1059.0	37.4	50.5	-5.7	4.6	-0.7	74.6	1.5	68.1	0.8
<i>Perth</i>	<i>775.0</i>	<i>16.4</i>	<i>38.8</i>	<i>-3.2</i>	<i>4.8</i>	<i>-0.5</i>	<i>74.1</i>	<i>0.5</i>	<i>67.4</i>	<i>0.0</i>
Central Metropolitan	71.8	2.4	2.8	0.4	3.8	0.4	74.9	0.0	67.8	1.2
East Metropolitan	132.5	2.9	7.8	1.7	5.5	1.1	73.8	0.3	68.4	1.0
North Metropolitan	238.0	6.3	12.8	-0.7	5.1	-0.4	76.7	0.5	69.5	0.5
South West Metropolitan	158.3	4.6	6.4	-2.4	3.9	-1.5	71.7	0.4	65.2	-0.3
South East Metropolitan	174.4	0.4	9.0	-2.2	4.9	-1.1	72.7	0.9	65.8	-1.8
<i>Balance of Western Australia</i>	<i>283.9</i>	<i>21.0</i>	<i>11.7</i>	<i>-2.5</i>	<i>4.0</i>	<i>-1.2</i>	<i>76.2</i>	<i>4.4</i>	<i>69.9</i>	<i>3.2</i>
Lower Western WA	146.1	12.5	6.8	-1.5	4.5	-1.4	75.0	3.3	67.3	3.7
Remainder-Balance WA	137.9	8.5	4.9	-1.0	3.4	-0.9	77.6	5.6	73.0	2.6
Tasmania	223.7	6.3	16.6	2.8	6.9	0.9	68.2	1.1	61.4	1.9
Greater Hobart-Southern	112.1	5.9	8.2	1.0	6.8	0.5	69.1	3.2	62.1	3.1
<i>Greater Hobart</i>	<i>96.6</i>	<i>4.6</i>	<i>6.6</i>	<i>1.3</i>	<i>6.4</i>	<i>0.9</i>	<i>69.7</i>	<i>2.5</i>	<i>62.3</i>	<i>3.1</i>
Northern	61.7	-0.9	3.8	0.2	5.8	0.4	67.2	-1.0	59.3	-1.1
Mersey-Lyell	49.9	1.3	4.6	1.6	8.5	2.6	67.3	-1.0	62.4	2.8
Northern Territory	95.6	2.5	7.6	0.8	7.4	0.6	67.1	-0.3	69.1	0.5
Australian Capital Territory	180.0	-0.7	6.8	-0.3	3.7	-0.1	77.8	-0.7	71.8	-1.1

EXPLANATORY NOTES

Introduction

The regional labour market estimates presented in this brochure are three-month averages derived from the Australian Bureau of Statistics (ABS) Monthly Labour Force Survey. These estimates are not adjusted to take account of seasonal and other variations and can exhibit irregular movements. They should therefore be used with caution.

Related information

Users may wish to refer to the DEWR *Small Area Labour Markets, Australia* publication, which is available at <http://www.workplace.gov.au> or free of charge upon request. This publication contains quarterly estimates of unemployment rates and levels for approximately 1,350 Statistical Local Areas.

Next issue

The next issue of *Australian Regional Labour Markets*, for the June quarter 2006, is expected to be released in late July 2006.

Contact details

This brochure was prepared by the Economic and Labour Market Analysis Branch, Department of Employment and Workplace Relations, Canberra. For further information on this brochure or related statistics, contact Sarah Hickson in the Labour Market Analysis Section on (02) 6121 6706 or email sarah.hickson@dewr.gov.au.

More detailed monthly national, State and regional labour force statistics are available from the ABS. For further information on ABS labour force statistics, contact Kate McNally on (02) 6252 6565.
