

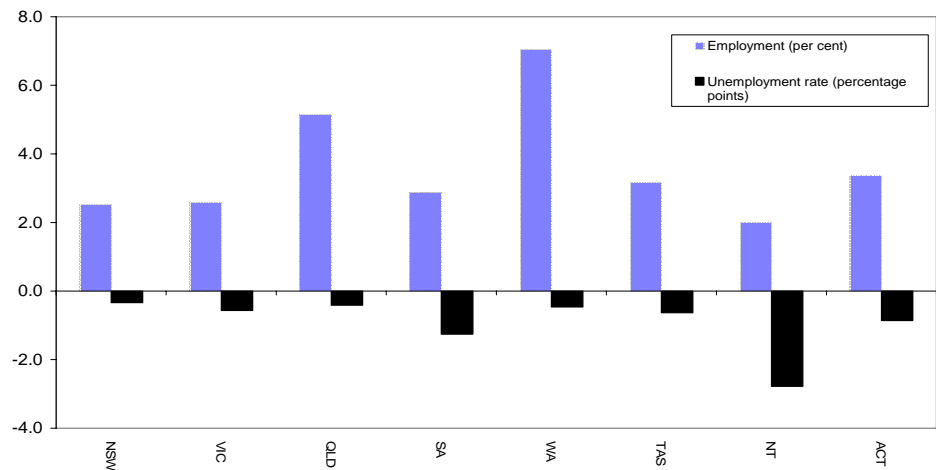


### MAIN FINDINGS

#### State/Territory labour market developments

Over the year to the September quarter 2005, employment rose in all States and Territories. The largest increase (in percentage terms) was recorded in Western Australia (up by 7.0 per cent), followed by Queensland (up by 5.2 per cent) and the Australian Capital Territory (up by 3.4 per cent). Over the same period, the unemployment rate fell in all States and Territories.

#### CHANGE IN EMPLOYMENT AND THE UNEMPLOYMENT RATE, SEPTEMBER QUARTER 2004 TO SEPTEMBER QUARTER 2005



#### Developments at the ABS Labour Market Region Level

Employment increased in almost 87 per cent of regions over the year to the September quarter 2005 while around 63 per cent of regions recorded a reduction in their unemployment rate. A number of regions have recorded strong employment growth as well as a significant reduction in their unemployment rate over the last 12 months. In particular:

- employment in South and East Moreton in Queensland rose by 10.7 per cent while the unemployment rate fell by 1.7 percentage points to 3.5 per cent;
- Mersey-Lyell in Tasmania recorded a 10.5 per cent increase in employment while the unemployment rate fell by 0.8 percentage points to 7.3 per cent; and
- Central Perth recorded a 10.2 per cent increase in employment while the unemployment rate fell by 0.4 percentage points to 2.5 per cent.

**LABOUR FORCE STATUS BY ABS LABOUR FORCE REGIONS**  
**SEPTEMBER QUARTER 2005**  
**Not Seasonally Adjusted**

State/Region	Employed		Unemployed		Unemployment rate		Employment rate (a)		Participation rate	
	'000	Annual change	'000	Annual change	%	Annual change (% pts)	%	Annual change (% pts)	%	Annual change (% pts)
<b>AUSTRALIA</b>	<b>10028.7</b>	<b>345.0</b>	<b>511.7</b>	<b>-39.8</b>	<b>4.9</b>	<b>-0.5</b>	<b>71.8</b>	<b>1.5</b>	<b>64.4</b>	<b>1.1</b>
<i>Metropolitan Australia (b)</i>	6347.5	205.3	301.2	-20.2	4.5	-0.4	72.7	1.5	65.5	1.0
<i>Non-metropolitan Australia (b)</i>	3681.2	139.7	210.5	-19.6	5.4	-0.7	70.3	1.6	62.8	1.1
<b>New South Wales</b>	<b>3267.0</b>	<b>80.2</b>	<b>164.9</b>	<b>-7.9</b>	<b>4.8</b>	<b>-0.3</b>	<b>70.6</b>	<b>1.2</b>	<b>62.9</b>	<b>0.8</b>
<i>Sydney</i>	2163.7	63.0	93.3	-3.0	4.1	-0.3	72.7	1.6	65.4	1.2
Inner Sydney and Inner Western Sydney	267.2	5.4	11.8	0.6	4.2	0.1	72.4	-1.6	68.0	0.7
Inner Sydney	181.6	7.3	8.6	0.3	4.5	0.0	73.1	-0.8	70.8	1.8
Eastern Suburbs	136.1	8.7	4.4	-0.5	3.1	-0.6	76.1	3.7	66.1	3.5
St George-Sutherland	237.8	5.1	8.3	-0.2	3.4	-0.2	76.4	1.6	67.3	0.9
Canterbury-Bankstown	134.6	6.2	5.8	-3.5	4.1	-2.7	65.2	3.4	55.2	0.6
Fairfield-Liverpool/ Outer South Western Sydney	286.8	7.1	17.9	1.0	5.9	0.2	69.3	1.3	65.8	1.1
Fairfield-Liverpool	166.4	4.7	11.0	1.5	6.2	0.6	66.3	0.4	63.5	1.4
Central Western Sydney	141.8	8.6	6.0	0.2	4.1	-0.1	68.1	5.0	59.9	3.1
North Western Sydney	294.7	11.0	16.3	2.0	5.3	0.5	71.5	2.8	67.4	2.3
Lower Northern Sydney	173.2	8.6	3.6	-1.6	2.0	-1.0	77.1	1.5	68.9	2.2
Central Northern Sydney	223.1	0.1	8.5	3.0	3.7	1.2	75.9	-0.9	68.4	0.4
Northern Beaches	138.7	2.9	3.9	0.3	2.7	0.2	81.9	-0.5	72.5	1.1
Gosford-Wyong	129.7	-0.6	6.8	-4.4	5.0	-2.9	68.8	2.9	55.8	-2.6
<i>Balance of New South Wales</i>	1103.3	17.2	71.7	-4.9	6.1	-0.5	66.8	0.3	58.6	0.1
Hunter	276.9	2.2	15.4	-3.0	5.3	-1.0	68.6	2.6	60.0	-0.7
Newcastle	234.0	7.4	12.8	-2.9	5.2	-1.3	69.0	4.0	60.5	0.6
Illawarra and South Eastern	264.2	1.2	17.4	-0.9	6.2	-0.3	66.5	1.2	57.6	-0.3
Illawarra	174.0	3.5	13.7	1.1	7.3	0.4	65.6	2.0	56.9	1.0
Wollongong	121.4	2.0	9.1	1.3	7.0	0.8	66.9	2.7	58.5	1.0
Richmond-Tweed/ Mid-North Coast	193.0	9.1	18.5	0.8	8.7	0.0	58.4	-2.1	51.3	1.9
Northern/ Far West-North Western/ Central West	239.8	10.0	12.3	-3.4	4.9	-1.5	71.2	2.8	62.5	1.1
Murray-Murrumbidgee	129.5	-5.4	8.1	1.6	5.9	1.3	70.7	-6.2	64.5	-2.5
<b>Victoria</b>	<b>2472.5</b>	<b>62.4</b>	<b>139.3</b>	<b>-11.8</b>	<b>5.3</b>	<b>-0.6</b>	<b>71.3</b>	<b>1.1</b>	<b>64.1</b>	<b>0.5</b>
<i>Melbourne</i>	1836.5	40.9	95.5	-8.3	4.9	-0.5	72.1	0.8	65.1	0.3
Outer Western Melbourne	292.1	9.3	18.8	-5.6	6.1	-1.9	69.9	2.5	65.5	0.0
North Western Melbourne	123.2	-3.4	9.8	0.8	7.3	0.7	64.4	-1.5	58.3	-1.9
Inner Melbourne	161.2	13.1	6.3	-5.4	3.7	-3.6	77.1	6.0	71.7	2.5
North Eastern Melbourne	222.7	9.5	11.1	-0.9	4.8	-0.6	70.9	1.0	64.8	1.6
Inner Eastern Melbourne	302.2	1.2	15.2	2.6	4.8	0.8	72.5	-0.4	62.4	0.0
Southern Melbourne	211.6	3.1	7.1	-3.7	3.3	-1.7	76.9	2.0	64.6	-1.0
Outer Eastern Melbourne	213.0	0.7	10.7	2.1	4.8	0.9	74.8	-1.1	69.1	0.0
South Eastern Melbourne	177.2	-4.4	7.8	0.0	4.2	0.1	68.7	-2.4	63.0	-2.3
Mornington Peninsula	133.4	11.7	8.7	1.8	6.2	0.8	73.7	1.1	68.6	5.6
<i>Balance of Victoria</i>	636.0	21.5	43.8	-3.4	6.4	-0.7	69.3	1.8	61.4	0.8
Barwon-Western District	169.5	11.4	11.1	-2.5	6.1	-1.8	70.2	3.3	60.6	2.3
Central Highlands-Wimmera (c)	100.2	21.7	5.9	-3.3	5.6	-4.9	75.1	16.1	66.1	10.8
Loddon-Mallee	120.1	3.6	7.6	-2.8	6.0	-2.3	67.7	1.6	59.8	-0.4
Goulburn-Ovens-Murray	137.7	-10.3	8.6	3.5	5.9	2.5	69.4	-5.4	62.0	-3.8
All Gippsland	108.5	-4.9	10.6	1.7	8.9	1.6	64.8	-3.1	59.6	-2.4

(a) The employment rate measures total employment as a proportion of persons aged 15 - 64 years.

(b) The ABS defines metropolitan as those regions located within the State capital cities. Non-metropolitan is defined as those regions located outside the State capital cities as well as the two Territories.

(c) It should be noted that while the ABS estimates suggest that employment growth in Central Highlands-Wimmera has increased strongly in recent months, and has declined significantly in Goulburn-Ovens-Murray, this appears to be the result of statistical variability rather than any actual change in underlying labour market conditions in these regions.

**LABOUR FORCE STATUS BY ABS LABOUR FORCE REGIONS**  
**SEPTEMBER QUARTER 2005**  
**Not Seasonally Adjusted**

State/Region	Employed		Unemployed		Unemployment rate		Employment Rate (a)		Participation rate	
	'000	Annual change	'000	Annual change	%	Annual change (% pts)	%	Annual change (% pts)	%	Annual change (% pts)
<b>Queensland</b>	<b>2003.4</b>	<b>98.3</b>	<b>99.9</b>	<b>-3.7</b>	<b>4.7</b>	<b>-0.4</b>	<b>73.4</b>	<b>1.9</b>	<b>66.7</b>	<b>1.6</b>
Gold Coast	232.9	16.1	8.6	-3.8	3.6	-1.9	73.5	3.8	63.0	1.9
<i>Brisbane</i>	<i>939.1</i>	<i>38.1</i>	<i>44.1</i>	<i>0.8</i>	<i>4.5</i>	<i>-0.1</i>	<i>74.3</i>	<i>1.3</i>	<i>68.1</i>	<i>1.3</i>
Brisbane City Inner Ring	246.0	2.8	8.4	-2.2	3.3	-0.9	78.0	-0.7	71.7	-1.7
Brisbane City Outer Ring	291.9	18.2	14.4	1.5	4.7	0.2	73.7	2.3	67.3	3.2
South and East Brisbane Balance	188.3	-0.8	9.5	0.3	4.8	0.2	72.0	0.0	65.6	-1.6
North and West Brisbane Balance	212.9	17.9	11.8	1.2	5.3	0.1	73.2	3.1	67.5	4.4
<i>Balance of Queensland</i>	<i>1064.3</i>	<i>60.2</i>	<i>55.7</i>	<i>-4.6</i>	<i>5.0</i>	<i>-0.7</i>	<i>72.7</i>	<i>2.4</i>	<i>65.5</i>	<i>1.9</i>
South and East Moreton	227.7	22.1	8.3	-3.0	3.5	-1.7	74.2	5.1	64.3	3.9
North and West Moreton	168.0	4.3	9.4	0.4	5.3	0.1	71.5	0.9	62.7	0.3
Wide Bay-Burnett	107.7	11.7	8.4	-3.0	7.3	-3.4	64.2	4.9	56.7	3.1
Darling Downs-South West	128.3	10.7	5.3	-0.4	4.0	-0.6	75.3	5.5	66.5	3.8
Mackay-Fitzroy-Central West	184.4	3.9	9.9	-0.7	5.1	-0.4	73.5	-0.4	69.6	-0.3
Northern-North West	130.4	10.2	6.5	-0.5	4.7	-0.7	77.0	2.2	73.4	3.9
Far North	117.8	-2.7	7.9	2.5	6.3	2.0	71.3	-2.2	67.1	-1.6
<b>South Australia</b>	<b>741.5</b>	<b>20.8</b>	<b>36.4</b>	<b>-9.1</b>	<b>4.7</b>	<b>-1.3</b>	<b>71.0</b>	<b>1.6</b>	<b>61.8</b>	<b>0.5</b>
<i>Adelaide</i>	<i>546.4</i>	<i>16.9</i>	<i>30.2</i>	<i>-5.2</i>	<i>5.2</i>	<i>-1.0</i>	<i>71.1</i>	<i>2.0</i>	<i>61.9</i>	<i>0.9</i>
Northern Adelaide	167.5	6.9	12.3	-2.0	6.8	-1.3	68.3	2.1	63.4	1.2
Western Adelaide	94.9	-0.3	4.6	-1.3	4.7	-1.2	70.1	1.3	55.2	-1.2
Eastern Adelaide	117.8	4.2	4.2	0.1	3.5	-0.1	74.5	2.8	63.3	1.9
Southern Adelaide	166.2	6.1	9.0	-1.9	5.2	-1.3	72.4	1.8	64.0	1.2
<i>Balance of South Australia</i>	<i>195.1</i>	<i>3.9</i>	<i>6.2</i>	<i>-3.9</i>	<i>3.1</i>	<i>-1.9</i>	<i>70.7</i>	<i>0.3</i>	<i>61.5</i>	<i>-0.4</i>
Northern and Western SA	72.5	0.8	2.4	-1.9	3.2	-2.5	68.6	1.0	58.8	-1.3
Southern and Eastern SA	122.6	3.1	3.8	-1.9	3.0	-1.6	72.1	-0.2	63.3	0.1
<b>Western Australia</b>	<b>1046.9</b>	<b>68.8</b>	<b>46.7</b>	<b>-1.9</b>	<b>4.3</b>	<b>-0.5</b>	<b>74.3</b>	<b>3.5</b>	<b>67.7</b>	<b>3.1</b>
<i>Perth</i>	<i>768.5</i>	<i>44.2</i>	<i>32.7</i>	<i>-3.8</i>	<i>4.1</i>	<i>-0.7</i>	<i>73.9</i>	<i>2.9</i>	<i>66.9</i>	<i>2.3</i>
Central Metropolitan	75.0	7.0	1.9	-0.1	2.5	-0.4	76.3	2.1	70.5	5.1
East Metropolitan	124.6	1.9	5.6	1.2	4.3	0.9	71.5	1.0	64.0	0.4
North Metropolitan	234.6	15.1	8.3	-3.9	3.4	-1.9	76.6	4.2	67.9	2.2
South West Metropolitan	151.9	4.6	7.1	-0.5	4.5	-0.4	69.9	0.6	63.5	0.6
South East Metropolitan	182.3	15.6	9.8	-0.5	5.1	-0.7	75.1	5.0	69.6	4.5
<i>Balance of Western Australia</i>	<i>278.3</i>	<i>24.6</i>	<i>13.9</i>	<i>1.9</i>	<i>4.8</i>	<i>0.2</i>	<i>75.2</i>	<i>5.2</i>	<i>69.8</i>	<i>5.3</i>
Lower Western WA	145.6	21.6	7.8	1.6	5.1	0.3	75.5	8.8	68.1	9.3
Remainder-Balance WA	132.8	3.0	6.1	0.3	4.4	0.1	74.8	1.3	71.7	0.5
<b>Tasmania</b>	<b>219.7</b>	<b>6.7</b>	<b>14.5</b>	<b>-1.1</b>	<b>6.2</b>	<b>-0.6</b>	<b>67.0</b>	<b>1.1</b>	<b>60.0</b>	<b>0.8</b>
Greater Hobart-Southern	106.3	-0.4	7.3	-0.1	6.4	0.0	66.1	0.1	58.8	-0.8
<i>Greater Hobart</i>	<i>93.4</i>	<i>2.2</i>	<i>5.3</i>	<i>-0.7</i>	<i>5.4</i>	<i>-0.8</i>	<i>67.8</i>	<i>1.1</i>	<i>59.8</i>	<i>0.3</i>
Northern	64.0	2.4	3.3	-1.0	4.9	-1.6	69.4	1.7	61.2	0.7
Mersey-Lyell	49.3	4.7	3.9	0.0	7.3	-0.8	65.9	2.6	61.1	4.8
<b>Northern Territory</b>	<b>96.6</b>	<b>1.9</b>	<b>4.5</b>	<b>-2.9</b>	<b>4.4</b>	<b>-2.8</b>	<b>69.1</b>	<b>0.1</b>	<b>68.8</b>	<b>-2.0</b>
<b>Australian Capital Territory</b>	<b>181.3</b>	<b>5.9</b>	<b>5.6</b>	<b>-1.4</b>	<b>3.0</b>	<b>-0.9</b>	<b>78.7</b>	<b>2.2</b>	<b>72.2</b>	<b>1.1</b>

---

## EXPLANATORY NOTES

### Introduction

The regional labour market estimates presented in this brochure are three monthly averages derived from the Australian Bureau of Statistics (ABS) Monthly Labour Force Survey. These estimates are not adjusted to take account of seasonal and other variations and can exhibit irregular movements. They should therefore be used with caution.

### Related information

Users may wish to refer to the DEWR *Small Area Labour Markets, Australia* publication which is available at <http://www.workplace.gov.au> or free of charge upon request. This publication contains quarterly estimates of unemployment rates and levels for approximately 1,350 Statistical Local Areas.

### Next issue

The next issue of *Australian Regional Labour Markets*, for the December quarter 2005, is expected to be released in late January 2006.

### Contact details

This brochure was prepared by the Economic and Labour Market Analysis Branch, Department of Employment and Workplace Relations, Canberra. For further information on this brochure or related statistics, contact Sarah Hickson in the Labour Market Analysis Section on (02) 6121 6706 or email [sarah.hickson@dewr.gov.au](mailto:sarah.hickson@dewr.gov.au).

More detailed monthly national, State and regional labour force statistics are available from the ABS. For further information on ABS labour force statistics, contact Kate McNalley on (02) 6252 6565.