

AUSTRALIAN REGIONAL LABOUR MARKETS

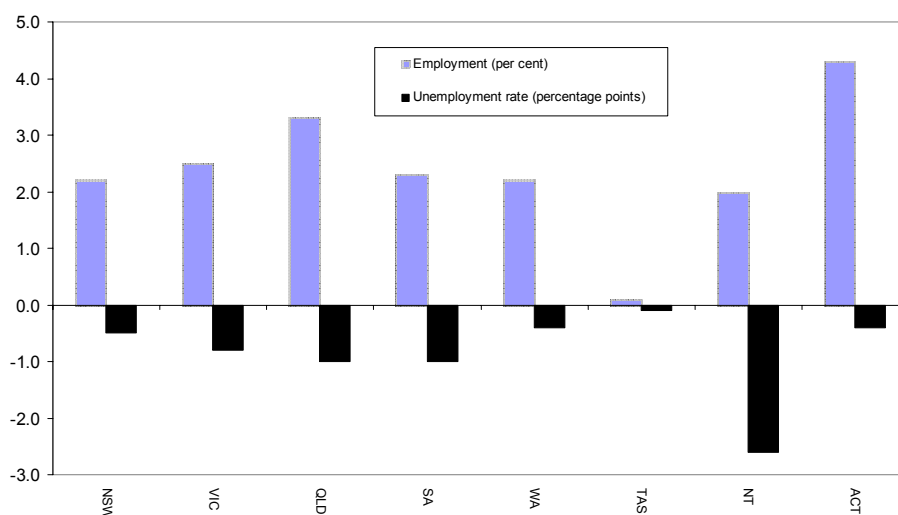
DECEMBER QUARTER 2002

MAIN FINDINGS

State/Territory labour market developments

All States and Territories recorded a rise in employment over the year to the December quarter 2002. The largest increase (in percentage terms) was recorded in the ACT (up by 4.3 per cent), followed by Queensland (up by 3.3 per cent) and Victoria (up by 2.5 per cent). All States and Territories also recorded a reduction in their unemployment rate over the year to the December quarter 2002.

CHANGE IN EMPLOYMENT AND THE UNEMPLOYMENT RATE, DECEMBER QUARTER 2001 TO DECEMBER QUARTER 2002



Developments at the ABS Labour Market Region Level

In all, 74 per cent of regions recorded an increase in employment over the year to the December quarter 2002 while 73 per cent of regions recorded a reduction in their unemployment rate. A number of regions have recorded strong employment growth as well as a significant reduction in their unemployment rate over the last 12 months. In particular:

- Outer Brisbane recorded a 13.7 per cent increase in employment while the unemployment rate fell by 2.1 percentage points to 5.1 per cent;
- Central Highlands-Wimmera in Victoria recorded a 5.8 per cent increase in employment while the unemployment rate fell by 2.8 percentage points to 5.3 per cent; and
- Remainder-Balance of Western Australia recorded an 8.8 per cent increase in employment while the unemployment rate fell by 1.6 percentage points to 4.5 per cent.

**LABOUR FORCE STATUS BY ABS LABOUR FORCE REGIONS
DECEMBER QUARTER 2002
Not Seasonally Adjusted**

State/Region	Employed		Unemployed		Unemployment rate		Participation rate	
	'000	Annual change	'000	Annual change	%	Annual change % pts	%	Annual change % pts
AUSTRALIA	9467.6	231.2	590.2	-60.1	5.9	-0.7	64.0	0.2
<i>Metropolitan Australia*</i>	<i>6056.6</i>	<i>180.3</i>	<i>351.6</i>	<i>-42.5</i>	<i>5.5</i>	<i>-0.8</i>	<i>64.8</i>	<i>0.2</i>
<i>Non-metropolitan Australia*</i>	<i>3411.0</i>	<i>50.8</i>	<i>238.6</i>	<i>-17.7</i>	<i>6.5</i>	<i>-0.5</i>	<i>62.5</i>	<i>0.0</i>
New South Wales	3138.3	68.7	188.8	-12.4	5.7	-0.5	62.9	0.3
<i>Sydney</i>	<i>2100.3</i>	<i>46.9</i>	<i>108.4</i>	<i>-5.6</i>	<i>4.9</i>	<i>-0.4</i>	<i>65.1</i>	<i>0.1</i>
Inner Sydney and Inner Western Sydney	252.4	-7.7	8.9	-3.0	3.4	-1.0	68.2	-0.5
Inner Sydney	163.5	-11.6	6.1	-1.5	3.6	-0.5	69.9	-1.7
Eastern Suburbs	119.5	-6.7	6.6	-0.8	5.2	-0.3	64.8	-4.6
St George-Sutherland	232.6	14.5	9.0	-0.5	3.7	-0.5	66.7	0.6
Canterbury-Bankstown	136.6	8.7	9.9	0.5	6.8	-0.1	56.0	2.6
Fairfield-Liverpool/ Outer South Western Sydney	282.5	3.1	20.5	-5.0	6.8	-1.6	63.7	-2.1
Fairfield-Liverpool	164.1	3.1	14.8	0.2	8.3	-0.1	59.8	-2.7
Central Western Sydney	124.9	-7.0	7.2	1.2	5.5	1.1	56.6	-2.0
North Western Sydney+	297.4	13.2	14.4	-1.3	4.6	-0.6	68.8	1.6
Lower Northern Sydney	152.3	1.0	7.1	-0.4	4.5	-0.3	67.5	1.3
Central Northern Sydney+	227.6	8.8	7.9	-0.2	3.4	-0.2	68.0	-2.0
Northern Beaches	138.1	2.1	2.7	-0.7	1.9	-0.5	72.5	3.8
Gosford-Wyong	136.3	16.8	14.1	4.5	9.4	1.9	59.7	4.1
<i>Balance of New South Wales</i>	<i>1038.0</i>	<i>21.7</i>	<i>80.4</i>	<i>-6.8</i>	<i>7.2</i>	<i>-0.7</i>	<i>58.9</i>	<i>0.6</i>
Hunter	245.6	7.4	18.9	-6.9	7.1	-2.6	56.3	-2.0
Newcastle	211.3	8.4	17.1	-5.6	7.5	-2.6	58.0	-1.3
Illawarra and South Eastern	274.4	7.2	21.7	3.0	7.3	0.8	60.0	1.5
Illawarra	175.0	-8.5	17.7	4.8	9.2	2.6	58.5	0.8
Wollongong	124.4	-15.6	14.5	5.2	10.4	4.2	60.1	0.3
Richmond-Tweed/ Mid-North Coast	184.3	7.5	17.3	-3.5	8.6	-2.0	56.6	1.5
Northern/ Far West-North Western/ Central West	197.1	-9.2	14.3	-0.3	6.7	0.1	58.8	0.3
Murray-Murrumbidgee	136.6	8.8	8.2	0.9	5.7	0.3	66.3	3.1
Victoria	2391.8	59.0	139.3	-18.5	5.5	-0.8	63.9	0.0
<i>Melbourne</i>	<i>1785.8</i>	<i>55.5</i>	<i>102.4</i>	<i>-17.1</i>	<i>5.4</i>	<i>-1.0</i>	<i>64.7</i>	<i>0.0</i>
Outer Western Melbourne	273.1	12.9	21.3	-5.4	7.2	-2.1	62.2	-0.4
North Western Melbourne	126.8	-0.3	8.2	-5.3	6.1	-3.6	61.3	-3.5
Inner Melbourne	143.9	12.2	9.2	2.9	6.0	1.5	70.3	2.9
North Eastern Melbourne	201.5	5.2	12.4	-2.4	5.8	-1.2	64.2	1.2
Inner Eastern Melbourne	305.0	-11.6	12.0	-4.4	3.8	-1.1	64.1	-0.4
Southern Melbourne	203.2	7.9	7.0	-4.2	3.3	-2.1	63.5	-0.8
Outer Eastern Melbourne	234.1	-1.7	12.7	-0.6	5.2	-0.2	69.2	-3.3
South Eastern Melbourne	189.8	27.7	12.8	1.7	6.3	-0.1	67.1	5.0
Mornington Peninsula	108.2	3.1	6.8	0.5	5.9	0.3	60.8	0.3
<i>Balance of Victoria</i>	<i>606.0</i>	<i>3.5</i>	<i>36.8</i>	<i>-1.4</i>	<i>5.7</i>	<i>-0.2</i>	<i>61.7</i>	<i>0.0</i>
Barwon-Western District	167.1	-7.7	10.3	0.3	5.8	0.4	61.7	-0.9
Central Highlands-Wimmera	91.0	5.0	5.1	-2.4	5.3	-2.8	59.6	1.5
Loddon-Mallee	116.1	-2.7	7.1	-1.2	5.7	-0.7	63.2	-1.5
Goulburn-Ovens-Murray	138.3	2.1	7.6	0.7	5.2	0.4	64.9	1.3
All Gippsland	93.6	6.8	6.7	1.3	6.7	0.8	57.5	0.4

* The ABS defines metropolitan as those regions located within the State capital cities. Non-metropolitan is defined as those regions located outside the State capital cities as well as the two Territories.

+ These regions have recently undergone a name change. North Western Sydney was formerly named Outer Western Sydney and Blacktown while Central Northern Sydney was formerly named Hornsby Ku-ring-gai and Baulkham Hills.

**LABOUR FORCE STATUS BY ABS LABOUR FORCE REGIONS
DECEMBER QUARTER 2002
Not Seasonally Adjusted**

State/Region	Employed		Unemployed		Unemployment rate		Participation rate	
	'000	Annual change	'000	Annual change	%	Annual change % pts	%	Annual change % pts
Queensland	1785.7	56.5	129.2	-15.9	6.7	-1.0	65.2	0.0
Gold Coast	220.3	8.9	12.4	-5.6	5.3	-2.5	64.5	0.2
<i>Brisbane</i>	<i>846.9</i>	<i>43.4</i>	<i>57.9</i>	<i>-11.3</i>	<i>6.4</i>	<i>-1.5</i>	<i>66.7</i>	<i>1.0</i>
Brisbane City Inner Ring	198.0	-1.6	11.7	-3.8	5.6	-1.6	67.6	-0.5
Brisbane City Outer Ring	275.0	33.1	14.8	-3.9	5.1	-2.1	66.7	1.8
South and East Brisbane Balance	162.7	2.3	13.9	-3.5	7.9	-1.9	65.4	1.1
North and West Brisbane Balance	211.3	9.6	17.5	-0.1	7.6	-0.4	66.8	1.2
<i>Balance of Queensland</i>	<i>938.8</i>	<i>13.2</i>	<i>71.3</i>	<i>-4.6</i>	<i>7.1</i>	<i>-0.5</i>	<i>63.8</i>	<i>-0.8</i>
South and East Moreton	207.5	2.8	12.2	-4.1	5.6	-1.8	63.9	-0.3
North and West Moreton	152.2	0.5	12.9	-4.3	7.8	-2.3	60.4	-1.2
Wide Bay-Burnett	89.2	4.9	16.2	5.2	15.3	3.8	55.5	0.0
Darling Downs-South West	116.7	1.7	6.1	1.5	5.0	1.2	63.3	-1.9
Mackay-Fitzroy-Central West#	161.5	..	9.5	..	5.5	..	69.5	..
Northern-North West#	107.9	..	8.4	..	7.2	..	69.7	..
Far North	103.7	-6.5	6.0	-1.2	5.5	-0.7	65.3	-4.5
South Australia	702.3	16.1	43.5	-7.2	5.8	-1.0	60.9	0.2
<i>Adelaide</i>	<i>522.3</i>	<i>17.0</i>	<i>32.6</i>	<i>-4.2</i>	<i>5.9</i>	<i>-0.9</i>	<i>60.9</i>	<i>0.8</i>
Northern Adelaide	164.1	10.4	12.6	-0.8	7.1	-0.9	62.5	2.1
Western Adelaide	95.4	3.3	6.2	-0.5	6.1	-0.7	57.4	1.7
Eastern Adelaide	111.3	2.5	5.6	-1.3	4.8	-1.1	61.8	-1.2
Southern Adelaide	151.5	0.8	8.1	-1.6	5.1	-1.0	61.1	0.1
<i>Balance of South Australia</i>	<i>180.0</i>	<i>-0.9</i>	<i>10.9</i>	<i>-3.0</i>	<i>5.7</i>	<i>-1.4</i>	<i>60.8</i>	<i>-1.3</i>
Northern and Western SA	66.1	2.9	5.4	-0.9	7.6	-1.6	57.6	0.1
Southern and Eastern SA	114.0	-3.9	5.5	-2.0	4.6	-1.4	62.9	-2.1
Western Australia	972.8	21.4	59.0	-2.7	5.7	-0.4	66.7	0.1
<i>Perth</i>	<i>716.0</i>	<i>15.0</i>	<i>43.4</i>	<i>-3.3</i>	<i>5.7</i>	<i>-0.5</i>	<i>66.0</i>	<i>-0.1</i>
Central Metropolitan	59.8	0.3	3.4	0.8	5.4	1.3	64.4	2.6
East Metropolitan	109.7	-1.8	6.1	-2.3	5.3	-1.7	65.5	0.6
North Metropolitan	228.8	2.8	13.8	0.9	5.7	0.3	67.9	-2.4
South West Metropolitan	148.8	5.3	8.9	-2.6	5.6	-1.8	63.7	0.1
South East Metropolitan	168.9	8.4	11.2	-0.1	6.2	-0.4	66.3	0.9
<i>Balance of Western Australia</i>	<i>256.8</i>	<i>6.4</i>	<i>15.6</i>	<i>0.6</i>	<i>5.7</i>	<i>0.1</i>	<i>69.0</i>	<i>0.7</i>
Lower Western WA	124.2	-4.3	9.3	2.2	7.0	1.7	64.8	0.0
Remainder-Balance WA	132.6	10.7	6.3	-1.6	4.5	-1.6	73.6	1.2
Tasmania	201.2	0.3	18.4	-0.3	8.4	-0.1	58.6	-0.3
Greater Hobart-Southern	97.4	1.3	7.9	-1.2	7.5	-1.1	59.1	0.6
<i>Greater Hobart</i>	<i>85.4</i>	<i>2.5</i>	<i>6.8</i>	<i>-1.0</i>	<i>7.4</i>	<i>-1.2</i>	<i>58.9</i>	<i>0.6</i>
Northern	59.3	-1.5	5.4	0.6	8.4	1.1	58.8	-1.3
Mersey-Lyell	44.5	0.5	5.1	0.3	10.3	0.4	57.2	-0.8
Northern Territory	99.9	1.9	5.4	-2.8	5.2	-2.6	74.1	-0.4
Australian Capital Territory	175.6	7.3	6.5	-0.5	3.6	-0.4	73.2	1.8

Changes to ABS Labour Force Region boundaries have impacted on the data presented here to the extent that a series break exists for these regions.

EXPLANATORY NOTES

Introduction

The regional labour market estimates presented in this brochure are three monthly averages derived from the Australian Bureau of Statistics (ABS) Monthly Labour Force Survey. These estimates are not adjusted to take account of seasonal and other variations and can exhibit irregular movements. They should therefore be used with caution.

Changes this issue

In November 2002, the boundaries for two regions in Queensland (Mackay-Fitzroy-Central West and Northern-North West) were changed by the ABS in order to maintain consistency with the Australian Standard Geographical Classification and in response to user requirements. These changes have resulted in a series break for these regions. For this reason, annual change estimates have not been presented for these regions. At the same time, the ABS also introduced a name change for two of the regions in Sydney. The North Western Sydney region was formerly named Outer Western Sydney and Blacktown while Central Northern Sydney was formerly named Hornsby Ku-ring-gai and Baulkham Hills. These name changes have had no impact on the data.

Related information

Users may wish to refer to the DEWR *Small Area Labour Markets, Australia* publication which is available at <http://www.workplace.gov.au> or free of charge upon request. This publication contains quarterly estimates of unemployment rates and numbers for approximately 1,300 Statistical Local Areas.

Next issue

The next issue of *Australian Regional Labour Markets*, for the March quarter 2003, is expected to be distributed in late April 2003.

Contact details

This brochure was prepared by the Economic and Labour Market Analysis Branch, Department of Employment and Workplace Relations, Canberra. For further information on this brochure or related statistics, contact Mark Roddam in the Labour Market Analysis Section on (02) 6121 7506.

More detailed monthly National, State and regional labour force statistics are available from the ABS. For further information on ABS labour force statistics, contact Peter Bradbury on (02) 6252 6565.
