

LABOUR MARKET AND RELATED PAYMENTS

a monthly profile

Note: The Australian Bureau of Statistics (ABS) produces the official unemployment statistics. The figures contained in this publication are different from the ABS unemployment figures as the ABS and the Department of Education, Employment and Workplace Relations (DEEWR) use different definitions to identify the unemployed and different methods of counting (see the Appendix for more information).

This publication can be found at <http://www.workplace.gov.au/lmrp>

March 2008

Embargoed

Until 11.30 am, 23 April 2008

Annual Subscription - \$65.00

CONTENTS

	<i>Page</i>
Introduction	1
Statistical Highlights	2
Tables	
1. Labour Market Payments - Time Series	3
2. Newstart Allowees - Derivation of the job seeker population	4
3. Youth Allowees (other) - Derivation of the job seeker population	5
4. Job seekers receiving Newstart Allowance and Youth Allowance (other) - Time Series	6
5. Job seekers receiving Newstart Allowance and Youth Allowance (other) by State	7
6. Job seekers receiving Newstart Allowance and Youth Allowance (other) by Age and Sex	8
7. Job seekers receiving Newstart Allowance and Youth Allowance (other) by Area Support Office and Customer Service Centre	9
8. Job seekers receiving Newstart Allowance and Youth Allowance (other) by Fortnightly Earnings and Sex	23
Explanatory Notes	24
Glossary	30
Appendix	33
For More Information	36

INTRODUCTION

This publication presents statistical information on a monthly basis for the various types of labour market payments delivered by Centrelink on behalf of the Department of Education, Employment and Workplace Relations (DEEWR). This publication was produced previously by the Department of Employment and Workplace Relations (DEWR).

This publication covers NSA and YA(o) in some detail, and to a lesser extent, MAA, PA, WA, YA(FTS) and YA (Australian Apprentices).

Table 1 provides information on the total number of NSA and YA recipients. The YA population is broken down into YA(o), YA(FTS) and YA(Australian Apprentices) categories. The total numbers of MAA, PA and WA recipients are also provided in this table.

Tables 2 and 3 show the derivation of the NSA and YA(o) job seeker populations (see the reference to job seekers in the 'Comparability of data' section of the Explanatory Notes). These populations are added together to derive the total number of job seekers.

Tables 4 to 8 provide information on the total job seeker population.

When using time series figures, it is important to note that changes have occurred over time to the conditions of eligibility for different payments. Details of these changes are provided in the Explanatory Notes.

All media inquiries should be directed to the Centrelink National Media Officer on (02) 6284 6442. For more general inquiries regarding further statistical information please refer to the last page of this publication for other contact details.

The next issue of this publication is scheduled for release on 21 May 2008.

STATISTICAL HIGHLIGHTS – March 2008

Between March 2007 and March 2008:

Total Newstart Allowance (NSA) recipients and Youth Allowance (other) (YA(o)) recipients **decreased by 7.4%** overall from 544,897 to 504,675 and

- ◆ decreased 7.3% for NSA from 473,278 to 438,786 and
- ◆ decreased 8.0% for YA(o) from 71,619 to 65,889.

The number of job seekers **decreased by 13.0%** overall from 353,178 to 307,316 and

- ◆ decreased 14.1% for NSA recipients from 297,169 to 255,279 and
- ◆ decreased 7.1% for YA(o) recipients from 56,009 to 52,037.

Long-term job seekers decreased by 15.2% from 195,351 to 165,748.

Short-term job seekers decreased by 10.3% from 157,827 to 141,568.

For comparisons between DEEWR unemployment labour market payment numbers and ABS labour force unemployment statistics, see Appendix.

**Newstart Allowance and Youth Allowance (other)
March 2006 to March 2008**

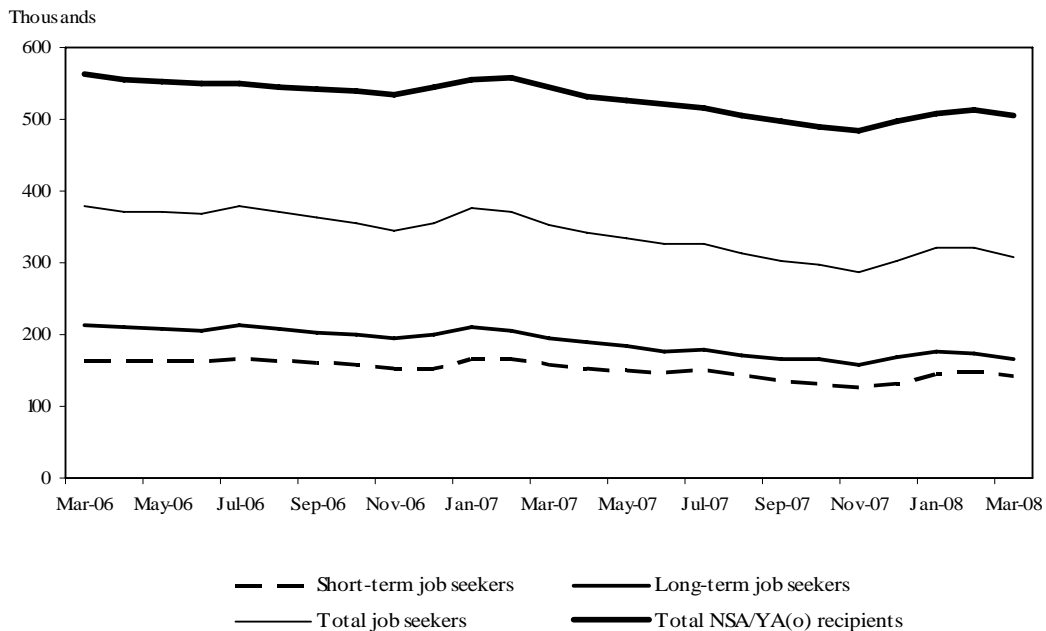


TABLE 1 - LABOUR MARKET PAYMENTS - TIME SERIES (a)

	Newstart Allowance		Youth Allowance			Mature Age Allowance	Partner Allowance	Widow Allowance
	Long-term (b)	Total	Other	Full-time Students (c)	Australian Apprentices (d)			
February 1994 (e)	472,785	977,796
March 2006	291,020	484,784	78,913	250,079	2,994	14,271	64,282	45,622
April 2006	288,017	479,378	76,747	260,349	3,190	13,547	62,924	45,438
May 2006	285,853	475,830	75,533	266,392	3,181	12,836	61,863	45,212
June 2006	284,288	474,125	75,366	270,081	3,323	12,110	60,829	45,096
July 2006	285,152	474,477	76,173	264,863	3,376	11,379	59,401	44,639
August 2006	284,943	472,448	72,634	271,591	3,472	10,731	58,213	44,184
September 2006	285,218	472,222	71,104	276,235	3,643	10,049	56,965	43,705
October 2006	284,276	470,340	69,511	277,061	3,740	9,430	55,683	43,349
November 2006	282,694	466,631	68,721	267,042	3,683	8,892	54,611	43,112
December 2006	284,499	469,233	76,480	226,902	3,571	8,293	53,398	42,903
January 2007	286,614	478,033	77,358	216,869	3,487	7,745	52,205	42,530
February 2007	286,113	481,343	76,036	223,780	3,715	7,287	51,251	42,370
March 2007	281,937	473,278	71,619	239,502	4,087	6,751	50,058	42,032
April 2007	277,688	463,732	68,746	250,660	4,250	6,235	48,912	41,619
May 2007	274,568	458,297	67,973	256,805	4,341	5,790	47,896	41,245
June 2007	271,439	452,733	67,852	261,197	4,435	5,284	46,709	40,886
July 2007	269,816	448,833	67,617	256,808	4,416	4,796	45,917	40,735
August 2007	267,972	442,112	63,717	263,166	4,490	4,381	45,459	40,853
September 2007	266,180	435,711	62,042	265,669	4,509	3,981	45,058	41,019
October 2007	264,434	429,811	59,920	264,829	4,350	3,619	44,695	41,156
November 2007	261,930	424,168	59,967	249,546	4,093	3,242	44,358	41,278
December 2007	264,127	428,962	69,320	215,158	3,956	2,868	43,997	41,400
January 2008	266,199	437,918	69,709	206,509	3,746	2,518	43,434	41,297
February 2008	266,368	443,916	69,728	213,384	3,897	2,149	42,512	41,014
March 2008	263,759	438,786	65,889	227,301	4,094	1,797	41,528	40,729
<i>Variation February 2008 - March 2008</i>								
Number	-2,609	-5,130	-3,839	13,917	197	-352	-984	-285
Per cent	-1.0	-1.2	-5.5	6.5	5.1	-16.4	-2.3	-0.7

(a) This table presents data using the revised method of measuring the number of people receiving labour market payments introduced in July 2002. Revised historical data from May 1998 to June 2002 is in Table A (May 1998 - June 2000) and Table 1 (July 2000 - July 2002) of July 2002 publication.

(b) Long-term Newstart allowees are persons who have been receiving income support for 12 months or more.

(c) The number of full time students does not include those who have traded in their entire Youth Allowance entitlement for a loan under the Student Financial Supplement Loan Scheme. The Government announced on 24 April 2003 that no further loans would be issued under this Scheme from 1 January 2004. For further details, refer to the Explanatory Notes at the back of this publication.

(d) Australian Apprenticeships combine employment with structured training to provide a nationally recognised qualification. Australian Apprentices enter formal agreements known as either 'Training Agreements' or 'Contracts of Training' which set out the relationship between the employer and the Australian Apprentice and their respective rights and responsibilities.

(e) February 1994 data has been included for comparison purposes due to the peak in the number of persons receiving JSA/NSA at this point in time.

Notes:

- Most of the figures in this publication are averages and have been rounded. As a result, discrepancies may occur between sums of component items and totals, and in the calculation of variations.

TABLE 2 - NEWSTART ALLOWEES - DERIVATION OF THE JOB SEEKER POPULATION

	February 2008	March			Variation February - March	
		Males	Females	Persons	Number	Per cent
Short-term NSA Customers	177,548	111,128	63,899	175,027	-2,521	-1.4
CPS recipients (a)	2,579	1,912	681	2,593	14	0.5
Did not receive a payment (b)	9,370	5,893	4,525	10,418	1,048	11.2
Received a payment	165,599	103,323	58,693	162,016	-3,583	-2.2
Incapacitated (c)	15,968	9,290	6,419	15,709	-259	-1.6
Training	10,781	7,667	4,193	11,860	1,079	10.0
Self-employment development (d)	213	116	89	205	-8	-3.8
Voluntary/part-time work (e)	3,976	1,383	2,649	4,032	56	1.4
Other/temporary exemptions (f)	13,393	7,633	5,691	13,324	-69	-0.5
Short-term NSA job seekers (g)	121,268	77,234	39,652	116,886	-4,382	-3.6
Long-term NSA Customers	266,368	155,105	108,654	263,759	-2,609	-1.0
CPS recipients (a)	6,642	4,461	2,173	6,634	-8	-0.1
Did not receive a payment (b)	9,290	5,616	5,038	10,654	1,364	14.7
Received a payment	250,436	145,028	101,443	246,471	-3,965	-1.6
Incapacitated (c)	17,837	9,462	8,016	17,478	-359	-2.0
Training	50,379	31,905	19,943	51,848	1,469	2.9
Self-employment development (d)	91	49	42	91	0	0.0
Voluntary/part-time work (e)	13,013	6,930	6,554	13,484	471	3.6
Other/temporary exemptions (f)	25,680	14,891	10,286	25,177	-503	-2.0
Long-term NSA job seekers (g)	143,436	81,791	56,602	138,393	-5,043	-3.5
All NSA Customers	443,916	266,233	172,553	438,786	-5,130	-1.2
CPS recipients (a)	9,221	6,373	2,854	9,227	6	0.1
Did not receive a payment (b)	18,660	11,509	9,563	21,072	2,412	12.9
Received a payment	416,035	248,351	160,136	408,487	-7,548	-1.8
Incapacitated (c)	33,805	18,752	14,435	33,187	-618	-1.8
Training	61,160	39,572	24,136	63,708	2,548	4.2
Self-employment development (d)	304	165	131	296	-8	-2.6
Voluntary/part-time work (e)	16,989	8,313	9,203	17,516	527	3.1
Other/temporary exemptions (f)	39,073	22,524	15,977	38,501	-572	-1.5
All NSA job seekers (g)	264,704	159,025	96,254	255,279	-9,425	-3.6

(a) Persons with NSA eligibility who received CDEP Participant Supplement or add ons while participating in CDEP Projects.

(b) Persons who did not receive a payment due to their income and/or that of their partner. This group is often referred to as zero-paid.

(c) Activity code "incapacitated" relates to NSA recipients who have become temporarily ill or incapacitated.

(d) Those customers exempted from job search while they develop self-employment opportunities.

(e) Those customers undertaking approved full-time voluntary work or combinations of voluntary and part-time work who are not required to seek work.

(f) Includes other customers known not to have job search obligations. See 'Job seekers' in Explanatory Notes.

(g) Those customers who received a payment and generally are required to search for work. These customers form the basis of the population group in Tables 4 - 7.

Notes:

- For information on short-term and long-term categories please refer to the Glossary.

- Most of the figures in this publication are averages and have been rounded. As a result, discrepancies may occur between sums of component items and totals, and in the calculation of variations.

TABLE 3 - YOUTH ALLOWEES (OTHER) - DERIVATION OF THE JOB SEEKER POPULATION

	Variation					
	February	March			February - March	
	2008	Males	Females	Persons	Number	Per cent
Short-term YA (other) Customers	32,545	16,456	14,618	31,074	-1,471	-4.5
CPS recipients (a)	1,131	744	406	1,150	19	1.7
Did not receive a payment (b)	605	323	358	681	76	12.6
Received a payment	30,809	15,389	13,854	29,243	-1,566	-5.1
Part-time study & work (c)	4	1	1	2	-2	-50.0
Part-time study & other YA activities (d)	47	23	38	61	14	29.8
Incapacitated (e)	1,630	765	843	1,608	-22	-1.3
Training	1,154	823	481	1,304	150	13.0
Self-employment development (e)	2	0	2	2	0	0.0
Full-time voluntary work	0	0	0	0	0	0.0
Other non-job seekers (e)	1,630	644	940	1,584	-46	-2.8
Short-term YA (other) job seekers (f)	26,342	13,133	11,549	24,682	-1,660	-6.3
Long-term YA (other) Customers	37,183	16,340	18,475	34,815	-2,368	-6.4
CPS recipients (a)	923	580	368	948	25	2.7
Did not receive a payment (b)	1,103	516	672	1,188	85	7.7
Received a payment	35,157	15,244	17,435	32,679	-2,478	-7.0
Part-time study & work (c)	2	0	1	1	-1	-50.0
Part-time study & other YA activities (d)	28	19	24	43	15	53.6
Incapacitated (e)	1,194	439	717	1,156	-38	-3.2
Training	2,709	1,527	1,309	2,836	127	4.7
Self-employment development (e)	5	1	1	2	-3	-60.0
Full-time voluntary work	0	0	0	0	0	0.0
Other non-job seekers (e)	1,339	462	824	1,286	-53	-4.0
Long-term YA (other) job seekers (f)	29,880	12,796	14,559	27,355	-2,525	-8.5
All YA (other) Customers	69,728	32,796	33,093	65,889	-3,839	-5.5
CPS recipients (a)	2,054	1,324	774	2,098	44	2.1
Did not receive a payment (b)	1,708	839	1,030	1,869	161	9.4
Received a payment	65,966	30,633	31,289	61,922	-4,044	-6.1
Part-time study & work (c)	6	1	2	3	-3	-50.0
Part-time study & other YA activities (d)	75	42	62	104	29	38.7
Incapacitated (e)	2,824	1,204	1,560	2,764	-60	-2.1
Training	3,863	2,350	1,790	4,140	277	7.2
Self-employment development (e)	7	1	3	4	-3	-42.9
Full-time voluntary work	0	0	0	0	0	0.0
Other non-job seekers (e)	2,969	1,106	1,764	2,870	-99	-3.3
All YA (other) job seekers (f)	56,222	25,929	26,108	52,037	-4,185	-7.4

(a) Persons with YA eligibility who received CDEP Participant Supplement or add ons while participating in CDEP projects.

(b) Persons who did not receive a payment due to their own income and/or that of their partner or parents, where applicable. This group is often referred to as zero-paid.

(c) Those customers undertaking approved part-time study and work who are considered to have a full activity load and are not required to seek work.

(d) Those customers undertaking approved part-time study and other activities who are considered to have a full activity load and are not required to seek work.

(e) These categories are defined in the same way as in Table 2, except that those customers combining these activities with part-time study are classified under part-time study and other activities.

(f) Those customers who received a payment and generally are required to search for work. These customers form the basis of the population group in Tables 4 - 7.

Notes:

- For information on short-term and long-term categories please refer to the Glossary.

- Most of the figures in this publication are averages and have been rounded. As a result, discrepancies may occur between sums of component items and totals, and in the calculation of variations.

TABLE 4 - JOB SEEKERS RECEIVING NEWSTART ALLOWANCE AND YOUTH ALLOWANCE (OTHER)
TIME SERIES (a)

	Short-term	Long-term	Total
March 2006	164,016	214,293	378,309
April 2006	161,900	209,435	371,335
May 2006	162,182	207,935	370,117
June 2006	162,331	205,212	367,543
July 2006	165,898	213,281	379,179
August 2006	161,929	207,905	369,834
September 2006	159,462	203,024	362,486
October 2006	156,815	198,967	355,782
November 2006	152,125	193,719	345,844
December 2006	153,342	201,044	354,386
January 2007	165,924	209,395	375,319
February 2007	165,581	205,384	370,965
March 2007	157,827	195,351	353,178
April 2007	153,350	188,871	342,221
May 2007	151,083	183,234	334,317
June 2007	148,602	177,562	326,164
July 2007	149,043	178,467	327,510
August 2007	141,433	171,107	312,540
September 2007	136,186	166,762	302,948
October 2007	132,332	164,716	297,048
November 2007	127,425	159,046	286,471
December 2007	132,454	169,573	302,027
January 2008	145,046	177,005	322,051
February 2008	147,610	173,316	320,926
March 2008	141,568	165,748	307,316
<i>Variation February 2008 - March 2008</i>			
Number	-6,042	-7,568	-13,610
Per cent	-4.1	-4.4	-4.2

(a) This table presents data using the revised method of measuring the number of people receiving labour market payment introduced in July 2002. Revised historical data from May 1998 to June 2002 is in Table B of July 2002 publication.

Notes:

- For information on short-term and long-term categories please refer to the Glossary.

- Most of the figures in this publication are averages and have been rounded. As a result, discrepancies may occur between sums of component items and totals, and in the calculation of variations.

**TABLE 5 - JOB SEEKERS RECEIVING NEWSTART ALLOWANCE AND YOUTH ALLOWANCE (OTHER)
BY STATE**

<i>State</i>	February 2008	March 2008	Variation	
			February - March Number	Per cent
SHORT-TERM JOB SEEKERS				
New South Wales	51,493	49,461	-2,032	-3.9
Victoria	33,941	32,131	-1,810	-5.3
Queensland	29,776	29,112	-664	-2.2
South Australia	12,505	11,694	-811	-6.5
Western Australia	11,345	11,053	-292	-2.6
Tasmania	4,081	3,752	-329	-8.1
Northern Territory	3,182	3,175	-7	-0.2
Australian Capital Territory	1,287	1,190	-97	-7.5
AUSTRALIA	147,610	141,568	-6,042	-4.1
LONG-TERM JOB SEEKERS				
New South Wales	64,154	61,115	-3,039	-4.7
Victoria	42,469	40,580	-1,889	-4.4
Queensland	25,471	24,364	-1,107	-4.3
South Australia	16,164	15,498	-666	-4.1
Western Australia	9,794	9,542	-252	-2.6
Tasmania	7,177	6,767	-410	-5.7
Northern Territory	6,844	6,753	-91	-1.3
Australian Capital Territory	1,243	1,129	-114	-9.2
AUSTRALIA	173,316	165,748	-7,568	-4.4
TOTAL JOB SEEKERS				
New South Wales	115,647	110,576	-5,071	-4.4
Victoria	76,410	72,711	-3,699	-4.8
Queensland	55,247	53,476	-1,771	-3.2
South Australia	28,669	27,192	-1,477	-5.2
Western Australia	21,139	20,595	-544	-2.6
Tasmania	11,258	10,519	-739	-6.6
Northern Territory	10,026	9,928	-98	-1.0
Australian Capital Territory	2,530	2,319	-211	-8.3
AUSTRALIA	320,926	307,316	-13,610	-4.2

Notes:

- Most of the figures in this publication are averages and have been rounded. As a result, discrepancies may occur between sums of component items and totals, and in the calculation of variations.

**TABLE 6 - JOB SEEKERS RECEIVING NEWSTART ALLOWANCE AND YOUTH ALLOWANCE (OTHER)
BY AGE AND SEX, AS AT MARCH 2008**

Age	Short-term job seekers		Long-term job seekers		Total job seekers	
	Number	Per cent	Number	Per cent	Number	Per cent
MALES						
Less than 18 years	4,440	4.9	2,494	2.6	6,934	3.7
18 - 20 years	8,690	9.6	10,301	10.9	18,991	10.3
21 - 24 years	14,745	16.3	10,978	11.6	25,723	13.9
25 - 29 years	14,771	16.3	11,591	12.3	26,362	14.3
30 - 39 years	22,042	24.4	19,843	21.0	41,885	22.6
40 - 49 years	13,842	15.3	16,543	17.5	30,385	16.4
50 - 59 years	8,475	9.4	14,201	15.0	22,676	12.3
60 years and over	3,363	3.7	8,637	9.1	12,000	6.5
Total	90,368	100.0	94,588	100.0	184,956	100.0
FEMALES						
Less than 18 years	4,343	8.5	3,239	4.6	7,582	6.2
18 - 20 years	7,203	14.1	11,318	15.9	18,521	15.1
21 - 24 years	8,438	16.5	8,508	12.0	16,946	13.8
25 - 29 years	5,653	11.0	5,926	8.3	11,579	9.5
30 - 39 years	8,075	15.8	10,449	14.7	18,524	15.1
40 - 49 years	8,941	17.5	14,616	20.5	23,557	19.3
50 - 59 years	6,644	13.0	12,926	18.2	19,570	16.0
60 years and over	1,903	3.7	4,178	5.9	6,081	5.0
Total	51,200	100.0	71,160	100.0	122,360	100.0
PERSONS						
Less than 18 years	8,783	6.2	5,733	3.5	14,516	4.7
18 - 20 years	15,893	11.2	21,619	13.0	37,512	12.2
21 - 24 years	23,183	16.4	19,486	11.8	42,669	13.9
25 - 29 years	20,424	14.4	17,517	10.6	37,941	12.3
30 - 39 years	30,117	21.3	30,292	18.3	60,409	19.7
40 - 49 years	22,783	16.1	31,159	18.8	53,942	17.6
50 - 59 years	15,119	10.7	27,127	16.4	42,246	13.7
60 years and over	5,266	3.7	12,815	7.7	18,081	5.9
Total	141,568	100.0	165,748	100.0	307,316	100.0

**TABLE 7 - JOB SEEKERS RECEIVING NEWSTART ALLOWANCE AND YOUTH ALLOWANCE
(OTHER) BY AREA SUPPORT OFFICE AND CUSTOMER SERVICE CENTRE**

<i>Area Support Office and Customer Service Centre</i>	February 2008	March 2008	Variation	
			February - March Number	Per cent
<i>SYDNEY EAST NEW SOUTH WALES</i>				
Bankstown	3,287	3,217	-70	-2.1
Bondi Junction	994	972	-22	-2.2
Burwood	1,449	1,411	-38	-2.6
Campsie	2,348	2,223	-125	-5.3
Caringbah	1,077	1,055	-22	-2.0
Chatswood	798	775	-23	-2.9
Corrimal	1,058	1,018	-40	-3.8
Dapto	1,058	1,043	-15	-1.4
Darlinghurst	1,398	1,338	-60	-4.3
Darlinghurst CCU	45	37	-8	%
Haymarket	0	0	0	%
Hornsby	683	650	-33	-4.8
Hurstville	1,206	1,177	-29	-2.4
Lakemba	22	23	1	%
Leichhardt	1,218	1,136	-82	-6.7
Maroubra	1,150	1,156	6	0.5
Marrickville	1,348	1,327	-21	-1.6
Northern Beaches	976	950	-26	-2.7
Participation Sydney East	11	8	-3	%
Redfern	1,231	1,112	-119	-9.7
Revesby	3	3	0	%
Rockdale	1,143	1,100	-43	-3.8
Ryde	740	744	4	0.5
Shellharbour	1,368	1,276	-92	-6.7
Sutherland	379	364	-15	-4.0
Wollongong	1,431	1,313	-118	-8.2
Other (a)	13	9	-4	%
Total	26,434	25,437	-997	-3.8

Note: For footnotes see end of table.

**TABLE 7 - JOB SEEKERS RECEIVING NEWSTART ALLOWANCE AND YOUTH ALLOWANCE
(OTHER) BY AREA SUPPORT OFFICE AND CUSTOMER SERVICE CENTRE**

<i>Area Support Office and Customer Service Centre</i>	February 2008	March 2008	Variation	
			February - March Number	Per cent
<i>SYDNEY WEST NEW SOUTH WALES</i>				
Auburn	1,935	1,859	-76	-3.9
Baulkham Hills	596	550	-46	-7.7
Blacktown	2,671	2,557	-114	-4.3
Cabramatta	1,829	1,774	-55	-3.0
Camden	591	545	-46	-7.8
Campbelltown	2,065	1,970	-95	-4.6
Fairfield	2,860	2,738	-122	-4.3
Hawkesbury	814	764	-50	-6.1
Ingleburn	1,288	1,230	-58	-4.5
Katoomba	688	650	-38	-5.5
Liverpool	3,364	3,299	-65	-1.9
Merrylands	1,641	1,594	-47	-2.9
Mt Druitt	2,516	2,393	-123	-4.9
Parramatta	1,621	1,582	-39	-2.4
Penrith	1,627	1,563	-64	-3.9
Springwood	377	359	-18	-4.8
St Marys	1,493	1,395	-98	-6.6
Other (a)	30	37	7	%
Total	28,006	26,859	-1,147	-4.1

Note: For footnotes see end of table.

**TABLE 7 - JOB SEEKERS RECEIVING NEWSTART ALLOWANCE AND YOUTH ALLOWANCE
(OTHER) BY AREA SUPPORT OFFICE AND CUSTOMER SERVICE CENTRE**

<i>Area Support Office and Customer Service Centre</i>	February 2008	March 2008	Variation	
			February - March Number	Per cent
<i>HUNTER NEW SOUTH WALES</i>				
Armidale	991	911	-80	-8.1
Cessnock	829	791	-38	-4.6
Charlestown	1,836	1,738	-98	-5.3
Ettalong	856	822	-34	-4.0
Glen Innes	269	246	-23	-8.6
Gosford	1,473	1,401	-72	-4.9
Gunnedah	465	433	-32	-6.9
Inverell	737	703	-34	-4.6
Kempsey	1,172	1,113	-59	-5.0
Kurri Kurri	483	468	-15	-3.1
Lakehaven	1,442	1,395	-47	-3.3
Maitland	1,542	1,457	-85	-5.5
Mayfield	1,050	958	-92	-8.8
Muswellbrook	486	487	1	0.2
Nambucca Heads	1,033	953	-80	-7.7
Nelson Bay	509	491	-18	-3.5
Newcastle	1,409	1,315	-94	-6.7
Port Macquarie	1,753	1,693	-60	-3.4
Raymond Terrace	974	926	-48	-4.9
Singleton	286	288	2	0.7
Tamworth	1,747	1,666	-81	-4.6
Taree	1,804	1,717	-87	-4.8
The Entrance	1,222	1,173	-49	-4.0
Toronto	942	860	-82	-8.7
Tuncurry (Forster)	872	843	-29	-3.3
Wallsend	1,596	1,488	-108	-6.8
Wyong	702	714	12	1.7
Other (a)	25	29	4	%
Total	28,505	27,079	-1,426	-5.0

Note: For footnotes see end of table.

**TABLE 7 - JOB SEEKERS RECEIVING NEWSTART ALLOWANCE AND YOUTH ALLOWANCE
(OTHER) BY AREA SUPPORT OFFICE AND CUSTOMER SERVICE CENTRE**

<i>Area Support Office and Customer Service Centre</i>	February 2008	March 2008	Variation	
			February - March Number	Per cent
<i>SOUTH WEST NEW SOUTH WALES</i>				
Batemans Bay	879	842	-37	-4.2
Bathurst	991	930	-61	-6.2
Bega	750	732	-18	-2.4
Belconnen	748	678	-70	-9.4
Bowral	537	501	-36	-6.7
Braddon	797	735	-62	-7.8
Cooma	270	257	-13	-4.8
Cowra	499	479	-20	-4.0
Dubbo	2,005	1,946	-59	-2.9
Goulburn	718	683	-35	-4.9
Griffith	596	527	-69	-11.6
Gungahlin	63	58	-5	%
Lanyon	37	37	0	%
Leeton	331	324	-7	-2.1
Lithgow	655	608	-47	-7.2
Mudgee	728	711	-17	-2.3
Narooma	384	361	-23	-6.0
Nowra	2,082	2,013	-69	-3.3
Orange	1,036	1,015	-21	-2.0
Parkes	960	926	-34	-3.5
Queanbeyan	410	371	-39	-9.5
Tuggeranong	499	453	-46	-9.2
Tumut	305	287	-18	-5.9
Ulladulla	537	524	-13	-2.4
Wagga	1,582	1,481	-101	-6.4
Woden	382	361	-21	-5.5
Yass	118	106	-12	-10.2
Young	462	438	-24	-5.2
Other (a)	15	16	1	%
Total	19,376	18,400	-976	-5.0

Note: For footnotes see end of table.

**TABLE 7 - JOB SEEKERS RECEIVING NEWSTART ALLOWANCE AND YOUTH ALLOWANCE
(OTHER) BY AREA SUPPORT OFFICE AND CUSTOMER SERVICE CENTRE**

<i>Area Support Office and Customer Service Centre</i>	February 2008	March 2008	Variation	
			February - March Number	Per cent
<i>NORTH CENTRAL VICTORIA</i>				
Airport West	995	928	-67	-6.7
Albury	2,139	2,002	-137	-6.4
Box Hill	1,567	1,500	-67	-4.3
Broadmeadows	3,358	3,213	-145	-4.3
Camberwell	835	821	-14	-1.7
Darebin	3,140	2,978	-162	-5.2
Deniliquin	304	287	-17	-5.6
Echuca	507	502	-5	-1.0
Epping	1,541	1,536	-5	-0.3
Greensborough	1,402	1,335	-67	-4.8
Heidelberg	25	15	-10	%
Moreland	1,930	1,787	-143	-7.4
Newmarket	1,236	1,176	-60	-4.9
Seymour	586	568	-18	-3.1
Shepparton	1,988	1,791	-197	-9.9
South Melbourne	594	555	-39	-6.6
Sunbury	672	620	-52	-7.7
Wangaratta	1,502	1,470	-32	-2.1
Windsor	2,092	1,983	-109	-5.2
Yarra	1,668	1,558	-110	-6.6
Other (a)	15	15	0	%
Total	28,096	26,640	-1,456	-5.2

Note: For footnotes see end of table.

**TABLE 7 - JOB SEEKERS RECEIVING NEWSTART ALLOWANCE AND YOUTH ALLOWANCE
(OTHER) BY AREA SUPPORT OFFICE AND CUSTOMER SERVICE CENTRE**

<i>Area Support Office and Customer Service Centre</i>	February 2008	March 2008	Variation	
			February - March Number	Per cent
<i>SOUTH EAST VICTORIA</i>				
Bairnsdale	732	704	-28	-3.8
Belgrave	405	380	-25	-6.2
Cheltenham	1,334	1,261	-73	-5.5
Cranbourne	1,063	1,041	-22	-2.1
Dandenong	2,233	2,126	-107	-4.8
Fountain Gate	1,538	1,481	-57	-3.7
Frankston	2,196	2,087	-109	-5.0
Glen Waverley	825	831	6	0.7
Hastings	466	452	-14	-3.0
Lilydale	1,365	1,312	-53	-3.9
Mornington	458	439	-19	-4.1
Morwell	2,136	2,000	-136	-6.4
Oakleigh	1,410	1,341	-69	-4.9
Pakenham	478	465	-13	-2.7
Ringwood	1,396	1,286	-110	-7.9
Rosebud	827	826	-1	-0.1
Rowville	335	339	4	1.2
Sale	696	670	-26	-3.7
Springvale	1,673	1,625	-48	-2.9
Wantirna	1,021	995	-26	-2.5
Warragul	532	503	-29	-5.5
Wonthaggi	468	481	13	2.8
Other (a)	11	7	-4	%
Total	23,598	22,652	-946	-4.0

Note: For footnotes see end of table.

**TABLE 7 - JOB SEEKERS RECEIVING NEWSTART ALLOWANCE AND YOUTH ALLOWANCE
(OTHER) BY AREA SUPPORT OFFICE AND CUSTOMER SERVICE CENTRE**

<i>Area Support Office and Customer Service Centre</i>	February 2008	March 2008	Variation	
			February - March Number	Per cent
WEST VICTORIA				
Ararat	255	235	-20	-7.8
Ballarat	2,418	2,300	-118	-4.9
Bendigo	2,427	2,260	-167	-6.9
Bendigo Central	419	383	-36	-8.6
Colac	426	409	-17	-4.0
Corio	1,585	1,534	-51	-3.2
Footscray	1,427	1,332	-95	-6.7
Geelong	2,780	2,616	-164	-5.9
Hamilton	389	380	-9	-2.3
Horsham	644	622	-22	-3.4
Maryborough	458	453	-5	-1.1
Melton	1,154	1,101	-53	-4.6
Mildura	1,713	1,628	-85	-5.0
Newport	1,001	931	-70	-7.0
Portland	373	355	-18	-4.8
Stawell	185	170	-15	-8.1
Sunshine	2,430	2,354	-76	-3.1
Swan Hill	810	771	-39	-4.8
Warrnambool	822	777	-45	-5.5
Watergardens	2,925	2,753	-172	-5.9
Werribee	2,348	2,269	-79	-3.4
Other (a)	9	10	1	%
Total	26,998	25,643	-1,355	-5.0

Note: For footnotes see end of table.

**TABLE 7 - JOB SEEKERS RECEIVING NEWSTART ALLOWANCE AND YOUTH ALLOWANCE
(OTHER) BY AREA SUPPORT OFFICE AND CUSTOMER SERVICE CENTRE**

<i>Area Support Office and Customer Service Centre</i>	February 2008	March 2008	Variation	
			February - March Number	Per cent
CENTRAL & NORTHERN QUEENSLAND				
Atherton	593	579	-14	-2.4
Ayr	385	402	17	4.4
Bamaga RASC (Nth Peninsula RASC)	41	36	-5	%
Biloela	152	150	-2	-1.3
Bowen	439	419	-20	-4.6
Cairns Families	12	13	1	%
Cairns Jobseekers	2,473	2,544	71	2.9
Cairns Remote (Indigenous ISC)	558	544	-14	-2.5
Cairns Seniors & Carers	3	2	-1	%
Charters Towers	272	267	-5	-1.8
Edmonton	2	1	-1	%
Emerald	251	242	-9	-3.6
Gladstone	773	751	-22	-2.8
Greenfields	6	6	0	%
Ingham	321	316	-5	-1.6
Innisfail	508	477	-31	-6.1
Longreach	92	86	-6	%
Mackay Jobseekers	1,220	1,289	69	5.7
Mackay Seniors & Carers	6	4	-2	%
Mareeba	467	472	5	1.1
Mossman	322	339	17	5.3
Mt Isa	716	716	0	0.0
Normanton	130	127	-3	-2.3
Palm Island	269	271	2	0.7
Rockhampton Families	13	14	1	%
Rockhampton Jobseekers	1,745	1,663	-82	-4.7
Rockhampton Seniors & Carers	2	2	0	%
Smithfield	3	0	-3	%
Thursday Island	200	203	3	1.5
Townsville City	5	2	-3	%
Townsville Families	7	6	-1	%
Townsville Jobseekers	2,422	2,346	-76	-3.1
Townsville Seniors & Carers	2	3	1	%
Western Cape RASC	182	178	-4	-2.2
Whitsunday	288	298	10	3.5
Yarrabah RASC	309	298	-11	-3.6
Yeppoon	331	323	-8	-2.4
Other (a)	80	74	-6	%
Total	15,600	15,463	-137	-0.9

Note: For footnotes see end of the table.

**TABLE 7 - JOB SEEKERS RECEIVING NEWSTART ALLOWANCE AND YOUTH ALLOWANCE
(OTHER) BY AREA SUPPORT OFFICE AND CUSTOMER SERVICE CENTRE**

<i>Area Support Office and Customer Service Centre</i>	February 2008	March 2008	Variation	
			February - March Number	Per cent
<i>SOUTH & EAST QUEENSLAND</i>				
Bundaberg	2,675	2,618	-57	-2.1
Caboolture	1,699	1,605	-94	-5.5
Caboolture FCC and SC&R	0	0	0	%
Caloundra	754	725	-29	-3.8
Cherbourg	82	78	-4	%
Chermside	793	772	-21	-2.6
Fortitude Valley	937	883	-54	-5.8
Gympie	1,159	1,095	-64	-5.5
Hervey Bay	1,134	1,098	-36	-3.2
Kawana Waters	344	332	-12	-3.5
Kingaroy	722	692	-30	-4.2
Kippa-Ring	1,063	1,017	-46	-4.3
Maroochydore	1,054	1,018	-36	-3.4
Maryborough	1,044	1,004	-40	-3.8
Mitchelton	729	710	-19	-2.6
Nambour	828	776	-52	-6.3
Noosa	753	725	-28	-3.7
Nundah	778	700	-78	-10.0
Strathpine	714	712	-2	-0.3
Toowong	625	540	-85	-13.6
Other (a)	18	23	5	%
Total	17,905	17,123	-782	-4.4

Note: For footnotes see end of table.

**TABLE 7 - JOB SEEKERS RECEIVING NEWSTART ALLOWANCE AND YOUTH ALLOWANCE
(OTHER) BY AREA SUPPORT OFFICE AND CUSTOMER SERVICE CENTRE**

<i>Area Support Office and Customer Service Centre</i>	February 2008	March 2008	Variation	
			February - March Number	Per cent
<i>SOUTH & WEST QUEENSLAND</i>				
Beenleigh	1,268	1,220	-48	-3.8
Browns Plains	1,116	1,095	-21	-1.9
Capalaba	506	485	-21	-4.2
Charleville	195	185	-10	-5.1
Cleveland	590	581	-9	-1.5
Dalby	528	511	-17	-3.2
Goodna	831	806	-25	-3.0
Goondiwindi	333	310	-23	-6.9
Inala	1,085	1,032	-53	-4.9
Ipswich	1,770	1,688	-82	-4.6
Mt Gravatt	1,209	1,120	-89	-7.4
Roma	179	158	-21	-11.7
South Brisbane	705	642	-63	-8.9
Stanthorpe	339	344	5	1.5
Stones Corner	1,134	1,073	-61	-5.4
Toowoomba	1,949	1,894	-55	-2.8
Warwick	426	410	-16	-3.8
Woodridge	1,413	1,379	-34	-2.4
Wynnum	566	544	-22	-3.9
Other (a)	9	11	2	%
Total	16,151	15,488	-663	-4.1

Note: For footnotes see end of table.

**TABLE 7 - JOB SEEKERS RECEIVING NEWSTART ALLOWANCE AND YOUTH ALLOWANCE
(OTHER) BY AREA SUPPORT OFFICE AND CUSTOMER SERVICE CENTRE**

<i>Area Support Office and Customer Service Centre</i>	February 2008	March 2008	Variation	
			February - March Number	Per cent
<i>SOUTH AUSTRALIA</i>				
Berri	962	877	-85	-8.8
Broken Hill	836	809	-27	-3.2
Ceduna	277	271	-6	-2.2
Coober Pedy	179	178	-1	-0.6
Currie Street	577	510	-67	-11.6
Elizabeth	2,468	2,367	-101	-4.1
Enfield	1,431	1,300	-131	-9.2
Gawler	1,117	1,052	-65	-5.8
Glenelg	807	745	-62	-7.7
Kadina	706	680	-26	-3.7
Kilkenny	1,618	1,572	-46	-2.8
Marion	1,752	1,638	-114	-6.5
Modbury	1,645	1,523	-122	-7.4
Mt Barker	516	502	-14	-2.7
Mt Gambier	1,221	1,127	-94	-7.7
Murray Bridge	815	785	-30	-3.7
Noarlunga	2,380	2,342	-38	-1.6
Norwood	1,384	1,320	-64	-4.6
Port Adelaide	1,495	1,383	-112	-7.5
Port Augusta	771	731	-40	-5.2
Port Lincoln	605	555	-50	-8.3
Port Pirie	972	952	-20	-2.1
Salisbury	2,329	2,206	-123	-5.3
Torrensville	1,296	1,197	-99	-7.6
Victor Harbor	536	536	0	0.0
Whyalla	773	737	-36	-4.7
Other (a)	54	53	-1	%
Total	29,522	27,948	-1,574	-5.3

Note: For footnotes see end of table.

**TABLE 7 - JOB SEEKERS RECEIVING NEWSTART ALLOWANCE AND YOUTH ALLOWANCE
(OTHER) BY AREA SUPPORT OFFICE AND CUSTOMER SERVICE CENTRE**

<i>Area Support Office and Customer Service Centre</i>	February 2008	March 2008	Variation	
			February - March Number	Per cent
WEST AUSTRALIA				
Albany	732	708	-24	-3.3
Armadale	732	709	-23	-3.1
Bunbury	1,261	1,213	-48	-3.8
Busselton	222	210	-12	-5.4
Cannington	1,100	1,081	-19	-1.7
Carnarvon	288	306	18	6.3
Cocos Islands	37	43	6	%
Collie	2	2	0	%
Community Team Perth	92	95	3	%
Curtin on Campus SSC	27	17	-10	%
Esperance	253	244	-9	-3.6
Fremantle	1,058	964	-94	-8.9
Fremantle SACC	2	1	-1	%
Fremantle SSC	10	6	-4	%
Geraldton	1,127	1,116	-11	-1.0
Gosnells	726	717	-9	-1.2
Innaloo	1,041	982	-59	-5.7
Joondalup	1,005	967	-38	-3.8
Joondalup SACC	1	0	-1	%
Joondalup SSC	11	9	-2	%
Kalgoorlie	562	574	12	2.1
Karratha	268	264	-4	-1.5
Laverton RASC	60	61	1	%
Mandurah	866	883	17	2.0
Meekatharra RASC	139	136	-3	-2.2
Midland	1,496	1,464	-32	-2.1
Mirrabooka	1,302	1,228	-74	-5.7
Morley	1,240	1,224	-16	-1.3
Morley - Dewar Street	5	4	-1	%
Morley SSC	5	1	-4	%
Newman RASC	160	170	10	6.3
Northam	425	415	-10	-2.4
Rockingham	1,192	1,181	-11	-0.9
South Hedland	401	404	3	0.7
Spearwood	664	650	-14	-2.1
Victoria Park	1,172	1,134	-38	-3.2
Warwick Grove	527	471	-56	-10.6
Other (a)	48	54	6	%
Total	20,259	19,708	-551	-2.7

Note: For footnotes see end of table.

**TABLE 7 - JOB SEEKERS RECEIVING NEWSTART ALLOWANCE AND YOUTH ALLOWANCE
(OTHER) BY AREA SUPPORT OFFICE AND CUSTOMER SERVICE CENTRE**

<i>Area Support Office and Customer Service Centre</i>	February 2008	March 2008	Variation	
			February - March Number	Per cent
TASMANIA				
Bridgewater	588	578	-10	-1.7
Burnie	1,359	1,290	-69	-5.1
Devonport	1,383	1,251	-132	-9.5
Glenorchy	1,737	1,659	-78	-4.5
Hobart	1,278	1,163	-115	-9.0
Huonville	437	427	-10	-2.3
Launceston	3,053	2,846	-207	-6.8
Mowbray	9	10	1	%
Rosny Park	950	904	-46	-4.8
Sorell	482	435	-47	-9.8
Other (a)	53	46	-7	%
Total	11,329	10,609	-720	-6.4
NORTH AUSTRALIA				
Alice Springs	3,054	3,004	-50	-1.6
Borroloola RASC	37	37	0	%
Broome	406	397	-9	-2.2
Casuarina	850	846	-4	-0.5
Derby	153	150	-3	-2.0
Fitzroy Crossing RASC	59	63	4	%
Halls Creek RASC	187	196	9	4.8
Katherine	1,493	1,530	37	2.5
Knuckey Street	534	537	3	0.6
Kununurra	223	233	10	4.5
Maningrida	375	347	-28	-7.5
Nhulunbuy	779	786	7	0.9
Palmerston	760	754	-6	-0.8
Tangentyere	147	139	-8	-5.4
Tennant Creek	160	149	-11	-6.9
Tennant Creek Remote	103	115	12	11.7
Tiwi Islands RASC	196	186	-10	-5.1
Top End Remote	1,125	1,139	14	1.2
Wadeye RASC	352	335	-17	-4.8
Yuendumu RASC	157	152	-5	-3.2
Other (a)	34	41	7	%
Total	11,184	11,136	-48	-0.4

Note: For footnotes see end of table.

**TABLE 7 - JOB SEEKERS RECEIVING NEWSTART ALLOWANCE AND YOUTH ALLOWANCE
(OTHER) BY AREA SUPPORT OFFICE AND CUSTOMER SERVICE CENTRE**

<i>Area Support Office and Customer Service Centre</i>	February 2008	March 2008	Variation	
			February - March Number	Per cent
PACIFIC CENTRAL				
Ballina	938	889	-49	-5.2
Beaudesert	334	313	-21	-6.3
Biggera Waters	1,140	1,137	-3	-0.3
Bourke	487	457	-30	-6.2
Brunswick Heads	529	502	-27	-5.1
Byron Bay	503	477	-26	-5.2
Casino	603	570	-33	-5.5
Coffs Harbour	2,477	2,380	-97	-3.9
Grafton	1,548	1,469	-79	-5.1
Lightning Ridge	183	183	0	0.0
Lismore	1,790	1,700	-90	-5.0
Maclean	0	0	0	%
Moree	535	495	-40	-7.5
Murwillumbah	531	528	-3	-0.6
Narrabri	417	364	-53	-12.7
Nerang	1,204	1,162	-42	-3.5
Palm Beach	1,591	1,535	-56	-3.5
Robina SCR	4	4	0	%
Southport	1,640	1,584	-56	-3.4
Tweed Heads	1,179	1,119	-60	-5.1
Walgett	255	234	-21	-8.2
Other (a)	35	46	11	%
Total	17,923	17,148	-775	-4.3
OTHER				
Centrelink Call Centres (b)	27	34	7	%
Not coded to an area	11	12	1	%
Rounding adjustment (c)	2	-63	-65	%
AUSTRALIA	320,926	307,316	-13,610	-4.2

(a) Recipients not coded to a Customer Service Centre.

(b) Job seekers receiving NSA / YA (o) in Centrelink Call Centres which are not counted in the various Area Offices.

(c) Prior to the July 2007 publication, the rounding adjustment was included in the Fairfield CSC.

Notes:

- Where the Customer Service Centre has a population less than 100 in either of the reported months, the monthly percentage variation has been suppressed and replaced with the percentage symbol '%'. .

- Most of the figures in this publication are averages and have been rounded. As a result, discrepancies may occur between sums of component items and totals, and in the calculation of variations.

- From July 2007, new Area Support Office boundaries came into effect. A concordance between the new and old Area structures is provided in Table A in the July 2007 edition of this publication.

**TABLE 8 - JOB SEEKERS RECEIVING NEWSTART ALLOWANCE AND YOUTH ALLOWANCE (OTHER)
FORTNIGHTLY EARNINGS (%) AND SEX (a), FORTNIGHT ENDING 21 MARCH 2008**

<i>Fortnightly Earnings</i>	Short-term job seekers	Long-term job seekers	Total job seekers
MALES			
Did not earn an income	84.6	80.6	82.6
Earned an income	15.4	19.4	17.4
Amount earned			
\$0.01-\$62.00	0.6	0.8	0.7
\$62.01-\$142.00	2.1	2.5	2.3
\$142.01-\$236.00	2.4	3.1	2.7
\$236.01-\$316.00	1.8	2.4	2.1
Over \$316.00	8.4	10.6	9.5
Total	100.0	100.0	100.0
<i>Job seekers receiving NSA and YA (other)</i>	90,649	94,538	185,187
FEMALES			
Did not earn an income	75.2	70.4	72.4
Earned an income	24.8	29.6	27.6
Amount earned			
\$0.01-\$62.00	0.9	1.1	1.0
\$62.01-\$142.00	2.9	3.1	3.0
\$142.01-\$236.00	3.5	4.0	3.8
\$236.01-\$316.00	2.7	3.1	2.9
Over \$316.00	14.8	18.4	16.9
Total	100.0	100.0	100.0
<i>Job seekers receiving NSA and YA (other)</i>	51,168	71,036	122,204
PERSONS			
Did not earn an income	81.2	76.2	78.5
Earned an income	18.8	23.8	21.5
Amount earned			
\$0.01-\$62.00	0.7	0.9	0.8
\$62.01-\$142.00	2.4	2.8	2.6
\$142.01-\$236.00	2.8	3.4	3.2
\$236.01-\$316.00	2.1	2.7	2.4
Over \$316.00	10.7	14.0	12.5
Total	100.0	100.0	100.0
<i>Job seekers receiving NSA and YA (other)</i>	141,817	165,574	307,391

(a) Total figures in this table are different from Tables 2 to 7 because of different methodologies applied. Tables 2 to 7 are based on averages of weekly figures while this table is based on point in time data. See Explanatory Notes for further information.

EXPLANATORY NOTES

Introduction

This publication provides monthly statistical information on DEEWR labour market and related payments delivered by Centrelink. These Explanatory Notes provide details of the scope and methodology of the publication, as well as the policy changes which have affected the data since the publication was introduced in December 1995 by the then Department of Social Security.

Prior to December 1995, this publication was titled the *Monthly Job Search and Newstart Allowance Statistics*.

Scope

The primary focus of the publication is to provide information on unemployed people on Newstart Allowance and Youth Allowance, with a particular focus on the total number of job seekers. The number of people on Mature Age Allowance, Partner Allowance and Widow Allowance are also reported.

Methodology

Data in this publication relate to the average number of people who are both eligible (eg. meet 'unemployed' qualification) and entitled (eg. meet income and assets criteria) to receive a payment calculated over a reference month. Averages are calculated using figures collected for each Friday throughout the reference month.

Table 1 provides information on the total number of unemployed people on Newstart Allowance and Youth Allowance. The Youth Allowance population is split into Youth Allowance (full-time students), Youth Allowance (Australian Apprentices) and Youth Allowance (other) categories. Numbers of people on Mature Age Allowance, Partner Allowance and Widow Allowance are also provided.

Tables 2 and 3 provide a summary of the Newstart Allowance and Youth Allowance (other) populations and show the derivation of the respective job seeker populations (see the reference to job seekers in the Comparability of Data section of these Explanatory Notes). These populations are added together to derive the total number of job seekers. Tables 4 to 8 provide information on the total job seeker population.

The earnings data in Table 8 is derived using a different methodology from that of the other tables in the publication. Table 8 is based on the combined population of job seekers who are eligible for and entitled to receive Newstart Allowance or Youth Allowance (other) at the end of the second last week in the month. Thus, the data obtained from this table will not be directly comparable with those calculated using monthly averages in other tables.

Payment History

Youth Allowance

From 1 July 1998 Youth Allowance was introduced to provide income support to young people, including students, those looking for work, and those who are sick. Youth Allowees may be undertaking full-time study, full-time job search or a combination of approved activities. Some young people will be exempt from the activity test because of their personal circumstances, eg. illness, homelessness or major personal crisis. The Youth Allowance replaced:

- AUSTUDY for 16-24 year olds (and certain 15 year olds);
- Newstart Allowance for 16-20 year olds (and certain 15 year olds);
- Youth Training Allowance for 16-17 year olds (and certain 15 year olds);
- Sickness Allowance for 16-20 year olds (and certain 15 year olds); and
- More-than-minimum rate Family Payment for secondary students aged 16-18 not getting AUSTUDY.

Youth Allowance recipients are subject to the parental means test. Under previous arrangements, unemployed people aged 18 to 20 were not subject to the parental means test, unlike 18 to 20 year old students.

Special provisions applied for 18 to 20 year olds who were already on Newstart or Sickness Allowance at the date of announcement of Youth Allowance, and who remained on payment when Youth Allowance commenced on 1 July 1998. This group were able to remain on their existing payment and retain their existing benefits.

Youth Allowance had a significant downward effect on Newstart Allowance numbers from July 1998 and total job seeker numbers due to the parental means test.

Newstart Allowance

From 1 July 1998, Newstart Allowance for 16-20 year olds (and certain 15 year olds) was replaced by Youth Allowance. Young people aged 18 to 20 years old who were on Newstart or Sickness Allowance at the date of announcement of Youth Allowance and when Youth Allowance commenced on 1 July 1998, were able to remain on Newstart Allowance.

From 20 September 1996, Job Search Allowance and Newstart Allowance were combined into one payment - Newstart Allowance - which was payable to eligible recipients aged 18 years and over and to some people who were in receipt of Job Search Allowance and aged under 18 at 31 December 1994 (see Job Search Allowance).

Prior to 20 September 1996, Newstart Allowance was payable to eligible persons over 18 years who had been registered as unemployed with the Commonwealth Employment Service (CES) for 12 months or more.

<i>Job Search Allowance</i>	<p>From 20 September 1996, the payment was combined with Newstart Allowance to form one payment called Newstart Allowance. All Job Search Allowance recipients were transferred to Newstart Allowance.</p> <p>Prior to 20 September 1996, Job Search Allowance was payable to eligible persons who had been registered as unemployed with the CES for up to 12 months. It was also payable to eligible persons who were in receipt of Job Search Allowance and under 18 years of age at 31 December 1994. Persons aged 15 to 18 years who were not receiving Job Search Allowance prior to 1 January 1995 commenced on Youth Training Allowance.</p>
<i>Sickness Allowance</i>	<p>From 17 March 1996, persons in receipt of Newstart Allowance or Youth Training Allowance who became temporarily incapacitated no longer transferred to Sickness Allowance after 13 weeks. This change had the effect of increasing total Newstart Allowance/Youth Training Allowance figures but did not affect job seeker figures as those recipients who were incapacitated were excluded from the Newstart and Youth Training job seeker populations.</p> <p>Under current arrangements, these recipients remain on their existing payments but are exempt from the activity test for the duration of their medical certificates. People who become unemployed because of illness, and those who suffer a potential loss of income due to sickness, are paid Newstart Allowance because they are unemployed.</p> <p>Sickness Allowance for 16 to 20 year olds (and certain 15 year olds) was replaced by Youth Allowance, which was introduced on 1 July 1998 (see Youth Allowance).</p>
<i>Partner Allowance</i>	<p>From 20 September 2003, Partner Allowance was closed to new claimants. People on Partner Allowance before this date can remain on the allowance while they remain 'current', that is retain eligibility and entitlement for the allowance.</p> <p>From 1 July 1995 Partner Allowance has only been granted to persons who are dependent partners of pensioners and allowees and who were born before 1 July 1955, have no dependent children and have little or no recent workforce experience. Other dependent partners have to qualify for an income support payment in their own right, such as Newstart Allowance.</p> <p>Partner Allowance was introduced in September 1994, and was paid to partners of persons receiving Job Search Allowance, Newstart Allowance, Sickness Allowance or Special Benefit if certain eligibility criteria were satisfied.</p>
<i>Youth Training Allowance</i>	<p>Youth Training Allowance was replaced by Youth Allowance on 1 July 1998 (see Youth Allowance).</p> <p>From 1 January 1995, eligible persons aged under 18 years who were new entrants to the job search pool were paid Youth Training Allowance. (People who were in receipt of Job Search</p>

Allowance and aged under 18 years at 31 December 1994 continued to be paid Job Search Allowance. From 20 September 1996, those young persons still being paid Job Search Allowance were transferred to Newstart Allowance.)

Widow Allowance Widow Allowance, introduced on 1 January 1995, is payable to females aged 50 years or over who have become widowed, divorced or separated since turning 40 years (50 prior to 20 March 1997), if they meet a number of other criteria relating to current marital status and recent work experience. This has had a slight downwards effect on Newstart Allowance numbers from January 1995.

Mature Age Allowance From 20 September 2003, Mature Age Allowance was closed to new claimants. People on Mature Age Allowance before this date can remain on the allowance while they remain 'current', that is retain eligibility and entitlement for the allowance.

From 1 July 1996, the qualification conditions for Mature Age Allowance changed for new claimants. The requirement for 12 months prior receipt of income support was reduced to 9 months for people transferring from Newstart Allowance and removed entirely for people transferring from non-activity tested payments. The requirement to have been registered as unemployed for 9 months was replaced with a requirement to have no recent workforce experience. Reporting of these new claimants commenced from September 1996.

Mature Age Allowance was introduced on 24 March 1994, and was paid to long-term unemployed persons aged 60 years and over (but below Age Pension age) who had been receiving income support for 9 months or more and who were eligible for Newstart Allowance. The introduction of Mature Age Allowance had a downwards effect on Newstart Allowance numbers from April 1994 until September 2003.

Comparability of Data

There have been significant changes to the data presented in this publication due to a number of events. The main changes are:

- the method of counting recipients;
- the inclusion of some CDEP recipients in the total recipient numbers;
- the introduction of Youth Allowance in July 1998;
- the way 'job seeker' is defined; and
- the way duration is calculated.

People using this data to construct time series should note the following comments.

Definition of Recipient From July 2002, the Department of Family and Community Services (FaCS) introduced a new method to more accurately measure the number of people receiving labour market and related payments. For those receiving labour market and related payments, their eligibility and entitlement status is administered by a payment system called Newstart Common Platform System. Within this system recipients who are both eligible and entitled to receive a payment have a determination status of 'current'.

The new method therefore counts these 'current' recipients.

The old method of counting recipients was specified to include all paid recipients - those who received a payment within a given fortnight. As compiled, however, this count excluded, from mid 1998, recipients who received a 'one-off' payment. These can occur, for instance, when a normal payment is interrupted (eg. payment is cancelled and then restored within that pay period) and a portion of the normal payment is paid.

The time series in Tables 1 and 4 reflect the revised method, as does the remainder of the publication. Revised historical data for these time series from May 1998 to June 2002 can be found in the July 2002 publication.

From July 2003 FaCS introduced a more sustainable methodology for this revised recipient count. Due to limitations in available data sources in 2002, the revised recipient count had to be derived through a complicated process. This more sustainable methodology resulted in slight differences from the recipient numbers used in previous editions.

*Community Development
Employment Projects
(CDEP)* From 20 March 2000, eligible participants in CDEP started receiving CDEP participant supplement and other add-ons, such as rent assistance, as part of income support payments. This added a number of new recipients to those eligible for payments reported in this publication.

*Introduction of
Youth Allowance* The sum of the number of Newstart Allowees and Youth Training Allowees prior to July 1998 is broadly comparable with the sum of Newstart Allowees and Youth Allowees (other) after July 1998. There are two main problems in comparing these two series. The first is the exclusion of some 18 to 20 year old unemployed people due to the application of the Youth Allowance parental means test (see the Youth Allowance section under Payment History). The second is the inclusion of Sickness Allowees in the Youth Allowance (other) population.

There is greater comparability between total Newstart Allowance and Youth Training Allowance job seekers prior to July 1998 and total Newstart Allowance and Youth Allowance (other) job seekers after July 1998. This is because the Sickness Allowance group is excluded from the job seeker total. The problem, however, of the exclusion of some recipients through the application of the Youth Allowance parental means test still remains.

Job seekers Prior to July 1998, the job seeker category was defined by excluding all Newstart Allowees who did not receive a payment, recipients who were incapacitated, and those receiving a payment who were undertaking training. Some people who were not required to engage in job search were classified as job seekers, including people undertaking full-time voluntary work, people on jury duty and pregnant women around the time of the birth of their child.

From July 1998, the definition of job seekers has been placed on a sounder conceptual basis. It is now derived for Newstart Allowance and Youth Allowance (other) recipients by excluding all people who did not receive a payment due to their own and/or their partner's income, or where applicable, parental income, and all those known not to be required to search for work. People receiving Intensive Support Customised Assistance under Job Network arrangements are classified as job seekers although they may not always be undertaking job search. These people negotiate their activity agreement with their Job Network member.

The total number of job seekers (comparable to pre-July 1998 estimates) is calculated by adding together the number of job seekers in receipt of Newstart Allowance and Youth Allowance (other) - see the Explanatory Notes on Youth Allowance.

Duration

Following system changes in May 1998, duration has been defined according to the time a recipient spends on income support - short-term recipients are those who have been on income support for up to 12 months and long-term recipients are those who have been on income support for 12 months or more.

Prior to 1998, duration was defined according to the time a recipient was registered as unemployed - short-term recipients were people who were registered as unemployed for up to 12 months and long-term recipients were people who were registered for 12 months or more.

Closure of Mature Age and Partner Allowances

From 20 September 2003, Mature Age Allowance and Partner Allowance were closed to new claimants. People on these allowances before this date can remain on that allowance while they remain 'current', that is retain eligibility and entitlement for the allowance. The majority of people who would previously have claimed these payments will now claim Newstart Allowance.

Symbols

n.a. not available
.. not applicable

GLOSSARY

Activity test status	The activity that a Newstart Allowance or Youth Allowance (other) recipient has agreed to undertake in order to meet the activity test. To satisfy the activity test recipients must be actively seeking and willing to take up work or undertaking activities to improve their employment prospects.
Age	Age in years at time of data collection.
Area Support Office	A Centrelink office that supports a set of Customer Service Centres for a specified area. These are generally not confined to State boundaries.
Community Development Employment Projects (CDEP)	<p>The CDEP programme is administered by the Department of Families, Housing, Community Services and Indigenous Affairs (FaHCSIA) from December 2007 and was previously administered by the Department of Employment and Workplace Relations (DEWR). CDEP provides unemployed Indigenous people with activities designed to meet community needs and which develop participants' skills and improve their employability in order to assist them to move to employment outside the CDEP organisation. These activities can also lead to the development of business enterprises.</p> <p>The CDEP Participant Supplement (CPS) is payable to eligible CDEP participants. It can be paid fortnightly or as a 12 weekly payment.</p>
Customer Service Centre	A Customer Service Centre set within a particular region that provides FaHCSIA, DEEWR and other payments and related information and services to recipients. Customer Service Centres are managed by Area Support Offices.
Did not receive a payment	Persons who did not receive a payment due to their own income and/or that of their partner, or parents, where applicable. This group is often referred to as 'zero paid'.
Eligibility and payment status	Refer to the Methodology entry in the Explanatory Notes.
Fortnightly earnings	Amount of income earned, derived, or received by a person for the person's own use or benefit in the previous fortnight.
Incapacitated	A person on Newstart Allowance or Youth Allowance (other) who has an activity test status indicating they are temporarily ill or incapacitated. Refer to the entry for Sickness Allowance in the Explanatory Notes.
Job seekers	A person on Newstart Allowance or Youth Allowance (other) who would usually be engaged in jobsearch. See Explanatory Notes for definition and history.

Job Search Allowance (JSA)	Up to 20 September 1996, Job Search Allowance was payable to CES eligible persons who had been registered as unemployed with the CES for up to 12 months. From 20 September 1996, the payment was combined with Newstart Allowance to form one payment called Newstart Allowance. See Explanatory Notes for history.
Long-term recipients	Persons on Newstart Allowance or Youth Allowance who have been receiving income support for 12 months or more. Duration of long-term recipients can be reset to zero if they exited from payments for more than 13 weeks.
Mature Age Allowance (MAA)	From 20 September 2003, Mature Age Allowance was closed to new claimants. People on Mature Age Allowance before this date can remain on the allowance while they remain 'current', that is retain eligibility and entitlement for the allowance. Mature Age Allowance, a non-activity-tested payment, is payable to unemployed people aged 60 years and over (but below Age Pension age) with little or no recent workforce experience who meet certain requirements for previous receipt of income support. See Explanatory Notes for history.
Newstart Allowance (NSA)	Newstart Allowance is payable to eligible unemployed persons aged 21 years and over (but below Age Pension age) who satisfy the activity test. See Explanatory Notes for history.
Newstart Common Platform System (NCP)	The Newstart Common Platform System (NCP) was introduced in May 1998. The NCP administers all labour market and related payments. This includes primary payments such as Newstart Allowance, Youth Allowance, Mature Age Allowance, Widow Allowance and Partner Allowance. Other payments on the NCP include Special Benefit, Sickness Allowance, Exceptional Circumstances Relief, Farm Help and Austudy.
Partner Allowance (PA)	<p>From 20 September 2003, Partner Allowance was closed to new claimants. People on Partner Allowance before this date can remain on the allowance while they remain 'current', that is retain eligibility and entitlement for the allowance.</p> <p>Partner Allowance, a non-activity-tested payment, is payable to persons who are dependent partners of pensioners and allowees and who were born before 1 July 1955, have no dependent children and have little or no recent workforce experience. See Explanatory Notes for history.</p>
Short-term recipients	Persons on Newstart Allowance or Youth Allowance who have been receiving income support for less than 12 months. Duration of short-term recipients can be reset to zero if they exited from payments for more than 6 weeks.
States	States and Territories of Australia derived from the postcode of the recipient's residence as held on the Centrelink payment system.

Widow Allowance (WA)	<p>From 1 July 2005 Widow Allowance was closed to new claimants, unless the woman was born on or before 1 July 1955.</p> <p>Widow Allowance, a non-activity tested payment, is payable to females aged 50 years or over who have become widowed, divorced or separated since turning 40 years if they have little or no recent work experience and meet a number of other criteria relating to current marital status. See Explanatory Notes for history.</p>
Youth Training Allowance (YTA)	<p>From 1 January 1995 eligible persons aged under 18 years who were registered as unemployed with the CES were paid Youth Training Allowance. From 1 July 1998, Youth Training Allowance was replaced by Youth Allowance. See Explanatory Notes for history.</p>
Youth Allowance (YA)	<p>Youth Allowance is payable to eligible full-time students aged 16 to 25 years, and to eligible unemployed persons aged 16 to 20 years who satisfy the activity test. Note, there are certain exceptions for some 15 and 25 year olds. See Explanatory Notes for history.</p> <p>Youth Allowees may be undertaking full-time study, full-time job search or a combination of approved activities. Some young people will be exempt from the activity test because of their personal circumstances, eg. illness, homelessness or major personal crisis. See the Explanatory Notes for more information.</p>
Youth Allowance (other)	<p>Youth Allowance recipients who are not full-time students or full-time Australian Apprentices.</p>
Zero paid	<p>See 'Did not receive a payment'.</p>

APPENDIX

COMPARISONS BETWEEN DEEWR UNEMPLOYMENT LABOUR MARKET PAYMENT NUMBERS AND ABS LABOUR FORCE UNEMPLOYMENT STATISTICS

Official statistics	Official unemployment statistics are released by the Australian Bureau of Statistics (ABS). The ABS uses definitions recommended by the International Labour Office which have been accepted internationally as the most appropriate for the compilation of official statistics of unemployment.
ABS definition	The ABS unemployment statistics measure the number of persons who, for a particular reference period, did not undertake any paid work, were actively looking for work and were available to start work.
DEEWR Unemployment Labour Market Payment Statistics	The labour market payment statistics give the number of persons who are both eligible and entitled to receive Newstart Allowance or Youth Allowance (other). The criteria for receipt of these payments do not match those the ABS uses to determine whether a person is classed as unemployed or employed for statistical purposes.
Differences	Care should be taken when comparing the ABS labour force and DEEWR labour market payment data. There are a number of reasons why the two series cannot be directly compared.
<i>Duration</i>	<p>Both DEEWR and the ABS classify long-term duration as over 12 months, but use substantially different definitions of duration:</p> <p>DEEWR measures duration of income support. This includes not just time on unemployment benefits but time on any income support payment.</p> <p>The ABS measures length of time unemployed using their unemployment definition.</p> <p>DEEWR unemployed recipients can have breaks without payment for up to 25 weeks but still be classified as long-term income support recipients:</p> <ul style="list-style-type: none">• Recipients who do not receive a payment due to their earnings can have up to 12 weeks without a payment before they are automatically cancelled. This reduces disincentives to accept short-term work.• Long-term recipients can have another 13 weeks off payment after payment is cancelled and still keep their long-term status if they return to income support. This means they keep access to assistance such as the Employment Entry Payment and the higher payment rate for recipients over 60.

For the ABS statistics, any hours of work for a period as short as two weeks count as a break from unemployment and so are enough to reset a person's unemployment duration.

The difference between these two concepts, together with the fact that DEEWR recipients are able to have ongoing part-time work (see 'employment' below) mean that many unemployed recipients remain classified by DEEWR as long-term recipients when they would be classified as short-term unemployed under the ABS definition.

Seasonal adjustment The ABS produces a seasonally adjusted series. The DEEWR labour market payment numbers data are not seasonally adjusted.

Classification The ABS classifies a person as unemployed if he or she is aged 15 years and over, was not employed during the week before the interview, has actively looked for full-time or part-time work and is available to start work. From February 2004, people who had not actively looked for work because they were waiting to start a job within four weeks are also classified as unemployed.

The Newstart Allowance and Youth Allowance (other) series generally count people who are eligible for and entitled to receive a payment between the ages of 15 years and 64 years in the case of men and 15 to 63 years in the case of women.

Employment Newstart Allowance and Youth Allowance (other) recipients may be employed part-time, but within an income test limit; the ABS classifies a person as "employed" if, among other things, he or she has worked for one hour or more during the survey period.

Timing The timing of collections of the series are different:

- DEEWR reports monthly average numbers of people both eligible for and entitled to receive Newstart Allowance and Youth Allowance (other). These monthly averages are calculated using figures collected for each Friday throughout the reference month.
- ABS numbers are based on a sample interview survey of occupants of selected dwellings covering around 0.5% of the total Australian population. These persons are interviewed during the two weeks beginning the Monday between the 6th and 12th of each month and the information obtained is based on the week before the interview takes place.

Treatment of partners The ABS series includes unemployed persons whose spouse is working, irrespective of income, whereas Newstart Allowance and Youth Allowance (other) recipients are subject to an income and assets test for themselves and their spouse.

Pensioners The ABS series includes persons being paid a pension but looking for work (eg. sole parents in receipt of Parenting Payments looking for work).

<i>Non job seekers</i>	The overall Newstart Allowance and Youth Allowance (other) series includes persons who are not required to undertake jobsearch. These persons are separately identified in Tables 2 and 3, and have then been excluded in subsequent tables. These people may be undertaking training, the development of self-employment opportunities, full-time voluntary work or a combination of voluntary and part-time work which excludes them from jobsearch obligations. They may also be incapacitated or have another temporary exemption from jobsearch.
<i>Waiting periods</i>	The ABS series includes persons who are serving a waiting period before being granted Newstart Allowance or Youth Allowance (other), or whose allowance was deferred.
<i>Survey</i>	The ABS figures are derived from a Labour Force Survey which is a sample survey, whereas the DEEWR statistics are a complete count of those both eligible for and entitled to receive Newstart Allowance and Youth Allowance (other).

FOR MORE INFORMATION

Labour market information

Other statistics on recipients of labour market related payments are available on request.

In addition to Newstart and Youth Allowances, statistics are also available on Partner Allowance, Mature Age Allowance and Widow Allowance.

For publication distribution enquiries email:
MI.WORKINGAGE.PAYMENTS@centrelink.gov.au

Written correspondence concerning this publication or statistics on labour market related payments should be addressed to:

Director
Income Support Information Section
Department of Education, Employment and Workplace Relations
PO Box 9879
Canberra Mail Centre ACT 2601

or forwarded via facsimile to (02) 6275 3328.

Other recipient information

Statistics relating to other recipients are also available, including recipient numbers and characteristics for the various FaHCSIA pensions, benefits and family payments.

Other statistical outputs

The following statistical outputs are available on request:

Department of Families, Housing, Community Services and Indigenous Affairs (FaHCSIA)
Income Support Customers: a Statistical Overview
1996, 1997, 1998, 1999, 2000, 2001, 2002, 2003 and 2004.