



AUSTRALIAN REGIONAL LABOUR MARKETS

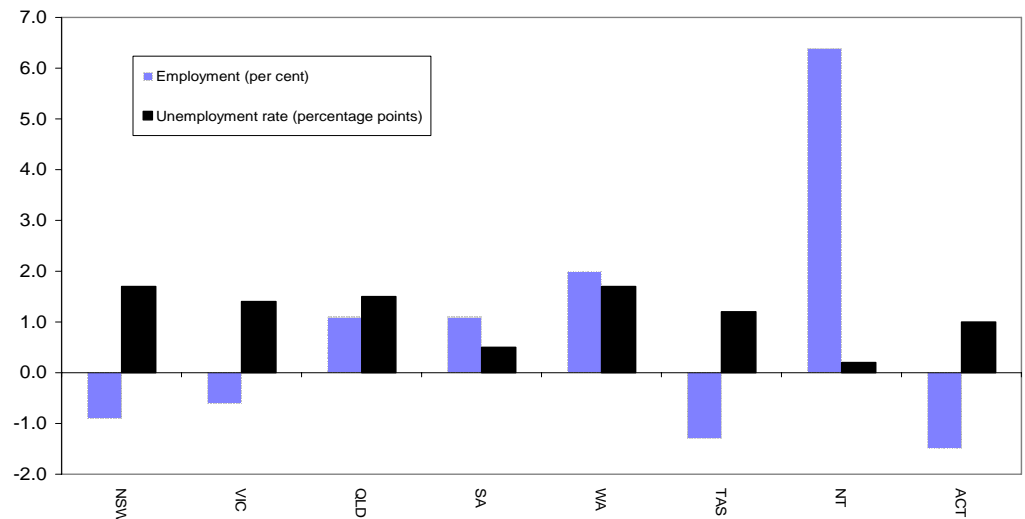
JUNE QUARTER 2009

State/Territory labour market developments

MAIN FINDINGS

Employment increased in half of all States and Territories over the year to the June quarter 2009. The largest increase in employment (in percentage terms) was recorded in the Northern Territory (up by 6.4 per cent), followed by Western Australia (up by 2.0 per cent). The largest falls in employment were recorded in the Australian Capital Territory (down by 1.5 per cent), followed by Tasmania (down by 1.3 per cent). Against the background of slowing labour market activity, the unemployment rate rose in all States and Territories, with the largest increases recorded in New South Wales (up by 1.7 percentage points to 6.3 per cent), Western Australia (up by 1.7 percentage points to 5.1 per cent), and Queensland (up by 1.5 percentage points to 5.3 per cent).

CHANGE IN EMPLOYMENT AND THE UNEMPLOYMENT RATE JUNE QUARTER 2008 TO JUNE QUARTER 2009



Developments at the ABS Labour Force Region Level

While employment increased in 51.3 per cent of regions over the year to the June quarter 2009, 87.5 per cent of regions still recorded an increase in their unemployment rate over the period. Regions recording a significant increase in their unemployment rate over the year to the June quarter 2009 included:

- Fairfield-Liverpool and Outer South Western Sydney, up by 4.0 percentage points to 9.9 per cent; and
- Far North Queensland, up by 3.7 percentage points to 9.4 per cent.

On the other hand, the unemployment rate fell in Central Perth (by 1.3 percentage points to 2.9 per cent) and Southern and Eastern South Australia (by 1.1 percentage points to 3.9 per cent) over the period.

LABOUR FORCE STATUS BY ABS LABOUR FORCE REGION
JUNE QUARTER 2009
Not Seasonally Adjusted

State/Region	Employed		Unemployed		Unemployment rate		Employment rate (a)		Participation rate	
	'000	Annual change (%)	'000	Annual change (%)	%	Annual change (% pts)	%	Annual change (% pts)	%	Annual change (% pts)
New South Wales	3401.2	-0.9	229.8	37.9	6.3	1.7	70.4	-1.6	63.8	-0.3
<i>Sydney</i>	2230.8	-1.0	151.8	57.7	6.4	2.3	71.4	-2.0	66.4	0.0
Inner Sydney and Inner Western Sydney	310.7	-4.4	25.5	155.3	7.6	4.6	73.8	-3.1	70.8	-1.6
Inner Sydney	218.2	-3.1	19.3	173.0	8.1	5.1	74.9	-3.3	74.5	-0.4
Inner Western Sydney	92.5	-7.4	6.2	112.4	6.3	3.4	71.4	-2.8	63.2	-3.9
Eastern Suburbs	139.7	1.4	5.8	55.1	4.0	1.4	73.8	-4.4	68.5	1.3
St George-Sutherland	238.6	1.2	8.9	3.5	3.6	0.1	77.6	1.2	67.2	0.2
Canterbury-Bankstown	133.5	-2.6	12.0	27.3	8.3	1.8	64.0	-1.4	57.8	-0.8
Fairfield-Liverpool/ Outer South Western Sydney	275.3	-0.9	30.3	74.4	9.9	4.0	64.5	-3.3	64.5	1.4
Fairfield-Liverpool	155.9	0.3	18.8	81.0	10.7	4.5	60.6	-3.2	61.4	2.4
Outer South Western Sydney	119.4	-2.4	11.5	64.5	8.8	3.4	70.3	-3.6	69.1	-0.2
Central Western Sydney	155.1	2.7	12.2	66.2	7.3	2.6	65.9	-0.2	62.7	2.3
North Western Sydney	306.6	1.8	24.5	17.5	7.4	0.9	71.0	-0.1	69.9	1.1
Lower Northern Sydney	181.2	4.5	6.5	23.8	3.5	0.5	79.8	3.9	71.2	2.6
Central Northern Sydney	229.1	-1.4	9.6	68.5	4.0	1.6	73.2	-4.0	67.5	-0.8
Northern Beaches	130.3	-7.0	7.3	172.5	5.3	3.4	77.4	-5.8	70.8	-3.1
Gosford-Wyong	130.8	-8.2	9.3	74.5	6.6	3.0	66.7	-6.7	55.5	-3.8
<i>Balance of New South Wales</i>	1170.4	-0.6	78.1	10.8	6.3	0.6	68.6	-0.9	59.3	-0.9
Hunter	290.0	-2.2	18.3	12.2	5.9	0.7	67.7	-3.9	59.5	-1.9
Newcastle	239.3	-4.9	14.7	9.0	5.8	0.7	66.5	-5.4	58.4	-3.5
Illawarra and South Eastern	296.8	1.4	23.2	36.1	7.3	1.8	69.1	-0.1	61.3	1.0
Illawarra	181.2	-3.4	15.5	6.8	7.9	0.7	66.2	-1.0	56.7	-2.4
Wollongong	123.4	-7.5	11.4	33.5	8.4	2.4	66.4	-4.5	58.3	-3.9
South Eastern	115.6	10.0	7.7	202.6	6.3	3.9	74.4	1.2	70.2	7.6
Richmond-Tweed/ Mid-North Coast	217.9	0.6	13.4	-27.2	5.8	-2.0	63.5	0.6	51.5	-1.9
Northern/ Far West-North Western/ Central West	233.7	-3.8	16.1	28.0	6.4	1.5	70.6	-1.4	62.9	-1.8
Murray-Murrumbidgee	132.0	2.0	7.0	15.0	5.1	0.5	75.4	2.0	64.1	1.0
Victoria	2649.8	-0.6	167.5	32.2	5.9	1.4	71.0	-1.8	64.5	-0.6
<i>Melbourne</i>	1984.4	-0.4	129.4	37.1	6.1	1.6	71.3	-1.7	65.6	-0.4
Outer Western Melbourne	329.1	-3.3	28.3	55.4	7.9	2.8	69.6	-4.3	65.1	-2.0
North Western Melbourne	142.1	-1.1	10.3	9.6	6.7	0.6	68.1	-0.2	60.6	-1.6
Inner Melbourne	206.5	3.6	13.1	115.1	6.0	3.0	75.9	-1.0	75.7	2.4
North Eastern Melbourne	231.4	0.0	12.4	26.9	5.1	1.0	71.4	-1.8	65.0	-0.3
Inner Eastern Melbourne	307.4	1.5	16.5	49.4	5.1	1.6	72.2	0.7	63.7	1.4
Southern Melbourne	217.8	-0.2	14.6	41.5	6.3	1.8	71.8	-3.9	66.9	0.3
Outer Eastern Melbourne	209.7	-3.8	13.0	81.9	5.8	2.7	73.1	-3.3	67.7	-1.5
South Eastern Melbourne	210.5	0.9	16.2	-1.0	7.2	-0.1	67.1	-0.6	64.8	-1.5
Mornington Peninsula	129.8	0.3	5.0	-17.2	3.7	-0.7	74.1	0.5	60.9	-1.5
<i>Balance of Victoria</i>	665.4	-1.4	38.1	17.9	5.4	0.8	70.3	-1.9	61.4	-1.2
Barwon-Western District	191.9	0.0	13.2	77.8	6.4	2.7	72.2	-0.3	65.9	0.9
Central Highlands-Wimmera	99.6	4.4	5.4	32.0	5.1	1.0	70.9	2.5	64.0	2.6
Loddon-Mallee	128.0	1.0	7.6	10.4	5.6	0.5	68.6	-4.9	61.9	0.1
Goulburn-Ovens-Murray	128.9	-10.4	5.1	-39.9	3.8	-1.8	68.8	-2.3	54.9	-8.4
All Gippsland	117.0	0.0	6.7	26.3	5.5	1.1	70.1	-5.1	59.7	-0.2

(a) The employment rate refers to the proportion of the working age (15-64) population who are employed.

LABOUR FORCE STATUS BY ABS LABOUR FORCE REGION
JUNE QUARTER 2009
Not Seasonally Adjusted

State/Region	Employed		Unemployed		Unemployment rate		Employment Rate (a)		Participation rate	
	'000	Annual change (%)	'000	Annual change (%)	%	Annual change (% pts)	%	Annual change (% pts)	%	Annual change (% pts)
Queensland	2220.3	1.1	124.9	43.5	5.3	1.5	73.6	-1.1	67.5	0.3
<i>Brisbane</i>	<i>1021.7</i>	<i>0.3</i>	<i>52.0</i>	<i>61.4</i>	<i>4.8</i>	<i>1.8</i>	<i>75.1</i>	<i>-1.7</i>	<i>69.5</i>	<i>0.0</i>
Brisbane City Inner Ring	271.3	-3.5	12.5	71.5	4.4	1.9	78.4	-3.4	73.6	-2.7
Brisbane City Outer Ring	309.9	-0.1	15.1	43.6	4.6	1.4	76.0	-0.9	68.5	-0.3
South and East Brisbane Balance	193.8	5.0	11.2	47.6	5.5	1.5	74.7	1.0	70.9	3.1
North Brisbane Balance	171.0	1.3	9.1	177.0	5.1	3.2	70.4	-3.9	64.3	1.2
Ipswich City	75.8	2.0	4.0	15.2	5.1	0.6	72.8	-0.4	68.4	0.2
<i>Balance of Queensland</i>	<i>1198.6</i>	<i>1.8</i>	<i>73.0</i>	<i>32.9</i>	<i>5.7</i>	<i>1.3</i>	<i>72.4</i>	<i>-0.6</i>	<i>65.8</i>	<i>0.5</i>
Gold Coast	289.1	2.6	16.8	26.2	5.5	1.0	72.3	-0.4	65.6	0.3
Sunshine Coast	145.4	-3.3	12.8	79.6	8.1	3.6	66.9	-9.6	60.3	-1.6
West Moreton	35.3	-1.9	1.7	17.7	4.6	0.7	68.9	-0.6	61.3	-2.0
Wide Bay-Burnett	123.6	8.8	10.7	30.9	8.0	1.3	64.7	2.3	58.2	4.1
Darling Downs-South West	134.8	3.6	2.7	-9.1	2.0	-0.3	77.3	1.9	67.0	1.2
Mackay-Fitzroy-Central West	205.6	3.6	10.1	8.1	4.7	0.2	76.5	2.2	69.6	1.0
Northern-North West	136.6	2.2	4.8	8.3	3.4	0.2	79.6	1.9	73.0	0.6
Far North	128.2	-3.7	13.3	65.2	9.4	3.7	70.6	-1.9	69.8	-1.2
South Australia	794.2	1.1	45.3	12.8	5.4	0.5	72.2	0.4	63.4	0.4
<i>Adelaide</i>	<i>577.9</i>	<i>0.3</i>	<i>36.4</i>	<i>26.8</i>	<i>5.9</i>	<i>1.2</i>	<i>71.2</i>	<i>-0.6</i>	<i>63.1</i>	<i>0.3</i>
Northern Adelaide	177.9	-2.8	14.0	36.9	7.3	2.0	67.6	-3.1	63.3	-1.3
Western Adelaide	101.0	3.7	9.0	113.3	8.1	4.0	69.0	2.0	60.4	4.3
Eastern Adelaide	118.8	-1.8	7.0	43.3	5.5	1.7	71.1	-2.6	61.5	-0.8
Southern Adelaide	180.2	3.1	6.5	-31.3	3.5	-1.6	76.7	1.9	65.8	0.2
<i>Balance of South Australia</i>	<i>216.3</i>	<i>3.5</i>	<i>8.9</i>	<i>-22.4</i>	<i>3.9</i>	<i>-1.2</i>	<i>75.0</i>	<i>3.2</i>	<i>64.4</i>	<i>0.5</i>
Northern and Western SA	74.9	5.5	3.2	-25.6	4.1	-1.6	72.7	6.4	60.3	1.8
Southern and Eastern SA	141.4	2.5	5.7	-20.5	3.9	-1.1	76.3	1.4	66.7	-0.2
Western Australia	1163.2	2.0	62.2	57.8	5.1	1.7	74.9	-0.8	69.0	0.7
<i>Perth</i>	<i>872.9</i>	<i>1.7</i>	<i>45.6</i>	<i>68.4</i>	<i>5.0</i>	<i>1.9</i>	<i>75.2</i>	<i>-1.3</i>	<i>69.4</i>	<i>0.6</i>
Central Metropolitan	75.1	1.2	2.2	-31.5	2.9	-1.3	74.7	0.2	63.5	-1.9
East Metropolitan	153.5	7.4	5.7	28.9	3.6	0.6	77.4	4.2	71.8	3.6
North Metropolitan	267.2	-0.4	14.7	127.0	5.2	2.9	75.7	-2.6	70.3	-0.2
South West Metropolitan	179.1	1.3	10.1	38.1	5.4	1.4	73.7	-3.0	68.3	-0.1
South East Metropolitan	198.1	1.2	12.8	130.4	6.1	3.3	74.2	-2.7	69.7	1.4
<i>Balance of Western Australia</i>	<i>290.2</i>	<i>2.7</i>	<i>16.6</i>	<i>34.5</i>	<i>5.4</i>	<i>1.2</i>	<i>74.1</i>	<i>0.8</i>	<i>68.0</i>	<i>1.0</i>
Lower Western WA	168.0	7.8	10.4	34.4	5.8	1.1	76.1	2.3	70.0	3.8
Remainder-Balance WA	122.3	-3.5	6.2	34.6	4.8	1.3	71.6	-1.1	65.4	-2.6
Tasmania	234.8	-1.3	12.0	32.8	4.9	1.2	69.9	-1.3	60.9	-0.7
Greater Hobart-Southern	118.0	-2.3	6.0	52.2	4.8	1.7	70.0	-2.4	61.6	-1.1
<i>Greater Hobart</i>	<i>101.5</i>	<i>-3.0</i>	<i>5.1</i>	<i>43.5</i>	<i>4.7</i>	<i>1.5</i>	<i>70.9</i>	<i>-2.6</i>	<i>62.2</i>	<i>-1.6</i>
Northern	68.0	1.9	3.0	16.1	4.3	0.5	72.7	2.0	62.1	0.8
Mersey-Lyell	48.8	-3.2	3.0	19.9	5.8	1.1	66.0	-3.2	57.9	-1.8
Northern Territory	121.2	6.4	5.1	12.9	4.0	0.2	77.1	2.9	76.2	3.0
Australian Capital Territory	193.9	-1.5	7.1	37.1	3.5	1.0	78.3	-1.8	72.1	-1.3
AUSTRALIA	10 778.5	0.1	653.9	36.6	5.7	1.5	72.0	-1.3	65.4	-0.1
<i>Metropolitan Australia (b)</i>	<i>6789.2</i>	<i>-0.2</i>	<i>420.2</i>	<i>49.0</i>	<i>5.8</i>	<i>1.8</i>	<i>72.4</i>	<i>-1.7</i>	<i>66.6</i>	<i>0.0</i>
<i>Non-metropolitan Australia (b)</i>	<i>3989.3</i>	<i>0.6</i>	<i>233.8</i>	<i>18.9</i>	<i>5.5</i>	<i>0.8</i>	<i>71.4</i>	<i>-0.6</i>	<i>63.4</i>	<i>-0.2</i>

(a) The employment rate refers to the proportion of the working age (15-64) population who are employed.

(b) The ABS defines metropolitan as those regions located within the State capital cities. Non-metropolitan is defined as those regions located outside the State capital cities as well as the two Territories.

EXPLANATORY NOTES

Introduction

The regional labour market estimates presented in this brochure are three-month averages derived from the Australian Bureau of Statistics (ABS) Monthly Labour Force Survey. These estimates are not adjusted to take account of seasonal and other variations and can exhibit irregular movements. They should therefore be used with caution.

Related information

Users may wish to refer to the DEEWR *Small Area Labour Markets, Australia* publication, which is available, free of charge, at <http://www.workplace.gov.au> (in PDF format), or as a printed booklet upon request. This publication contains quarterly estimates of unemployment rates and levels for approximately 1350 Statistical Local Areas.

Next issue

The next issue of *Australian Regional Labour Markets*, for the September quarter 2009, is expected to be released in late October 2009.

Contact details

This brochure was prepared by the Economic, Labour Market and Education Analysis Branch, Department of Education, Employment and Workplace Relations, Canberra. For further information on this brochure or related statistics, contact Kellie Gavin in the Labour Market Analysis Section on (02) 6121 3538 or email Kellie.Gavin@deewr.gov.au.

More detailed monthly national, State and regional labour force statistics are available from the ABS. For further information on ABS labour force statistics, go to the 'Labour' theme page at the ABS website (www.abs.gov.au), or contact the ABS Labour Force Survey area on (02) 6252 6525.