



AUSTRALIAN REGIONAL LABOUR MARKETS

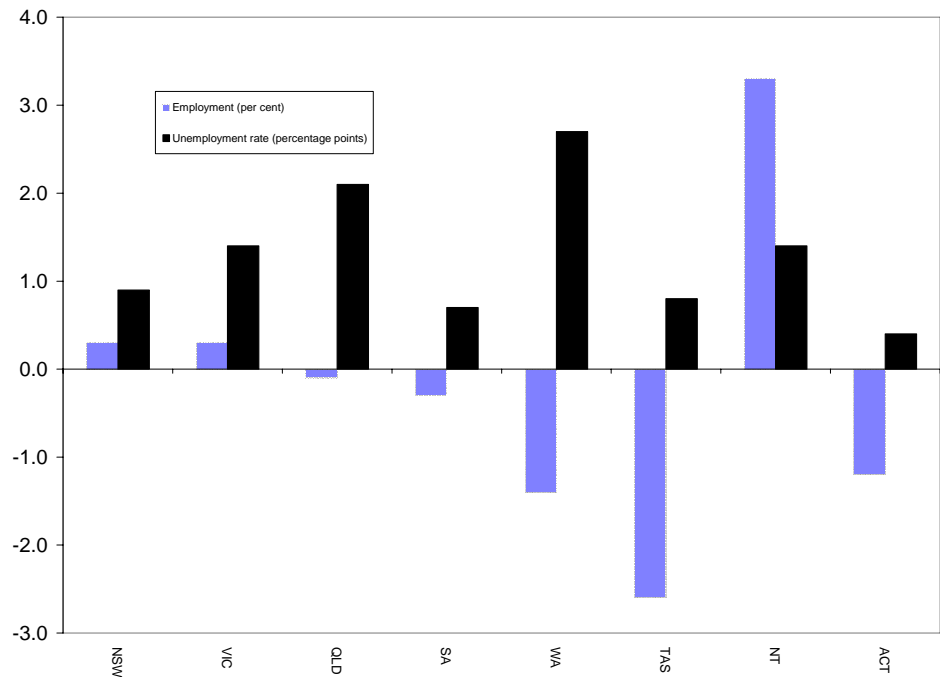
SEPTEMBER QUARTER 2009

State/Territory labour market developments

MAIN FINDINGS

Employment fell in the majority of States and Territories over the year to the September quarter 2009. The largest falls in employment (in percentage terms) were recorded in Tasmania (down by 2.6 per cent), Western Australia (down 1.4 per cent) and the Australian Capital Territory (down by 1.2 per cent). The largest increase in employment was recorded in the Northern Territory (up by 3.3 per cent) while modest increases were recorded in New South Wales and Victoria (both up by 0.3 per cent). Against the background of slowing labour market activity, the unemployment rate rose in all States and Territories, with the largest increases recorded in Western Australia (up by 2.7 percentage points to 5.5 per cent) and Queensland (up by 2.1 percentage points to 5.5 per cent).

CHANGE IN EMPLOYMENT AND THE UNEMPLOYMENT RATE SEPTEMBER QUARTER 2008 TO SEPTEMBER QUARTER 2009



Developments at the ABS Labour Force Region Level

Employment decreased in 60.0 per cent of regions over the year to the September quarter 2009. Reflecting this, 85.0 per cent of regions recorded an increase in their unemployment rate over the period. Regions recording a significant increase in their unemployment rate over the year to the September quarter 2009 included:

- Far North Queensland, up by 7.3 percentage points to 12.3 per cent; and
- South Eastern Melbourne, up by 4.7 percentage points to 8.7 per cent.

On the other hand, the unemployment rate fell in Murray-Murrumbidgee (down by 0.5 percentage points to 3.7 per cent) and Lower Northern Sydney (down by 0.5 percentage points to 2.6 per cent) over the period.

LABOUR FORCE STATUS BY ABS LABOUR FORCE REGION
SEPTEMBER QUARTER 2009
Not Seasonally Adjusted

State/Region	Employed		Unemployed		Unemployment rate		Employment rate (a)		Participation rate	
	'000	Annual change (%)	'000	Annual change (%)	%	Annual change (% pts)	%	Annual change (% pts)	%	Annual change (% pts)
New South Wales	3413.0	0.3	200.8	21.5	5.6	0.9	70.4	-0.9	63.3	-0.1
<i>Sydney</i>	2239.3	0.7	139.8	34.8	5.9	1.4	71.4	-0.9	66.1	0.5
Inner Sydney and Inner Western Sydney	317.6	-0.7	20.2	144.1	6.0	3.5	74.6	-1.7	70.6	0.2
Inner Sydney	224.7	-0.1	14.5	163.6	6.1	3.7	76.9	-0.2	74.5	0.6
Inner Western Sydney	92.9	-2.2	5.7	105.6	5.8	3.0	69.4	-5.0	62.8	-0.7
Eastern Suburbs	144.4	7.1	6.1	29.5	4.1	0.7	74.6	-0.6	70.7	4.5
St George-Sutherland	242.5	6.8	9.9	14.7	3.9	0.3	77.3	3.7	68.3	3.9
Canterbury-Bankstown	132.4	-2.6	10.4	18.8	7.3	1.2	62.7	-1.3	56.7	-1.2
Fairfield-Liverpool/ Outer South Western Sydney	270.1	-4.4	27.3	27.9	9.2	2.2	64.1	-2.7	62.5	-2.2
Fairfield-Liverpool	153.6	-6.3	16.1	25.4	9.5	2.2	60.4	-4.2	59.4	-3.3
Outer South Western Sydney	116.5	-1.7	11.2	31.7	8.8	2.1	69.7	-0.5	67.2	-0.7
Central Western Sydney	148.5	-3.2	13.5	35.2	8.3	2.2	63.6	-3.3	60.4	-1.7
North Western Sydney	307.8	3.7	21.3	18.5	6.5	0.8	71.6	1.2	69.3	2.1
Lower Northern Sydney	181.9	4.2	4.9	-14.2	2.6	-0.5	79.6	2.3	70.7	1.6
Central Northern Sydney	230.9	0.3	10.6	56.9	4.4	1.5	73.6	-4.5	68.0	0.2
Northern Beaches	131.2	-1.3	7.2	182.6	5.2	3.3	78.4	-2.7	71.1	1.0
Gosford-Wyong	131.9	-2.6	8.6	-6.9	6.1	-0.3	66.6	-2.1	55.4	-2.5
<i>Balance of New South Wales</i>	1173.7	-0.4	61.0	-0.8	4.9	0.0	68.4	-0.9	58.5	-1.1
Hunter	295.1	0.6	14.7	15.8	4.7	0.6	68.4	-2.9	59.5	-0.3
Newcastle	244.0	-1.2	11.8	17.4	4.6	0.7	67.6	-3.6	58.6	-1.3
Illawarra and South Eastern	295.0	-0.9	17.3	28.7	5.5	1.2	68.9	-0.5	59.5	-0.8
Illawarra	177.3	-7.7	11.1	7.2	5.9	0.8	65.3	-3.0	54.1	-4.9
Wollongong	118.1	-11.8	9.2	16.9	7.2	1.7	63.7	-7.7	54.9	-7.1
South Eastern	117.8	11.4	6.2	100.6	5.0	2.2	75.1	3.4	70.2	7.3
Richmond-Tweed/ Mid-North Coast	210.7	-1.9	11.4	-34.3	5.2	-2.3	62.3	-0.7	49.2	-3.3
Northern/ Far West-North Western/ Central West	241.0	-1.6	12.5	1.1	4.9	0.1	70.5	-2.4	63.8	-1.4
Murray-Murrumbidgee	131.8	3.4	5.0	-9.9	3.7	-0.5	75.3	4.7	62.9	1.0
Victoria	2669.4	0.3	160.7	35.4	5.7	1.4	71.1	-1.3	64.5	-0.1
<i>Melbourne</i>	2008.3	0.5	121.4	42.9	5.7	1.6	71.7	-1.3	65.8	0.1
Outer Western Melbourne	338.0	0.9	24.1	25.8	6.7	1.2	69.9	-1.6	65.5	-0.4
North Western Melbourne	142.5	2.6	11.9	85.2	7.7	3.3	67.5	-2.6	61.1	2.3
Inner Melbourne	212.2	5.2	11.3	59.7	5.1	1.7	76.2	-1.1	76.3	2.5
North Eastern Melbourne	237.1	2.8	10.0	-0.4	4.0	-0.1	72.6	-1.2	65.6	0.7
Inner Eastern Melbourne	308.2	0.0	16.4	46.9	5.1	1.6	73.1	0.8	63.7	0.4
Southern Melbourne	219.3	-0.1	10.4	13.3	4.5	0.5	73.6	-1.1	65.9	-0.5
Outer Eastern Melbourne	210.4	-0.9	10.1	38.7	4.6	1.3	73.5	-2.2	66.8	-0.6
South Eastern Melbourne	215.5	-0.8	20.4	130.0	8.7	4.7	67.6	-1.2	66.9	0.7
Mornington Peninsula	125.1	-7.2	6.8	17.4	5.1	1.0	71.6	-3.3	59.3	-5.2
<i>Balance of Victoria</i>	661.1	-0.4	39.3	16.5	5.6	0.8	69.2	-1.2	60.9	-0.7
Barwon-Western District	187.7	-1.5	11.7	60.5	5.9	2.2	70.9	-1.1	63.8	-0.5
Central Highlands-Wimmera	104.6	19.1	6.2	-21.0	5.6	-2.6	73.8	10.1	67.3	8.4
Loddon-Mallee	120.7	-5.3	7.3	-5.9	5.7	0.0	65.1	-5.7	58.2	-4.1
Goulburn-Ovens-Murray	130.8	-4.6	8.8	40.5	6.3	1.9	67.3	-2.9	57.0	-2.4
All Gippsland	117.3	-3.0	5.2	15.8	4.3	0.7	69.4	-4.2	58.9	-2.3

(a) The employment rate refers to the proportion of the working age (15-64) population who are employed.

LABOUR FORCE STATUS BY ABS LABOUR FORCE REGION
SEPTEMBER QUARTER 2009
Not Seasonally Adjusted

State/Region	Employed		Unemployed		Unemployment rate		Employment Rate (a)		Participation rate	
	'000	Annual change (%)	'000	Annual change (%)	%	Annual change (% pts)	%	Annual change (% pts)	%	Annual change (% pts)
Queensland	2227.7	-0.1	130.0	66.2	5.5	2.1	73.5	-1.8	67.4	-0.1
<i>Brisbane</i>	1031.7	0.9	53.7	67.8	5.0	1.9	75.3	-1.0	69.9	0.5
Brisbane City Inner Ring	272.9	-2.5	12.3	65.9	4.3	1.7	78.0	-3.2	73.6	-2.1
Brisbane City Outer Ring	310.0	1.0	14.8	102.8	4.5	2.2	76.3	-0.3	68.2	1.1
South and East Brisbane Balance	198.0	-1.9	12.8	41.4	6.1	1.8	75.5	-1.2	72.6	-1.6
North Brisbane Balance	173.9	7.5	9.1	92.3	5.0	2.1	70.3	-1.2	64.9	4.2
Ipswich City	76.8	6.5	4.9	35.1	5.9	1.2	73.7	4.8	69.5	3.5
<i>Balance of Queensland</i>	1196.0	-0.9	76.2	65.0	6.0	2.3	72.0	-2.4	65.5	-0.6
Gold Coast	285.0	1.0	18.1	30.7	6.0	1.3	71.2	-1.0	64.5	-0.6
Sunshine Coast	149.4	-3.4	10.5	99.5	6.6	3.3	69.6	-9.7	60.4	-2.0
West Moreton	33.1	-15.9	1.0	-28.8	2.9	-0.5	69.6	-2.5	56.3	-12.4
Wide Bay-Burnett	123.1	1.2	9.5	43.3	7.2	2.0	64.5	-2.1	57.1	0.4
Darling Downs-South West	134.9	1.5	3.7	75.8	2.7	1.1	75.6	-2.3	67.3	0.8
Mackay-Fitzroy-Central West	207.7	4.0	10.4	45.8	4.8	1.3	76.4	2.1	70.0	2.1
Northern-North West	135.3	-4.0	5.2	84.4	3.7	1.7	78.8	-2.7	72.3	-2.9
Far North	127.6	-5.4	17.9	154.1	12.3	7.3	68.4	-4.2	71.3	0.3
South Australia	790.3	-0.3	45.3	16.2	5.4	0.7	71.4	-0.7	63.0	-0.4
<i>Adelaide</i>	579.8	0.9	35.0	18.6	5.7	0.8	71.0	-0.3	63.0	0.4
Northern Adelaide	177.0	-2.5	14.8	30.4	7.7	1.8	66.8	-3.1	63.1	-1.2
Western Adelaide	102.9	6.0	6.8	13.0	6.2	0.4	69.4	0.8	60.2	3.3
Eastern Adelaide	124.0	5.2	5.3	41.9	4.1	1.0	73.4	1.9	63.0	3.0
Southern Adelaide	175.9	-1.3	8.0	-4.0	4.4	-0.1	75.1	0.6	64.7	-1.6
<i>Balance of South Australia</i>	210.5	-3.3	10.3	8.5	4.7	0.5	72.4	-1.6	62.9	-2.7
Northern and Western SA	76.9	3.3	2.5	-47.7	3.1	-2.9	75.4	8.0	61.3	-0.3
Southern and Eastern SA	133.5	-6.7	7.8	65.4	5.5	2.3	70.8	-7.1	63.8	-4.2
Western Australia	1153.0	-1.4	66.8	98.3	5.5	2.7	73.5	-3.5	68.2	-1.0
<i>Perth</i>	864.5	-2.4	50.4	111.6	5.5	2.9	73.8	-4.6	68.6	-1.6
Central Metropolitan	73.2	-1.5	3.8	52.7	4.9	1.7	72.4	-1.7	62.8	-1.7
East Metropolitan	149.6	-0.3	7.7	116.1	4.9	2.6	75.9	-1.0	70.5	-0.2
North Metropolitan	269.7	-1.8	14.5	131.8	5.1	2.9	75.3	-4.0	70.4	-1.3
South West Metropolitan	178.7	-3.0	9.2	59.9	4.9	1.9	73.5	-7.1	67.3	-2.8
South East Metropolitan	193.2	-4.5	15.2	164.5	7.3	4.5	71.0	-7.1	68.4	-1.8
<i>Balance of Western Australia</i>	288.5	1.8	16.4	66.0	5.4	2.0	72.9	0.0	67.1	0.8
Lower Western WA	164.8	1.0	8.2	64.2	4.8	1.8	75.2	0.5	67.4	-0.3
Remainder-Balance WA	123.7	2.9	8.1	67.9	6.2	2.3	70.0	-0.7	66.8	2.3
Tasmania	233.4	-2.6	12.0	17.1	4.9	0.8	69.2	-2.1	60.4	-1.8
Greater Hobart-Southern	118.4	-1.1	5.9	31.2	4.8	1.1	69.4	-1.7	61.6	-0.7
<i>Greater Hobart</i>	102.0	-1.3	4.8	27.9	4.5	1.0	70.6	-1.6	62.2	-0.9
Northern	67.2	-2.0	3.1	25.3	4.4	0.9	71.6	-0.9	61.3	-1.4
Mersey-Lyell	47.8	-6.7	3.0	-8.7	5.9	-0.1	65.6	-4.4	56.7	-4.8
Northern Territory	118.1	3.3	4.6	66.4	3.8	1.4	74.5	0.6	73.5	1.6
Australian Capital Territory	194.6	-1.2	6.6	13.4	3.3	0.4	78.1	-2.1	72.0	-1.4
AUSTRALIA	10 799.6	-0.1	626.7	38.1	5.5	1.5	71.7	-1.4	65.1	-0.2
<i>Metropolitan Australia (b)</i>	6825.6	0.2	405.3	45.8	5.6	1.7	72.3	-1.4	66.5	0.1
<i>Non-metropolitan Australia (b)</i>	3974.0	-0.6	221.5	26.0	5.3	1.1	70.7	-1.5	62.7	-0.8

(a) The employment rate refers to the proportion of the working age (15-64) population who are employed.

(b) The ABS defines metropolitan as those regions located within the State capital cities. Non-metropolitan is defined as those regions located outside the State capital cities as well as the two Territories.

EXPLANATORY NOTES

Introduction

The regional labour market estimates presented in this brochure are three-month averages derived from the Australian Bureau of Statistics (ABS) Monthly Labour Force Survey. These estimates are not adjusted to take account of seasonal and other variations and can exhibit irregular movements. They should therefore be used with caution.

Related information

Users may wish to refer to the DEEWR *Small Area Labour Markets, Australia* publication, which is available, free of charge, at <http://www.workplace.gov.au> (in PDF format), or as a printed booklet upon request. This publication contains quarterly estimates of unemployment rates and levels for approximately 1350 Statistical Local Areas.

Next issue

The next issue of *Australian Regional Labour Markets*, for the December quarter 2009, is expected to be released in late January 2010.

Contact details

This brochure was prepared by the Economic, Labour Market and Education Analysis Branch, Department of Education, Employment and Workplace Relations, Canberra. For further information on this brochure or related statistics, contact Kellie Gavin in the Labour Market Analysis Section on (02) 6121 3538 or email Kellie.Gavin@deewr.gov.au.

More detailed monthly national, State and regional labour force statistics are available from the ABS. For further information on ABS labour force statistics, go to the 'Labour' theme page at the ABS website (www.abs.gov.au), or contact the ABS Labour Force Survey area on (02) 6252 6525.