



# AUSTRALIAN REGIONAL LABOUR MARKETS

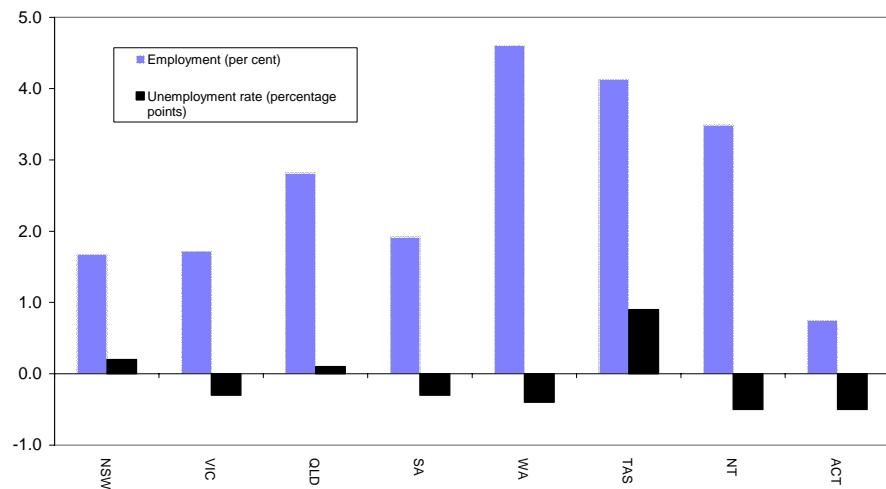
## DECEMBER QUARTER 2005

### MAIN FINDINGS

#### State/Territory labour market developments

Over the year to the December quarter 2005, employment rose in all States and Territories. The largest increase (in percentage terms) was recorded in Western Australia (up by 4.6 per cent), followed by Tasmania (up by 4.1 per cent) and the Northern Territory (up by 3.5 per cent). The unemployment rate fell in the majority of the States and Territories. The largest falls over the year were recorded in the Northern Territory and Australian Capital Territory (both down by 0.5 percentage points).

#### CHANGE IN EMPLOYMENT AND THE UNEMPLOYMENT RATE, DECEMBER QUARTER 2004 TO DECEMBER QUARTER 2005



#### Developments at the ABS Labour Market Region Level

Employment increased in approximately 72 per cent of regions over the year to the December quarter 2005 while 46 per cent of regions recorded a reduction in their unemployment rate. A number of regions have recorded strong employment growth as well as a significant reduction in their unemployment rate over the last 12 months. In particular:

- Central Perth recorded an 8.6 per cent increase in employment while the unemployment rate fell by 1.4 percentage points to 1.5 per cent;
- Northern, Far West-North Western and Central West NSW recorded a 7.3 per cent increase in employment while the unemployment rate fell by 0.1 percentage points to 5.4 per cent; and
- employment in Central Northern Sydney rose by 6.3 per cent while the unemployment rate fell by 0.7 percentage points to 2.6 per cent.

**LABOUR FORCE STATUS BY ABS LABOUR FORCE REGIONS  
DECEMBER QUARTER 2005  
Not Seasonally Adjusted**

State/Region	Employed		Unemployed		Unemployment rate		Employment rate (a)		Participation rate	
	'000	Annual change	'000	Annual change	%	Annual change (% pts)	%	Annual change (% pts)	%	Annual change (% pts)
<b>AUSTRALIA</b>	<b>10069.5</b>	<b>225.3</b>	<b>517.2</b>	<b>4.4</b>	<b>4.9</b>	<b>-0.1</b>	<b>71.9</b>	<b>0.8</b>	<b>64.5</b>	<b>0.6</b>
<i>Metropolitan Australia (b)</i>	<i>6365.0</i>	<i>121.4</i>	<i>301.5</i>	<i>-3.3</i>	<i>4.5</i>	<i>-0.1</i>	<i>72.7</i>	<i>0.6</i>	<i>65.4</i>	<i>0.4</i>
<i>Non-metropolitan Australia (b)</i>	<i>3704.5</i>	<i>104.0</i>	<i>215.8</i>	<i>7.7</i>	<i>5.5</i>	<i>0.0</i>	<i>70.5</i>	<i>1.1</i>	<i>63.0</i>	<i>1.0</i>
<b>New South Wales</b>	<b>3259.3</b>	<b>53.8</b>	<b>177.0</b>	<b>9.2</b>	<b>5.2</b>	<b>0.2</b>	<b>70.3</b>	<b>0.7</b>	<b>62.8</b>	<b>0.6</b>
<i>Sydney</i>	<i>2153.1</i>	<i>27.1</i>	<i>98.1</i>	<i>5.2</i>	<i>4.4</i>	<i>0.2</i>	<i>72.2</i>	<i>0.4</i>	<i>65.1</i>	<i>0.4</i>
Inner Sydney and Inner Western Sydney	269.1	-0.1	11.1	0.5	4.0	0.2	73.1	-2.4	68.2	-0.7
Inner Sydney	185.7	7.8	8.2	-0.1	4.2	-0.2	74.3	-0.9	72.0	1.8
Eastern Suburbs	133.4	-3.0	2.8	0.1	2.1	0.1	76.4	-0.5	64.0	-1.7
St George-Sutherland	232.2	-13.9	8.1	-0.1	3.4	0.1	76.1	-0.7	65.5	-4.3
Canterbury-Bankstown	133.4	5.5	9.1	0.2	6.4	-0.1	63.5	1.1	55.8	1.8
Fairfield-Liverpool/ Outer South Western Sydney	276.4	-1.9	20.2	4.4	6.8	1.4	67.0	-1.7	63.9	-0.1
Fairfield-Liverpool	155.9	-3.1	13.5	2.9	8.0	1.7	62.4	-3.4	60.5	-0.8
Central Western Sydney	139.1	10.8	8.5	2.7	5.8	1.4	65.8	5.3	59.6	5.0
North Western Sydney	293.3	11.5	13.8	0.0	4.5	-0.2	70.8	2.5	66.4	2.0
Lower Northern Sydney	175.6	4.8	5.6	0.3	3.1	0.1	77.0	0.0	70.5	1.4
Central Northern Sydney	232.2	13.7	6.1	-1.2	2.6	-0.7	78.7	2.8	70.2	3.2
Northern Beaches	134.5	5.0	4.1	0.3	3.0	0.1	80.5	-0.9	70.3	2.2
Gosford-Wyong	134.1	-5.3	8.6	-2.0	6.0	-1.0	69.5	0.3	58.1	-3.6
<i>Balance of New South Wales</i>	<i>1106.1</i>	<i>26.7</i>	<i>78.9</i>	<i>4.0</i>	<i>6.7</i>	<i>0.2</i>	<i>66.8</i>	<i>1.1</i>	<i>59.0</i>	<i>1.0</i>
Hunter	276.4	3.6	18.8	0.4	6.4	0.0	68.6	2.4	60.5	0.3
Newcastle	236.5	10.4	14.0	-1.6	5.6	-0.9	69.7	4.1	61.3	1.6
Illawarra and South Eastern	250.7	-12.9	20.6	2.7	7.6	1.2	63.4	-1.5	55.3	-2.4
Illawarra	162.5	-9.4	16.1	2.1	9.0	1.5	62.2	-1.1	54.0	-2.5
Wollongong	114.2	-7.8	12.0	2.2	9.5	2.0	62.8	-2.4	56.4	-3.0
Richmond-Tweed/ Mid-North Coast	204.5	21.2	16.9	-2.6	7.6	-2.0	62.2	1.8	53.6	4.0
Northern/ Far West-North Western/ Central West	243.0	16.6	13.8	0.8	5.4	-0.1	70.8	4.3	63.5	3.7
Murray-Murrumbidgee	131.6	-1.7	8.9	2.7	6.3	1.9	71.3	-2.8	65.7	-0.2
<b>Victoria</b>	<b>2497.1</b>	<b>42.3</b>	<b>137.6</b>	<b>-5.7</b>	<b>5.2</b>	<b>-0.3</b>	<b>71.9</b>	<b>0.7</b>	<b>64.4</b>	<b>0.1</b>
<i>Melbourne</i>	<i>1854.2</i>	<i>27.7</i>	<i>93.4</i>	<i>-1.9</i>	<i>4.8</i>	<i>-0.2</i>	<i>72.6</i>	<i>0.4</i>	<i>65.4</i>	<i>0.1</i>
Outer Western Melbourne	298.2	4.7	20.6	0.8	6.5	0.1	70.5	0.3	66.9	0.4
North Western Melbourne	127.5	-1.0	9.5	-1.9	7.0	-1.2	66.2	-0.5	59.9	-2.0
Inner Melbourne	165.2	15.8	7.2	1.8	4.2	0.7	78.6	5.1	73.6	6.7
North Eastern Melbourne	227.1	12.3	12.1	-2.9	5.0	-1.5	71.7	2.8	66.1	1.9
Inner Eastern Melbourne	308.1	-2.5	13.4	-0.1	4.2	0.0	73.8	-0.1	63.0	-1.2
Southern Melbourne	213.5	6.5	4.4	-2.5	2.0	-1.2	77.4	1.8	64.2	0.4
Outer Eastern Melbourne	206.0	-11.5	11.2	3.1	5.2	1.6	73.9	-3.6	66.9	-3.4
South Eastern Melbourne	176.6	-4.2	7.9	-1.2	4.3	-0.5	68.3	-2.4	62.7	-2.6
Mornington Peninsula	131.9	7.4	7.0	1.1	5.1	0.5	73.5	0.8	66.7	3.1
<i>Balance of Victoria</i>	<i>642.8</i>	<i>14.6</i>	<i>44.2</i>	<i>-3.8</i>	<i>6.4</i>	<i>-0.7</i>	<i>69.9</i>	<i>1.5</i>	<i>61.8</i>	<i>0.2</i>
Barwon-Western District	172.3	3.2	11.4	-0.9	6.2	-0.6	70.0	-0.7	61.5	0.0
Central Highlands-Wimmera (c)	96.5	12.1	6.8	-1.0	6.6	-1.9	71.8	8.7	64.2	6.1
Loddon-Mallee	121.5	6.3	8.7	-2.7	6.7	-2.3	69.0	3.6	60.8	0.9
Goulburn-Ovens-Murray	142.4	-1.1	10.1	2.0	6.6	1.3	71.6	0.3	64.4	-0.5
All Gippsland	110.2	-5.9	7.2	-1.2	6.2	-0.6	67.2	-1.7	58.5	-4.3

(a) The employment rate measures total employment as a proportion of persons aged 15 - 64 years.

(b) The ABS defines metropolitan as those regions located within the State capital cities. Non-metropolitan is defined as those regions located outside the State capital cities as well as the two Territories.

(c) It should be noted that while the ABS estimates suggest that employment growth in Central Highlands-Wimmera has increased strongly in recent months, and has declined significantly in Goulburn-Ovens-Murray, this appears to be the result of statistical variability rather than any actual change in underlying labour market conditions in these regions.

**LABOUR FORCE STATUS BY ABS LABOUR FORCE REGIONS  
DECEMBER QUARTER 2005  
Not Seasonally Adjusted**

State/Region	Employed		Unemployed		Unemployment rate		Employment Rate (a)		Participation rate	
	'000	Annual change	'000	Annual change	%	Annual change (% pts)	%	Annual change (% pts)	%	Annual change (% pts)
<b>Queensland</b>	<b>2005.9</b>	<b>55.0</b>	<b>95.1</b>	<b>4.2</b>	<b>4.5</b>	<b>0.1</b>	<b>73.2</b>	<b>0.4</b>	<b>66.2</b>	<b>0.5</b>
Gold Coast	235.2	7.4	10.8	-0.2	4.4	-0.2	73.3	0.6	63.8	0.5
<i>Brisbane</i>	935.3	20.0	41.4	-2.0	4.2	-0.3	73.6	-0.2	67.2	-0.2
Brisbane City Inner Ring	242.5	0.5	7.6	-3.8	3.0	-1.5	76.8	-1.5	70.1	-2.8
Brisbane City Outer Ring	287.4	2.8	13.0	0.8	4.3	0.2	72.7	-1.0	65.7	-0.4
South and East Brisbane Balance	189.8	3.1	10.2	-0.3	5.1	-0.2	71.1	-0.2	65.9	-0.5
North and West Brisbane Balance	215.5	13.5	10.6	1.3	4.7	0.3	73.7	2.2	67.5	3.1
<i>Balance of Queensland</i>	1070.7	35.0	53.8	6.2	4.8	0.4	72.8	0.9	65.4	1.1
South and East Moreton	230.0	11.8	10.0	0.3	4.2	-0.1	74.3	2.2	65.0	2.0
North and West Moreton	165.5	0.0	9.6	1.2	5.5	0.6	70.8	-0.8	61.5	-0.9
Wide Bay-Burnett	106.5	6.8	9.6	3.3	8.3	2.3	62.1	0.7	56.3	3.8
Darling Downs-South West	131.1	5.8	3.4	0.4	2.5	0.2	77.4	4.5	66.6	1.7
Mackay-Fitzroy-Central West	189.6	7.7	6.5	-2.1	3.3	-1.2	75.6	1.7	69.8	0.5
Northern-North West	132.4	8.1	6.2	-0.9	4.5	-0.9	77.3	1.0	73.9	2.5
Far North	115.6	-5.2	8.6	4.1	6.9	3.3	70.2	-4.2	65.9	-2.0
<b>South Australia</b>	<b>743.5</b>	<b>14.0</b>	<b>37.5</b>	<b>-2.0</b>	<b>4.8</b>	<b>-0.3</b>	<b>71.2</b>	<b>1.0</b>	<b>61.9</b>	<b>0.5</b>
<i>Adelaide</i>	549.5	13.0	29.6	-2.8	5.1	-0.6	71.5	1.6	62.1	0.7
Northern Adelaide	173.0	8.3	10.3	-2.8	5.6	-1.8	70.6	2.7	64.5	1.4
Western Adelaide	96.7	-0.8	5.1	-1.0	5.0	-0.9	71.0	1.7	56.3	-1.3
Eastern Adelaide	119.1	5.5	5.1	1.1	4.1	0.7	74.5	2.4	64.2	3.1
Southern Adelaide	160.7	-0.1	9.1	-0.1	5.4	0.0	70.8	-0.2	61.8	-0.5
<i>Balance of South Australia</i>	194.0	1.0	7.8	0.8	3.9	0.4	70.3	-0.8	61.5	0.1
Northern and Western SA	73.6	1.8	3.3	-0.4	4.3	-0.6	67.8	0.0	60.1	0.6
Southern and Eastern SA	120.4	-0.8	4.6	1.2	3.7	0.9	72.0	-1.4	62.4	-0.3
<b>Western Australia</b>	<b>1059.6</b>	<b>46.7</b>	<b>42.4</b>	<b>-2.9</b>	<b>3.9</b>	<b>-0.4</b>	<b>74.8</b>	<b>2.1</b>	<b>67.9</b>	<b>1.6</b>
<i>Perth</i>	778.2	30.3	31.9	-3.6	3.9	-0.6	74.5	1.7	67.4	1.2
Central Metropolitan	73.0	5.8	1.1	-0.9	1.5	-1.4	75.6	1.9	67.5	3.3
East Metropolitan	131.8	1.2	6.2	0.9	4.5	0.6	74.7	1.4	67.5	-0.1
North Metropolitan	234.8	7.3	10.0	-2.7	4.1	-1.2	76.4	1.7	68.1	0.3
South West Metropolitan	157.4	6.3	6.7	0.6	4.1	0.2	71.7	0.7	65.2	1.7
South East Metropolitan	181.3	9.7	7.9	-1.5	4.2	-1.0	74.3	3.0	68.2	1.9
<i>Balance of Western Australia</i>	281.4	16.4	10.6	0.6	3.6	0.0	75.5	3.0	69.4	3.0
Lower Western WA	146.2	15.0	6.2	0.6	4.1	0.0	75.2	4.6	67.4	5.9
Remainder-Balance WA	135.2	1.4	4.3	0.0	3.1	0.0	75.9	1.2	71.7	-0.4
<b>Tasmania</b>	<b>224.8</b>	<b>8.9</b>	<b>16.0</b>	<b>2.8</b>	<b>6.6</b>	<b>0.9</b>	<b>68.3</b>	<b>1.5</b>	<b>61.6</b>	<b>2.5</b>
Greater Hobart-Southern	109.6	2.5	8.6	1.9	7.2	1.4	67.8	1.6	61.1	1.7
<i>Greater Hobart</i>	94.7	3.4	7.1	1.7	6.9	1.4	68.7	1.8	61.5	2.6
Northern	64.4	1.4	3.7	0.2	5.4	0.2	69.3	0.5	61.8	1.0
Mersey-Lyell	50.8	5.0	3.7	0.7	6.9	0.6	68.0	2.6	62.5	6.1
<b>Northern Territory</b>	<b>98.8</b>	<b>3.3</b>	<b>5.8</b>	<b>-0.3</b>	<b>5.5</b>	<b>-0.5</b>	<b>70.3</b>	<b>0.5</b>	<b>70.6</b>	<b>0.4</b>
<b>Australian Capital Territory</b>	<b>180.4</b>	<b>1.3</b>	<b>5.7</b>	<b>-0.9</b>	<b>3.1</b>	<b>-0.5</b>	<b>78.2</b>	<b>0.2</b>	<b>71.7</b>	<b>-0.5</b>

---

## EXPLANATORY NOTES

### Introduction

The regional labour market estimates presented in this brochure are three-month averages derived from the Australian Bureau of Statistics (ABS) Monthly Labour Force Survey. These estimates are not adjusted to take account of seasonal and other variations and can exhibit irregular movements. They should therefore be used with caution.

### Related information

Users may wish to refer to the DEWR *Small Area Labour Markets, Australia* publication, which is available at <http://www.workplace.gov.au> or free of charge upon request. This publication contains quarterly estimates of unemployment rates and levels for approximately 1,350 Statistical Local Areas.

### Next issue

The next issue of *Australian Regional Labour Markets*, for the March quarter 2006, is expected to be released in late April 2006.

### Contact details

This brochure was prepared by the Economic and Labour Market Analysis Branch, Department of Employment and Workplace Relations, Canberra. For further information on this brochure or related statistics, contact Sarah Hickson in the Labour Market Analysis Section on (02) 6121 6706 or email [sarah.hickson@dewr.gov.au](mailto:sarah.hickson@dewr.gov.au).

More detailed monthly national, State and regional labour force statistics are available from the ABS. For further information on ABS labour force statistics, contact Kate McNally on (02) 6252 6565.

---