



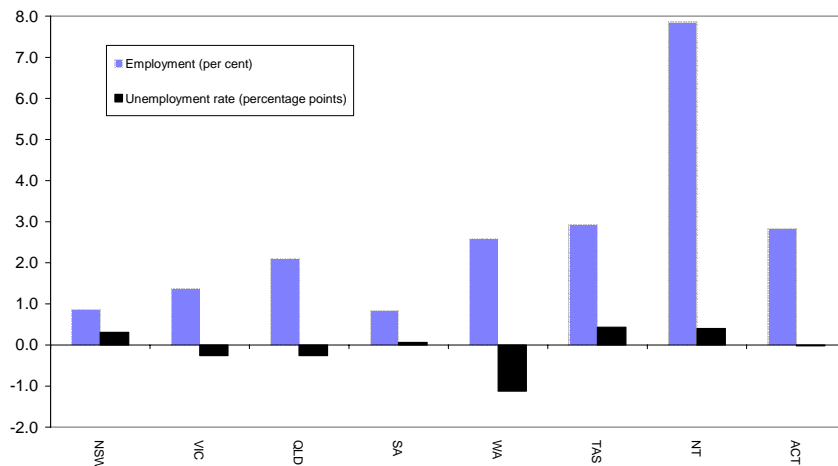
AUSTRALIAN REGIONAL LABOUR MARKETS JUNE QUARTER 2006

MAIN FINDINGS

State/territory labour market developments

Employment rose in all states and territories over the year to the June quarter 2006. The largest increase (in percentage terms) was recorded in the Northern Territory (up by 7.9 per cent), followed by Tasmania (up by 2.9 per cent) and the Australian Capital Territory (up by 2.8 per cent). The unemployment rate fell in Western Australia (down by 1.1 percentage points), Victoria (down by 0.3 percentage points) and Queensland (also down by 0.3 percentage points).

**CHANGE IN EMPLOYMENT AND THE UNEMPLOYMENT RATE
JUNE QUARTER 2005 TO JUNE QUARTER 2006**



Developments at the ABS Labour Force Region Level

Employment increased in approximately 74 per cent of regions over the year to the June quarter 2006, while 51 per cent of regions recorded a reduction in their unemployment rate. A number of regions have recorded strong employment growth as well as a significant reduction in their unemployment rate over the last 12 months. In particular:

- Central Northern Sydney recorded a 9.1 per cent increase in employment while the unemployment rate fell by 1.0 percentage point to 2.7 per cent;
- North Western Melbourne recorded an 8.0 per cent increase in employment while the unemployment rate fell by 2.9 percentage points to 5.6 per cent; and
- employment in Mackay-Fitzroy-Central West in Queensland rose by 4.9 per cent while the unemployment rate fell by 2.2 percentage points to 2.8 per cent.

LABOUR FORCE STATUS BY ABS LABOUR FORCE REGIONS
JUNE QUARTER 2006
Not Seasonally Adjusted

State/Region	Employed		Unemployed		Unemployment rate		Employment rate (a)		Participation rate	
	'000	Annual change	'000	Annual change	%	Annual change (% pts)	%	Annual change (% pts)	%	Annual change (% pts)
AUSTRALIA	10 143.4	156.4	529.4	-4.7	5.0	-0.1	72.0	0.3	64.6	0.0
<i>Metropolitan Australia (b)</i>	6394.9	67.5	309.4	-11.4	4.6	-0.2	72.6	-0.1	65.4	-0.3
<i>Non-metropolitan Australia (b)</i>	3748.6	88.9	219.9	6.7	5.5	0.0	71.0	0.9	63.3	0.6
New South Wales	3276.9	28.4	187.4	12.7	5.4	0.3	70.4	0.0	63.1	0.2
<i>Sydney</i>	2151.7	1.4	109.3	7.6	4.8	0.3	71.9	-0.6	65.1	-0.3
Inner Sydney and Inner Western Sydney	273.1	7.7	14.0	4.3	4.9	1.4	73.8	0.8	69.6	2.3
Inner Sydney	189.4	13.8	10.9	3.7	5.4	1.5	75.5	2.5	74.1	5.8
Eastern Suburbs	136.1	-4.8	3.9	-1.6	2.8	-1.0	75.2	-1.5	65.5	-3.5
St George-Sutherland	231.4	-15.4	7.9	-3.5	3.3	-1.1	75.8	-2.0	64.9	-5.7
Canterbury-Bankstown	135.5	2.0	8.9	1.2	6.1	0.7	64.2	-1.3	56.3	0.7
Fairfield-Liverpool/ Outer South Western Sydney	266.4	-23.1	22.9	6.6	7.9	2.6	65.0	-5.1	62.1	-4.2
Fairfield-Liverpool	146.8	-22.7	13.5	4.2	8.4	3.2	61.2	-7.0	57.0	-7.2
Central Western Sydney	137.6	0.9	9.2	1.8	6.3	1.1	64.4	-1.3	59.0	0.5
North Western Sydney	289.8	2.4	15.5	-3.0	5.1	-1.0	70.6	-0.5	65.7	-0.8
Lower Northern Sydney	172.9	2.3	6.3	0.8	3.5	0.4	76.6	0.6	69.4	0.6
Central Northern Sydney	233.2	19.5	6.5	-1.7	2.7	-1.0	78.3	4.2	70.3	4.6
Northern Beaches	130.0	-5.3	3.1	-0.9	2.4	-0.5	80.3	-1.2	67.2	-3.7
Gosford-Wyong	145.7	15.2	11.1	3.6	7.1	1.6	71.7	4.0	63.5	7.1
<i>Balance of New South Wales</i>	1125.1	27.0	78.1	5.1	6.5	0.3	67.7	1.1	59.6	1.0
Hunter	280.9	11.6	19.2	2.7	6.4	0.6	67.9	0.8	61.2	2.4
Newcastle	239.7	14.0	16.1	1.2	6.3	0.1	68.3	1.1	62.3	3.1
Illawarra and South Eastern	259.4	-5.4	18.6	1.6	6.7	0.7	65.1	-1.8	56.4	-1.3
Illawarra	161.4	-14.0	14.7	2.3	8.4	1.8	61.9	-4.1	53.0	-4.0
Wollongong	118.1	-8.3	9.7	3.0	7.6	2.5	63.3	-5.9	56.9	-3.0
Richmond-Tweed/ Mid-North Coast	203.0	0.6	19.7	-1.4	8.9	-0.6	62.3	2.2	53.7	-0.8
Northern/ Far West-North Western/ Central West	249.3	12.4	12.3	0.6	4.7	0.0	73.8	2.7	64.4	2.6
Murray-Murrumbidgee	132.5	7.8	8.2	1.6	5.9	0.8	71.8	3.3	65.5	3.7
Victoria	2516.5	34.3	134.7	-5.4	5.1	-0.3	71.9	0.1	64.4	-0.1
<i>Melbourne</i>	1860.5	21.9	93.2	-4.3	4.8	-0.3	72.3	-0.1	65.2	-0.2
Outer Western Melbourne	287.5	-1.9	17.8	-1.0	5.8	-0.3	69.1	-0.4	63.7	-1.4
North Western Melbourne	135.2	10.0	8.1	-3.6	5.6	-2.9	67.8	3.0	62.2	2.0
Inner Melbourne	167.3	8.2	6.3	-1.8	3.6	-1.2	79.4	4.3	73.7	1.9
North Eastern Melbourne	224.4	2.2	10.5	-0.9	4.5	-0.4	71.0	0.1	64.5	-0.5
Inner Eastern Melbourne	309.5	-3.7	14.5	-0.8	4.5	-0.2	71.7	-3.3	63.1	-1.7
Southern Melbourne	212.2	3.8	9.9	4.5	4.4	1.9	75.7	-1.3	65.0	1.6
Outer Eastern Melbourne	213.7	1.3	9.1	0.1	4.1	0.0	77.0	0.9	68.1	-0.4
South Eastern Melbourne	179.7	1.5	10.3	-1.1	5.4	-0.6	68.8	-0.4	64.1	-0.7
Mornington Peninsula	131.1	0.4	6.7	0.2	4.9	0.1	72.1	-1.0	65.7	-0.7
<i>Balance of Victoria</i>	656.0	12.4	41.6	-1.1	6.0	-0.3	70.8	0.9	62.4	0.2
Barwon-Western District	180.7	11.9	10.2	-1.0	5.4	-0.9	72.8	2.1	63.5	2.8
Central Highlands-Wimmera	91.0	-8.1	8.7	2.9	8.7	3.2	67.9	-6.0	61.5	-4.1
Loddon-Mallee	127.4	6.2	8.9	1.6	6.5	0.8	70.5	1.3	63.2	2.8
Goulburn-Ovens-Murray	146.3	6.2	7.6	-0.5	4.9	-0.5	72.1	2.4	64.6	1.5
All Gippsland	110.6	-3.8	6.2	-4.0	5.3	-2.9	69.1	2.3	57.8	-4.7

(a) The employment rate is the proportion of the working age (15-64) population that are employed.

(b) The ABS defines metropolitan as those regions located within the state capital cities. Non-metropolitan is defined as those regions located outside the state capital cities as well as the two territories.

LABOUR FORCE STATUS BY ABS LABOUR FORCE REGIONS
JUNE QUARTER 2006
Not Seasonally Adjusted

State/Region	Employed		Unemployed		Unemployment rate		Employment Rate (a)		Participation rate	
	'000	Annual change	'000	Annual change	%	Annual change (% pts)	%	Annual change (% pts)	%	Annual change (% pts)
Queensland	2023.0	41.7	101.3	-3.6	4.8	-0.3	73.3	0.2	66.2	-0.3
Gold Coast	242.1	11.8	10.4	-1.9	4.1	-0.9	74.4	0.9	64.8	1.2
<i>Brisbane</i>	953.9	23.2	42.7	-5.4	4.3	-0.6	74.5	0.4	67.9	-0.3
Brisbane City Inner Ring	241.7	-2.6	8.1	-3.6	3.2	-1.3	75.4	-2.2	69.3	-3.4
Brisbane City Outer Ring	299.8	5.7	12.9	-1.2	4.1	-0.5	75.5	0.1	67.6	-0.4
South and East Brisbane Balance	197.6	12.5	10.3	0.2	5.0	-0.2	72.6	1.6	67.8	2.7
North and West Brisbane Balance	214.7	7.5	11.5	-0.8	5.1	-0.5	73.8	2.4	66.8	0.5
<i>Balance of Queensland</i>	1069.2	18.5	58.6	1.8	5.2	0.1	72.3	0.0	64.9	-0.3
South and East Moreton	231.5	6.5	10.4	-1.2	4.3	-0.6	74.1	0.0	64.8	0.0
North and West Moreton	165.6	-0.1	11.0	1.6	6.2	0.9	70.6	0.1	61.3	-0.8
Wide Bay-Burnett	100.4	-1.6	8.5	1.4	7.8	1.3	60.0	-1.9	52.2	-1.3
Darling Downs-South West	129.7	4.7	6.5	1.9	4.8	1.3	73.7	0.3	66.7	1.8
Mackay-Fitzroy-Central West	193.8	9.1	5.5	-4.1	2.8	-2.2	76.2	2.8	70.2	0.2
Northern-North West	131.6	0.2	8.5	1.9	6.1	1.3	77.5	-1.3	73.8	-0.6
Far North	116.4	-0.3	8.1	0.3	6.5	0.2	70.6	-1.8	65.3	-1.5
South Australia	747.4	6.2	39.8	0.8	5.1	0.1	71.3	0.1	62.1	0.0
<i>Adelaide</i>	550.6	4.1	30.1	-1.9	5.2	-0.4	71.3	0.1	62.0	-0.3
Northern Adelaide	169.5	1.0	11.2	0.5	6.2	0.2	68.0	-1.0	63.3	0.0
Western Adelaide	97.1	1.5	4.7	-1.9	4.6	-1.8	69.2	0.5	56.0	-0.7
Eastern Adelaide	121.3	8.4	4.7	-0.6	3.7	-0.8	76.1	3.0	64.9	3.5
Southern Adelaide	162.8	-6.8	9.5	0.0	5.5	0.2	73.0	-0.7	62.5	-3.0
<i>Balance of South Australia</i>	196.8	2.1	9.7	2.8	4.7	1.3	71.3	0.1	62.7	0.9
Northern and Western SA	77.4	5.9	4.5	1.3	5.4	1.2	69.5	0.8	63.8	5.0
Southern and Eastern SA	119.3	-3.7	5.2	1.5	4.2	1.2	72.5	-0.3	61.9	-1.7
Western Australia	1068.3	27.0	39.6	-11.7	3.6	-1.1	75.0	0.8	67.7	-0.3
<i>Perth</i>	780.1	14.5	29.6	-7.0	3.7	-0.9	74.1	0.2	66.8	-0.6
Central Metropolitan	71.1	-2.6	2.1	-0.4	2.8	-0.4	74.7	-2.3	66.1	-4.0
East Metropolitan	128.8	2.7	5.1	-1.2	3.8	-0.9	72.4	0.2	65.0	-0.4
North Metropolitan	242.8	9.0	10.0	-0.1	4.0	-0.2	76.9	0.5	69.7	1.3
South West Metropolitan	163.0	7.5	5.2	-3.1	3.1	-2.0	73.7	2.3	66.3	0.5
South East Metropolitan	174.3	-2.1	7.2	-2.3	4.0	-1.1	71.9	-1.2	64.9	-2.8
<i>Balance of Western Australia</i>	288.1	12.4	10.0	-4.7	3.3	-1.7	77.4	2.5	70.2	0.6
Lower Western WA	148.4	6.5	4.6	-3.6	3.0	-2.4	76.1	1.2	67.0	0.1
Remainder-Balance WA	139.8	6.0	5.4	-1.2	3.7	-1.0	78.8	3.9	73.9	1.1
Tasmania	225.1	6.4	14.6	1.5	6.1	0.4	68.4	1.4	61.1	1.6
Greater Hobart-Southern	111.8	3.0	5.9	-0.9	5.0	-0.9	68.4	0.7	60.6	0.7
<i>Greater Hobart</i>	98.0	2.4	4.5	-0.3	4.4	-0.4	70.4	0.9	61.7	0.9
Northern	63.4	2.2	3.4	0.3	5.0	0.2	68.3	1.3	60.4	1.8
Mersey-Lyell	49.9	1.2	5.3	2.1	9.6	3.5	68.6	2.9	63.1	3.4
Northern Territory	101.0	7.4	5.8	0.8	5.4	0.4	70.6	3.2	71.1	3.5
Australian Capital Territory	185.3	5.1	6.1	0.1	3.2	0.0	79.7	1.4	73.3	1.3

(a) The employment rate is the proportion of the working age (15-64) population that are employed.

EXPLANATORY NOTES

Introduction

The regional labour market estimates presented in this brochure are three-month averages derived from the Australian Bureau of Statistics (ABS) Monthly Labour Force Survey. These estimates are not adjusted to take account of seasonal and other variations and can exhibit irregular movements. They should therefore be used with caution.

Related information

Users may wish to refer to the DEWR *Small Area Labour Markets, Australia* publication, which is available, free of charge, at <http://www.workplace.gov.au> (in PDF format), or as a printed booklet upon request. This publication contains quarterly estimates of unemployment rates and levels for approximately 1350 Statistical Local Areas.

Next issue

The next issue of *Australian Regional Labour Markets*, for the September quarter 2006, is expected to be released in late October 2006.

Contact details

This brochure was prepared by the Economic and Labour Market Analysis Branch, Department of Employment and Workplace Relations, Canberra. For further information on this brochure or related statistics, contact Sarah Hickson in the Labour Market Analysis Section on (02) 6121 6706 or email sarah.hickson@dewr.gov.au.

More detailed monthly national, state and regional labour force statistics are available from the ABS. For further information on ABS labour force statistics, go to the 'Labour' theme page at the ABS website (www.abs.gov.au), or contact Kate McNally on (02) 6252 6565.
