



AUSTRALIAN REGIONAL LABOUR MARKETS

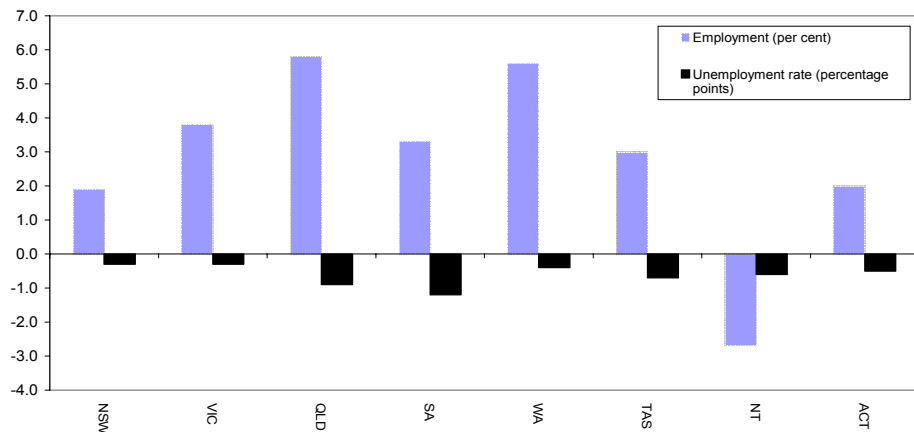
JUNE QUARTER 2005

MAIN FINDINGS

State/Territory labour market developments

Over the year to the June quarter 2005, employment rose in all States and the ACT. The largest increase (in percentage terms) was recorded in Queensland (up by 5.8 per cent), followed by Western Australia (up by 5.6 per cent) and Victoria (up by 3.8 per cent). Over the same period, the unemployment rate fell in all States and Territories.

CHANGE IN EMPLOYMENT AND THE UNEMPLOYMENT RATE, JUNE QUARTER 2004 TO JUNE QUARTER 2005



Developments at the ABS Labour Market Region Level

Employment increased in around 79 per cent of regions over the year to the June quarter 2005 while 76 per cent of regions recorded a reduction in their unemployment rate. A number of regions have recorded strong employment growth as well as a significant reduction in their unemployment rate over the last 12 months. In particular:

- employment in Lower Western WA rose by 16.5 per cent while the unemployment rate fell by 1.2 percentage points to 5.4 per cent;
- Central Highlands-Wimmera in Victoria recorded a 14.6 per cent increase in employment while the unemployment rate fell by 1.4 percentage points to 5.5 per cent; and
- Sydney's Eastern Suburbs recorded a 13.5 per cent increase in employment while the unemployment rate fell by 0.5 percentage points to 3.8 per cent.

LABOUR FORCE STATUS BY ABS LABOUR FORCE REGIONS
JUNE QUARTER 2005
Not Seasonally Adjusted

State/Region	Employed		Unemployed		Unemployment rate		Employment rate*		Participation rate	
	'000	Annual change	'000	Annual change	%	Annual change (% pts)	%	Annual change (% pts)	%	Annual change (% pts)
AUSTRALIA	9987.0	348.1	534.1	-35.5	5.1	-0.5	71.7	1.5	64.5	1.1
<i>Metropolitan Australia**</i>	<i>6327.4</i>	<i>226.7</i>	<i>320.8</i>	<i>-16.0</i>	<i>4.8</i>	<i>-0.4</i>	<i>72.7</i>	<i>1.8</i>	<i>65.7</i>	<i>1.2</i>
<i>Non-metropolitan Australia**</i>	<i>3659.7</i>	<i>121.4</i>	<i>213.2</i>	<i>-19.5</i>	<i>5.5</i>	<i>-0.7</i>	<i>70.1</i>	<i>1.1</i>	<i>62.7</i>	<i>0.8</i>
New South Wales	3248.5	60.8	174.7	-8.9	5.1	-0.3	70.4	0.7	62.9	0.4
<i>Sydney</i>	<i>2150.3</i>	<i>45.6</i>	<i>101.7</i>	<i>-7.4</i>	<i>4.5</i>	<i>-0.4</i>	<i>72.5</i>	<i>1.1</i>	<i>65.4</i>	<i>0.5</i>
Inner Sydney and Inner Western Sydney	265.4	1.0	9.6	-2.4	3.5	-0.8	72.9	-1.7	67.3	-1.1
Inner Sydney	175.6	-3.0	7.1	-0.6	3.9	-0.3	73.0	-1.9	68.3	-2.3
Eastern Suburbs	140.9	16.7	5.5	0.0	3.8	-0.5	76.7	4.7	69.0	7.5
St George-Sutherland	246.9	14.1	11.4	2.8	4.4	0.9	77.8	1.5	70.7	4.1
Canterbury-Bankstown	133.5	-1.1	7.7	-3.2	5.5	-2.1	65.5	1.5	55.6	-2.2
Fairfield-Liverpool/ Outer South Western Sydney	289.5	18.8	16.3	-4.8	5.3	-1.9	70.2	4.5	66.3	2.3
Fairfield-Liverpool	169.5	8.4	9.4	-2.4	5.2	-1.6	68.3	2.5	64.2	1.4
Central Western Sydney	136.7	2.4	7.5	2.4	5.2	1.5	65.7	0.8	58.5	1.4
North Western Sydney	287.4	-3.4	18.5	2.6	6.0	0.9	71.1	0.6	66.4	-0.8
Lower Northern Sydney	170.6	4.8	5.5	-0.2	3.1	-0.2	76.0	-2.2	68.8	1.2
Central Northern Sydney	213.7	-6.3	8.2	0.4	3.7	0.3	74.1	-0.5	65.7	-2.3
Northern Beaches	135.3	-2.0	4.0	-0.1	2.9	-0.1	81.5	0.4	71.0	-1.7
Gosford-Wyong	130.5	0.4	7.5	-5.0	5.4	-3.3	67.7	1.4	56.5	-2.5
<i>Balance of New South Wales</i>	<i>1098.2</i>	<i>15.2</i>	<i>73.0</i>	<i>-1.5</i>	<i>6.2</i>	<i>-0.2</i>	<i>66.6</i>	<i>0.1</i>	<i>58.6</i>	<i>0.1</i>
Hunter	269.3	0.2	16.5	-3.5	5.8	-1.1	67.1	1.0	58.8	-1.3
Newcastle	225.8	0.4	14.9	-1.7	6.2	-0.7	67.2	1.6	59.2	-0.9
Illawarra and South Eastern	264.8	9.2	17.0	-0.5	6.0	-0.4	66.9	1.8	57.7	1.4
Illawarra	175.4	12.3	12.4	-2.1	6.6	-1.6	66.0	3.2	57.0	2.7
Wollongong	126.5	7.3	6.7	-3.3	5.1	-2.7	69.2	3.8	59.8	1.3
Richmond-Tweed/ Mid-North Coast	202.5	-0.7	21.1	4.8	9.4	2.0	60.1	-3.6	54.4	0.5
Northern/ Far West-North Western/ Central West	236.9	17.9	11.8	-3.1	4.7	-1.6	71.1	5.4	61.8	3.1
Murray-Murrumbidgee	124.6	-11.4	6.6	0.9	5.1	1.0	68.4	-8.9	61.8	-5.6
Victoria	2482.3	91.8	140.1	-1.6	5.3	-0.3	71.8	1.7	64.5	1.4
<i>Melbourne</i>	<i>1838.7</i>	<i>66.6</i>	<i>97.5</i>	<i>0.5</i>	<i>5.0</i>	<i>-0.2</i>	<i>72.4</i>	<i>1.8</i>	<i>65.4</i>	<i>1.4</i>
Outer Western Melbourne	289.4	12.0	18.8	-4.7	6.1	-1.7	69.5	3.4	65.1	0.7
North Western Melbourne	125.2	-2.5	11.7	2.7	8.5	2.0	64.8	-1.9	60.2	-0.7
Inner Melbourne	159.0	11.3	8.0	-2.4	4.8	-1.8	75.1	4.3	71.8	3.0
North Eastern Melbourne	222.1	16.9	11.4	-0.8	4.9	-0.7	70.9	3.2	64.9	3.7
Inner Eastern Melbourne	313.2	16.6	15.3	4.0	4.7	1.0	74.9	2.4	64.8	3.3
Southern Melbourne	208.4	-0.7	5.4	-2.3	2.5	-1.0	77.0	2.1	63.4	-1.7
Outer Eastern Melbourne	212.4	6.0	9.0	-0.4	4.1	-0.3	76.1	1.2	68.6	0.8
South Eastern Melbourne	178.2	-4.1	11.4	2.3	6.0	1.2	69.2	-1.5	64.8	-1.5
Mornington Peninsula	130.7	11.1	6.5	2.1	4.7	1.2	73.0	0.4	66.4	5.5
<i>Balance of Victoria</i>	<i>643.6</i>	<i>25.1</i>	<i>42.6</i>	<i>-2.2</i>	<i>6.2</i>	<i>-0.5</i>	<i>69.9</i>	<i>1.5</i>	<i>62.2</i>	<i>1.3</i>
Barwon-Western District	168.8	10.9	11.3	-3.2	6.3	-2.1	70.7	3.7	60.7	1.8
Central Highlands-Wimmera	99.1	12.6	5.8	-0.6	5.5	-1.4	73.9	9.5	65.6	6.7
Loddon-Mallee	121.2	8.7	7.3	-1.7	5.7	-1.7	69.2	3.9	60.4	2.5
Goulburn-Ovens-Murray	140.1	-8.7	8.0	1.4	5.4	1.2	69.7	-5.7	63.1	-4.0
All Gippsland	114.4	1.6	10.2	1.9	8.2	1.3	66.7	-2.2	62.5	0.9

* The employment rate measures total employment as a proportion of persons aged 15 - 64 years.

**The ABS defines metropolitan as those regions located within the State capital cities. Non-metropolitan is defined as those regions located outside the State capital cities as well as the two Territories.

LABOUR FORCE STATUS BY ABS LABOUR FORCE REGIONS
JUNE QUARTER 2005
Not Seasonally Adjusted

State/Region	Employed		Unemployed		Unemployment rate		Employment Rate*		Participation rate	
	'000	Annual change	'000	Annual change	%	Annual change (% pts)	%	Annual change (% pts)	%	Annual change (% pts)
Queensland	1981.4	109.1	104.9	-12.1	5.0	-0.9	73.1	2.3	66.5	1.6
Gold Coast	230.2	12.5	12.3	0.6	5.1	0.0	73.5	3.7	63.6	2.0
<i>Brisbane</i>	<i>930.7</i>	<i>57.3</i>	<i>48.2</i>	<i>-4.0</i>	<i>4.9</i>	<i>-0.7</i>	<i>74.1</i>	<i>2.9</i>	<i>68.1</i>	<i>2.2</i>
Brisbane City Inner Ring	244.3	9.4	11.7	-0.3	4.6	-0.3	77.6	1.0	72.6	0.8
Brisbane City Outer Ring	294.1	22.4	14.1	-1.2	4.6	-0.8	75.4	4.8	68.0	3.3
South and East Brisbane Balance	185.1	4.7	10.1	-3.4	5.2	-1.8	71.0	1.9	65.0	-1.1
North and West Brisbane Balance	207.2	20.8	12.3	1.0	5.6	-0.1	71.4	3.3	66.2	5.2
<i>Balance of Queensland</i>	<i>1050.7</i>	<i>51.8</i>	<i>56.7</i>	<i>-8.1</i>	<i>5.1</i>	<i>-1.0</i>	<i>72.3</i>	<i>1.8</i>	<i>65.1</i>	<i>1.1</i>
South and East Moreton	225.0	16.6	11.6	0.9	4.9	0.0	74.1	4.2	64.8	3.4
North and West Moreton	165.8	7.3	9.4	-1.0	5.4	-0.8	70.5	0.8	62.2	0.8
Wide Bay-Burnett	102.0	8.6	7.1	-5.4	6.5	-5.3	61.9	4.2	53.5	0.4
Darling Downs-South West	125.0	3.4	4.6	-1.8	3.5	-1.5	73.4	2.0	64.8	-0.7
Mackay-Fitzroy-Central West	184.7	10.9	9.6	-2.4	4.9	-1.5	73.3	0.2	69.9	1.5
Northern-North West	131.5	10.3	6.6	-0.2	4.8	-0.5	78.8	3.6	74.4	4.0
Far North	116.8	-5.3	7.9	1.7	6.3	1.5	72.4	-2.7	66.8	-3.5
South Australia	741.2	23.8	39.0	-8.7	5.0	-1.2	71.2	1.9	62.1	0.8
<i>Adelaide</i>	<i>546.5</i>	<i>17.4</i>	<i>32.1</i>	<i>-3.9</i>	<i>5.5</i>	<i>-0.8</i>	<i>71.2</i>	<i>1.9</i>	<i>62.3</i>	<i>1.1</i>
Northern Adelaide	168.5	9.3	10.7	-2.8	6.0	-1.8	69.0	3.8	63.3	1.9
Western Adelaide	95.5	3.7	6.6	-0.7	6.5	-0.9	68.7	1.4	56.7	1.3
Eastern Adelaide	112.9	-5.0	5.3	1.2	4.5	1.1	73.2	-1.7	61.4	-2.3
Southern Adelaide	169.6	9.4	9.4	-1.7	5.3	-1.2	73.7	2.8	65.5	2.4
<i>Balance of South Australia</i>	<i>194.6</i>	<i>6.4</i>	<i>6.9</i>	<i>-4.8</i>	<i>3.4</i>	<i>-2.4</i>	<i>71.2</i>	<i>2.0</i>	<i>61.7</i>	<i>0.0</i>
Northern and Western SA	71.6	-0.1	3.1	-2.1	4.2	-2.6	68.7	2.0	58.8	-2.1
Southern and Eastern SA	123.0	6.5	3.8	-2.7	3.0	-2.3	72.8	1.9	63.6	1.4
Western Australia	1041.3	55.2	51.3	-1.2	4.7	-0.4	74.2	2.5	67.9	2.2
<i>Perth</i>	<i>765.6</i>	<i>34.9</i>	<i>36.6</i>	<i>-0.4</i>	<i>4.6</i>	<i>-0.3</i>	<i>73.9</i>	<i>2.0</i>	<i>67.3</i>	<i>1.8</i>
Central Metropolitan	73.7	4.0	2.5	-0.9	3.2	-1.3	77.0	2.5	70.1	1.6
East Metropolitan	126.1	3.3	6.3	0.7	4.8	0.4	72.3	0.9	65.4	0.8
North Metropolitan	233.8	13.9	10.1	-1.2	4.1	-0.8	76.4	3.4	68.5	2.5
South West Metropolitan	155.6	7.6	8.3	-0.4	5.0	-0.5	71.4	1.1	65.7	1.7
South East Metropolitan	176.5	6.1	9.6	1.3	5.1	0.5	73.1	1.8	67.7	1.6
<i>Balance of Western Australia</i>	<i>275.7</i>	<i>20.3</i>	<i>14.7</i>	<i>-0.8</i>	<i>5.1</i>	<i>-0.7</i>	<i>74.9</i>	<i>3.9</i>	<i>69.7</i>	<i>3.5</i>
Lower Western WA	141.9	20.1	8.2	-0.5	5.4	-1.2	74.9	8.6	66.9	7.7
Remainder-Balance WA	133.8	0.3	6.5	-0.3	4.6	-0.2	74.9	-1.0	72.8	-1.3
Tasmania	218.6	6.3	13.1	-1.3	5.7	-0.7	67.0	1.0	59.5	0.6
Greater Hobart-Southern	108.8	3.0	6.8	0.2	5.9	0.0	67.7	1.5	60.0	0.9
<i>Greater Hobart</i>	<i>95.5</i>	<i>4.8</i>	<i>4.8</i>	<i>-0.8</i>	<i>4.8</i>	<i>-1.0</i>	<i>69.5</i>	<i>3.0</i>	<i>60.9</i>	<i>1.8</i>
Northern	61.2	-0.3	3.1	-1.0	4.8	-1.5	66.9	-1.3	58.6	-1.9
Mersey-Lyell	48.6	3.7	3.2	-0.4	6.1	-1.3	65.7	2.6	59.7	3.1
Northern Territory	93.7	-2.6	5.0	-0.8	5.0	-0.6	67.4	-3.2	67.6	-3.5
Australian Capital Territory	180.2	3.6	6.0	-0.8	3.2	-0.5	78.3	1.3	72.0	0.5

EXPLANATORY NOTES

Introduction

The regional labour market estimates presented in this brochure are three monthly averages derived from the Australian Bureau of Statistics (ABS) Monthly Labour Force Survey. These estimates are not adjusted to take account of seasonal and other variations and can exhibit irregular movements. They should therefore be used with caution.

Related information

Users may wish to refer to the DEWR *Small Area Labour Markets, Australia* publication which is available at <http://www.workplace.gov.au> or free of charge upon request. This publication contains quarterly estimates of unemployment rates and levels for approximately 1,350 Statistical Local Areas.

Next issue

The next issue of *Australian Regional Labour Markets*, for the September quarter 2005, is expected to be released in late October 2005.

Contact details

This brochure was prepared by the Economic and Labour Market Analysis Branch, Department of Employment and Workplace Relations, Canberra. For further information on this brochure or related statistics, contact Marjorie Tippetts in the Labour Market Analysis Section on (02) 6121 6198 or email marjorie.tippetts@dewr.gov.au.

More detailed monthly national, State and regional labour force statistics are available from the ABS. For further information on ABS labour force statistics, contact Kate McNalley on (02) 6252 6565.
