

LABOUR MARKET AND RELATED PAYMENTS

a monthly profile

Note: The Australian Bureau of Statistics (ABS) produces the official unemployment statistics. The figures contained in this publication are different from the ABS unemployment figures as the ABS and the Department of Education, Employment and Workplace Relations (DEEWR) use different definitions to identify the unemployed and different methods of counting (see the Appendix for more information).

This publication can be found at <http://www.workplace.gov.au/lmrp>

November 2009

Embargoed

Until 11.30 am, 23 December 2009

Annual Subscription - \$65.00

CONTENTS

	<i>Page</i>
Introduction	1
Statistical Highlights	2
Tables	
1. Labour Market Payments - Time Series	3
2. Newstart Allowees - Derivation of the job seeker population	4
3. Youth Allowees (other) - Derivation of the job seeker population	5
4. Job seekers receiving Newstart Allowance and Youth Allowance (other) - Time Series	6
5. Job seekers receiving Newstart Allowance and Youth Allowance (other) by State	7
6. Job seekers receiving Newstart Allowance and Youth Allowance (other) by Age and Sex	8
7. Job seekers receiving Newstart Allowance and Youth Allowance (other) by Area Support Office and Customer Service Centre	9
8. Job seekers receiving Newstart Allowance and Youth Allowance (other) by Fortnightly Earnings and Sex	23
Explanatory Notes	24
Glossary	30
Appendix	33
For More Information	36

INTRODUCTION

This publication presents statistical information on a monthly basis for the various types of labour market payments delivered by Centrelink on behalf of the Department of Education, Employment and Workplace Relations (DEEWR). This publication was produced previously by the Department of Employment and Workplace Relations (DEWR).

This publication covers NSA and YA(o) in some detail, and to a lesser extent, MAA, PA, WA, YA(FTS) and YA (Australian Apprentices).

Table 1 provides information on the total number of NSA and YA recipients. The YA population is broken down into YA(o), YA(FTS) and YA(Australian Apprentices) categories. The total numbers of MAA, PA and WA recipients are also provided in this table.

Tables 2 and 3 show the derivation of the NSA and YA(o) job seeker populations (see the reference to job seekers in the 'Comparability of data' section of the Explanatory Notes). These populations are added together to derive the total number of job seekers.

Tables 4 to 8 provide information on the total job seeker population.

When using time series figures, it is important to note that changes have occurred over time to the conditions of eligibility for different payments. Details of these changes are provided in the Explanatory Notes.

All media inquiries should be directed to the DEEWR Media Team on (02) 6240 7300 or by email to media@deewr.gov.au. For more general inquiries regarding further statistical information please refer to the last page of this publication for other contact details.

The next issue of this publication is scheduled for release on 27 January 2010.

STATISTICAL HIGHLIGHTS – November 2009

Between November 2008 and November 2009

Total Newstart Allowance (NSA) and Youth Allowance (other) (YA(o)) recipients **increased 30.5 per cent** overall from 501 323 to 654 016.

- ◆ NSA recipients increased 30.4 per cent from 437 270 to 570 291
- ◆ YA(o) recipients increased 30.7 per cent from 64 053 to 83 725.

The number of job seekers **increased 27.1 per cent** overall from 288 158 to 366 179.

- ◆ NSA job seekers increased 29.2 per cent from 238 991 to 308 854
- ◆ YA(o) job seekers increased 16.6 per cent from 49 167 to 57 325.

Long-term job seekers increased 12.7 per cent from 141 488 to 159 415.

Short-term job seekers increased 41.0 per cent from 146 670 to 206 764.

NOTE: There is a break in the series between June and July 2009. Post July 2009 job seeker data is not wholly comparable with previously published data (see Explanatory Notes). This change does not affect overall recipient numbers.

For comparisons between DEEWR unemployment labour market payment numbers and ABS labour force unemployment statistics, see Appendix.

**Newstart Allowance and Youth Allowance (other)
November 2008 to November 2009**

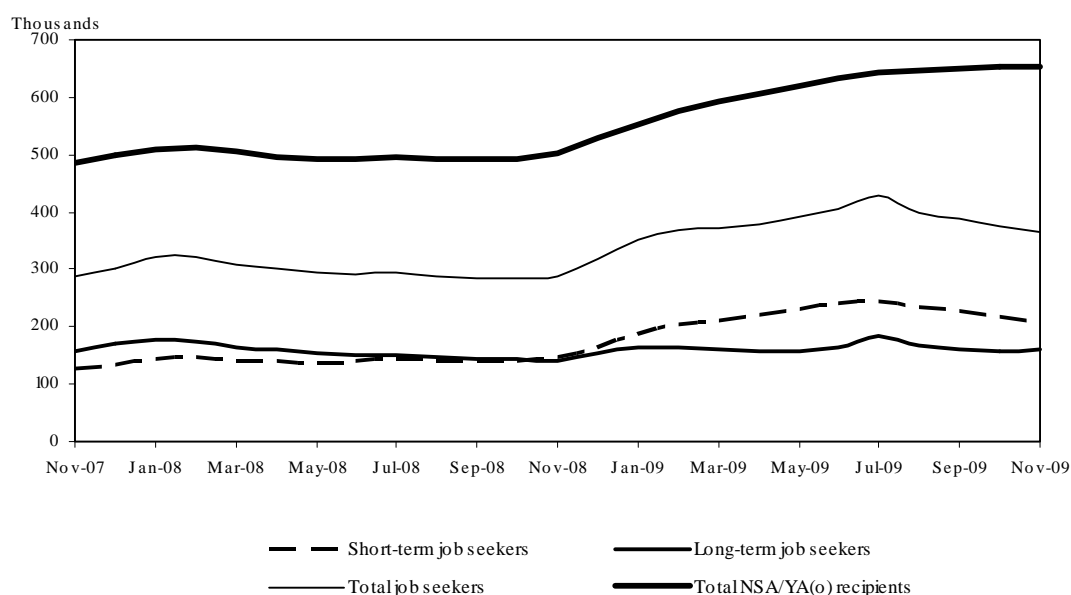


TABLE 1 - LABOUR MARKET PAYMENTS - TIME SERIES

	Newstart Allowance		Youth Allowance			Mature Age Allowance	Partner Allowance	Widow Allowance
	Long-term	Total	Other	Full-time Students	Australian Apprentices			
February 1994	472,785	977,796
November 2007	261,930	424,168	59,967	249,546	4,093	3,242	44,358	41,278
December 2007	264,127	428,962	69,320	215,158	3,956	2,868	43,997	41,400
January 2008	266,199	437,918	69,709	206,509	3,746	2,518	43,434	41,297
February 2008	266,368	443,916	69,728	213,384	3,897	2,149	42,512	41,014
March 2008	263,759	438,786	65,889	227,301	4,094	1,797	41,528	40,729
April 2008	260,541	433,674	63,680	236,930	4,274	1,503	40,708	40,503
May 2008	257,363	429,363	63,395	245,421	4,419	1,166	39,804	40,124
June 2008	255,550	428,896	63,972	252,180	4,444	856	38,915	39,702
July 2008	254,723	429,989	65,514	248,493	4,402	586	38,109	39,321
August 2008	253,131	429,459	63,347	254,853	4,256	307	37,226	38,946
September 2008	251,987	429,426	62,832	258,973	4,018	47	36,411	38,640
October 2008	251,529	431,546	62,227	259,337	3,882	0	35,572	38,375
November 2008	251,170	437,270	64,053	247,471	3,683	0	34,733	38,142
December 2008	254,327	453,485	74,786	218,371	3,665	0	34,011	37,989
January 2009	258,403	475,183	76,613	208,624	3,506	0	33,234	37,753
February 2009	261,232	498,020	78,868	218,999	3,570	0	32,480	37,561
March 2009	262,162	514,265	78,259	238,274	3,707	0	31,802	37,364
April 2009	262,468	527,686	78,441	253,363	3,815	0	31,171	37,128
May 2009	264,337	540,729	79,787	264,591	3,873	0	30,423	36,847
June 2009	266,942	551,067	81,783	274,033	3,987	0	29,691	36,549
July 2009	270,978	559,577	84,064	272,840	4,051	0	29,218	36,442
August 2009	275,407	564,601	82,320	283,248	4,048	0	28,971	36,585
September 2009	280,138	567,815	82,612	287,783	4,073	0	28,665	36,360
October 2009	284,906	569,785	82,051	286,678	3,970	0	28,269	35,975
November 2009	291,114	570,291	83,725	273,497	3,874	0	28,039	36,007
<i>Variation October 2009 - November 2009</i>								
Number	6,208	506	1,674	-13,181	-96	0	-230	32
Per cent	2.2	0.1	2.0	-4.6	-2.4	0.0	-0.8	0.1

Notes:

- Long-term Allowees have received income support for 12 months or more.
- The method of measuring the number of people receiving labour market payments was revised in July 2002. The July 2002 publication includes revised historical data from May 1998 to June 2002.
- February 1994 data is included as it represents a peak in the number of recipients.

TABLE 2 - NEWSTART ALLOWEES - DERIVATION OF THE JOB SEEKER POPULATION

	October 2009	November 2009			Variation October - November	
		Males	Females	Persons	Number	Percent
Short-term Newstart Allowees	284,879	185,103	94,074	279,177	-5,702	-2.0
CPS recipients (a)	1,776	1,183	473	1,656	-120	-6.8
Did not receive a payment (b)	16,166	10,420	6,588	17,008	842	5.2
Received a payment	266,937	173,500	87,013	260,513	-6,424	-2.4
Voluntary/part-time work (c)	6,379	2,240	4,103	6,343	-36	-0.6
Other activities without job search (d)	39,362	25,887	15,172	41,059	1,697	4.3
Incapacitated (e)	19,448	12,557	8,425	20,982	1,534	7.9
Other/temporary exemptions (f)	16,153	9,605	6,742	16,347	194	1.2
Short-term NSA job seekers (g)	185,595	123,211	52,571	175,782	-9,813	-5.3
<i>Short-term NSA training/education (h)</i>	<i>23,066</i>	<i>15,768</i>	<i>10,378</i>	<i>26,146</i>	<i>3,080</i>	<i>13.4</i>
Long-term Newstart Allowees	284,906	167,541	123,573	291,114	6,208	2.2
CPS recipients (a)	4,428	2,956	1,316	4,272	-156	-3.5
Did not receive a payment (b)	8,558	4,728	5,176	9,904	1,346	15.7
Received a payment	271,920	159,857	117,081	276,938	5,018	1.8
Voluntary/part-time work (c)	19,013	8,138	11,397	19,535	522	2.7
Other activities without job search (d)	74,029	42,541	32,196	74,737	708	1.0
Incapacitated (e)	20,023	12,459	10,556	23,015	2,992	14.9
Other/temporary exemptions (f)	26,293	14,967	11,612	26,579	286	1.1
Long-term NSA job seekers (g)	132,562	81,752	51,320	133,072	510	0.4
<i>Long-term NSA training/education (h)</i>	<i>47,384</i>	<i>27,990</i>	<i>22,769</i>	<i>50,759</i>	<i>3,375</i>	<i>7.1</i>
All Newstart Allowees	569,785	352,644	217,647	570,291	506	0.1
CPS recipients (a)	6,204	4,139	1,789	5,928	-276	-4.4
Did not receive a payment (b)	24,724	15,148	11,764	26,912	2,188	8.8
Received a payment	538,857	333,357	204,094	537,451	-1,406	-0.3
Voluntary/part-time work (c)	25,392	10,378	15,500	25,878	486	1.9
Other activities without job search (d)	113,391	68,428	47,368	115,796	2,405	2.1
Incapacitated (e)	39,471	25,016	18,981	43,997	4,526	11.5
Other/temporary exemptions (f)	42,446	24,572	18,354	42,926	480	1.1
All NSA job seekers (g)	318,157	204,963	103,891	308,854	-9,303	-2.9
<i>All NSA training/education (h)</i>	<i>70,450</i>	<i>43,758</i>	<i>33,147</i>	<i>76,905</i>	<i>6,455</i>	<i>9.2</i>

(a) Allowees eligible for NSA who received the CDEP Participant Supplement or add ons.

(b) Allowees who did not receive a payment due to their own income and/or that of their partner or parents, where applicable. This group is often referred to as zero-paid.

(c) Allowees who are not required to seek work because they are undertaking approved full-time voluntary work or a combination of voluntary and part-time work.

(d) Allowees who are undertaking one or more other activities (which may include training or education) but not job search. This includes allowees undertaking self-employment development.

(e) Allowees who are temporarily ill or incapacitated.

(f) Other allowees who are known not to have participation requirements.

(g) Allowees who received a payment and generally are required to search for work. These allowees are classified as job seekers and form the basis of the population group in Tables 4 - 7.

(h) All allowees who are undertaking training or education which may be in conjunction with job search and/or other activities. This category is a subset of all allowees who received a payment.

Notes:

– Long-term allowees have received income support for 12 months or more.

– From July 2009, all recipients with job search requirements are classified as job seekers in this report. Prior to 1 July 2009, some people with another activity (such as training) in addition to job search were classified according to that other activity.

TABLE 3 - YOUTH ALLOWEES (OTHER) - DERIVATION OF THE JOB SEEKER POPULATION

	October 2009	November 2009			Variation October - November	
		Males	Females	Persons	Number	Percent
Short-term Youth Allowees	44,676	25,177	19,444	44,621	-55	-0.1
CPS recipients (a)	590	379	176	555	-35	-5.9
Did not receive a payment (b)	1,011	545	521	1,066	55	5.4
Received a payment	43,075	24,253	18,747	43,000	-75	-0.2
Other activities without job search (c)	7,118	4,710	3,600	8,310	1,192	16.7
Incapacitated (d)	1,683	868	974	1,842	159	9.4
Other/temporary exemptions (e)	1,926	831	1,035	1,866	-60	-3.1
Short-term YA (other) job seekers (f)	32,348	17,844	13,138	30,982	-1,366	-4.2
<i>Short-term YA (other) training/education (g)</i>	<i>5,162</i>	<i>3,150</i>	<i>2,764</i>	<i>5,914</i>	<i>752</i>	<i>14.6</i>
Long-term Youth Allowees	37,375	19,419	19,685	39,104	1,729	4.6
CPS recipients (a)	506	312	174	486	-20	-4.0
Did not receive a payment (b)	952	431	590	1,021	69	7.2
Received a payment	35,917	18,676	18,921	37,597	1,680	4.7
Other activities without job search (c)	7,717	4,250	4,145	8,395	678	8.8
Incapacitated (d)	1,296	597	840	1,437	141	10.9
Other/temporary exemptions (e)	1,452	562	860	1,422	-30	-2.1
Long-term YA (other) job seekers (f)	25,452	13,267	13,076	26,343	891	3.5
<i>Long-term YA (other) training/education (g)</i>	<i>5,917</i>	<i>3,312</i>	<i>3,355</i>	<i>6,667</i>	<i>750</i>	<i>12.7</i>
All YA Youth Allowees	82,051	44,596	39,129	83,725	1,674	2.0
CPS recipients (a)	1,096	691	350	1,041	-55	-5.0
Did not receive a payment (b)	1,963	976	1,111	2,087	124	6.3
Received a payment	78,992	42,929	37,668	80,597	1,605	2.0
Other activities without job search (c)	14,835	8,960	7,745	16,705	1,870	12.6
Incapacitated (d)	2,979	1,465	1,814	3,279	300	10.1
Other/temporary exemptions (e)	3,378	1,393	1,895	3,288	-90	-2.7
All YA (other) job seekers (f)	57,800	31,111	26,214	57,325	-475	-0.8
<i>All YA (other) training/education (g)</i>	<i>11,079</i>	<i>6,462</i>	<i>6,119</i>	<i>12,581</i>	<i>1,502</i>	<i>13.6</i>

(a) Allowees eligible for NSA who received the CDEP Participant Supplement or add ons.

(b) Allowees who did not receive a payment due to their own income and/or that of their partner or parents, where applicable. This group is often referred to as zero-paid.

(c) Allowees who are undertaking one or more other activities (which may include training or education) but not job search. This includes allowees undertaking self-employment development.

(d) Allowees who are temporarily ill or incapacitated.

(e) Other allowees who are known not to have participation requirements.

(f) Allowees who received a payment and generally are required to search for work. These allowees are classified as job seekers and form the basis of the population group in Tables 4 - 7.

(g) All allowees who are undertaking training or education which may be in conjunction with job search and/or other activities. This category is a subset of all allowees who received a payment.

Notes:

– Long-term allowees have received income support for 12 months or more.

– From July 2009, all recipients with job search requirements are classified as job seekers in this report. Prior to 1 July 2009, some people with another activity (such as training) in addition to job search were classified according to that other activity.

**TABLE 4 - JOB SEEKERS RECEIVING NEWSTART ALLOWANCE AND YOUTH ALLOWANCE (OTHER)
TIME SERIES**

	Short-term	Long-term	Total
November 2007	127,425	159,046	286,471
December 2007	132,454	169,573	302,027
January 2008	145,046	177,005	322,051
February 2008	147,610	173,316	320,926
March 2008	141,568	165,748	307,316
April 2008	139,811	160,030	299,841
May 2008	138,808	154,313	293,121
June 2008	140,066	150,517	290,583
July 2008	143,050	150,831	293,881
August 2008	141,458	146,533	287,991
September 2008	140,447	143,357	283,804
October 2008	142,254	142,368	284,622
November 2008	146,670	141,488	288,158
December 2008	163,109	154,285	317,394
January 2009	186,990	164,229	351,219
February 2009	203,173	164,752	367,925
March 2009	210,786	159,449	370,235
April 2009	221,803	157,339	379,142
May 2009	232,629	158,978	391,607
June 2009	242,074	163,434	405,508
July 2009	243,712	183,825	427,537
August 2009	233,763	165,809	399,572
September 2009	227,562	160,299	387,861
October 2009	217,943	158,014	375,957
November 2009	206,764	159,415	366,179
<i>Variation October 2009 - November 2009</i>			
Number	-11,179	1,401	-9,778
Per cent	-5.1	0.9	-2.6

NOTE: There is a break in the series between June and July 2009. Post July 2009 job seeker data is not wholly comparable with previously published data (see Explanatory Notes).

Notes:

- Long-term job seekers have received income support for 12 months or more.

**TABLE 5 - JOB SEEKERS RECEIVING NEWSTART ALLOWANCE AND YOUTH ALLOWANCE (OTHER)
BY STATE**

State	October 2009	November 2009	Variation	
			Number	Per cent
SHORT-TERM JOB SEEKERS				
New South Wales	69,530	66,167	-3,363	-4.8
Victoria	47,874	45,158	-2,716	-5.7
Queensland	52,875	50,695	-2,180	-4.1
South Australia	15,050	13,879	-1,171	-7.8
Western Australia	22,059	20,639	-1,420	-6.4
Tasmania	5,997	5,721	-276	-4.6
Northern Territory	2,880	2,912	32	1.1
Australian Capital Territory	1,678	1,593	-85	-5.1
AUSTRALIA	217,943	206,764	-11,179	-5.1
LONG-TERM JOB SEEKERS				
New South Wales	56,838	57,948	1,110	2.0
Victoria	35,742	35,734	-8	0.0
Queensland	28,543	29,146	603	2.1
South Australia	14,008	13,543	-465	-3.3
Western Australia	11,294	11,425	131	1.2
Tasmania	6,131	6,204	73	1.2
Northern Territory	4,052	4,051	-1	0.0
Australian Capital Territory	1,406	1,364	-42	-3.0
AUSTRALIA	158,014	159,415	1,401	0.9
TOTAL JOB SEEKERS				
New South Wales	126,368	124,115	-2,253	-1.8
Victoria	83,616	80,892	-2,724	-3.3
Queensland	81,418	79,841	-1,577	-1.9
South Australia	29,058	27,422	-1,636	-5.6
Western Australia	33,353	32,064	-1,289	-3.9
Tasmania	12,128	11,925	-203	-1.7
Northern Territory	6,932	6,963	31	0.4
Australian Capital Territory	3,084	2,957	-127	-4.1
AUSTRALIA	375,957	366,179	-9,778	-2.6

Notes:

– Long-term job seekers have received income support for 12 months or more.

**TABLE 6 - JOB SEEKERS RECEIVING NEWSTART ALLOWANCE AND YOUTH ALLOWANCE (OTHER)
BY AGE AND SEX, AS AT NOVEMBER 2009**

Age	Short-term job seekers		Long-term job seekers		Total job seekers	
	Number	Per Cent	Number	Per Cent	Number	Per Cent
MALES						
Less than 18 years	4,093	2.9	2,237	2.4	6,330	2.7
18 - 20 years	13,751	9.7	11,030	11.6	24,781	10.5
21 - 24 years	24,573	17.4	13,444	14.1	38,017	16.1
25 - 29 years	23,030	16.3	13,622	14.3	36,652	15.5
30 - 39 years	33,348	23.6	21,935	23.1	55,283	23.4
40 - 49 years	23,070	16.4	16,499	17.4	39,569	16.8
50 - 59 years	14,273	10.1	11,378	12.0	25,651	10.9
60 years and over	4,918	3.5	4,875	5.1	9,793	4.1
Total	141,056	100.0	95,020	100.0	236,076	100.0
FEMALES						
Less than 18 years	3,767	5.7	2,449	3.8	6,216	4.8
18 - 20 years	9,370	14.3	10,627	16.5	19,997	15.4
21 - 24 years	12,180	18.5	8,793	13.7	20,973	16.1
25 - 29 years	7,868	12.0	6,137	9.5	14,005	10.8
30 - 39 years	10,346	15.7	10,916	17.0	21,262	16.3
40 - 49 years	11,405	17.4	13,430	20.9	24,835	19.1
50 - 59 years	8,599	13.1	9,627	14.9	18,226	14.0
60 years and over	2,173	3.3	2,416	3.8	4,589	3.5
Total	65,708	100.0	64,395	100.0	130,103	100.0
PERSONS						
Less than 18 years	7,860	3.8	4,686	2.9	12,546	3.4
18 - 20 years	23,121	11.2	21,657	13.6	44,778	12.2
21 - 24 years	36,753	17.8	22,237	13.9	58,990	16.1
25 - 29 years	30,898	14.9	19,759	12.4	50,657	13.8
30 - 39 years	43,694	21.1	32,851	20.6	76,545	20.9
40 - 49 years	34,475	16.7	29,929	18.8	64,404	17.6
50 - 59 years	22,872	11.1	21,005	13.2	43,877	12.0
60 years and over	7,091	3.4	7,291	4.6	14,382	3.9
Total	206,764	100.0	159,415	100.0	366,179	100.0

Notes:

– Long-term job seekers have received income support for 12 months or more.

**TABLE 7 - JOB SEEKERS RECEIVING NEWSTART ALLOWANCE AND YOUTH ALLOWANCE (OTHER)
BY AREA SUPPORT OFFICE AND CUSTOMER SERVICE CENTRE**

<i>Area Support Office and Customer Service Centre</i>	October 2009	November 2009	Variation	
			October - November Number	Per cent
<i>SYDNEY EAST NEW SOUTH WALES</i>				
Bankstown	3,832	3,801	-31	-0.8
Bondi Junction	1,384	1,402	18	1.3
Burwood	1,807	1,748	-59	-3.3
Campsie	2,337	2,284	-53	-2.3
Caringbah	1,183	1,139	-44	-3.7
Chatswood	1,258	1,235	-23	-1.8
Corrimal	1,261	1,250	-11	-0.9
Dapto	1,383	1,407	24	1.7
Darlinghurst	1,860	1,775	-85	-4.6
Darlinghurst CCU	69	66	%	%
Hornsby	1,163	1,153	-10	-0.9
Hurstville	1,646	1,618	-28	-1.7
Lakemba	29	29	%	%
Leichhardt	1,541	1,489	-52	-3.4
Maroubra	1,531	1,498	-33	-2.2
Marrickville	1,565	1,526	-39	-2.5
Northern Beaches	1,667	1,609	-58	-3.5
Redfern	1,422	1,392	-30	-2.1
Rockdale	1,569	1,549	-20	-1.3
Ryde	1,210	1,127	-83	-6.9
Shellharbour	1,652	1,684	32	1.9
Sutherland	728	754	26	3.6
Wollongong	1,423	1,418	-5	-0.4
Other (a)	16	22	%	%
Total	33,536	32,975	-561	-1.7

– Note: For footnotes see end of table.

**TABLE 7 - JOB SEEKERS RECEIVING NEWSTART ALLOWANCE AND YOUTH ALLOWANCE (OTHER)
BY AREA SUPPORT OFFICE AND CUSTOMER SERVICE CENTRE**

<i>Area Support Office and Customer Service Centre</i>	October 2009	November 2009	Variation	
			October - November Number	Per cent
<i>SYDNEY WEST NEW SOUTH WALES</i>				
Auburn	2,143	2,096	-47	-2.2
Baulkham Hills	946	978	32	3.4
Blacktown	3,464	3,277	-187	-5.4
Cabramatta	2,165	2,136	-29	-1.3
Camden	718	688	-30	-4.2
Campbelltown	2,309	2,290	-19	-0.8
Fairfield	3,230	3,127	-103	-3.2
Hawkesbury	979	955	-24	-2.5
Ingleburn	1,489	1,419	-70	-4.7
Katoomba	776	742	-34	-4.4
Liverpool	4,036	3,831	-205	-5.1
Merrylands	1,998	2,002	4	0.2
Mt Druitt	2,971	2,908	-63	-2.1
Parramatta	2,311	2,250	-61	-2.6
Penrith	1,975	1,823	-152	-7.7
Springwood	378	353	-25	-6.6
St Marys	1,692	1,657	-35	-2.1
Other (a)	16	15	%	%
Total	33,596	32,547	-1,049	-3.1

– Note: For footnotes see end of table.

**TABLE 7 - JOB SEEKERS RECEIVING NEWSTART ALLOWANCE AND YOUTH ALLOWANCE (OTHER)
BY AREA SUPPORT OFFICE AND CUSTOMER SERVICE CENTRE**

<i>Area Support Office and Customer Service Centre</i>	October 2009	November 2009	Variation	
			October - November Number	Per cent
<i>HUNTER NEW SOUTH WALES</i>				
Armidale	776	837	61	7.9
Cessnock	754	748	-6	-0.8
Charlestown	2,016	1,988	-28	-1.4
Comm Support Team	47	50	%	%
Ettalong	773	771	-2	-0.3
Forster	890	911	21	2.4
Glen Innes	281	277	-4	-1.4
Gosford	1,709	1,694	-15	-0.9
Gunnedah	419	412	-7	-1.7
Inverell	653	668	15	2.3
Kempsey	949	943	-6	-0.6
King Street	1,230	1,245	15	1.2
Kurri Kurri	457	451	-6	-1.3
Lakehaven	1,708	1,658	-50	-2.9
Maitland	1,576	1,540	-36	-2.3
Mayfield	839	842	3	0.4
Muswellbrook	553	543	-10	-1.8
Nambucca Heads	726	718	-8	-1.1
Nelson Bay	529	517	-12	-2.3
Port Macquarie	1,639	1,583	-56	-3.4
Raymond Terrace	1,147	1,125	-22	-1.9
Singleton	286	286	0	0.0
Tamworth	1,589	1,604	15	0.9
Taree	1,718	1,684	-34	-2.0
The Entrance	1,361	1,348	-13	-1.0
Toronto	996	950	-46	-4.6
Wallsend	1,454	1,395	-59	-4.1
Woy Woy	477	487	10	2.1
Wyong	755	774	19	2.5
Other (a)	16	18	%	%
Total	28,323	28,067	-256	-0.9

– Note: For footnotes see end of table.

**TABLE 7 - JOB SEEKERS RECEIVING NEWSTART ALLOWANCE AND YOUTH ALLOWANCE (OTHER)
BY AREA SUPPORT OFFICE AND CUSTOMER SERVICE CENTRE**

<i>Area Support Office and Customer Service Centre</i>	October 2009	November 2009	Variation	
			October - November Number	Per cent
<i>SOUTH WEST NEW SOUTH WALES</i>				
Batemans Bay	774	731	-43	-5.6
Bathurst	859	850	-9	-1.0
Bega	665	652	-13	-2.0
Belconnen	960	887	-73	-7.6
Bowral	531	510	-21	-4.0
Braddon	815	807	-8	-1.0
Cooma	348	341	-7	-2.0
Cowra	461	485	24	5.2
Dubbo	1,986	1,999	13	0.7
Goulburn	571	560	-11	-1.9
Griffith	649	661	12	1.8
Gungahlin	92	104	12	%
Lanyon	27	28	%	%
Leeton	396	389	-7	-1.8
Lithgow	533	511	-22	-4.1
Mudgee	564	557	-7	-1.2
Narooma	347	348	1	0.3
Nowra	2,063	2,063	0	0.0
Orange	969	1,000	31	3.2
Parkes	942	930	-12	-1.3
Queanbeyan	418	399	-19	-4.5
Tuggeranong	693	658	-35	-5.1
Tumut	301	302	1	0.3
Ulladulla	493	484	-9	-1.8
Wagga	1,423	1,383	-40	-2.8
Woden	459	437	-22	-4.8
Yass	89	91	%	%
Young	420	444	24	5.7
Other (a)	10	13	%	%
Total	18,858	18,624	-234	-1.2

– Note: For footnotes see end of table.

**TABLE 7 - JOB SEEKERS RECEIVING NEWSTART ALLOWANCE AND YOUTH ALLOWANCE (OTHER)
BY AREA SUPPORT OFFICE AND CUSTOMER SERVICE CENTRE**

<i>Area Support Office and Customer Service Centre</i>	October 2009	November 2009	Variation	
			October - November Number	Per cent
<i>NORTH CENTRAL VICTORIA</i>				
Airport West	1,060	1,051	-9	-0.8
Albury	2,161	2,142	-19	-0.9
Box Hill	1,878	1,815	-63	-3.4
Broadmeadows	3,625	3,452	-173	-4.8
Camberwell	828	819	-9	-1.1
Darebin	2,814	2,675	-139	-4.9
Deniliquin	323	309	-14	-4.3
Echuca	508	498	-10	-2.0
Epping	1,913	1,839	-74	-3.9
Heidelberg	1,697	1,648	-49	-2.9
Moreland	2,144	2,111	-33	-1.5
Newmarket	1,373	1,349	-24	-1.7
Seymour	604	566	-38	-6.3
Shepparton	1,965	1,980	15	0.8
Sth Melbourne	717	702	-15	-2.1
Sunbury	775	762	-13	-1.7
Wangaratta	1,297	1,288	-9	-0.7
Windsor Vic	2,251	2,197	-54	-2.4
Yarra	1,758	1,723	-35	-2.0
Other (a)	15	14	%	%
Total	29,706	28,940	-766	-2.6

– Note: For footnotes see end of table.

**TABLE 7 - JOB SEEKERS RECEIVING NEWSTART ALLOWANCE AND YOUTH ALLOWANCE (OTHER)
BY AREA SUPPORT OFFICE AND CUSTOMER SERVICE CENTRE**

<i>Area Support Office and Customer Service Centre</i>	October 2009	November 2009	Variation	
			October - November Number	Per cent
<i>SOUTH EAST VICTORIA</i>				
Bairnsdale	822	772	-50	-6.1
Belgrave	482	477	-5	-1.0
Cheltenham	1,651	1,637	-14	-0.8
Cranbourne	1,370	1,311	-59	-4.3
Dandenong	2,398	2,327	-71	-3.0
Fountain Gate	2,000	1,904	-96	-4.8
Frankston	2,550	2,470	-80	-3.1
Glen Waverley	1,090	1,020	-70	-6.4
Hastings	550	523	-27	-4.9
Lilydale	1,408	1,290	-118	-8.4
Mornington	440	425	-15	-3.4
Morwell	2,294	2,213	-81	-3.5
Oakleigh	1,696	1,602	-94	-5.5
Pakenham	672	665	-7	-1.0
Ringwood	1,812	1,644	-168	-9.3
Rosebud	842	807	-35	-4.2
Rowville	475	445	-30	-6.3
Sale	762	740	-22	-2.9
Springvale	1,977	1,911	-66	-3.3
Wantirna	1,212	1,162	-50	-4.1
Warragul	561	518	-43	-7.7
Wonthaggi	570	540	-30	-5.3
Other (a)	4	10	%	%
Total	27,638	26,413	-1,225	-4.4

– Note: For footnotes see end of table.

**TABLE 7 - JOB SEEKERS RECEIVING NEWSTART ALLOWANCE AND YOUTH ALLOWANCE (OTHER)
BY AREA SUPPORT OFFICE AND CUSTOMER SERVICE CENTRE**

<i>Area Support Office and Customer Service Centre</i>	October 2009	November 2009	Variation	
			October - November Number	Per cent
WEST VICTORIA				
Ararat	218	209	-9	-4.1
Bendigo Central	407	395	-12	-2.9
Ballarat	2,627	2,510	-117	-4.5
Bendigo	2,284	2,248	-36	-1.6
Colac	498	483	-15	-3.0
Corio	1,538	1,495	-43	-2.8
Footscray	1,334	1,343	9	0.7
Geelong	2,725	2,636	-89	-3.3
Hamilton	338	329	-9	-2.7
Horsham	590	578	-12	-2.0
Maryborough	427	420	-7	-1.6
Melton	1,384	1,380	-4	-0.3
Mildura	1,750	1,741	-9	-0.5
Newport	1,076	1,041	-35	-3.3
Portland	422	391	-31	-7.3
Stawell	197	180	-17	-8.6
Sunshine	2,700	2,606	-94	-3.5
Swan Hill	854	825	-29	-3.4
Warrnambool	747	730	-17	-2.3
Watergardens	3,207	3,081	-126	-3.9
Werribee	3,024	2,952	-72	-2.4
Other (a)	20	25	%	%
Total	28,367	27,598	-769	-2.7

– Note: For footnotes see end of table.

**TABLE 7 - JOB SEEKERS RECEIVING NEWSTART ALLOWANCE AND YOUTH ALLOWANCE (OTHER)
BY AREA SUPPORT OFFICE AND CUSTOMER SERVICE CENTRE**

<i>Area Support Office and Customer Service Centre</i>	October 2009	November 2009	Variation	
			October - November Number	Per cent
<i>CENTRAL & NORTHERN QUEENSLAND</i>				
Atherton	746	789	43	5.8
Ayr	324	334	10	3.1
Biloela	173	159	-14	-8.1
Bowen	289	327	38	13.1
Cairns Ems	4,315	4,251	-64	-1.5
Charters Towers	366	364	-2	-0.5
Emerald	309	323	14	4.5
Gladstone	1,096	1,083	-13	-1.2
Indigenous Service Centre	803	810	7	0.9
Ingham	262	272	10	3.8
Innisfail	810	866	56	6.9
Longreach	90	87	%	%
Mackay Employment	1,371	1,405	34	2.5
Mareeba	707	644	-63	-8.9
Mossman	513	521	8	1.6
Mt Isa	783	749	-34	-4.3
Normanton	106	102	-4	-3.8
Nth Peninsula Remote Area Service Centre	43	57	%	%
Palm Island	181	167	-14	-7.7
Rockhampton	2,022	1,993	-29	-1.4
Students Area CNQ	42	67	%	%
Thursday Is	243	253	10	4.1
Townsville	3,244	3,266	22	0.7
Western Cape Remote Area Service Centre	290	307	17	5.9
Whitsunday	453	446	-7	-1.5
Yarrabah Remote Area Service Centre	515	508	-7	-1.4
Yeppoon	448	450	2	0.4
Other (a)	62	64	%	%
Total	20,606	20,664	58	0.3

– Note: For footnotes see end of table.

**TABLE 7 - JOB SEEKERS RECEIVING NEWSTART ALLOWANCE AND YOUTH ALLOWANCE (OTHER)
BY AREA SUPPORT OFFICE AND CUSTOMER SERVICE CENTRE**

<i>Area Support Office and Customer Service Centre</i>	October 2009	November 2009	Variation	
			October - November Number	Per cent
<i>SOUTH & EAST QUEENSLAND</i>				
Bundaberg	2,865	2,837	-28	-1.0
Caboolture	2,621	2,598	-23	-0.9
Caloundra	1,350	1,287	-63	-4.7
Cherbourg	223	238	15	6.7
Chermside	1,143	1,126	-17	-1.5
Deception Bay	643	643	0	0.0
Fortitude Valley	1,160	1,147	-13	-1.1
Gympie	1,215	1,139	-76	-6.3
Hervey Bay	1,629	1,605	-24	-1.5
Kawana Waters	634	587	-47	-7.4
Kingaroy	650	611	-39	-6.0
Kippa-ring	1,199	1,150	-49	-4.1
Maroochydore	1,671	1,623	-48	-2.9
Maryborough	1,221	1,154	-67	-5.5
Mitchelton	1,130	1,092	-38	-3.4
Nambour	1,082	1,073	-9	-0.8
Noosa	1,075	1,050	-25	-2.3
Nundah	1,179	1,197	18	1.5
Strathpine	1,547	1,455	-92	-5.9
Toowong	920	903	-17	-1.8
Other (a)	6	6	%	%
Total	25,163	24,521	-642	-2.6

– Note: For footnotes see end of table.

**TABLE 7 - JOB SEEKERS RECEIVING NEWSTART ALLOWANCE AND YOUTH ALLOWANCE (OTHER)
BY AREA SUPPORT OFFICE AND CUSTOMER SERVICE CENTRE**

<i>Area Support Office and Customer Service Centre</i>	October 2009	November 2009	Variation	
			October - November Number	Per cent
<i>SOUTH & WEST QUEENSLAND</i>				
Beenleigh	2,309	2,248	-61	-2.6
Browns Plains	1,891	1,827	-64	-3.4
Capalaba	779	797	18	2.3
Charleville	213	202	-11	-5.2
Cleveland	944	927	-17	-1.8
Dalby	516	483	-33	-6.4
Goodna	1,650	1,631	-19	-1.2
Goondiwindi	344	331	-13	-3.8
Inala	1,816	1,745	-71	-3.9
Ipswich	2,602	2,559	-43	-1.7
Mt Gravatt	1,996	2,007	11	0.6
Roma	162	150	-12	-7.4
South Brisbane	934	915	-19	-2.0
Stanthorpe	399	455	56	14.0
Stones Corner	1,701	1,637	-64	-3.8
Toowoomba	2,452	2,393	-59	-2.4
Warwick	447	455	8	1.8
Woodridge	2,177	2,062	-115	-5.3
Wynnum	1,009	968	-41	-4.1
Other (a)	9	9	%	%
Total	24,350	23,801	-549	-2.3

– Note: For footnotes see end of table.

**TABLE 7 - JOB SEEKERS RECEIVING NEWSTART ALLOWANCE AND YOUTH ALLOWANCE (OTHER)
BY AREA SUPPORT OFFICE AND CUSTOMER SERVICE CENTRE**

<i>Area Support Office and Customer Service Centre</i>	October 2009	November 2009	Variation	
			October - November Number	Per cent
SOUTH AUSTRALIA				
Berri	895	858	-37	-4.1
Broken Hill	806	775	-31	-3.8
Ceduna	280	276	-4	-1.4
Cooper Pedy	157	163	6	3.8
Elizabeth	2,445	2,269	-176	-7.2
Enfield	1,520	1,397	-123	-8.1
Gawler	1,125	1,072	-53	-4.7
Glenelg	802	740	-62	-7.7
Kadina	630	595	-35	-5.6
Kilkenny	1,536	1,460	-76	-4.9
Marion	2,099	2,002	-97	-4.6
Modbury	1,619	1,535	-84	-5.2
Mt Barker	572	538	-34	-5.9
Mt Gambier	1,227	1,131	-96	-7.8
Murray Bridge	756	757	1	0.1
Noarlunga	2,585	2,362	-223	-8.6
Norwood	1,722	1,656	-66	-3.8
Port Adelaide	1,435	1,331	-104	-7.2
Port Augusta	712	692	-20	-2.8
Port Lincoln	580	561	-19	-3.3
Port Pirie	904	838	-66	-7.3
Salisbury	2,514	2,354	-160	-6.4
Torrens ville	1,343	1,289	-54	-4.0
Victor Harbor	657	601	-56	-8.5
Whyalla	819	800	-19	-2.3
Other (a)	24	28	%	%
Total	29,764	28,080	-1,684	-5.7

– Note: For footnotes see end of table.

**TABLE 7 - JOB SEEKERS RECEIVING NEWSTART ALLOWANCE AND YOUTH ALLOWANCE (OTHER)
BY AREA SUPPORT OFFICE AND CUSTOMER SERVICE CENTRE**

<i>Area Support Office and Customer Service Centre</i>	October 2009	November 2009	Variation	
			October - November Number	Per cent
WEST AUSTRALIA				
Albany	971	909	-62	-6.4
Armadale	1,378	1,319	-59	-4.3
Bunbury	1,929	1,807	-122	-6.3
Busselton	719	675	-44	-6.1
Cannington	1,937	1,875	-62	-3.2
Carnarvon	270	269	-1	-0.4
Cocos Islands	31	25	%	%
Community Team	52	53	%	%
Esperance	282	267	-15	-5.3
Fremantle	1,521	1,467	-54	-3.6
Geraldton	1,313	1,261	-52	-4.0
Gosnells	1,312	1,309	-3	-0.2
Innaloo	1,503	1,420	-83	-5.5
Joondalup	1,922	1,837	-85	-4.4
Kalgoorlie	803	821	18	2.2
Karratha	303	313	10	3.3
Laverton Remote Area Service Centre	63	68	%	%
Mandurah	1,595	1,531	-64	-4.0
Meekatharra	173	172	-1	-0.6
Midland	2,505	2,274	-231	-9.2
Mirrabooka	2,074	1,927	-147	-7.1
Morley	2,029	1,928	-101	-5.0
Newman Remote Area Service Centre	139	130	-9	-6.5
Northam	584	553	-31	-5.3
Rockingham	2,081	2,014	-67	-3.2
South Hedland	391	405	14	3.6
Spearwood	1,273	1,244	-29	-2.3
Victoria Park	2,030	2,023	-7	-0.3
Warwick Grove	976	893	-83	-8.5
Other (a)	78	90	%	%
Total	32,237	30,879	-1,358	-4.2

– Note: For footnotes see end of table.

**TABLE 7 - JOB SEEKERS RECEIVING NEWSTART ALLOWANCE AND YOUTH ALLOWANCE (OTHER)
BY AREA SUPPORT OFFICE AND CUSTOMER SERVICE CENTRE**

<i>Area Support Office and Customer Service Centre</i>	October 2009	November 2009	Variation	
			October - November Number	Per cent
TASMANIA				
Bridgewater	754	776	22	2.9
Burnie	1,620	1,561	-59	-3.6
Devonport	1,614	1,557	-57	-3.5
Glenorchy	1,545	1,494	-51	-3.3
Hobart	1,259	1,274	15	1.2
Huonville	405	422	17	4.2
Launceston	3,352	3,326	-26	-0.8
Rosny Park	959	919	-40	-4.2
Sorell	564	538	-26	-4.6
Other (a)	34	38	4	%
Total	12,106	11,905	-201	-1.7
NORTH AUSTRALIA				
Alice Springs	2,156	1,680	-476	-22.1
Borrooloola	25	35	10	%
Broome	503	525	22	4.4
Casuarina	828	800	-28	-3.4
Central Australia RST	..	462
Derby	143	143	0	0.0
Fitzroy Crossing	48	55	%	%
Halls Creek	174	190	16	9.2
Katherine	921	812	-109	-11.8
Knuckey Street	421	408	-13	-3.1
Kununurra	274	290	16	5.8
Maningrida	225	239	14	6.2
Nhulunbuy	289	220	-69	-23.9
North Australia	616	446	-170	-27.6
Palmerston	816	790	-26	-3.2
Tangentyere	42	51	%	%
Tennant Ck Remote	54	28	%	%
Tennant Creek	197	193	-4	-2.0
Tiwi Islands	145	147	2	1.4
Top End Hub	..	445
Wadeye	177	199	22	12.4
Yuendumu	58	56	%	%
Other (a)	21	21	%	%
Total	8,133	8,235	102	1.3

-- Note: For footnotes see end of table.

**TABLE 7 - JOB SEEKERS RECEIVING NEWSTART ALLOWANCE AND YOUTH ALLOWANCE (OTHER)
BY AREA SUPPORT OFFICE AND CUSTOMER SERVICE CENTRE**

<i>Area Support Office and Customer Service Centre</i>	October 2009	November 2009	Variation	
			October - November Number	Per cent
<i>PACIFIC CENTRAL</i>				
APC Community Team	43	40	%	%
Ballina	908	913	5	0.6
Beaudesert	570	553	-17	-3.0
Biggera Waters	2,563	2,450	-113	-4.4
Bourke	495	476	-19	-3.8
Brunswick Heads	618	590	-28	-4.5
Byron Bay	591	583	-8	-1.4
Casino	631	614	-17	-2.7
Coffs Harbour	2,229	2,194	-35	-1.6
Grafton	1,400	1,345	-55	-3.9
Lightning Ridge	161	179	18	11.2
Lismore	1,624	1,592	-32	-2.0
Moree	510	516	6	1.2
Murwillumbah	612	592	-20	-3.3
Narrabri	304	296	-8	-2.6
Nerang	2,525	2,453	-72	-2.9
Palm Beach	2,884	2,788	-96	-3.3
Southport	2,890	2,809	-81	-2.8
Tweed Heads	1,771	1,737	-34	-1.9
Walgett	226	227	1	0.4
Other (a)	16	22	%	%
Total	23,571	22,969	-602	-2.6
<i>OTHER</i>				
Centrelink Call Centres	3	3	%	%
Not Coded To An Area	6	8	%	%
Rounding Adjustment	-6	-50	%	%
<i>AUSTRALIA</i>	375,957	366,179	-9,778	-2.6

(a) Job seekers who are not allocated to any of the reported offices.

Notes:

- Variations for Customer Service Centres with small populations (less than 100) are displayed as % and not reported.
- Data in this table are rounded monthly averages.
- Area Support Office boundaries changed from July 2007. The July 2007 edition of this publication includes a description of the changes.
- The rounding adjustment was included prior to the July 2007 publication, in the Fairfield Customer Service Centre.

**TABLE 8 - JOB SEEKERS RECEIVING NEWSTART ALLOWANCE AND YOUTH ALLOWANCE (OTHER)
FORTNIGHTLY EARNINGS (%) AND SEX, FORTNIGHT ENDING 20 NOVEMBER 2009**

<i>Fortnightly Earnings</i>	Short-term job seekers	Long-term job seekers	Total job seekers
MALES			
Did not earn an income	85.8	84.4	85.2
Earned an income	14.2	15.6	14.8
Amount earned			
\$0.01 - \$62.00	0.6	0.6	0.6
\$62.01 - \$142.00	1.8	2.1	1.9
\$142.01 - \$236.00	2.3	2.6	2.4
\$236.01 - \$316.00	1.7	1.9	1.8
Over \$316.00	7.9	8.3	8.1
Total	100.0	100.0	100.0
<i>Job seekers receiving NSA and YA (other)</i>	140,613	95,232	235,845
FEMALES			
Did not earn an income	76.0	74.4	75.2
Earned an income	24.0	25.6	24.8
Amount earned			
\$0.01 - \$62.00	0.8	1.0	0.9
\$62.01 - \$142.00	2.8	2.7	2.7
\$142.01 - \$236.00	3.6	3.6	3.6
\$236.01 - \$316.00	2.8	2.9	2.9
Over \$316.00	14.1	15.3	14.7
Total	100.0	100.0	100.0
<i>Job seekers receiving NSA and YA (other)</i>	65,702	64,499	130,201
PERSONS			
Did not earn an income	82.7	80.4	81.7
Earned an income	17.3	19.6	18.3
Amount earned			
\$0.01 - \$62.00	0.6	0.8	0.7
\$62.01 - \$142.00	2.1	2.4	2.2
\$142.01 - \$236.00	2.7	3.0	2.8
\$236.01 - \$316.00	2.0	2.3	2.2
Over \$316.00	9.9	11.2	10.4
Total	100.0	100.0	100.0
<i>Job seekers receiving NSA and YA (other)</i>	206,315	159,731	366,046

Notes:

EXPLANATORY NOTES

Introduction

This publication provides monthly statistical information on DEEWR labour market and related payments delivered by Centrelink. These Explanatory Notes provide details of the scope and methodology of the publication, as well as the policy changes which have affected the data since the publication was introduced in December 1995 by the then Department of Social Security.

Prior to December 1995, this publication was titled the *Monthly Job Search and Newstart Allowance Statistics*.

Scope

The primary focus of the publication is to provide information on unemployed people on Newstart Allowance and Youth Allowance, with a particular focus on the total number of job seekers. The numbers of people on Mature Age Allowance, Partner Allowance and Widow Allowance are also reported.

Methodology

Data in this publication relate to the average number of people who are both eligible (eg. meet 'unemployed' qualification) and entitled (eg. meet income and assets criteria) to receive a payment calculated over a reference month. Averages are calculated using figures collected for each Friday throughout the reference month.

Table 1 provides information on the total number of unemployed people on Newstart Allowance and Youth Allowance. The Youth Allowance population is split into Youth Allowance (full-time students), Youth Allowance (Australian Apprentices) and Youth Allowance (other) categories. Numbers of people on Mature Age Allowance, Partner Allowance and Widow Allowance are also provided.

Tables 2 and 3 provide a summary of the Newstart Allowance and Youth Allowance (other) populations and show the derivation of the respective job seeker populations (see the reference to job seekers in the Comparability of Data section of these Explanatory Notes). These populations are added together to derive the total number of job seekers. Tables 4 to 8 provide information on the total job seeker population.

The earnings data in Table 8 is derived using a different methodology from that of the other tables in the publication. Table 8 is based on the combined population of job seekers who are eligible for and entitled to receive Newstart Allowance or Youth Allowance (other) at the end of the second last week in the month. The data obtained from this table will not be directly comparable with those calculated using monthly averages in other tables.

Payment History

Youth Allowance

From 1 July 2009 young people under 21 years of age without a Year 12 or equivalent qualification will usually need to:

- participate in education and training full-time; or
- participate full-time (that is, for at least 25 hours a week) in part-time study or training, in combination with other approved activities, until they attain Year 12 or an equivalent Certificate Level II or above qualification.

Job seekers already in receipt of Youth Allowance before 1 July 2009 who do not have Year 12 or an equivalent qualification will transition to the new requirements between 1 January 2010 and 30 June 2010.

From 1 July 1998 Youth Allowance was introduced to provide income support to young people, including students, those looking for work, and those who are sick. Youth Allowees may be undertaking full-time study, full-time job search or a combination of approved activities. Some young people will be exempt from the activity test because of their personal circumstances, eg. illness, homelessness or major personal crisis. The Youth Allowance replaced:

- AUSTUDY for 16-24 year olds (and certain 15 year olds);
- Newstart Allowance for 16-20 year olds (and certain 15 year olds);
- Youth Training Allowance for 16-17 year olds (and certain 15 year olds);
- Sickness Allowance for 16-20 year olds (and certain 15 year olds); and
- More-than-minimum rate Family Payment for secondary students aged 16-18 not getting AUSTUDY.

Youth Allowance recipients are subject to the parental means test. Under previous arrangements, unemployed people aged 18 to 20 were not subject to the parental means test, unlike 18 to 20 year old students.

Special provisions applied for 18 to 20 year olds who were already on Newstart or Sickness Allowance at the date of announcement of Youth Allowance, and who remained on payment when Youth Allowance commenced on 1 July 1998. This group were able to remain on their existing payment and retain their existing benefits.

Youth Allowance had a significant downward effect on Newstart Allowance numbers from July 1998 and total job seeker numbers due to the parental means test.

Newstart Allowance

From 1 July 1998, Newstart Allowance for 16-20 year olds (and certain 15 year olds) was replaced by Youth Allowance. Young people aged 18 to 20 years old who were on Newstart or Sickness Allowance at the date of announcement of Youth Allowance and when Youth Allowance commenced on 1 July 1998, were able to remain on Newstart Allowance.

From 20 October 1996, Job Search Allowance and Newstart Allowance were combined into one payment - Newstart Allowance - which was payable to eligible recipients aged 18 years and over and to some people who were in receipt of Job Search Allowance and aged under 18 at 31 December 1994 (see Job Search Allowance).

Prior to 20 October 1996, Newstart Allowance was payable to eligible persons over 18 years who had been registered as unemployed with the Commonwealth Employment Service (CES) for 12 months or more.

Job Search Allowance

From 20 October 1996, the payment was combined with Newstart Allowance to form one payment called Newstart Allowance (see *Newstart Allowance*). All Job Search Allowance recipients were transferred to Newstart Allowance.

Prior to 20 October 1996, Job Search Allowance was payable to eligible persons who had been registered as unemployed with the CES for up to 12 months. It was also payable to eligible persons who were in receipt of Job Search Allowance and under 18 years of age at 31 December 1994. Persons aged 15 to 18 years who were not receiving Job Search Allowance prior to 1 January 1995 commenced on Youth Training Allowance.

Sickness Allowance

From 17 March 1996, persons in receipt of Newstart Allowance or Youth Training Allowance who became temporarily incapacitated no longer transferred to Sickness Allowance after 13 weeks. This change had the effect of increasing total Newstart Allowance/Youth Training Allowance figures but did not affect job seeker figures as those recipients who were incapacitated were excluded from the Newstart and Youth Training job seeker populations.

Under current arrangements, these recipients remain on their existing payments but are exempt from the activity test for the duration of their medical certificates. People who become unemployed because of illness, and those who suffer a potential loss of income due to sickness, are paid Newstart Allowance because they are unemployed.

Sickness Allowance for 16 to 20 year olds (and certain 15 year olds) was replaced by Youth Allowance, which was introduced on 1 July 1998 (see *Youth Allowance*).

Partner Allowance

From 20 October 2003, Partner Allowance was closed to new claimants. People on Partner Allowance before this date can remain on the allowance while they remain 'current', that is retain eligibility and entitlement for the allowance.

From 1 July 1995 Partner Allowance has only been granted to persons who are dependent partners of pensioners and allowees and who were born before 1 July 1955, have no dependent children and have little or no recent workforce experience. Other dependent partners have to qualify for an income support payment in their own right, such as Newstart Allowance.

Partner Allowance was introduced in October 1994, and was paid to partners of persons receiving Job Search Allowance, Newstart Allowance, Sickness Allowance or Special Benefit if certain eligibility criteria were satisfied.

Youth Training Allowance

Youth Training Allowance was replaced by Youth Allowance on 1 July 1998 (see *Youth Allowance*).

From 1 January 1995, eligible persons aged under 18 years who were new entrants to the job search pool were paid Youth Training Allowance. (People who were in receipt of Job Search Allowance and aged under 18 years at 31 December 1994 continued to be paid Job Search Allowance. From 20 October 1996, those young persons still being paid Job Search Allowance were transferred to Newstart Allowance.)

Widow Allowance

From 1 July 2005 Widow Allowance new grants may only be made to women born on or before 1 July 1955.

Widow Allowance, introduced on 1 January 1995, is payable to females aged 50 years or over who have become widowed, divorced or separated since turning 40 years (50 prior to 20 March 1997), if they meet a number of other criteria relating to current marital status and recent work experience.

Mature Age Allowance

From 20 October 2003, Mature Age Allowance was closed to new claimants. The payment ceased by October 2008 .

From 1 July 1996, the qualification conditions for Mature Age Allowance changed for new claimants. The requirement for 12 months prior receipt of income support was reduced to 9 months for people transferring from Newstart Allowance and removed entirely for people transferring from non-activity tested payments. The requirement to have been registered as unemployed for 9 months was replaced with a requirement to have no recent workforce experience. Reporting of these new claimants commenced from October 1996.

Mature Age Allowance was introduced on 24 March 1994, and was paid to long-term unemployed persons aged 60 years and over (but below Age Pension age) who had been receiving income support for 9 months or more and who were eligible for Newstart Allowance. The introduction of Mature Age Allowance had a downwards effect on Newstart Allowance numbers from April 1994 until October 2003.

Comparability of Data

There have been significant changes to the data presented in this publication due to a number of events. The main changes are:

- the method of counting recipients;
- the inclusion of some CDEP recipients in the total recipient numbers;
- the introduction of Youth Allowance in July 1998;
- the way 'job seeker' is defined; and
- the way duration is calculated.

People using this data to construct time series should note the following comments.

Definition of Recipients From July 2002, the number of people receiving labour market and related payments reports recipients who are both eligible and entitled to receive a payment. These recipients are otherwise known as ‘current’ recipients.

Revised historical data (using this methodology) from May 1998 to June 2002 is in the July 2002 publication.

Due to improved data sources, data from July 2003 has slight differences from the recipient numbers used in previous editions.

Before July 2002, all recipients who received a payment within a given fortnight were counted. From mid 1998, recipients who received a ‘one-off’ payment were excluded. One-off payments can occur, for instance, when a normal payment is interrupted (eg. payment is cancelled and then restored within that pay period) and a portion of the normal payment is paid.

Community Development Employment Projects (CDEP) From 20 March 2000, eligible participants in CDEP started receiving CDEP participant supplement and other add-ons, such as rent assistance, as part of income support payments. This added a number of new recipients to those eligible for payments reported in this publication.

Introduction of Youth Allowance The sum of the number of Newstart Allowees and Youth Training Allowees prior to July 1998 is broadly comparable with the sum of Newstart Allowees and Youth Allowees (other) after July 1998, other than the inclusion of Sickness Allowees in the Youth Allowance (other) population.

There is greater comparability between total Newstart Allowance and Youth Training Allowance job seekers prior to July 1998 and total Newstart Allowance and Youth Allowance (other) job seekers after July 1998. This is because the Sickness Allowance group is excluded from the job seeker total.

A pre and post July 1998 comparison will reflect the exclusion of some 18 to 20 year old unemployed people due to the application of the Youth Allowance parental means test (see the *Youth Allowance* section under Payment History).

Job seekers From July 2009, all recipients with job search requirements are classified as job seekers in this report.

Prior to 1 July 2009, some people with another activity (such as training) in addition to job search were classified according to that other activity and not as job seekers. Other people who were receiving Intensive Support Customised Assistance under Job Network arrangements were classified as job seekers although they may not always have been undertaking job search.

From July 1998, the definition of job seekers excludes all people

who did not receive a payment due to their own and/or their partner's income, or where applicable, parental income, and all those known not to be required to search for work.

Before July 1998, job seekers excluded allowees who did not receive a payment, allowees who were incapacitated, and allowees who were undertaking training. Some people who were not required to search for work were classified as job seekers, including people undertaking full-time voluntary work, people on jury duty and pregnant women around the time of the birth of their child.

Duration

Since May 1998, duration has been defined according to the time a recipient spends on income support - short-term recipients are those who have been on income support for up to 12 months and long-term recipients are those who have been on income support for 12 months or more.

Prior to 1998, duration was defined according to the time a recipient was registered as unemployed - short-term recipients were people who were registered as unemployed for up to 12 months and long-term recipients were people who were registered for 12 months or more.

Closure of Mature Age and Partner Allowances

From 20 October 2003, Mature Age Allowance and Partner Allowance were closed to new claimants. and payments of Mature Age Allowance ceased in October 2008. People on these allowances before 20 October 2003 can remain on that allowance while they remain 'current', that is retain eligibility and entitlement for the allowance. The majority of people who would previously have claimed these payments will now claim Newstart Allowance.

Symbols

n.a. not available
.. not applicable

GLOSSARY

Activity test status	The activity that a Newstart Allowance or Youth Allowance (other) recipient has agreed to undertake in order to meet the activity test. To satisfy the activity test recipients must be actively seeking and willing to take up work or undertaking activities to improve their employment prospects.
Age	Age in years at time of data collection.
Area Support Office	A Centrelink office that supports a set of Customer Service Centres for a specified area. These are generally not confined to State boundaries.
Community Development Employment Projects (CDEP)	The CDEP program is administered by the Department of Families, Housing, Community Services and Indigenous Affairs. Reforms to CDEP were introduced from 1 July 2009. Operating mainly in remote areas, the CDEP program aims to help unemployed Indigenous Australians to find and keep jobs. Under the CDEP program, there are two main ways ('streams') that CDEP providers assist Indigenous Australians: Work Readiness Services help individuals to develop their skills, improve their chances of getting a job, and move to work outside of the CDEP program; and Community Development focuses on supporting and developing Indigenous communities and organisations.
CDEP Participant Supplement (CPS)	The CDEP Participant Supplement (CPS) is payable to eligible CDEP participants. It can be paid fortnightly or as a 12 weekly payment.
Customer Service Centre	A Customer Service Centre set within a particular region that provides FaHCSIA, DEEWR and other payments and related information and services to recipients. Customer Service Centres are managed by Area Support Offices.
Did not receive a payment	Persons who did not receive a payment due to their own income and/or that of their partner, or parents, where applicable. This group is often referred to as 'zero paid'.
Fortnightly earnings	Amount of income earned, derived, or received by a person for the person's own use or benefit in the previous fortnight.
Incapacitated	A person on Newstart Allowance or Youth Allowance (other) who has an activity test status indicating they are temporarily ill or incapacitated. Refer to the entry for Sickness Allowance in the Explanatory Notes.
Job seeker	A person on Newstart Allowance or Youth Allowance (other) who would usually be engaged in job search. See Explanatory Notes for definition and history.
Job Search Allowance (JSA)	Up to 20 October 1996, Job Search Allowance was payable to eligible persons who had been registered as unemployed with the Commonwealth Employment Service for up to 12 months. From 20 October 1996, the payment was combined with Newstart Allowance. See Explanatory Notes for history.

Long-term recipients	Persons who have been receiving income support for 12 months or more. Duration of long-term recipients can be reset to zero if they exited from payments for more than 13 weeks.
Mature Age Allowance (MAA)	<p>From 20 October 2003, Mature Age Allowance was closed to new claimants. The payment ceased by October 2008.</p> <p>Mature Age Allowance was a payment for unemployed people aged 60 years and over (but below Age Pension age) with little or no recent workforce experience. These people were not required to look for work to be eligible for the payment. See Explanatory Notes for history.</p>
Newstart Allowance (NSA)	Newstart Allowance is payable to eligible unemployed persons aged 21 years and over (but below Age Pension age) who satisfy the activity test. See Explanatory Notes for history.
Partner Allowance (PA)	<p>From 20 October 2003, Partner Allowance was closed to new claimants. People on Partner Allowance before this date can remain on the allowance while they remain 'current', that is retain eligibility and entitlement for the allowance.</p> <p>Partner Allowance was for dependent partners of pensioners and allowees. Partners had to be born before 1 July 1955, have no dependent children and have little or no recent workforce experience. Partner Allowance had no job search requirement. See Explanatory Notes for history.</p>
Short-term recipients	Persons on Newstart Allowance or Youth Allowance who have been receiving income support for less than 12 months. Duration of short-term recipients can be reset to zero if they exited from payments for more than 6 weeks.
Widow Allowance (WA)	<p>From 1 July 2005 Widow Allowance new grants may only be made to women born on or before 1 July 1955.</p> <p>Widow Allowance, a non-activity tested payment, is payable to females aged 50 years or over who have become widowed, divorced or separated since turning 40 years if they have little or no recent work experience and meet a number of other criteria relating to current marital status. See Explanatory Notes for history.</p>
Youth Training Allowance (YTA)	From 1 January 1995 eligible persons aged under 18 years who were registered as unemployed with the CES were paid Youth Training Allowance. From 1 July 1998, Youth Training Allowance was replaced by Youth Allowance. See Explanatory Notes for history.
Youth Allowance (YA)	<p>Youth Allowance is payable to eligible full-time students aged 16 to 25 years, and to eligible unemployed persons aged 16 to 20 years who satisfy the activity test. Note, there are certain exceptions for some 15 and 25 year olds. See Explanatory Notes for history.</p> <p>Youth Allowees may be undertaking full-time study, full-time job search or a combination of approved activities. Some young</p>

people will be exempt from the activity test because of their personal circumstances, eg. illness, homelessness or major personal crisis. See the Explanatory Notes for more information.

From 1 July 2009 young people under 21 years of age without a Year 12 or equivalent qualification will usually need to:

- participate in education and training full-time; or
- participate full-time (that is, for at least 25 hours a week) in part-time study or training, in combination with other approved activities, until they attain Year 12 or an equivalent Certificate Level II or above qualification.

Job seekers already in receipt of Youth Allowance before 1 July 2009 who do not have Year 12 or an equivalent qualification will transition to the new requirements between 1 January 2010 and 30 June 2010.

Youth Allowance (other)

Youth Allowance recipients who are not full-time students or full-time Australian Apprentices.

Zero paid

See 'Did not receive a payment'.

APPENDIX

COMPARISONS BETWEEN DEEWR UNEMPLOYMENT LABOUR MARKET PAYMENT NUMBERS AND ABS LABOUR FORCE UNEMPLOYMENT STATISTICS

Official statistics	Official unemployment statistics are released by the Australian Bureau of Statistics (ABS). The ABS uses definitions recommended by the International Labour Office which have been accepted internationally as the most appropriate for the compilation of official statistics of unemployment.
ABS definition	The ABS unemployment statistics measure the number of persons who, for a particular reference period, did not undertake any paid work, were actively looking for work and were available to start work.
DEEWR Unemployment Labour Market Payment Statistics	The labour market payment statistics give the number of persons who are both eligible and entitled to receive Newstart Allowance or Youth Allowance (other). The criteria for receipt of these payments do not match those the ABS uses to determine whether a person is classed as unemployed or employed for statistical purposes.
Differences	Care should be taken when comparing the ABS labour force and DEEWR labour market payment data. There are a number of reasons why the two series cannot be directly compared.
<i>Duration</i>	<p>Both DEEWR and the ABS classify long-term duration as over 12 months, but use substantially different definitions of duration:</p> <p>DEEWR measures duration of income support. This includes not just time on unemployment benefits but time on any income support payment.</p> <p>The ABS measures length of time unemployed using their unemployment definition.</p> <p>DEEWR unemployed recipients can have breaks without payment and still be classified as long-term income support recipients:</p> <ul style="list-style-type: none">• Recipients who do not receive a payment due to their earnings can have up to 12 weeks without a payment before they are automatically cancelled. This reduces disincentives to accept short-term work.• Long-term recipients can have 13 weeks off payment after payment is cancelled and keep their long-term status if they return to income support. This means they keep access to assistance such as the higher payment rate for recipients over 60.

For the ABS statistics, any hours of work for a period as short as two weeks count as a break from unemployment and so are enough to reset a person's unemployment duration.

The difference between these two concepts, together with the fact that DEEWR recipients are able to have ongoing part-time work (see 'employment' below) mean that many unemployed recipients remain classified by DEEWR as long-term recipients when they would be classified as short-term unemployed under the ABS definition.

<i>Seasonal adjustment</i>	The ABS produces a seasonally adjusted series. The DEEWR labour market payment numbers data are not seasonally adjusted.
<i>Classification</i>	<p>The ABS classifies a person as unemployed if he or she is aged 15 years and over, was not employed during the week before the interview, has actively looked for full-time or part-time work and is available to start work. From February 2004, people who had not actively looked for work because they were waiting to start a job within four weeks are also classified as unemployed.</p> <p>The Newstart Allowance and Youth Allowance (other) series generally count people who are eligible for and entitled to receive a payment between the ages of 15 years and 64 years in the case of men and 15 to 63 years in the case of women.</p>
<i>Employment</i>	Newstart Allowance and Youth Allowance (other) recipients may be employed part-time, but within an income test limit; the ABS classifies a person as "employed" if, among other things, he or she has worked for one hour or more during the survey period.
<i>Timing</i>	<p>The timing of collections of the series are different:</p> <ul style="list-style-type: none">• DEEWR reports monthly average numbers of people both eligible for and entitled to receive Newstart Allowance and Youth Allowance (other). These monthly averages are calculated using figures collected for each Friday throughout the reference month.• ABS numbers are based on a sample survey which interviews occupants of selected dwellings covering around 0.27% of the total Australian population. These persons are generally interviewed during the two weeks beginning the Monday between the 6th and 12th of each month and the information obtained relates to the week before the interview takes place.
<i>Treatment of partners</i>	The ABS series includes unemployed persons whose spouse is working, irrespective of income, whereas Newstart Allowance and Youth Allowance (other) recipients are subject to an income and assets test for themselves and their spouse.
<i>Pensioners</i>	The ABS series includes persons being paid a pension but looking for work (eg. sole parents in receipt of Parenting Payments looking for work).

<i>Non job seekers</i>	The overall Newstart Allowance and Youth Allowance (other) series includes persons who are not required to undertake jobsearch. These persons are separately identified in Tables 2 and 3, and have then been excluded in subsequent tables. These people may be undertaking training, the development of self-employment opportunities, full-time voluntary work or a combination of voluntary and part-time work which excludes them from jobsearch obligations. They may also be incapacitated or have another temporary exemption from jobsearch.
<i>Waiting periods</i>	The ABS series includes persons who are serving a waiting period before being granted Newstart Allowance or Youth Allowance (other), or whose allowance was deferred.
<i>Survey</i>	The ABS figures are derived from a Labour Force Survey which is a sample survey, whereas the DEEWR statistics are a complete count of those both eligible for and entitled to receive Newstart Allowance and Youth Allowance (other).

FOR MORE INFORMATION

Labour market information

Other statistics on recipients of labour market related payments are available on request.

In addition to Newstart and Youth Allowances, statistics are also available on Partner Allowance, Mature Age Allowance and Widow Allowance.

For publication distribution enquiries email:
workingagepaymentsdatarequests@deewr.gov.au

Written correspondence concerning this publication or statistics on labour market related payments should be addressed to:

Director
Income Support Information Section
Working Age Payment Programs Branch
Income Support and Stakeholder Group
Department of Education, Employment and Workplace Relations
PO Box 9879
Canberra Mail Centre ACT 2601

or forwarded via facsimile to (02) 6204 2912.

Other recipient information

The Department of Families, Housing, Community Services and Indigenous Affairs has published:
Income Support Customers: a Statistical Overview
1996, 1997, 1998, 1999, 2000, 2001, 2002, 2003 and 2004.

The Department of Families, Housing, Community Services and Indigenous Affairs Statistics also collates statistics about the various pensions, benefits and family payments which that Department administers.