



NSW QUARTERLY REGIONAL LABOUR MARKET REPORT: FEBRUARY 2010

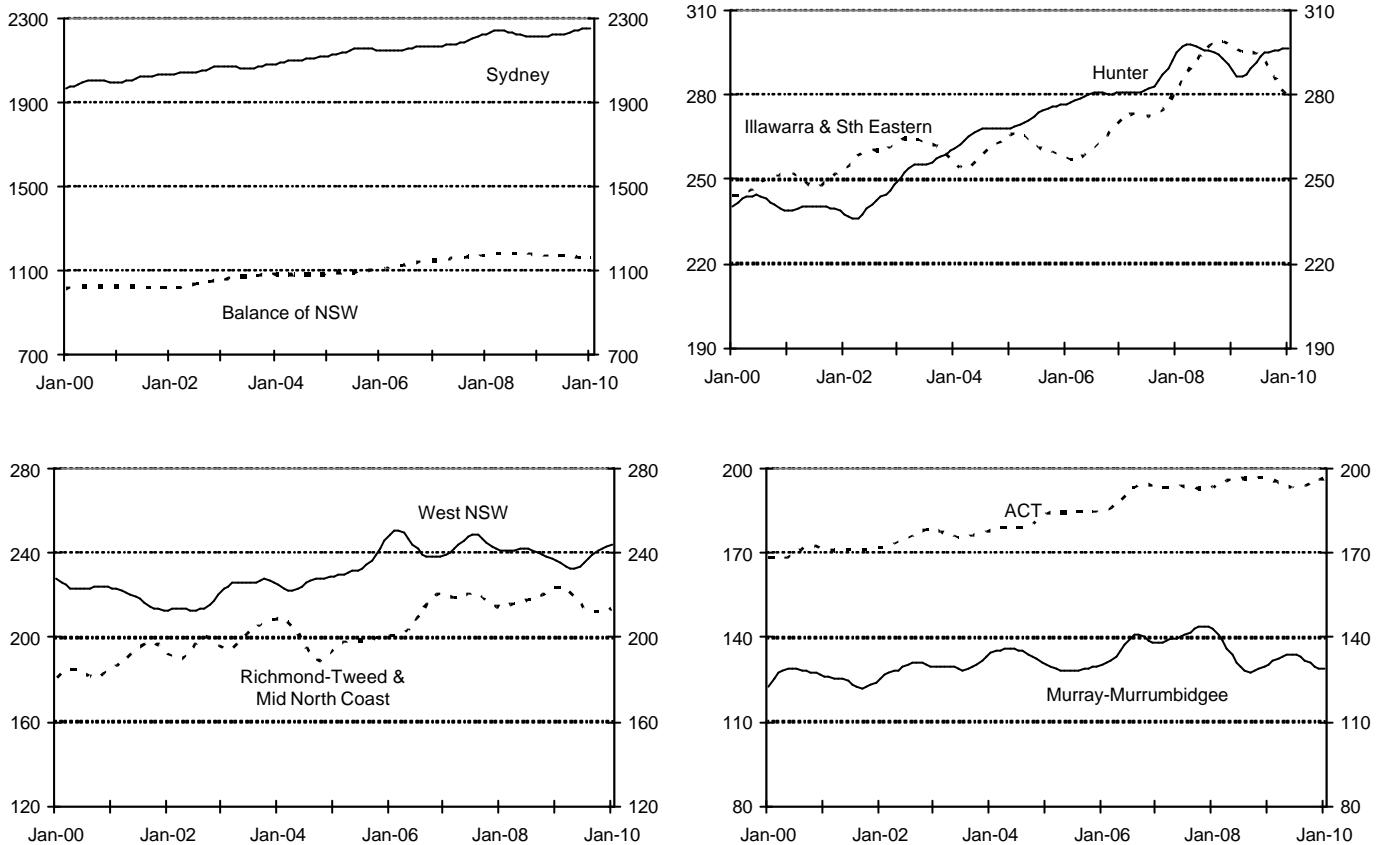
Summary

- *Employment* rose by 1.6 per cent in Sydney and fell by 1.2 per cent in the balance of NSW and 0.2 per cent in the ACT over the year to the January quarter 2010. Of the non-Sydney regions, employment grew in the Hunter and West NSW.
- *Unemployment* rose by 6.4 per cent in Sydney, 16 per cent in the balance of NSW and 39 per cent in the ACT over the year to the January quarter 2010. Unemployment was lower over the year in Richmond-Tweed & Mid North Coast.
- *Labour force participation* was lower over the year to the January quarter in most regions but higher in Sydney and West NSW.
- The average number of *job seeker allowees* in the year ended January 2010 was higher by 34 per cent in Sydney, 11 per cent in the rest of NSW and 31 per cent in the ACT. Outside of Sydney, Wollongong and Richmond-Tweed recorded the largest proportional annual rises in job seeker allowees.
- *Residential building approvals* declined by three per cent in Sydney and by seven per cent in the balance of NSW in the year to December 2009. Annual approvals rose in 40 per cent of the regions with Northern and Central West recording the largest proportional increases. The value of non-residential building approvals in the year to December rose by 13 per cent in Sydney and by 56 per cent in the rest of NSW, boosted by the Australian Government's Building the Education Revolution initiative.
- *Guest nights of accommodation* fell by 0.6 per cent in NSW in the year to the September quarter 2009. However, guest nights rose in around 60 per cent of the regions with the strongest growth in Big Sky Country, the Hunter and Northern Rivers Tropical regions.
- *Major projects underway* include a \$500 million development in Camden that will deliver 2,400 new homes and construction of the Australian Institute of Innovative Materials (AIIM) Processes and Devices building at the University of Wollongong's Innovation Campus. The NSW Government has approved the development of two new gas fired power stations north of Marulan which will support around 500 construction jobs and granted planning approval for a \$2 billion expansion of the Cadia Valley gold and copper mining complex near Orange. Port Waratah Coal Services has announced a \$670 million expansion of Newcastle's Kooragang coal terminal.

Employment

Trend employment is rising in Sydney, the Hunter, West NSW and the ACT, broadly flat in Richmond-Tweed & Mid North Coast, and falling in Illawarra & South Eastern and Murray-Murrumbidgee. West NSW comprises the ABS regions of Northern, Far West, North Western and Central West.

Employment (000s)



Source: ABS Labour Force Survey. Data has been trended by DEEWR.
Trend data for recent months can be subject to considerable revision.

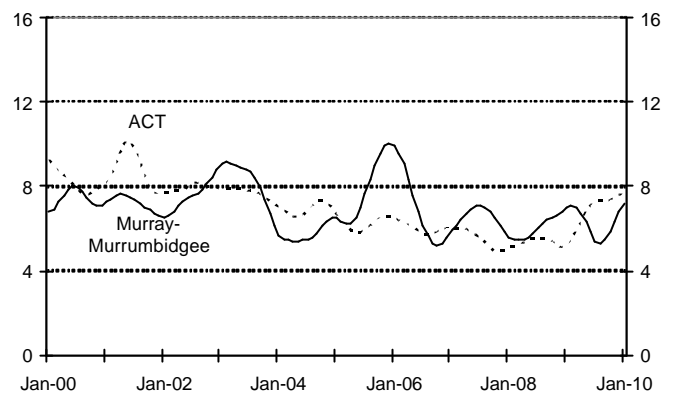
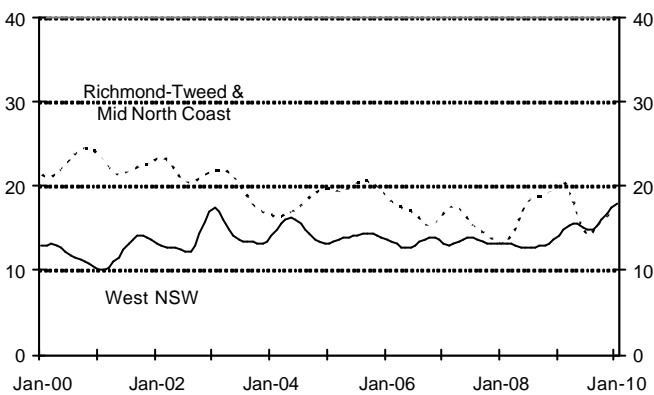
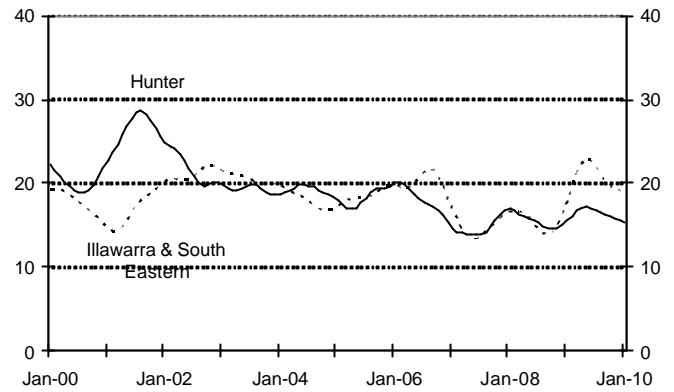
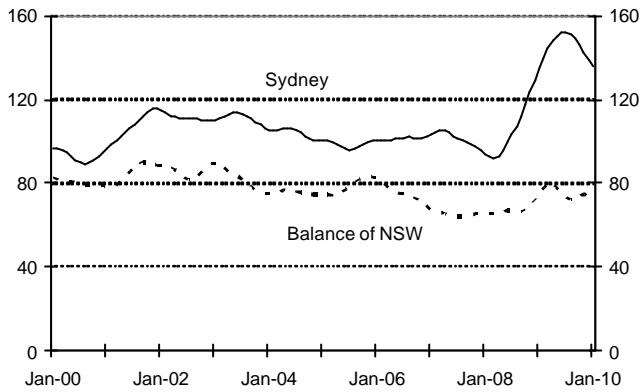
Compared to the same quarter in 2009, average non-trend employment in the January quarter was higher by 1.6 per cent in Sydney, and lower by 1.2 per cent in the balance of NSW and by 0.2 per cent in the ACT (see table on page four). Of the non-Sydney regions, employment grew over the year in the Hunter and West NSW.

Unemployment

Trend unemployment is falling in Sydney, the Hunter and Illawarra & South Eastern, and rising in the other NSW regions depicted in the charts below as well as in the ACT.

Compared to the corresponding quarter in 2009, average non-trend unemployment in the January quarter was higher by 6.4 per cent in Sydney, by 16 per cent in the balance of NSW and by 39 per cent in the ACT (see table on page four). Unemployment was lower over the year in Richmond-Tweed & Mid North Coast.

Unemployment (000s)



Source: ABS Labour Force Survey. Data has been trended by DEEWR.
Trend data for recent months can be subject to considerable revision.

Labour force participation

Labour force participation in the January quarter 2010 was slightly higher compared to the same quarter in the previous year in Sydney and lower in the balance of NSW and the ACT (see table on page four).

Amongst the major non-Sydney regions, labour force participation was higher over the year to the January quarter in West NSW, almost unchanged in the Hunter and Murray-Murrumbidgee and lower in Illawarra & South Eastern and Richmond-Tweed & Mid North Coast.

Table 2
Regional Labour Force Data January Quarter 2010

Original (non-seasonally adjusted) figures in quarterly averages. Minor inconsistencies due to rounding of estimates.

REGION	EMPLOYMENT (000s)			UNEMPLOYMENT (000s)			UE RATE		PARTICIPATION	
	Same Qtr	Current	Change	Same Qtr	Current	Change	Same Qtr	Current	Same Qtr	Current
	Last Year	Quarter		Last Year	Quarter		Last Year	Quarter	Last Year	Quarter
NSW	3397.2	3418.8	21.7	193.8	212.2	18.4	5.4%	5.8%	63.5%	63.2%
SYDNEY	2216.6	2251.9	35.3	127.9	136.0	8.1	5.5%	5.7%	65.8%	65.9%
Inner Sydney and Inner Western Sydney	321.7	321.3	-0.4	14.6	15.7	1.1	4.4%	4.7%	71.6%	69.8%
Inner Sydney	226.0	228.8	2.8	9.3	8.6	-0.7	4.0%	3.6%	74.7%	73.1%
Eastern Suburbs	139.5	138.9	-0.6	2.8	5.0	2.2	2.0%	3.5%	67.2%	67.3%
St George-Sutherland	223.9	241.4	17.5	11.6	12.1	0.4	4.9%	4.8%	64.2%	68.3%
Canterbury-Bankstown	134.3	126.7	-7.6	11.6	13.7	2.1	7.9%	9.8%	58.1%	55.5%
Fairfield-Liverpool and Outer South Western Sydney	273.7	279.1	5.4	24.5	19.6	-4.9	8.2%	6.6%	63.3%	62.4%
Fairfield-Liverpool	155.5	154.2	-1.3	15.7	10.6	-5.1	9.2%	6.4%	60.5%	57.4%
Central Western Sydney	153.4	142.1	-11.3	10.6	12.7	2.1	6.5%	8.2%	61.9%	57.3%
North Western Sydney	308.1	314.0	5.8	21.7	18.8	-2.9	6.6%	5.7%	70.0%	69.6%
Lower Northern Sydney	170.1	176.3	6.2	6.3	8.4	2.1	3.6%	4.6%	67.3%	69.5%
Central Northern Sydney	227.3	236.2	8.8	9.4	11.5	2.2	4.0%	4.7%	67.4%	69.3%
Northern Beaches	131.3	135.0	3.7	4.5	5.2	0.7	3.3%	3.7%	70.0%	71.7%
Gosford-Wyong	133.3	141.0	7.7	10.2	13.2	3.0	7.1%	8.6%	57.1%	60.5%
BALANCE OF NSW	1180.6	1167.0	-13.6	65.9	76.2	10.3	5.3%	6.1%	59.6%	58.5%
Hunter	293.2	297.4	4.2	16.5	17.4	0.9	5.3%	5.5%	60.2%	60.1%
Newcastle	244.4	246.6	2.2	14.1	14.4	0.4	5.4%	5.5%	59.9%	59.4%
Illawarra and South Eastern NSW	296.9	279.5	-17.3	15.4	18.9	3.5	4.9%	6.3%	60.2%	56.5%
Illawarra	191.1	172.4	-18.6	10.0	13.4	3.4	5.0%	7.2%	58.4%	53.0%
Wollongong	131.7	113.4	-18.3	8.6	9.6	1.0	6.1%	7.8%	61.0%	52.7%
Richmond-Tweed and Mid-North Coast	225.4	216.9	-8.6	18.1	15.2	-2.9	7.4%	6.5%	54.6%	50.9%
Northern, Far West-North Western and Central West	233.1	241.2	8.1	9.8	17.0	7.2	4.0%	6.6%	61.3%	64.7%
Murray-Murrumbidgee	132.0	131.9	-0.1	6.1	7.7	1.6	4.4%	5.5%	63.9%	63.8%
ACT	196.6	196.2	-0.3	5.3	7.3	2.1	2.6%	3.6%	72.8%	72.5%
NSW and ACT	3593.7	3615.1	21.3	199.0	219.5	20.5	5.2%	5.7%	63.9%	63.6%
AUSTRALIA	10798.7	10915.2	116.5	526.2	624.0	97.8	4.6%	5.4%	65.3%	65.2%

Source: ABS Labour Force Survey. Data refers to residents. TAKE CARE: Data for small regions can be very imprecise and movements may be exaggerated.

Job seeker allowees

The average number of job seeker allowees in the year ended January 2010 was higher by 34 per cent in Sydney, 11 per cent in the rest of NSW and 31 per cent in the ACT. All regions recorded an annual increase in job seeker allowees, with the largest proportional rises outside of Sydney being in Wollongong and Richmond-Tweed.

The average number of job seeker allowees was 2.9 per cent lower in the January quarter 2010 than in the October quarter 2009 in Sydney and 0.5 per cent higher in the rest of NSW. For all the regions except Northern NSW, the percentage change in allowees between the January and October quarters was more favourable than was the case a year earlier. For just under half the regions, there was a decline in allowees in the January quarter with the largest proportional declines being in the ACT and Sydney.

Jobseekers Receiving Newstart Allowance and Youth Allowance (Other) Jan-10

	Annual Avg.	% Annual Change	Quarterly Change*	
			Last Year	This Year
Sydney	68,832	34%	14.3%	-2.9%
Central Coast	6,869	19%	10.9%	-2.8%
Hunter	13,435	13%	7.7%	-0.9%
Newcastle	10,774	14%	8.0%	-0.6%
Illawarra	9,119	19%	9.9%	0.8%
Wollongong	5,863	25%	12.1%	1.2%
Richmond-Tweed	6,983	25%	12.2%	0.9%
Mid-North Coast	9,241	6%	7.6%	-2.3%
Northern	4,849	5%	5.4%	5.9%
North Western	3,609	3%	5.1%	2.8%
Central & Far West	4,897	5%	5.5%	1.7%
South Eastern	3,998	3%	6.8%	-2.0%
Murrumbidgee	2,771	7%	5.0%	3.3%
Murray	2,550	12%	9.0%	2.0%
Non-Sydney (NSW)	61,452	11%	7.7%	0.5%
NSW	130,284	22%	10.9%	-1.3%
ACT	3,107	31%	13.8%	-5.0%
NSW+ACT	133,390	22%	10.9%	-1.4%

Source: DEEWR "Labour Market and Related Payments - a monthly profile"

* Not seasonally adjusted

Notes: The figures in the table above have been compiled from fortnightly averages published for Centrelink offices. They are only approximate because the postcode based Centrelink office boundaries do not always align with the boundaries of the ABS regions used here. The data cover those recipients of the Youth and Newstart allowances who were not exempt (through incapacity, participation in training, voluntary work, etc) from job search requirements. Changes in numbers of allowees can reflect administrative and legislative changes (whose impact could differ between regions) as well as labour market trends. There is a break in series between June and July 2009. For Youth Allowance, from 1 July 2009 young people under 21 years of age without a Year 12 or equivalent qualification will usually need to participate in education and training full-time; or participate in study or training, in combination with other approved activities, until they attain Year 12 or an equivalent Certificated Level 11 or above qualification.

Building approvals

Approvals for the construction of residential buildings declined by three per cent in Sydney and by seven per cent in the rest of NSW in the year ended December 2009. Annual approvals rose in 40 per cent of the regions with Northern and Central West recording the largest proportional increases. For almost three quarters of the regions, the percentage change in approvals between the December and September quarters was more favourable than was the case a year earlier. The largest percentage rises in the December quarter were in South Eastern and Wollongong. (*Note: the data are not seasonally adjusted.*)

Number of Dwelling Units Approved: December 2009

	Annual Level	% Annual Change	Quarterly Change*	
			Last Year	This Year
Sydney	15,857	-3%	-3%	12%
Central Coast	777	-10%	-36%	-20%
Hunter	2,689	-16%	-32%	-3%
Newcastle	2,228	-18%	-35%	-9%
Illawarra	1,468	-9%	32%	34%
Wollongong	731	2%	-48%	40%
Richmond-Tweed	819	-34%	-50%	-13%
Mid-North Coast	1,484	3%	-33%	6%
Northern	893	41%	-7%	8%
North Western	388	0%	-36%	-42%
Central & Far West	838	15%	8%	-30%
Central West	812	16%	10%	-31%
South Eastern	929	-4%	-5%	63%
Murrumbidgee	756	5%	-20%	-13%
Murray	544	-29%	141%	11%
Non-Sydney	10,808	-7%	-13%	3%
NSW	26,665	-5%	-7%	8%

Source: ABS Building Approvals

* Not seasonally adjusted

The value of non-residential building approvals in NSW rose by 24 per cent in the year ended December 2009 with a rise of 13 per cent in Sydney and 56 per cent in the rest of NSW. Non-residential approvals were higher over the year in all regions (except Central & Far West) with Northern and North West recording the largest percentage increases. For all regions except Murrumbidgee, the change in the non-seasonally adjusted value of approvals in the six months ended December 2009 compared to the previous six months was more favourable than in the same period in the previous year. Non-residential building approvals in the second half of 2009 were boosted considerably by the Australian Government's Building the Education Revolution initiative. Care is needed in interpreting the data as the timing of approval of a major project can greatly impact on the figures for a region.

Value of Non-Residential Building Approved (\$000s): December 2009

	Annual Value	% Annual Change	6 Monthly Change*	
			Last Year	This Year
Sydney	7,006,088	13%	-12%	131%
Central Coast	342,595	67%	63%	84%
Hunter	871,199	17%	-43%	141%
Newcastle	767,696	17%	-44%	127%
Illawarra	583,489	40%	-46%	44%
Wollongong	372,670	55%	17%	83%
Richmond-Tweed	302,973	152%	-18%	374%
Mid-North Coast	382,252	75%	-10%	335%
Northern	273,397	273%	40%	283%
North Western	179,851	201%	-23%	387%
Central & Far West	291,419	-19%	-76%	172%
Central West	266,138	-24%	-76%	147%
South Eastern	235,119	181%	26%	255%
Murrumbidgee	312,051	160%	114%	87%
Murray	189,328	46%	74%	469%
Non-Sydney	3,621,076	56%	-34%	172%
NSW	10,627,164	24%	-19%	144%

Source: ABS Building Approvals

* Not seasonally adjusted, not adjusted for inflation

Guest nights of accommodation

In the year ended September 2009, Sydney Tourist Region accounted for 50 per cent of guest nights in the NSW establishments surveyed. The annual change in guest nights was a fall of 2.7 per cent for Sydney and a rise of 1.7 per cent for the rest of NSW. Big Sky Country, the Hunter and Northern Rivers Tropical were among the regions which had above average annual percentage growth while guest nights fell in 40 per cent of the regions with the Riverina recording the largest percentage decline.

Guest Nights Of Accommodation – September Quarter 2009

Tourist Region	Total For The Quarter	4 Quarter Percentage Annual Change
Sydney	3,649,411	-2.7%
Central Coast	157,773	-3.5%
Blue Mountains	114,748	3.2%
Hunter	395,282	5.1%
North Coast	609,023	2.6%
Northern Rivers Tropical NSW	366,382	4.0%
Illawarra	116,245	1.0%
South Coast	187,990	1.3%
Snowy Mountains	445,371	-1.5%
Capital Country	198,670	2.2%
Explorer Country	368,016	0.0%
Big Sky Country	262,711	8.3%
The Living Outback	130,026	-2.2%
Murray	229,626	-0.3%
Riverina	178,011	-4.6%
New South Wales	7,409,285	-0.6%

Note: The data are not adjusted for seasonal fluctuations.

Source: ABS Survey Of Tourist Accommodation Establishments with at least 5 Rooms.

Definitions of Tourist Regions

Sydney	All of Sydney Statistical Division except the Central Coast and Blue Mountains.
Blue Mountains	Covers the Blue Mountains, Lithgow and Oberon LGAs.
Hunter	Covers the Hunter Statistical Division excluding Great Lakes LGA.
North Coast	Covers LGAs along the coast from Great Lakes LGA to Coffs Harbour LGA.
Northern Rivers Tropical NSW	Covers the area bounded by the Ulmarra, Tweed, Kyogle and Nymboida LGAs.
Illawarra	Covers the Wollongong, Shellharbour and Kiama LGAs. (i.e. Illawarra Statistical Division excluding the Shoalhaven and Wingecaribee LGAs).
South Coast	Covers the Bega Valley, Eurobodalla and Shoalhaven LGAs.
Snowy Mountains	Covers the Bombala, Cooma-Monaro and Snowy River LGAs.
Capital Country	Covers the Boorowa, Crookwell, Goulburn, Gunning, Harden, Mulwaree, Queanbeyan, Tallaganda, Wingecaribee, Yarrowlunla, Yass and Young LGAs.
Explorer Country	Covers the area bounded by the Coolah, Mudgee, Rylstone, Evans, Blayney, Cowra, Weddin, Bland, Lachlan, Warren, Coonamble and Coonabarabran LGAs. Includes Dubbo, Orange and Bathurst.
Big Sky Country	Covers the area bounded by the Tenterfield, Severn, Guyra, Dumaresq, Walcha, Nundle, Quirindi, Gunnedah, Narrabri, Walgett, and Moree Plains LGAs. Includes Armidale and Tamworth.
The Living Outback	Covers the area bounded by the Brewarrina, Bogan, Cobar, Central Darling, and Balranald LGAs and the Victorian, S.A. and Queensland borders.
Murray	Covers the Murray Statistical Division area excluding the Tumbarumba, Balranald and Wentworth LGAs.
Riverina	Covers the Murrumbidgee Statistical Division plus Tumbarumba LGA.

Selected major projects

Media reports of selected recent and proposed major developments are listed below. The list is not exhaustive.

Sydney

- Stage one of the new Top **Ryde** City Shopping Centre opened in November 2009 with around 120 retailers. Stage two is opening over February/March 2010 and stage three is scheduled for opening in spring 2010. On completion, the centre will comprise 290 stores, a childcare centre, a medical centre, EVENT cinema, gymnasium and public library. The \$1.2 billion redevelopment of the shopping centre, which will ultimately include 425 residential apartments and 10,000 square metres of commercial space, is expected to create up to 3,500 jobs. (*Telephone conversation with Top Ryde City Shopping Centre 4-2-10, Top Ryde City Shopping Centre website downloaded 3-2-10, City of Ryde Council website downloaded 3-2-10, Bovis Lend Lease website downloaded 3-2-10*)
- Construction started in November 2009 on a \$500 million development that will deliver 2,400 new homes and employment land to support around 2,500 jobs. Gregory Hills, in the **Camden** district, will include a primary school, town centre and parkland. Infrastructure which forms part of the plan includes construction of five kilometres of Badgally Road to provide a link between Camden and Campbelltown, and upgrading about 500 metres of Camden Valley Way to four lanes. (*NSW Government Minister for Planning News Release 19-11-09, Camden Advertiser 16-2-10*)
- The NSW Government has approved a \$99 million redevelopment of the Children's Medical Research Institute (CMRI) at **Westmead** Hospital. Around 125 jobs will be created during construction, with the building capable of accommodating 500 research scientists. CMRI presently accommodates 120 research scientists, supported by 30 administration, fundraising and scientific support staff. In 2008, CMRI's board decided that the Institute should substantially increase its research activities and to build the laboratory space and facilities to make this possible. The redevelopment involves the demolition of the existing research building and construction of a five-storey building containing new laboratories, library, staff canteen, bio-services area, conference hall, gymnasium, medical rooms and boardroom as well as parking and associated infrastructure. (*NSW Government Minister of Planning Media Release 2-11-09, Children's Medical Research Institute Newsletter Summer 2009*)
- The NSW Government has announced approval for a \$427 million plan to redevelop and expand the University of Technology (UTS) campus at **Broadway** (near Sydney CBD). The approved concept plan would create around 1,350 construction jobs and another 80 ongoing jobs. The plan includes additional floor space for educational, retail, cultural and sporting uses as well as the construction of a \$70 million, 21-storey high student housing building. (*Premier of NSW News Release 18-1-10, theage.com.au 18-1-10*)

Hunter

- Port Waratah Coal Services (PWCS) has announced a \$670 million expansion of **Newcastle**'s Kooragang coal terminal. The program to build the new Kooragang No. 7 coal berth will create hundreds of construction jobs and add 20 million tonnes a year to PWCS's export capacity, taking it to about 130 million tonnes a year. Works are scheduled to be completed by the end of 2011. (*NSW Government Minister for Ports and Waterways Media Release 4-2-10, Newcastle Herald 4-2-10*)
- Construction of the Hunter Medical Research's new \$90 million headquarters at Rankin Park (suburb of **Newcastle**) is due to begin in 2010. The building, adjacent to the John Hunter Hospital, will house 400 medical researchers from the University of Newcastle and Hunter New England Health. (*Newcastle Herald 10-10-09, Hunter Medical Research Institute News Article 9-10-09*)
- A seven storey retail and commercial building for **Tuncurry** has been approved by the NSW Department of Planning. It is estimated that the \$9 million complex would create approximately 20 jobs during the construction phase and that the building will provide at least 60 full-time jobs. (*Great Lakes Advocate 9-12-09, NSW Department of Planning website Development Assessments Approval 24-11-09*)

Illawarra

- Construction began in January of the Australian Institute of Innovative Materials (AIIM) Processes and Devices building at the University of Wollongong's Innovation Campus in **Fairy Meadow**. In another major milestone, a fourth building has been completed with staff expected to move into the Sydney Business School and Digital Media Centre by February, boosting the site's population to 800. The \$300 million Innovation Campus is intended to be a hub for innovative research in areas such as science, business, media, health and technology. The joint venture between the university and developer Baulderstone Hornibrook could create up to 5,000 jobs. (*Illawarra Mercury 18-1-10*)
- The \$108 million Illawarra Ridge Golf Resort project at **Darkes Forest** (near Stanwell Park) is to go ahead following an international loan from Western Gulf Advisory. When complete the golf resort will include a nine-hole golf course, a clubhouse, driving range, 100 hotel rooms, 100 serviced apartments and 200 short day tourist villas. The project will create more than 100 jobs during its development and once it is operational. The golf resort was approved a year ago by the then NSW Planning Minister. (*Illawarra Mercury 25-1-10, NSW Government Department of Planning Director-General's Environmental Assessment Report January 2009*)
- The NSW Government has given a commitment to build a new \$28.9 million western grandstand at WIN stadium in **Wollongong** within three years. The two-tiered grandstand will include 6,170 covered seats, increasing the ground capacity by 3,758 to 23,150. The Australian Government will be approached to pay half the cost of the grandstand, but the project will go ahead regardless of national funding. According to the NSW Government, about 640 jobs, mainly in construction, would be created by the works. The Wollongong Sportsground Trust is working to a two-year construction timetable, with the demolition of the western grandstand targeted for the second half of

2010. (*Information from Win Sports and Entertainment Centres website, downloaded 24-2-10, Illawarra Mercury 17-10-09*)

South Eastern

- The NSW Government has approved the development of two new gas fired power stations north of **Marulan** which will support around 500 construction and 20 ongoing jobs. The stations, worth about \$800 million, have the potential to generate up to 800 megawatts of electricity (to power about 800,000 homes) and were proposed by Energy Australia and Delta Electricity. Energy Australia's proposal is for a 350 megawatt peaking power station. The Delta Electricity station would be rolled out in two stages, depending on market conditions. The first stage is a 250-350 megawatt peaking station while the second would involve converting this into a 400-450 megawatt base load facility. As the stations are situated next to each other, they have agreed to share supporting infrastructure. (*NSW Government Minister of Planning Media Release 2-11-09, Southern Highlands News 6-11-09*)

North Coast

- The \$19 million upgrade of **Grafton Base Hospital**, including new operating theatres and an improved emergency department, started in January. Work is expected to be completed towards the end of 2010. The Australian Government is providing \$18 million of funding for the upgrade. (*Daily Examiner 18-1-10, ABC News 29-1-10*)
- A \$14 million development at **Cabarita Beach** (near Tweed Heads) has been approved by the NSW Department of Planning. The Stockwell development features a Woolworths supermarket, at least 17 speciality shops, 40 residential units and parking for over 200 cars. Construction is scheduled to start in late 2010. (*Information from Stockwell website, downloaded 4-2-10, Tweed Sun 24-12-09*)

Northern NSW

- The NSW Government has approved a \$150 million, 26 turbine wind farm near **Glenn Innes**. The project is the first wind farm development to be approved in northern NSW and is expected to supply power to more than 25,000 homes and support 40 construction and four ongoing jobs. (*NSW Government Minister of Planning Media Release 3-11-09, Glenn Innes Examiner 5-11-09*)
- **Guyra** Shire Council has received a \$1.6 million no-interest loan from the NSW Government to develop a new estate of about 50 houses to relieve the town's housing shortage. Council expects to start work immediately with the loan to cover the undergrounding of power, water and telephone amenities, roads and kerb and guttering in the new estate. Since the start of the tomato farm in 2005, Guyra has grown very rapidly with 250 new jobs created. (*Armidale Express 22-1-10, NSW Government Member for Northern Tablelands Media Release 21-1-10*)

Central West

- The NSW Government has announced planning approval for a \$2 billion expansion of the Cadia Valley gold and copper mining complex near **Orange**. The project, which will be the largest underground mining operation in Australia, will support more than 2,000 jobs and extend the life of the mine by at least 20 years. The Cadia Valley workforce will swell to around 1,300 during construction and 880 ongoing operational jobs will be secured over the life of the mine. Construction was expected to begin directly after the Newcrest Mining Board meeting in the first quarter of 2010. (*Premier of NSW News Release 8-1-10, Daily Liberal 9-1-10*)
- **Cobar**'s Endeavour Mine is expecting to be operating at close to full capacity by the middle of 2010, creating 80 new jobs. According to the CEO, there will be a progressive ramping up of exploration and staffing which will see staff levels rise from 120 to 200. (*Daily Liberal 9-10-09, CBH Resources Ltd December 2009 Quarterly report*)