

LABOUR MARKET AND RELATED PAYMENTS

a monthly profile

Note: The Australian Bureau of Statistics (ABS) produces the official unemployment statistics. The figures contained in this publication are different from the ABS unemployment figures as the ABS and the Department of Education, Employment and Workplace Relations (DEEWR) use different definitions to identify the unemployed and different methods of counting (see the Appendix for more information).

This publication can be found at <http://www.workplace.gov.au/lmrp>

March 2009

Embargoed

Until 11.30 am, 22 April 2009

Annual Subscription - \$65.00

CONTENTS

	<i>Page</i>
Introduction	1
Statistical Highlights	2
Tables	
1. Labour Market Payments - Time Series	3
2. Newstart Allowees - Derivation of the job seeker population	4
3. Youth Allowees (other) - Derivation of the job seeker population	5
4. Job seekers receiving Newstart Allowance and Youth Allowance (other) - Time Series	6
5. Job seekers receiving Newstart Allowance and Youth Allowance (other) by State	7
6. Job seekers receiving Newstart Allowance and Youth Allowance (other) by Age and Sex	8
7. Job seekers receiving Newstart Allowance and Youth Allowance (other) by Area Support Office and Customer Service Centre	9
8. Job seekers receiving Newstart Allowance and Youth Allowance (other) by Fortnightly Earnings and Sex	23
Explanatory Notes	24
Glossary	30
Appendix	33
For More Information	36

INTRODUCTION

This publication presents statistical information on a monthly basis for the various types of labour market payments delivered by Centrelink on behalf of the Department of Education, Employment and Workplace Relations (DEEWR). This publication was produced previously by the Department of Employment and Workplace Relations (DEWR).

This publication covers NSA and YA(o) in some detail, and to a lesser extent, MAA, PA, WA, YA(FTS) and YA (Australian Apprentices).

Table 1 provides information on the total number of NSA and YA recipients. The YA population is broken down into YA(o), YA(FTS) and YA(Australian Apprentices) categories. The total numbers of MAA, PA and WA recipients are also provided in this table.

Tables 2 and 3 show the derivation of the NSA and YA(o) job seeker populations (see the reference to job seekers in the 'Comparability of data' section of the Explanatory Notes). These populations are added together to derive the total number of job seekers.

Tables 4 to 8 provide information on the total job seeker population.

When using time series figures, it is important to note that changes have occurred over time to the conditions of eligibility for different payments. Details of these changes are provided in the Explanatory Notes.

All media inquiries should be directed to the Centrelink National Media Officer on (02) 6155 0067. For more general inquiries regarding further statistical information please refer to the last page of this publication for other contact details.

The next issue of this publication is scheduled for release on 20 May 2009.

STATISTICAL HIGHLIGHTS – March 2009

Between March 2008 and March 2009:

Total Newstart Allowance (NSA) and Youth Allowance (other) (YA(o)) recipients **increased 17.4%** overall from 504,675 to 592,524.

- ◆ NSA recipients increased 17.2% from 438,786 to 514,265; and
- ◆ YA(o) recipients increased 18.8% from 65,889 to 78,259.

The number of job seekers **increased 20.5%** overall from 307,316 to 370,235.

- ◆ NSA job seekers increased 20.5% from 255,279 to 307,699; and
- ◆ YA(o) job seekers increased 20.2% from 52,037 to 62,536.

Long-term job seekers decreased 3.8% from 165,748 to 159,449.

Short-term job seekers increased 48.9% from 141,568 to 210,786.

For comparisons between DEEWR unemployment labour market payment numbers and ABS labour force unemployment statistics, see Appendix.

**Newstart Allowance and Youth Allowance (other)
March 2007 to March 2009**

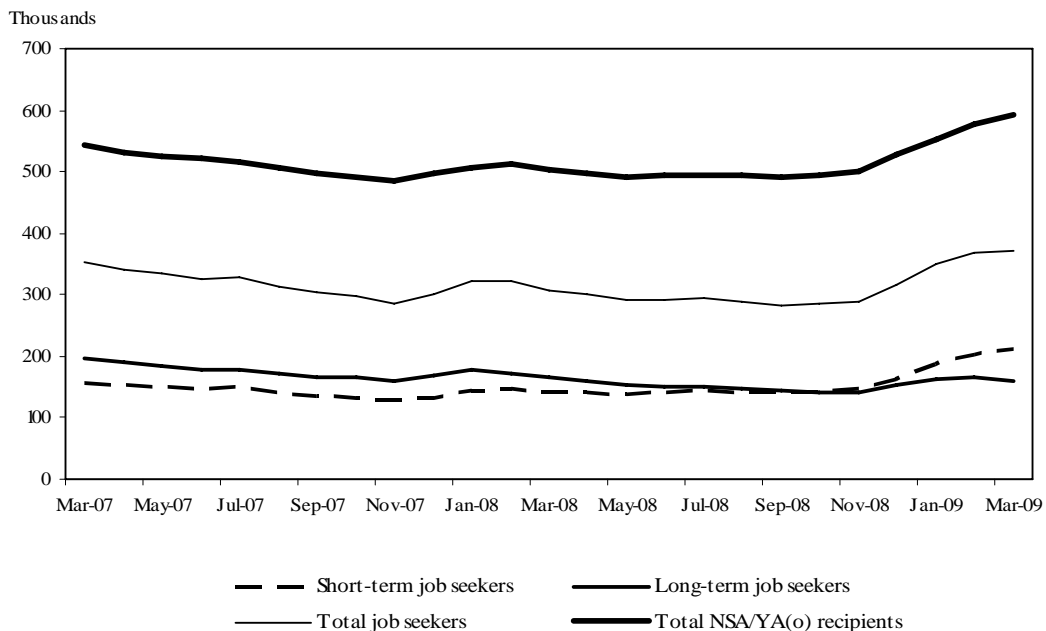


TABLE 1 - LABOUR MARKET PAYMENTS - TIME SERIES (a)

	Newstart Allowance		Youth Allowance			Mature Age Allowance	Partner Allowance	Widow Allowance
	Long-term (b)	Total	Other	Full-time Students (c)	Australian Apprentices (d)			
February 1994 (e)	472,785	977,796
March 2007	281,937	473,278	71,619	239,502	4,087	6,751	50,058	42,032
April 2007	277,688	463,732	68,746	250,660	4,250	6,235	48,912	41,619
May 2007	274,568	458,297	67,973	256,805	4,341	5,790	47,896	41,245
June 2007	271,439	452,733	67,852	261,197	4,435	5,284	46,709	40,886
July 2007	269,816	448,833	67,617	256,808	4,416	4,796	45,917	40,735
August 2007	267,972	442,112	63,717	263,166	4,490	4,381	45,459	40,853
September 2007	266,180	435,711	62,042	265,669	4,509	3,981	45,058	41,019
October 2007	264,434	429,811	59,920	264,829	4,350	3,619	44,695	41,156
November 2007	261,930	424,168	59,967	249,546	4,093	3,242	44,358	41,278
December 2007	264,127	428,962	69,320	215,158	3,956	2,868	43,997	41,400
January 2008	266,199	437,918	69,709	206,509	3,746	2,518	43,434	41,297
February 2008	266,368	443,916	69,728	213,384	3,897	2,149	42,512	41,014
March 2008	263,759	438,786	65,889	227,301	4,094	1,797	41,528	40,729
April 2008	260,541	433,674	63,680	236,930	4,274	1,503	40,708	40,503
May 2008	257,363	429,363	63,395	245,421	4,419	1,166	39,804	40,124
June 2008	255,550	428,896	63,972	252,180	4,444	856	38,915	39,702
July 2008	254,723	429,989	65,514	248,493	4,402	586	38,109	39,321
August 2008	253,131	429,459	63,347	254,853	4,256	307	37,226	38,946
September 2008	251,987	429,426	62,832	258,973	4,018	47	36,411	38,640
October 2008	251,529	431,546	62,227	259,337	3,882	0	35,572	38,375
November 2008	251,170	437,270	64,053	247,471	3,683	0	34,733	38,142
December 2008	254,327	453,485	74,786	218,371	3,665	0	34,011	37,989
January 2009	258,403	475,183	76,613	208,624	3,506	0	33,234	37,753
February 2009	261,232	498,020	78,868	218,999	3,570	0	32,480	37,561
March 2009	262,162	514,265	78,259	238,274	3,707	0	31,802	37,364
<i>Variation February 2009 - March 2009</i>								
Number	930	16,245	-609	19,275	137	0	-678	-197
Per cent	0.4	3.3	-0.8	8.8	3.8	0.0	-2.1	-0.5

(a) This table presents data using the revised method of measuring the number of people receiving labour market payments introduced in July 2002. Revised historical data from May 1998 to June 2002 is in Table A (May 1998 - June 2000) and Table 1 (July 2000 - July 2002) of July 2002 publication.

(b) Long-term Newstart allowees are persons who have been receiving income support for 12 months or more.

(c) The number of full time students does not include those who have traded in their entire Youth Allowance entitlement for a loan under the Student Financial Supplement Loan Scheme. The Government announced on 24 April 2003 that no further loans would be issued under this Scheme from 1 January 2004. For further details, refer to the Explanatory Notes at the back of this publication.

(d) Australian Apprenticeships combine employment with structured training to provide a nationally recognised qualification. Australian Apprentices enter formal agreements known as either 'Training Agreements' or 'Contracts of Training' which set out the relationship between the employer and the Australian Apprentice and their respective rights and responsibilities.

(e) February 1994 data has been included for comparison purposes due to the peak in the number of persons receiving JSA/NSA at this point in time.

Notes:

- Most of the figures in this publication are averages and have been rounded. As a result, discrepancies may occur between sums of component items and totals, and in the calculation of variations.

TABLE 2 - NEWSTART ALLOWEES - DERIVATION OF THE JOB SEEKER POPULATION

	February 2009	March			Variation February - March	
		Males	Females	Persons	Number	Per cent
Short-term NSA Customers	236,788	166,092	86,011	252,103	15,315	6.5
CPS recipients (a)	2,387	1,835	624	2,459	72	3.0
Did not receive a payment (b)	8,293	7,076	5,189	12,265	3,972	47.9
Received a payment	226,108	157,181	80,198	237,379	11,271	5.0
Incapacitated (c)	18,300	11,287	7,289	18,576	276	1.5
Training	14,650	10,241	5,524	15,765	1,115	7.6
Self-employment development (d)	521	353	267	620	99	19.0
Voluntary/part-time work (e)	5,649	1,948	3,668	5,616	-33	-0.6
Other/temporary exemptions (f)	16,811	11,086	7,848	18,934	2,123	12.6
Short-term NSA job seekers (g)	170,177	122,266	55,602	177,868	7,691	4.5
Long-term NSA Customers	261,232	149,978	112,184	262,162	930	0.4
CPS recipients (a)	6,209	4,149	1,976	6,125	-84	-1.4
Did not receive a payment (b)	6,109	3,783	4,488	8,271	2,162	35.4
Received a payment	248,914	142,046	105,720	247,766	-1,148	-0.5
Incapacitated (c)	16,309	8,435	7,648	16,083	-226	-1.4
Training	53,725	33,091	21,546	54,637	912	1.7
Self-employment development (d)	162	97	76	173	11	6.8
Voluntary/part-time work (e)	17,234	7,815	9,150	16,965	-269	-1.6
Other/temporary exemptions (f)	28,109	17,283	12,794	30,077	1,968	7.0
Long-term NSA job seekers (g)	133,375	75,325	54,506	129,831	-3,544	-2.7
All NSA Customers	498,020	316,070	198,195	514,265	16,245	3.3
CPS recipients (a)	8,596	5,984	2,600	8,584	-12	-0.1
Did not receive a payment (b)	14,402	10,859	9,677	20,536	6,134	42.6
Received a payment	475,022	299,227	185,918	485,145	10,123	2.1
Incapacitated (c)	34,609	19,722	14,937	34,659	50	0.1
Training	68,375	43,332	27,070	70,402	2,027	3.0
Self-employment development (d)	683	450	343	793	110	16.1
Voluntary/part-time work (e)	22,883	9,763	12,818	22,581	-302	-1.3
Other/temporary exemptions (f)	44,920	28,369	20,642	49,011	4,091	9.1
All NSA job seekers (g)	303,552	197,591	110,108	307,699	4,147	1.4

(a) Persons with NSA eligibility who received CDEP Participant Supplement or add ons while participating in CDEP Projects.

(b) Persons who did not receive a payment due to their income and/or that of their partner. This group is often referred to as zero-paid.

(c) Activity code "incapacitated" relates to NSA recipients who have become temporarily ill or incapacitated.

(d) Those customers exempted from job search while they develop self-employment opportunities.

(e) Those customers undertaking approved full-time voluntary work or combinations of voluntary and part-time work who are not required to seek work.

(f) Includes other customers known not to have job search obligations. See 'Job seekers' in Explanatory Notes.

(g) Those customers who received a payment and generally are required to search for work. These customers form the basis of the population group in Tables 4 - 7.

Notes:

- For information on short-term and long-term categories please refer to the Glossary.

- Most of the figures in this publication are averages and have been rounded. As a result, discrepancies may occur between sums of component items and totals, and in the calculation of variations.

TABLE 3 - YOUTH ALLOWEES (OTHER) - DERIVATION OF THE JOB SEEKER POPULATION

	Variation					
	February 2009	March			February - March	
		Males	Females	Persons	Number	Per cent
Short-term YA (other) Customers	40,003	22,668	17,911	40,579	576	1.4
CPS recipients (a)	1,097	721	410	1,131	34	3.1
Did not receive a payment (b)	590	394	418	812	222	37.6
Received a payment	38,316	21,553	17,083	38,636	320	0.8
Part-time study & work (c)	6	3	4	7	1	16.7
Part-time study & other YA activities (d)	70	28	42	70	0	0.0
Incapacitated (e)	1,763	832	844	1,676	-87	-4.9
Training	1,583	1,065	631	1,696	113	7.1
Self-employment development (e)	9	5	6	11	2	22.2
Full-time voluntary work	0	0	0	0	0	0.0
Other non-job seekers (e)	1,889	1,033	1,225	2,258	369	19.5
Short-term YA (other) job seekers (f)	32,996	18,587	14,331	32,918	-78	-0.2
Long-term YA (other) Customers	38,865	17,890	19,790	37,680	-1,185	-3.0
CPS recipients (a)	790	504	300	804	14	1.8
Did not receive a payment (b)	850	436	646	1,082	232	27.3
Received a payment	37,225	16,950	18,844	35,794	-1,431	-3.8
Part-time study & work (c)	3	1	3	4	1	33.3
Part-time study & other YA activities (d)	47	23	39	62	15	31.9
Incapacitated (e)	1,137	404	682	1,086	-51	-4.5
Training	3,210	1,769	1,515	3,284	74	2.3
Self-employment development (e)	5	2	5	7	2	40.0
Full-time voluntary work	0	0	0	0	0	0.0
Other non-job seekers (e)	1,446	708	1,025	1,733	287	19.8
Long-term YA (other) job seekers (f)	31,377	14,043	15,575	29,618	-1,759	-5.6
All YA (other) Customers	78,868	40,558	37,701	78,259	-609	-0.8
CPS recipients (a)	1,887	1,225	710	1,935	48	2.5
Did not receive a payment (b)	1,440	830	1,064	1,894	454	31.5
Received a payment	75,541	38,503	35,927	74,430	-1,111	-1.5
Part-time study & work (c)	9	4	7	11	2	22.2
Part-time study & other YA activities (d)	117	51	81	132	15	12.8
Incapacitated (e)	2,900	1,236	1,526	2,762	-138	-4.8
Training	4,793	2,834	2,146	4,980	187	3.9
Self-employment development (e)	14	7	11	18	4	28.6
Full-time voluntary work	0	0	0	0	0	0.0
Other non-job seekers (e)	3,335	1,741	2,250	3,991	656	19.7
All YA (other) job seekers (f)	64,373	32,630	29,906	62,536	-1,837	-2.9

(a) Persons with YA eligibility who received CDEP Participant Supplement or add ons while participating in CDEP projects.

(b) Persons who did not receive a payment due to their own income and/or that of their partner or parents, where applicable. This group is often referred to as zero-paid.

(c) Those customers undertaking approved part-time study and work who are considered to have a full activity load and are not required to seek work.

(d) Those customers undertaking approved part-time study and other activities who are considered to have a full activity load and are not required to seek work.

(e) These categories are defined in the same way as in Table 2, except that those customers combining these activities with part-time study are classified under part-time study and other activities.

(f) Those customers who received a payment and generally are required to search for work. These customers form the basis of the population group in Tables 4 - 7.

Notes:

- For information on short-term and long-term categories please refer to the Glossary.

- Most of the figures in this publication are averages and have been rounded. As a result, discrepancies may occur between sums of component items and totals, and in the calculation of variations.

TABLE 4 - JOB SEEKERS RECEIVING NEWSTART ALLOWANCE AND YOUTH ALLOWANCE (OTHER)
TIME SERIES (a)

	Short-term	Long-term	Total
March 2007	157,827	195,351	353,178
April 2007	153,350	188,871	342,221
May 2007	151,083	183,234	334,317
June 2007	148,602	177,562	326,164
July 2007	149,043	178,467	327,510
August 2007	141,433	171,107	312,540
September 2007	136,186	166,762	302,948
October 2007	132,332	164,716	297,048
November 2007	127,425	159,046	286,471
December 2007	132,454	169,573	302,027
January 2008	145,046	177,005	322,051
February 2008	147,610	173,316	320,926
March 2008	141,568	165,748	307,316
April 2008	139,811	160,030	299,841
May 2008	138,808	154,313	293,121
June 2008	140,066	150,517	290,583
July 2008	143,050	150,831	293,881
August 2008	141,458	146,533	287,991
September 2008	140,447	143,357	283,804
October 2008	142,254	142,368	284,622
November 2008	146,670	141,488	288,158
December 2008	163,109	154,285	317,394
January 2009	186,990	164,229	351,219
February 2009	203,173	164,752	367,925
March 2009	210,786	159,449	370,235
<i>Variation February 2009 - March 2009</i>			
Number	7,613	-5,303	2,310
Per cent	3.7	-3.2	0.6

(a) This table presents data using the revised method of measuring the number of people receiving labour market payment introduced in July 2002. Revised historical data from May 1998 to June 2002 is in Table B of July 2002 publication.

Notes:

- For information on short-term and long-term categories please refer to the Glossary.

- Most of the figures in this publication are averages and have been rounded. As a result, discrepancies may occur between sums of component items and totals, and in the calculation of variations.

**TABLE 5 - JOB SEEKERS RECEIVING NEWSTART ALLOWANCE AND YOUTH ALLOWANCE (OTHER)
BY STATE**

<i>State</i>	February 2009	March 2009	Variation	
			February - March Number	Per cent
SHORT-TERM JOB SEEKERS				
New South Wales	67,857	69,627	1,770	2.6
Victoria	45,810	46,562	752	1.6
Queensland	47,052	50,960	3,908	8.3
South Australia	15,445	15,318	-127	-0.8
Western Australia	17,041	18,450	1,409	8.3
Tasmania	5,219	5,094	-125	-2.4
Northern Territory	3,050	3,127	77	2.5
Australian Capital Territory	1,699	1,648	-51	-3.0
AUSTRALIA	203,173	210,786	7,613	3.7
LONG-TERM JOB SEEKERS				
New South Wales	60,982	59,205	-1,777	-2.9
Victoria	38,789	36,513	-2,276	-5.9
Queensland	25,831	25,629	-202	-0.8
South Australia	15,580	15,097	-483	-3.1
Western Australia	10,502	10,483	-19	-0.2
Tasmania	6,203	5,900	-303	-4.9
Northern Territory	5,503	5,290	-213	-3.9
Australian Capital Territory	1,362	1,332	-30	-2.2
AUSTRALIA	164,752	159,449	-5,303	-3.2
TOTAL JOB SEEKERS				
New South Wales	128,839	128,832	-7	0.0
Victoria	84,599	83,075	-1,524	-1.8
Queensland	72,883	76,589	3,706	5.1
South Australia	31,025	30,415	-610	-2.0
Western Australia	27,543	28,933	1,390	5.0
Tasmania	11,422	10,994	-428	-3.7
Northern Territory	8,553	8,417	-136	-1.6
Australian Capital Territory	3,061	2,980	-81	-2.6
AUSTRALIA	367,925	370,235	2,310	0.6

Notes:

- Most of the figures in this publication are averages and have been rounded. As a result, discrepancies may occur between sums of component items and totals, and in the calculation of variations.

**TABLE 6 - JOB SEEKERS RECEIVING NEWSTART ALLOWANCE AND YOUTH ALLOWANCE (OTHER)
BY AGE AND SEX, AS AT MARCH 2009**

Age	Short-term job seekers		Long-term job seekers		Total job seekers	
	Number	Per cent	Number	Per cent	Number	Per cent
MALES						
Less than 18 years	5,239	3.7	2,750	3.1	7,989	3.5
18 - 20 years	13,343	9.5	11,292	12.6	24,635	10.7
21 - 24 years	22,940	16.3	10,953	12.3	33,893	14.7
25 - 29 years	22,993	16.3	11,125	12.4	34,118	14.8
30 - 39 years	33,871	24.0	18,804	21.0	52,675	22.9
40 - 49 years	23,175	16.5	15,250	17.1	38,425	16.7
50 - 59 years	13,974	9.9	12,086	13.5	26,060	11.3
60 years and over	5,318	3.8	7,108	8.0	12,426	5.4
Total	140,853	100.0	89,368	100.0	230,221	100.0
FEMALES						
Less than 18 years	4,788	6.8	3,293	4.7	8,081	5.8
18 - 20 years	9,536	13.6	12,278	17.5	21,814	15.6
21 - 24 years	12,034	17.2	8,529	12.2	20,563	14.7
25 - 29 years	8,363	12.0	5,827	8.3	14,190	10.1
30 - 39 years	11,221	16.0	10,598	15.1	21,819	15.6
40 - 49 years	12,277	17.6	14,227	20.3	26,504	18.9
50 - 59 years	9,209	13.2	11,730	16.7	20,939	15.0
60 years and over	2,505	3.6	3,599	5.1	6,104	4.4
Total	69,933	100.0	70,081	100.0	140,014	100.0
PERSONS						
Less than 18 years	10,027	4.8	6,043	3.8	16,070	4.3
18 - 20 years	22,879	10.9	23,570	14.8	46,449	12.5
21 - 24 years	34,974	16.6	19,482	12.2	54,456	14.7
25 - 29 years	31,356	14.9	16,952	10.6	48,308	13.0
30 - 39 years	45,092	21.4	29,402	18.4	74,494	20.1
40 - 49 years	35,452	16.8	29,477	18.5	64,929	17.5
50 - 59 years	23,183	11.0	23,816	14.9	46,999	12.7
60 years and over	7,823	3.7	10,707	6.7	18,530	5.0
Total	210,786	100.0	159,449	100.0	370,235	100.0

**TABLE 7 - JOB SEEKERS RECEIVING NEWSTART ALLOWANCE AND YOUTH ALLOWANCE
(OTHER) BY AREA SUPPORT OFFICE AND CUSTOMER SERVICE CENTRE**

<i>Area Support Office and Customer Service Centre</i>	February 2009	March 2009	Variation	
			February - March Number	Per cent
<i>SYDNEY EAST NEW SOUTH WALES</i>				
Bankstown	3,535	3,571	36	1.0
Bondi Junction	1,314	1,312	-2	-0.2
Burwood	1,706	1,779	73	4.3
Campsie	2,561	2,593	32	1.2
Caringbah	1,336	1,320	-16	-1.2
Chatswood	1,136	1,207	71	6.3
Corrimal	1,284	1,267	-17	-1.3
Dapto	1,384	1,357	-27	-2.0
Darlinghurst	1,657	1,726	69	4.2
Darlinghurst CCU	40	44	4	%
Haymarket	1	2	1	%
Hornsby	956	1,005	49	5.1
Hurstville	1,468	1,468	0	0.0
Lakemba	26	24	-2	%
Leichhardt	1,401	1,434	33	2.4
Maroubra	1,505	1,543	38	2.5
Marrickville	1,567	1,599	32	2.0
Northern Beaches	1,304	1,401	97	7.4
Participation Sydney East	2	2	0	%
Redfern	1,282	1,237	-45	-3.5
Revesby	8	10	2	%
Rockdale	1,448	1,435	-13	-0.9
Ryde	1,065	1,106	41	3.8
Shellharbour	1,553	1,561	8	0.5
Sutherland	506	567	61	12.1
Wollongong	1,586	1,519	-67	-4.2
Other (a)	7	9	2	%
Total	31,638	32,098	460	1.5

Note: For footnotes see end of table.

**TABLE 7 - JOB SEEKERS RECEIVING NEWSTART ALLOWANCE AND YOUTH ALLOWANCE
(OTHER) BY AREA SUPPORT OFFICE AND CUSTOMER SERVICE CENTRE**

<i>Area Support Office and Customer Service Centre</i>	February 2009	March 2009	Variation	
			February - March Number	Per cent
<i>SYDNEY WEST NEW SOUTH WALES</i>				
Auburn	2,235	2,251	16	0.7
Baulkham Hills	863	914	51	5.9
Blacktown	3,201	3,303	102	3.2
Cabramatta	2,031	2,077	46	2.3
Camden	750	763	13	1.7
Campbelltown	2,252	2,333	81	3.6
Fairfield	3,099	3,140	41	1.3
Hawkesbury	1,007	1,013	6	0.6
Ingleburn	1,480	1,477	-3	-0.2
Katoomba	788	770	-18	-2.3
Liverpool	3,762	3,913	151	4.0
Merrylands	1,960	1,957	-3	-0.2
Mt Druitt	3,047	3,084	37	1.2
Parramatta	2,006	2,018	12	0.6
Penrith	2,028	2,077	49	2.4
Springwood	423	406	-17	-4.0
St Marys	1,608	1,650	42	2.6
Other (a)	20	21	1	%
Total	32,560	33,167	607	1.9

Note: For footnotes see end of table.

**TABLE 7 - JOB SEEKERS RECEIVING NEWSTART ALLOWANCE AND YOUTH ALLOWANCE
(OTHER) BY AREA SUPPORT OFFICE AND CUSTOMER SERVICE CENTRE**

<i>Area Support Office and Customer Service Centre</i>	February 2009	March 2009	Variation	
			February - March Number	Per cent
HUNTER NEW SOUTH WALES				
Armidale	973	898	-75	-7.7
Cessnock	910	892	-18	-2.0
Charlestown	2,132	2,076	-56	-2.6
Ettalong	1,099	1,151	52	4.7
Glen Innes	279	270	-9	-3.2
Gosford	1,837	1,811	-26	-1.4
Gunnedah	452	418	-34	-7.5
Inverell	722	708	-14	-1.9
Kempsey	1,084	1,064	-20	-1.8
Kurri Kurri	479	480	1	0.2
Lakehaven	1,851	1,904	53	2.9
Maitland	1,643	1,644	1	0.1
Mayfield	980	912	-68	-6.9
Muswellbrook	539	538	-1	-0.2
Nambucca Heads	932	888	-44	-4.7
Nelson Bay	544	564	20	3.7
Newcastle	1,417	1,326	-91	-6.4
Port Macquarie	1,718	1,674	-44	-2.6
Raymond Terrace	1,055	1,031	-24	-2.3
Singleton	308	285	-23	-7.5
Tamworth	1,849	1,778	-71	-3.8
Taree	1,884	1,817	-67	-3.6
The Entrance	1,426	1,420	-6	-0.4
Toronto	1,038	1,026	-12	-1.2
Tuncurry (Forster)	972	957	-15	-1.5
Wallsend	1,485	1,457	-28	-1.9
Wyong	807	779	-28	-3.5
Other (a)	39	42	3	%
Total	30,454	29,810	-644	-2.1

Note: For footnotes see end of table.

**TABLE 7 - JOB SEEKERS RECEIVING NEWSTART ALLOWANCE AND YOUTH ALLOWANCE
(OTHER) BY AREA SUPPORT OFFICE AND CUSTOMER SERVICE CENTRE**

<i>Area Support Office and Customer Service Centre</i>	February 2009	March 2009	Variation	
			February - March Number	Per cent
<i>SOUTH WEST NEW SOUTH WALES</i>				
Batemans Bay	944	928	-16	-1.7
Bathurst	1,017	982	-35	-3.4
Bega	790	785	-5	-0.6
Belconnen	952	924	-28	-2.9
Bowral	554	561	7	1.3
Braddon	819	788	-31	-3.8
Cooma	337	327	-10	-3.0
Cowra	510	500	-10	-2.0
Dubbo	2,111	2,068	-43	-2.0
Goulburn	769	762	-7	-0.9
Griffith	591	573	-18	-3.0
Gungahlin	78	75	-3	%
Lanyon	38	34	-4	%
Leeton	377	363	-14	-3.7
Lithgow	609	600	-9	-1.5
Mudgee	725	704	-21	-2.9
Narooma	385	393	8	2.1
Nowra	2,217	2,231	14	0.6
Orange	1,148	1,110	-38	-3.3
Parkes	1,015	1,014	-1	-0.1
Queanbeyan	448	445	-3	-0.7
Tuggeranong	673	646	-27	-4.0
Tumut	294	278	-16	-5.4
Ulladulla	562	563	1	0.2
Wagga	1,584	1,518	-66	-4.2
Woden	475	479	4	0.8
Yass	114	113	-1	-0.9
Young	476	473	-3	-0.6
Other (a)	12	13	1	%
Total	20,624	20,250	-374	-1.8

Note: For footnotes see end of table.

**TABLE 7 - JOB SEEKERS RECEIVING NEWSTART ALLOWANCE AND YOUTH ALLOWANCE
(OTHER) BY AREA SUPPORT OFFICE AND CUSTOMER SERVICE CENTRE**

<i>Area Support Office and Customer Service Centre</i>	February 2009	March 2009	Variation	
			February - March Number	Per cent
<i>NORTH CENTRAL VICTORIA</i>				
Airport West	1,035	1,055	20	1.9
Albury	2,301	2,174	-127	-5.5
Box Hill	1,795	1,908	113	6.3
Broadmeadows	3,862	3,833	-29	-0.8
Camberwell	896	925	29	3.2
Darebin	3,052	3,032	-20	-0.7
Deniliquin	327	319	-8	-2.4
Echuca	502	506	4	0.8
Epping	1,894	1,819	-75	-4.0
Greensborough	31	23	-8	%
Heidelberg	1,537	1,477	-60	-3.9
Moreland	2,005	2,081	76	3.8
Newmarket	1,232	1,272	40	3.2
Seymour	612	380	-232	-37.9
Shepparton	2,105	1,996	-109	-5.2
South Melbourne	626	646	20	3.2
Sunbury	768	764	-4	-0.5
Wangaratta	1,585	1,399	-186	-11.7
Windsor	2,268	2,350	82	3.6
Yarra	1,820	1,775	-45	-2.5
Other (a)	10	12	2	%
Total	30,263	29,746	-517	-1.7

Note: For footnotes see end of table.

**TABLE 7 - JOB SEEKERS RECEIVING NEWSTART ALLOWANCE AND YOUTH ALLOWANCE
(OTHER) BY AREA SUPPORT OFFICE AND CUSTOMER SERVICE CENTRE**

<i>Area Support Office and Customer Service Centre</i>	February 2009	March 2009	Variation	
			February - March Number	Per cent
<i>SOUTH EAST VICTORIA</i>				
Bairnsdale	818	793	-25	-3.1
Belgrave	452	451	-1	-0.2
Cheltenham	1,564	1,636	72	4.6
Cranbourne	1,278	1,346	68	5.3
Dandenong	2,569	2,618	49	1.9
Fountain Gate	1,882	1,936	54	2.9
Frankston	2,483	2,616	133	5.4
Glen Waverley	995	1,047	52	5.2
Hastings	501	539	38	7.6
Lilydale	1,436	1,079	-357	-24.9
Mornington	438	448	10	2.3
Morwell	2,413	1,467	-946	-39.2
Oakleigh	1,705	1,780	75	4.4
Pakenham	584	619	35	6.0
Ringwood	1,852	1,903	51	2.8
Rosebud	848	742	-106	-12.5
Rowville	416	421	5	1.2
Sale	793	673	-120	-15.1
Springvale	1,935	2,005	70	3.6
Wantirna	1,232	1,276	44	3.6
Warragul	554	521	-33	-6.0
Wonthaggi	515	525	10	1.9
Other (a)	4	4	0	%
Total	27,267	26,445	-822	-3.0

Note: For footnotes see end of table.

**TABLE 7 - JOB SEEKERS RECEIVING NEWSTART ALLOWANCE AND YOUTH ALLOWANCE
(OTHER) BY AREA SUPPORT OFFICE AND CUSTOMER SERVICE CENTRE**

<i>Area Support Office and Customer Service Centre</i>	February 2009	March 2009	Variation	
			February - March Number	Per cent
WEST VICTORIA				
Ararat	230	224	-6	-2.6
Ballarat	2,816	2,749	-67	-2.4
Bendigo	2,687	2,580	-107	-4.0
Bendigo Central	419	381	-38	-9.1
Colac	485	494	9	1.9
Corio	1,719	1,672	-47	-2.7
Footscray	1,448	1,436	-12	-0.8
Geelong	2,905	2,941	36	1.2
Hamilton	435	416	-19	-4.4
Horsham	596	585	-11	-1.8
Maryborough	469	470	1	0.2
Melton	1,321	1,336	15	1.1
Mildura	1,772	1,663	-109	-6.2
Newport	1,107	1,134	27	2.4
Portland	401	411	10	2.5
Stawell	184	181	-3	-1.6
Sunshine	2,649	2,643	-6	-0.2
Swan Hill	870	881	11	1.3
Warrnambool	867	846	-21	-2.4
Watergardens	3,167	3,193	26	0.8
Werribee	2,917	3,031	114	3.9
Other (a)	18	13	-5	%
Total	29,482	29,280	-202	-0.7

Note: For footnotes see end of table.

**TABLE 7 - JOB SEEKERS RECEIVING NEWSTART ALLOWANCE AND YOUTH ALLOWANCE
(OTHER) BY AREA SUPPORT OFFICE AND CUSTOMER SERVICE CENTRE**

<i>Area Support Office and Customer Service Centre</i>	February 2009	March 2009	Variation	
			February - March Number	Per cent
<i>CENTRAL & NORTHERN QUEENSLAND</i>				
Atherton	746	755	9	1.2
Ayr	465	499	34	7.3
Bamaga RASC (Nth Peninsula RASC)	29	29	0	%
Biloela	183	179	-4	-2.2
Bowen	455	483	28	6.2
Cairns Families	7	7	0	%
Cairns Jobseekers	3,903	4,177	274	7.0
Cairns Remote (Indigenous ISC)	697	713	16	2.3
Cairns Seniors & Carers	6	7	1	%
Charters Towers	354	363	9	2.5
Edmonton	1	0	-1	%
Emerald	283	295	12	4.2
Gladstone	902	947	45	5.0
Greenfields	3	4	1	%
Ingham	355	354	-1	-0.3
Innisfail	710	749	39	5.5
Longreach	119	119	0	0.0
Mackay Jobseekers	1,459	1,586	127	8.7
Mackay Seniors & Carers	2	2	0	%
Mareeba	522	526	4	0.8
Mossman	483	534	51	10.6
Mt Isa	904	947	43	4.8
Normanton	169	166	-3	-1.8
Palm Island	324	322	-2	-0.6
Rockhampton Families	0	0	0	%
Rockhampton Jobseekers	1,947	1,980	33	1.7
Rockhampton Seniors & Carers	2	1	-1	%
Smithfield	2	1	-1	%
Thursday Island	273	264	-9	-3.3
Townsville City	3	3	0	%
Townsville Families	0	0	0	%
Townsville Jobseekers	3,430	3,646	216	6.3
Townsville Seniors & Carers	7	6	-1	%
Western Cape RASC	274	274	0	0.0
Whitsunday	427	495	68	15.9
Yarrabah RASC	372	393	21	5.6
Yeppoon	391	410	19	4.9
Other (a)	90	73	-17	%
Total	20,299	21,309	1,010	5.0

Note: For footnotes see end of the table.

**TABLE 7 - JOB SEEKERS RECEIVING NEWSTART ALLOWANCE AND YOUTH ALLOWANCE
(OTHER) BY AREA SUPPORT OFFICE AND CUSTOMER SERVICE CENTRE**

<i>Area Support Office and Customer Service Centre</i>	February 2009	March 2009	Variation	
			February - March Number	Per cent
<i>SOUTH & EAST QUEENSLAND</i>				
Bundaberg	3,016	3,136	120	4.0
Caboolture	2,349	2,456	107	4.6
Caboolture FCC and SC&R	0	0	0	%
Caloundra	1,144	1,216	72	6.3
Cherbourg	82	85	3	%
Chermside	1,026	1,096	70	6.8
Fortitude Valley	1,155	1,187	32	2.8
Gympie	1,276	1,284	8	0.6
Hervey Bay	1,501	1,537	36	2.4
Kawana Waters	571	591	20	3.5
Kingaroy	787	809	22	2.8
Kippa-Ring	999	1,051	52	5.2
Maroochydore	1,473	1,554	81	5.5
Maryborough	1,204	1,208	4	0.3
Mitchelton	1,005	1,052	47	4.7
Nambour	1,027	1,054	27	2.6
Noosa	952	1,046	94	9.9
Nundah	1,035	1,108	73	7.1
Strathpine	1,197	1,267	70	5.8
Toowong	872	898	26	3.0
Other (a)	569	623	54	9.5
Total	23,240	24,258	1,018	4.4

Note: For footnotes see end of table.

**TABLE 7 - JOB SEEKERS RECEIVING NEWSTART ALLOWANCE AND YOUTH ALLOWANCE
(OTHER) BY AREA SUPPORT OFFICE AND CUSTOMER SERVICE CENTRE**

<i>Area Support Office and Customer Service Centre</i>	February 2009	March 2009	Variation	
			February - March Number	Per cent
<i>SOUTH & WEST QUEENSLAND</i>				
Beenleigh	1,886	2,007	121	6.4
Browns Plains	1,614	1,681	67	4.2
Capalaba	700	770	70	10.0
Charleville	236	226	-10	-4.2
Cleveland	844	880	36	4.3
Dalby	488	487	-1	-0.2
Goodna	1,170	1,245	75	6.4
Goondiwindi	309	283	-26	-8.4
Inala	1,450	1,531	81	5.6
Ipswich	2,249	2,292	43	1.9
Mt Gravatt	1,583	1,693	110	6.9
Roma	158	166	8	5.1
South Brisbane	863	844	-19	-2.2
Stanthorpe	385	342	-43	-11.2
Stones Corner	1,444	1,495	51	3.5
Toowoomba	2,147	2,155	8	0.4
Warwick	487	496	9	1.8
Woodridge	1,697	1,870	173	10.2
Wynnum	885	913	28	3.2
Other (a)	8	10	2	%
Total	20,603	21,386	783	3.8

Note: For footnotes see end of table.

**TABLE 7 - JOB SEEKERS RECEIVING NEWSTART ALLOWANCE AND YOUTH ALLOWANCE
(OTHER) BY AREA SUPPORT OFFICE AND CUSTOMER SERVICE CENTRE**

<i>Area Support Office and Customer Service Centre</i>	February 2009	March 2009	Variation	
			February - March Number	Per cent
<i>SOUTH AUSTRALIA</i>				
Berri	965	870	-95	-9.8
Broken Hill	922	857	-65	-7.0
Ceduna	309	293	-16	-5.2
Coober Pedy	157	158	1	0.6
Currie Street	2	2	0	%
Elizabeth	2,604	2,569	-35	-1.3
Enfield	1,624	1,574	-50	-3.1
Gawler	1,145	1,146	1	0.1
Glenelg	882	866	-16	-1.8
Kadina	675	656	-19	-2.8
Kilkenny	1,676	1,622	-54	-3.2
Marion	2,108	2,051	-57	-2.7
Modbury	1,795	1,791	-4	-0.2
Mt Barker	651	654	3	0.5
Mt Gambier	1,305	1,260	-45	-3.4
Murray Bridge	886	887	1	0.1
Noarlunga	2,832	2,788	-44	-1.6
Norwood	1,881	1,835	-46	-2.4
Port Adelaide	1,544	1,541	-3	-0.2
Port Augusta	773	769	-4	-0.5
Port Lincoln	679	630	-49	-7.2
Port Pirie	920	912	-8	-0.9
Salisbury	2,571	2,591	20	0.8
Torrensville	1,568	1,512	-56	-3.6
Victor Harbor	647	639	-8	-1.2
Whyalla	743	736	-7	-0.9
Other (a)	34	28	-6	%
Total	31,898	31,237	-661	-2.1

Note: For footnotes see end of table.

**TABLE 7 - JOB SEEKERS RECEIVING NEWSTART ALLOWANCE AND YOUTH ALLOWANCE
(OTHER) BY AREA SUPPORT OFFICE AND CUSTOMER SERVICE CENTRE**

<i>Area Support Office and Customer Service Centre</i>	February 2009	March 2009	Variation	
			February - March Number	Per cent
WEST AUSTRALIA				
Albany	845	828	-17	-2.0
Armadale	974	1,070	96	9.9
Bunbury	1,618	1,705	87	5.4
Busselton	298	344	46	15.4
Cannington	1,506	1,607	101	6.7
Carnarvon	333	333	0	0.0
Cocos Islands	33	34	1	%
Collie	5	2	-3	%
Community Team Perth	110	101	-9	-8.2
Curtin on Campus SSC	19	13	-6	%
Esperance	279	308	29	10.4
Fremantle	1,248	1,285	37	3.0
Fremantle SACC	1	1	0	%
Fremantle SSC	0	0	0	%
Geraldton	1,233	1,227	-6	-0.5
Gosnells	1,026	1,126	100	9.7
Innaloo	1,294	1,338	44	3.4
Joondalup	1,539	1,677	138	9.0
Joondalup SACC	2	0	-2	%
Joondalup SSC	0	0	0	%
Kalgoorlie	802	863	61	7.6
Karratha	295	307	12	4.1
Laverton RASC	58	63	5	%
Mandurah	1,295	1,387	92	7.1
Meekatharra RASC	166	166	0	0.0
Midland	1,993	2,105	112	5.6
Mirrabooka	1,640	1,701	61	3.7
Morley	1,701	1,778	77	4.5
Morley - Dewar Street	2	2	0	%
Morley SSC	0	0	0	%
Newman RASC	189	196	7	3.7
Northam	508	531	23	4.5
Rockingham	1,660	1,747	87	5.2
South Hedland	418	421	3	0.7
Spearwood	974	1,016	42	4.3
Victoria Park	1,638	1,734	96	5.9
Warwick Grove	713	739	26	3.6
Other (a)	25	25	0	%
Total	26,440	27,780	1,340	5.1

Note: For footnotes see end of table.

**TABLE 7 - JOB SEEKERS RECEIVING NEWSTART ALLOWANCE AND YOUTH ALLOWANCE
(OTHER) BY AREA SUPPORT OFFICE AND CUSTOMER SERVICE CENTRE**

<i>Area Support Office and Customer Service Centre</i>	February 2009	March 2009	Variation	
			February - March Number	Per cent
TASMANIA				
Bridgewater	644	618	-26	-4.0
Burnie	1,403	1,424	21	1.5
Devonport	1,389	1,315	-74	-5.3
Glenorchy	1,709	1,676	-33	-1.9
Hobart	1,301	1,225	-76	-5.8
Huonville	398	409	11	2.8
Launceston	3,142	2,969	-173	-5.5
Mowbray	1	1	0	%
Rosny Park	986	912	-74	-7.5
Sorell	472	453	-19	-4.0
Other (a)	50	49	-1	%
Total	11,495	11,051	-444	-3.9
NORTH AUSTRALIA				
Alice Springs	2,557	2,537	-20	-0.8
Borroloola RASC	34	36	2	%
Broome	510	528	18	3.5
Casuarina	863	882	19	2.2
Derby	168	175	7	4.2
Fitzroy Crossing RASC	65	67	2	%
Halls Creek RASC	223	228	5	2.2
Katherine	1,222	1,135	-87	-7.1
Knuckey Street	451	464	13	2.9
Kununurra	277	278	1	0.4
Maningrida	328	301	-27	-8.2
Nhulunbuy	639	622	-17	-2.7
Palmerston	853	905	52	6.1
Tangentyere	79	76	-3	%
Tennant Creek	199	190	-9	-4.5
Tennant Creek Remote	70	66	-4	%
Tiwi Islands RASC	228	218	-10	-4.4
Top End Remote	727	715	-12	-1.7
Wadeye RASC	269	230	-39	-14.5
Yuendumu RASC	128	123	-5	-3.9
Other (a)	30	31	1	%
Total	9,920	9,807	-113	-1.1

Note: For footnotes see end of table.

**TABLE 7 - JOB SEEKERS RECEIVING NEWSTART ALLOWANCE AND YOUTH ALLOWANCE
(OTHER) BY AREA SUPPORT OFFICE AND CUSTOMER SERVICE CENTRE**

<i>Area Support Office and Customer Service Centre</i>	February 2009	March 2009	Variation	
			February - March Number	Per cent
<i>PACIFIC CENTRAL</i>				
Ballina	1,082	1,085	3	0.3
Beaudesert	479	504	25	5.2
Biggera Waters	1,947	2,141	194	10.0
Bourke	524	527	3	0.6
Brunswick Heads	613	601	-12	-2.0
Byron Bay	598	628	30	5.0
Casino	601	626	25	4.2
Coffs Harbour	2,497	2,480	-17	-0.7
Grafton	1,592	1,560	-32	-2.0
Lightning Ridge	185	187	2	1.1
Lismore	1,732	1,682	-50	-2.9
Maclean	0	0	0	%
Moree	523	509	-14	-2.7
Murwillumbah	608	612	4	0.7
Narrabri	349	318	-31	-8.9
Nerang	1,925	2,136	211	11.0
Palm Beach	2,342	2,619	277	11.8
Robina SCR	7	7	0	%
Southport	2,345	2,511	166	7.1
Tweed Heads	1,468	1,564	96	6.5
Walgett	282	268	-14	-5.0
Other (a)	35	25	-10	%
Total	21,734	22,590	856	3.9
<i>OTHER</i>				
Centrelink Call Centres (b)	59	61	2	%
Not coded to an area	6	6	0	%
Rounding adjustment (c)	-57	-46	11	%
AUSTRALIA	367,925	370,235	2,310	0.6

(a) Recipients not coded to a Customer Service Centre.

(b) Job seekers receiving NSA / YA (o) in Centrelink Call Centres which are not counted in the various Area Offices.

(c) Prior to the July 2007 publication, the rounding adjustment was included in the Fairfield CSC.

Notes:

- Where the Customer Service Centre has a population less than 100 in either of the reported months, the monthly percentage variation has been suppressed and replaced with the percentage symbol '%'. .

- Most of the figures in this publication are averages and have been rounded. As a result, discrepancies may occur between sums of component items and totals, and in the calculation of variations.

- From July 2007, new Area Support Office boundaries came into effect. A concordance between the new and old Area structures is provided in Table A in the July 2007 edition of this publication.

**TABLE 8 - JOB SEEKERS RECEIVING NEWSTART ALLOWANCE AND YOUTH ALLOWANCE (OTHER)
FORTNIGHTLY EARNINGS (%) AND SEX (a), FORTNIGHT ENDING 20 MARCH 2009**

<i>Fortnightly Earnings</i>	Short-term job seekers	Long-term job seekers	Total job seekers
MALES			
Did not earn an income	87.0	83.1	85.5
Earned an income	13.0	16.9	14.5
Amount earned			
\$0.01-\$62.00	0.5	0.7	0.6
\$62.01-\$142.00	1.8	2.3	2.0
\$142.01-\$236.00	2.2	2.9	2.5
\$236.01-\$316.00	1.6	2.0	1.8
Over \$316.00	6.8	9.0	7.6
Total	100.0	100.0	100.0
<i>Job seekers receiving NSA and YA (other)</i>	<i>141,194</i>	<i>88,872</i>	<i>230,066</i>
FEMALES			
Did not earn an income	77.2	71.6	74.4
Earned an income	22.8	28.4	25.6
Amount earned			
\$0.01-\$62.00	0.9	0.9	0.9
\$62.01-\$142.00	2.6	2.9	2.7
\$142.01-\$236.00	3.4	3.9	3.6
\$236.01-\$316.00	2.8	3.2	3.0
Over \$316.00	13.1	17.5	15.3
Total	100.0	100.0	100.0
<i>Job seekers receiving NSA and YA (other)</i>	<i>69,690</i>	<i>69,541</i>	<i>139,231</i>
PERSONS			
Did not earn an income	83.8	78.1	81.3
Earned an income	16.2	21.9	18.7
Amount earned			
\$0.01-\$62.00	0.6	0.8	0.7
\$62.01-\$142.00	2.1	2.6	2.3
\$142.01-\$236.00	2.6	3.3	2.9
\$236.01-\$316.00	2.0	2.5	2.2
Over \$316.00	8.9	12.8	10.5
Total	100.0	100.0	100.0
<i>Job seekers receiving NSA and YA (other)</i>	<i>210,884</i>	<i>158,413</i>	<i>369,297</i>

(a) Total figures in this table are different from Tables 2 to 7 because of different methodologies applied. Tables 2 to 7 are based on averages of weekly figures while this table is based on point in time data. See Explanatory Notes for further information.

EXPLANATORY NOTES

Introduction

This publication provides monthly statistical information on DEEWR labour market and related payments delivered by Centrelink. These Explanatory Notes provide details of the scope and methodology of the publication, as well as the policy changes which have affected the data since the publication was introduced in December 1995 by the then Department of Social Security.

Prior to December 1995, this publication was titled the *Monthly Job Search and Newstart Allowance Statistics*.

Scope

The primary focus of the publication is to provide information on unemployed people on Newstart Allowance and Youth Allowance, with a particular focus on the total number of job seekers. The number of people on Mature Age Allowance, Partner Allowance and Widow Allowance are also reported.

Methodology

Data in this publication relate to the average number of people who are both eligible (eg. meet 'unemployed' qualification) and entitled (eg. meet income and assets criteria) to receive a payment calculated over a reference month. Averages are calculated using figures collected for each Friday throughout the reference month.

Table 1 provides information on the total number of unemployed people on Newstart Allowance and Youth Allowance. The Youth Allowance population is split into Youth Allowance (full-time students), Youth Allowance (Australian Apprentices) and Youth Allowance (other) categories. Numbers of people on Mature Age Allowance, Partner Allowance and Widow Allowance are also provided.

Tables 2 and 3 provide a summary of the Newstart Allowance and Youth Allowance (other) populations and show the derivation of the respective job seeker populations (see the reference to job seekers in the Comparability of Data section of these Explanatory Notes). These populations are added together to derive the total number of job seekers. Tables 4 to 8 provide information on the total job seeker population.

The earnings data in Table 8 is derived using a different methodology from that of the other tables in the publication. Table 8 is based on the combined population of job seekers who are eligible for and entitled to receive Newstart Allowance or Youth Allowance (other) at the end of the second last week in the month. Thus, the data obtained from this table will not be directly comparable with those calculated using monthly averages in other tables.

Payment History

Youth Allowance

From 1 July 1998 Youth Allowance was introduced to provide income support to young people, including students, those looking for work, and those who are sick. Youth Allowees may be undertaking full-time study, full-time job search or a combination of approved activities. Some young people will be exempt from the activity test because of their personal circumstances, eg. illness, homelessness or major personal crisis. The Youth Allowance replaced:

- AUSTUDY for 16-24 year olds (and certain 15 year olds);
- Newstart Allowance for 16-20 year olds (and certain 15 year olds);
- Youth Training Allowance for 16-17 year olds (and certain 15 year olds);
- Sickness Allowance for 16-20 year olds (and certain 15 year olds); and
- More-than-minimum rate Family Payment for secondary students aged 16-18 not getting AUSTUDY.

Youth Allowance recipients are subject to the parental means test. Under previous arrangements, unemployed people aged 18 to 20 were not subject to the parental means test, unlike 18 to 20 year old students.

Special provisions applied for 18 to 20 year olds who were already on Newstart or Sickness Allowance at the date of announcement of Youth Allowance, and who remained on payment when Youth Allowance commenced on 1 July 1998. This group were able to remain on their existing payment and retain their existing benefits.

Youth Allowance had a significant downward effect on Newstart Allowance numbers from July 1998 and total job seeker numbers due to the parental means test.

Newstart Allowance

From 1 July 1998, Newstart Allowance for 16-20 year olds (and certain 15 year olds) was replaced by Youth Allowance. Young people aged 18 to 20 years old who were on Newstart or Sickness Allowance at the date of announcement of Youth Allowance and when Youth Allowance commenced on 1 July 1998, were able to remain on Newstart Allowance.

From 20 September 1996, Job Search Allowance and Newstart Allowance were combined into one payment - Newstart Allowance - which was payable to eligible recipients aged 18 years and over and to some people who were in receipt of Job Search Allowance and aged under 18 at 31 December 1994 (see Job Search Allowance).

Prior to 20 September 1996, Newstart Allowance was payable to eligible persons over 18 years who had been registered as unemployed with the Commonwealth Employment Service (CES) for 12 months or more.

<i>Job Search Allowance</i>	<p>From 20 September 1996, the payment was combined with Newstart Allowance to form one payment called Newstart Allowance. All Job Search Allowance recipients were transferred to Newstart Allowance.</p> <p>Prior to 20 September 1996, Job Search Allowance was payable to eligible persons who had been registered as unemployed with the CES for up to 12 months. It was also payable to eligible persons who were in receipt of Job Search Allowance and under 18 years of age at 31 December 1994. Persons aged 15 to 18 years who were not receiving Job Search Allowance prior to 1 January 1995 commenced on Youth Training Allowance.</p>
<i>Sickness Allowance</i>	<p>From 17 March 1996, persons in receipt of Newstart Allowance or Youth Training Allowance who became temporarily incapacitated no longer transferred to Sickness Allowance after 13 weeks. This change had the effect of increasing total Newstart Allowance/Youth Training Allowance figures but did not affect job seeker figures as those recipients who were incapacitated were excluded from the Newstart and Youth Training job seeker populations.</p> <p>Under current arrangements, these recipients remain on their existing payments but are exempt from the activity test for the duration of their medical certificates. People who become unemployed because of illness, and those who suffer a potential loss of income due to sickness, are paid Newstart Allowance because they are unemployed.</p> <p>Sickness Allowance for 16 to 20 year olds (and certain 15 year olds) was replaced by Youth Allowance, which was introduced on 1 July 1998 (see Youth Allowance).</p>
<i>Partner Allowance</i>	<p>From 20 September 2003, Partner Allowance was closed to new claimants. People on Partner Allowance before this date can remain on the allowance while they remain 'current', that is retain eligibility and entitlement for the allowance.</p> <p>From 1 July 1995 Partner Allowance has only been granted to persons who are dependent partners of pensioners and allowees and who were born before 1 July 1955, have no dependent children and have little or no recent workforce experience. Other dependent partners have to qualify for an income support payment in their own right, such as Newstart Allowance.</p> <p>Partner Allowance was introduced in September 1994, and was paid to partners of persons receiving Job Search Allowance, Newstart Allowance, Sickness Allowance or Special Benefit if certain eligibility criteria were satisfied.</p>
<i>Youth Training Allowance</i>	<p>Youth Training Allowance was replaced by Youth Allowance on 1 July 1998 (see Youth Allowance).</p> <p>From 1 January 1995, eligible persons aged under 18 years who were new entrants to the job search pool were paid Youth Training Allowance. (People who were in receipt of Job Search</p>

Allowance and aged under 18 years at 31 December 1994 continued to be paid Job Search Allowance. From 20 September 1996, those young persons still being paid Job Search Allowance were transferred to Newstart Allowance.)

Widow Allowance Widow Allowance, introduced on 1 January 1995, is payable to females aged 50 years or over who have become widowed, divorced or separated since turning 40 years (50 prior to 20 March 1997), if they meet a number of other criteria relating to current marital status and recent work experience. This has had a slight downwards effect on Newstart Allowance numbers from January 1995.

Mature Age Allowance From 20 September 2003, Mature Age Allowance was closed to new claimants. People on Mature Age Allowance before this date can remain on the allowance while they remain 'current', that is retain eligibility and entitlement for the allowance.

From 1 July 1996, the qualification conditions for Mature Age Allowance changed for new claimants. The requirement for 12 months prior receipt of income support was reduced to 9 months for people transferring from Newstart Allowance and removed entirely for people transferring from non-activity tested payments. The requirement to have been registered as unemployed for 9 months was replaced with a requirement to have no recent workforce experience. Reporting of these new claimants commenced from September 1996.

Mature Age Allowance was introduced on 24 March 1994, and was paid to long-term unemployed persons aged 60 years and over (but below Age Pension age) who had been receiving income support for 9 months or more and who were eligible for Newstart Allowance. The introduction of Mature Age Allowance had a downwards effect on Newstart Allowance numbers from April 1994 until September 2003.

Comparability of Data

There have been significant changes to the data presented in this publication due to a number of events. The main changes are:

- the method of counting recipients;
- the inclusion of some CDEP recipients in the total recipient numbers;
- the introduction of Youth Allowance in July 1998;
- the way 'job seeker' is defined; and
- the way duration is calculated.

People using this data to construct time series should note the following comments.

Definition of Recipient From July 2002, the Department of Family and Community Services (FaCS) introduced a new method to more accurately measure the number of people receiving labour market and related payments. For those receiving labour market and related payments, their eligibility and entitlement status is administered by a payment system called Newstart Common Platform System. Within this system recipients who are both eligible and entitled to receive a payment have a determination status of 'current'.

The new method therefore counts these 'current' recipients.

The old method of counting recipients was specified to include all paid recipients - those who received a payment within a given fortnight. As compiled, however, this count excluded, from mid 1998, recipients who received a 'one-off' payment. These can occur, for instance, when a normal payment is interrupted (eg. payment is cancelled and then restored within that pay period) and a portion of the normal payment is paid.

The time series in Tables 1 and 4 reflect the revised method, as does the remainder of the publication. Revised historical data for these time series from May 1998 to June 2002 can be found in the July 2002 publication.

From July 2003 FaCS introduced a more sustainable methodology for this revised recipient count. Due to limitations in available data sources in 2002, the revised recipient count had to be derived through a complicated process. This more sustainable methodology resulted in slight differences from the recipient numbers used in previous editions.

*Community Development
Employment Projects
(CDEP)* From 20 March 2000, eligible participants in CDEP started receiving CDEP participant supplement and other add-ons, such as rent assistance, as part of income support payments. This added a number of new recipients to those eligible for payments reported in this publication.

*Introduction of
Youth Allowance* The sum of the number of Newstart Allowees and Youth Training Allowees prior to July 1998 is broadly comparable with the sum of Newstart Allowees and Youth Allowees (other) after July 1998. There are two main problems in comparing these two series. The first is the exclusion of some 18 to 20 year old unemployed people due to the application of the Youth Allowance parental means test (see the Youth Allowance section under Payment History). The second is the inclusion of Sickness Allowees in the Youth Allowance (other) population.

There is greater comparability between total Newstart Allowance and Youth Training Allowance job seekers prior to July 1998 and total Newstart Allowance and Youth Allowance (other) job seekers after July 1998. This is because the Sickness Allowance group is excluded from the job seeker total. The problem, however, of the exclusion of some recipients through the application of the Youth Allowance parental means test still remains.

Job seekers Prior to July 1998, the job seeker category was defined by excluding all Newstart Allowees who did not receive a payment, recipients who were incapacitated, and those receiving a payment who were undertaking training. Some people who were not required to engage in job search were classified as job seekers, including people undertaking full-time voluntary work, people on jury duty and pregnant women around the time of the birth of their child.

From July 1998, the definition of job seekers has been placed on a sounder conceptual basis. It is now derived for Newstart Allowance and Youth Allowance (other) recipients by excluding all people who did not receive a payment due to their own and/or their partner's income, or where applicable, parental income, and all those known not to be required to search for work. People receiving Intensive Support Customised Assistance under Job Network arrangements are classified as job seekers although they may not always be undertaking job search. These people negotiate their activity agreement with their Job Network member.

The total number of job seekers (comparable to pre-July 1998 estimates) is calculated by adding together the number of job seekers in receipt of Newstart Allowance and Youth Allowance (other) - see the Explanatory Notes on Youth Allowance.

Duration

Following system changes in May 1998, duration has been defined according to the time a recipient spends on income support - short-term recipients are those who have been on income support for up to 12 months and long-term recipients are those who have been on income support for 12 months or more.

Prior to 1998, duration was defined according to the time a recipient was registered as unemployed - short-term recipients were people who were registered as unemployed for up to 12 months and long-term recipients were people who were registered for 12 months or more.

Closure of Mature Age and Partner Allowances

From 20 September 2003, Mature Age Allowance and Partner Allowance were closed to new claimants. People on these allowances before this date can remain on that allowance while they remain 'current', that is retain eligibility and entitlement for the allowance. The majority of people who would previously have claimed these payments will now claim Newstart Allowance.

Symbols

n.a. not available
 .. not applicable

GLOSSARY

Activity test status	The activity that a Newstart Allowance or Youth Allowance (other) recipient has agreed to undertake in order to meet the activity test. To satisfy the activity test recipients must be actively seeking and willing to take up work or undertaking activities to improve their employment prospects.
Age	Age in years at time of data collection.
Area Support Office	A Centrelink office that supports a set of Customer Service Centres for a specified area. These are generally not confined to State boundaries.
Community Development Employment Projects (CDEP)	<p>The CDEP programme is administered by the Department of Families, Housing, Community Services and Indigenous Affairs (FaHCSIA) from December 2007 and was previously administered by the Department of Employment and Workplace Relations (DEWR). CDEP provides unemployed Indigenous people with activities designed to meet community needs and which develop participants' skills and improve their employability in order to assist them to move to employment outside the CDEP organisation. These activities can also lead to the development of business enterprises.</p> <p>The CDEP Participant Supplement (CPS) is payable to eligible CDEP participants. It can be paid fortnightly or as a 12 weekly payment.</p>
Customer Service Centre	A Customer Service Centre set within a particular region that provides FaHCSIA, DEEWR and other payments and related information and services to recipients. Customer Service Centres are managed by Area Support Offices.
Did not receive a payment	Persons who did not receive a payment due to their own income and/or that of their partner, or parents, where applicable. This group is often referred to as 'zero paid'.
Eligibility and payment status	Refer to the Methodology entry in the Explanatory Notes.
Fortnightly earnings	Amount of income earned, derived, or received by a person for the person's own use or benefit in the previous fortnight.
Incapacitated	A person on Newstart Allowance or Youth Allowance (other) who has an activity test status indicating they are temporarily ill or incapacitated. Refer to the entry for Sickness Allowance in the Explanatory Notes.
Job seekers	A person on Newstart Allowance or Youth Allowance (other) who would usually be engaged in jobsearch. See Explanatory Notes for definition and history.

Job Search Allowance (JSA)	Up to 20 September 1996, Job Search Allowance was payable to CES eligible persons who had been registered as unemployed with the CES for up to 12 months. From 20 September 1996, the payment was combined with Newstart Allowance to form one payment called Newstart Allowance. See Explanatory Notes for history.
Long-term recipients	Persons on Newstart Allowance or Youth Allowance who have been receiving income support for 12 months or more. Duration of long-term recipients can be reset to zero if they exited from payments for more than 13 weeks.
Mature Age Allowance (MAA)	From 20 September 2003, Mature Age Allowance was closed to new claimants. People on Mature Age Allowance before this date can remain on the allowance while they remain 'current', that is retain eligibility and entitlement for the allowance. Mature Age Allowance, a non-activity-tested payment, is payable to unemployed people aged 60 years and over (but below Age Pension age) with little or no recent workforce experience who meet certain requirements for previous receipt of income support. See Explanatory Notes for history.
Newstart Allowance (NSA)	Newstart Allowance is payable to eligible unemployed persons aged 21 years and over (but below Age Pension age) who satisfy the activity test. See Explanatory Notes for history.
Newstart Common Platform System (NCP)	The Newstart Common Platform System (NCP) was introduced in May 1998. The NCP administers all labour market and related payments. This includes primary payments such as Newstart Allowance, Youth Allowance, Mature Age Allowance, Widow Allowance and Partner Allowance. Other payments on the NCP include Special Benefit, Sickness Allowance, Exceptional Circumstances Relief, Farm Help and Austudy.
Partner Allowance (PA)	<p>From 20 September 2003, Partner Allowance was closed to new claimants. People on Partner Allowance before this date can remain on the allowance while they remain 'current', that is retain eligibility and entitlement for the allowance.</p> <p>Partner Allowance, a non-activity-tested payment, is payable to persons who are dependent partners of pensioners and allowees and who were born before 1 July 1955, have no dependent children and have little or no recent workforce experience. See Explanatory Notes for history.</p>
Short-term recipients	Persons on Newstart Allowance or Youth Allowance who have been receiving income support for less than 12 months. Duration of short-term recipients can be reset to zero if they exited from payments for more than 6 weeks.
States	States and Territories of Australia derived from the postcode of the recipient's residence as held on the Centrelink payment system.

Widow Allowance (WA)	<p>From 1 July 2005 Widow Allowance was closed to new claimants, unless the woman was born on or before 1 July 1955.</p> <p>Widow Allowance, a non-activity tested payment, is payable to females aged 50 years or over who have become widowed, divorced or separated since turning 40 years if they have little or no recent work experience and meet a number of other criteria relating to current marital status. See Explanatory Notes for history.</p>
Youth Training Allowance (YTA)	<p>From 1 January 1995 eligible persons aged under 18 years who were registered as unemployed with the CES were paid Youth Training Allowance. From 1 July 1998, Youth Training Allowance was replaced by Youth Allowance. See Explanatory Notes for history.</p>
Youth Allowance (YA)	<p>Youth Allowance is payable to eligible full-time students aged 16 to 25 years, and to eligible unemployed persons aged 16 to 20 years who satisfy the activity test. Note, there are certain exceptions for some 15 and 25 year olds. See Explanatory Notes for history.</p> <p>Youth Allowees may be undertaking full-time study, full-time job search or a combination of approved activities. Some young people will be exempt from the activity test because of their personal circumstances, eg. illness, homelessness or major personal crisis. See the Explanatory Notes for more information.</p>
Youth Allowance (other)	<p>Youth Allowance recipients who are not full-time students or full-time Australian Apprentices.</p>
Zero paid	<p>See 'Did not receive a payment'.</p>

APPENDIX

COMPARISONS BETWEEN DEEWR UNEMPLOYMENT LABOUR MARKET PAYMENT NUMBERS AND ABS LABOUR FORCE UNEMPLOYMENT STATISTICS

Official statistics	Official unemployment statistics are released by the Australian Bureau of Statistics (ABS). The ABS uses definitions recommended by the International Labour Office which have been accepted internationally as the most appropriate for the compilation of official statistics of unemployment.
ABS definition	The ABS unemployment statistics measure the number of persons who, for a particular reference period, did not undertake any paid work, were actively looking for work and were available to start work.
DEEWR Unemployment Labour Market Payment Statistics	The labour market payment statistics give the number of persons who are both eligible and entitled to receive Newstart Allowance or Youth Allowance (other). The criteria for receipt of these payments do not match those the ABS uses to determine whether a person is classed as unemployed or employed for statistical purposes.
Differences	Care should be taken when comparing the ABS labour force and DEEWR labour market payment data. There are a number of reasons why the two series cannot be directly compared.
<i>Duration</i>	<p>Both DEEWR and the ABS classify long-term duration as over 12 months, but use substantially different definitions of duration:</p> <p>DEEWR measures duration of income support. This includes not just time on unemployment benefits but time on any income support payment.</p> <p>The ABS measures length of time unemployed using their unemployment definition.</p> <p>DEEWR unemployed recipients can have breaks without payment for up to 25 weeks but still be classified as long-term income support recipients:</p> <ul style="list-style-type: none">• Recipients who do not receive a payment due to their earnings can have up to 12 weeks without a payment before they are automatically cancelled. This reduces disincentives to accept short-term work.• Long-term recipients can have another 13 weeks off payment after payment is cancelled and still keep their long-term status if they return to income support. This means they keep access to assistance such as the Employment Entry Payment and the higher payment rate for recipients over 60.

For the ABS statistics, any hours of work for a period as short as two weeks count as a break from unemployment and so are enough to reset a person's unemployment duration.

The difference between these two concepts, together with the fact that DEEWR recipients are able to have ongoing part-time work (see 'employment' below) mean that many unemployed recipients remain classified by DEEWR as long-term recipients when they would be classified as short-term unemployed under the ABS definition.

Seasonal adjustment The ABS produces a seasonally adjusted series. The DEEWR labour market payment numbers data are not seasonally adjusted.

Classification The ABS classifies a person as unemployed if he or she is aged 15 years and over, was not employed during the week before the interview, has actively looked for full-time or part-time work and is available to start work. From February 2004, people who had not actively looked for work because they were waiting to start a job within four weeks are also classified as unemployed.

The Newstart Allowance and Youth Allowance (other) series generally count people who are eligible for and entitled to receive a payment between the ages of 15 years and 64 years in the case of men and 15 to 63 years in the case of women.

Employment Newstart Allowance and Youth Allowance (other) recipients may be employed part-time, but within an income test limit; the ABS classifies a person as "employed" if, among other things, he or she has worked for one hour or more during the survey period.

Timing The timing of collections of the series are different:

- DEEWR reports monthly average numbers of people both eligible for and entitled to receive Newstart Allowance and Youth Allowance (other). These monthly averages are calculated using figures collected for each Friday throughout the reference month.
- ABS numbers are based on a sample survey which interviews occupants of selected dwellings covering around 0.27% of the total Australian population. These persons are generally interviewed during the two weeks beginning the Monday between the 6th and 12th of each month and the information obtained relates to the week before the interview takes place.

Treatment of partners The ABS series includes unemployed persons whose spouse is working, irrespective of income, whereas Newstart Allowance and Youth Allowance (other) recipients are subject to an income and assets test for themselves and their spouse.

Pensioners The ABS series includes persons being paid a pension but looking for work (eg. sole parents in receipt of Parenting Payments looking for work).

<i>Non job seekers</i>	The overall Newstart Allowance and Youth Allowance (other) series includes persons who are not required to undertake jobsearch. These persons are separately identified in Tables 2 and 3, and have then been excluded in subsequent tables. These people may be undertaking training, the development of self-employment opportunities, full-time voluntary work or a combination of voluntary and part-time work which excludes them from jobsearch obligations. They may also be incapacitated or have another temporary exemption from jobsearch.
<i>Waiting periods</i>	The ABS series includes persons who are serving a waiting period before being granted Newstart Allowance or Youth Allowance (other), or whose allowance was deferred.
<i>Survey</i>	The ABS figures are derived from a Labour Force Survey which is a sample survey, whereas the DEEWR statistics are a complete count of those both eligible for and entitled to receive Newstart Allowance and Youth Allowance (other).

FOR MORE INFORMATION

Labour market information

Other statistics on recipients of labour market related payments are available on request.

In addition to Newstart and Youth Allowances, statistics are also available on Partner Allowance, Mature Age Allowance and Widow Allowance.

For publication distribution enquiries email:
REGULAR.REPORTING@centrelink.gov.au

Written correspondence concerning this publication or statistics on labour market related payments should be addressed to:

Director
Income Support Information Section
Working Age Payment Programs Branch
Income Support and Stakeholder Group
Department of Education, Employment and Workplace Relations
PO Box 9879
Canberra Mail Centre ACT 2601

or forwarded via facsimile to (02) 6275 3328.

Other recipient information

Statistics relating to other recipients are also available, including recipient numbers and characteristics for the various FaHCSIA pensions, benefits and family payments.

Other statistical outputs

The following statistical outputs are available on request:

Department of Families, Housing, Community Services and Indigenous Affairs (FaHCSIA)
Income Support Customers: a Statistical Overview
1996, 1997, 1998, 1999, 2000, 2001, 2002, 2003 and 2004.